

- NOTES:
- 9 USE SMOOTH PLUMBERS PUTTY 167459-01-000 TO SEAL STRAINER (0.2 PER STRAINERS)
 - 8 NIPPLE TO BE TRIMMED TO LENGTH ON INSTALL.
 - 7 TRIM TO FIT.
 - 6 VENT PIPE MUST PROJECT 51 MIN AND 64 MAX ABOVE ROOF FOR PROPER FIT AND FUNCTION.
 5. SEAL AROUND SHOWER WITH SILICONE.
 4. SECURE DRAINAGE PIPES TO CABINET USING WIRE TIE 108046-02-000, AND SCREW 000G67-10-12B AT INTERVALS OF NOT MORE THAN 4 FEET APART.
 3. ALL PIPE AND FITTINGS TO BE ASSEMBLED WITH SOLVENT 004020-01-000 (USA), 004020-02-000 (CAN)
 2. SLOPE OF TRAP ARM MUST BE 6 PER 305 mm.
 1. SLOPE OF HORIZONTAL PIPING TO BE MINIMUM OF 3 PER 305 mm.

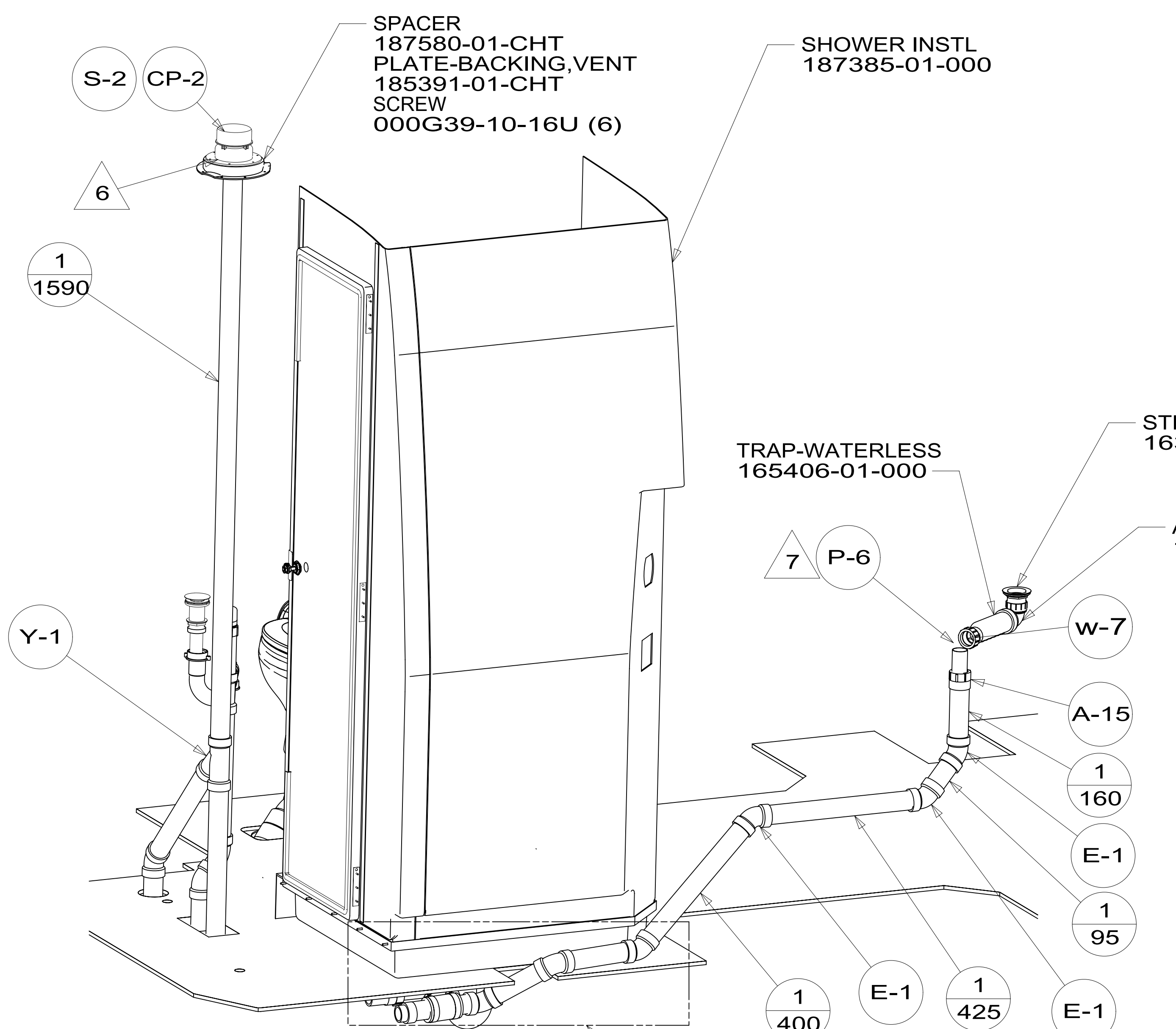
265 CODES/STANDARDS-CSA/CMVSS
 1B1 CODES/STANDARDS USA



| | |
|------------------------------|--|
| DFT-ORIG | ORIG. DATE |
| CHKR | ALL DIMENSIONS ARE IN MILLIMETERS |
| P.E. | |
| M.E. | FIRST USED |
| DSNR | 15 170C |
| UNSPECIFIED TOLERANCES ARE: | |
| WHOLE DIM (X) | : 3 |
| ONE-PLACE (X.X) | : 1.5 |
| TWO-PLACE (X.XX) | : 0.50 |
| ANGLE | : 1° |
| THIRD ANGLE PROJECTION | |
| DO NOT SCALE DRAWING | REFER TO ES0018 FOR FASTENER TIGHTENING GUIDELINES |
| TITLE: DRAINAGE SYSTEM INSTL | |
| SHEET 1 OF 4 | PART NO 187390 REV |

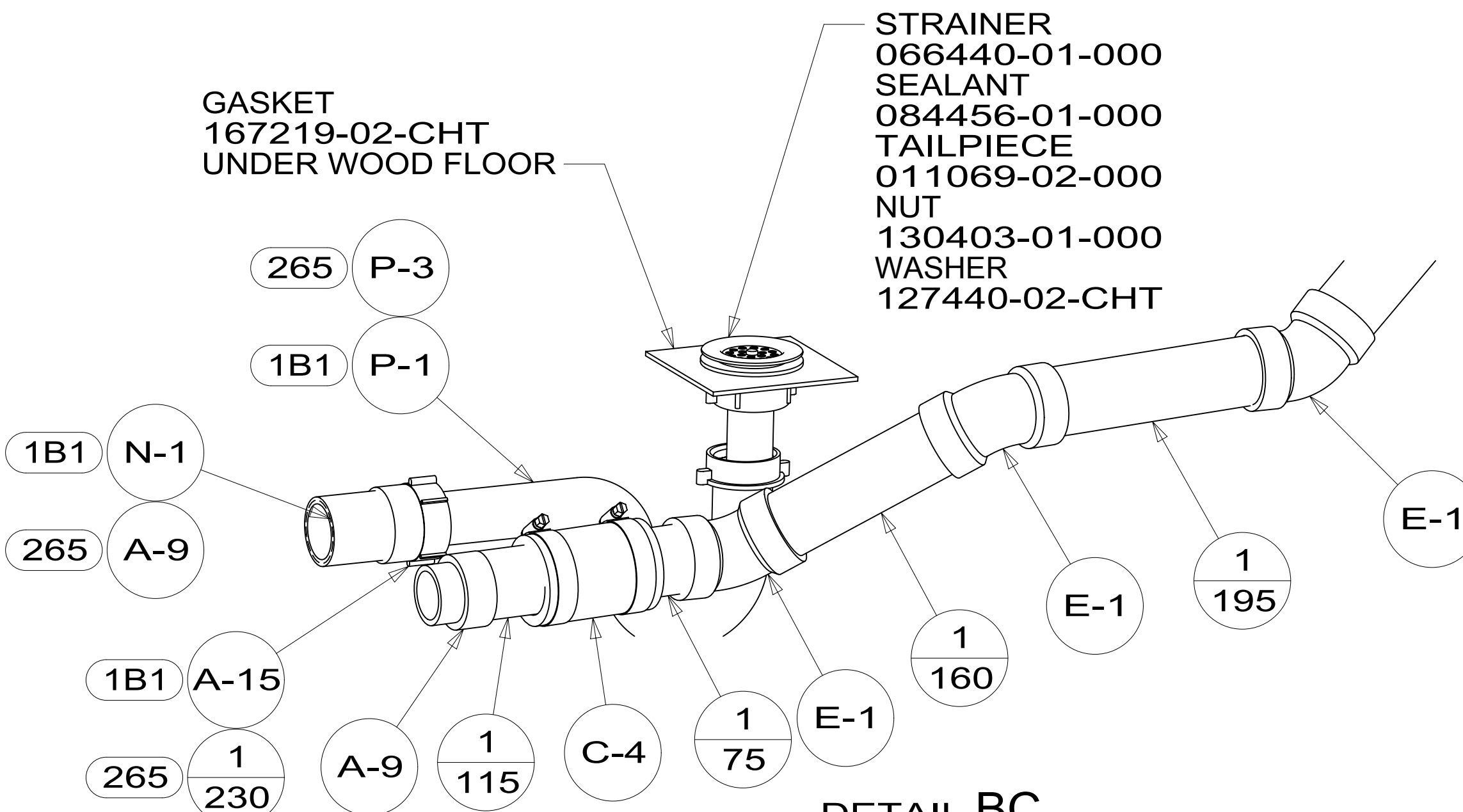
FOR DRAINAGE CALLOUTS SEE DWG NO 116229-01-000

187390

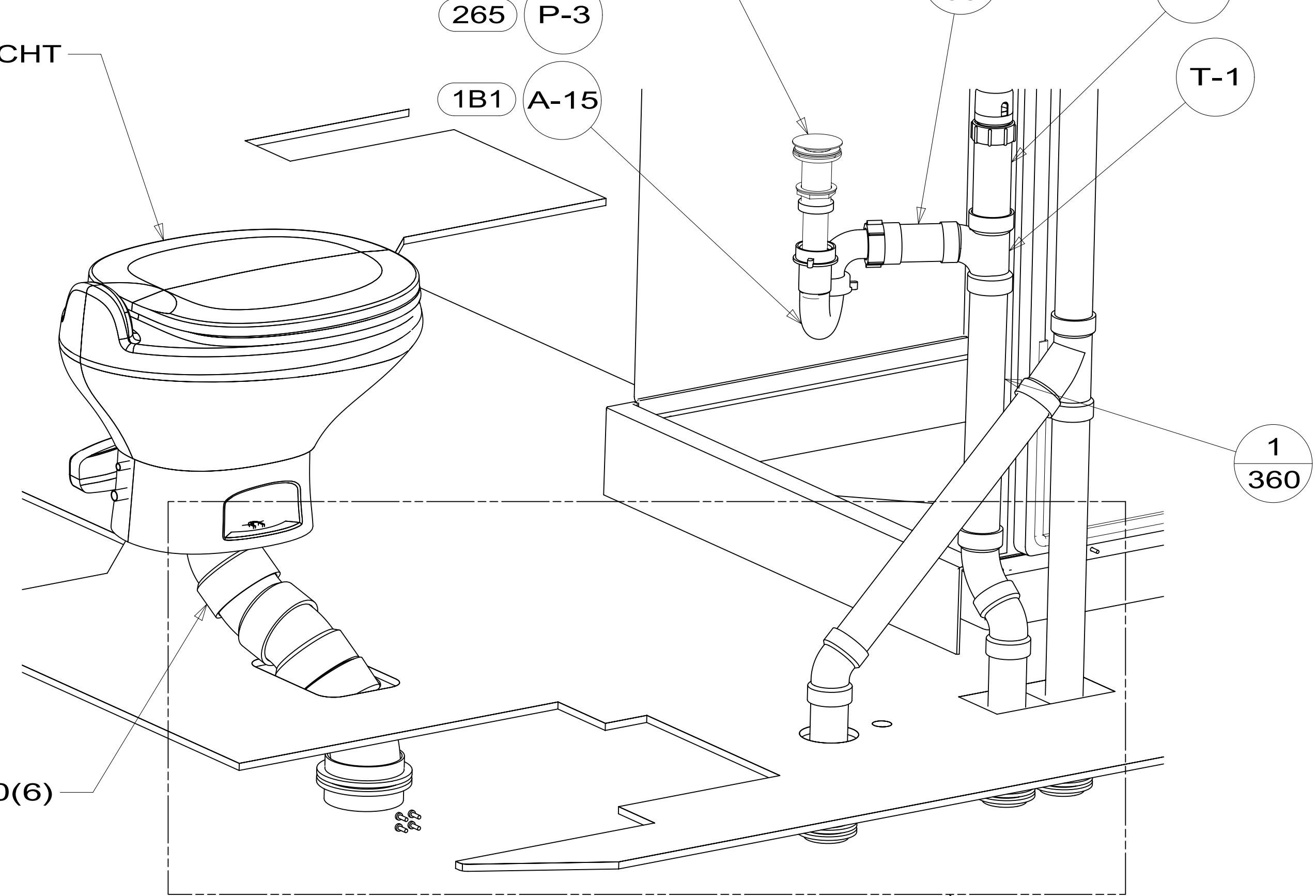


VIEW BA

DETAIL BC

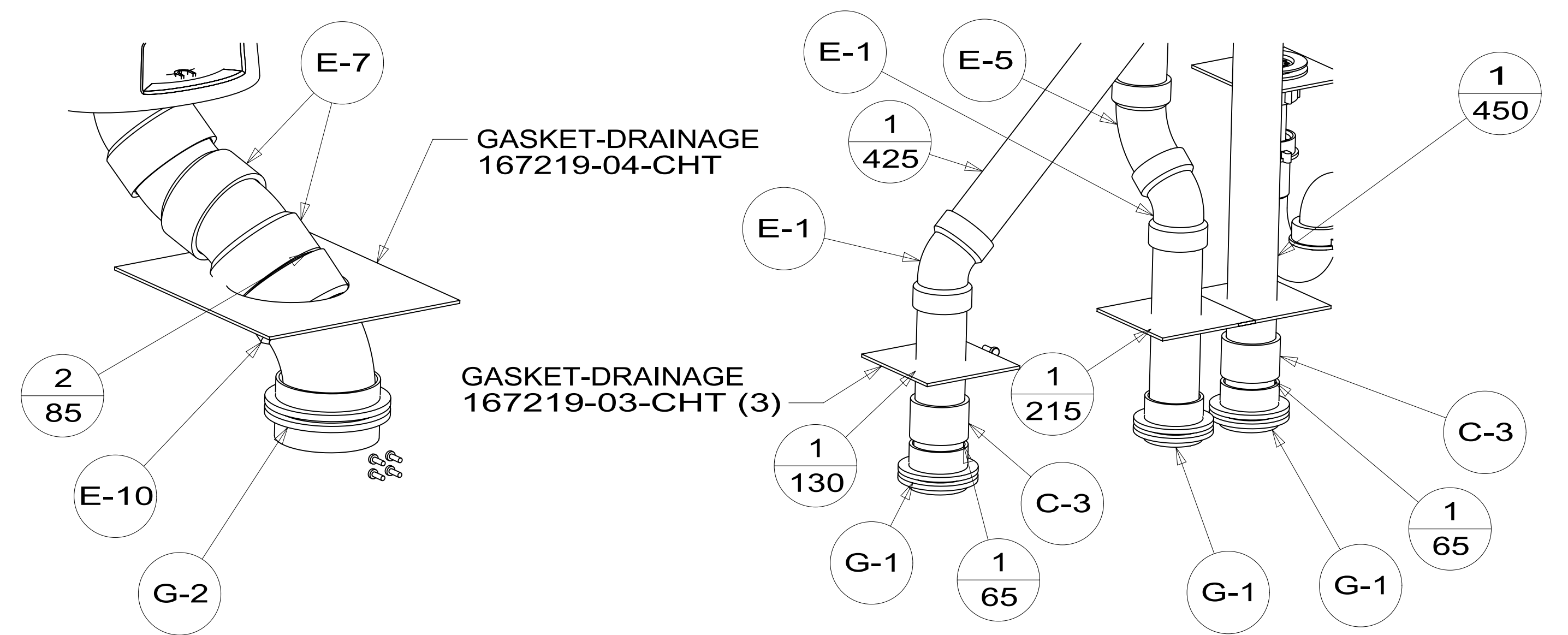


DETAIL BC (SHOWN W/OUT SHOWER & FLOOR)



VIEW BB

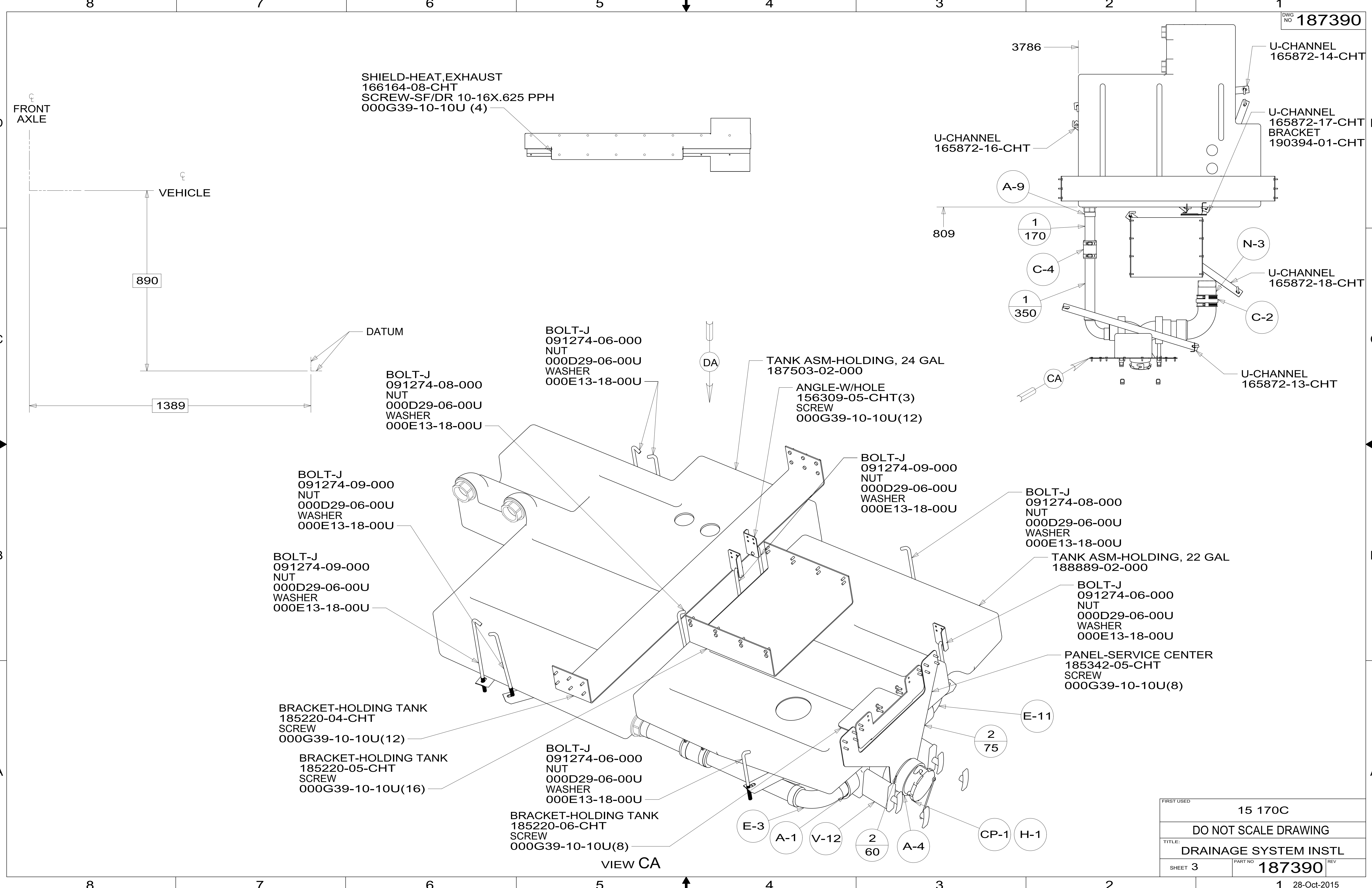
DETAIL BD



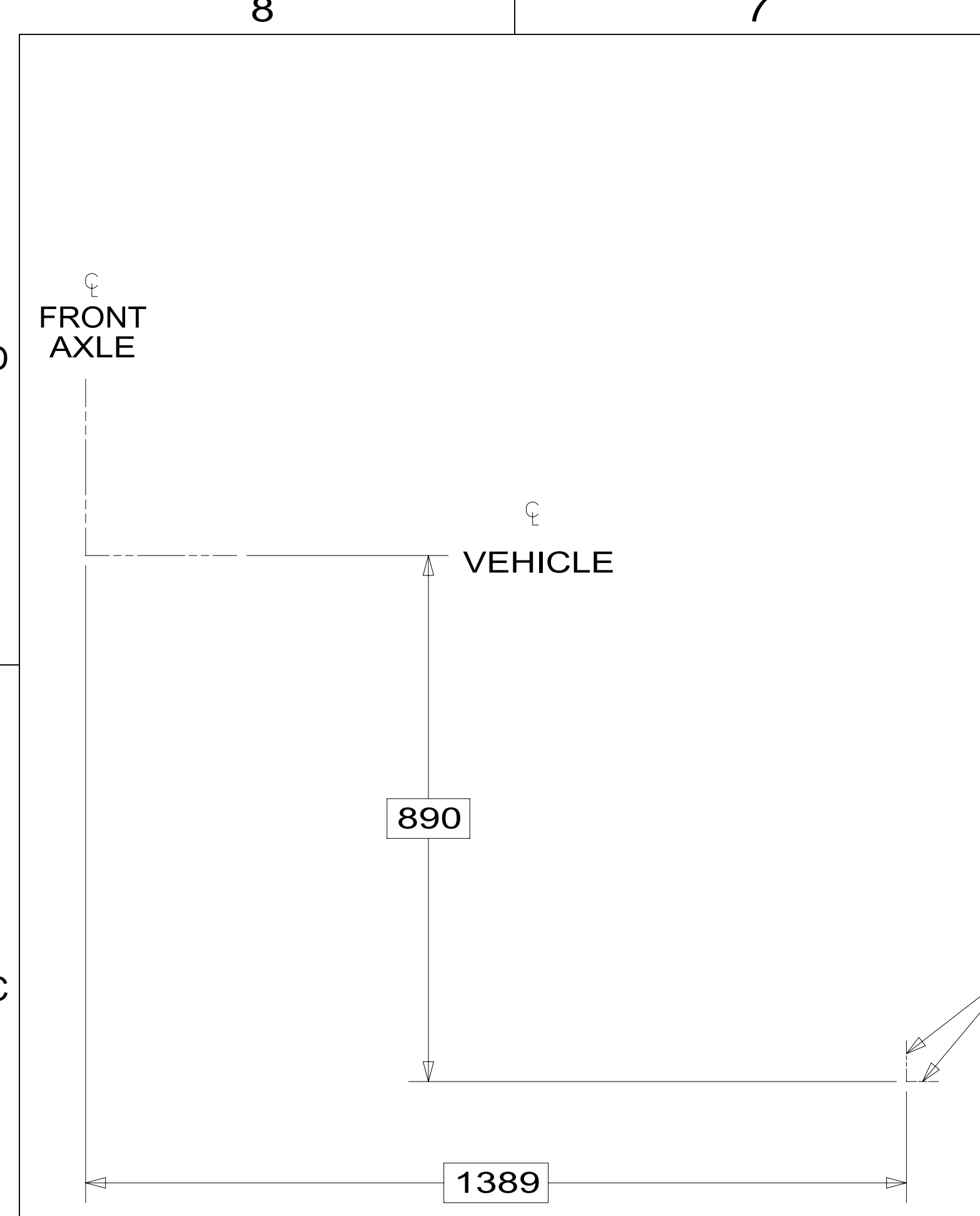
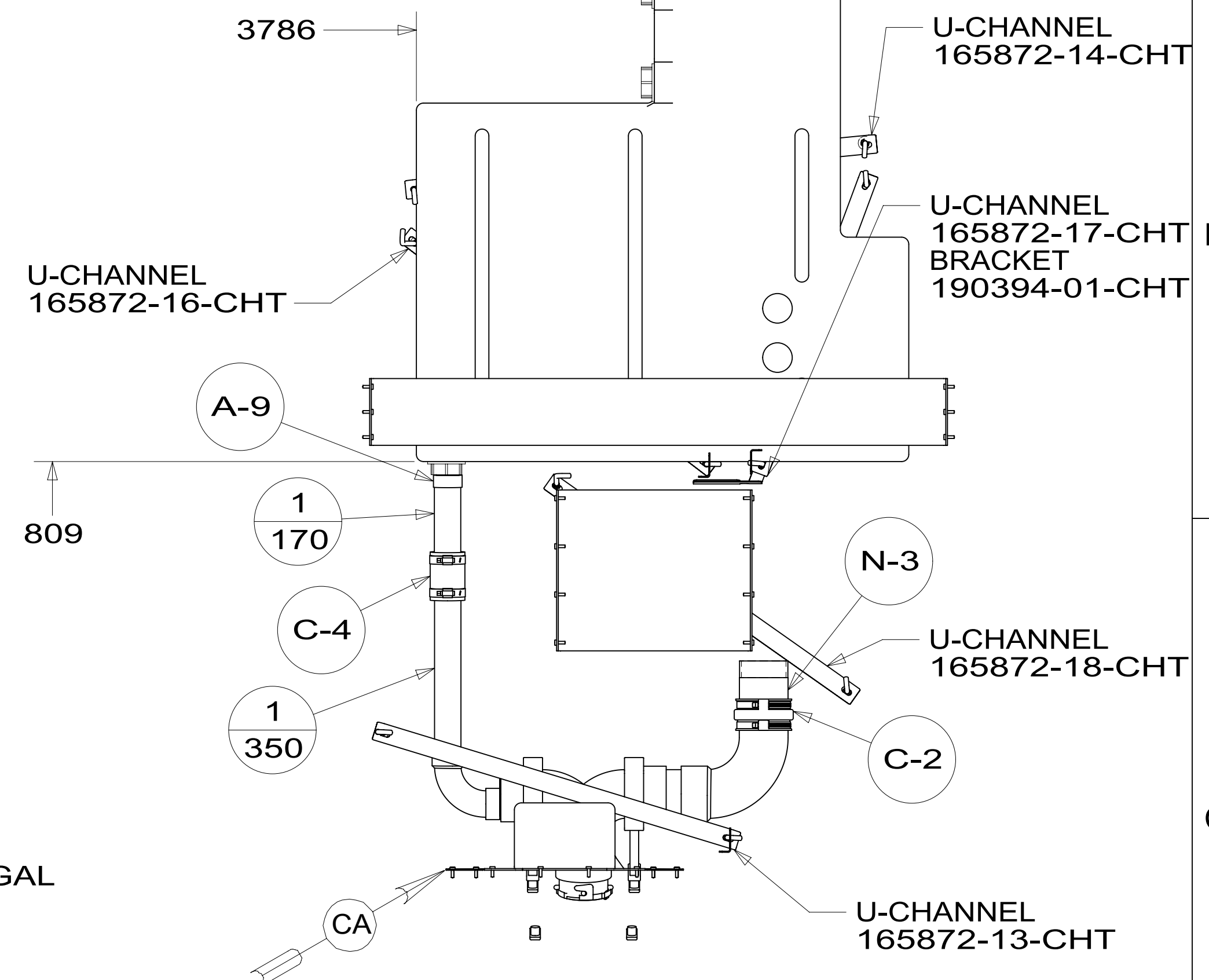
DETAIL BD (SHOWN W/OUT FLOOR)

| | | |
|------------|-----------------------|-------------|
| FIRST USED | 15 170C | |
| TITLE: | DO NOT SCALE DRAWING | |
| TITLE: | DRAINAGE SYSTEM INSTL | |
| SHEET 2 | PART NO | 187390 |
| | REV | 1 |
| | | 28-Oct-2015 |

187390



SHIELD-HEAT, EXHAUST
166164-08-CHT
SCREW-SF/DR 10-16X.625 PPH
000G39-10-10U (4)



BOLT-J
091274-06-000
NUT
000D29-06-00U
WASHER
000E13-18-00U

BOLT-J
091274-08-000
NUT
000D29-06-00U
WASHER
000E13-18-00U

TANK ASM-HOLDING, 24 GAL
187503-02-000

ANGLE-W/HOLE
156309-05-CHT(3)
SCREW
000G39-10-10U(12)

BOLT-J
091274-09-000
NUT
000D29-06-00U
WASHER
000E13-18-00U

BOLT-J
091274-09-000
NUT
000D29-06-00U
WASHER
000E13-18-00U

BOLT-J
091274-08-000
NUT
000D29-06-00U
WASHER
000E13-18-00U

BOLT-J
091274-09-000
NUT
000D29-06-00U
WASHER
000E13-18-00U

TANK ASM-HOLDING, 22 GAL
188889-02-000

BOLT-J
091274-06-000
NUT
000D29-06-00U
WASHER
000E13-18-00U

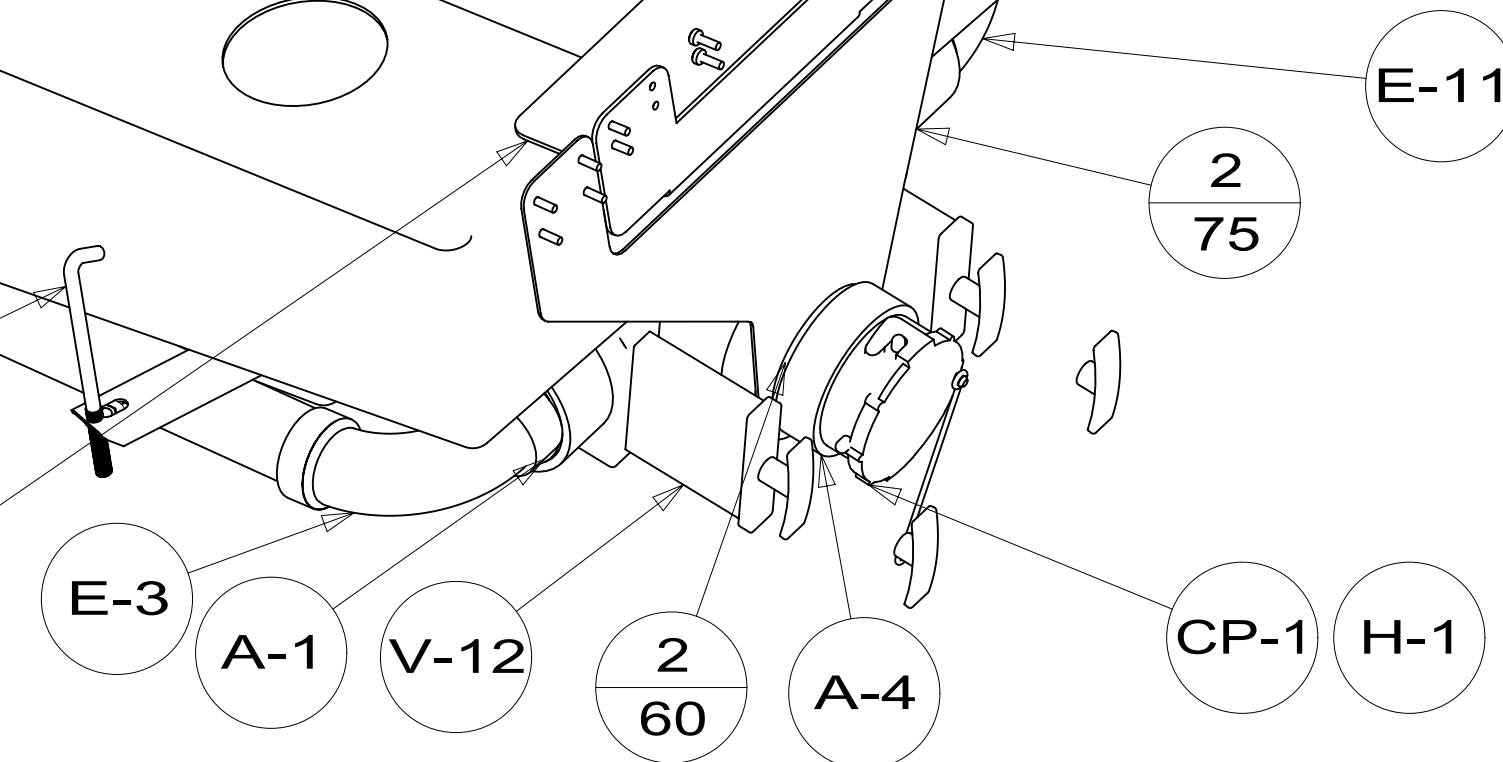
PANEL-SERVICE CENTER
185342-05-CHT
SCREW
000G39-10-10U(8)

BRACKET-HOLDING TANK
185220-04-CHT
SCREW
000G39-10-10U(12)

BRACKET-HOLDING TANK
185220-05-CHT
SCREW
000G39-10-10U(16)

BOLT-J
091274-06-000
NUT
000D29-06-00U
WASHER
000E13-18-00U

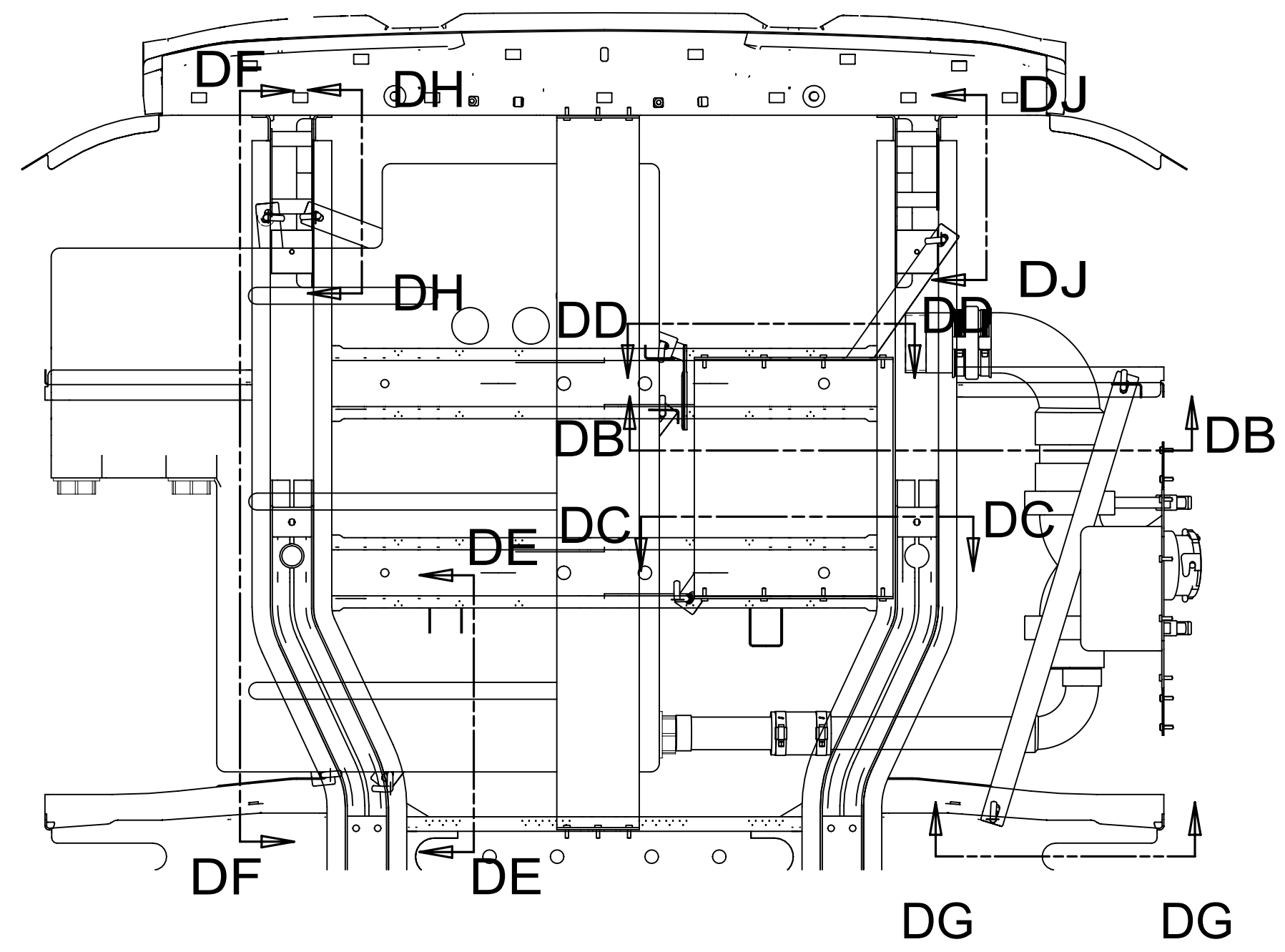
BRACKET-HOLDING TANK
185220-06-CHT
SCREW
000G39-10-10U(8)



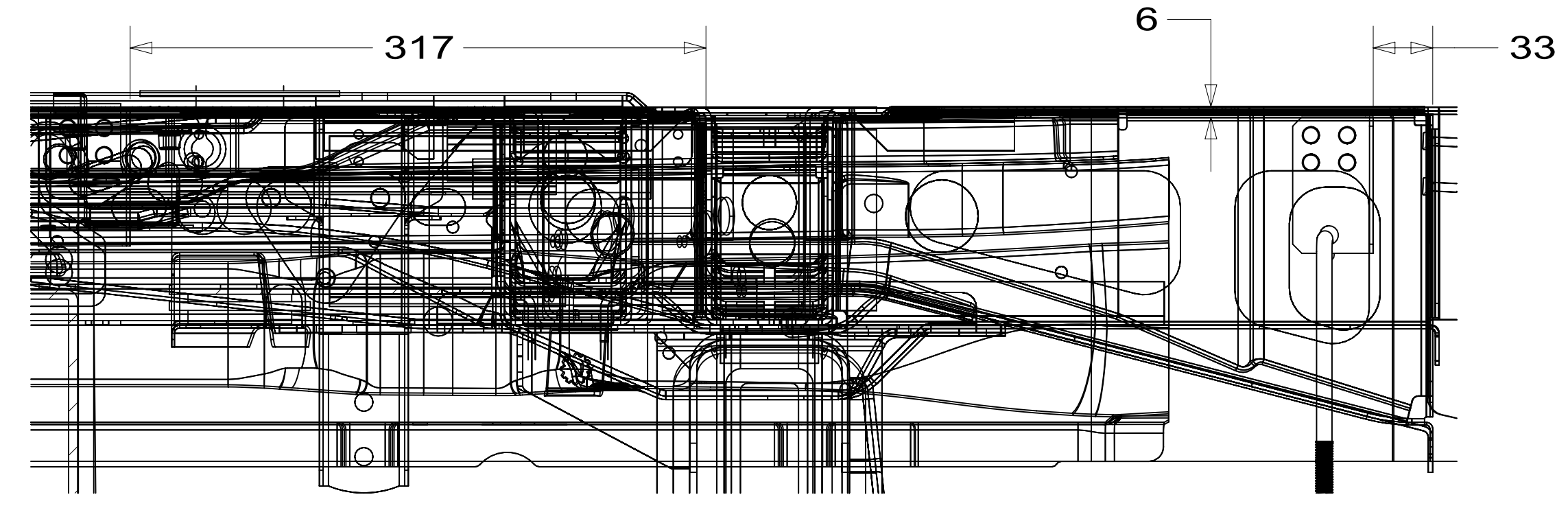
VIEW CA

| | | |
|------------|-----------------------|---------------|
| FIRST USED | 15 170C | |
| TITLE: | DO NOT SCALE DRAWING | |
| TITLE: | DRAINAGE SYSTEM INSTL | |
| SHEET 3 | PART NO 187390 | REV |
| | | 1 28-Oct-2015 |

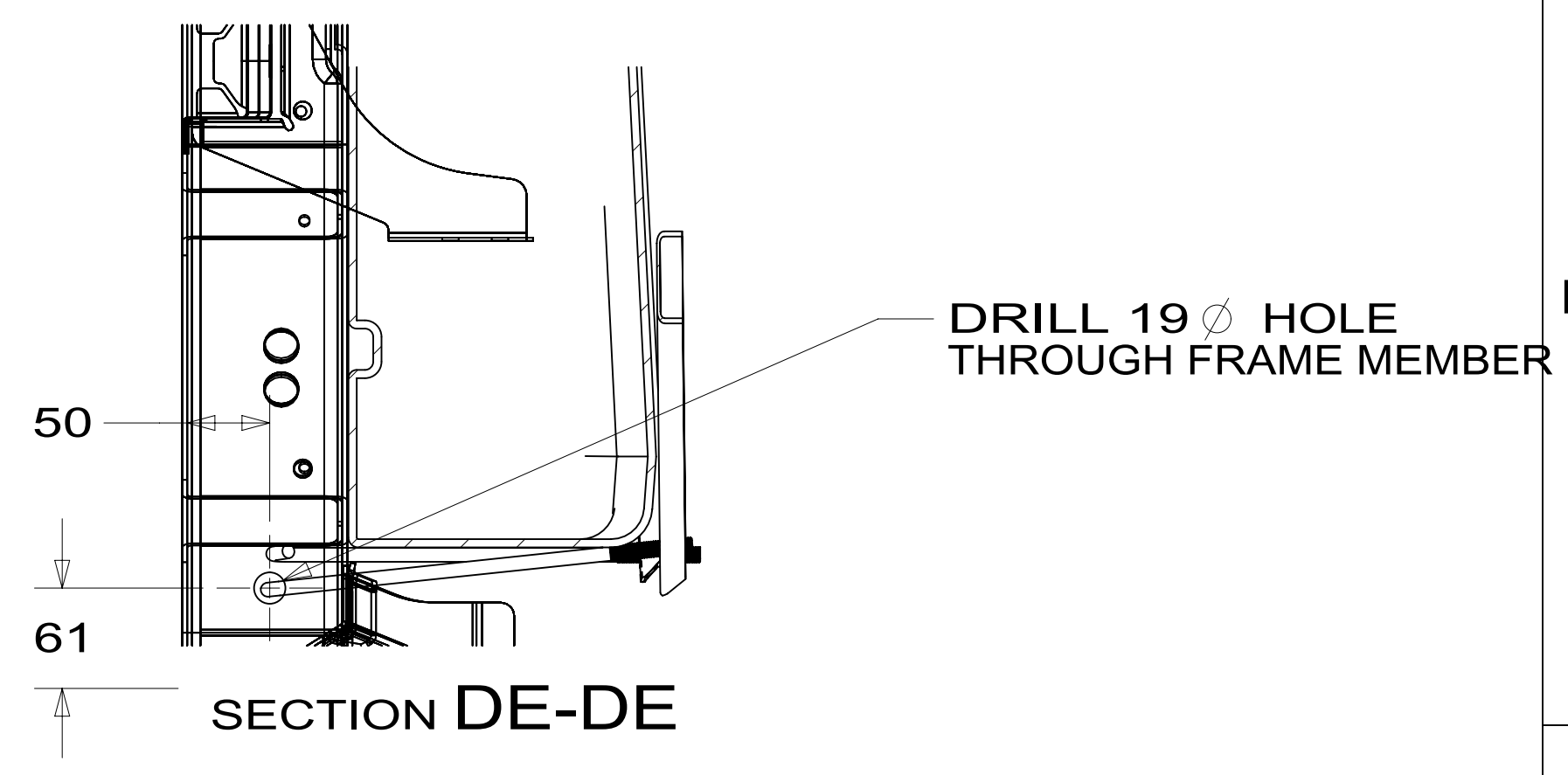
187390



VIEW DA

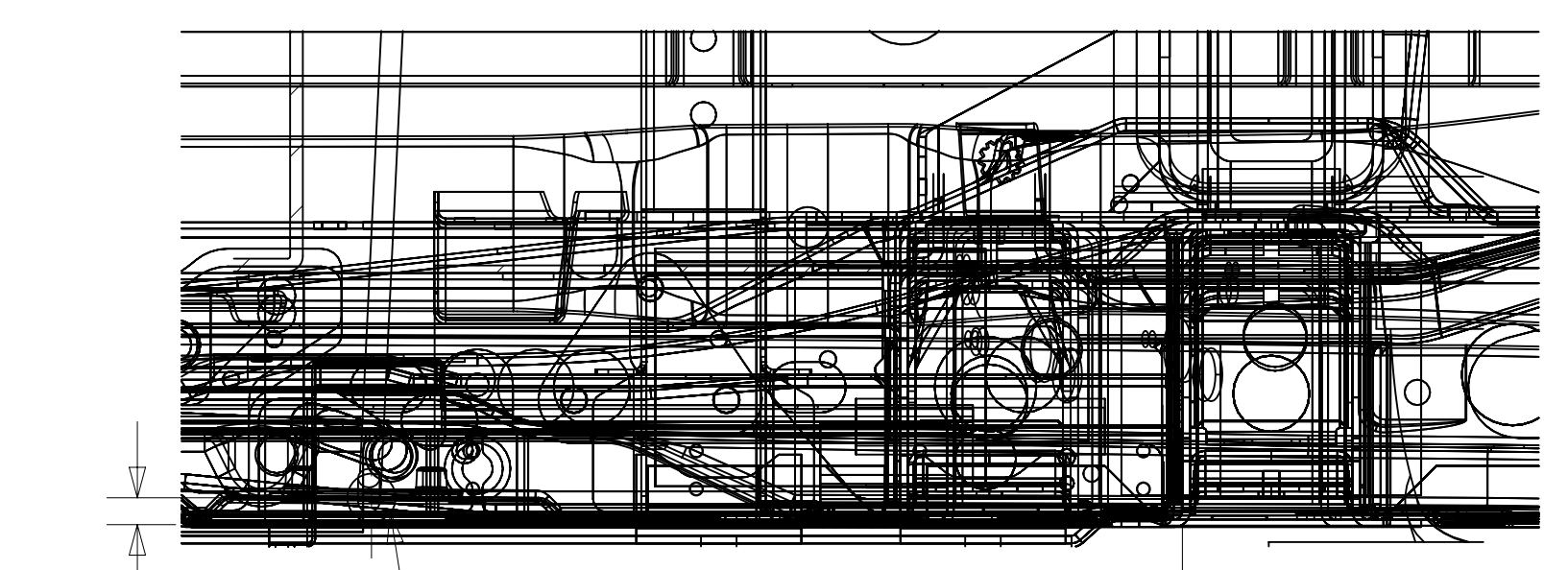


SECTION DB-DB



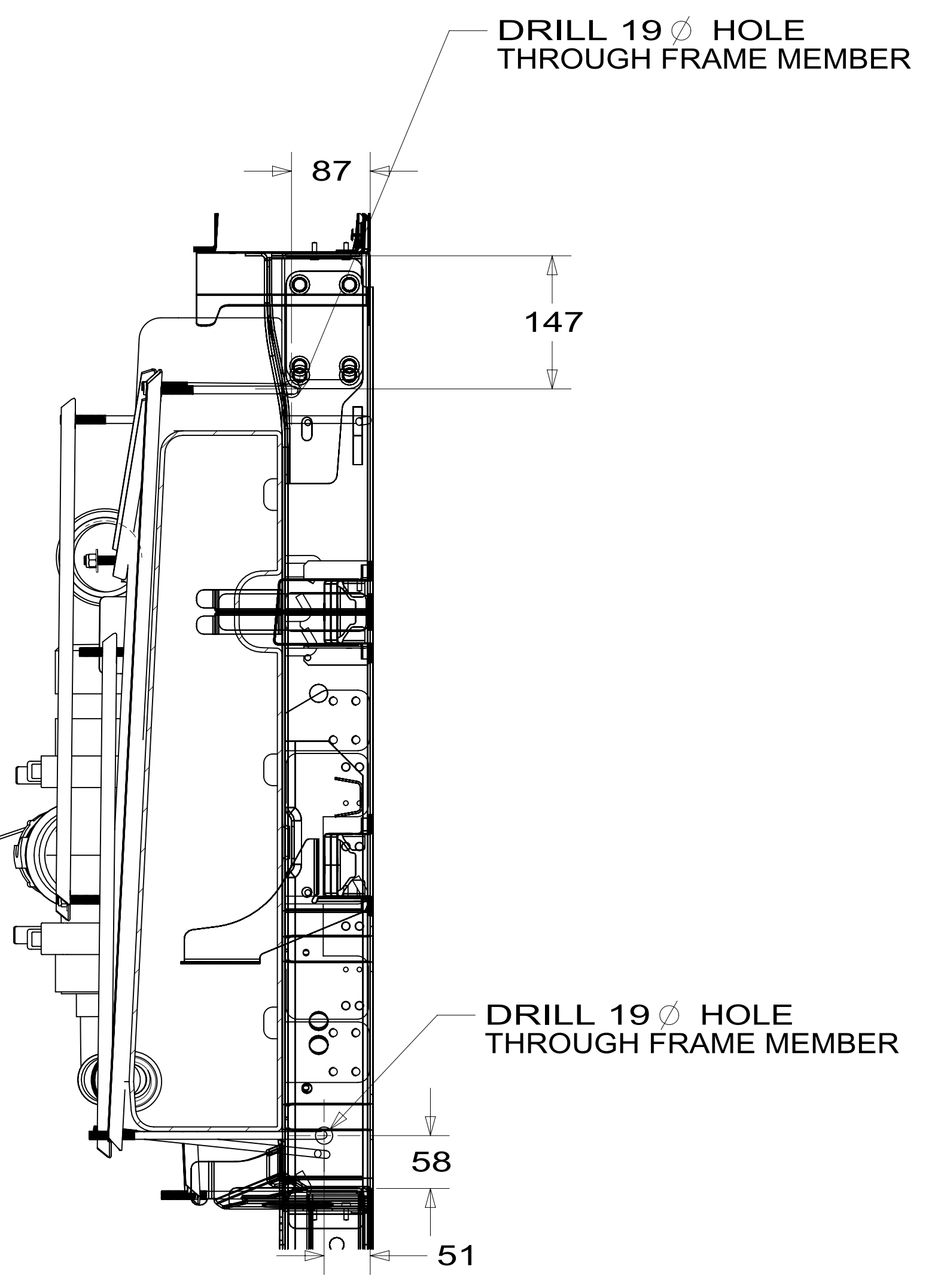
SECTION DE-DE

DRILL 19 Ø HOLE THROUGH FRAME MEMBER



DRILL 19 Ø HOLE THROUGH FRAME MEMBER

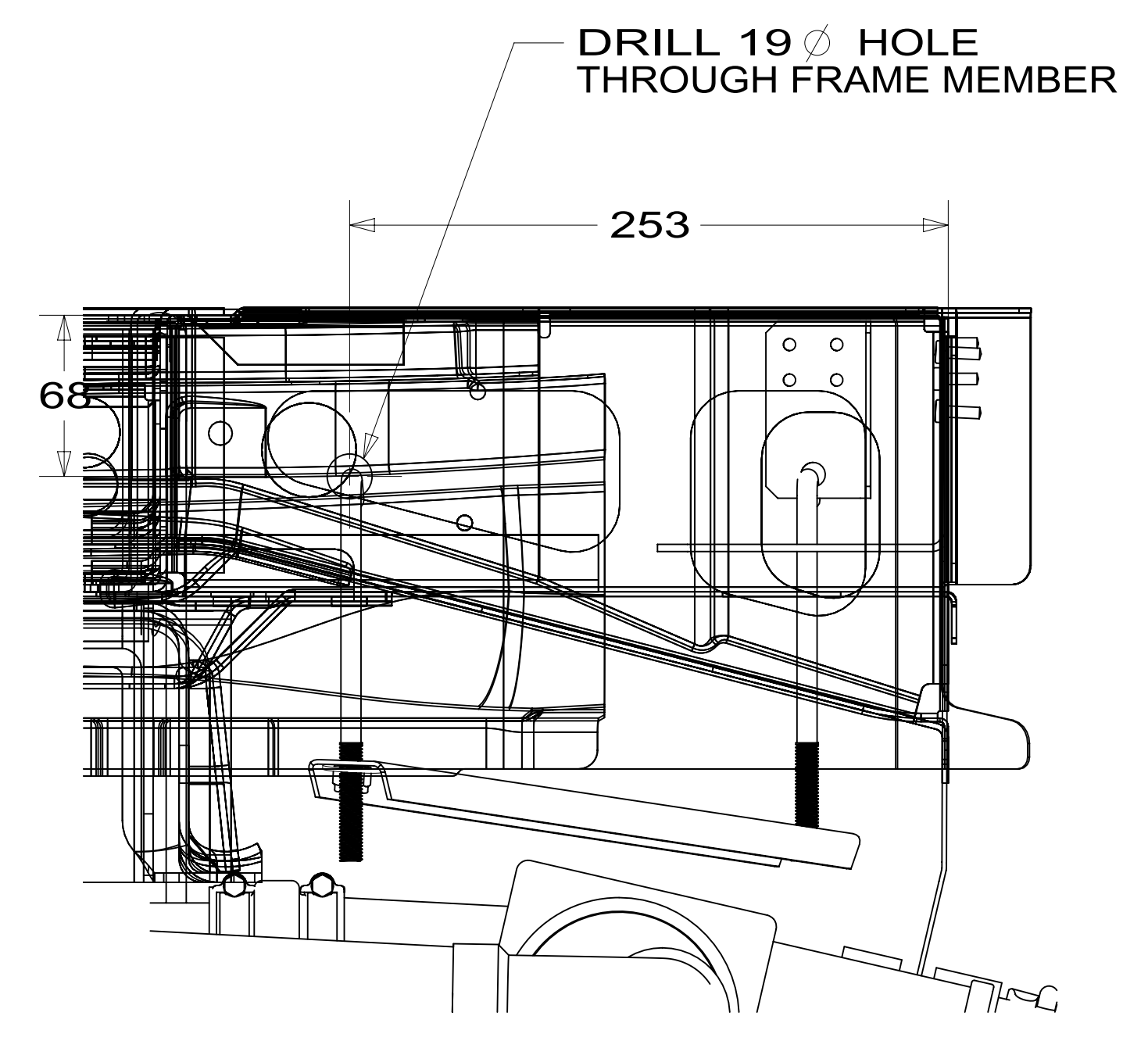
SECTION DC-DC



DRILL 19 Ø HOLE THROUGH FRAME MEMBER

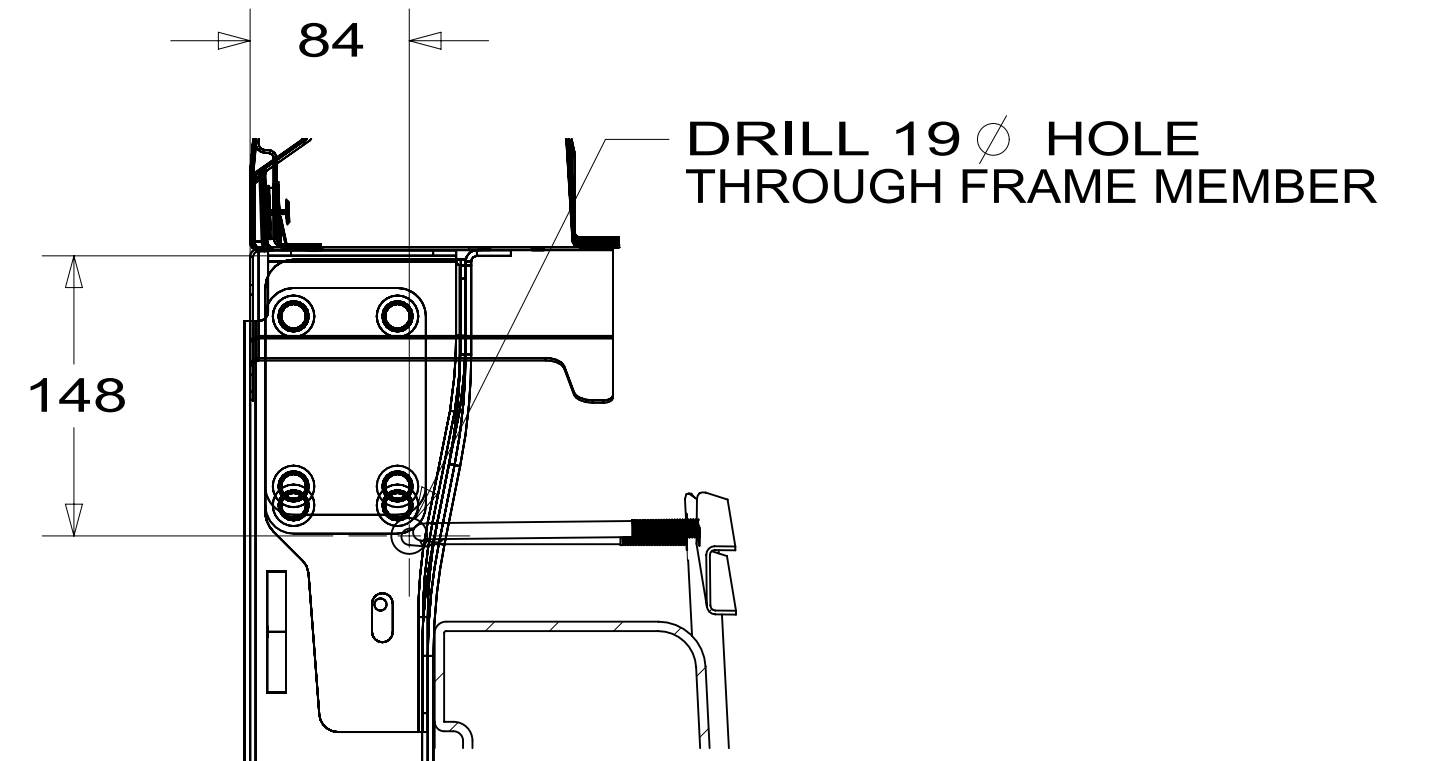
DRILL 19 Ø HOLE THROUGH FRAME MEMBER

SECTION DF-DF



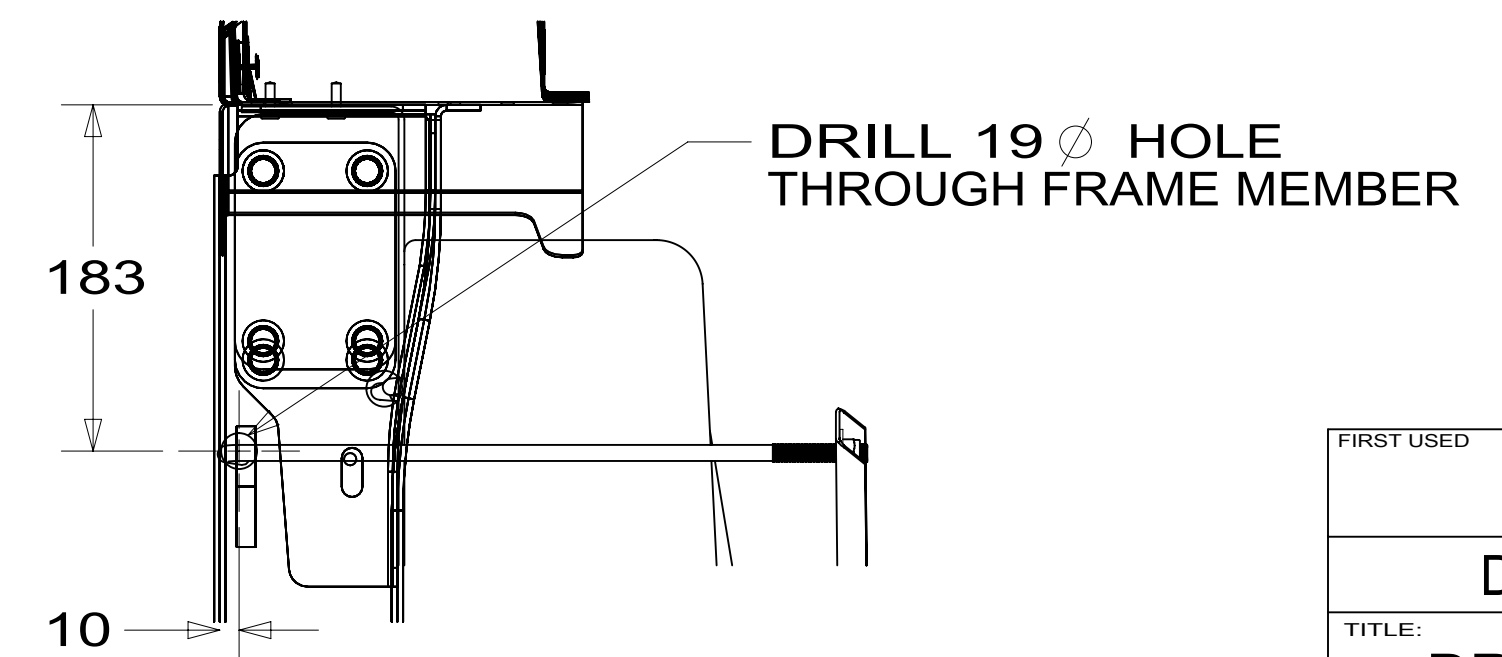
DRILL 19 Ø HOLE THROUGH FRAME MEMBER

SECTION DG-DG



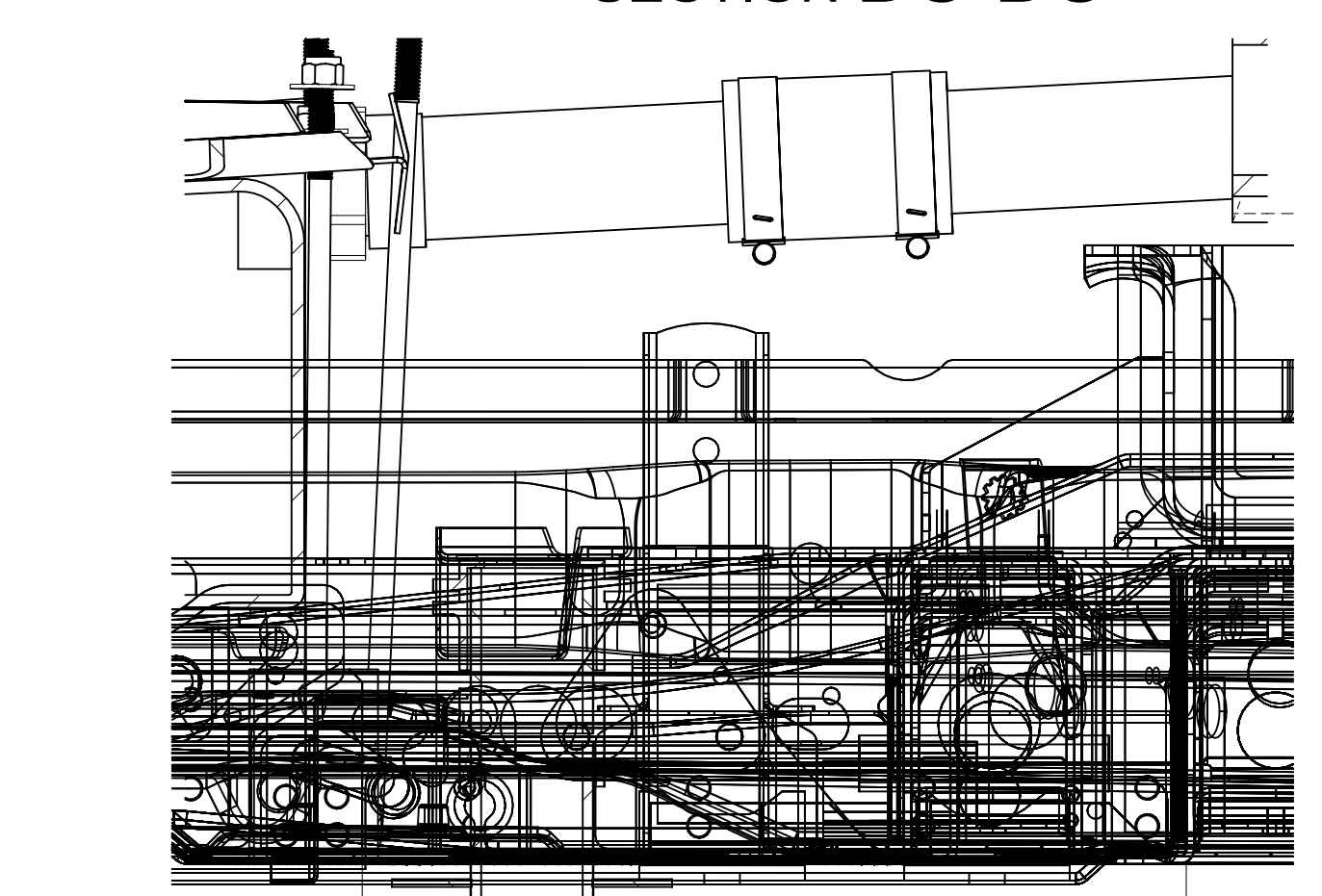
DRILL 19 Ø HOLE THROUGH FRAME MEMBER

SECTION DH-DH



DRILL 19 Ø HOLE THROUGH FRAME MEMBER

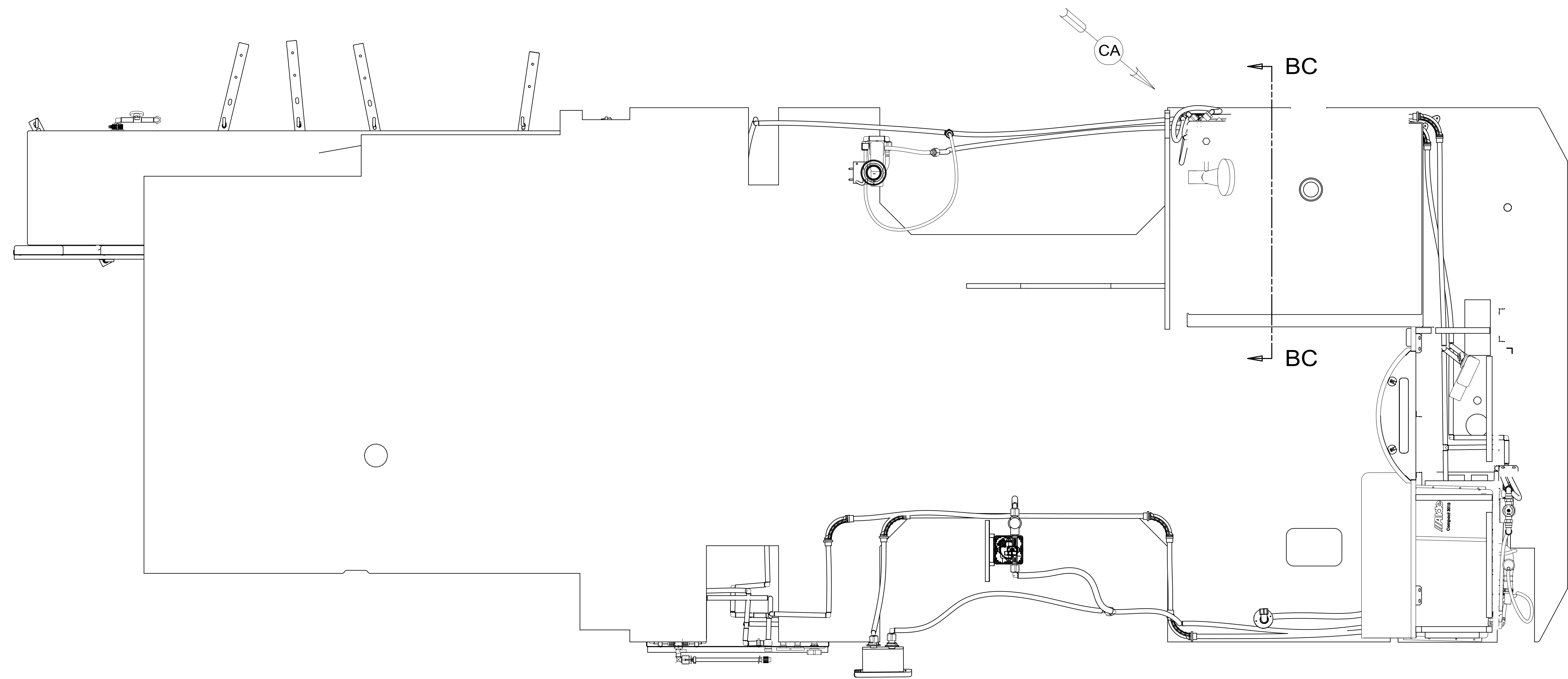
SECTION DJ-DJ



SECTION DD-DD

| | |
|------------|-----------------------|
| FIRST USED | 15 170C |
| TITLE: | DO NOT SCALE DRAWING |
| | DRAINAGE SYSTEM INSTL |
| SHEET 4 | PART NO 187390 REV |
| | 1 28-Oct-2015 |

187390



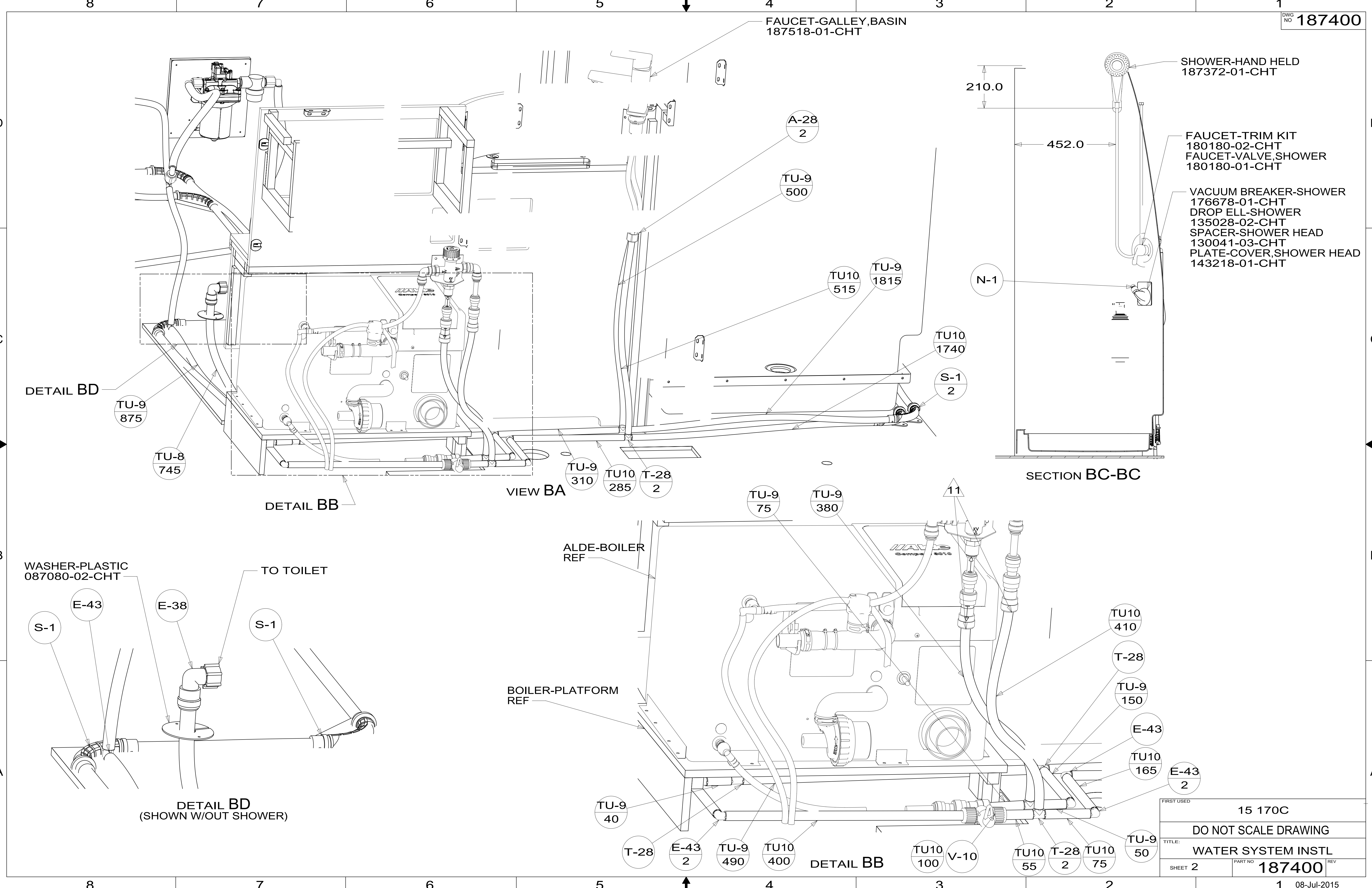
- NOTES:
1. PLASTIC FITTINGS TO BE SEALED WITH SEALANT 084456-01-000.
 2. TUBING TO BE INSTALLED WITH SUFFICIENT SLOPE TO PROVIDE DRAINAGE TO NEAREST VALVE.
 3. ALL TUBING TO BE SECURED AT 1200 INTERVALS MAXIMUM WITH CLAMP 010495-01-000 AND SCREW 000G67-10-12B OR EQUIVALENT.
 4. ADD TEFLON TAPE 010405-02-000.
 5. ADD PIPE WRAP (LADDER SCRAP 110157-02-000) INSULATION.
 6. LABEL HOT AND COLD SUPPLY TUBES AND TAPE FITTING TO TUBE BEFORE CABINET SET TO PREVENT MOVEMENT.
 7. ALL CRIMP FITTINGS TO 5/8" PEX TUBING REQUIRE 5/8" CLAMP 140171-04-000.
 8. ALL CRIMP FITTINGS TO 1/2" PEX TUBING REQUIRE 1/2" CLAMP 140171-03-000.
 9. PARTS TO BE ASSEMBLED AND ABLE TO BE REMOVED AND STORED AS A SINGLE ASM.
 10. SECURE VALVE HANDLE W/SILICOLN
 11. LINES AND/OR FITTINGS TO BE CONNECTED TO THE ALDE BOILER IN THESE AREAS.

FOR WATER CALLOUTS SEE DWG NO 116230-01-000

WINNEBAGO COPYRIGHT 2014 WINNEBAGO INDUSTRIES, INC.

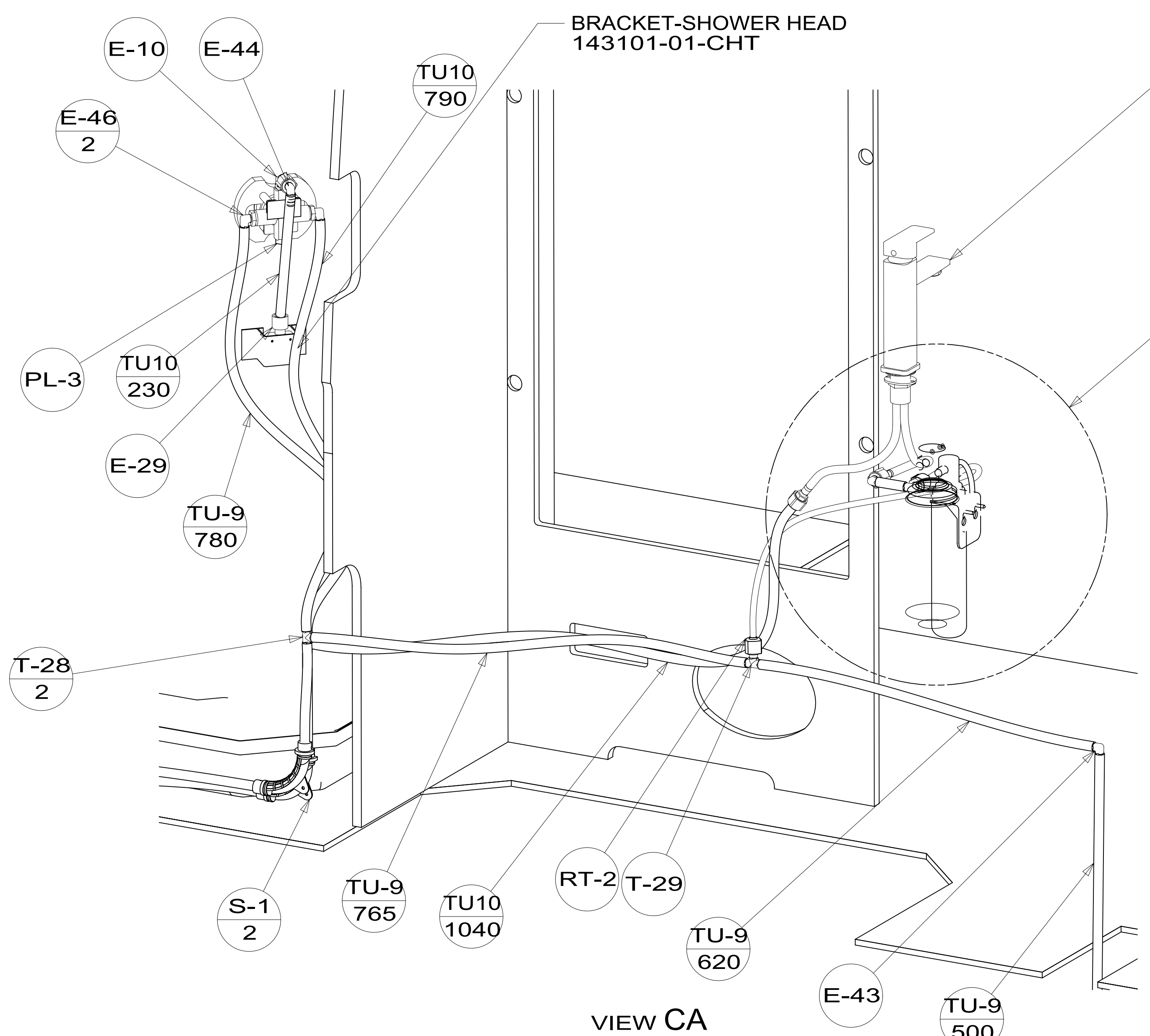
| | |
|-----------------------------|--|
| DFT-ORIG | ORIG. DATE |
| CHKR | ALL DIMENSIONS ARE IN MILLIMETERS |
| P.E. | |
| M.E. | FIRST USED |
| DSNR | 15 170C |
| UNSPECIFIED TOLERANCES ARE: | |
| WHOLE DIM (X) | : 3 |
| ONE-PLACE (X.X) | : 1.5 |
| TWO-PLACE (X.XX) | : 0.50 |
| ANGLE | : 1° |
| THIRD ANGLE PROJECTION | |
| DO NOT SCALE DRAWING | REFER TO ES0018 FOR FASTENER TIGHTENING GUIDELINES |
| TITLE: WATER SYSTEM INSTL | |
| SHEET 1 OF 4 | PART NO 187400 REV |
| REF: | 1 08-Jul-2015 |

187400



| | | |
|----------------------|--------------------|---------------|
| FIRST USED | 15 170C | |
| DO NOT SCALE DRAWING | | |
| TITLE: | WATER SYSTEM INSTL | |
| SHEET 2 | PART NO | 187400 |
| | | REV |
| | | 1 08-Jul-2015 |

187400



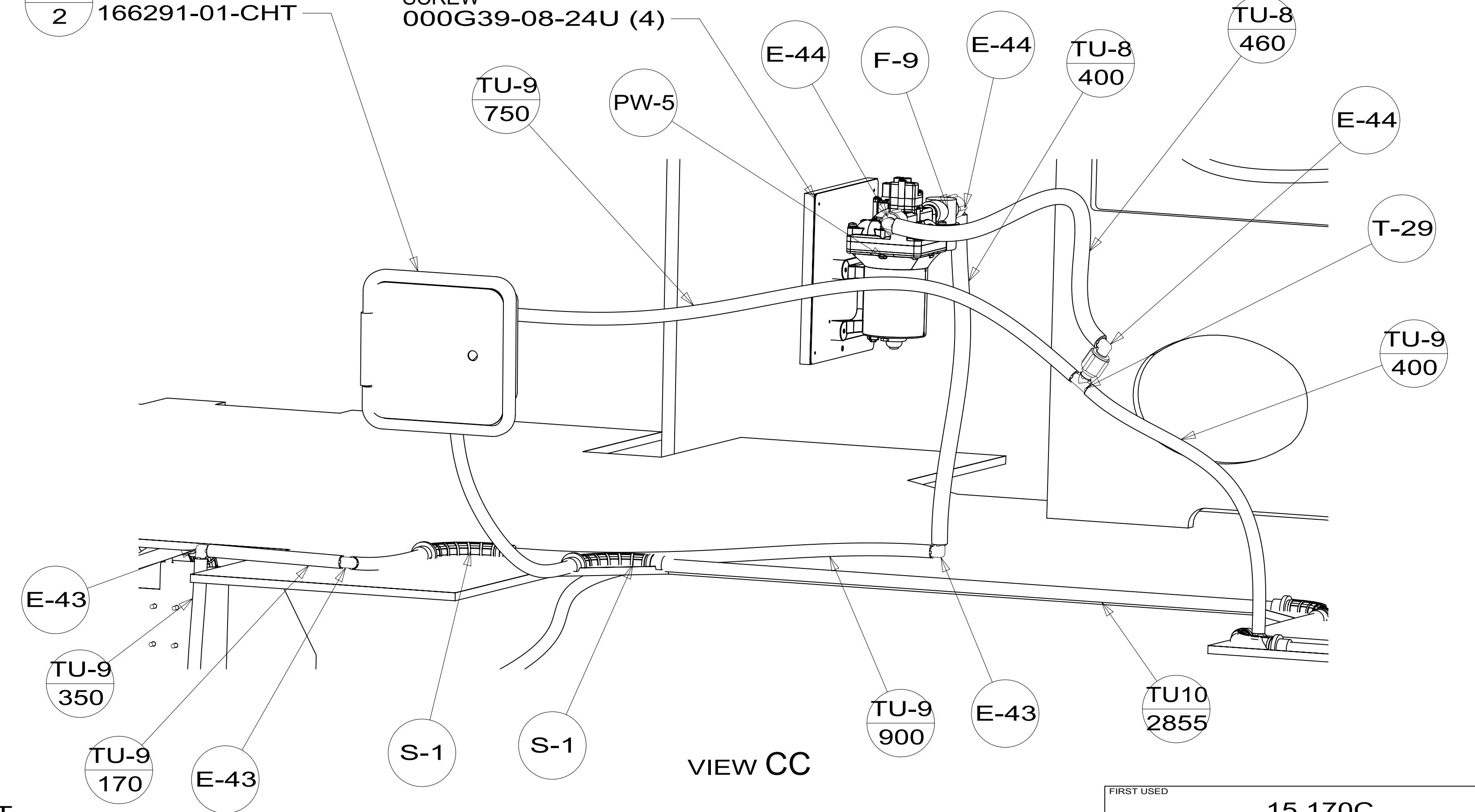
VIEW CA

FAUCET-GALLEY, BASIN
187519-01-CHT

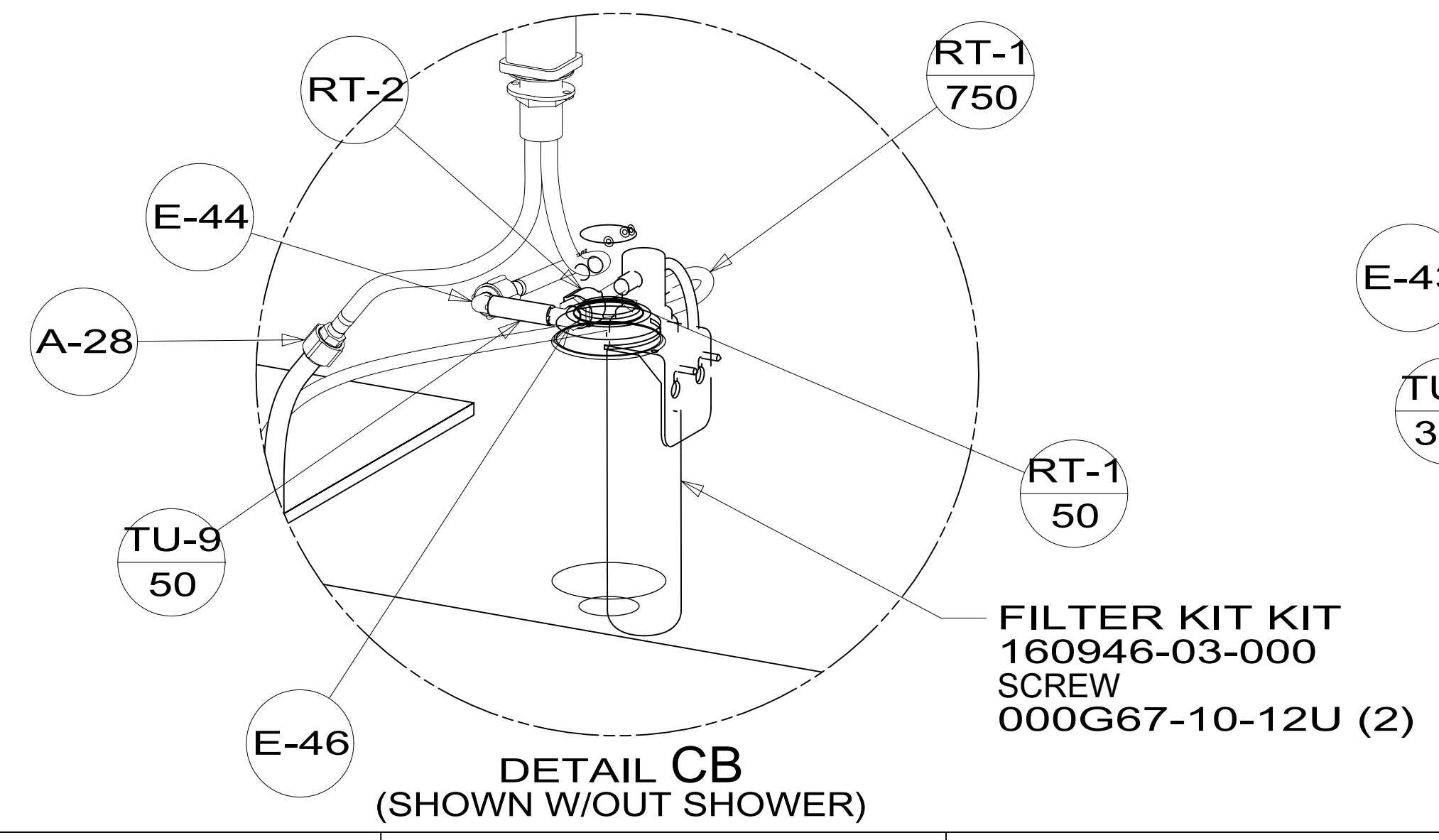
DETAIL CB

PANEL-WATER PUMP
149477-02-CHT
SCREW
000G39-08-16U (4)
FOAM
140364-01-CHT
SCREW
000G39-08-24U (4)

E-44 SHOWER-EXTERIOR
2 166291-01-CHT



VIEW CC



DETAIL CB
(SHOWN W/OUT SHOWER)

FILTER KIT KIT
160946-03-000
SCREW
000G67-10-12U (2)

| | | |
|------------|----------------------|-------------|
| FIRST USED | 15 170C | |
| TITLE: | DO NOT SCALE DRAWING | |
| SHEET 3 | PART NO | 187400 |
| | REV | 1 |
| | | 08-Jul-2015 |

187400

U-CHANNEL
165872-12-CHT
BOLT-HOOK
091274-08-000
BOLT HOOK
091274-06-000
WASHER
000E13-18-00U (2)
NUT
000D29-06-00U (2)

CLAMP-HOSE
062401-01-000

U-CHANNEL
165872-03-CHT (3)
BOLT-HOOK
091274-08-000 (3)
BOLT-HOOK
091274-06-000 (3)
WASHER
000E13-18-00U (6)
NUT
000D29-06-00U (6)

U-CHANNEL
165872-01-CHT
BOLT-HOOK
165872-15-CHT
BOLT-HOOK
091274-08-000 (2)
BOLT-HOOK
091274-06-000 (2)
WASHER
000E13-18-00U (8)
NUT
000D29-06-00U (8)

SEAL-BULB
158297-01-000
(450)
(PLACE SEAL ON
TOP OF CHANNEL)

TANK ASM-WATER,45 GAL
188906-02-000

NUT
000D39-06-00U
TOP SIDE OF
CHANNEL

SHIELD ASM-EXHAUST
166164-01-CHT

NUT
000D39-06-00U (3)
TOP SIDE OF
CHANNEL

ANGLE-W/HOLE
156309-05-CHT
SCREW
000G39-10-10U (4)

SHIELD ASM-EXHAUST
166164-09-CHT

CLAMP
010495-04-000 (3)
RIVET
113133-03-CHT (3)

WATER LINES AND TANKS UNDER FLOOR

DETAIL DC

VIEW DA

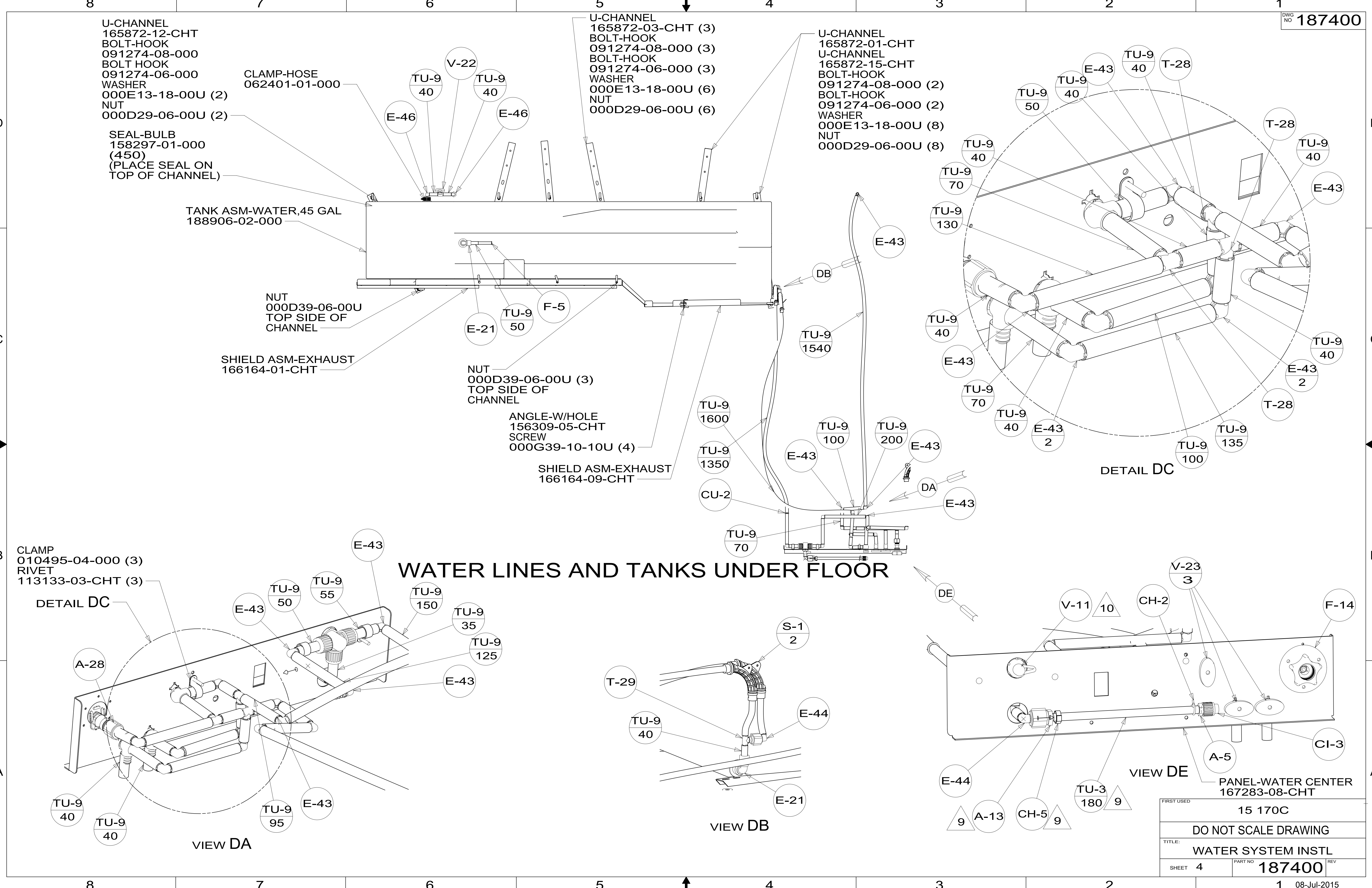
VIEW DB

VIEW DE

DETAIL DC

PANEL-WATER CENTER
167283-08-CHT

| | |
|---------------------------|--------------------|
| FIRST USED | 15 170C |
| DO NOT SCALE DRAWING | |
| TITLE: WATER SYSTEM INSTL | |
| SHEET 4 | PART NO 187400 REV |
| 1 08-Jul-2015 | |



187400