



DANGER

Danger of electrical shock, burns or death. Always remove all power sources before attempting any repair, service or diagnostic work. Power can be present from shore power, generator, inverter or battery. All power sources must be disabled and secured before performing any service.

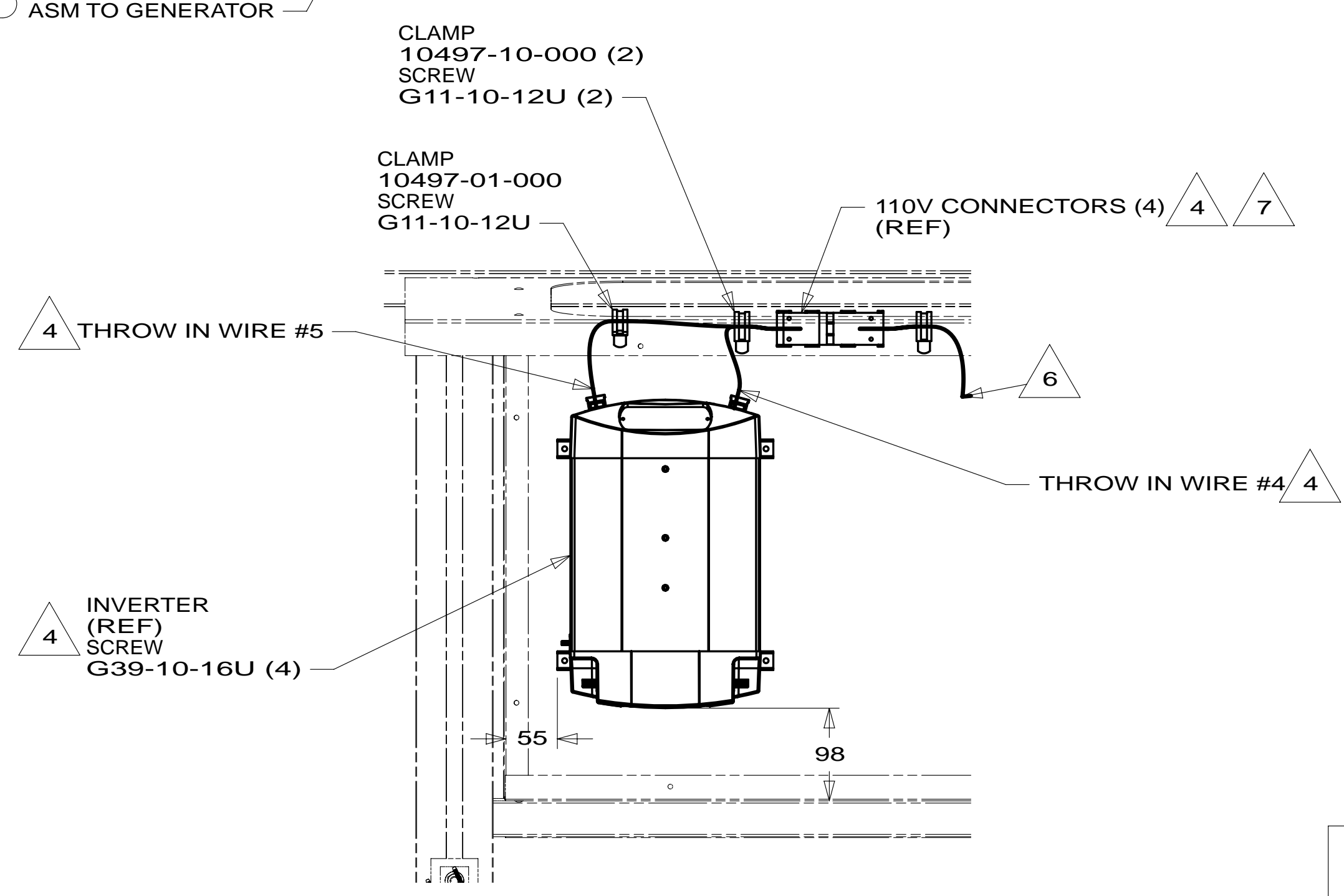
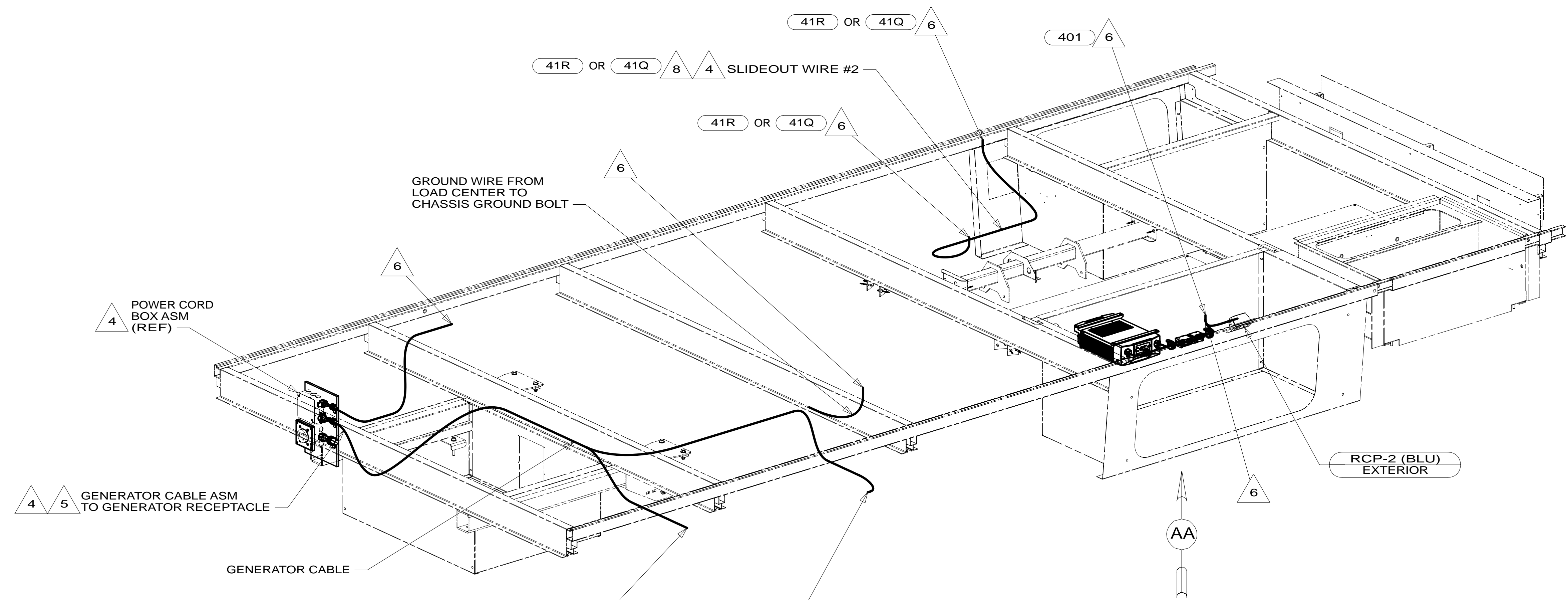


CAUTION

If you lack the skills, tools or equipment to perform diagnostic or repair work leave such work to an authorized Winnebago Industries dealer or other qualified shop.

DRAWING NO.	FEATURE
186928-01	-----
186928-11	1B1 12D
186928-15	265 12D

RELEASE	REV/DATE	DWG NO	186928
REV ZONE	REVISION RECORD	DATE	DTR-ORIG



- 41Q SOFA/SLEEPER-ULTRALEATHER
- 41R SOFA/SLEEPER
- 401 INVERTER-DC/AC, 1000 WATT
- 40A INVERTER-DC/AC WITHOUT
- 33F GEN-3.2 KW ONAN DIESEL
- 52G GEN-3.6KW ONAN LP MICROQUIET
- 12D ELECTRICAL SYSTEM 30 AMP
- 265 CODES/STANDARDS-CSA/CMVSS
- 1B1 CODES/STANDARDS USA

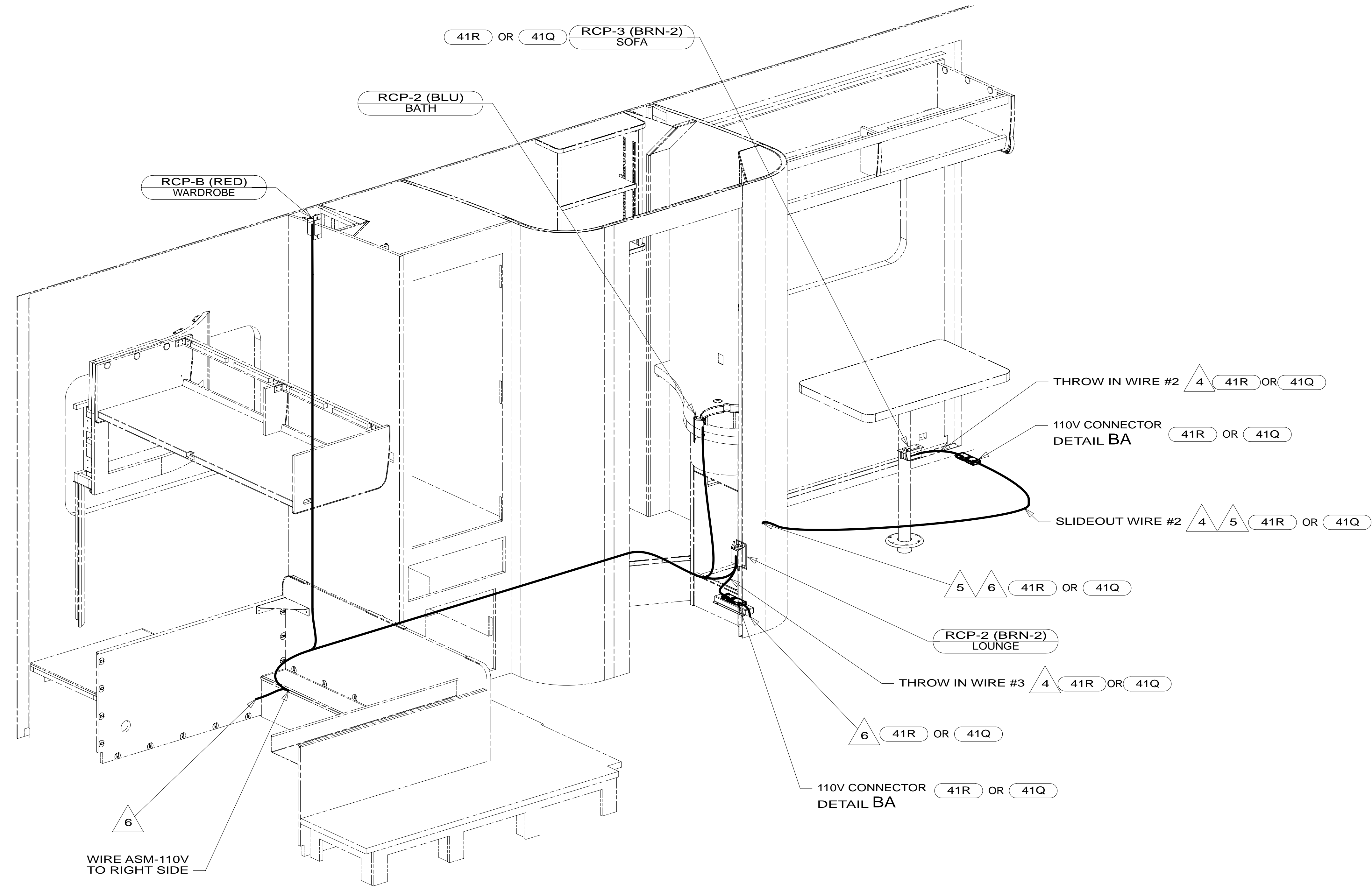
- NOTES:
- 8 ROUTE SLIDEOUT WIRE WITH WIRE ASM-CHASSIS PRIOR TO INSTALLING MAIN FLOOR ASM.
 - 7 LEAVE WIRES ABOVE FLOOR AND CONNECT BRN AND BRN-2 110V CONNECTORS TOGETHER WITH OPTION 40A
 - 6 WIRES ROUTED THROUGH FLOOR IN THIS AREA.
 - 5 SEE GENERATOR INSTL FOR ADDITIONAL INFORMATION.
 - 4 SEE LOAD CENTER/ATS ASM FOR ADDITIONAL INFORMATION.
3. ALL GROUND WIRES TO BE COVERED WITH TUBING 8041-02-000.
 2. ALL 110V WIRE ARE TO BE CLAMPED WITH CLAMP 10497-05-000 WITHIN 200MM OF OUTLET BOXES, USE SCREW G67-10-12B.
 1. ALL WIRES TO BE SECURED WITH CLAMP 10495-01-000 OR CLIP 80734-01-000 EVERY 600MM. USE SCREW G67-10-12B UNLESS OTHERWISE SPECIFIED.

FOR ELECTRICAL TORQUE SPECIFICATIONS SEE DWG NO. 128783-01-000

FOR ELECTRICAL CALLOUTS SEE DWG NO. 121339-01-000

		COPYRIGHT 2013 WINNEBAGO INDUSTRIES, INC.
UNSPECIFIED TOLERANCES ARE: WHOLE DIM (X) : 3 ONE-PLACE (X.X) : 1.5 TWO-PLACE (X.XX) : 0.50 ANGLE : 1°	MATERIAL: REFER TO ES0018 FOR FASTENER TIGHTENING GUIDELINES	14 524G
DO NOT SCALE DRAWING		
TITLE: WIRING INSTL-BODY,110V		
SHEET 1 OF 5	PART NO 186928	REV 1
REF: 1 12-Dec-2013		

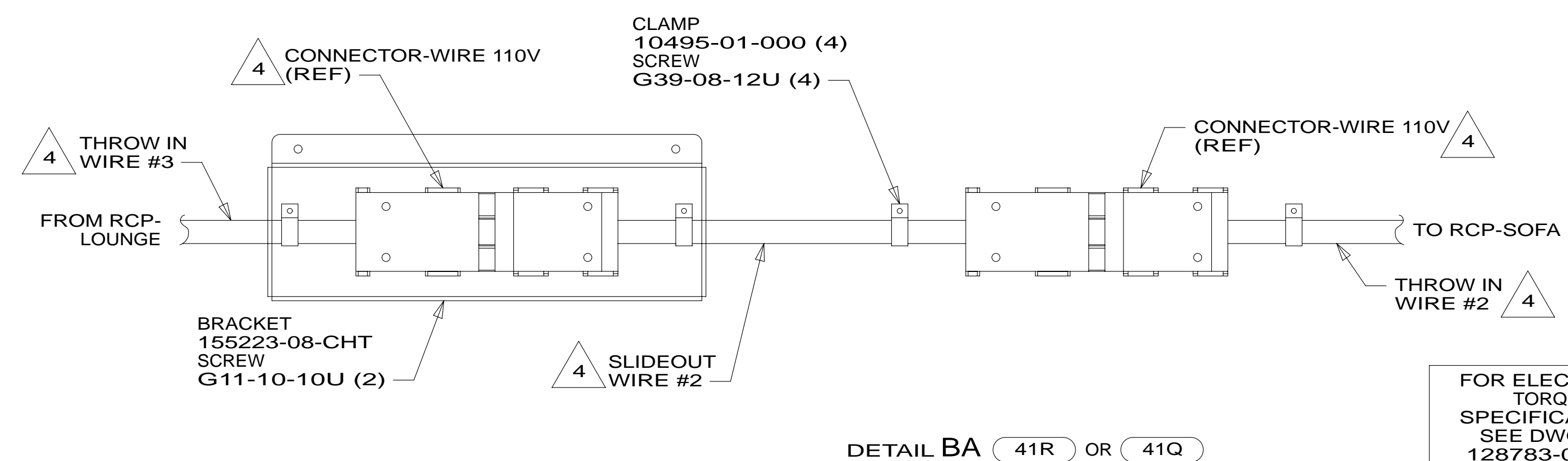
* 186928 *



- 6 WIRES ROUTED THROUGH FLOOR IN THIS AREA.
- 5 WIRE ROUTED WITH 12V WIRING. SEE WIRING INSTL-BODY,12V FOR ADDITIONAL INFORMATION.
- 4 SEE LOAD CENTER/ATS ASM FOR ADDITIONAL INFORMATION.
- 3 WIRE ROUTED IN ROOF.

2. ALL 110V WIRE TO BE CLAMPED WITH CLAMP 10495-01-000 WITHIN 200MM OF OUTLET BOXES, USE SCREW G67-10-12B.
1. ALL WIRES TO BE SECURED WITH CLAMP 10495 OR 10497 OR WIRE TIE 8343 OR 108046 EVERY 600MM, USE SCREW G67-XX-XXX OR G56-XX-XXX AS APPROPRIATE FOR INSTALLATION.

NOTES:



FOR ELECTRICAL TORQUE SPECIFICATIONS SEE DWG NO. 128783-01-000

FOR ELECTRICAL CALLOUTS SEE DWG NO. 121339-01-000

- 41Q SOFA/SLEEPER-ULTRALEATHER
- 41R SOFA/SLEEPER
- 22K DINETTE L-SHAPED-SECTIONAL
- 12D ELECTRICAL SYSTEM 30 AMP
- 265 CODES/STANDARDS-CSA/CMVSS
- 1B1 CODES/STANDARDS USA

1B1 265 12D

FIRST USED

14 524G

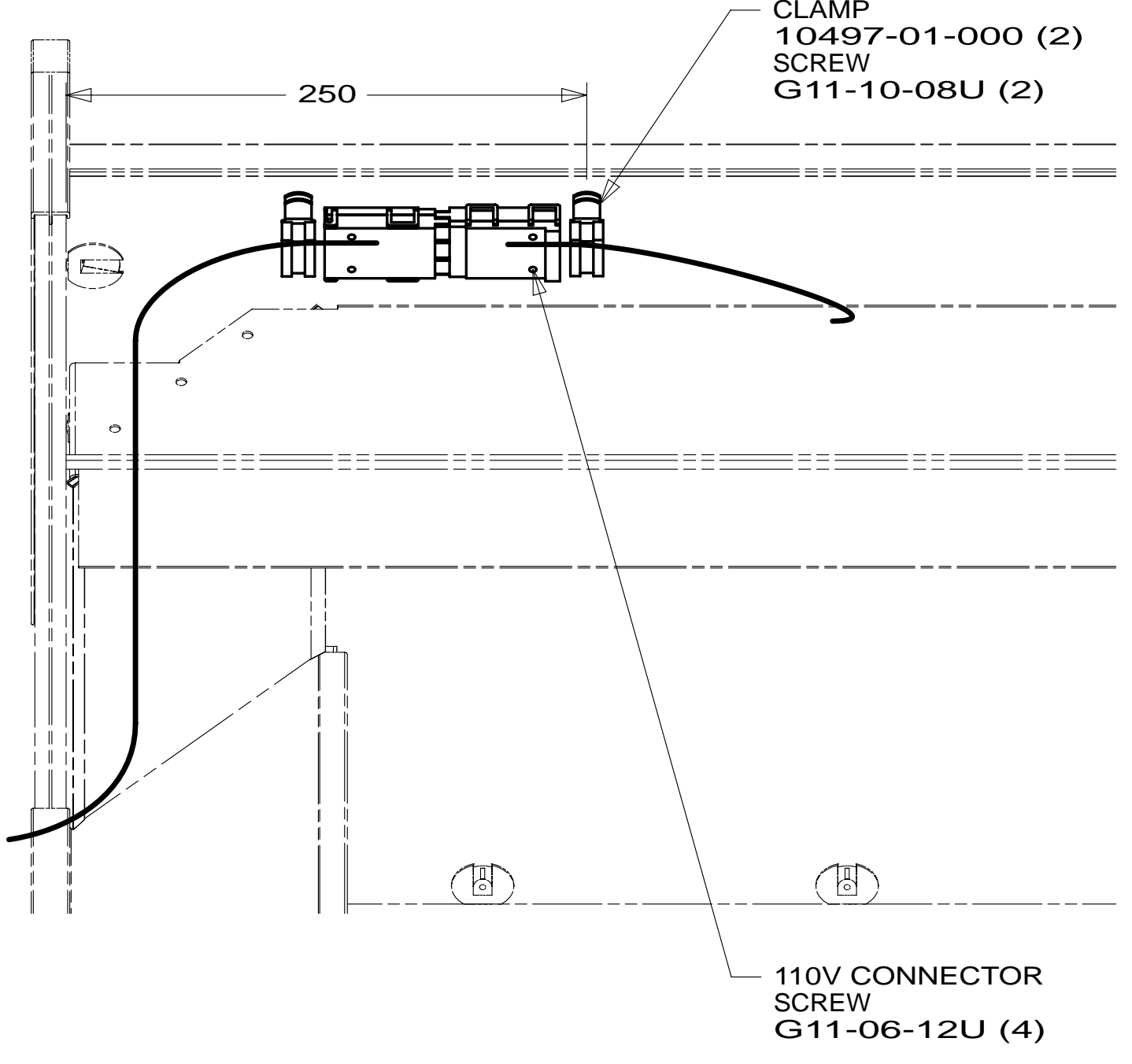
DO NOT SCALE DRAWING

TITLE: **WIRING INSTL-BODY, 110V**

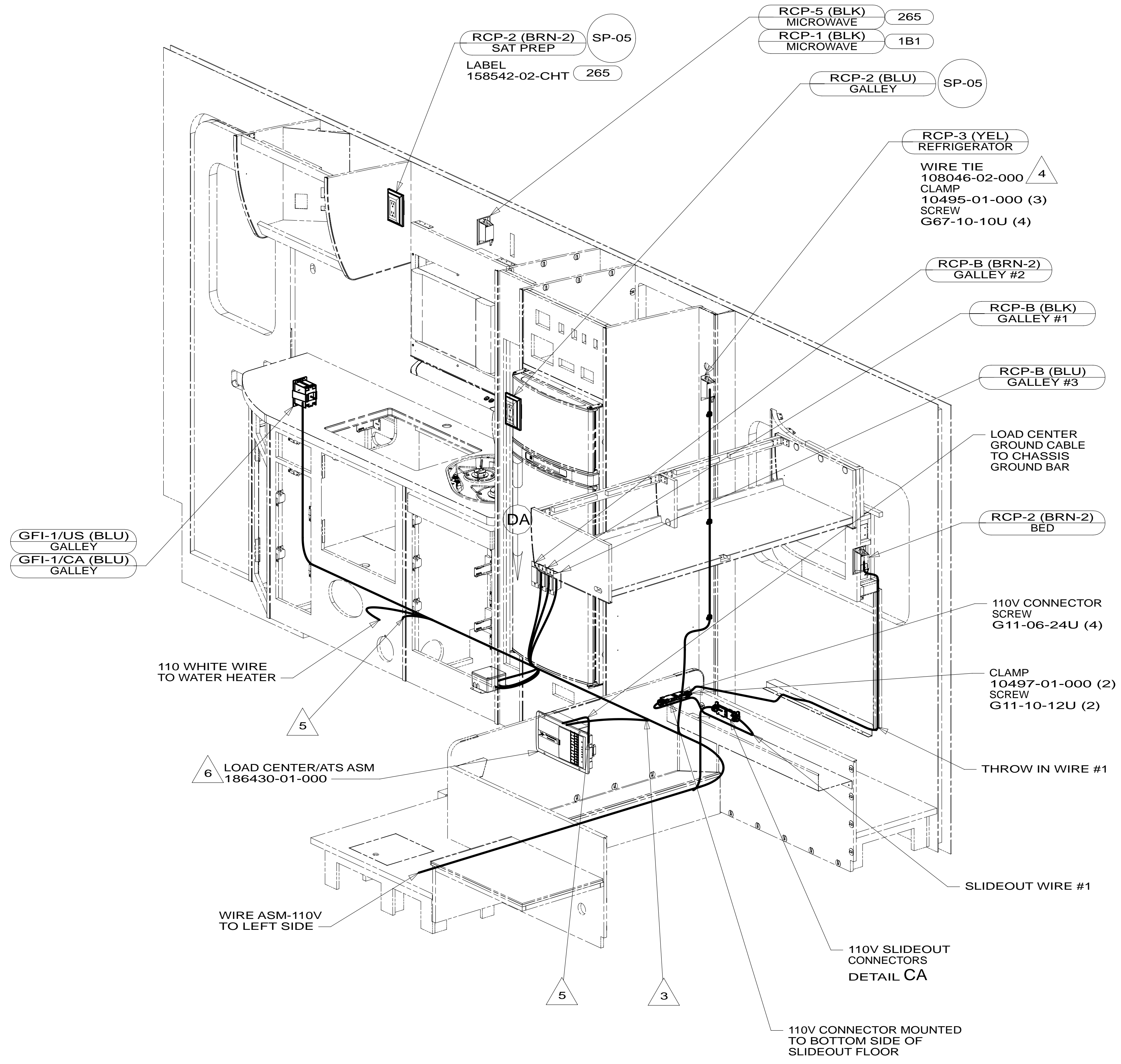
SHEET 2 PART NO **186928** REV

12-Dec-2013

* 186928 *



DETAIL CA



- 6 SEE LOAD CENTER/ATS ASM FOR ADDITIONAL INFORMATION.
 - 5 WIRE ROUTED THROUGH FLOOR IN THIS AREA.
 - 4 LOCATE REFRIGERATOR RCP SO THAT RCP IS ACCESSIBLE FROM REFRIGERATOR VENT AND AWAY FROM REFRIGERATOR COILS. SECURE REFRIGERATOR POWER CORD AWAY FROM COILS USING WIRE TIE.
 - 3 (BRN-2) 11,000 DROP AND (BLU) 6500 DROP TO LEFT SIDE.
2. ALL 110V WIRE TO BE CLAMPED WITH CLAMP 10497-05-000 WITHIN 200MM OF OUTLET BOXES, USE SCREW G67-10-12B.
 1. ALL WIRES TO BE SECURED WITH CLAMP 10495 OR 10497 OR WIRE TIE 8343 OR 108046 EVERY 600MM, USE SCREW G67-XX-XXX OR G56-XX-XXX AS APPROPRIATE FOR INSTALLATION.

NOTES:

- 40A INVERTER-DC/AC WITHOUT
- 12D ELECTRICAL SYSTEM 30 AMP
- 265 CODES/STANDARDS-CSA/CMVSS
- 1B1 CODES/STANDARDS USA

1B1 265 12D

FIRST USED	14 524G	
DO NOT SCALE DRAWING		
TITLE: WIRING INSTL-BODY, 110V		
SHEET 3	PART NO 186928	REV

FOR ELECTRICAL TORQUE SPECIFICATIONS SEE DWG NO. 128783-01-000

FOR ELECTRICAL CALLOUTS SEE DWG NO. 121339-01-000

* 186928 *

8

7

6

5

↓

4

3

2

1

D

D

C

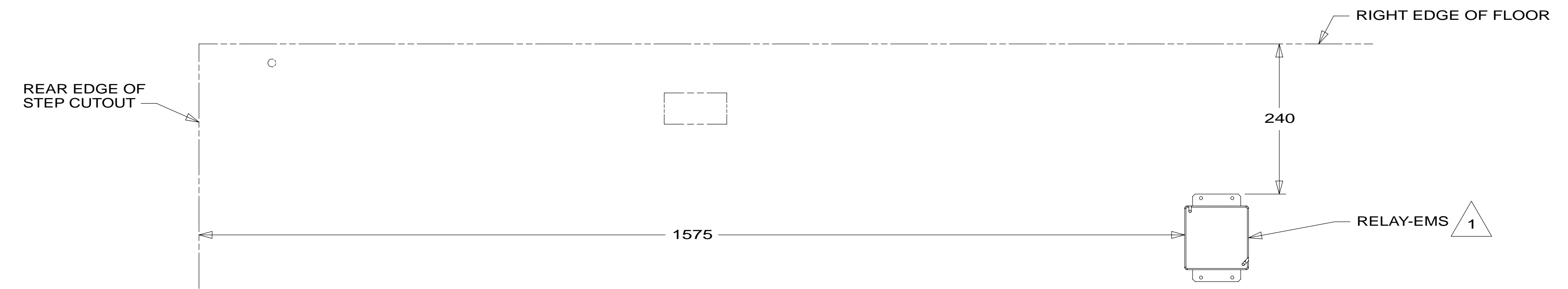
C

B

B

A

A



NOTES:

1 SEE LOAD CENTER/ATS ASM FOR ADDITIONAL INFORMATION.

FOR ELECTRICAL TORQUE SPECIFICATIONS SEE DWG NO. 128783-01-000

FOR ELECTRICAL CALLOUTS SEE DWG NO. 121339-01-000

- 12D ELECTRICAL SYSTEM 30 AMP
- 265 CODES/STANDARDS-CSA/CMVSS
- 1B1 CODES/STANDARDS USA

1B1 265 12D

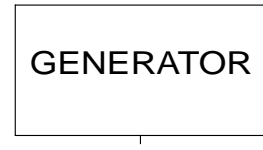
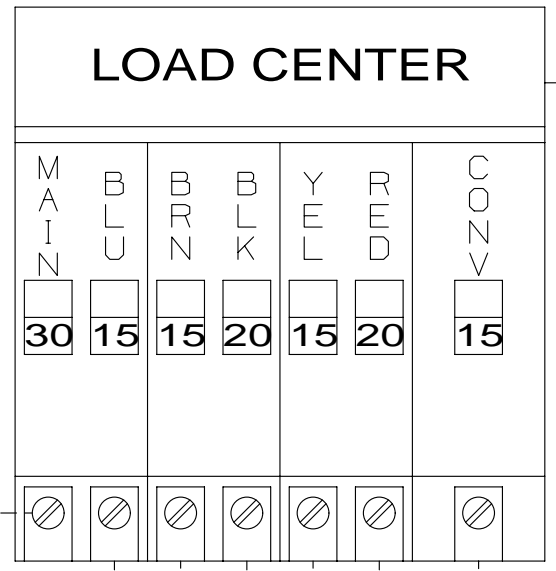
FIRST USED **14 524G**

DO NOT SCALE DRAWING

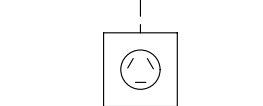
TITLE: **WIRING INSTL-BODY, 110V**

SHEET 4 PART NO **186928** REV

* 186928 * A



10-2



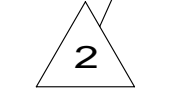
POWER CORD ASM



10-2

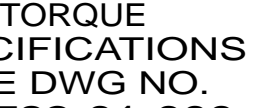
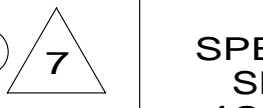
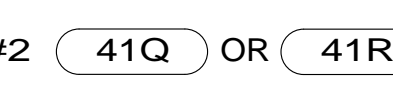
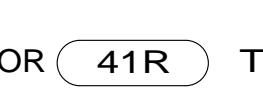
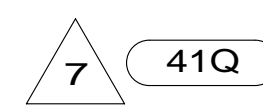
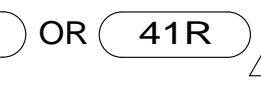
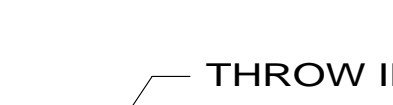
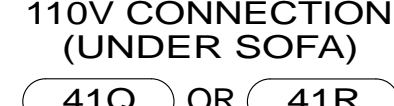
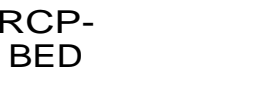
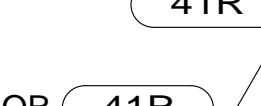
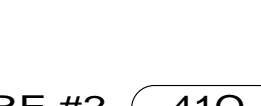
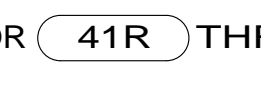
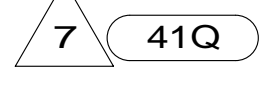
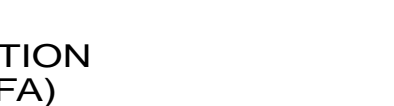
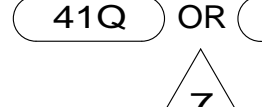
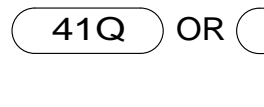
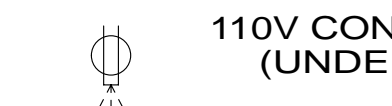
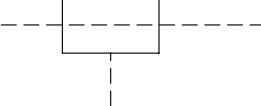
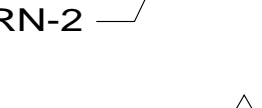
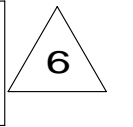
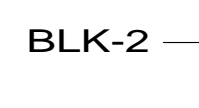
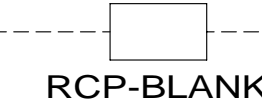
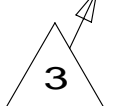
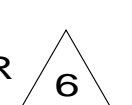
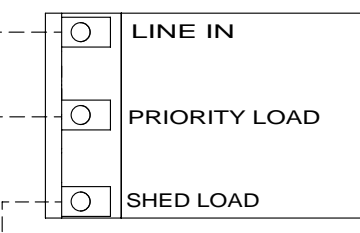
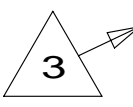
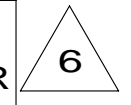
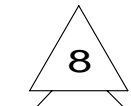


10-2



14-2 12-2 12-2

14-2 14-2



- NOTES:
- 8 WIRE AND RECEPTACLE SUPPLIED INTREGATED INTO LOAD CENTER DISTRIBUTION PANEL.
 - 7 NOT USED WITH 22K.
 - 6 SEE MANUFACTURERS DIAGRAM.
 - 5 POWER CORD SUPPLIED WITH INVERTER.
 - 4 WIRE ROUTED IN ROOF.
 - 3 WIRE ROUTED IN SIDEWALL.
 - 2 WIRE ROUTED THRU FLOOR.
 - 1 ALL WIRES DOWN STREAM AND INCLUDING THIS OUTLET ARE GROUND FAULT CIRCUIT INTERRUPT PROTECTED.

- 22K DINETTE L-SHAPED-SECTIONAL
- 41R SOFA/SLEEPER
- 41Q SOFA/SLEEPER-ULTRALEATHER
- 40A INVERTER-DC/AC WITHOUT
- 401 INVERTER-DC/AC, 1000 WATT
- 12D ELECTRICAL SYSTEM 30 AMP
- 265 CODES/STANDARDS-CSA/CMVSS
- 1B1 CODES/STANDARDS USA

FOR ELECTRICAL TORQUE SPECIFICATIONS SEE DWG NO. 128783-01-000

FOR ELECTRICAL CALLOUTS SEE DWG NO. 121339-01-000

FIRST USED

14 524G

DO NOT SCALE DRAWING

TITLE: **WIRING INSTL-BODY, 110V**

SHEET 5 PART NO **186928** REV

12-Dec-2013

* 186928 A *