



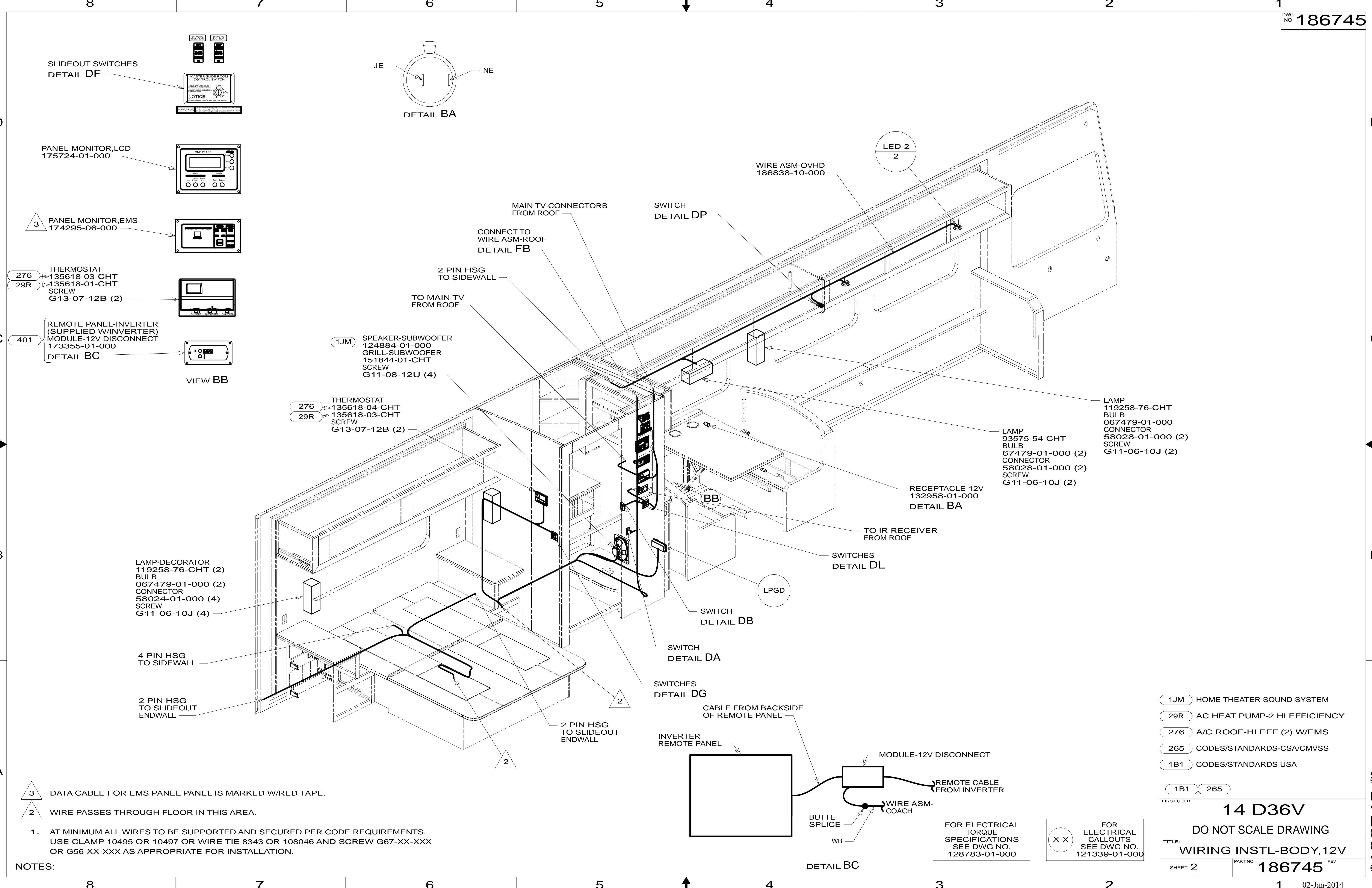
DANGER

Danger of electrical shock, burns or death. Always remove all power sources before attempting any repair, service or diagnostic work. Power can be present from shore power, generator, inverter or battery. All power sources must be disabled and secured before performing any service.



CAUTION

If you lack the skills, tools or equipment to perform diagnostic or repair work leave such work to an authorized Winnebago Industries dealer or other qualified shop.



- 276 135618-03-CHT
- 29R 135618-01-CHT
- G13-07-12B (2)
- 401 REMOTE PANEL-INVERTER (SUPPLIED W/INVERTER) MODULE-12V DISCONNECT 173355-01-000
- DETAIL BC
- VIEW BB

- 276 THERMOSTAT 135618-04-CHT
- 29R 135618-03-CHT
- G13-07-12B (2)

- LAMP-DECORATOR 119258-76-CHT (2)
- BULB 067479-01-000 (2)
- CONNECTOR 58024-01-000 (4)
- SCREW G11-06-10J (4)

- 4 PIN HSG TO SIDEWALL
- 2 PIN HSG TO SLIDEOUT ENDWALL

- 2 PIN HSG TO SLIDEOUT ENDWALL

- 3 DATA CABLE FOR EMS PANEL IS MARKED W/RED TAPE.
- 2 WIRE PASSES THROUGH FLOOR IN THIS AREA.

1. AT MINIMUM ALL WIRES TO BE SUPPORTED AND SECURED PER CODE REQUIREMENTS. USE CLAMP 10495 OR 10497 OR WIRE TIE 8343 OR 108046 AND SCREW G67-XX-XXX OR G56-XX-XXX AS APPROPRIATE FOR INSTALLATION.

NOTES:

- 1JM HOME THEATER SOUND SYSTEM
- 29R AC HEAT PUMP-2 HI EFFICIENCY
- 276 A/C ROOF-HI EFF (2) W/EMS
- 265 CODES/STANDARDS-CSA/CMVSS
- 1B1 CODES/STANDARDS USA

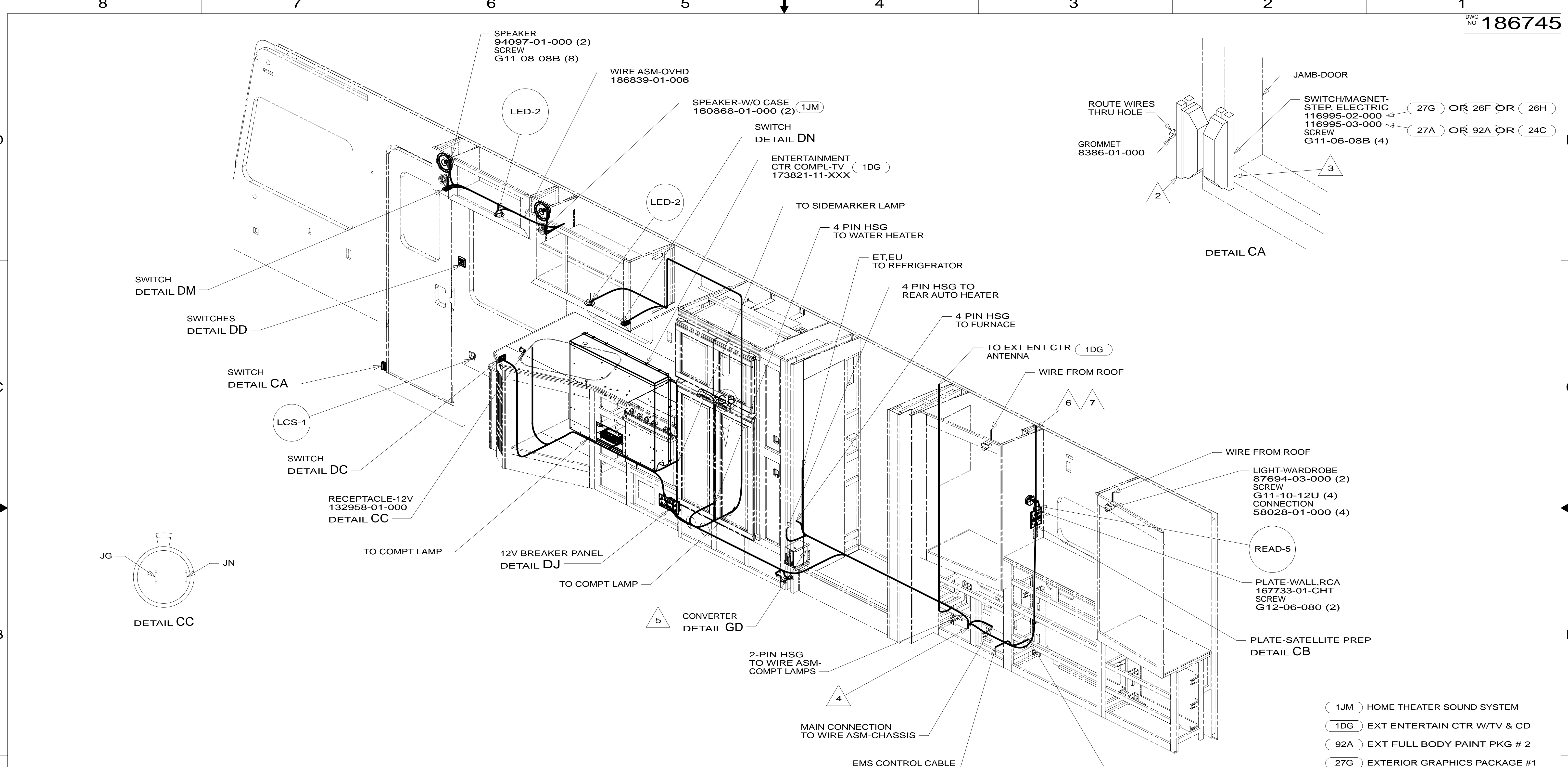
1B1	265
FIRST USED	
14 D36V	
DO NOT SCALE DRAWING	
TITLE: WIRING INSTL-BODY,12V	
SHEET 2	PART NO 186745 REV

FOR ELECTRICAL TORQUE SPECIFICATIONS SEE DWG NO. 128783-01-000

FOR ELECTRICAL CALLOUTS SEE DWG NO. 121339-01-000

DETAIL BC

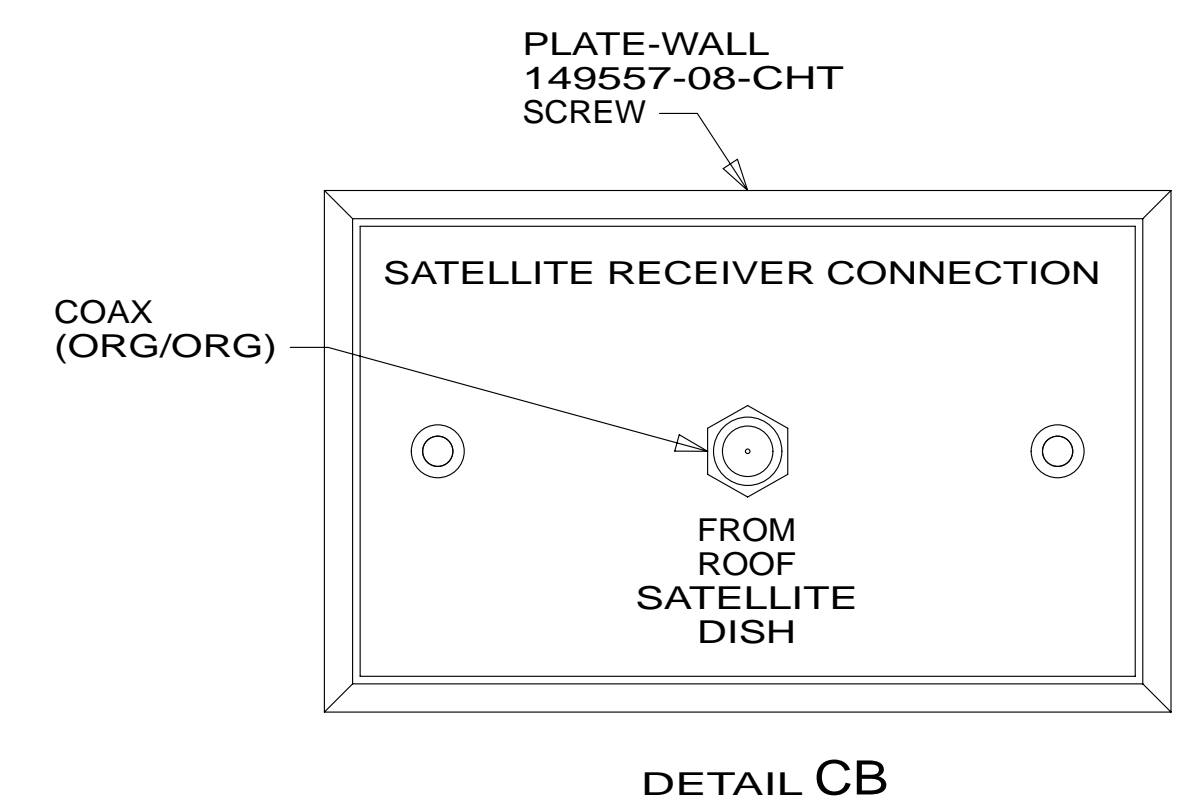
* 186745 *



- 7 ROUTE RCA & COAX TO BEDROOM TV THROUGH THE ROUTED PATH IN SIDEWALL.
- 6 SEE WIRING INSTL-TV/DVD FOR ADDITIONAL INFORMATION.
- 5 FOR CONVERTER POSITIONING, SEE DETAIL GD.
- 4 WIRE PASSES THROUGH FLOOR IN THIS AREA.
- 3 MOUNT MAGNET USING PILOT HOLES IN SCREEN DOOR FRAME, MOUNT WITH MAGNET TOWARD SWITCH.
- 2 MOUNT SWITCH AND SPACER TO BLOCK ON JAMB, ADJUST HEIGHT TO MATCH MAGNET.

1. AT MINIMUM ALL WIRES TO BE SUPPORTED AND SECURED PER CODE REQUIREMENTS. USE CLAMP 10495 OR 10497 OR WIRE TIE 8343 OR 108046 AND SCREW G67-XX-XXX OR G56-XX-XXX AS APPROPRIATE FOR INSTALLATION.

NOTES:



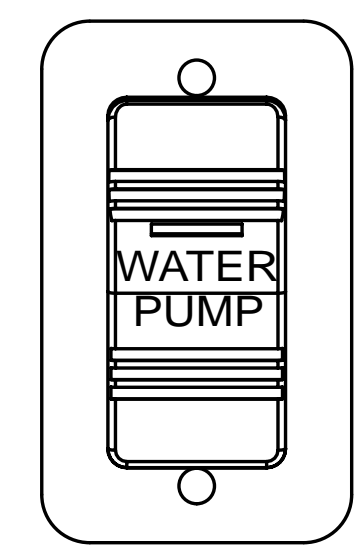
FOR ELECTRICAL TORQUE SPECIFICATIONS SEE DWG NO. 128783-01-000

FOR ELECTRICAL CALLOUTS SEE DWG NO. 121339-01-000

- 1JM HOME THEATER SOUND SYSTEM
- 1DG EXT ENTERTAIN CTR W/TV & CD
- 92A EXT FULL BODY PAINT PKG # 2
- 27G EXTERIOR GRAPHICS PACKAGE #1
- 27A EXT FULL BODY PAINT PKG #1
- 26H EXT GRAPHIC/PAINT-DLX PKG 2
- 26F EXT GRAPHIC/PAINT DLX PKG 1
- 24C EXT FULL BODY PAINT PKG # 3
- 265 CODES/STANDARDS-CSA/CMVSS
- 1B1 CODES/STANDARDS USA

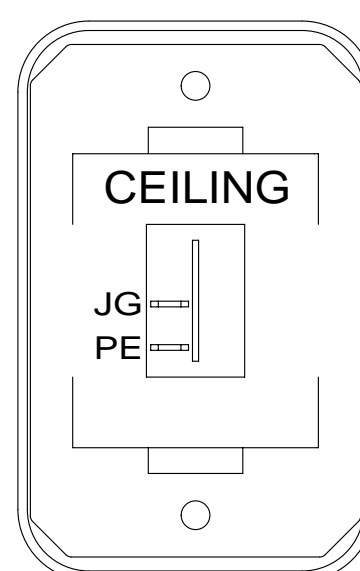
FIRST USED		14 D36V	
DO NOT SCALE DRAWING			
TITLE: WIRING INSTL-BODY,12V			
SHEET 3	PART NO	186745	REV
		1	02-Jan-2014

* 186745 *



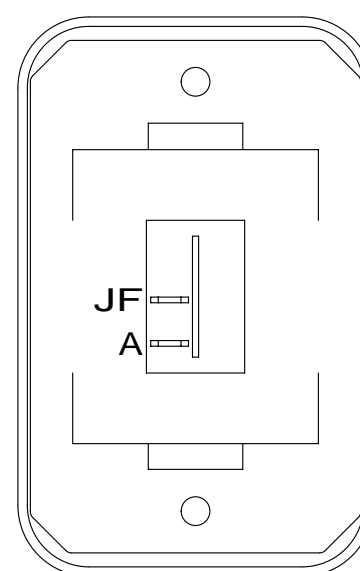
SWITCH-PUMP
108357-21-000
ACTUATOR
108356-23-CHT
PLATE
098351-07-CHT
SCREW
G11-06-10U (2)

DETAIL DA



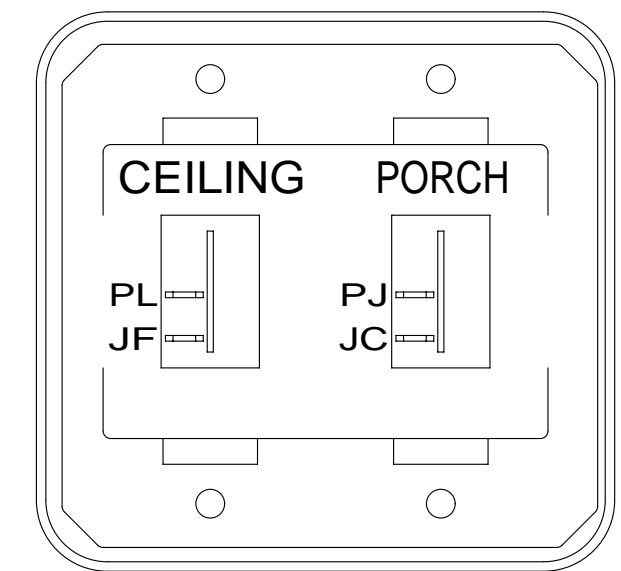
SWITCH-ROCKER
135740-01-CHT
SWITCH-BASE
135741-01-CHT
SWITCH-BEZEL
135742-07-CHT
SCREW
G11-08-08U (2)

DETAIL DB



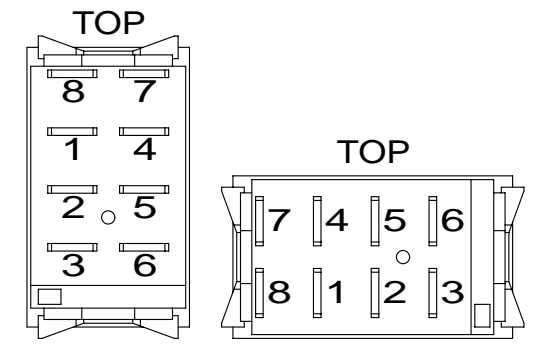
SWITCH-ROCKER
135740-01-CHT
SWITCH-BASE
135741-01-CHT
SWITCH-BEZEL
135742-01-CHT
SCREW
G11-08-08U (2)

DETAIL DC



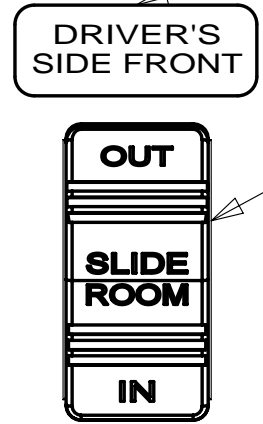
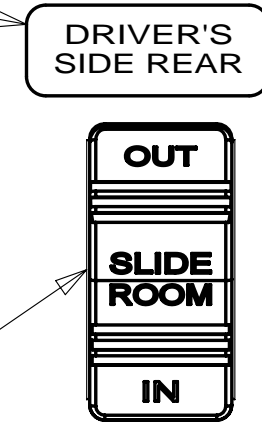
SWITCH-ROCKER
135740-01-CHT (2)
SWITCH-BASE
135741-02-CHT
SWITCH-BEZEL
135742-19-CHT
SCREW
G11-08-08U (4)

DETAIL DD



DETAIL DE

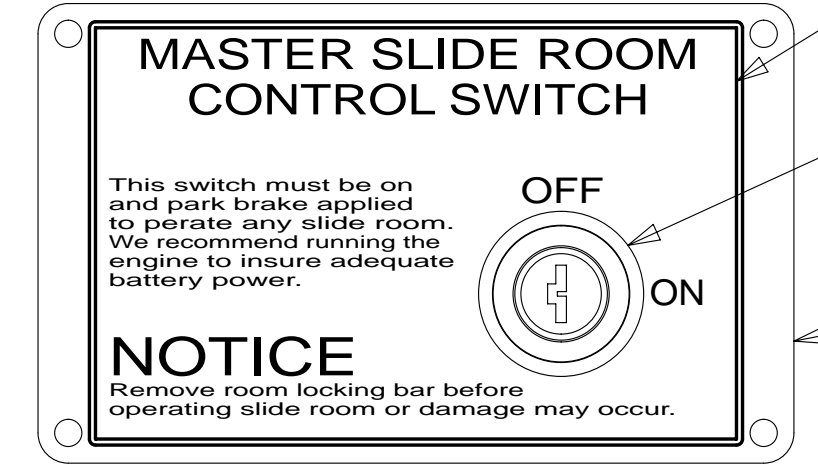
LABEL-SLIDEOUT,
DRIVER,REAR
163992-02-CHT



LABEL-SLIDEOUT,
DRIVER,FRONT
163992-01-CHT

SWITCH
108357-06-000
ACTUATOR
108356-24-CHT
(CIRCUITS
BBM,BBN,DT,
BBA,DDJ,BBA)

SWITCH
108357-06-000
ACTUATOR
108356-24-CHT
(CIRCUITS
DR,DT,DU,
BBA,DDJ,BBA)



LABEL-SLIDEROOM
CONTROL,MAN
163988-01-CHT

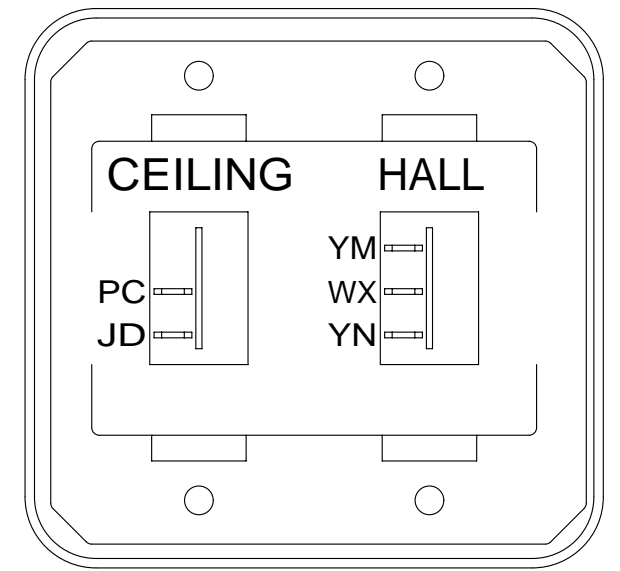
SWITCH-KEY,SPST-
ILLINOIS LCK
163097-01-000
(CONNECTS TO
CIRCUITS DY & DDJ)

PLATE-KEY,
SLIDE ROOM
163987-01-CHT
SCREW
76790-05-000 (4)

WARNING CRUSH HAZARD. Keep people and objects clear of the inside and the outside of the slideout room when operating. Failure to comply could result in death or serious injury.

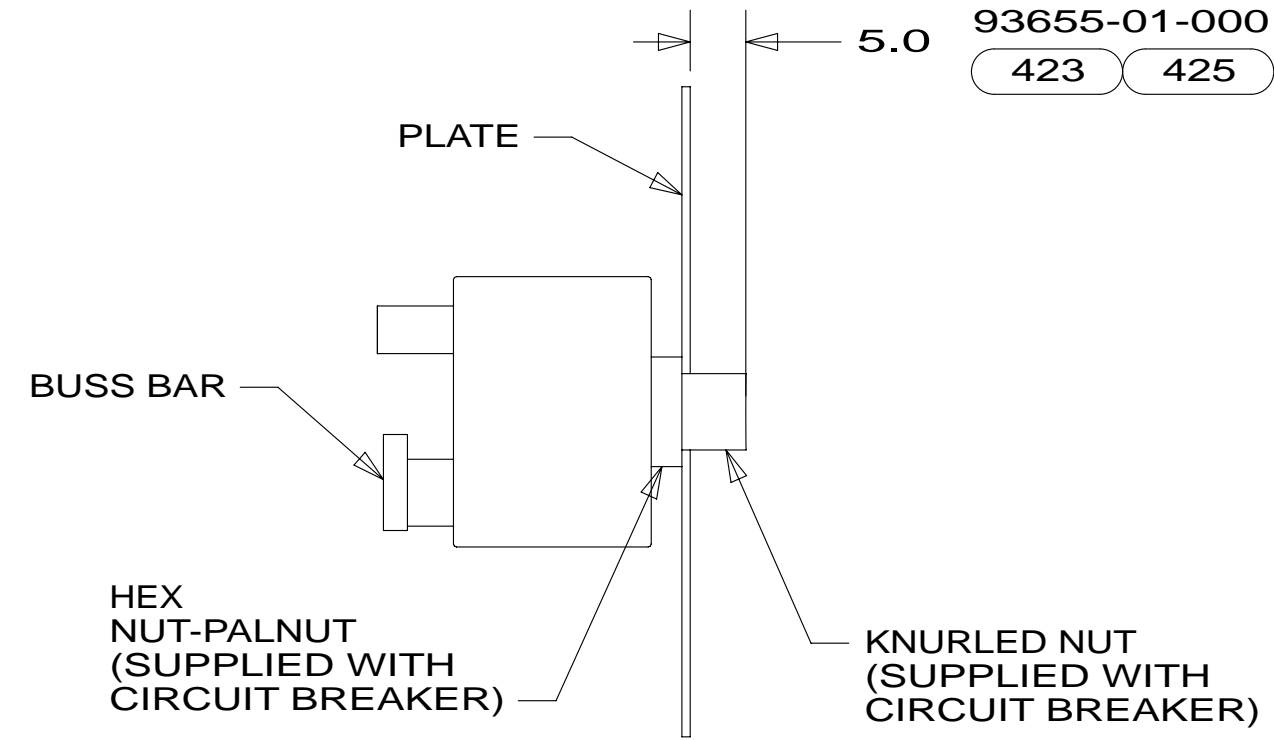
LABEL-WARNING,SLIDEOUT
116549-01-000

DETAIL DF



SWITCH-ROCKER
135740-01-CHT
SWITCH-BASE
135741-02-CHT
SWITCH-BEZEL
135742-16-CHT
SCREW
G11-08-08U (4)

DETAIL DG



DETAIL DK

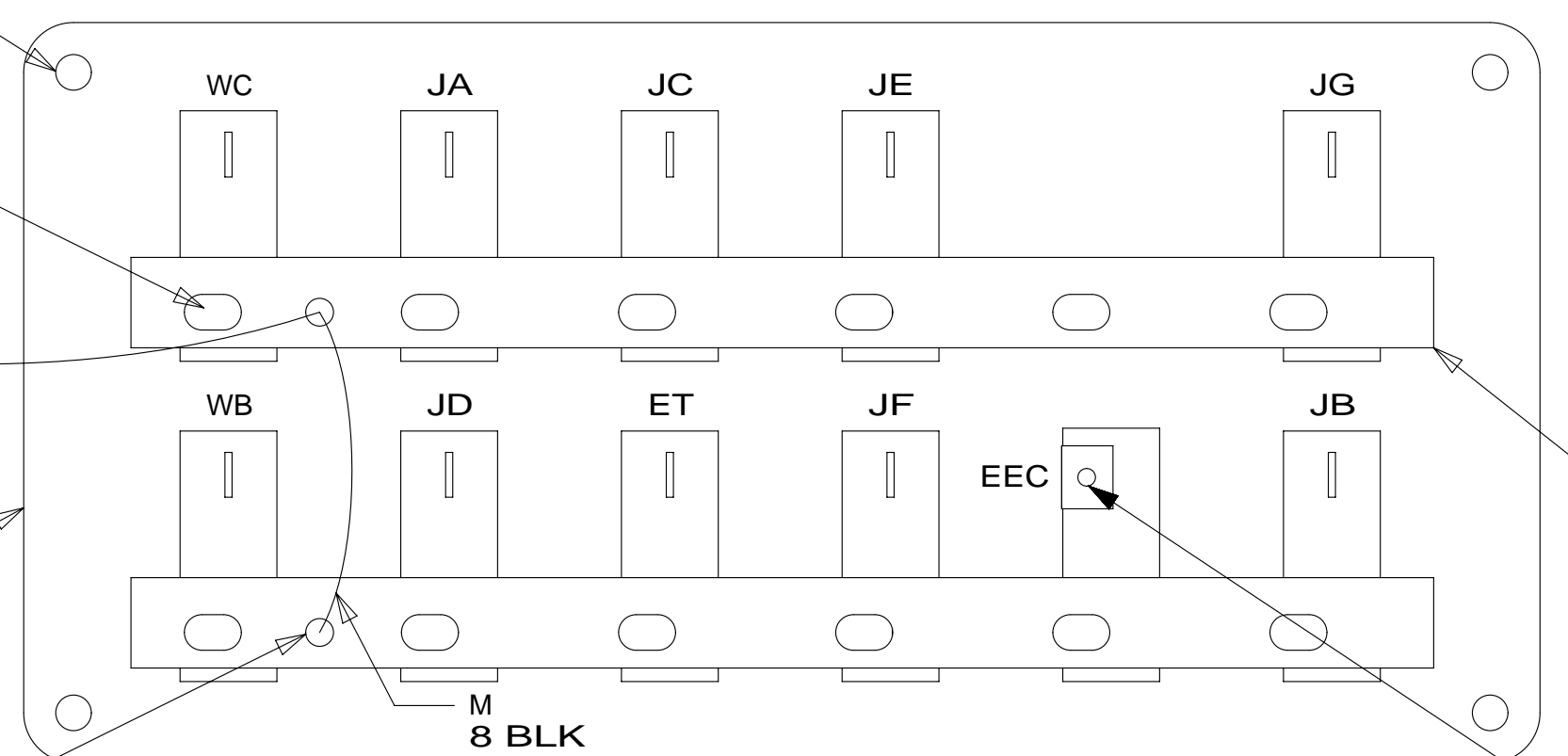
SCREW
G11-10-12U (4)

SCREW
G52-06-04B (12)

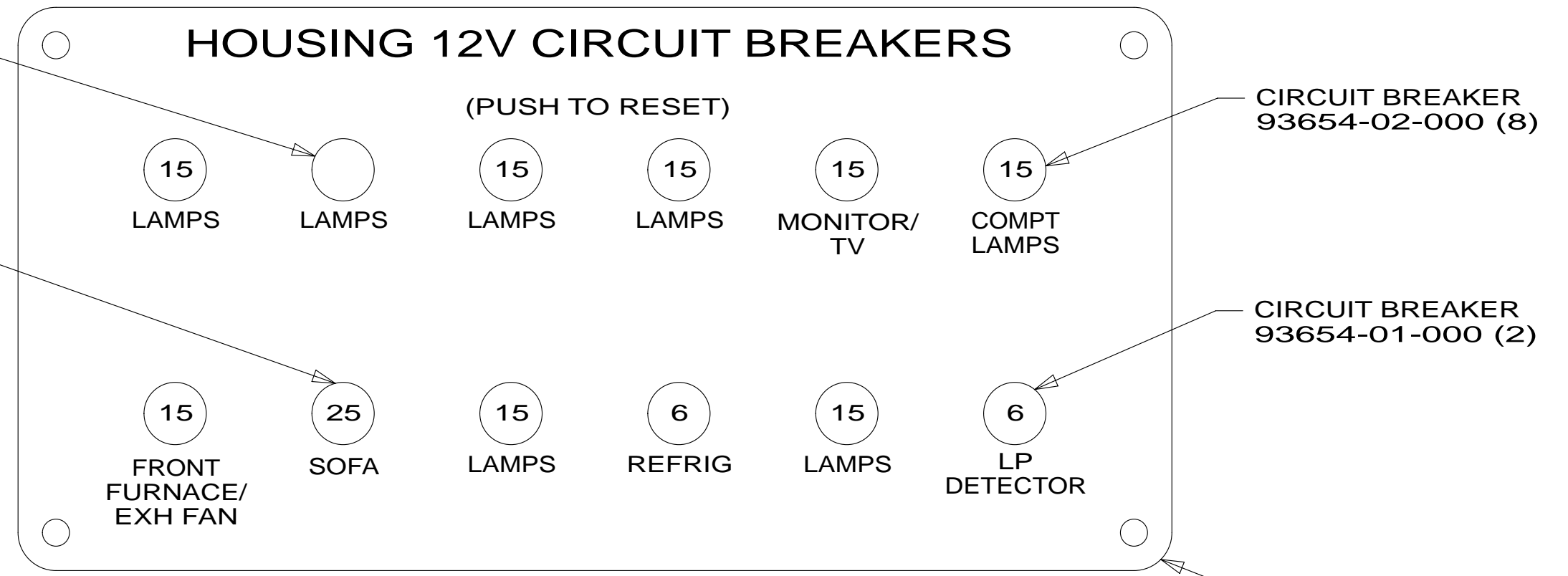
PLATE
93674-02-000

SCREW
G39-08-06B (2)

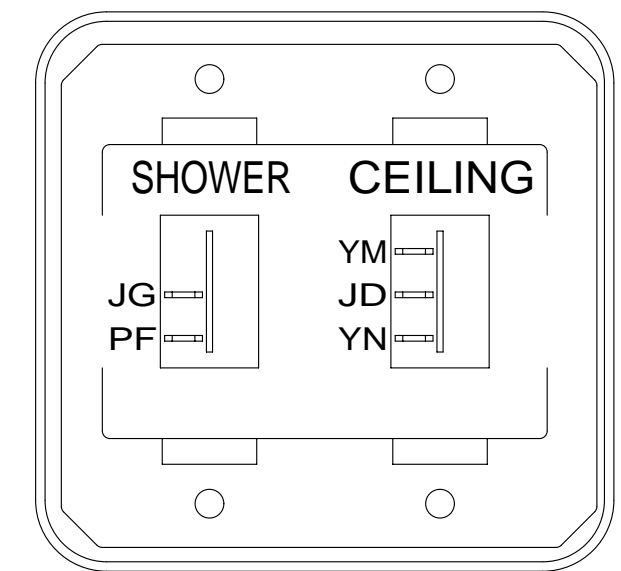
CIRCUIT BREAKER
93655-01-000
423 425



DETAIL DJ
(BACK VIEW)

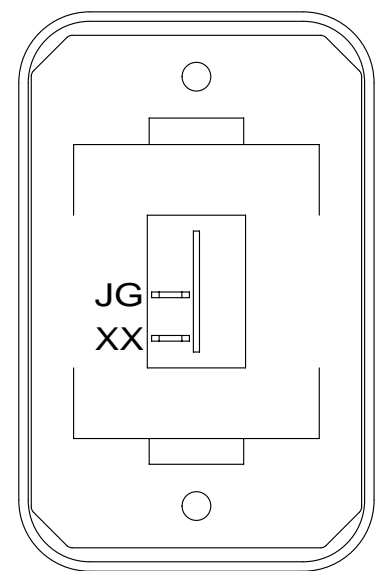


DETAIL DJ
(FRONT VIEW)



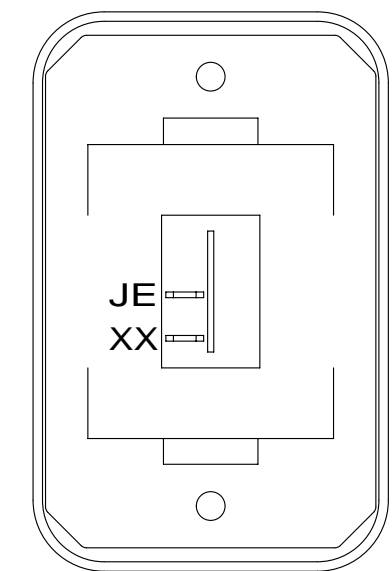
DETAIL DL

SWITCH-ROCKER
135740-01-CHT
SWITCH-BASE
135741-02-CHT
SWITCH-BEZEL
135742-15-CHT
SCREW
G11-08-08U (4)



DETAIL DM

SWITCH-ROCKER
135740-01-CHT
SWITCH-BASE
135741-01-CHT
SWITCH-BEZEL
135742-01-CHT
SCREW
G11-08-08U (2)



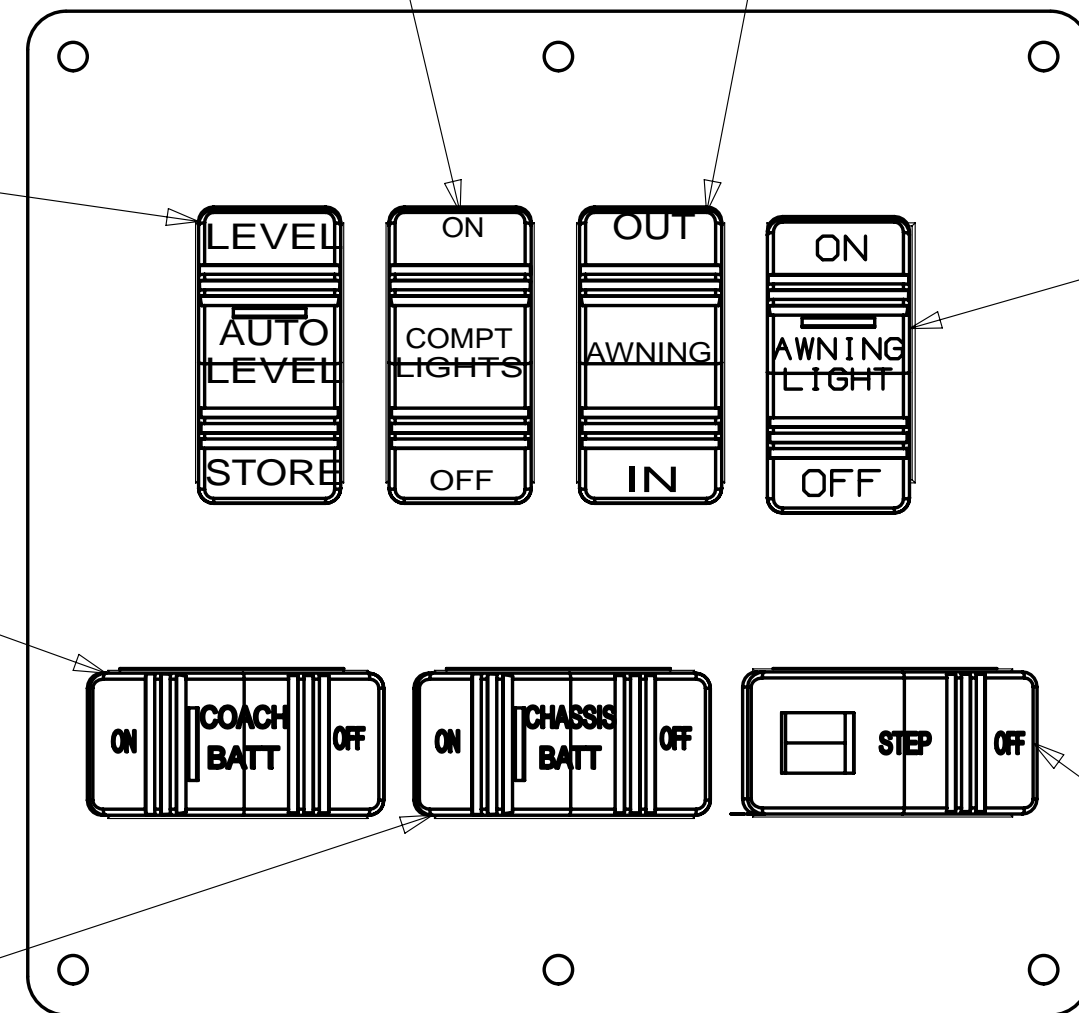
DETAIL DP

SWITCH-ROCKER
135740-01-CHT
SWITCH-BASE
135741-01-CHT
SWITCH-BEZEL
135742-01-CHT
SCREW
G11-08-08U (2)

SWITCH-AUTO LEVEL
108357-18-000
ACTUATOR-SWITCH
108356-15-CHT
CIRCUITS SSC,SSD,
SSE,SSF,SSE.

SWITCH-COACH BATT
108357-18-000
ACTUATOR-SWITCH
108356-19-CHT
CIRCUITS KF,LG,LJ
,LJ,LH,KF,KF,LK
WIRE ASM-THERM
186796-01-000

SWITCH-CHASSIS BATTERY
108357-18-000
ACTUATOR-SWITCH
108356-20-CHT
CIRCUITS UUC,TTY,UUB
UUB,TTZ,UUC,UUC,UUA
WIRE ASM-THERM
186796-01-000



DETAIL DH

SWITCH-AWNING LIGHT
108357-14-000
ACTUATOR-SWITCH
108356-28-CHT
CIRCUITS
WC,WE,ZZK

PLATE-SWITCH
158431-27-CHT
SCREW
G11-06-10U (6)

SWITCH-STEP
108357-19-000
CIRCUITS ER,ES

FOR ELECTRICAL
TORQUE
SPECIFICATIONS
SEE DWG NO.
128783-01-000

FOR ELECTRICAL
CALLOUTS
SEE DWG NO.
121339-01-000

- 423 RESTEASY-SECTION-UL LTR DUAL
- 425 RESTEASY-SECTIONAL-ULTRALEAT
- 265 CODES/STANDARDS-CSA/CMVSS
- 1B1 CODES/STANDARDS USA

1B1	265
FIRST USED	
14 D36V	
DO NOT SCALE DRAWING	
TITLE: WIRING INSTL-BODY,12V	
SHEET 4	PART NO 186745 REV

NOTES:
1 FOR SWITCH ORIENTATION SEE DETAIL DE

* 186745 * A

8

7

6

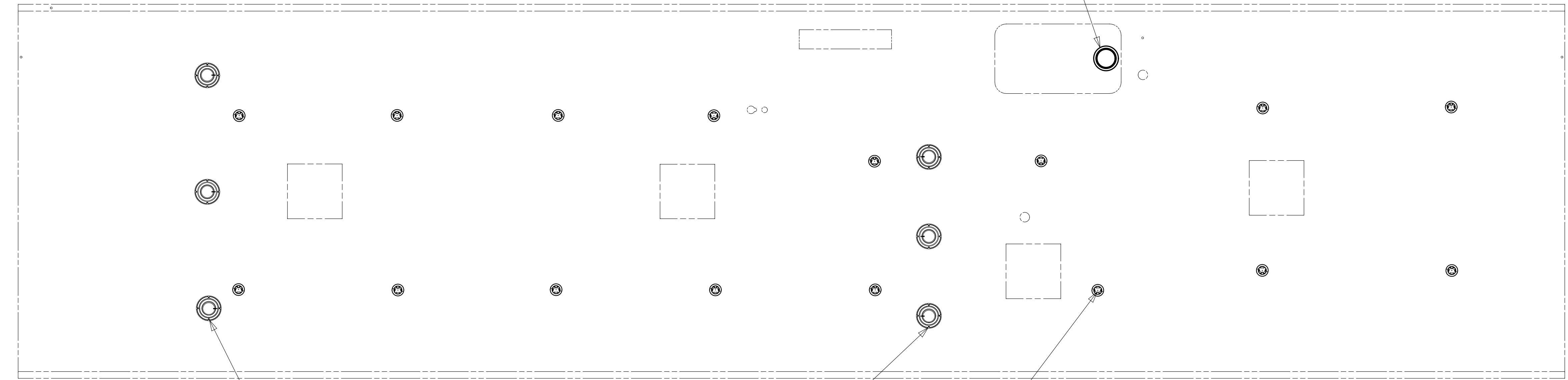
5

4

3

2

1



SPEAKER-ROUND,CEILING (42K)
160867-01-CHT (3)
SCREW
000G12-08-12U (12) (1JM)

68L SPEAKER-ROUND,CEILING
160867-01-CHT (3)
SCREW
000G12-08-12U (12) (1JM)

WASHER-PLASTIC
180671-02-CHT

1

- (42K) TV-32" COLOR,STEREO W/REMOTE
- (68L) TV-42" COLOR,STEREO W/REMOTE
- (265) CODES/STANDARDS-CSA/CMVSS
- (1B1) CODES/STANDARDS USA

(1B1) (265)

FIRST USED	14 D36V	
DO NOT SCALE DRAWING		
TITLE: WIRING INSTL-BODY,12V		
SHEET 5	PART NO 186745	REV

FOR ELECTRICAL TORQUE SPECIFICATIONS SEE DWG NO. 128783-01-000

FOR ELECTRICAL CALLOUTS SEE DWG NO. 121339-01-000

NOTES:
1 REMOVE BULB SUPPLIED WITH LAMP,SEND BULB TO STOCK AS PART NUMBER 117805-02-000, REPLACE WITH LED BULB.

8

7

6

5

4

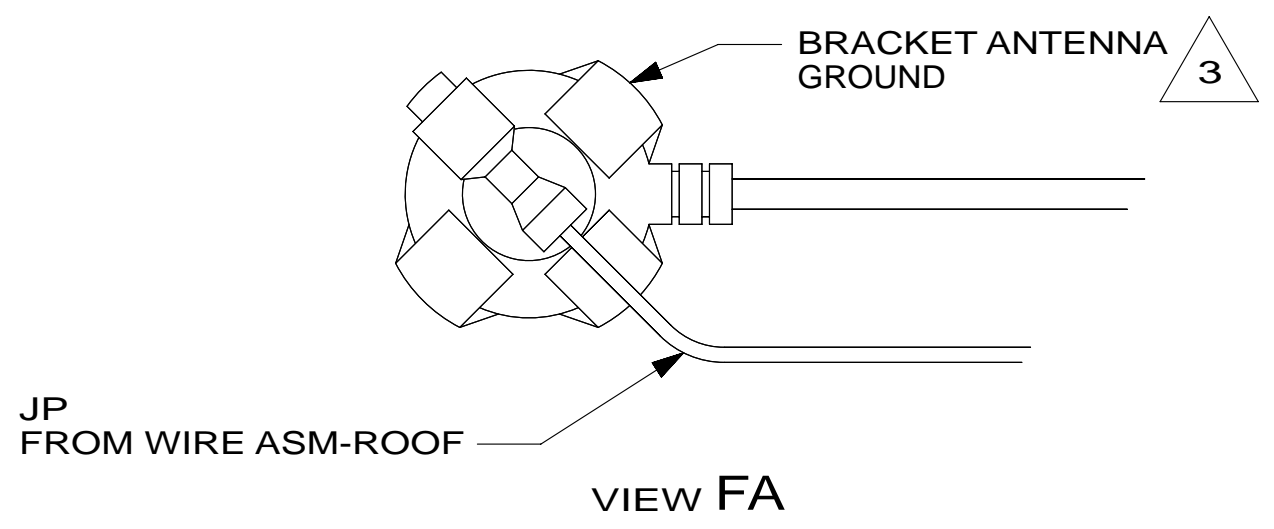
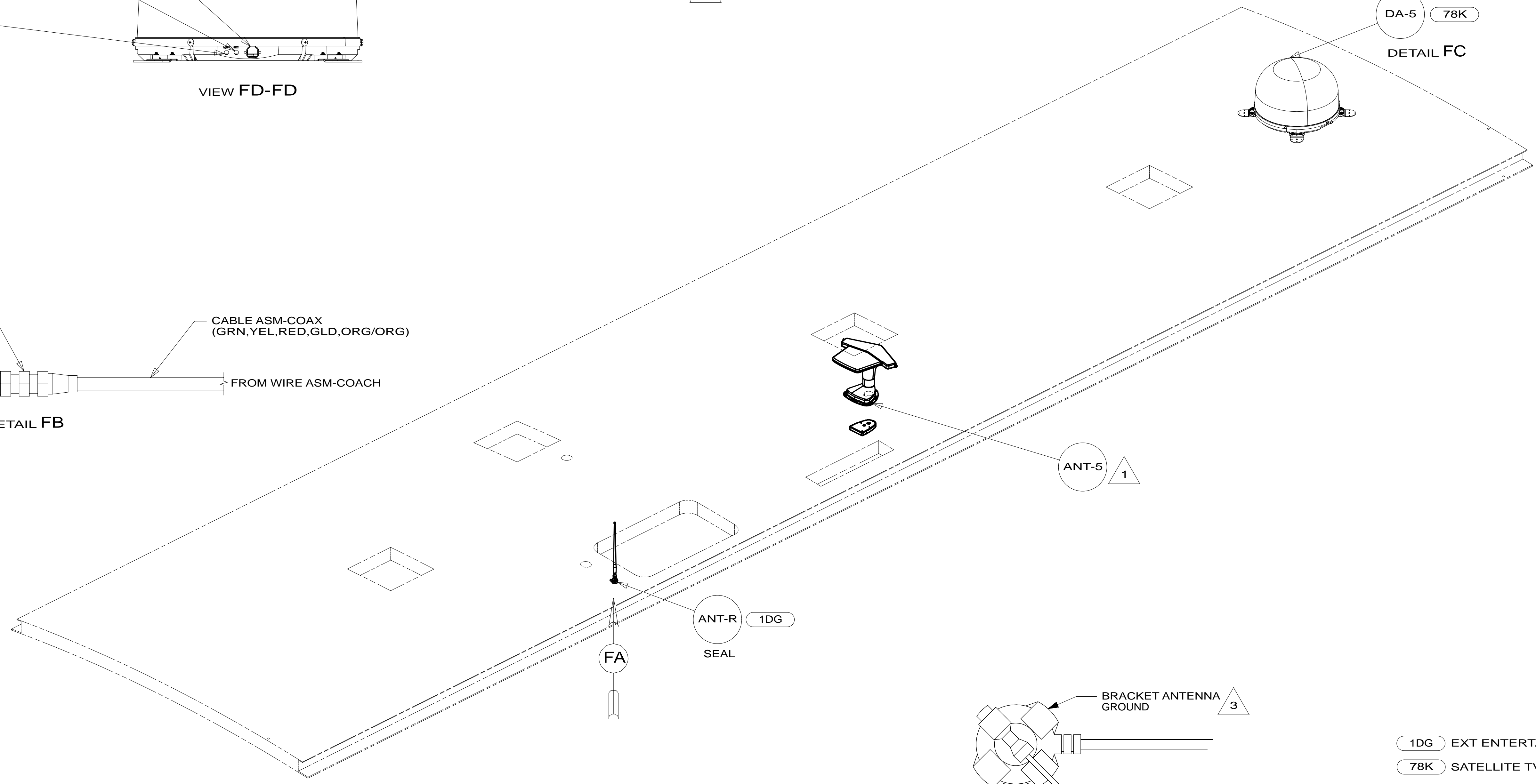
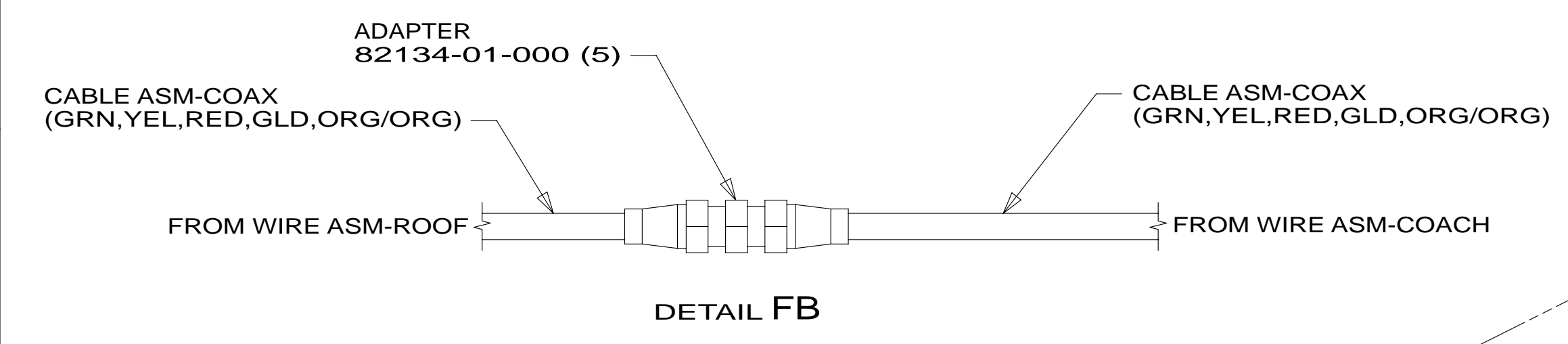
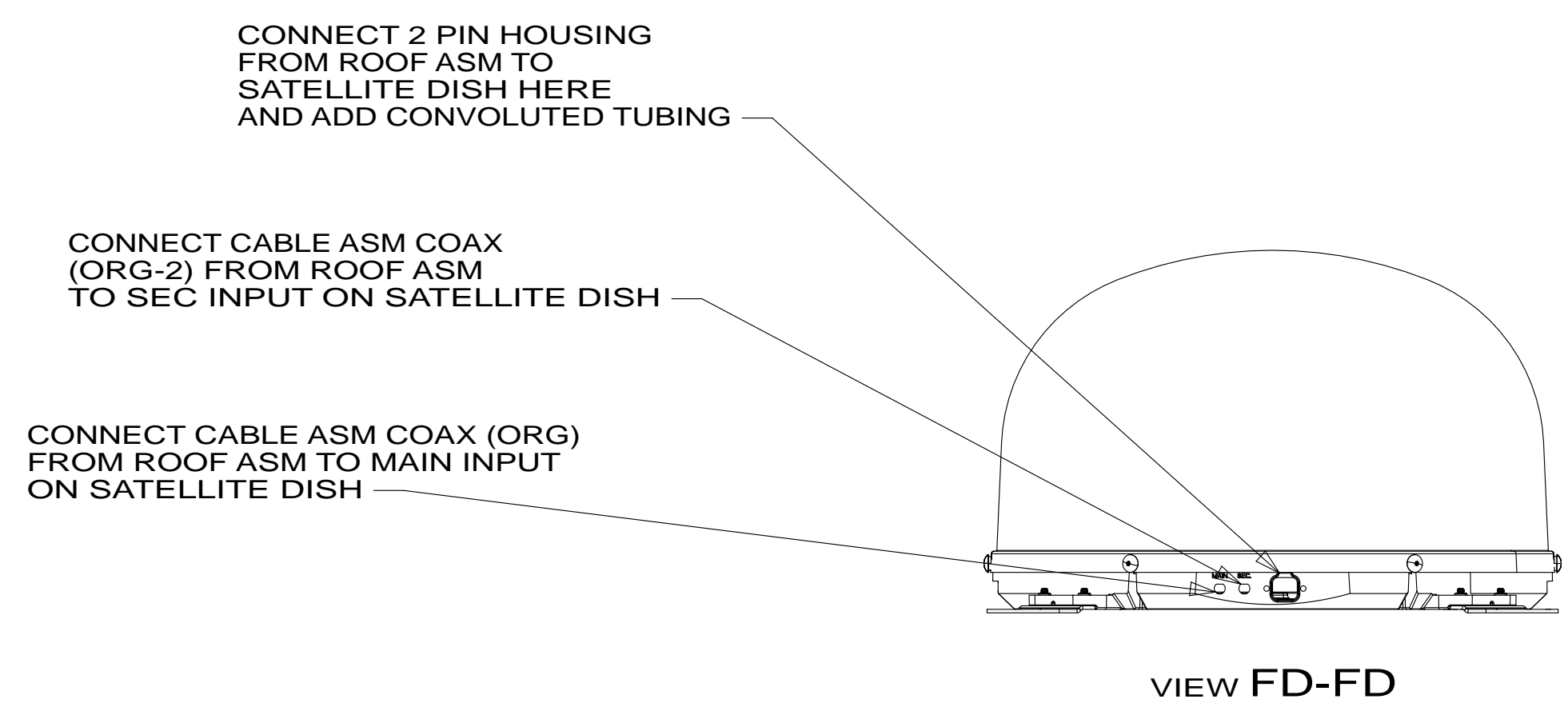
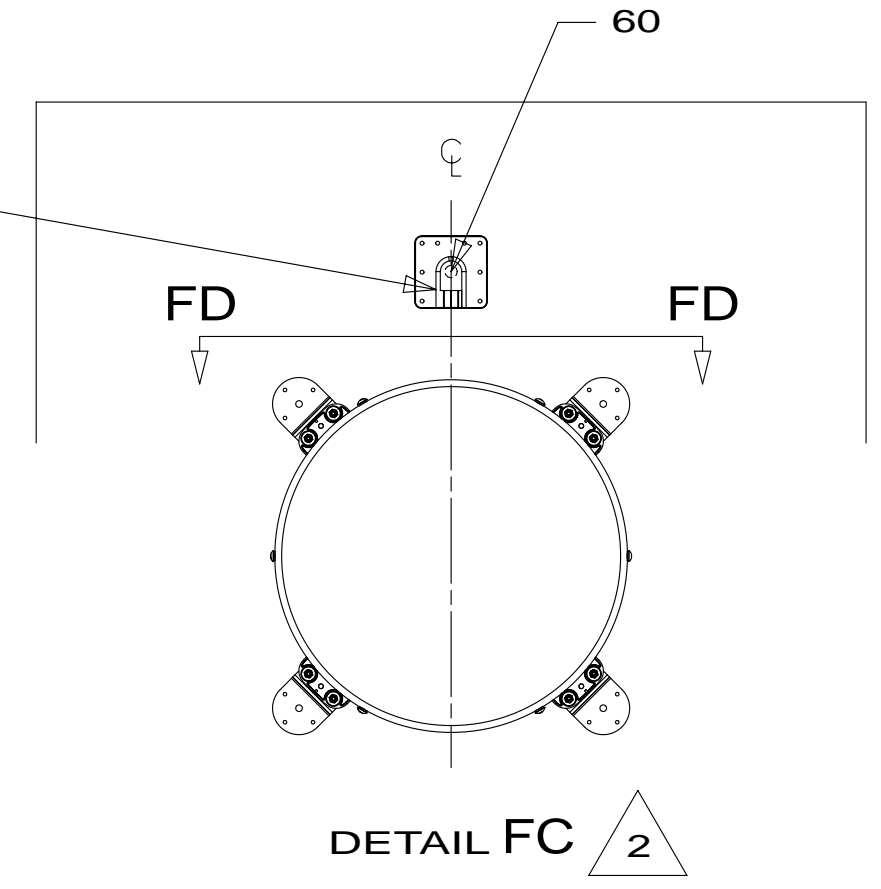
3

2

1

* 186745 * A

THE SATELLITE WIRE CONNECTIONS ARE TO BE PLACED IN THE CENTERLINE OF THE MOTORHOME FACING FORWARD



- NOTES:
- 3 WRAP LEGS AROUND ANTENNA BASE.
 - 2 SEE MANUFACTURER'S INSTALLATION FOR ADDITIONAL INFORMATION.
 - 1 SEE ANTENNA INSTALLATION MANUAL FOR CORRECT INSTALLATION PROCEDURE.

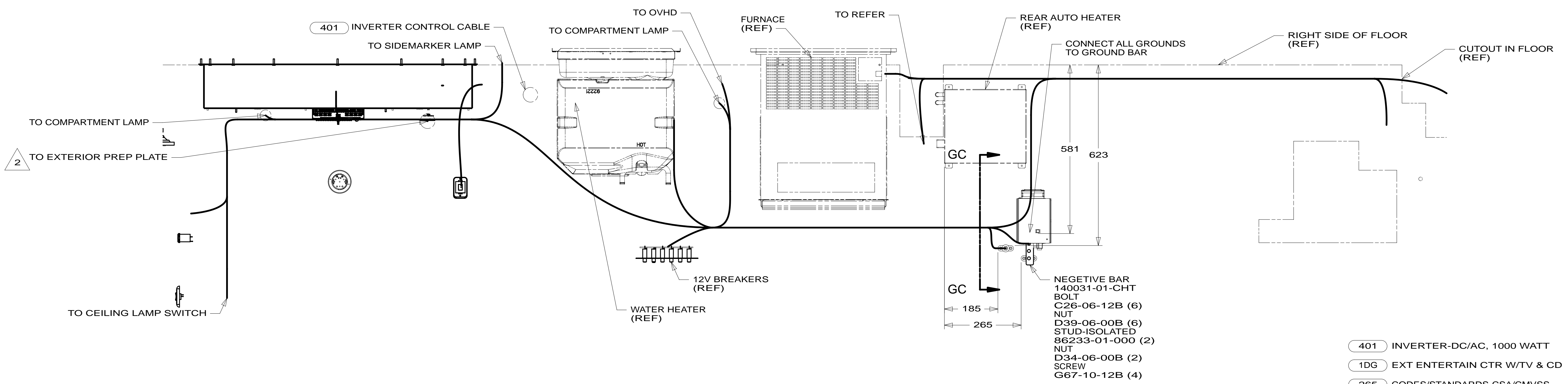
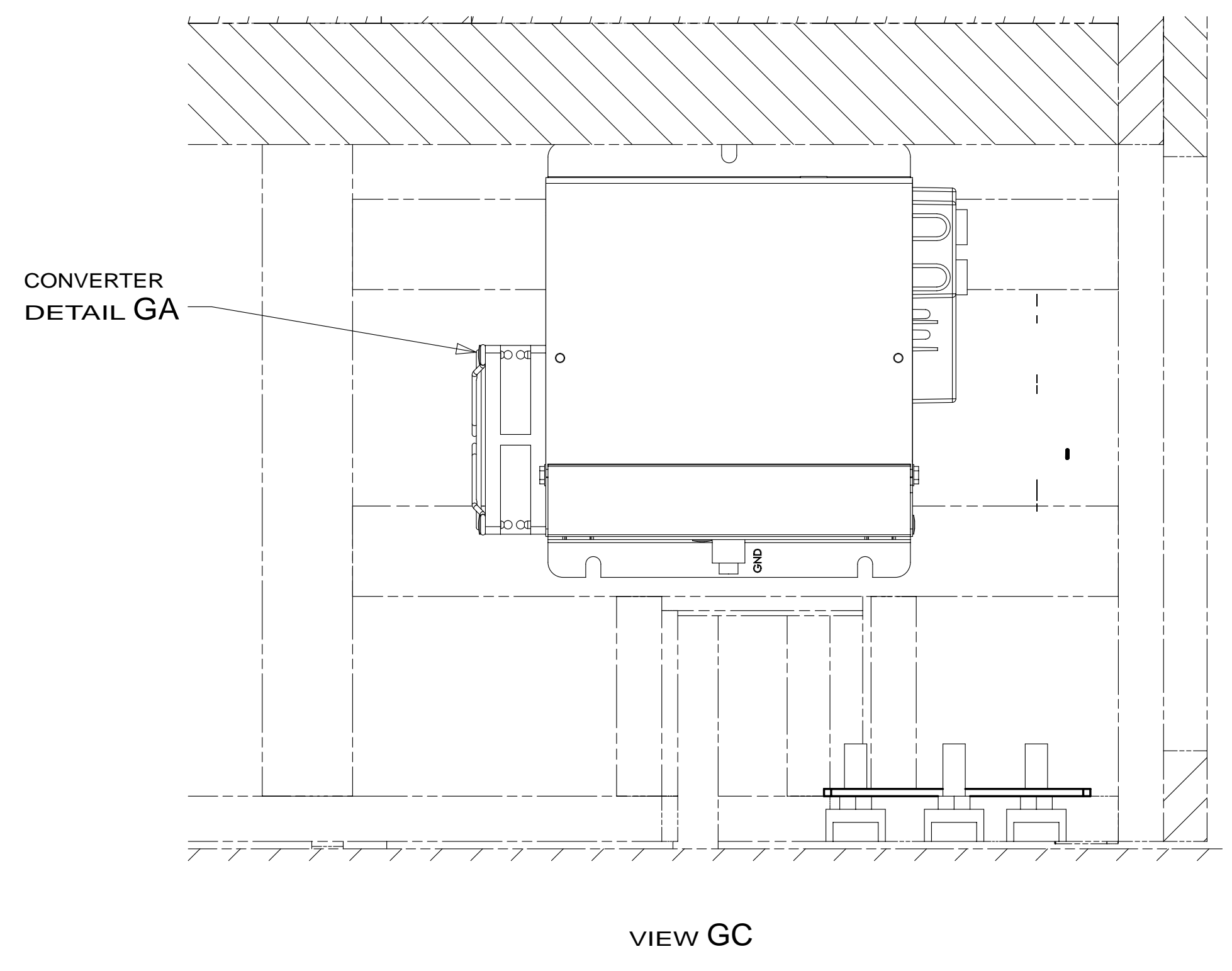
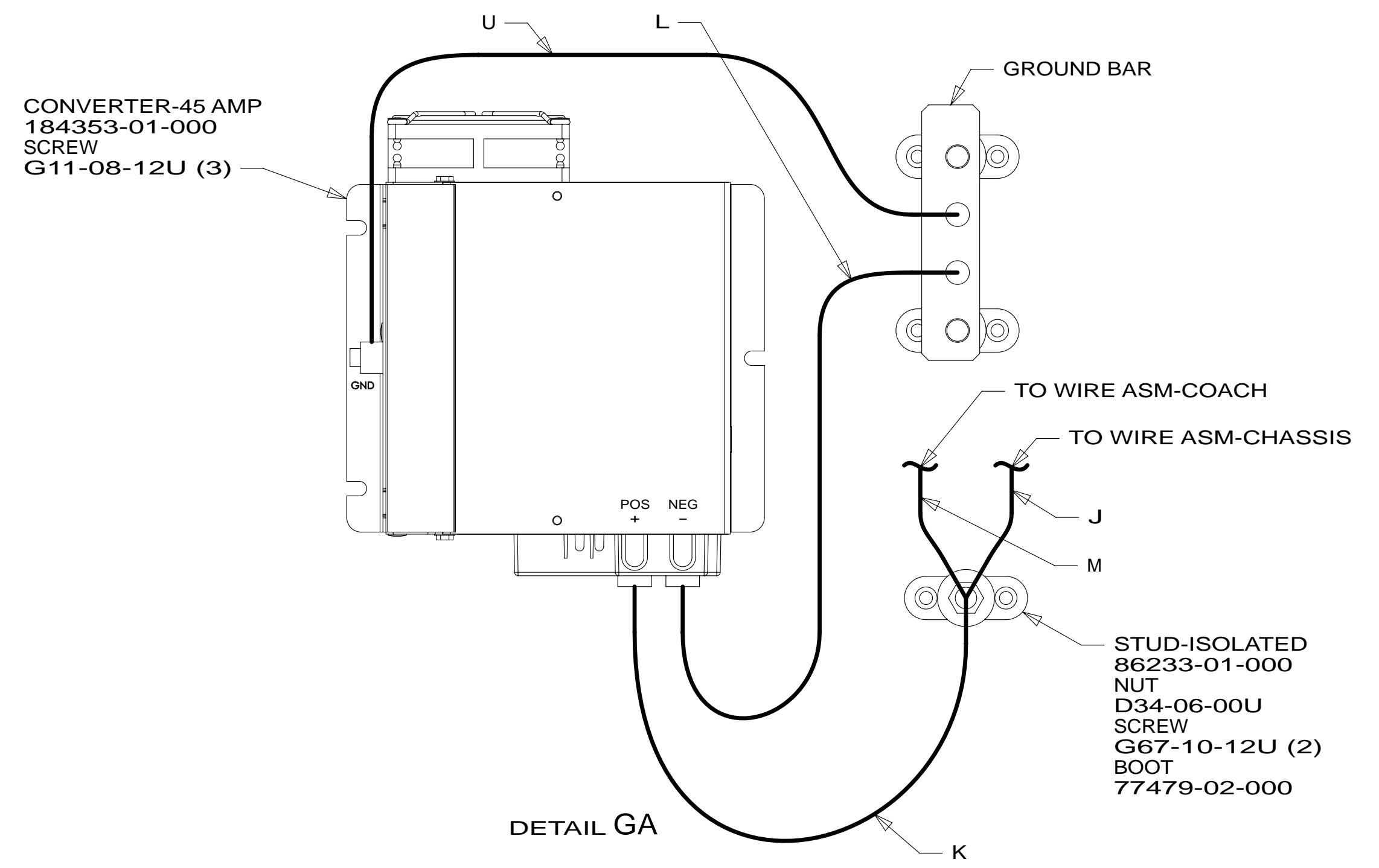
- 1DG EXT ENTERTAIN CTR W/TV & CD
- 78K SATELLITE TV SYSTEM AUTO
- 265 CODES/STANDARDS-CSA/CMVSS
- 1B1 CODES/STANDARDS USA

FOR ELECTRICAL TORQUE SPECIFICATIONS SEE DWG NO. 128783-01-000

FOR ELECTRICAL CALLOUTS SEE DWG NO. 121339-01-000

FIRST USED		14 D36V	
DO NOT SCALE DRAWING			
TITLE: WIRING INSTL-BODY,12V			
SHEET 6	PART NO	186745	REV
		1	02-Jan-2014

* 186745 * A



- NOTES:
- 2 WITHOUT 1DG
 - 1 USE WIRE TIE 8343-02-000 AND SECURE WIRE HARNESS TO WIRE TRAYS.

- 401 INVERTER-DC/AC, 1000 WATT
- 1DG EXT ENTERTAIN CTR W/TV & CD
- 265 CODES/STANDARDS-CSA/CMVSS
- 1B1 CODES/STANDARDS USA

1B1	265
FIRST USED	
14 D36V	
DO NOT SCALE DRAWING	
WIRING INSTL-BODY, 12V	
SHEET 7	PART NO 186745 REV

FOR ELECTRICAL TORQUE SPECIFICATIONS SEE DWG NO. 128783-01-000

FOR ELECTRICAL CALLOUTS SEE DWG NO. 121339-01-000

* 186745 * A