



**DANGER**

**Danger of electrical shock, burns or death.** Always remove all power sources before attempting any repair, service or diagnostic work. Power can be present from shore power, generator, inverter or battery. All power sources must be disabled and secured before performing any service.

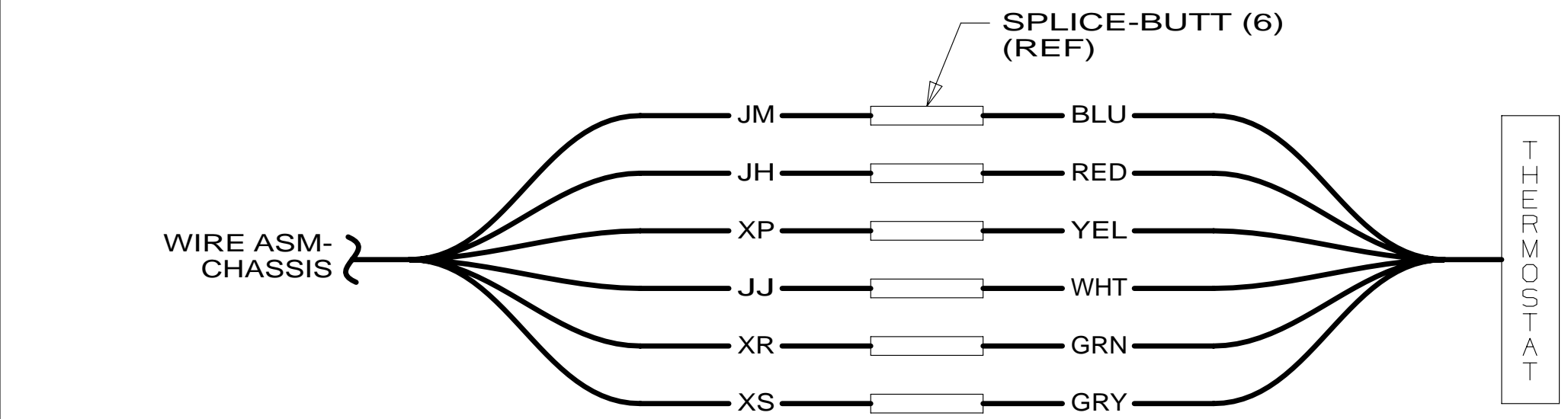


**CAUTION**

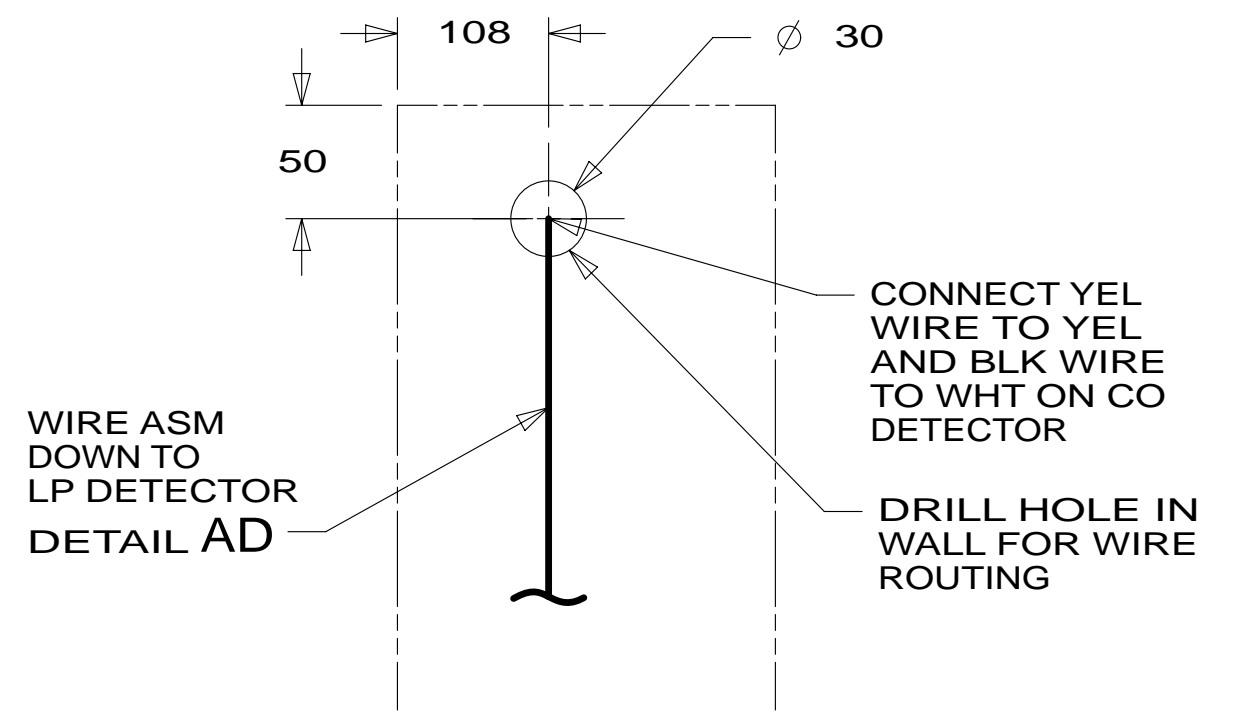
If you lack the skills, tools or equipment to perform diagnostic or repair work leave such work to an authorized Winnebago Industries dealer or other qualified shop.

DRAWING NO.	MODEL
186680-01	327Q
186680-02	327QP

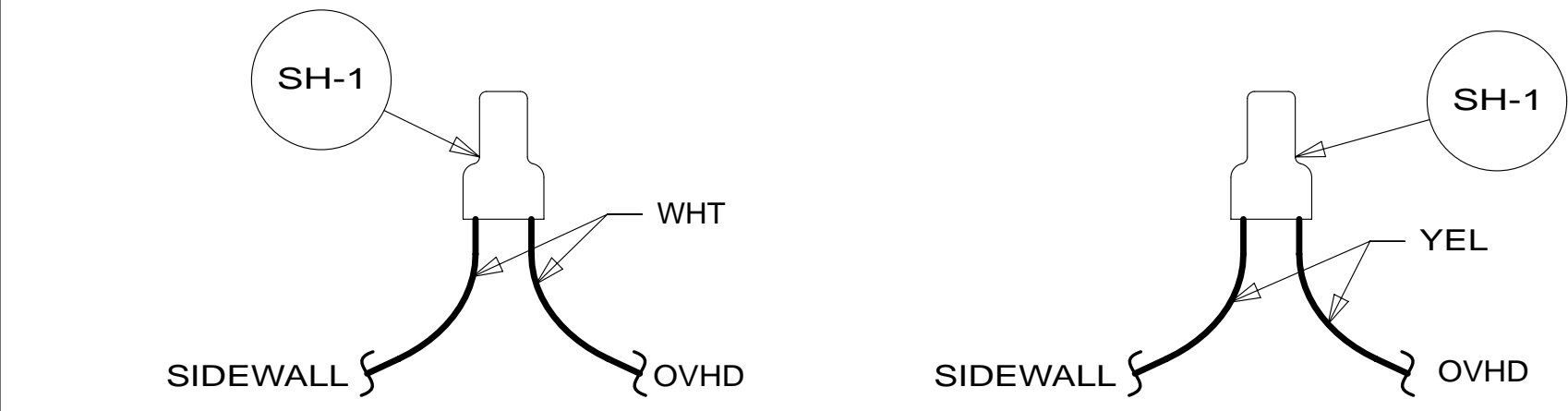
RELEASE	REV/DATE	DWG NO	186680
REV ZONE	REVISION RECORD	DATE	DTR-ORIG



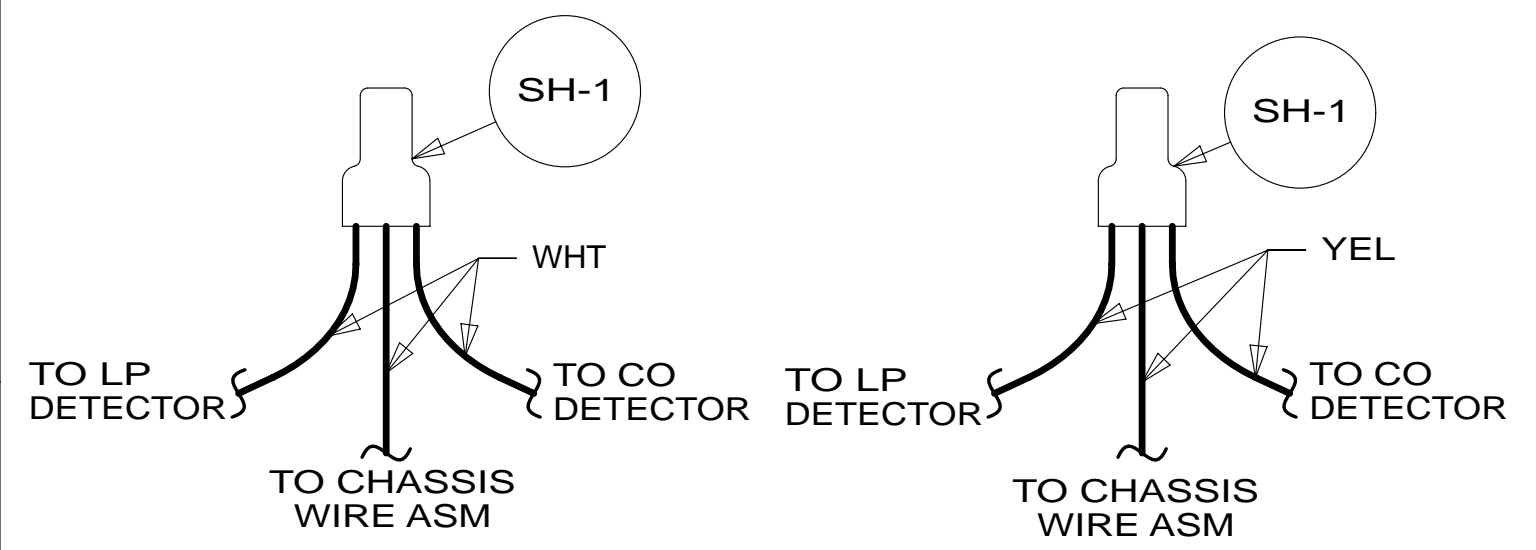
DETAIL AA



DETAIL AC 644

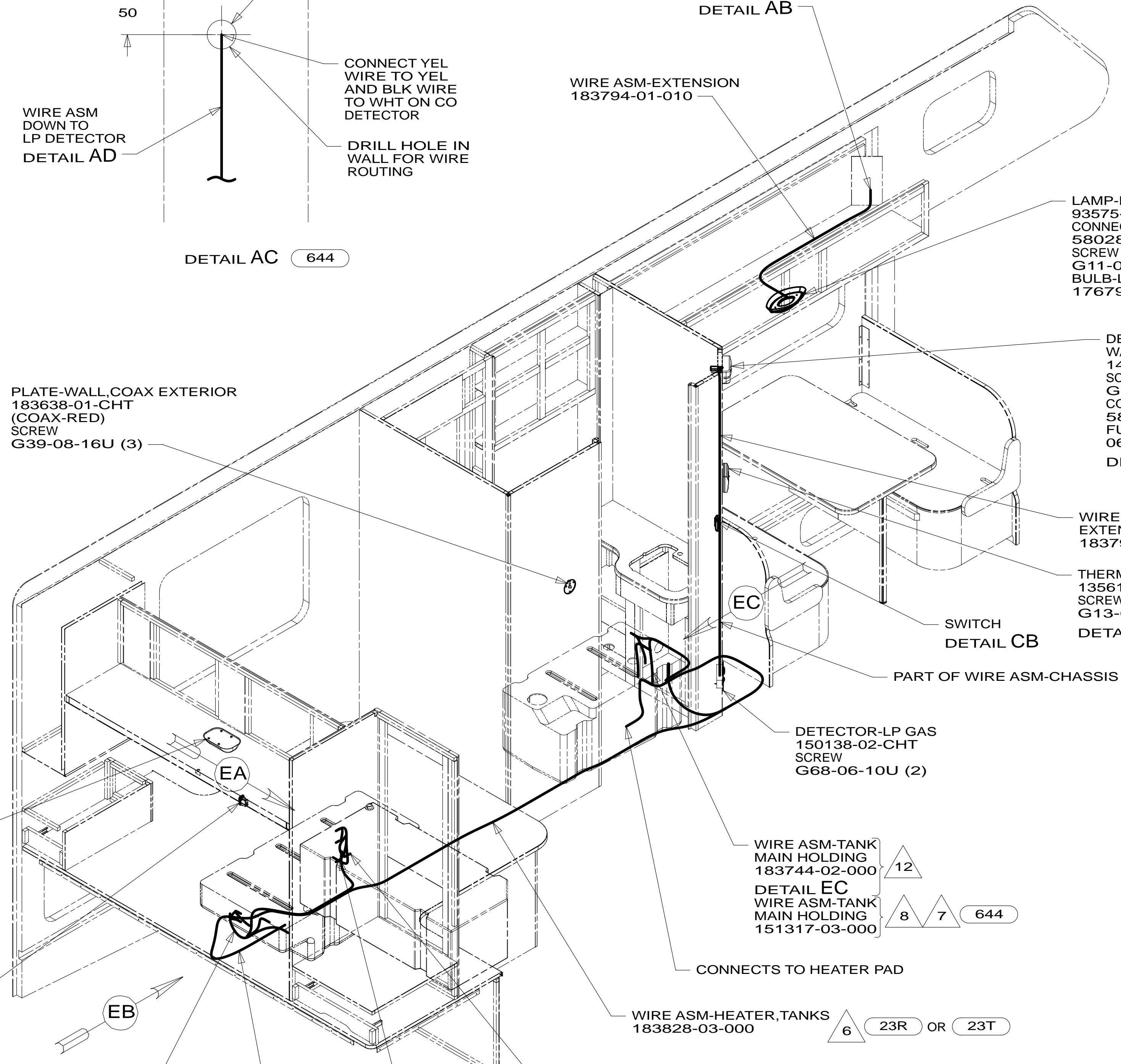


DETAIL AB

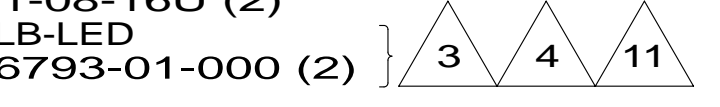


DETAIL AD 644

PLATE-WALL, COAX EXTERIOR  
183638-01-CHT  
(COAX-RED)  
SCREW  
G39-08-16U (3)



LAMP-DINETTE  
93575-48-CHT  
CONNECTOR  
58028-01-000 (2)  
SCREW  
G11-08-16U (2)  
BULB-LED  
176793-01-000 (2)



DETECTOR-CO GAS  
W/FUSE HSG  
146126-04-CHT  
SCREW  
G12-08-16U (2)  
CONNECTOR  
58028-01-000 (2)  
FUSE-1 AMP  
062901-09-000  
DETAIL AC

644

WIRE ASM-EXTENSION  
183794-01-020

644

THERMOSTAT  
135618-06-CHT  
SCREW  
G13-07-12B (2)  
DETAIL AA

DETAIL AB

DETECTOR-LP GAS  
150138-02-CHT  
SCREW  
G68-06-10U (2)

WIRE ASM-TANK  
MAIN HOLDING  
183744-02-000

DETAIL EC  
WIRE ASM-TANK  
MAIN HOLDING  
151317-03-000

12

8 7 644

WIRE ASM-HEATER, TANKS  
183828-03-000

6

23R OR 23T

WIRE ASM-WATER TANK  
183744-01-000  
DETAIL EA  
WIRE ASM-WATER TANK  
151317-02-000

12

9 7 644

TWO PIN HSG  
TO WATER PUMP  
(PART OF WIRE  
ASM-CHASSIS)

5

TO MACERATOR  
(DRAIN PUMP)  
CIRCUITS DA, JN  
(PART OF WIRE  
ASM-CHASSIS)

2 LSS-2

11 3 CLED-2

WIRE ASM-TANK  
AUX HOLDING  
183744-03-000  
DETAIL EB  
WIRE ASM-TANK  
AUX HOLDING  
151317-05-000

644

7

10

12 NOT USED WITH 644

11 USED WITH 644

10 MARK WIRES WITH WRAP OF ORG TAPE.

9 MARK WIRES WITH WRAP OF RED TAPE.

8 MARK WIRES WITH WRAP OF BLU TAPE.

7 CUT 2-PIN HSG OFF ASSEMBLY, REPLACE WITH BUTT SPLICE 031876-01-000 (2). CONNECT BLK WIRE TO WHT AND BLK/WHT WIRE TO YEL

6 WIRE ROUTED ALONG WITH DRAINAGE PIPE AND ATTACHED TO PIPE WITH TIE-WIRE 8343-04-000.

5 COVER BUTT SPLICES FROM CHASSIS LOOM TO MACERATOR PUMP WITH HEAT SHRINK 007956-09-000 (2).

4 REMOVE BULB SUPPLIED WITH LAMP, SEND TO STOCK AS PART NUMBER 117805-02-000. REPLACE WITH LED BULB

3 USED WITH 327QP.

2 USED WITH 327Q.

1. AT MINIMUM ALL WIRES TO BE SUPPORTED AND SECURED PER CODE REQUIREMENTS. USE CLAMP 10495 OR 10497 OR WIRE TIE 8343 OR 108046 AND SCREW G67-XX-XXX OR G56-XX-XXX AS APPROPRIATE FOR INSTALLATION.

NOTES:

- 644 GREAT ALASKAN RENTAL PACKAGE
- 23R DRAINAGE SYSTEM/HEAT-PREWIRED
- 23T DRAINAGE SYSTEM-HEATED
- 265 CODES/STANDARDS-CSA/CMVSS
- 1B1 CODES/STANDARDS USA

1B1 265

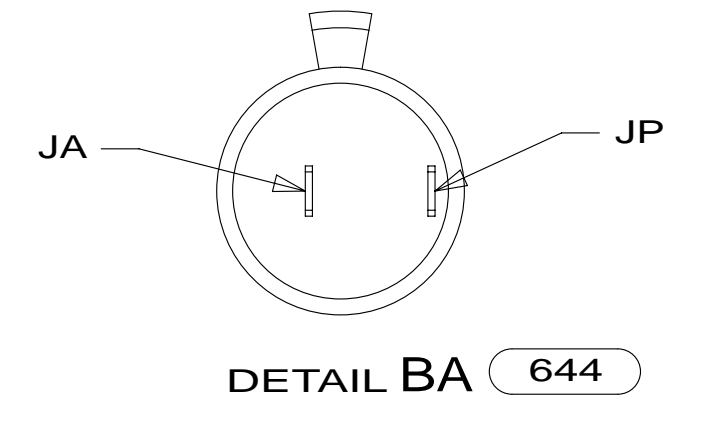
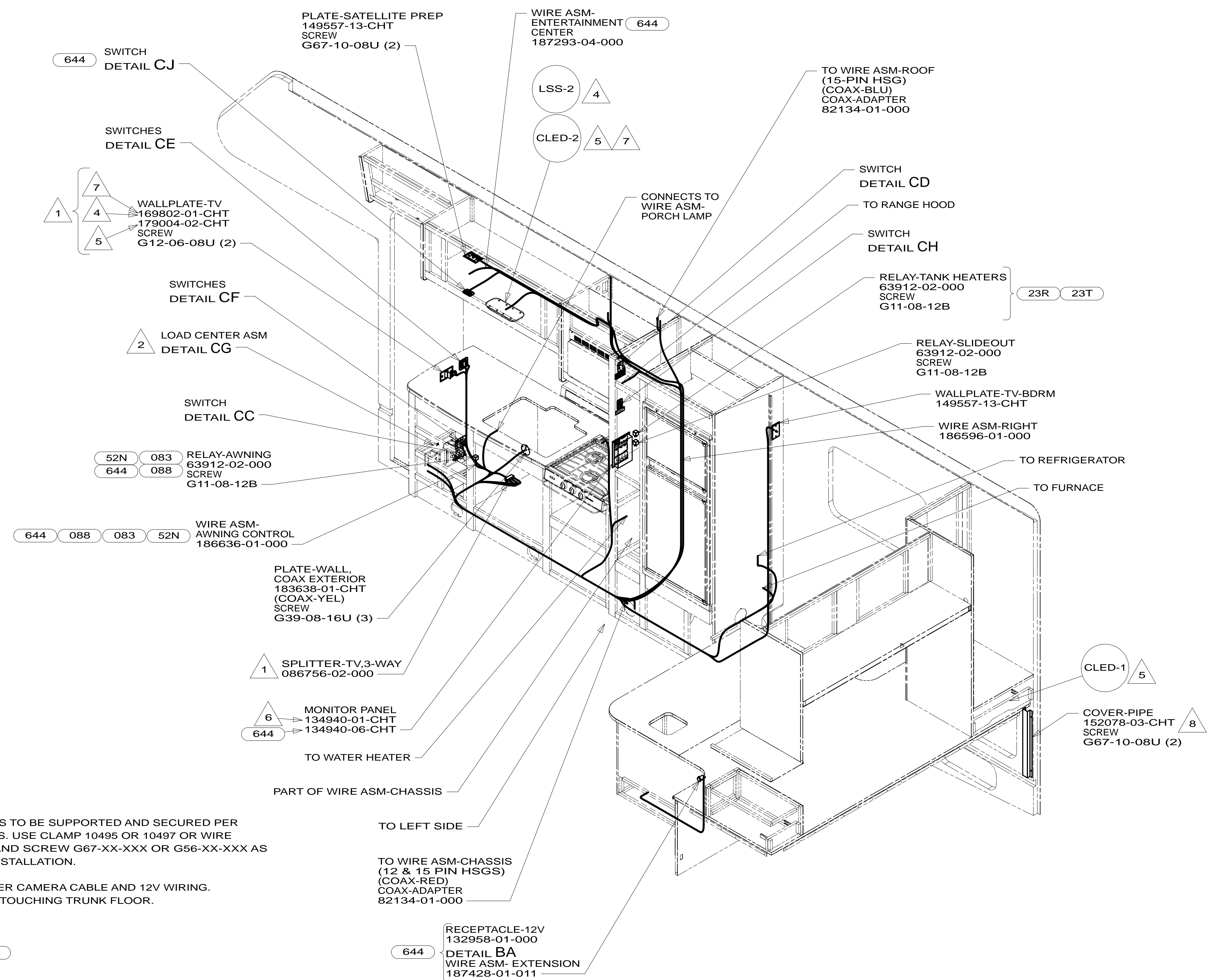
WINNEBAGO  
COPYRIGHT 2013  
WINNEBAGO  
INDUSTRIES, INC.

DTR	ORIG. DATE
CHKR	ALL DIMENSIONS ARE IN MILLIMETERS
P.E.	
M.E.	FIRST USED
DSNR	14 327Q/P
UNSPECIFIED TOLERANCES ARE:	
WHOLE DIM (X)	: 3
ONE-PLACE (X.X)	: 1.5
TWO-PLACE (X.XX)	: 0.50
ANGLE	: 1°
THIRD ANGLE PROJECTION	
DO NOT SCALE DRAWING REFER TO ES0018 FOR FASTENER TIGHTENING GUIDELINES	
TITLE: WIRING INSTL-BODY, 12V	
SHEET 1 OF 5	PART NO 186680 REV

FOR ELECTRICAL TORQUE SPECIFICATIONS SEE DWG NO. 128783-01-000

FOR ELECTRICAL CALLOUTS SEE DWG NO. 121339-01-000

\* 186680



9. AT MINIMUM ALL WIRES TO BE SUPPORTED AND SECURED PER CODE REQUIREMENTS. USE CLAMP 10495 OR 10497 OR WIRE TIE 8343 OR 108046 AND SCREW G67-XX-XXX OR G56-XX-XXX AS APPROPRIATE FOR INSTALLATION.
- 8 COVER USED TO COVER CAMERA CABLE AND 12V WIRING. INSTALL WITH COVER TOUCHING TRUNK FLOOR.
  - 7 USED WITH 644
  - 6 NOT USED WITH 644
  - 5 USED WITH 327QP.
  - 4 USED WITH 327Q.
  - 3 SEE DRAINAGE SYSTEM INSTALLATION FOR ADDITIONAL INFORMATION.
  - 2 SEE LOAD CENTER/ATS ASM FOR ADDITIONAL INFORMATION.
  - 1 SEE WIRING INSTL-TV/DVD FOR ADDITIONAL INFORMATION.

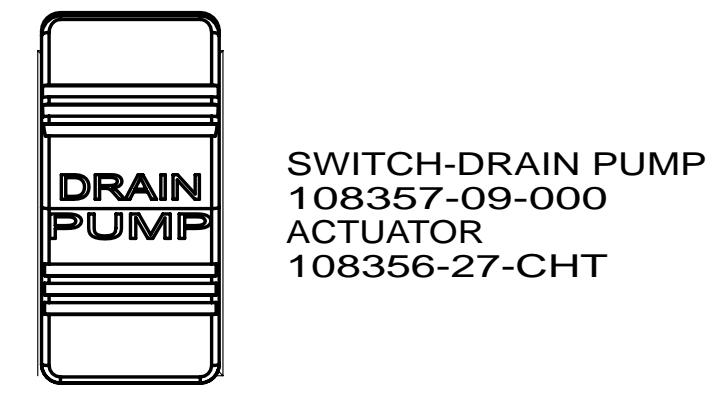
- 644 GREAT ALASKAN RENTAL PACKAGE
- 52N AWNING - PATIO,ELECTRIC
- 088 CONVNIENCE & APPEAR PK-TAUP
- 083 CONVNIENCE & APPEAR PK-WHITE
- 23T DRAINAGE SYSTEM - HEATED
- 23R DRAINAGE SYSTEM/HEAT - PREP
- 265 CODES/STANDARDS-CSA/CMVSS
- 1B1 CODES/STANDARDS USA

FOR ELECTRICAL TORQUE SPECIFICATIONS SEE DWG NO. 128783-01-000

FOR ELECTRICAL CALLOUTS SEE DWG NO. 121339-01-000

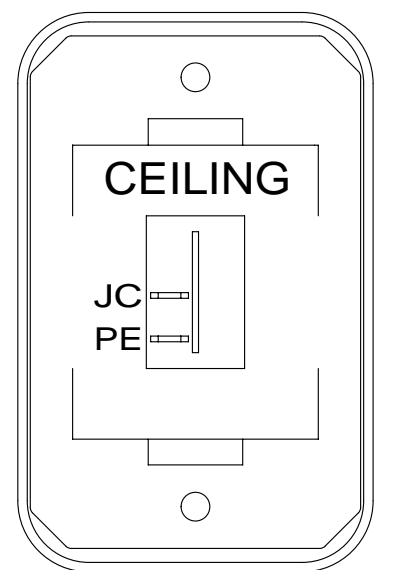
FIRST USED	14 327Q/P	
TITLE:	DO NOT SCALE DRAWING	
SHEET 2	PART NO	186680
	REV	

\* 186680



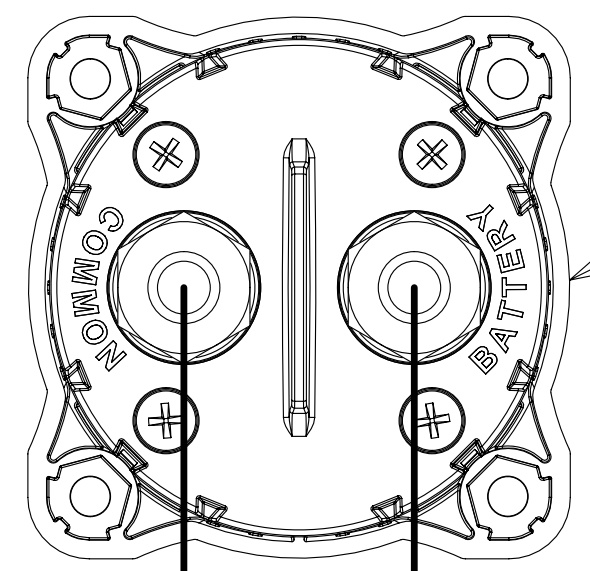
DETAIL CA

SWITCH-DRAIN PUMP  
108357-09-000  
ACTUATOR  
108356-27-CHT



DETAIL CB

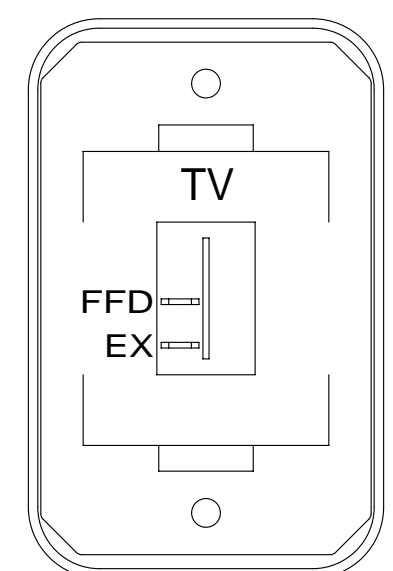
SWITCH-ROCKER  
135740-01-CHT  
SWITCH-BASE  
135741-01-CHT  
SWITCH-BEZEL  
135742-07-CHT  
SCREW  
G11-08-08U (2)



DETAIL CC

CABLE ASM-BLUE  
CABLE ASM-PURPLE

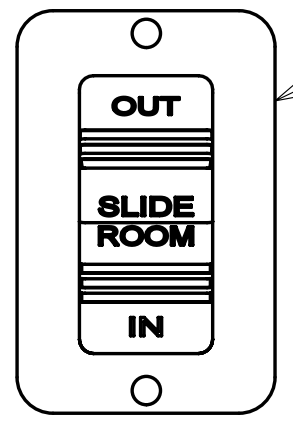
SWITCH-BATT DISC  
183904-01-000  
SCREW  
G67-10-12U (4)



DETAIL CJ

SWITCH-ROCKER  
135740-01-CHT  
SWITCH-BASE  
135741-01-CHT  
SWITCH-BEZEL  
135742-45-CHT  
SCREW  
G11-08-08U (2)

DRIVER'S SIDE FRONT



DETAIL CD

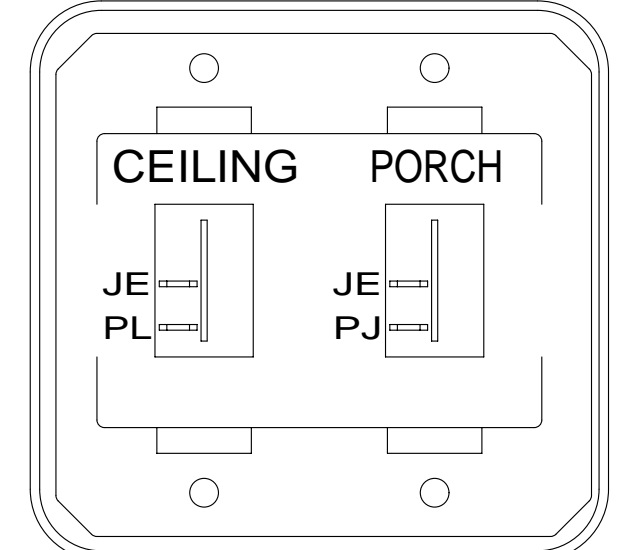
LABEL-SLIDEOUT, DRIVER, FRONT  
163992-01-CHT

PLATE-SWITCH  
144363-02-CHT  
SWITCH  
108357-06-000  
ACTUATOR  
108356-24-CHT  
SCREW  
G11-08-08U (2)



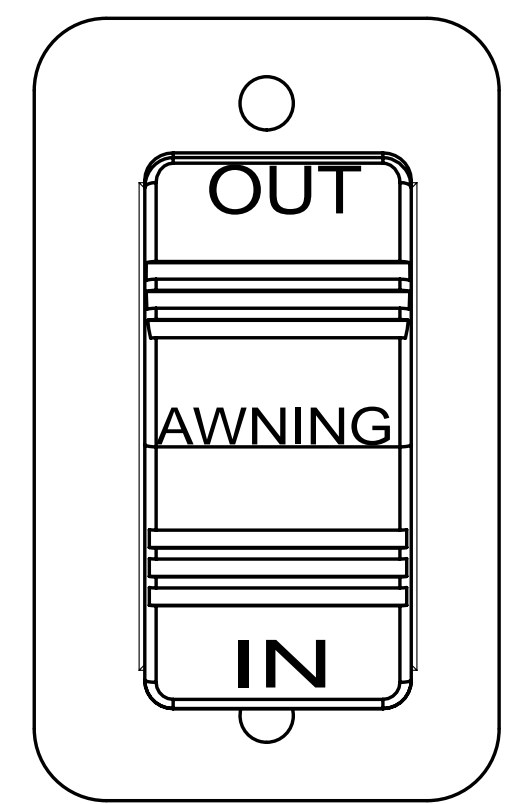
DETAIL CD

LABEL-WARNING, SLIDEOUT  
116549-02-000



DETAIL CE

SWITCH-ROCKER  
135740-01-CHT (2)  
SWITCH-BASE  
135741-02-CHT  
SWITCH-BEZEL  
135742-19-CHT  
SCREW  
G11-08-08U (4)

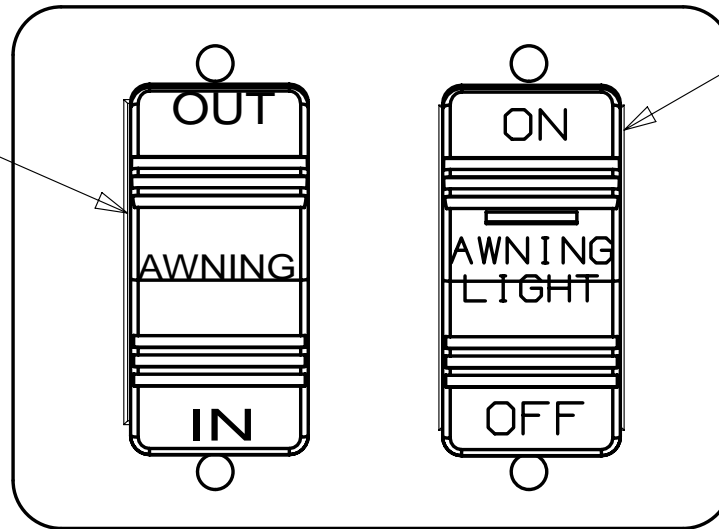


DETAIL CF

SWITCH-ROCKER  
108357-06-000  
ACTUATOR  
108356-12-CHT  
SWITCH-BLANK  
096241-03-000  
PLATE-SWITCH  
098351-07-CHT  
SCREW  
G11-06-10U (2)

083 088 644  
52F

SWITCH-AWNING  
108357-06-000  
ACTUATOR  
108356-12-CHT

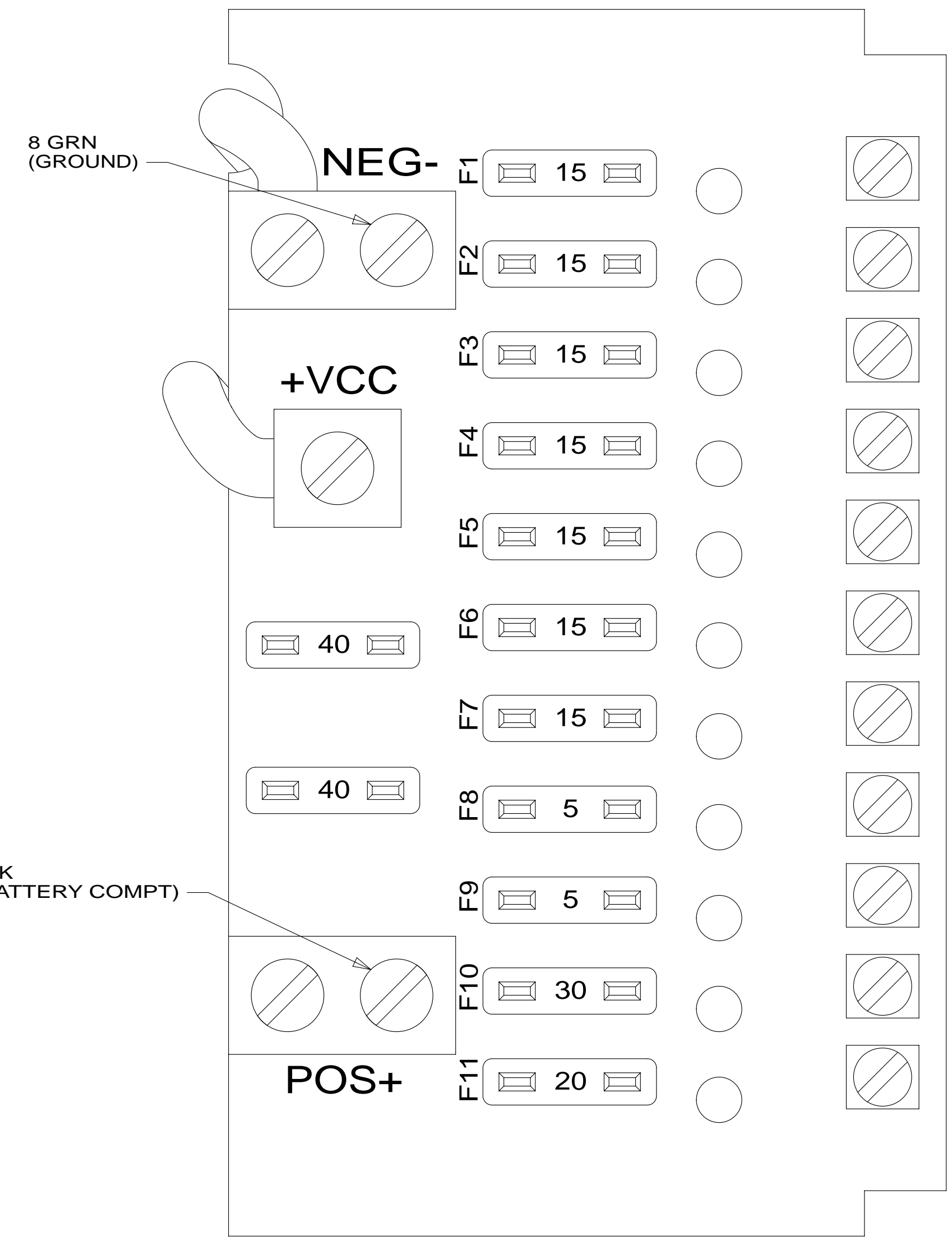


DETAIL CF

SWITCH-AWNING LIGHT  
108357-14-000  
ACTUATOR  
108356-28-CHT

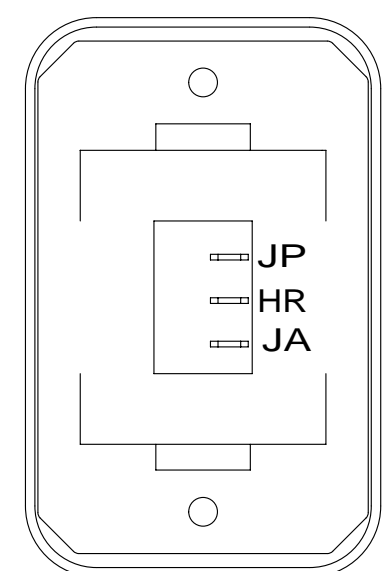
PLATE  
98351-22-CHT  
SCREW  
G11-06-10U (4)

52N



DETAIL CG

- JC 14 YEL (LAMPS)
- JD 14 YEL (LAMPS)
- JE 14 YEL (LAMPS)
- NM 14 YEL (HEATED TANKS) 23R OR 23T
- JA 12 YEL (MONITOR PANEL & PUMP) (ISOLATED CIRCUIT)
- JB 14 YEL (FURNACE)
- FFD 12 YEL (AWNING) (TV/RADIO) 644
- WB 16 YEL (CO/LP GAS DETECTOR)
- ET 16 YEL (REFRIG)
- LLK 10 YEL (FRONT SLIDEOUT)
- JG 10 YEL (MACERATOR PUMP)



SWITCH-ROCKER  
135740-06-CHT  
SWITCH-BASE  
135741-01-CHT  
SWITCH-BEZEL  
135742-01-CHT  
SCREW  
G11-08-08U (2)  
LABEL-SWITCH  
134563-01-CHT

HOLDING TANK HEATER  
TURN OFF When Not In Use  
SEE OPERATORS MANUAL

DETAIL CH

- 644 GREAT ALASKAN RENTAL PACKAGE
- 088 CONVICIENCE & APPEAR PK - TAUP
- 083 CONVICIENCE & APPEAR PKG WHITE
- 52F AWNING - PATIO
- 52N AWNING - PATIO, ELECTRIC
- 23R DRAINAGE SYSTEM/HEAT-PREWIRE
- 23T DRAINAGE SYSTEM-HEATED
- 265 CODES/STANDARDS-CSA/CMVSS
- 1B1 CODES/STANDARDS USA

1B1 265

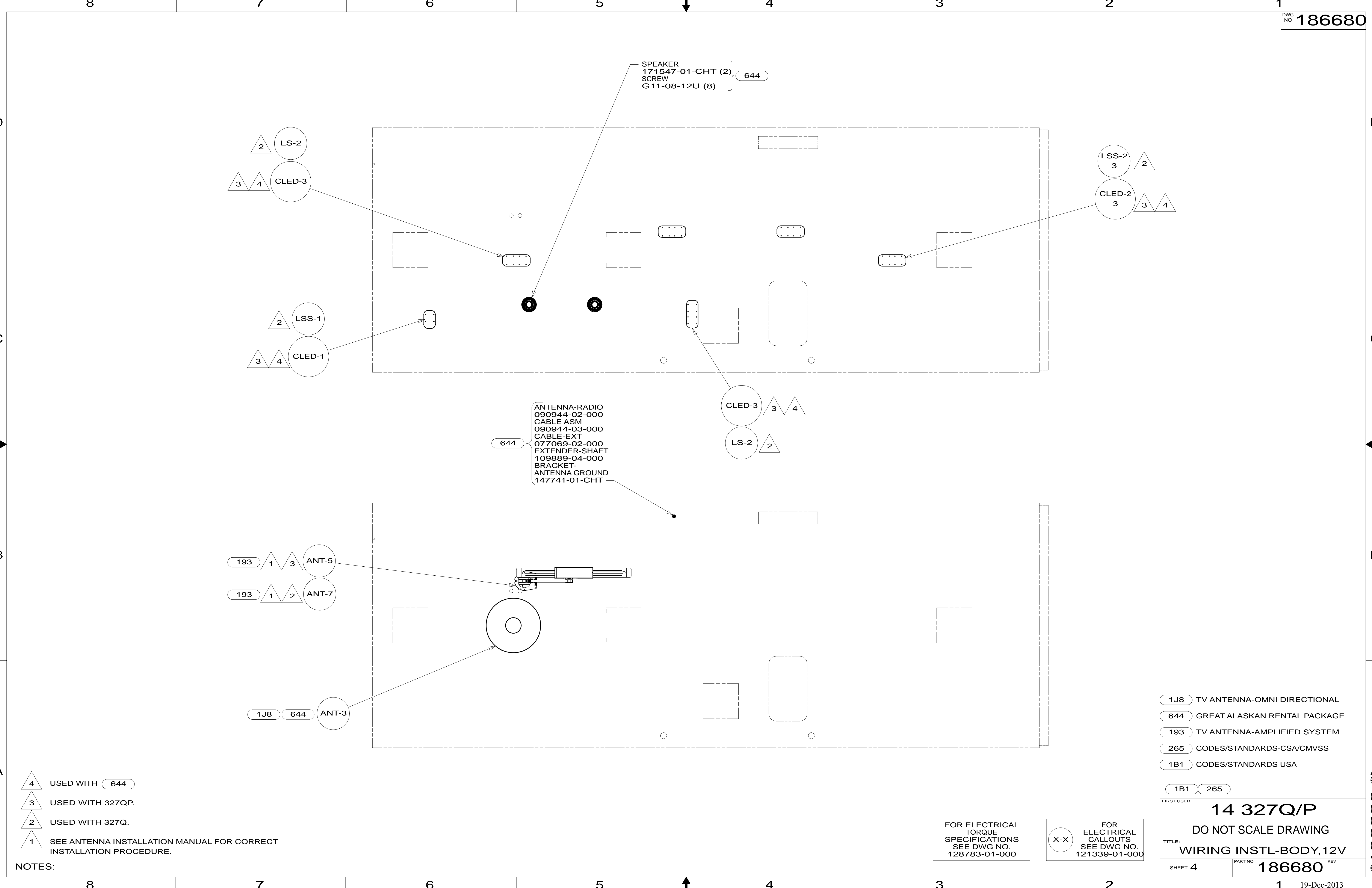
FOR ELECTRICAL TORQUE SPECIFICATIONS SEE DWG NO. 128783-01-000

FOR ELECTRICAL CALLOUTS SEE DWG NO. 121339-01-000

FIRST USED  
**14 327Q/P**  
DO NOT SCALE DRAWING  
TITLE: **WIRING INSTL-BODY, 12V**  
SHEET 3 PART NO **186680** REV

- NOTES:
- 3 USED WITH 327QP.
  - 2 USED WITH 327Q.
  - 1 SEE LOAD CENTER/ATS ASM FOR ADDITIONAL INFORMATION.

\* 186680



- NOTES:
- 4 USED WITH 644
  - 3 USED WITH 327QP.
  - 2 USED WITH 327Q.
  - 1 SEE ANTENNA INSTALLATION MANUAL FOR CORRECT INSTALLATION PROCEDURE.

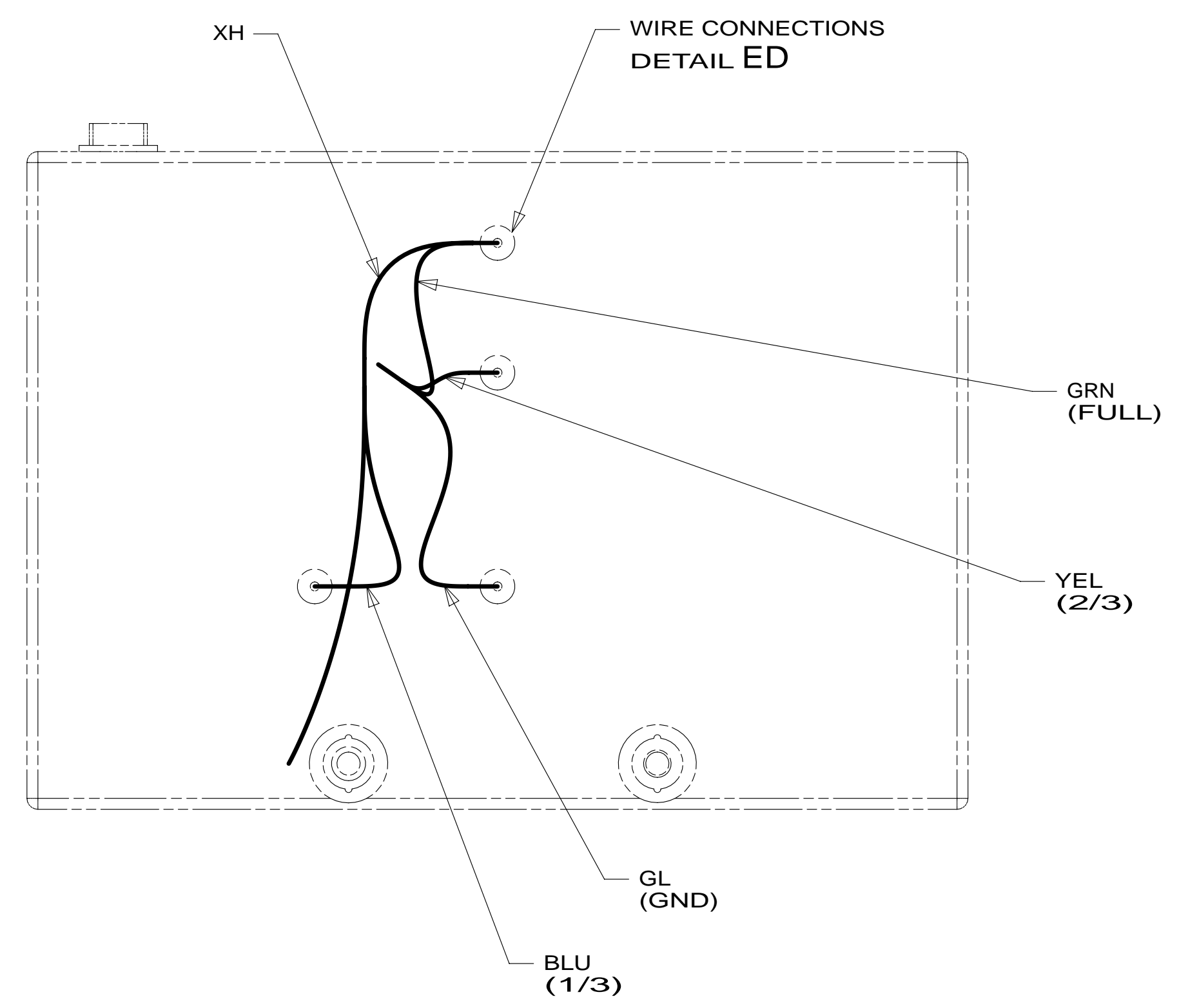
- 1J8 TV ANTENNA-OMNI DIRECTIONAL
- 644 GREAT ALASKAN RENTAL PACKAGE
- 193 TV ANTENNA-AMPLIFIED SYSTEM
- 265 CODES/STANDARDS-CSA/CMVSS
- 1B1 CODES/STANDARDS USA

FIRST USED	14 327Q/P	
DO NOT SCALE DRAWING		
TITLE: WIRING INSTL-BODY, 12V		
SHEET 4	PART NO 186680	REV

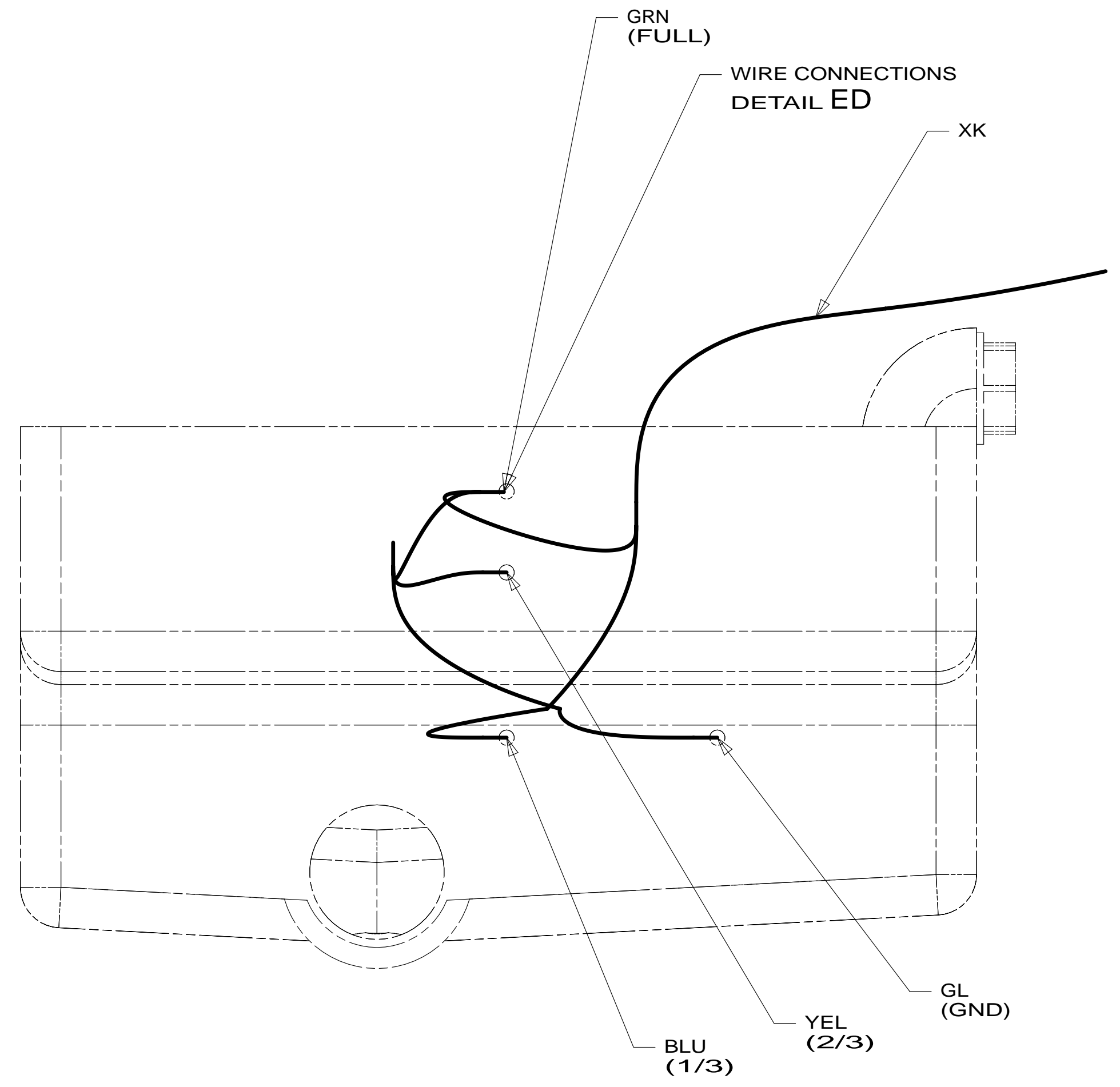
FOR ELECTRICAL TORQUE SPECIFICATIONS SEE DWG NO. 128783-01-000

FOR ELECTRICAL CALLOUTS SEE DWG NO. 121339-01-000

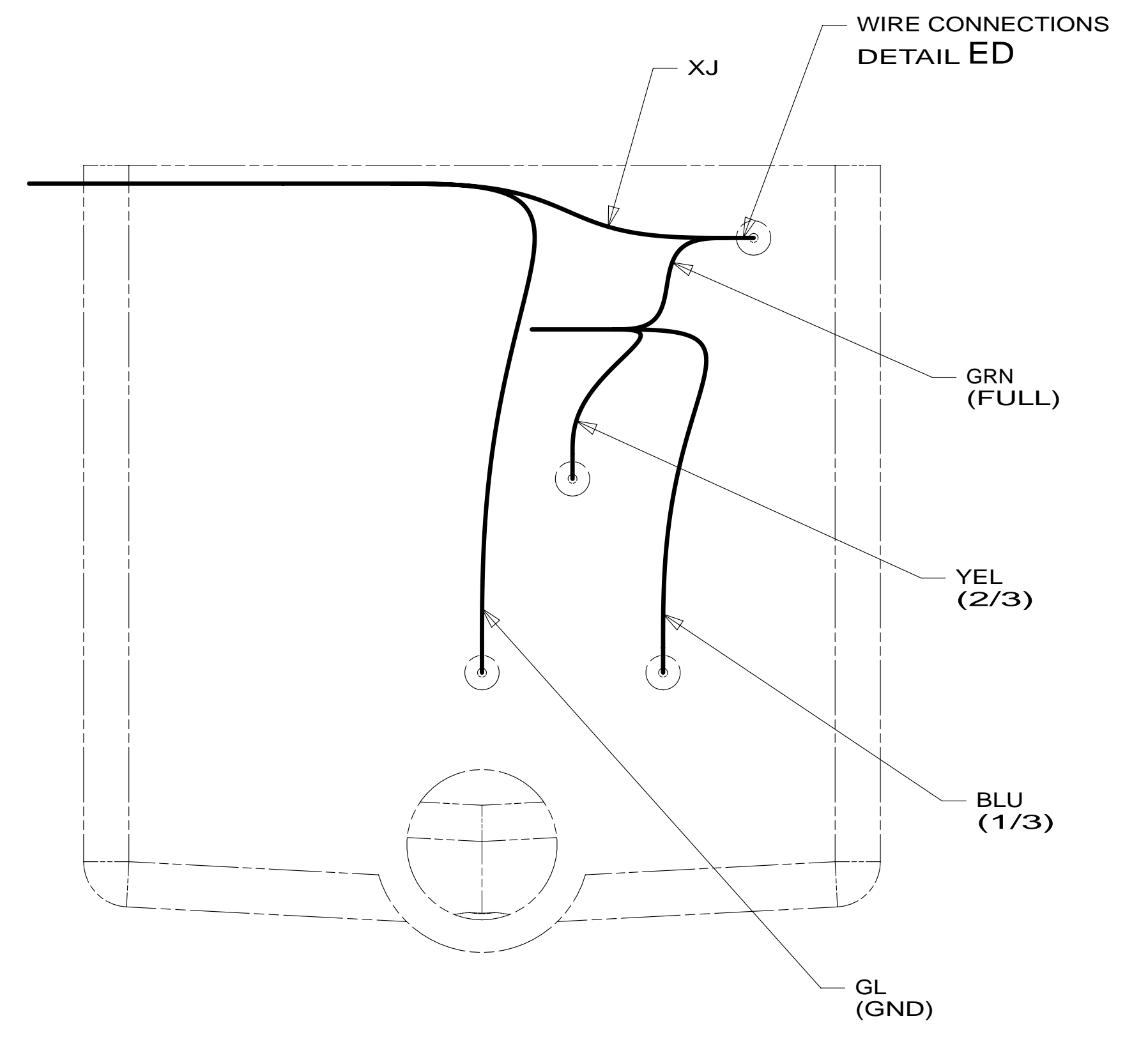
A \* 186680



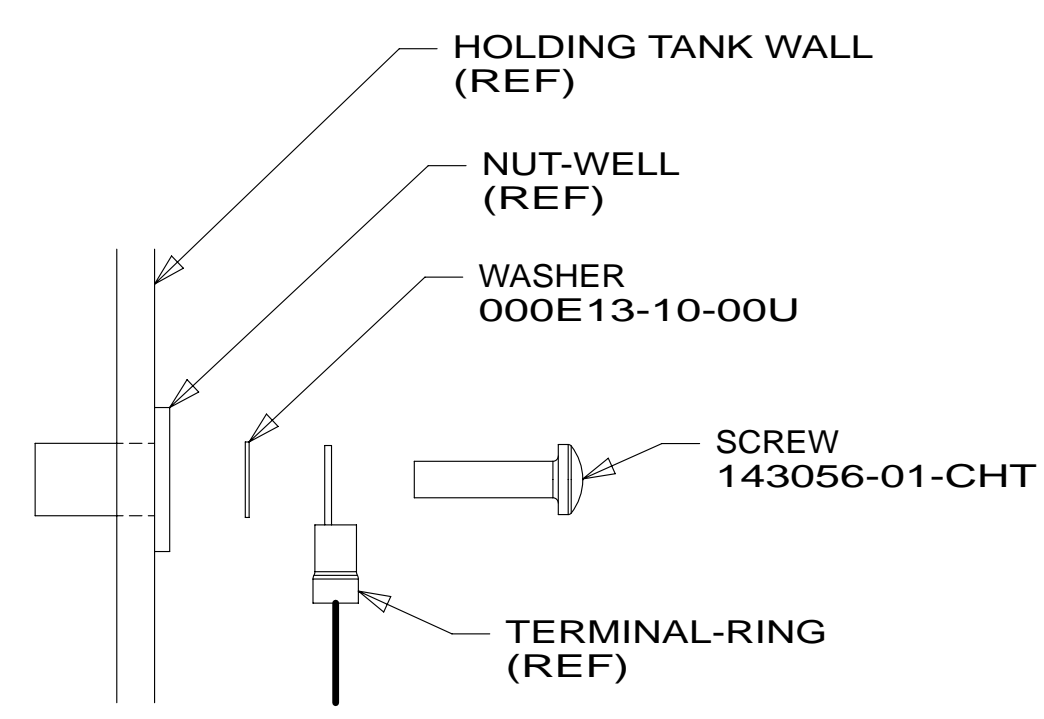
VIEW EA



VIEW EB



VIEW EC



DETAIL ED 1

1 TYPICAL WIRE ATTACHMENT AT ALL LEVEL PROBES (4 EACH) FOR WATER, MAIN, AND AUX HOLDING TANKS.

NOTES:

265 CODES/STANDARDS-CSA/CMVSS

1B1 CODES/STANDARDS USA

1B1 265

FIRST USED 14 327Q/P

DO NOT SCALE DRAWING

TITLE: WIRING INSTL-BODY, 12V

SHEET 5 PART NO. 186680 REV

FOR ELECTRICAL TORQUE SPECIFICATIONS SEE DWG NO. 128783-01-000

X-X FOR ELECTRICAL CALLOUTS SEE DWG NO. 121339-01-000