



**DANGER**

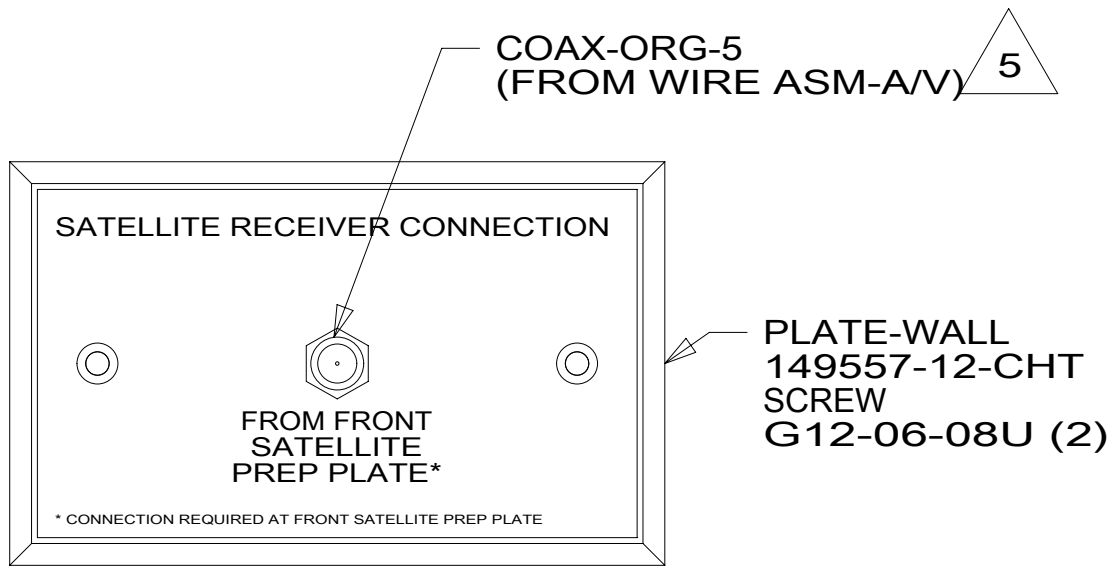
**Danger of electrical shock, burns or death.** Always remove all power sources before attempting any repair, service or diagnostic work. Power can be present from shore power, generator, inverter or battery. All power sources must be disabled and secured before performing any service.



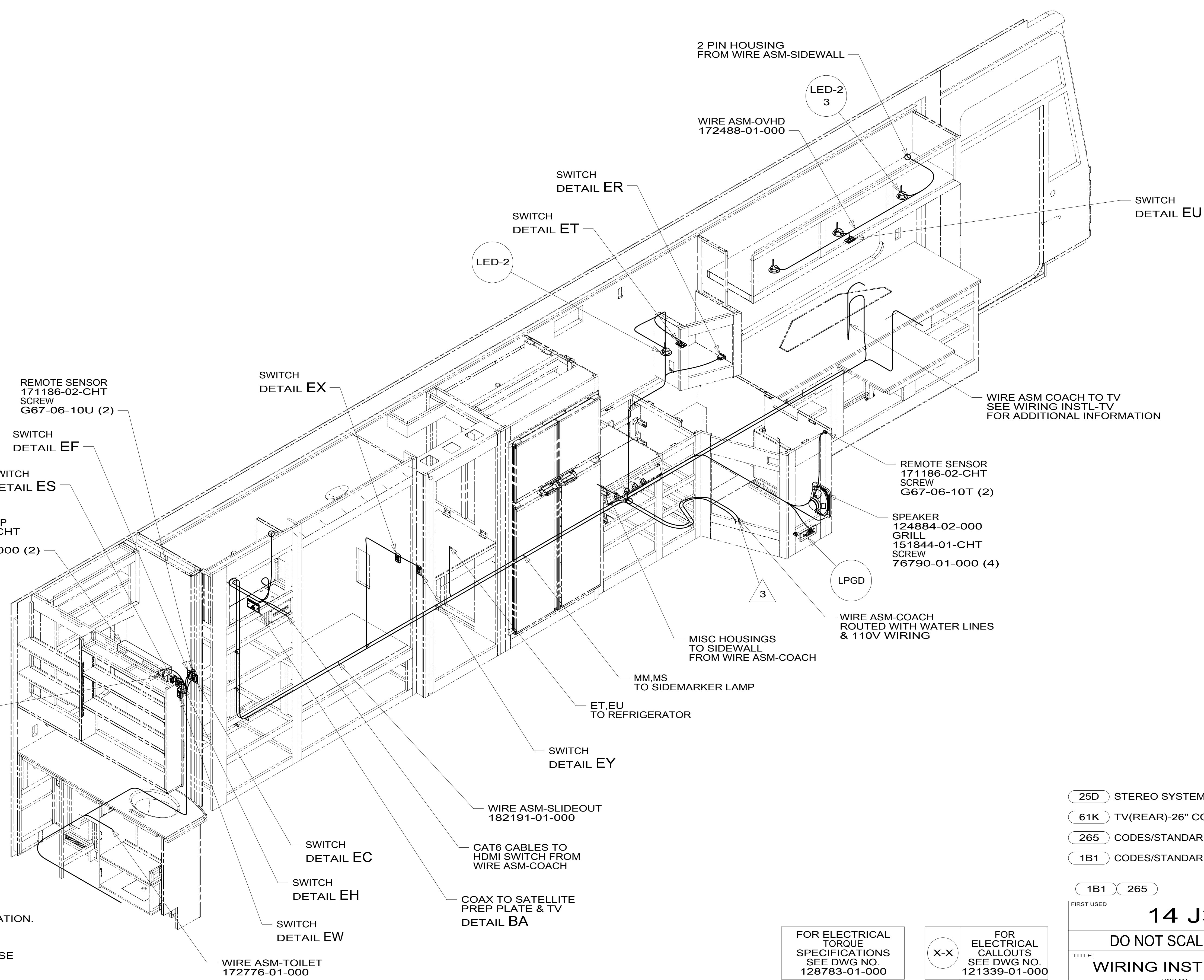
**CAUTION**

If you lack the skills, tools or equipment to perform diagnostic or repair work leave such work to an authorized Winnebago Industries dealer or other qualified shop.





DETAIL BA



- NOTES:
- 5 CONNECTS TO REAR OF SATELLITE PREP PLATE.
  - 4 WITHOUT (21R)
  - 3 WIRE PASSES THROUGH FLOOR AT THIS POINT.
  - 2. SEE WIRING DIAGRAM-BODY, 12V FOR ADDITIONAL INFORMATION.
  - 1. ALL WIRES TO BE CLAMPED WITH CLAMP 10495-01-000 OR WIRE TIE 8343-02-000 EVERY 600MM UNLESS OTHERWISE SPECIFIED.

- (25D) STEREO SYSTEM/W/CD/DVD REAR
- (61K) TV(REAR)-26" COLOR STEREO
- (265) CODES/STANDARDS-CSA/CMVSS
- (1B1) CODES/STANDARDS USA

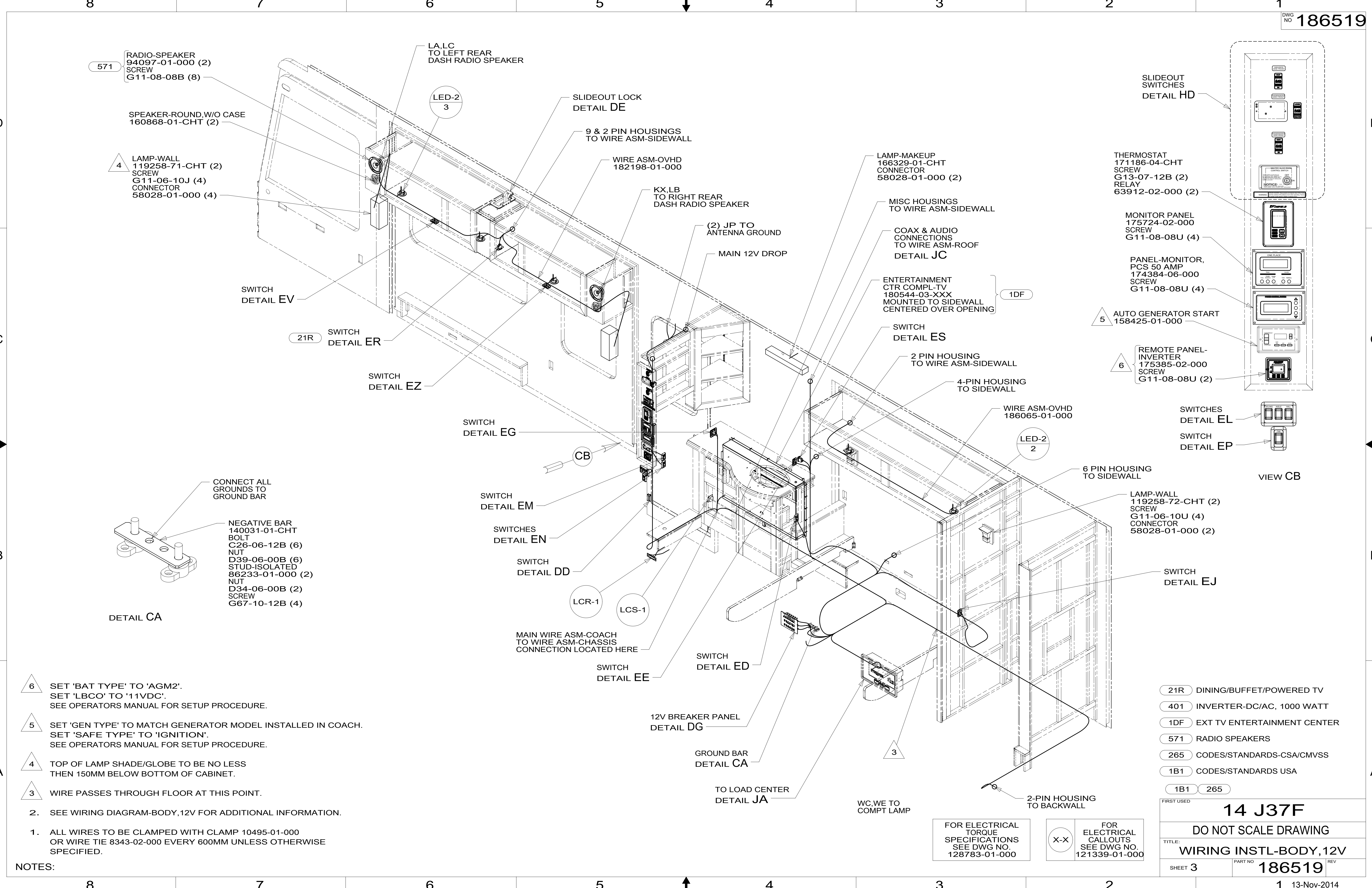
FIRST USED		<b>14 J37F</b>	
<b>DO NOT SCALE DRAWING</b>			
<b>WIRING INSTL-BODY, 12V</b>			
SHEET 2	PART NO	<b>186519</b>	REV
			1 13-Nov-2014

FOR ELECTRICAL TORQUE SPECIFICATIONS SEE DWG NO. 128783-01-000

FOR ELECTRICAL CALLOUTS SEE DWG NO. 121339-01-000

\*186519\*





- NOTES:**
- 1. ALL WIRES TO BE CLAMPED WITH CLAMP 10495-01-000 OR WIRE TIE 8343-02-000 EVERY 600MM UNLESS OTHERWISE SPECIFIED.
  - 2. SEE WIRING DIAGRAM-BODY, 12V FOR ADDITIONAL INFORMATION.
  - 3. WIRE PASSES THROUGH FLOOR AT THIS POINT.
  - 4. TOP OF LAMP SHADE/GLOBE TO BE NO LESS THEN 150MM BELOW BOTTOM OF CABINET.
  - 5. SET 'GEN TYPE' TO MATCH GENERATOR MODEL INSTALLED IN COACH. SET 'SAFE TYPE' TO 'IGNITION'. SEE OPERATORS MANUAL FOR SETUP PROCEDURE.
  - 6. SET 'BAT TYPE' TO 'AGM2'. SET 'LBCO' TO '11VDC'. SEE OPERATORS MANUAL FOR SETUP PROCEDURE.

- (21R) DINING/BUFFET/POWERED TV
- (401) INVERTER-DC/AC, 1000 WATT
- (1DF) EXT TV ENTERTAINMENT CENTER
- (571) RADIO SPEAKERS
- (265) CODES/STANDARDS-CSA/CMVSS
- (1B1) CODES/STANDARDS USA
- (1B1) (265)

FOR ELECTRICAL TORQUE SPECIFICATIONS SEE DWG NO. 128783-01-000

X-X FOR ELECTRICAL CALLOUTS SEE DWG NO. 121339-01-000

FIRST USED

**14 J37F**

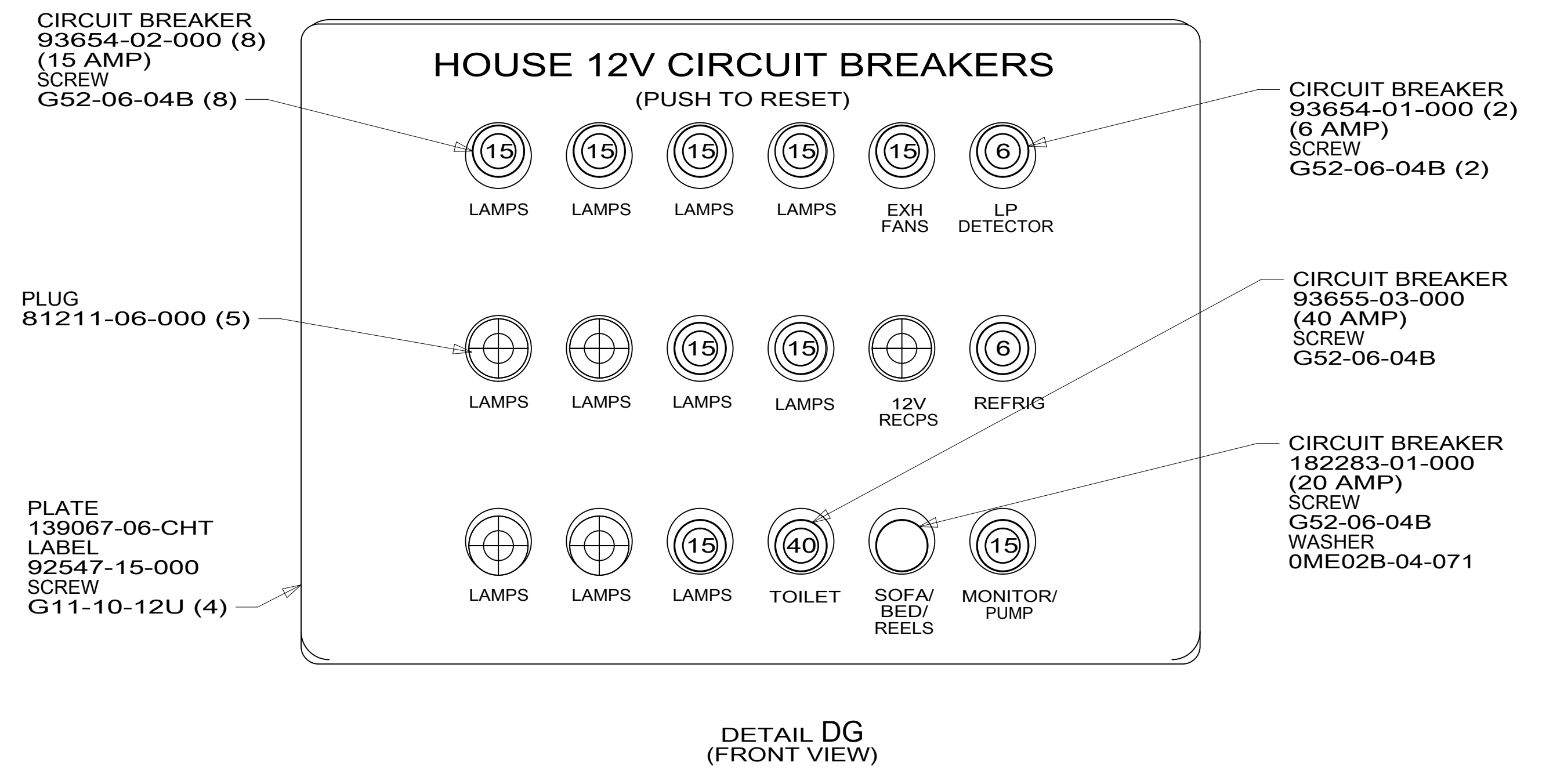
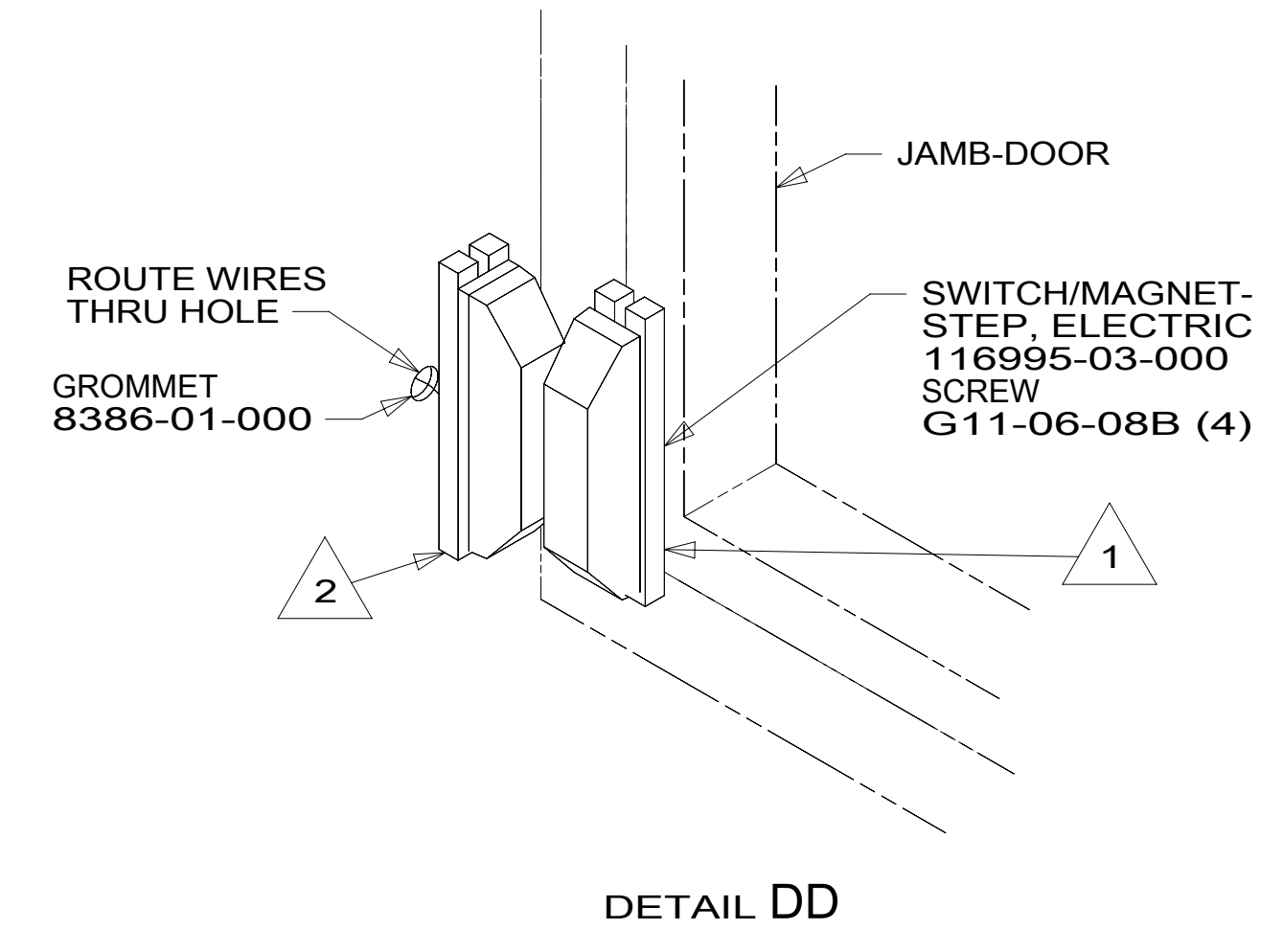
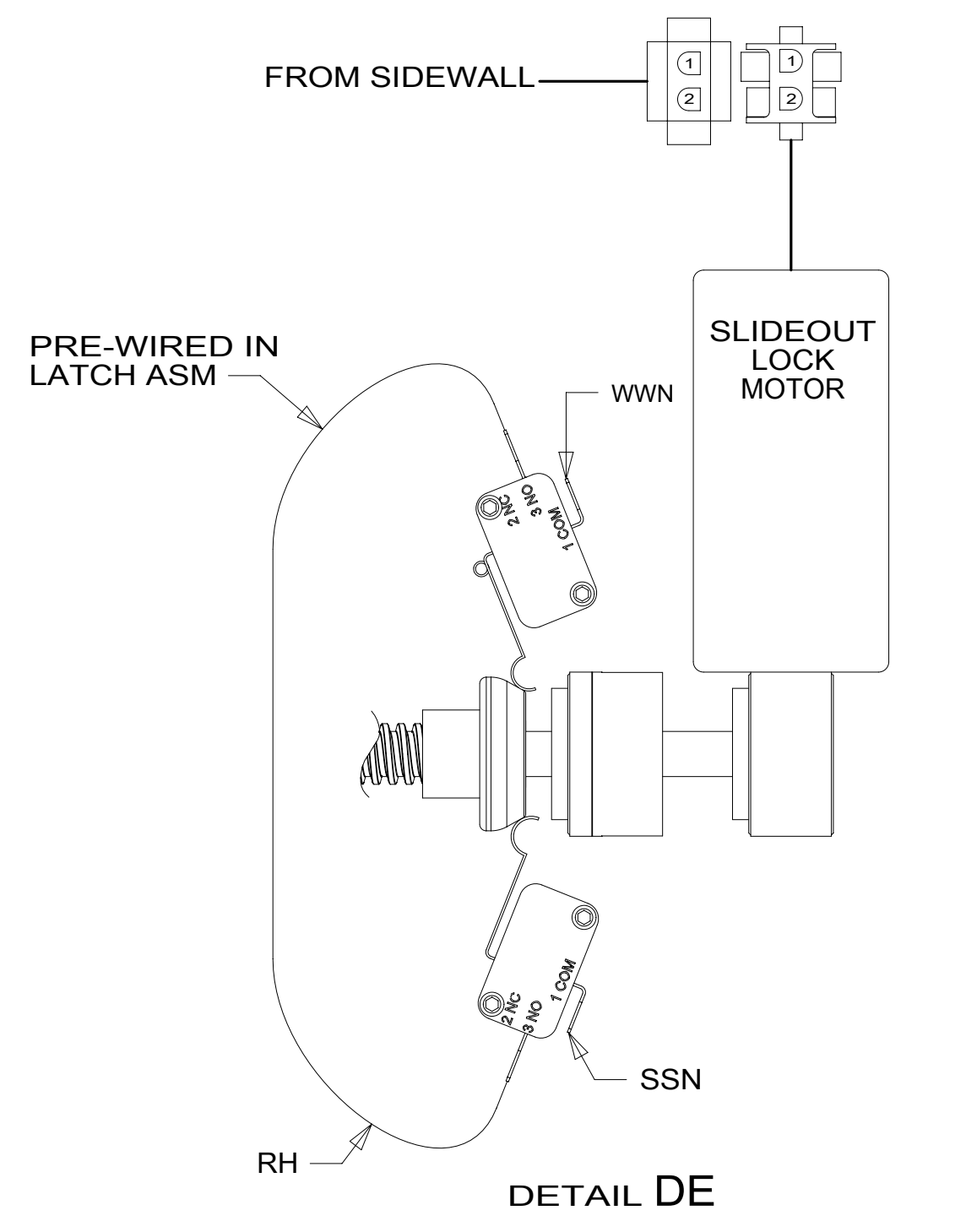
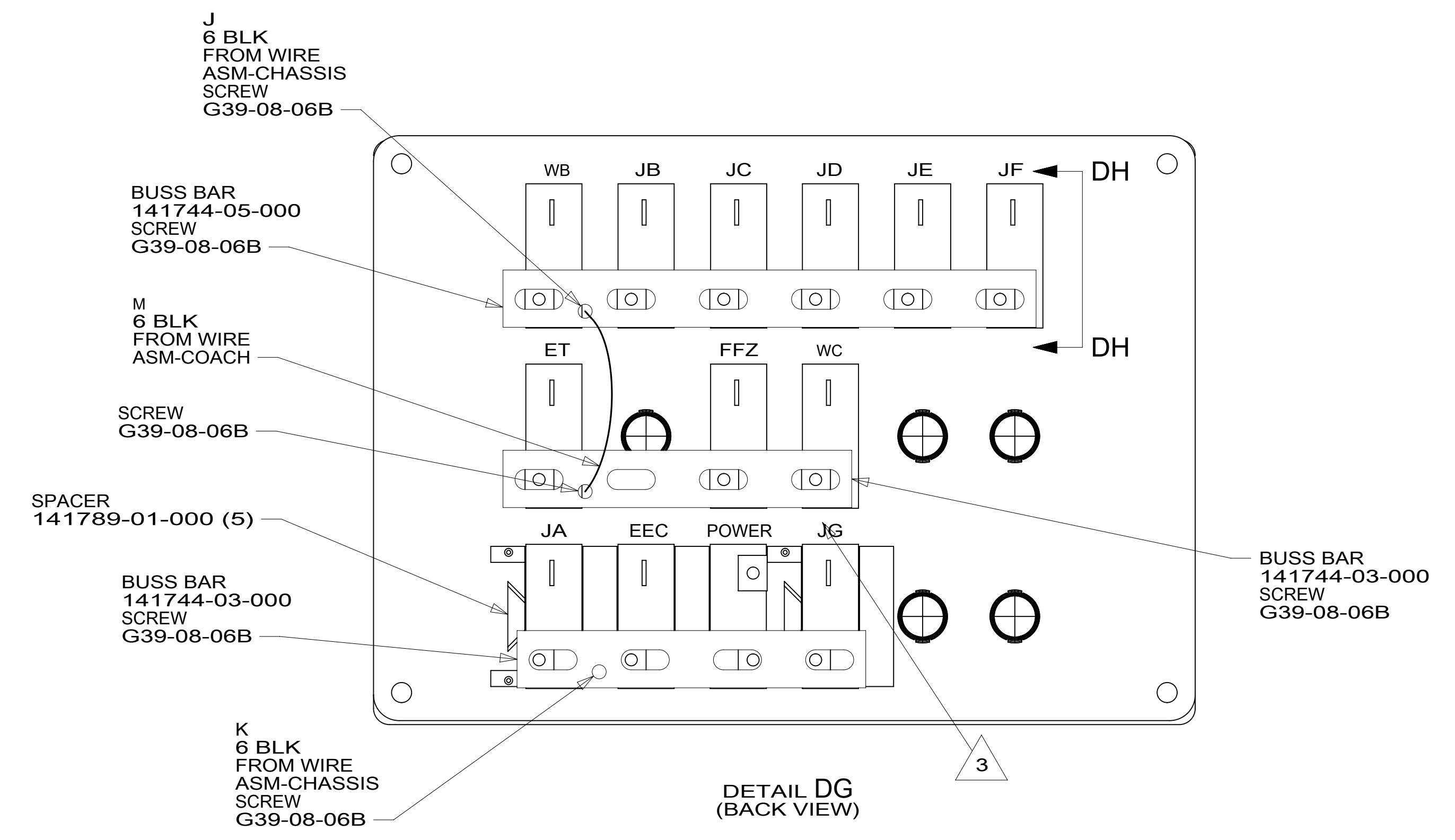
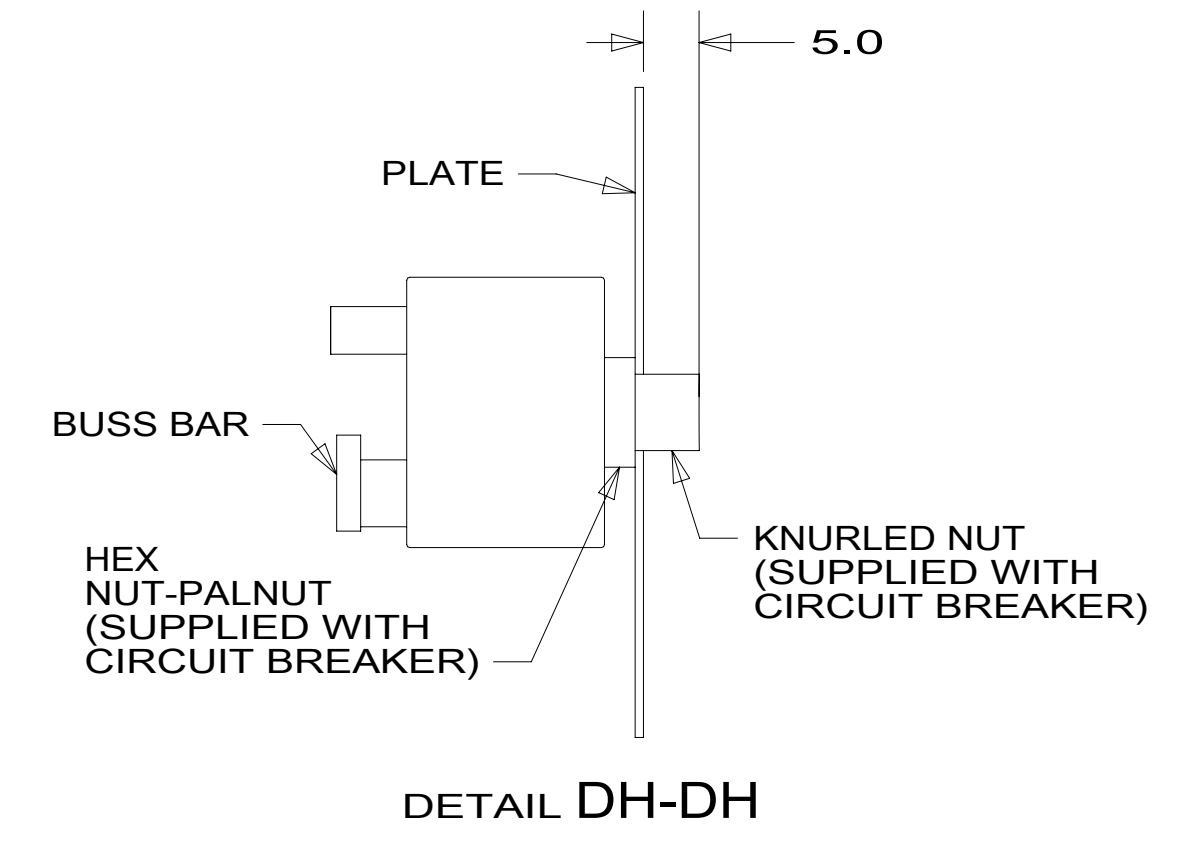
DO NOT SCALE DRAWING

TITLE: **WIRING INSTL-BODY, 12V**

SHEET 3 PART NO **186519** REV

1 13-Nov-2014

\*186519\*



- NOTES:
- 3 CIRCUIT IS MARKED WITH YELLOW TAPE.
  - 2 MOUNT SWITCH AND SPACER TO BLOCK ON JAMB ADJUST HEIGHT TO MATCH MAGNET.
  - 1 MOUNT MAGNET USING PILOT HOLES IN SCREEN DOOR FRAME. MOUNT WITH MAGNET TOWARD SWITCH.

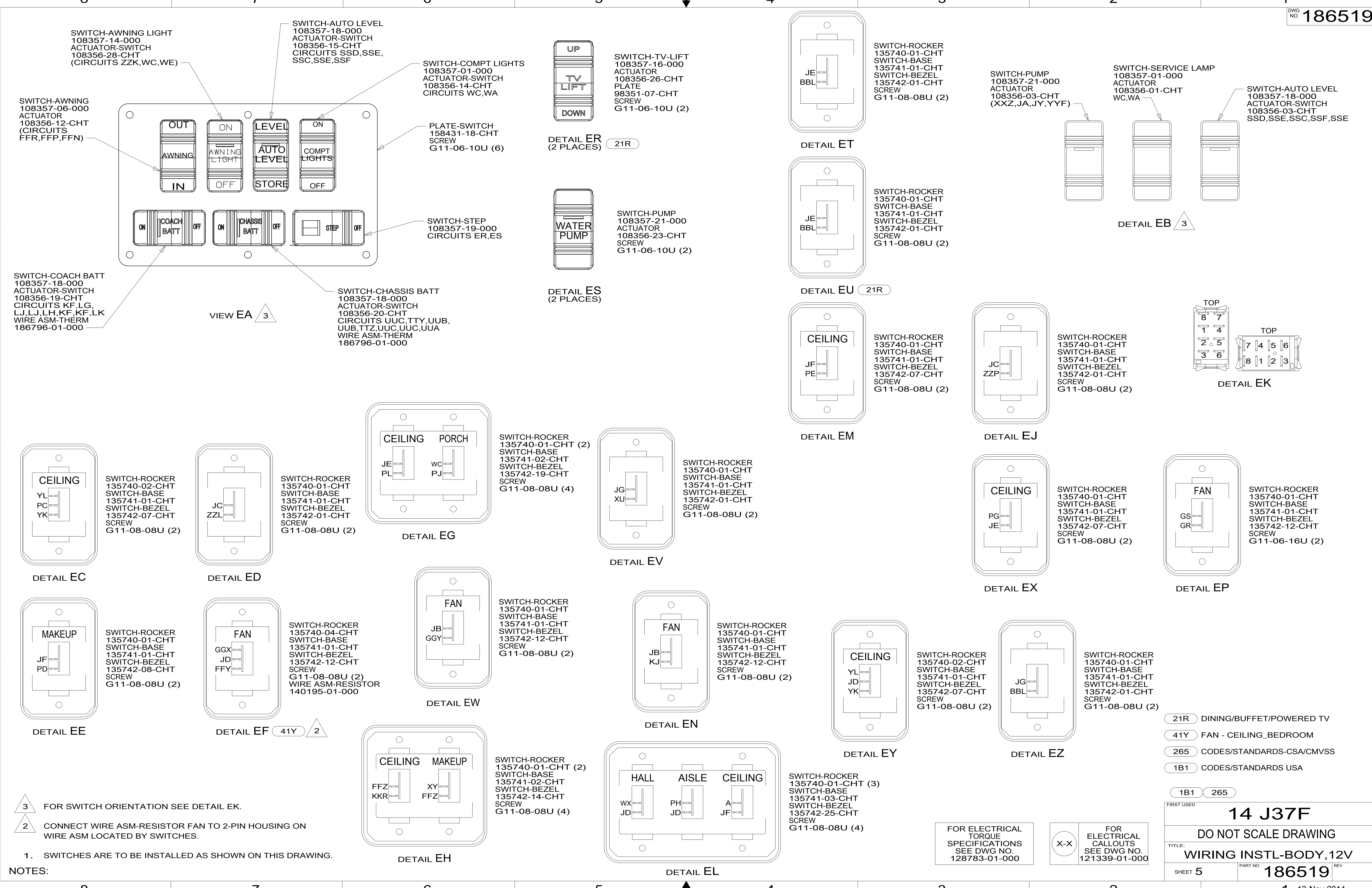
FOR ELECTRICAL TORQUE SPECIFICATIONS SEE DWG NO. 128783-01-000

FOR ELECTRICAL CALLOUTS SEE DWG NO. 121339-01-000

265 CODES/STANDARDS-CSA/CMVSS  
 1B1 CODES/STANDARDS USA  
 1B1 265

FIRST USED	
<b>14 J37F</b>	
DO NOT SCALE DRAWING	
TITLE: <b>WIRING INSTL-BODY, 12V</b>	
SHEET 4	PART NO <b>186519</b> REV
13-Nov-2014	

\*186519\*



D  
C  
B  
A

D  
C  
B  
A

3 FOR SWITCH ORIENTATION SEE DETAIL EK.  
 2 CONNECT WIRE ASM-RESISTOR FAN TO 2-PIN HOUSING ON WIRE ASM LOCATED BY SWITCHES.  
 1. SWITCHES ARE TO BE INSTALLED AS SHOWN ON THIS DRAWING.

- 21R DINING/BUFFET/POWERED TV
- 41Y FAN - CEILING\_BEDROOM
- 265 CODES/STANDARDS-CSA/CMVSS
- 1B1 CODES/STANDARDS USA

FOR ELECTRICAL TORQUE SPECIFICATIONS SEE DWG NO. 128783-01-000

FOR ELECTRICAL CALLOUTS SEE DWG NO. 121339-01-000

FIRST USED

**14 J37F**

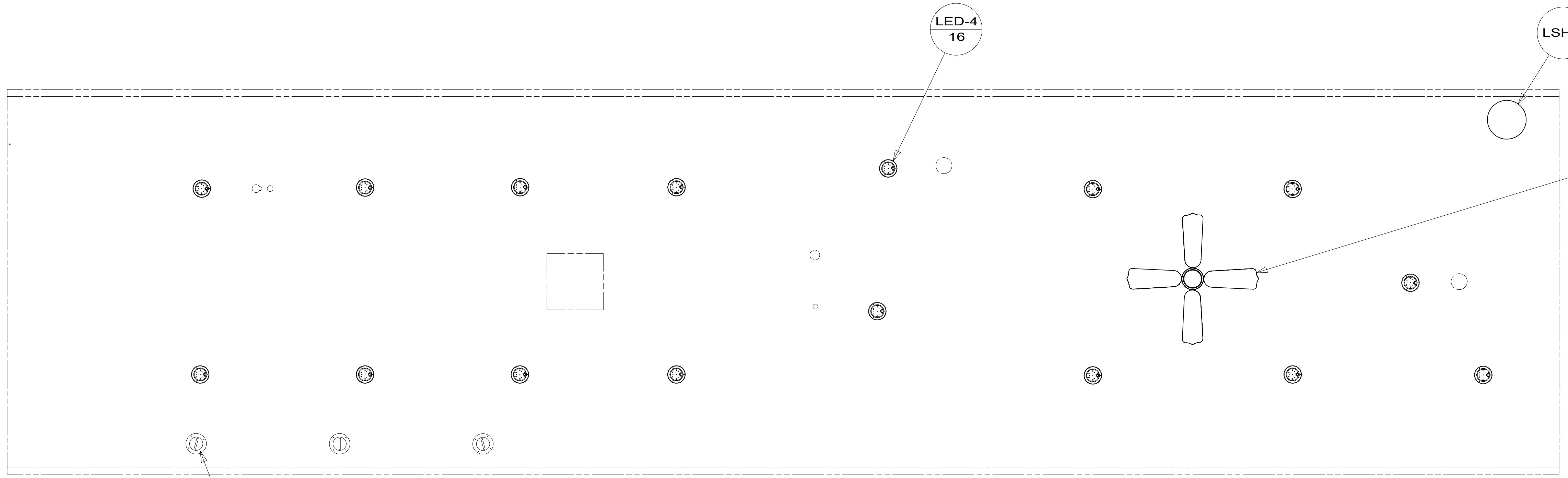
DO NOT SCALE DRAWING

TITLE: **WIRING INSTL-BODY, 12V**

SHEET 5 PART NO **186519** REV

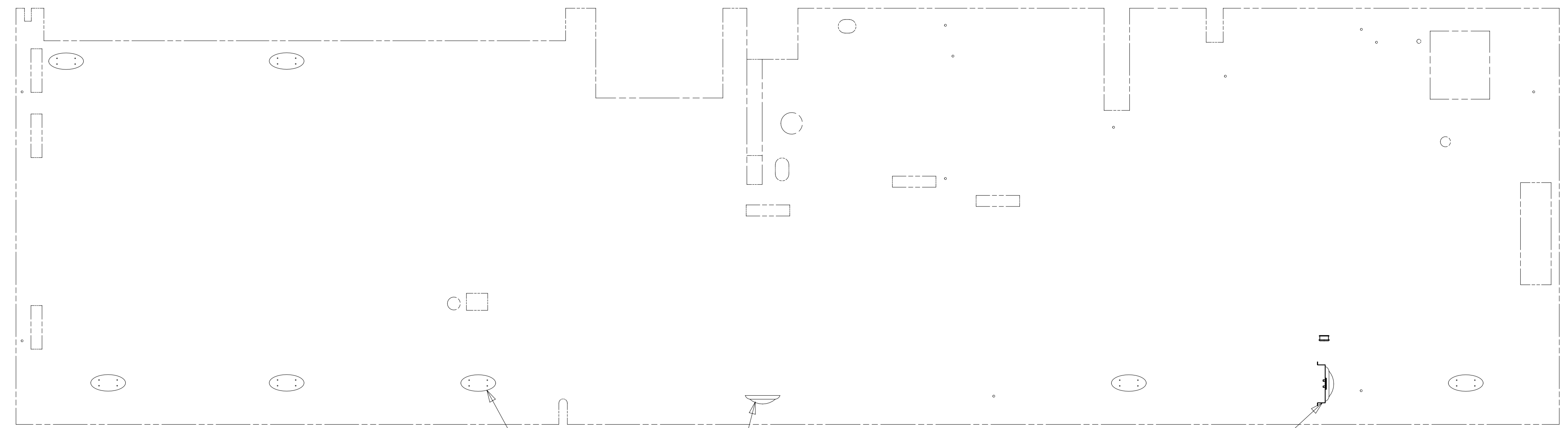
13-Nov-2014

\* 186519 \*

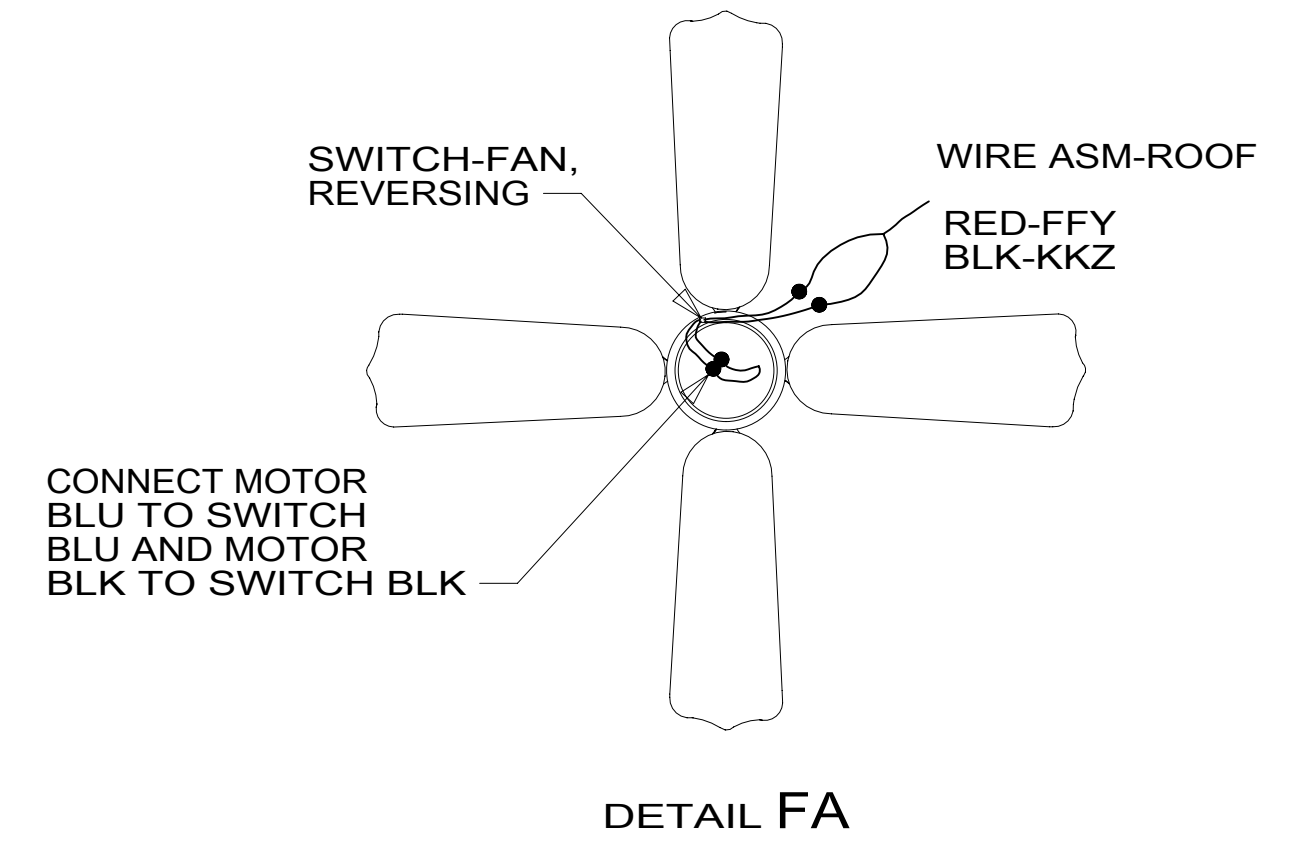


- FAN-CEILING
- 139134-01-CHT
- SCREW
- G11-10-16B (3)
- CONNECTOR
- 58028-01-000 (2)
- DETAIL FA

SPEAKER-ROUND, CEILING  
160867-01-CHT (3)  
SCREW  
000G12-08-12U (12)



WASHER-PLASTIC  
180671-02-CHT  
SCREW  
G11-08-08U (9)



- NOTES:
- 4 CENTER FAN OVER 25MM HOLE IN ROOF.
  - 3 APPLY LOCTITE P/N 62917-06-000 TO FAN BLADE MOUNTING NUT THREADS.
  - 2 LAMP LOCATED IN SERVICE COMPARTMENT.
  - 1 LAMP LOCATED IN POWER CORD COMPARTMENT.

FOR ELECTRICAL TORQUE SPECIFICATIONS SEE DWG NO. 128783-01-000

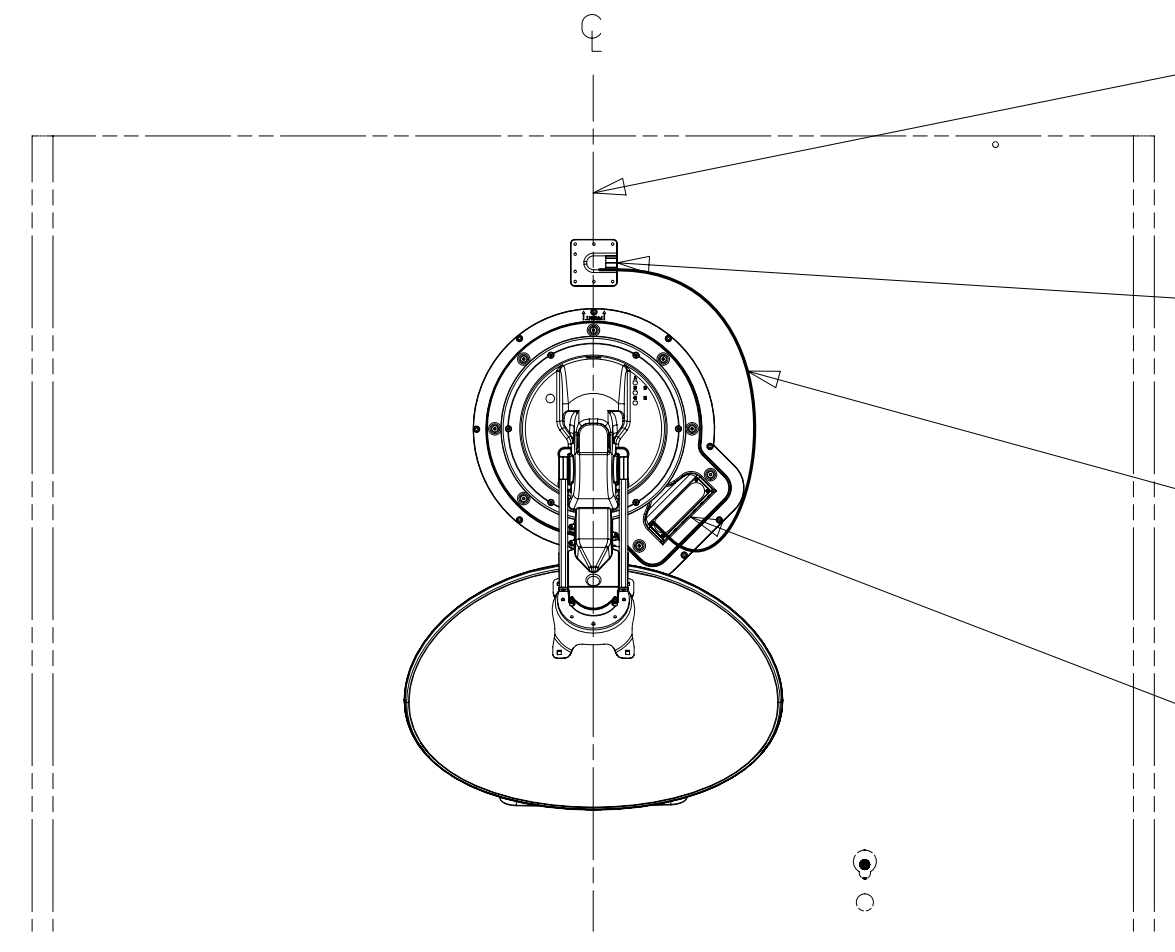
FOR ELECTRICAL CALLOUTS SEE DWG NO. 121339-01-000

- 21R DINING/BUFFET/POWERED TV
- 41Y FAN - CEILING\_BEDROOM
- 265 CODES/STANDARDS-CSA/CMVSS
- 1B1 CODES/STANDARDS USA

FIRST USED		<b>14 J37F</b>	
<b>DO NOT SCALE DRAWING</b>			
<b>TITLE: WIRING INSTL-BODY, 12V</b>			
SHEET 6	PART NO	<b>186519</b>	REV
		1	13-Nov-2014

\*186519 \*A





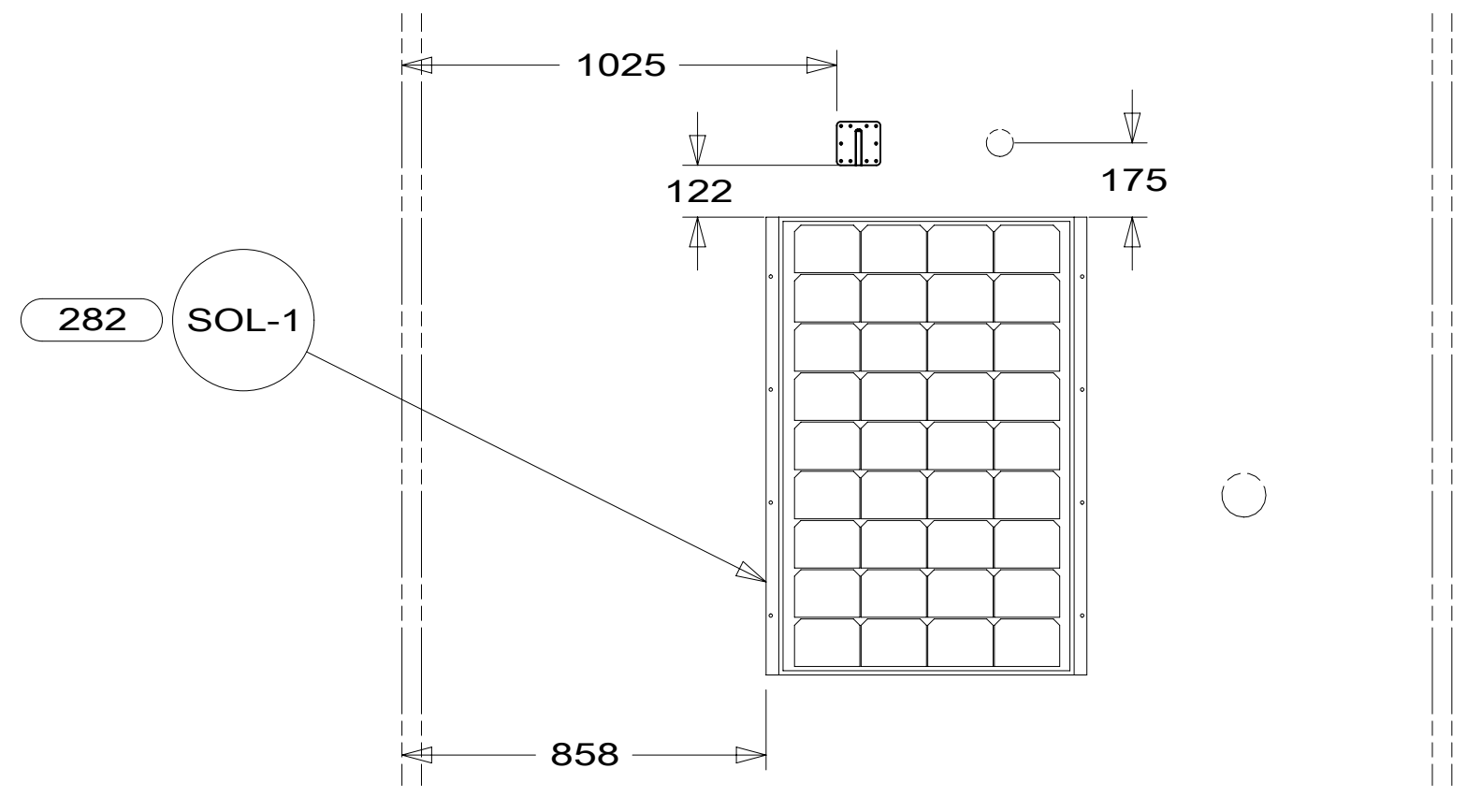
THE SATELLITE DISH AND WIRE CONNECTIONS ARE TO BE PLACED ON THE CENTERLINE OF THE MOTORHOME FACING FORWARD.

SEPARATE CABLES AND INSTALL WIRE COVER OVER HOLE IN ROOF ASM WITH CABLES EXITING ON PASSENGERS SIDE.

WHEN APPLYING ROOF SEALANT TO SATELLITE DISH, PLACE ROOF SEALANT HERE (APPROX. 75MM WIDE) AND PUSH THE CABLES INTO THE SEALANT TO STABILIZE THEM.

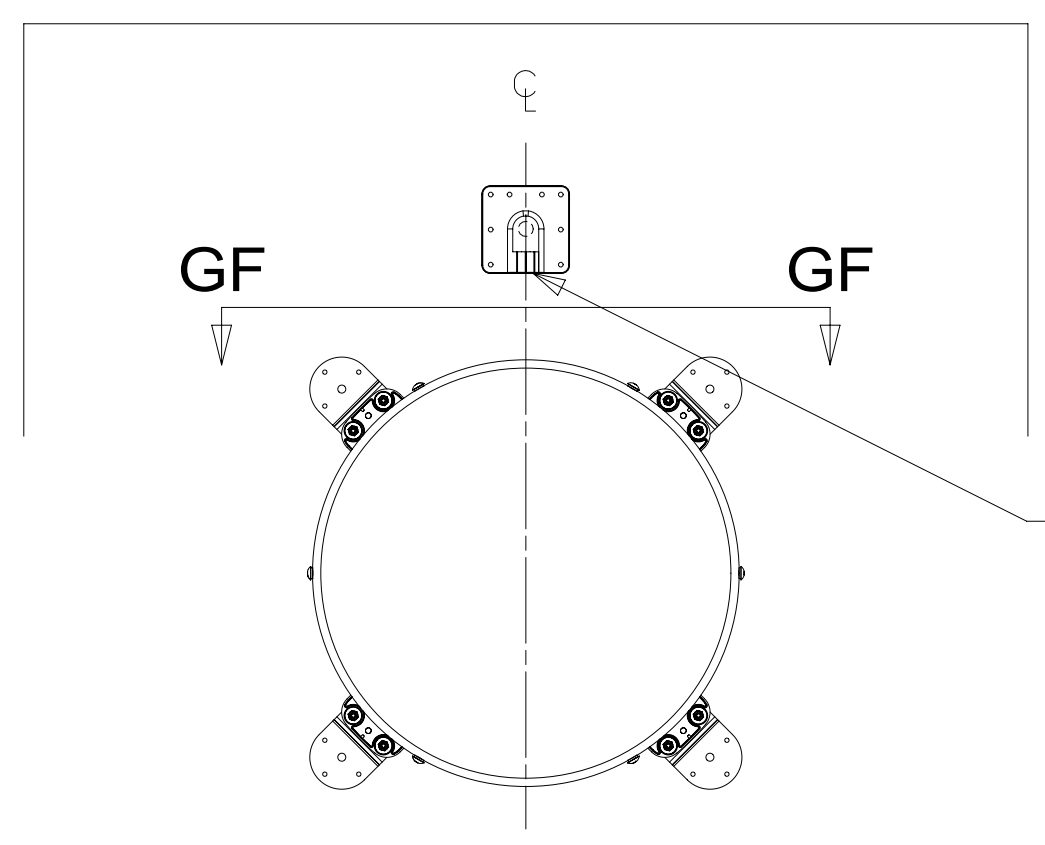
CONNECT CABLE ASM-COAX FROM ROOF ASM TO COAX CABLES ON SATELLITE DISH AND CONNECT 10' CABLE-DATA FROM ROOF ASM TO DATA CABLE FROM SATELLITE DISH AND PLACE ALL CONNECTIONS BACK INTO ROOF ASM.

DETAIL GB



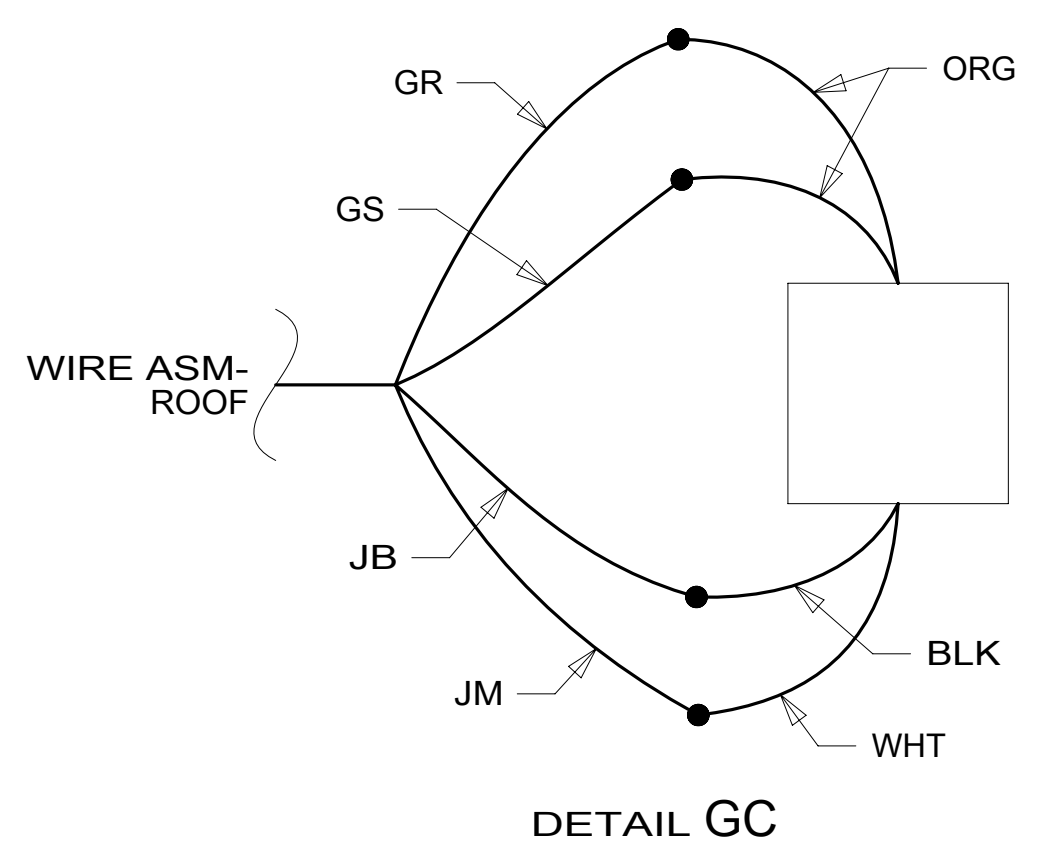
DETAIL GD

- 783 DA-4 1  
DETAIL GB
- 48P DI-3 1  
DETAIL GE



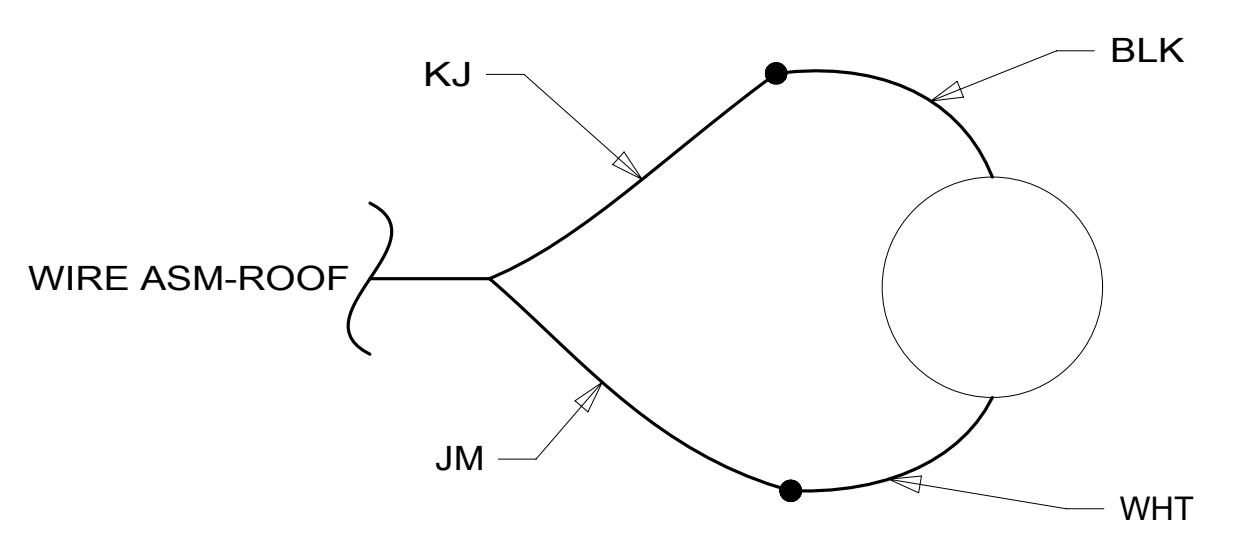
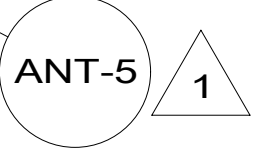
THE SATELLITE DISH WIRE CONNECTIONS ARE TO BE PLACED ON THE CENTERLINE OF THE MOTORHOME FACING FORWARD

DETAIL GE



DETAIL GC

GALLEY VENT  
DETAIL GC



DETAIL GG

SOLAR PANEL  
DETAIL GD

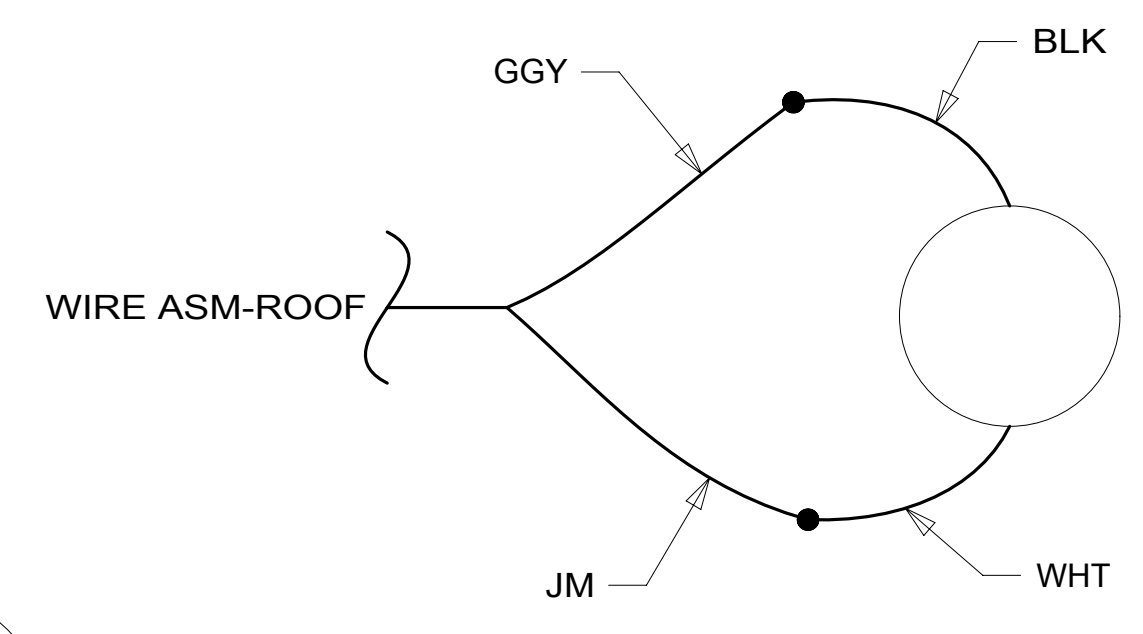
BATH VENT  
DETAIL GG

BATH VENT  
DETAIL GA

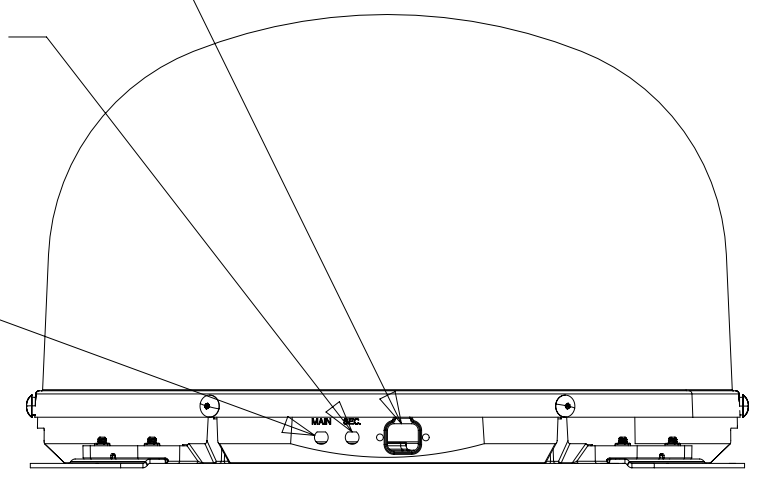
CONNECT 2-PIN HOUSING FROM ROOF ASM TO SATELLITE DISH HERE AND ADD CONVOLUTED TUBING

CONNECT CABLE ASM COAX (ORG-2) FROM ROOF ASM TO SEC INPUT ON SATELLITE DISH

CONNECT CABLE ASM COAX (ORG) FROM ROOF ASM TO MAIN INPUT ON SATELLITE DISH



DETAIL GA



VIEW GF-GF

- 282 SOLAR PANEL - 100 WATT
- 783 SATELLITE HD TV SYSTEM AUTOC
- 48P SAT TV SYSTEM IN-MOTION
- 265 CODES/STANDARDS-CSA/CMVSS
- 1B1 CODES/STANDARDS USA

FIRST USED	
<b>14 J37F</b>	
DO NOT SCALE DRAWING	
TITLE: <b>WIRING INSTL-BODY, 12V</b>	
SHEET 7	PART NO <b>186519</b> REV

FOR ELECTRICAL TORQUE SPECIFICATIONS SEE DWG NO. 128783-01-000

FOR ELECTRICAL CALLOUTS SEE DWG NO. 121339-01-000

2 REMOVE ALL SHIPPING RESTRAINTS AND FIRMLY INSERT THE SUPPLIED PLUGS INTO THE APPROPRIATE SIZED HOLES AS SPECIFIED IN THE INSTALLATION PROCESS.

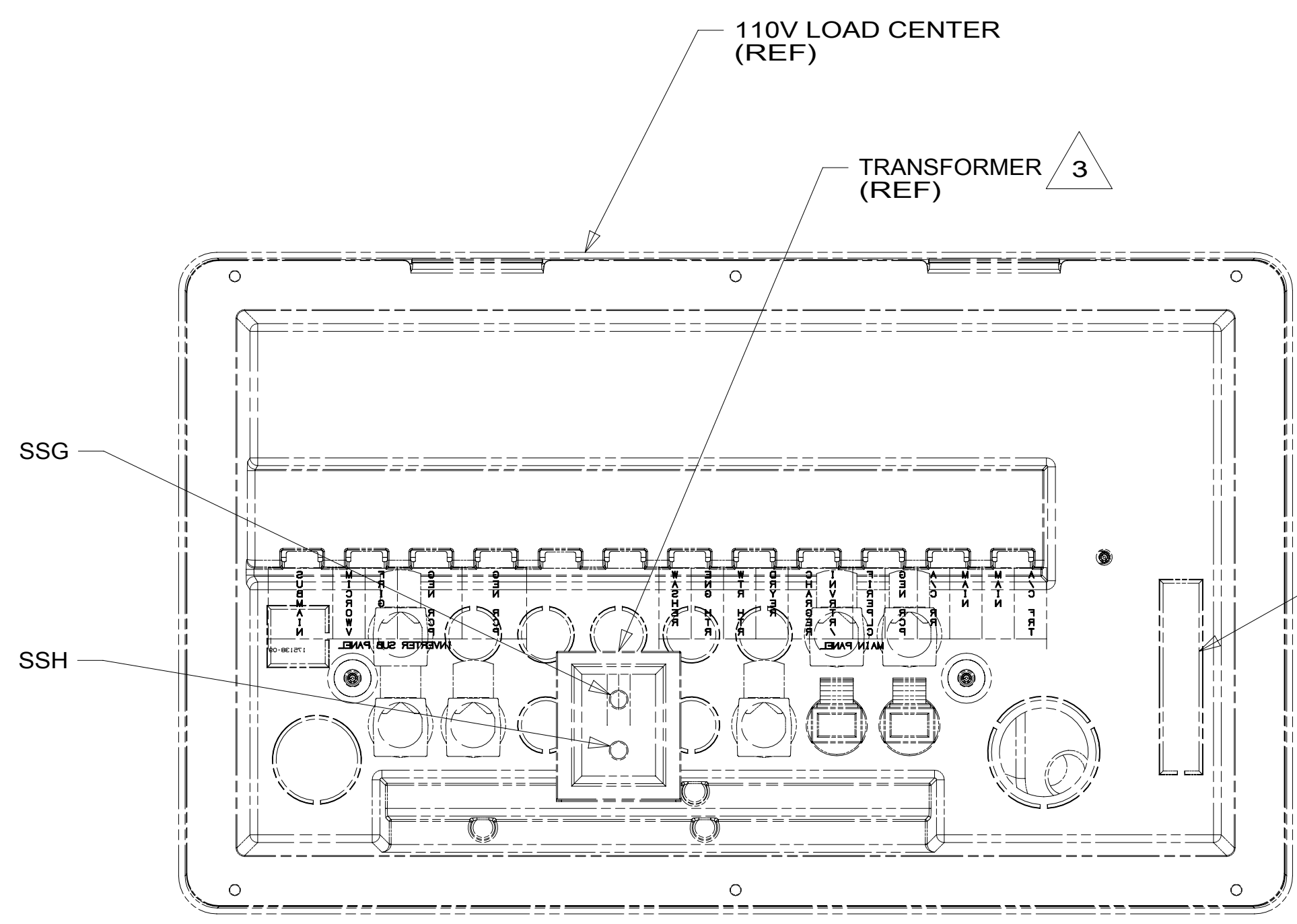
1 SEE ANTENNA INSTALLATION MANUAL FOR CORRECT INSTALLATION PROCEDURE.

NOTES:

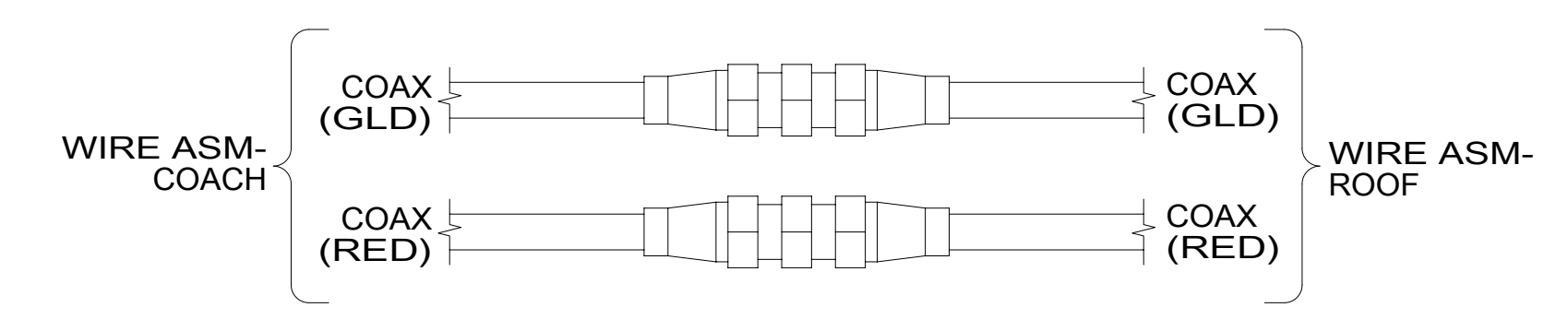
\*186519 \*A



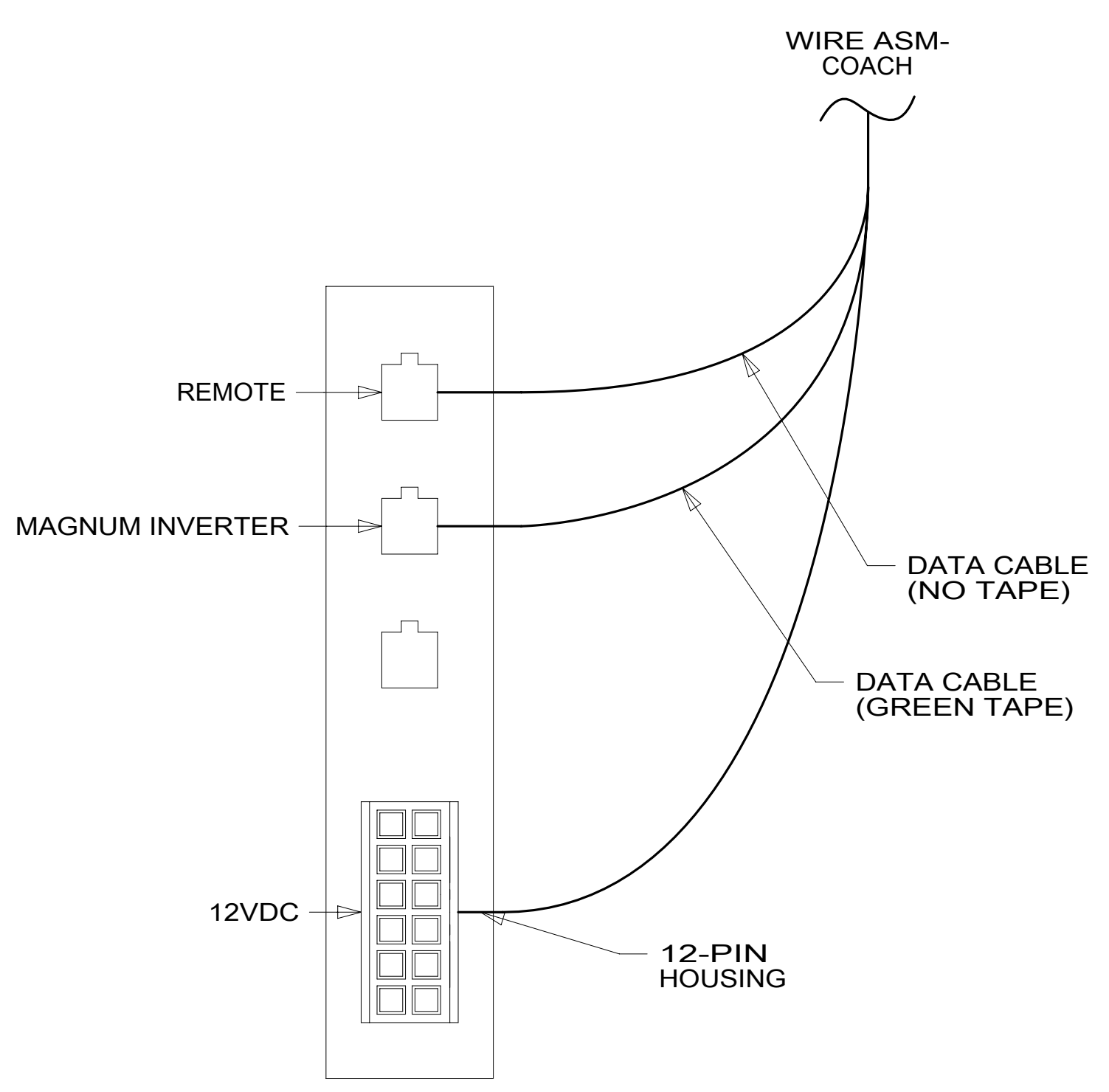




VIEW JA



DETAIL JC



DETAIL JB

- NOTES:
- 3 SEE LOAD CENTER/ATS ASM FOR ADDITIONAL INFORMATION.
  - 2 WRAP BOTH ENDS WITH TAPE 8363-01-000 TO SECURE CONNECTION.
  - 1 FOR POSITIONING DIMENSIONS SEE WIRING INSTL-BODY, 110V.

FOR ELECTRICAL TORQUE SPECIFICATIONS SEE DWG NO. 128783-01-000

FOR ELECTRICAL CALLOUTS SEE DWG NO. 121339-01-000

265	CODES/STANDARDS-CSA/CMVSS
1B1	CODES/STANDARDS USA
1B1	265

FIRST USED	
<b>14 J37F</b>	
DO NOT SCALE DRAWING	
TITLE: <b>WIRING INSTL-BODY, 12V</b>	
SHEET 9	PART NO <b>186519</b> REV
1 13-Nov-2014	

\*186519 \*A