



**DANGER**

**Danger of electrical shock, burns or death.** Always remove all power sources before attempting any repair, service or diagnostic work. Power can be present from shore power, generator, inverter or battery. All power sources must be disabled and secured before performing any service.

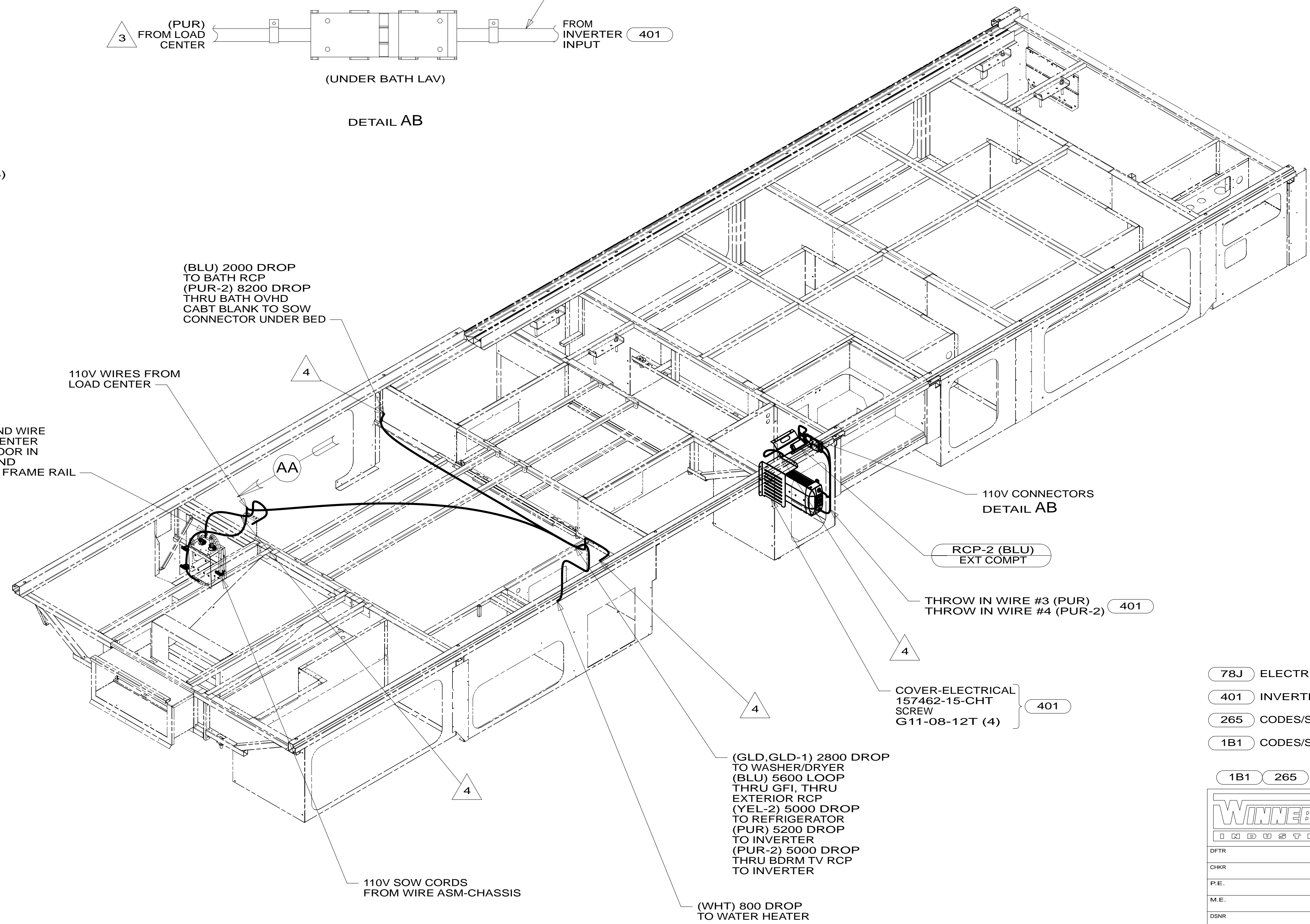
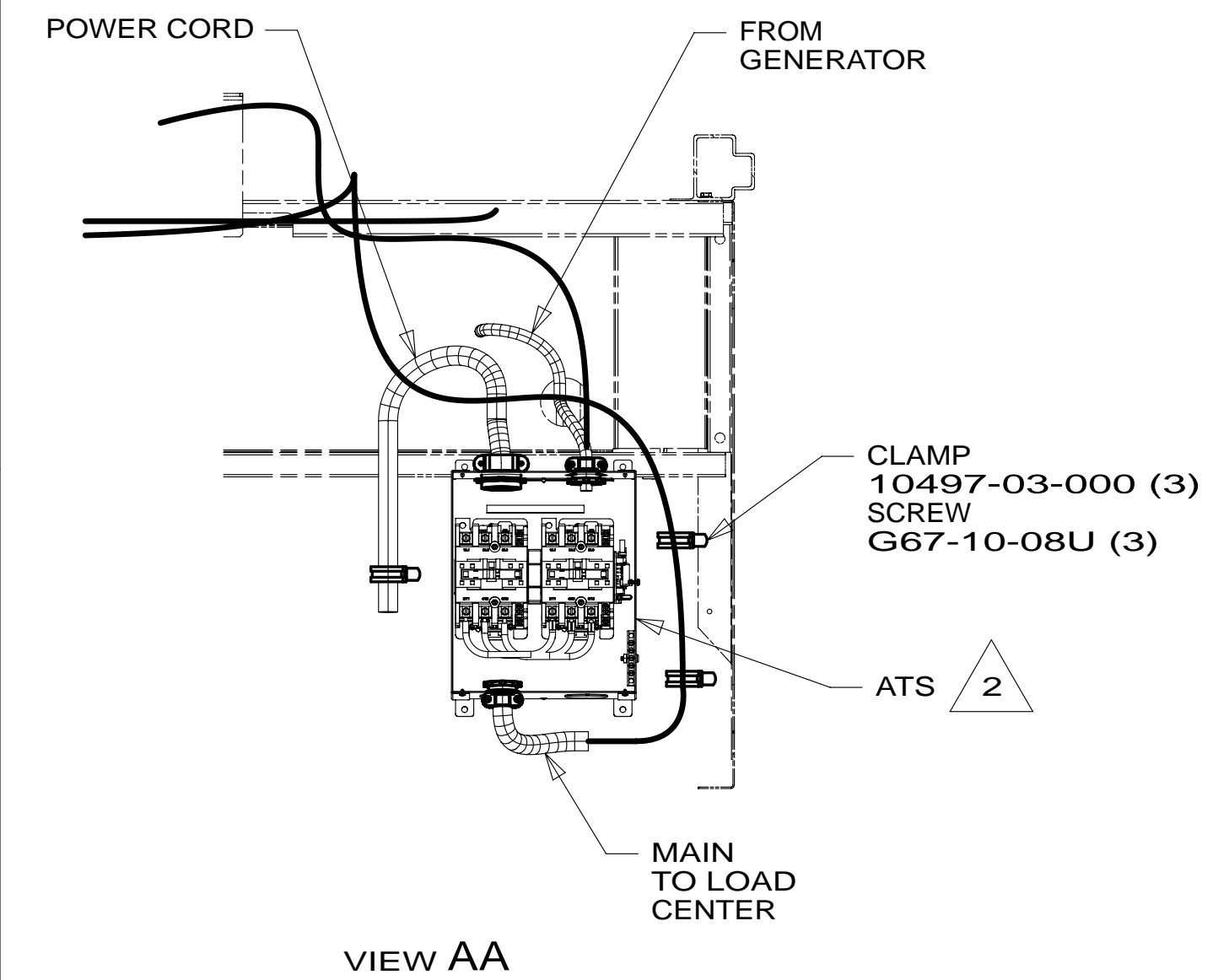
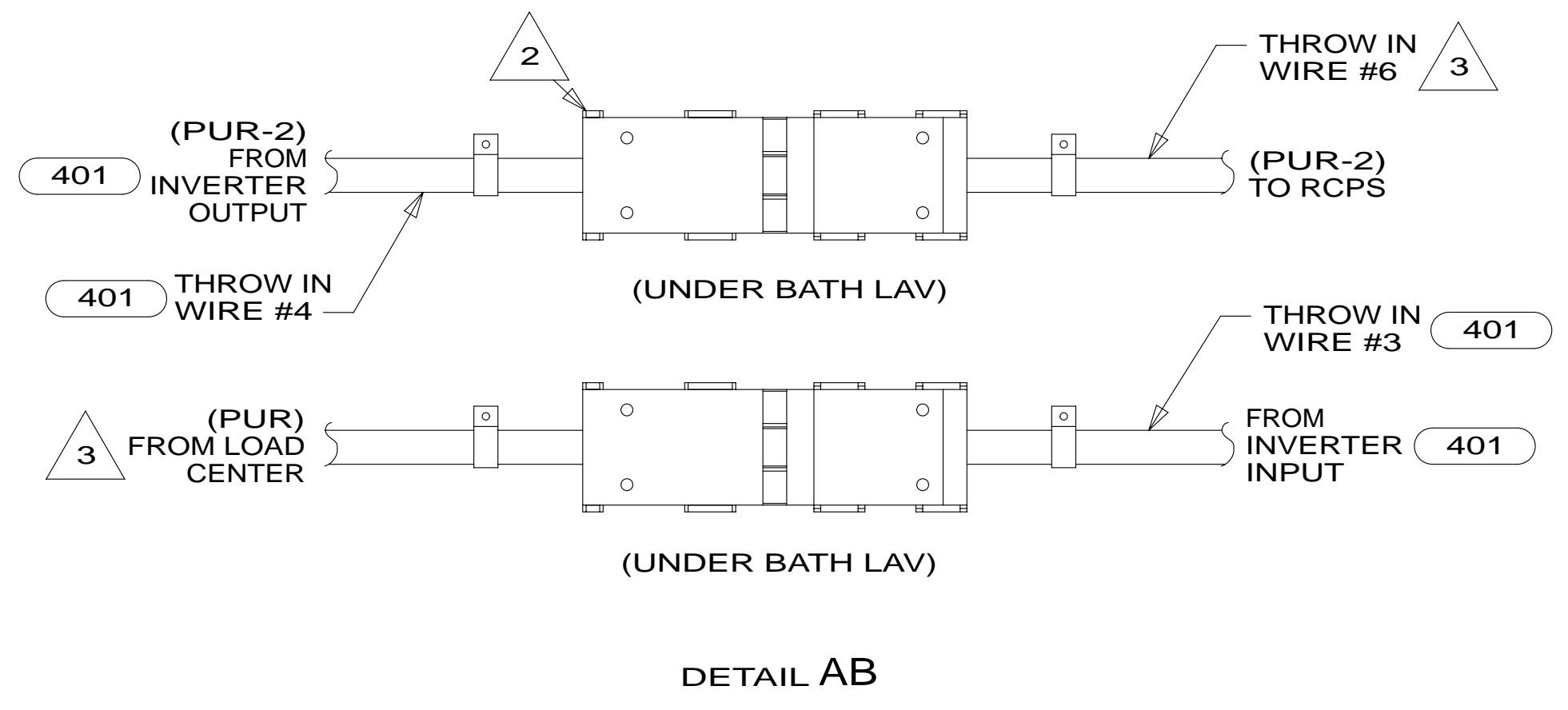


**CAUTION**

If you lack the skills, tools or equipment to perform diagnostic or repair work leave such work to an authorized Winnebago Industries dealer or other qualified shop.

DRAWING NO.	FEATURE
186484-12	1B1 78J
186484-16	265 78J

RELEASE	REV/DATE	DWG NO	186484
REV ZONE	REVISION RECORD	DATE	DFT-ORIG



5. ALL WIRES TO BE SECURED WITH CLAMP 10495 OR 10497 OR WIRE TIE 8343 OR 108046 EVERY 600MM, USE SCREW G67-XX-XXX OR G56-XX-XXX AS APPROPRIATE FOR INSTALLATION.
- 4 WIRE ROUTED THROUGH FLOOR IN THIS AREA.
- 3 WITHOUT INVERTER THROW IN #2 (PUR-2) CONNECTS TO (PUR) FROM LOAD CENTER.
- 2 SEE LOAD CENTER/ATS ASM FOR ADDITIONAL INFORMATION.
1. WIRES ROUTED UNDER FLOOR.

- 78J ELECTRICAL SYSTEM-50 AMP
- 401 INVERTER-DC/AC, 1000 WATT
- 265 CODES/STANDARDS-CSA/CMVSS
- 1B1 CODES/STANDARDS USA

WINNEBAGO INDUSTRIES, INC. COPYRIGHT 2014

14 D35G

ALL DIMENSIONS ARE IN MILLIMETERS

UNSPECIFIED TOLERANCES ARE:

WHOLE DIM (X)	: 3
ONE-PLACE (X.X)	: 1.5
TWO-PLACE (X.XX)	: 0.50
ANGLE	: 1°

DO NOT SCALE DRAWING REFER TO ES0018 FOR FASTENER TIGHTENING GUIDELINES

TITLE: WIRING INSTL-BODY, 110V

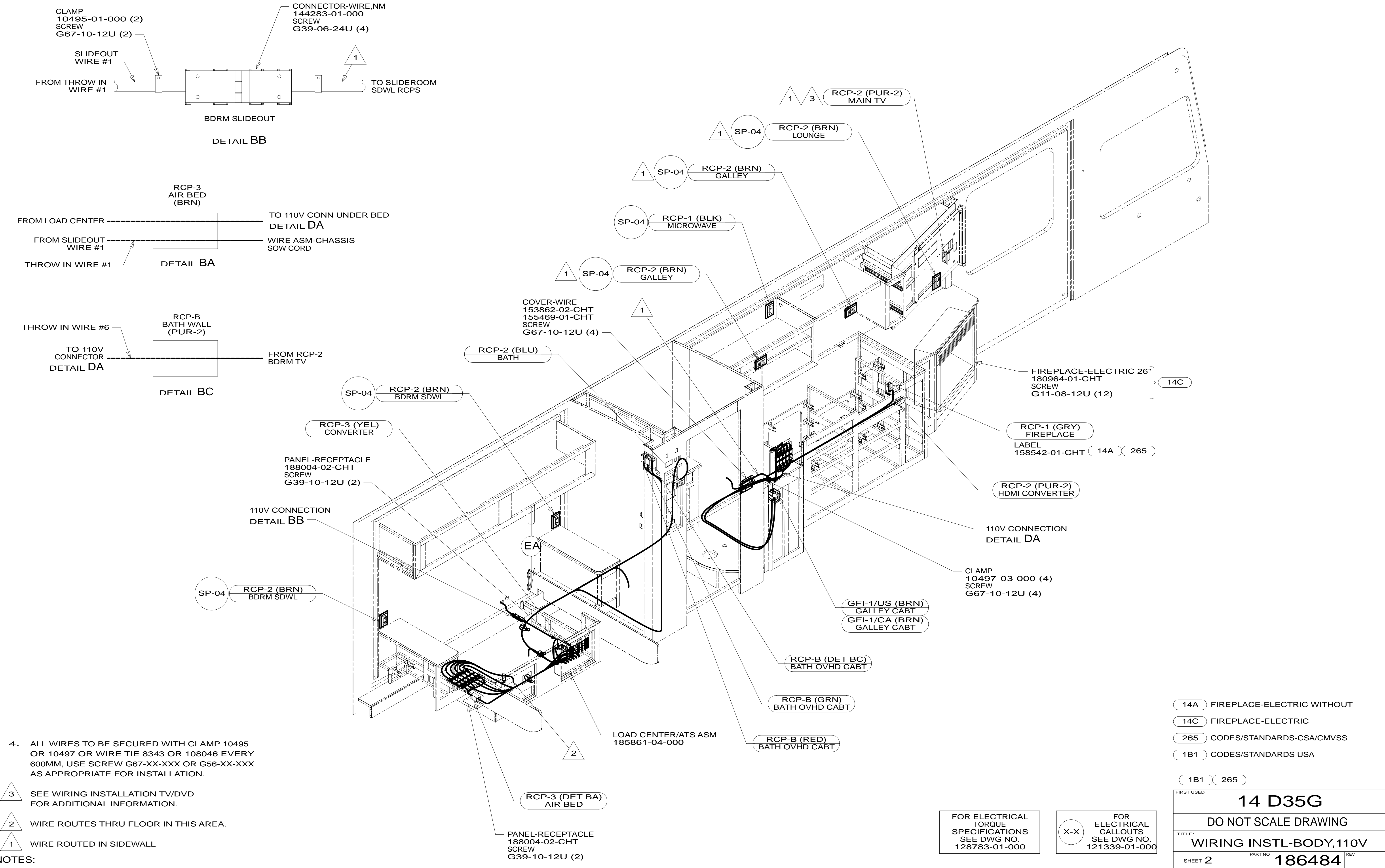
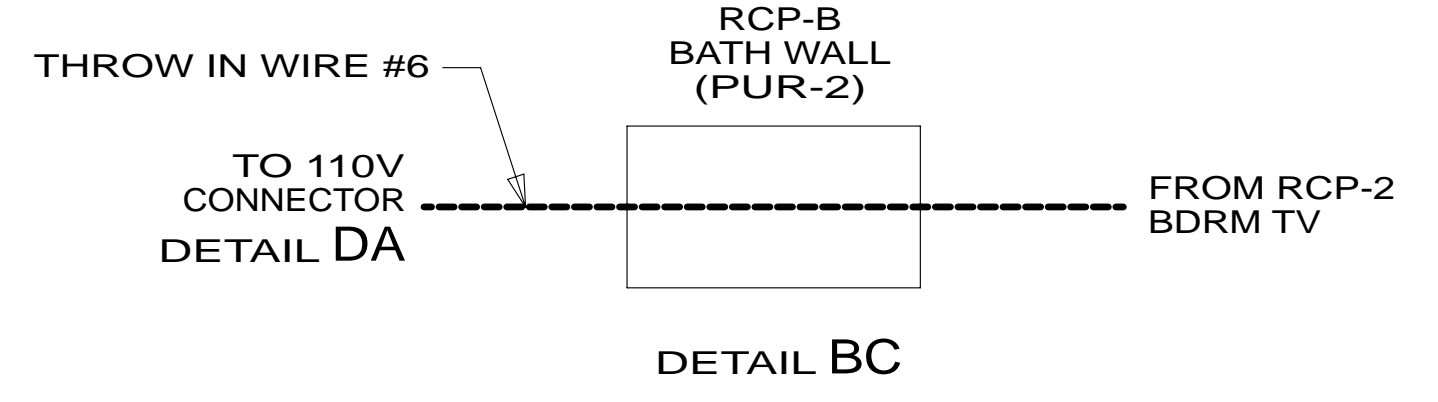
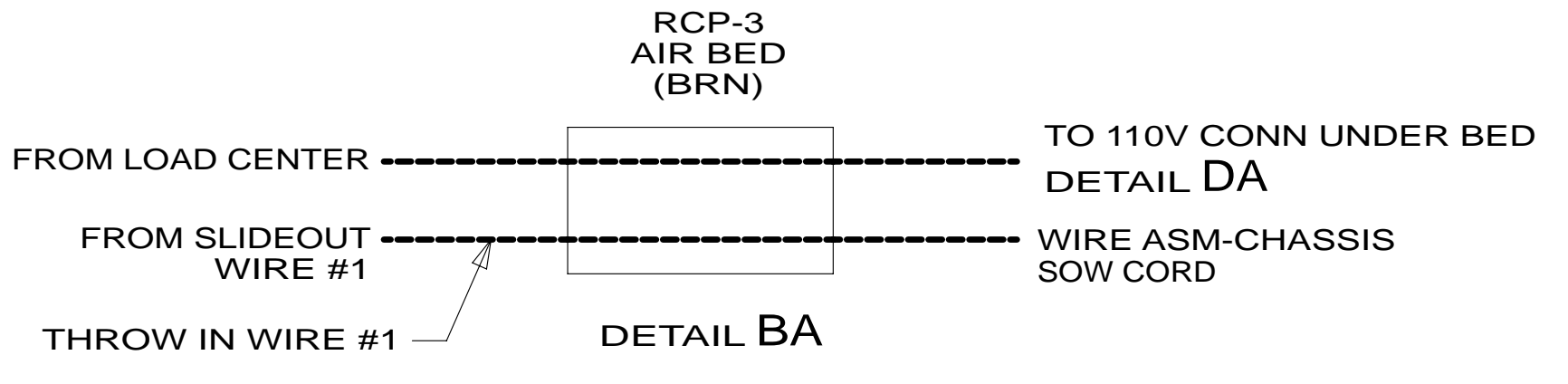
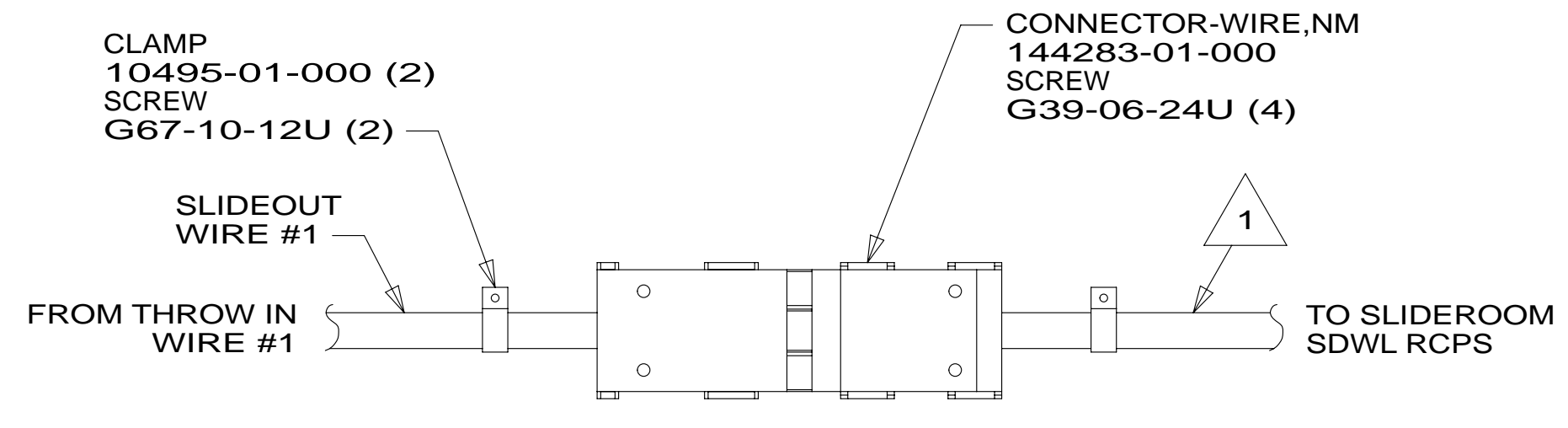
SHEET 1 OF 6 PART NO 186484 REV

REF: 1 18-Jun-2014

FOR ELECTRICAL TORQUE SPECIFICATIONS SEE DWG NO. 128783-01-000

FOR ELECTRICAL CALLOUTS SEE DWG NO. 121339-01-000

\* 186484 \* A



- NOTES:
- 4. ALL WIRES TO BE SECURED WITH CLAMP 10495 OR 10497 OR WIRE TIE 8343 OR 108046 EVERY 600MM, USE SCREW G67-XX-XXX OR G56-XX-XXX AS APPROPRIATE FOR INSTALLATION.
  - 3 SEE WIRING INSTALLATION TV/DVD FOR ADDITIONAL INFORMATION.
  - 2 WIRE ROUTES THRU FLOOR IN THIS AREA.
  - 1 WIRE ROUTED IN SIDEWALL

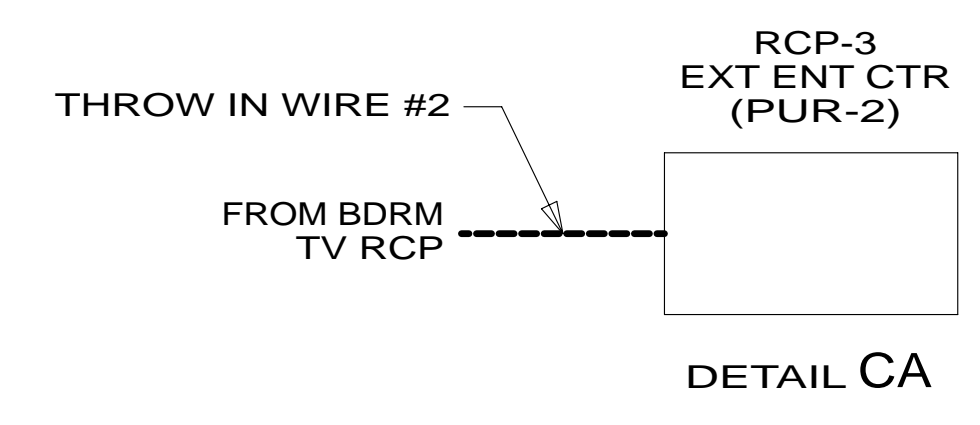
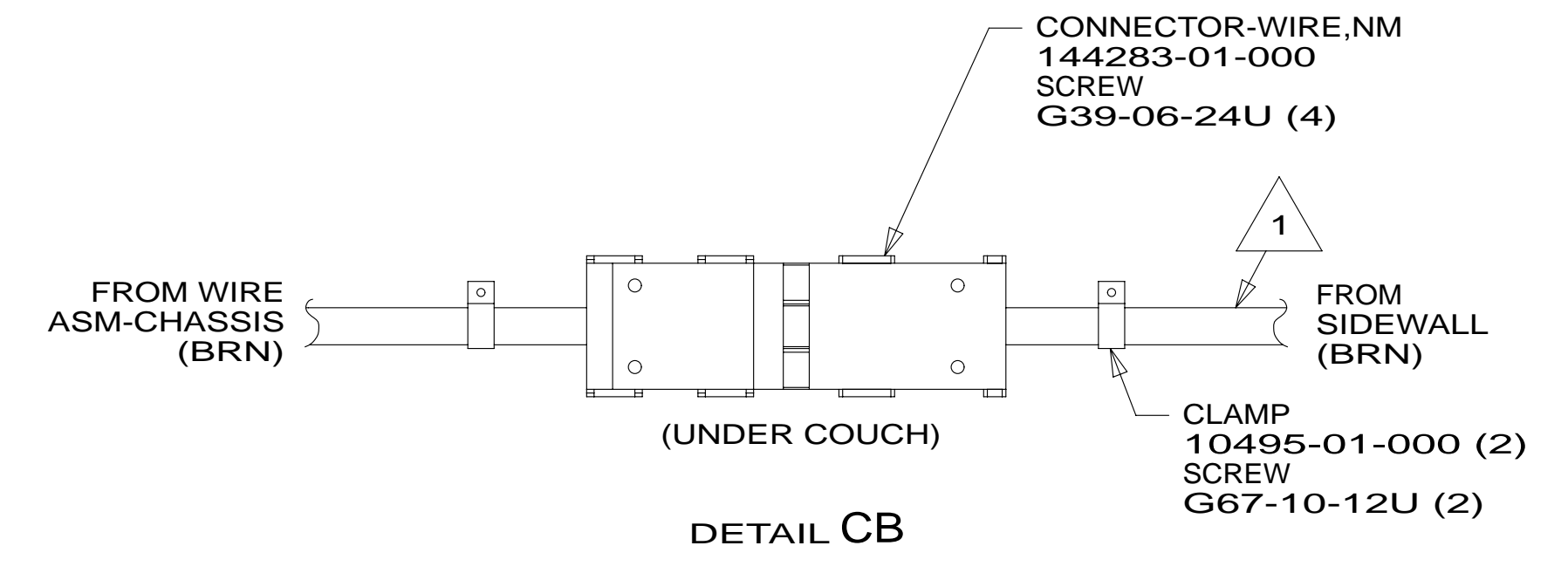
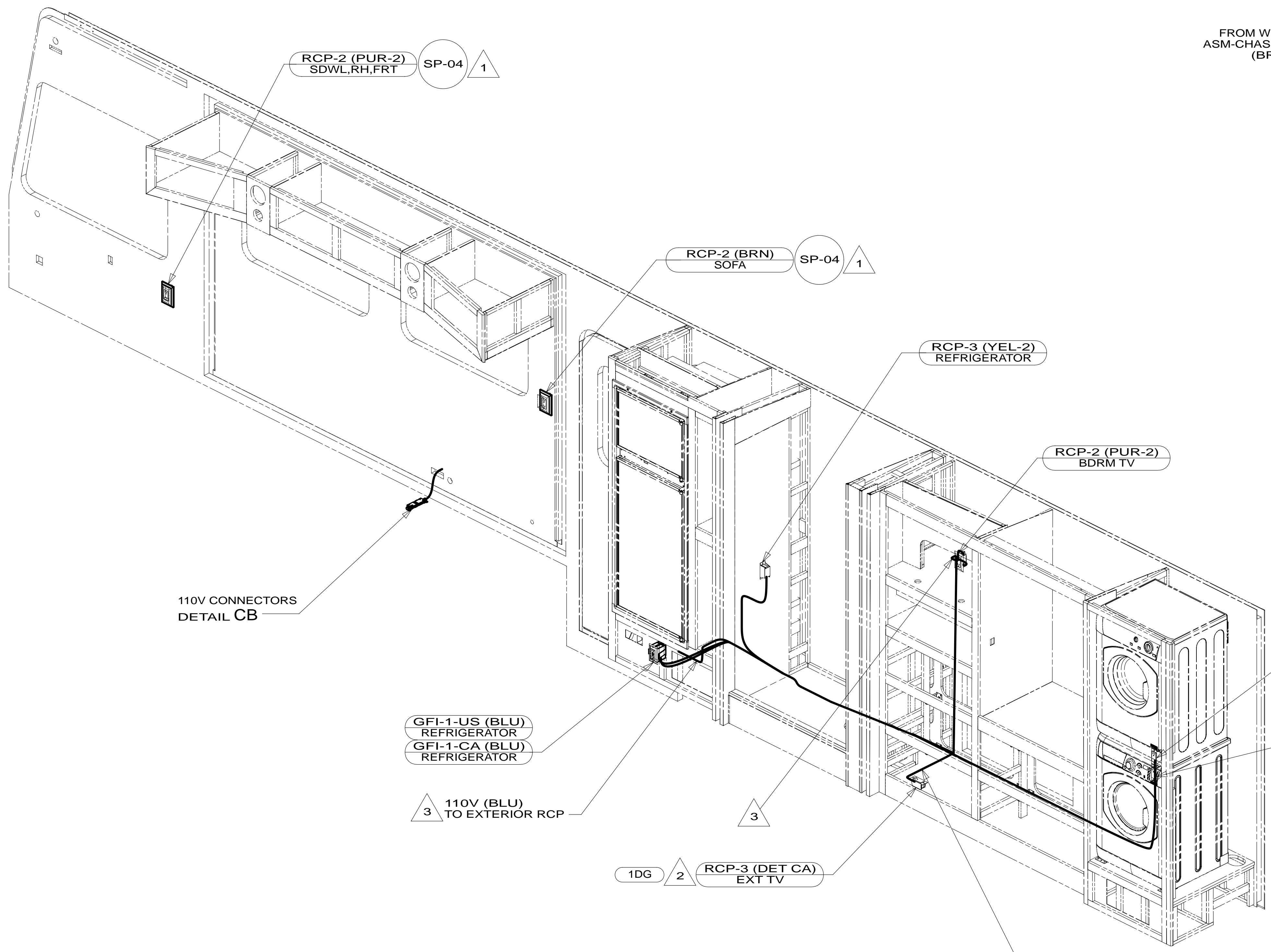
- 14A FIREPLACE-ELECTRIC WITHOUT
- 14C FIREPLACE-ELECTRIC
- 265 CODES/STANDARDS-CSA/CMVSS
- 1B1 CODES/STANDARDS USA

FIRST USED	
<b>14 D35G</b>	
DO NOT SCALE DRAWING	
TITLE: <b>WIRING INSTL-BODY, 110V</b>	
SHEET 2	PART NO <b>186484</b> REV
18-Jun-2014	

FOR ELECTRICAL TORQUE SPECIFICATIONS SEE DWG NO. 128783-01-000

FOR ELECTRICAL CALLOUTS SEE DWG NO. 121339-01-000

\* 186484 \*



4. ALL WIRES TO BE SECURED WITH CLAMP 10495 OR 10497 OR WIRE TIE 8343 OR 108046 EVERY 600MM, USE SCREW G67-XX-XXX OR G56-XX-XXX AS APPROPRIATE FOR INSTALLATION.
- 3 WIRES ROUTE THRU FLOOR IN THIS AREA.
- 2 SEE LOAD CENTER/ATS INSTALLATION FOR ADDITIONAL INFORMATION.
- 1 WIRE ROUTED IN SIDEWALL.

NOTES:

- 21M WASHER/DRYER PREP
- 1DG EXT ENTERTAIN CTR W/TV & CD
- 265 CODES/STANDARDS-CSA/CMVSS
- 1B1 CODES/STANDARDS USA

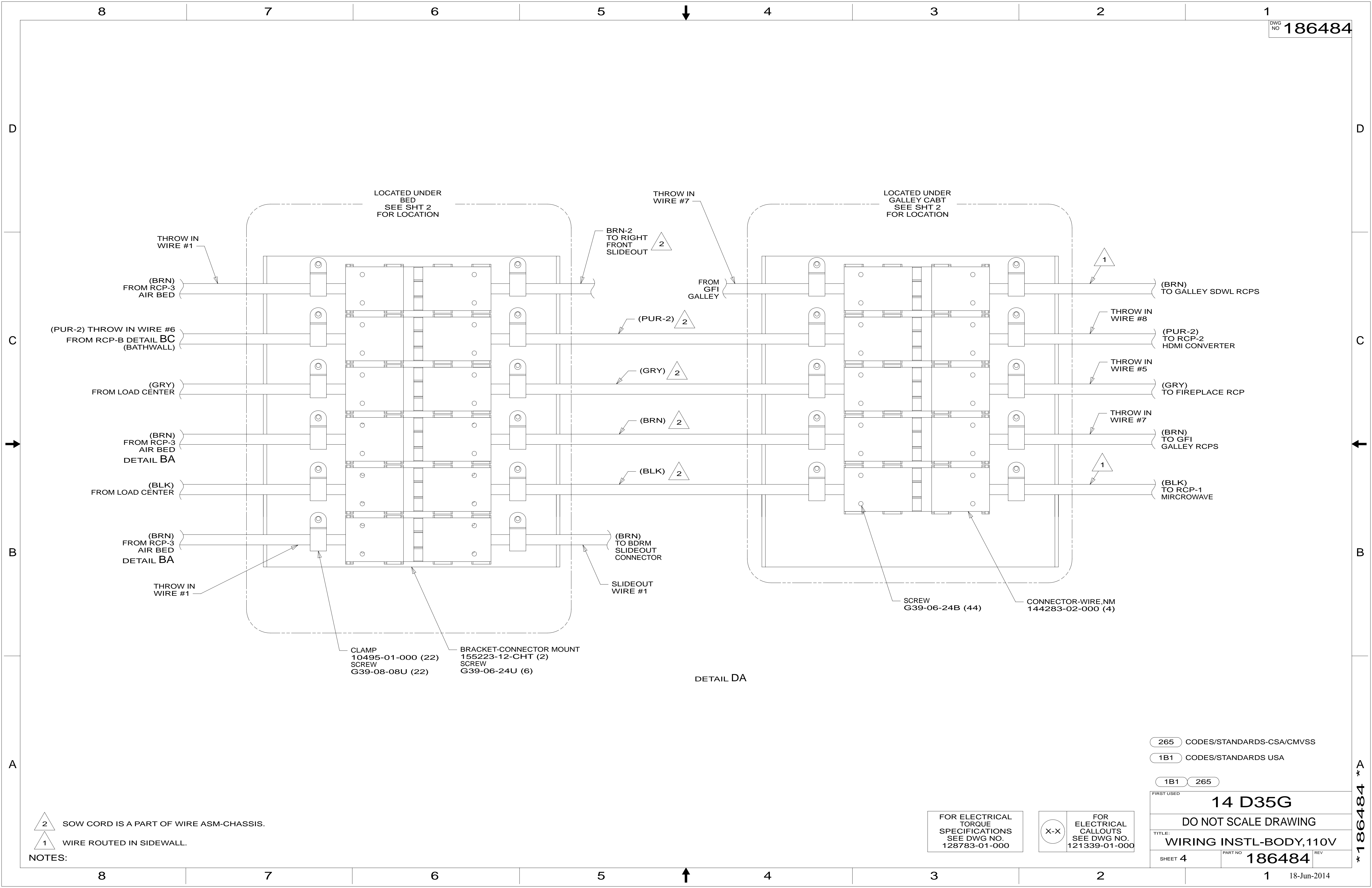
FIRST USED	
<b>14 D35G</b>	
DO NOT SCALE DRAWING	
TITLE: <b>WIRING INSTL-BODY,110V</b>	
SHEET 3	PART NO <b>186484</b> REV
18-Jun-2014	

FOR ELECTRICAL TORQUE SPECIFICATIONS SEE DWG NO. 128783-01-000

FOR ELECTRICAL CALLOUTS SEE DWG NO. 121339-01-000

\* 186484 \*





2 SOW CORD IS A PART OF WIRE ASM-CHASSIS.  
 1 WIRE ROUTED IN SIDEWALL.

NOTES:

DETAIL DA

265 CODES/STANDARDS-CSA/CMVSS  
 1B1 CODES/STANDARDS USA

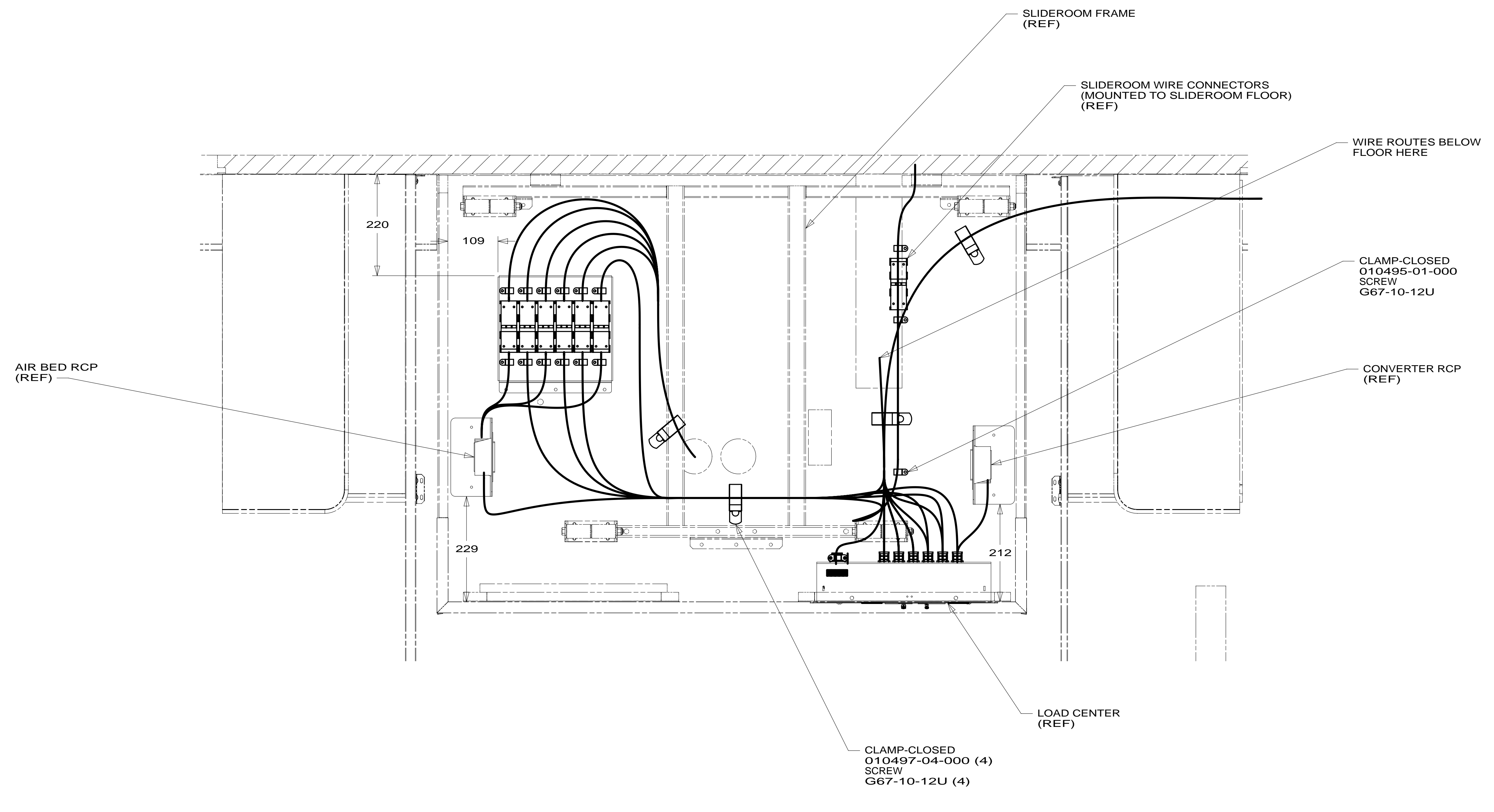
1B1 265

FIRST USED	<b>14 D35G</b>	
<b>DO NOT SCALE DRAWING</b>		
<b>TITLE: WIRING INSTL-BODY, 110V</b>		
SHEET 4	PART NO <b>186484</b>	REV

FOR ELECTRICAL TORQUE SPECIFICATIONS SEE DWG NO. 128783-01-000

FOR ELECTRICAL CALLOUTS SEE DWG NO. 121339-01-000

\* 186484 \* A



VIEW EA

265 CODES/STANDARDS-CSA/CMVSS

1B1 CODES/STANDARDS USA

1B1 265

FIRST USED **14 D35G**

**DO NOT SCALE DRAWING**

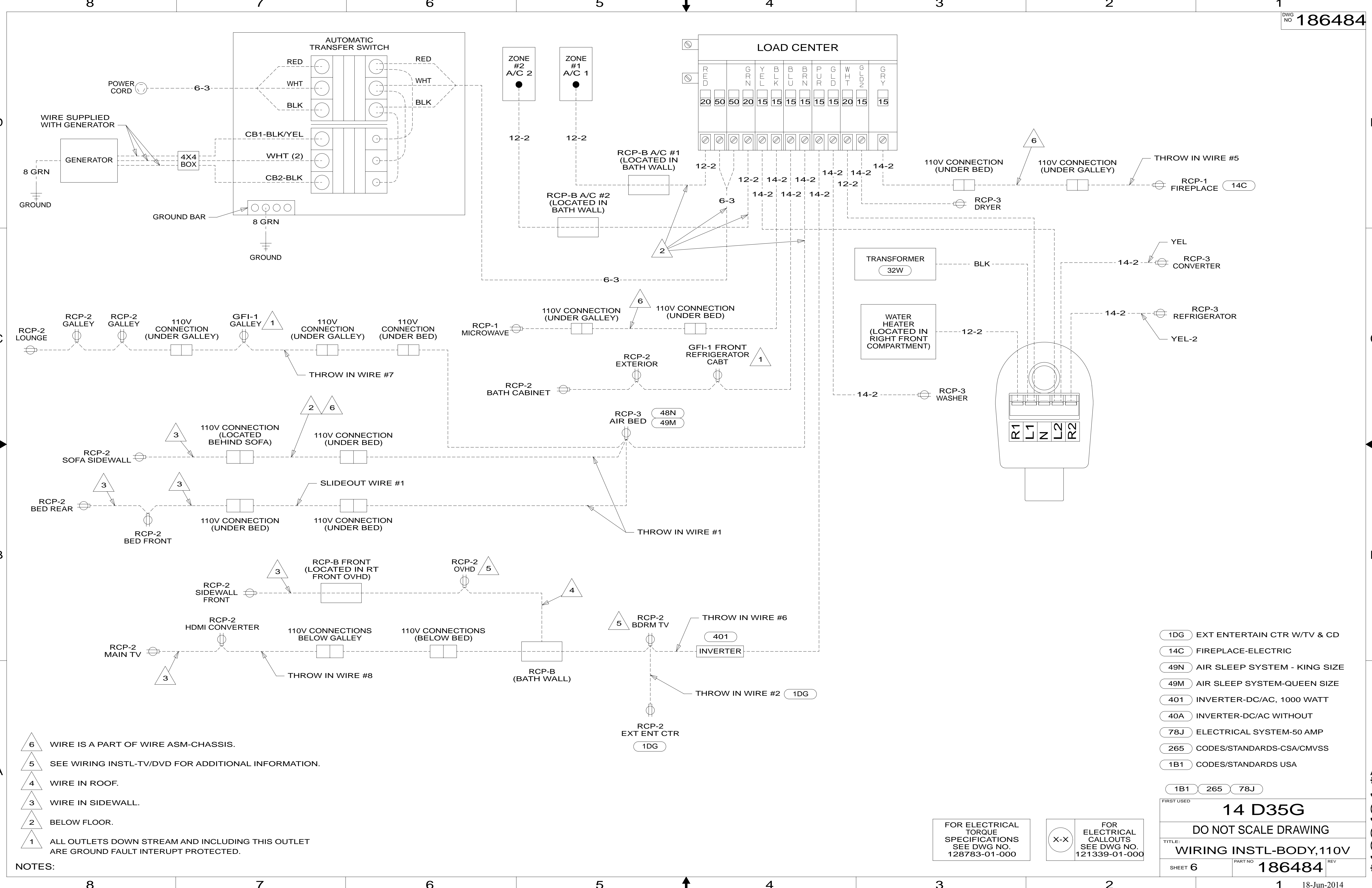
TITLE: **WIRING INSTL-BODY, 110V**

SHEET 5 PART NO **186484** REV

FOR ELECTRICAL TORQUE SPECIFICATIONS SEE DWG NO. 128783-01-000

X-X FOR ELECTRICAL CALLOUTS SEE DWG NO. 121339-01-000

\* 186484 \* A



- NOTES:
- 6 WIRE IS A PART OF WIRE ASM-CHASSIS.
  - 5 SEE WIRING INSTL-TV/DVD FOR ADDITIONAL INFORMATION.
  - 4 WIRE IN ROOF.
  - 3 WIRE IN SIDEWALL.
  - 2 BELOW FLOOR.
  - 1 ALL OUTLETS DOWN STREAM AND INCLUDING THIS OUTLET ARE GROUND FAULT INTERRUPT PROTECTED.

- 1DG EXT ENTERTAIN CTR W/TV & CD
- 14C FIREPLACE-ELECTRIC
- 49N AIR SLEEP SYSTEM - KING SIZE
- 49M AIR SLEEP SYSTEM-QUEEN SIZE
- 401 INVERTER-DC/AC, 1000 WATT
- 40A INVERTER-DC/AC WITHOUT
- 78J ELECTRICAL SYSTEM-50 AMP
- 265 CODES/STANDARDS-CSA/CMVSS
- 1B1 CODES/STANDARDS USA

FIRST USED	<b>14 D35G</b>
<b>DO NOT SCALE DRAWING</b>	
<b>TITLE: WIRING INSTL-BODY, 110V</b>	
SHEET 6	PART NO <b>186484</b> REV

FOR ELECTRICAL TORQUE SPECIFICATIONS SEE DWG NO. 128783-01-000

FOR ELECTRICAL CALLOUTS SEE DWG NO. 121339-01-000

\* 186484 \*