



DANGER

Danger of electrical shock, burns or death. Always remove all power sources before attempting any repair, service or diagnostic work. Power can be present from shore power, generator, inverter or battery. All power sources must be disabled and secured before performing any service.



CAUTION

If you lack the skills, tools or equipment to perform diagnostic or repair work leave such work to an authorized Winnebago Industries dealer or other qualified shop.

8	7
DRAWING NO.	SHEET
186430-01	1,2,3
186430-02	1,2,4
186430-03	1,2,5
186430-04	1,2,6

		6	5	4	3	2	1
		524M	524J	524G	524V		
GROUND	6-G	136145-02-016	136145-02-020	136145-02-020	136145-02-028		
GENERATOR CABLE ASM	UL	164957-02-042	164957-07-030	164957-02-042	164957-02-042	33F	
	CA	164957-04-042	164957-08-030	164957-04-042	164957-04-042	33F	
THROW IN WIRE #1	1B1		136131-05-016	136131-19-024			
	265		136134-05-016	136134-19-024			
THROW IN WIRE #2	1B1		136131-19-040	136131-19-003	136131-19-003		
	265		136134-19-040	136134-19-003	136134-19-003		
THROW IN WIRE #3	1B1			136131-19-006	136131-19-009		
	265			136134-19-006	136134-19-009		
THROW IN WIRE #4	1B1	136131-03-006	136131-03-006	136131-03-006	136131-03-006	401	
	265	136134-03-006	136134-03-006	136134-03-006	136134-03-006	401	
THROW IN WIRE #5	1B1	136131-19-004	136131-19-004	136131-19-004	136131-19-004	401	
	265	136134-19-004	136134-19-004	136134-19-004	136134-19-004	401	
RED	1B1	136135-07-075	136135-07-042	136135-07-063	136135-07-047		
	265	136136-07-075	136136-07-042	136136-07-063	136136-07-047		
YEL	1B1	136131-05-024	136131-05-028	136131-05-033	136131-05-035		
	265	136134-05-024	136134-05-028	136134-05-033	136134-05-035		
BLK	1B1	136135-06-020	136135-06-013	136135-06-028	136135-06-019		
	265	136136-06-020	136136-06-013	136136-06-028	136136-06-019		
BLK-2	1B1	136135-22-024	136135-22-029	136135-22-015	136135-22-050		
	265	136136-22-024	136136-22-029	136136-22-015	136136-22-050		
BRN	1B1	136131-03-033	136131-03-035	136131-03-037	136131-03-027		
	265	136134-03-033	136134-03-035	136134-03-037	136134-03-027		
BRN-2	1B1	136131-19-115	136131-19-045	136131-19-146	136131-19-160		
	265	136134-19-115	136134-19-045	136134-19-146	136134-19-160		
BLU	1B1	136131-02-151	136131-02-123	136131-02-171	136131-02-176		
	265	136134-02-151	136134-02-123	136134-02-171	136134-02-176		
WHT	1B1	136135-09-026	136135-09-025	136135-09-028	136135-09-050		
	265	136136-09-026	136136-09-025	136136-09-028	136136-09-050		
MAIN	1B1	136137-01-057	136137-01-034	136137-01-051	136137-01-052		
	265	136138-01-057	136138-01-034	136138-01-051	136138-01-052		
SLIDEOUT WIRE #1				136151-19-013			
SLIDEOUT WIRE #2		136151-19-042		136151-19-035	136151-19-035		

RELEASE	REV/DATE	DWG NO	186430
REV ZONE	REVISION RECORD	DATE	DFT-ORIG

- INVERTER-DC/AC, 1000 WATT
- DINETTE L-SHAPED-SECTIONAL
- ENTERTAINMENT CENTER-CABOVER
- GEN-3.5 KW ONAN DIESEL
- CODES/STANDARDS-CSA/CMVSS
- CODES/STANDARDS USA

WINNEBAGO COPYRIGHT 2013 WINNEBAGO INDUSTRIES, INC.

UNSPECIFIED TOLERANCES ARE:
 WHOLE DIM (X) : 3
 ONE-PLACE (X.X) : 1.5
 TWO-PLACE (X.XX) : 0.50
 ANGLE : 1'

THIRD ANGLE PROJECTION

DO NOT SCALE DRAWING REFER TO ES0018 FOR FASTENER TIGHTENING GUIDELINES

TITLE: **LOAD CENTER/ATS ASM**

SHEET **1** OF **6** PART NO **186430** REV

REF: **1** 17-Dec-2013

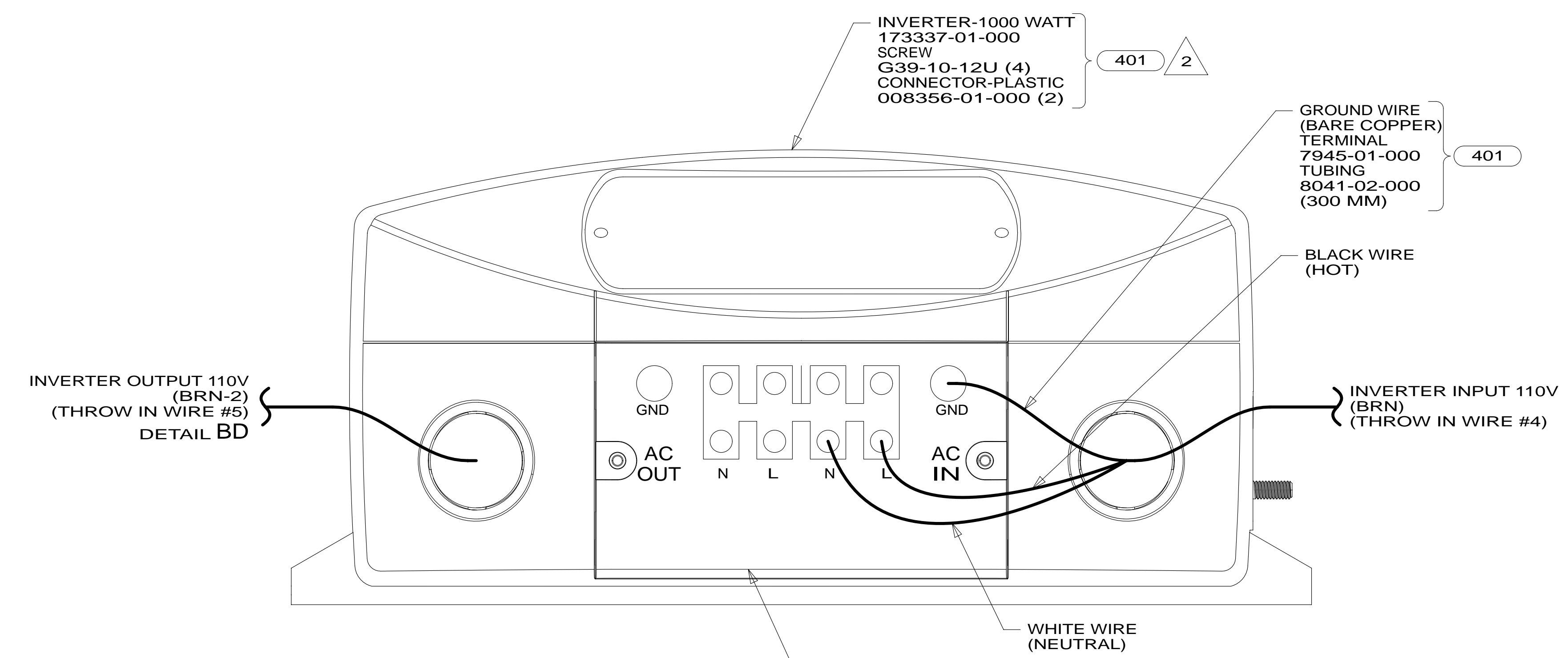
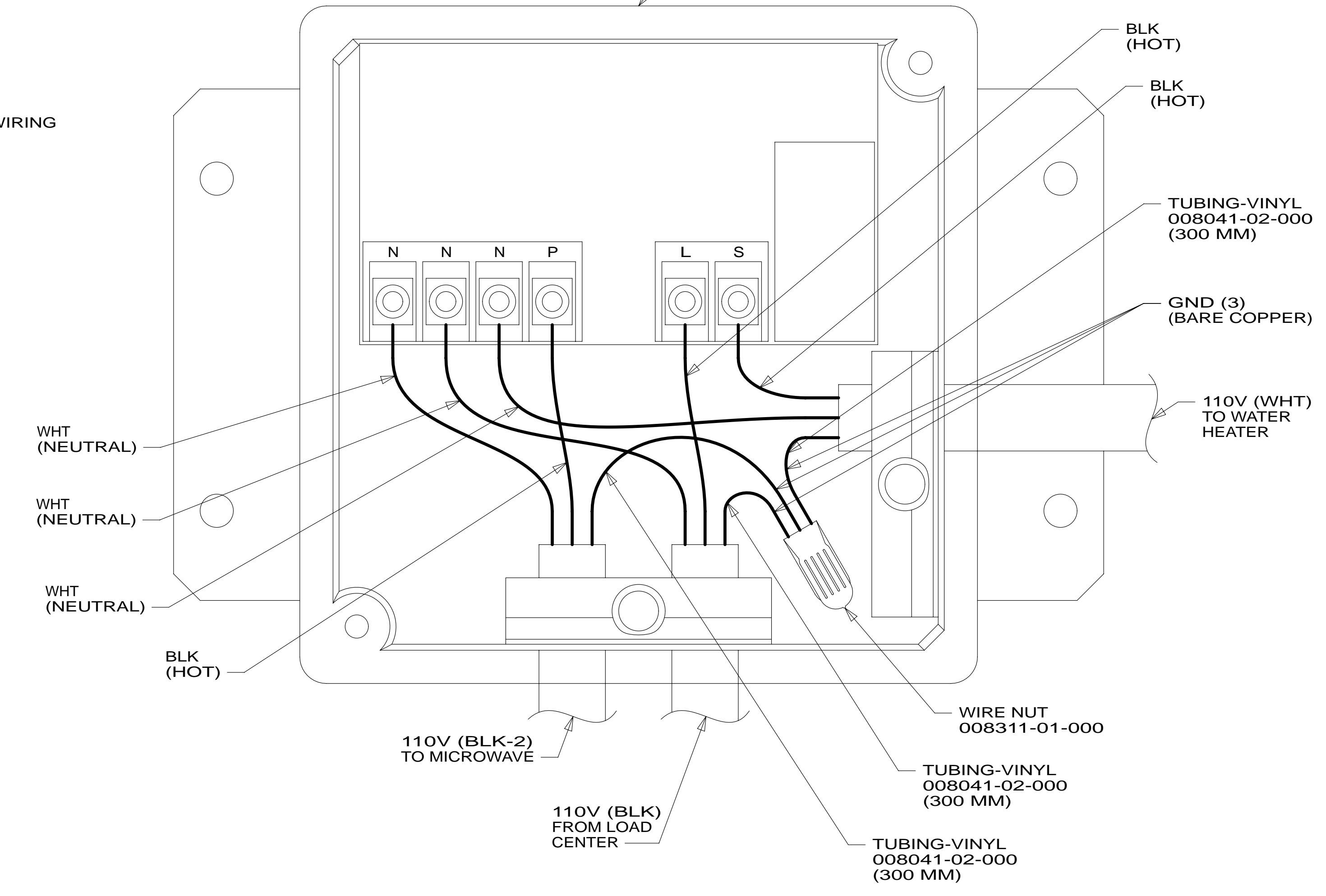
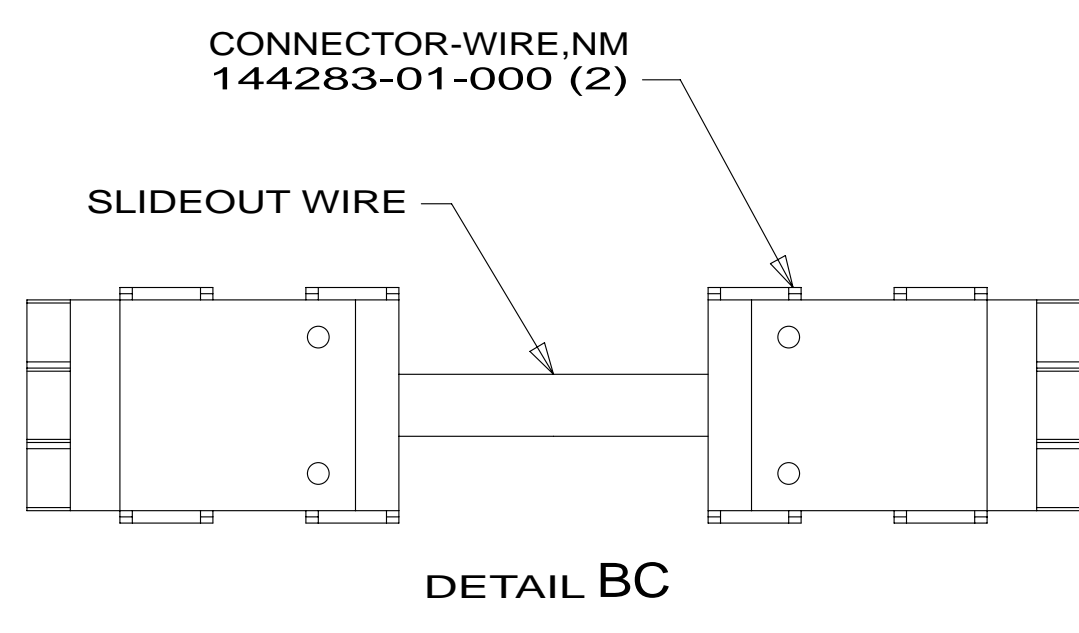
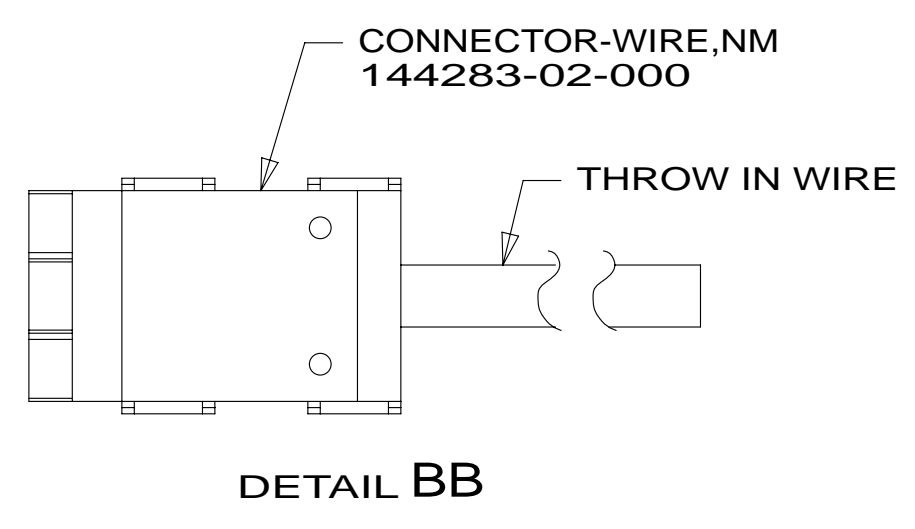
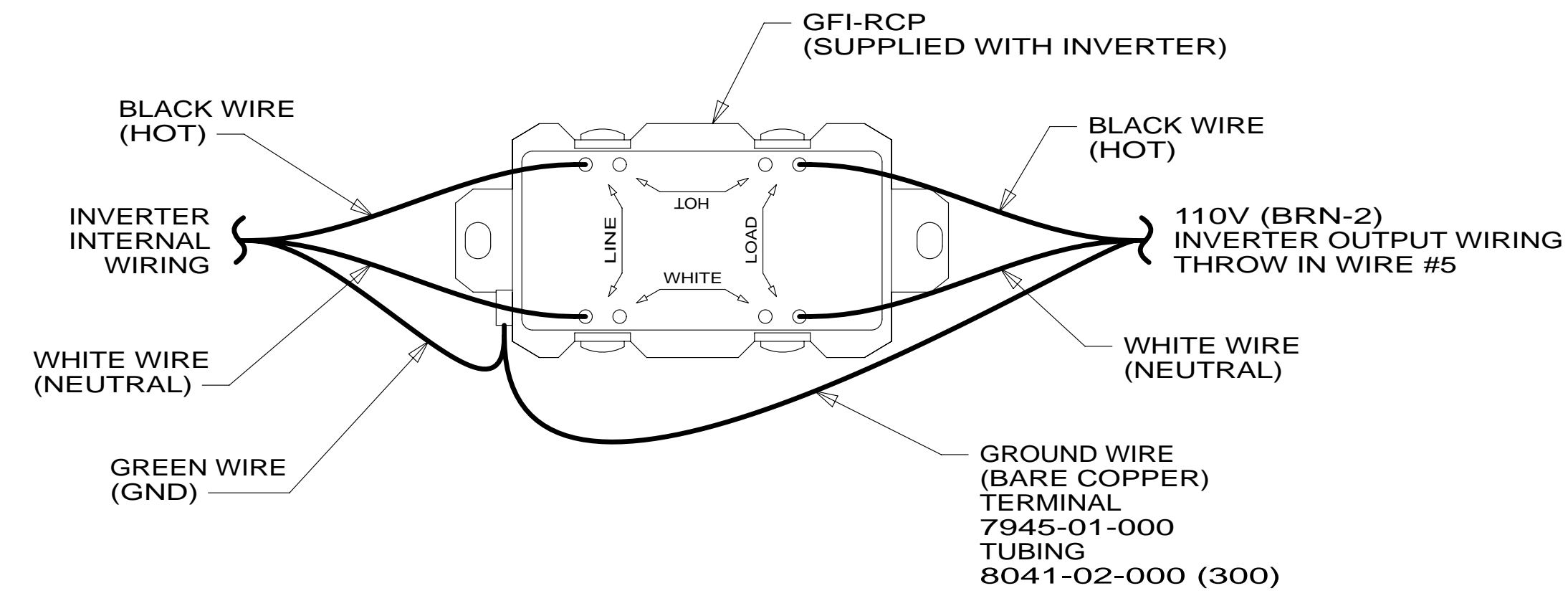
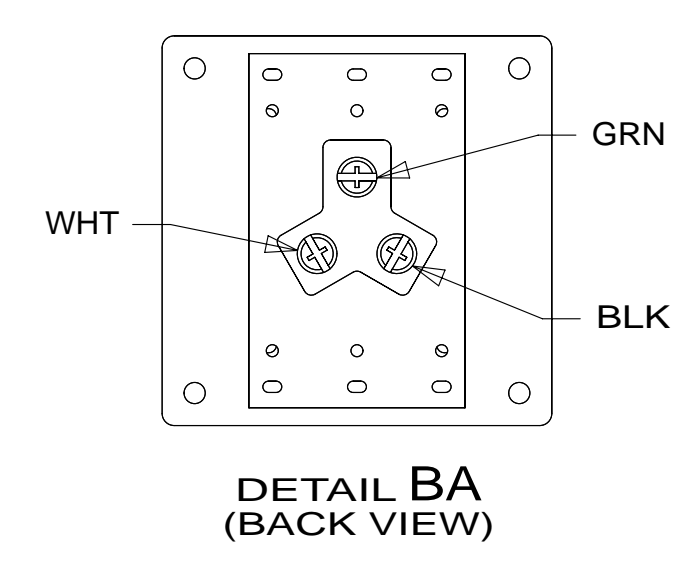
FOR CONNECTOR INSTALLTION SEE DETAIL BB.
 NOT USED WITH
 FOR CONNECTOR INSTALLATION SE DETAIL BC.

1. ALL GROUND WIRES TO BE COVERED WITH TUBING 8041-02-000.

FOR ELECTRICAL TORQUE SPECIFICATIONS SEE DWG NO. 128783-01-000

FOR ELECTRICAL CALLOUTS SEE DWG NO. 121339-01-000

* 186430 *



2 INVERTER SUPPLIED WITH REMOTE PANEL. SEND PANEL TO MANUFACTURING LINE.

1. ALL GROUND WIRES TO BE COVERED WITH TUBING 8041-02-000.

NOTES:

FOR ELECTRICAL TORQUE SPECIFICATIONS SEE DWG NO. 128783-01-000

FOR ELECTRICAL CALLOUTS SEE DWG NO. 121339-01-000

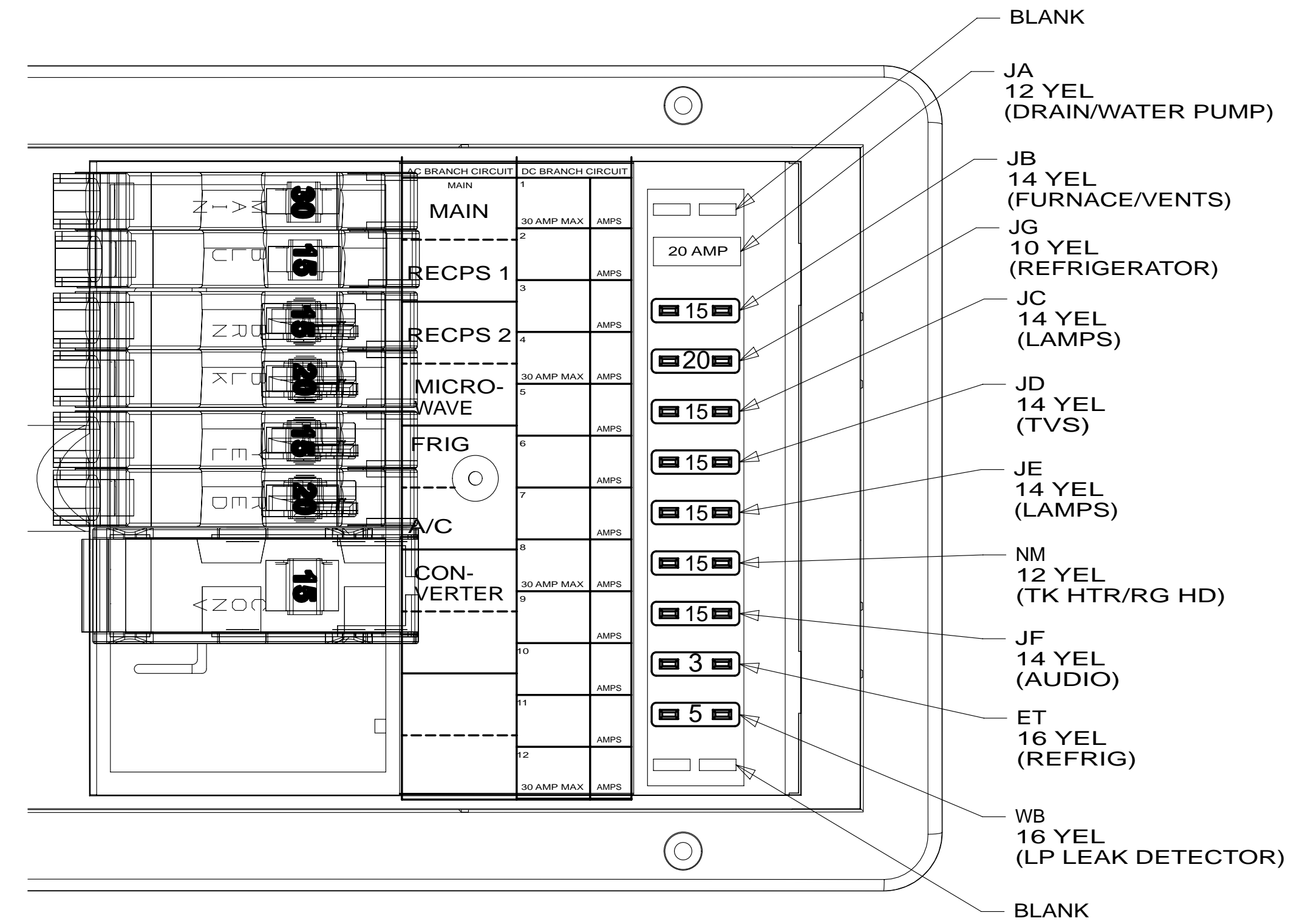
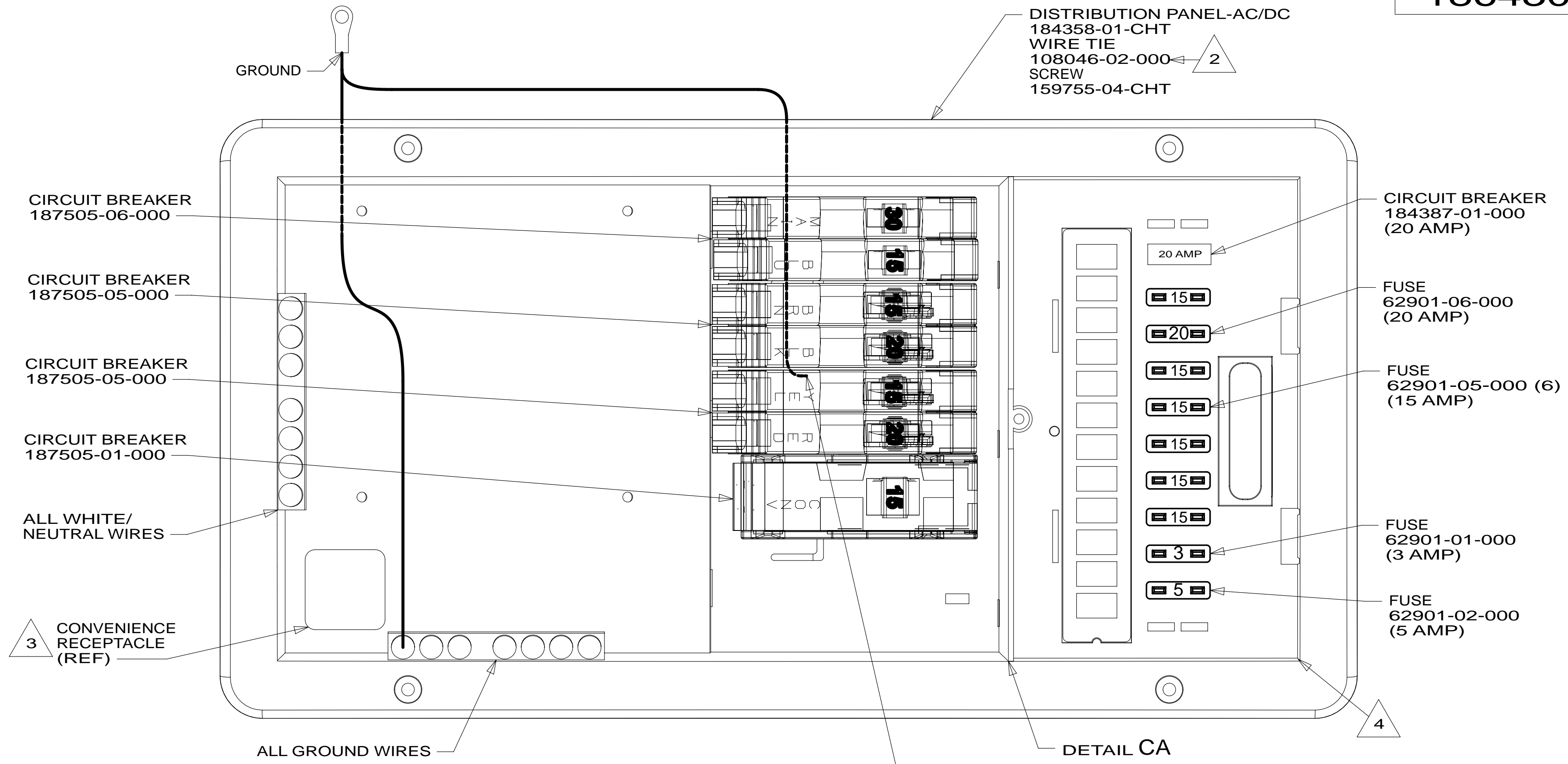
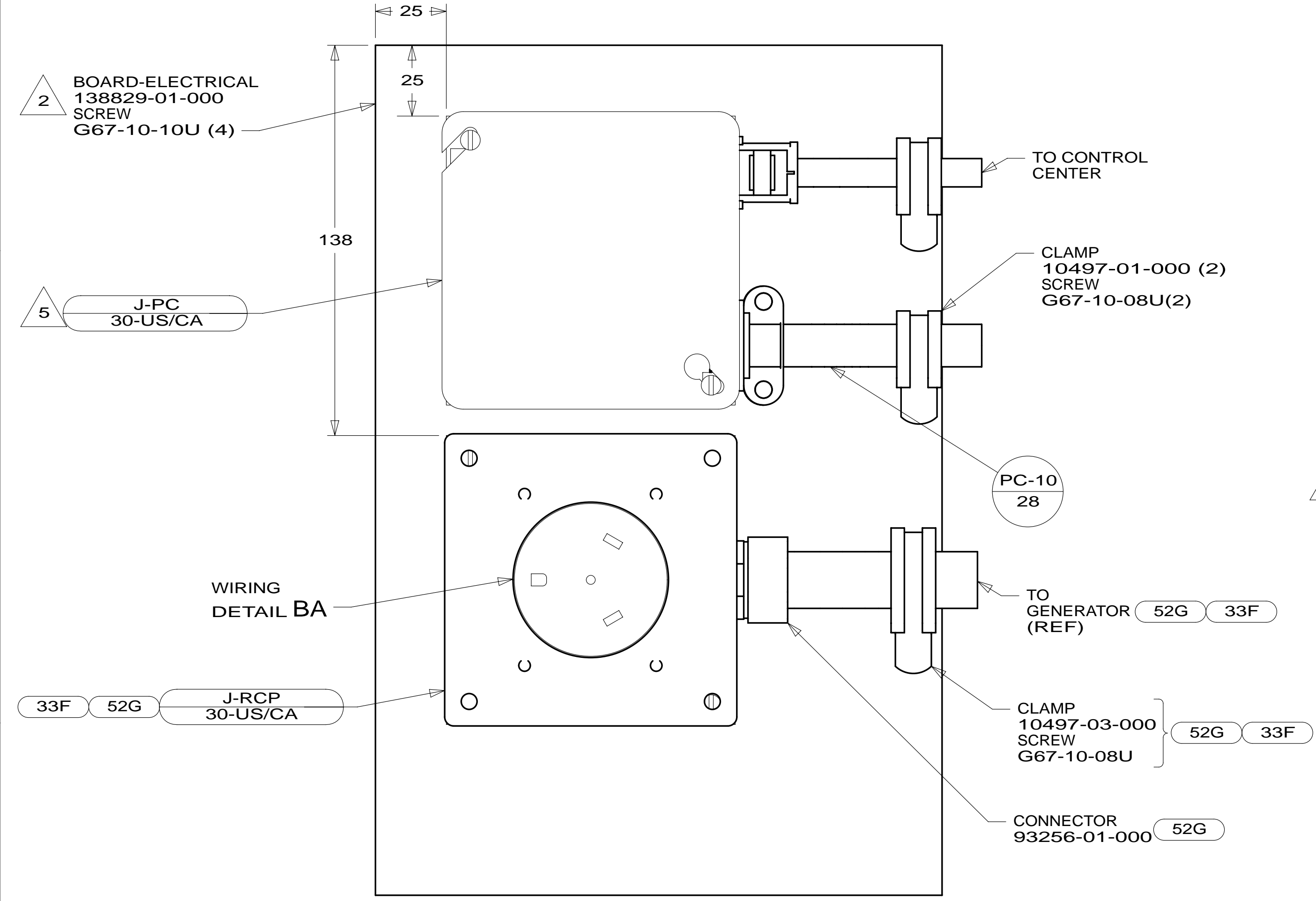
- 401 INVERTER-DC/AC, 1000 WATT
- 265 CODES/STANDARDS-CSA/CMVSS
- 1B1 CODES/STANDARDS USA

1B1 265
14 500-SERIES

DO NOT SCALE DRAWING

TITLE: **LOAD CENTER/ATS ASM**

SHEET 2 PART NO **186430** REV



- NOTES:**
- 5 CONNECT BLK TO BLK, WHT TO WHT, AND GRNDS TO GRNDS.
 - 4 SEE WIRING INSTL-BODY,12V FOR ADDITIONAL INFORMATION.
 - 3 CONNECT BLACK WIRE FROM CONVENIENCE RECEPTACLE TO DEDICATED CIRCUIT BREAKER.
 - 2 ATTACH TO UNUSED SCREW HOLE ON BACK SIDE OF PANEL TO SECURE WIRES.
 - 1. ALL GROUND WIRES TO BE COVERED WITH TUBING 8041-02-000.

FOR ELECTRICAL TORQUE SPECIFICATIONS SEE DWG NO. 128783-01-000

FOR ELECTRICAL CALLOUTS SEE DWG NO. 121339-01-000

- 33F GEN-3.5 KW ONAN DIESEL
- 52G GEN-3.6KW ONAN LP MICROQUIET
- 265 CODES/STANDARDS-CSA/CMVSS
- 1B1 CODES/STANDARDS USA

FIRST USED

14 500-SERIES

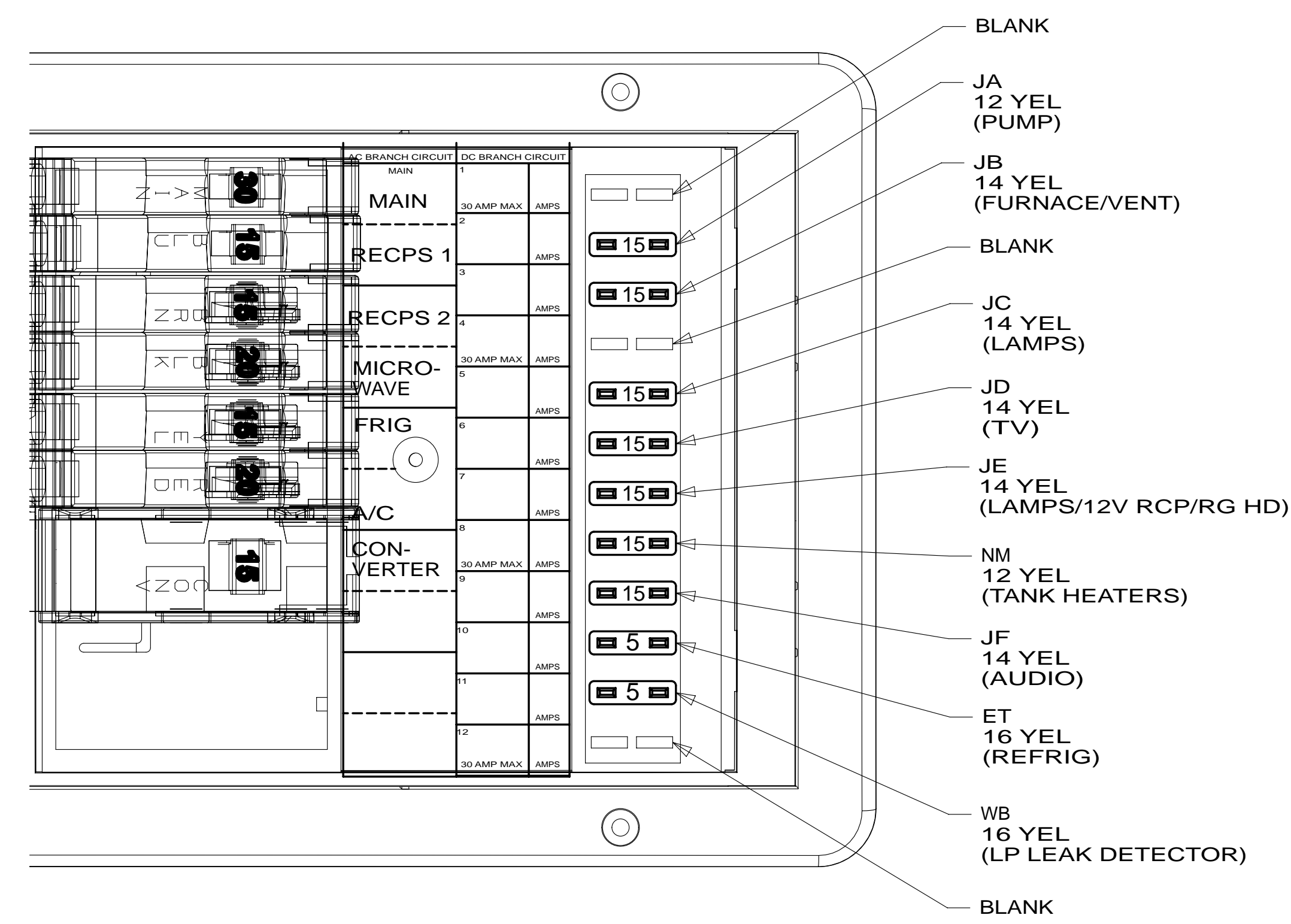
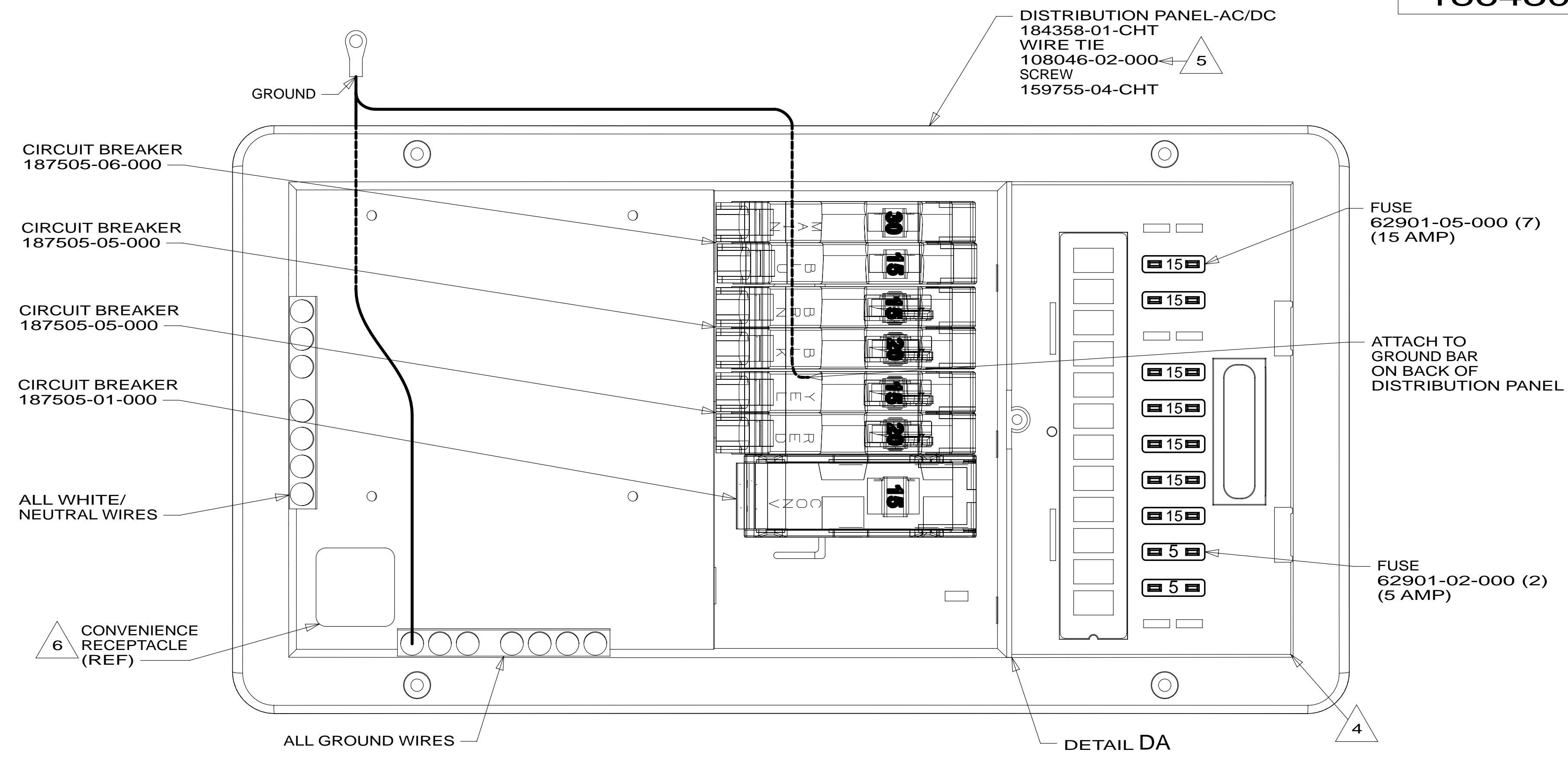
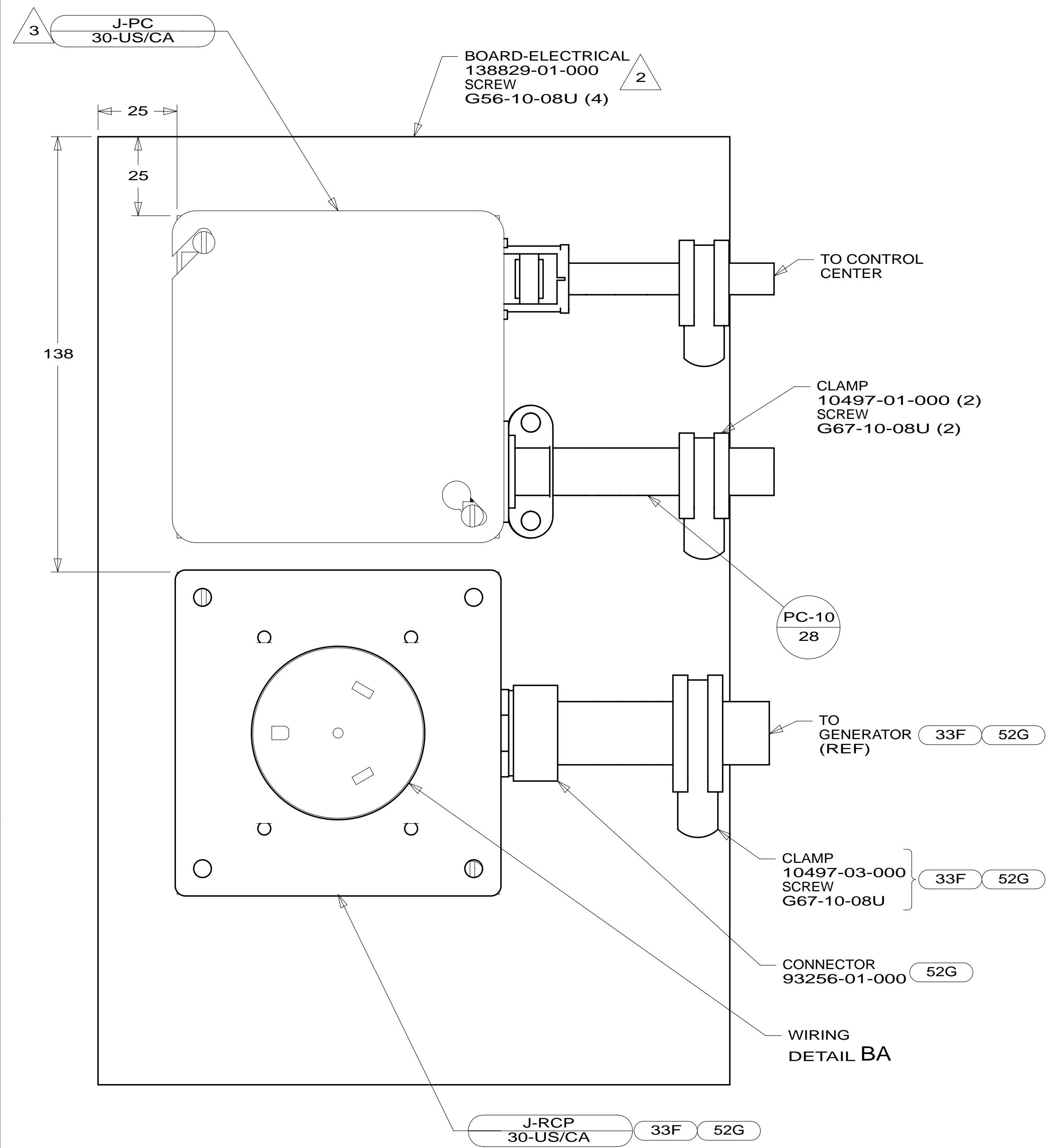
DO NOT SCALE DRAWING

TITLE: **LOAD CENTER/ATS ASM**

SHEET 3 PART NO **186430** REV

17-Dec-2013

* 186430 * A



- 33F** GEN-3.5 KW ONAN DIESEL
- 52G** GEN-3.6KW ONAN LP MICROQUIET
- 265** CODES/STANDARDS-CSA/CMVSS
- 1B1** CODES/STANDARDS USA

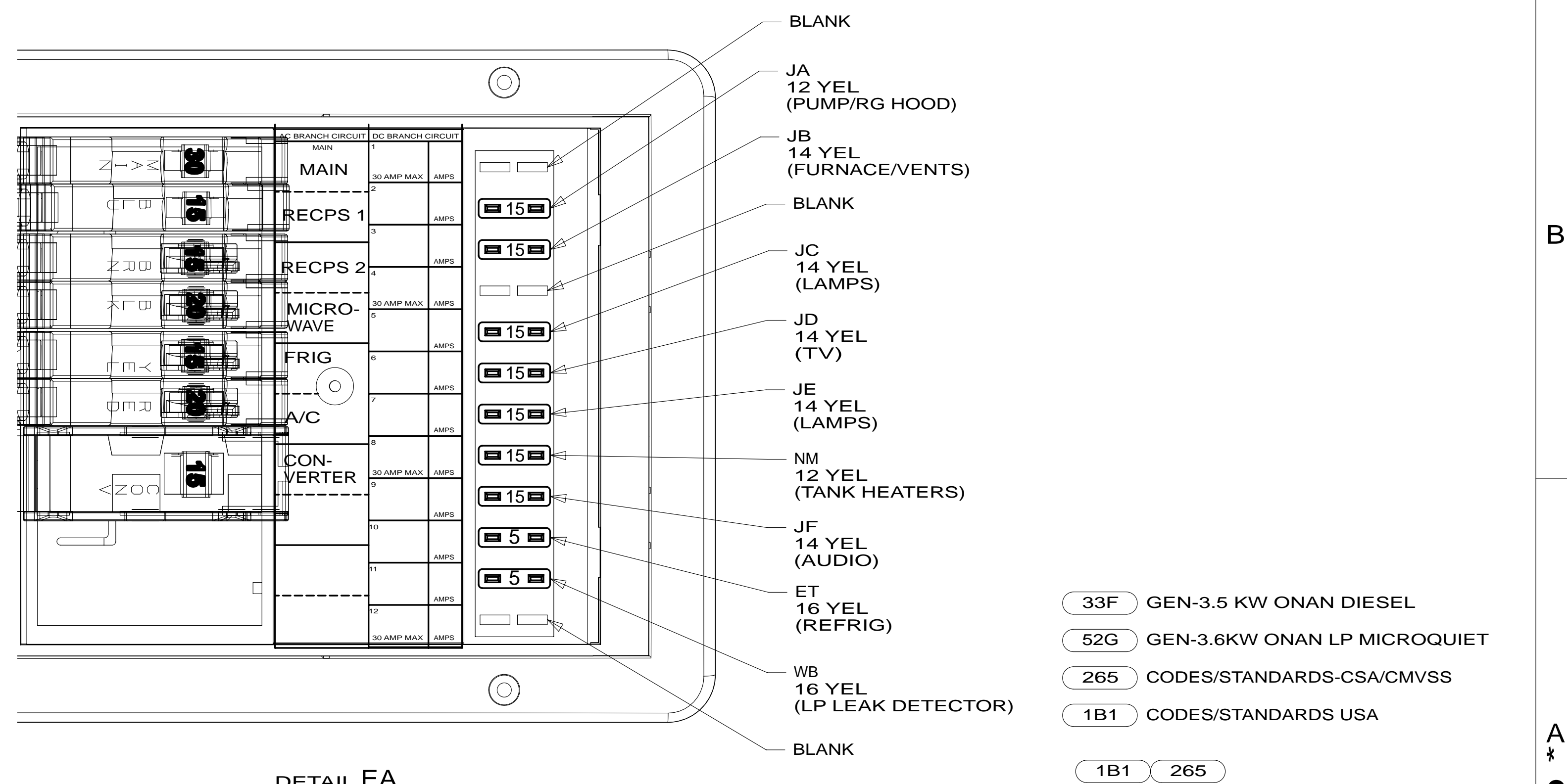
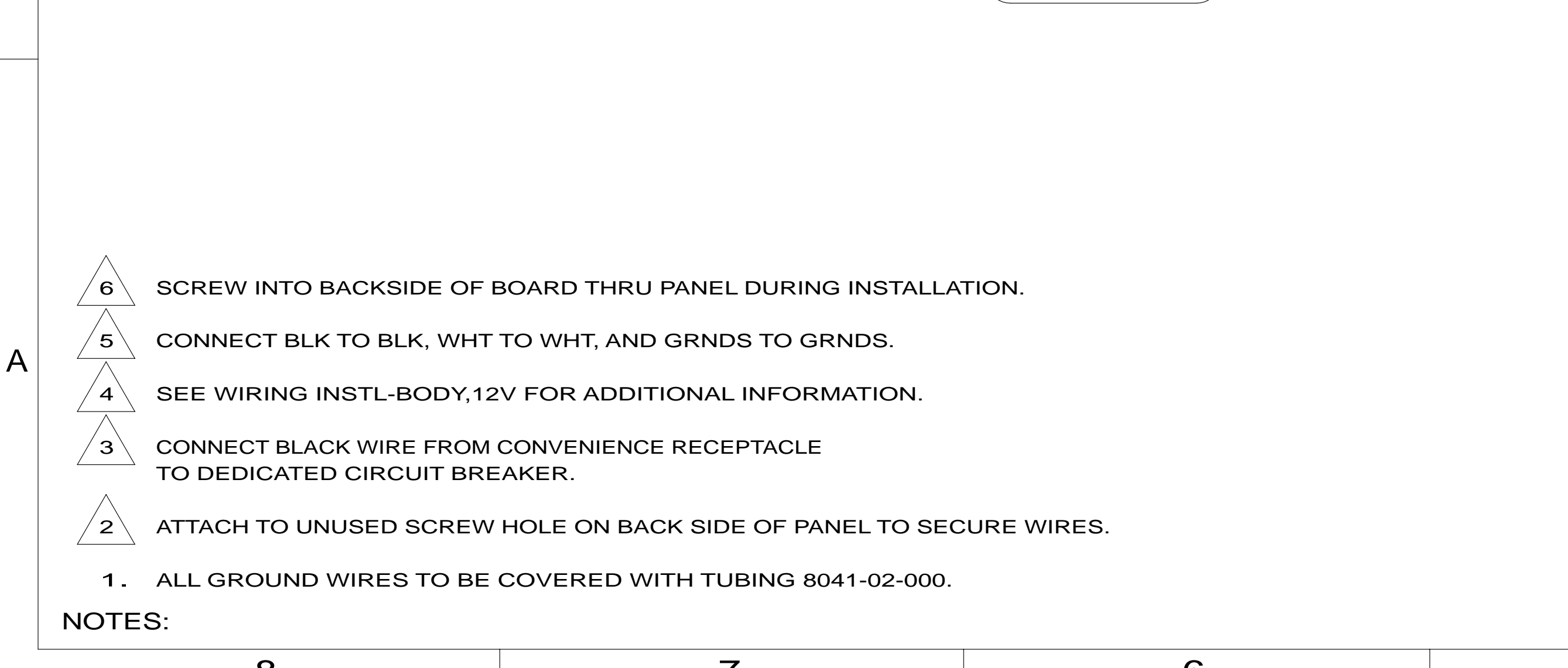
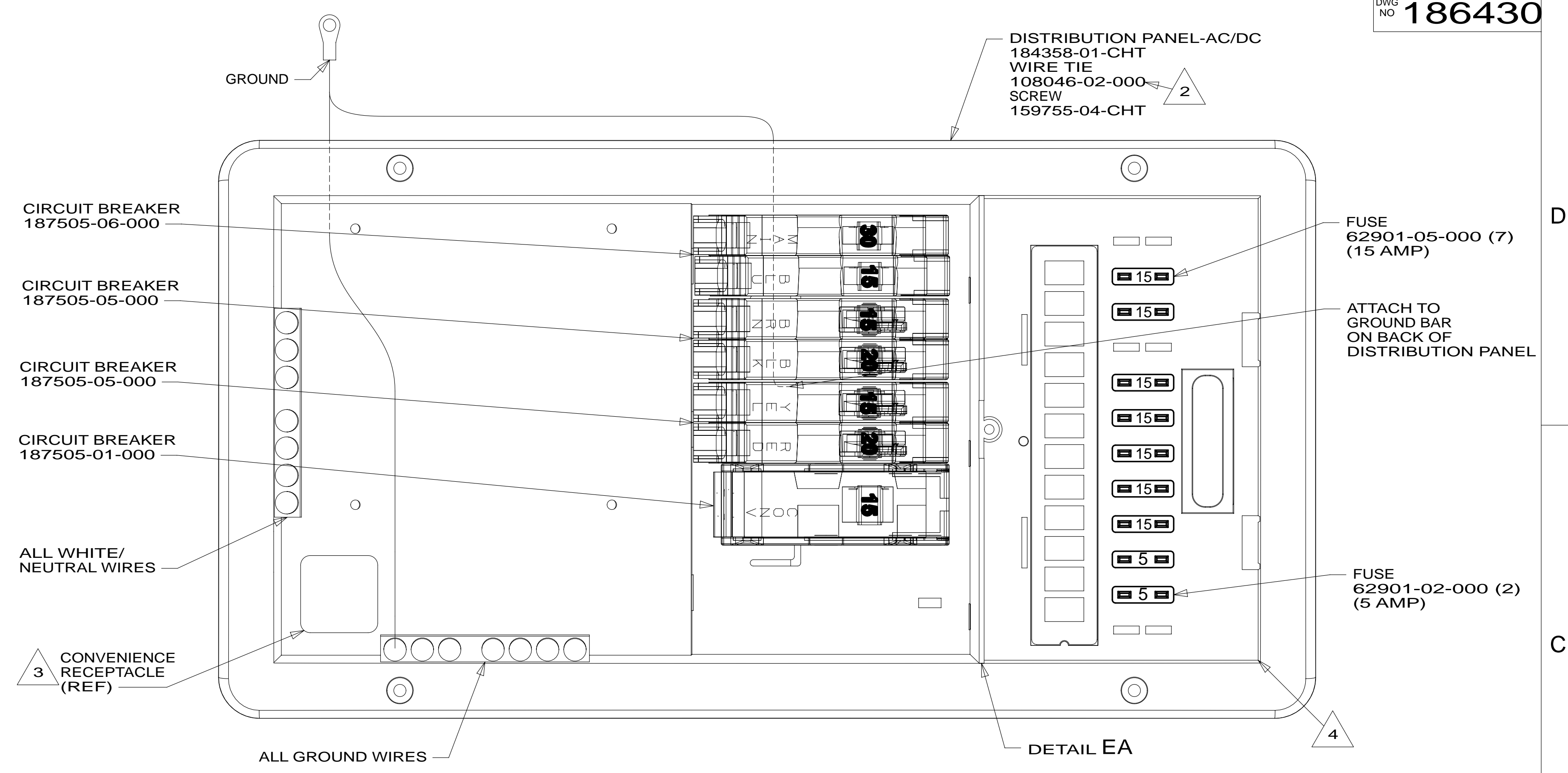
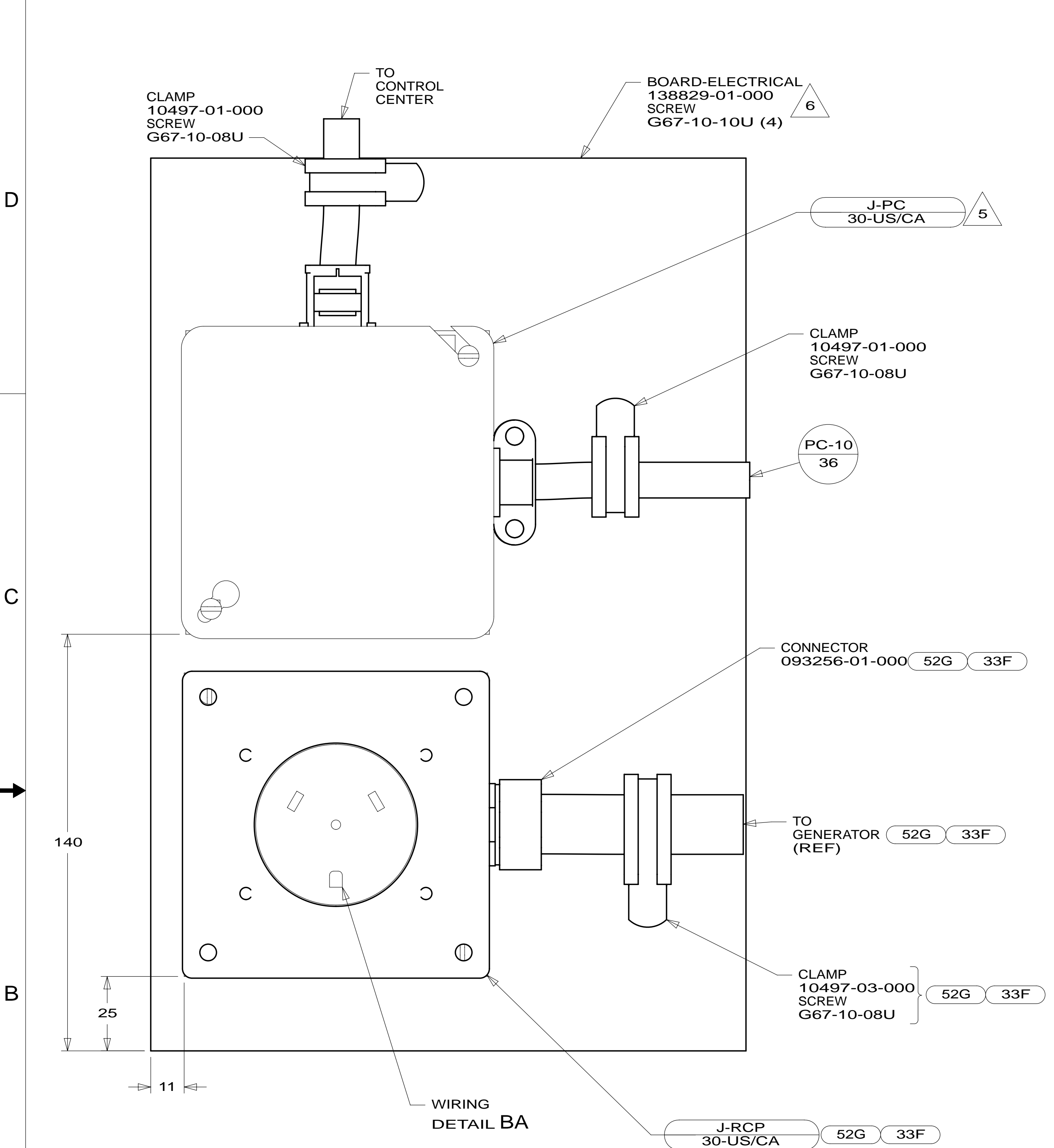
- 6** CONNECT BLACK WIRE FROM CONVENIENCE RECEPTACLE TO DEDICATED CIRCUIT BREAKER.
- 5** ATTACH TO UNUSED SCREW HOLE ON BACK SIDE OF PANEL TO SECURE WIRES.
- 4** SEE WIRING INSTL-BODY,12V FOR ADDITIONAL INFORMATION.
- 3** CONNECT BLK TO BLK, WHT TO WHT, AND GRNDS TO GRNDS.
- 2** SCREW INTO BACKSIDE OF BOARD THRU PANEL DURING INSTALLATION.
- 1.** ALL GROUND WIRES TO BE COVERED WITH TUBING 8041-02-000.

FOR ELECTRICAL TORQUE SPECIFICATIONS SEE DWG NO. 128783-01-000
 FOR ELECTRICAL CALLOUTS SEE DWG NO. 121339-01-000

14 500-SERIES
DO NOT SCALE DRAWING
LOAD CENTER/ATS ASM
186430
 SHEET 4
 17-Dec-2013

* 186430 * A

8 7 6 5 4 3 2 1



- NOTES:
- 6 SCREW INTO BACKSIDE OF BOARD THRU PANEL DURING INSTALLATION.
 - 5 CONNECT BLK TO BLK, WHT TO WHT, AND GRNDS TO GRNDS.
 - 4 SEE WIRING INSTL-BODY,12V FOR ADDITIONAL INFORMATION.
 - 3 CONNECT BLACK WIRE FROM CONVENIENCE RECEPTACLE TO DEDICATED CIRCUIT BREAKER.
 - 2 ATTACH TO UNUSED SCREW HOLE ON BACK SIDE OF PANEL TO SECURE WIRES.
 - 1. ALL GROUND WIRES TO BE COVERED WITH TUBING 8041-02-000.

FOR ELECTRICAL TORQUE SPECIFICATIONS SEE DWG NO. 128783-01-000

X-X

FOR ELECTRICAL CALLOUTS SEE DWG NO. 121339-01-000

- 33F GEN-3.5 KW ONAN DIESEL
- 52G GEN-3.6KW ONAN LP MICROQUIET
- 265 CODES/STANDARDS-CSA/CMVSS
- 1B1 CODES/STANDARDS USA

FIRST USED

14 500-SERIES

DO NOT SCALE DRAWING

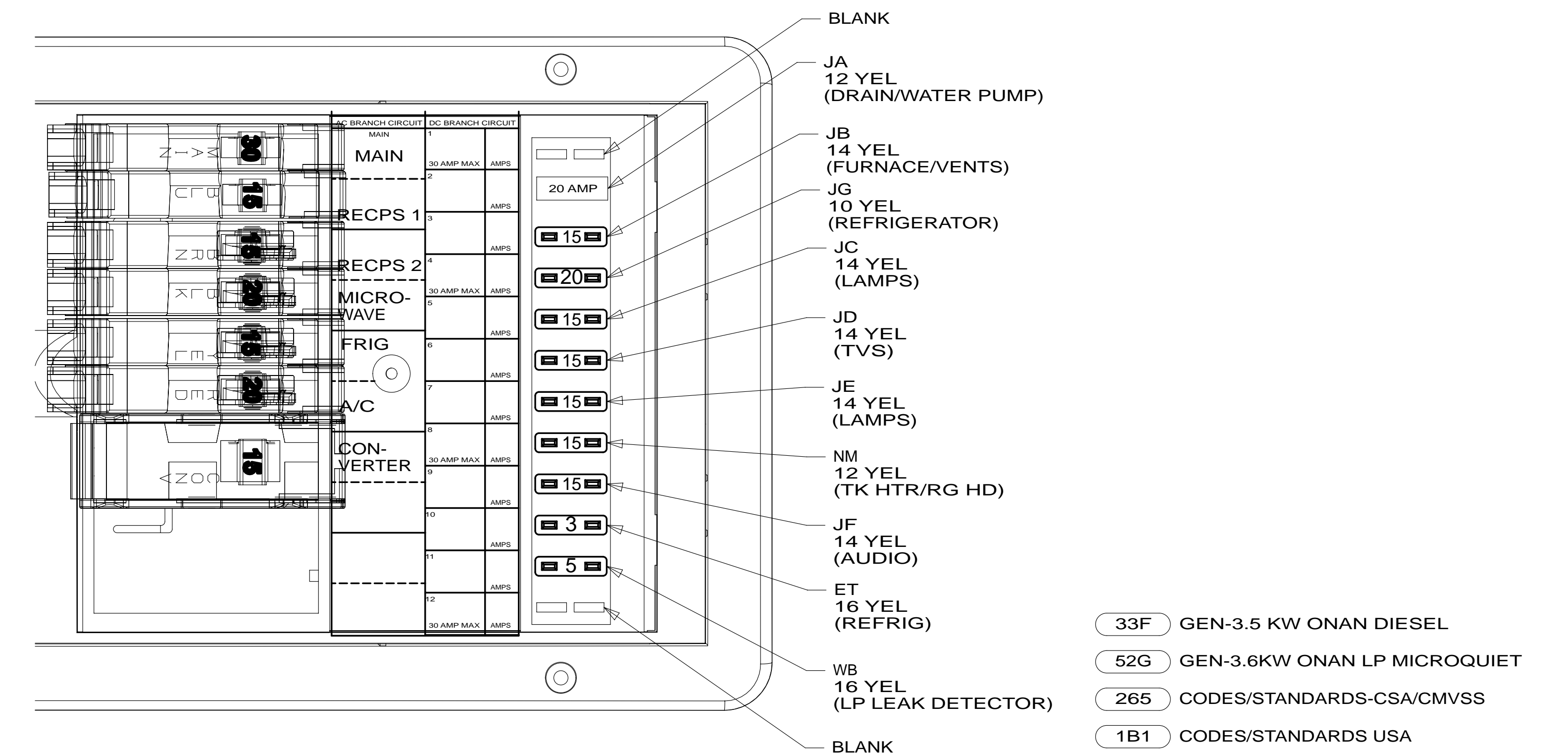
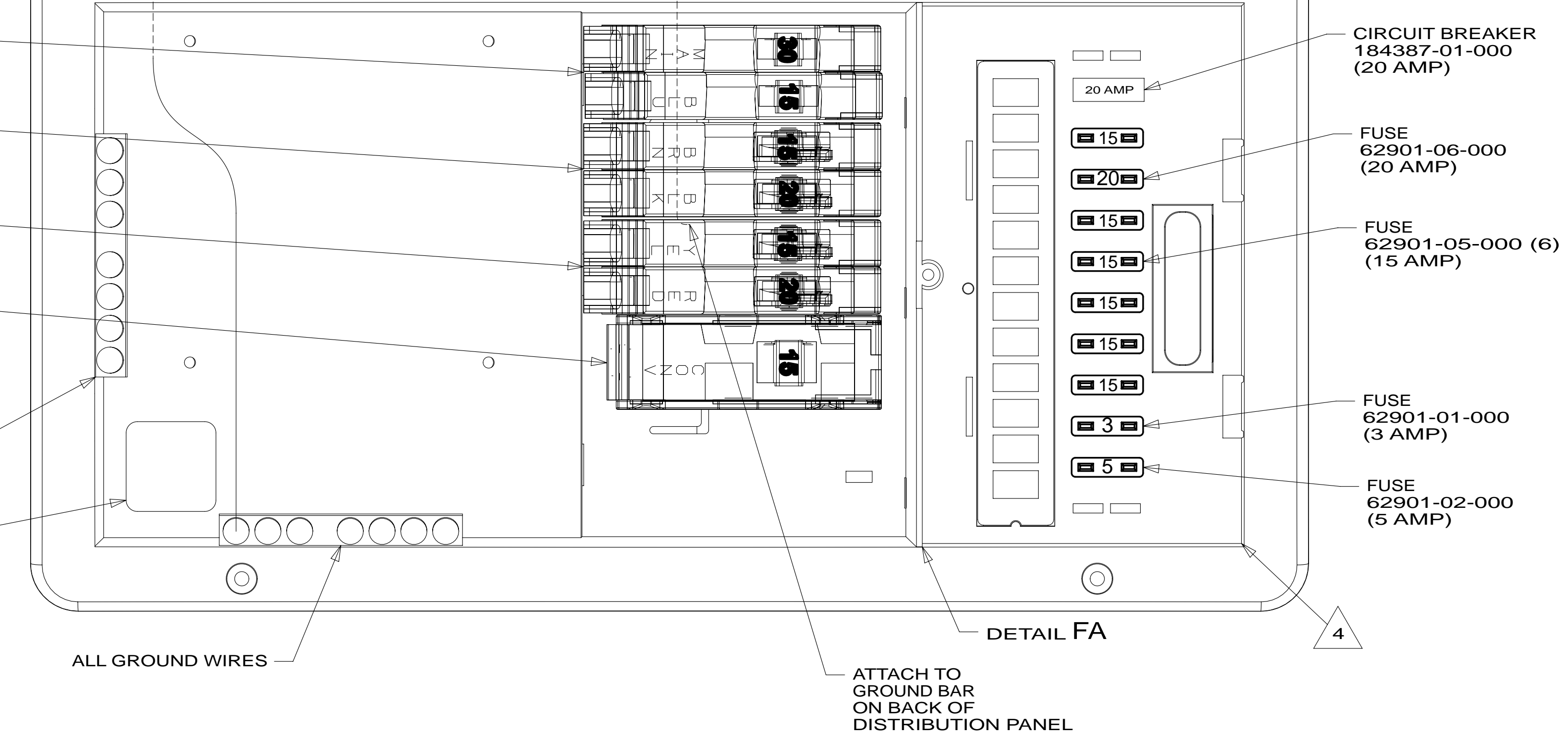
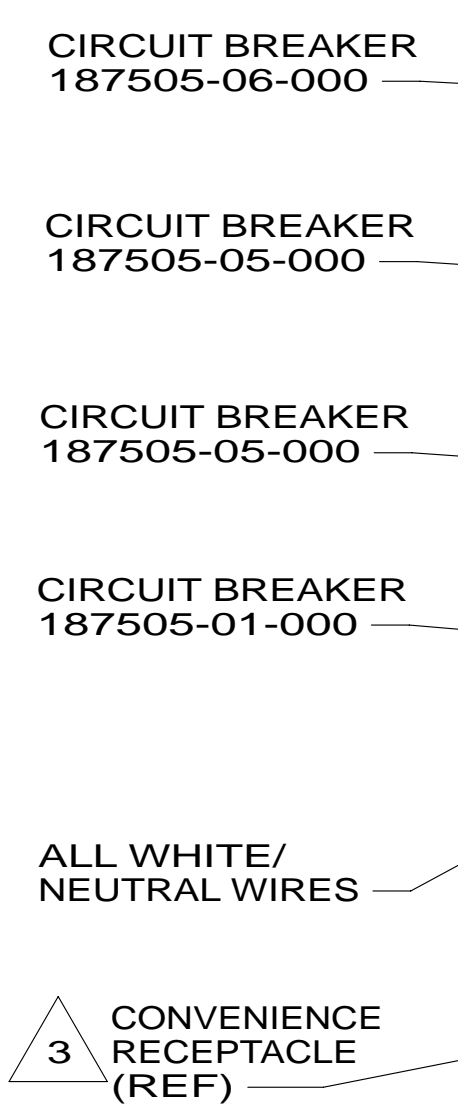
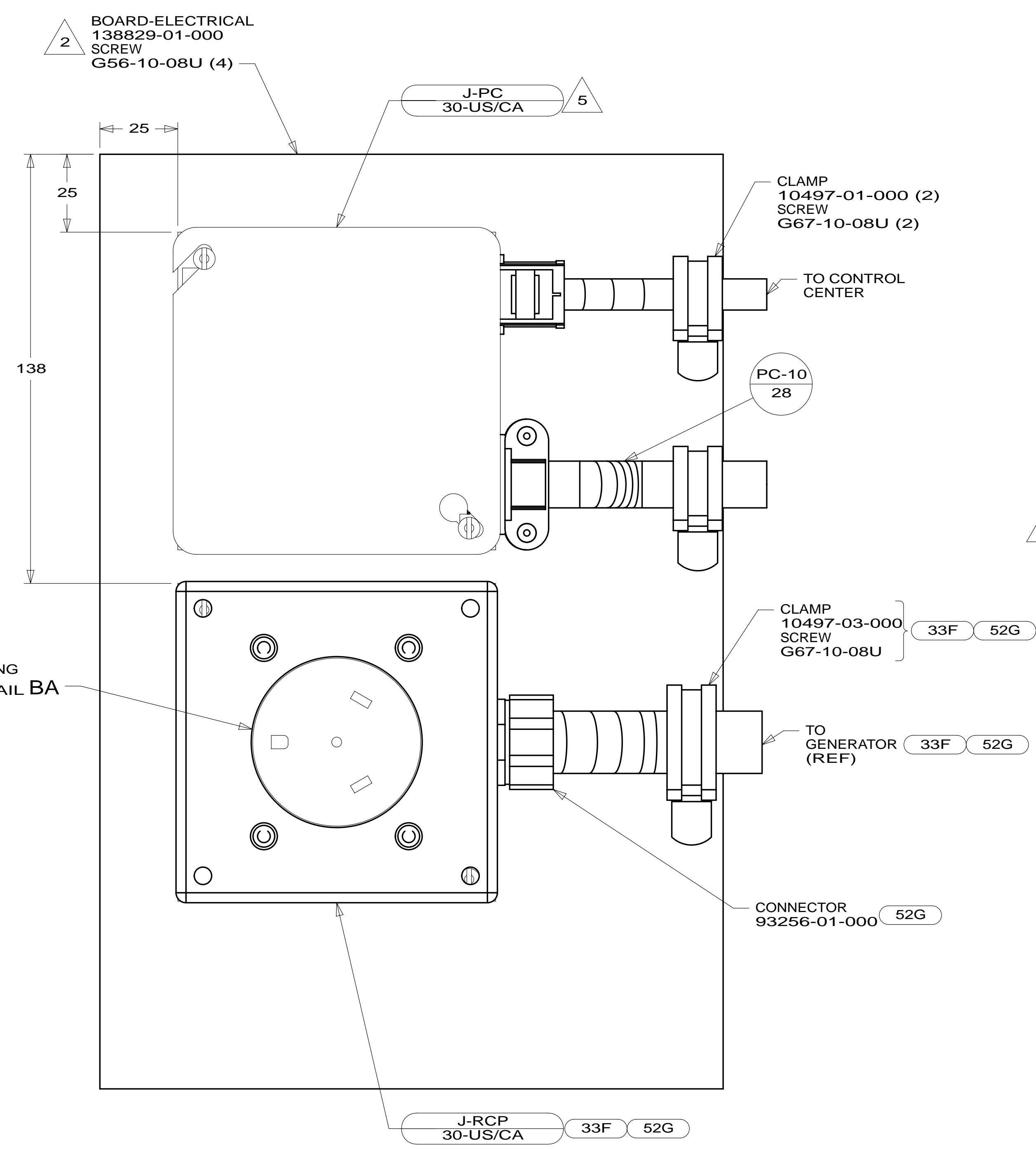
TITLE: **LOAD CENTER/ATS ASM**

SHEET 5 PART NO **186430** REV

17-Dec-2013

8 7 6 5 4 3 2 1

* 186430 * A



- 6 ATTACH TO UNUSED SCREW HOLE ON BACK SIDE OF PANEL TO SECURE WIRES.
- 5 CONNECT BLK TO BLK, WHT TO WHT, AND GRNDS TO GRNDS.
- 4 SEE WIRING INSTL-BODY,12V FOR ADDITIONAL INFORMATION.
- 3 CONNECT BLACK WIRE FROM CONVENIENCE RECEPTACLE TO DEDICATED CIRCUIT BREAKER.
- 2 SCREW INTO BACKSIDE OF BOARD THRU PANEL DURING INSTALLATION.

1. ALL GROUND WIRES TO BE COVERED WITH TUBING 8041-02-000.

FOR ELECTRICAL TORQUE SPECIFICATIONS SEE DWG NO. 128783-01-000

X-X FOR ELECTRICAL CALLOUTS SEE DWG NO. 121339-01-000

- 33F GEN-3.5 KW ONAN DIESEL
- 52G GEN-3.6KW ONAN LP MICROQUIET
- 265 CODES/STANDARDS-CSA/CMVSS
- 1B1 CODES/STANDARDS USA

FIRST USED	
14 500-SERIES	
DO NOT SCALE DRAWING	
TITLE: LOAD CENTER/ATS ASM	
SHEET 6	PART NO 186430 REV

* 186430 * A