



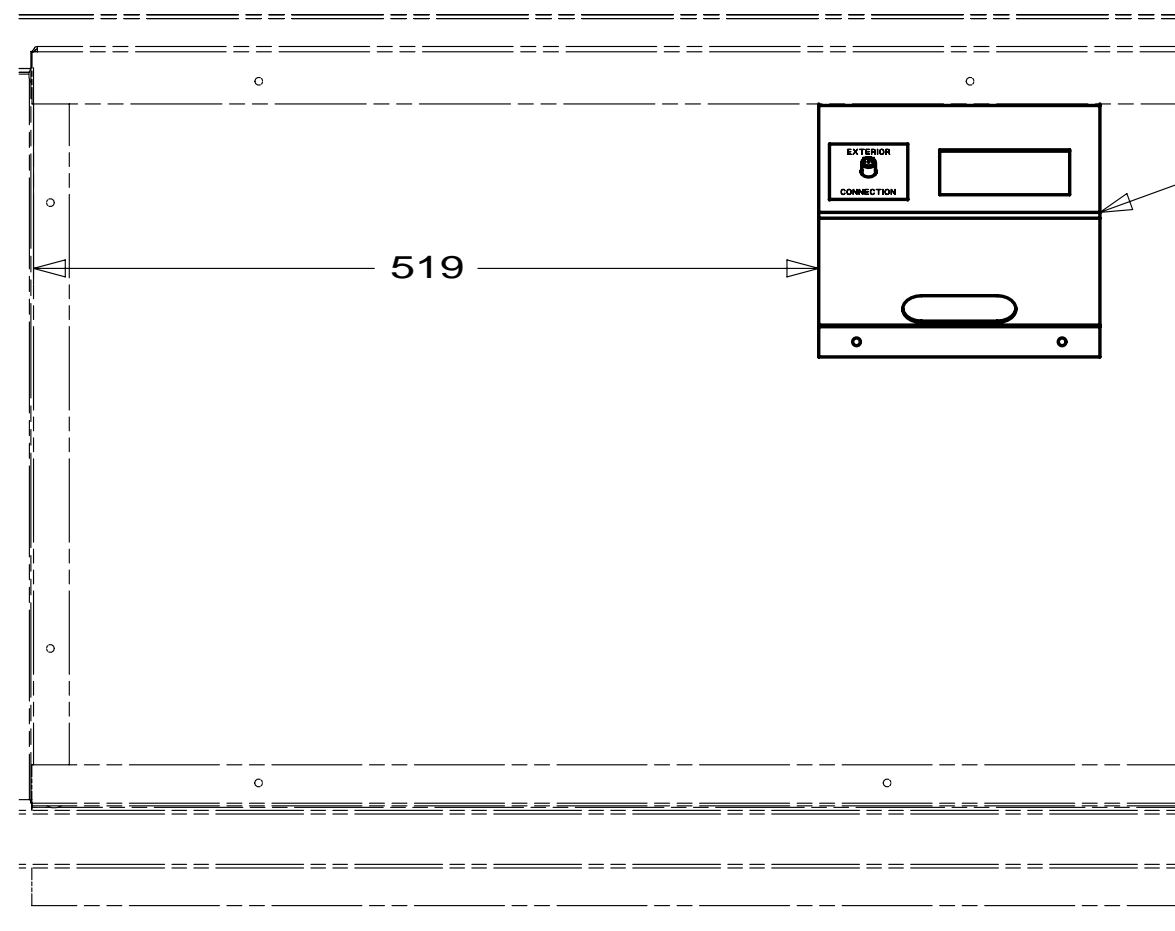
**DANGER**

**Danger of electrical shock, burns or death.** Always remove all power sources before attempting any repair, service or diagnostic work. Power can be present from shore power, generator, inverter or battery. All power sources must be disabled and secured before performing any service.



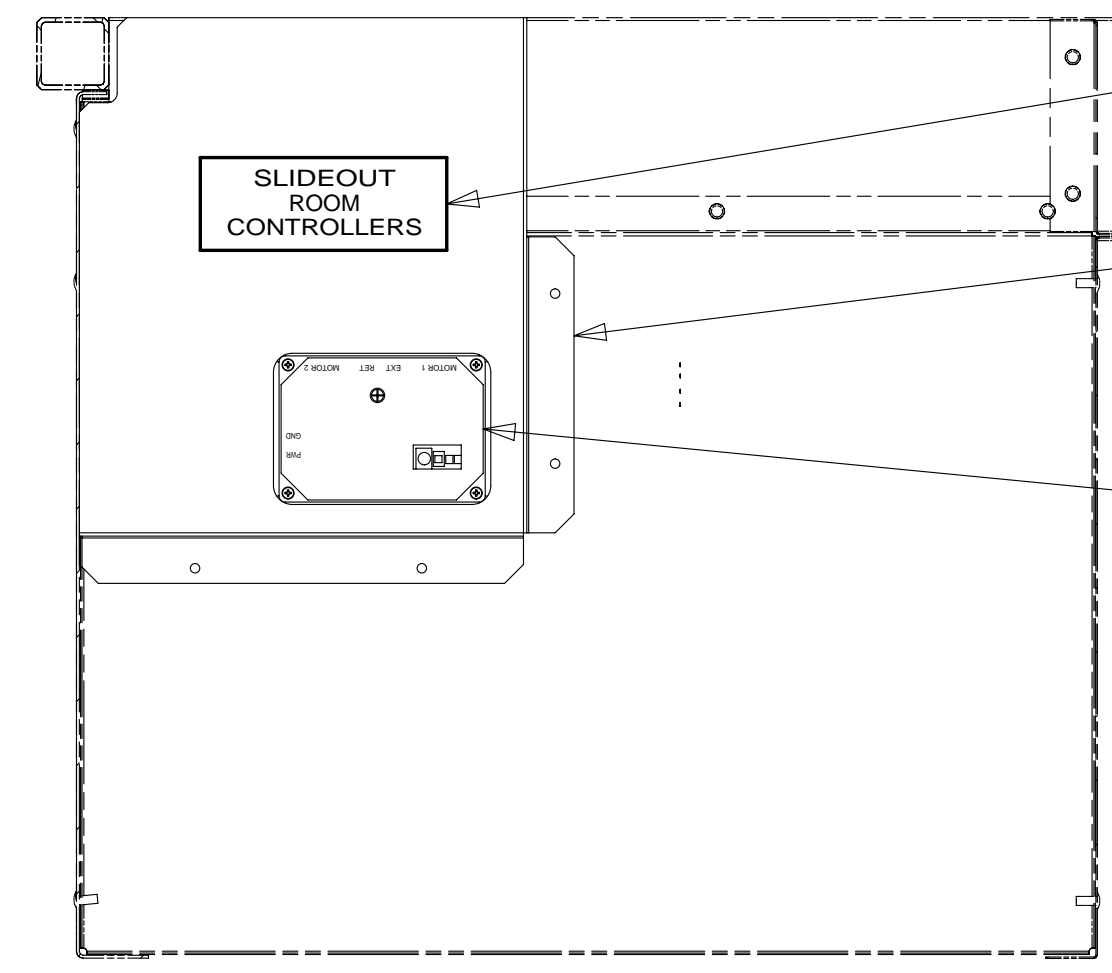
**CAUTION**

If you lack the skills, tools or equipment to perform diagnostic or repair work leave such work to an authorized Winnebago Industries dealer or other qualified shop.



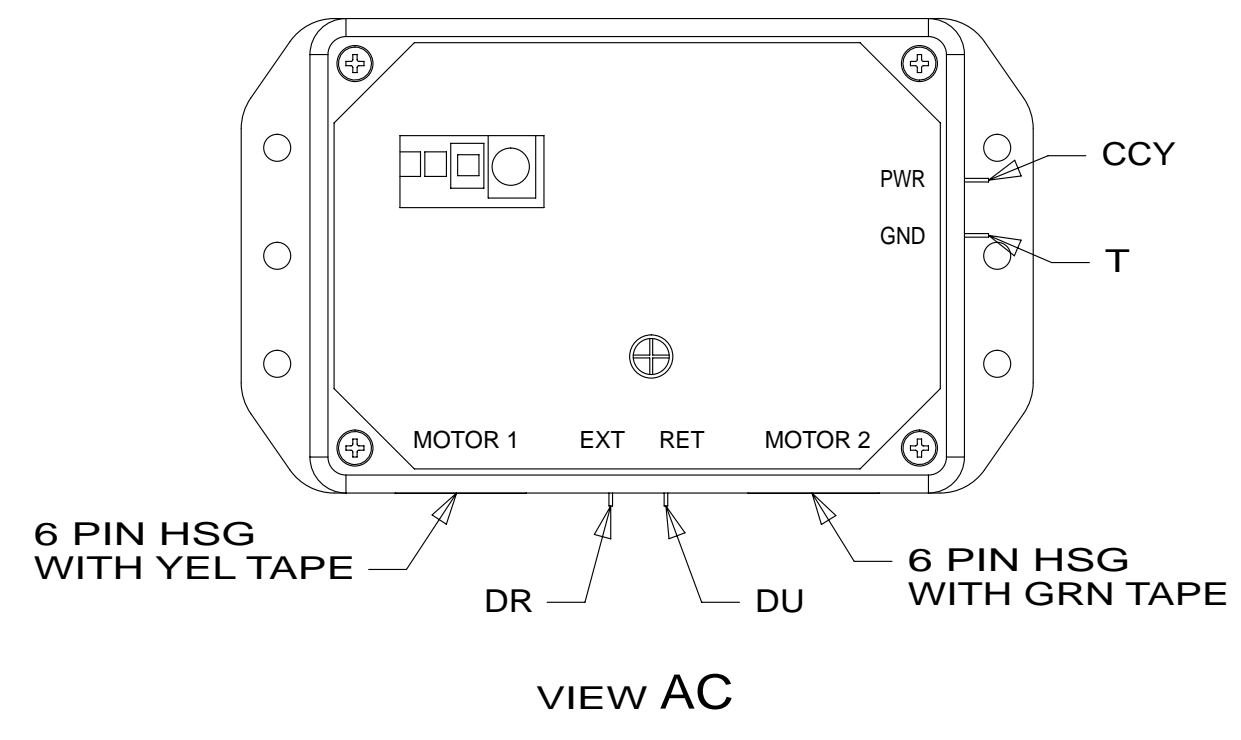
VIEW AA

- PANEL-RCP  
151376-02-CHT
- ADAPTER  
082134-01-000
- NUT  
82136-01-000
- LABEL  
157486-01-CHT
- SCREW  
G67-10-12U (4)

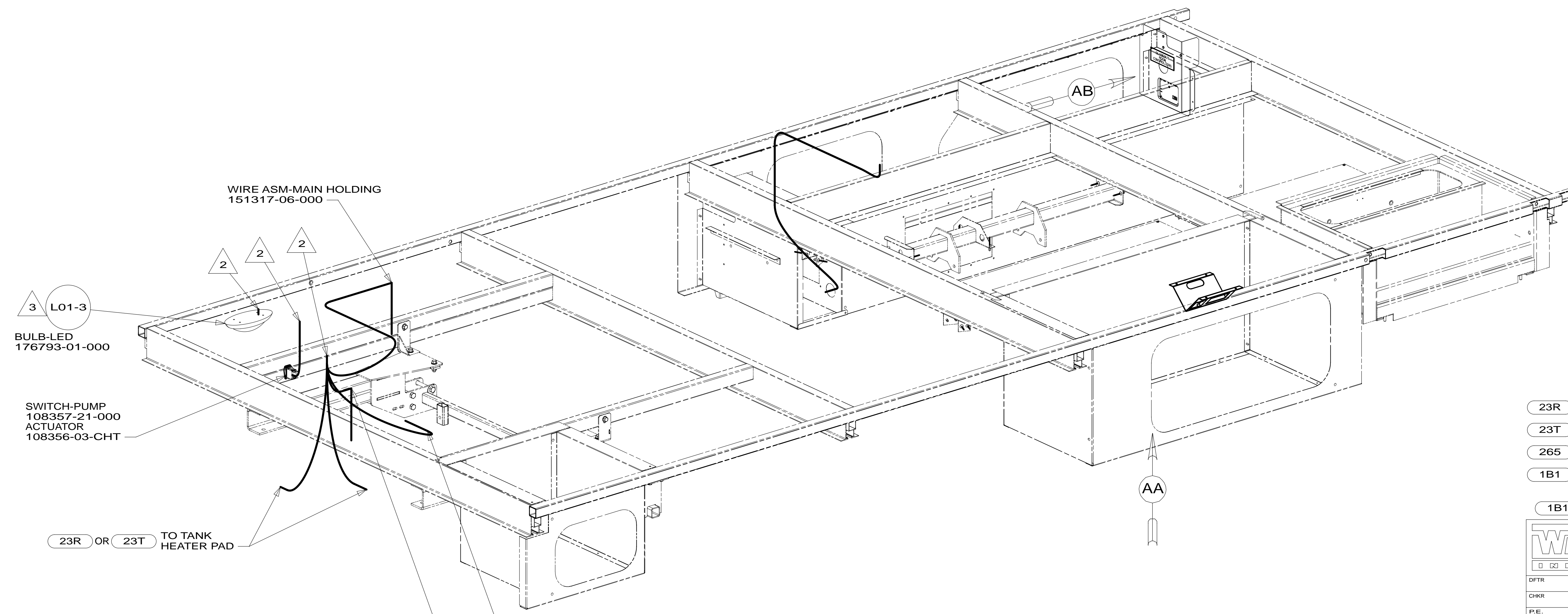


VIEW AB

- LABEL  
98379-09-000
- BRACKET,COVER-CONTROL MODULE  
180171-02-CHT
- SCREW  
G39-10-12U (4)
- CONTROL-SLIDEOUT,IN-WALL  
178451-01-000
- SCREW  
G39-08-12U (4)
- DETAIL AC



VIEW AC



- WIRE ASM-MAIN HOLDING  
151317-06-000
- BULB-LED  
176793-01-000
- SWITCH-PUMP  
108357-21-000
- ACTUATOR  
108356-03-CHT
- TO TANK HEATER PAD 23R OR 23T
- WIRE ASM-AUX HOLDING  
151316-02-000

- 3 REMOVE BULB SUPPLIED WITH LAMP, SEND BULB TO STOCK AS PART NUMBER 117805-02-000, REPLACE WITH LED BULB
- 2 WIRE ROUTED THROUGH FLOOR IN THIS AREA.
- 1. ROUTE TANK SENSOR WIRES SO THEY DO NOT PASS OVER SENSORS. USE WIRE TIE MOUNT 155366-01-000 AS NEEDED. TANK SURFACE MUST BE CLEANED USING ISOPROPYL ALCOHOL AND PRIME WITH PRIMER 94.

NOTES:

- 23R DRAINAGE SYSTEM/HEAT-PREWIRE
- 23T DRAINAGE SYSTEM-HEATED
- 265 CODES/STANDARDS-CSA/CMVSS
- 1B1 CODES/STANDARDS USA
- 1B1 265

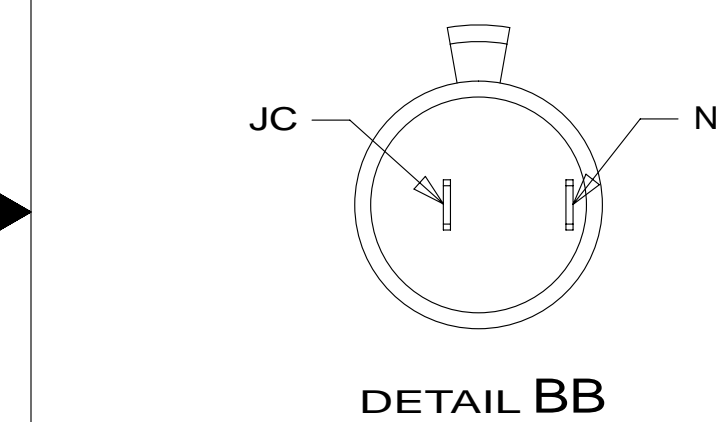
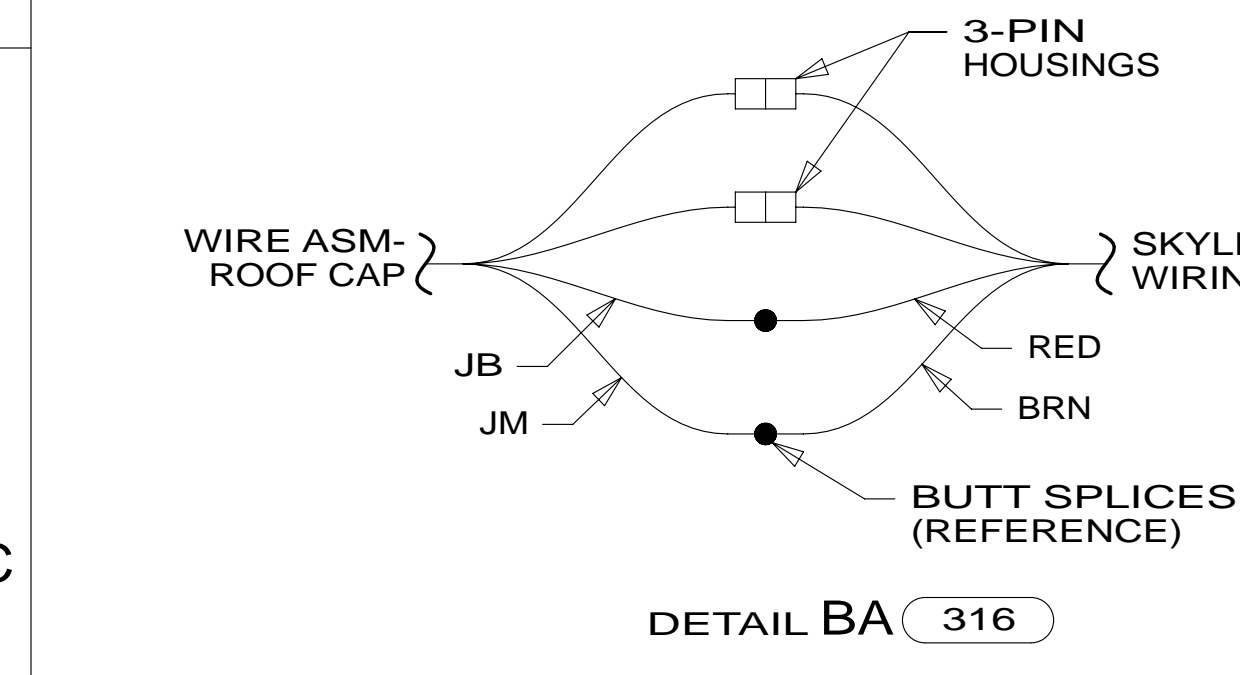
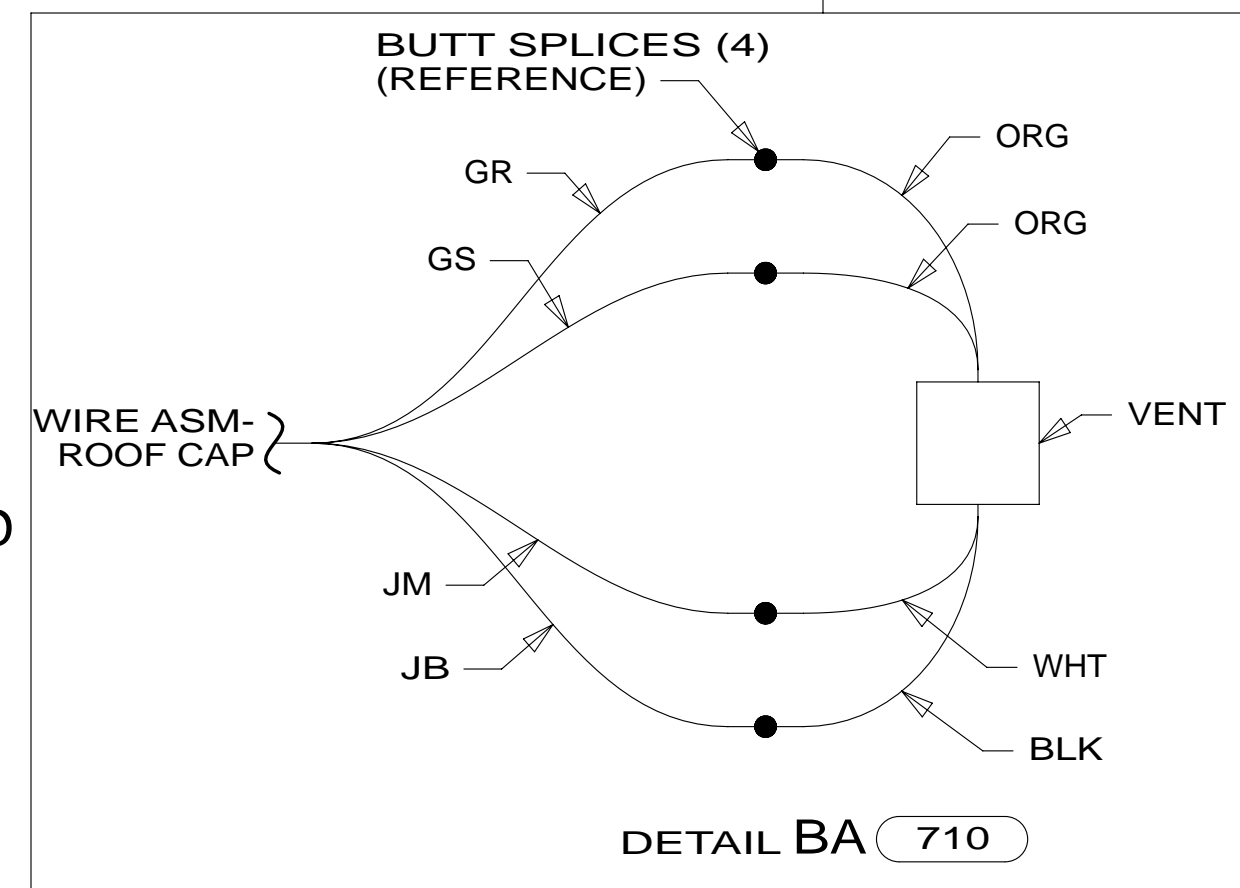
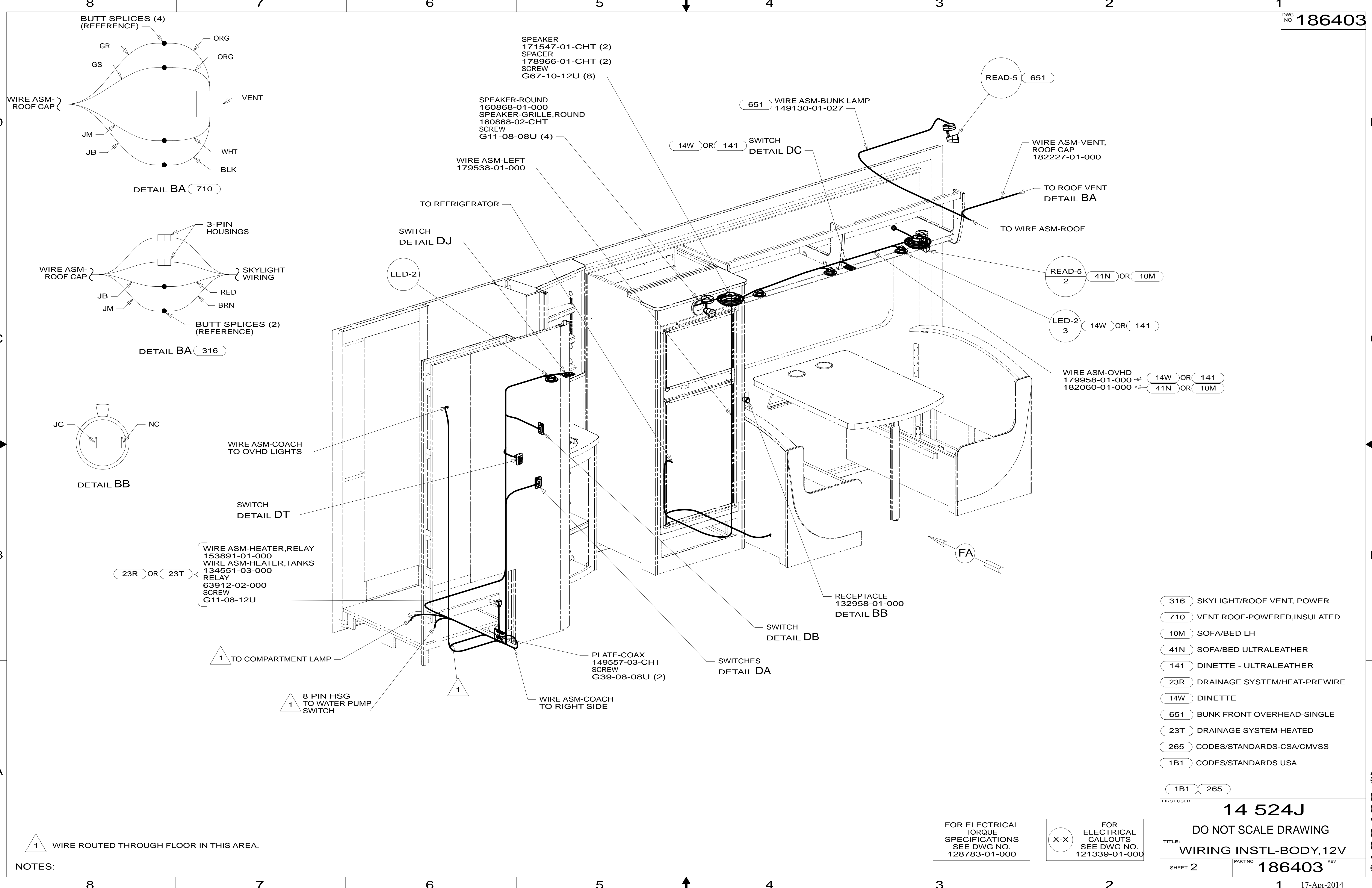
**WINNEBAGO** COPYRIGHT 2014 WINNEBAGO INDUSTRIES, INC.

DFTR	ORIG. DATE
CHKR	ALL DIMENSIONS ARE IN MILLIMETERS
P.E.	
M.E.	FIRST USED
DSNR	<b>14 524J</b>
UNSPECIFIED TOLERANCES ARE:	
WHOLE DIM (X)	: 3
ONE-PLACE (X.X)	: 1.5
TWO-PLACE (X.XX)	: 0.50
ANGLE	: 1°
THIRD ANGLE PROJECTION	
DO NOT SCALE DRAWING	REFER TO ES0018 FOR FASTENER TIGHTENING GUIDELINES
TITLE: <b>WIRING INSTL-BODY,12V</b>	
SHEET 1 OF 6	PART NO <b>186403</b> REV
REF:	1 17-Apr-2014

FOR ELECTRICAL TORQUE SPECIFICATIONS SEE DWG NO. 128783-01-000

X-X FOR ELECTRICAL CALLOUTS SEE DWG NO. 121339-01-000

\* 186403 \*



NOTES:  
 1 WIRE ROUTED THROUGH FLOOR IN THIS AREA.

SPEAKER  
 171547-01-CHT (2)  
 SPACER  
 178966-01-CHT (2)  
 SCREW  
 G67-10-12U (8)

SPEAKER-ROUND  
 160868-01-000  
 SPEAKER-GRILLE,ROUND  
 160868-02-CHT  
 SCREW  
 G11-08-08U (4)

WIRE ASM-LEFT  
 179538-01-000

651 WIRE ASM-BUNK LAMP  
 149130-01-027

14W OR 141 SWITCH  
 DETAIL DC

WIRE ASM-VENT,  
 ROOF CAP  
 182227-01-000

TO ROOF VENT  
 DETAIL BA

TO WIRE ASM-ROOF

READ-5  
 2 41N OR 10M

LED-2  
 3 14W OR 141

WIRE ASM-OVHD  
 179558-01-000  
 182060-01-000

WIRE ASM-COACH  
 TO OVHD LIGHTS

SWITCH  
 DETAIL DT

WIRE ASM-HEATER,RELAY  
 153891-01-000  
 WIRE ASM-HEATER,TANKS  
 134551-03-000  
 RELAY  
 63912-02-000  
 SCREW  
 G11-08-12U

1 TO COMPARTMENT LAMP

1 8 PIN HSG  
 TO WATER PUMP  
 SWITCH

PLATE-COAX  
 149557-03-CHT  
 SCREW  
 G39-08-08U (2)

WIRE ASM-COACH  
 TO RIGHT SIDE

RECEPTACLE  
 132958-01-000  
 DETAIL BB

SWITCH  
 DETAIL DB

SWITCHES  
 DETAIL DA

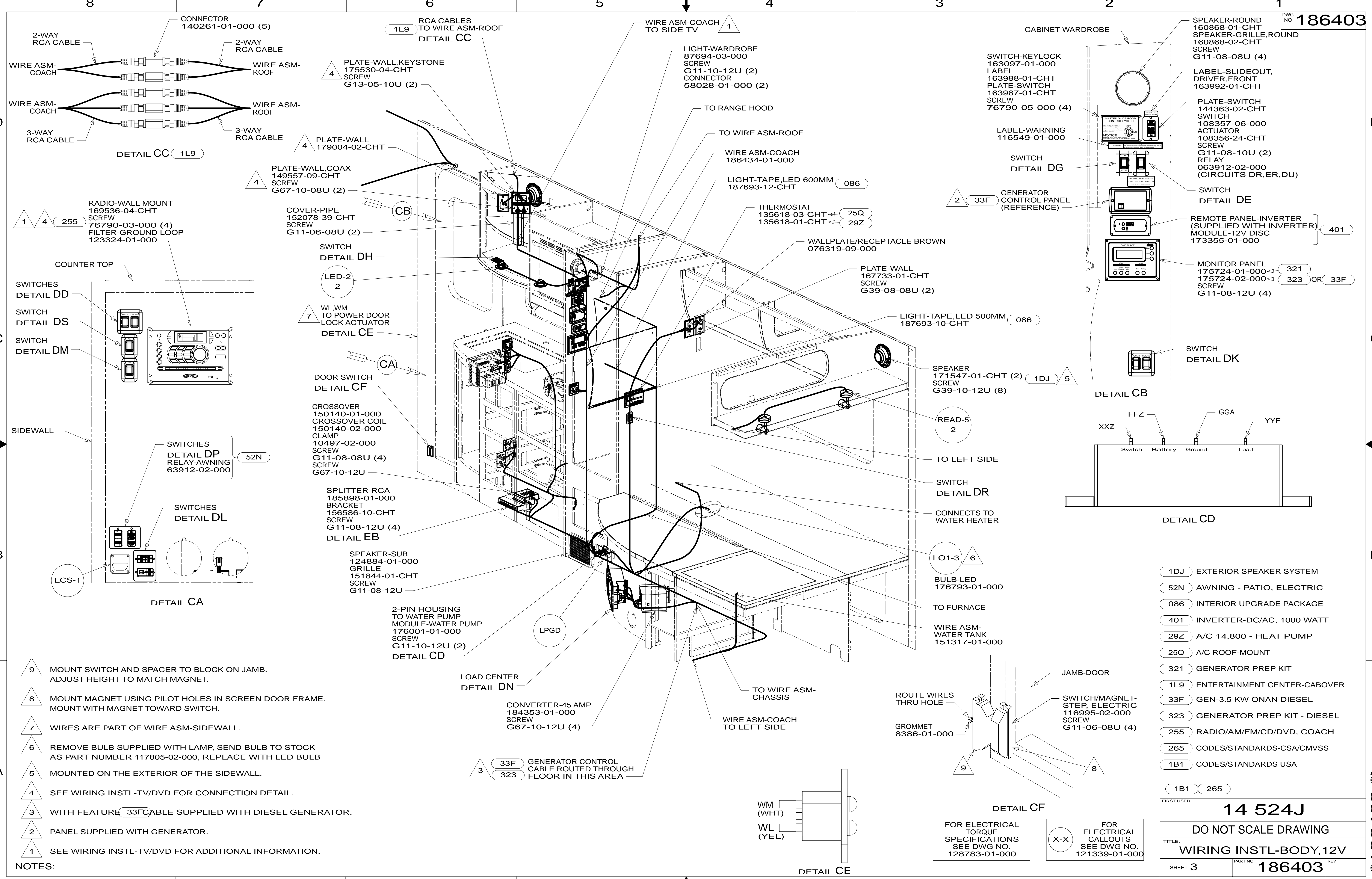
- 316 SKYLIGHT/ROOF VENT, POWER
- 710 VENT ROOF-POWERED,INSULATED
- 10M SOFA/BED LH
- 41N SOFA/BED ULTRALEATHER
- 141 DINETTE - ULTRALEATHER
- 23R DRAINAGE SYSTEM/HEAT-PREWIRE
- 14W DINETTE
- 651 BUNK FRONT OVERHEAD-SINGLE
- 23T DRAINAGE SYSTEM-HEATED
- 265 CODES/STANDARDS-CSA/CMVSS
- 1B1 CODES/STANDARDS USA

1B1	265
FIRST USED	
<b>14 524J</b>	
DO NOT SCALE DRAWING	
TITLE: <b>WIRING INSTL-BODY,12V</b>	
SHEET 2	PART NO <b>186403</b> REV
17-Apr-2014	

FOR ELECTRICAL  
 TORQUE  
 SPECIFICATIONS  
 SEE DWG NO.  
 128783-01-000

X-X  
 FOR  
 ELECTRICAL  
 CALLOUTS  
 SEE DWG NO.  
 121339-01-000

\* 186403 \* A



- NOTES:**
- 9 MOUNT SWITCH AND SPACER TO BLOCK ON JAMB. ADJUST HEIGHT TO MATCH MAGNET.
  - 8 MOUNT MAGNET USING PILOT HOLES IN SCREEN DOOR FRAME. MOUNT WITH MAGNET TOWARD SWITCH.
  - 7 WIRES ARE PART OF WIRE ASM-SIDEWALL.
  - 6 REMOVE BULB SUPPLIED WITH LAMP, SEND BULB TO STOCK AS PART NUMBER 117805-02-000, REPLACE WITH LED BULB
  - 5 MOUNTED ON THE EXTERIOR OF THE SIDEWALL.
  - 4 SEE WIRING INSTL-TV/DVD FOR CONNECTION DETAIL.
  - 3 WITH FEATURE 33FCABLE SUPPLIED WITH DIESEL GENERATOR.
  - 2 PANEL SUPPLIED WITH GENERATOR.
  - 1 SEE WIRING INSTL-TV/DVD FOR ADDITIONAL INFORMATION.

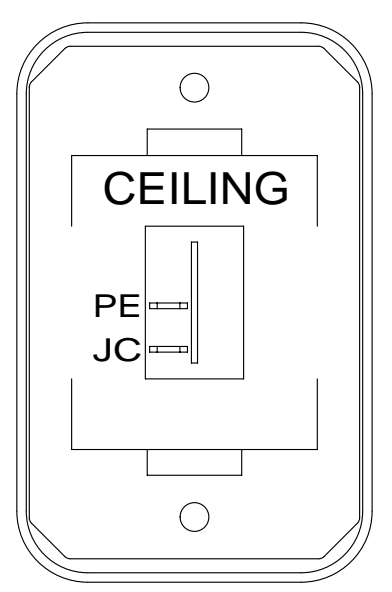
- 1DJ EXTERIOR SPEAKER SYSTEM
- 52N AWNING - PATIO, ELECTRIC
- 086 INTERIOR UPGRADE PACKAGE
- 401 INVERTER-DC/AC, 1000 WATT
- 29Z A/C 14,800 - HEAT PUMP
- 25Q A/C ROOF-MOUNT
- 321 GENERATOR PREP KIT
- 1L9 ENTERTAINMENT CENTER-CABOVER
- 33F GEN-3.5 KW ONAN DIESEL
- 323 GENERATOR PREP KIT - DIESEL
- 255 RADIO/AM/FM/CD/DVD, COACH
- 265 CODES/STANDARDS-CSA/CMVSS
- 1B1 CODES/STANDARDS USA

FOR ELECTRICAL TORQUE SPECIFICATIONS SEE DWG NO. 128783-01-000

FOR ELECTRICAL CALLOUTS SEE DWG NO. 121339-01-000

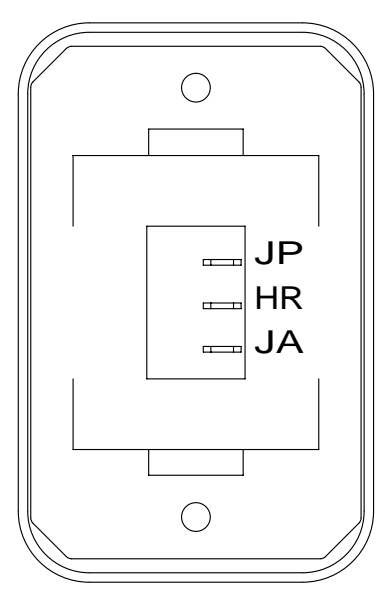
FIRST USED		<b>14 524J</b>	
DO NOT SCALE DRAWING			
TITLE: <b>WIRING INSTL-BODY,12V</b>			
SHEET 3	PART NO	<b>186403</b>	REV
			17-Apr-2014

\* 186403 \* A



SWITCH-ROCKER  
135740-01-CHT  
SWITCH-BASE  
135741-01-CHT  
SWITCH-BEZEL  
135742-07-CHT  
SCREW  
G11-08-08U (2)

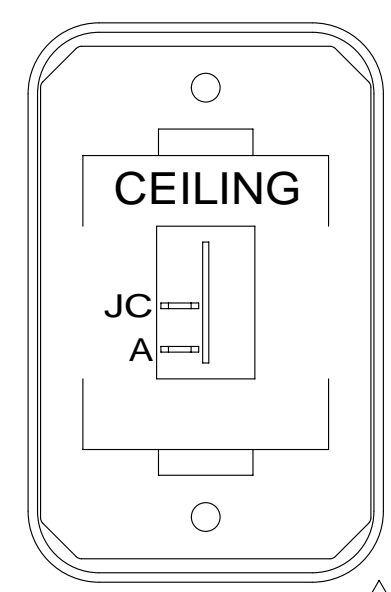
DETAIL DA



SWITCH-BLANK  
138253-01-CHT  
SWITCH-ROCKER  
135740-06-CHT  
SWITCH-BASE  
135741-01-CHT  
SWITCH-BEZEL  
135742-01-CHT  
SCREW  
G11-08-08U (2)  
LABEL-SWITCH  
134563-01-CHT

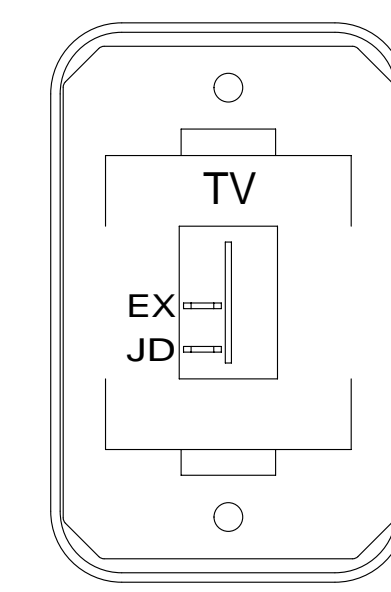
HOLDING TANK HEATER  
TURN OFF When Not In Use  
SEE OPERATORS MANUAL

DETAIL DE



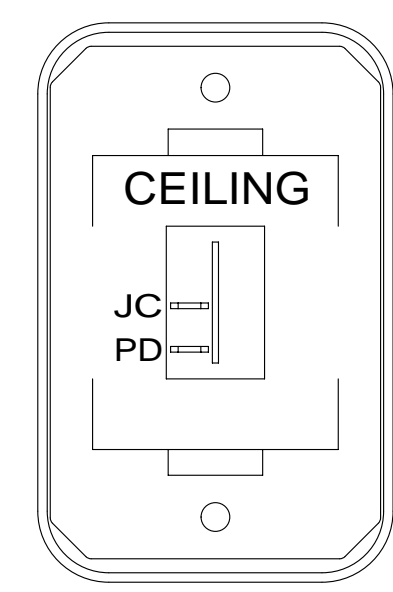
SWITCH-ROCKER  
135740-01-CHT  
SWITCH-BASE  
135741-01-CHT  
SWITCH-BEZEL  
135742-07-CHT  
SCREW  
G11-08-08U (2)

DETAIL DK



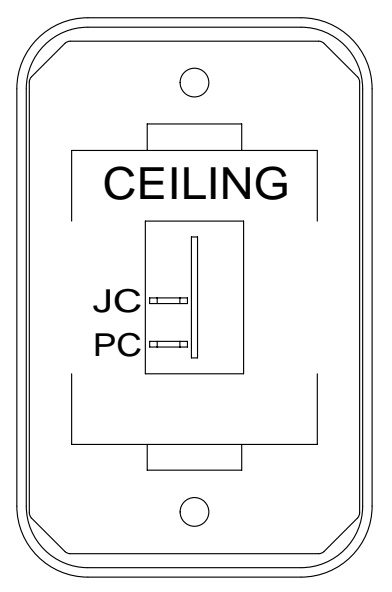
SWITCH-ROCKER  
135740-01-CHT  
SWITCH-BASE  
135741-01-CHT  
SWITCH-BEZEL  
135742-45-CHT  
SCREW  
G11-08-08U (2)

DETAIL DM



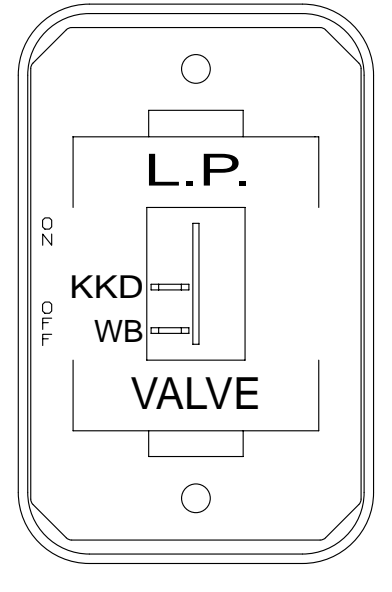
SWITCH-ROCKER  
135740-01-CHT  
SWITCH-BASE  
135741-01-CHT  
SWITCH-BEZEL  
135742-07-CHT  
SCREW  
G11-08-08U (2)

DETAIL DR



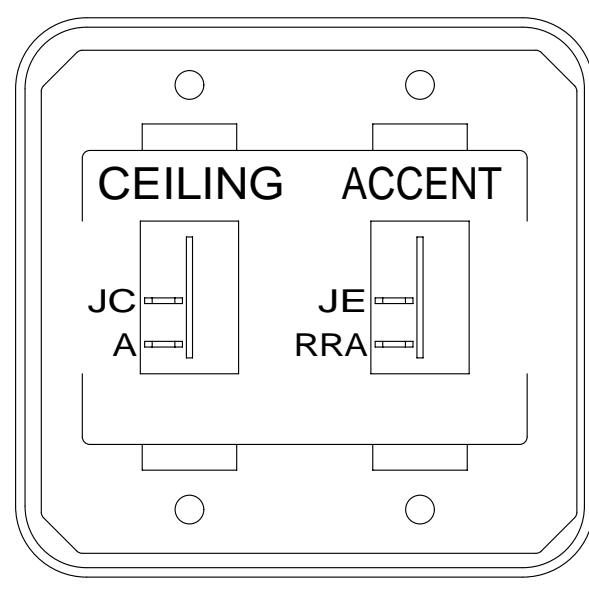
SWITCH-ROCKER  
135740-01-CHT  
SWITCH-BASE  
135741-01-CHT  
SWITCH-BEZEL  
135742-07-CHT  
SCREW  
G11-08-08U (2)

DETAIL DB



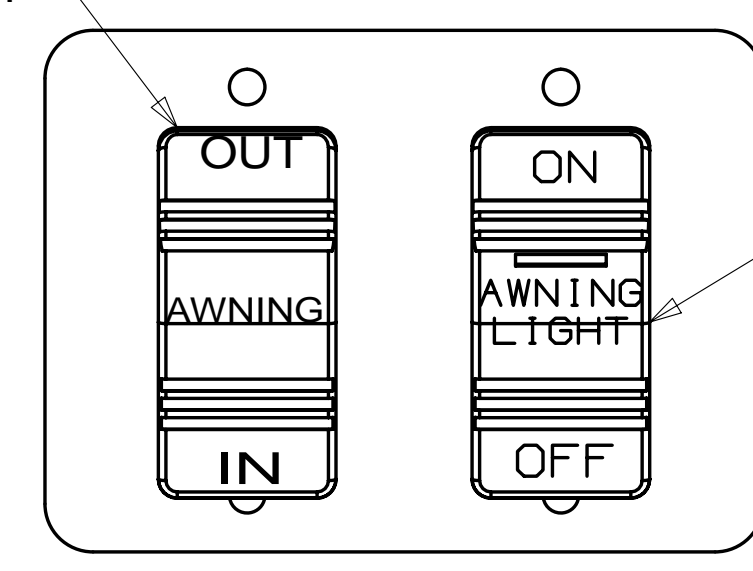
SWITCH-ROCKER  
135740-01-CHT  
SWITCH-BASE  
135741-01-CHT  
SWITCH-BEZEL  
135742-59-CHT  
SCREW  
G11-08-08U (2)

DETAIL DG



SWITCH-ROCKER  
135740-01-CHT (2)  
SWITCH-BASE  
135741-02-CHT  
SWITCH-BEZEL  
135742-56-CHT  
SCREW  
G11-08-08U (4)

DETAIL DK 086

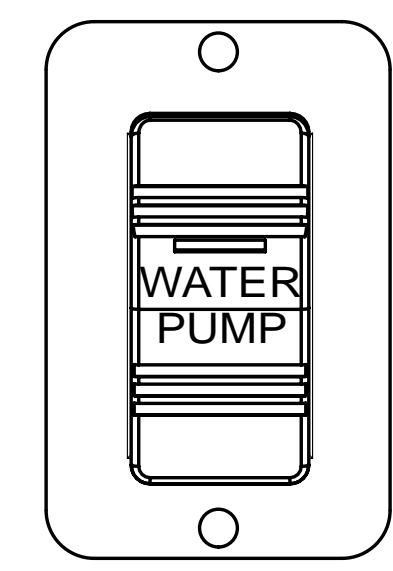


SWITCH-ROCKER  
108357-06-000  
ACTUATOR-SWITCH  
108356-12-CHT

PLATE-SWITCH  
158431-17-CHT  
SCREW  
G11-06-10U (4)

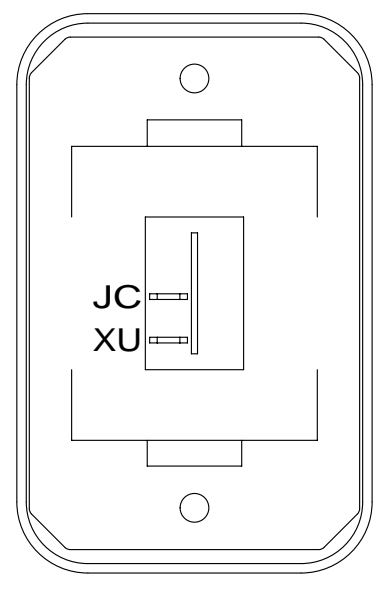
SWITCH-ROCKER  
108357-14-000  
ACTUATOR-SWITCH  
108356-28-CHT

DETAIL DP 52N



SWITCH-WATER PUMP  
108357-21-000  
ACTUATOR  
108356-23-CHT  
PLATE  
144363-02-CHT  
SCREW  
G11-06-10U (2)

DETAIL DT



SWITCH-ROCKER  
135740-01-CHT (2)  
SWITCH-BASE  
135741-01-CHT (2)  
SWITCH-BEZEL  
135742-01-CHT (2)  
SCREW  
G11-08-08U (4)

DETAIL DC 14W OR 141

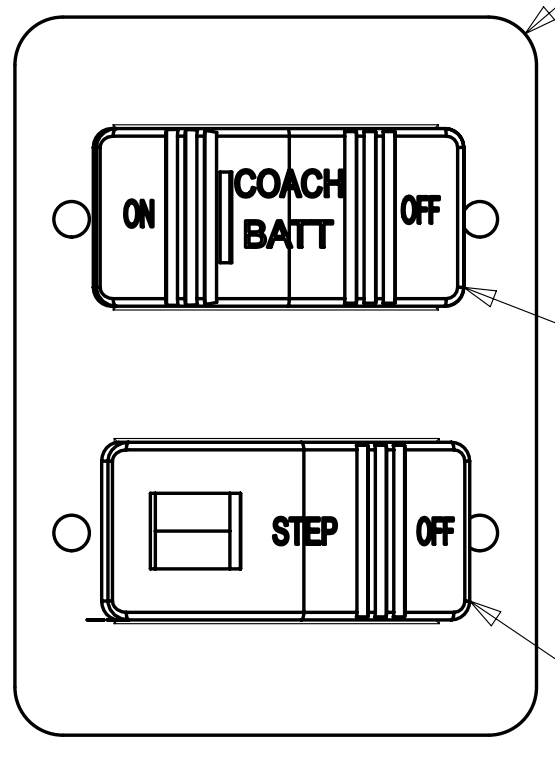
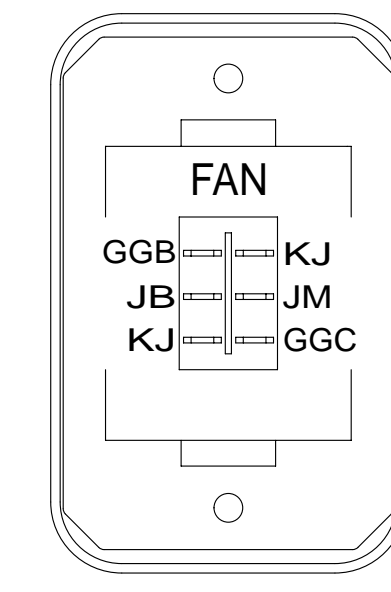


PLATE-SWITCH  
158431-17-CHT  
SCREW  
G11-06-10U (4)

SWITCH-BATT DISC  
108357-18-000  
ACTUATOR-BATT DISC  
108356-19-CHT  
WIRE ASM-THERM  
186796-01-000

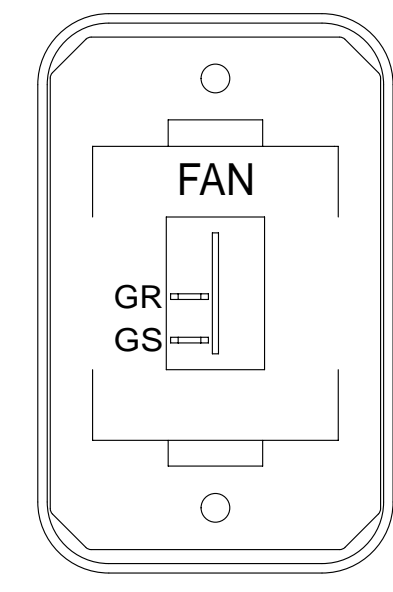
SWITCH-STEP  
108357-19-000

DETAIL DL



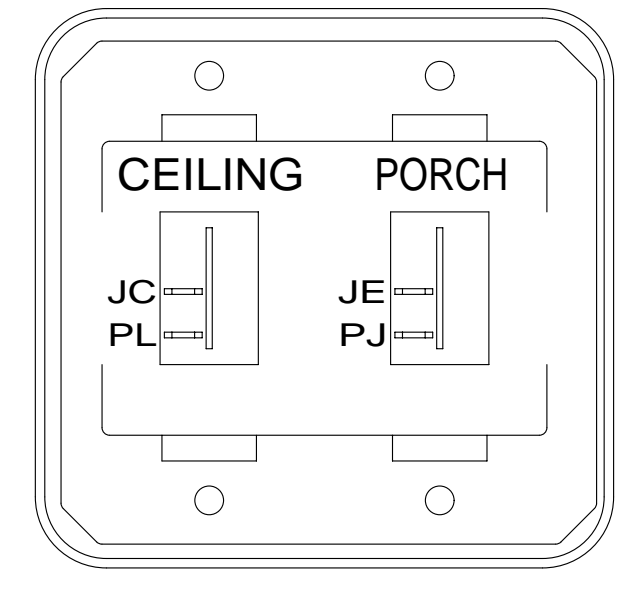
SWITCH-ROCKER  
135740-03-CHT  
SWITCH-BASE  
135741-01-CHT  
SWITCH-BEZEL  
135742-12-CHT  
SCREW  
G11-08-08U (2)

DETAIL DS 316



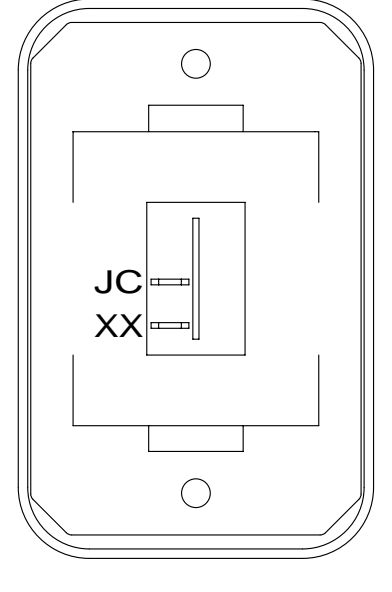
SWITCH-ROCKER  
135740-01-CHT  
SWITCH-BASE  
135741-01-CHT  
SWITCH-BEZEL  
135742-12-CHT  
SCREW  
G11-08-08U (2)

DETAIL DS 710



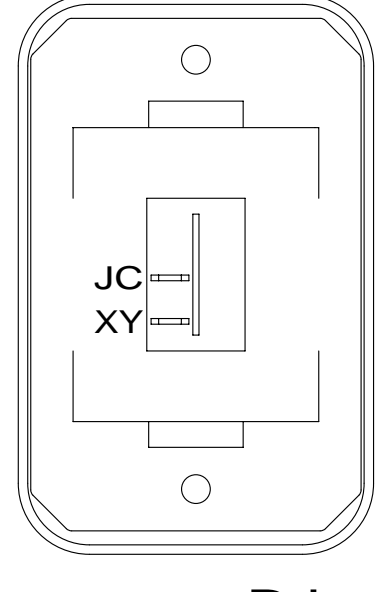
SWITCH-ROCKER  
135740-01-CHT (2)  
SWITCH-BASE  
135741-02-CHT  
SWITCH-BEZEL  
135742-19-CHT  
SCREW  
G11-08-08U (4)

DETAIL DD



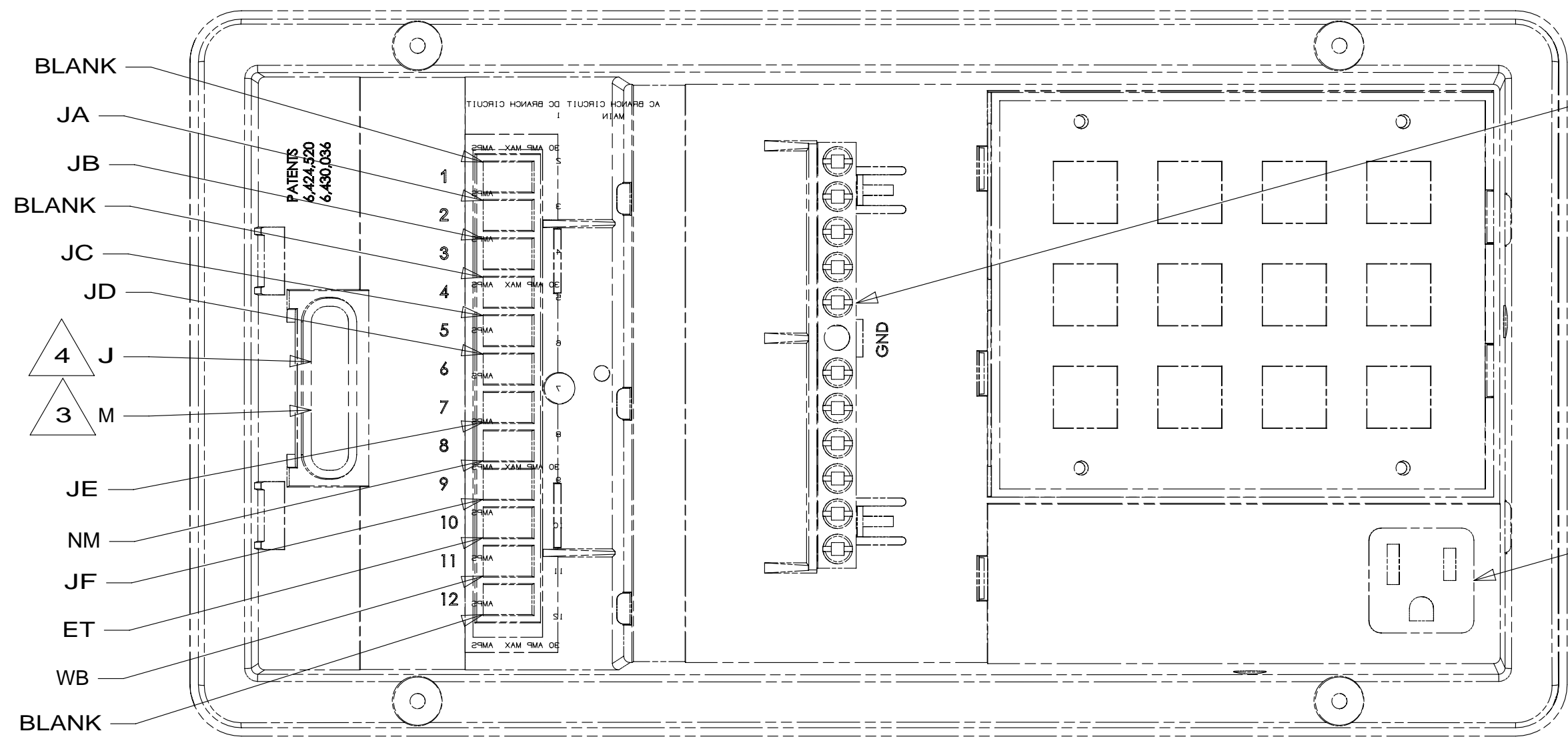
SWITCH-ROCKER  
135740-01-CHT  
SWITCH-BASE  
135741-01-CHT  
SWITCH-BEZEL  
135742-01-CHT  
SCREW  
G11-08-08U (2)

DETAIL DH



SWITCH-ROCKER  
135740-01-CHT  
SWITCH-BASE  
135741-01-CHT  
SWITCH-BEZEL  
135742-01-CHT  
SCREW  
G11-08-08U (2)

DETAIL DJ



GROUND BAR  
CIRCUITS:  
NC, JX, FFE, JM,  
MS, JY, ND, NF,  
NE, JP, PM, UK

PLUG CONVERTER  
POWER CORD  
INTO CONVENIENCE  
RECPTACLE

- NOTES:
- 5 WITHOUT 086
  - 4 CIRCUIT FROM WIRE ASM-CHASSIS.
  - 3 CIRCUIT FROM WIRE ASM-COACH.
  - 2 FOR REFERENCE ONLY. SEE LOAD CENTER/ATS ASM FOR ADDITIONAL INFORMATION.
  - 1 WITHOUT 23T OR 23R

- 086 INTERIOR UPGRADE PACKAGE
- 141 DINETTE - ULTRALEATHER
- 14W DINETTE
- 710 VENT ROOF-POWERED, INSULATED
- 316 SKYLIGHT/ROOF VENT, POWER
- 23R DRAINAGE SYSTEM/HEAT-PREWIRE
- 52N AWNING - PATIO, ELECTRIC
- 23T DRAINAGE SYSTEM-HEATED
- 1E2 ENTRANCE STEP-ELEC.
- 265 CODES/STANDARDS-CSA/CMVSS
- 1B1 CODES/STANDARDS USA

FOR ELECTRICAL  
TORQUE  
SPECIFICATIONS  
SEE DWG NO.  
128783-01-000

FOR ELECTRICAL  
CALLOUTS  
SEE DWG NO.  
121339-01-000

FIRST USED

**14 524J**

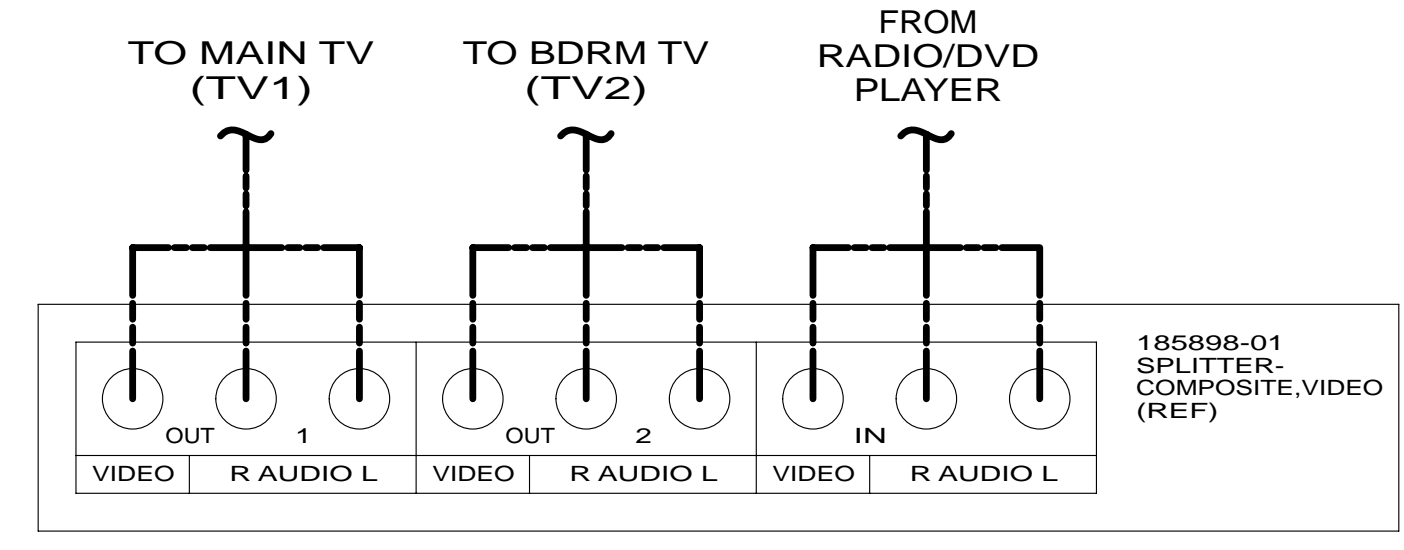
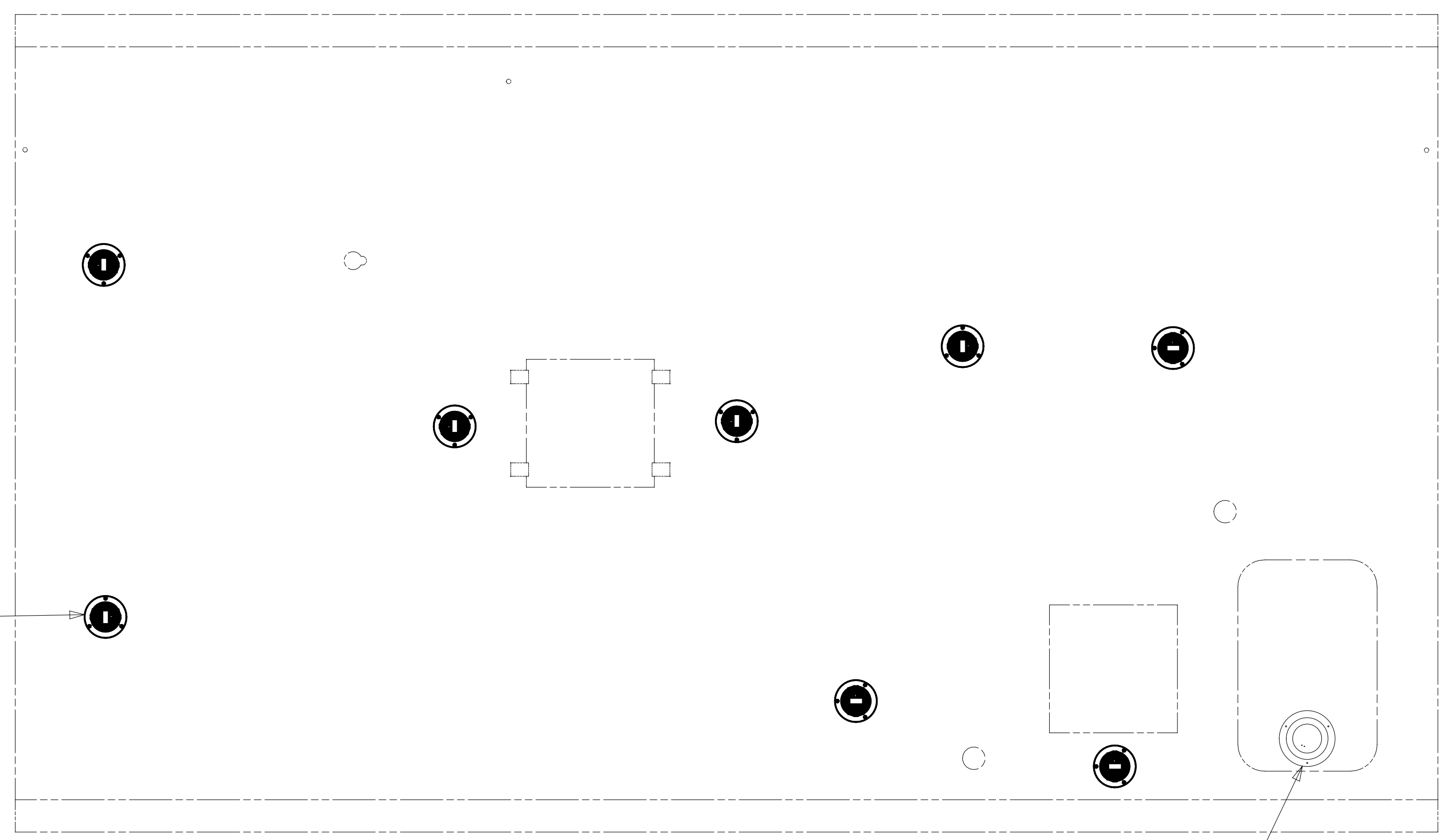
DO NOT SCALE DRAWING

TITLE: **WIRING INSTL-BODY, 12V**

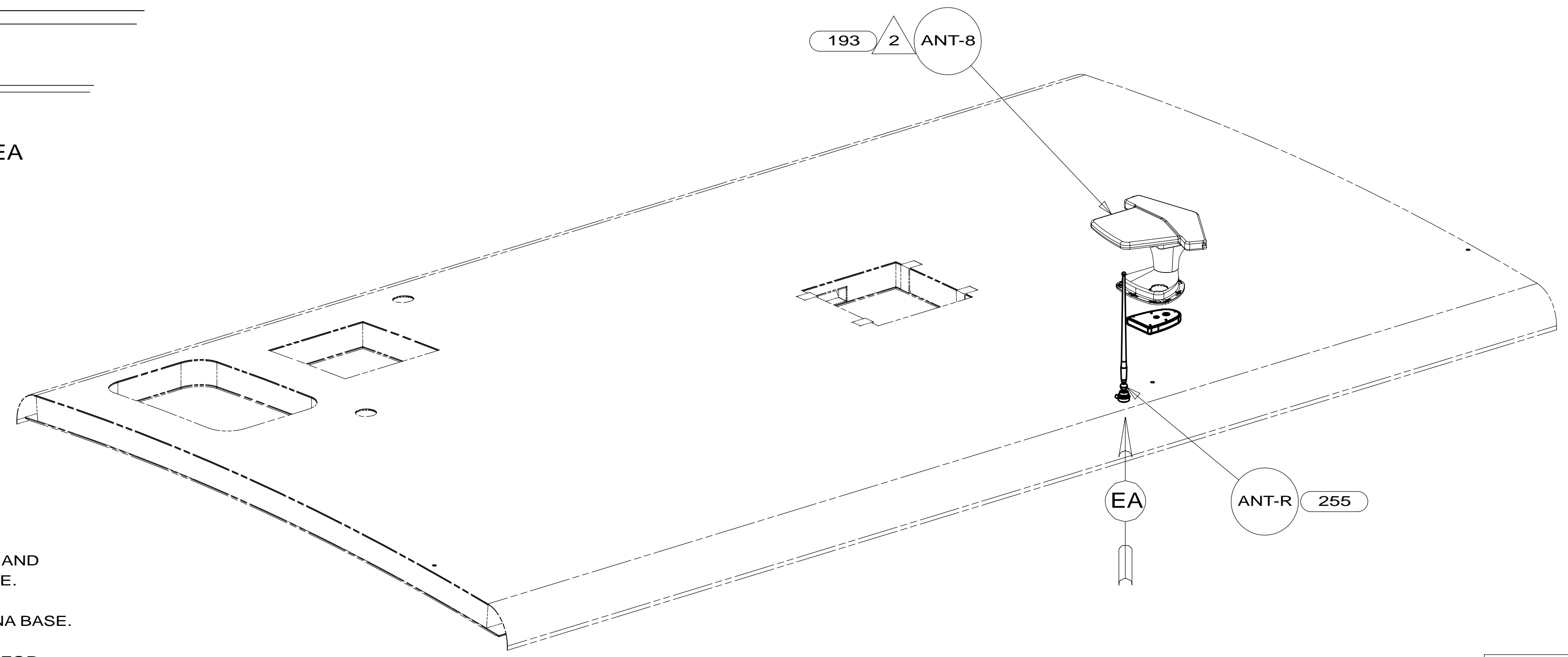
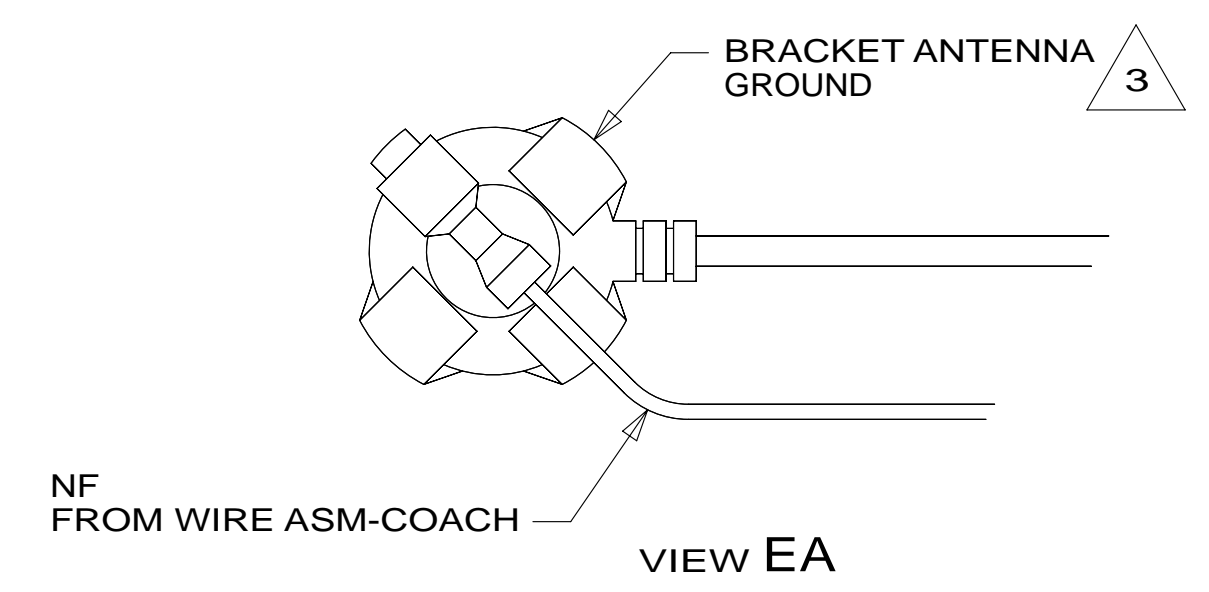
SHEET 4 PART NO **186403** REV

17-Apr-2014

\* 186403 \* A



DETAIL EB 4



- 4 CONNECT RED WIRE TO YELLOW WIRE AND CONNECT BLACK WIRE TO WHITE WIRE.
- 3 WRAP BRACKET LEGS AROUND ANTENNA BASE.
- 2 SEE ANTENNA INSTALLATION MANUAL FOR CORRECT INSTALLATION PROCEDURE.

NOTES:  
1. SEE ROOF ASM FOR ADDITIONAL INFORMATION.

- 193 TV ANTENNA-AMPLIFIED SYSTEM
- 255 RADIO/AM/FM/CD/DVD, COACH
- 265 CODES/STANDARDS-CSA/CMVSS
- 1B1 CODES/STANDARDS USA

FIRST USED	
<b>14 524J</b>	
DO NOT SCALE DRAWING	
TITLE: <b>WIRING INSTL-BODY, 12V</b>	
SHEET 5	PART NO. <b>186403</b> REV

FOR ELECTRICAL TORQUE SPECIFICATIONS SEE DWG NO. 128783-01-000

FOR ELECTRICAL CALLOUTS SEE DWG NO. 121339-01-000

\* 186403 \* A

6 PIN HSG TO SLIDEOUT MOTOR WITH YELLOW TAPE

6 PIN HSG TO SLIDEOUT MOTOR WITH GREEN TAPE

WIRE ROUTED BEHIND TRIM PIECE IN THIS AREA

WIRE ROUTED BEHIND TRIM PIECE IN THIS AREA

WIRE ASM-SLIDEOUT MOTORS 181004-03-000

CLAMP 10495-02-000 (7)  
SCREW G11-06-12U (7)

WIRE PASSES THROUGH FLOOR TO SLIDEOUT CONTROL  
DETAIL AC

VIEW FA

265 CODES/STANDARDS-CSA/CMVSS

1B1 CODES/STANDARDS USA

1B1 265

FIRST USED  
**14 524J**

DO NOT SCALE DRAWING

TITLE: **WIRING INSTL-BODY, 12V**

SHEET 6 PART NO **186403** REV

FOR ELECTRICAL TORQUE SPECIFICATIONS SEE DWG NO. 128783-01-000

FOR ELECTRICAL CALLOUTS SEE DWG NO. 121339-01-000

X-X

\* 186403 \* A