



DANGER

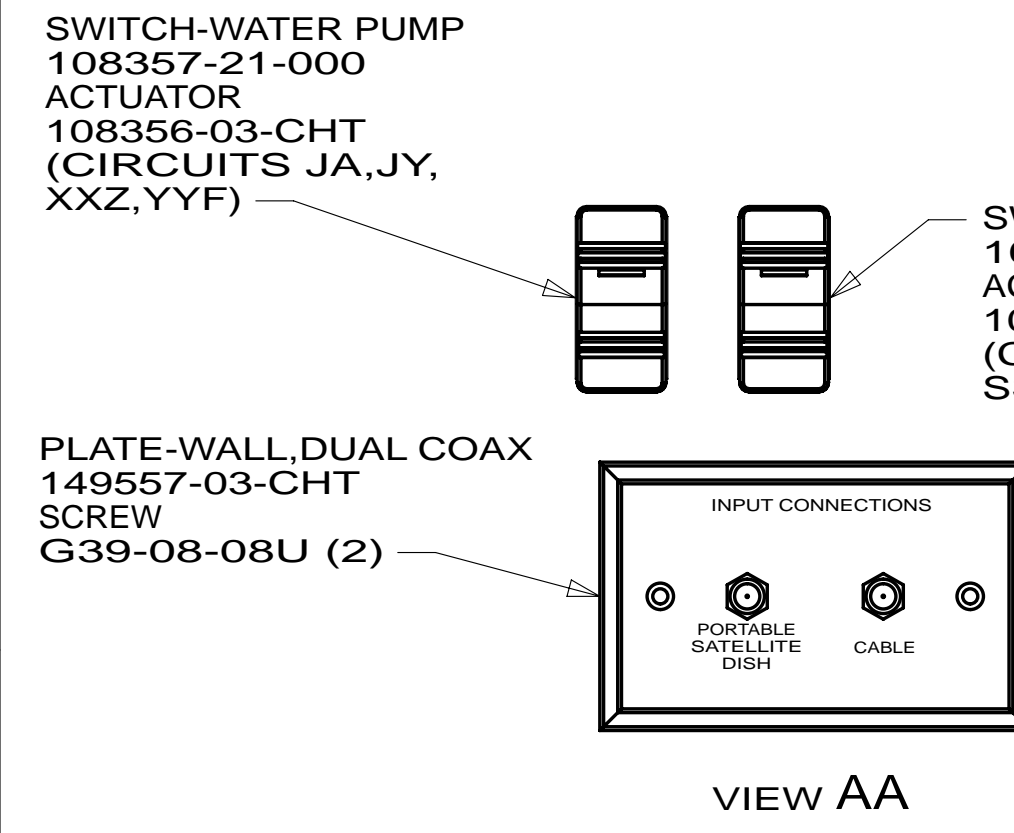
Danger of electrical shock, burns or death. Always remove all power sources before attempting any repair, service or diagnostic work. Power can be present from shore power, generator, inverter or battery. All power sources must be disabled and secured before performing any service.



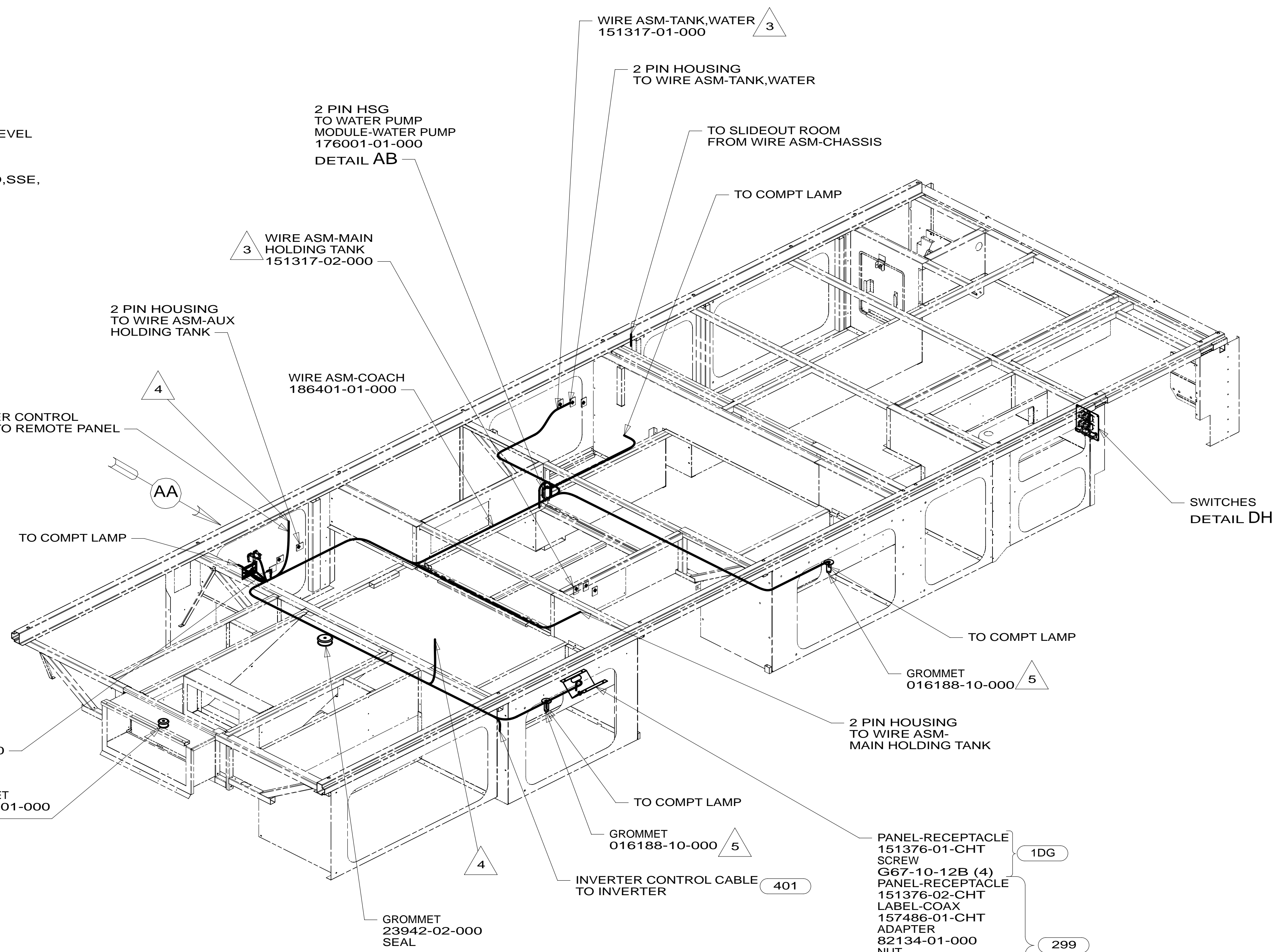
CAUTION

If you lack the skills, tools or equipment to perform diagnostic or repair work leave such work to an authorized Winnebago Industries dealer or other qualified shop.

8 7 6 5 4 3 2 1



VIEW AA

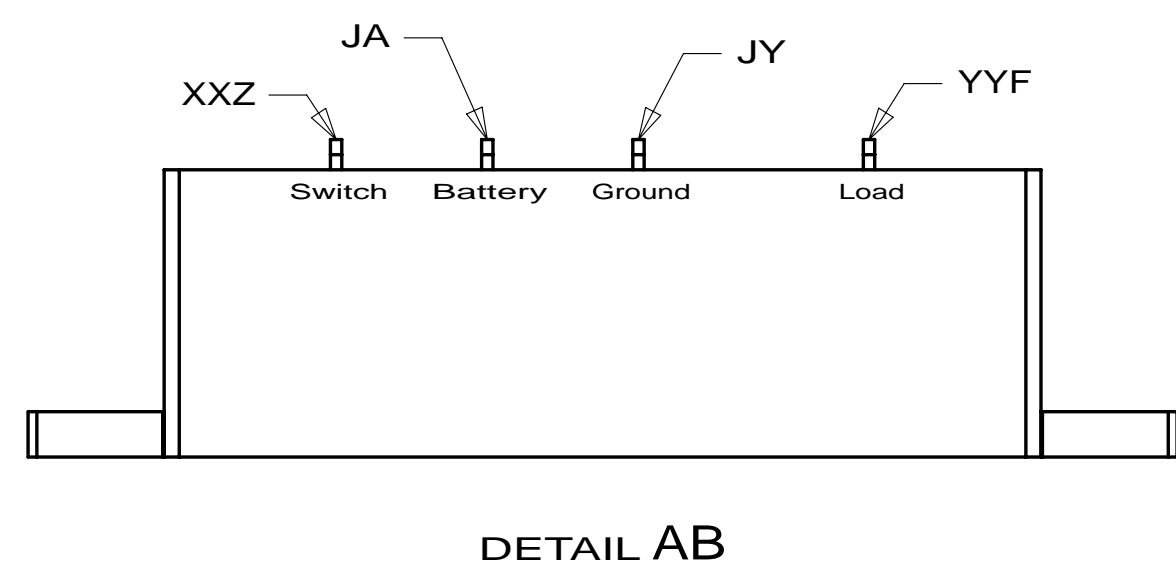


- (299) ENTERTAINMENT CENTER EXT.W/O
- (1DG) EXT ENTERTAIN CTR W/TV & CD
- (401) INVERTER-DC/AC, 1000 WATT
- (265) CODES/STANDARDS-CSA/CMVSS
- (1B1) CODES/STANDARDS USA



DFT-ORIG	ORIG. DATE
CHKR	ALL DIMENSIONS ARE IN MILLIMETERS
P.E.	
M.E.	
DSNR	FIRST USED
14 D30A	
UNSPECIFIED TOLERANCES ARE:	MATERIAL:
WHOLE DIM (X)	: 3
ONE-PLACE (X.X)	: 1.5
TWO-PLACE (X.XX)	: 0.50
ANGLE	: 1°
THIRD ANGLE PROJECTION	
DO NOT SCALE DRAWING	REFER TO ES0018 FOR FASTENER TIGHTENING GUIDELINES
TITLE: WIRING INSTL-BODY,12V	
SHEET 1 OF 8	PART NO. 186398 REV

- NOTES:
1. AT MINIMUM ALL WIRES TO BE SUPPORTED AND SECURED PER CODE REQUIREMENTS. USE CLAMP 10495 OR 10497 OR WIRE TIE 8343 OR 108046 AND SCREW G67-XX-XXX OR G56-XX-XXX AS APPROPRIATE FOR INSTALLATION.
 2. ROUTE TANK SENSOR WIRES SO THEY DO NOT PASS OVER SENSORS. USE WIRE TIE MOUNT 155366-01-000 AND WIRE TIE 8343-01-000 AS NEEDED. TANK SURFACE MUST BE CLEANED USING ISOPROPYL ALCOHOL AND PRIME WITH PRIMER 94.

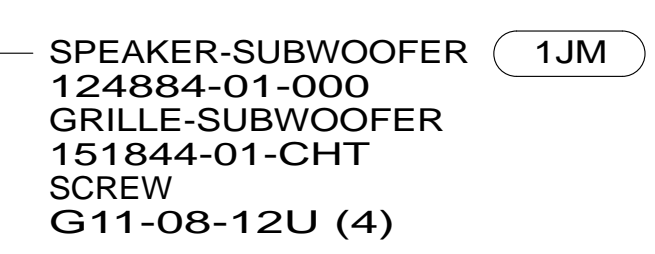
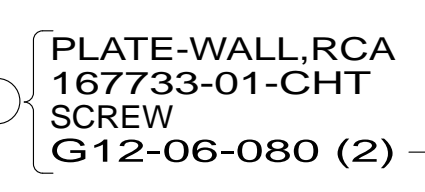
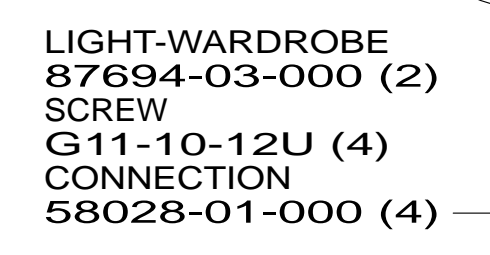
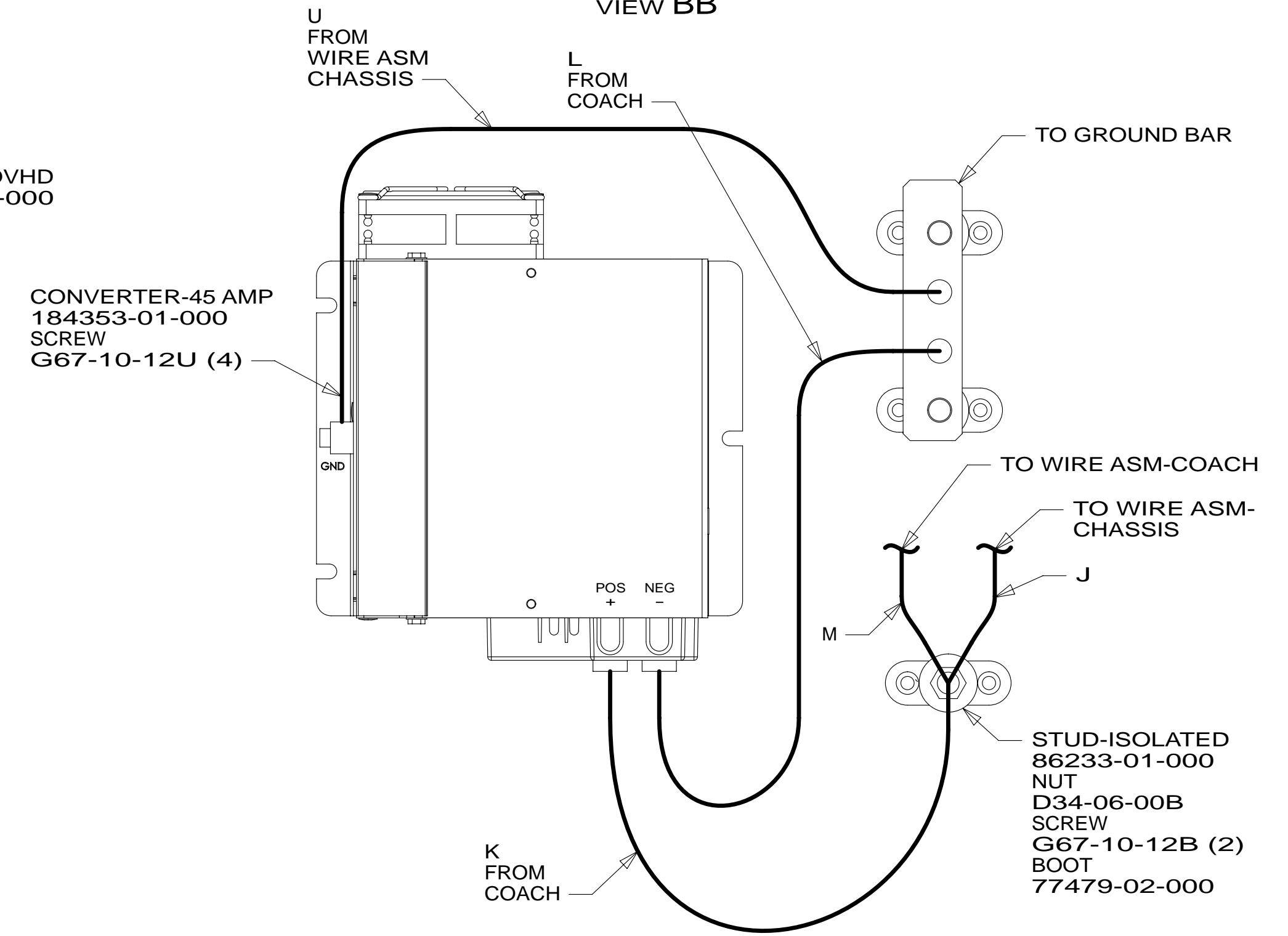
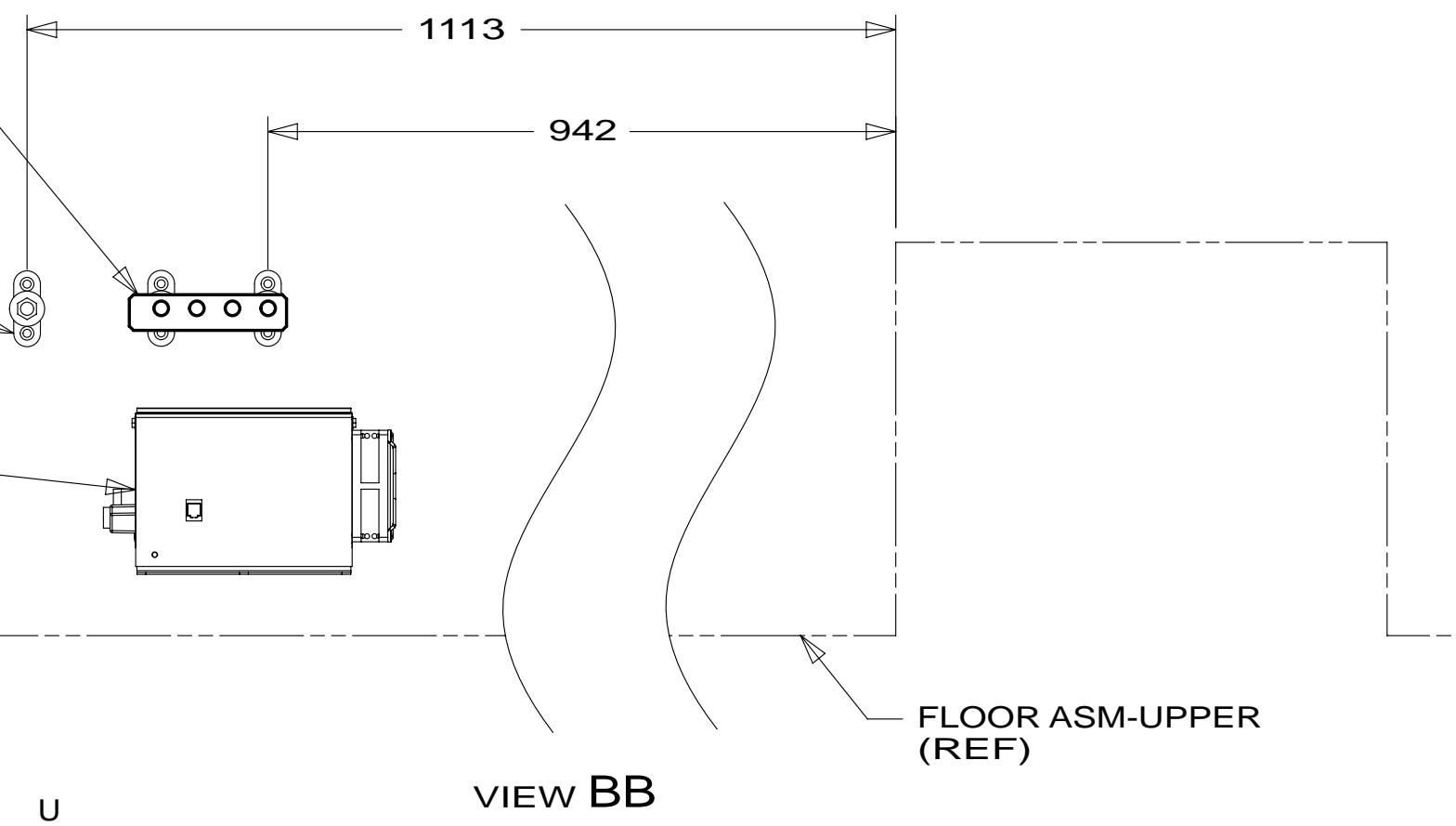
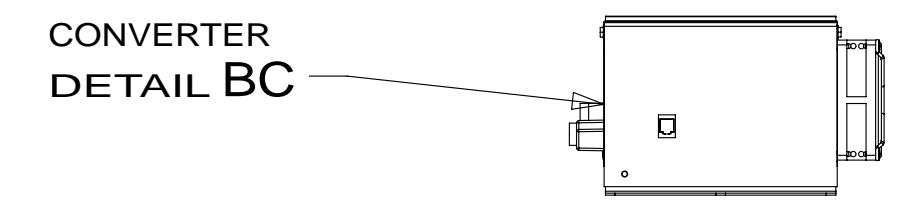
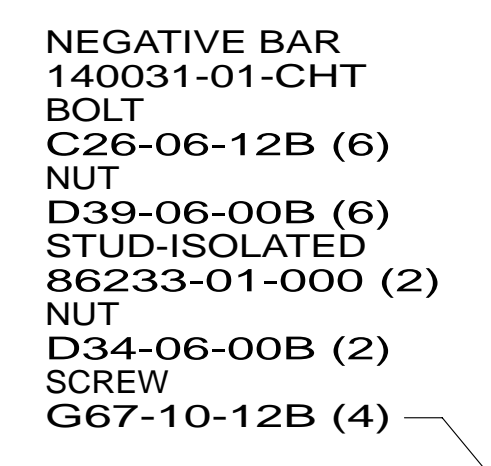
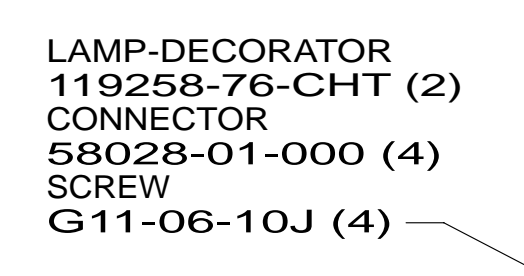
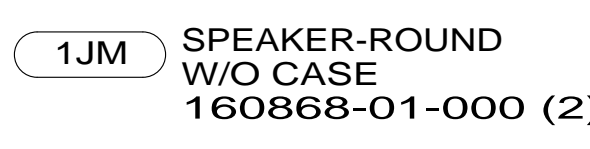
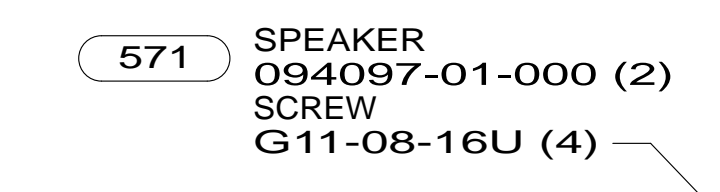
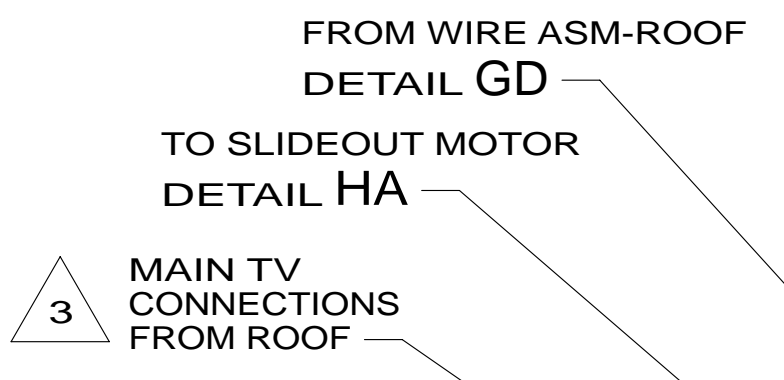
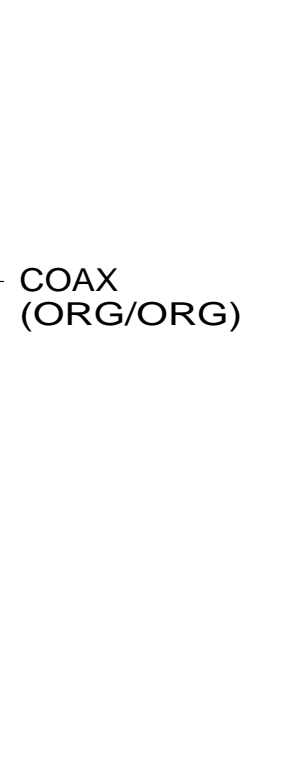
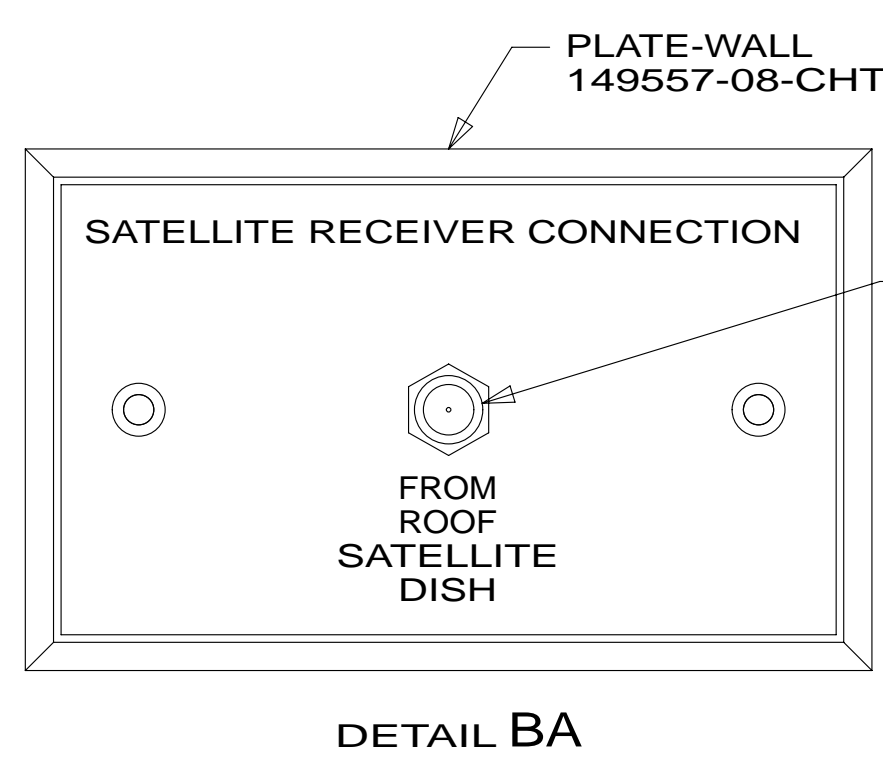


DETAIL AB

FOR ELECTRICAL TORQUE SPECIFICATIONS SEE DWG NO. 128783-01-000

X-X FOR ELECTRICAL CALLOUTS SEE DWG NO. 121339-01-000

* 186398



3 FOR ADDITIONAL INFORMATION SEE WIRING INSTL-TV/DVD.

2 WIRE PASSES THRU FLOOR IN THIS AREA.

1. AT MINIMUM ALL WIRES TO BE SUPPORTED AND SECURED PER CODE REQUIREMENTS. USE CLAMP 10495 OR 10497 OR WIRE TIE 8343 OR 108046 AND SCREW G67-XX-XXX OR G56-XX-XXX AS APPROPRIATE FOR INSTALLATION.

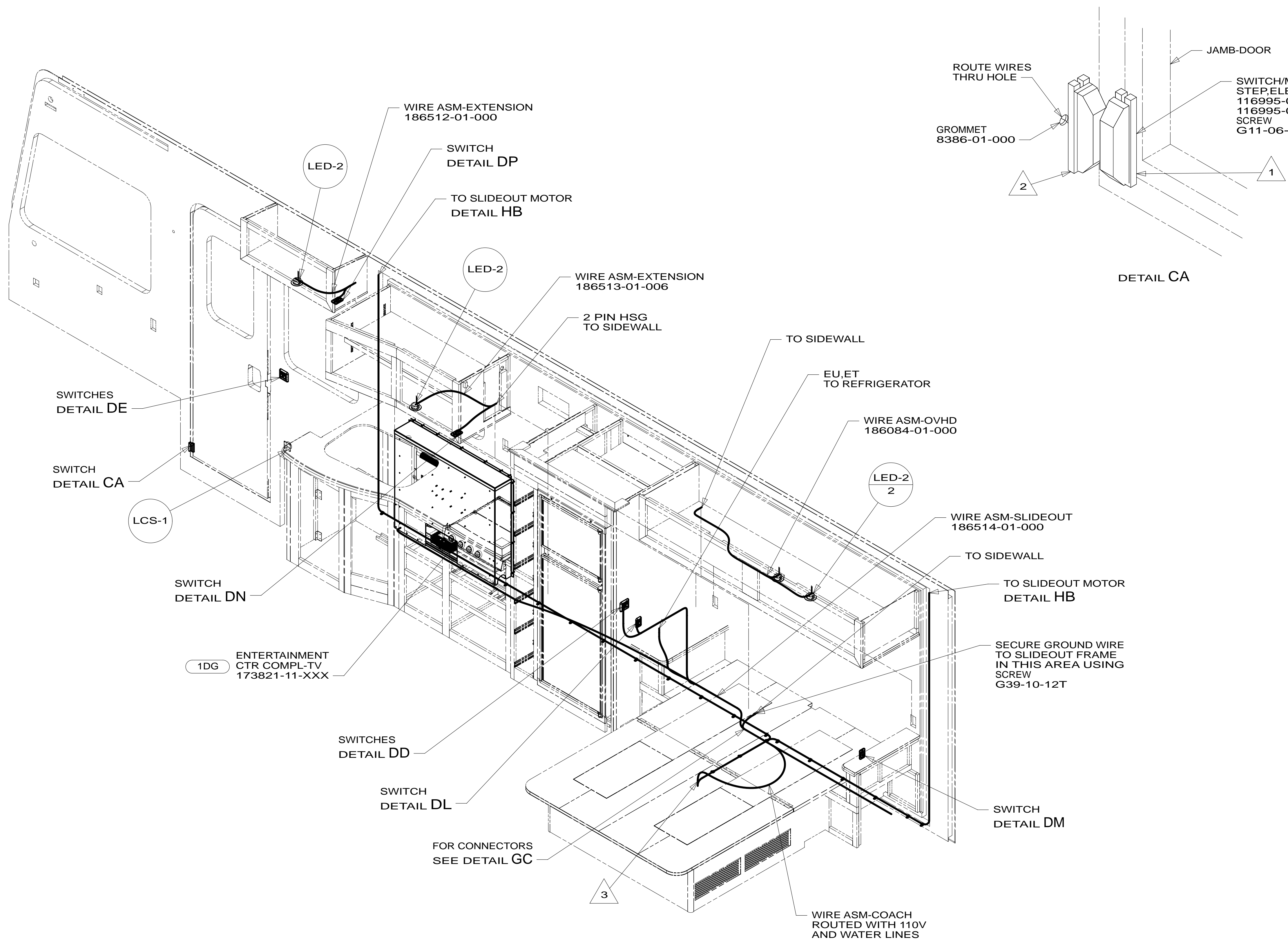
- 1JM HOME THEATER SOUND SYSTEM
- 571 RADIO SPEAKERS
- 1DG EXT ENTERTAIN CTR W/TV & CD
- 276 A/C ROOF-HI EFF (2) W/EMS
- 29R AC HEAT PUMP-2 HI EFFICIENCY
- 61K TV(REAR)-26" COLOR STEREO
- 265 CODES/STANDARDS-CSA/CMVSS
- 1B1 CODES/STANDARDS USA

1B1	265
FIRST USED	
14 D30A	
DO NOT SCALE DRAWING	
TITLE: WIRING INSTL-BODY,12V	
SHEET 2	PART NO 186398 REV
17-Dec-2013	

FOR ELECTRICAL TORQUE SPECIFICATIONS SEE DWG NO. 128783-01-000

FOR ELECTRICAL CALLOUTS SEE DWG NO. 121339-01-000

186398



- 92K EXTERIOR GRAPHICS PACKAGE #2
- 92A EXT FULL BODY PAINT PKG # 2
- 29R AC HEAT PUMP-2 HI EFFICIENCY
- 27G EXTERIOR GRAPHICS PACKAGE #1
- 27A EXT FULL BODY PAINT PKG #1
- 276 A/C ROOF-HI EFF (2) W/EMS
- 26H EXT GRAPHIC/PAINT-DLX PKG 2
- 26F EXT GRAPHIC/PAINT DLX PKG 1
- 24C EXT FULL BODY PAINT PKG # 3
- 1DG ENTERTAIN CTR/EXT TV-DVD
- 265 EXT ENTERTAIN CTR W/TV & CD
- 1B1 CODES/STANDARDS USA

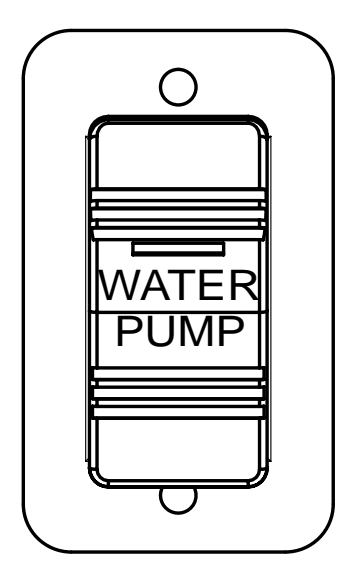
1B1	265
FIRST USED	
14 D30A	
DO NOT SCALE DRAWING	
TITLE: WIRING INSTL-BODY,12V	
SHEET 3	PART NO 186398 REV
17-Dec-2013	

4. ALL WIRES TO BE SECURED WITH CLAMP 10495 OR 10497 OR WIRE TIE 8343 OR 108046 EVERY 600MM, USE SCREW G67-XX-XXX OR G56-XX-XXX AS APPROPRIATE FOR INSTALLATION.
- 3 WIRE PASSES THRU FLOOR IN THIS AREA.
- 2 MOUNT SWITCH AND SPACER TO BLOCK ON JAMB, ADJUST HEIGHT TO MATCH MAGNET.
- 1 MOUNT MAGNET USING PILOT HOLES IN SCREEN DOOR FRAME. MOUNT WITH MAGNET TOWARD SWITCH.

FOR ELECTRICAL TORQUE SPECIFICATIONS SEE DWG NO. 128783-01-000

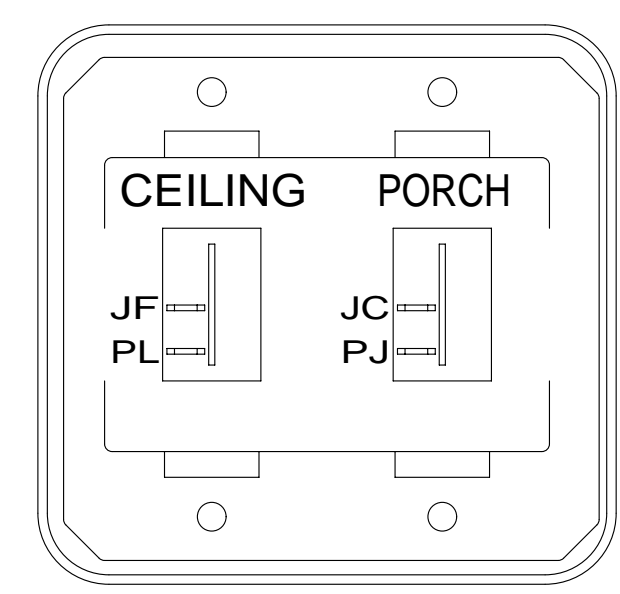
FOR ELECTRICAL CALLOUTS SEE DWG NO. 121339-01-000

* 186398



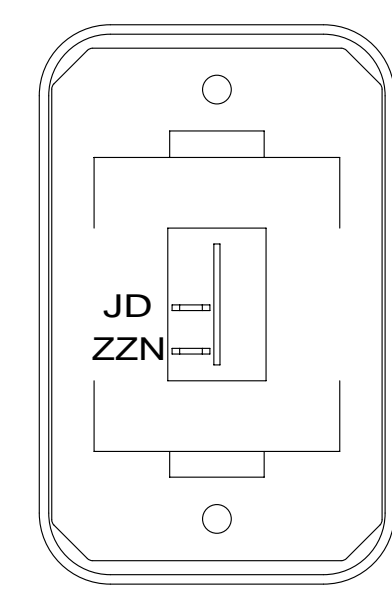
SWITCH-PUMP
108357-21-000
ACTUATOR
108356-23-CHT
PLATE
98351-07-CHT
SCREW
G11-06-10U (2)

DETAIL DA



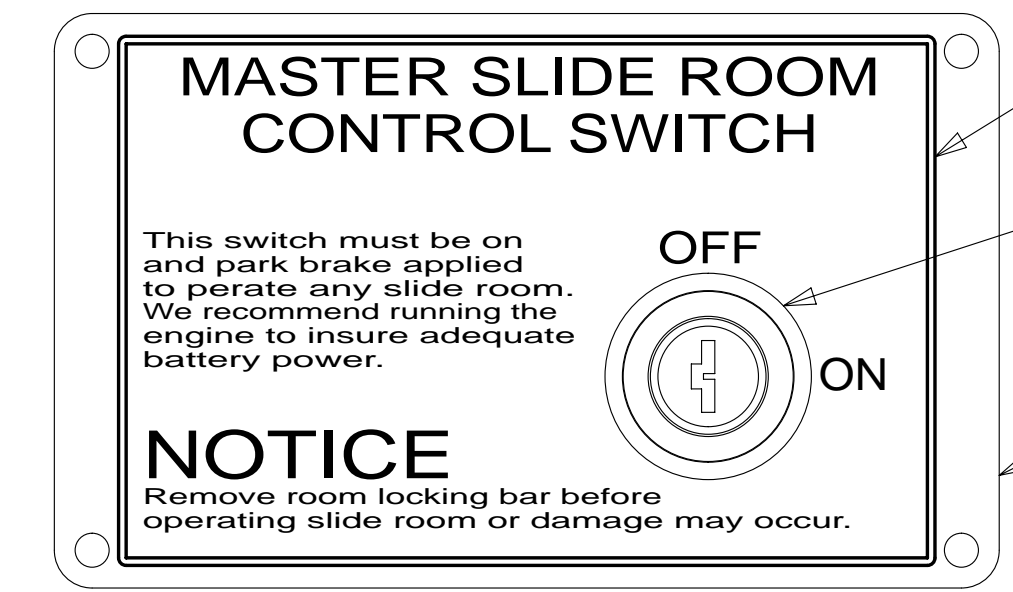
SWITCH-ROCKER
135740-01-CHT (2)
SWITCH-BASE
135741-02-CHT
SWITCH-BEZEL
135742-19-CHT
SCREW
G11-08-08U (4)

DETAIL DE

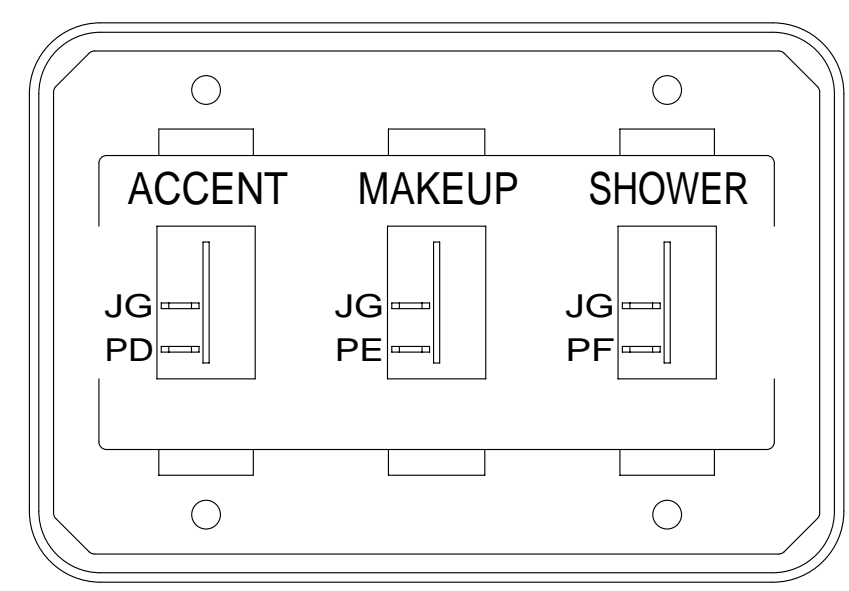


SWITCH-ROCKER
135740-01-CHT
SWITCH-BASE
135741-01-CHT
SWITCH-BEZEL
135742-01-CHT
SCREW
G11-08-08U (2)

DETAIL DL

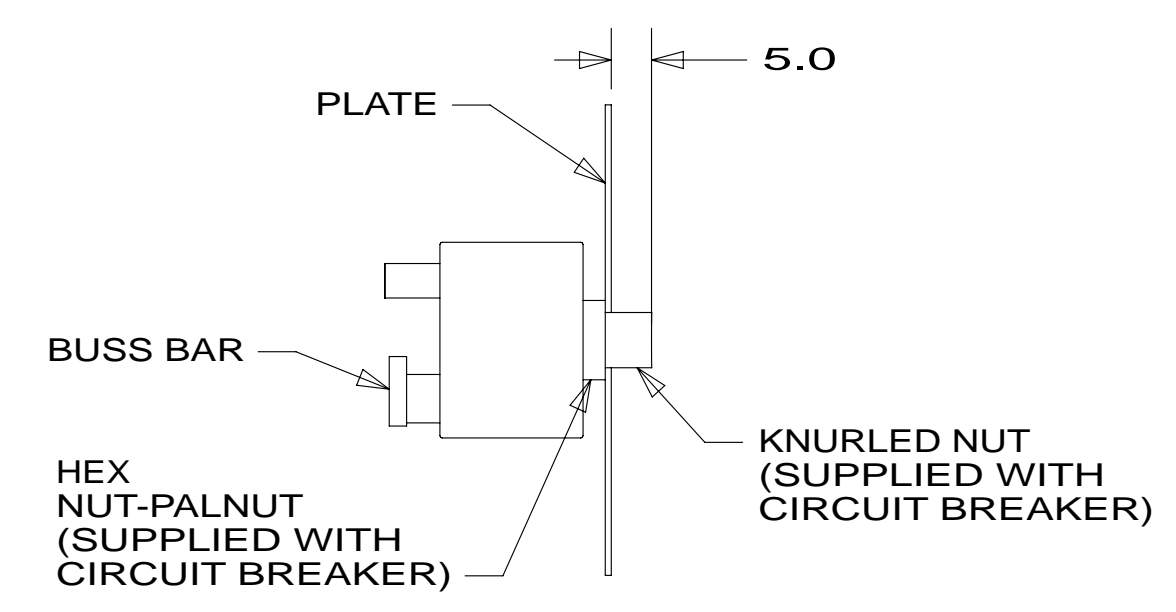


LABEL-SLIDEROOM CONTROL, MAN
163988-01-CHT
SWITCH-KEY, SPST-ILLINOIS LCK
163097-01-000
CONNECTS TO CIRCUITS DY,DDJ
PLATE-KEY, SLIDE ROOM
163987-01-CHT
SCREW
76790-05-000 (4)

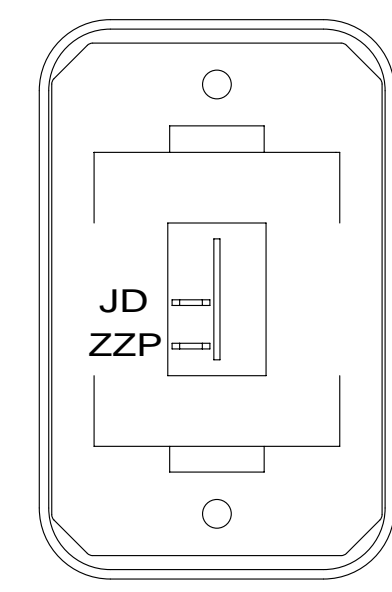


SWITCH-ROCKER
135740-01-CHT (3)
SWITCH-BASE
135741-03-CHT
SWITCH-BEZEL
135742-47-CHT
SCREW
G11-08-08U (4)

DETAIL DB



DETAIL DF-DF

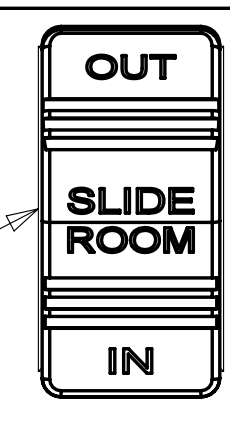


SWITCH-ROCKER
135740-01-CHT
SWITCH-BASE
135741-01-CHT
SWITCH-BEZEL
135742-01-CHT
SCREW
G11-08-08U (2)

DETAIL DM

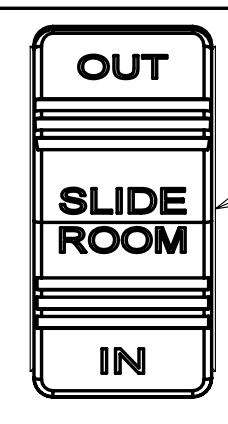
LABEL-SLIDEOUT, PASSENGER,REAR
163992-03-CHT

PASSENGER'S SIDE REAR



SWITCH-ROCKER
108357-06-000
ACTUATOR-SWITCH
108356-24-CHT (BBM,DT,BBN)

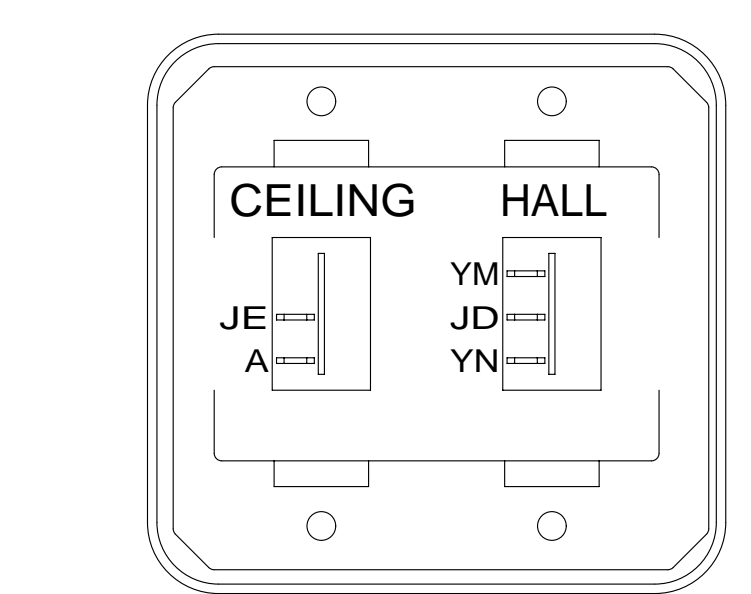
DRIVER'S SIDE FRONT



SWITCH-ROCKER
108357-06-000
ACTUATOR-SWITCH
108356-24-CHT (DR,DT,DU)

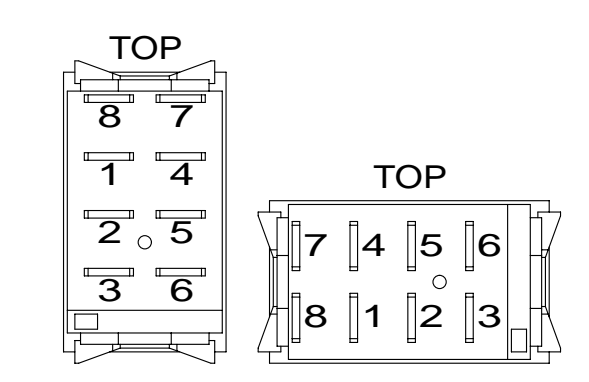
WARNING CRUSH HAZARD. Keep people and objects clear of the inside and the outside of the slideout room when operating. Failure to comply could result in death or serious injury.

LABEL-WARNING, SLIDEOUT
116549-01-000

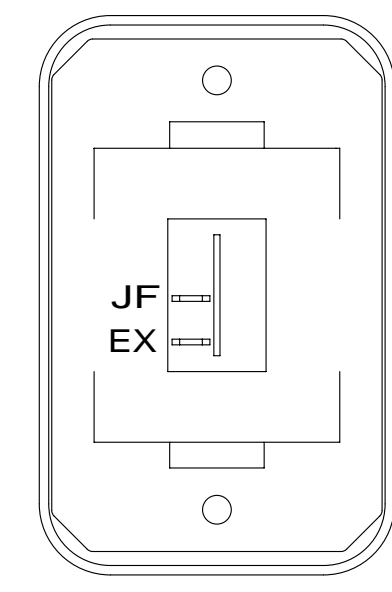


SWITCH-ROCKER
135740-01-CHT
135740-02-CHT
SWITCH-BASE
135741-02-CHT
SWITCH-BEZEL
135742-16-CHT
SCREW
G11-08-08U (4)

DETAIL DC



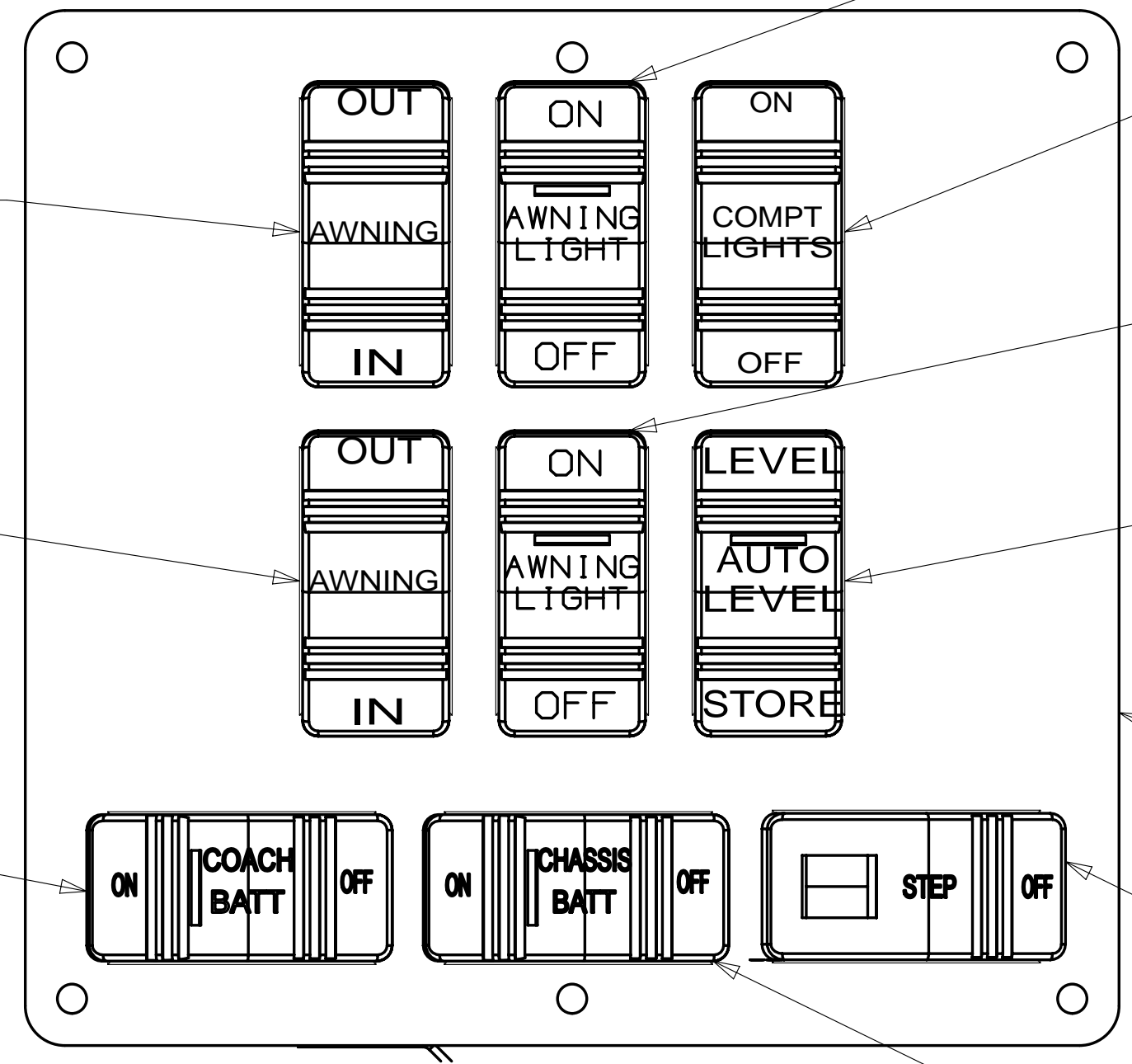
DETAIL DK



SWITCH-ROCKER
135740-01-CHT
SWITCH-BASE
135741-01-CHT
SWITCH-BEZEL
135742-01-CHT
SCREW
G11-08-08U (2)

DETAIL DN

SWITCH-AWNING
108357-06-000
ACTUATOR
108356-12-CHT
FFD,FFE,TTP,JJS



DETAIL DJ

SWITCH-AWNING LIGHTS
108357-14-000
ACTUATOR-SWITCH
108356-28-CHT

SWITCH-COMPT LIGHTS
108357-01-000
ACTUATOR-SWITCH
108356-14-CHT
CIRCUITS WC,WA

SWITCH-AWNING LIGHTS
108357-14-000
ACTUATOR-SWITCH
108356-28-CHT

SWITCH-AUTO LEVEL
108357-18-000
ACTUATOR-SWITCH
108356-15-CHT
SSD,SSE,SSC,SSE,SSF

PLATE-SWITCH
158431-24-CHT
SCREW
G11-06-10U (6)

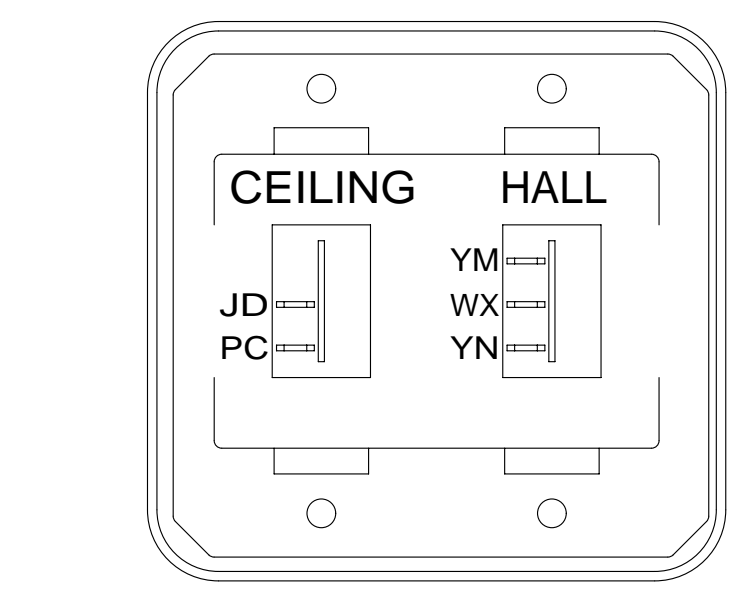
STEP-SWITCH
108357-19-000
CIRCUITS ER,ES

SWITCH-AWNING
108357-06-000
ACTUATOR
108356-12-CHT
FFD,FFE,FFR,JJR

SWITCH-COACH BATTERY
108357-18-000
ACTUATOR-SWITCH
108356-19-CHT
CIRCUITS
KF,LJ,LG,LH,WC
WIRE ASM-THERMISTOR
186796-01-000

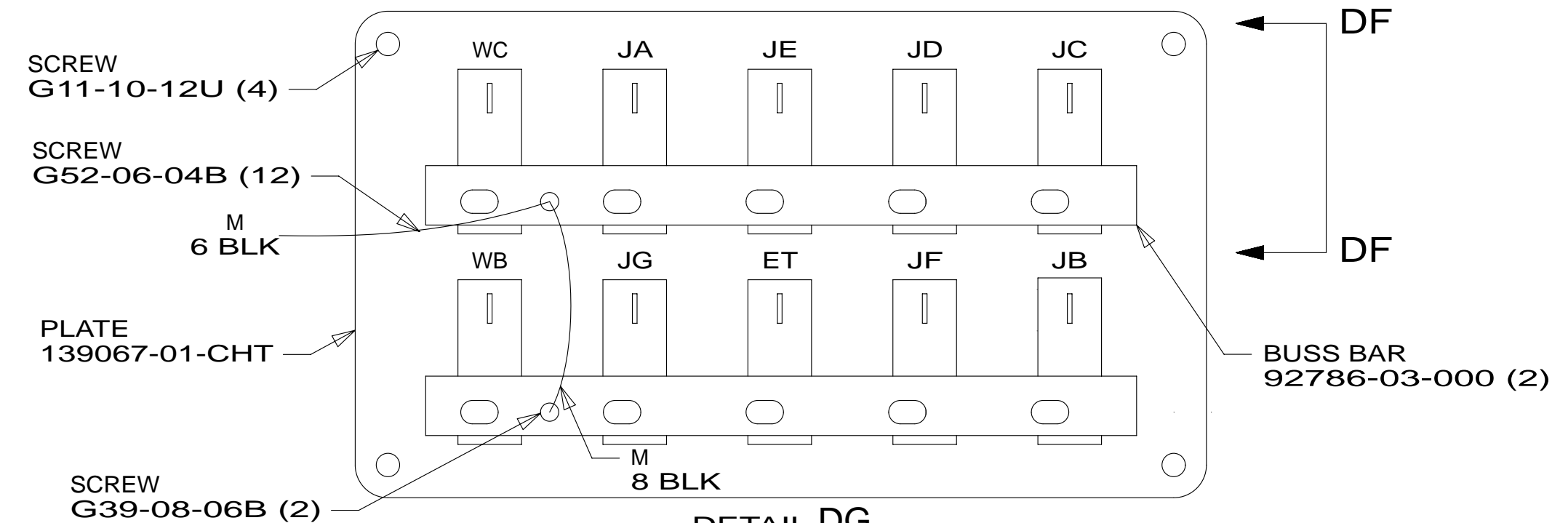
SWITCH-CHASSIS BATTERY
108357-18-000
ACTUATOR-SWITCH
108356-20-CHT
CIRCUITS
TTY,TTZ,MK,UUB,UUC
WIRE ASM-THERMISTOR
186796-01-000

DETAIL DH 1

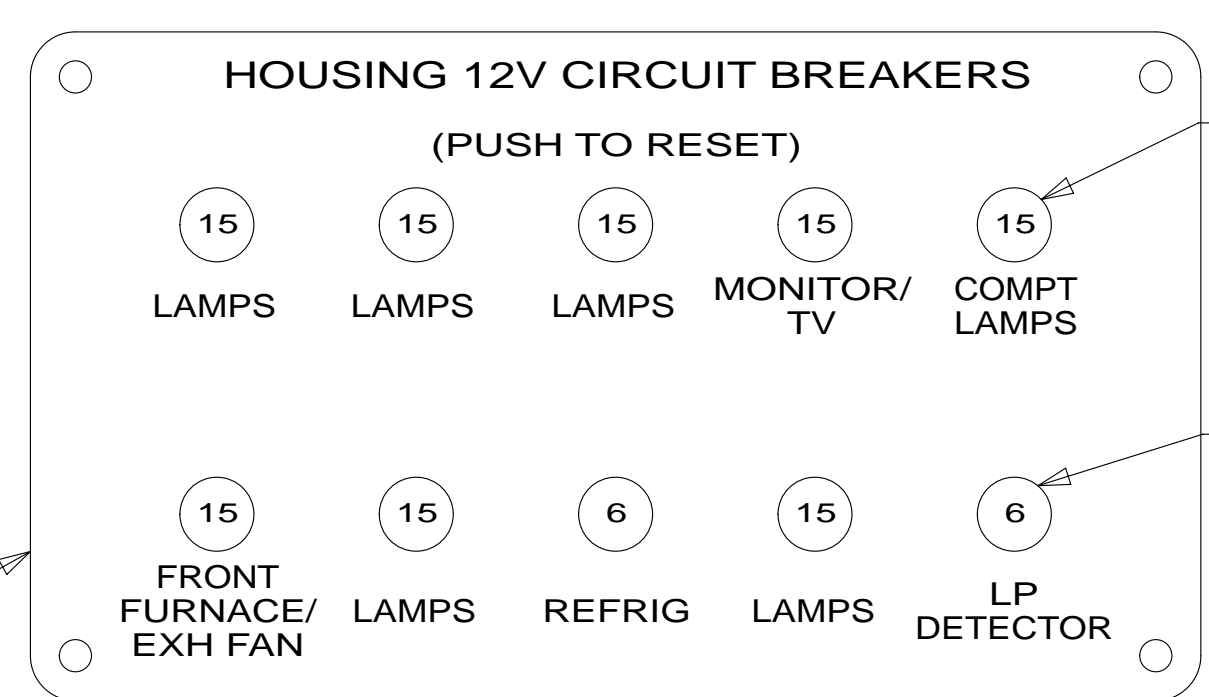


SWITCH-ROCKER
135740-01-CHT
135740-02-CHT
SWITCH-BASE
135741-02-CHT
SWITCH-BEZEL
135742-16-CHT
SCREW
G11-08-08U (4)

DETAIL DD



DETAIL DG (BACK VIEW)

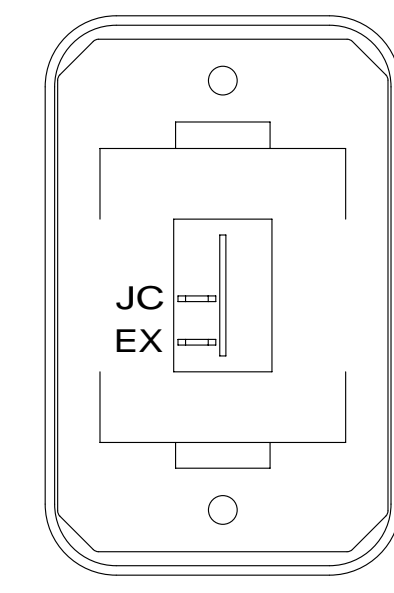


DETAIL DG (FRONT VIEW)

CIRCUIT BREAKER
93654-02-000 (8)

CIRCUIT BREAKER
93654-01-000 (2)

LABEL
92547-06-000



DETAIL DP

SWITCH-ROCKER
135740-01-CHT
SWITCH-BASE
135741-01-CHT
SWITCH-BEZEL
135742-01-CHT
SCREW
G11-08-08U (2)

FOR ELECTRICAL TORQUE SPECIFICATIONS SEE DWG NO. 128783-01-000

FOR ELECTRICAL CALLOUTS SEE DWG NO. 121339-01-000

265 CODES/STANDARDS-CSA/CMVSS

1B1 CODES/STANDARDS USA

1B1 265

FIRST USED
14 D30A

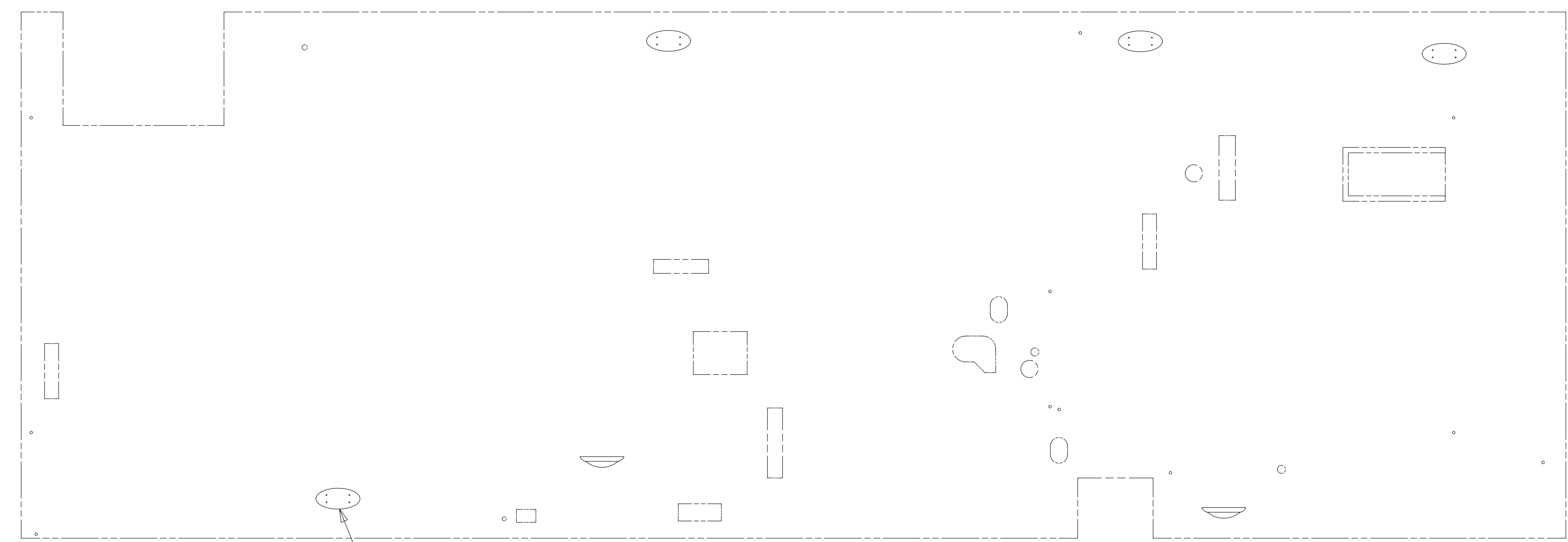
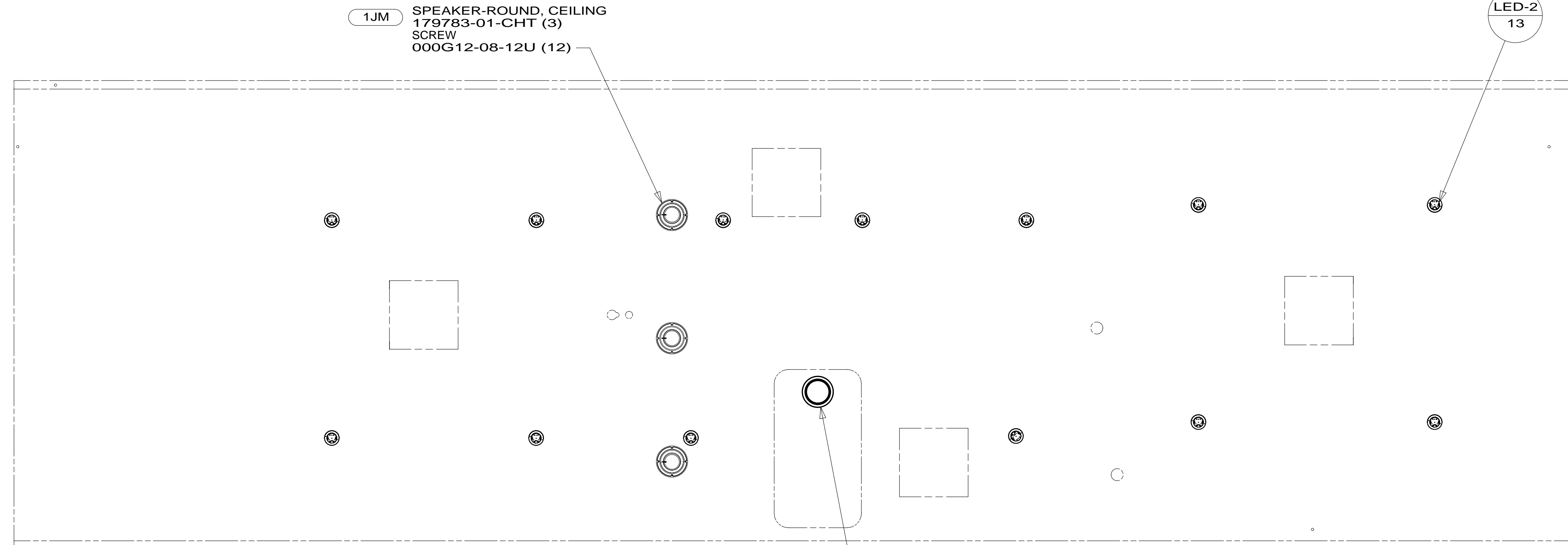
DO NOT SCALE DRAWING

TITLE: **WIRING INSTL-BODY,12V**

SHEET 4 PART NO **186398** REV

NOTES:
1 FOR SWITCH ORIENTATION SEE DETAIL DK.

* 186398



1JM SPEAKER-ROUND, CEILING
 179783-01-CHT (3)
 SCREW
 000G12-08-12U (12)

LED-2
 13

LSH-3

LO1-3 BULB-LED
 176793-01-000 (6)
 WASHER-PLASTIC
 180671-02-CHT (4)

1

1 REMOVE BULB SUPPLIED WITH LAMP, SEND BULB TO STOCK AS PART NUMBER 117805-02-000, REPLACE WITH LED BULB.

NOTES:

FOR ELECTRICAL TORQUE SPECIFICATIONS SEE DWG NO. 128783-01-000

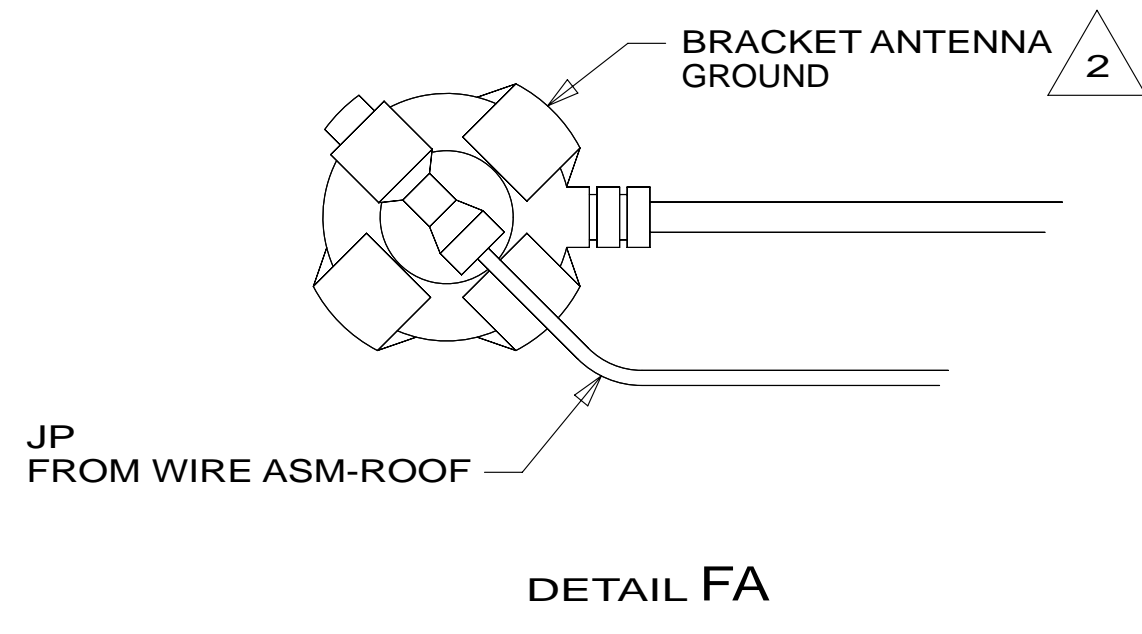
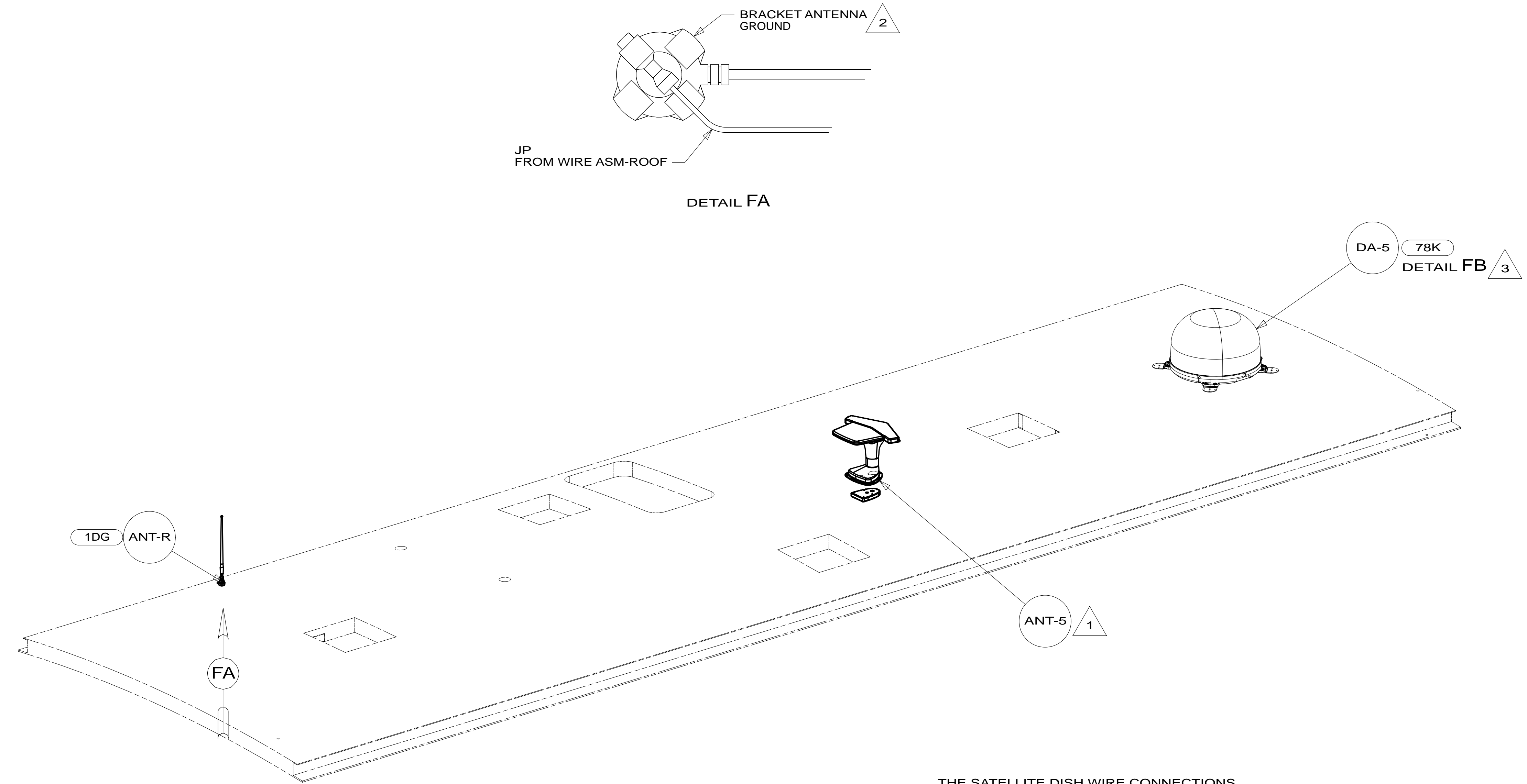
FOR ELECTRICAL CALLOUTS SEE DWG NO. 121339-01-000

- 1JM HOME THEATER SOUND SYSTEM
- 265 CODES/STANDARDS-CSA/CMVSS
- 1B1 CODES/STANDARDS USA

1B1 265

FIRST USED	14 D30A	
DO NOT SCALE DRAWING		
TITLE: WIRING INSTL-BODY, 12V		
SHEET 5	PART NO 186398	REV

* 186398 *

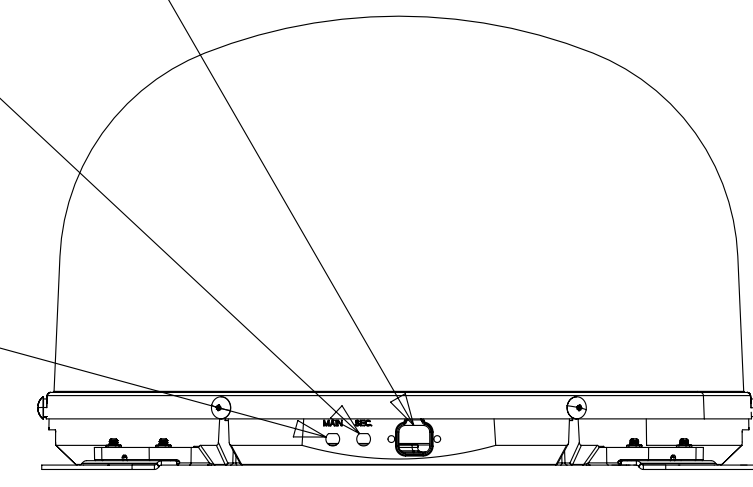
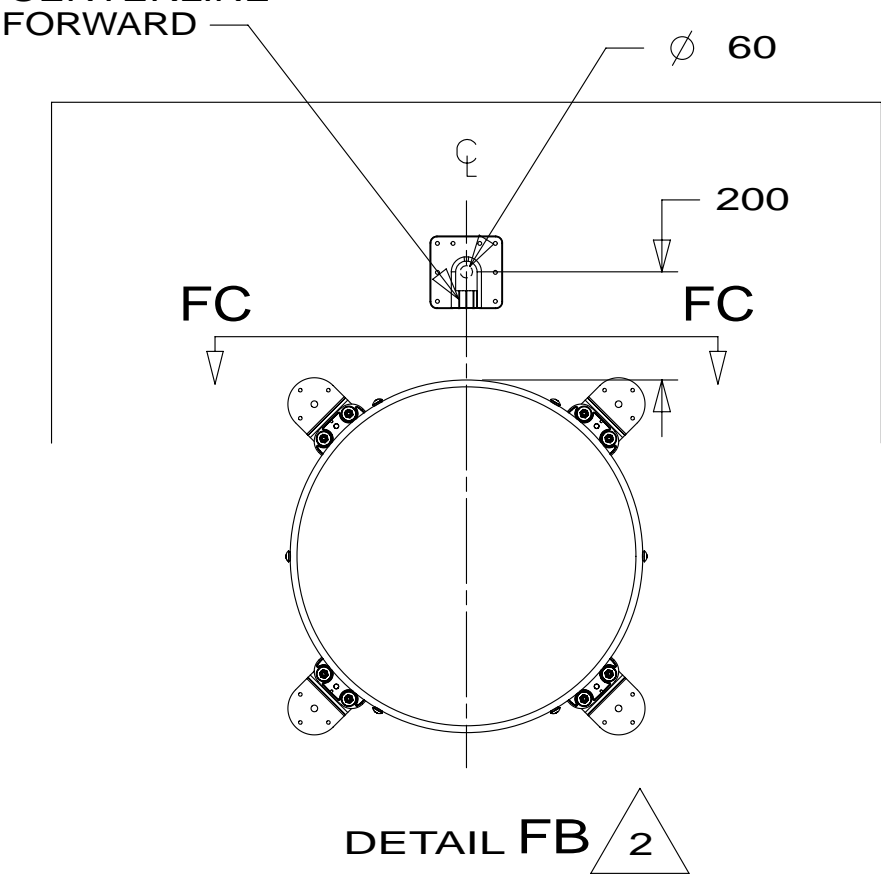


THE SATELLITE DISH WIRE CONNECTIONS ARE TO BE PLACED ON THE CENTERLINE OF THE MOTORHOME FACING FORWARD

CONNECT 2-PIN HOUSING FROM ROOF ASM TO SATELLITE DISH HERE AND ADD CONVOLUTED TUBING

CONNECT CABLE ASM COAX (ORG-2) FROM ROOF ASM TO SEC INPUT ON SATELLITE DISH

CONNECT CABLE ASM COAX (ORG) FROM ROOF ASM TO MAIN INPUT ON SATELLITE DISH



FOR ELECTRICAL TORQUE SPECIFICATIONS SEE DWG NO. 128783-01-000

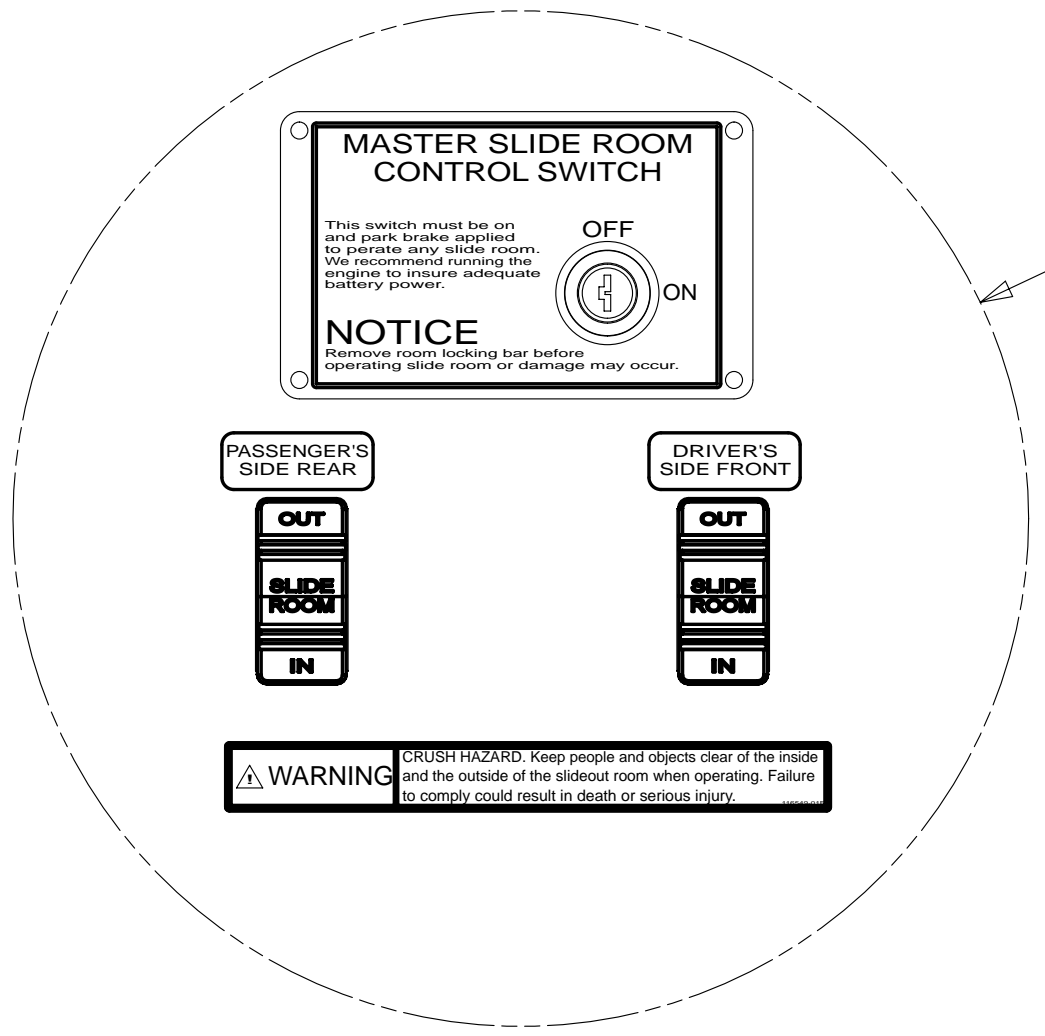
FOR ELECTRICAL CALLOUTS SEE DWG NO. 121339-01-000

- (78K) SATELLITE TV SYSTEM AUTO
- (1DG) EXT ENTERTAIN CTR W/TV & CD
- (265) CODES/STANDARDS-CSA/CMVSS
- (1B1) CODES/STANDARDS USA

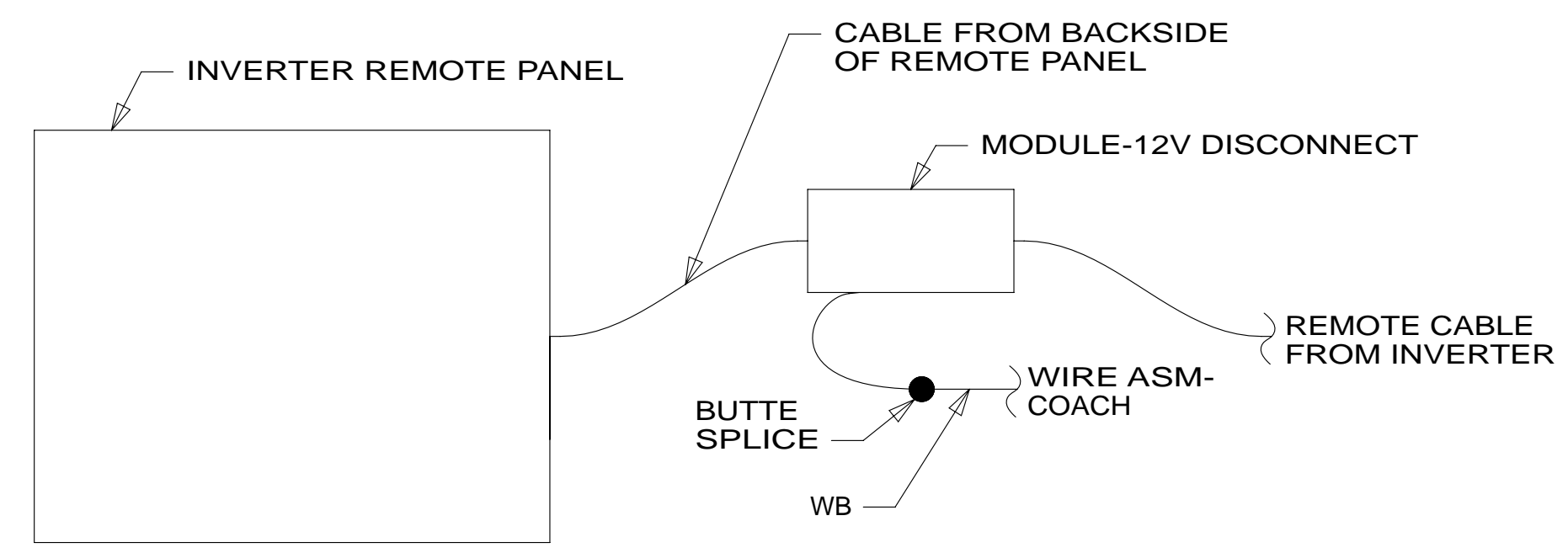
FIRST USED	14 D30A	
DO NOT SCALE DRAWING		
TITLE: WIRING INSTL-BODY, 12V		
SHEET 6	PART NO 186398	REV

- NOTES:
- (3) SEE MANUFACTURER'S INSTALLATION FOR ADDITIONAL INFORMATION.
 - (2) WRAP BRACKET LEGS AROUND ANTENNA BASE.
 - (1) SEE ANTENNA INSTALLATION MANUAL FOR CORRECT INSTALLATION PROCEDURE.

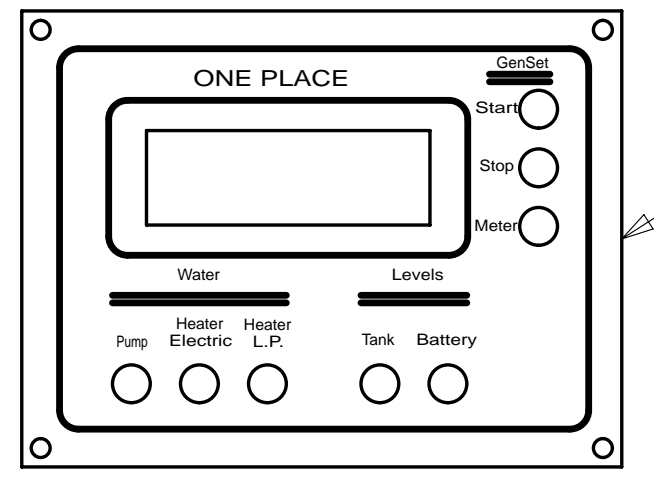
* 186398 * A



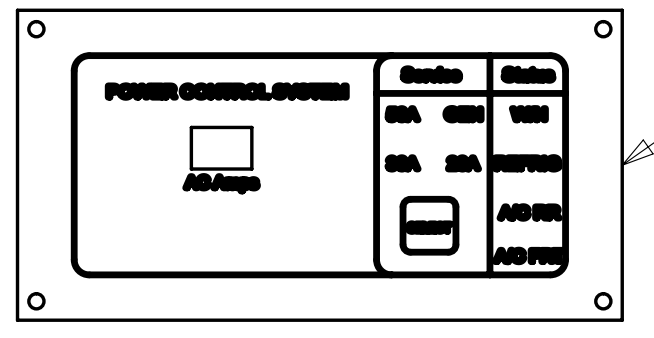
SWITCHES
DETAIL DJ



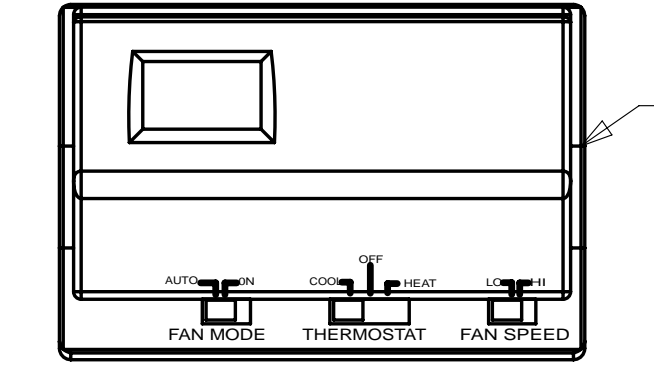
DETAIL GB 401



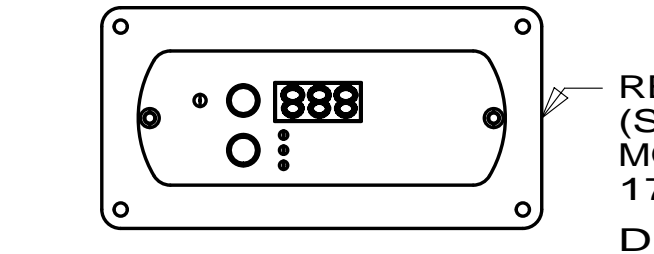
PANEL-MONITOR
175724-01-000
SCREW
G11-08-08U (4)



PANEL-MONITOR,EMS
174295-06-000



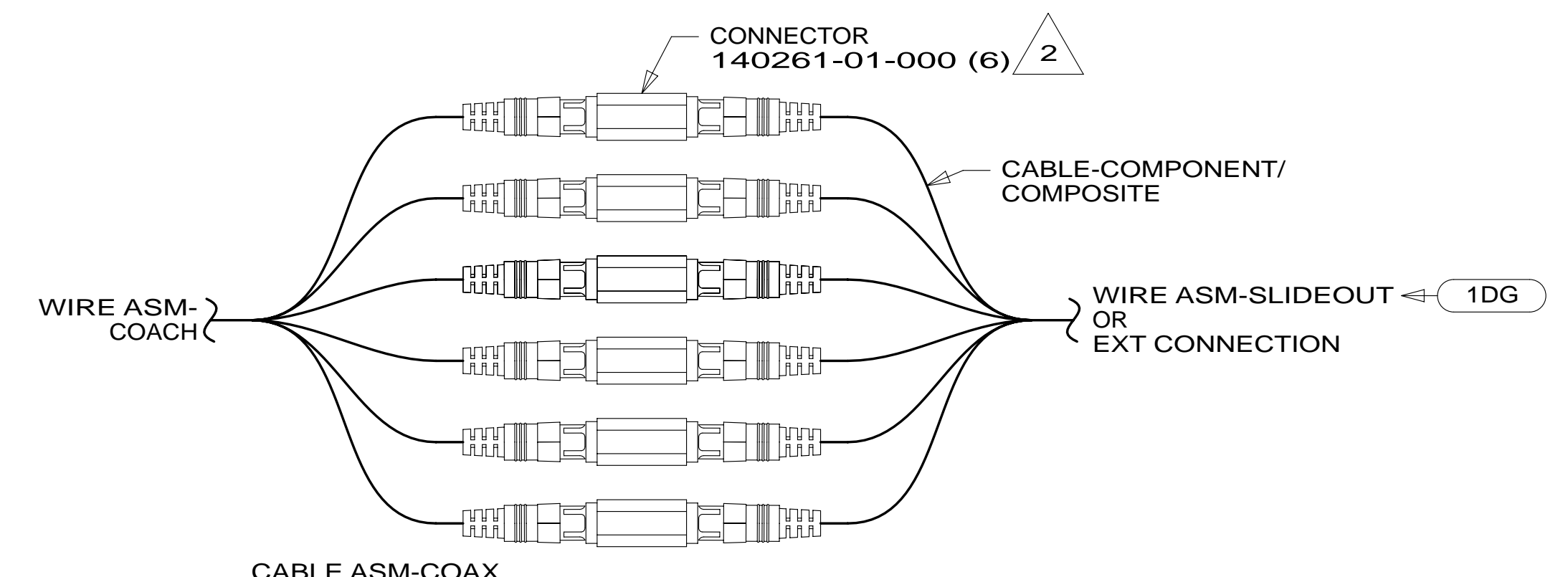
THERMOSTAT
135618-03-CHT (276)
135618-01-CHT (29R)
SCREW
G13-07-12B (2)
GASKET-THERMOSTAT
134588-09-000



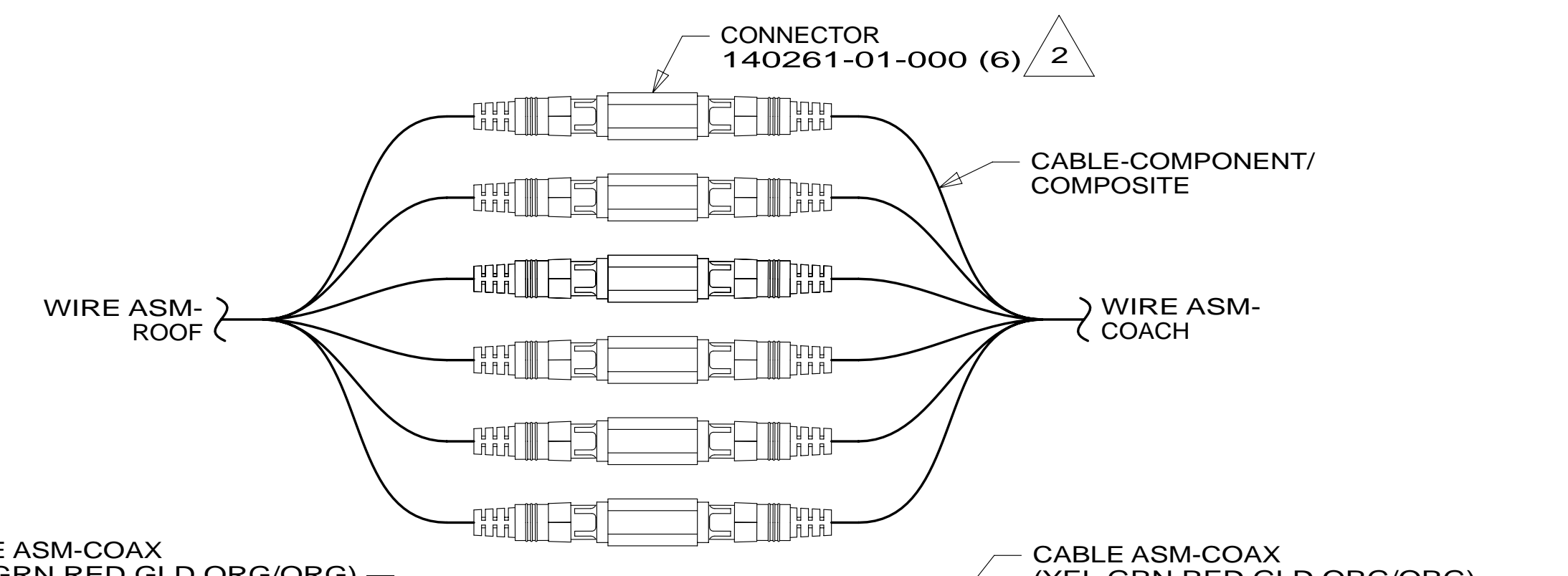
REMOTE PANEL-INVERTER
(SUPPLIED WITH INVERTER)
MODULE 12V-DISCONNECT
173355-01-000
DETAIL GB

VIEW GA

- NOTES:
- 3 DATA CABLE FOR EMS IS MARKED WITH RED TAPE.
 - 2 WRAP BOTH ENDS WITH TAPE 8363-01-000 TO SECURE CONNECTION.
 - 1 INSTALL GASKET ON BACK SIDE OF ONE PLACE AFTER INTALLATION OF THERMOSTAT,MAKE SURE THAT THE GASKET COVERS AND SEALS THE THAT THE WIRES PASS THROUGH.



DETAIL GC



DETAIL GD

- 401 INVERTER-DC/AC, 1000 WATT
- 1DG EXT ENTERTAIN CTR W/TV & CD
- 29R AC HEAT PUMP-2 HI EFFICIENCY
- 276 A/C ROOF-HI EFF (2) W/EMS
- 265 CODES/STANDARDS-CSA/CMVSS
- 1B1 CODES/STANDARDS USA

FIRST USED	
14 D30A	
DO NOT SCALE DRAWING	
WIRING INSTL-BODY,12V	
SHEET 7	PART NO 186398 REV

FOR ELECTRICAL TORQUE SPECIFICATIONS SEE DWG NO. 128783-01-000

FOR ELECTRICAL CALLOUTS SEE DWG NO. 121339-01-000

* 186398

SLIDEOUT WIRES FROM WIRE ASM-CHASSIS

GROMMET 016188-11-000

CLAMP 010497-03-000 (3)
SCREW G11-10-16B (3)

TO SLIDEOUT MOTOR CABLE MARKED WITH GREEN TAPE

312

2211

TO SLIDEOUT MOTOR CABLE MARKED WITH YELLOW TAPE

CLAMP 010495-02-000 (11)
SCREW G11-10-16B (11)

WIRES ROUTE THRU HOLE IN SLIDEOUT FLOOR HERE

UPPER FLOOR (REF)

DETAIL HA (FRONT LEFT)

TO SLIDEOUT MOTOR CABLE MARKED WITH BROWN TAPE

3641

1434

TO SLIDEOUT MOTOR CABLE MARKED WITH LIGHT YELLOW TAPE

CLAMP 010495-02-000 (22)
SCREW G11-10-16B (22)

UPPER FLOOR (REF)

DETAIL HB (REAR RIGHT)

265 CODES/STANDARDS-CSA/CMVSS

1B1 CODES/STANDARDS USA

1B1 265

FIRST USED 14 D30A

DO NOT SCALE DRAWING

TITLE: WIRING INSTL-BODY,12V

SHEET 8 PART NO 186398 REV

FOR ELECTRICAL TORQUE SPECIFICATIONS SEE DWG NO. 128783-01-000

FOR ELECTRICAL CALLOUTS SEE DWG NO. 121339-01-000

* 186398 * A