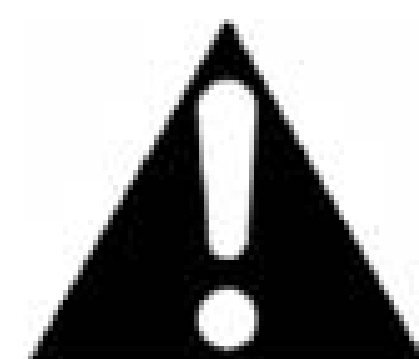




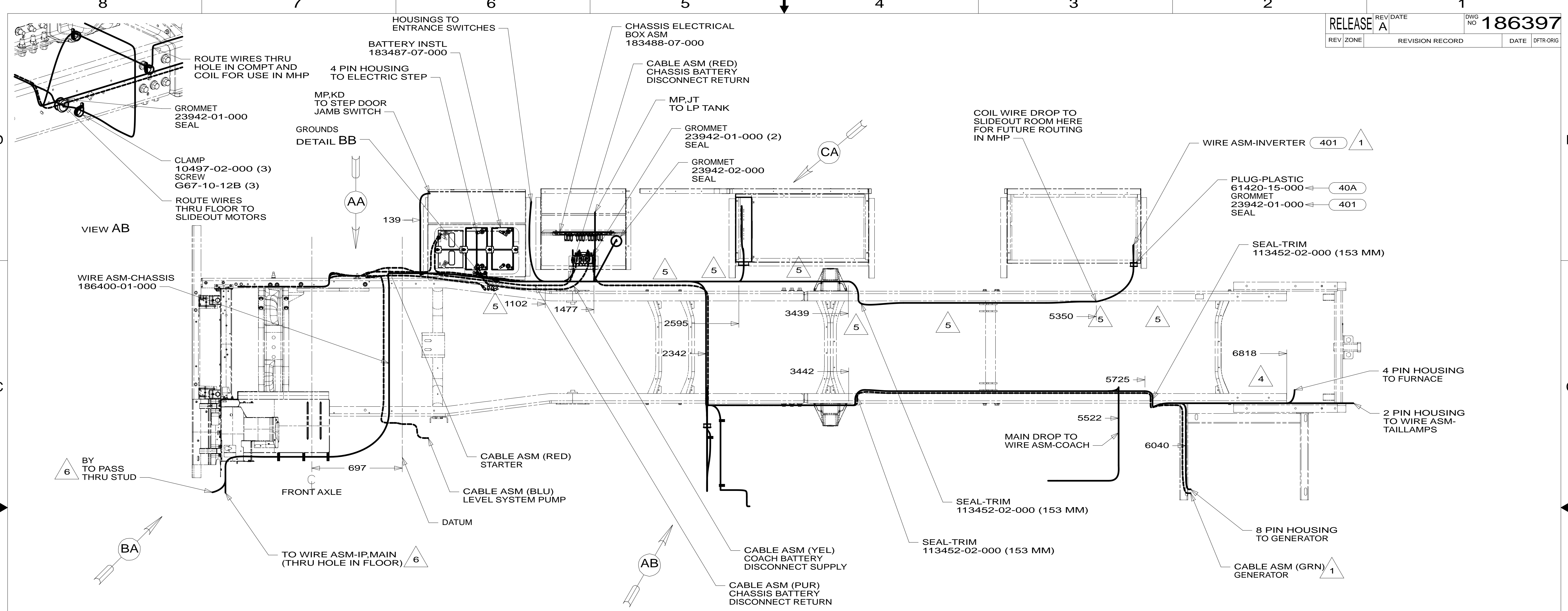
DANGER

Danger of electrical shock, burns or death. Always remove all power sources before attempting any repair, service or diagnostic work. Power can be present from shore power, generator, inverter or battery. All power sources must be disabled and secured before performing any service.



CAUTION

If you lack the skills, tools or equipment to perform diagnostic or repair work leave such work to an authorized Winnebago Industries dealer or other qualified shop.



- 10

SUPPLIED WITH CHASSIS
- 9

CUT CHASSIS SUPPLIED BATTERY GROUND CABLE 700MM FROM BATTERY TERMINAL AND ADD TERMINAL 8348-01-000 TO CUT END.
- 8

COVER SHARP EDGES WHERE WIRE CROSSES FRAME RAILS.
- 7

CUT CHASSIS SUPPLIED POSITIVE BATTERY CABLE 150MM FROM BATTERY TERMINAL END,DISCARD TERMINAL END AND SEPARATE WIRES. ADD TERMINAL 8348-01-000 AND HEAT SHRINK 176567-04-000 TO RED CABLE (CHASSIS STARTER) AND COMBINE YELLOW (CHASSIS POWER DISTRIBUTION) AND BLACK/ORANGE (CHASSIS ALTERNATOR) WIRES TOGETHER AND ADD TERMINAL 8348-01-000 AND HEAT SHRINK 176567-02-000. COIL EXCESS CABLE ALONG FRAME RAIL JUST BEHIND RADIATOR AND TIE UP WITH TIE-WIRE 8343-04-000.
- 6

SEE WIRING INSTL-FRONT END FOR ADDITIONAL INFORMATION.
- 5

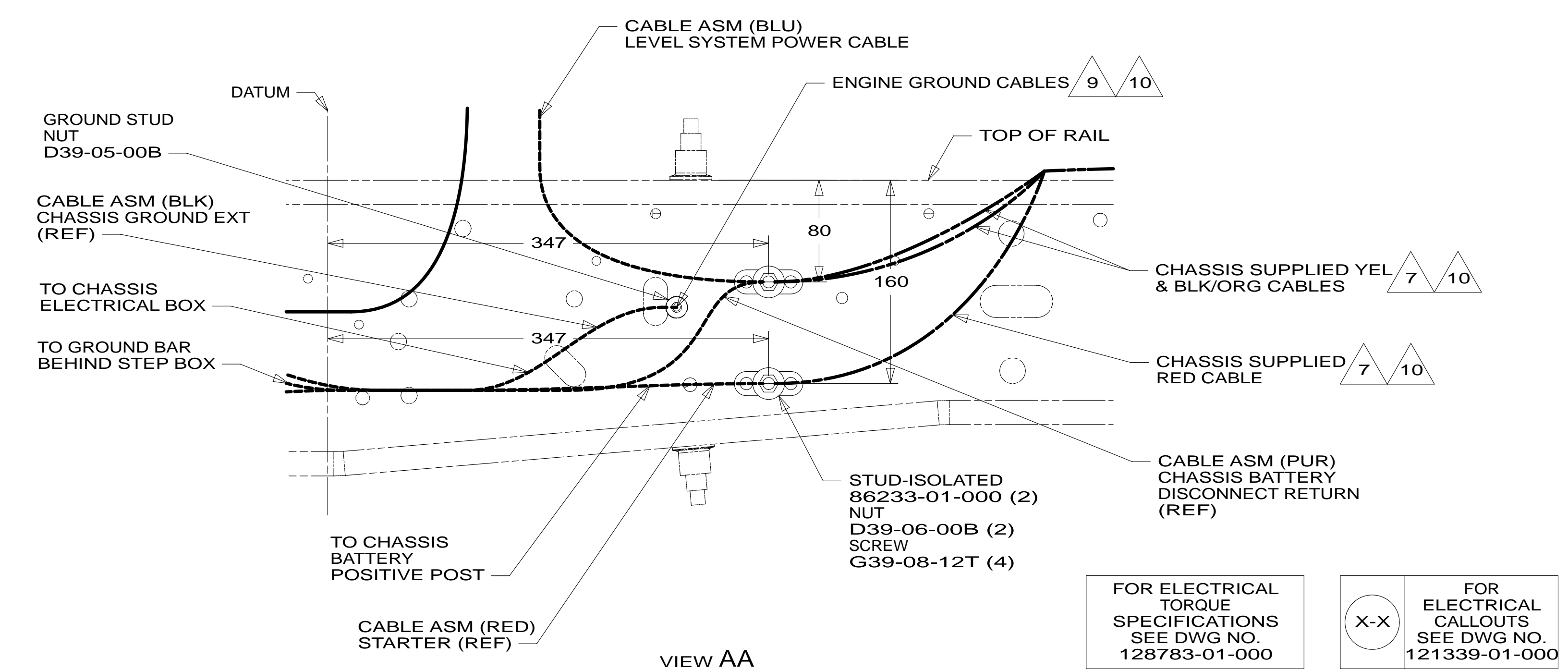
CLAMP 83610-01-000, SCREW G11-10-16B.
- 4

WIRE TIE 8343-04-000. FASTEN EVERY 600MM MINIMUM.
3.

ALL DIMENSIONS ARE FROM DATUM UNLESS OTHERWISE SPECIFIED.
2.

SECURE CONDUIT 41953, TAB AS REQUIRED, OVER ALL WIRES IN CONTACT WITH SHARP EDGES.
- 1

SEE BATTERY INSTL FOR ADDITIONAL INFORMATION.



40A

INVERTER-DC/AC WITHOUT

401

INVERTER-DC/AC, 1000 WATT

265

CODES/STANDARDS-CSA/CMVSS

1B1

CODES/STANDARDS USA

1B1

265

WINNEBAGO INDUSTRIES

COPYRIGHT 2013 WINNEBAGO INDUSTRIES, INC.

DFT-ORIG

CHKR

P.E.

M.E.

DSNR

ORIG. DATE

ALL DIMENSIONS ARE IN MILLIMETERS

FIRST USED

14 D30A

UNSPECIFIED TOLERANCES ARE:

WHOLE DIM (X) ± 3

ONE-PLACE (X.X) ± 1.5

TWO-PLACE (X.XX) ± 0.50

ANGLE ± 1°

THIRD ANGLE PROJECTION

DO NOT SCALE DRAWING

REFER TO ES0018 FOR FASTENER TIGHTENING GUIDELINES

TITLE: WIRING INSTL-CHASSIS

SHEET 1 OF 3

PART NO 186397

REV

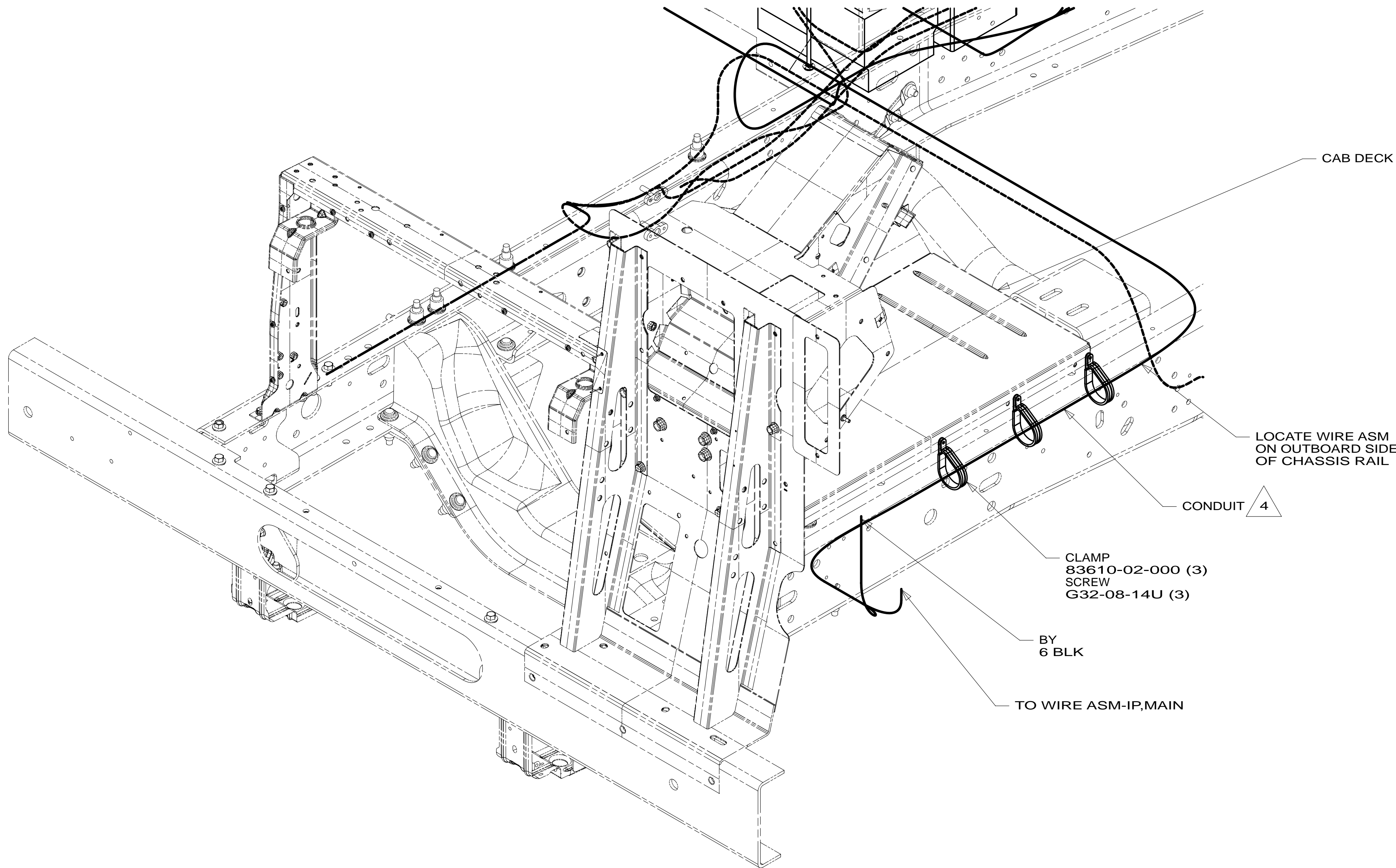
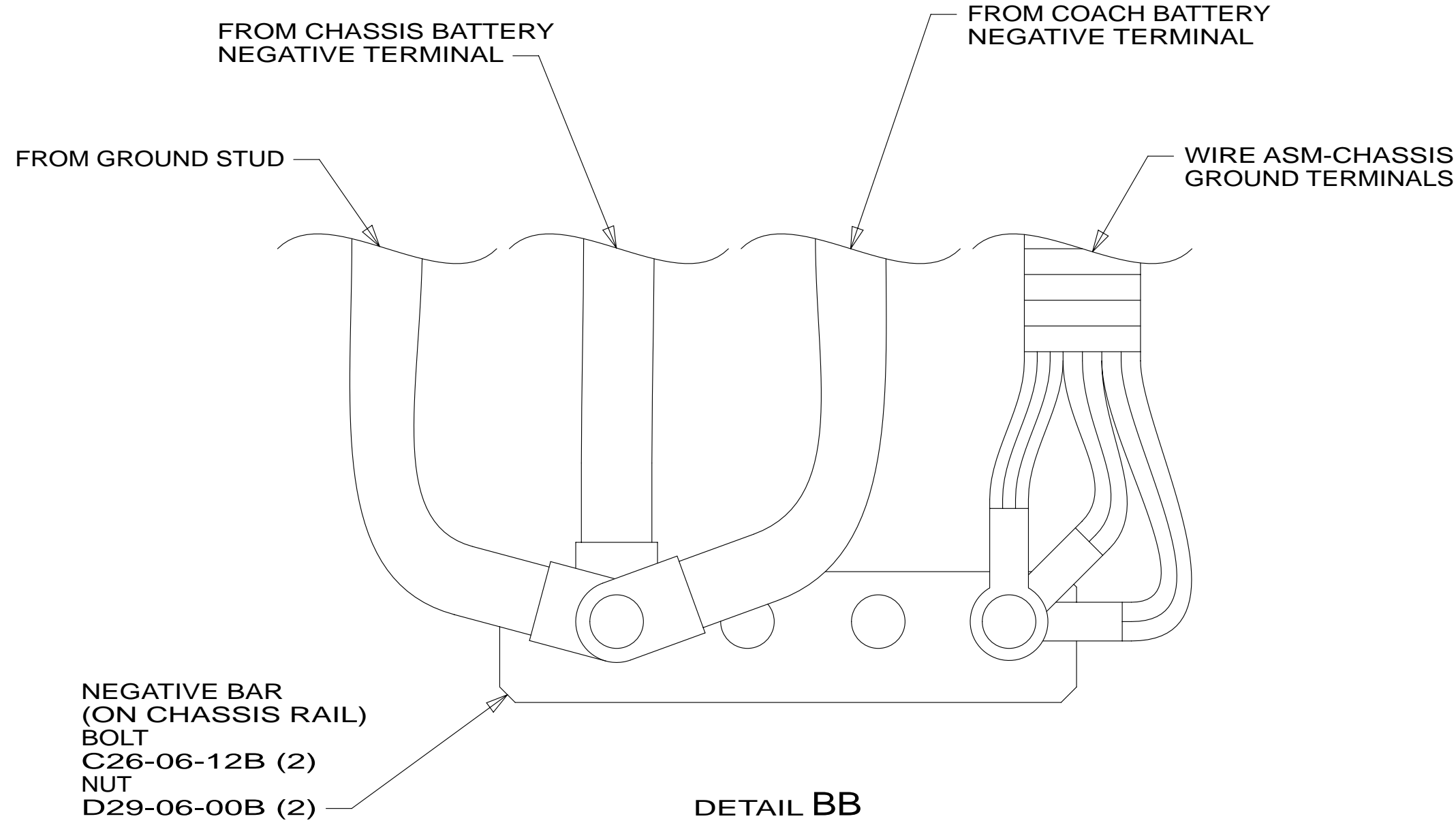
REF: 1

18-Mar-2013

FOR ELECTRICAL TORQUE SPECIFICATIONS SEE DWG NO. 128783-01-000

X-X

FOR ELECTRICAL CALLOUTS SEE DWG NO. 121339-01-000



VIEW BA

4 COVER WITH CONDUIT 41953-10-000 AND 41953-11-000 AS REQUIRED.

3. CONNECT CABLES TO COACH SIDE OF BATTERY DISCONNECT WHEN BATTERY DISCONNECT IS USED.

2. ALL GROUND WIRE TO BE COVERED WITH TUBING 8041-02-000.

1. CUT OFF EXCESS END OF WIRE TIE.

NOTES:

FOR ELECTRICAL
TORQUE
SPECIFICATIONS
SEE DWG NO.
128783-01-000

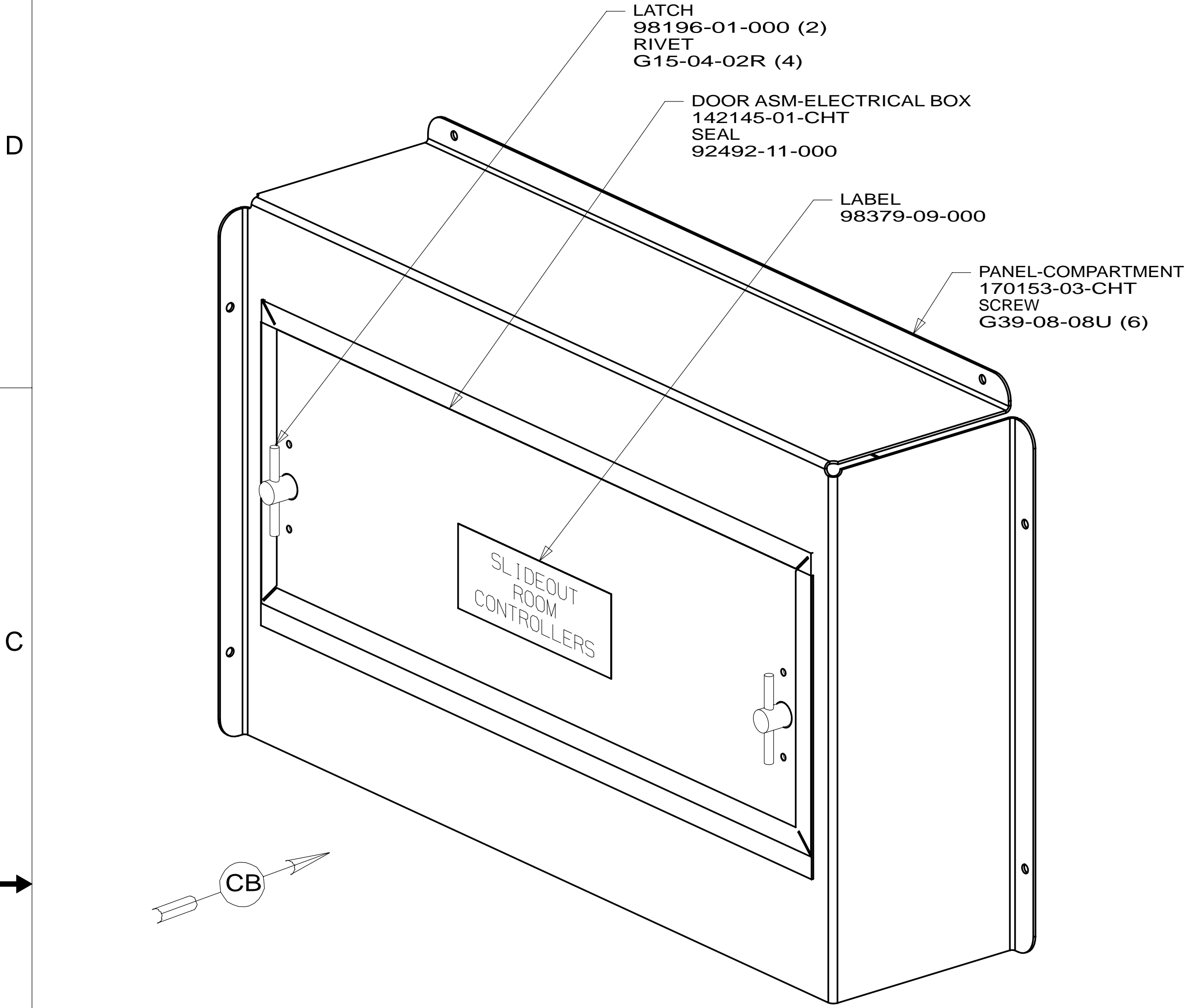
FOR ELECTRICAL
CALLOUTS
SEE DWG NO.
121339-01-000

265 CODES/STANDARDS-CSA/CMVSS

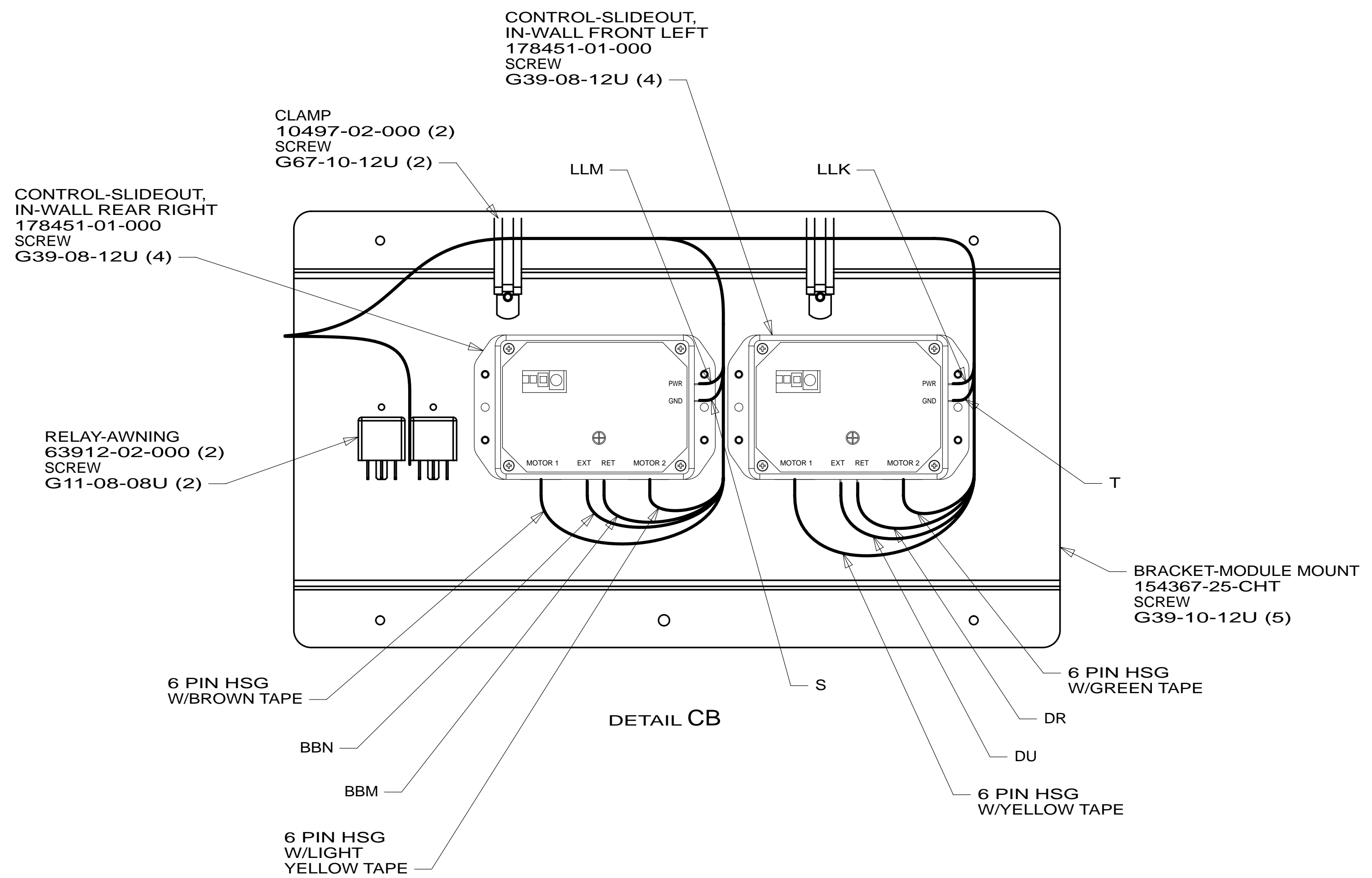
1B1 CODES/STANDARDS USA

1B1 265

FIRST USED		
14 D30A		
DO NOT SCALE DRAWING		
TITLE: WIRING INSTL-CHASSIS		
SHEET 2	PART NO 186397	REV



VIEW CA



NOTES:
1 SEE CHASSIS ELECTRICAL BOX ASM FOR ADDITIONAL INFORMATION.

FOR ELECTRICAL TORQUE SPECIFICATIONS SEE DWG NO. 128783-01-000

X-X

FOR ELECTRICAL CALLOUTS SEE DWG NO. 121339-01-000

265	CODES/STANDARDS-CSA/CMVSS
1B1	CODES/STANDARDS USA
1B1	265
FIRST USED	
14 D30A	
DO NOT SCALE DRAWING	
TITLE: WIRING INSTL-CHASSIS	
SHEET 3	PART NO 186397 REV
18-Mar-2013	