



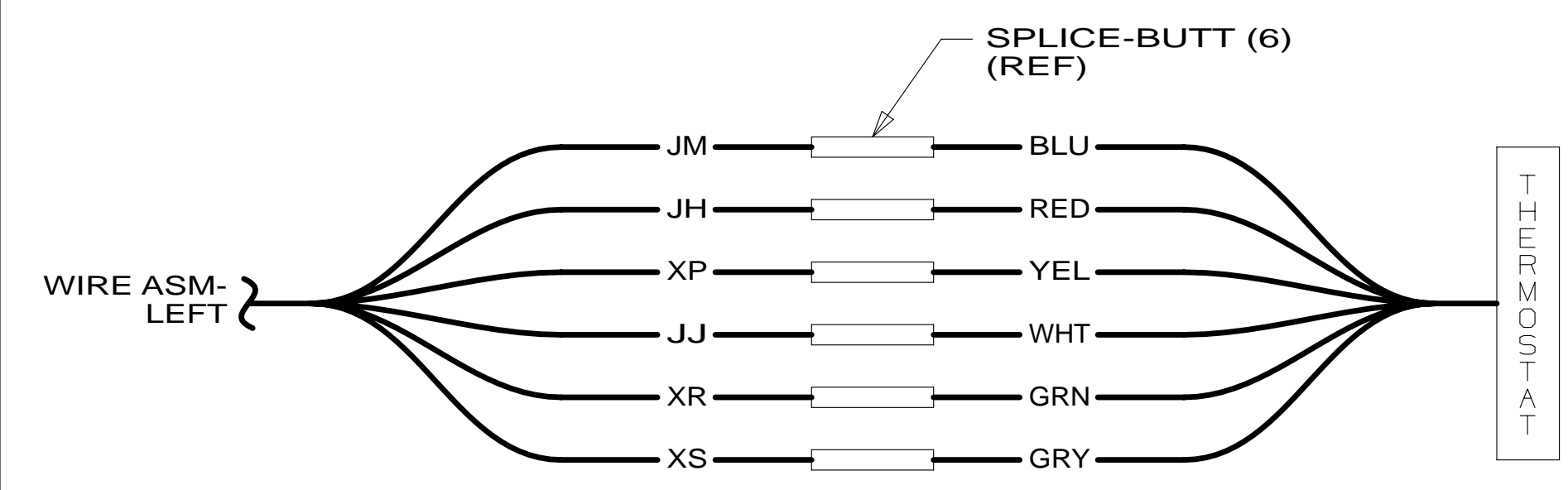
**DANGER**

**Danger of electrical shock, burns or death.** Always remove all power sources before attempting any repair, service or diagnostic work. Power can be present from shore power, generator, inverter or battery. All power sources must be disabled and secured before performing any service.

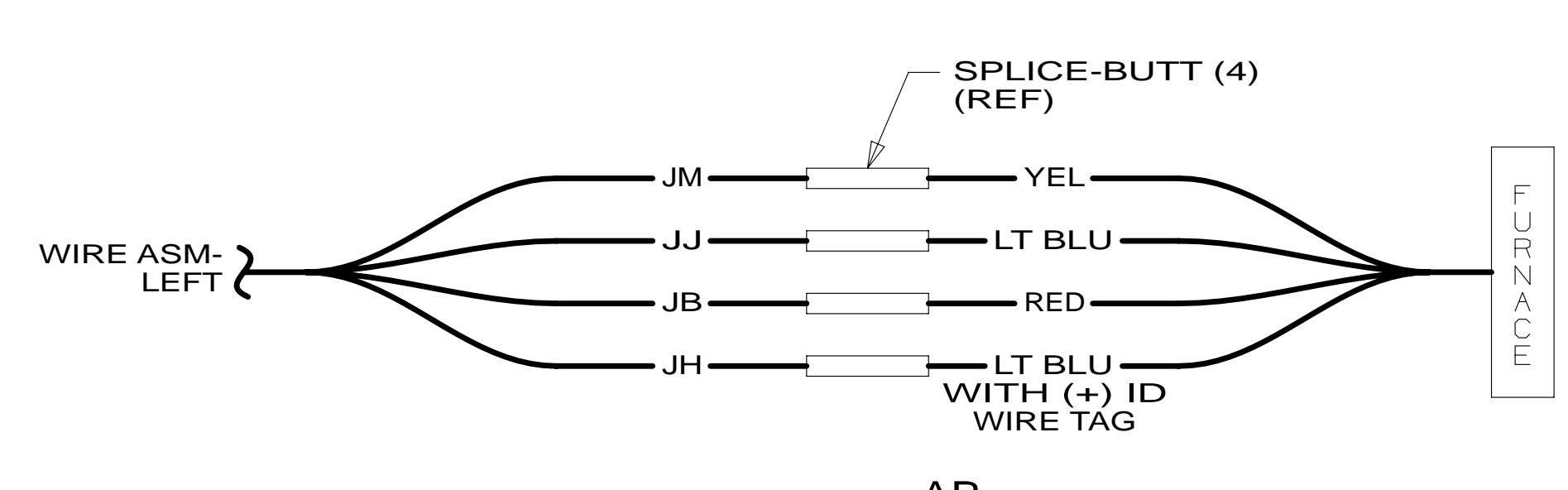


**CAUTION**

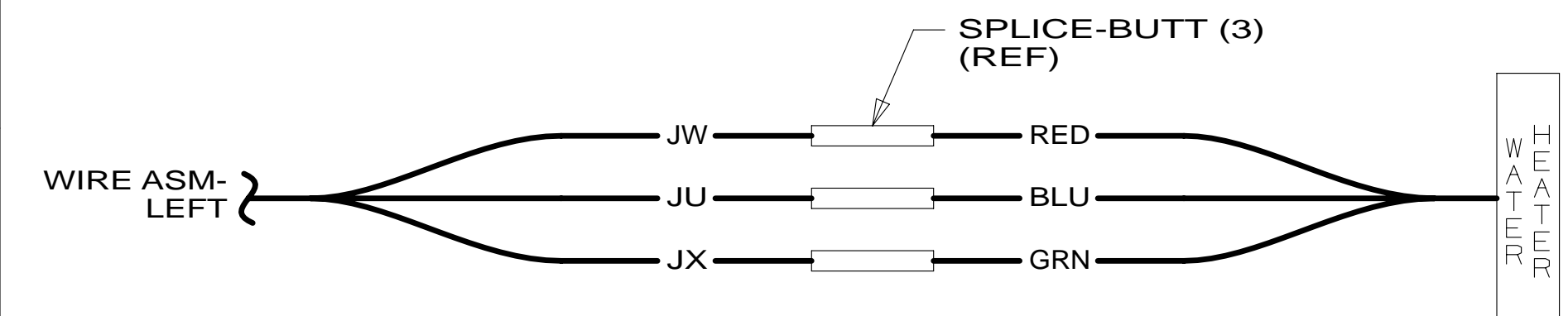
If you lack the skills, tools or equipment to perform diagnostic or repair work leave such work to an authorized Winnebago Industries dealer or other qualified shop.



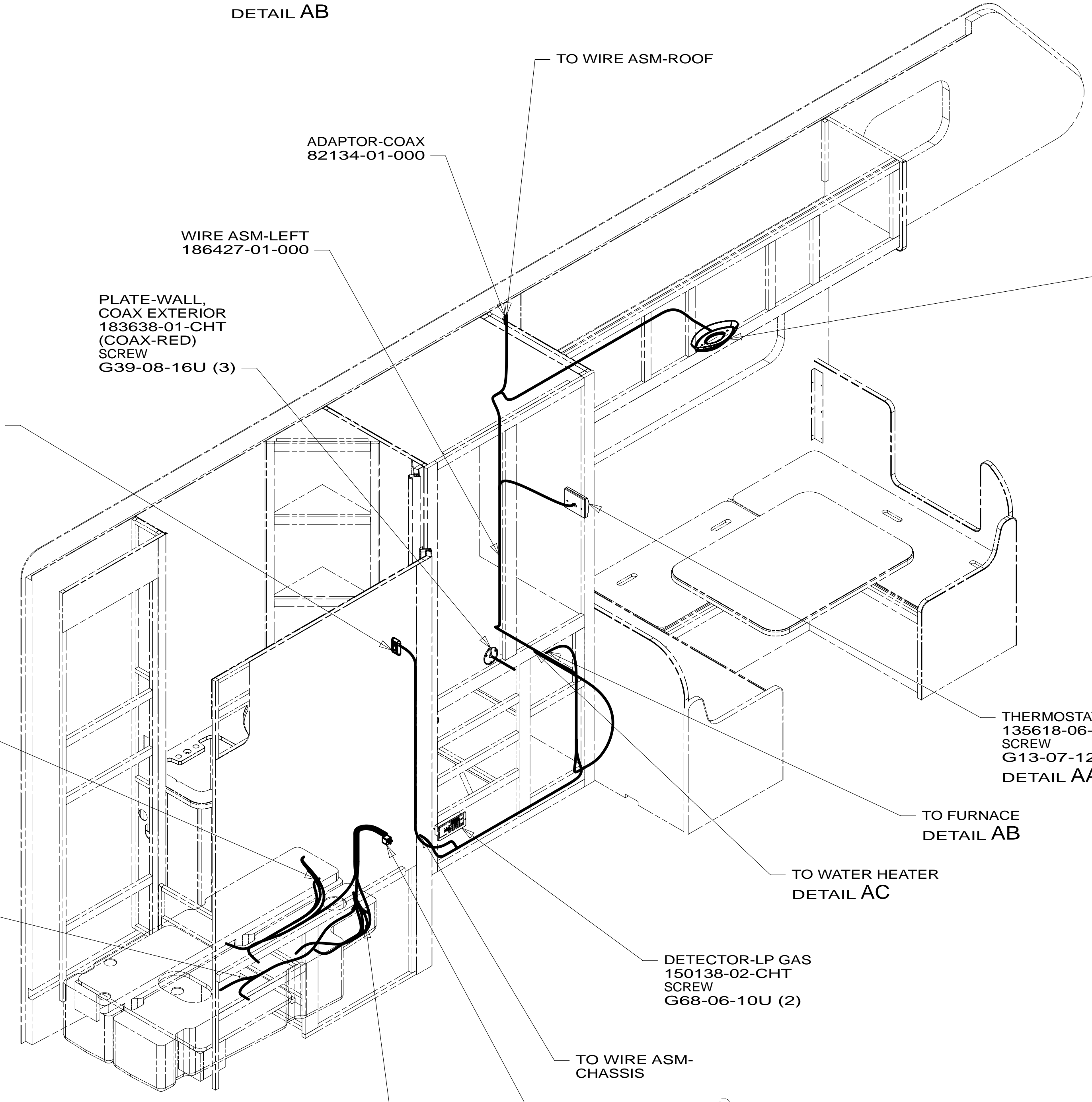
DETAIL AA



DETAIL AB



DETAIL AC



WIRE ASM-TANK AUX HOLDING 183744-03-000 (CONNECTS TO WIRE ASM-LEFT)  
 DETAIL EA  
 WIRE ASM-TANK AUX HOLDING 151317-04-000

WIRE ASM-HEATER, TANKS 183828-02-000 (CONNECTS TO WIRE ASM-LEFT)

9. AT MINIMUM ALL WIRES TO BE SUPPORTED AND SECURED PER CODE REQUIREMENTS. USE CLAMP 10495 OR 10497 OR WIRE TIE 8343 OR 108046 AND SCREW G67-XX-XXX OR G56-XX-XXX AS APPROPRIATE FOR INSTALLATION.

8 CUT 2-PIN HSG OFF ASSEMBLY, REPLACE WITH BUTT SPLICE 031876-01-000 (2). CONNECT BLK WIRE TO WHT AND BLK/WHT WIRE TO YEL.

7 MARK WIRES WITH WRAP OF BLU TAPE.

6 MARK WIRES WITH WRAP OF ORG TAPE.

5 REMOVE BULB SUPPLIED WITH LAMP. SEND TO STOCK AS P/N 117805-02-000. REPLACE WITH LED BULB.

4 NOT USED WITH 644

3 SEE DRAINAGE SYSTEM INSTALLATION FOR ADDITIONAL INFORMATION.

2 WIRE ROUTED ALONG DRAINAGE PIPE AND CONNECTED TO PIPE WITH TIE-WIRE 8343-04-000.

1 SEE DETAIL EB FOR WIRING AND CONNECTION TO SENSOR PROBES.

NOTES:

FOR ELECTRICAL TORQUE SPECIFICATIONS SEE DWG NO. 128783-01-000

FOR ELECTRICAL CALLOUTS SEE DWG NO. 121339-01-000

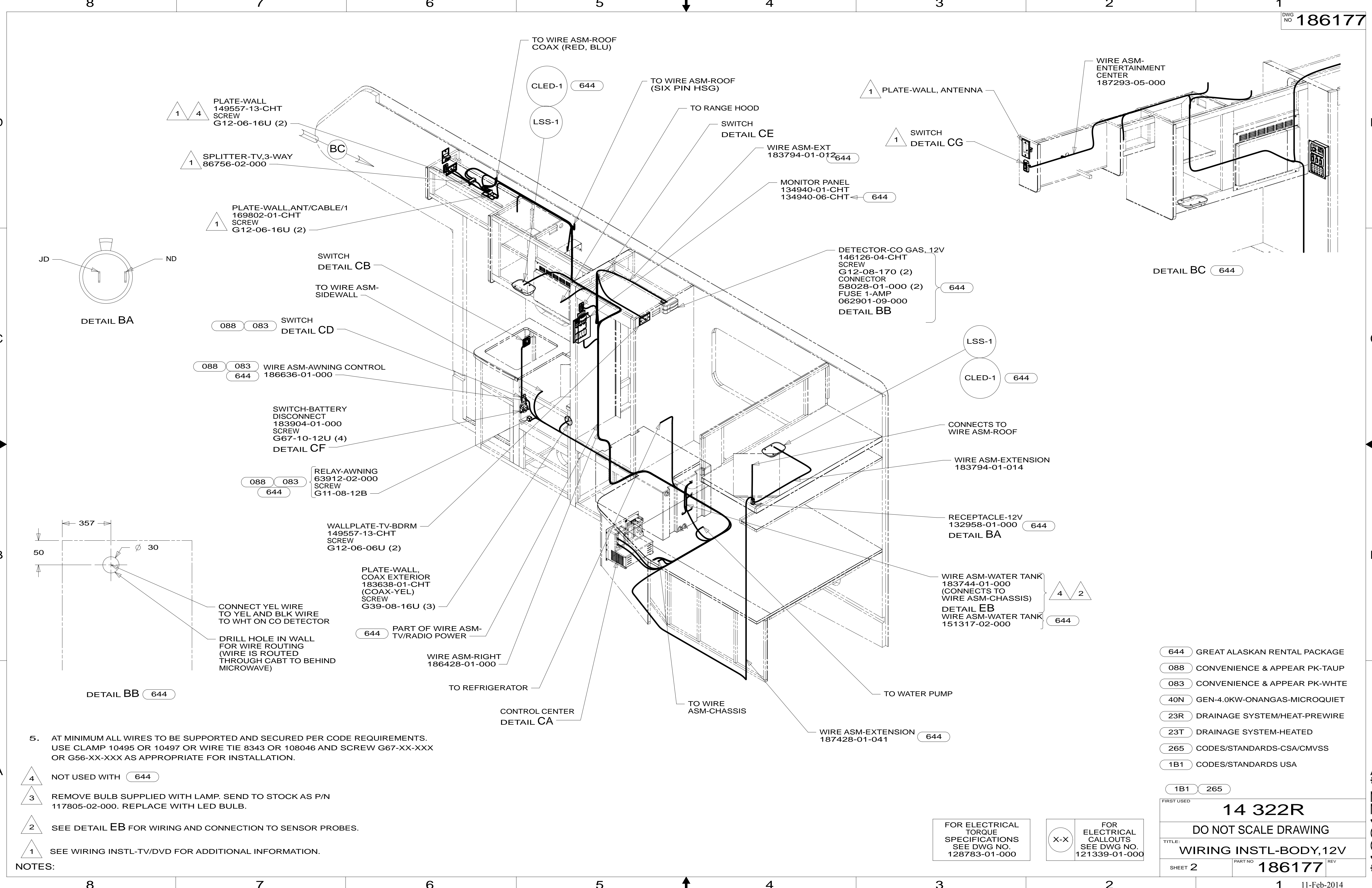
- 644 GREAT ALASKAN RENTAL PACKAGE
- 23R DRAINAGE SYSTEM/HEAT-PREWIRE
- 23T DRAINAGE SYSTEM-HEATED
- 265 CODES/STANDARDS-CSA/CMVSS
- 1B1 CODES/STANDARDS USA

COPYRIGHT 2014 WINNEBAGO INDUSTRIES, INC.

UNSPECIFIED TOLERANCES ARE:	MATERIAL:
WHOLE DIM (X) : 3	
ONE-PLACE (X.X) : 1.5	
TWO-PLACE (X.XX) : 0.50	
ANGLE : 1°	
THIRD ANGLE PROJECTION	
DO NOT SCALE DRAWING	REFER TO ES0018 FOR FASTENER TIGHTENING GUIDELINES

TITLE: WIRING INSTL-BODY, 12V	
SHEET 1 OF 5	PART NO 186177 REV

\* 186177 \*



5. AT MINIMUM ALL WIRES TO BE SUPPORTED AND SECURED PER CODE REQUIREMENTS. USE CLAMP 10495 OR 10497 OR WIRE TIE 8343 OR 108046 AND SCREW G67-XX-XXX OR G56-XX-XXX AS APPROPRIATE FOR INSTALLATION.

- 4 NOT USED WITH 644
- 3 REMOVE BULB SUPPLIED WITH LAMP. SEND TO STOCK AS P/N 117805-02-000. REPLACE WITH LED BULB.
- 2 SEE DETAIL EB FOR WIRING AND CONNECTION TO SENSOR PROBES.
- 1 SEE WIRING INSTL-TV/DVD FOR ADDITIONAL INFORMATION.

NOTES:

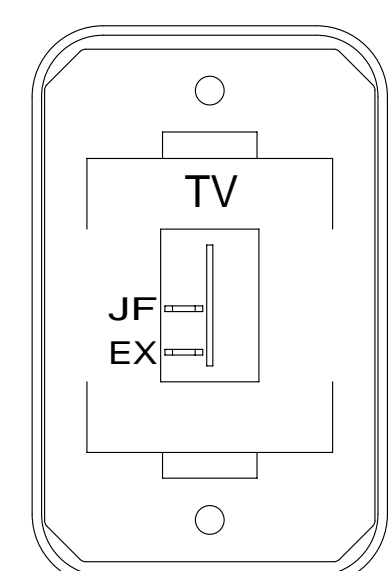
- 644 GREAT ALASKAN RENTAL PACKAGE
- 088 CONVENIENCE & APPEAR PK-TAUP
- 083 CONVENIENCE & APPEAR PK-WHITE
- 40N GEN-4.0KW-ONANGAS-MICROQUIET
- 23R DRAINAGE SYSTEM/HEAT-PREWIRE
- 23T DRAINAGE SYSTEM-HEATED
- 265 CODES/STANDARDS-CSA/CMVSS
- 1B1 CODES/STANDARDS USA

1B1	265
FIRST USED	
<b>14 322R</b>	
DO NOT SCALE DRAWING	
TITLE: <b>WIRING INSTL-BODY,12V</b>	
SHEET 2	PART NO <b>186177</b> REV
11-Feb-2014	

FOR ELECTRICAL TORQUE SPECIFICATIONS SEE DWG NO. 128783-01-000

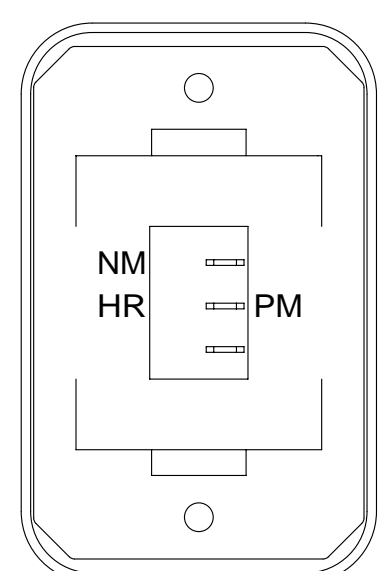
FOR ELECTRICAL CALLOUTS SEE DWG NO. 121339-01-000

\* 186177 A



SWITCH-ROCKER  
135740-01-CHT  
SWITCH-BASE  
135741-01-CHT  
SWITCH-BEZEL  
135742-45-CHT  
SCREW  
G11-08-08U (2)

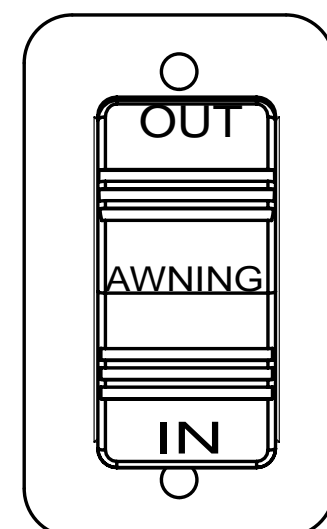
DETAIL CG 644



SWITCH-BLANK  
138253-01-CHT  
SWITCH-ROCKER  
135740-06-CHT  
SWITCH-BASE  
135741-01-CHT  
SWITCH-BEZEL  
135742-01-CHT  
LABEL-SWITCH  
134563-01-CHT  
SCREW  
G11-08-08U (2)

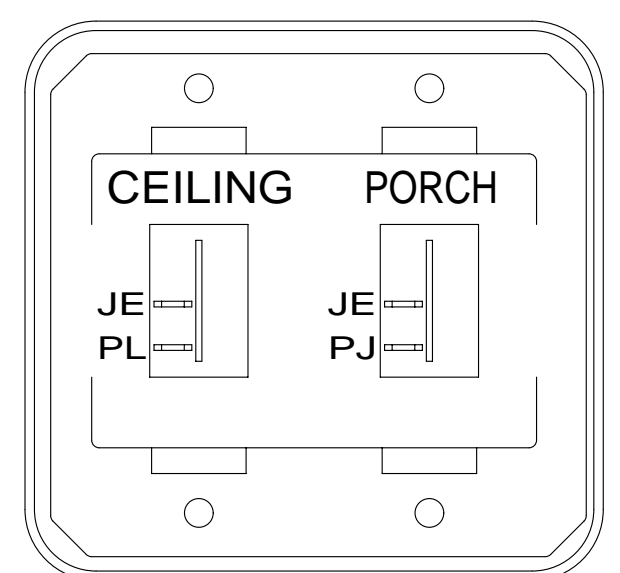
HOLDING TANK HEATER  
TURN OFF When Not In Use  
SEE OPERATORS MANUAL

DETAIL CE



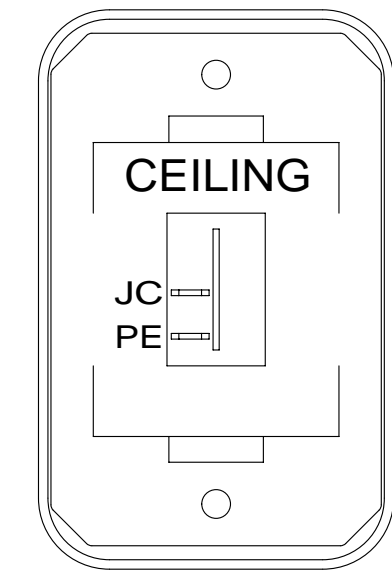
SWITCH-ROCKER  
108357-06-000  
ACTUATOR  
108356-12-000  
SWITCH-BLANK  
096241-03-000  
PLATE-SWITCH  
098351-07-CHT  
SCREW  
G11-06-10U

DETAIL CD



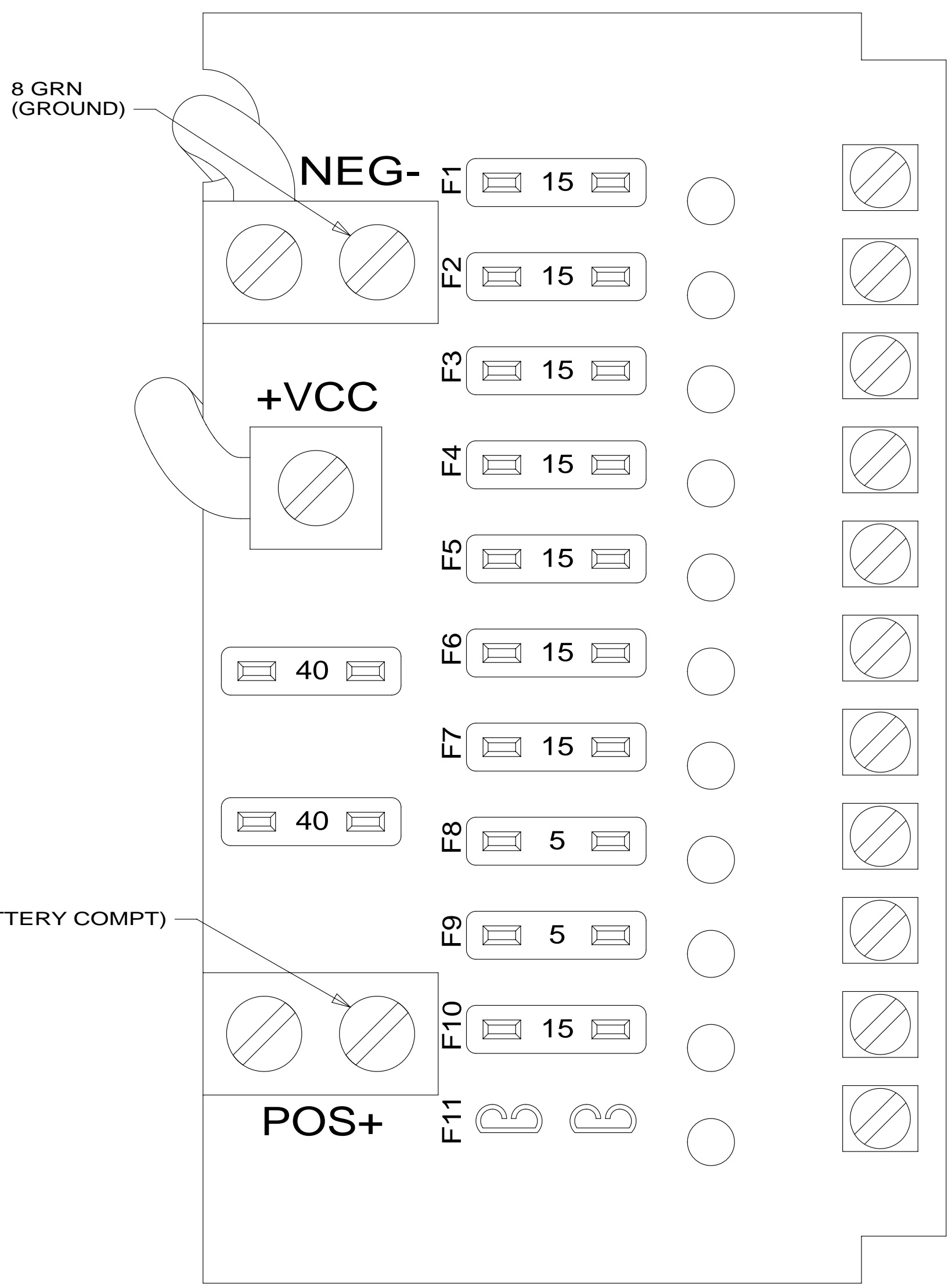
SWITCH-ROCKER  
135740-01-CHT (2)  
SWITCH-BASE  
135741-02-CHT  
SWITCH-BEZEL  
135742-19-CHT  
SCREW  
G11-08-08U (4)

DETAIL CB



SWITCH-ROCKER  
135740-01-CHT  
SWITCH-BASE  
135741-01-CHT  
SWITCH-BEZEL  
135742-07-CHT  
SCREW  
G11-08-08U (2)

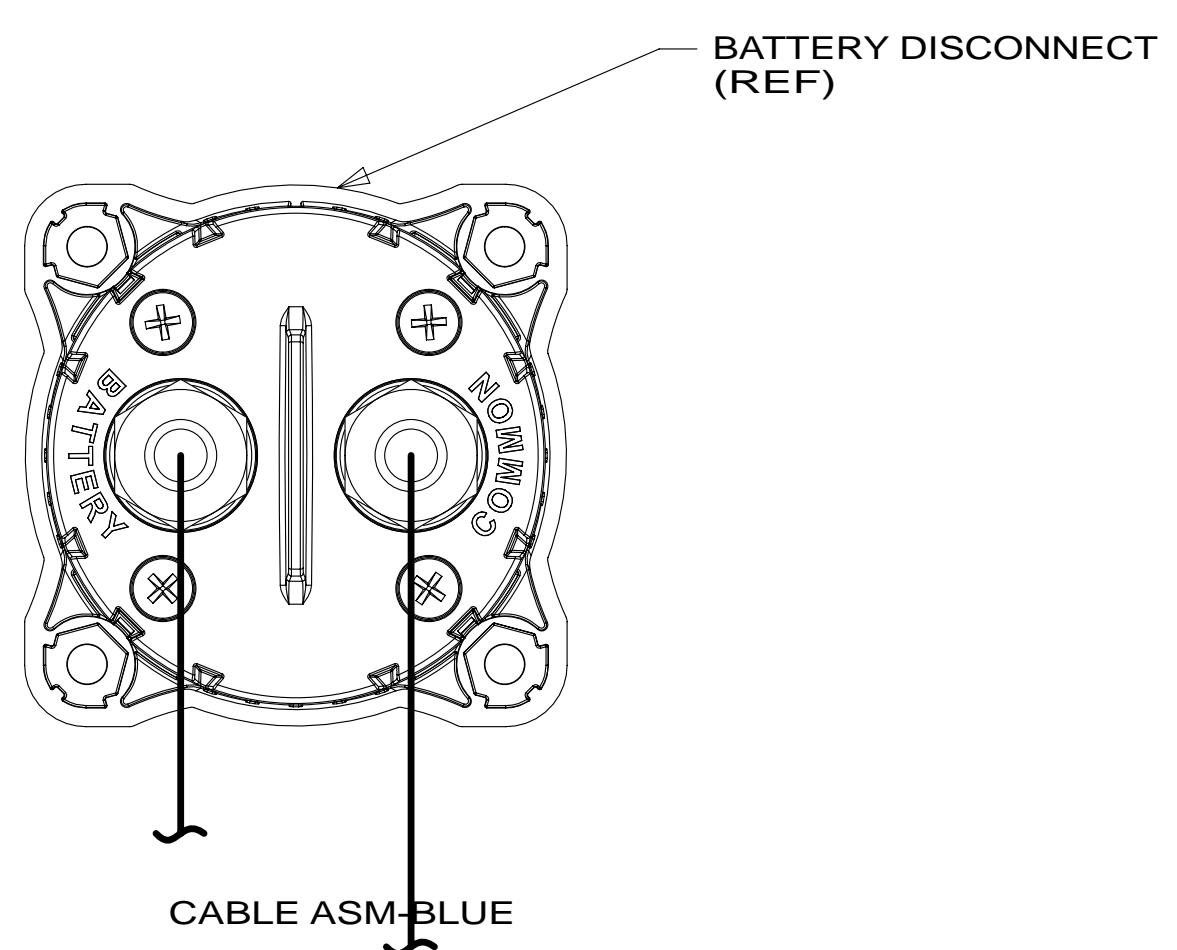
DETAIL CC



8 GRN  
(GROUND)

J  
BLK  
(BATTERY COMPT)

- JC  
14 YEL  
(LAMPS)
- JD  
14 YEL  
(LAMPS)
- JE  
14 YEL  
(LAMPS)
- NM  
12 YEL 23T  
(HEATED TANKS)
- JA  
12 YEL  
(MONITOR PANEL & PUMP)  
(ISOLATED CIRCUIT)
- JB  
14 YEL  
(FURNACE)
- FFD  
12 YEL  
(AWNING)
- WB  
16 YEL  
(LP LEAK DETECTOR)
- ET  
16 YEL  
(REFRIG)
- JF  
14 YEL  
(TV/RADIO POWER) 644



BATTERY DISCONNECT  
(REF)

CABLE ASM-BLUE

CABLE ASM-PURPLE

DETAIL CF

- 52F AWNING-PATIO
- 644 GREAT ALASKAN RENTAL PACKAGE
- 088 CONVENIENCE & APPEAR PK-TAUP
- 083 CONVENIENCE & APPEAR PK-WHITE
- 23R DRAINAGE SYSTEM/HEAT-PREWIRE
- 23T DRAINAGE SYSTEM-HEATED
- 265 CODES/STANDARDS-CSA/CMVSS
- 1B1 CODES/STANDARDS USA

FIRST USED	
<b>14 322R</b>	
<b>DO NOT SCALE DRAWING</b>	
<b>TITLE: WIRING INSTL-BODY,12V</b>	
SHEET 3	PART NO <b>186177</b> REV

2 WITHOUT 23T  
OR 23R

1 FOR REFERENCE ONLY. SEE LOAD CENTER/ATS ASM  
FOR ADDITIONAL INFORMATION.

NOTES:

FOR ELECTRICAL  
TORQUE  
SPECIFICATIONS  
SEE DWG NO.  
128783-01-000

FOR  
ELECTRICAL  
CALLOUTS  
SEE DWG NO.  
121339-01-000

DETAIL CA 1

\* 186177 \*

8

7

6

5

4

3

2

1

D

D

C

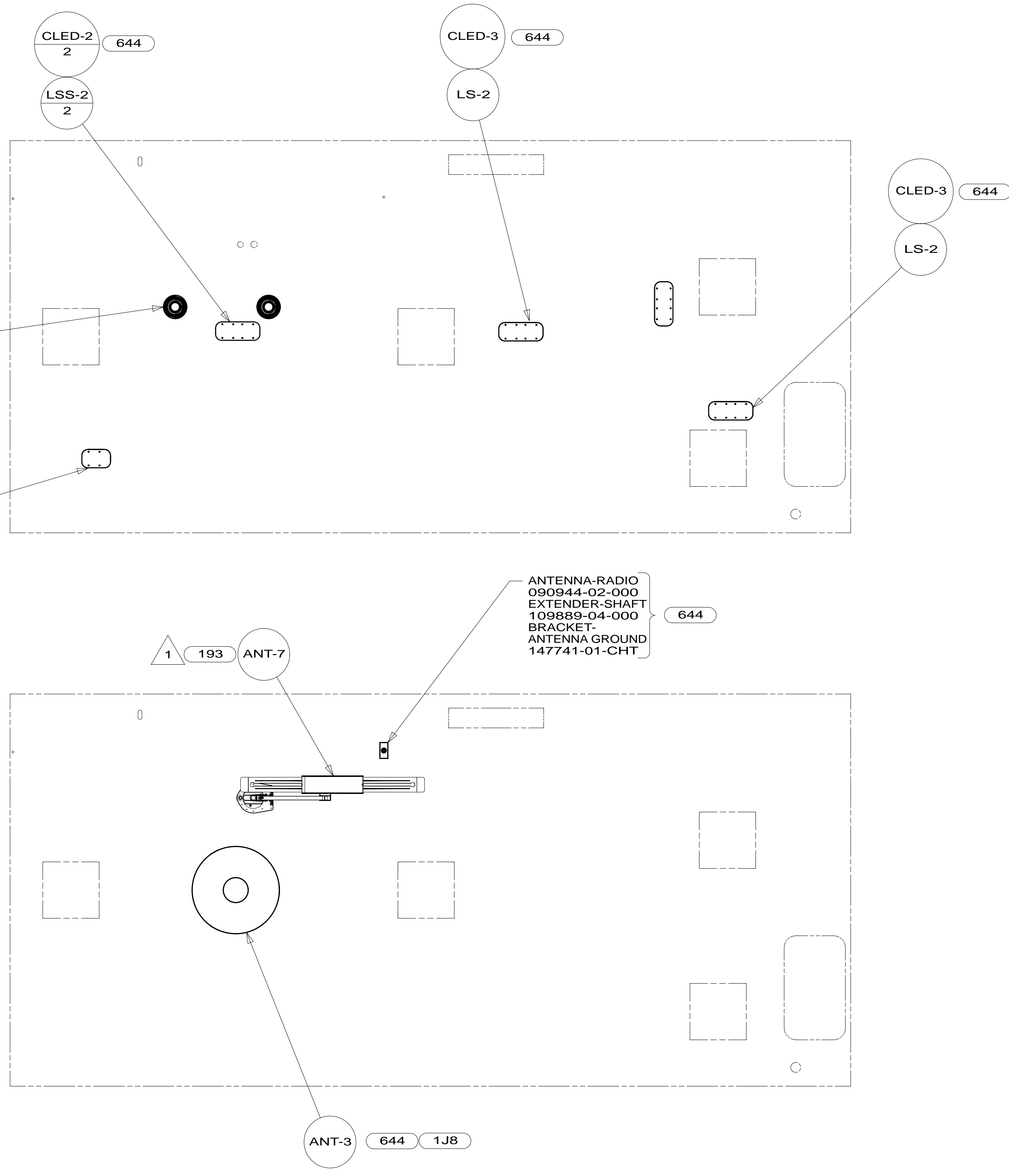
C

B

B

A

A



644 SPEAKER-ROUND, CEILING  
171547-01-CHT (2)  
SCREW  
G11-08-12U (8)

644 ANTENNA-RADIO  
090944-02-000  
EXTENDER-SHAFT  
109889-04-000  
BRACKET-  
ANTENNA GROUND  
147741-01-CHT

2 REMOVE BULB SUPPLIED WITH LAMP. SEND TO STOCK AS P/N 117805-02-000. REPLACE WITH LED BULB.

1 SEE ANTENNA INSTALLATION MANUAL FOR CORRECT INSTALLATION PROCEDURE.

NOTES:

FOR ELECTRICAL TORQUE SPECIFICATIONS SEE DWG NO. 128783-01-000

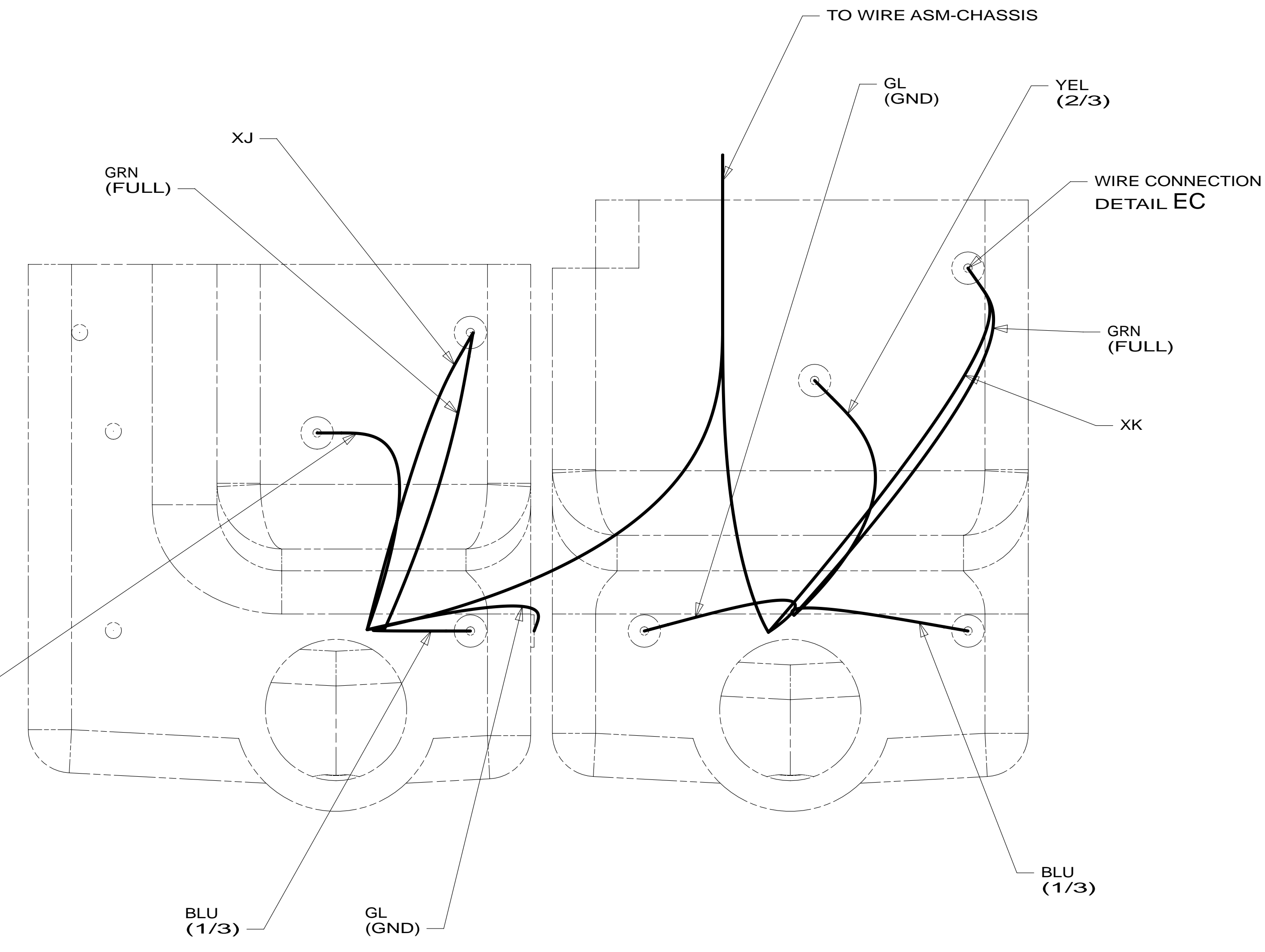
FOR ELECTRICAL CALLOUTS SEE DWG NO. 121339-01-000

- 644 GREAT ALASKAN RENTAL PACKAGE
- 1J8 TV ANTENNA-OMNI DIRECTIONAL
- 193 TV ANTENNA-AMPLIFIED SYSTEM
- 265 CODES/STANDARDS-CSA/CMVSS
- 1B1 CODES/STANDARDS USA

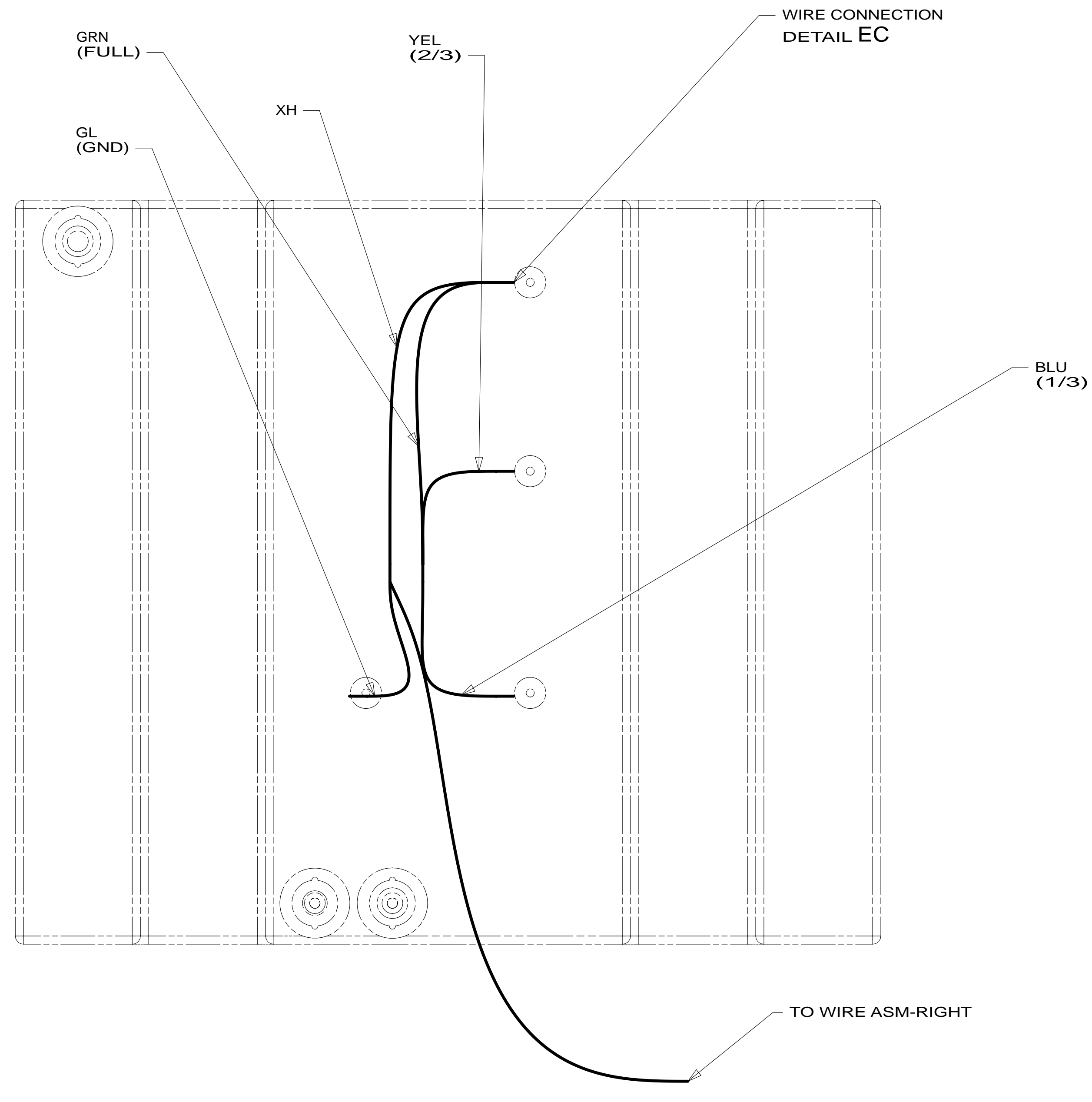
FIRST USED	14 322R	
DO NOT SCALE DRAWING		
TITLE:	WIRING INSTL-BODY, 12V	
SHEET 4	PART NO 186177	REV

\* 186177 \*

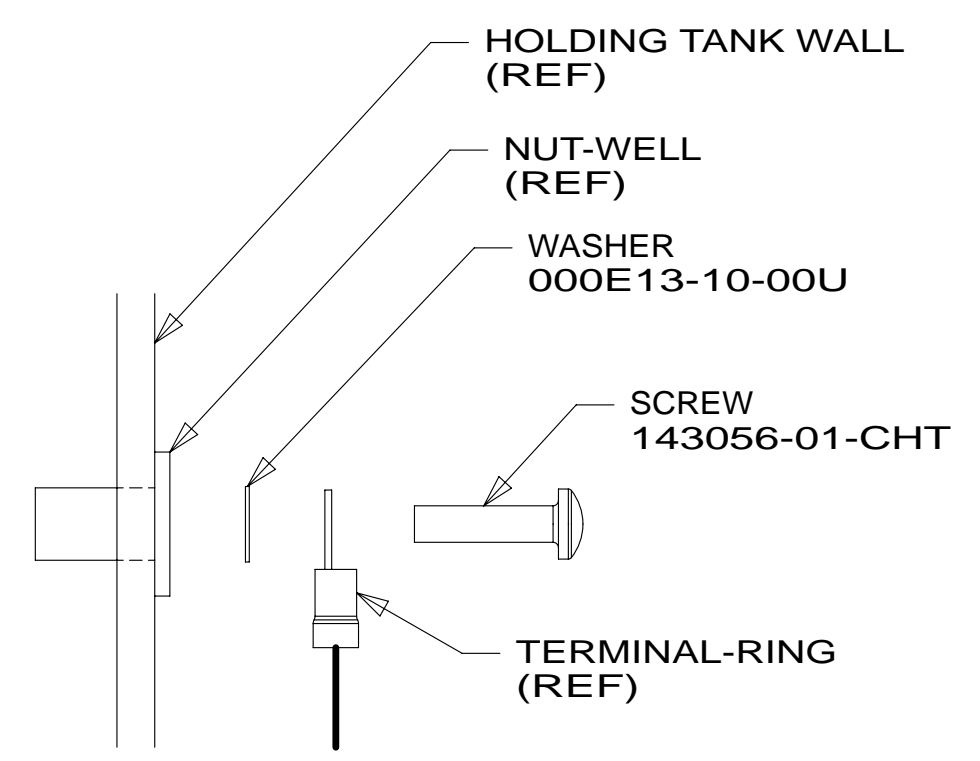




DETAIL EA



DETAIL EB



DETAIL EC 1

1 TYPICAL WIRE ATTACHMENT AT ALL LEVEL PROBES (4 EACH) FOR WATER, MAIN, AND AUX HOLDING TANKS.

NOTES:

FIRST USED	<b>14 322R</b>	
TITLE:	DO NOT SCALE DRAWING	
	<b>WIRING INSTL-BODY, 12V</b>	
SHEET 5	PART NO <b>186177</b>	REV
	1	11-Feb-2014

\* 186177 \* A