



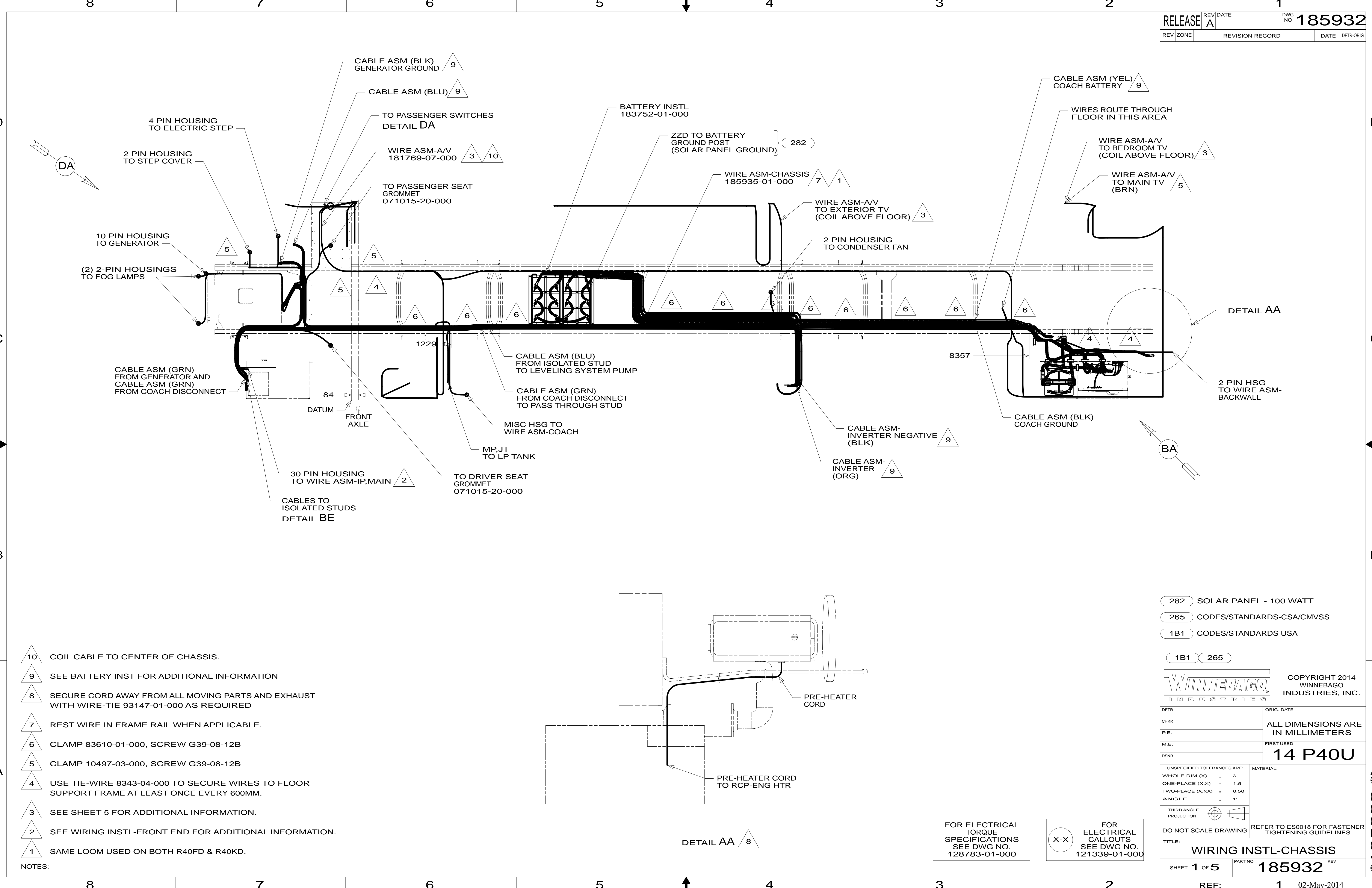
DANGER

Danger of electrical shock, burns or death. Always remove all power sources before attempting any repair, service or diagnostic work. Power can be present from shore power, generator, inverter or battery. All power sources must be disabled and secured before performing any service.



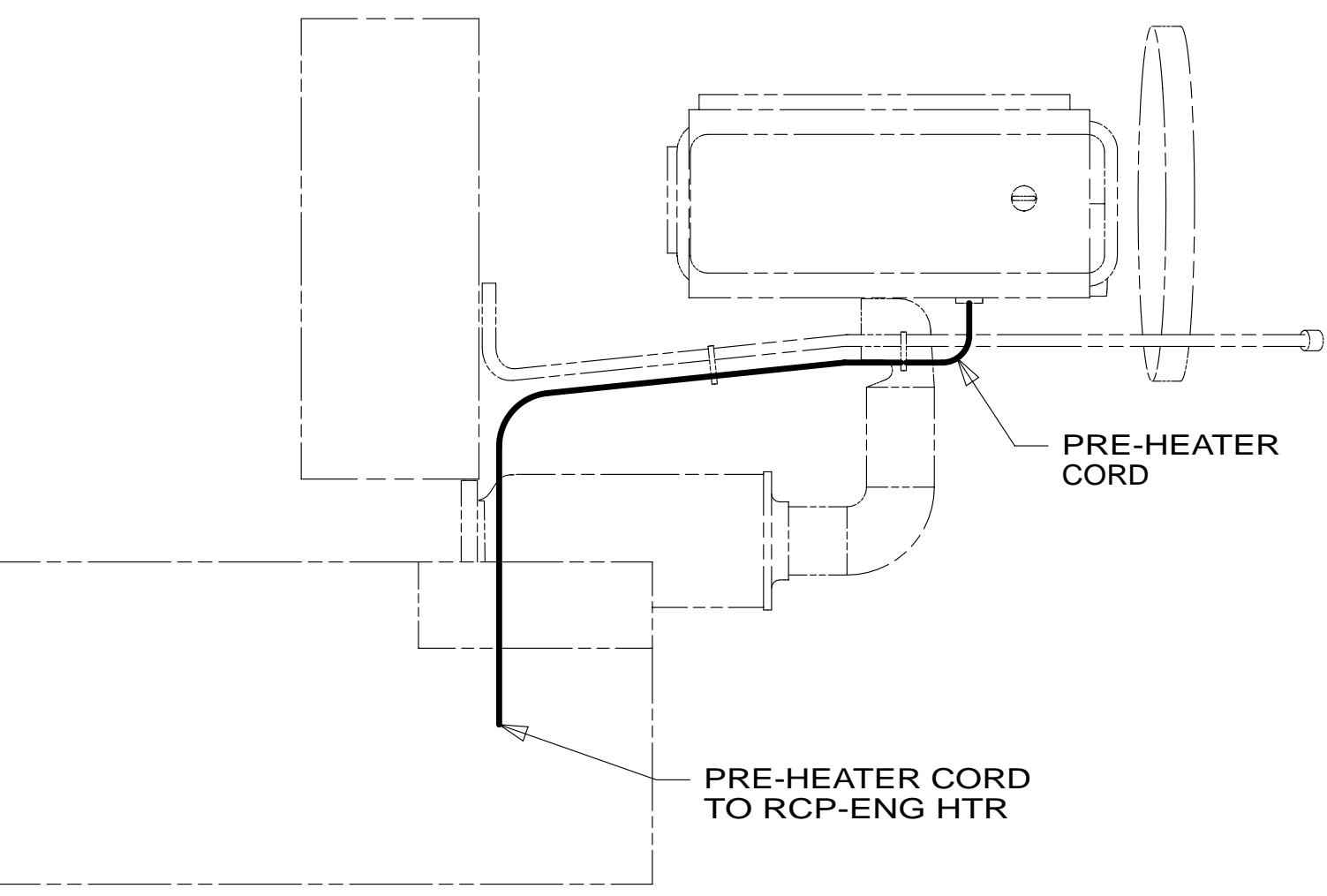
CAUTION

If you lack the skills, tools or equipment to perform diagnostic or repair work leave such work to an authorized Winnebago Industries dealer or other qualified shop.



- NOTES:
- 10 COIL CABLE TO CENTER OF CHASSIS.
 - 9 SEE BATTERY INST FOR ADDITIONAL INFORMATION
 - 8 SECURE CORD AWAY FROM ALL MOVING PARTS AND EXHAUST WITH WIRE-TIE 93147-01-000 AS REQUIRED
 - 7 REST WIRE IN FRAME RAIL WHEN APPLICABLE.
 - 6 CLAMP 83610-01-000, SCREW G39-08-12B
 - 5 CLAMP 10497-03-000, SCREW G39-08-12B
 - 4 USE TIE-WIRE 8343-04-000 TO SECURE WIRES TO FLOOR SUPPORT FRAME AT LEAST ONCE EVERY 600MM.
 - 3 SEE SHEET 5 FOR ADDITIONAL INFORMATION.
 - 2 SEE WIRING INSTL-FRONT END FOR ADDITIONAL INFORMATION.
 - 1 SAME LOOM USED ON BOTH R40FD & R40KD.

- 282 SOLAR PANEL - 100 WATT
- 265 CODES/STANDARDS-CSA/CMVSS
- 1B1 CODES/STANDARDS USA
- 1B1 265



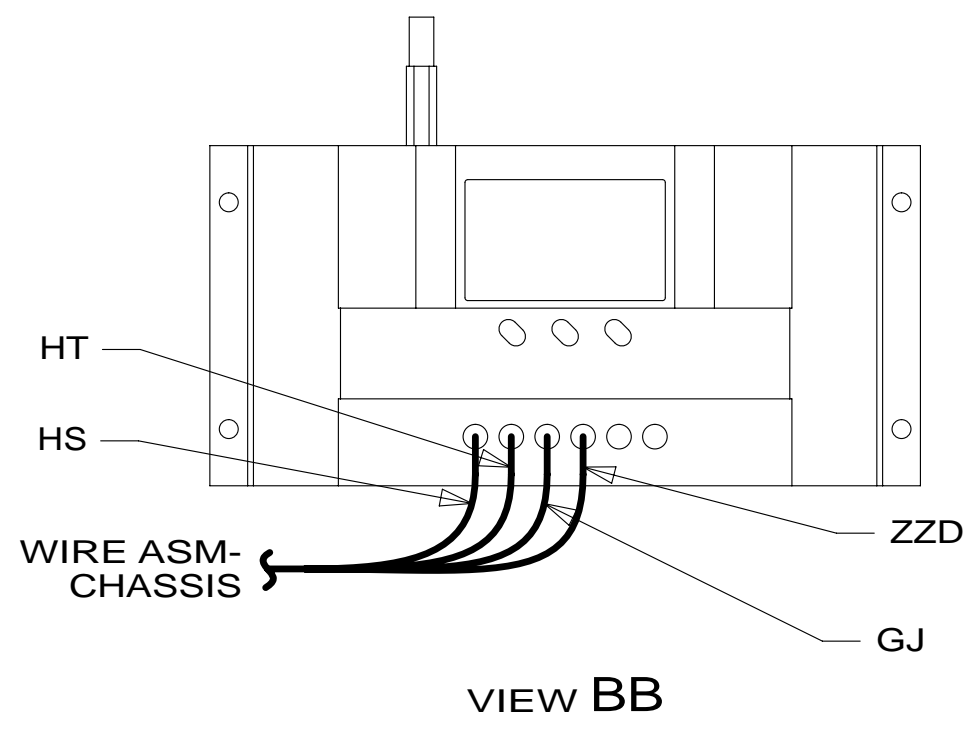
DETAIL AA 8

FOR ELECTRICAL TORQUE SPECIFICATIONS SEE DWG NO. 128783-01-000

FOR ELECTRICAL CALLOUTS SEE DWG NO. 121339-01-000

WINNEBAGO		COPYRIGHT 2014 WINNEBAGO INDUSTRIES, INC.	
DFT-ORIG	ORIG. DATE	14 P40U	
CHKR	ALL DIMENSIONS ARE IN MILLIMETERS		
P.E.	FIRST USED		
M.E.			
DSNR			
UNSPECIFIED TOLERANCES ARE:		MATERIAL:	
WHOLE DIM (X)	: 3		
ONE-PLACE (X.X)	: 1.5		
TWO-PLACE (X.XX)	: 0.50		
ANGLE	: 1°		
THIRD ANGLE PROJECTION			
DO NOT SCALE DRAWING	REFER TO ES0018 FOR FASTENER TIGHTENING GUIDELINES		
TITLE: WIRING INSTL-CHASSIS			
SHEET 1 OF 5	PART NO 185932	REV	
REF: 1		02-May-2014	

* 185932 *



CIRCUIT BREAKERS
DETAIL CA

FREIGHTLINER
STARTER CABLE

CHASSIS
BATTERIES
(REF)

CONTROL-CHARGE,SOLAR
181639-01-000
SCREW
G39-10-12U (4)
COVER
181751-01-CHT
SCREW
G39-10-12U (4)
GROMMET
114208-04-000
DETAIL BB

282 1

LABEL
98379-09-000

LABEL
98379-04-000

LABEL
98379-08-000

282
29W
PANEL-CLOSEOUT,
ELECTRICAL
178322-04-CHT
178322-03-CHT
RIVET-POP
113133-01-CHT (6)

PANEL-CLOSEOUT
161730-05-CHT
SCREW
G39-08-12U (4)

SLIDEOUT
ROOM
CONTROLLERS

BATTERY MODE
SOLENOID AND
RELAYS

WARRANTY
ELECTRICAL COMPONENTS
& WIRING PARTS
MUST BE LEFT FROM
THIS CAB

CB

VIEW BA

265 CODES/STANDARDS-CSA/CMVSS

1B1 CODES/STANDARDS USA

1B1 265

FIRST USED
14 P40U

DO NOT SCALE DRAWING

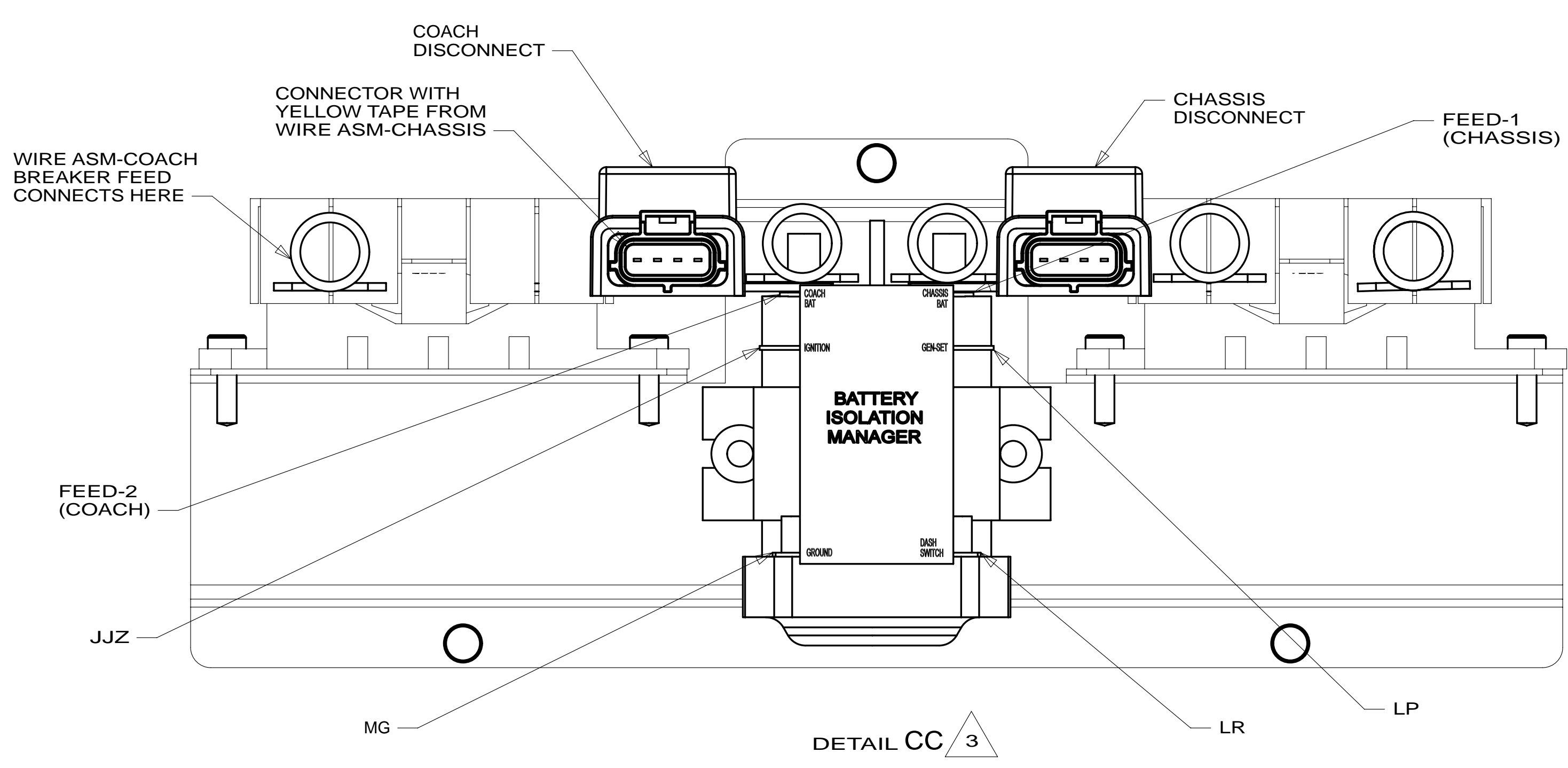
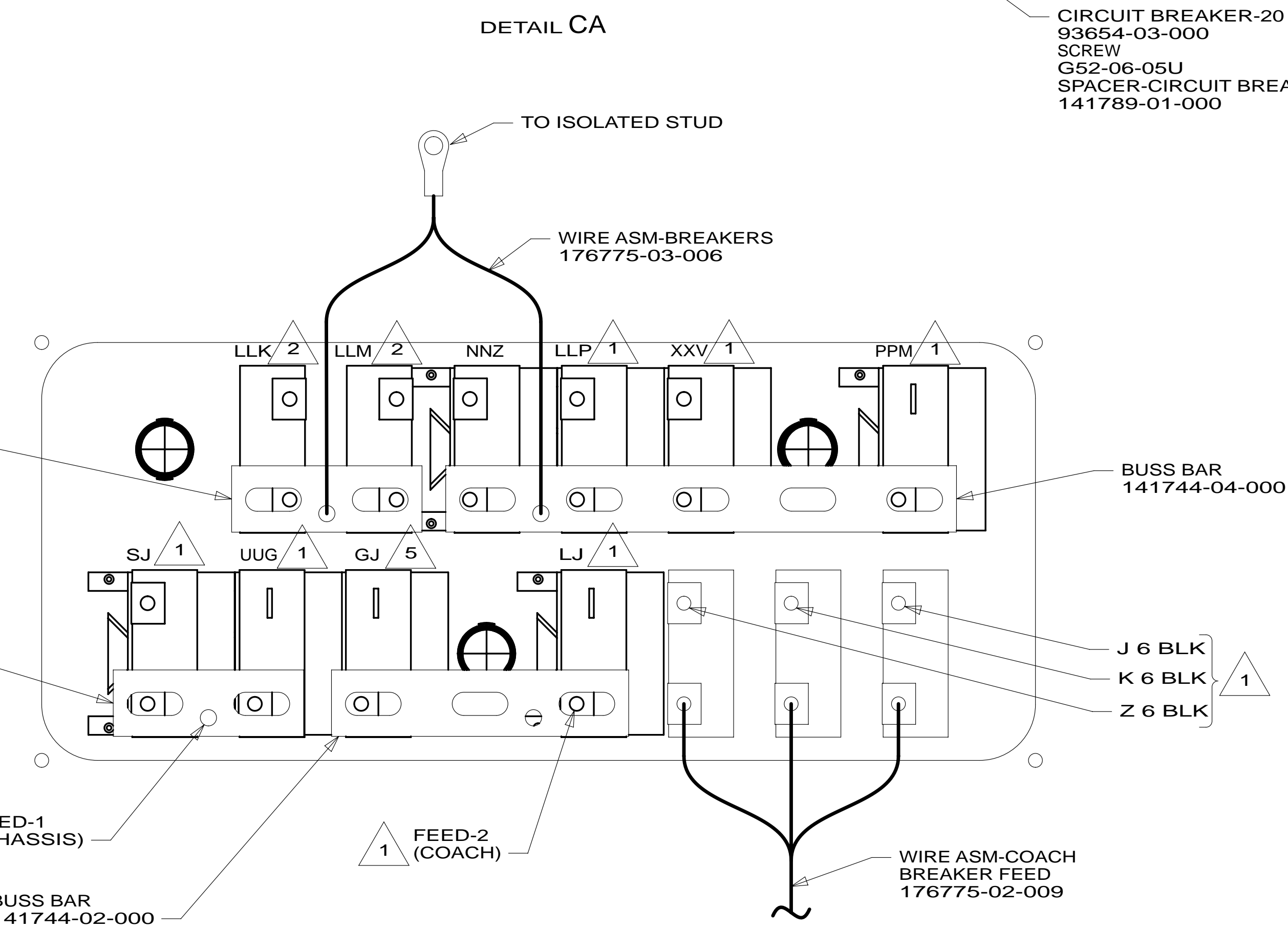
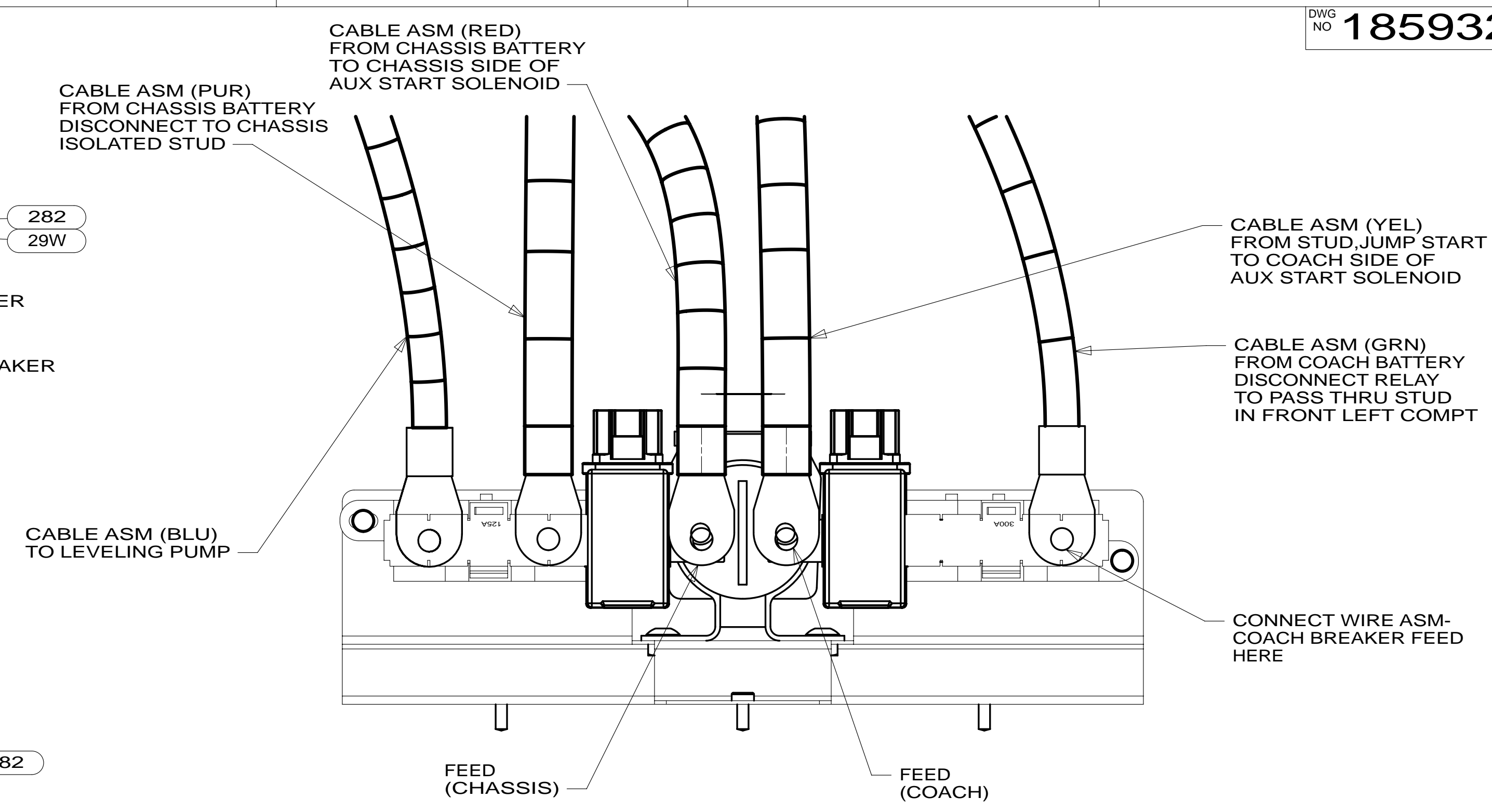
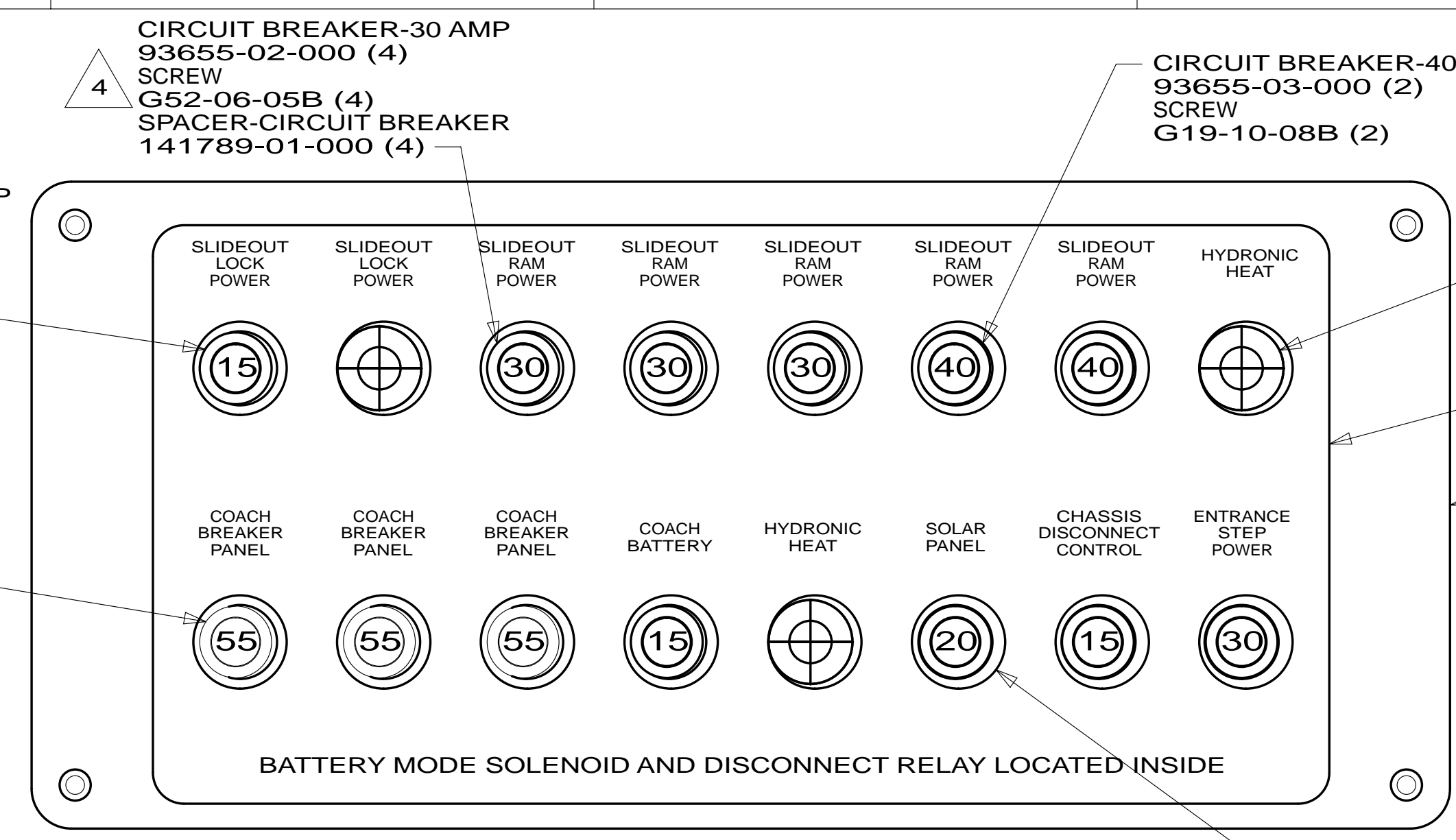
TITLE:
WIRING INSTL-CHASSIS

SHEET 2 PART NO **185932** REV

FOR ELECTRICAL
TORQUE
SPECIFICATIONS
SEE DWG NO.
128783-01-000

X-X
FOR
ELECTRICAL
CALLOUTS
SEE DWG NO.
121339-01-000

* 185932 *



- NOTES:
- 5 FROM WIRE ASM-CHASSIS. TIE BACK TO HARNESS WITH 29W
 - 4 REPLACE EXISTING SCREW TO PROPERLY ATTACH BREAKER TO BUSS BAR.
 - 3 SEE BATTERY INSTL FOR ADDITIONAL INFORMATION.
 - 2 FROM WIRE ASM-SLIDEOUT POWER.
 - 1 CIRCUITS BRANCH FROM WIRE ASM-CHASSIS.

- 29W SOLAR PANEL/BATTERY CHRGR W/O
- 282 SOLAR PANEL - 100 WATT
- 265 CODES/STANDARDS-CSA/CMVSS
- 1B1 CODES/STANDARDS USA

FOR ELECTRICAL TORQUE SPECIFICATIONS SEE DWG NO. 128783-01-000

X-X FOR ELECTRICAL CALLOUTS SEE DWG NO. 121339-01-000

FIRST USED

14 P40U

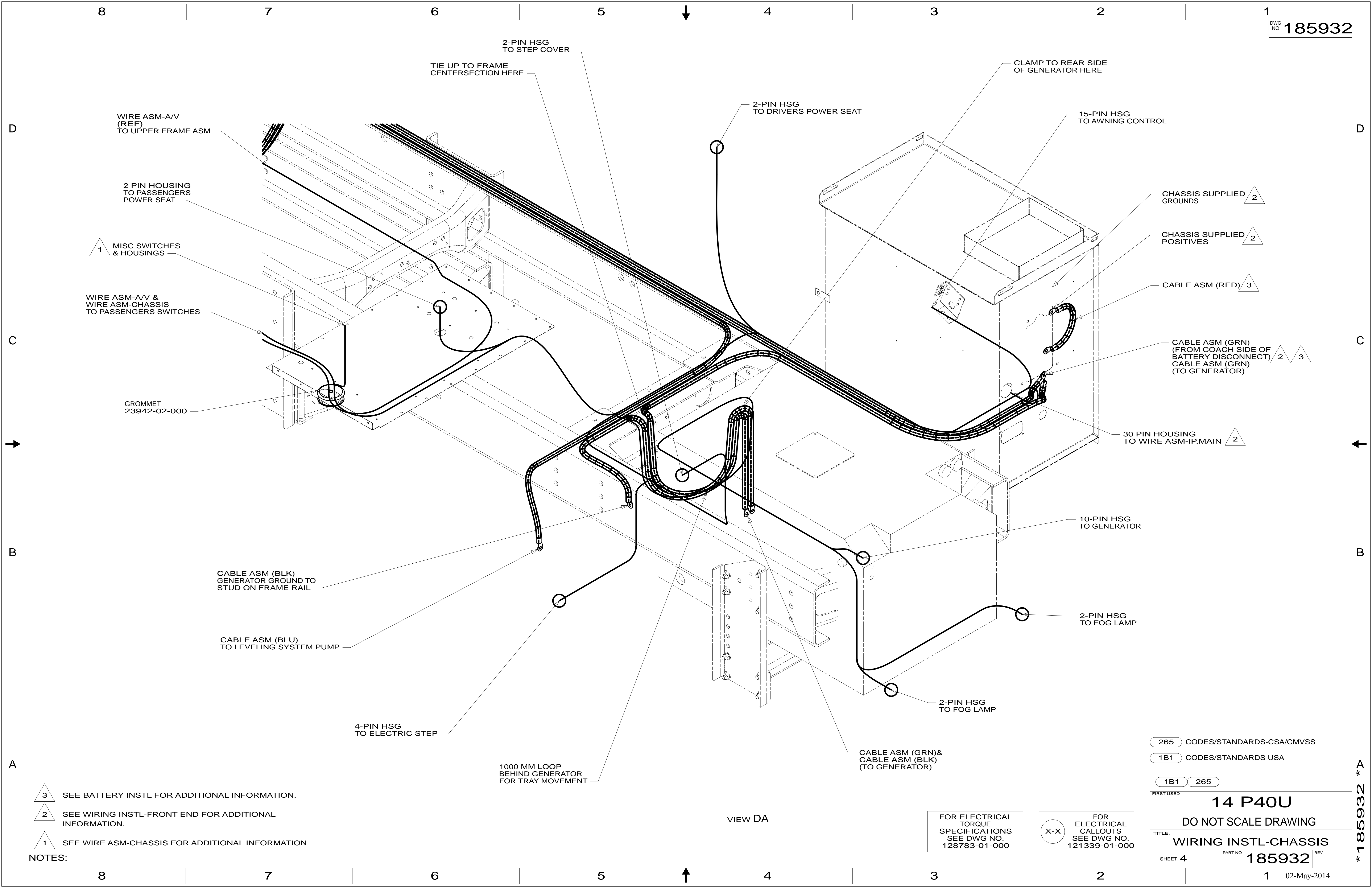
DO NOT SCALE DRAWING

TITLE: **WIRING INSTL-CHASSIS**

SHEET 3 PART NO. **185932** REV

02-May-2014

* 185932 A



WIRE ASM-A/V (REF) TO UPPER FRAME ASM

2 PIN HOUSING TO PASSENGERS POWER SEAT

1 MISC SWITCHES & HOUSINGS

WIRE ASM-A/V & WIRE ASM-CHASSIS TO PASSENGERS SWITCHES

GROMMET 23942-02-000

CABLE ASM (BLK) GENERATOR GROUND TO STUD ON FRAME RAIL

CABLE ASM (BLU) TO LEVELING SYSTEM PUMP

4-PIN HSG TO ELECTRIC STEP

1000 MM LOOP BEHIND GENERATOR FOR TRAY MOVEMENT

TIE UP TO FRAME CENTERSECTION HERE

2-PIN HSG TO STEP COVER

2-PIN HSG TO DRIVERS POWER SEAT

CLAMP TO REAR SIDE OF GENERATOR HERE

15-PIN HSG TO AWNING CONTROL

CHASSIS SUPPLIED GROUNDS 2

CHASSIS SUPPLIED POSITIVES 2

CABLE ASM (RED) 3

CABLE ASM (GRN) (FROM COACH SIDE OF BATTERY DISCONNECT) 2 3
CABLE ASM (GRN) (TO GENERATOR)

30 PIN HOUSING TO WIRE ASM-IP,MAIN 2

10-PIN HSG TO GENERATOR

2-PIN HSG TO FOG LAMP

2-PIN HSG TO FOG LAMP

CABLE ASM (GRN) & CABLE ASM (BLK) (TO GENERATOR)

265 CODES/STANDARDS-CSA/CMVSS

1B1 CODES/STANDARDS USA

1B1 265

FIRST USED 14 P40U

DO NOT SCALE DRAWING

TITLE: WIRING INSTL-CHASSIS

SHEET 4 PART NO 185932 REV

02-May-2014

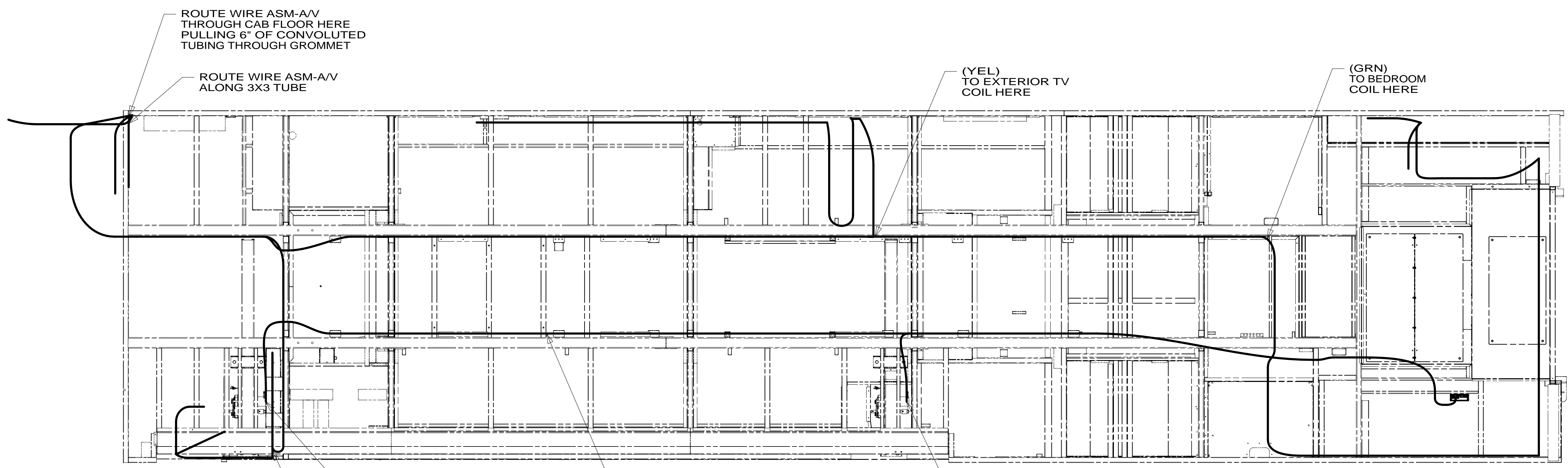
- NOTES:
- 3 SEE BATTERY INSTL FOR ADDITIONAL INFORMATION.
 - 2 SEE WIRING INSTL-FRONT END FOR ADDITIONAL INFORMATION.
 - 1 SEE WIRE ASM-CHASSIS FOR ADDITIONAL INFORMATION

FOR ELECTRICAL TORQUE SPECIFICATIONS SEE DWG NO. 128783-01-000

FOR ELECTRICAL CALLOUTS SEE DWG NO. 121339-01-000

VIEW DA

* 185932 * A



ROUTE WIRE ASM-A/V THROUGH CAB FLOOR HERE PULLING 6" OF CONVOLUTED TUBING THROUGH GROMMET

ROUTE WIRE ASM-A/V ALONG 3X3 TUBE

(YEL) TO EXTERIOR TV COIL HERE

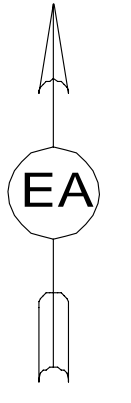
(GRN) TO BEDROOM COIL HERE

FRONT LEFT FRONT RAM
2 PIN HSG
TO SLIDEOUT RAM MOTOR
CIRCUITS LLS,LLT
3 PIN HSG
TO SLIDEOUT RAM ENCODER
CIRCUITS GGG,GGJ,GGH

WIRE ASM-SLIDEOUT RAMS
171917-05-000

FRONT LEFT REAR RAM
2 PIN HSG
TO SLIDEOUT RAM MOTOR
CIRCUITS LLU,LLW
3 PIN HSG
TO SLIDEOUT RAM ENCODER
CIRCUITS GGG,GGJ,GGH

(BRN)
TO LOUNGE TV
COIL HERE



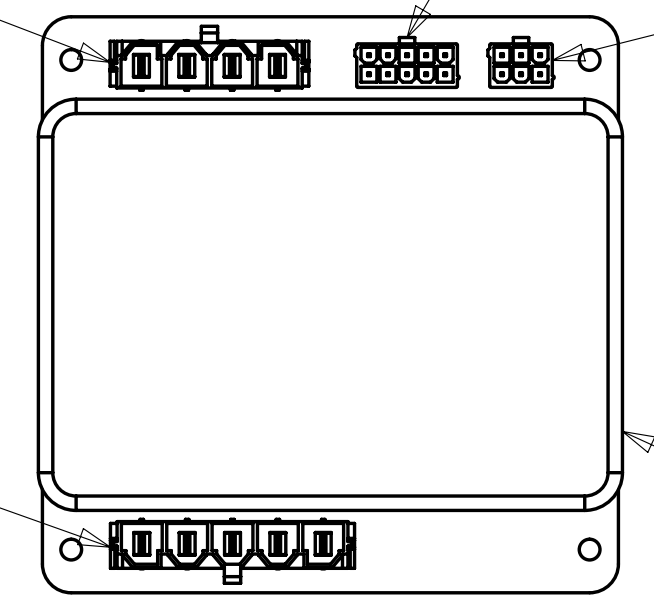
WIRE ASM-SLIDEOUT POWER
14952-37-000
4 PIN HSG
CIRCUITS
LLK,LLL,LLM,LLN

FROM WIRE ASM-CHASSIS
10 PIN HSG
CIRCUITS
DU,GGD,GGE,
GGF,DR,VVP,
DDJ,VVN,VVR

FROM WIRE ASM-SLIDEOUT
RAM,LEFT
6 PIN HSG
CIRCUITS
GGH,GGG,GGJ
GGL,GGK,GGM

WIRE ASM-SLIDEOUT RAM,LEFT
5 PIN HSG
CIRCUITS
LLS,LLT,LLW,LLU

CONTROL-SLIDEOUT
171058-02-000
SCREW
G39-08-12U (4)
FUSE-5 AMP
62901-02-000



VIEW EA

1. ALL WIRES TO BE CLAMPED WITH 10495-01-000 OR WIRE TIE 8343-02-000 EVERY 600MM, UNLESS OTHERWISE SPECIFIED.

NOTES:

265 CODES/STANDARDS-CSA/CMVSS

1B1 CODES/STANDARDS USA

1B1 265

FIRST USED
14 P40U

DO NOT SCALE DRAWING

TITLE: **WIRING INSTL-CHASSIS**

SHEET 5 PART NO **185932** REV

FOR ELECTRICAL TORQUE SPECIFICATIONS SEE DWG NO. 128783-01-000

FOR ELECTRICAL CALLOUTS SEE DWG NO. 121339-01-000

* 185932 * A