



DANGER

Danger of electrical shock, burns or death. Always remove all power sources before attempting any repair, service or diagnostic work. Power can be present from shore power, generator, inverter or battery. All power sources must be disabled and secured before performing any service.

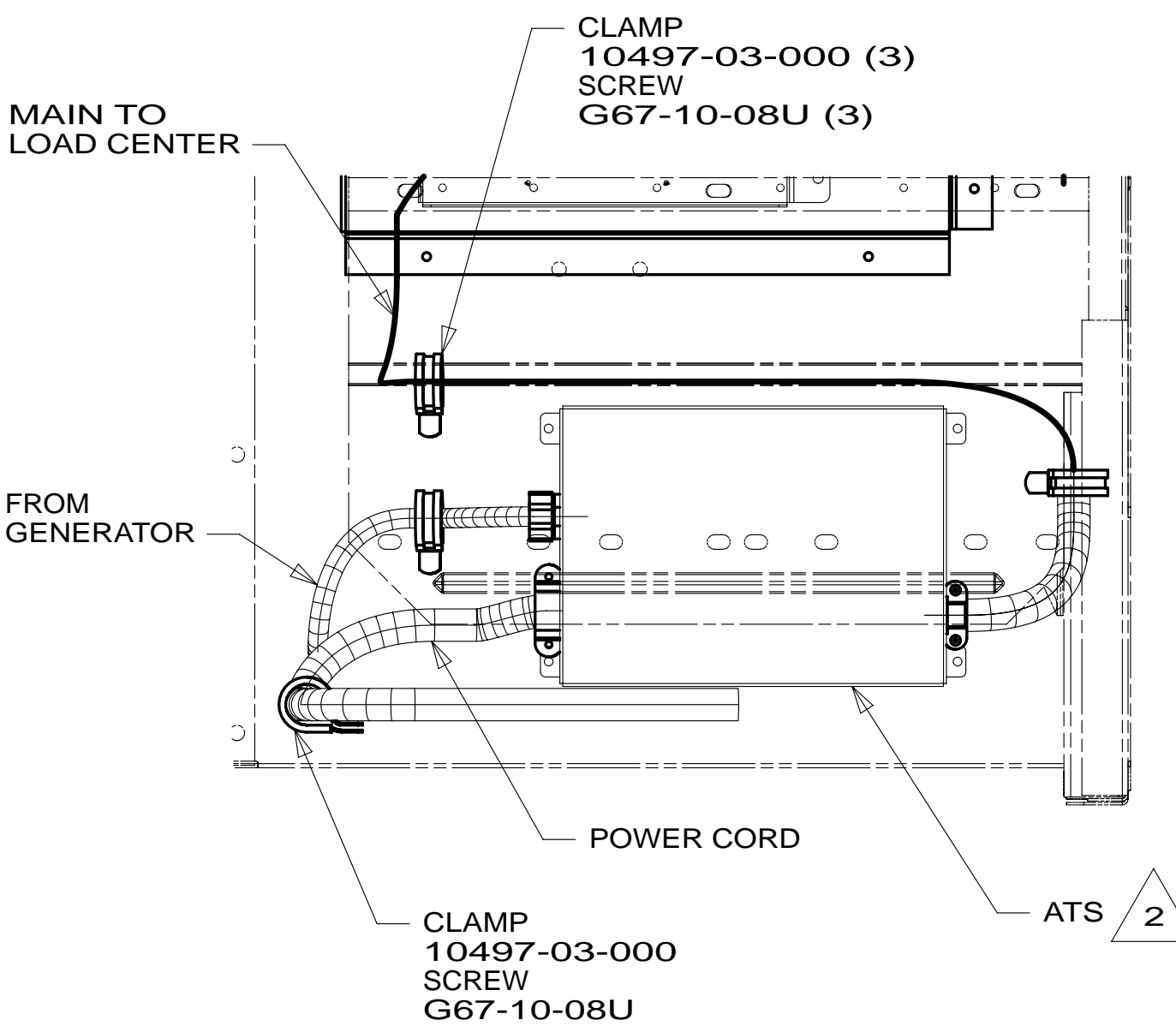
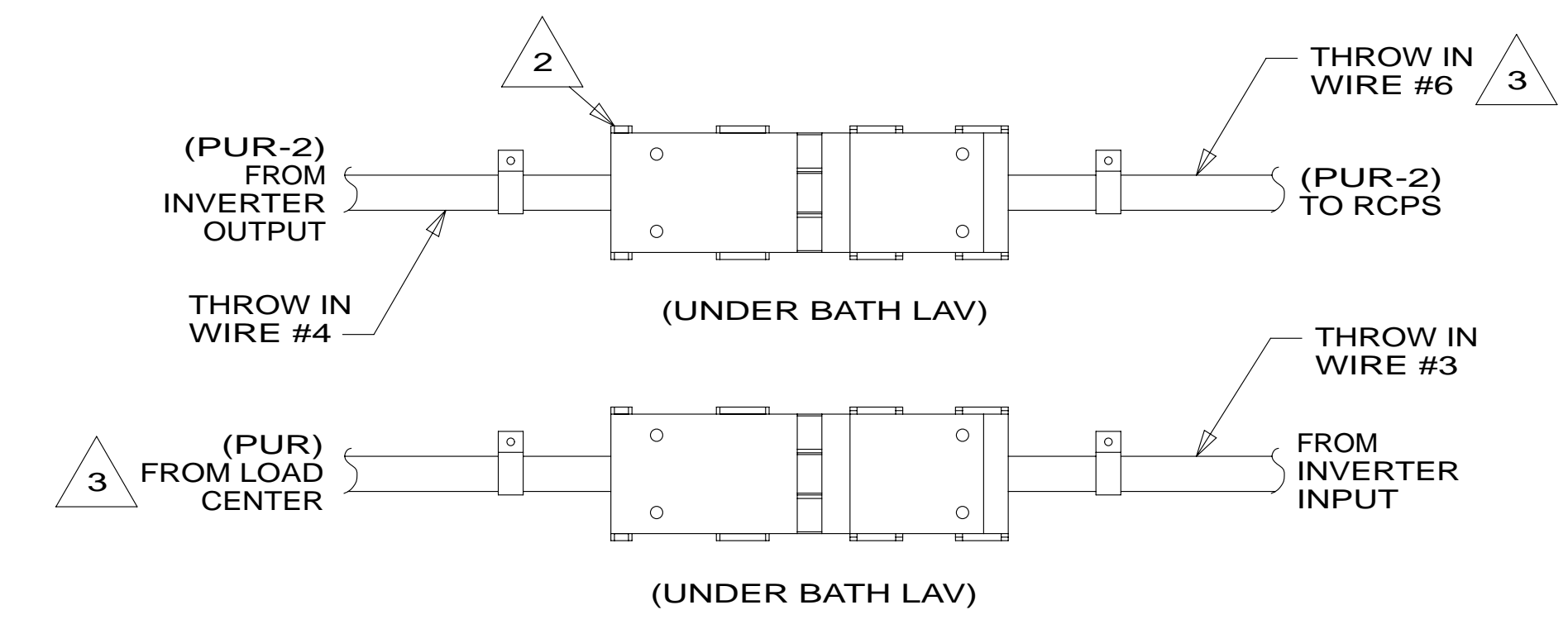
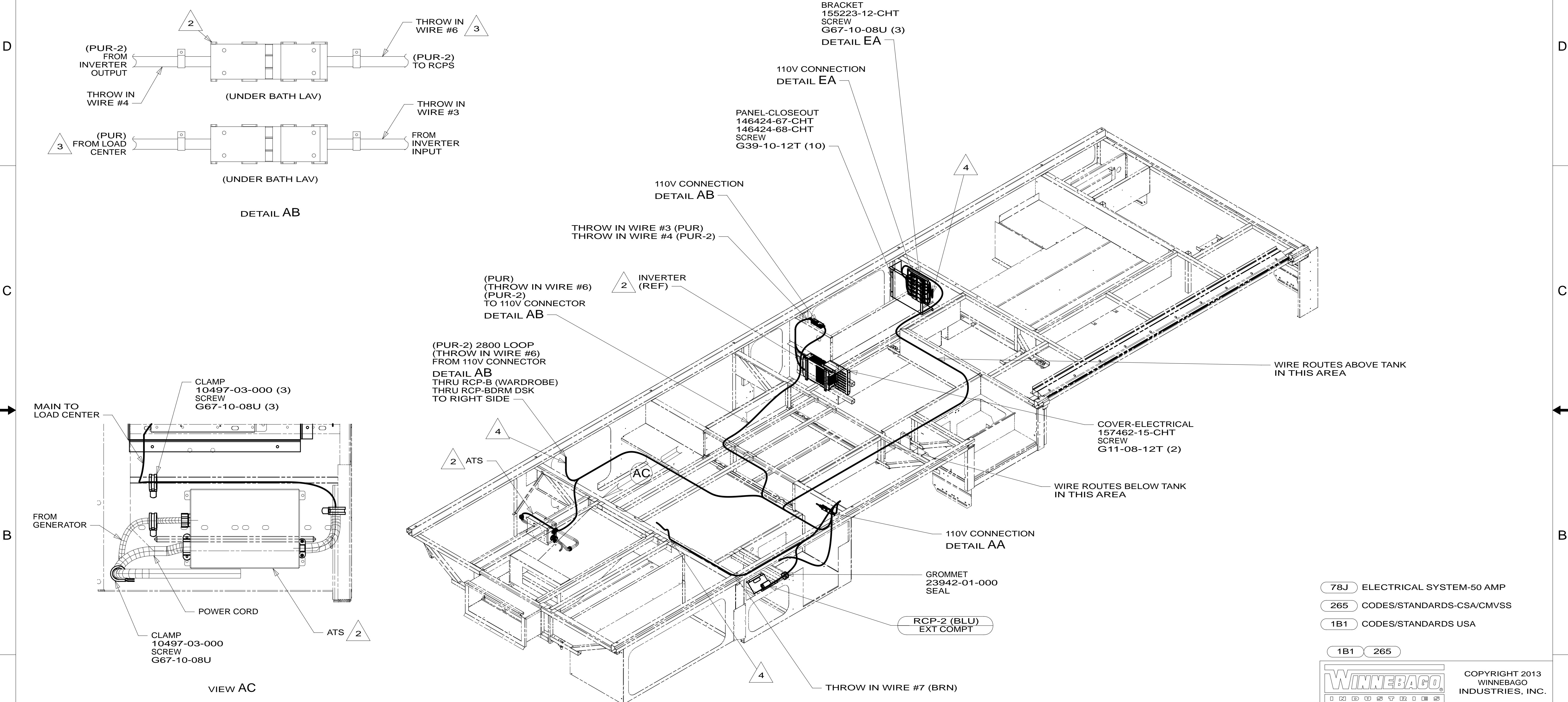


CAUTION

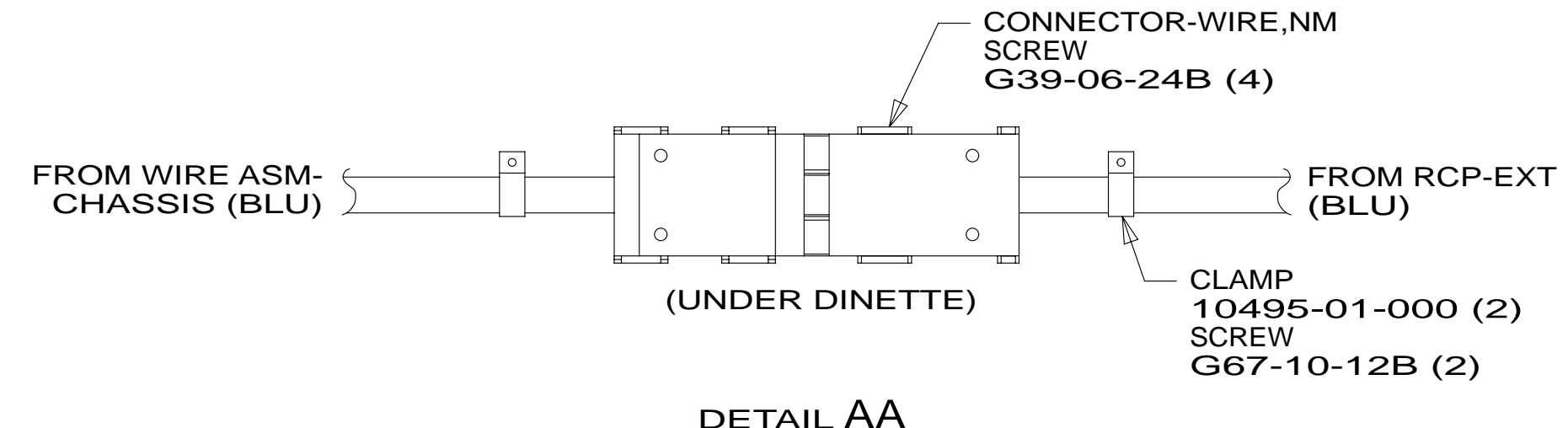
If you lack the skills, tools or equipment to perform diagnostic or repair work leave such work to an authorized Winnebago Industries dealer or other qualified shop.

DRAWING NO.	FEATURE
185857-12	1B1 78J
185857-16	265 78J

RELEASE	REV/DATE	DWG NO	185857
REV ZONE	REVISION RECORD	DATE	DFT-ORIG



- NOTES:
- WIRES ROUTED UNDER FLOOR.
 - SEE LOAD CENTER/ATS ASM FOR ADDITIONAL INFORMATION.
 - WITHOUT INVERTER THROW IN #2 (PUR-2) CONNECTS TO (PUR) FROM LOAD CENTER.
 - WIRE ROUTED THROUGH FLOOR IN THIS AREA.
 - ALL WIRES TO BE SECURED WITH CLAMP 10495 OR 10497 OR WIRE TIE 8343 OR 108046 EVERY 600MM, USE SCREW G67-XX-XXX OR G56-XX-XXX AS APPROPRIATE FOR INSTALLATION.



FOR ELECTRICAL TORQUE SPECIFICATIONS SEE DWG NO. 128783-01-000

FOR ELECTRICAL CALLOUTS SEE DWG NO. 121339-01-000

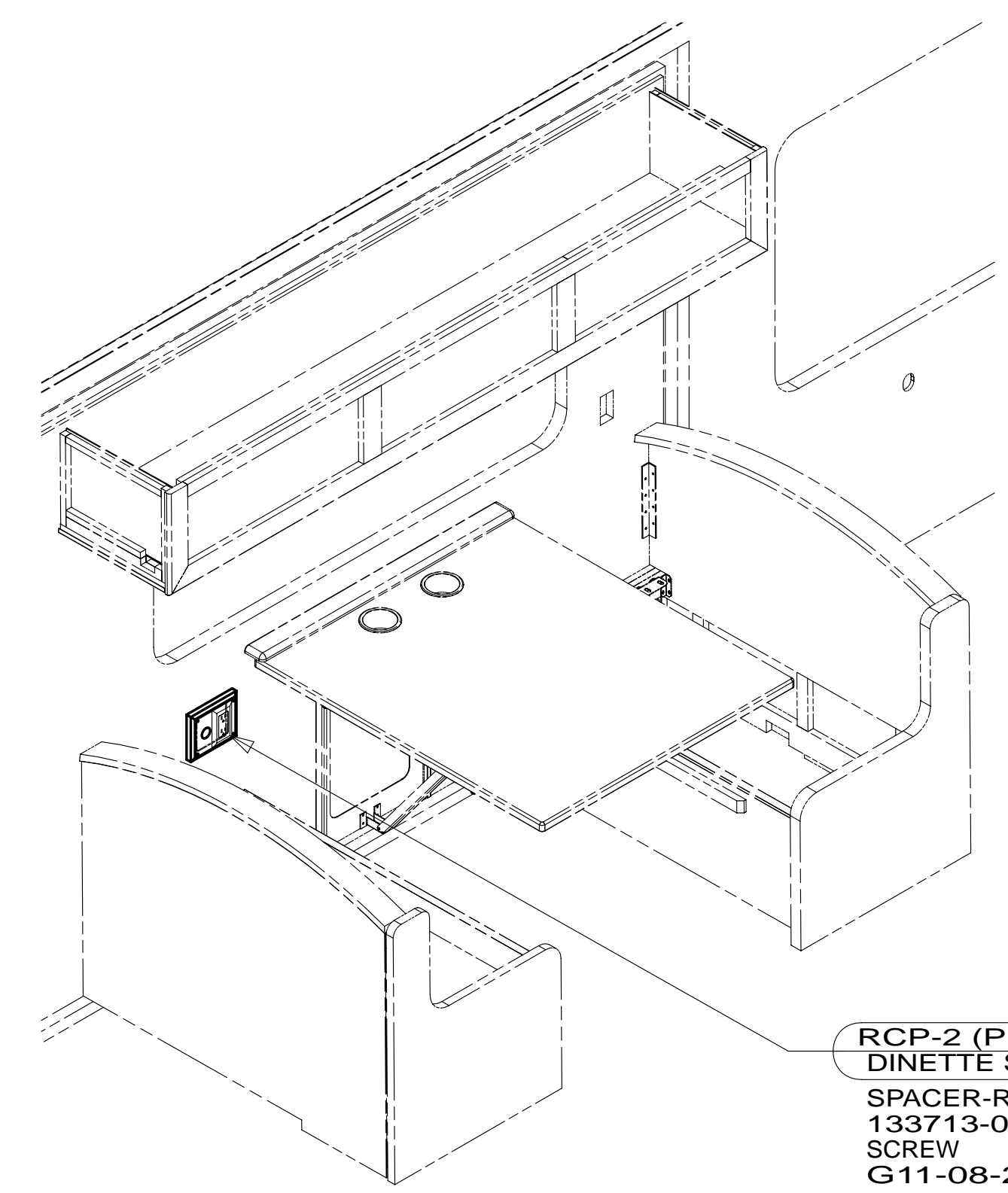
- 78J ELECTRICAL SYSTEM-50 AMP
- 265 CODES/STANDARDS-CSA/CMVSS
- 1B1 CODES/STANDARDS USA

1B1 265

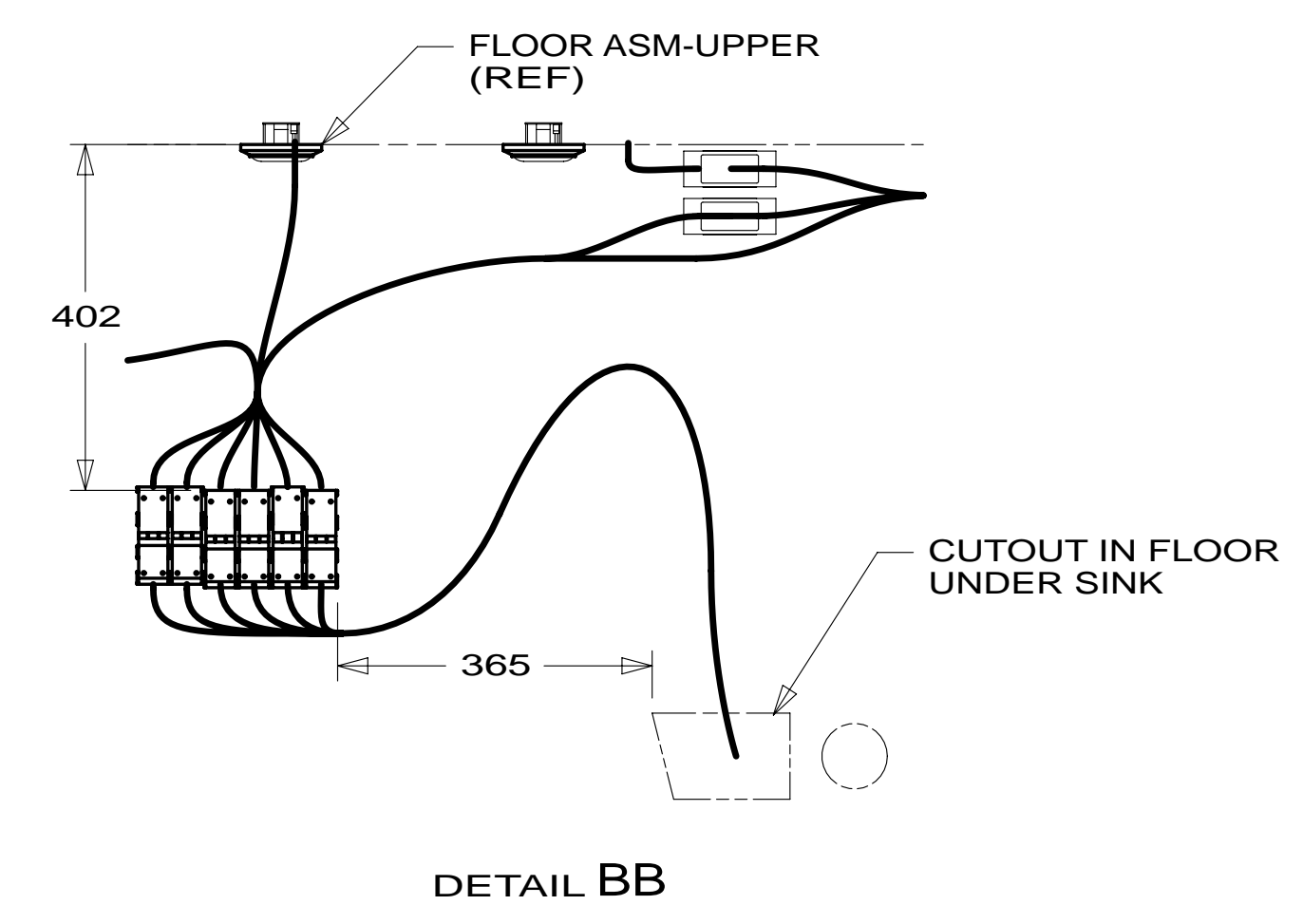
WINNEBAGO COPYRIGHT 2013 WINNEBAGO INDUSTRIES, INC.

DFT-ORIG	ORIG. DATE
CHKR	ALL DIMENSIONS ARE IN MILLIMETERS
P.E.	FIRST USED
M.E.	14 D33C
DSNR	MATERIAL:
UNSPECIFIED TOLERANCES ARE:	
WHOLE DIM (X)	: 3
ONE-PLACE (X.X)	: 1.5
TWO-PLACE (X.XX)	: 0.50
ANGLE	: 1°
THIRD ANGLE PROJECTION	
DO NOT SCALE DRAWING	REFER TO ES0018 FOR FASTENER TIGHTENING GUIDELINES
TITLE: WIRING INSTL-BODY,110V	
SHEET 1 OF 6	PART NO 185857 REV
REF:	1 18-Jun-2013

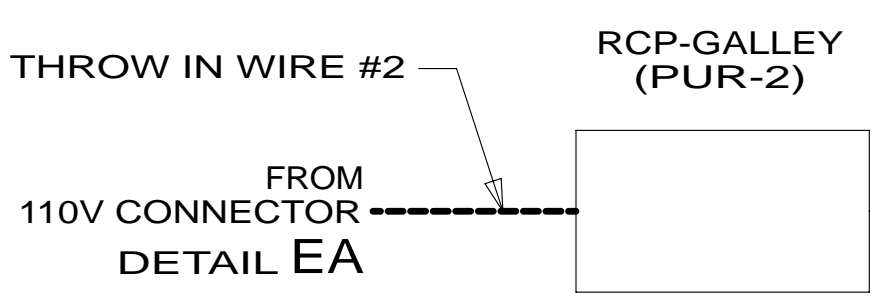
* 185857 *



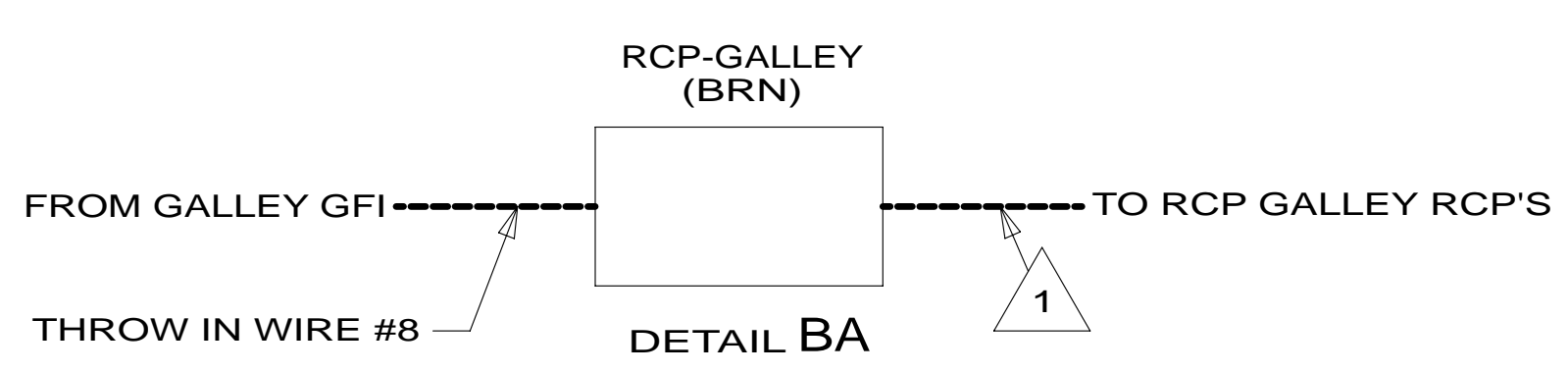
DETAIL BE 14W



DETAIL BB



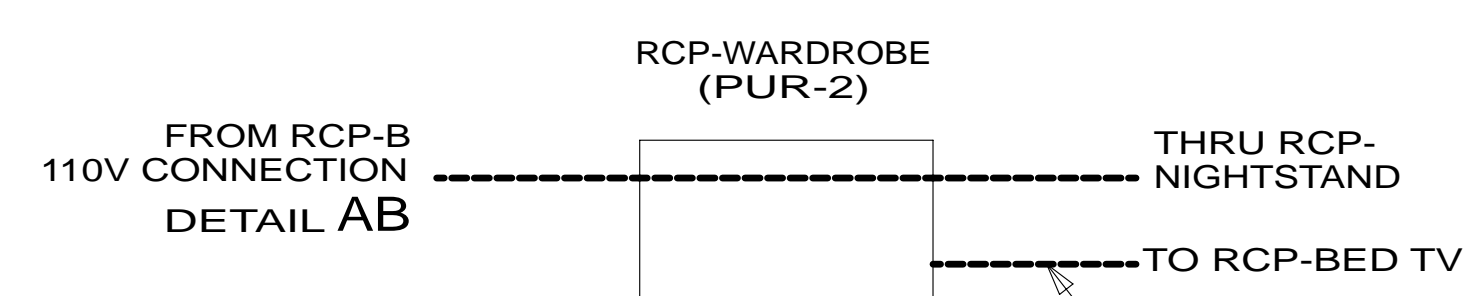
DETAIL BC 14W



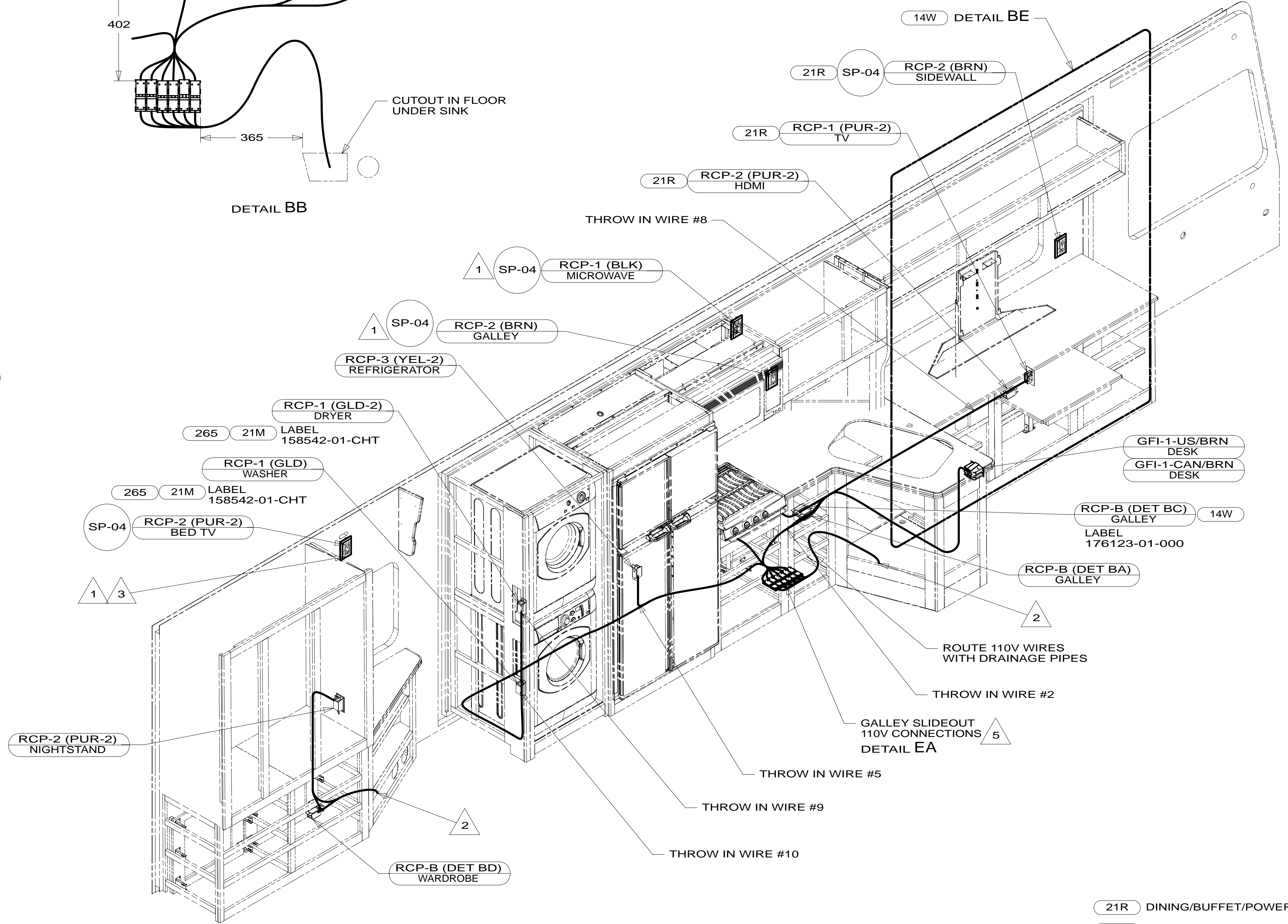
DETAIL BA



DETAIL BD 61K



- NOTES:
- 5 LOCATING DIMENSION SEE DETAIL BB.
 - 4. ALL WIRES TO BE SECURED WITH CLAMP 10495 OR 10497 OR WIRE TIE 8343 OR 108046 EVERY 600MM, USE SCREW G67-XX-XXX OR G56-XX-XXX AS APPROPRIATE FOR INSTALLATION.
 - 3 SEE WIRING INSTALLATION TV/DVD FOR ADDITIONAL INFORMATION.
 - 2 WIRE ROUTES THRU FLOOR IN THIS AREA.
 - 1 WIRE ROUTED IN SIDEWALL



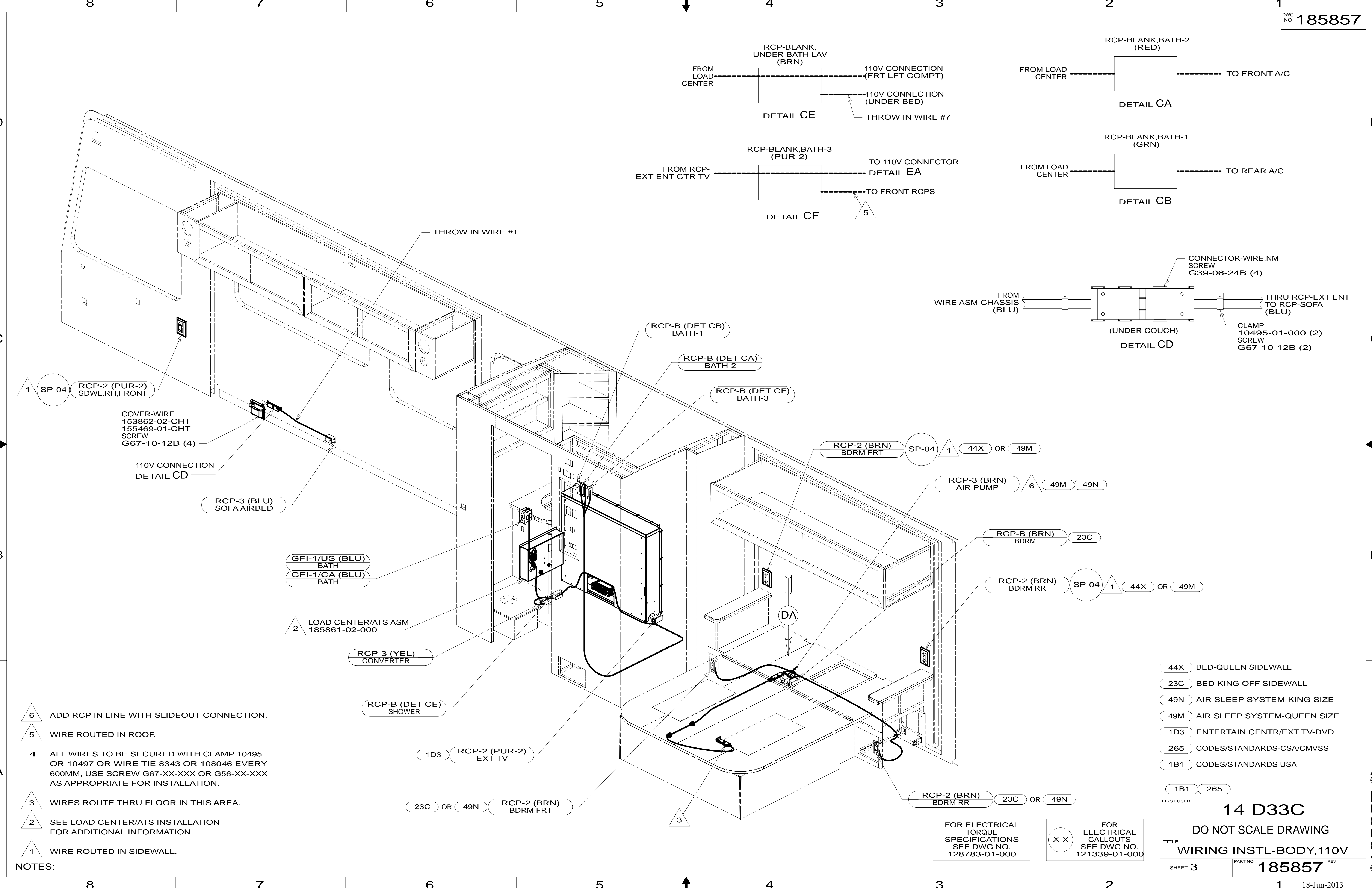
- 21R DINING/BUFFET/POWERED TV
- 14W DINETTE
- 21M WASHER/DRYER PREP
- 265 CODES/STANDARDS-CSA/CMVSS
- 1B1 CODES/STANDARDS USA

FOR ELECTRICAL TORQUE SPECIFICATIONS SEE DWG NO. 128783-01-000

FOR ELECTRICAL CALLOUTS SEE DWG NO. 121339-01-000

FIRST USED	
14 D33C	
DO NOT SCALE DRAWING	
TITLE: WIRING INSTL-BODY, 110V	
SHEET 2	PART NO 185857 REV

* 185857 *



1 SP-04 RCP-2 (PUR-2) SDWL,RH,FRONT

COVER-WIRE
153862-02-CHT
155469-01-CHT
SCREW
G67-10-12B (4)

110V CONNECTION
DETAIL CD

RCP-3 (BLU)
SOFA AIRBED

GFI-1/US (BLU)
BATH
GFI-1/CA (BLU)
BATH

2 LOAD CENTER/ATS ASM
185861-02-000

RCP-3 (YEL)
CONVERTER

RCP-B (DET CE)
SHOWER

1D3 RCP-2 (PUR-2)
EXT TV

23C OR 49N RCP-2 (BRN)
BDRM FRT

RCP-BLANK, UNDER BATH LAV (BRN)
FROM LOAD CENTER
110V CONNECTION (FRT LFT COMPT)
DETAIL CE
110V CONNECTION (UNDER BED)
THROW IN WIRE #7

RCP-BLANK, BATH-3 (PUR-2)
FROM RCP-EXT ENT CTR TV
TO 110V CONNECTOR
DETAIL EA
TO FRONT RCPS
5

RCP-BLANK, BATH-2 (RED)
FROM LOAD CENTER
TO FRONT A/C
DETAIL CA

RCP-BLANK, BATH-1 (GRN)
FROM LOAD CENTER
TO REAR A/C
DETAIL CB

CONNECTOR-WIRE, NM
SCREW
G39-06-24B (4)
FROM WIRE ASM-CHASSIS (BLU)
THRU RCP-EXT ENT TO RCP-SOFA (BLU)
CLAMP
10495-01-000 (2)
SCREW
G67-10-12B (2)
DETAIL CD
(UNDER COUCH)

RCP-2 (BRN) BDRM FRT SP-04 1 44X OR 49M

RCP-3 (BRN) AIR PUMP 6 49M 49N

RCP-B (BRN) BDRM 23C

RCP-2 (BRN) BDRM RR SP-04 1 44X OR 49M

RCP-2 (BRN) BDRM RR 23C OR 49N

- NOTES:
- 6 ADD RCP IN LINE WITH SLIDEOUT CONNECTION.
 - 5 WIRE ROUTED IN ROOF.
 - 4. ALL WIRES TO BE SECURED WITH CLAMP 10495 OR 10497 OR WIRE TIE 8343 OR 108046 EVERY 600MM, USE SCREW G67-XX-XXX OR G56-XX-XXX AS APPROPRIATE FOR INSTALLATION.
 - 3 WIRES ROUTE THRU FLOOR IN THIS AREA.
 - 2 SEE LOAD CENTER/ATS INSTALLATION FOR ADDITIONAL INFORMATION.
 - 1 WIRE ROUTED IN SIDEWALL.

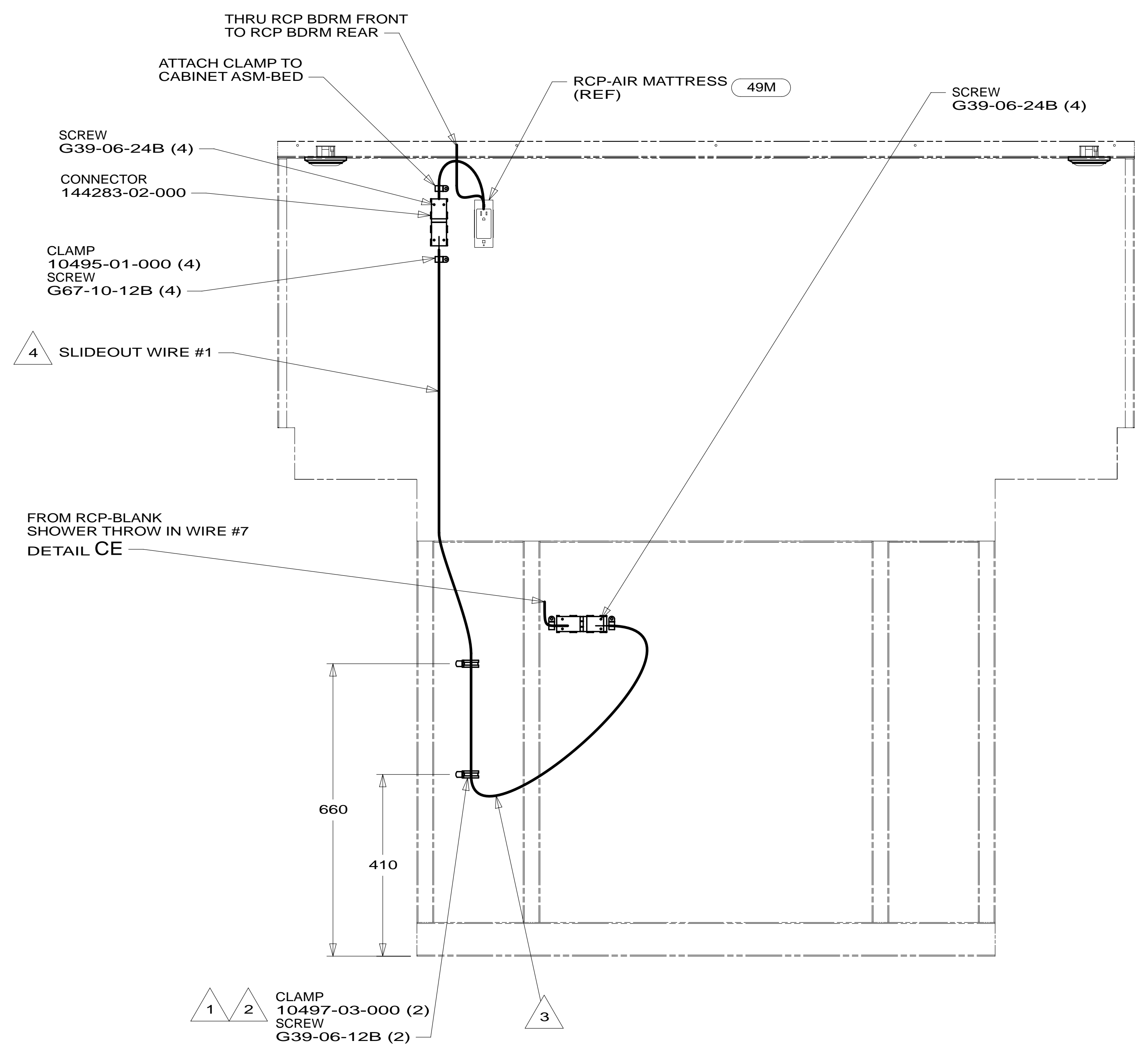
FOR ELECTRICAL TORQUE SPECIFICATIONS SEE DWG NO. 128783-01-000

FOR ELECTRICAL CALLOUTS SEE DWG NO. 121339-01-000

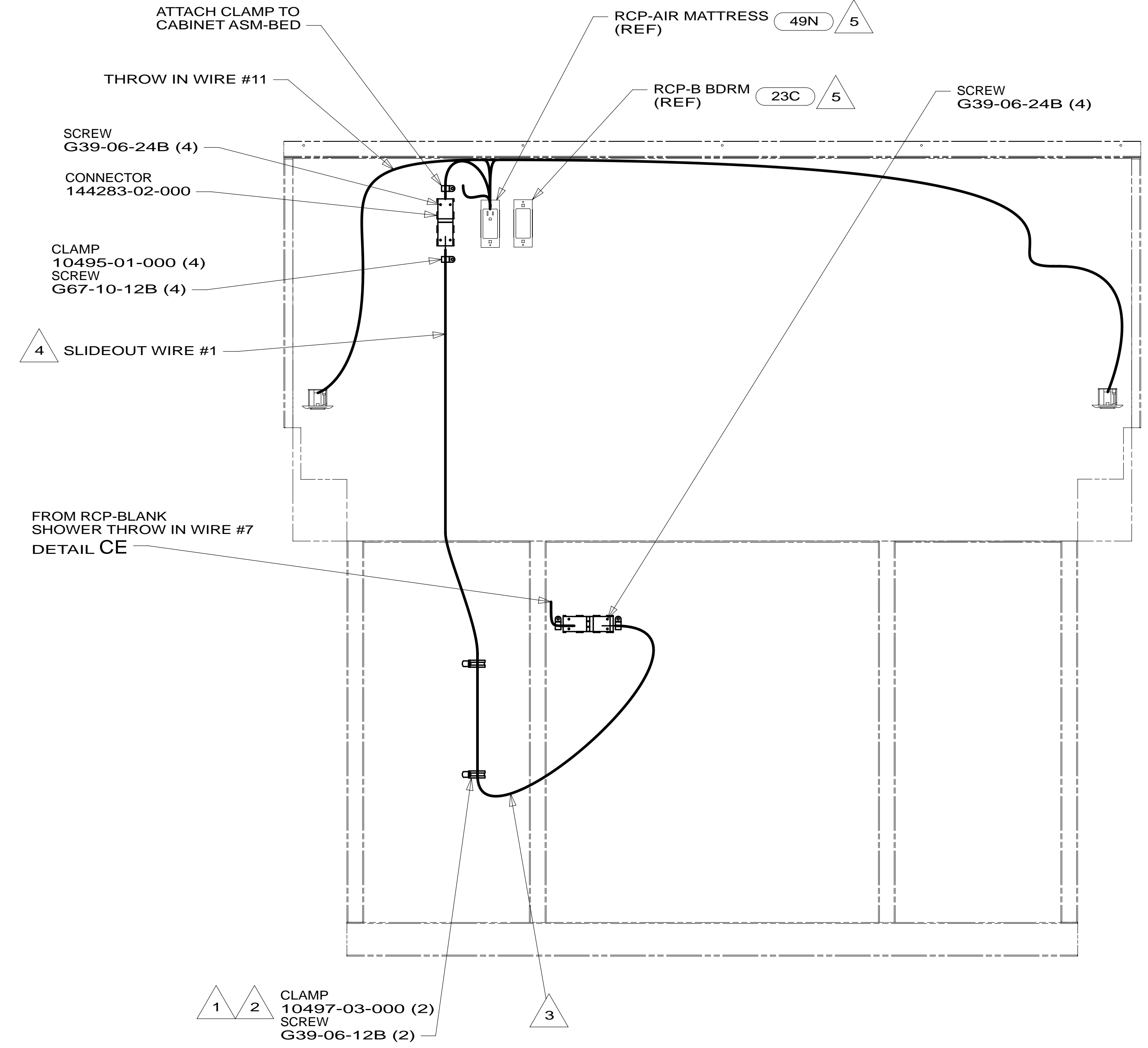
- 44X BED-QUEEN SIDEWALL
- 23C BED-KING OFF SIDEWALL
- 49N AIR SLEEP SYSTEM-KING SIZE
- 49M AIR SLEEP SYSTEM-QUEEN SIZE
- 1D3 ENTERTAIN CENTR/EXT TV-DVD
- 265 CODES/STANDARDS-CSA/CMVSS
- 1B1 CODES/STANDARDS USA

FIRST USED		14 D33C	
DO NOT SCALE DRAWING			
TITLE: WIRING INSTL-BODY, 110V			
SHEET 3	PART NO	185857	REV
		18-Jun-2013	

* 185857 *



VIEW DA 44X OR 49M



VIEW DA 23C OR 49N

- NOTES:
- 5 WITH KING BED OPTION, CUT THE THROW IN WIRE WHERE IT LOOPS THROUGH THE RCP-B OR RCP-3 AND ATTACH MOLEX CONNECTOR TO ONE END.
 - 4 SEE LOAD CENTER/ATS ASM FOR ADDITIONAL INFORMATION.
 - 3 MAKE LOOP AS SMALL AS POSSIBLE WHEN SLIDEOUT IS COMPLETELY RETRACTED.
 - 2 RUN 12V WIRE ALONG WITH SLIDEOUT WIRE #3.
 - 1 WIRE MUST BE ROUTED THROUGH CLAMPS AS SHOWN.

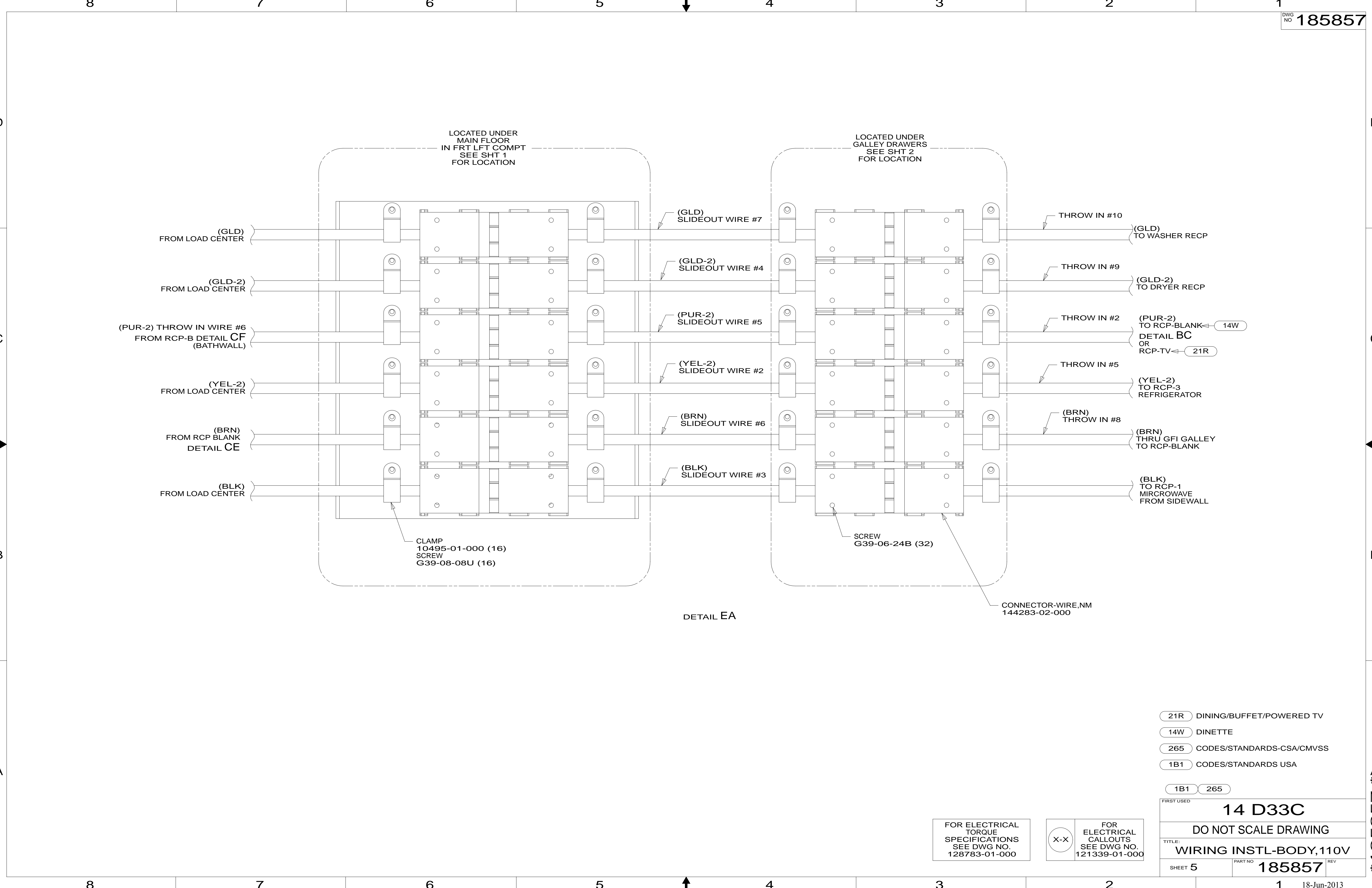
- 44X BED-QUEEN SIDEWALL
- 23C BED-KING OFF SIDEWALL
- 49N AIR SLEEP SYSTEM-KING SIZE
- 49M AIR SLEEP SYSTEM-QUEEN SIZE
- 265 CODES/STANDARDS-CSA/CMVSS
- 1B1 CODES/STANDARDS USA

FOR ELECTRICAL TORQUE SPECIFICATIONS SEE DWG NO. 128783-01-000

FOR ELECTRICAL CALLOUTS SEE DWG NO. 121339-01-000

FIRST USED	
14 D33C	
DO NOT SCALE DRAWING	
TITLE: WIRING INSTL-BODY, 110V	
SHEET 4	PART NO 185857 REV
18-Jun-2013	

* 185857 *



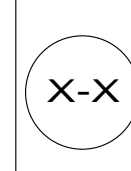
DETAIL EA

- (21R) DINING/BUFFET/POWERED TV
- (14W) DINETTE
- (265) CODES/STANDARDS-CSA/CMVSS
- (1B1) CODES/STANDARDS USA

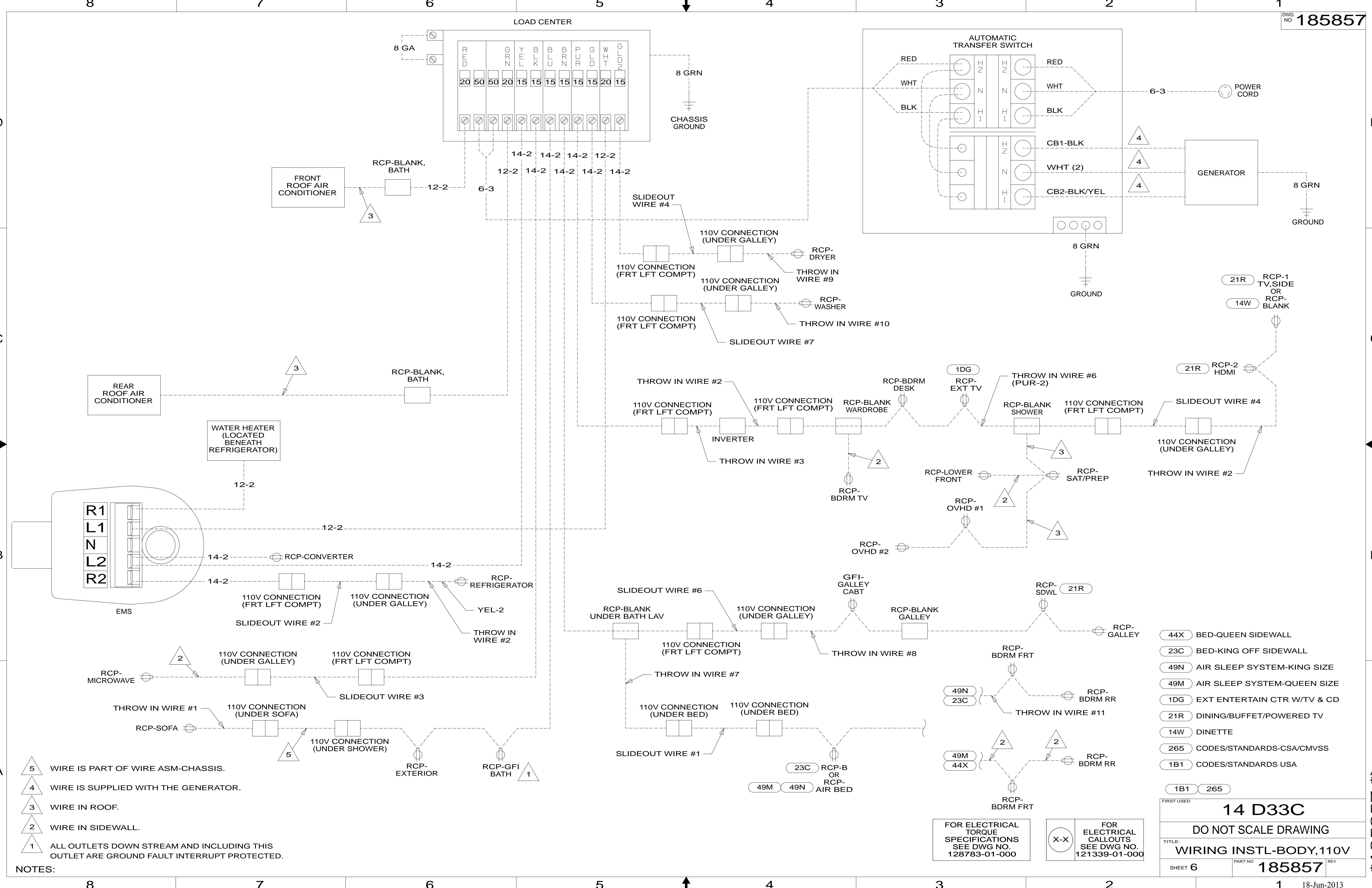
FIRST USED	
14 D33C	
DO NOT SCALE DRAWING	
TITLE: WIRING INSTL-BODY, 110V	
SHEET 5	PART NO 185857 REV
18-Jun-2013	

FOR ELECTRICAL TORQUE SPECIFICATIONS SEE DWG NO. 128783-01-000

FOR ELECTRICAL CALLOUTS SEE DWG NO. 121339-01-000



* 185857 * A



- NOTES:
- 5 WIRE IS PART OF WIRE ASM-CHASSIS.
 - 4 WIRE IS SUPPLIED WITH THE GENERATOR.
 - 3 WIRE IN ROOF.
 - 2 WIRE IN SIDEWALL.
 - 1 ALL OUTLETS DOWN STREAM AND INCLUDING THIS OUTLET ARE GROUND FAULT INTERRUPT PROTECTED.

- 44X BED-QUEEN SIDEWALL
- 23C BED-KING OFF SIDEWALL
- 49N AIR SLEEP SYSTEM-KING SIZE
- 49M AIR SLEEP SYSTEM-QUEEN SIZE
- 1DG EXT ENTERTAIN CTR W/TV & CD
- 21R DINING/BUFFET/POWERED TV
- 14W DINETTE
- 265 CODES/STANDARDS-CSA/CMVSS
- 1B1 CODES/STANDARDS USA

FIRST USED

14 D33C

DO NOT SCALE DRAWING

TITLE: **WIRING INSTL-BODY, 110V**

SHEET 6 PART NO **185857** REV

18-Jun-2013

FOR ELECTRICAL TORQUE SPECIFICATIONS SEE DWG NO. 128783-01-000

X-X FOR ELECTRICAL CALLOUTS SEE DWG NO. 121339-01-000

* 185857 * A