



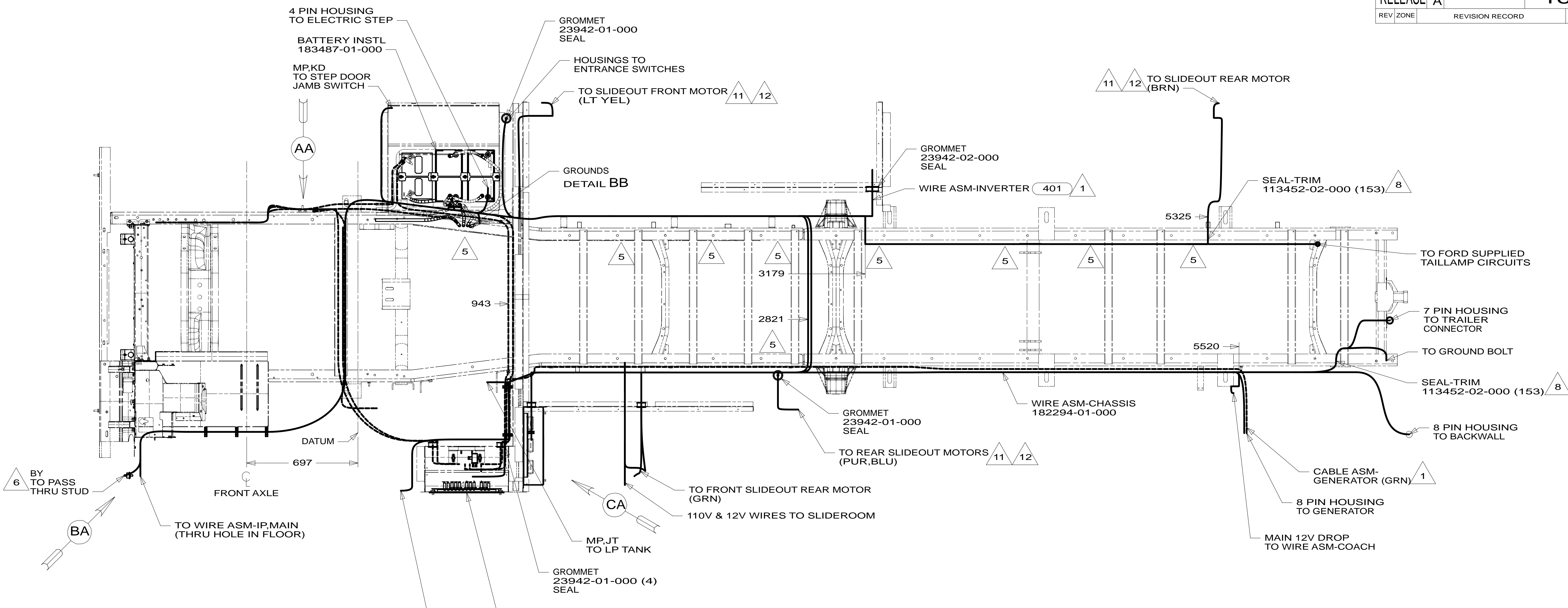
**DANGER**

**Danger of electrical shock, burns or death.** Always remove all power sources before attempting any repair, service or diagnostic work. Power can be present from shore power, generator, inverter or battery. All power sources must be disabled and secured before performing any service.

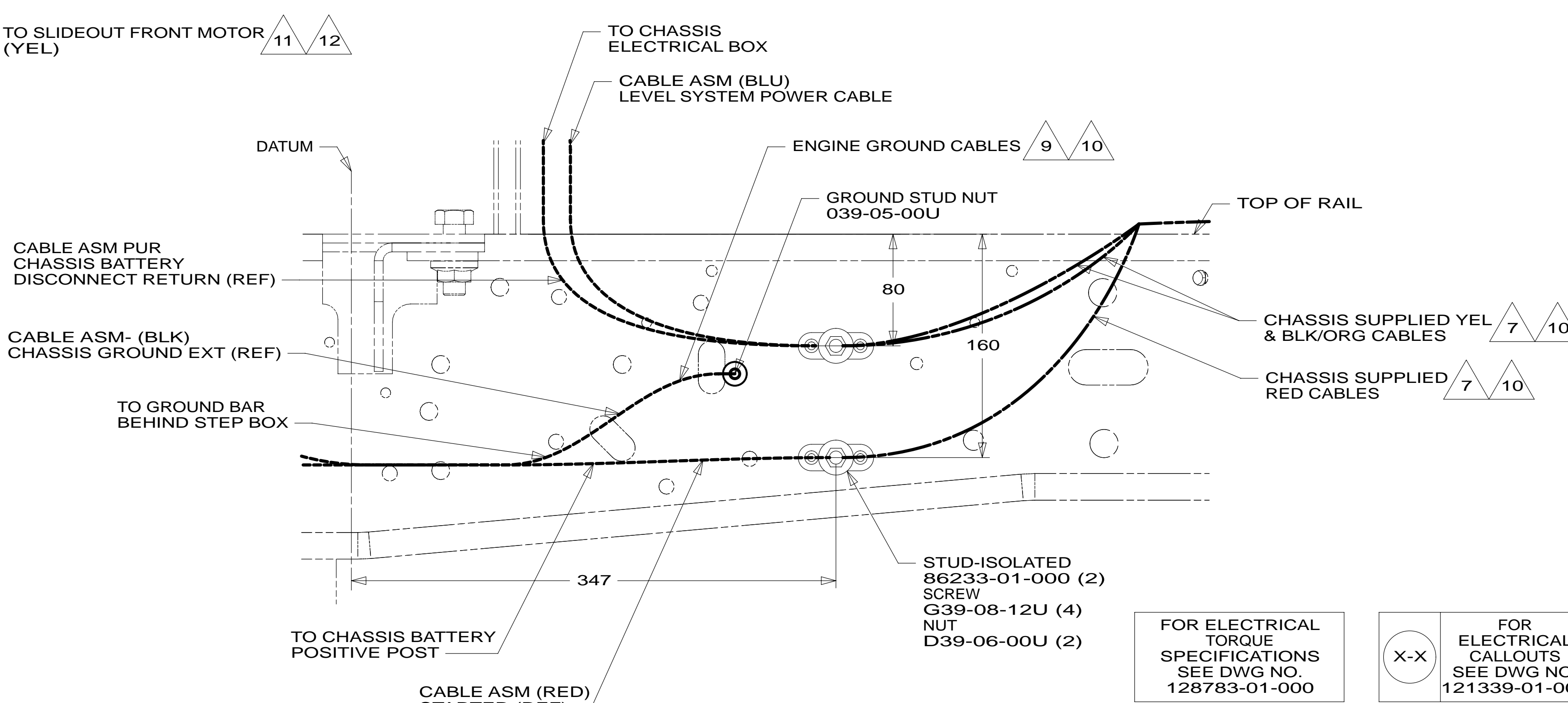


**CAUTION**

If you lack the skills, tools or equipment to perform diagnostic or repair work leave such work to an authorized Winnebago Industries dealer or other qualified shop.



- NOTES:
- 12 WIRE ROUTES THROUGH FLOOR IN THIS AREA.
  - 11 COIL WIRE AND LEAVE IN COMPARTMENT FOR TRANSPORTATION PURPOSES.
  - 10 SUPPLIED WITH CHASSIS
  - 9 CUT CHASSIS SUPPLIED BATTERY CABLE 700MM FROM BATTERY TERMINAL AND ADD TERMINAL 8348-01-000 TO CUT END.
  - 8 COVER SHARP EDGES WHERE WIRE CROSSES FRAME RAILS.
  - 7 CUT CHASSIS SUPPLIED POSITIVE BATTERY CABLE 150MM FROM BATTERY TERMINAL END, DISCARD TERMINAL END AND SEPARATE WIRES. ADD TERMINAL 8348-01-000 AND HEAT SHRINK 176567-04-000 TO RED CABLE (CHASSIS STARTER) AND COMBINE YELLOW (CHASSIS POWER SISTRIBUTION) AND BLACK/ORANGE (CHASSIS ALTERNATOR) WIRES TOGETHER AND ADD TERMINAL 8348-01-000 AND HEAT SHRINK 176567-02-000. COIL EXCESS CABLE ALONG FRAME RAIL JUST BEHIND RADIATOR AND TIE UP WITH TIE-WIRE 8343-04-000.
  - 6 SEE WIRING INSTL-FRONT END FOR ADDITIONAL INFORMATION.
  - 5 CLAMP 83610-01-000, SCREW G11-10-16B.
  - 4. WIRE TIE 8343-04-000. FASTEN EVERY 600MM MINIMUM.
  - 3. ALL DIMENSIONS ARE FROM DATUM UNLESS OTHERWISE SPECIFIED.
  - 2. SECURE CONDUIT 41953, TAB AS REQUIRED, OVER ALL WIRES IN CONTACT WITH SHARP EDGES.
  - 1 SEE BATTERY INSTL FOR ADDITIONAL INFORMATION.



- 401 INVERTER-DC/AC, 1000 WATT
- 40A INVERTER-DC/AC WITHOUT
- 265 CODES/STANDARDS-CSA/CMVSS
- 1B1 CODES/STANDARDS USA

1B1 265

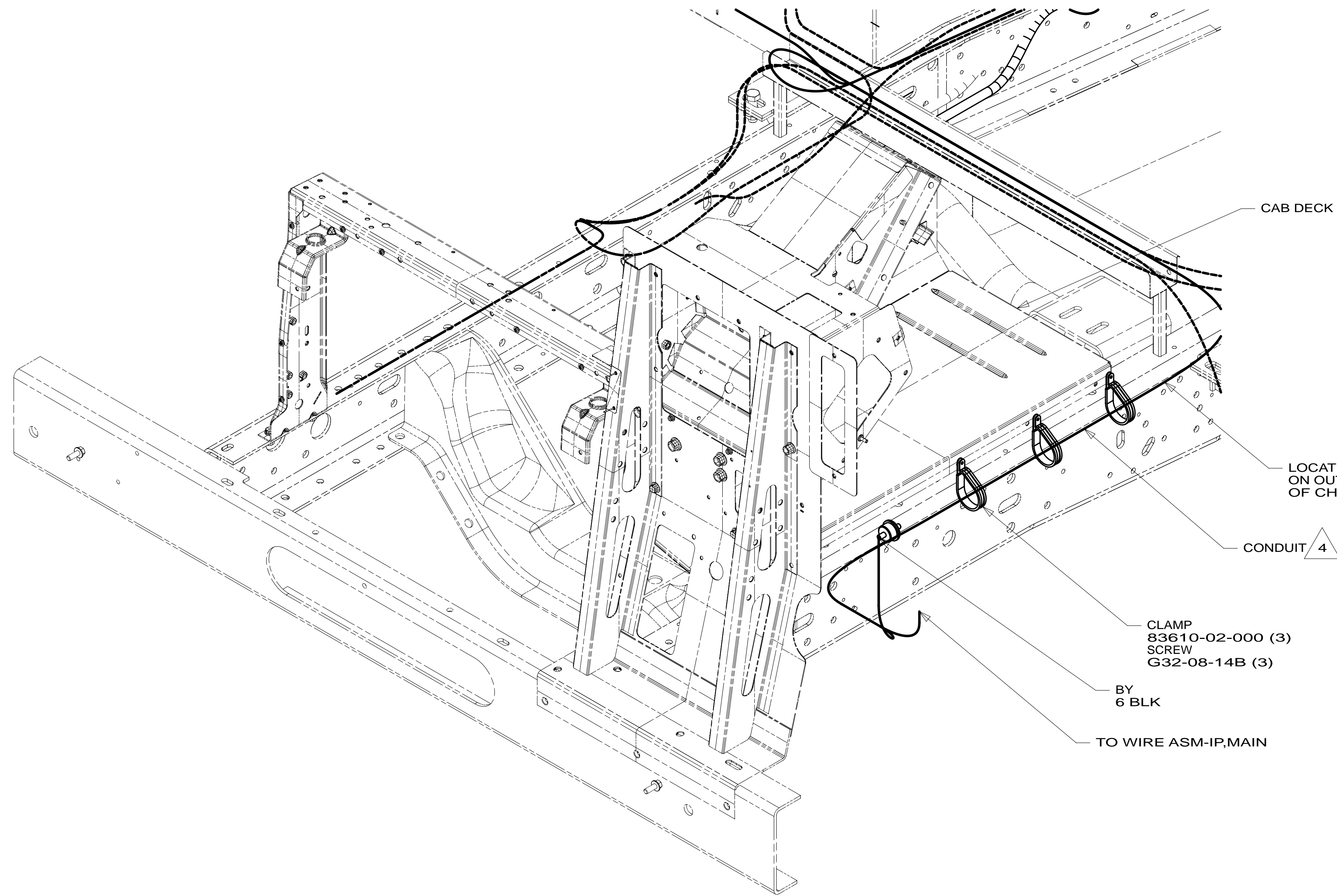
**WINNEBAGO** COPYRIGHT 2013 WINNEBAGO INDUSTRIES, INC.

DFTR	ORIG. DATE
CHKR	ALL DIMENSIONS ARE IN MILLIMETERS
P.E.	
M.E.	
DSNR	FIRST USED
<b>14 E27N</b>	
UNSPECIFIED TOLERANCES ARE:	
WHOLE DIM (X)	: 3
ONE-PLACE (X.X)	: 1.5
TWO-PLACE (X.XX)	: 0.50
ANGLE	: 1°
THIRD ANGLE PROJECTION	
DO NOT SCALE DRAWING REFER TO ES0018 FOR FASTENER TIGHTENING GUIDELINES	
TITLE: <b>WIRING INSTL-CHASSIS</b>	
SHEET 1 OF 3	PART NO 185720 REV
REF: 1	18-Jan-2013

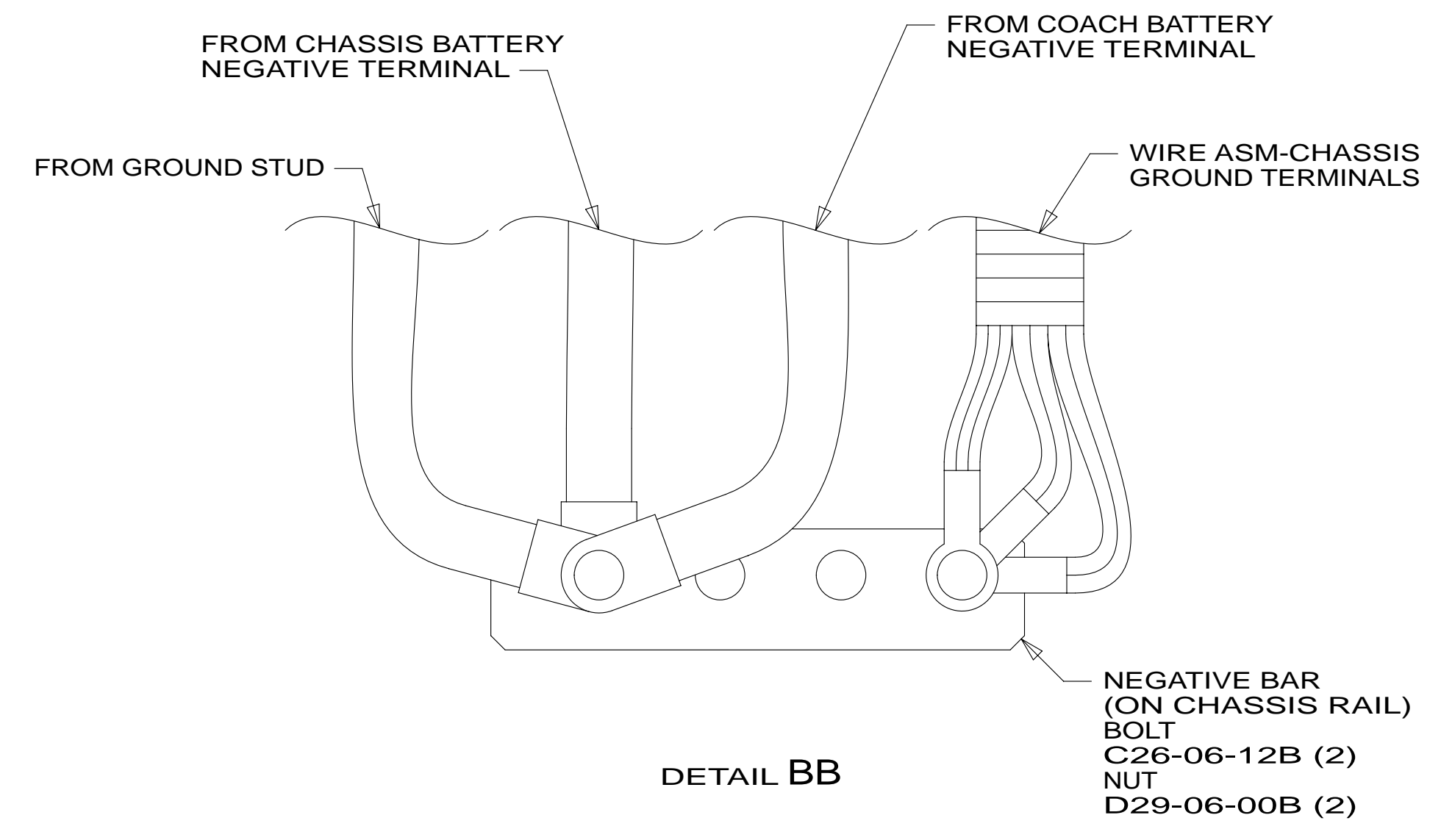
FOR ELECTRICAL TORQUE SPECIFICATIONS SEE DWG NO. 128783-01-000

FOR ELECTRICAL CALLOUTS SEE DWG NO. 121339-01-000

VIEW AA



VIEW BA



DETAIL BB

- NOTES:
- 4 COVER WITH CONDUIT 41953-10-000 AND 41953-11-000 AS REQUIRED.
  - 3. CONNECT CABLES TO COACH SIDE OF BATTERY DISCONNECT WHEN BATTERY DISCONNECT IS USED.
  - 2. ALL GROUND WIRE TO BE COVERED WITH TUBING 8041-02-000.
  - 1. CUT OFF EXCESS END OF WIRE TIE.

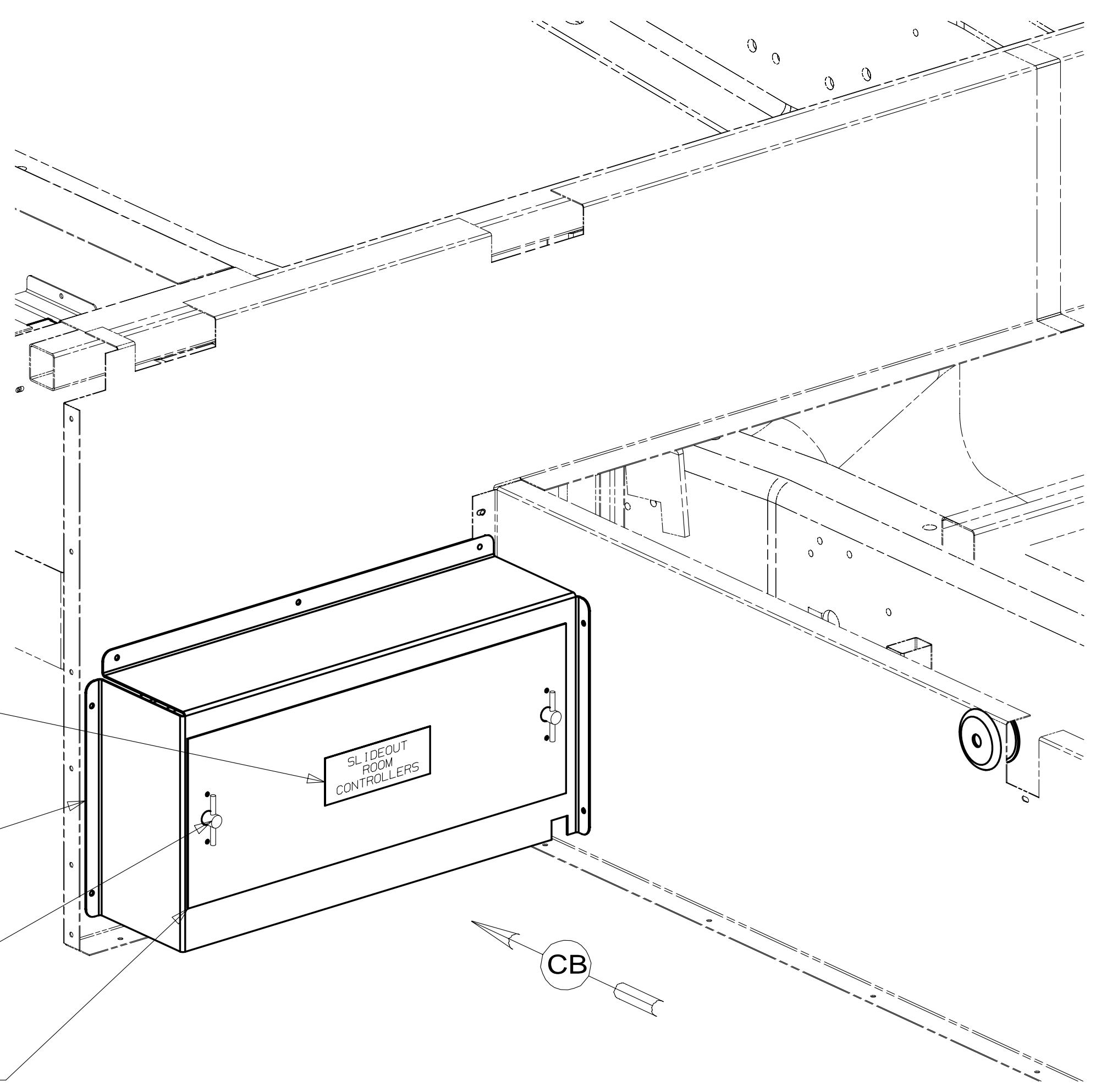
265 CODES/STANDARDS-CSA/CMVSS  
 1B1 CODES/STANDARDS USA

1B1 265

FIRST USED	<b>14 E27N</b>	
DO NOT SCALE DRAWING		
TITLE:	<b>WIRING INSTL-CHASSIS</b>	
SHEET 2	PART NO <b>185720</b>	REV

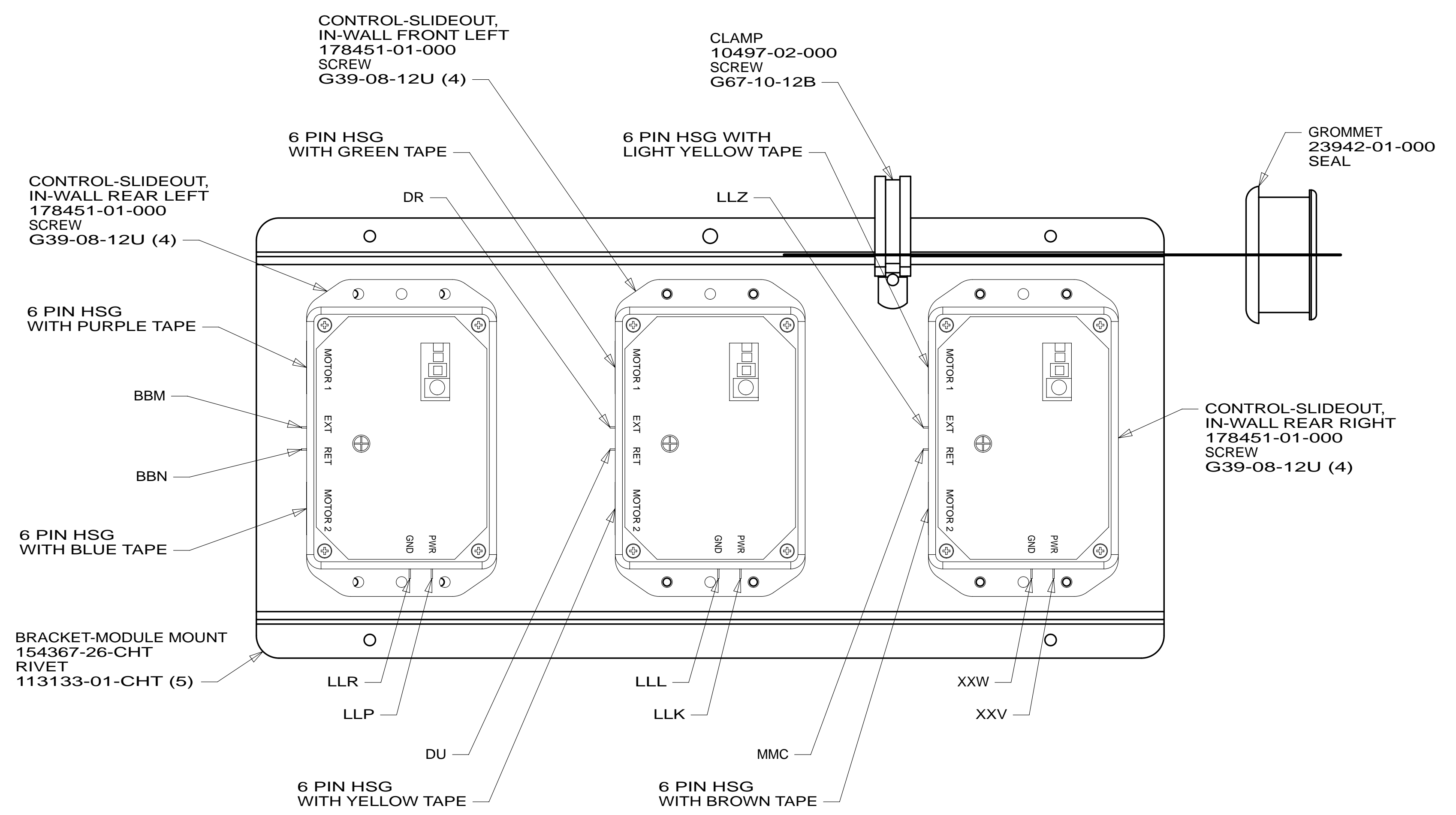
FOR ELECTRICAL TORQUE SPECIFICATIONS SEE DWG NO. 128783-01-000

X-X FOR ELECTRICAL CALLOUTS SEE DWG NO. 121339-01-000



- LABEL  
98379-09-000
- PANEL-COMPARTMENT  
170153-04-CHT  
SCREW  
G39-08-08U (6)
- LATCH  
98196-01-000 (2)  
RIVET  
H15-04-02R (4)
- DOOR-ELECTRICAL BOX  
142145-01-CHT  
SEAL  
092492-11-000

VIEW CA



VIEW CB

NOTES:  
1 SEE CHASSIS ELECTRICAL BOX ASM FOR ADDITIONAL INFORMATION.

FOR ELECTRICAL TORQUE SPECIFICATIONS SEE DWG NO. 128783-01-000

FOR ELECTRICAL CALLOUTS SEE DWG NO. 121339-01-000

265	CODES/STANDARDS-CSA/CMVSS
1B1	CODES/STANDARDS USA
1B1	265
FIRST USED	
<b>14 E27N</b>	
<b>DO NOT SCALE DRAWING</b>	
TITLE: <b>WIRING INSTL-CHASSIS</b>	
SHEET 3	PART NO <b>185720</b> REV
18-Jan-2013	