



**DANGER**

**Danger of electrical shock, burns or death.** Always remove all power sources before attempting any repair, service or diagnostic work. Power can be present from shore power, generator, inverter or battery. All power sources must be disabled and secured before performing any service.



**CAUTION**

If you lack the skills, tools or equipment to perform diagnostic or repair work leave such work to an authorized Winnebago Industries dealer or other qualified shop.

DRAWING NO.	MODEL
185668-01	L34T
185668-02	L38R

RELEASE	REV/DATE	DWG NO	185668
REV ZONE	REVISION RECORD	DATE	DTR-ORIG

		L34T	L38R
RED	1B1	136135-07-070	136135-07-081
	265	136136-07-070	136136-07-081
GRN	1B1	136135-08-070	136135-08-081
	265	136136-08-070	136136-08-081
YEL	1B1	136131-05-069	136131-05-080
	265	136134-05-069	136134-05-080
GLD	1B1	136131-10-069	136131-10-083
	265	136134-10-069	136134-10-083
GLD-2	1B1	136131-20-069	136131-20-065
	265	136134-20-069	136134-20-065
BLU	1B1	136131-02-088	136131-02-112
	265	136134-02-088	136134-02-112
BRN	1B1	136131-03-115	136131-03-200
	265	136134-03-115	136134-03-200
PUR	1B1	136131-04-210	136131-04-111
	265	136134-04-210	136134-04-111
WHT	1B1	136135-09-140	136135-09-118
	265	136136-09-140	136136-09-118

		L34T	L38R
ORG	1B1	136131-16-120	136131-16-101
	265	136134-16-120	136134-16-101
BLK	1B1	136131-06-069	136131-06-071
	265	136134-06-069	136134-06-071
GRY	1B1	136131-15-094	136131-15-063
	265	136134-15-094	136134-15-063
INVERTER CHARGER MAIN	1B1	136137-01-035	136137-01-040
	265	136138-01-035	136138-01-040
INVERTER CHARGER SUB MAIN	1B1	136137-01-035	136137-01-040
	265	136138-01-035	136138-01-040
CABLE ASM-MAIN,6 AWG		176841-01-028	176841-01-034
MAIN GROUND		136145-01-030	136145-01-025
ATS GROUND		136145-01-020	136145-01-020
INVERTER GROUND		136145-04-022	136145-04-022
GENERATOR CABLE ASM		136148-02-096	136148-02-109

- WTR HTR-10GAL/ELECTRIC/LPGAS
- FIREPLACE-ELECTRIC
- CODES/STANDARDS-CSA/CMVSS
- CODES/STANDARDS USA

**WINNEBAGO** COPYRIGHT 2014 WINNEBAGO INDUSTRIES, INC.

DTR	ORIG. DATE
CHKR	ALL DIMENSIONS ARE IN MILLIMETERS
P.E.	
M.E.	FIRST USED
DSNR	<b>14 L-SERIES</b>

UNSPECIFIED TOLERANCES ARE:

WHOLE DIM (X)	: 3
ONE-PLACE (X.X)	: 1.5
TWO-PLACE (X.XX)	: 0.50
ANGLE	: 1'

THIRD ANGLE PROJECTION

DO NOT SCALE DRAWING REFER TO ES0018 FOR FASTENER TIGHTENING GUIDELINES

TITLE: **LOAD CENTER/ATS ASM**

SHEET **1** OF **4** PART NO **185668** REV

SEE DETAIL BA FOR CONNECTOR INSTALLATION.

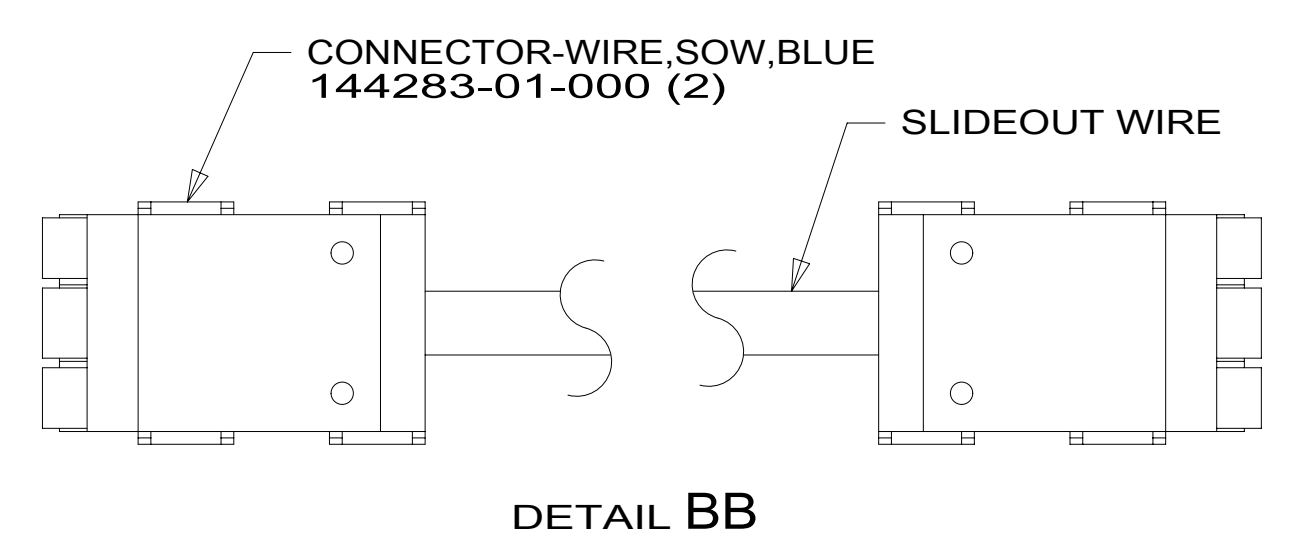
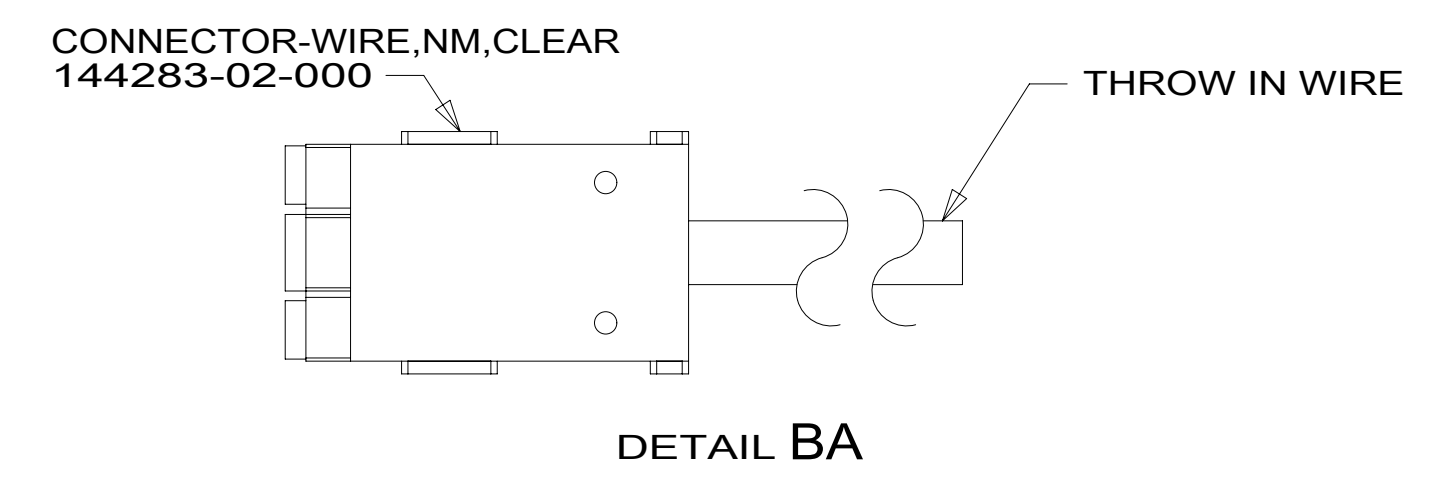
FOR ELECTRICAL TORQUE SPECIFICATIONS SEE DWG NO. 128783-01-000

FOR ELECTRICAL CALLOUTS SEE DWG NO. 121339-01-000

\* 185668 \*

		L34T	L38R
THROW IN WIRE #1	1B1	136131-05-025	136131-02-055
	265	136134-05-025	136134-02-055
THROW IN WIRE #2	1B1		136131-04-026
	265		136134-04-026
THROW IN WIRE #3	1B1	136131-02-064	136131-02-003
	265	136134-02-064	136134-02-003
THROW IN WIRE #4	1B1	136131-10-045	
	265	136134-10-045	
THROW IN WIRE #5	1B1	136131-20-045	
	265	136134-20-045	
THROW IN WIRE #6	1B1	136131-04-030	
	265	136134-04-030	
THROW IN WIRE #7	1B1	136131-02-032	
	265	136134-02-032	
THROW IN WIRE #8	1B1		
	265		
THROW IN WIRE #9	1B1		
	265		
THROW IN WIRE #10	1B1		
	265		
THROW IN WIRE #11	1B1		
	265		
THROW IN WIRE #12	1B1		
	265		

	L34T	L38R
SLIDEOUT #1 WIRE #1	136151-04-032	136151-02-014
SLIDEOUT #1 WIRE #2		
SLIDEOUT #1 WIRE #3		
SLIDEOUT #1 WIRE #4		
SLIDEOUT #2 WIRE #1	136151-05-028	136151-03-028
SLIDEOUT #2 WIRE #2	136151-02-028	136151-02-028
SLIDEOUT #2 WIRE #3	136151-06-028	
SLIDEOUT #2 WIRE #4	136151-10-028	
SLIDEOUT #2 WIRE #5	136151-20-028	



NOTES:

SEE DETAIL BB FOR CONNECTOR INSTALLATION.

SEE DETAIL BA FOR CONNECTOR INSTALLATION.

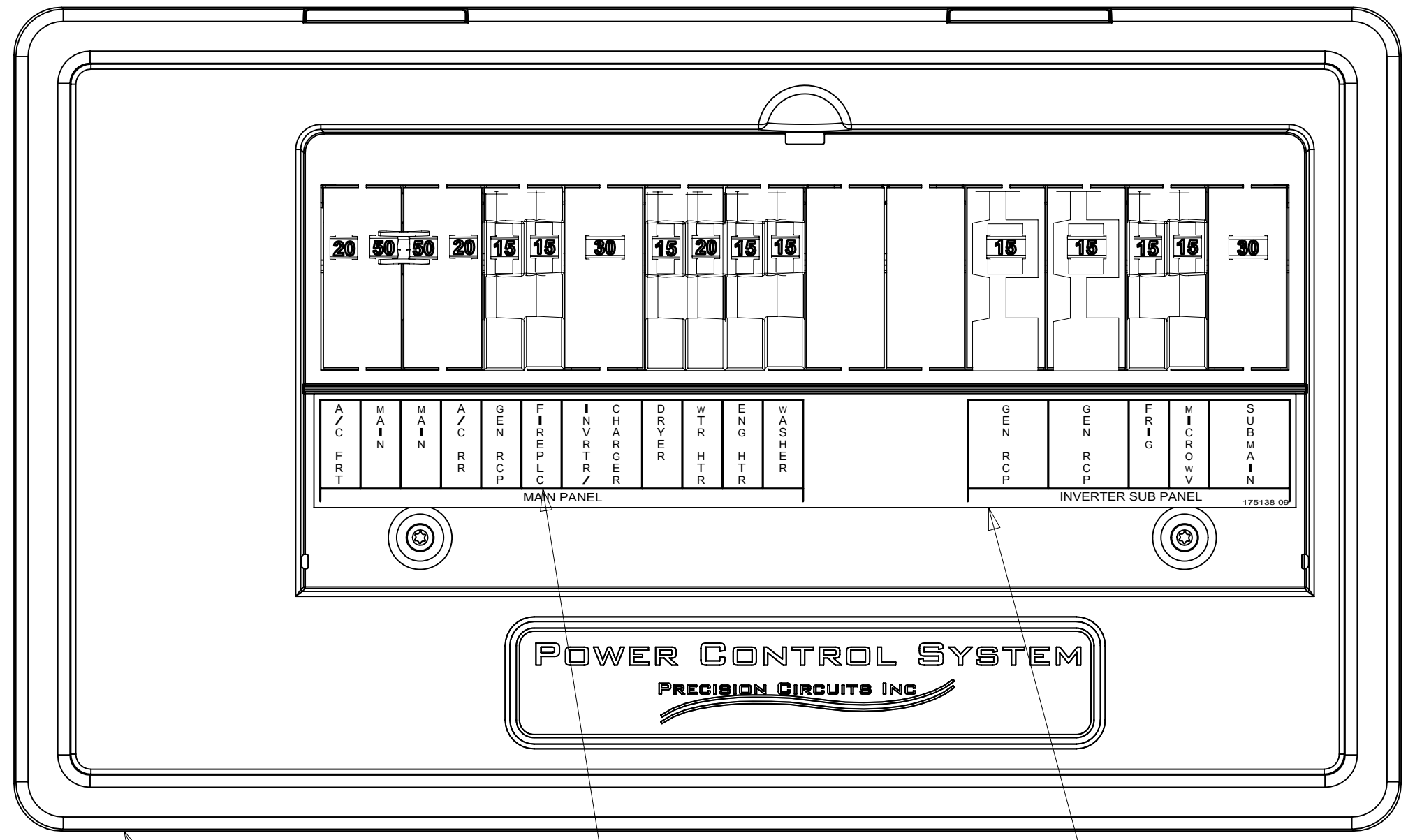
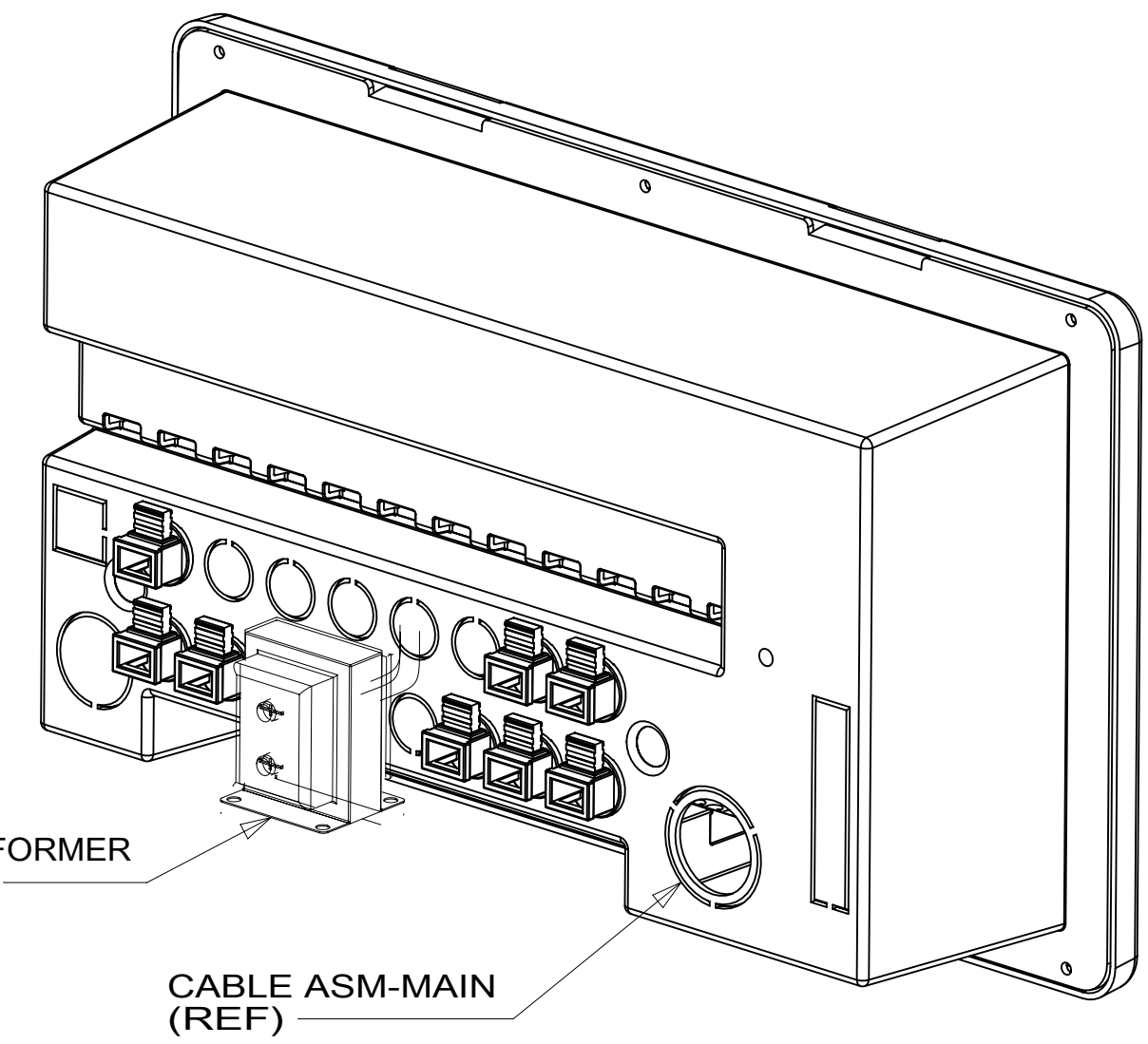
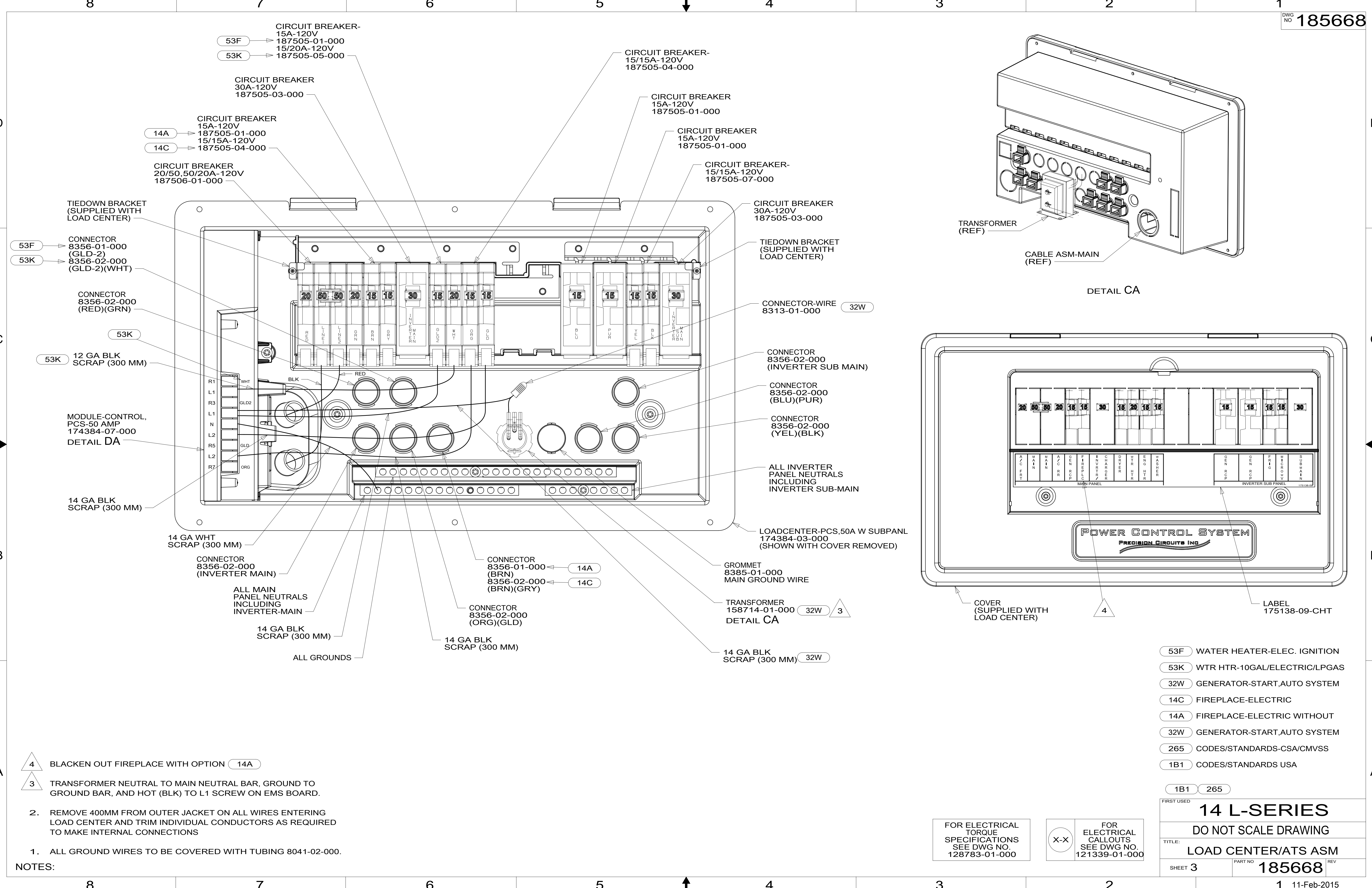
- EXT TV ENTERTAINMENT CENTER
- CODES/STANDARDS-CSA/CMVSS
- CODES/STANDARDS-USA

FIRST USED	<b>14 L-SERIES</b>
TITLE:	<b>DO NOT SCALE DRAWING</b>
SHEET 2	<b>LOAD CENTER/ATS ASM</b>
REV	<b>185668</b>
11-Feb-2015	

FOR ELECTRICAL TORQUE SPECIFICATIONS SEE DWG NO. 128783-01-000

FOR ELECTRICAL CALLOUTS SEE DWG NO. 121339-01-000

\* 185668 \*



- 53F WATER HEATER-ELEC. IGNITION
- 53K WTR HTR-10GAL/ELECTRIC/LPGAS
- 32W GENERATOR-START,AUTO SYSTEM
- 14C FIREPLACE-ELECTRIC
- 14A FIREPLACE-ELECTRIC WITHOUT
- 32W GENERATOR-START,AUTO SYSTEM
- 265 CODES/STANDARDS-CSA/CMVSS
- 1B1 CODES/STANDARDS USA

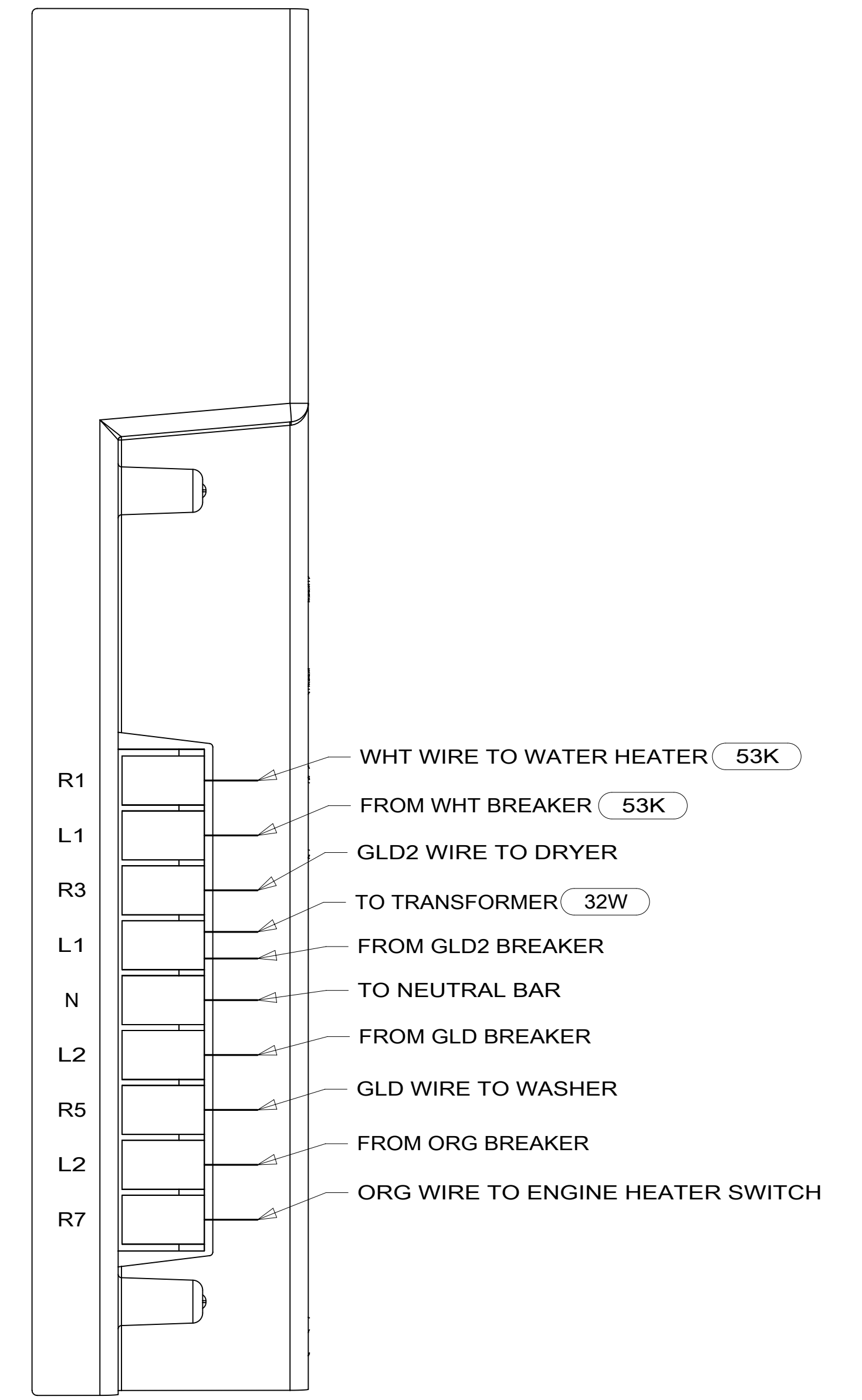
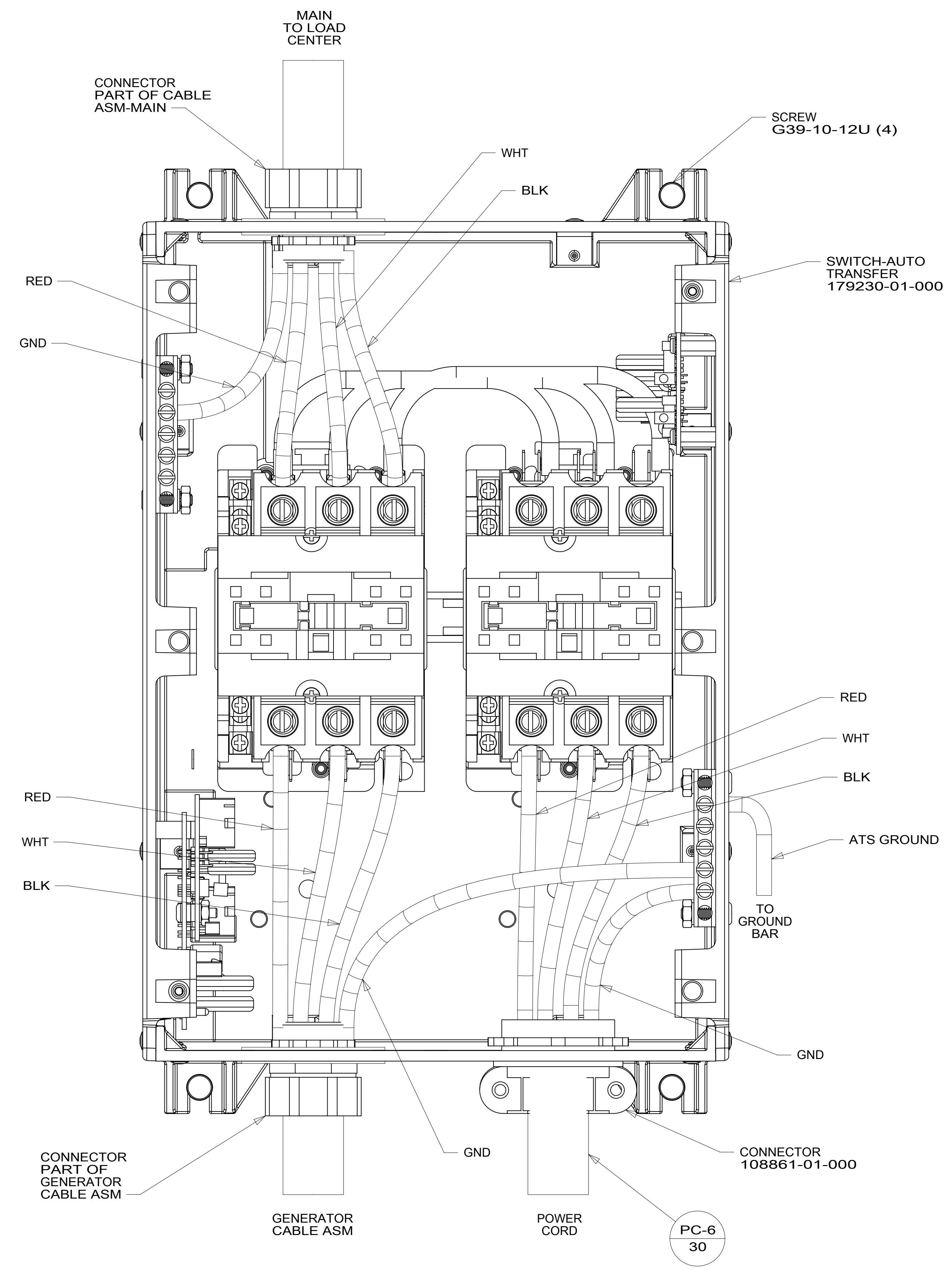
1B1	265
FIRST USED	
<b>14 L-SERIES</b>	
DO NOT SCALE DRAWING	
TITLE: <b>LOAD CENTER/ATS ASM</b>	
SHEET 3	PART NO. <b>185668</b> REV

FOR ELECTRICAL TORQUE SPECIFICATIONS SEE DWG NO. 128783-01-000

FOR ELECTRICAL CALLOUTS SEE DWG NO. 121339-01-000

- NOTES:
1. ALL GROUND WIRES TO BE COVERED WITH TUBING 8041-02-000.
  2. REMOVE 400MM FROM OUTER JACKET ON ALL WIRES ENTERING LOAD CENTER AND TRIM INDIVIDUAL CONDUCTORS AS REQUIRED TO MAKE INTERNAL CONNECTIONS
  3. TRANSFORMER NEUTRAL TO MAIN NEUTRAL BAR, GROUND TO GROUND BAR, AND HOT (BLK) TO L1 SCREW ON EMS BOARD.
  4. BLACKEN OUT FIREPLACE WITH OPTION 14A

\* 185668 A \*



DETAIL DA

- (32W) GENERATOR-START,AUTO SYSTEM
- (53K) WTR HTR-10GAL/ELECTRIC/LPGAS
- (265) CODES/STANDARDS-CSA/CMVSS
- (1B1) CODES/STANDARDS USA

FIRST USED	
<b>14 L-SERIES</b>	
DO NOT SCALE DRAWING	
TITLE: <b>LOAD CENTER/ATS ASM</b>	
SHEET 4	PART NO. <b>185668</b> REV
1 11-Feb-2015	

FOR ELECTRICAL TORQUE SPECIFICATIONS SEE DWG NO. 128783-01-000

FOR ELECTRICAL CALLOUTS SEE DWG NO. 121339-01-000

\* 185668 A \*