



**DANGER**

**Danger of electrical shock, burns or death.** Always remove all power sources before attempting any repair, service or diagnostic work. Power can be present from shore power, generator, inverter or battery. All power sources must be disabled and secured before performing any service.



**CAUTION**

If you lack the skills, tools or equipment to perform diagnostic or repair work leave such work to an authorized Winnebago Industries dealer or other qualified shop.

8	
DRAWING NO.	MODELS
185633-01	L34T
185633-02	L38R

1	REV/DATE	DWG NO	185633
RELEASE	A		
REV ZONE	REVISION RECORD	DATE	DTR-ORIG

	L34T	L38R
CABLE ASM (YEL) FROM COACH BATTERY FUSE TO COACH SIDE OF AUX START SOLENOID	175207-52-039	175207-52-039
CABLE ASM (ORG) FROM COACH BATTERY TO INVERTER FUSE	175207-62-003	175207-62-003
CABLE ASM (ORG) FROM INVERTER FUSE TO INVERTER DISCONNECT	175207-62-012	175207-62-012
CABLE ASM (ORG) FROM INVERTER DISCONNECT TO INVERTER POSITIVE TERMINAL	175207-62-005	175207-62-005
CABLE ASM (BLK) FROM BATTERY TO INVERTER NEGATIVE TERMINAL	175211-01-018	175211-01-018
CABLE ASM (BLK) FROM COACH BATTERY TO FRAME RAIL GROUND	175211-02-030	175211-02-030
CABLE ASM (PUR) FROM CHASSIS BATTERY DISCONNECT TO CHASSIS ISOLATED STUD	175207-15-004	175207-15-004
CABLE ASM (BLU) FROM CHASSIS ISOLATED STUD TO LEVELING SYSTEM PUMP	141416-26-084	141416-26-119
CABLE ASM (BLK) FROM LEVELING SYSTEM TO FRAME RAIL GROUND	133567-11-009	133567-11-005
CABLE ASM (GRN) FROM COACH BAT DISC RELAY FUSE TO PASS THRU STUD IN FRONT LEFT COMPT	175207-42-107	175207-42-122
CABLE ASM (GRN) FROM PASS THRU STUD IN FRONT LEFT COMPT TO GENERATOR	175207-42-024	175207-42-024
CABLE ASM (BLK) FROM GENERATOR TO FRAME RAIL GROUND BOLT	175211-02-013	175211-02-013
CABLE ASM (YEL) JUMPER BETWEEN POSITIVE POSTS ON COACH BATTERY	141417-51-002 (3)	141417-51-002 (3)
CABLE ASM (BLK) JUMPER BETWEEN NEGATIVE POSTS ON COACH BATTERY	133568-11-002 (3)	133568-11-002 (3)
CABLE ASM (RED) JUMPER BETWEEN POSITIVE POSTS IN LEFT FRONT COMPT	141417-32-002	141417-32-002
CABLE ASM-TEMPERATURE,BATTERY	175385-03-000	175385-03-000
CABLE ASM (RED) FROM CHASSIS BATTERY FUSE TO CHASSIS SIDE OF AUX START SOLENOID	175207-35-006	175207-35-006
CABLE ASM (RED) FROM CHASSIS BATTERY TO CHASSIS BATTERY FUSE	175207-35-005	175207-35-005
CABLE ASM (YEL) FROM COACH BATTERY TO COACH BATTERY FUSE	175207-52-003	175207-52-003

265 CODES/STANDARDS-CSA/CMVSS  
 1B1 CODES/STANDARDS USA

1B1 265



DTR	ORIG. DATE
CHKR	ALL DIMENSIONS ARE IN MILLIMETERS
P.E.	
M.E.	FIRST USED
DSNR	14 L-SERIES
UNSPECIFIED TOLERANCES ARE:	
WHOLE DIM (X)	: 3
ONE-PLACE (X.X)	: 1.5
TWO-PLACE (X.XX)	: 0.50
ANGLE	: 1°
THIRD ANGLE PROJECTION	
DO NOT SCALE DRAWING	REFER TO ES0018 FOR FASTENER TIGHTENING GUIDELINES
TITLE: BATTERY INSTL	

FOR ELECTRICAL TORQUE SPECIFICATIONS SEE DWG NO. 128783-01-000

FOR ELECTRICAL CALLOUTS SEE DWG NO. 121339-01-000

SHEET 1 OF 4	PART NO 185633	REV
REF:	1	01-May-2014

\* 185633 \* A

CABLE ASM (GRN)  
FROM COACH BAT DISC  
RELAY TO PASS THRU STUD

GENERATOR  
(REF)

CABLE ASM (BLK)  
GENERATOR GROUND  
FROM GENERATOR GROUND STUD  
TO LEVEL SYSTEM GROUND STUD

CABLE ASM (GRN)  
GENERATOR FROM PASS  
THRU STUD TO GENERATOR

CABLE ASM (RED)  
JUMPER BETWEEN  
POSITIVE POSTS

CABLE ASM (BLU)  
FROM ISOLATED STUD  
IN REAR CHASSIS BREAKER PANEL  
TO LEVEL SYSTEM PUMP  
(L34T SHOWN  
SEE DETAIL BA FOR L38R)

TO INVERTER

CA

TO CHASSIS  
FUSE BLOCK

DA

CABLE ASM (BLU)  
FROM ISOLATED STUD  
IN REAR CHASSIS  
BREAKER PANEL TO  
LEVEL SYSTEM PUMP

DETAIL BA  
(L38R)

265 CODES/STANDARDS-CSA/CMVSS

1B1 CODES/STANDARDS USA

1B1 265

FIRST USED  
**14 L-SERIES**

DO NOT SCALE DRAWING

TITLE:  
**BATTERY INSTL**

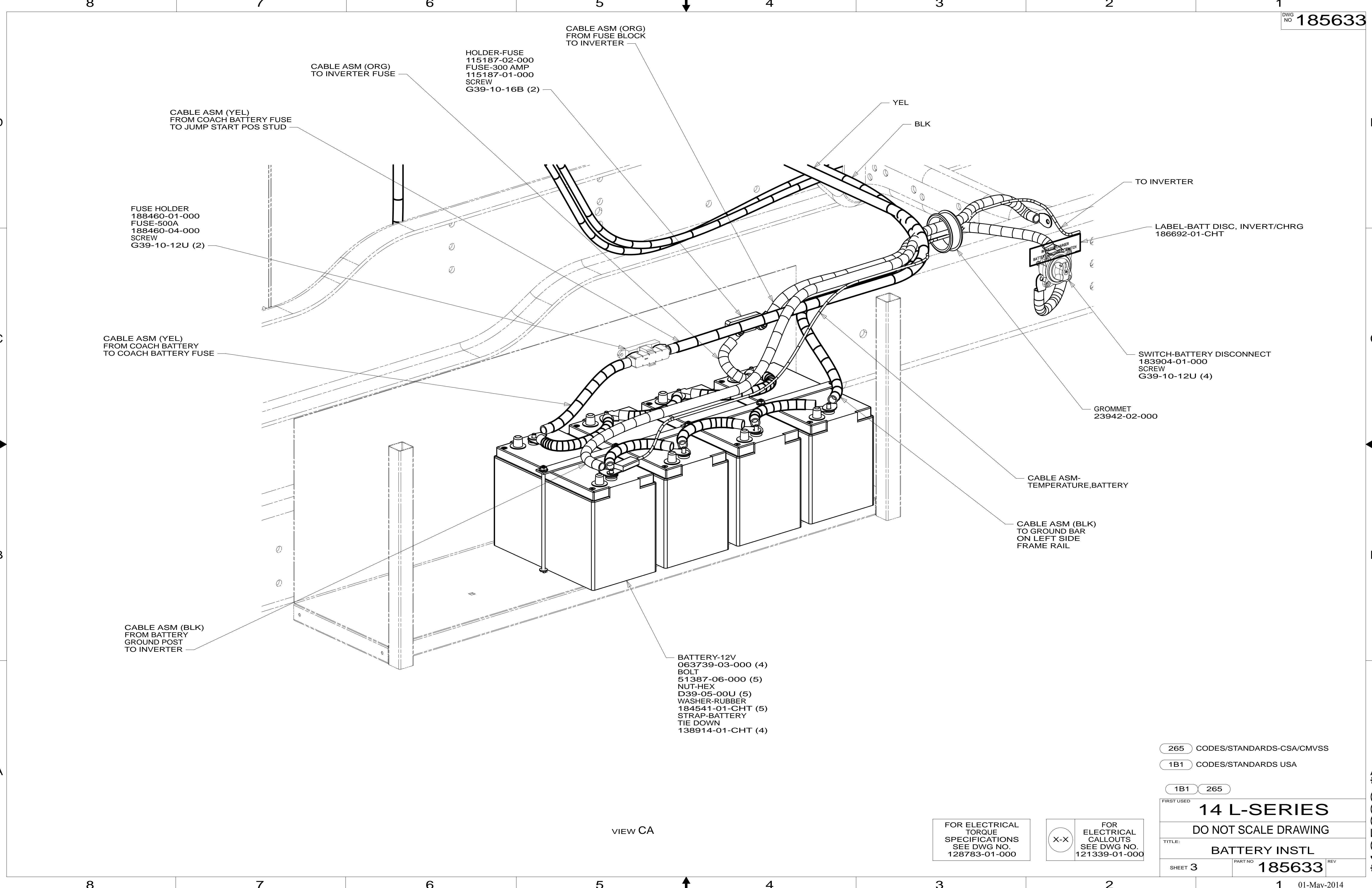
SHEET 2 PART NO **185633** REV

01-May-2014

FOR ELECTRICAL  
TORQUE  
SPECIFICATIONS  
SEE DWG NO.  
128783-01-000

X-X  
FOR  
ELECTRICAL  
CALLOUTS  
SEE DWG NO.  
121339-01-000

\* 185633 \*



FUSE HOLDER  
188460-01-000  
FUSE-500A  
188460-04-000  
SCREW  
G39-10-12U (2)

CABLE ASM (YEL)  
FROM COACH BATTERY FUSE  
TO JUMP START POS STUD

CABLE ASM (ORG)  
TO INVERTER FUSE

HOLDER-FUSE  
115187-02-000  
FUSE-300 AMP  
115187-01-000  
SCREW  
G39-10-16B (2)

CABLE ASM (ORG)  
FROM FUSE BLOCK  
TO INVERTER

YEL

BLK

TO INVERTER

LABEL-BATT DISC, INVERT/CHRG  
186692-01-CHT

SWITCH-BATTERY DISCONNECT  
183904-01-000  
SCREW  
G39-10-12U (4)

GROMMET  
23942-02-000

CABLE ASM-  
TEMPERATURE,BATTERY

CABLE ASM (BLK)  
TO GROUND BAR  
ON LEFT SIDE  
FRAME RAIL

CABLE ASM (YEL)  
FROM COACH BATTERY  
TO COACH BATTERY FUSE

CABLE ASM (BLK)  
FROM BATTERY  
GROUND POST  
TO INVERTER

BATTERY-12V  
063739-03-000 (4)  
BOLT  
51387-06-000 (5)  
NUT-HEX  
D39-05-00U (5)  
WASHER-RUBBER  
184541-01-CHT (5)  
STRAP-BATTERY  
TIE DOWN  
138914-01-CHT (4)

VIEW CA

265 CODES/STANDARDS-CSA/CMVSS

1B1 CODES/STANDARDS USA

1B1 265

FIRST USED  
**14 L-SERIES**

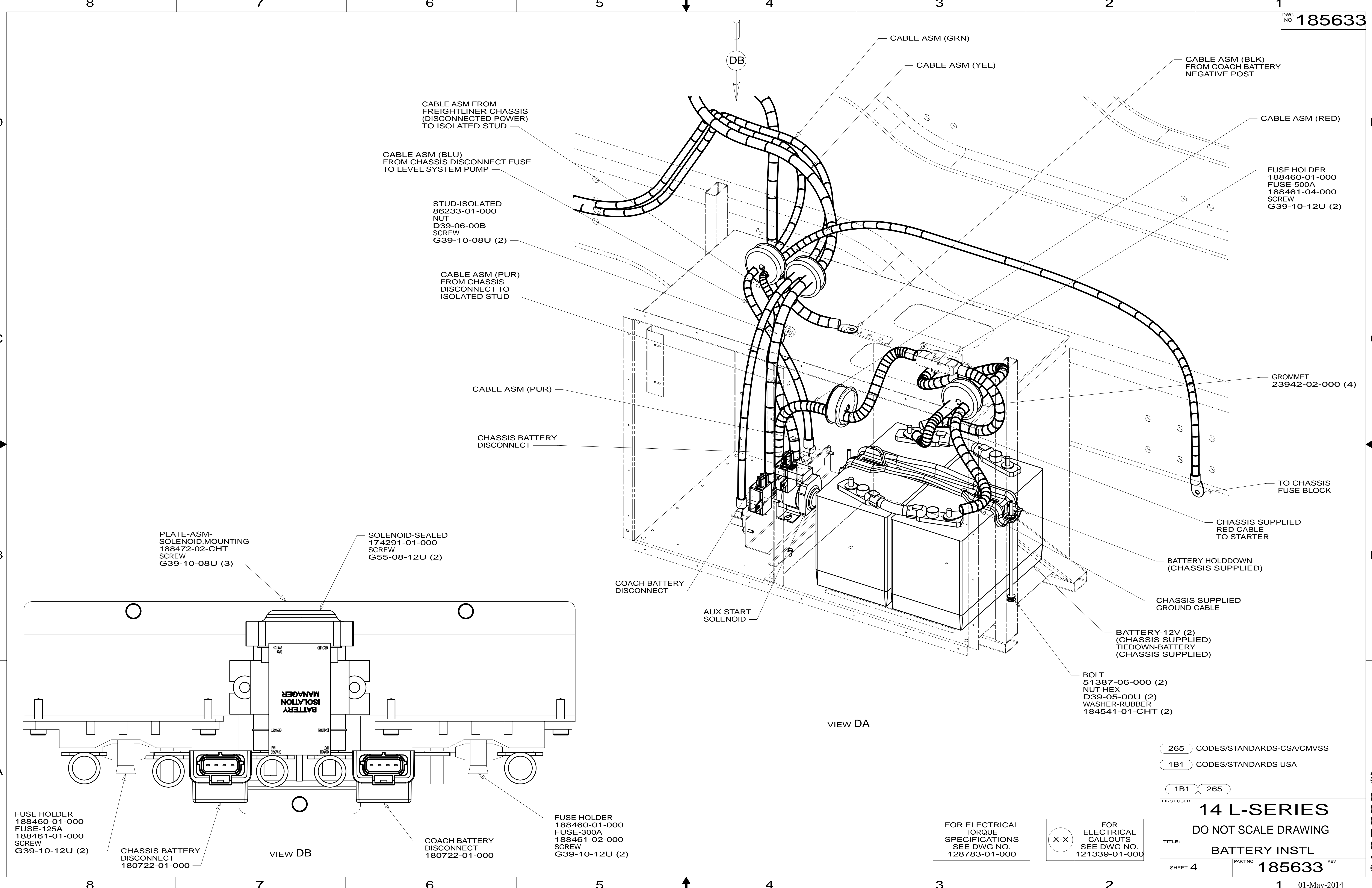
DO NOT SCALE DRAWING

TITLE:  
**BATTERY INSTL**

SHEET 3 PART NO **185633** REV

FOR ELECTRICAL  
TORQUE  
SPECIFICATIONS  
SEE DWG NO.  
128783-01-000

X-X  
FOR  
ELECTRICAL  
CALLOUTS  
SEE DWG NO.  
121339-01-000



CABLE ASM FROM FREIGHTLINER CHASSIS (DISCONNECTED POWER) TO ISOLATED STUD

CABLE ASM (BLU) FROM CHASSIS DISCONNECT FUSE TO LEVEL SYSTEM PUMP

STUD-ISOLATED 86233-01-000 NUT D39-06-00B SCREW G39-10-08U (2)

CABLE ASM (PUR) FROM CHASSIS DISCONNECT TO ISOLATED STUD

CABLE ASM (PUR)

CHASSIS BATTERY DISCONNECT

COACH BATTERY DISCONNECT

AUX START SOLENOID

CABLE ASM (GRN)

CABLE ASM (YEL)

CABLE ASM (BLK) FROM COACH BATTERY NEGATIVE POST

CABLE ASM (RED)

FUSE HOLDER 188460-01-000 FUSE-500A 188461-04-000 SCREW G39-10-12U (2)

GROMMET 23942-02-000 (4)

TO CHASSIS FUSE BLOCK

CHASSIS SUPPLIED RED CABLE TO STARTER

BATTERY HOLDDOWN (CHASSIS SUPPLIED)

CHASSIS SUPPLIED GROUND CABLE

BATTERY-12V (2) (CHASSIS SUPPLIED) TIEDOWN-BATTERY (CHASSIS SUPPLIED)

BOLT 51387-06-000 (2) NUT-HEX D39-05-00U (2) WASHER-RUBBER 184541-01-CHT (2)

PLATE-ASM-SOLENOID, MOUNTING 188472-02-CHT SCREW G39-10-08U (3)

SOLENOID-SEALED 174291-01-000 SCREW G55-08-12U (2)

FUSE HOLDER 188460-01-000 FUSE-125A 188461-01-000 SCREW G39-10-12U (2)

CHASSIS BATTERY DISCONNECT 180722-01-000

VIEW DB

COACH BATTERY DISCONNECT 180722-01-000

FUSE HOLDER 188460-01-000 FUSE-300A 188461-02-000 SCREW G39-10-12U (2)

FOR ELECTRICAL TORQUE SPECIFICATIONS SEE DWG NO. 128783-01-000

FOR ELECTRICAL CALLOUTS SEE DWG NO. 121339-01-000

265 CODES/STANDARDS-CSA/CMVSS

1B1 CODES/STANDARDS USA

1B1 265

FIRST USED 14 L-SERIES

DO NOT SCALE DRAWING

TITLE: BATTERY INSTL

SHEET 4 PART NO 185633 REV