



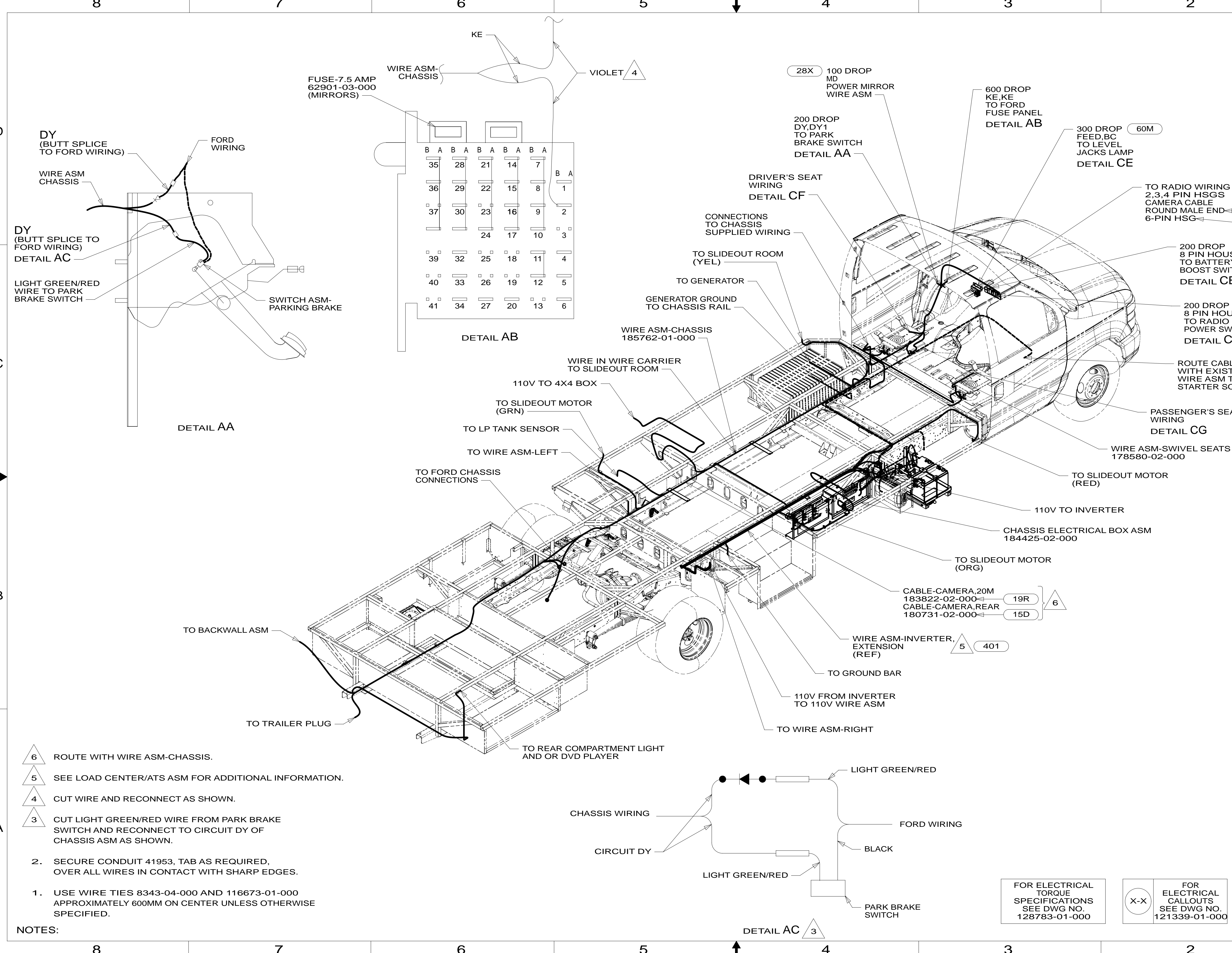
**DANGER**

**Danger of electrical shock, burns or death.** Always remove all power sources before attempting any repair, service or diagnostic work. Power can be present from shore power, generator, inverter or battery. All power sources must be disabled and secured before performing any service.



**CAUTION**

If you lack the skills, tools or equipment to perform diagnostic or repair work leave such work to an authorized Winnebago Industries dealer or other qualified shop.



- 15D INFOTAINMENT CENTER/GPS
- 19R RADIO/REARVIEW MONITOR SYS
- 401 INVERTER-DC/AC, 1000 WATT
- 965 SEAT PEDESTALS-SWIVEL/SLIDE
- 60M HYDRAULIC LEVEL JACKS-AUTO
- 28X MIRRORS-EXTERIOR W/DEFROST
- 16Y FORD CHASSIS - 14,500#
- 265 CODES/STANDARDS-CSA/CMVSS
- 1B1 CODES/STANDARDS USA

1B1 265 16Y

**WINNEBAGO** COPYRIGHT 2013 WINNEBAGO INDUSTRIES, INC.

DFTR	ORIG. DATE
CHKR	ALL DIMENSIONS ARE IN MILLIMETERS
P.E.	FIRST USED
M.E.	14 730J
DSNR	

UNSPECIFIED TOLERANCES ARE:  
 WHOLE DIM (X) : 3  
 ONE-PLACE (X.X) : 1.5  
 TWO-PLACE (X.XX) : 0.50  
 ANGLE : 1°

THIRD ANGLE PROJECTION

DO NOT SCALE DRAWING REFER TO ES0018 FOR FASTENER TIGHTENING GUIDELINES

TITLE: **WIRING INSTL-CHASSIS**

SHEET 1 OF 4 PART NO 185565 REV

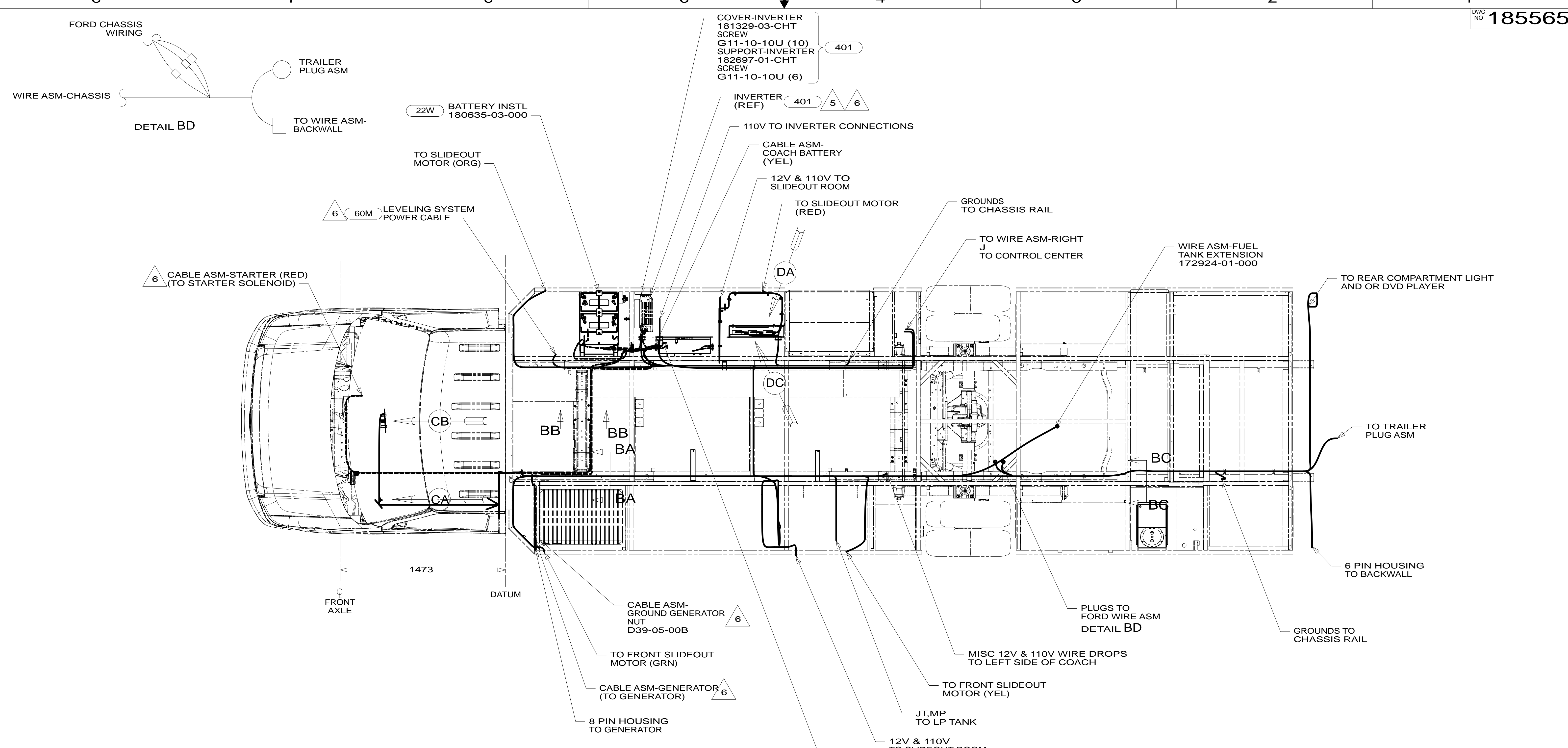
REF: 1 21-Nov-2013

- NOTES:**
1. USE WIRE TIES 8343-04-000 AND 116673-01-000 APPROXIMATELY 600MM ON CENTER UNLESS OTHERWISE SPECIFIED.
  2. SECURE CONDUIT 41953, TAB AS REQUIRED, OVER ALL WIRES IN CONTACT WITH SHARP EDGES.
- 6 ROUTE WITH WIRE ASM-CHASSIS.  
 5 SEE LOAD CENTER/ATS ASM FOR ADDITIONAL INFORMATION.  
 4 CUT WIRE AND RECONNECT AS SHOWN.  
 3 CUT LIGHT GREEN/RED WIRE FROM PARK BRAKE SWITCH AND RECONNECT TO CIRCUIT DY OF CHASSIS ASM AS SHOWN.

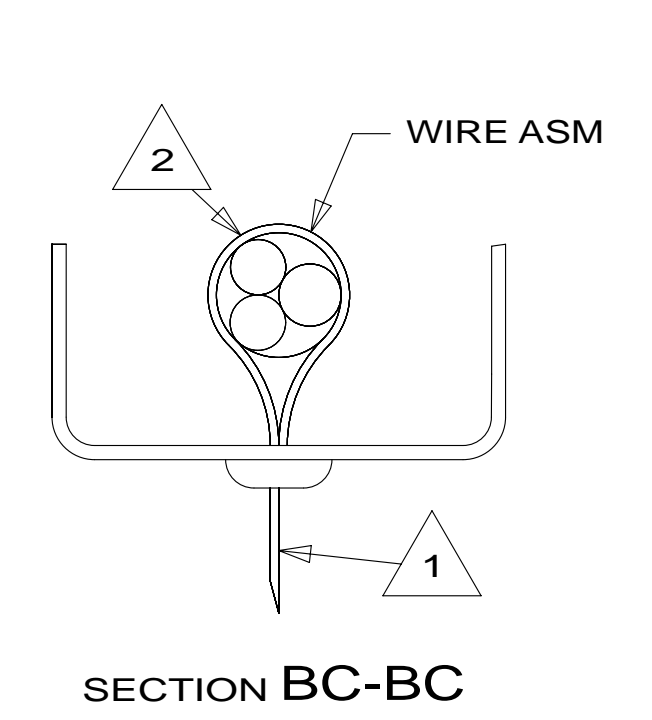
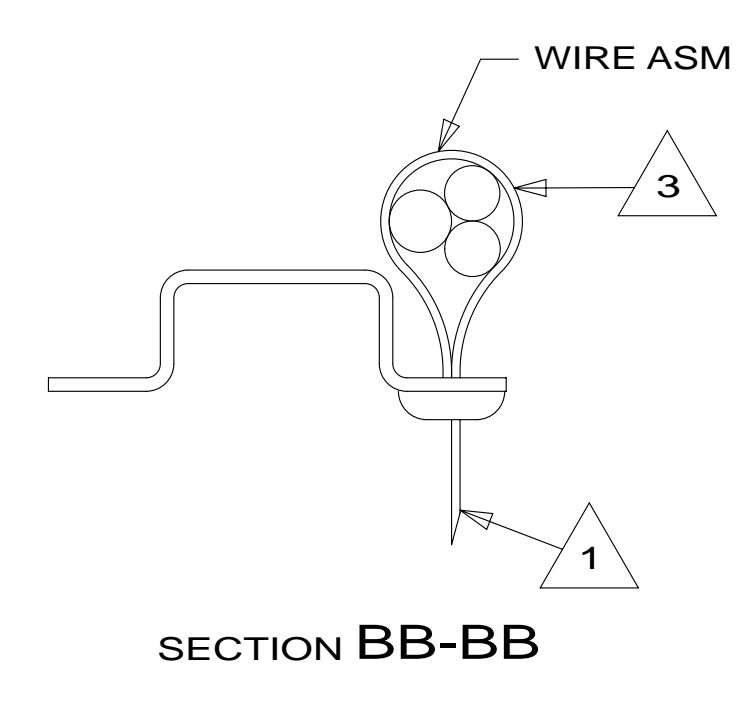
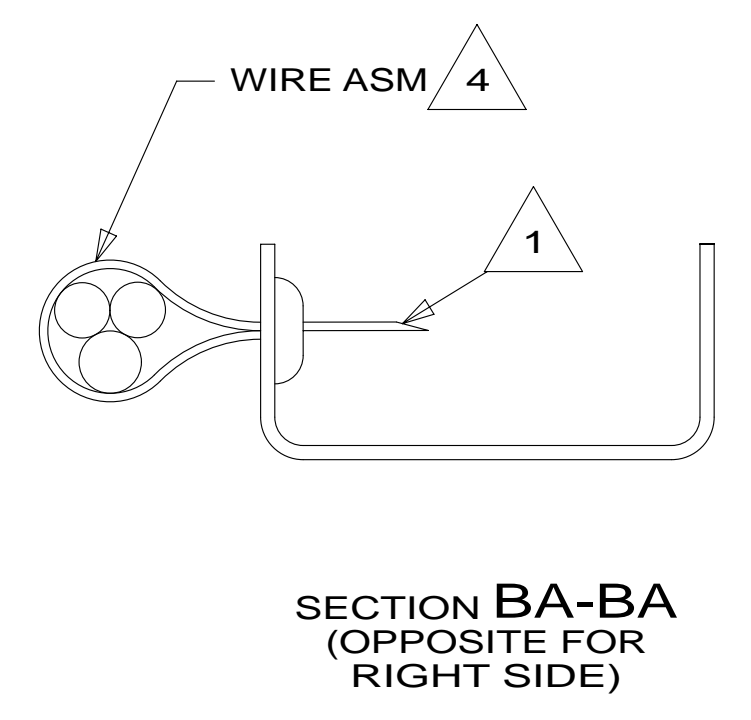
FOR ELECTRICAL TORQUE SPECIFICATIONS SEE DWG NO. 128783-01-000

FOR ELECTRICAL CALLOUTS SEE DWG NO. 121339-01-000

\* 185565 \*



- NOTES:
- 6 SEE BATTERY INSTL FOR ADDITIONAL INFORMATION.
  - 5 SEE LOAD CENTER/ATS ASM FOR ADDITIONAL INFORMATION.
  - 4 WIRES TO BE TIED TO CROSS MEMBER USING EXISTING HOLES.
  - 3 WIRES TO BE TIED TO TOP OF RAIL USING EXISTING HOLES.
  - 2 WIRES TO BE TIED TO INSIDE OF RAIL USING EXISTING HOLES.
  - 1 CUT OFF EXCESS END OF WIRE TIE.



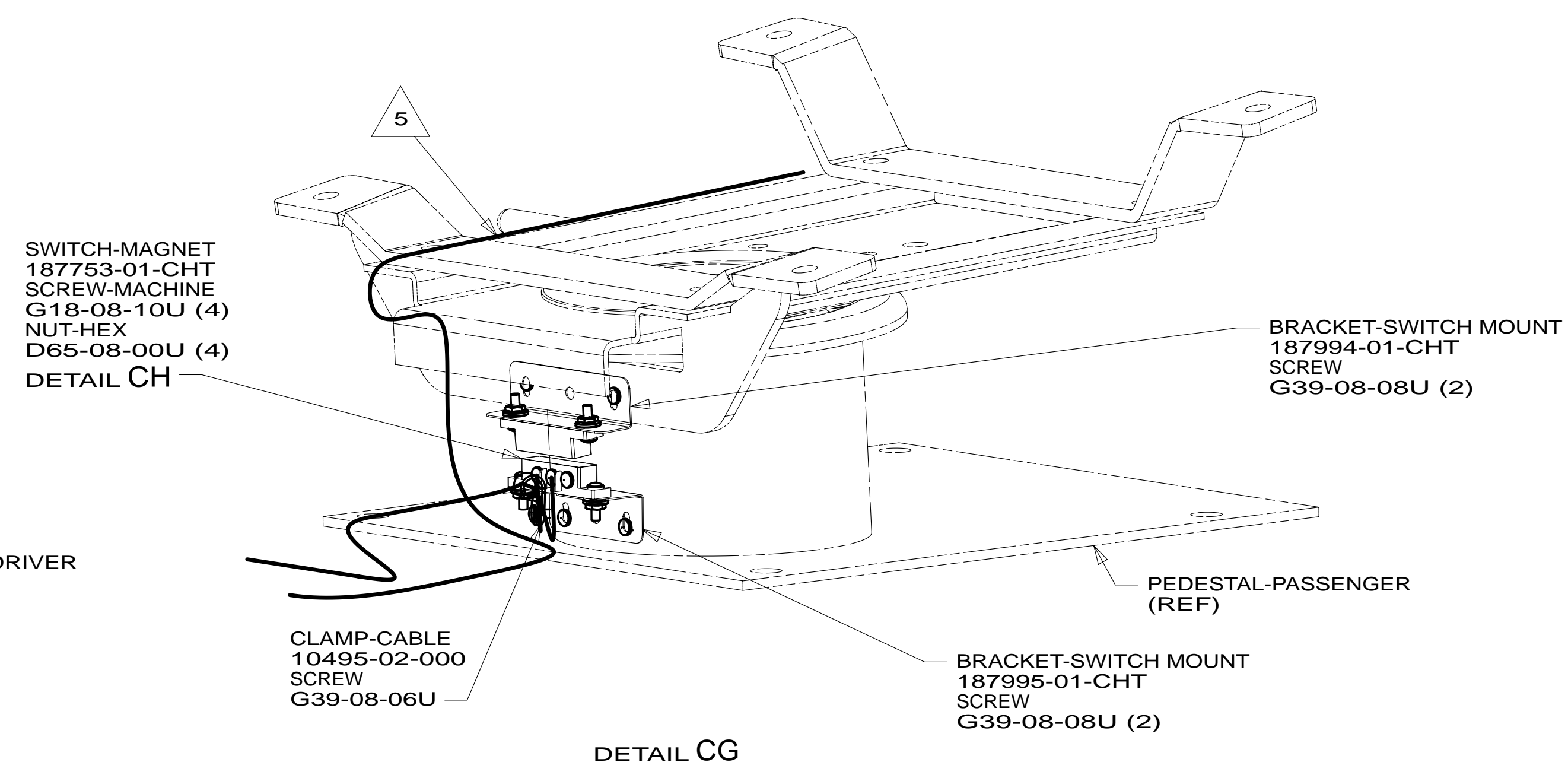
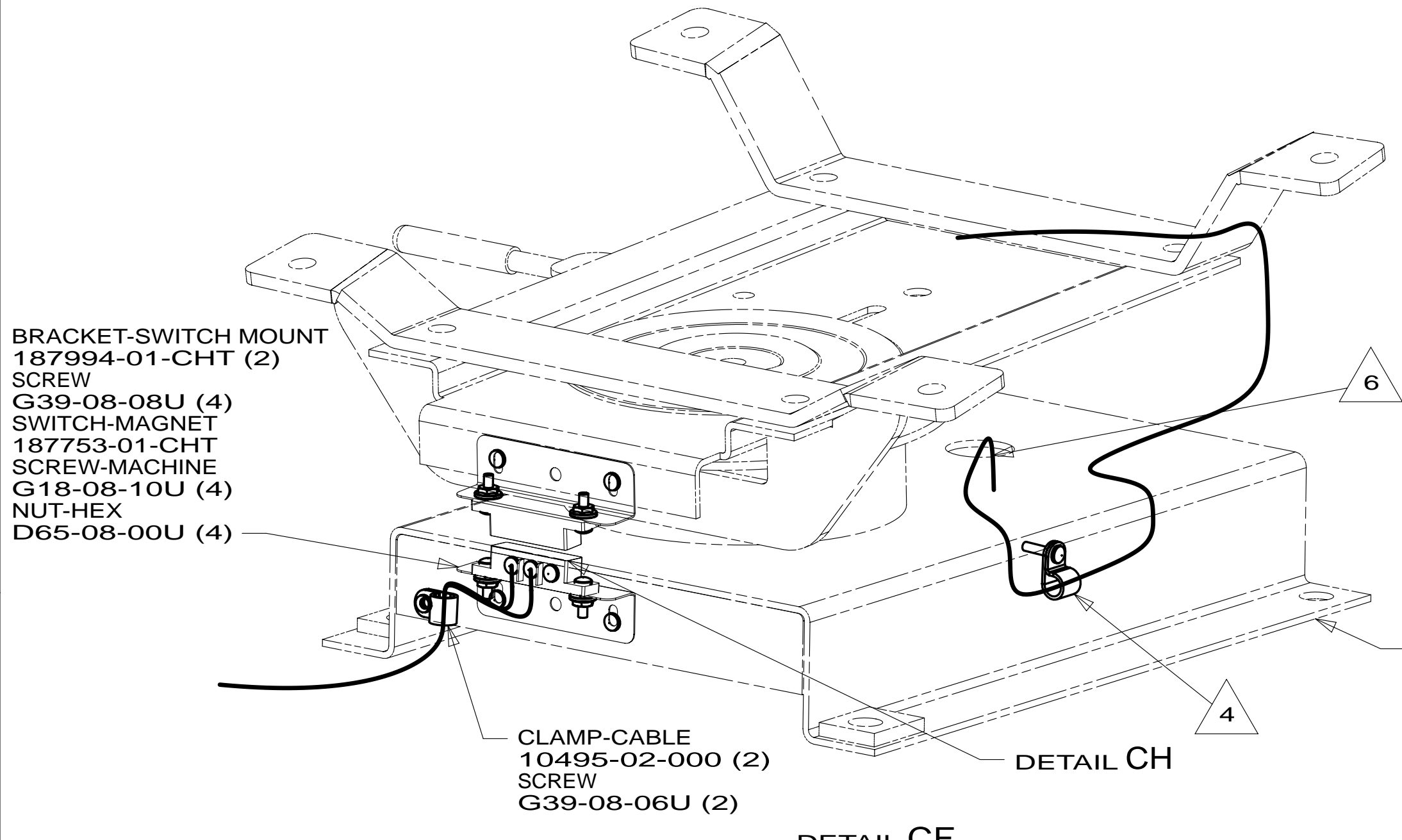
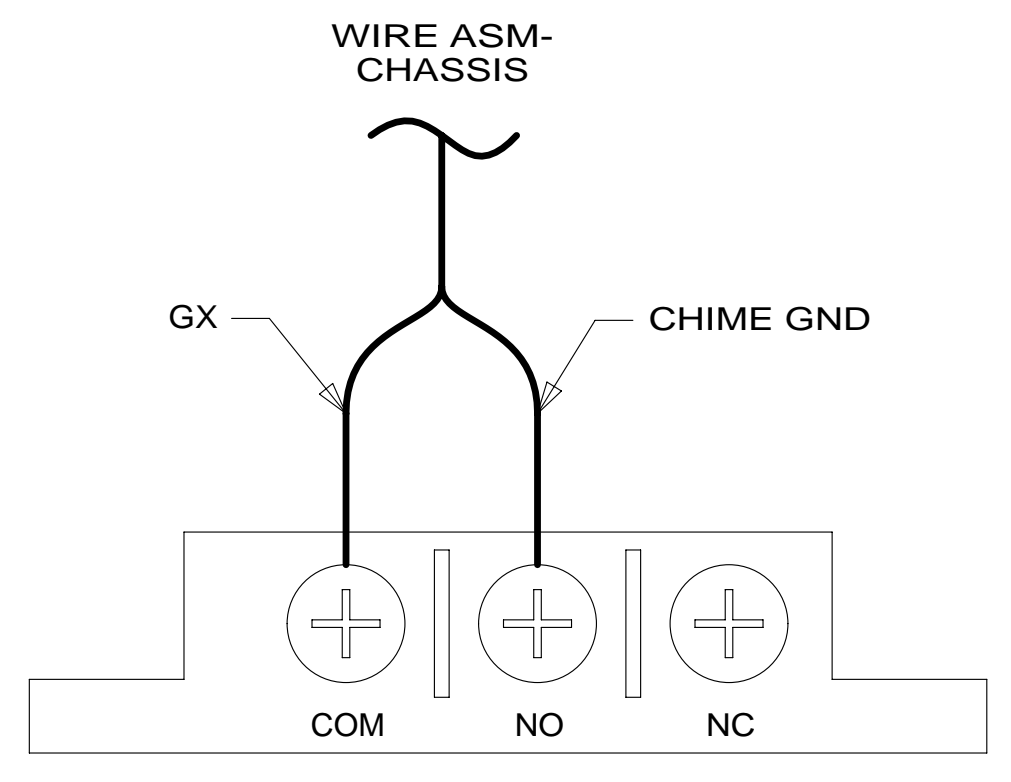
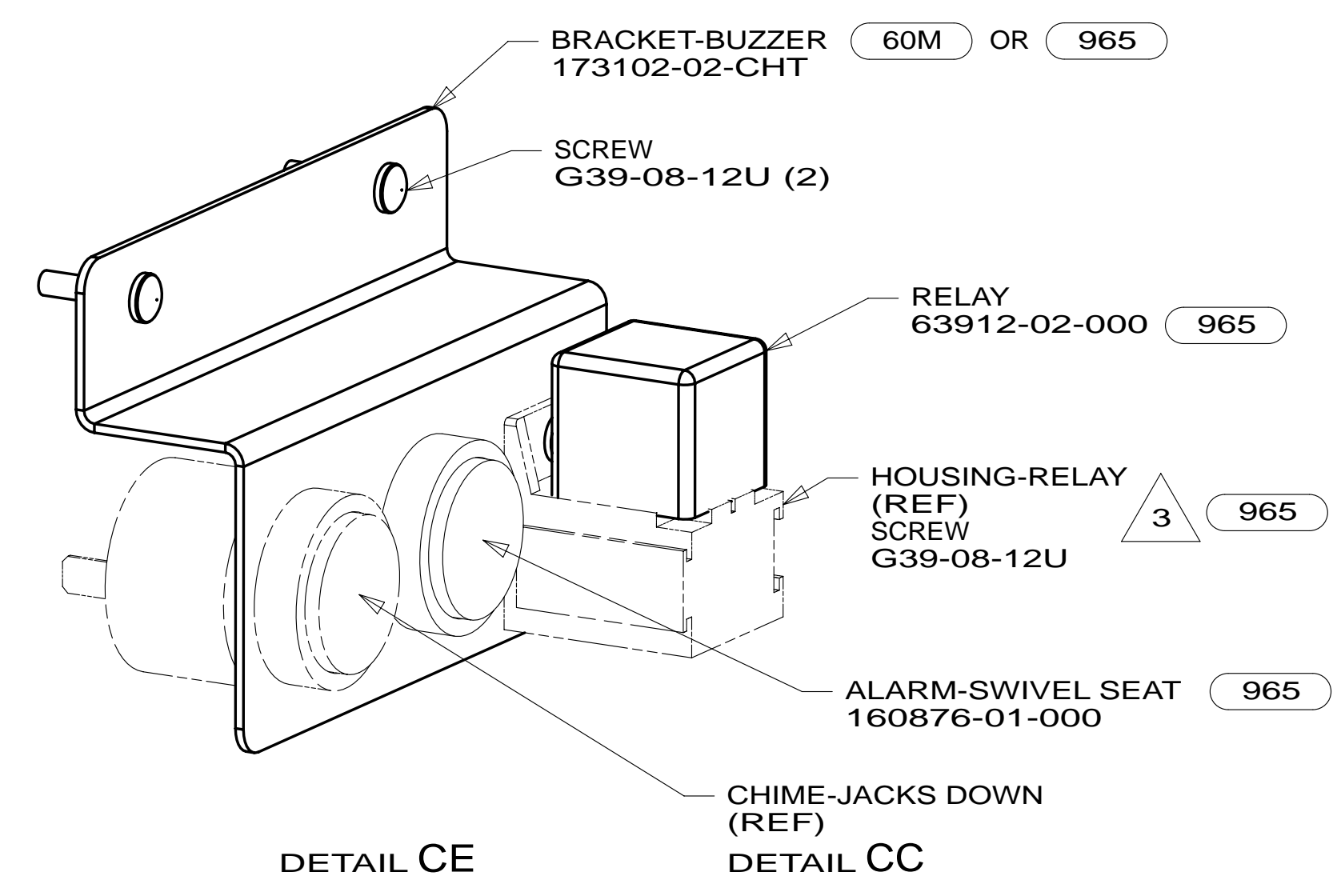
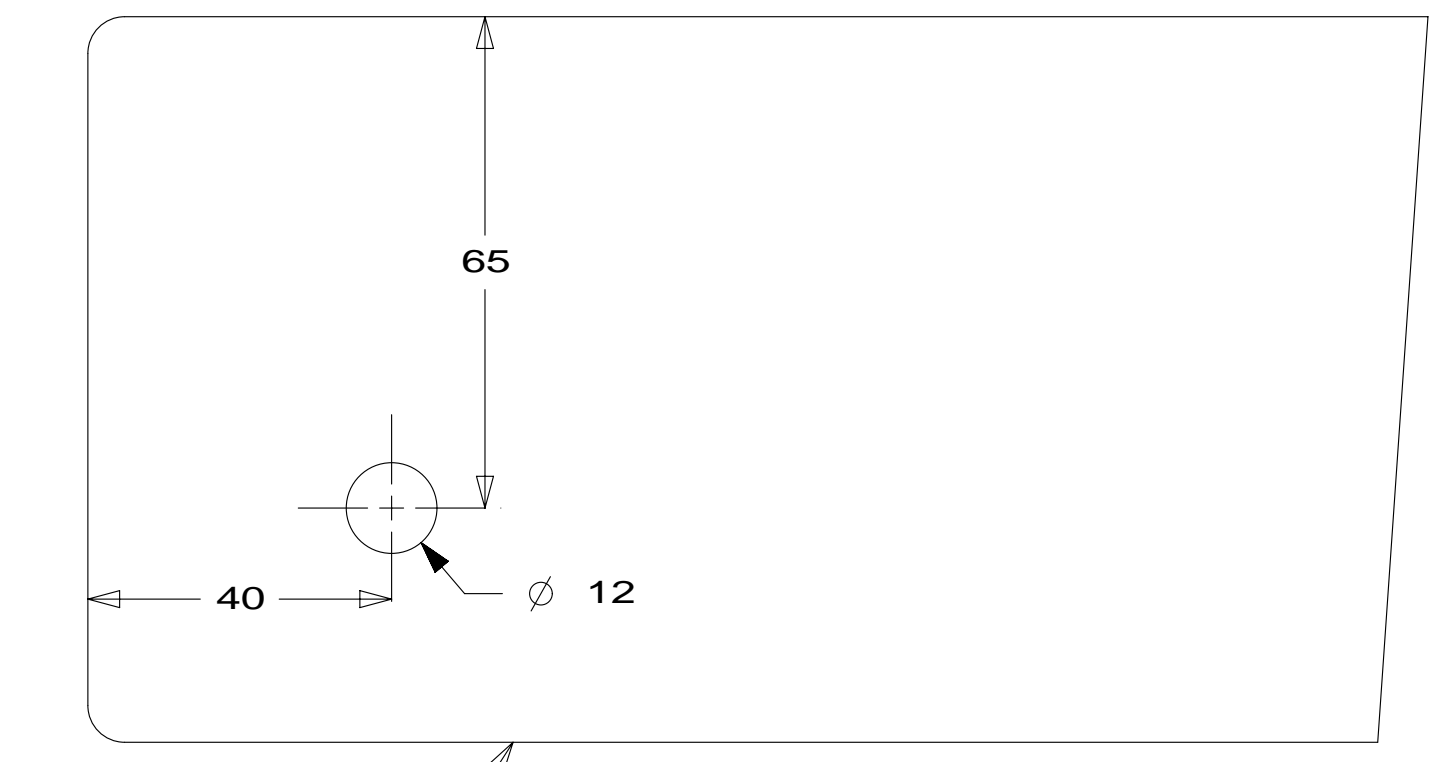
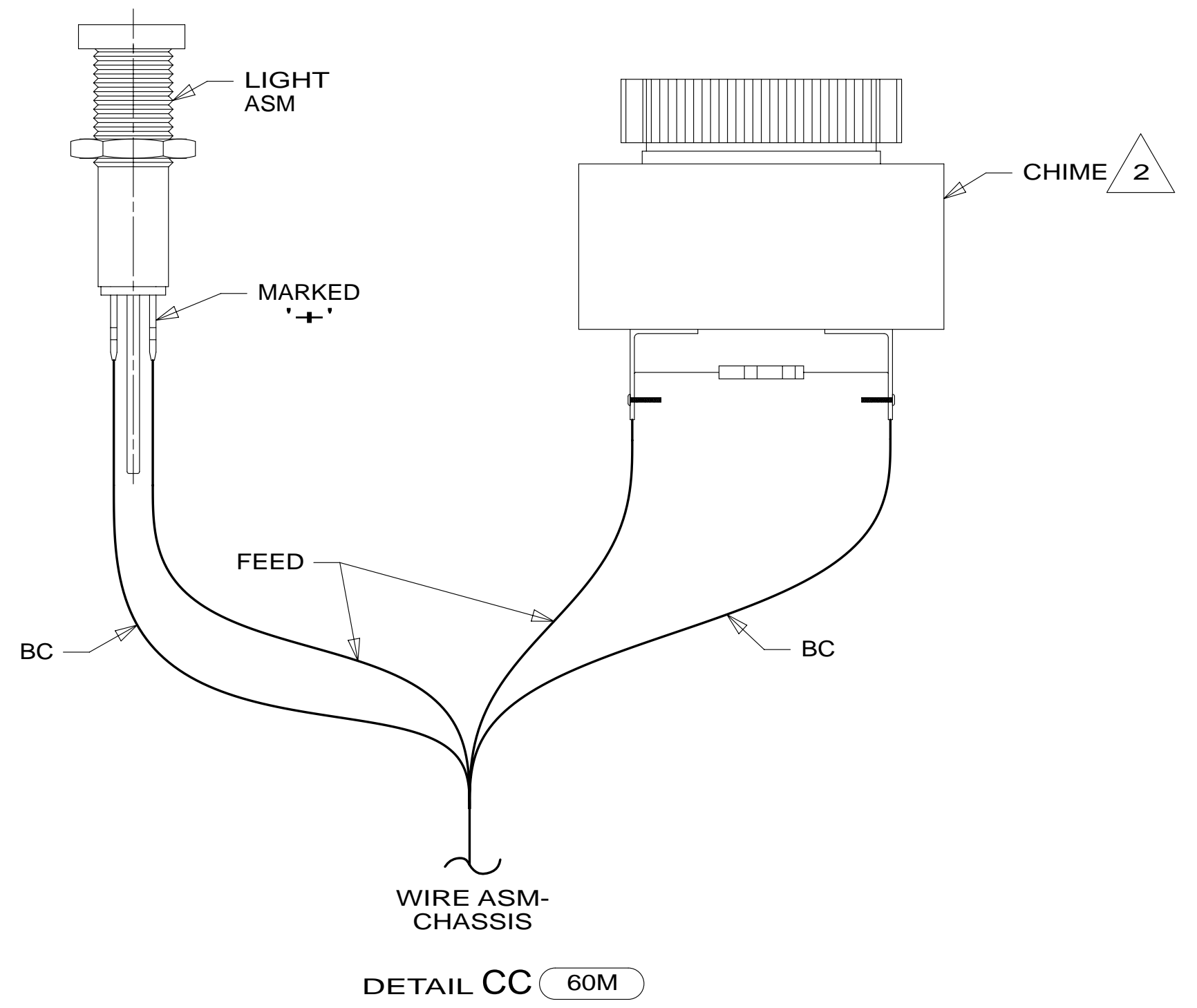
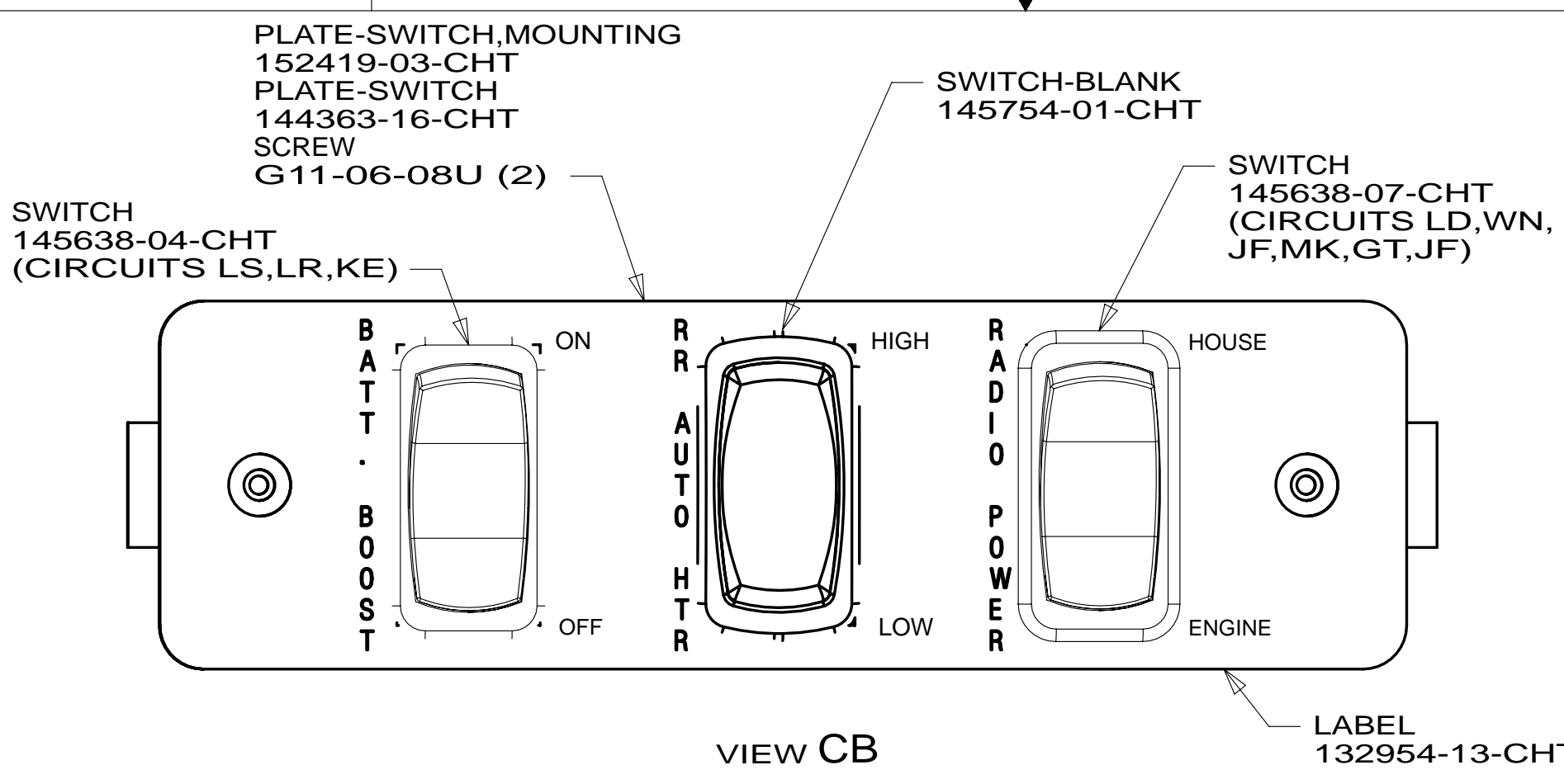
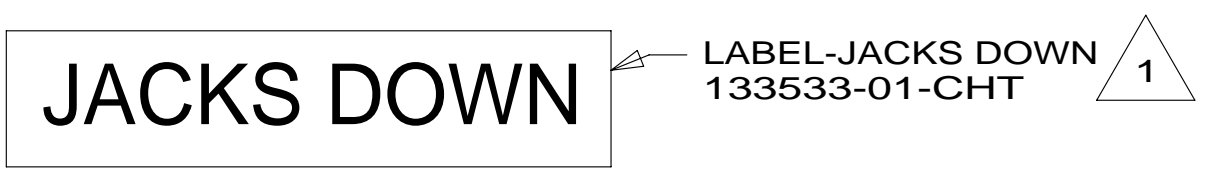
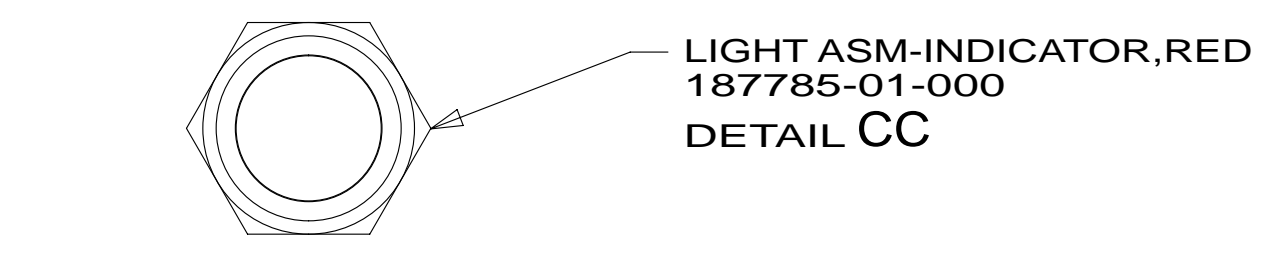
FOR ELECTRICAL TORQUE SPECIFICATIONS SEE DWG NO. 128783-01-000

FOR ELECTRICAL CALLOUTS SEE DWG NO. 121339-01-000

- 40A INVERTER-DC/AC WITHOUT
- 401 INVERTER-DC/AC, 1000 WATT
- 60M HYDRAULIC LEVEL JACKS-AUTO
- 22W BATTERY-SECOND
- 16Y FORD CHASSIS - 14,500#
- 265 CODES/STANDARDS-CSA/CMVSS
- 1B1 CODES/STANDARDS USA

FIRST USED	14 730J	
DO NOT SCALE DRAWING		
TITLE: WIRING INSTL-CHASSIS		
SHEET 2	PART NO 185565	REV
21-Nov-2013		

\* 185565 \* A



- 965 SEAT PEDESTALS-SWIVEL/SLIDE
- 60M HYDRAULIC LEVEL JACKS-AUTO
- 16Y FORD CHASSIS - 14,500#
- 265 CODES/STANDARDS-CSA/CMVSS
- 1B1 CODES/STANDARDS USA

- NOTES:
- 5 ATTACH WIRE TIE 116673-01-000 TO FORD SEAT WIRING.
  - 4 INSTALL CLAMP FOR FORD SEAT WIRING.
  - 3 PART OF WIRE ASM-CHASSIS.
  - 2 SUPPLIED WITH LEVELING SYSTEM.
  - 1 FOR HOLE SIZE AND LOCATION SEE DETAIL CD.

6 COVER WIRING WITH CONVOLUTE 41953-01-000 (150 MM) TO PROTECT WIRES FROM SHARP EDGES WHERE THEY PASS THROUGH SEAT PEDESTAL. SECURE BOTH ENDS TO WIRES WITH TAPE 8363-01-000.

FOR ELECTRICAL TORQUE SPECIFICATIONS SEE DWG NO. 128783-01-000

FOR ELECTRICAL CALLOUTS SEE DWG NO. 121339-01-000

FIRST USED

**14 730J**

DO NOT SCALE DRAWING

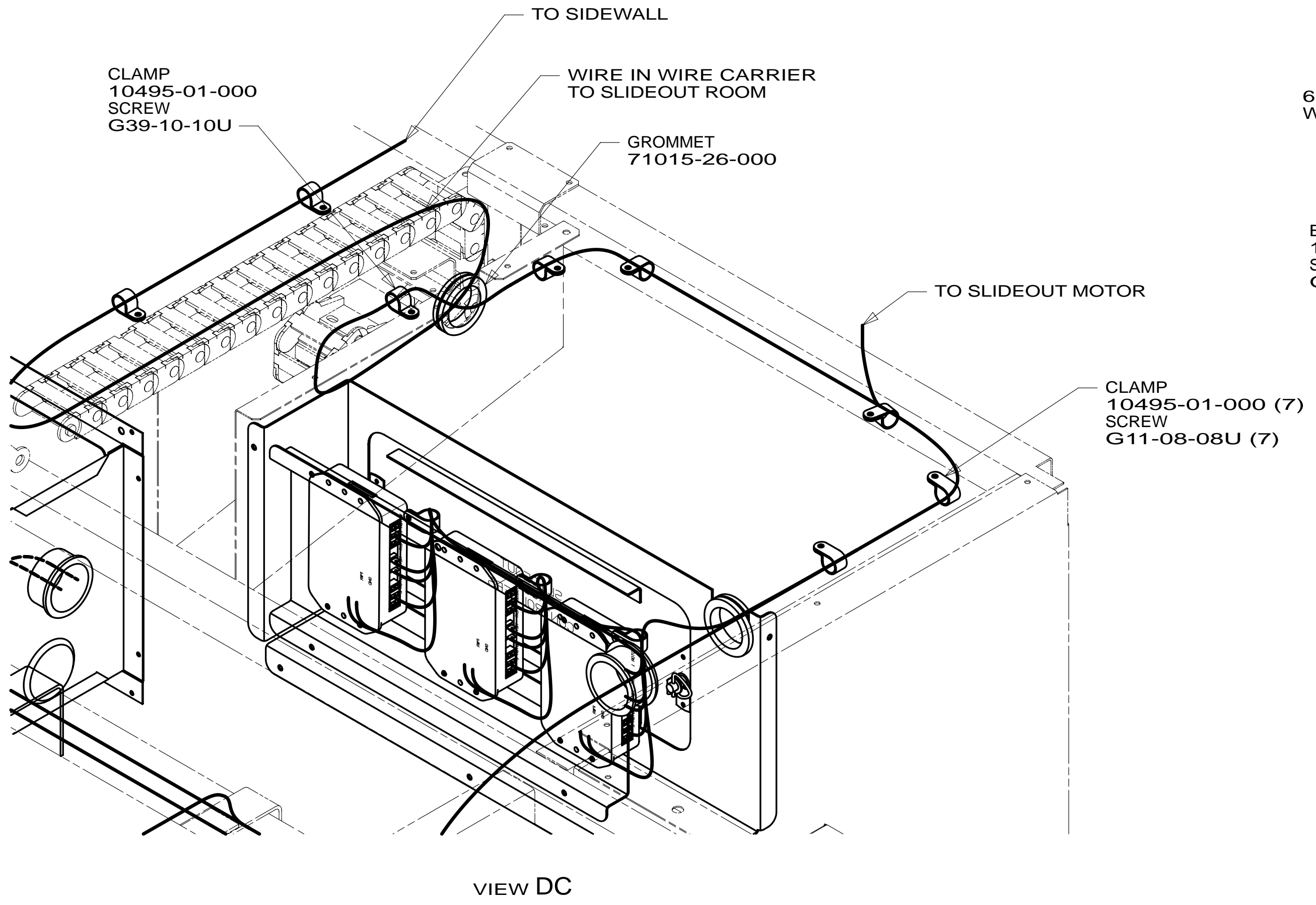
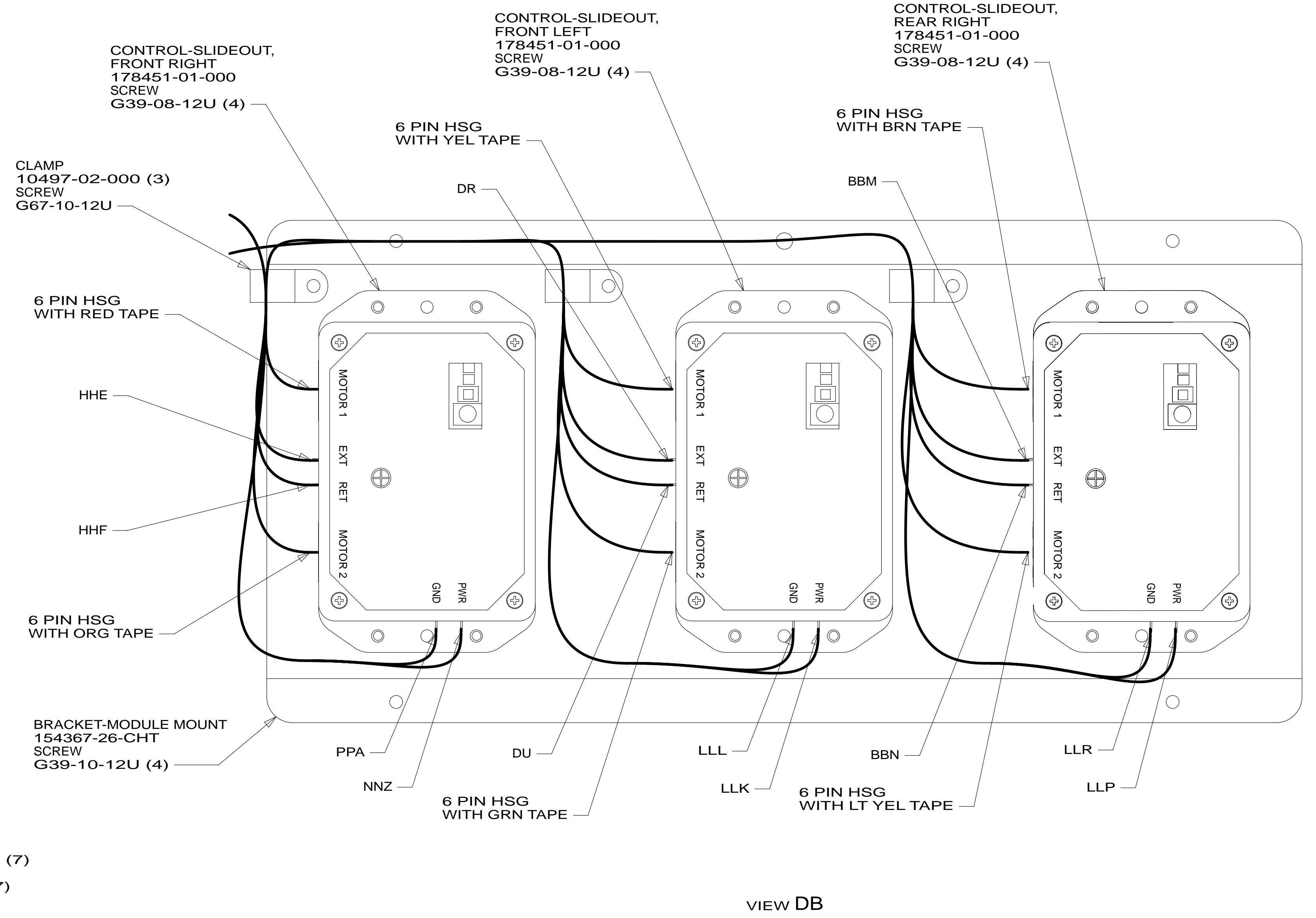
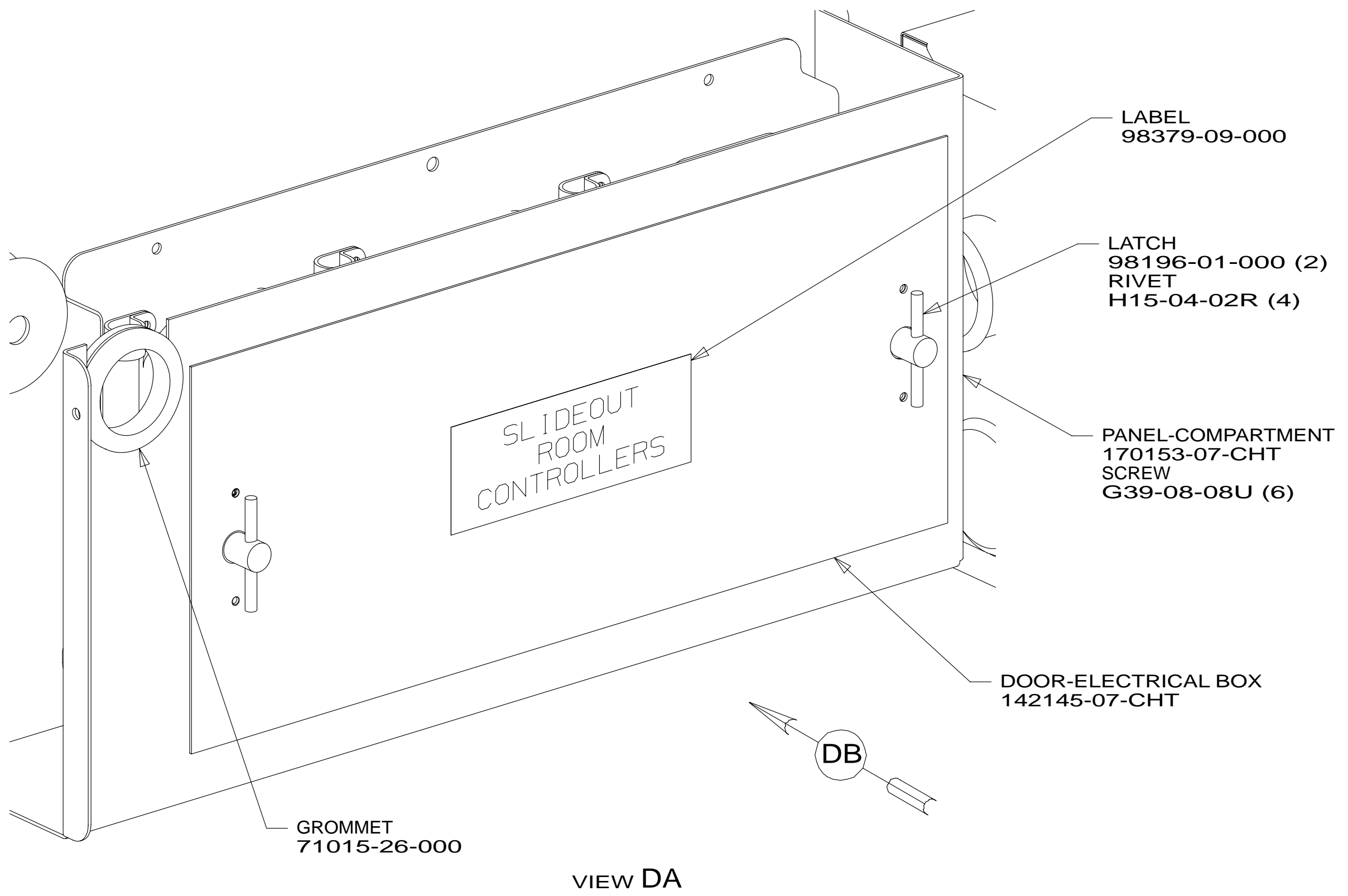
TITLE: **WIRING INSTL-CHASSIS**

SHEET 3 PART NO **185565** REV

21-Nov-2013

\* 185565 \*





FIRST USED	<b>14 730J</b>	
TITLE:	DO NOT SCALE DRAWING	
SHEET 4	PART NO	<b>185565</b>
	REV	
21-Nov-2013		

\* 185565 \* A