



DANGER

Danger of electrical shock, burns or death. Always remove all power sources before attempting any repair, service or diagnostic work. Power can be present from shore power, generator, inverter or battery. All power sources must be disabled and secured before performing any service.

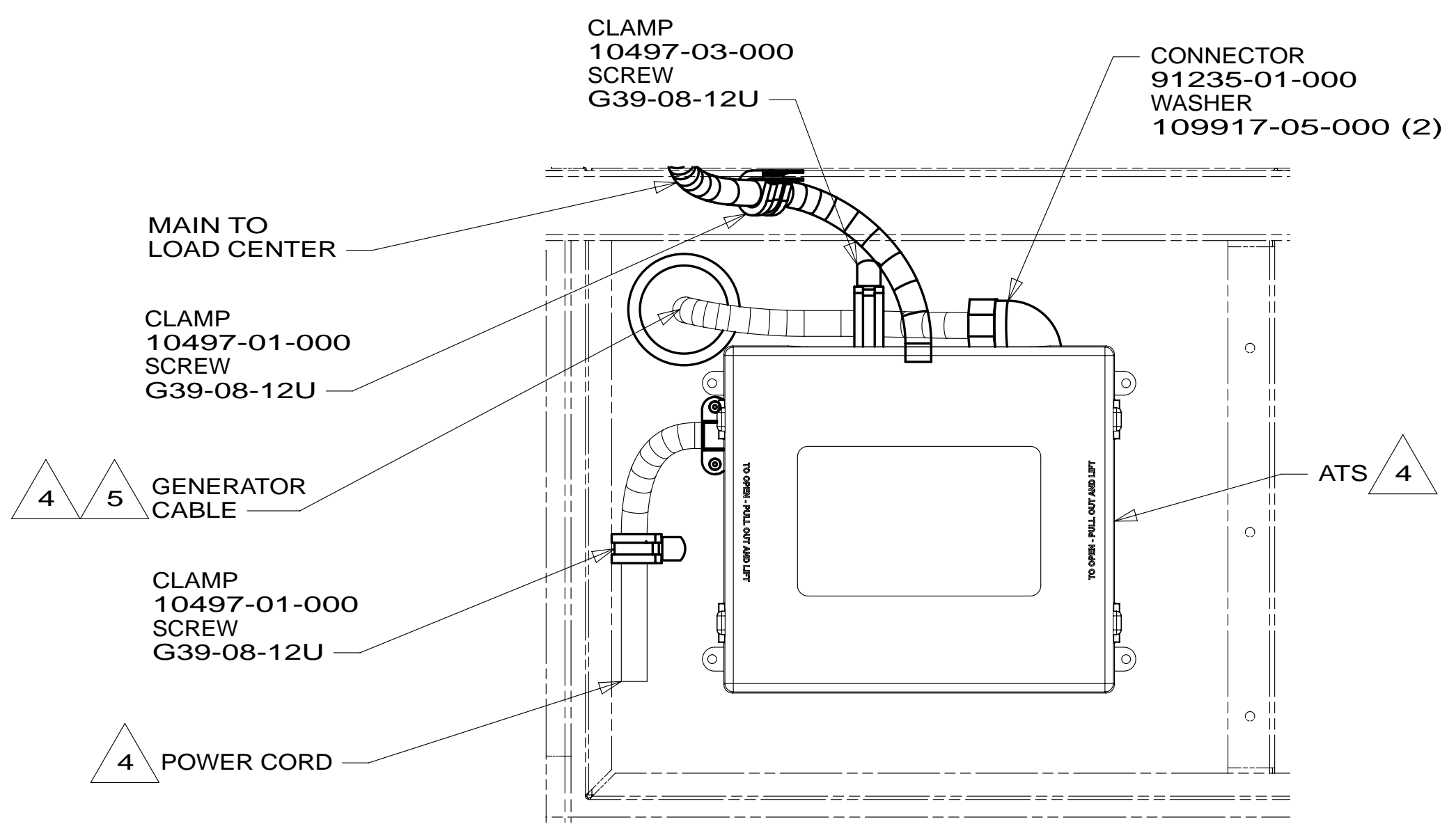
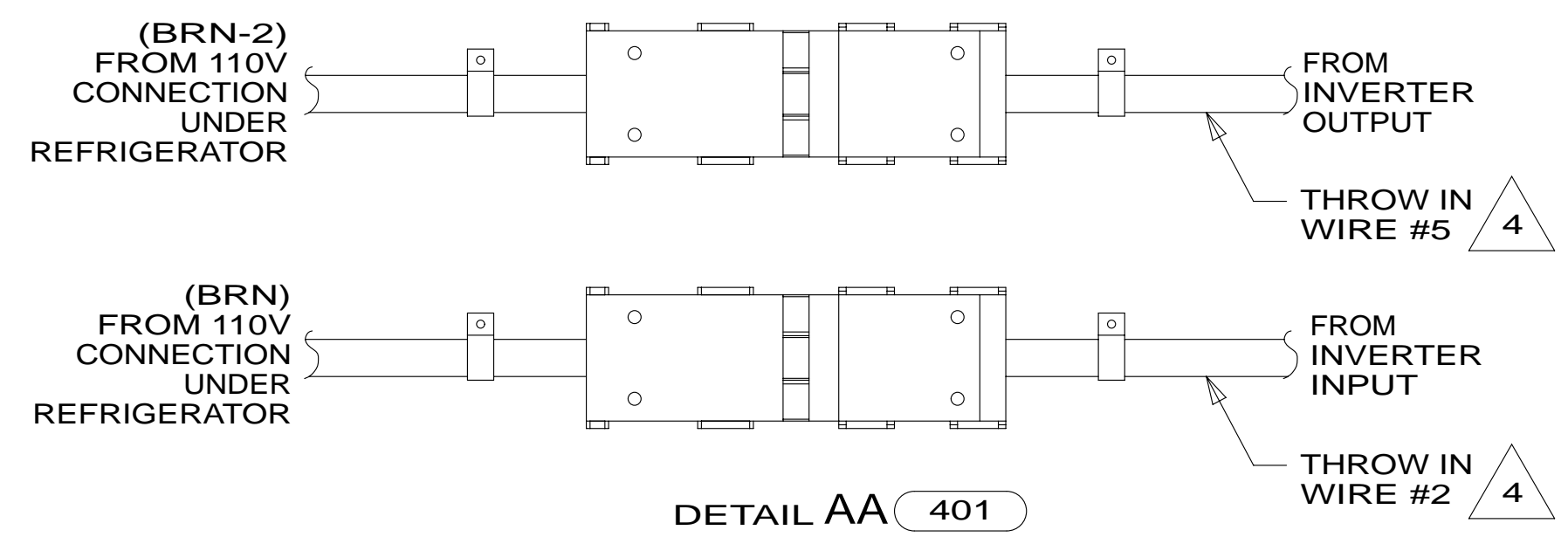
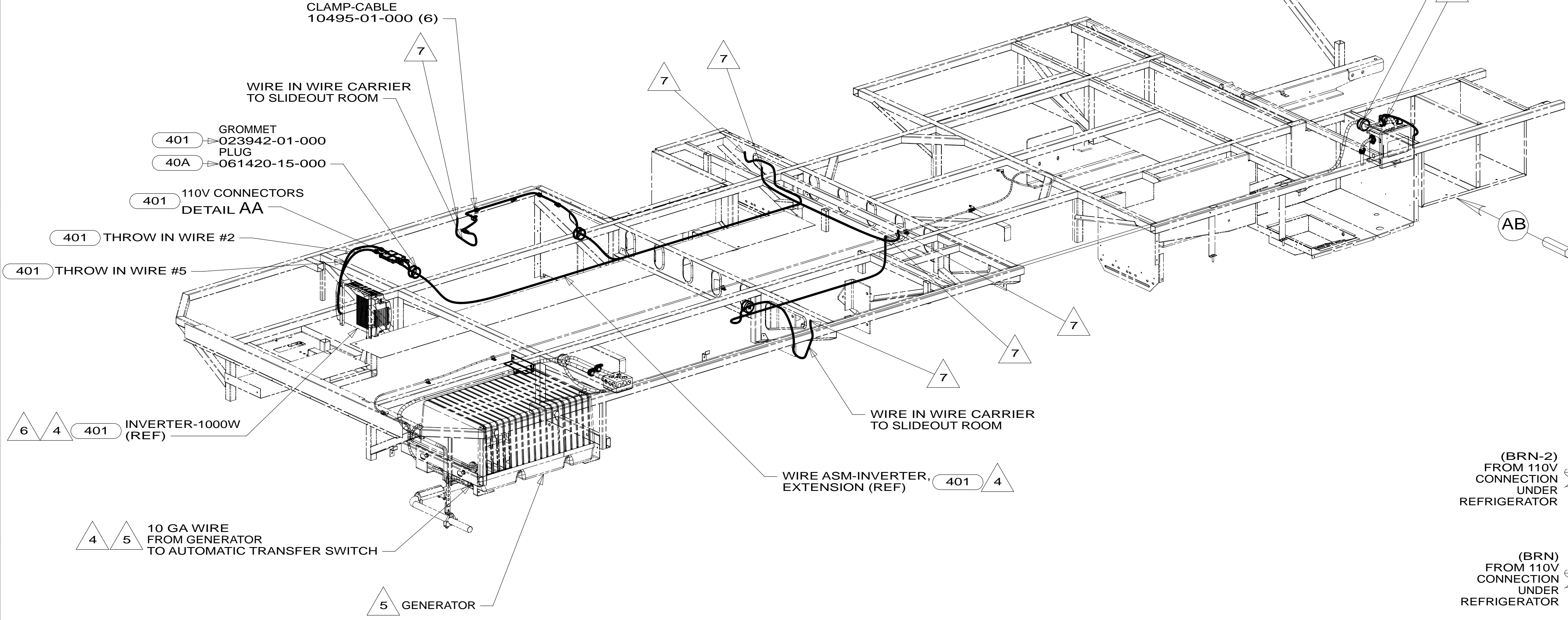


CAUTION

If you lack the skills, tools or equipment to perform diagnostic or repair work leave such work to an authorized Winnebago Industries dealer or other qualified shop.

DRAWING NO.	FEATURE
185562-01	-----
185562-11	1B1 12D
185562-15	265 12D

RELEASE	REV/DATE	DWG NO	185562
REV ZONE	REVISION RECORD	DATE	DFTR-ORIG



- 401 INVERTER-DC/AC, 1000 WATT
- 40A INVERTER-DC/AC WITHOUT
- 12D ELECTRICAL SYSTEM 30 AMP
- 265 CODES/STANDARDS-CSA/CMVSS
- 1B1 CODES/STANDARDS USA

1B1 265 12D

WINNEBAGO COPYRIGHT 2013 WINNEBAGO INDUSTRIES, INC.

DFTR	ORIG. DATE
CHKR	ALL DIMENSIONS ARE IN MILLIMETERS
P.E.	FIRST USED
M.E.	14 730J
DSNR	

UNSPECIFIED TOLERANCES ARE:

WHOLE DIM (X)	: 3
ONE-PLACE (X.X)	: 1.5
TWO-PLACE (X.XX)	: 0.50
ANGLE	: 1'

THIRD ANGLE PROJECTION

DO NOT SCALE DRAWING REFER TO ES0018 FOR FASTENER TIGHTENING GUIDELINES

TITLE: **WIRING INSTL-BODY,110V**

SHEET **1** OF **4** PART NO **185562** REV

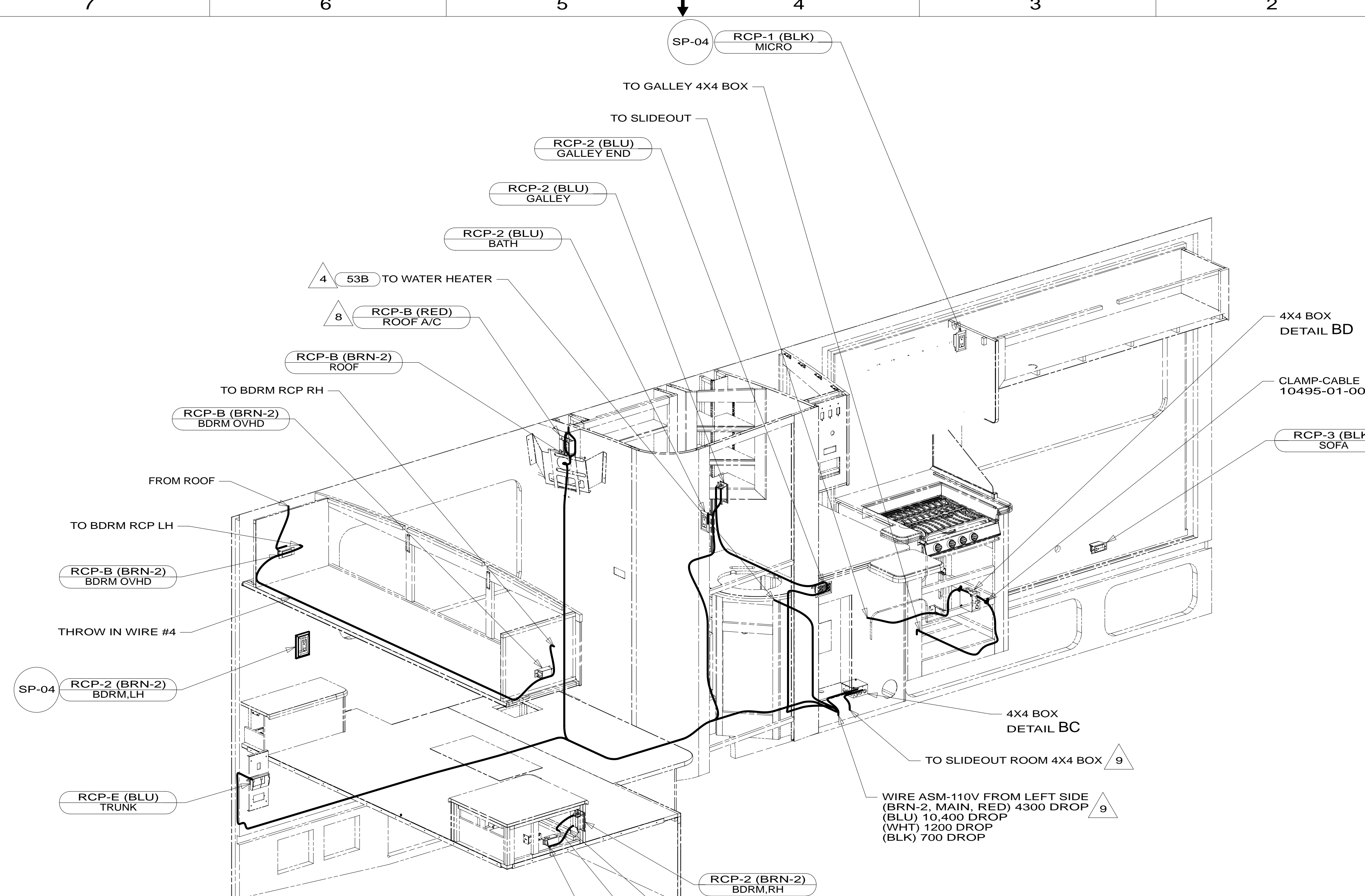
REF: **1** 25-Apr-2013

- NOTES:
- 7 WIRE PASSES THROUGH FLOOR IN THIS AREA.
 - 6 SEE BATTERY INSTL FOR ADDITIONAL INFORMATION.
 - 5 SEE GENERATOR INSTL FOR ADDITIONAL INFORMATION.
 - 4 SEE LOAD CENTER/ATS ASM FOR ADDITIONAL INFORMATION.
3. ALL GROUND WIRES TO BE COVERED WITH TUBING 8041-02-000.
 2. ALL 110V WIRES ARE TO BE CLAMPED WITH CLAMP 10497-05-000 WITHIN 200MM OF OUTLET BOXES, USE SCREW G67-10-12B.
 1. ALL WIRES TO BE SECURED WITH CLAMP 10495 OR 10497 OR WIRE TIE 8343 OR 108046 EVERY 600MM, USE SCREW G67-XX-XXX OR G56-XX-XXX AS APPROPRIATE FOR INSTALLATION.

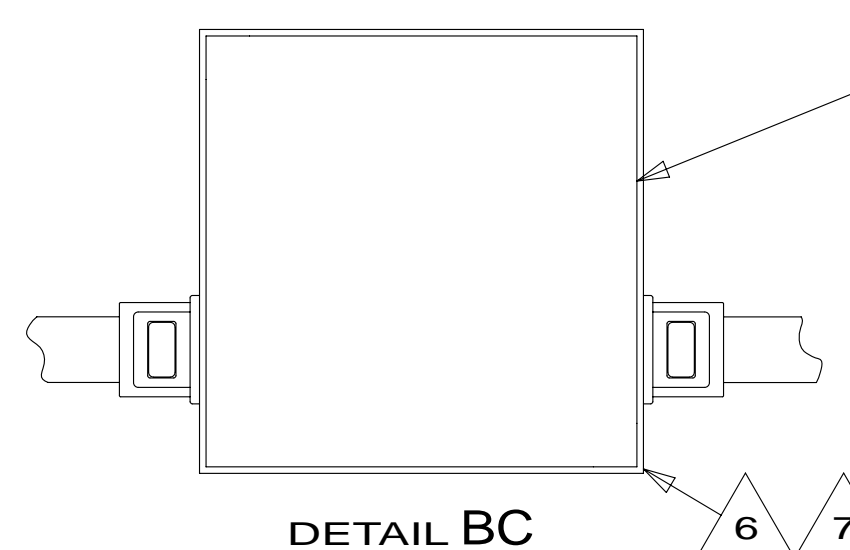
FOR ELECTRICAL TORQUE SPECIFICATIONS SEE DWG NO. 128783-01-000

FOR ELECTRICAL CALLOUTS SEE DWG NO. 121339-01-000

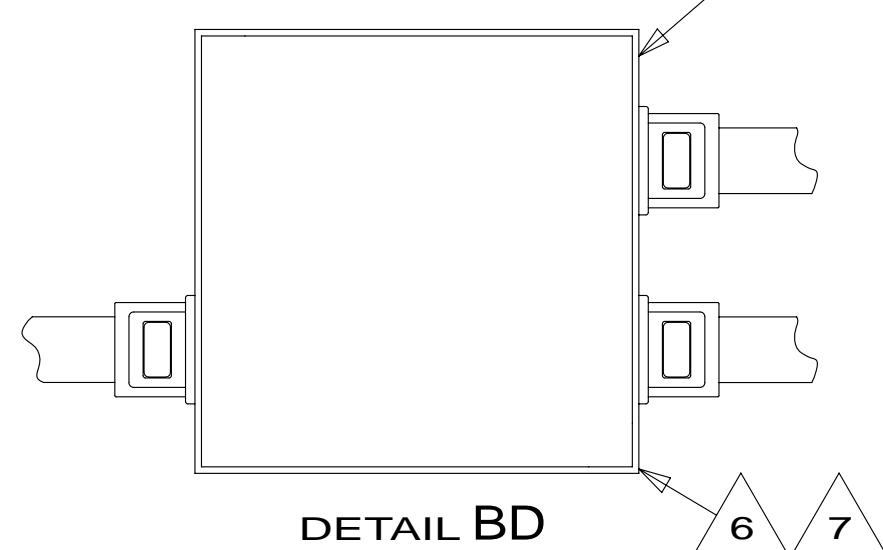
* 185562 *



- 9 WIRE PASSES THROUGH FLOOR IN THIS AREA.
 - 8 SEE WIRING INSTL-ROOF,AC FOR ADDITIONAL INFORMATION.
 - 7 ALL GROUND WIRES TO BE COVERED WITH TUBING 8041-02-000.
 - 6 CONNECT WIRES, WHT TO WHT, BLK TO BLK, GROUNDS TO GROUNDS.
 - 5 THIS CONNECTOR TO BE INSTALLED ON PRODUCTION LINE.
 - 4 SEE LOAD CENTER/ATS ASM FOR ADDITIONAL INFORMATION.
3. ALL GROUND WIRES TO BE COVERED WITH TUBING 8041-02-000.
 2. ALL 110V WIRING TO BE SECURED WITHIN 200MM OF OUTLET BOXES.
 1. ALL WIRES TO BE SECURED WITH CLAMP 10495 OR 10497 OR WIRE TIE 8343 OR 108046 EVERY 600MM, USE SCREW G67-XX-XXX OR G56-XX-XXX AS APPROPRIATE FOR INSTALLATION.



BOX
8289-01-000
SCREW
G11-08-12B (2)
COVER
8294-01-000
CONNECTOR
8356-01-000
8355-01-000
WIRE ASM-GROUND
133678-01-000
CONNECTOR
8313-01-000 (3)
SCREW-GROUND GREEN
103291-01-000



BOX
8289-05-000
SCREW
G11-08-12B (2)
COVER
8294-01-000
CONNECTOR
8356-01-000 (2)
8355-01-000
WIRE ASM-GROUND
133678-01-000
CONNECTOR
8311-01-000 (3)
SCREW-GROUND GREEN
103291-01-000

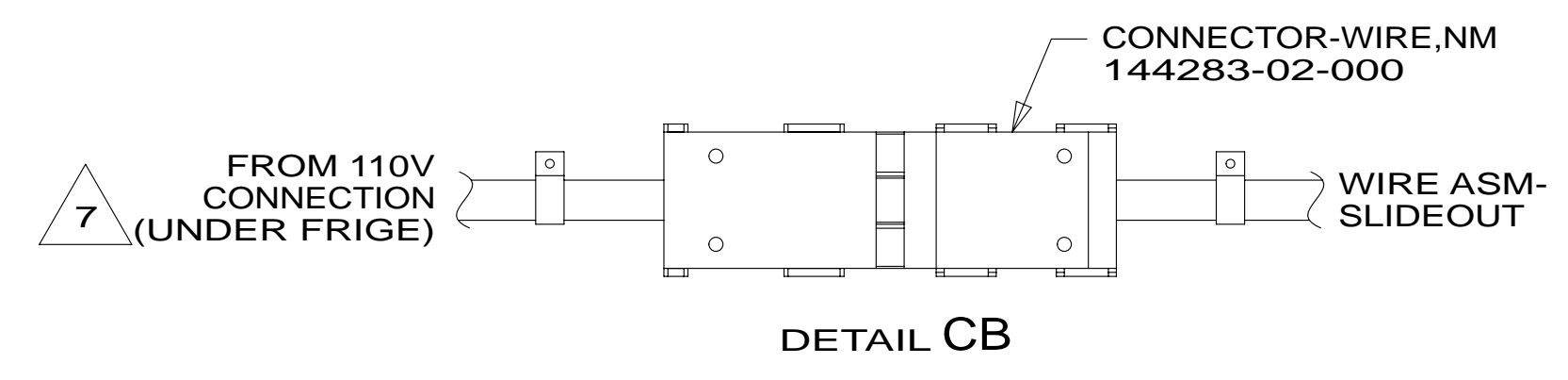
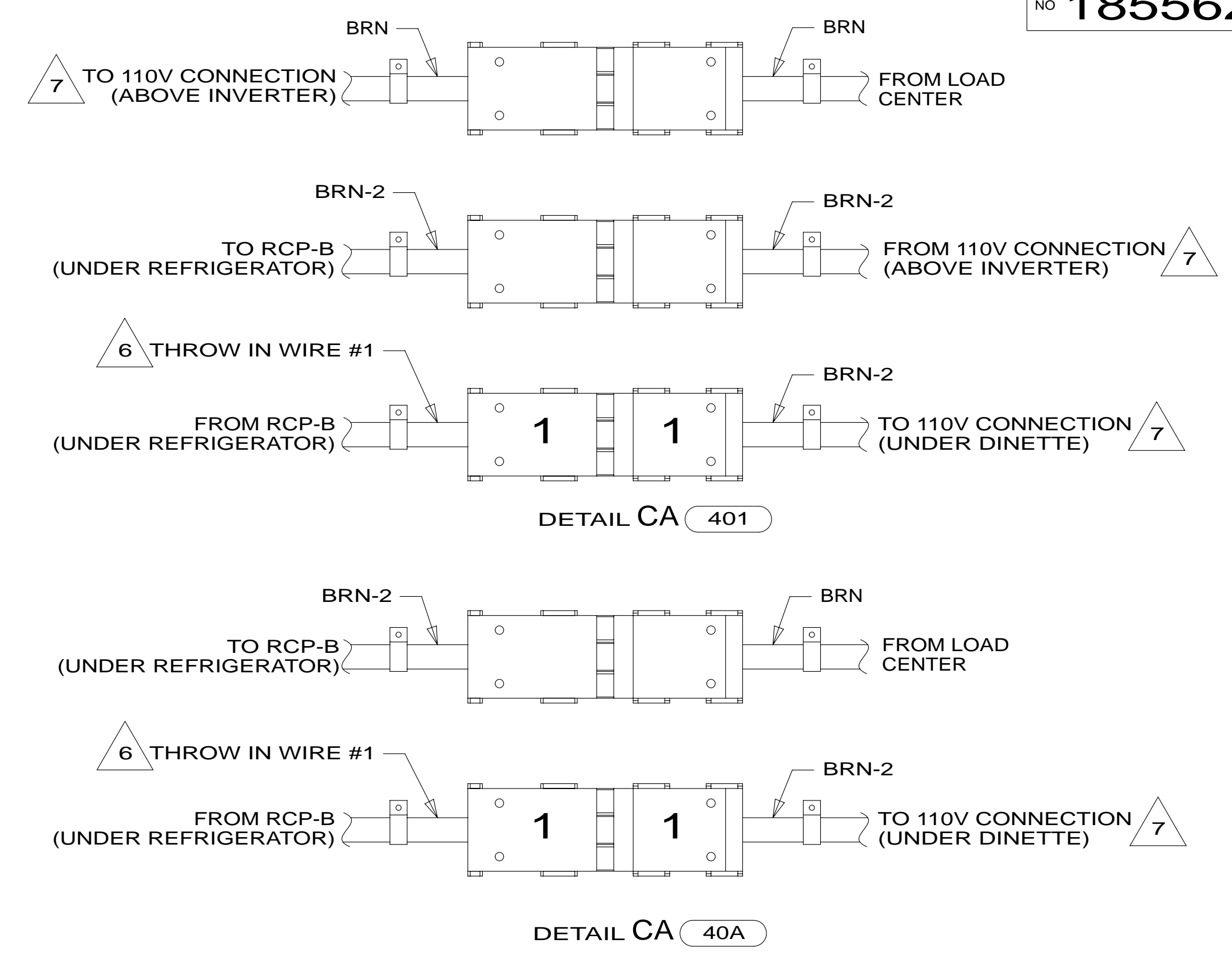
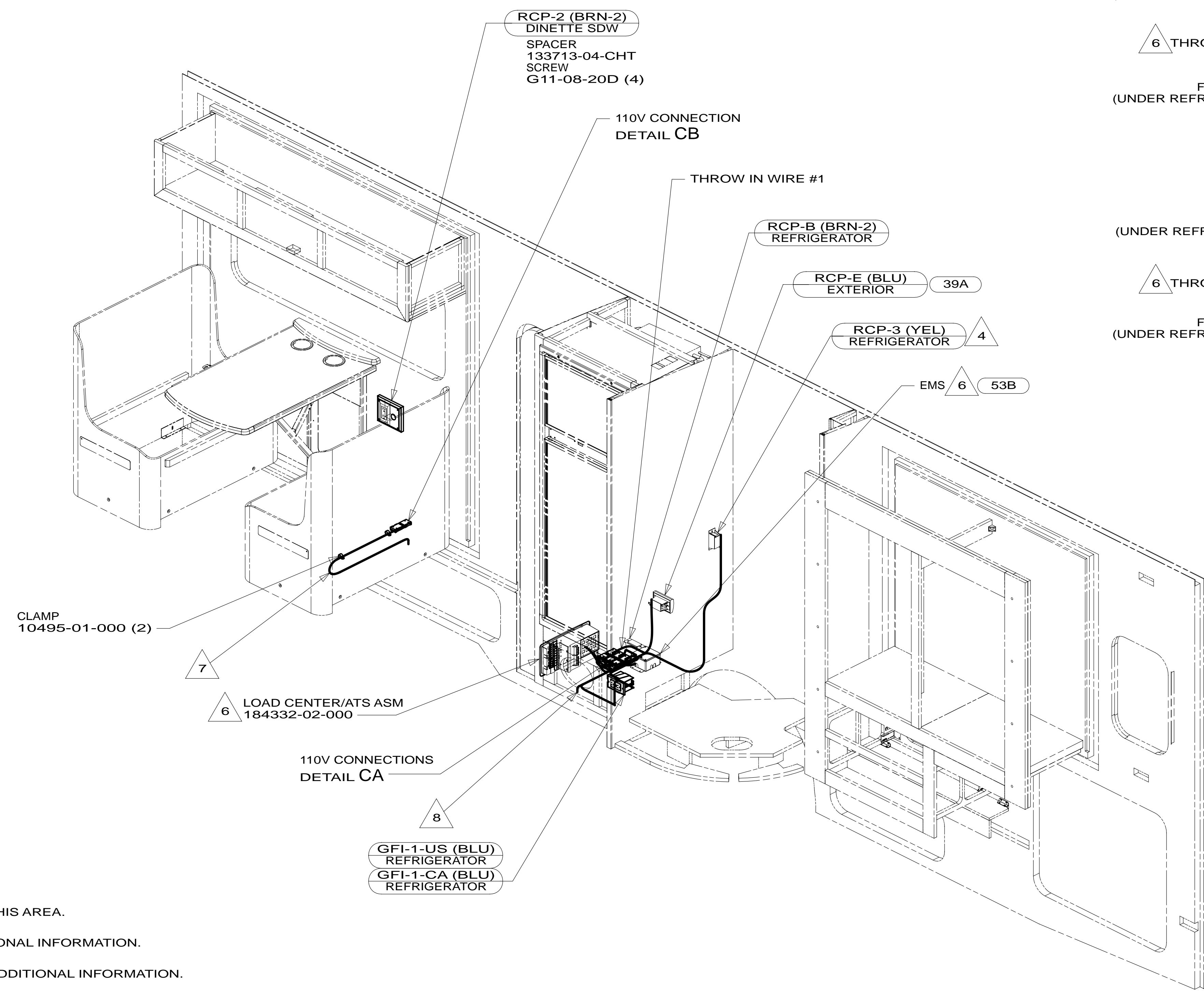
FOR ELECTRICAL TORQUE SPECIFICATIONS SEE DWG NO. 128783-01-000

FOR ELECTRICAL CALLOUTS SEE DWG NO. 121339-01-000

- 49M AIR SLEEP SYSTEM-QUEEN SIZE
- 53B WTR HTR-6GAL ELECTRIC/LP GAS
- 41Q SOFA/SLEEPER-ULTRALEATHER HP
- 12D ELECTRICAL SYSTEM 30 AMP
- 265 CODES/STANDARDS-CSA/CMVSS
- 1B1 CODES/STANDARDS USA

1B1	265	12D
FIRST USED		
14 730J		
DO NOT SCALE DRAWING		
TITLE: WIRING INSTL-BODY,110V		
SHEET 2	PART NO	REV
	185562	

* 185562



- NOTES:
- 8 WIRE PASSES THROUGH FLOOR IN THIS AREA.
 - 7 SEE WIRE ASM-CHASSIS FOR ADDITIONAL INFORMATION.
 - 6 SEE LOAD CENTER/ATS INSTL FOR ADDITIONAL INFORMATION.
 - 5 SEE ENTERTAINMENT CENTER-EXTERIOR FOR ADDITIONAL INFORMATION.
 - 4 LOCATE RCP-REFRIGERATOR ON TIEDOWN STRAP.
3. ALL GROUND WIRES TO BE COVERED WITH TUBING 8041-02-000.
 2. ALL 110V WIRING TO BE SECURED WITHIN 200MM OF OUTLET BOXES.
 1. ALL WIRES TO BE SECURED WITH CLAMP 10495 OR 10497 OR WIRE TIE 8343 OR 108046 EVERY 600MM, USE SCREW G67-XX-XXX OR G56-XX-XXX AS APPROPRIATE FOR INSTALLATION.

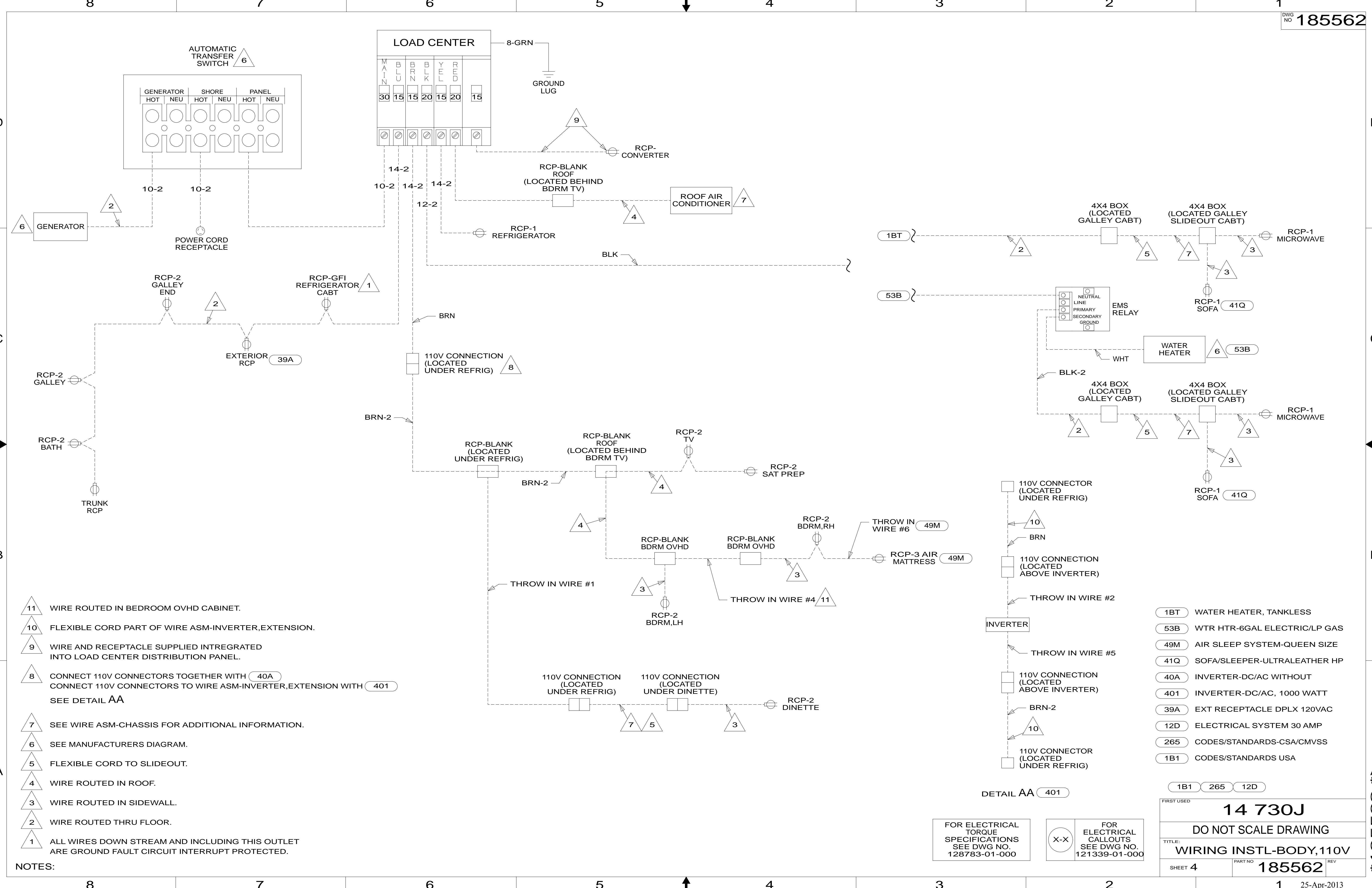
- 40A INVERTER-DC/AC WITHOUT
- 401 INVERTER-DC/AC, 1000 WATT
- 53B WTR HTR-6GAL ELECTRIC/LP GAS
- 39A EXT RECEPTACLE DPLX 120VAC
- 12D ELECTRICAL SYSTEM 30 AMP
- 265 CODES/STANDARDS-CSA/CMVSS
- 1B1 CODES/STANDARDS USA

FOR ELECTRICAL TORQUE SPECIFICATIONS SEE DWG NO. 128783-01-000

FOR ELECTRICAL CALLOUTS SEE DWG NO. 121339-01-000

1B1	265	12D
FIRST USED		
14 730J		
DO NOT SCALE DRAWING		
WIRING INSTL-BODY, 110V		
SHEET 3	PART NO. 185562	REV
25-Apr-2013		

* 185562 *



- NOTES:
- 11 WIRE ROUTED IN BEDROOM OVHD CABINET.
 - 10 FLEXIBLE CORD PART OF WIRE ASM-INVERTER,EXTENSION.
 - 9 WIRE AND RECEPTACLE SUPPLIED INTREGATED INTO LOAD CENTER DISTRIBUTION PANEL.
 - 8 CONNECT 110V CONNECTORS TOGETHER WITH (40A) CONNECT 110V CONNECTORS TO WIRE ASM-INVERTER,EXTENSION WITH (401) SEE DETAIL AA
 - 7 SEE WIRE ASM-CHASSIS FOR ADDITIONAL INFORMATION.
 - 6 SEE MANUFACTURERS DIAGRAM.
 - 5 FLEXIBLE CORD TO SLIDEOUT.
 - 4 WIRE ROUTED IN ROOF.
 - 3 WIRE ROUTED IN SIDEWALL.
 - 2 WIRE ROUTED THRU FLOOR.
 - 1 ALL WIRES DOWN STREAM AND INCLUDING THIS OUTLET ARE GROUND FAULT CIRCUIT INTERRUPT PROTECTED.

- 1BT WATER HEATER, TANKLESS
- 53B WTR HTR-6GAL ELECTRIC/LP GAS
- 49M AIR SLEEP SYSTEM-QUEEN SIZE
- 41Q SOFA/SLEEPER-ULTRALEATHER HP
- 40A INVERTER-DC/AC WITHOUT
- 401 INVERTER-DC/AC, 1000 WATT
- 39A EXT RECEPTACLE DPLX 120VAC
- 12D ELECTRICAL SYSTEM 30 AMP
- 265 CODES/STANDARDS-CSA/CMVSS
- 1B1 CODES/STANDARDS USA

FOR ELECTRICAL TORQUE SPECIFICATIONS SEE DWG NO. 128783-01-000

FOR ELECTRICAL CALLOUTS SEE DWG NO. 121339-01-000

14 730J
DO NOT SCALE DRAWING
TITLE: WIRING INSTL-BODY,110V
SHEET 4 PART NO 185562 REV
25-Apr-2013

* 185562 * A