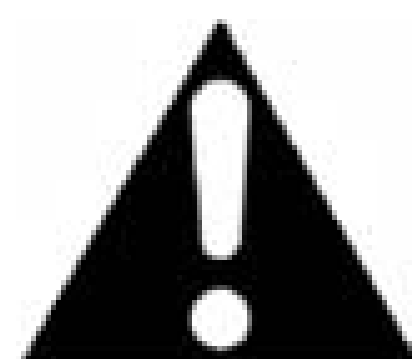




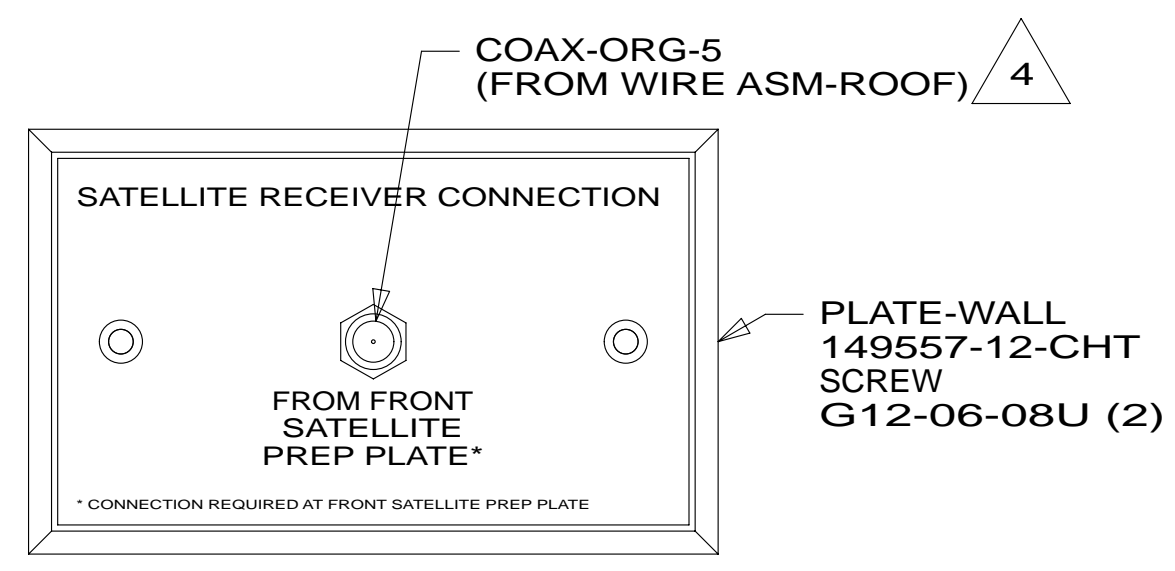
DANGER

Danger of electrical shock, burns or death. Always remove all power sources before attempting any repair, service or diagnostic work. Power can be present from shore power, generator, inverter or battery. All power sources must be disabled and secured before performing any service.

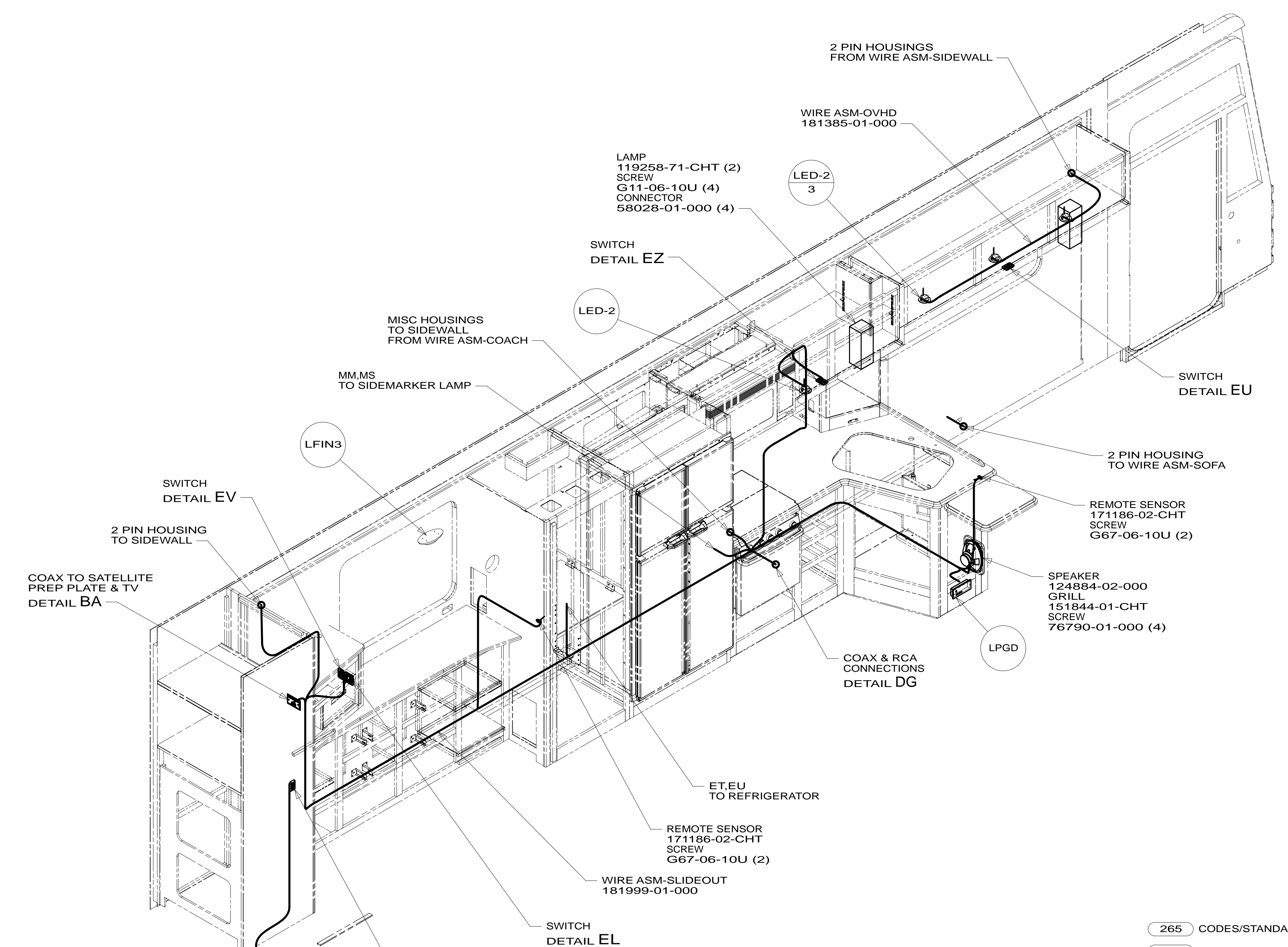


CAUTION

If you lack the skills, tools or equipment to perform diagnostic or repair work leave such work to an authorized Winnebago Industries dealer or other qualified shop.



DETAIL BA



- NOTES:
- 4 CONNECTS TO REAR OF SATELLITE PREP PLATE.
 - 3 WIRE PASSES THROUGH FLOOR AT THIS POINT.
 - 2. SEE WIRING DIAGRAM-BODY,12V FOR ADDITIONAL INFORMATION.
 - 1. ALL WIRES TO BE CLAMPED WITH CLAMP 10495-01-000 OR WIRE TIE 8343-02-000 EVERY 600MM UNLESS OTHERWISE SPECIFIED.

265	CODES/STANDARDS-CSA/CMVSS
1B1	CODES/STANDARDS USA
1B1	265

FOR ELECTRICAL TORQUE SPECIFICATIONS SEE DWG NO. 128783-01-000

FOR ELECTRICAL CALLOUTS SEE DWG NO. 121339-01-000

FIRST USED

14 J35P

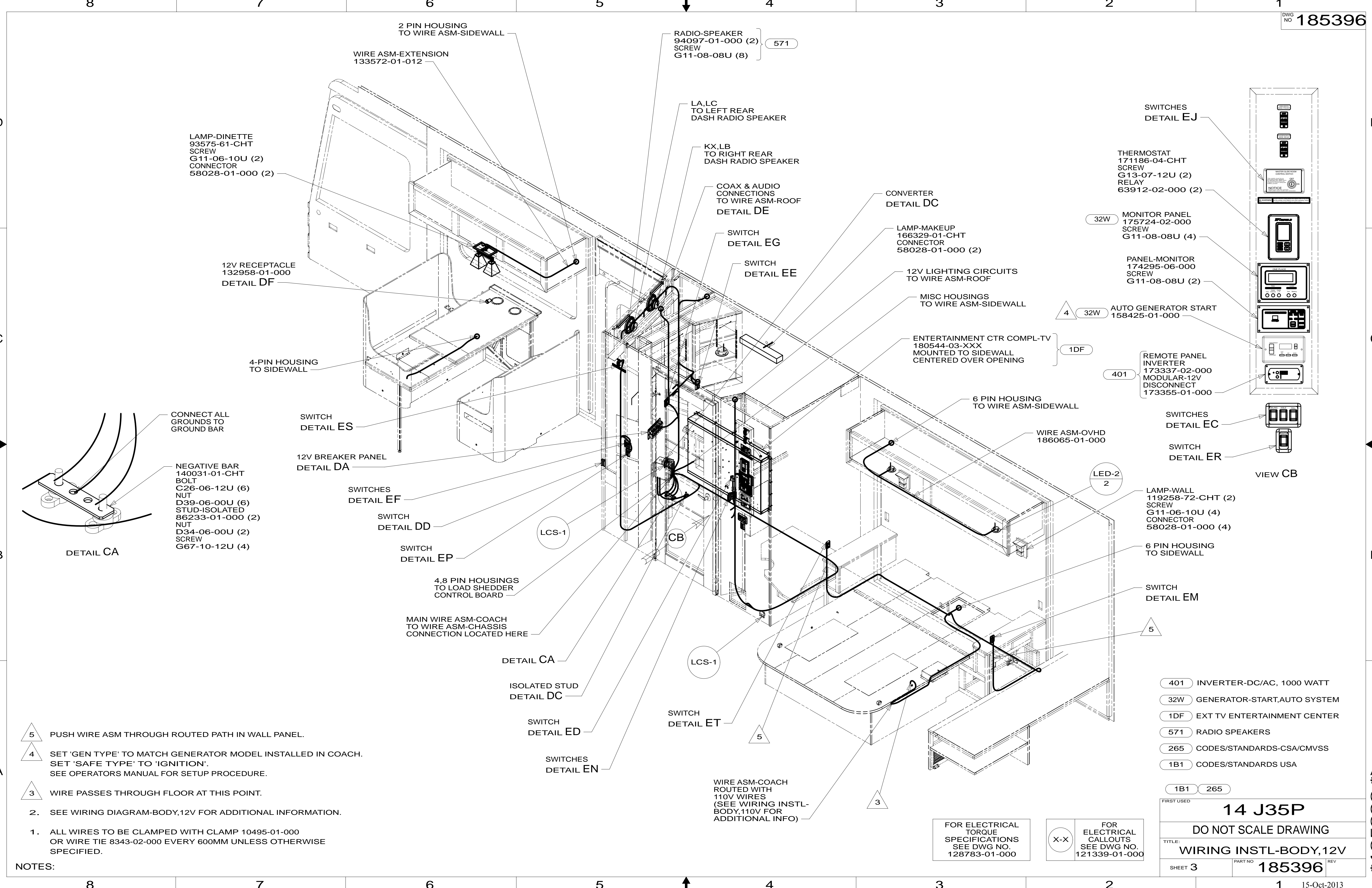
DO NOT SCALE DRAWING

TITLE: **WIRING INSTL-BODY,12V**

SHEET 2 PART NO **185396** REV

15-Oct-2013

* 185396 * A



8
7
6
5
4
3
2
1

D
C
B
A

- NOTES:
1. ALL WIRES TO BE CLAMPED WITH CLAMP 10495-01-000 OR WIRE TIE 8343-02-000 EVERY 600MM UNLESS OTHERWISE SPECIFIED.
 2. SEE WIRING DIAGRAM-BODY,12V FOR ADDITIONAL INFORMATION.
 3. WIRE PASSES THROUGH FLOOR AT THIS POINT.
 4. SET 'GEN TYPE' TO MATCH GENERATOR MODEL INSTALLED IN COACH. SET 'SAFE TYPE' TO 'IGNITION'. SEE OPERATORS MANUAL FOR SETUP PROCEDURE.
 5. PUSH WIRE ASM THROUGH ROUTED PATH IN WALL PANEL.

8
7
6
5
4
3
2
1

LAMP-DINETTE
93575-61-CHT
SCREW
G11-06-10U (2)
CONNECTOR
58028-01-000 (2)

12V RECEPTACLE
132958-01-000
DETAIL DF

CONNECT ALL
GROUNDS TO
GROUND BAR

NEGATIVE BAR
140031-01-CHT
BOLT
C26-06-12U (6)
NUT
D39-06-00U (6)
STUD-ISOLATED
86233-01-000 (2)
NUT
D34-06-00U (2)
SCREW
G67-10-12U (4)

WIRE ASM-EXTENSION
133572-01-012

2 PIN HOUSING
TO WIRE ASM-SIDEWALL

RADIO-SPEAKER
94097-01-000 (2)
SCREW
G11-08-08U (8)

LA,LC
TO LEFT REAR
DASH RADIO SPEAKER

KX,LB
TO RIGHT REAR
DASH RADIO SPEAKER

COAX & AUDIO
CONNECTIONS
TO WIRE ASM-ROOF
DETAIL DE

SWITCH
DETAIL EG

SWITCH
DETAIL EE

CONVERTER
DETAIL DC

LAMP-MAKEUP
166329-01-CHT
CONNECTOR
58028-01-000 (2)

12V LIGHTING CIRCUITS
TO WIRE ASM-ROOF

MISC HOUSINGS
TO WIRE ASM-SIDEWALL

ENTERTAINMENT CTR COMPL-TV
180544-03-XXX
MOUNTED TO SIDEWALL
CENTERED OVER OPENING

6 PIN HOUSING
TO WIRE ASM-SIDEWALL

WIRE ASM-OVHD
186065-01-000

SWITCHES
DETAIL EJ

THERMOSTAT
171186-04-CHT
SCREW
G13-07-12U (2)
RELAY
63912-02-000 (2)

32W MONITOR PANEL
175724-02-000
SCREW
G11-08-08U (4)

PANEL-MONITOR
174295-06-000
SCREW
G11-08-08U (2)

4 32W AUTO GENERATOR START
158425-01-000

401 REMOTE PANEL
INVERTER
173337-02-000
MODULAR-12V
DISCONNECT
173355-01-000

SWITCHES
DETAIL EC

SWITCH
DETAIL ER

VIEW CB

LAMP-WALL
119258-72-CHT (2)
SCREW
G11-06-10U (4)
CONNECTOR
58028-01-000 (4)

6 PIN HOUSING
TO SIDEWALL

SWITCH
DETAIL EM

12V BREAKER PANEL
DETAIL DA

SWITCHES
DETAIL EF

SWITCH
DETAIL DD

SWITCH
DETAIL EP

4.8 PIN HOUSINGS
TO LOAD SHEDDER
CONTROL BOARD

MAIN WIRE ASM-COACH
TO WIRE ASM-CHASSIS
CONNECTION LOCATED HERE

DETAIL CA

ISOLATED STUD
DETAIL DC

SWITCH
DETAIL ED

SWITCHES
DETAIL EN

SWITCH
DETAIL ET

WIRE ASM-COACH
ROUTED WITH
110V WIRES
(SEE WIRING INSTL-
BODY,110V FOR
ADDITIONAL INFO)

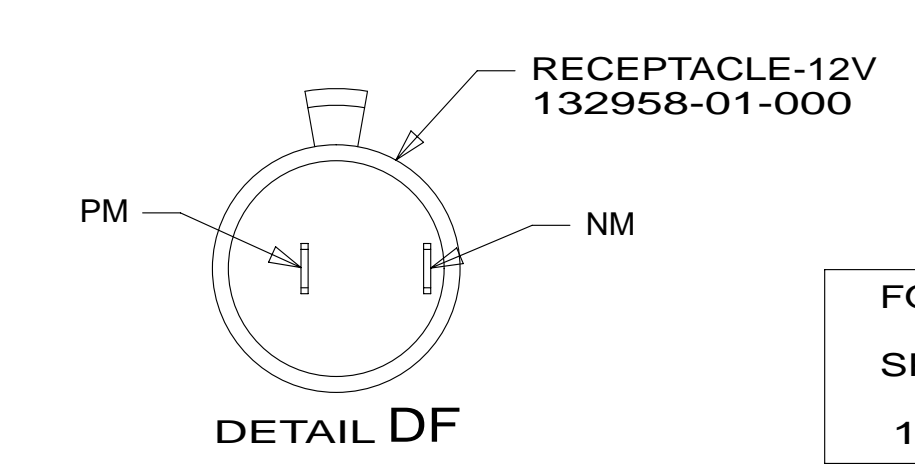
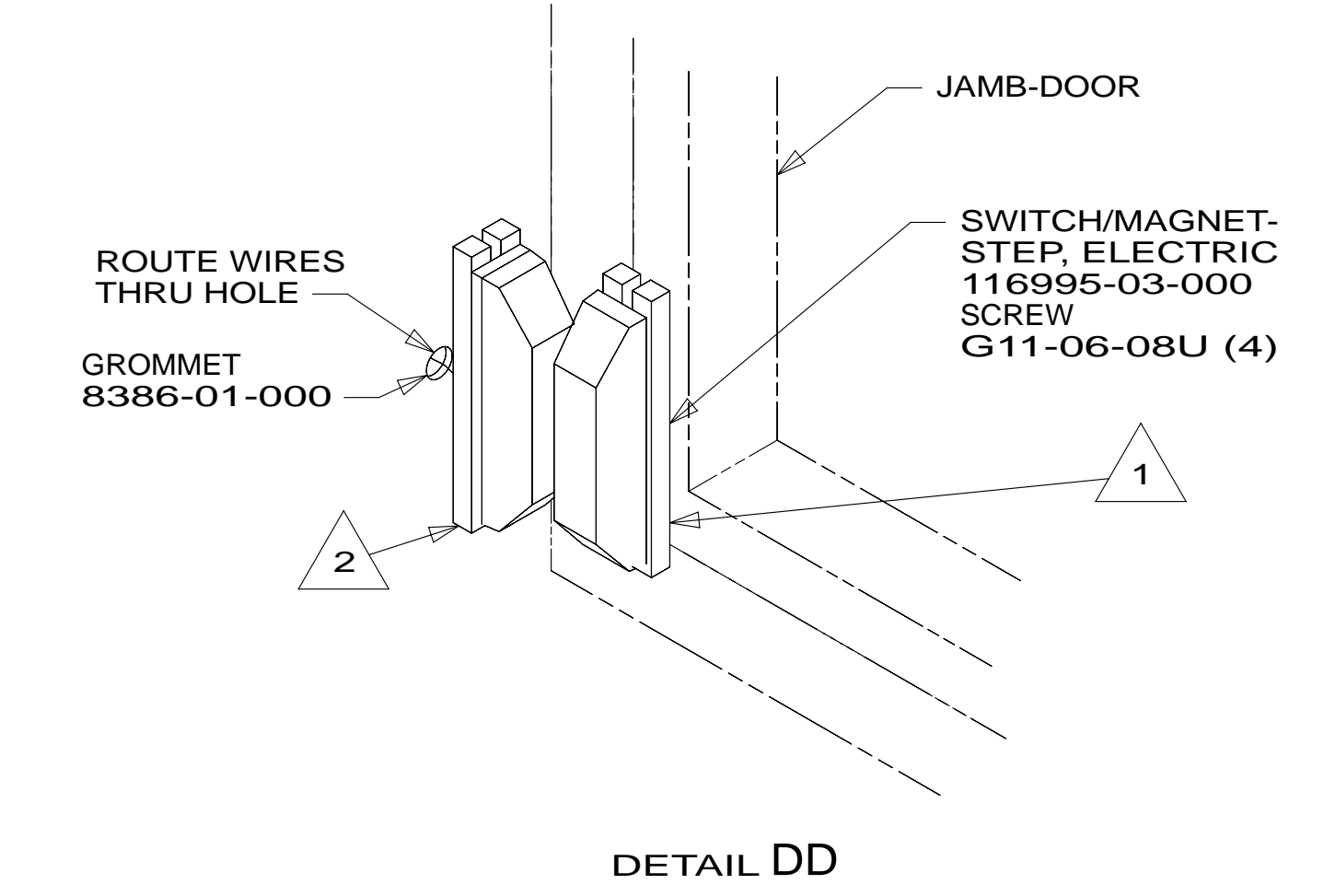
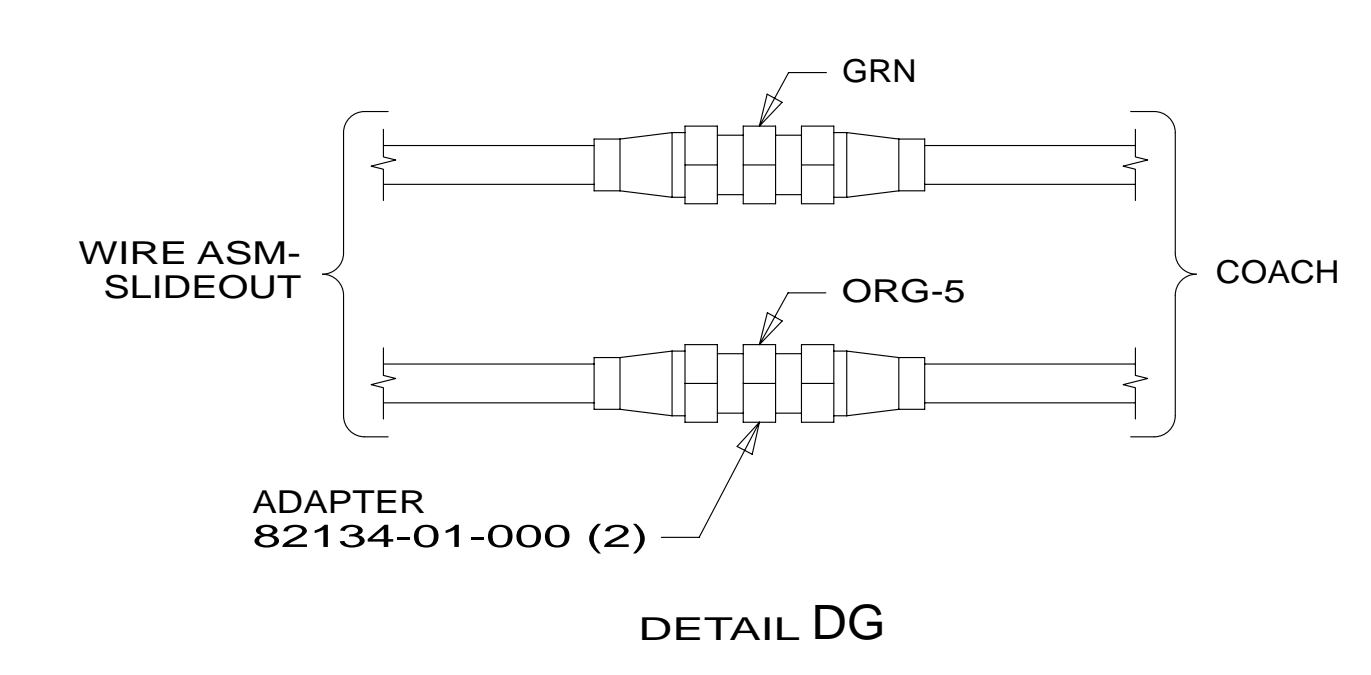
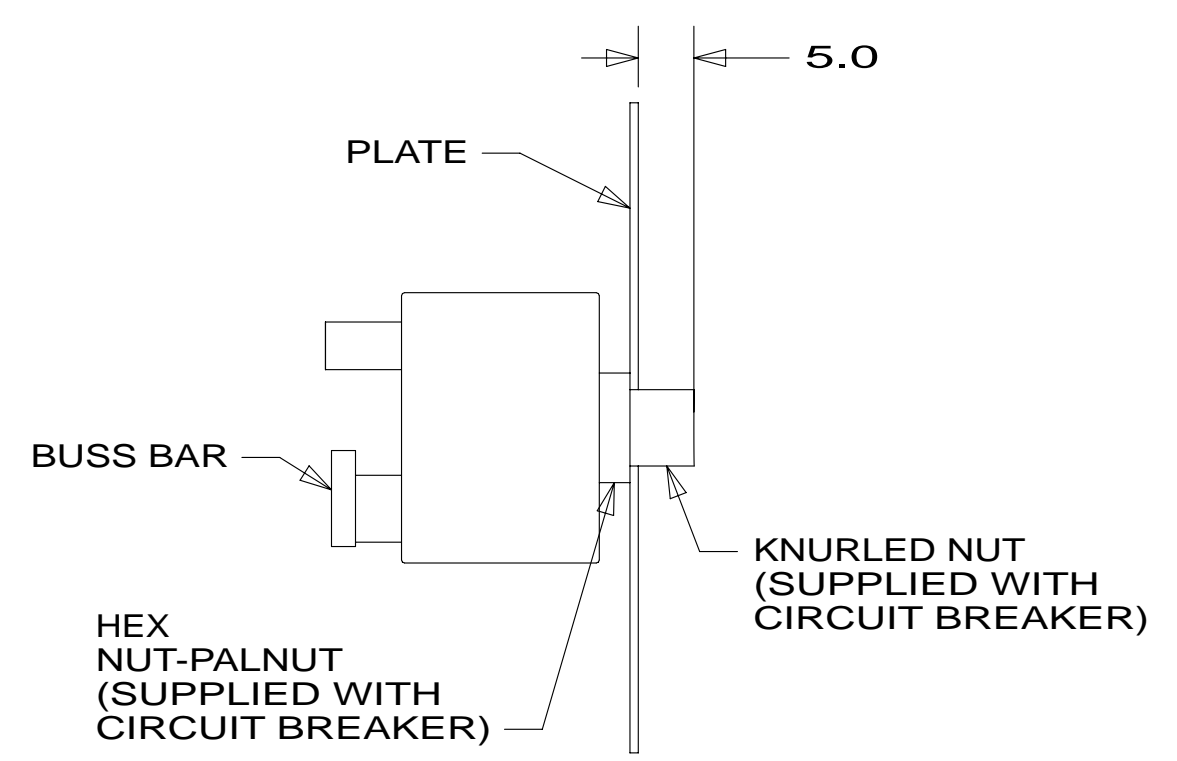
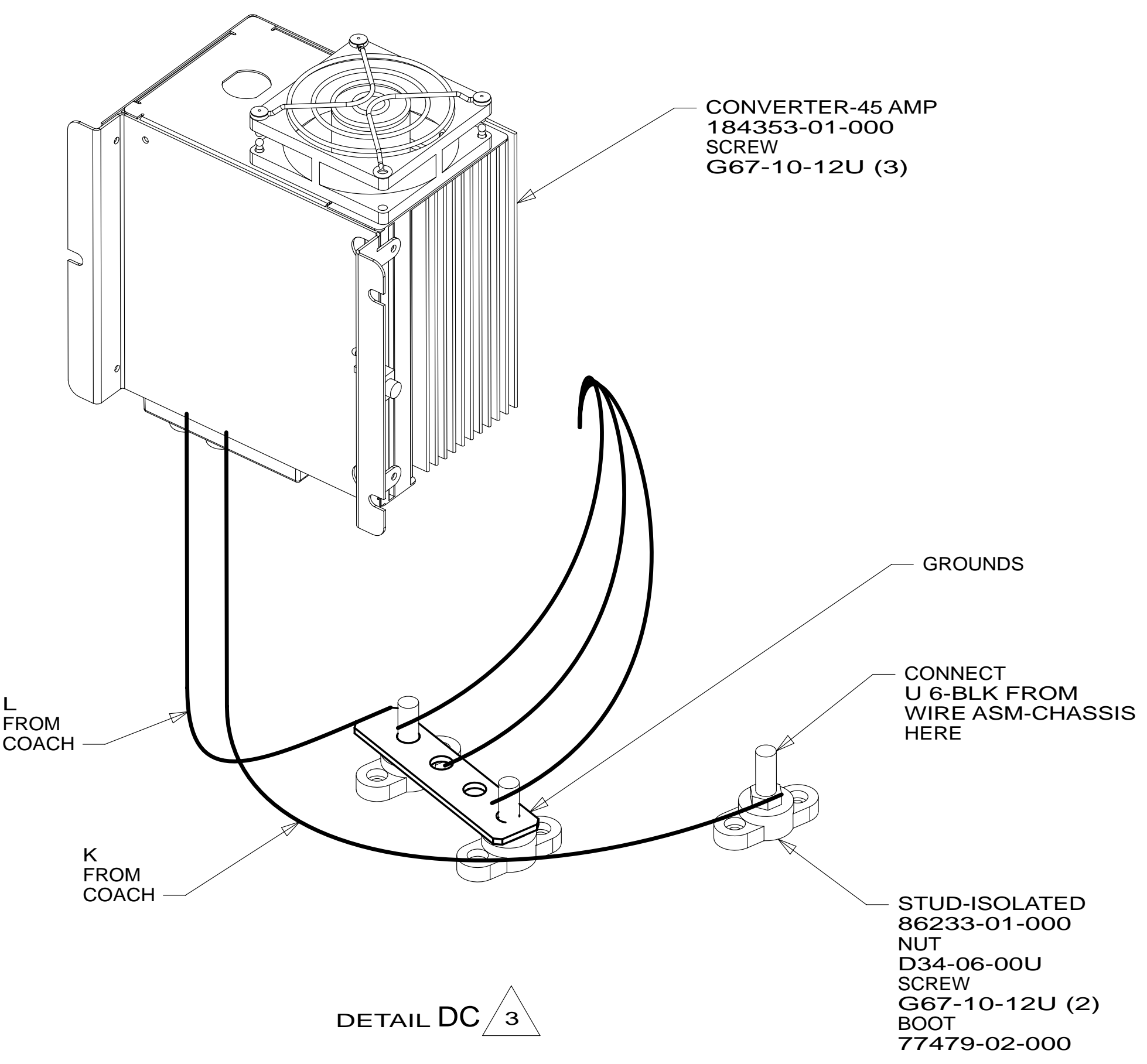
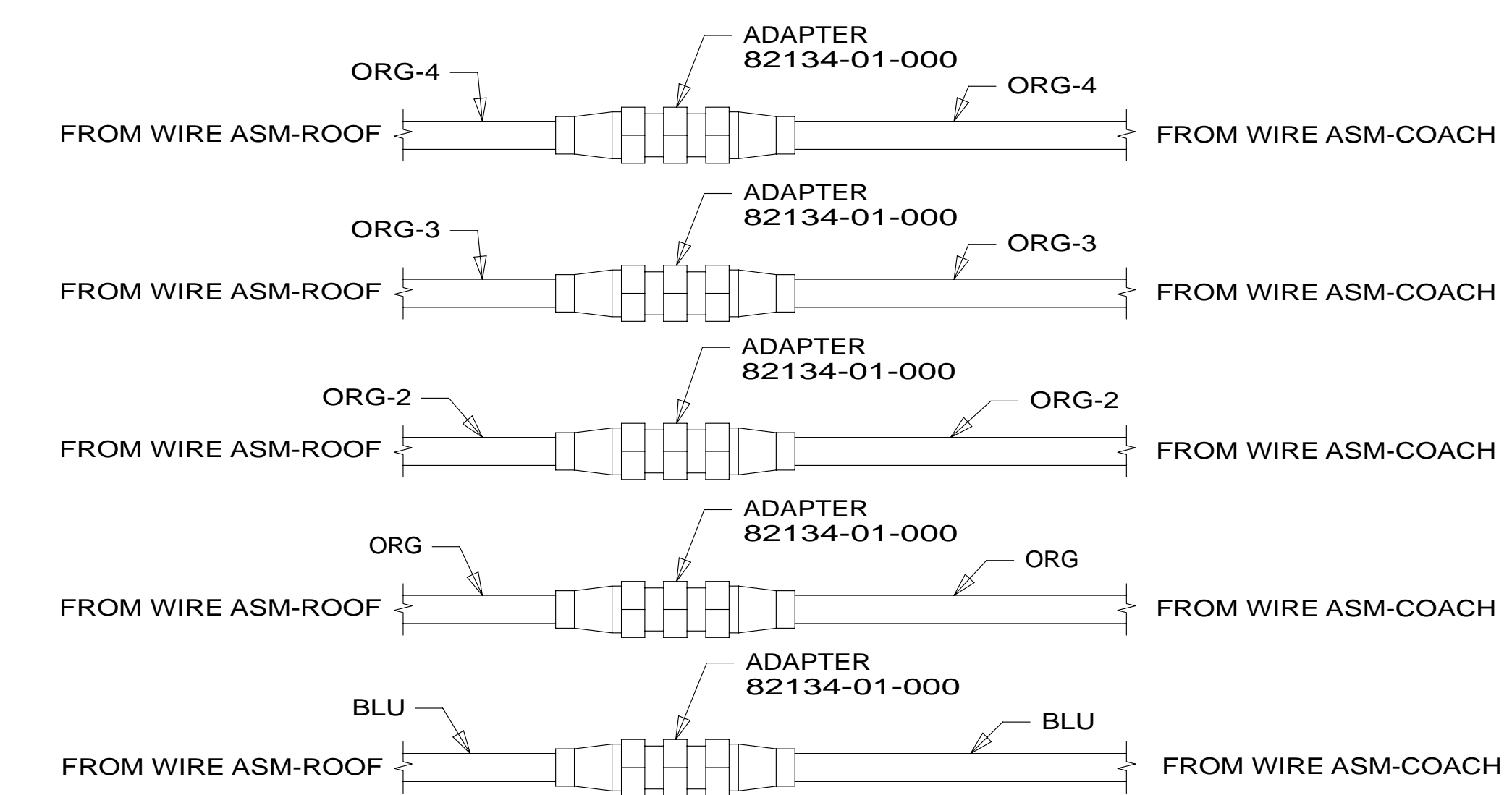
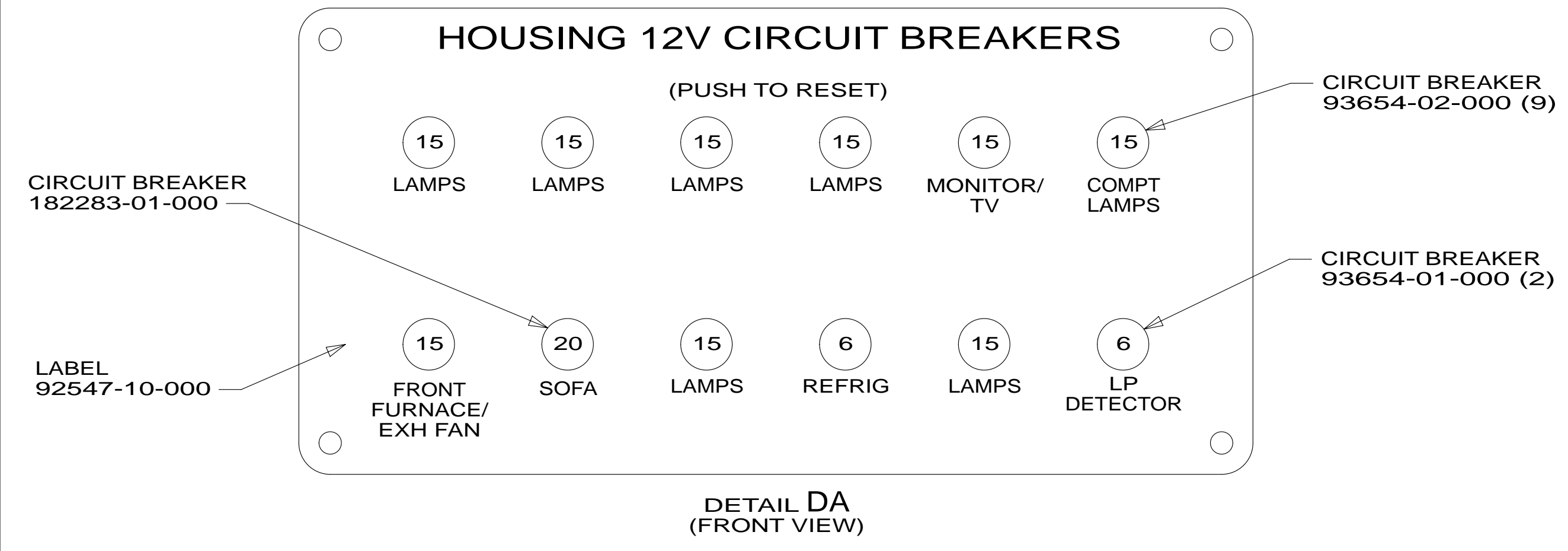
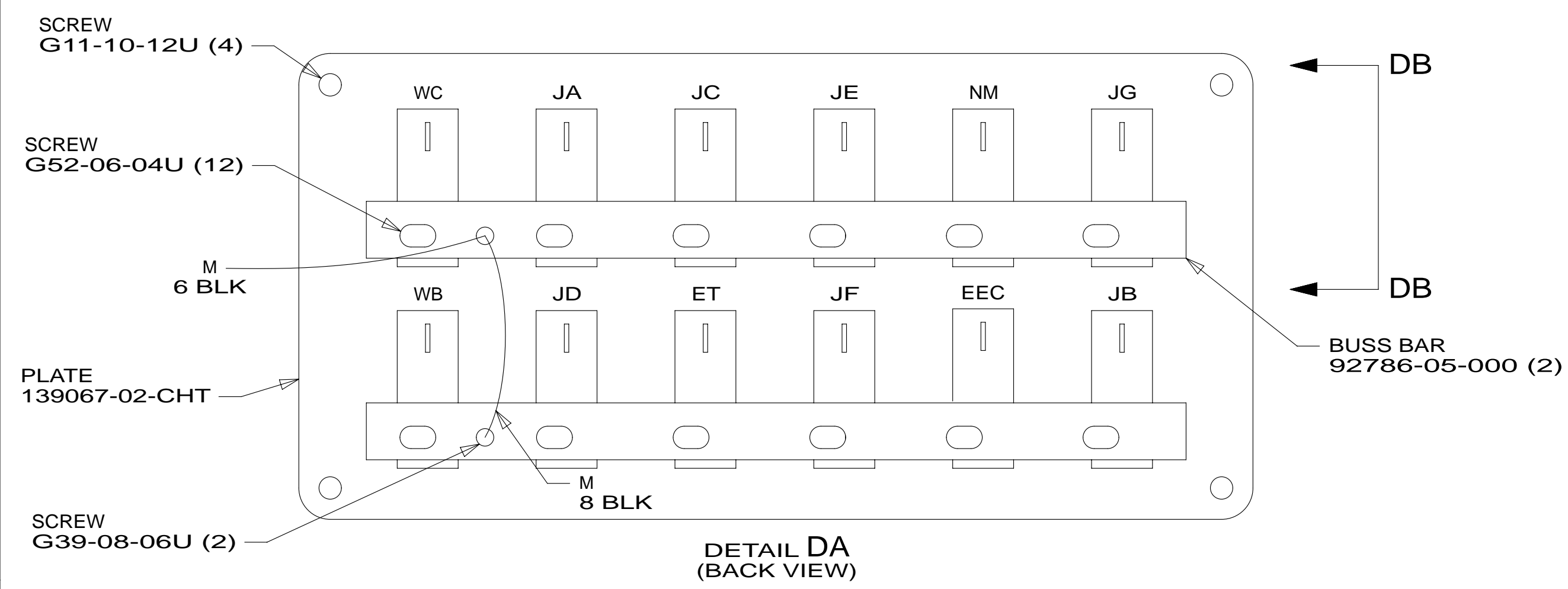
FOR ELECTRICAL
TORQUE
SPECIFICATIONS
SEE DWG NO.
128783-01-000

FOR
ELECTRICAL
CALLOUTS
SEE DWG NO.
121339-01-000

- 401 INVERTER-DC/AC, 1000 WATT
- 32W GENERATOR-START,AUTO SYSTEM
- 1DF EXT TV ENTERTAINMENT CENTER
- 571 RADIO SPEAKERS
- 265 CODES/STANDARDS-CSA/CMVSS
- 1B1 CODES/STANDARDS USA

FIRST USED	
14 J35P	
DO NOT SCALE DRAWING	
TITLE: WIRING INSTL-BODY,12V	
SHEET 3	PART NO 185396 REV

1
185396
A *
15-Oct-2013



NOTES:

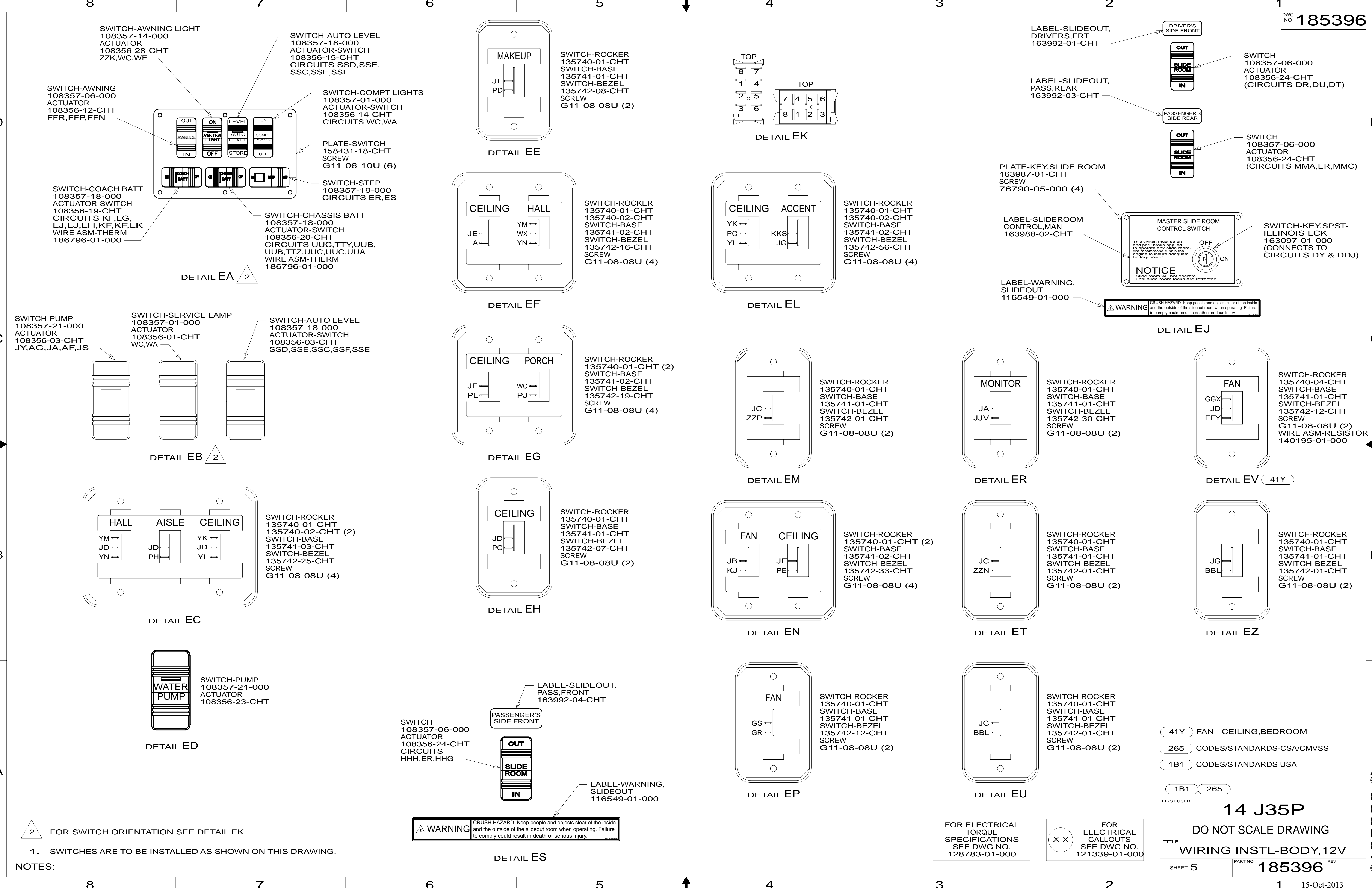
- 3 FOR POSITIONING DIMENSIONS SEE WIRING INSTL-BODY, 110V.
- 2 MOUNT SWITCH AND SPACER TO BLOCK ON JAMB ADJUST HEIGHT TO MATCH MAGNET.
- 1 MOUNT MAGNET USING PILOT HOLES IN SCREEN DOOR FRAME. MOUNT WITH MAGNET TOWARD SWITCH.

FOR ELECTRICAL TORQUE SPECIFICATIONS SEE DWG NO. 128783-01-000

FOR ELECTRICAL CALLOUTS SEE DWG NO. 121339-01-000

265	CODES/STANDARDS-CSA/CMVSS
1B1	CODES/STANDARDS USA
1B1	265
FIRST USED	
14 J35P	
DO NOT SCALE DRAWING	
WIRING INSTL-BODY, 12V	
SHEET 4	PART NO. 185396 REV
15-Oct-2013	

* 185396 *



2 FOR SWITCH ORIENTATION SEE DETAIL EK.
 1. SWITCHES ARE TO BE INSTALLED AS SHOWN ON THIS DRAWING.
 NOTES:

WARNING CRUSH HAZARD. Keep people and objects clear of the inside and the outside of the slideout room when operating. Failure to comply could result in death or serious injury.

FOR ELECTRICAL TORQUE SPECIFICATIONS SEE DWG NO. 128783-01-000

FOR ELECTRICAL CALLOUTS SEE DWG NO. 121339-01-000

- 41Y FAN - CEILING, BEDROOM
- 265 CODES/STANDARDS-CSA/CMVSS
- 1B1 CODES/STANDARDS USA

FIRST USED	
14 J35P	
DO NOT SCALE DRAWING	
TITLE: WIRING INSTL-BODY, 12V	
SHEET 5	PART NO. 185396 REV
15-Oct-2013	

* 185396

8

7

6

5

4

3

2

1

D

D

C

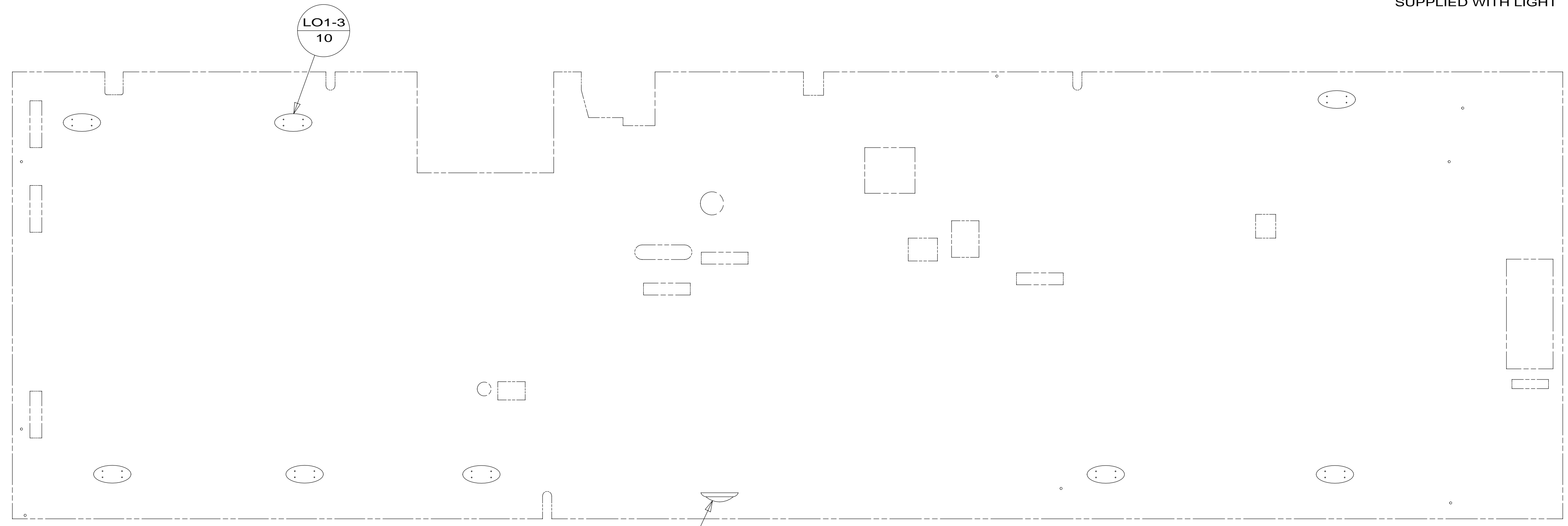
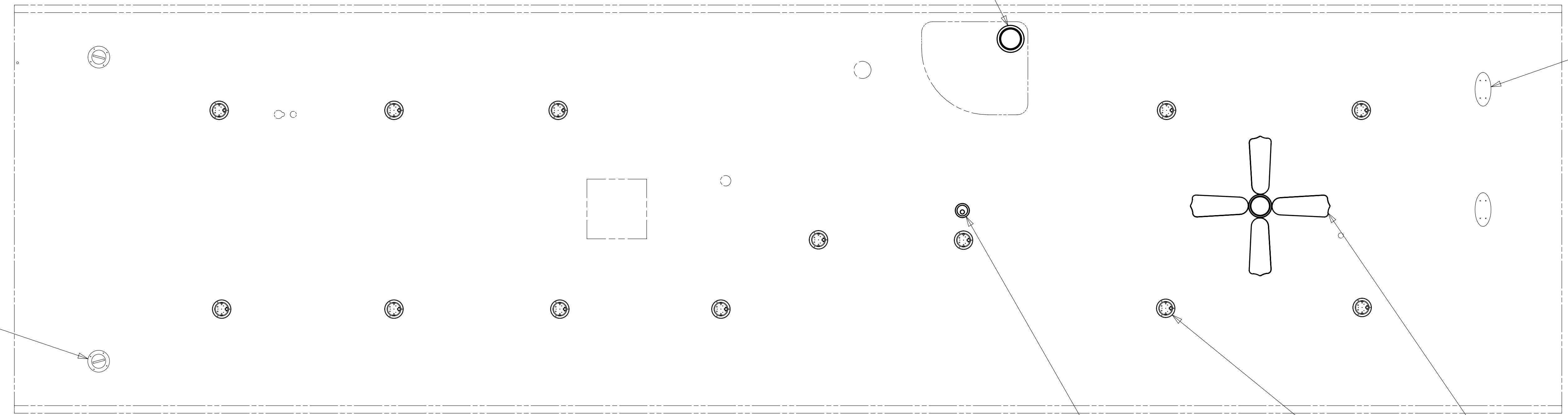
C

B

B

A

A



NOTES:

1 LAMP LOCATED IN SERVICE COMPARTMENT.

FOR ELECTRICAL
TORQUE
SPECIFICATIONS
SEE DWG NO.
128783-01-000

FOR
ELECTRICAL
CALLOUTS
SEE DWG NO.
121339-01-000

265 CODES/STANDARDS-CSA/CMVSS

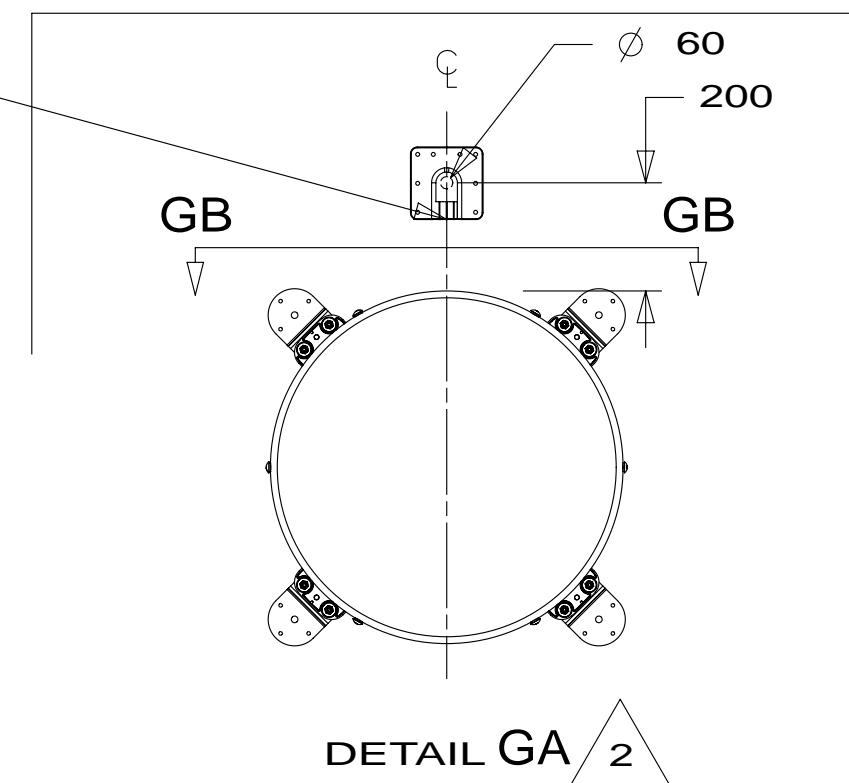
1B1 CODES/STANDARDS USA

1B1 265

FIRST USED	14 J35P	
TITLE:	DO NOT SCALE DRAWING	
	WIRING INSTL-BODY,12V	
SHEET 6	PART NO 185396	REV

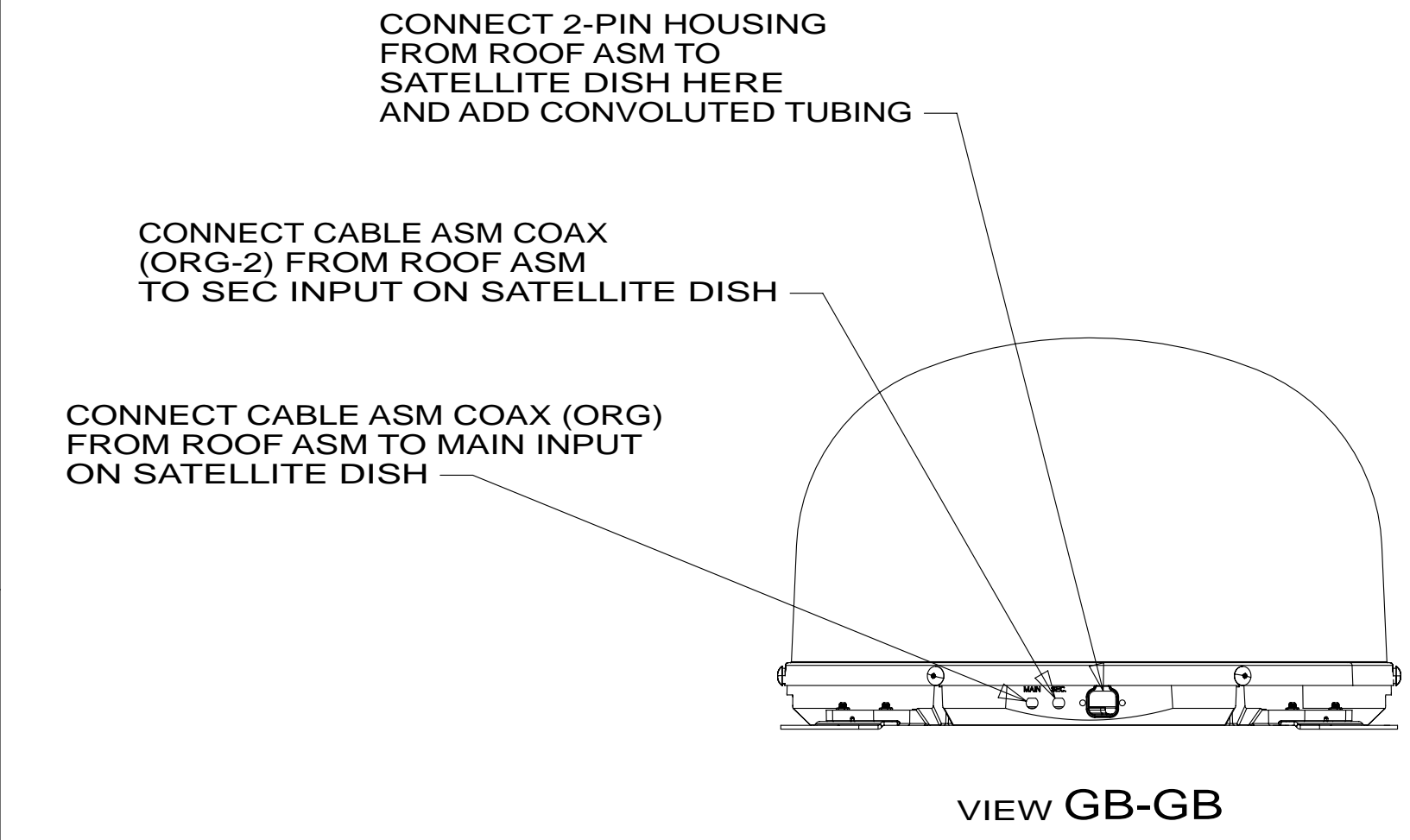
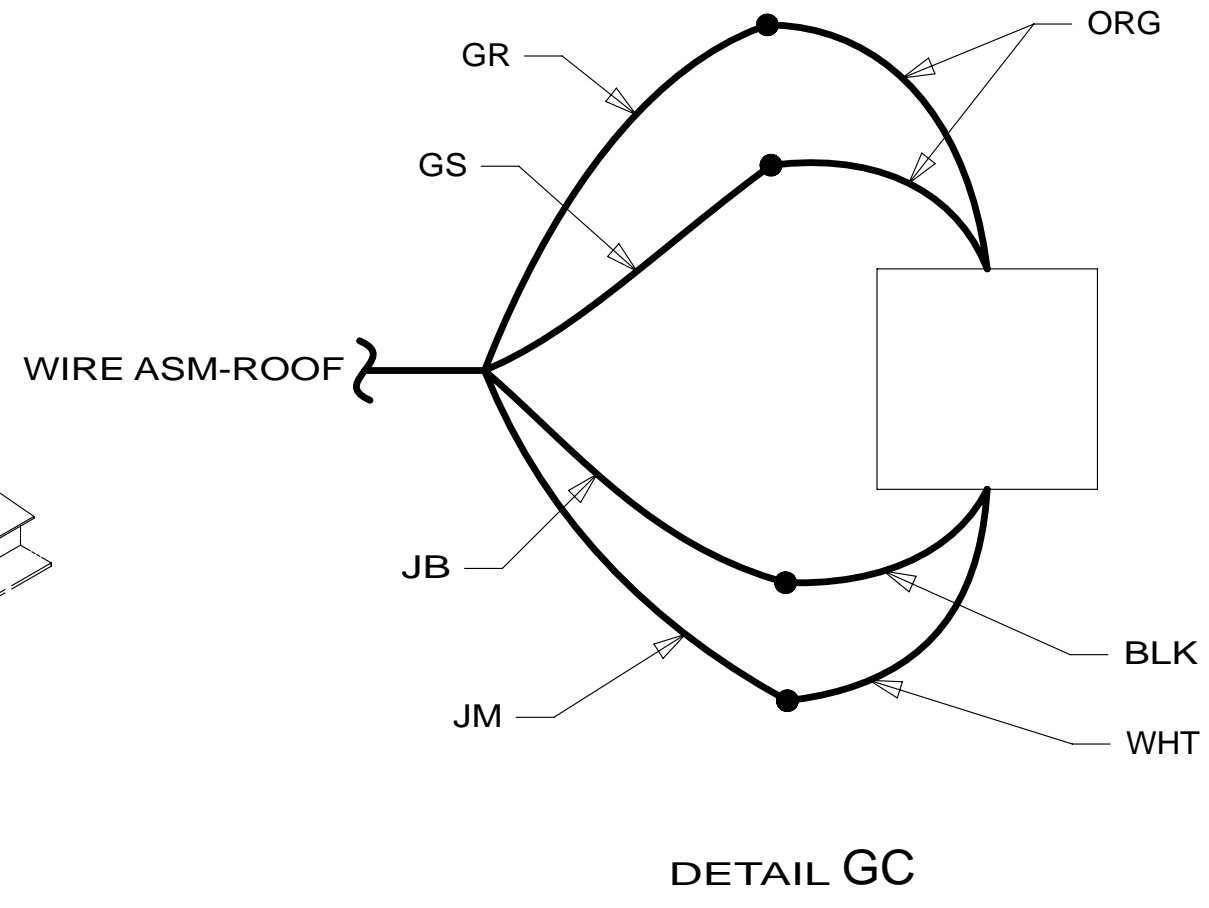
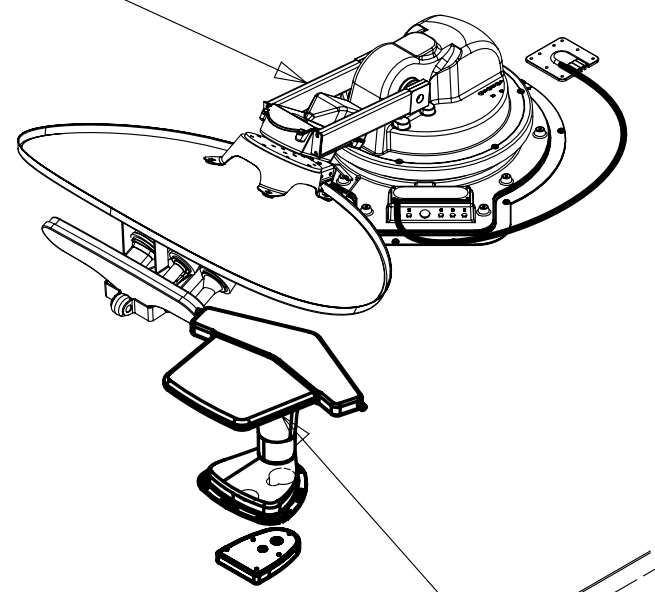
* 185396 * A

THE SATELLITE DISH WIRE CONNECTIONS ARE TO BE PLACED ON THE CENTERLINE OF THE MOTORHOME FACING FORWARD

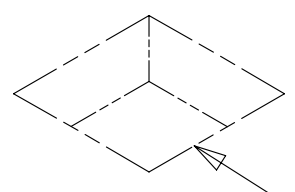
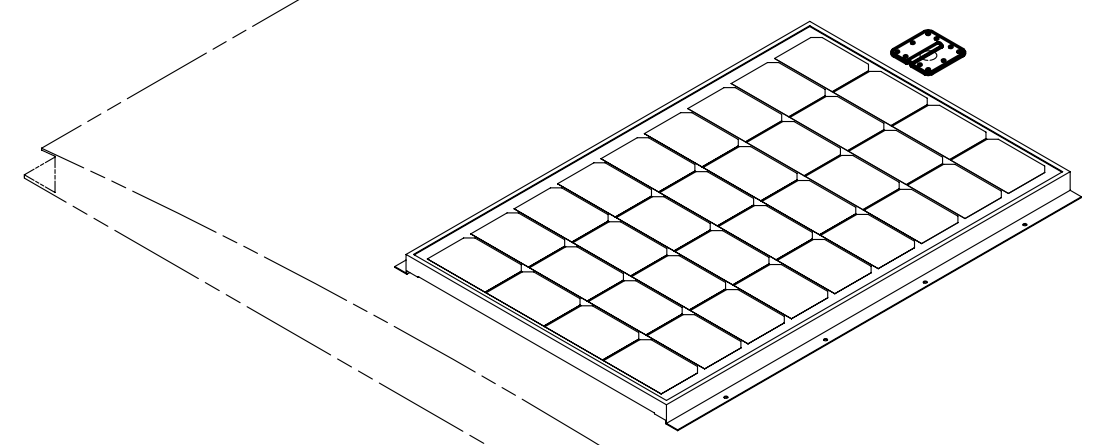
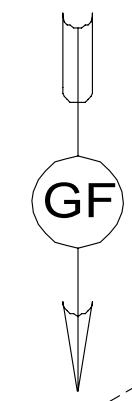


1 783 DA-4
DETAIL GE

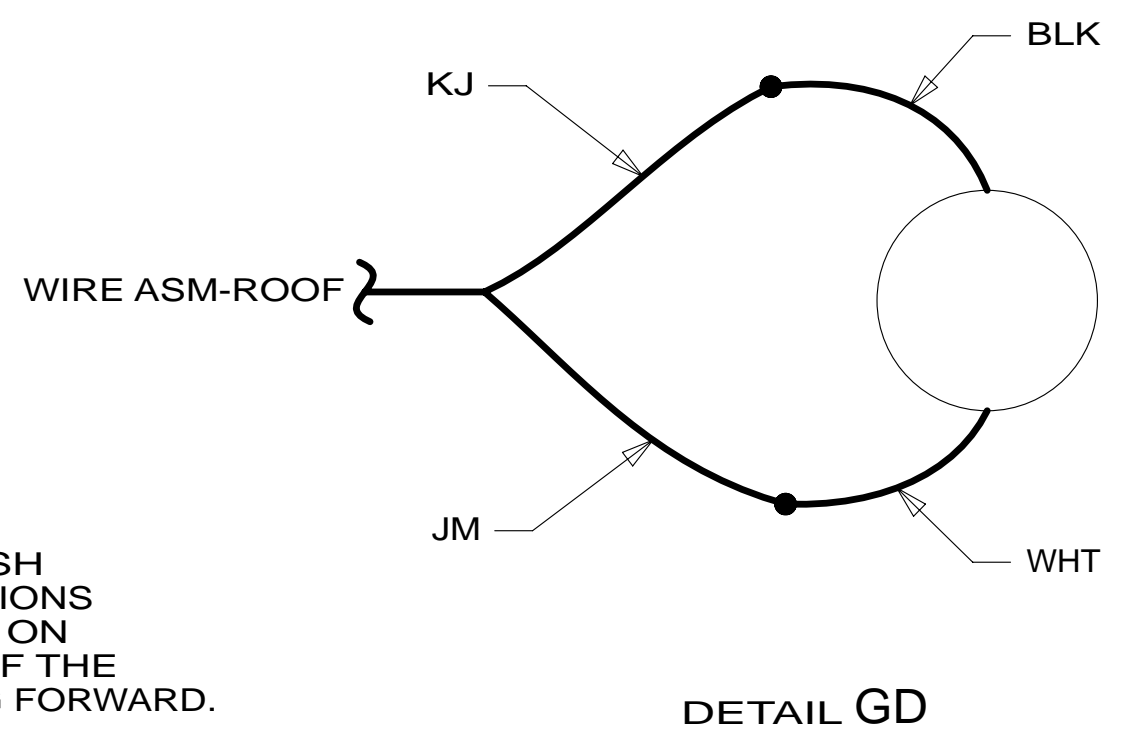
1 48P D1-3
DETAIL GA



VIEW GB-GB



BATH VENT
DETAIL GD



DETAIL GD

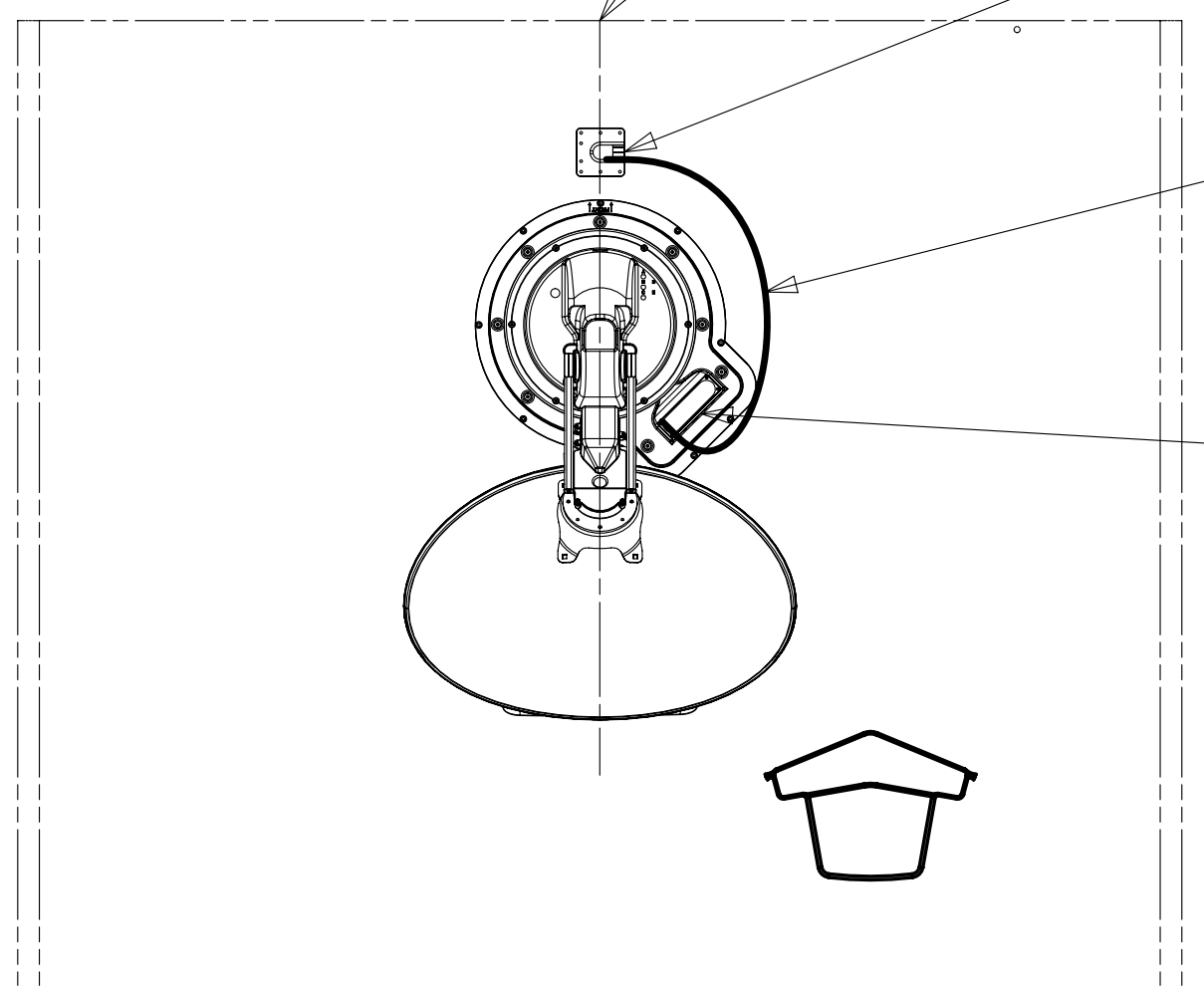
GALLEY VENT
DETAIL GC

THE SATELLITE DISH AND WIRE CONNECTIONS ARE TO BE PLACED ON THE CENTERLINE OF THE MOTORHOME FACING FORWARD.

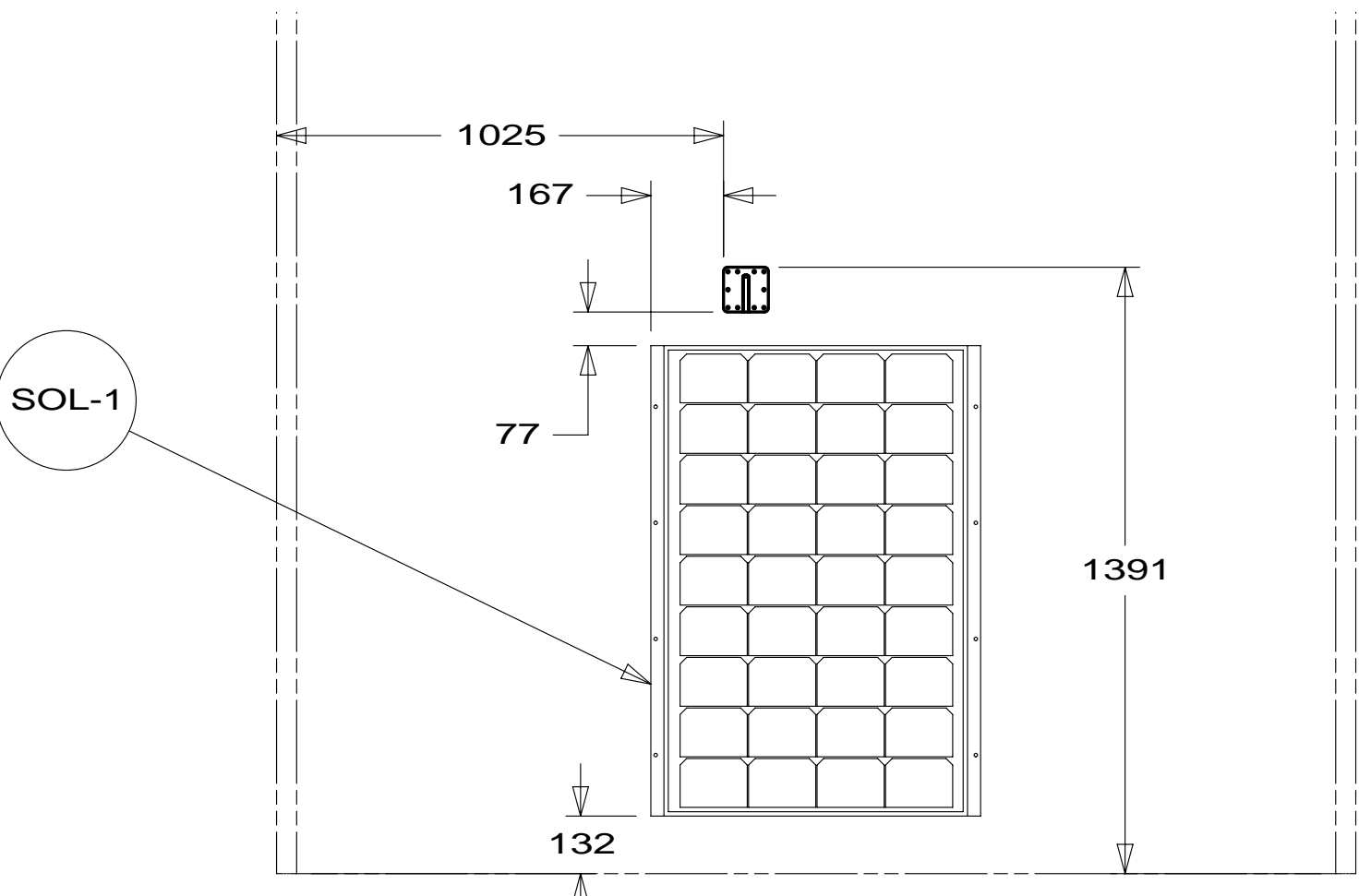
SEPARATE CABLES AND INSTALL WIRE COVER OVER HOLE IN ROOF ASM WITH CABLES EXITING ON PASSENGERS SIDE.

WHEN APPLYING ROOF SEALANT TO SATELLITE DISH, PLACE ROOF SEALANT HERE (APPROXIMATELY 75MM WIDE) AND PUSH THE CABLES INTO THE SEALANT TO STABILIZE THEM.

CONNECT CABLE ASM-COAX FROM ROOF ASM TO COAX CABLES ON SATELLITE DISH AND CONNECT 10' CABLE-DATA FROM ROOF ASM TO DATA CABLE FROM SATELLITE DISH AND PLACE ALL CONNECTIONS BACK INTO ROOF ASM.



DETAIL GE



DETAIL GF

2 REMOVE ALL SHIPPING RESTRAINTS AND INSTALL AS SPECIFIED IN THE INSTALLATION PROCESS.

1 SEE ANTENNA INSTALLATION MANUAL FOR CORRECT INSTALLATION PROCEDURE.

NOTES:

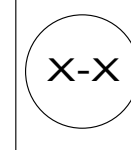
- 783 SATELLITE HD TV SYSTEM AUTOC
- 48P SAT TV SYSTEM IN-MOTION
- 265 CODES/STANDARDS-CSA/CMVSS
- 1B1 CODES/STANDARDS USA

1B1 265

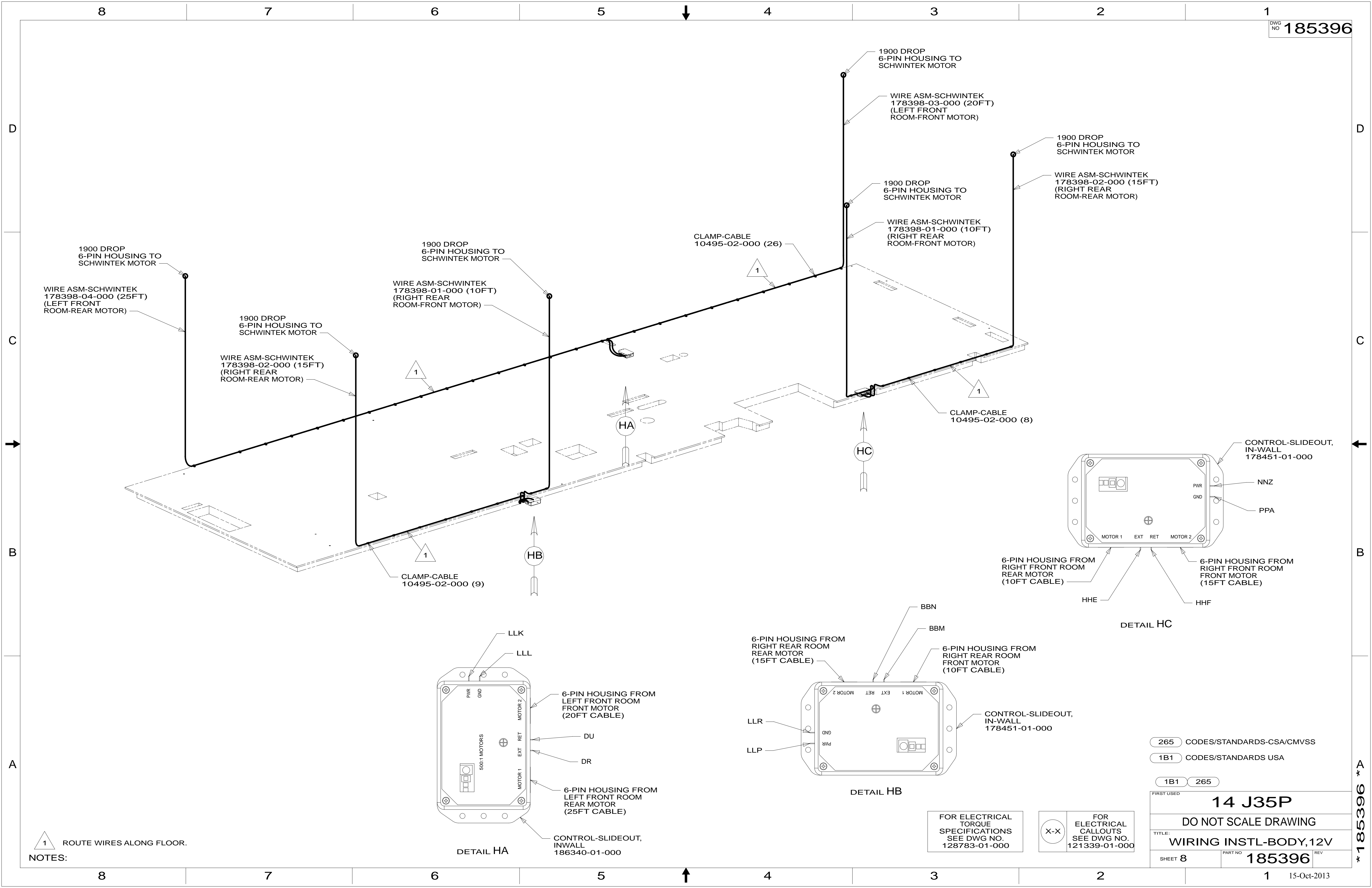
FIRST USED	14 J35P	
DO NOT SCALE DRAWING		
TITLE: WIRING INSTL-BODY, 12V		
SHEET 7	PART NO. 185396	REV

FOR ELECTRICAL TORQUE SPECIFICATIONS SEE DWG NO. 128783-01-000

FOR ELECTRICAL CALLOUTS SEE DWG NO. 121339-01-000



* 185396 * A



1900 DROP
6-PIN HOUSING TO
SCHWINTEK MOTOR

WIRE ASM-SCHWINTEK
178398-04-000 (25FT)
(LEFT FRONT
ROOM-REAR MOTOR)

1900 DROP
6-PIN HOUSING TO
SCHWINTEK MOTOR

WIRE ASM-SCHWINTEK
178398-02-000 (15FT)
(RIGHT REAR
ROOM-REAR MOTOR)

1900 DROP
6-PIN HOUSING TO
SCHWINTEK MOTOR

WIRE ASM-SCHWINTEK
178398-01-000 (10FT)
(RIGHT REAR
ROOM-FRONT MOTOR)

CLAMP-CABLE
10495-02-000 (26)

1900 DROP
6-PIN HOUSING TO
SCHWINTEK MOTOR

WIRE ASM-SCHWINTEK
178398-03-000 (20FT)
(LEFT FRONT
ROOM-FRONT MOTOR)

1900 DROP
6-PIN HOUSING TO
SCHWINTEK MOTOR

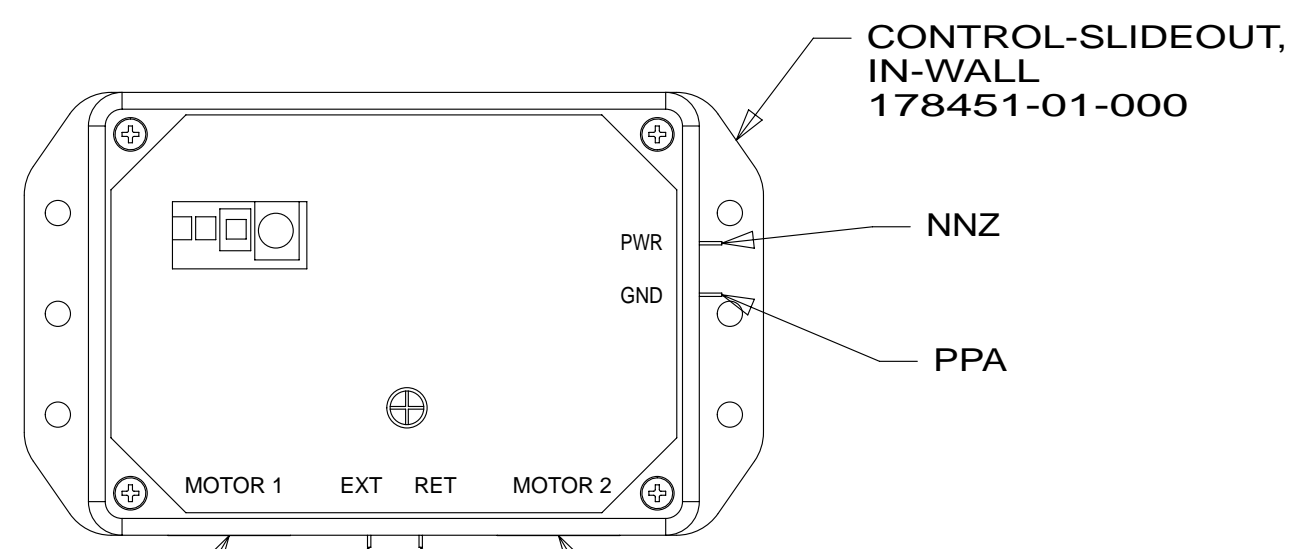
WIRE ASM-SCHWINTEK
178398-01-000 (10FT)
(RIGHT REAR
ROOM-FRONT MOTOR)

1900 DROP
6-PIN HOUSING TO
SCHWINTEK MOTOR

WIRE ASM-SCHWINTEK
178398-02-000 (15FT)
(RIGHT REAR
ROOM-REAR MOTOR)

CLAMP-CABLE
10495-02-000 (8)

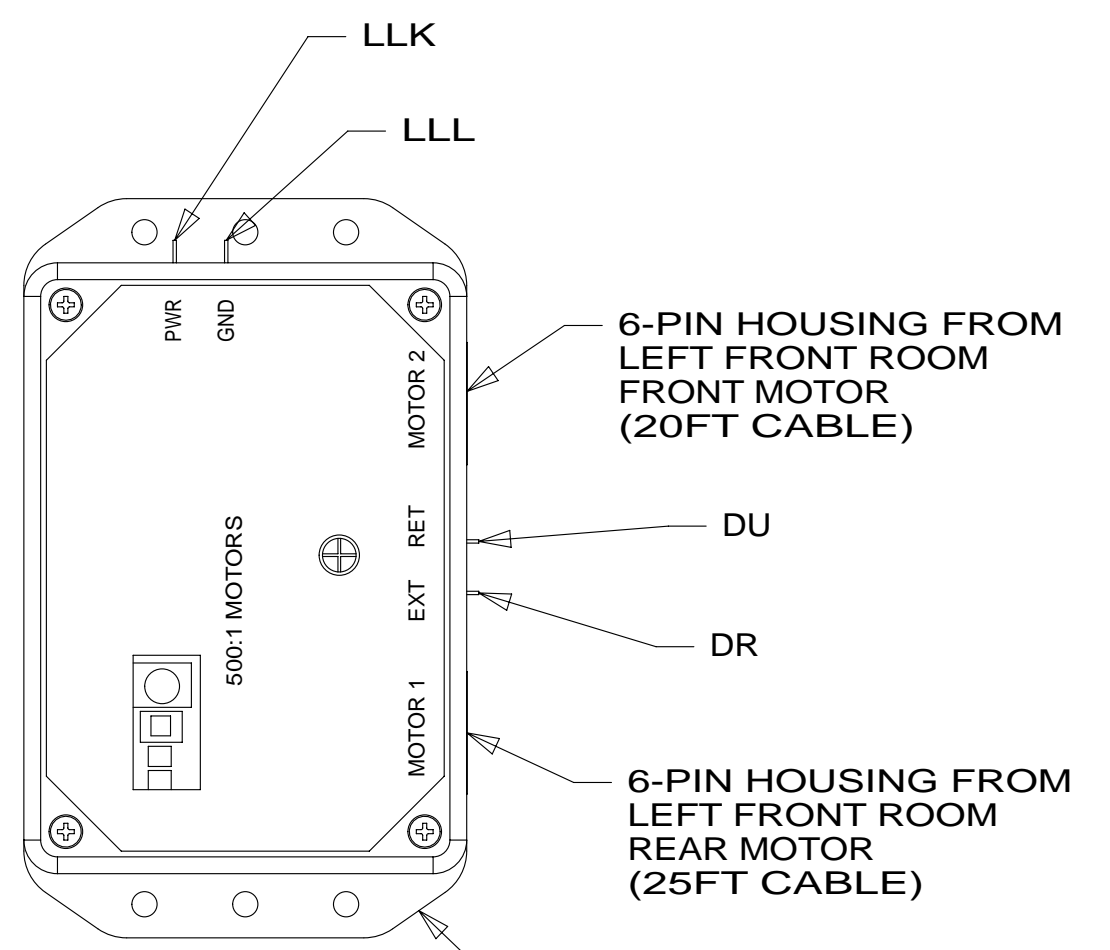
CLAMP-CABLE
10495-02-000 (9)



6-PIN HOUSING FROM
RIGHT FRONT ROOM
REAR MOTOR
(10FT CABLE)

6-PIN HOUSING FROM
RIGHT FRONT ROOM
FRONT MOTOR
(15FT CABLE)

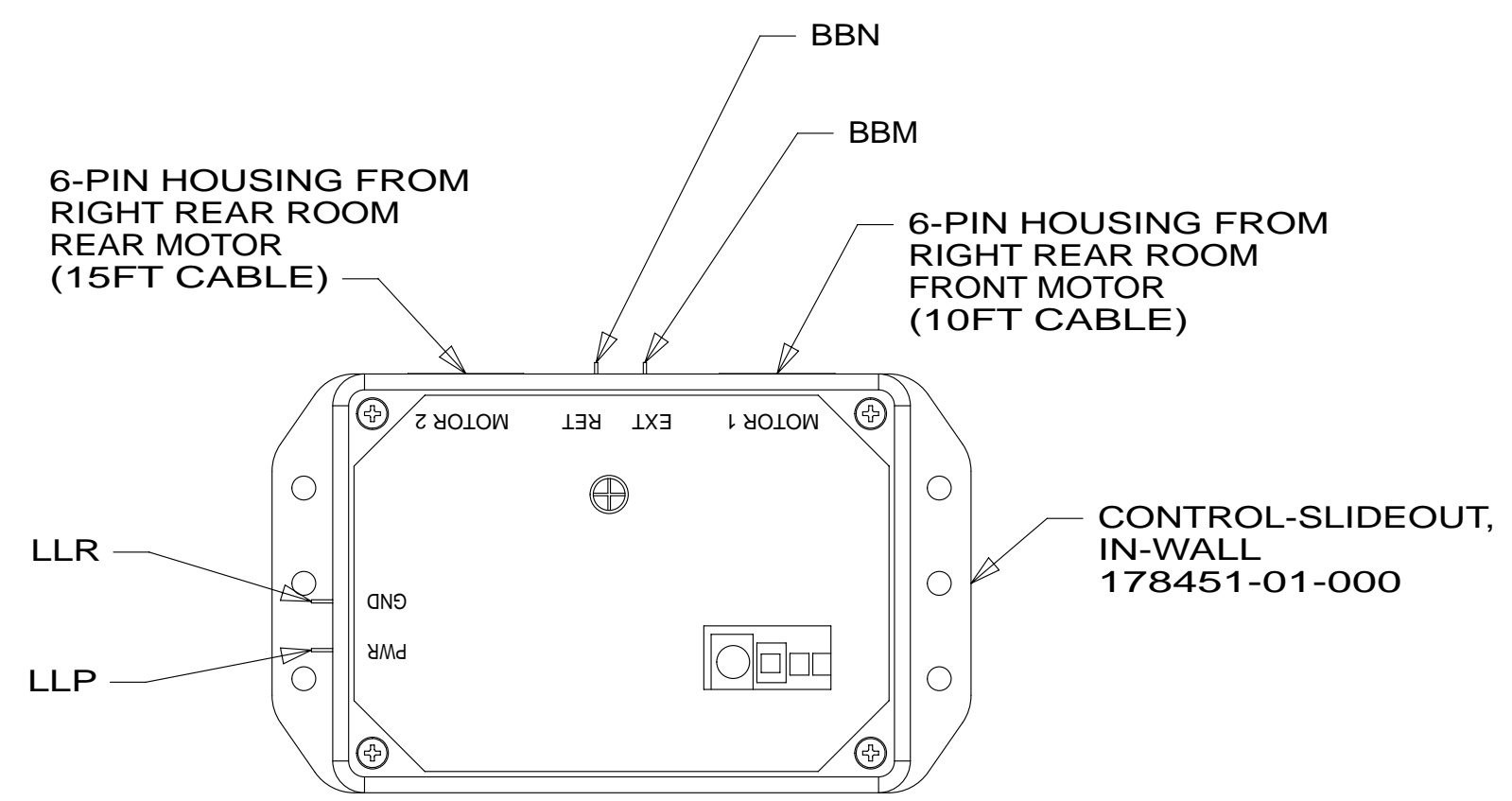
DETAIL HC



6-PIN HOUSING FROM
LEFT FRONT ROOM
FRONT MOTOR
(20FT CABLE)

6-PIN HOUSING FROM
LEFT FRONT ROOM
REAR MOTOR
(25FT CABLE)

DETAIL HA



6-PIN HOUSING FROM
RIGHT REAR ROOM
REAR MOTOR
(15FT CABLE)

6-PIN HOUSING FROM
RIGHT REAR ROOM
FRONT MOTOR
(10FT CABLE)

DETAIL HB

1 ROUTE WIRES ALONG FLOOR.

FOR ELECTRICAL
TORQUE
SPECIFICATIONS
SEE DWG NO.
128783-01-000

FOR ELECTRICAL
CALLOUTS
SEE DWG NO.
121339-01-000

265 CODES/STANDARDS-CSA/CMVSS

1B1 CODES/STANDARDS USA

1B1 265

FIRST USED
14 J35P

DO NOT SCALE DRAWING

TITLE:
WIRING INSTL-BODY,12V

SHEET 8 PART NO **185396** REV