



DANGER

Danger of electrical shock, burns or death. Always remove all power sources before attempting any repair, service or diagnostic work. Power can be present from shore power, generator, inverter or battery. All power sources must be disabled and secured before performing any service.

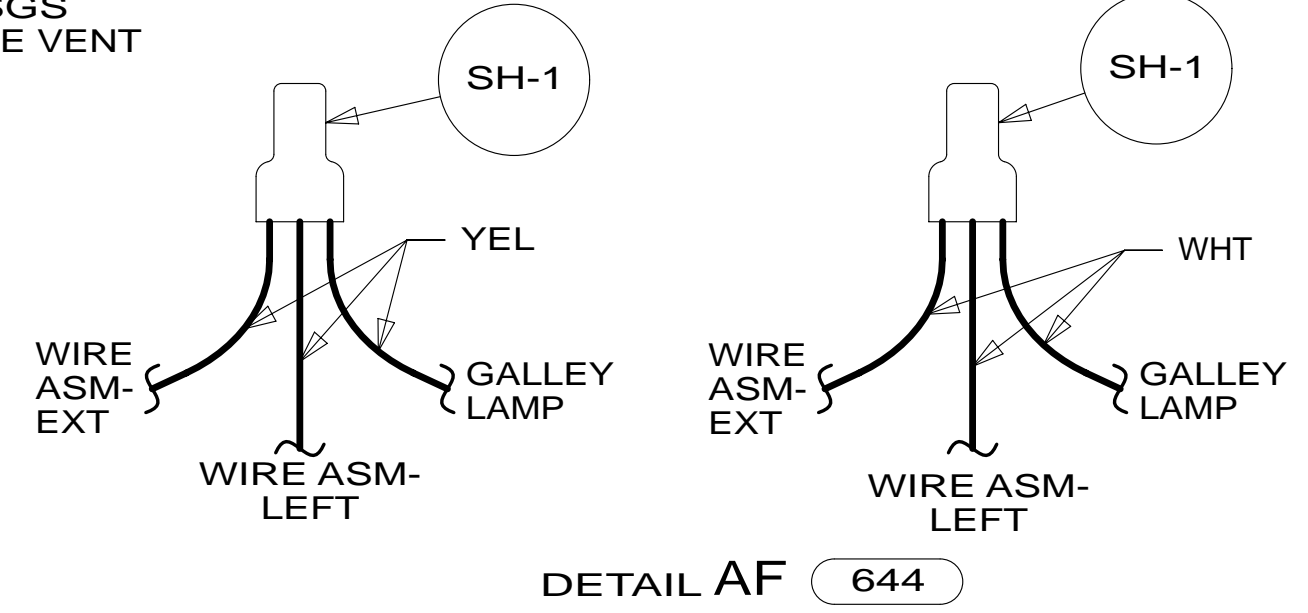
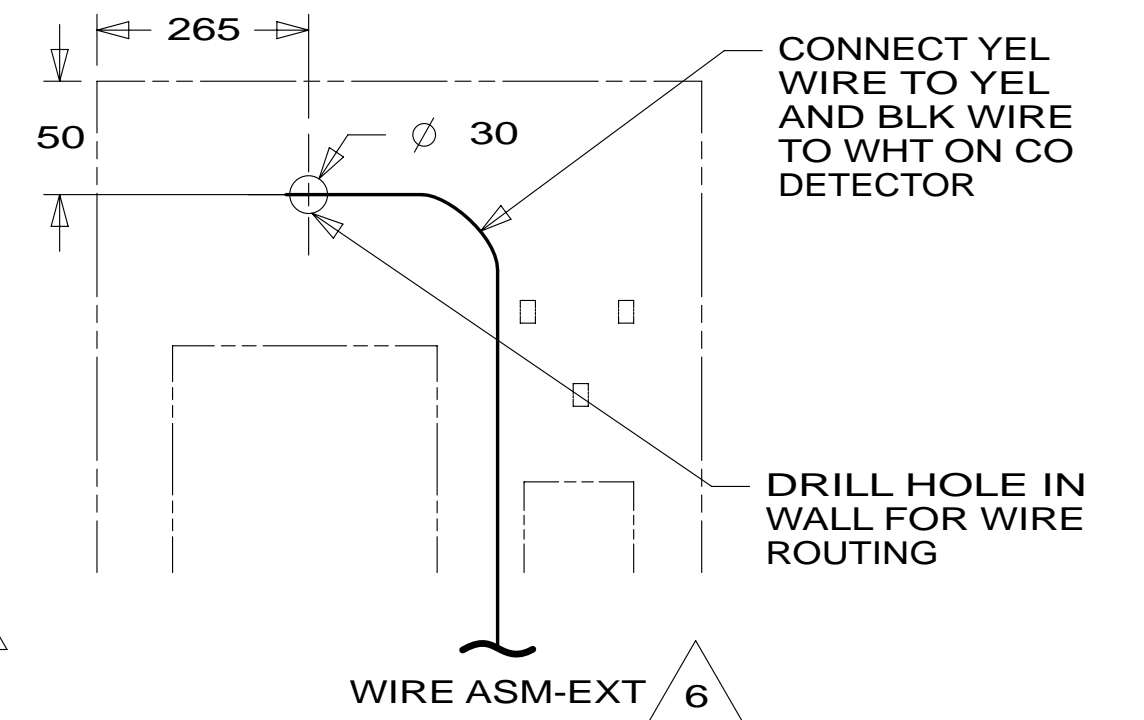
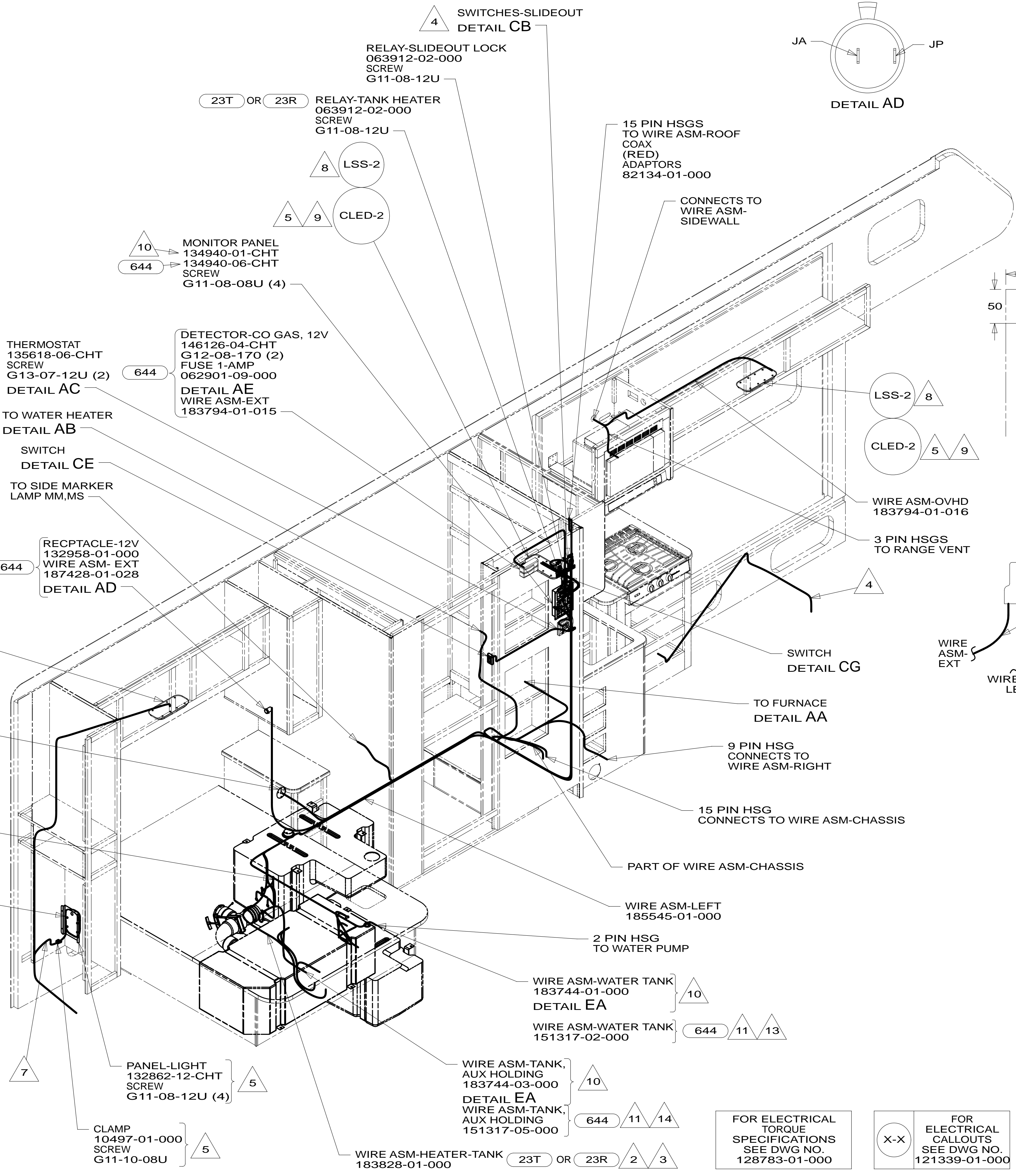
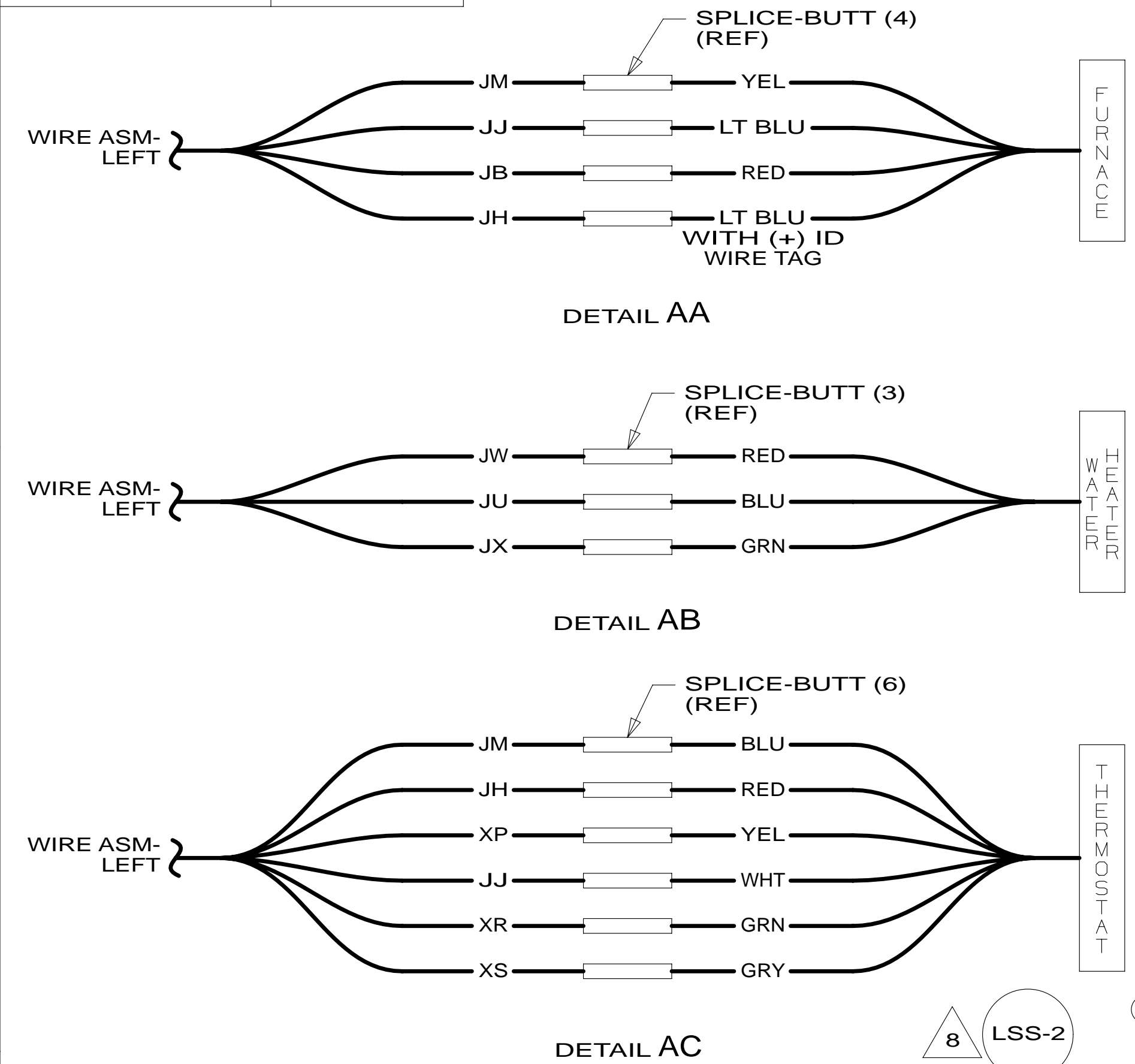


CAUTION

If you lack the skills, tools or equipment to perform diagnostic or repair work leave such work to an authorized Winnebago Industries dealer or other qualified shop.

DRAWING NO.	MODEL
185345-01	331H
185345-02	331HP

RELEASE	REV DATE	DWG NO	185345
REV ZONE	REVISION RECORD	DATE	DTR-ORIG



- 14 MARK WIRES WITH WRAP OF ORG TAPE.
- 13 MARK WIRES WITH WRAP OF RED TAPE.
- 12 MARK WIRES WITH WRAP OF BLU TAPE.
- 11 CUT 2-PIN HSG OFF ASSEMBLY, REPLACE WITH BUTT SPLICE 031876-01-000 (2). CONNECT BLK WIRE TO WHT AND BLK/WHT WIRE TO YEL.
- 10 NOT USED WITH 644
- 9 USED WITH 644
- 8 USED WITH 331H.
- 7 WIRING IS PART OF WIRE ASM-CHASSIS.
- 6 WIRE ROUTED TO GALLEY UNDER CABT LIGHT. SEE DETAIL AF FOR CONNECTION.
- 5 USED WITH 331HP.
- 4 SLIDEOUT WIRING IS PART OF WIRE ASM-CHASSIS.
- 3 SEE DRAINAGE SYSTEM INSTL FOR ADDITIONAL INFORMATION.
- 2 ROUTE WIRE ALONG DRAINAGE PIPE & CONNECT TO PIPE WITH TIE-WIRE 8343-04-000.

1. AT MINIMUM ALL WIRES TO BE SUPPORTED AND SECURED PER CODE REQUIREMENTS. USE CLAMP 10495 OR 10497 OR WIRE TIE 8343 OR 108046 AND SCREW G67-XX-XXX OR G56-XX-XXX AS APPROPRIATE FOR INSTALLATION.

NOTES:

- 644 GREAT ALASKAN RENTAL PACKAGE
- 23R DRAINAGE SYSTEM/HEAT-PREP
- 23T DRAINAGE SYSTEM-HEATED
- 265 CODES/STANDARDS-CSA/CMVSS
- 1B1 CODES/STANDARDS USA

1B1 265

WINNEBAGO

COPYRIGHT 2013 WINNEBAGO INDUSTRIES, INC.

DTR	ORIG. DATE
CHKR	ALL DIMENSIONS ARE IN MILLIMETERS
P.E.	FIRST USED
M.E.	
DSNR	14 331H

UNSPECIFIED TOLERANCES ARE:

WHOLE DIM (X)	: 3
ONE-PLACE (X.X)	: 1.5
TWO-PLACE (X.XX)	: 0.50
ANGLE	: 1°

THIRD ANGLE PROJECTION

DO NOT SCALE DRAWING REFER TO ES0018 FOR FASTENER TIGHTENING GUIDELINES

TITLE: **WIRING INSTL-BODY, 12V**

SHEET 1 OF 5 PART NO. **185345** REV

REF: 1 31-Dec-2013

FOR ELECTRICAL TORQUE SPECIFICATIONS SEE DWG NO. 128783-01-000

FOR ELECTRICAL CALLOUTS SEE DWG NO. 121339-01-000

* 185345 *

8 7 6 5 4 3 2 1

D

D

C

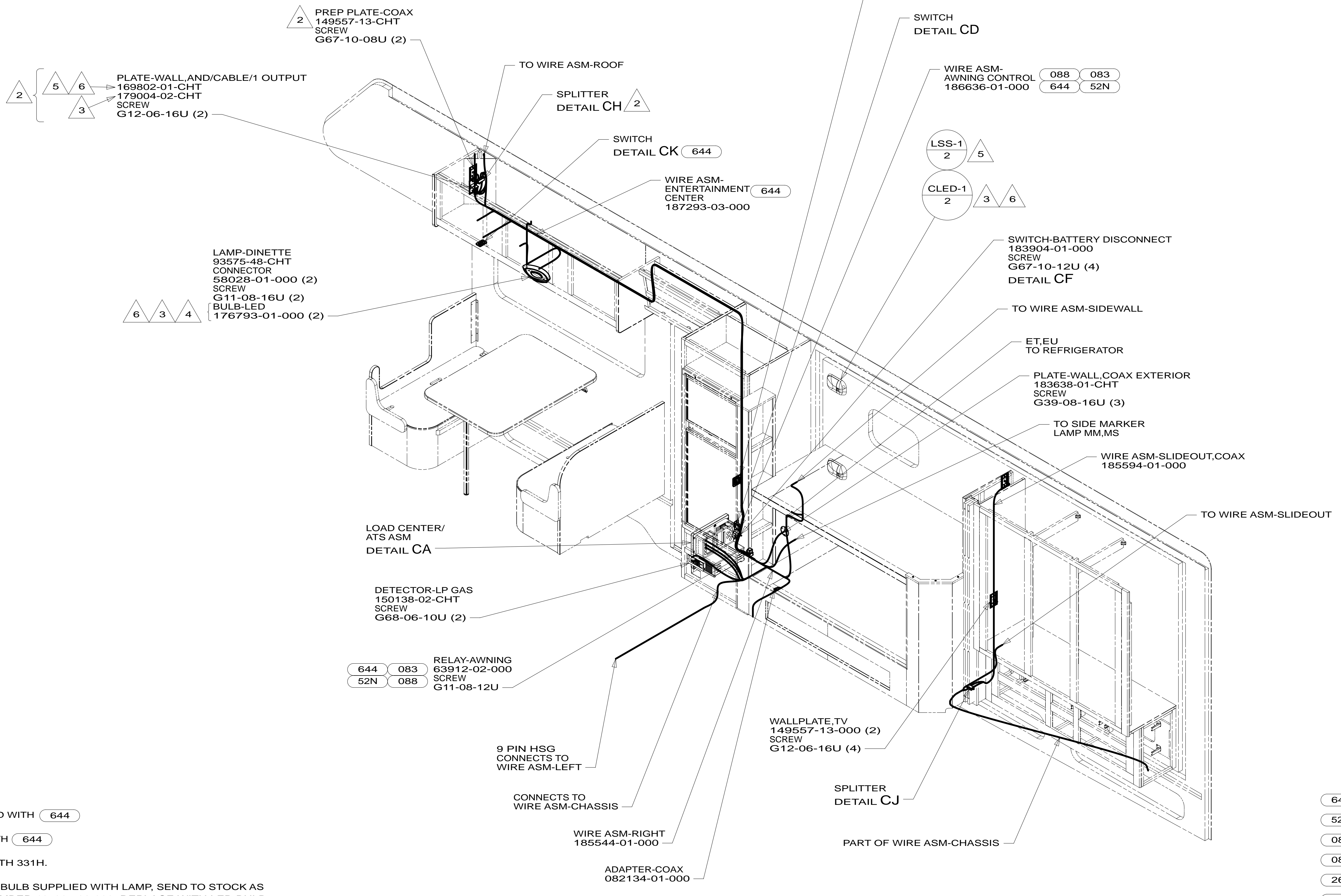
C

B

B

A

A



- 7 NOT USED WITH 644
- 6 USED WITH 644
- 5 USED WITH 331H.
- 4 REMOVE BULB SUPPLIED WITH LAMP, SEND TO STOCK AS PART NUMBER 117805-02-000. REPLACE WITH LED BULB.
- 3 USED WITH 331HP.
- 2 SEE WIRING INSTL-TV/DVD FOR ADDITIONAL INFORMATION.

1. AT MINIMUM ALL WIRES TO BE SUPPORTED AND SECURED PER CODE REQUIREMENTS. USE CLAMP 10495 OR 10497 OR WIRE TIE 8343 OR 108046 AND SCREW G67-XX-XXX OR G56-XX-XXX AS APPROPRIATE FOR INSTALLATION.

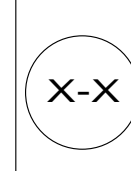
NOTES:

- 644 GREAT ALASKAN RENTAL PACKAGE
- 52N AWNING - PATIO, ELECTRIC
- 083 CONVENIENCE & APPEAR PK-WHTE
- 088 CONVENIENCE & APPEAR PK-TAUP
- 265 CODES/STANDARDS-CSA/CMVSS
- 1B1 CODES/STANDARDS USA

FIRST USED		14 331H	
DO NOT SCALE DRAWING			
TITLE: WIRING INSTL-BODY,12V			
SHEET 2	PART NO	185345	REV
		1	31-Dec-2013

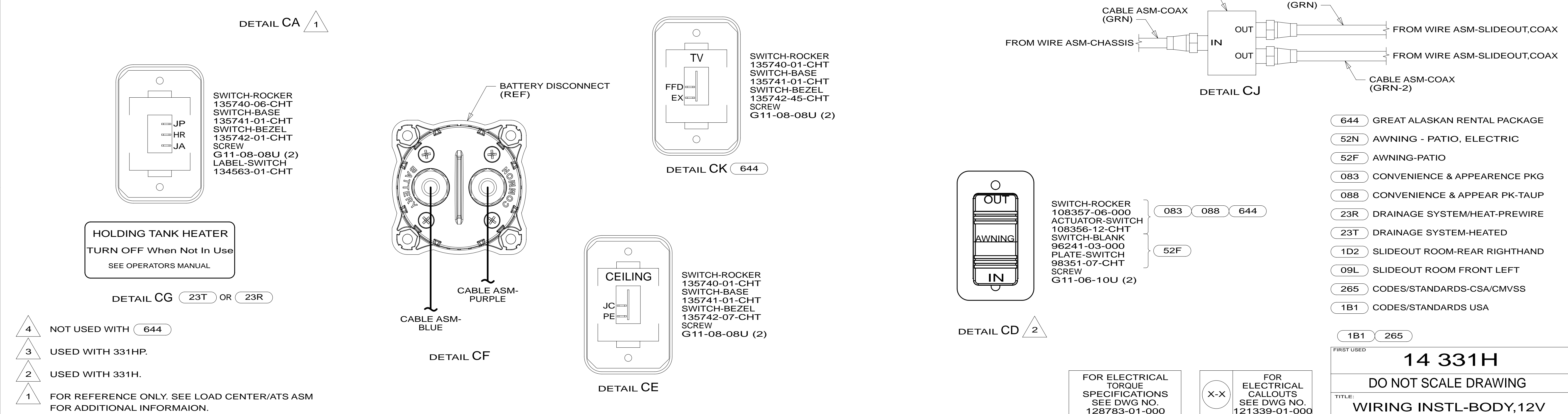
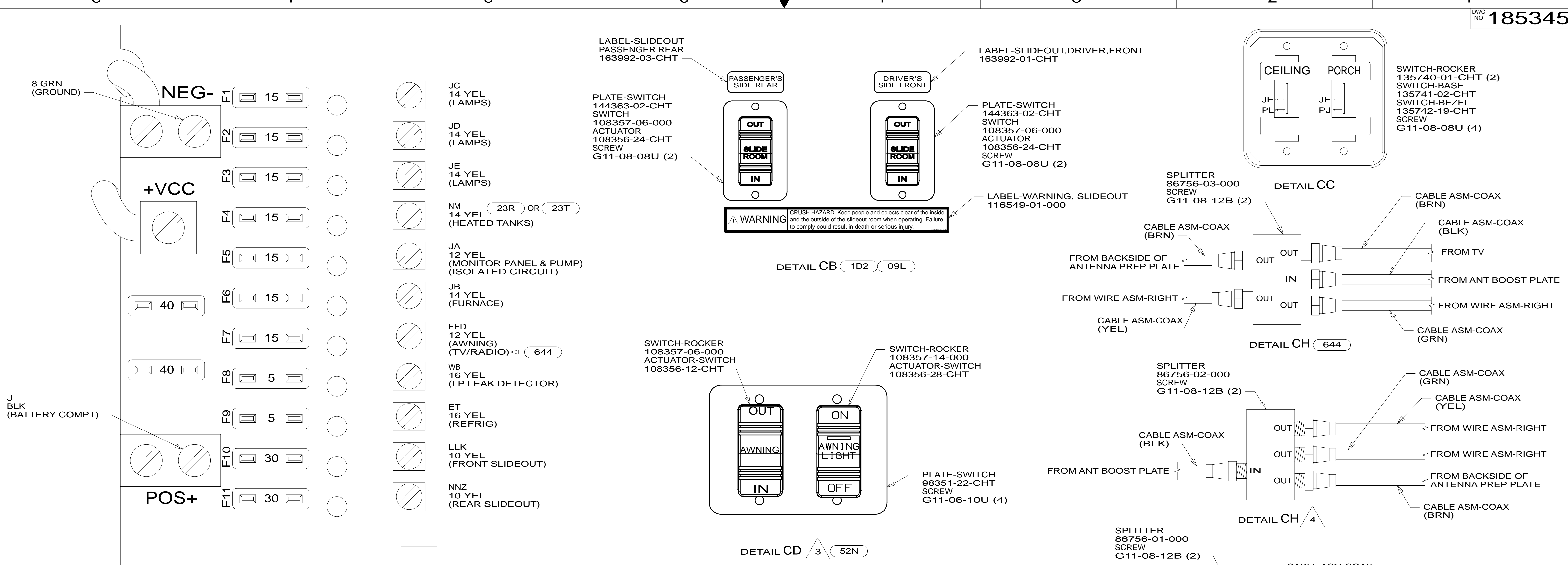
FOR ELECTRICAL TORQUE SPECIFICATIONS SEE DWG NO. 128783-01-000

FOR ELECTRICAL CALLOUTS SEE DWG NO. 121339-01-000



* 185345 * A

8 7 6 5 4 3 2 1



NOTES:

- 4 NOT USED WITH 644
- 3 USED WITH 331HP.
- 2 USED WITH 331H.
- 1 FOR REFERENCE ONLY. SEE LOAD CENTER/ATS ASM FOR ADDITIONAL INFORMATION.

FOR ELECTRICAL TORQUE SPECIFICATIONS SEE DWG NO. 128783-01-000

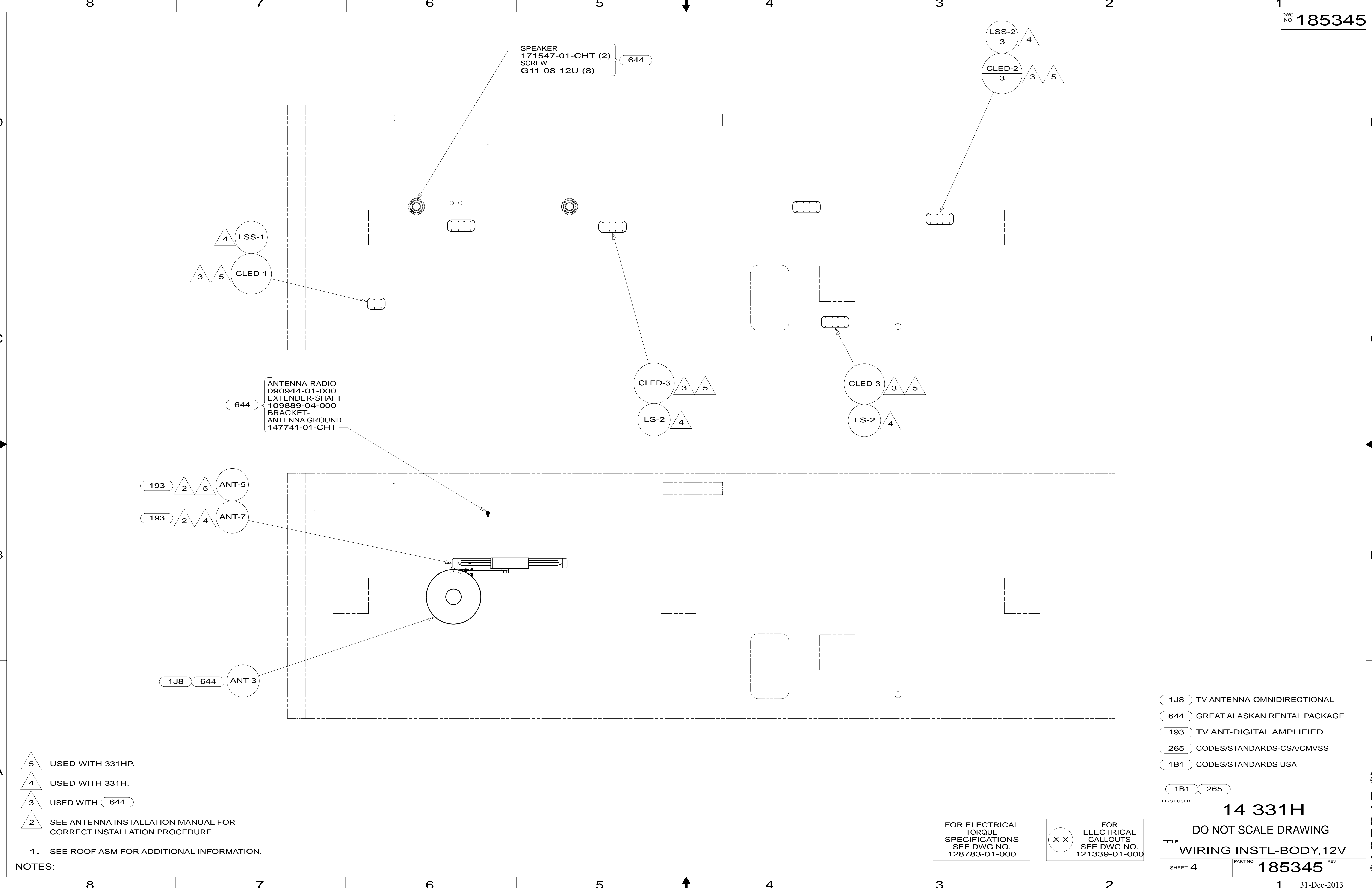
X-X

FOR ELECTRICAL CALLOUTS SEE DWG NO. 121339-01-000

- 644 GREAT ALASKAN RENTAL PACKAGE
- 52N AWNING - PATIO, ELECTRIC
- 52F AWNING-PATIO
- 083 CONVENIENCE & APPEARANCE PKG
- 088 CONVENIENCE & APPEAR PK-TAUP
- 23R DRAINAGE SYSTEM/HEAT-PREWIRE
- 23T DRAINAGE SYSTEM-HEATED
- 1D2 SLIDEOUT ROOM-REAR RIGHTHAND
- 09L SLIDEOUT ROOM FRONT LEFT
- 265 CODES/STANDARDS-CSA/CMVSS
- 1B1 CODES/STANDARDS USA

FIRST USED	14 331H
TITLE	DO NOT SCALE DRAWING
WIRING INSTL-BODY, 12V	
SHEET 3	PART NO 185345 REV
31-Dec-2013	

* 185345 * A



- 5 USED WITH 331HP.
- 4 USED WITH 331H.
- 3 USED WITH 644
- 2 SEE ANTENNA INSTALLATION MANUAL FOR CORRECT INSTALLATION PROCEDURE.

NOTES:
1. SEE ROOF ASM FOR ADDITIONAL INFORMATION.

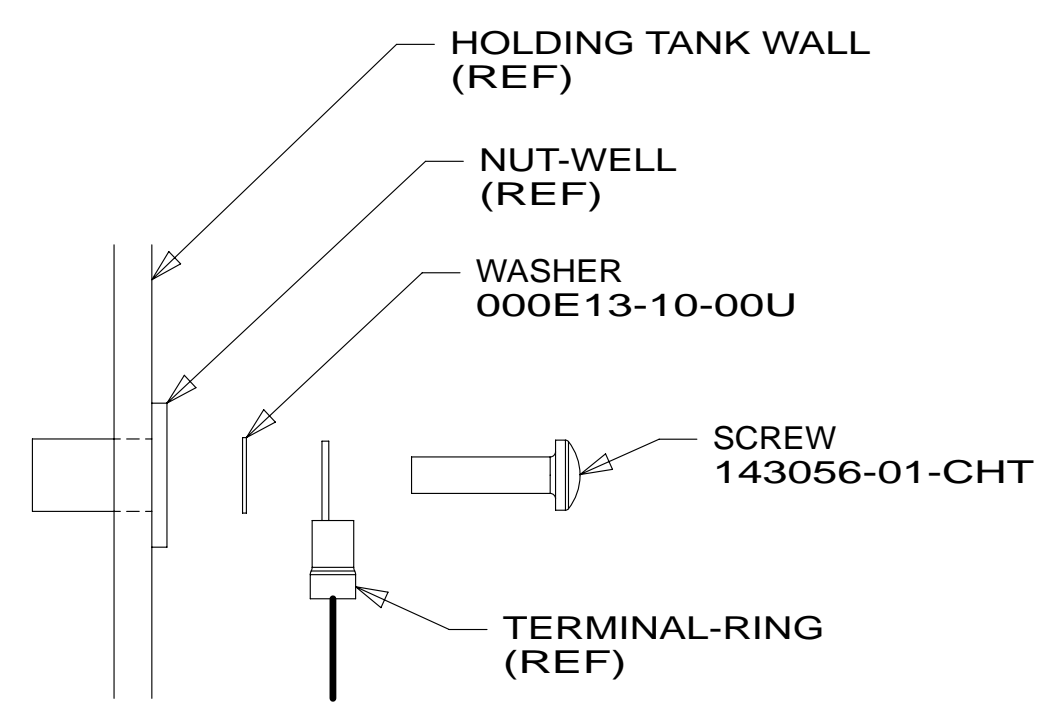
- 1J8 TV ANTENNA-OMNIDIRECTIONAL
- 644 GREAT ALASKAN RENTAL PACKAGE
- 193 TV ANT-DIGITAL AMPLIFIED
- 265 CODES/STANDARDS-CSA/CMVSS
- 1B1 CODES/STANDARDS USA

FIRST USED	14 331H	
DO NOT SCALE DRAWING		
TITLE:	WIRING INSTL-BODY, 12V	
SHEET 4	PART NO. 185345	REV

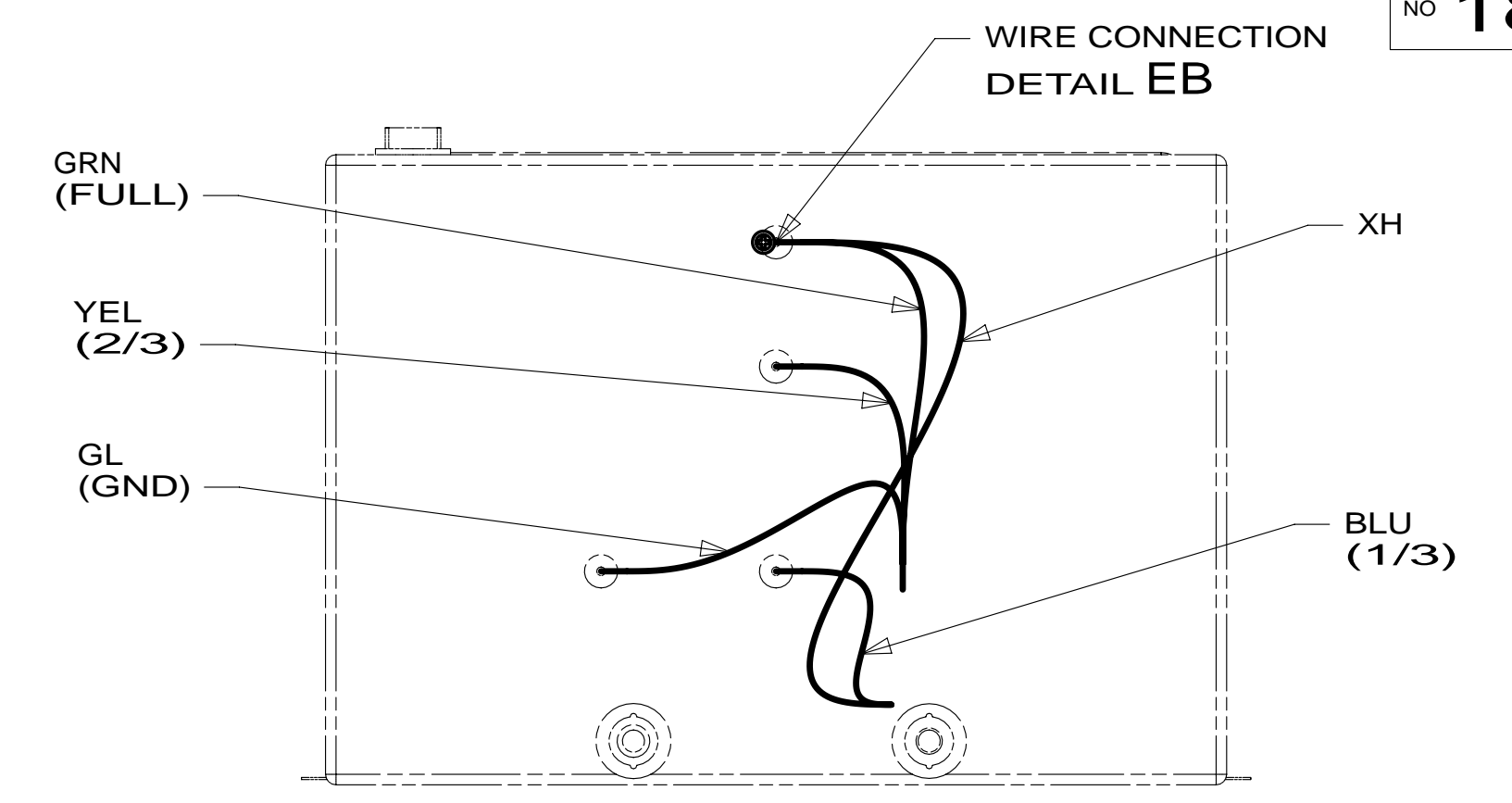
FOR ELECTRICAL TORQUE SPECIFICATIONS SEE DWG NO. 128783-01-000

FOR ELECTRICAL CALLOUTS SEE DWG NO. 121339-01-000

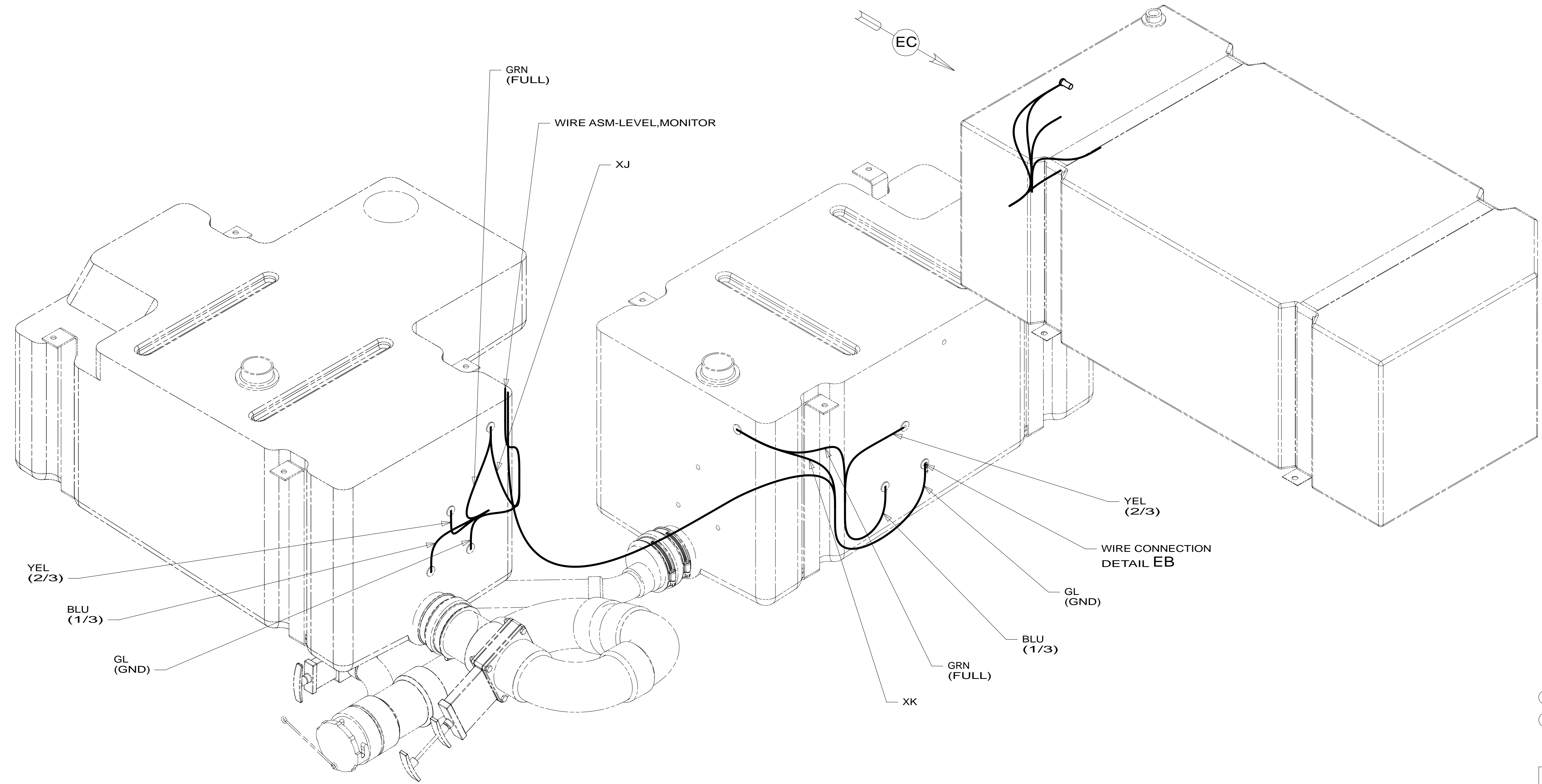
* 185345 * A



DETAIL EB 1



VIEW EC



DETAIL EA

1 TYPICAL WIRE ATTACHMENT AT ALL LEVEL PROBES (4 EACH) FOR WATER, MAIN, AND AUX HOLDING TANKS.

NOTES:

- 265 CODES/STANDARDS-CSA/CMVSS
- 1B1 CODES/STANDARDS USA
- 1B1 265

FOR ELECTRICAL TORQUE SPECIFICATIONS SEE DWG NO. 128783-01-000

X-X FOR ELECTRICAL CALLOUTS SEE DWG NO. 121339-01-000

FIRST USED	
14 331H	
DO NOT SCALE DRAWING	
TITLE: WIRING INSTL-BODY,12V	
SHEET 5	PART NO 185345 REV

* 185345 * A