



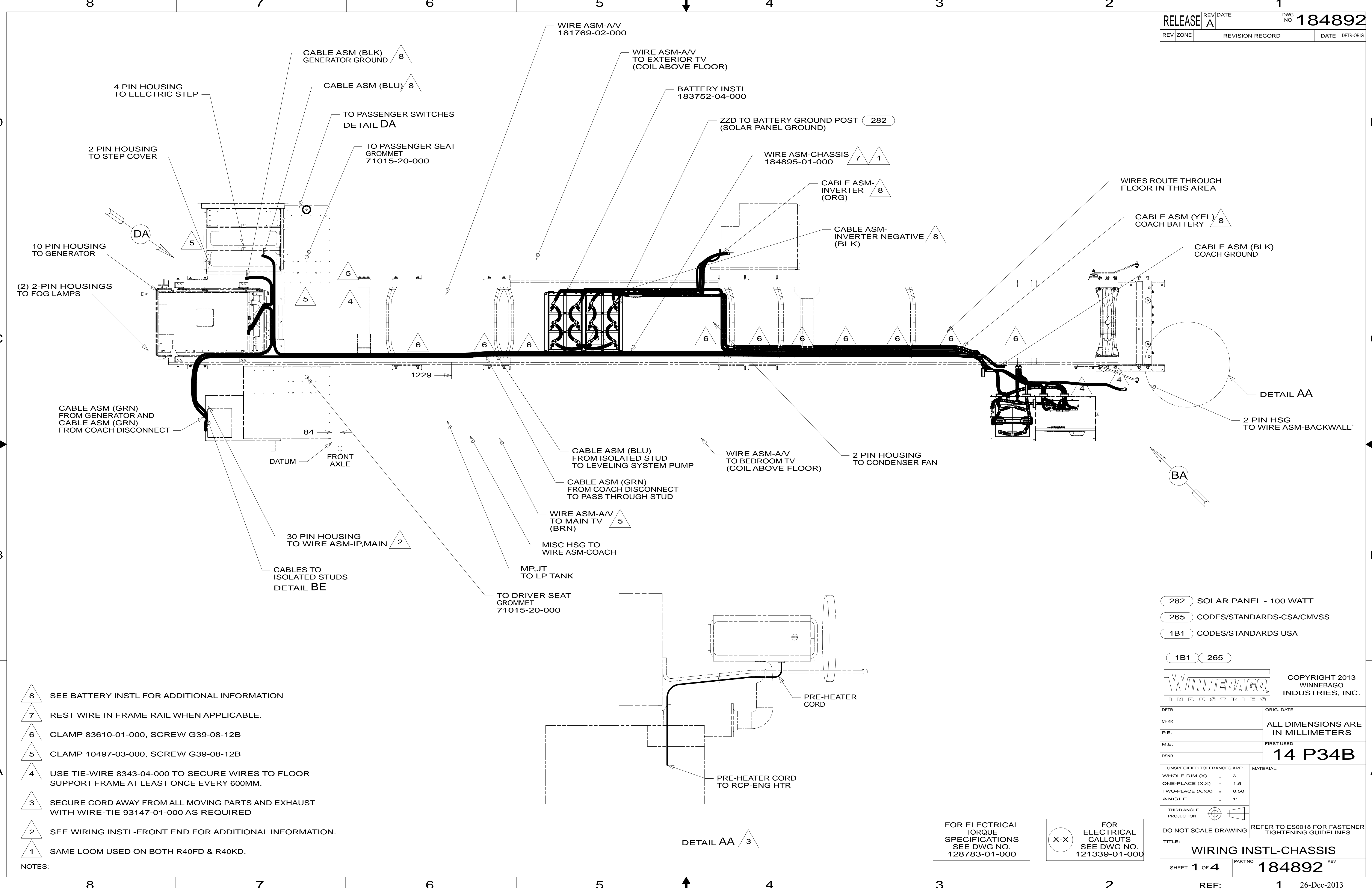
DANGER

Danger of electrical shock, burns or death. Always remove all power sources before attempting any repair, service or diagnostic work. Power can be present from shore power, generator, inverter or battery. All power sources must be disabled and secured before performing any service.



CAUTION

If you lack the skills, tools or equipment to perform diagnostic or repair work leave such work to an authorized Winnebago Industries dealer or other qualified shop.



- NOTES:
- 8 SEE BATTERY INSTL FOR ADDITIONAL INFORMATION
 - 7 REST WIRE IN FRAME RAIL WHEN APPLICABLE.
 - 6 CLAMP 83610-01-000, SCREW G39-08-12B
 - 5 CLAMP 10497-03-000, SCREW G39-08-12B
 - 4 USE TIE-WIRE 8343-04-000 TO SECURE WIRES TO FLOOR SUPPORT FRAME AT LEAST ONCE EVERY 600MM.
 - 3 SECURE CORD AWAY FROM ALL MOVING PARTS AND EXHAUST WITH WIRE-TIE 93147-01-000 AS REQUIRED
 - 2 SEE WIRING INSTL-FRONT END FOR ADDITIONAL INFORMATION.
 - 1 SAME LOOM USED ON BOTH R40FD & R40KD.

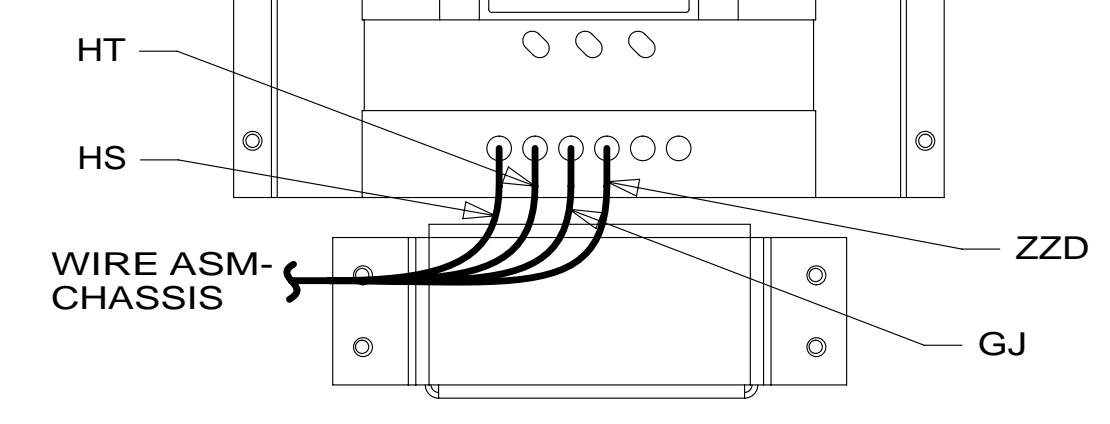
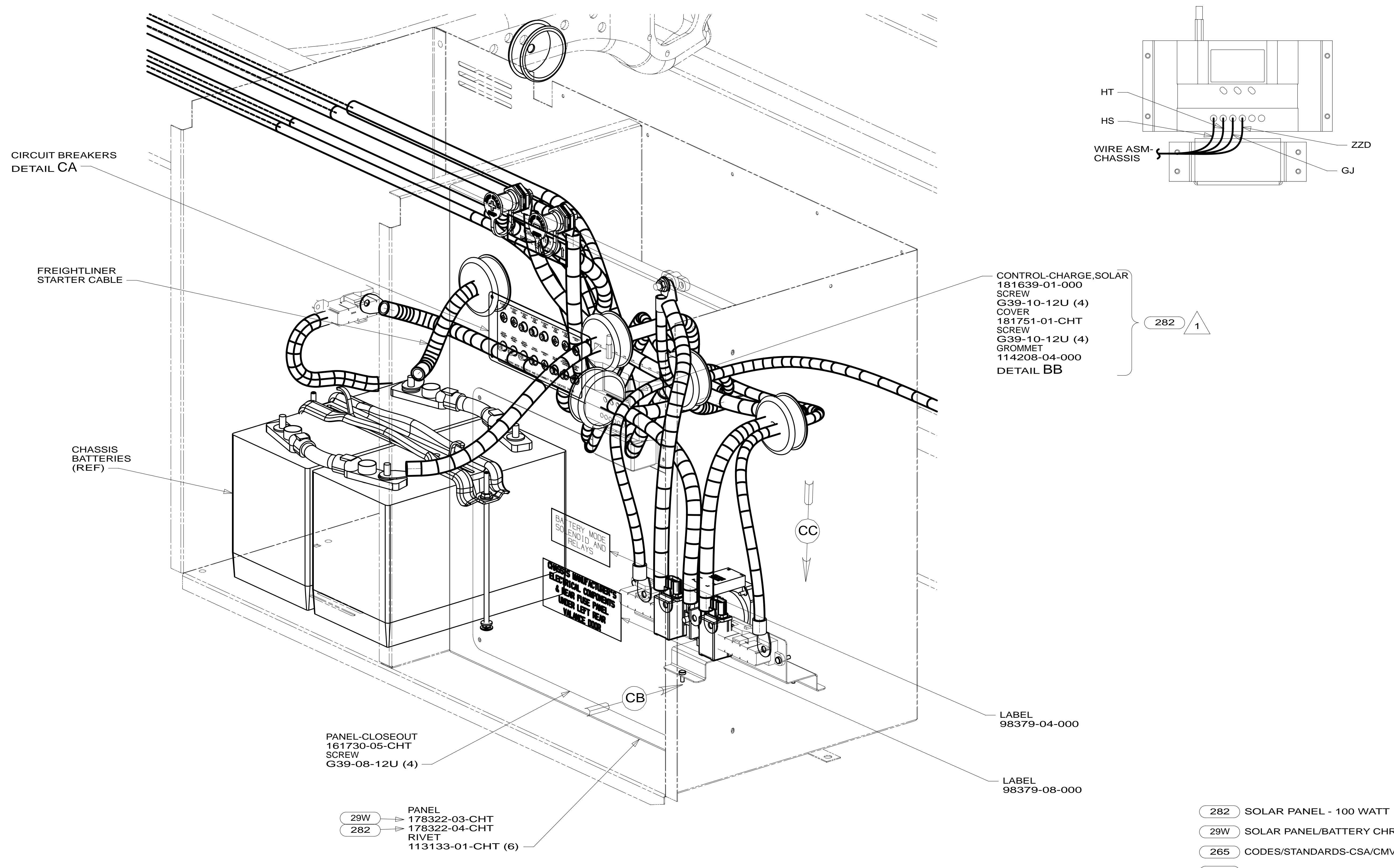
- 282 SOLAR PANEL - 100 WATT
- 265 CODES/STANDARDS-CSA/CMVSS
- 1B1 CODES/STANDARDS USA

WINNEBAGO		COPYRIGHT 2013 WINNEBAGO INDUSTRIES, INC.	
DFT-ORIG	ORIG. DATE	14 P34B	
CHKR	ALL DIMENSIONS ARE IN MILLIMETERS		
P.E.	FIRST USED		
M.E.			
DSNR			
UNSPECIFIED TOLERANCES ARE:		MATERIAL:	
WHOLE DIM (X)	: 3		
ONE-PLACE (X.X)	: 1.5		
TWO-PLACE (X.XX)	: 0.50		
ANGLE	: 1°		
THIRD ANGLE PROJECTION			
DO NOT SCALE DRAWING		REFER TO ES0018 FOR FASTENER TIGHTENING GUIDELINES	
TITLE: WIRING INSTL-CHASSIS			
SHEET 1 OF 4		PART NO 184892 REV	
REF:		1 26-Dec-2013	

FOR ELECTRICAL TORQUE SPECIFICATIONS SEE DWG NO. 128783-01-000

X-X FOR ELECTRICAL CALLOUTS SEE DWG NO. 121339-01-000

DETAIL AA 3



- CONTROL-CHARGE, SOLAR
- 181639-01-000
- SCREW
- G39-10-12U (4)
- COVER
- 181751-01-CHT
- SCREW
- G39-10-12U (4)
- GROMMET
- 114208-04-000
- DETAIL BB

282 1

VIEW BA

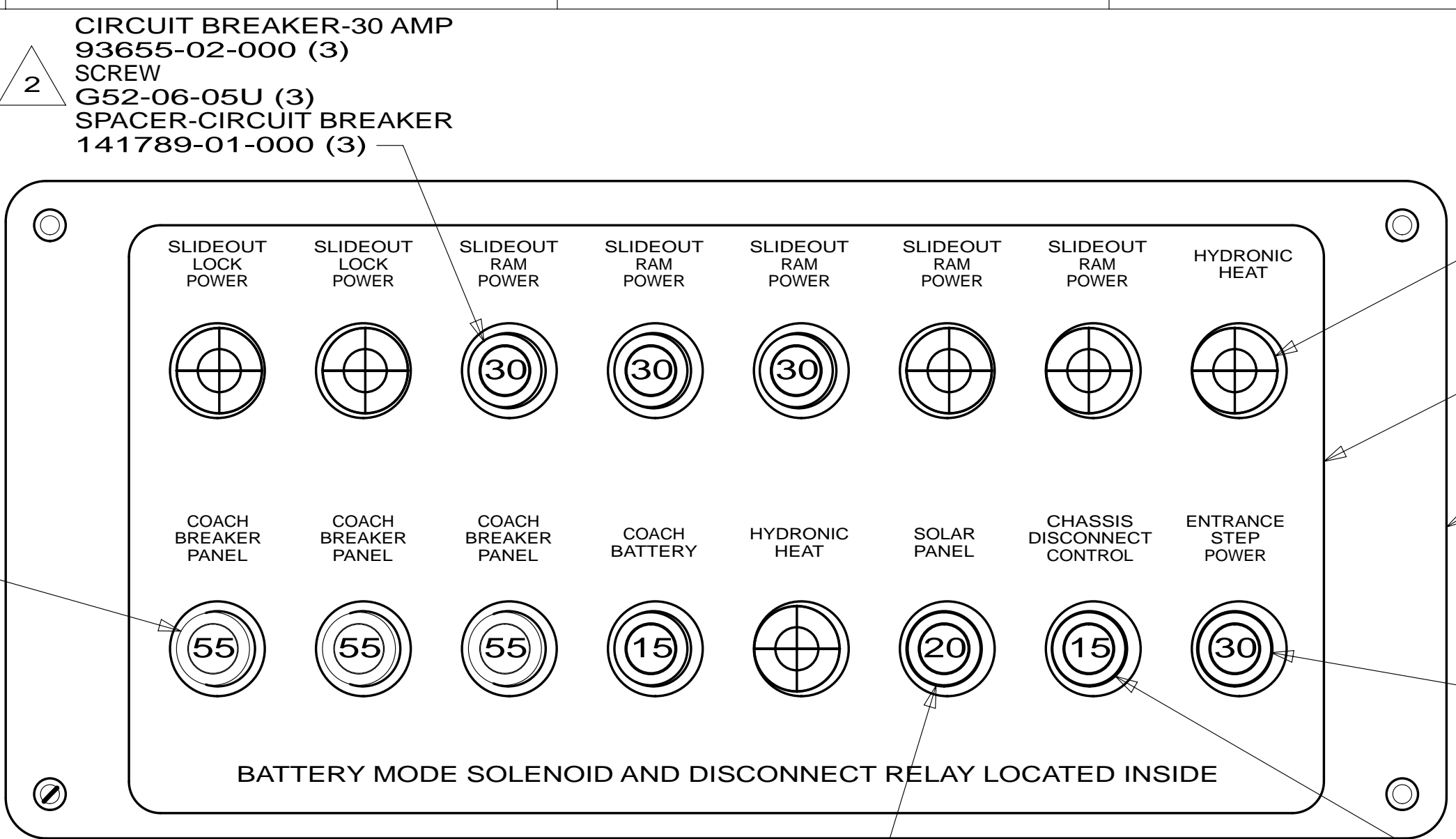
NOTES:
 1 TAPE WIRES BACK WITH OPTICALLY TRANSPARENT TAPE

FOR ELECTRICAL TORQUE SPECIFICATIONS SEE DWG NO. 128783-01-000

FOR ELECTRICAL CALLOUTS SEE DWG NO. 121339-01-000

- 282 SOLAR PANEL - 100 WATT
- 29W SOLAR PANEL/BATTERY CHRGR W/O
- 265 CODES/STANDARDS-CSA/CMVSS
- 1B1 CODES/STANDARDS USA

FIRST USED	
14 P34B	
DO NOT SCALE DRAWING	
TITLE: WIRING INSTL-CHASSIS	
SHEET 2	PART NO 184892 REV



CIRCUIT BREAKER-55 AMP
113482-01-000 (3)

CIRCUIT BREAKER-30 AMP
93655-02-000 (3)
SCREW
G52-06-05U (3)
SPACER-CIRCUIT BREAKER
141789-01-000 (3)

PLUG-PLASTIC
81211-06-000 (6) ← 282
81211-06-000 (7) ← 29W

LABEL-CIRCUIT BREAKER
93236-77-000

PLATE-CIRCUIT BREAKER
139067-05-CHT
SCREW
G11-08-12U (4)

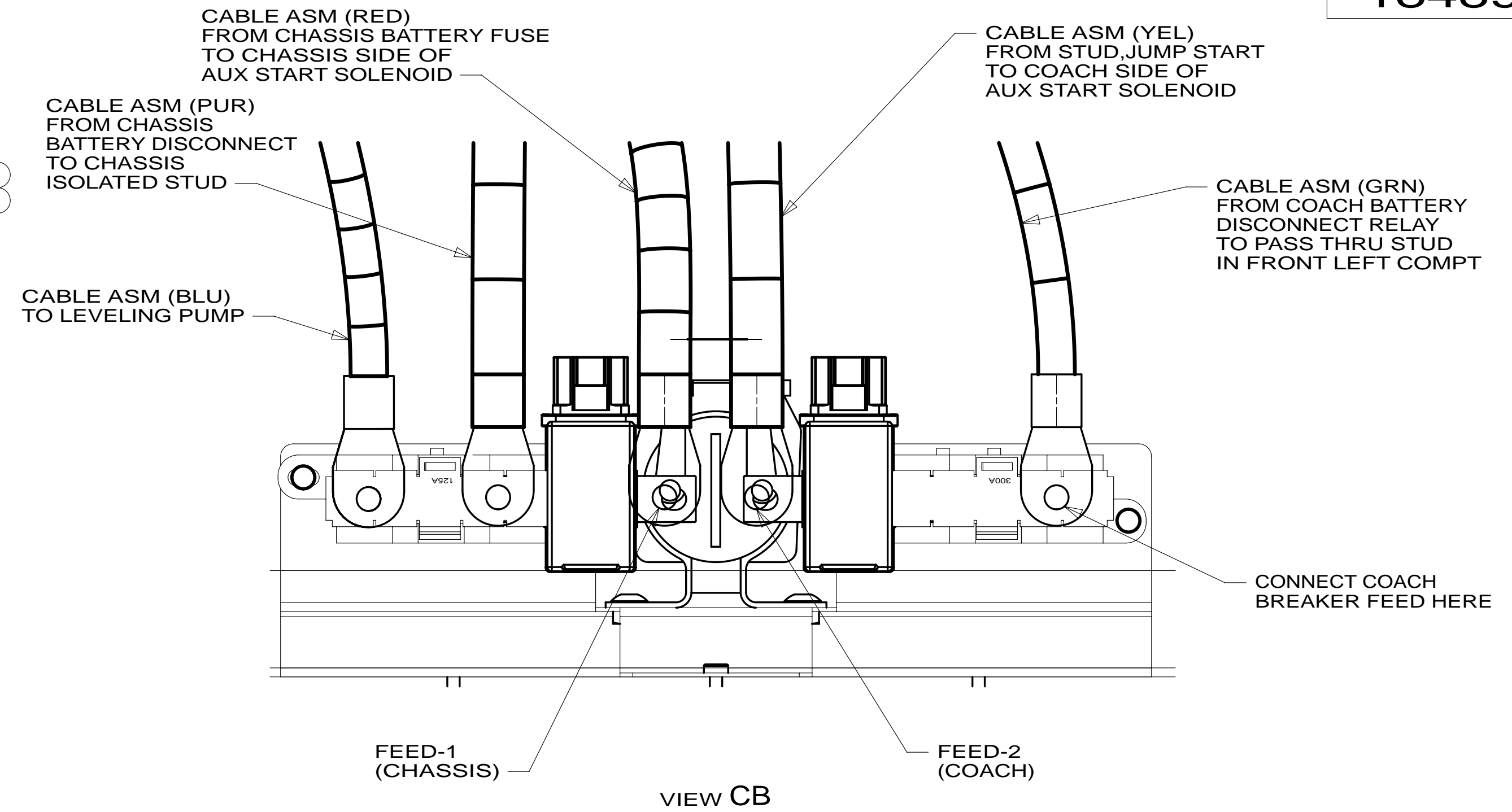
CIRCUIT BREAKER-30 AMP
93655-02-000
SCREW
G52-06-05U
SPACER-CIRCUIT BREAKER
141789-01-000

CIRCUIT BREAKER-15 AMP
93654-02-000 (2)
SCREW
G52-06-05U (2)
SPACER-CIRCUIT BREAKER
141789-01-000 (2)

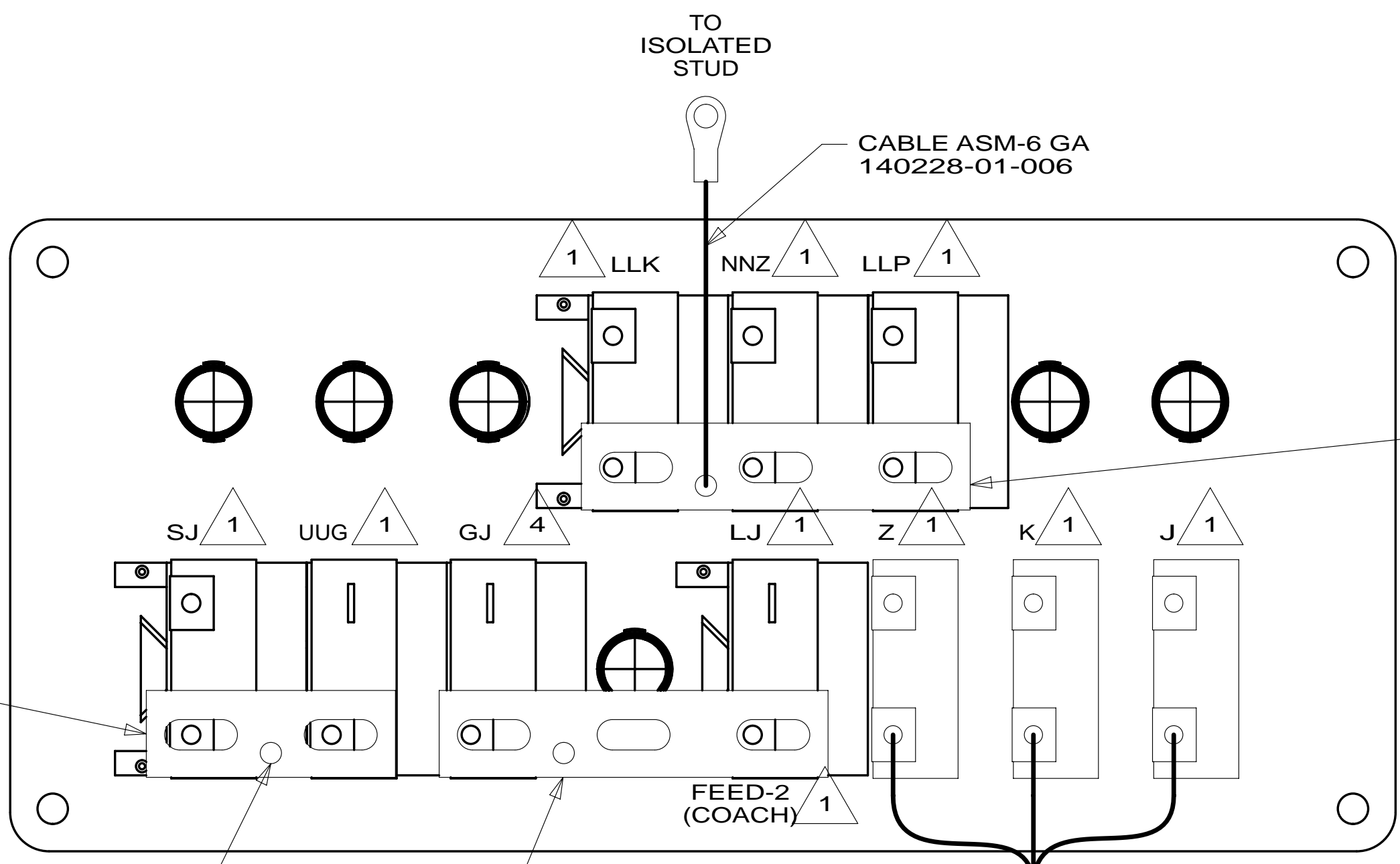
CIRCUIT BREAKER-20 AMP
93654-03-000
SCREW
G52-06-05U
SPACER-CIRCUIT BREAKER
141789-01-000

DETAIL CA

BATTERY MODE SOLENOID AND DISCONNECT RELAY LOCATED INSIDE



VIEW CB



BUSS BAR
141744-02-000

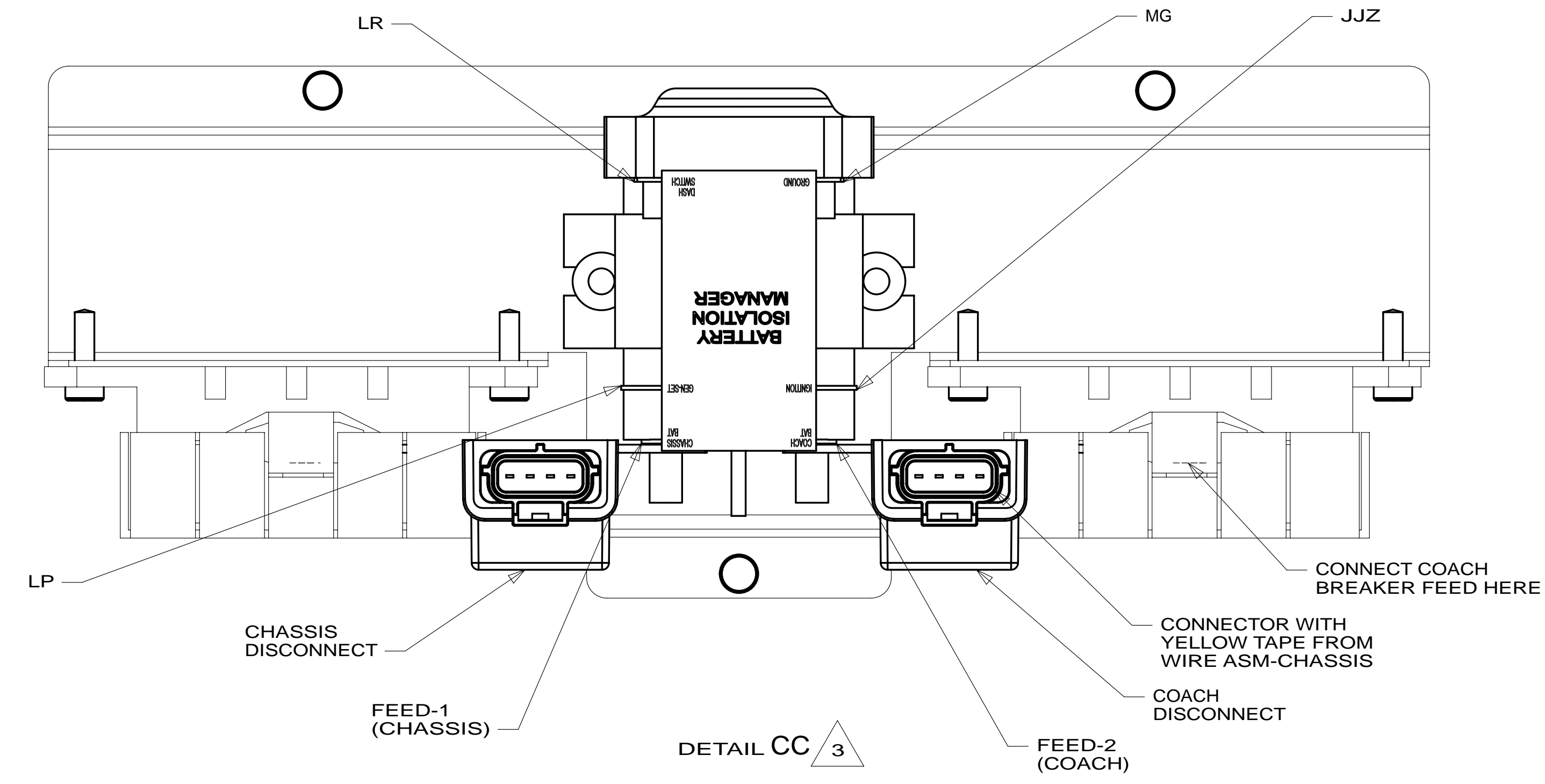
BUSS BAR
141744-01-000

FEED-1
(CHASSIS)

BUSS BAR
141744-02-000

WIRE ASM-BREAKERS
176775-02-009

DETAIL CA
(BACK VIEW-COMPONENTS)



DETAIL CC

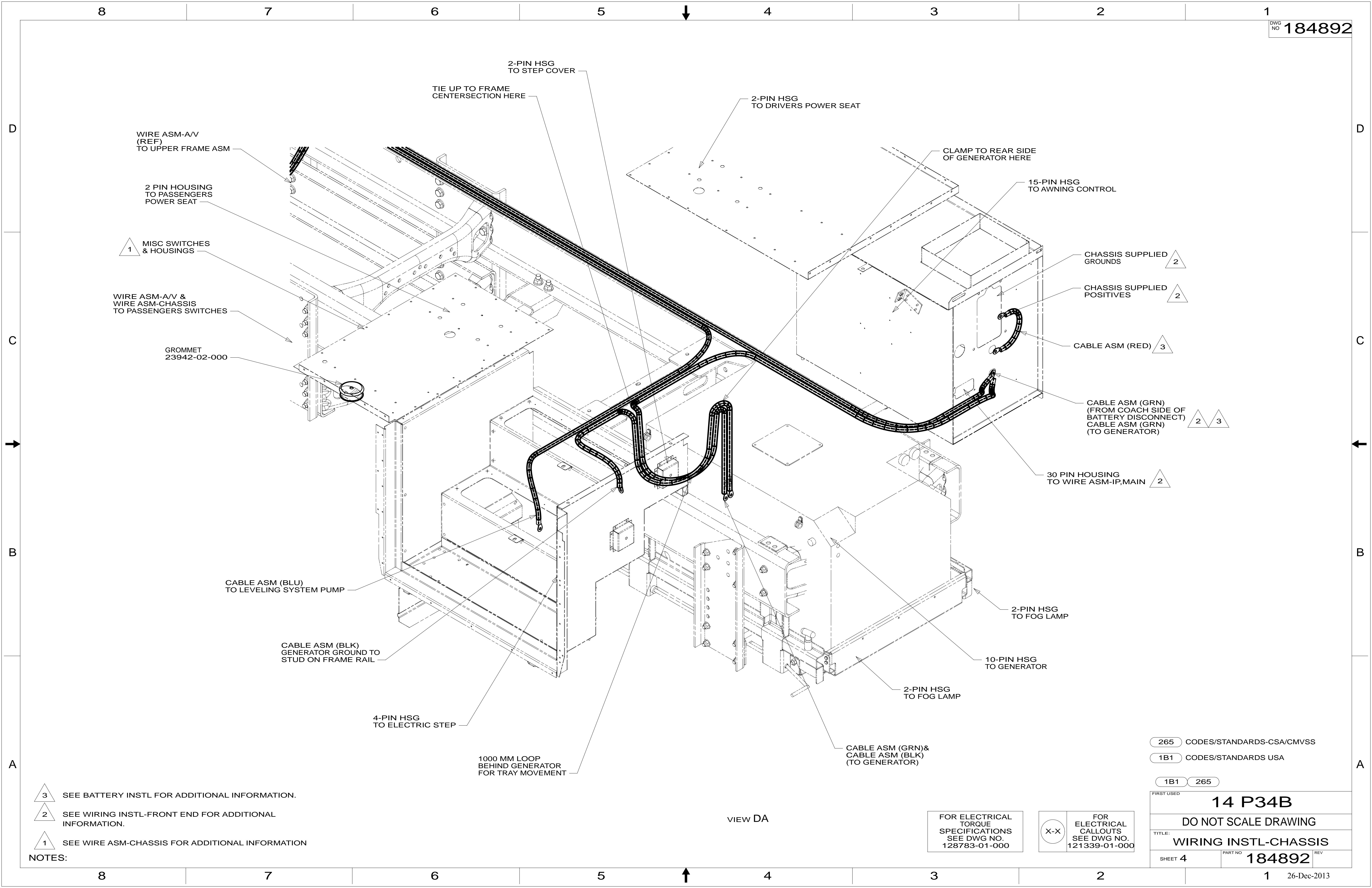
- NOTES:
- 4 FROM WIRE ASM-CHASSIS. TIE BACK TO HARNESS WITH 29W.
 - 3 SEE BATTERY INSTL FOR ADDITIONAL INFORMATION.
 - 2 REPLACE EXISTING SCREW TO PROPERLY ATTACH BREAKER TO BUSS BAR.
 - 1 CIRCUITS BRANCH FROM WIRE ASM-CHASSIS.

- 282 SOLAR PANEL - 100 WATT
- 29W SOLAR PANEL/BATTERY CHRNG W/O
- 265 CODES/STANDARDS-CSA/CMVSS
- 1B1 CODES/STANDARDS USA

FOR ELECTRICAL TORQUE SPECIFICATIONS SEE DWG NO. 128783-01-000

FOR ELECTRICAL CALLOUTS SEE DWG NO. 121339-01-000

FIRST USED	
14 P34B	
DO NOT SCALE DRAWING	
TITLE: WIRING INSTL-CHASSIS	
SHEET 3	PART NO 184892 REV



- NOTES:
- 3 SEE BATTERY INSTL FOR ADDITIONAL INFORMATION.
 - 2 SEE WIRING INSTL-FRONT END FOR ADDITIONAL INFORMATION.
 - 1 SEE WIRE ASM-CHASSIS FOR ADDITIONAL INFORMATION

VIEW DA

FOR ELECTRICAL TORQUE SPECIFICATIONS SEE DWG NO. 128783-01-000

FOR ELECTRICAL CALLOUTS SEE DWG NO. 121339-01-000

265	CODES/STANDARDS-CSA/CMVSS
1B1	CODES/STANDARDS USA
1B1	265
FIRST USED	
14 P34B	
DO NOT SCALE DRAWING	
TITLE: WIRING INSTL-CHASSIS	
SHEET 4	PART NO 184892 REV