



**DANGER**

**Danger of electrical shock, burns or death.** Always remove all power sources before attempting any repair, service or diagnostic work. Power can be present from shore power, generator, inverter or battery. All power sources must be disabled and secured before performing any service.



**CAUTION**

If you lack the skills, tools or equipment to perform diagnostic or repair work leave such work to an authorized Winnebago Industries dealer or other qualified shop.

DRAWING NO.	MODEL
184824-01	259G
184824-02	170A
184824-03	170X

RELEASE	REV/DATE A	DWG NO 184824
REV ZONE	REVISION RECORD	DATE DFR-ORIG

		259G	170A	170X
RED	1B1	136135-07-070	136135-07-038	136135-07-048
	265	136136-07-070	136136-07-038	136136-07-048
YEL	1B1	136131-05-025	136131-05-070	136131-05-028
	265	136134-05-025	136134-05-070	136134-05-028
BLK	1B1	136135-06-015	136135-06-030	136135-06-018
	265	136136-06-015	136136-06-030	136136-06-018
BLU	1B1	136131-02-045	136131-02-108	136131-02-145
	265	136134-02-045	136134-02-108	136134-02-145
BLK-2	1B1	136135-22-040	136135-22-052	136135-22-018
	265	136136-22-040	136136-22-052	136136-22-018
WHT	1B1	136135-09-006	136135-09-011	136135-09-031
	265	136136-09-006	136136-09-011	136136-09-031
THROW IN WIRE #1	1B1	136131-02-085		
	265	136134-02-085		
THROW IN WIRE #2	1B1	136131-02-070		
	265	136134-02-070		
THROW IN WIRE #3	1B1	136135-09-012		
	265	136136-09-012		
GENERATOR EXTENSION	1B1	136137-01-021		136137-01-015
	265	136138-01-021		136138-01-015
MAIN	1B1	136137-01-020	136137-01-042	136137-01-017
	265	136138-01-020	136138-01-042	136138-01-017
GROUND MAIN		136145-06-035	136145-06-083	136145-06-070
MAIN EXTENSION	1B1	136137-01-020	136137-01-014	136137-01-010
	265	136138-01-020	136138-01-014	136138-01-010
CORD-POWER ASM		183140-01-000	183140-01-000	183140-01-000
GROUND ATS		136145-05-020	136145-05-070	136145-05-066

- SHIP WIRE LOOSE WITH LOAD CENTER. MFG LINE WANTS TO INSTALL TO EASE WIRE ROUTING.
  - SEE SHT 3 FOR CONNECTION INFORMATION.
  - DO NOT HI-POT POWER CORD, LED INDICATOR LIGHT MAY FAIL.
  - GROUND WIRES TO BE INSTALLED ON MFG LINE. SHIP GROUND WIRES LOOSE WITH LOAD CENTER.
3. SEE WIRING INSTL-BODY,12V FOR ADDITIONAL INFORMATION.
  2. SECURE WIRES TO BACKSIDE OF LOAD CENTER WITH WIRE TIE 116673-01-000.
  1. ALL GROUNDS WIRES TO BE COVERED WITH TUBING 8041-02-000.

- CODES/STANDARDS-CSA/CMVSS
- CODES/STANDARDS USA

**WINNEBAGO** COPYRIGHT 2014 WINNEBAGO INDUSTRIES, INC.

14 TOURING COACH

UNSPECIFIED TOLERANCES ARE:  
 WHOLE DIM (X) : 3  
 ONE-PLACE (X.X) : 1.5  
 TWO-PLACE (X.XX) : 0.50  
 ANGLE : 1°

THIRD ANGLE PROJECTION

DO NOT SCALE DRAWING REFER TO ES0018 FOR FASTENER TIGHTENING GUIDELINES

TITLE: **LOAD CENTER/ATS ASM**

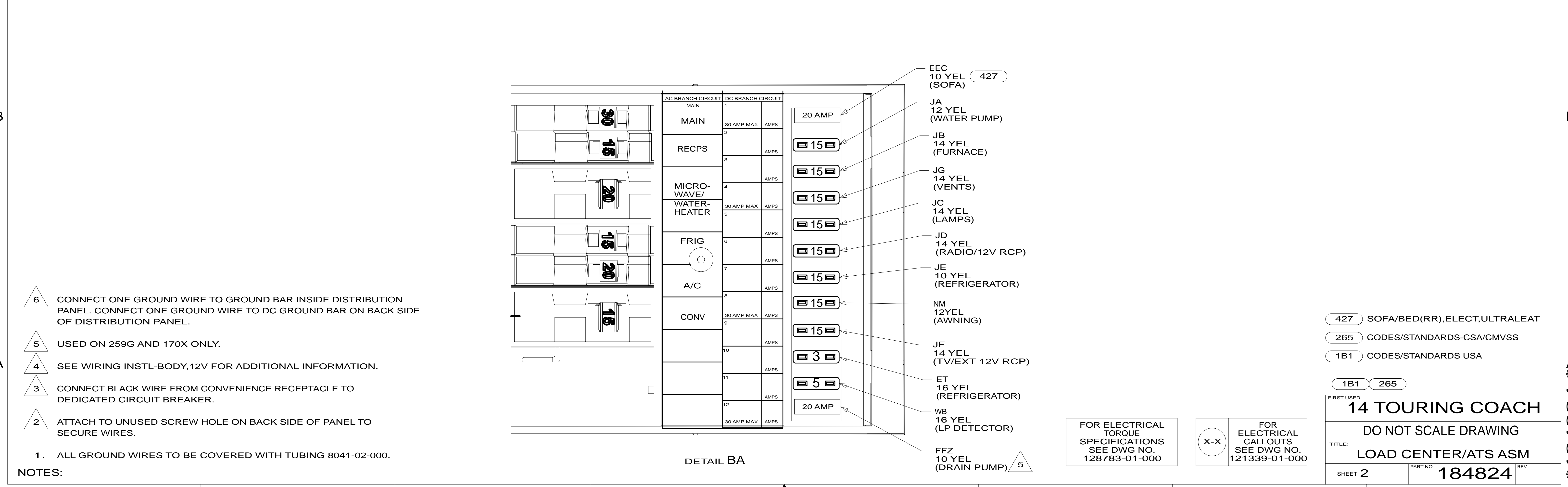
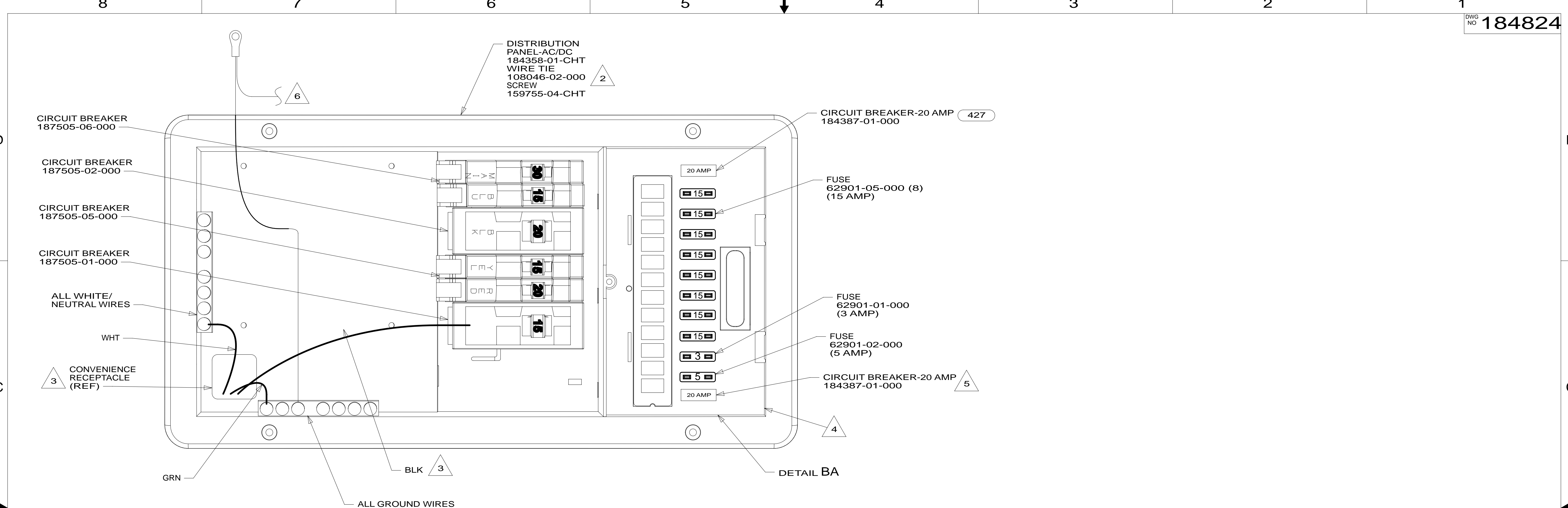
SHEET 1 OF 3 PART NO **184824** REV

REF: 1 06-Aug-2014

FOR ELECTRICAL TORQUE SPECIFICATIONS SEE DWG NO. 128783-01-000

FOR ELECTRICAL CALLOUTS SEE DWG NO. 121339-01-000

\* 184824 \* A



- 6 CONNECT ONE GROUND WIRE TO GROUND BAR INSIDE DISTRIBUTION PANEL. CONNECT ONE GROUND WIRE TO DC GROUND BAR ON BACK SIDE OF DISTRIBUTION PANEL.
- 5 USED ON 259G AND 170X ONLY.
- 4 SEE WIRING INSTL-BODY,12V FOR ADDITIONAL INFORMATION.
- 3 CONNECT BLACK WIRE FROM CONVENIENCE RECEPTACLE TO DEDICATED CIRCUIT BREAKER.
- 2 ATTACH TO UNUSED SCREW HOLE ON BACK SIDE OF PANEL TO SECURE WIRES.

1. ALL GROUND WIRES TO BE COVERED WITH TUBING 8041-02-000.

FOR ELECTRICAL TORQUE SPECIFICATIONS SEE DWG NO. 128783-01-000

FOR ELECTRICAL CALLOUTS SEE DWG NO. 121339-01-000

- 427 SOFA/BED(RR),ELECT,ULTRALEAT
- 265 CODES/STANDARDS-CSA/CMVSS
- 1B1 CODES/STANDARDS USA

FIRST USED	
<b>14 TOURING COACH</b>	
DO NOT SCALE DRAWING	
TITLE: <b>LOAD CENTER/ATS ASM</b>	
SHEET 2	PART NO <b>184824</b> REV

\* 184824 \*

