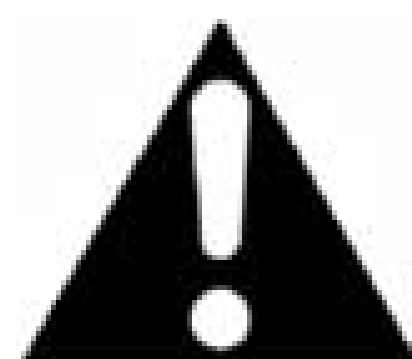




**DANGER**

**Danger of electrical shock, burns or death.** Always remove all power sources before attempting any repair, service or diagnostic work. Power can be present from shore power, generator, inverter or battery. All power sources must be disabled and secured before performing any service.

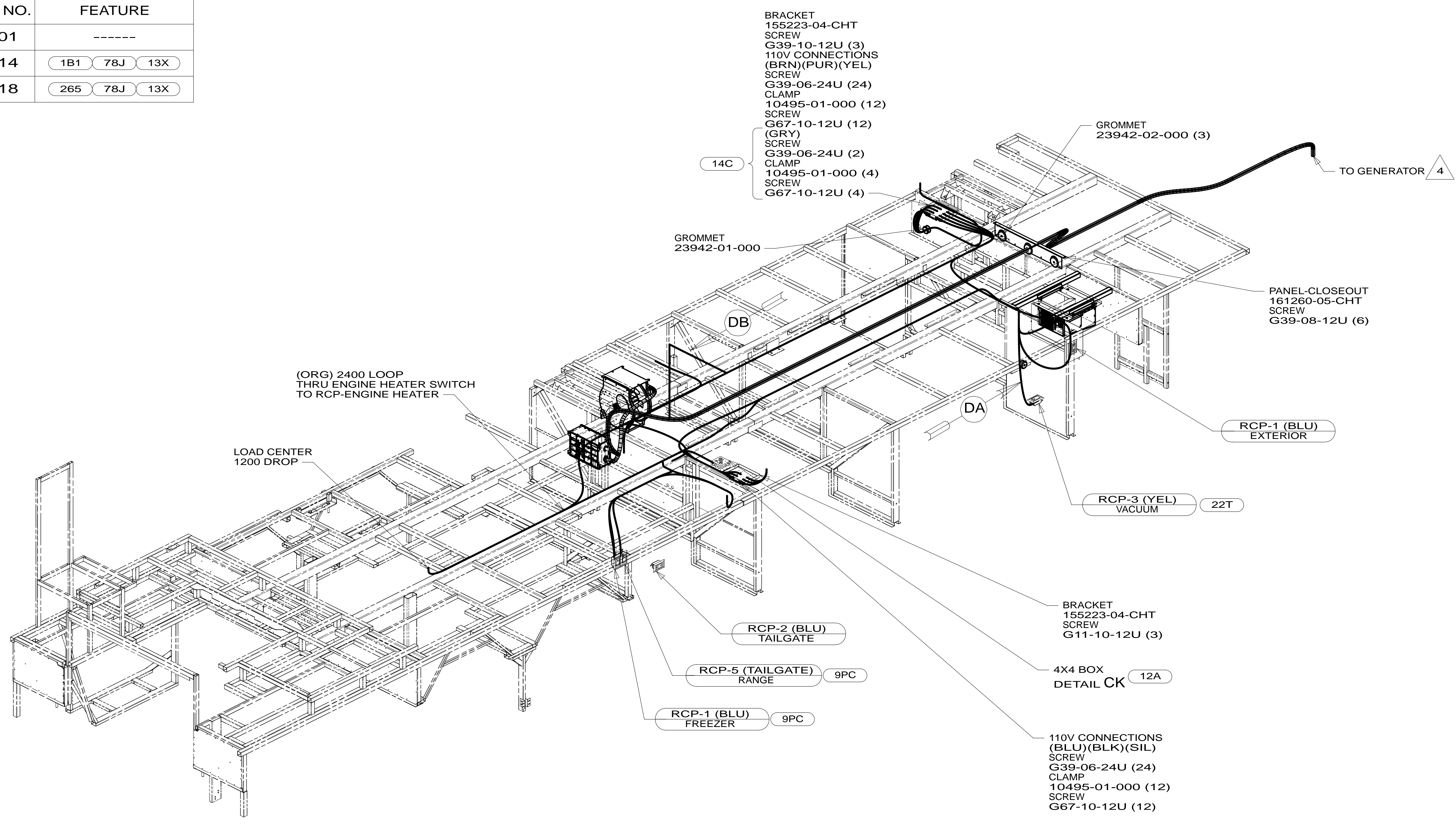


**CAUTION**

If you lack the skills, tools or equipment to perform diagnostic or repair work leave such work to an authorized Winnebago Industries dealer or other qualified shop.

DRAWING NO.	FEATURE
184774-01	-----
184774-14	1B1 78J 13X
184774-18	265 78J 13X

RELEASE	REV/DATE	DWG NO	184774
REV ZONE	REVISION RECORD	DATE	DFT-ORIG



- 9PC TAILGATE PACKAGE
- 12A ALL ELECTRIC COACH
- 14C FIREPLACE-ELECTRIC
- 22T VACUUM SYSTEM-CENTRAL
- 265 CODES/STANDARDS-CSA/CMVSS
- 1B1 CODES/STANDARDS USA

1B1 265

**WINNEBAGO**

COPYRIGHT 2013 WINNEBAGO INDUSTRIES, INC.

DFT-ORIG	ORIG. DATE
CHKR	ALL DIMENSIONS ARE IN MILLIMETERS
P.E.	
M.E.	FIRST USED
DSNR	<b>14 R42QD</b>

UNSPECIFIED TOLERANCES ARE:

WHOLE DIM (X)	: 3
ONE-PLACE (X.X)	: 1.5
TWO-PLACE (X.XX)	: 0.50
ANGLE	: 1°

THIRD ANGLE PROJECTION

DO NOT SCALE DRAWING REFER TO ES0018 FOR FASTENER TIGHTENING GUIDELINES

TITLE: **WIRING INSTL-BODY,110V**

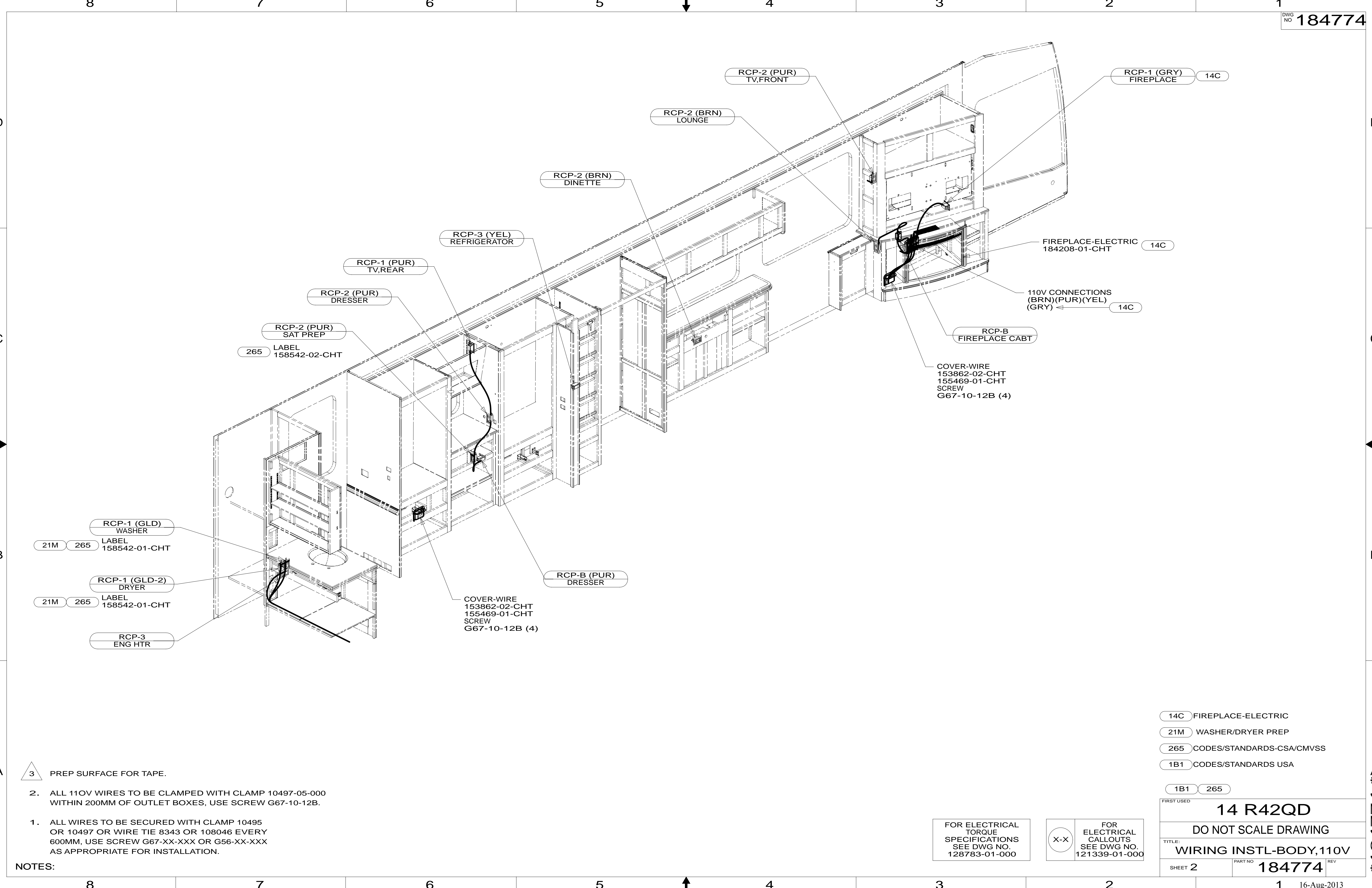
SHEET 1 OF 4 PART NO **184774** REV

REF: 1 16-Aug-2013

- 5 CONNECT BLK TO BLK, WHT TO WHT, & GROUNDS TO GROUNDS.
- 4 SEE GENERATOR INSTL FOR ADDITIONAL INFORMATION.
3. WIRES THAT REST ON WIRE TRAYS ARE TO BE TIED DOWN WITH WIRE TIE 8343-04-000.
2. CLAMP TO FLOOR SUPPORT TUBES AS NECESSARY WITH CLAMP 10497-01-000.
1. ALL WIRES TO BE SECURED WITH CLAMP 10495 OR 10497 OR WIRE TIE 8343 OR 108046 EVERY 600MM, USE SCREW G67-XX-XXX OR G56-XX-XXX AS APPROPRIATE FOR INSTALLATION.

FOR ELECTRICAL TORQUE SPECIFICATIONS SEE DWG NO. 128783-01-000

FOR ELECTRICAL CALLOUTS SEE DWG NO. 121339-01-000



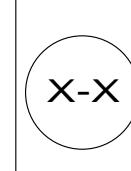
- NOTES:**
- 1. ALL WIRES TO BE SECURED WITH CLAMP 10495 OR 10497 OR WIRE TIE 8343 OR 108046 EVERY 600MM, USE SCREW G67-XX-XXX OR G56-XX-XXX AS APPROPRIATE FOR INSTALLATION.
  - 2. ALL 110V WIRES TO BE CLAMPED WITH CLAMP 10497-05-000 WITHIN 200MM OF OUTLET BOXES, USE SCREW G67-10-12B.

- 14C FIREPLACE-ELECTRIC
- 21M WASHER/DRYER PREP
- 265 CODES/STANDARDS-CSA/CMVSS
- 1B1 CODES/STANDARDS USA

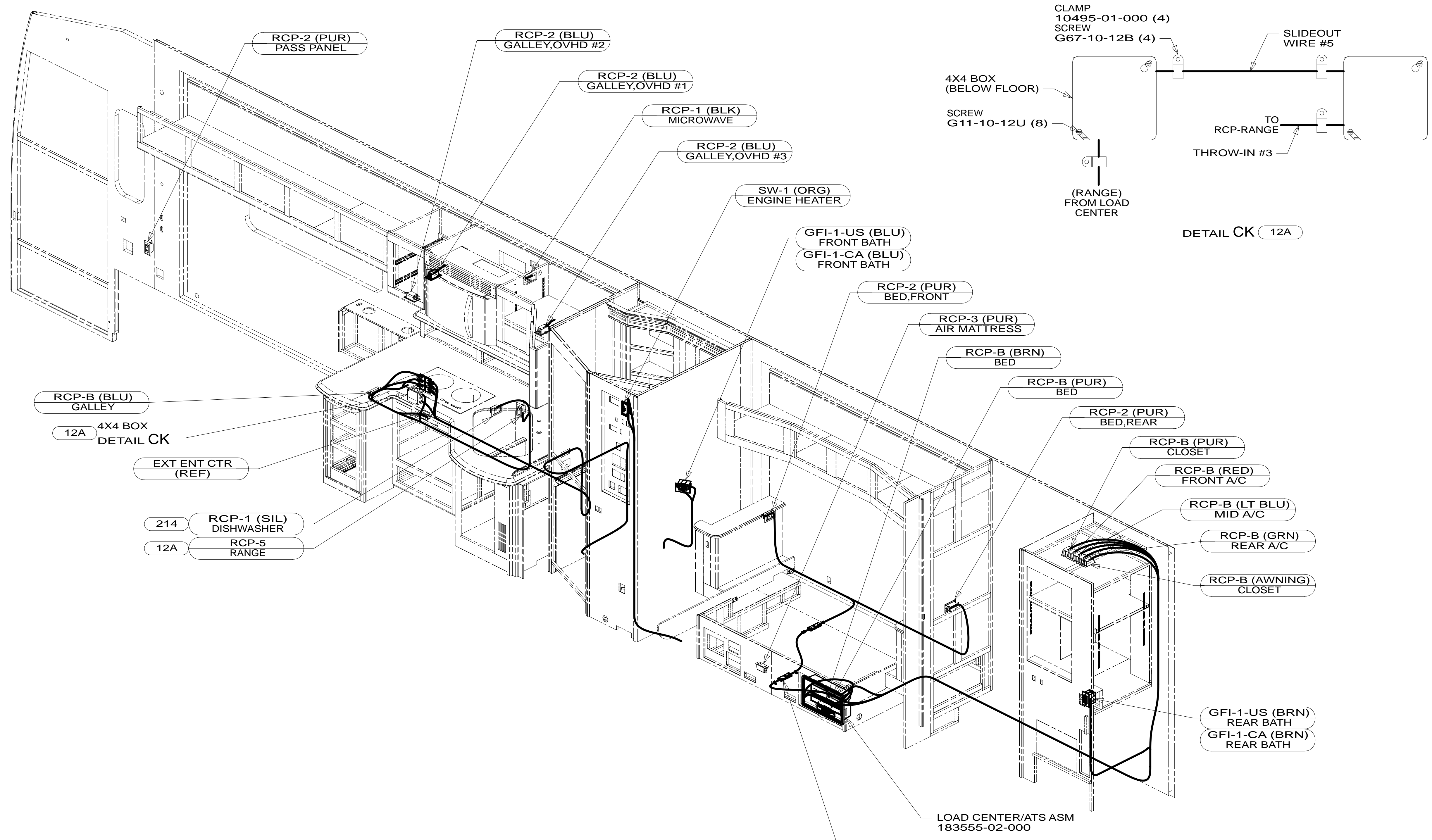
FIRST USED	
<b>14 R42QD</b>	
DO NOT SCALE DRAWING	
TITLE: <b>WIRING INSTL-BODY, 110V</b>	
SHEET 2	PART NO <b>184774</b> REV

FOR ELECTRICAL TORQUE SPECIFICATIONS SEE DWG NO. 128783-01-000

FOR ELECTRICAL CALLOUTS SEE DWG NO. 121339-01-000



\* 184774 \*



- NOTES:
1. ALL WIRES TO BE SECURED WITH CLAMP 10495 OR 10497 OR WIRE TIE 8343 OR 108046 EVERY 600MM, USE SCREW G67-XX-XXX OR G56-XX-XXX AS APPROPRIATE FOR INSTALLATION.
  2. ALL 110V WIRES TO BE CLAMPED WITH CLAMP 10497-05-000 WITHIN 200MM OF OUTLET BOXES, USE SCREW G67-10-12B.

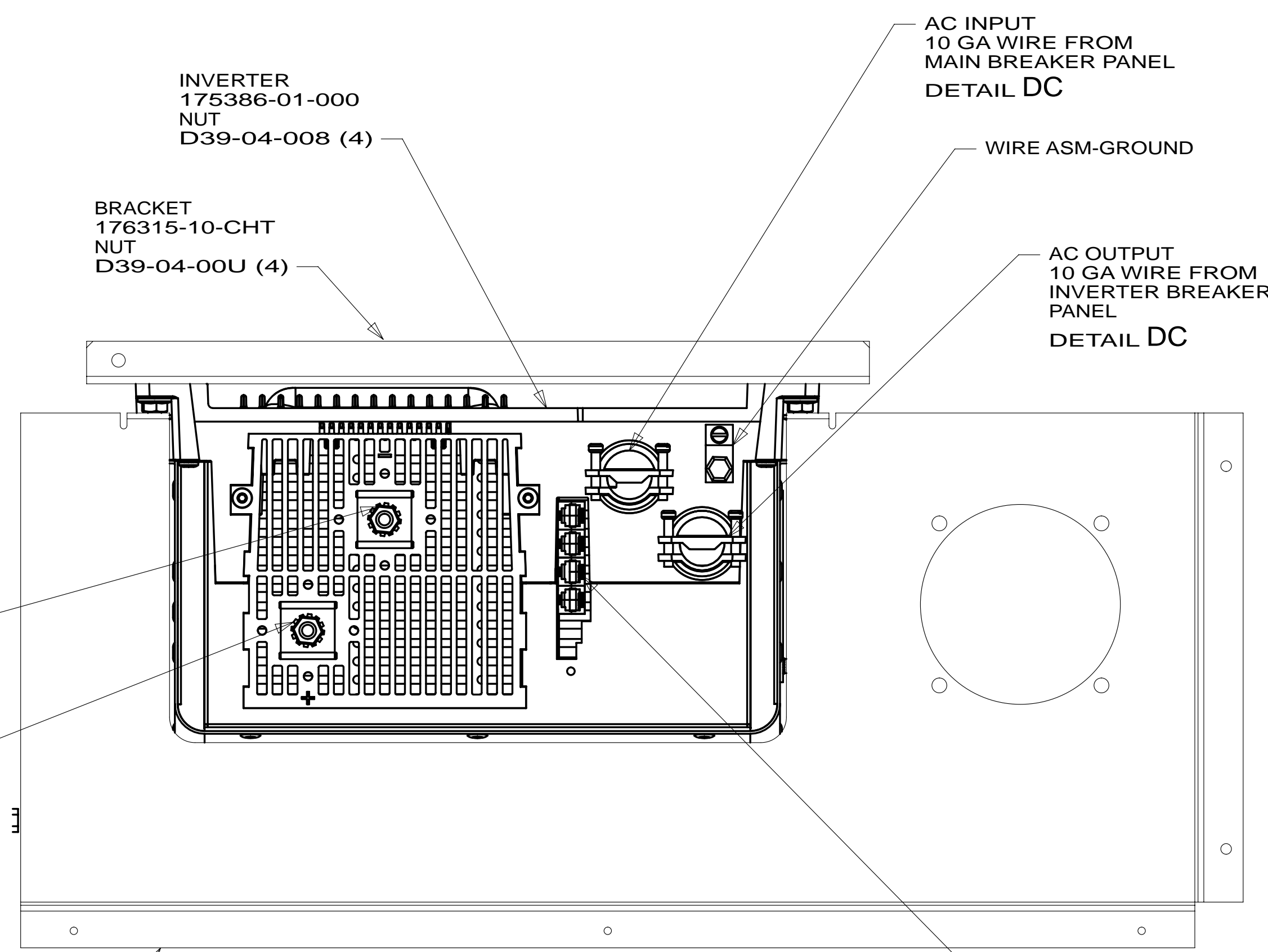
FOR ELECTRICAL TORQUE SPECIFICATIONS SEE DWG NO. 128783-01-000

FOR ELECTRICAL CALLOUTS SEE DWG NO. 121339-01-000

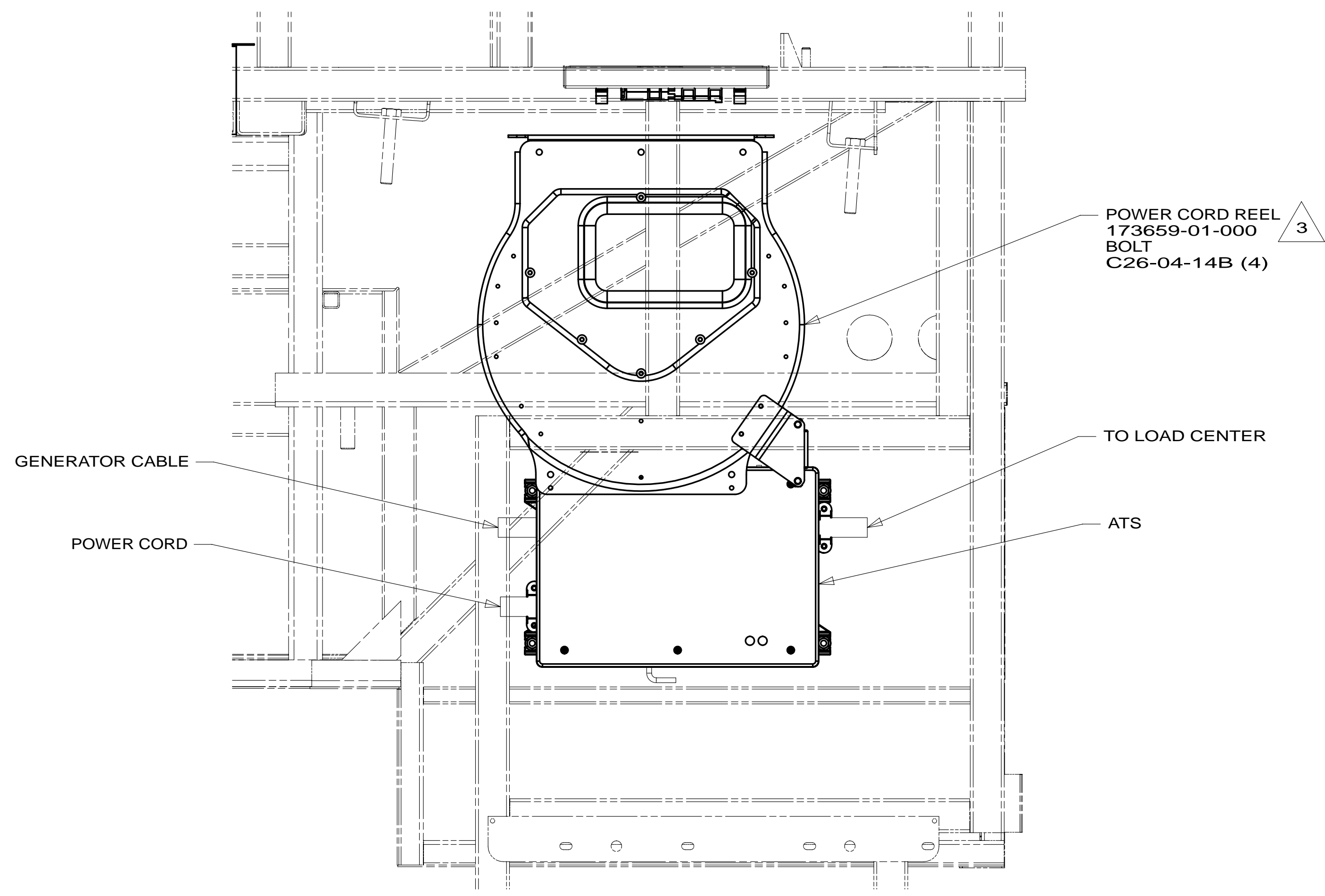
- 12A ALL ELECTRIC COACH
- 214 DISHWASHER DRAWER STYLE
- 265 CODES/STANDARDS-CSA/CMVSS
- 1B1 CODES/STANDARDS USA

FIRST USED	
<b>14 R42QD</b>	
DO NOT SCALE DRAWING	
TITLE: <b>WIRING INSTL-BODY, 110V</b>	
SHEET 3	PART NO <b>184774</b> REV

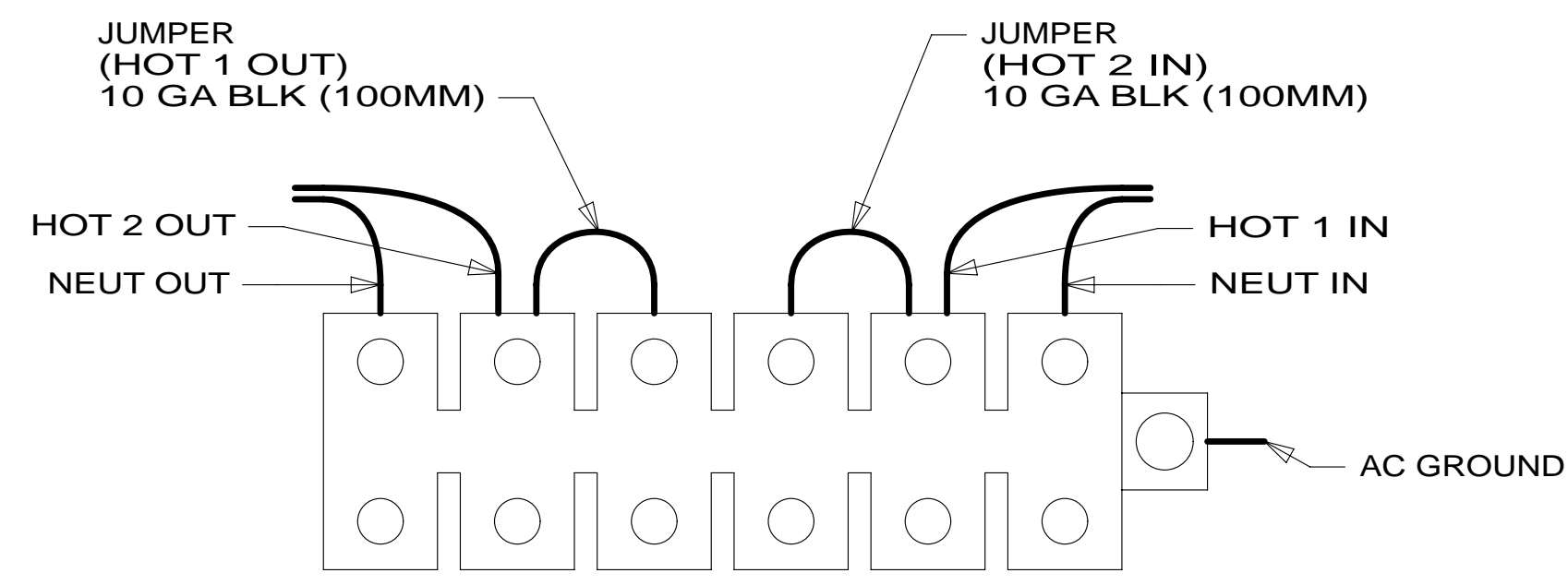
\* 184774 \*



VIEW DA



VIEW DB



DETAIL DC

- NOTES:
- 5 TORQUE TO 10-12 FT LBS.
  - 4 INVERTER IS LOCATED BY SCREW HOLES ON CLOSEOUT PANEL.
  - 3 INSERT BOLT FROM BOTTOM OF COMPARTMENT.
  - 2 SEE BATTERY INSTL FOR ADDITIONAL INFORMATION.
  - 1 SEE LOAD CENTER/ATS ASM FOR ADDITIONAL INFORMATION.

265 CODES/STANDARDS-CSA/CMVSS  
1B1 CODES/STANDARDS USA

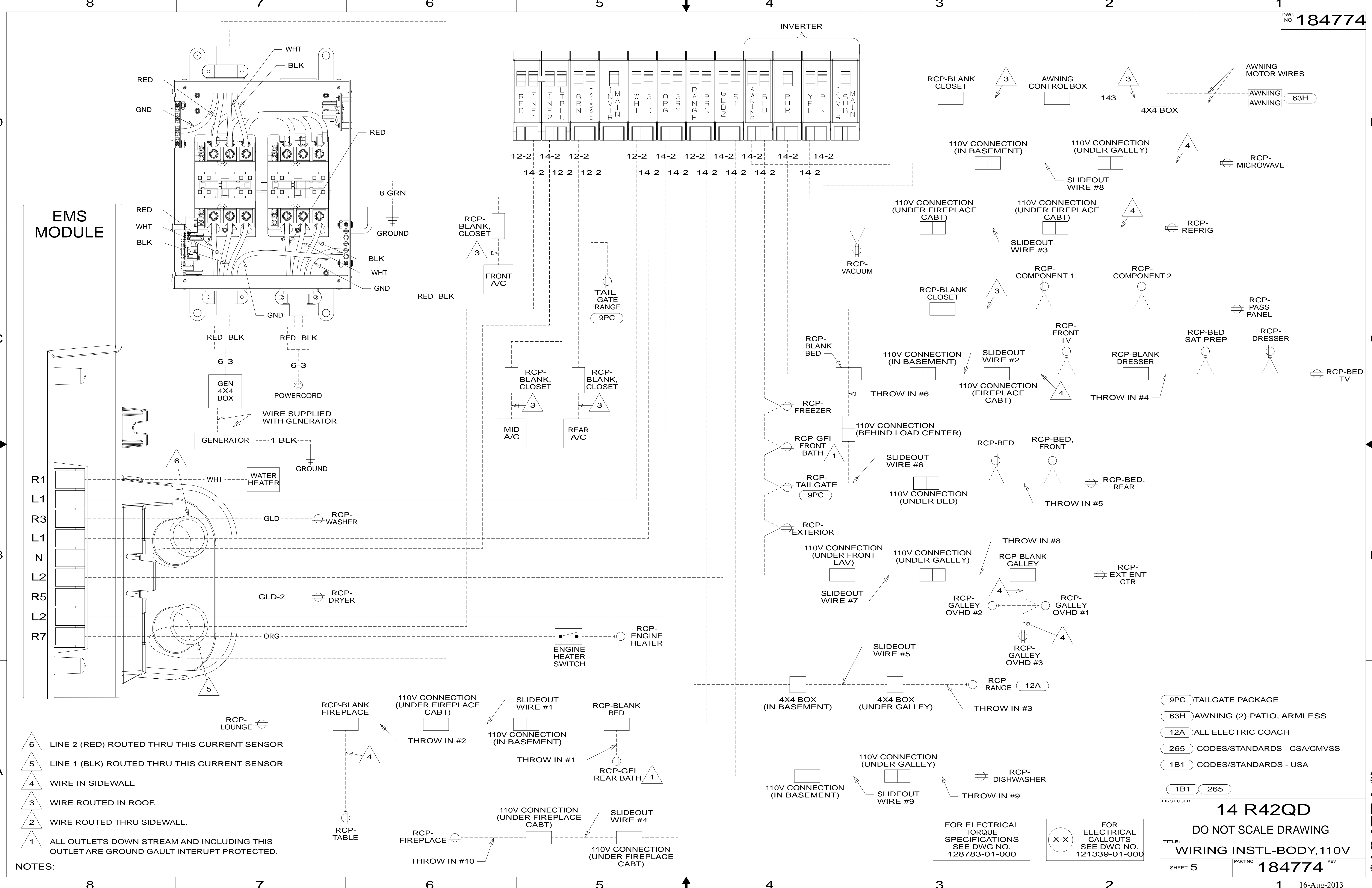
1B1	265
FIRST USED	
<b>14 R42QD</b>	
<b>DO NOT SCALE DRAWING</b>	
TITLE: <b>WIRING INSTL-BODY, 110V</b>	
SHEET 4	PART NO <b>184774</b> REV

FOR ELECTRICAL  
TORQUE  
SPECIFICATIONS  
SEE DWG NO.  
128783-01-000

FOR  
ELECTRICAL  
CALLOUTS  
SEE DWG NO.  
121339-01-000

\* 184774 \*





- NOTES:
- 6 LINE 2 (RED) ROUTED THRU THIS CURRENT SENSOR
  - 5 LINE 1 (BLK) ROUTED THRU THIS CURRENT SENSOR
  - 4 WIRE IN SIDEWALL
  - 3 WIRE ROUTED IN ROOF.
  - 2 WIRE ROUTED THRU SIDEWALL.
  - 1 ALL OUTLETS DOWN STREAM AND INCLUDING THIS OUTLET ARE GROUND GAULT INTERRUPT PROTECTED.

- 9PC TAILGATE PACKAGE
- 63H AWNING (2) PATIO, ARMLESS
- 12A ALL ELECTRIC COACH
- 265 CODES/STANDARDS - CSA/CMVSS
- 1B1 CODES/STANDARDS - USA

FOR ELECTRICAL TORQUE SPECIFICATIONS SEE DWG NO. 128783-01-000

FOR ELECTRICAL CALLOUTS SEE DWG NO. 121339-01-000

FIRST USED	
<b>14 R42QD</b>	
DO NOT SCALE DRAWING	
TITLE: <b>WIRING INSTL-BODY, 110V</b>	
SHEET 5	PART NO <b>184774</b> REV

\* 184774 \*