



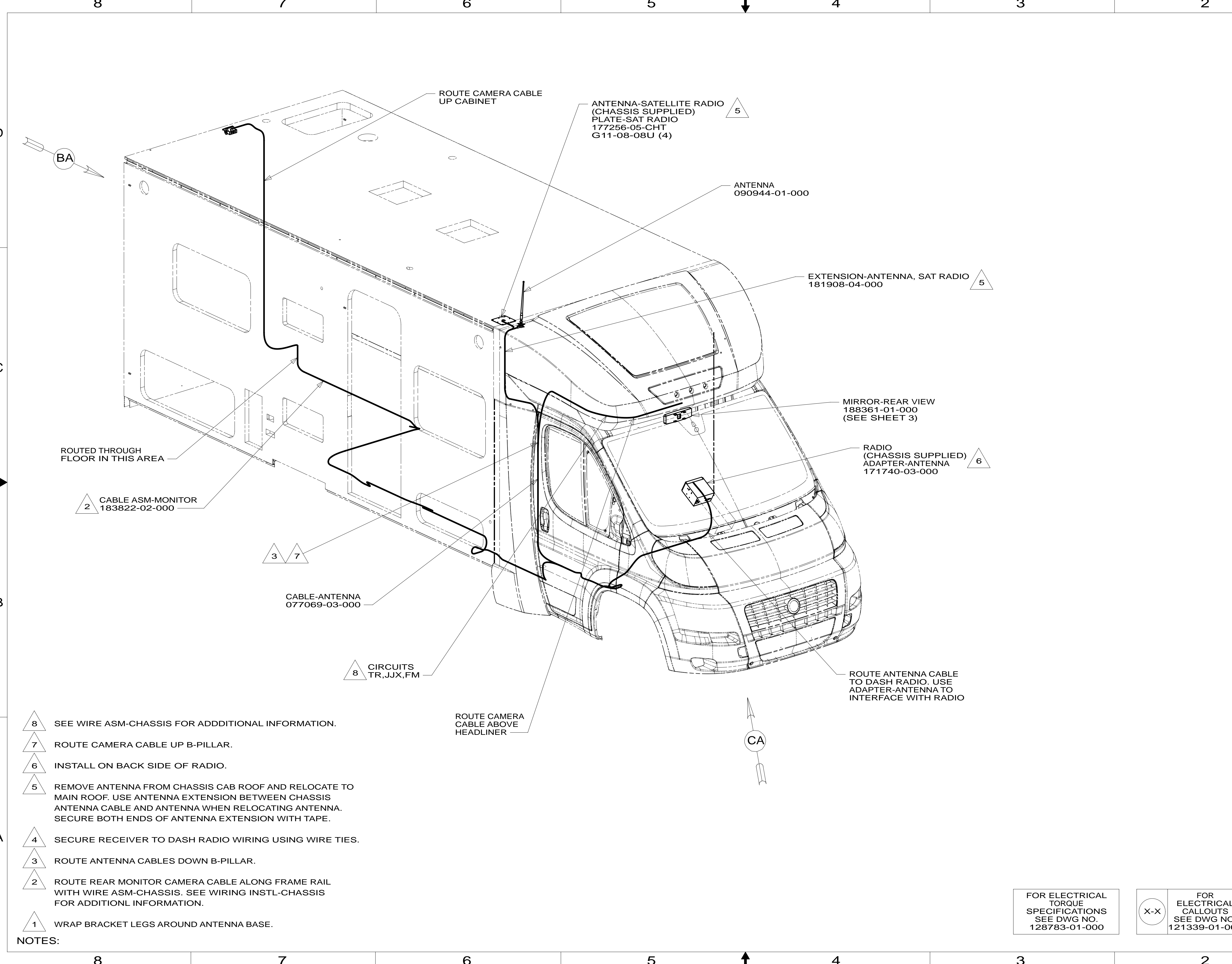
DANGER

Danger of electrical shock, burns or death. Always remove all power sources before attempting any repair, service or diagnostic work. Power can be present from shore power, generator, inverter or battery. All power sources must be disabled and secured before performing any service.



CAUTION

If you lack the skills, tools or equipment to perform diagnostic or repair work leave such work to an authorized Winnebago Industries dealer or other qualified shop.



ANTENNA-SATELLITE RADIO
(CHASSIS SUPPLIED)
PLATE-SAT RADIO
177256-05-CHT
G11-08-08U (4)

ANTENNA
090944-01-000

EXTENSION-ANTENNA, SAT RADIO
181908-04-000

MIRROR-REAR VIEW
188361-01-000
(SEE SHEET 3)

RADIO
(CHASSIS SUPPLIED)
ADAPTER-ANTENNA
171740-03-000

ROUTED THROUGH
FLOOR IN THIS AREA

CABLE ASM-MONITOR
183822-02-000

CABLE-ANTENNA
077069-03-000

CIRCUITS
TR,JJX,FM

ROUTE CAMERA
CABLE ABOVE
HEADLINER

ROUTE ANTENNA CABLE
TO DASH RADIO. USE
ADAPTER-ANTENNA TO
INTERFACE WITH RADIO

- NOTES:
- 8 SEE WIRE ASM-CHASSIS FOR ADDITIONAL INFORMATION.
 - 7 ROUTE CAMERA CABLE UP B-PILLAR.
 - 6 INSTALL ON BACK SIDE OF RADIO.
 - 5 REMOVE ANTENNA FROM CHASSIS CAB ROOF AND RELOCATE TO MAIN ROOF. USE ANTENNA EXTENSION BETWEEN CHASSIS ANTENNA CABLE AND ANTENNA WHEN RELOCATING ANTENNA. SECURE BOTH ENDS OF ANTENNA EXTENSION WITH TAPE.
 - 4 SECURE RECEIVER TO DASH RADIO WIRING USING WIRE TIES.
 - 3 ROUTE ANTENNA CABLES DOWN B-PILLAR.
 - 2 ROUTE REAR MONITOR CAMERA CABLE ALONG FRAME RAIL WITH WIRE ASM-CHASSIS. SEE WIRING INSTL-CHASSIS FOR ADDITIONAL INFORMATION.
 - 1 WRAP BRACKET LEGS AROUND ANTENNA BASE.

265 CODES/STANDARDS-CSA/CMVSS
1B1 CODES/STANDARDS USA
1B1 265

WINNEBAGO
COPYRIGHT 2014
WINNEBAGO
INDUSTRIES, INC.

DFT-ORIG	ORIG. DATE
CHKR	ALL DIMENSIONS ARE IN MILLIMETERS
P.E.	
M.E.	FIRST USED
DSNR	14 600-SERIES
UNSPECIFIED TOLERANCES ARE:	
WHOLE DIM (X)	: 3
ONE-PLACE (X.X)	: 1.5
TWO-PLACE (X.XX)	: 0.50
ANGLE	: 1°
THIRD ANGLE PROJECTION	
DO NOT SCALE DRAWING	REFER TO ES0018 FOR FASTENER TIGHTENING GUIDELINES
TITLE: RADIO/MONITOR INSTL	
SHEET 1 OF 3	PART NO 184709 REV

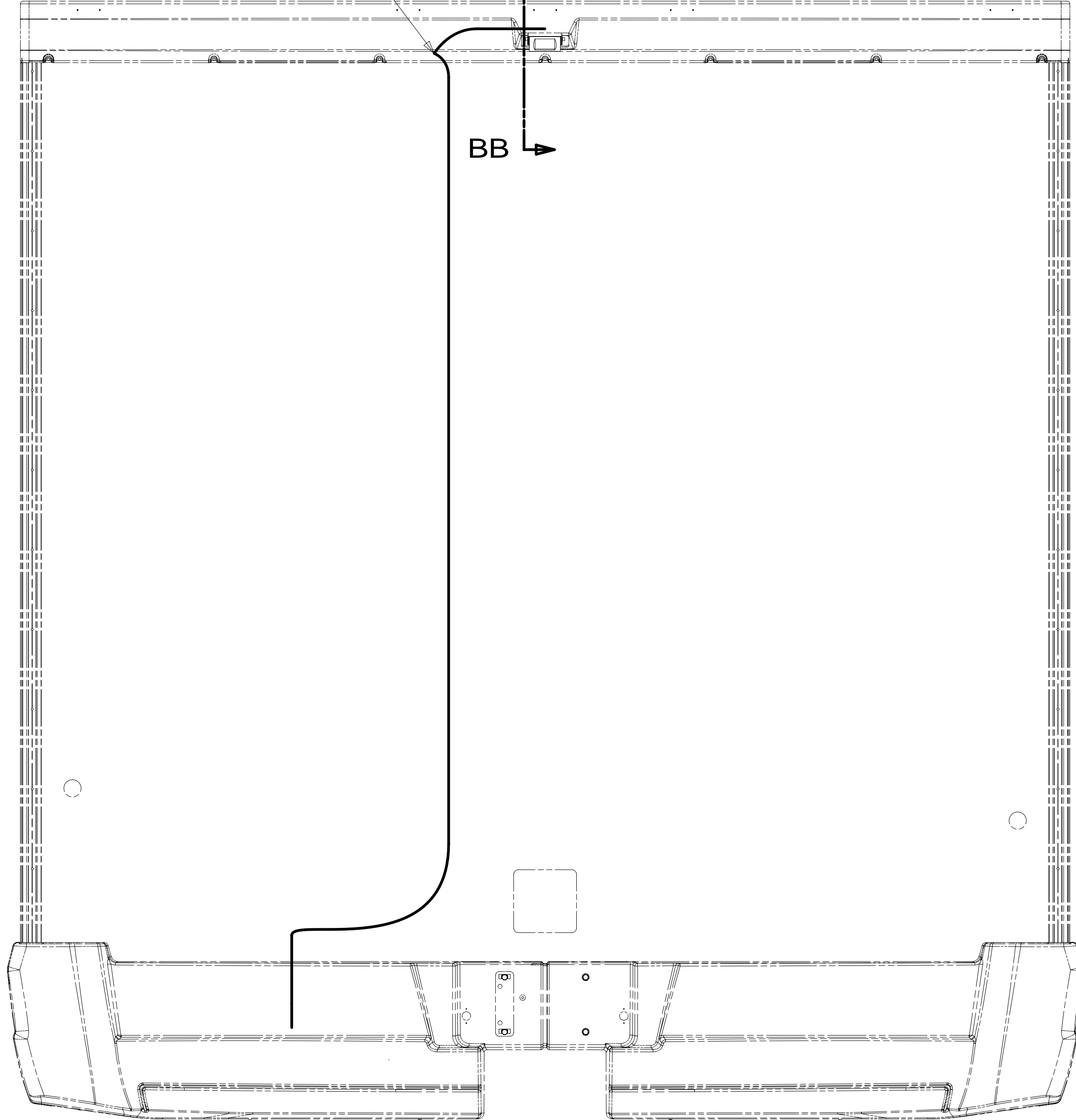
FOR ELECTRICAL TORQUE SPECIFICATIONS SEE DWG NO. 128783-01-000

FOR ELECTRICAL CALLOUTS SEE DWG NO. 121339-01-000

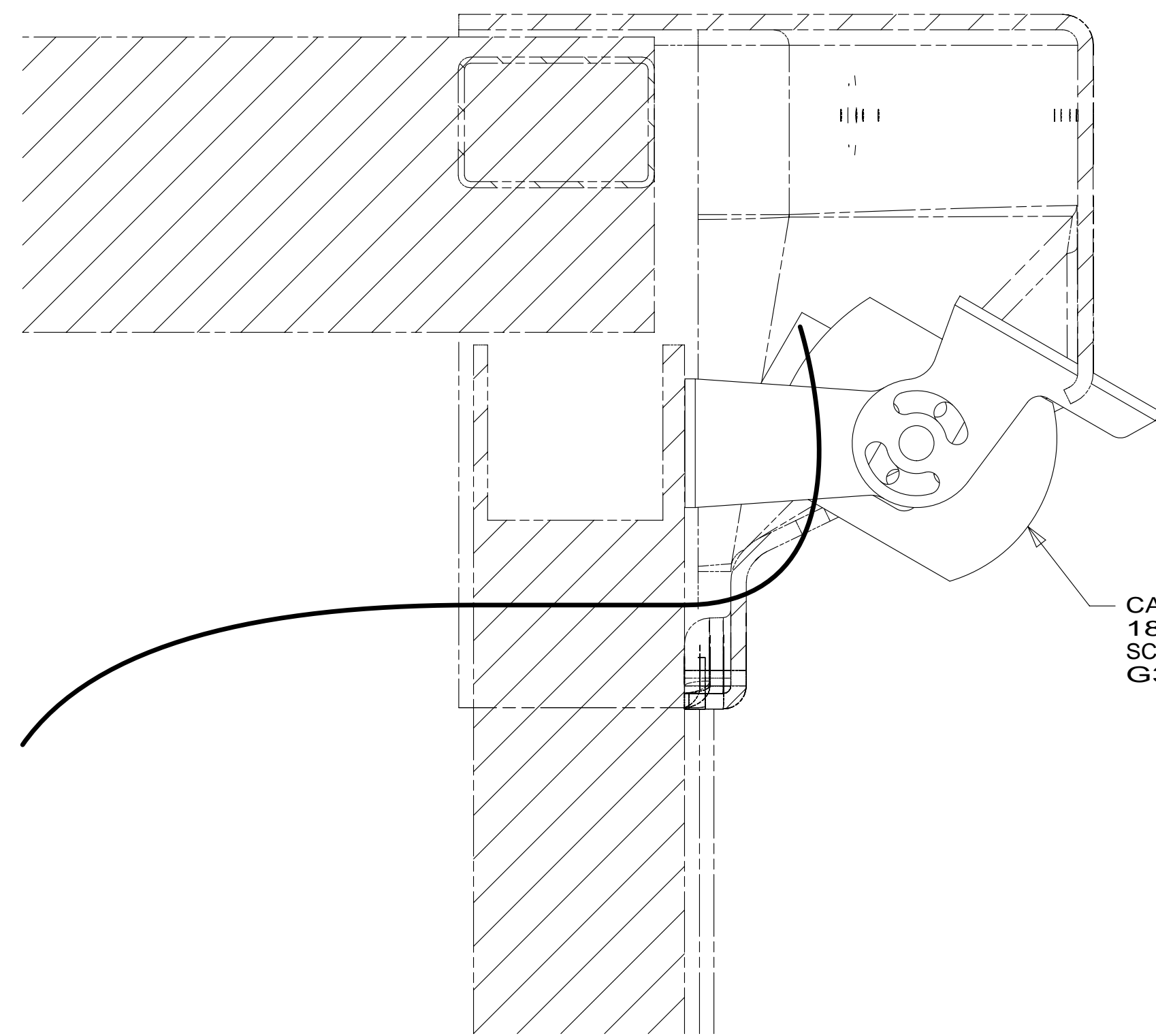
* 184709 *

ROUTE CAMERA CABLE THROUGH BACKWALL

BB
BB



VIEW BA



CAMERA-REAR VIEW
183822-01-000
SCREW
G39-10-12U (5)

SECTION BB-BB

265 CODES/STANDARDS-CSA/CMVSS

1B1 CODES/STANDARDS USA

1B1 265

FIRST USED
14 600-SERIES

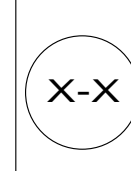
DO NOT SCALE DRAWING

TITLE:
RADIO/MONITOR INSTL

SHEET 2 PART NO **184709** REV

FOR ELECTRICAL TORQUE SPECIFICATIONS SEE DWG NO. 128783-01-000

FOR ELECTRICAL CALLOUTS SEE DWG NO. 121339-01-000

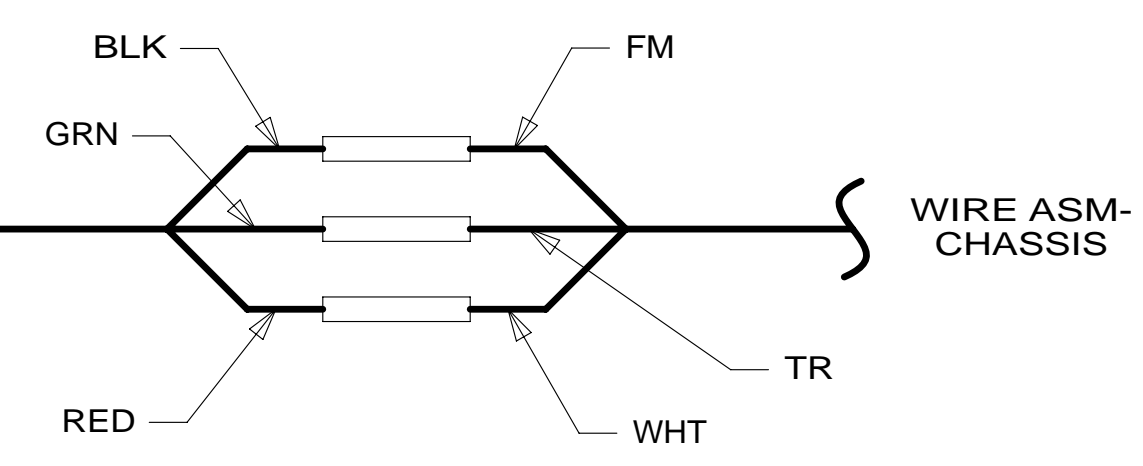


* 184709 * A

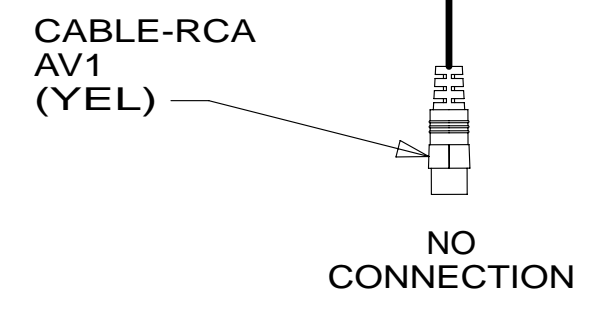


MIRROR-REAR VIEW (REF)

CABLE-ASM (SUPPLIED W/MIRROR)



WIRE ASM-CHASSIS

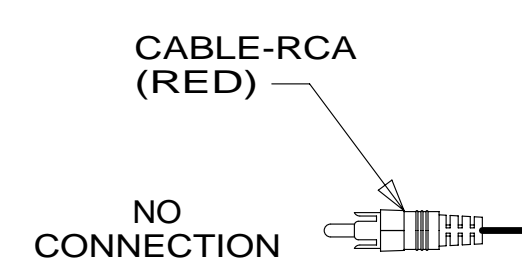


CABLE-RCA AV1 (YEL)

NO CONNECTION

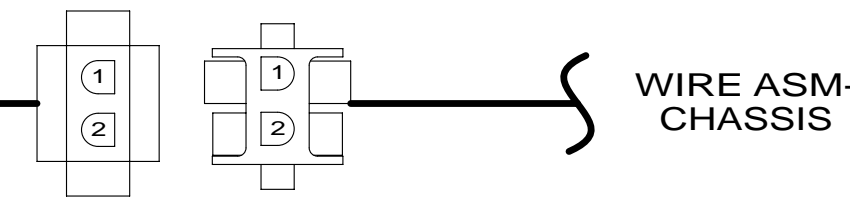
CABLE-RCA AV2 (YEL)

CABLE-RCA (YEL)



CABLE-RCA (RED)

NO CONNECTION



WIRE ASM-CHASSIS

HARNESS-CAMERA ADAPTER 183820-03-000

CABLE-CAMERA (REF)

265 CODES/STANDARDS-CSA/CMVSS

1B1 CODES/STANDARDS USA

1B1 265

FIRST USED 14 600-SERIES

DO NOT SCALE DRAWING

TITLE: RADIO/MONITOR INSTL

SHEET 3 PART NO 184709 REV

FOR ELECTRICAL TORQUE SPECIFICATIONS SEE DWG NO. 128783-01-000

X-X FOR ELECTRICAL CALLOUTS SEE DWG NO. 121339-01-000

* 184709 * A