



**DANGER**

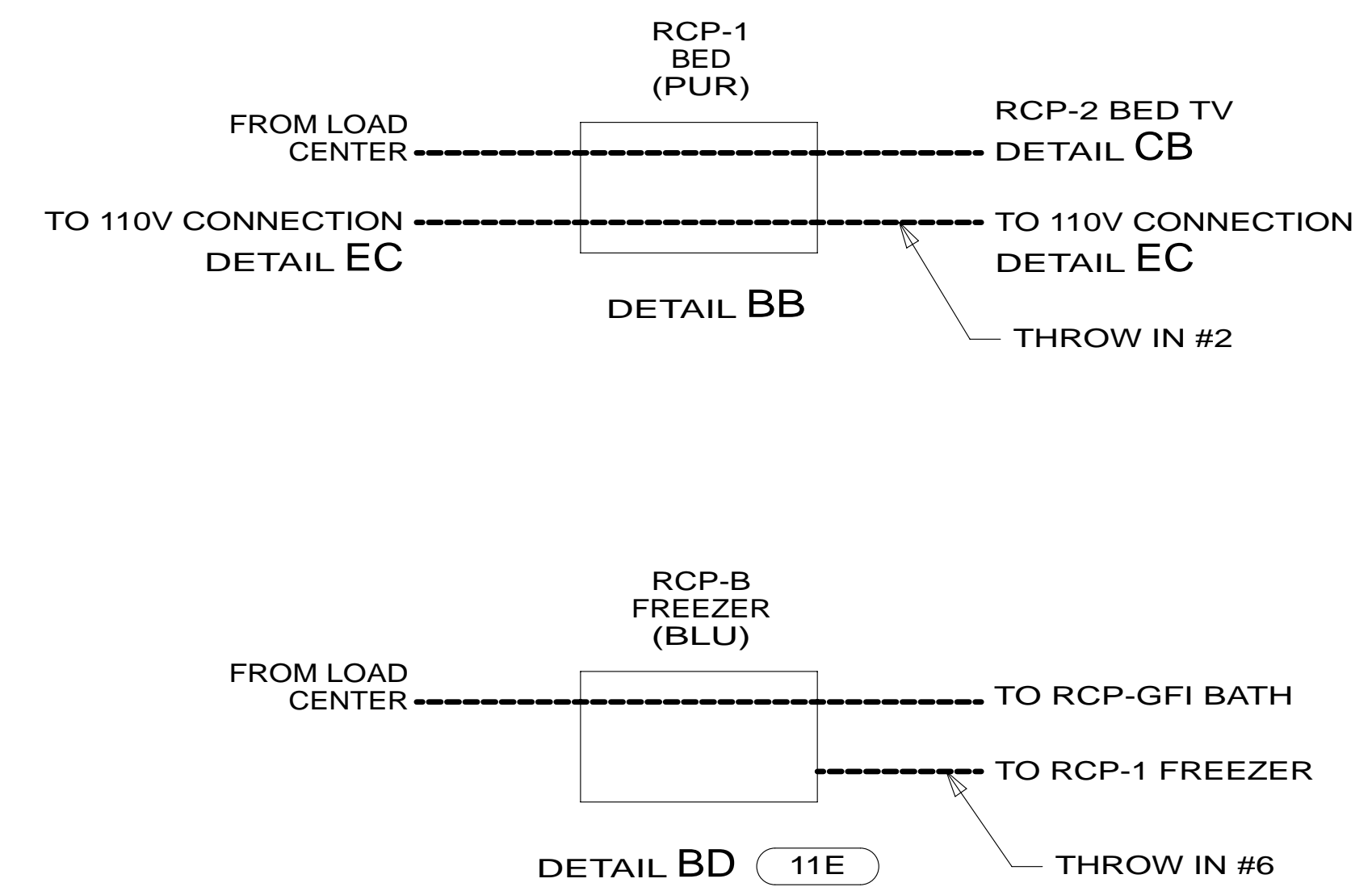
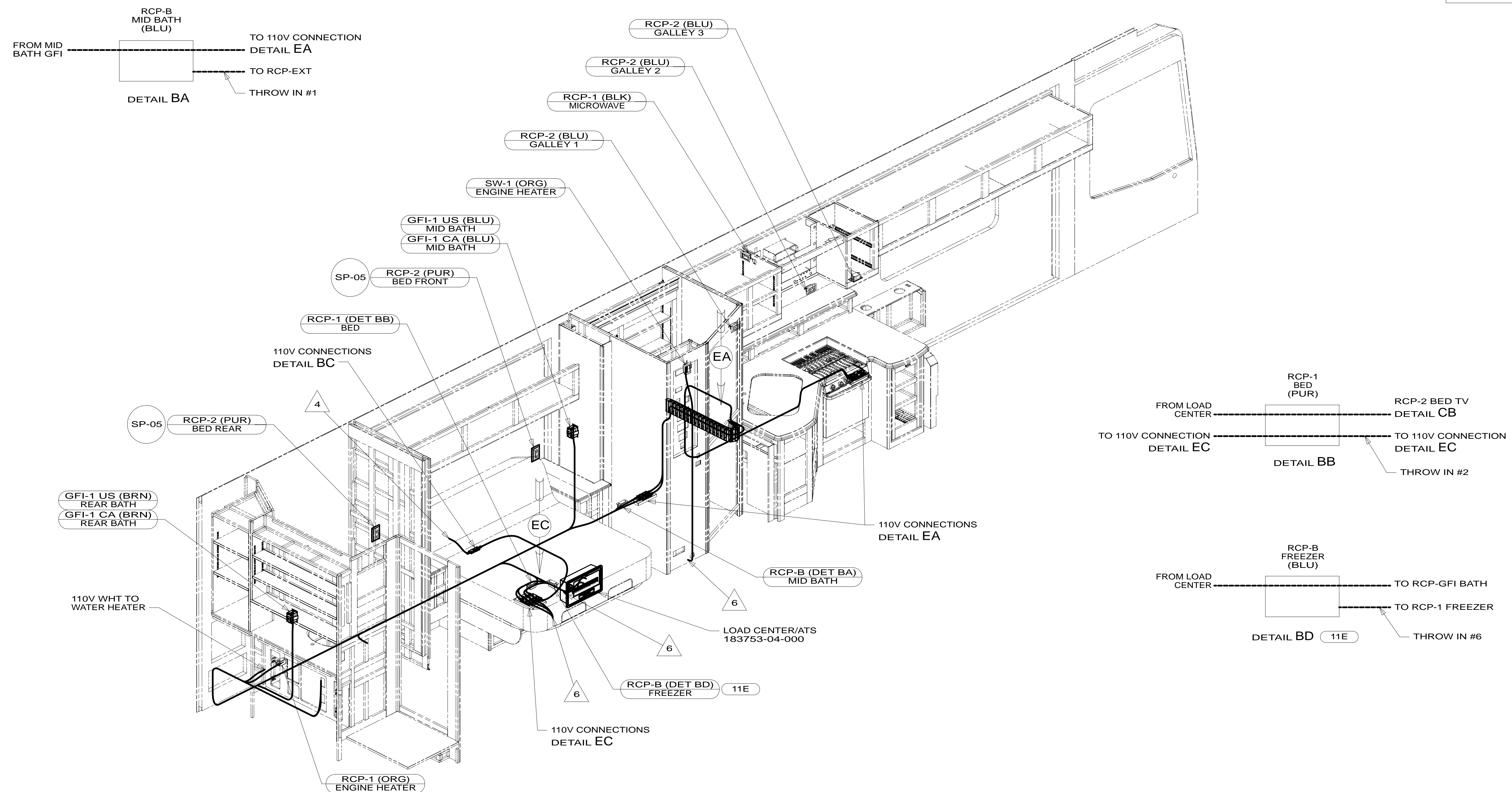
**Danger of electrical shock, burns or death.** Always remove all power sources before attempting any repair, service or diagnostic work. Power can be present from shore power, generator, inverter or battery. All power sources must be disabled and secured before performing any service.



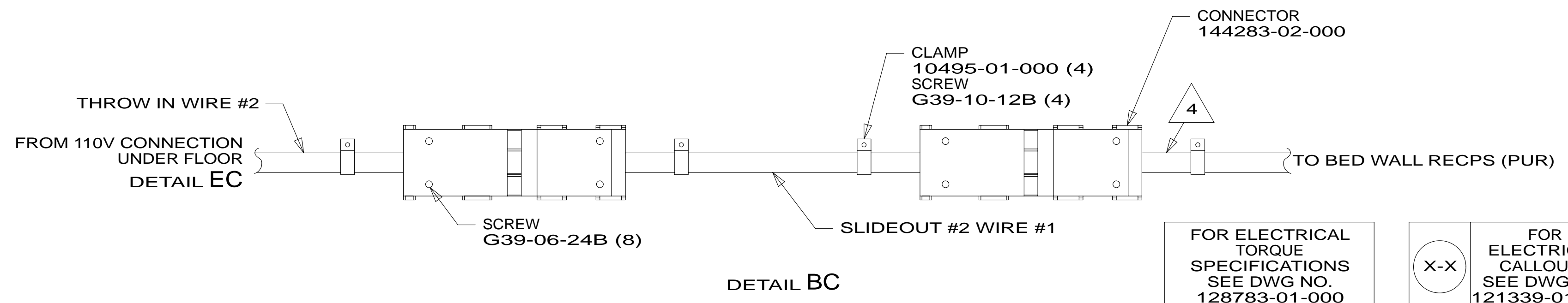
**CAUTION**

If you lack the skills, tools or equipment to perform diagnostic or repair work leave such work to an authorized Winnebago Industries dealer or other qualified shop.





- 6 TO BELOW FLOOR.  
 5 MOUNT TO SIDEWALL.  
 4 WIRE ROUTED IN SIDEWALL.  
 3 SEE WIRING INSTL-TV/DVD FOR ADDITIONAL INFORMATION.
2. ALL 110V WIRES TO BE CLAMPED WITH CLAMP 10497-05-000 WITHIN 200MM OF OUTLET BOXES, USE SCREW G67-10-12B.
1. ALL WIRES TO BE SECURED WITH CLAMP 10495 OR 10497 OR WIRE TIE 8343 OR 108046 EVERY 600MM, USE SCREW G67-XX-XXX OR G56-XX-XXX AS APPROPRIATE FOR INSTALLATION.



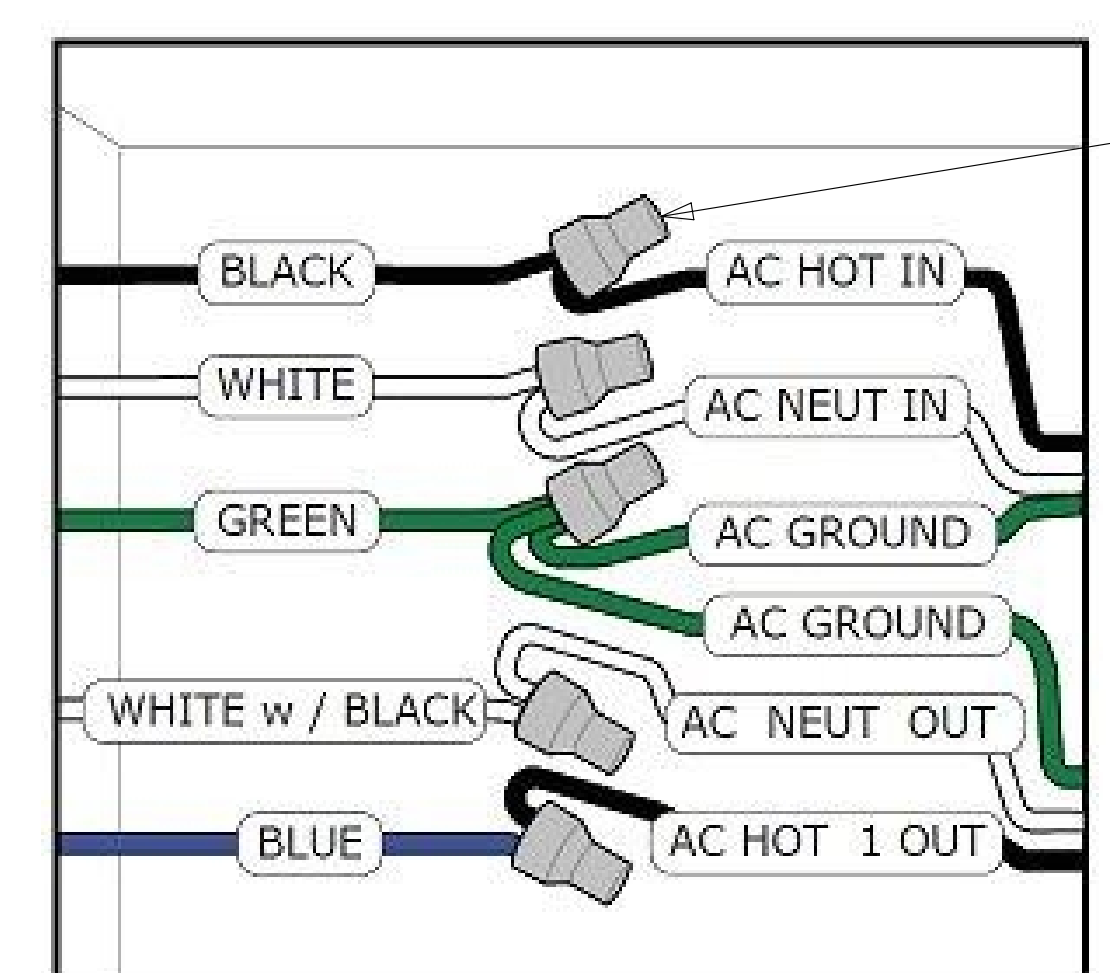
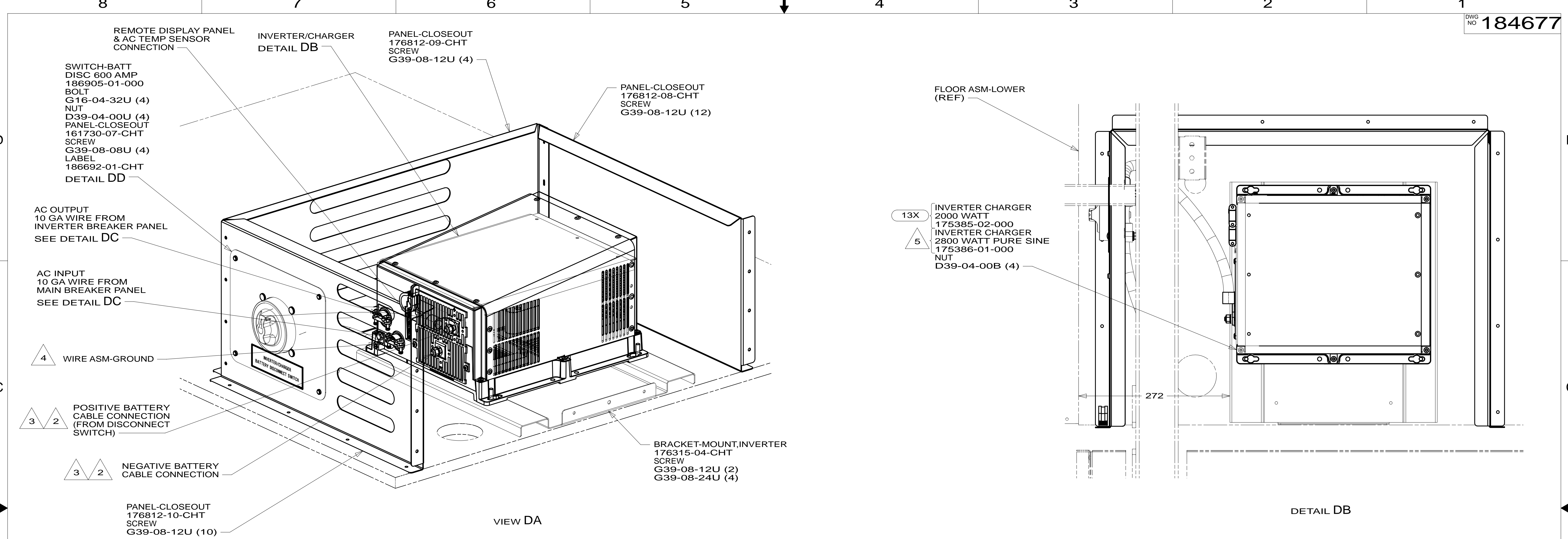
- 11E REFRIGERATOR/FREEZER PORTABL  
 265 CODES/STANDARDS-CSA/CMVSS  
 1B1 CODES/STANDARDS USA

FIRST USED	
<b>14 P42E</b>	
DO NOT SCALE DRAWING	
TITLE: <b>WIRING INSTL-BODY, 110V</b>	
SHEET 2	PART NO <b>184677</b> REV

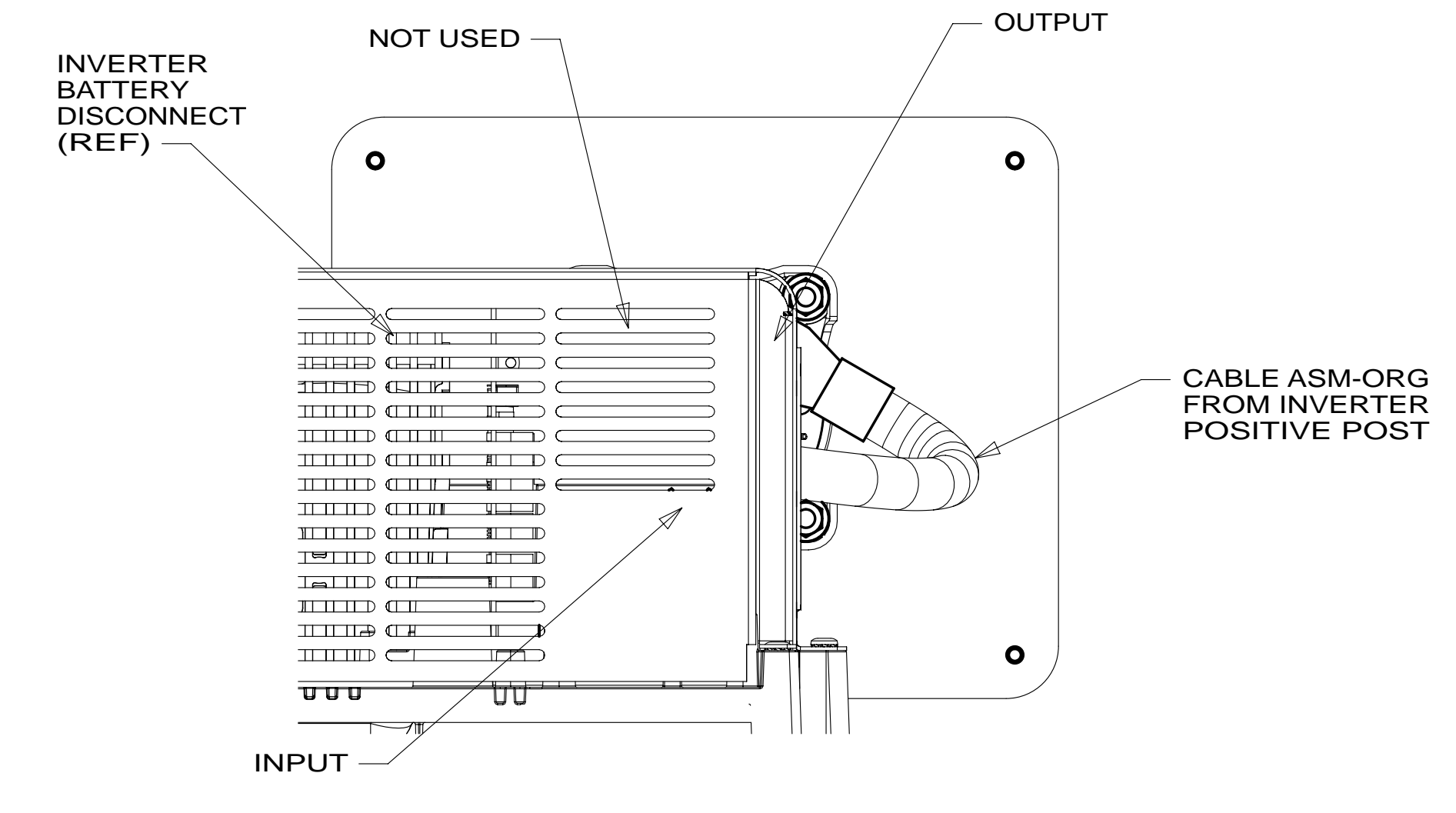
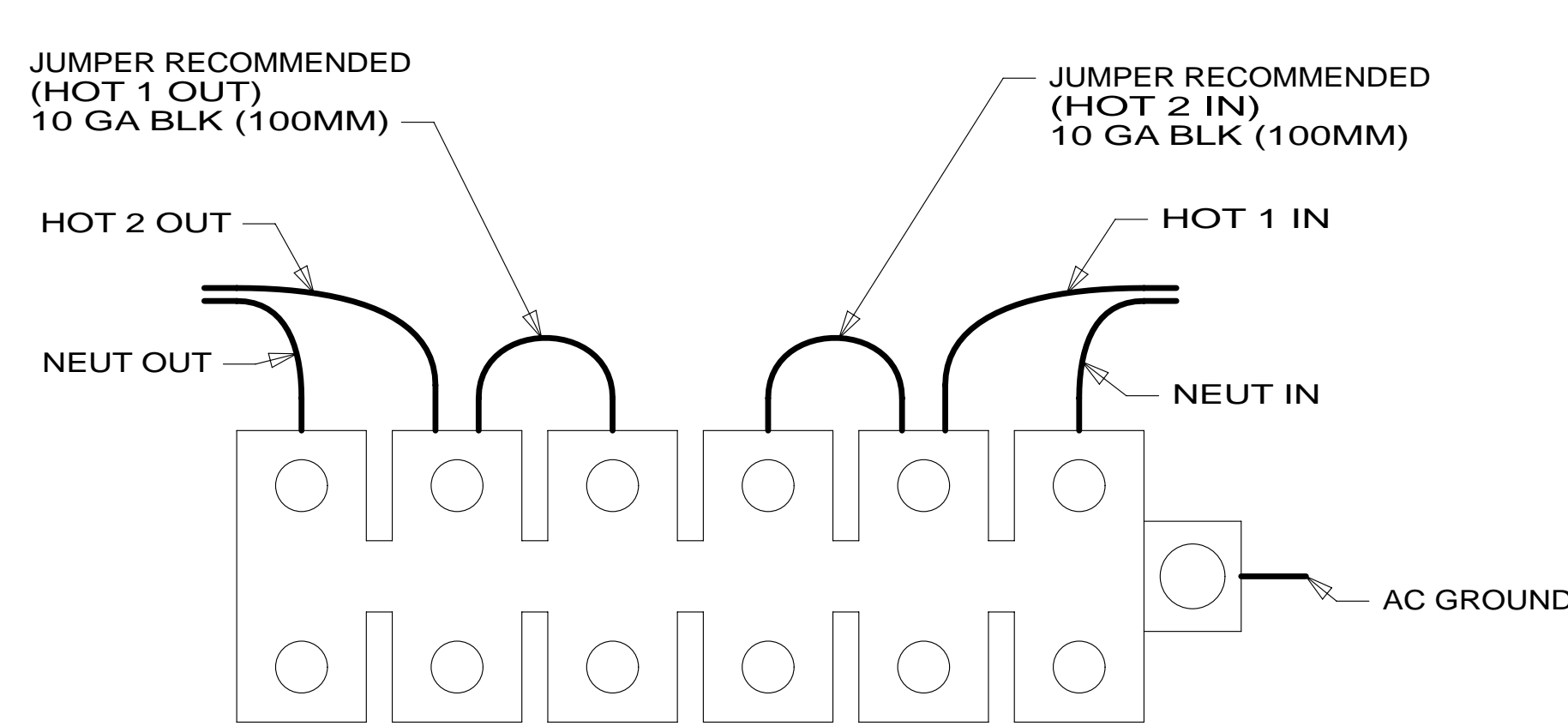
FOR ELECTRICAL TORQUE SPECIFICATIONS SEE DWG NO. 128783-01-000

FOR ELECTRICAL CALLOUTS SEE DWG NO. 121339-01-000





CONNECTOR-WIRE 008311-01-000 (5)



- NOTES:
- 5 USED WITHOUT OPTION 13X
  - 4 SEE LOAD CENTER/ATS ASM FOR ADDITIONAL INFORMATION.
  - 3 DO NOT USE POWER/AIR TOOL TO INSTALL NUT. TORQUE TO 10-12 FT LBS.
  - 2 SEE WIRING INSTL-CHASSIS FOR ADDITIONAL INFORMATION.
1. WIRE MUST BE ROUTED THROUGH CLAMPS AS SHOWN.

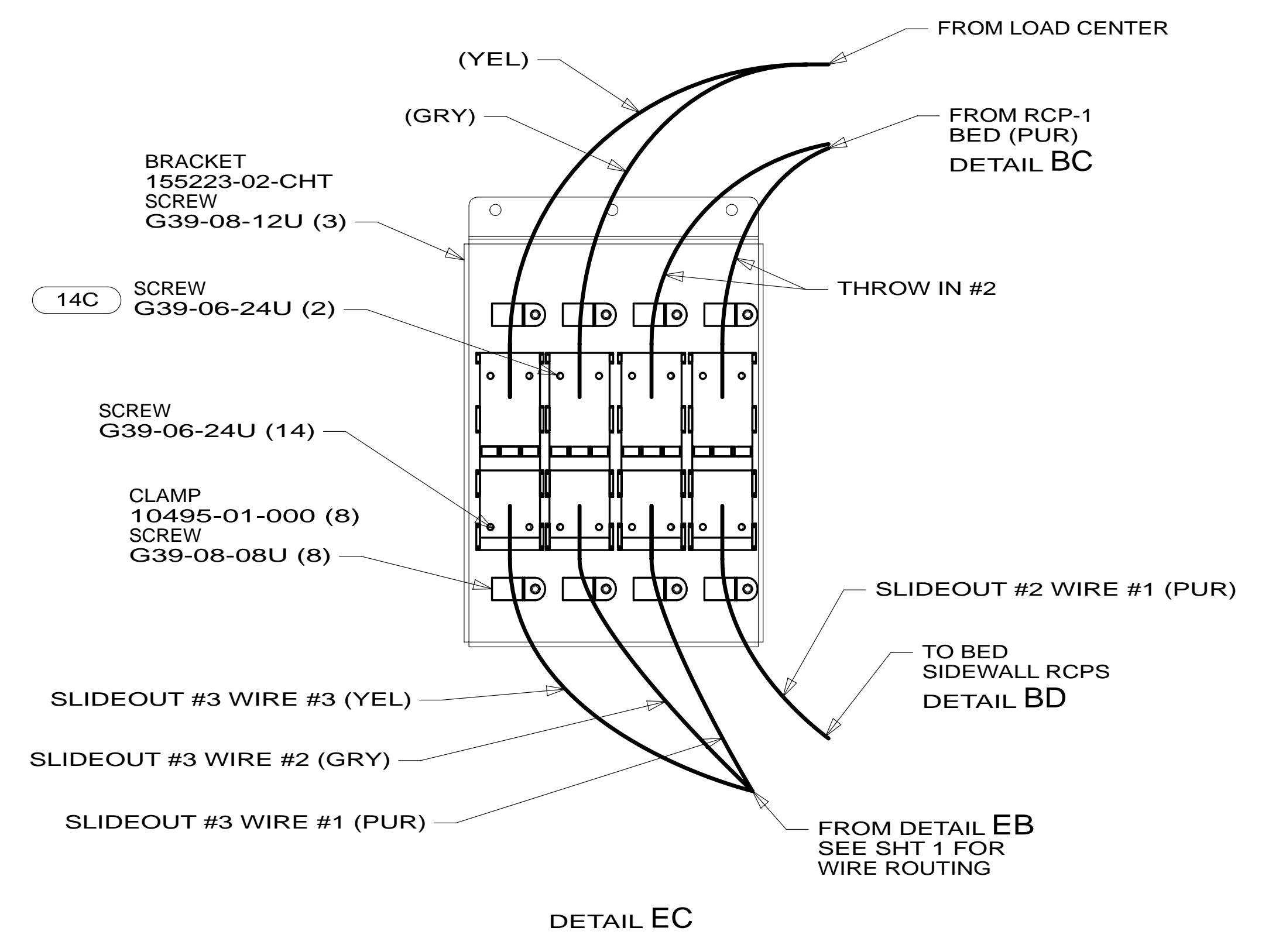
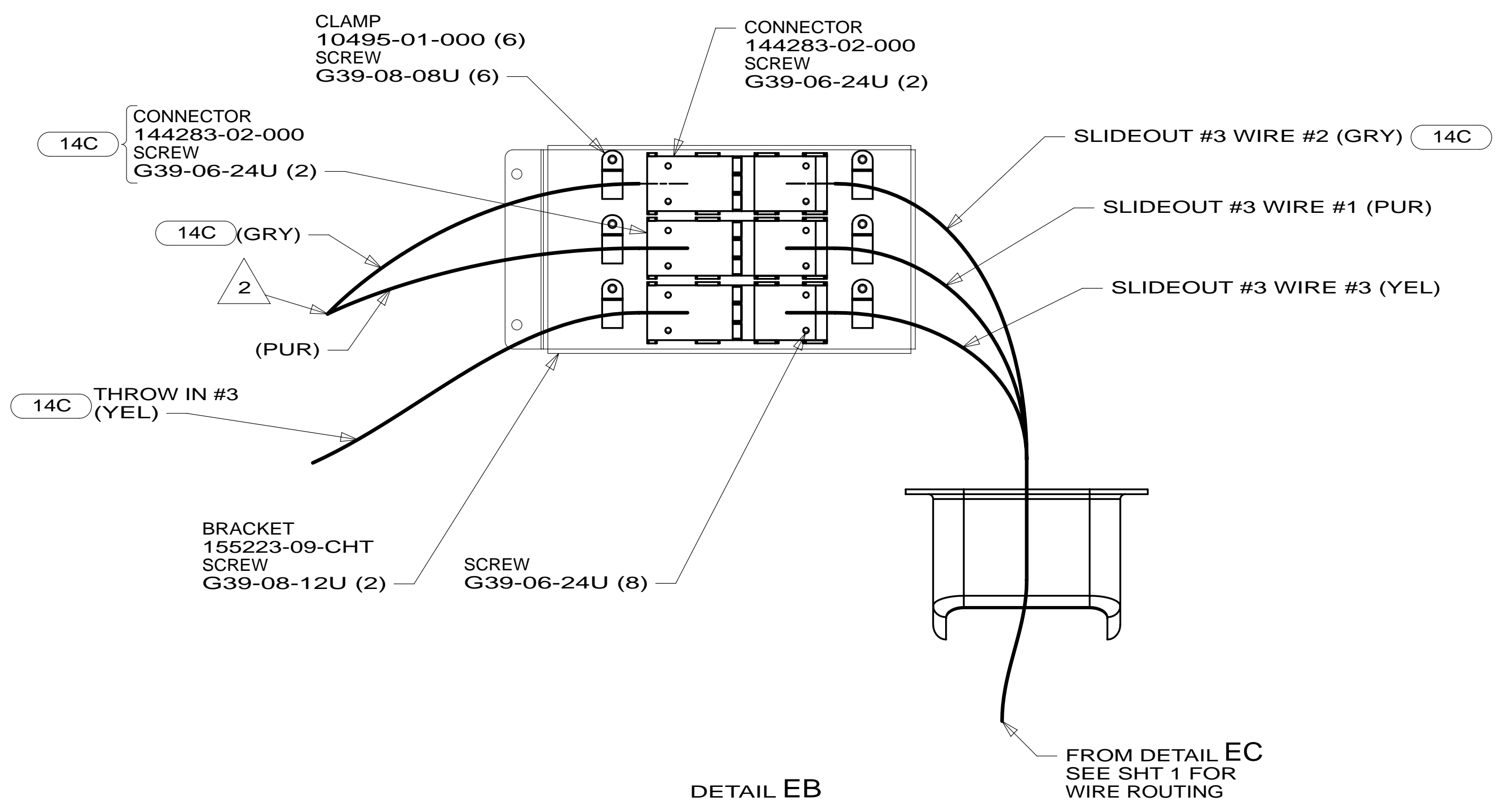
FOR ELECTRICAL TORQUE SPECIFICATIONS SEE DWG NO. 128783-01-000

FOR ELECTRICAL CALLOUTS SEE DWG NO. 121339-01-000

- 13X INVERTER/CHARGER 2.0 KW
- 265 CODES/STANDARDS-CSA/CMVSS
- 1B1 CODES/STANDARDS USA
- 1B1 265

FIRST USED	<b>14 P42E</b>	
DO NOT SCALE DRAWING		
TITLE:	<b>WIRING INSTL-BODY, 110V</b>	
SHEET 4	PART NO <b>184677</b>	REV

\* 184677 \*



- NOTES:
- 3 110V CONNECTORS ARE LOCATED UNDER FLOOR.
  - 2 WIRE ROUTED IN SIDEWALL.
  - 1 110V CONNECTORS ARE MOUNTED TO RIGHT SIDEWALL.

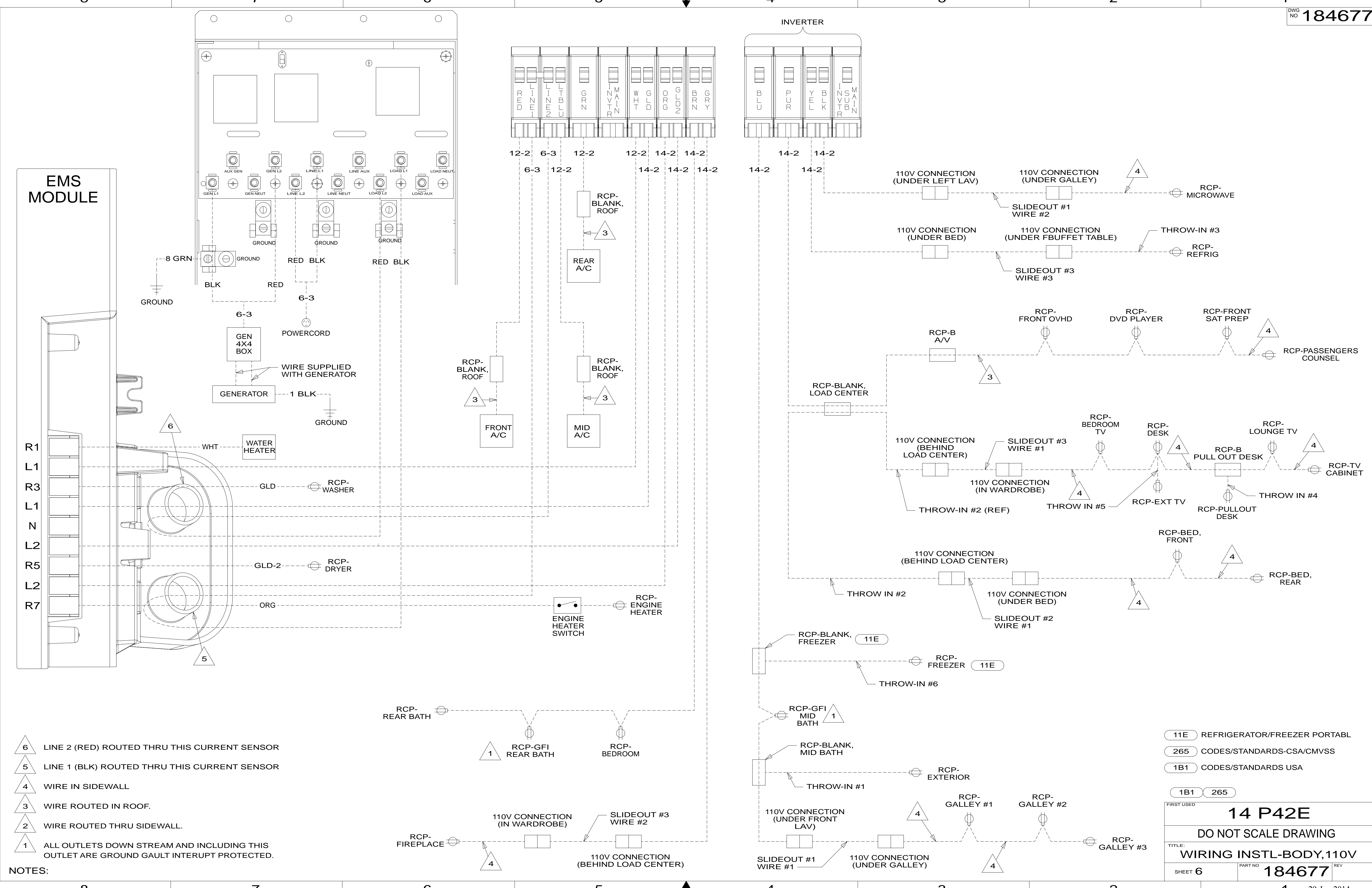
FOR ELECTRICAL  
TORQUE  
SPECIFICATIONS  
SEE DWG NO.  
128783-01-000

FOR  
ELECTRICAL  
CALLOUTS  
SEE DWG NO.  
121339-01-000

- 14C FIREPLACE-ELECTRIC
- 265 CODES/STANDARDS-CSA/CMVSS
- 1B1 CODES/STANDARDS USA

FIRST USED		14 P42E	
DO NOT SCALE DRAWING			
TITLE: WIRING INSTL-BODY, 110V			
SHEET 5	PART NO	184677	REV
		29-Jan-2014	

\* 184677 \* A



EMS MODULE

INVERTER

- R1
- L1
- R3
- L1
- N
- L2
- R5
- L2
- R7

- 6 LINE 2 (RED) ROUTED THRU THIS CURRENT SENSOR
- 5 LINE 1 (BLK) ROUTED THRU THIS CURRENT SENSOR
- 4 WIRE IN SIDEWALL
- 3 WIRE ROUTED IN ROOF.
- 2 WIRE ROUTED THRU SIDEWALL.
- 1 ALL OUTLETS DOWN STREAM AND INCLUDING THIS OUTLET ARE GROUND GAULT INTERUPT PROTECTED.

NOTES:

- 11E REFRIGERATOR/FREEZER PORTABL
- 265 CODES/STANDARDS-CSA/CMVSS
- 1B1 CODES/STANDARDS USA

FIRST USED

**14 P42E**

DO NOT SCALE DRAWING

TITLE: **WIRING INSTL-BODY, 110V**

SHEET 6 PART NO **184677** REV

29-Jan-2014

\* 184677 \* A