



**DANGER**

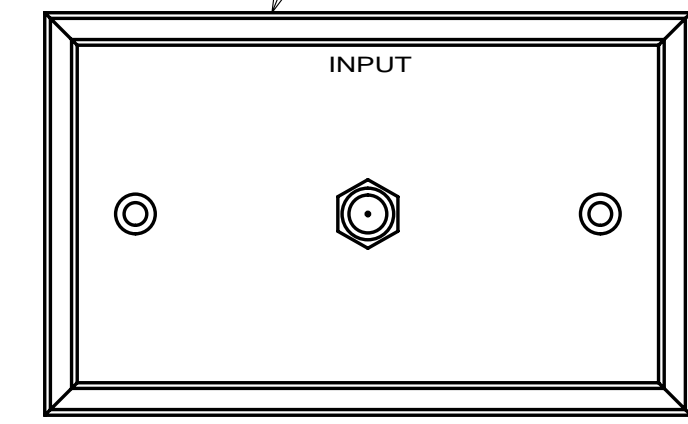
**Danger of electrical shock, burns or death.** Always remove all power sources before attempting any repair, service or diagnostic work. Power can be present from shore power, generator, inverter or battery. All power sources must be disabled and secured before performing any service.



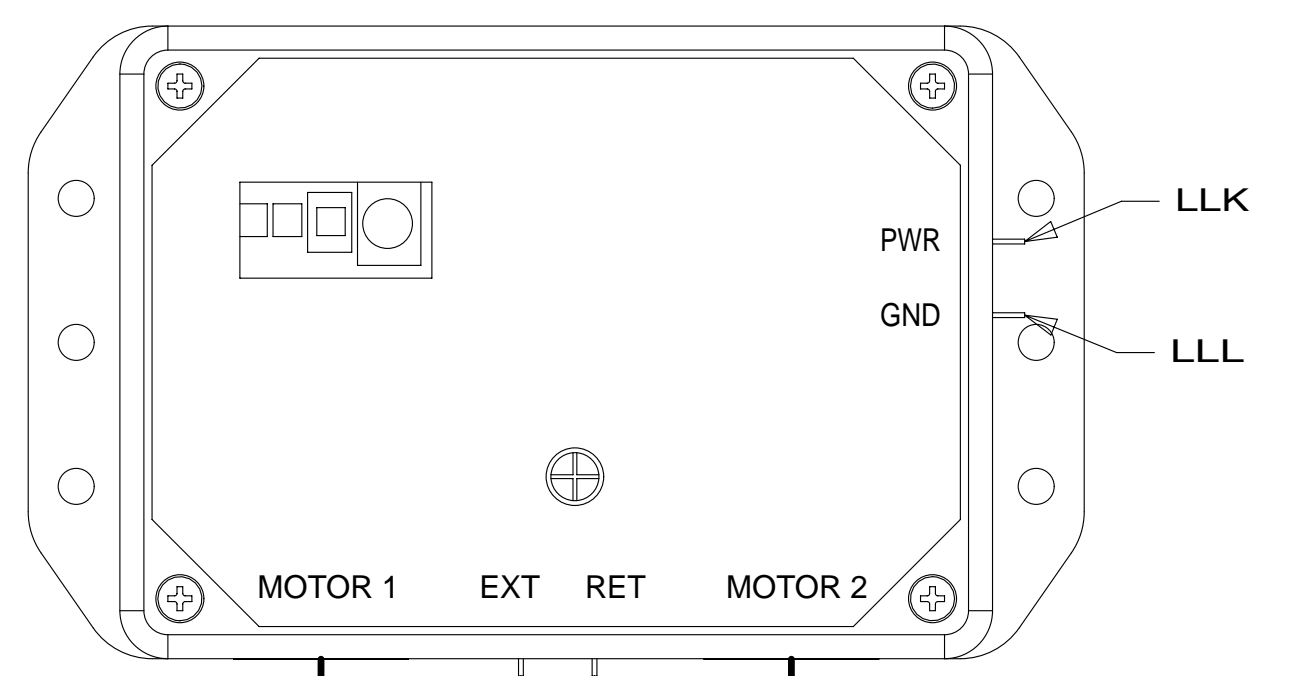
**CAUTION**

If you lack the skills, tools or equipment to perform diagnostic or repair work leave such work to an authorized Winnebago Industries dealer or other qualified shop.

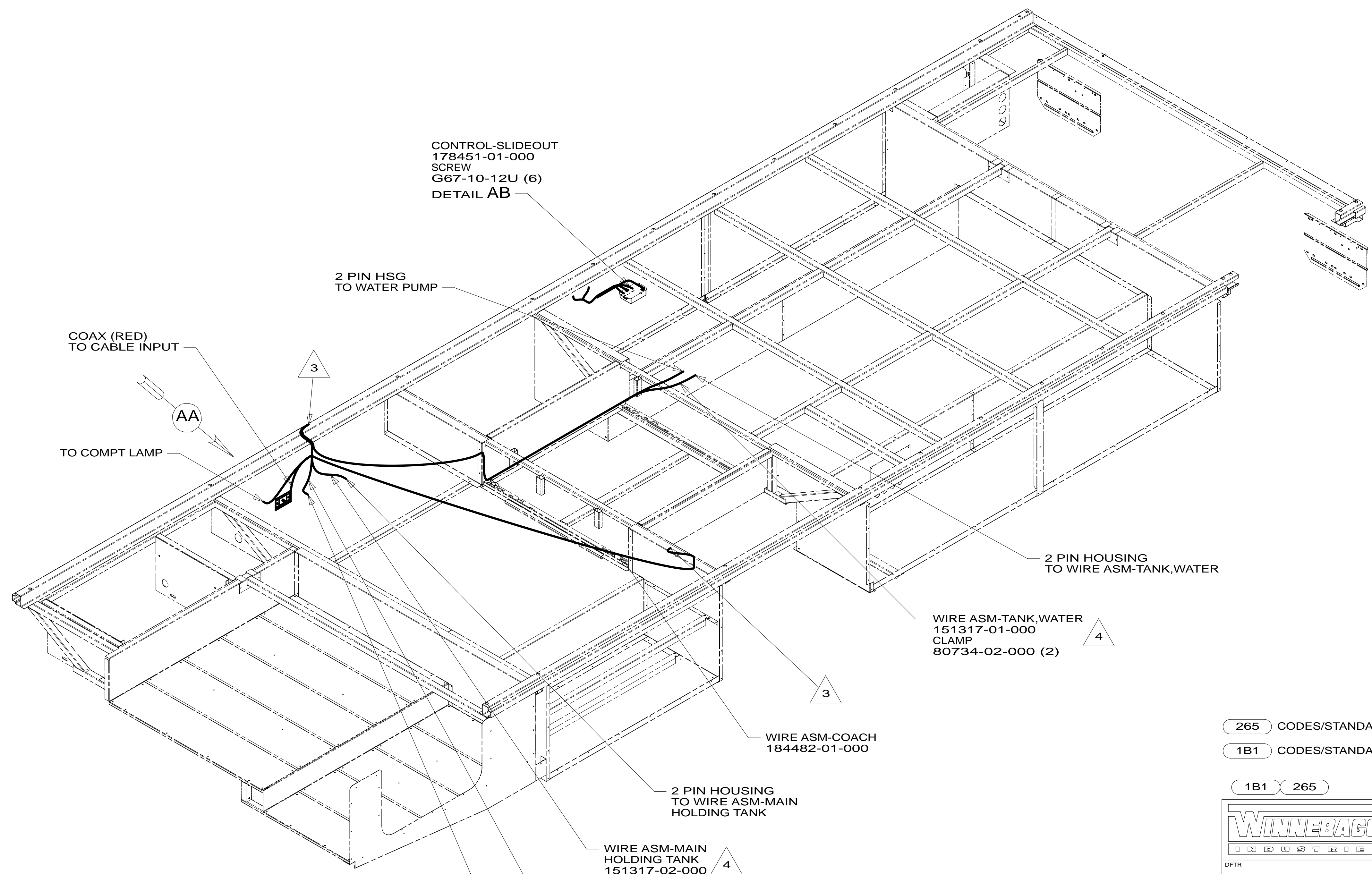
PLATE-WALL, DUAL COAX  
 149557-07-CHT  
 SCREW  
 G39-08-08U (2)



VIEW AA



DETAIL AB



HARNESS-SLIDEOUT MOTOR 178398-01-000  
 ROUTE TO REAR MOTOR  
 DR  
 DU  
 ROUTE TO FRONT MOTOR  
 HARNESS-SLIDEOUT MOTOR 178398-03-000

- NOTES:
1. ALL WIRES TO BE SECURED WITH CLAMP 10495 OR 10497 OR WIRE TIE 8343 OR 108046 EVERY 600MM, USE SCREW G67-XX-XXX OR G56-XX-XXX AS APPROPRIATE FOR INSTALLATION.
  2. ROUTE TANK SENSOR WIRES SO THEY DO NOT PASS OVER SENSORS. USE WIRE TIE MOUNT 155366-01-000 AND WIRE TIE 8343-01-000 AS NEEDED. TANK SURFACE MUST BE CLEANED USING ISOPROPYL ALCOHOL AND PRIMED WITH PRIMER 94.

- 4 PLACE CROSS LOCATOR ON SENSORS OVER DIMPLES ON TANK.
- 3 WIRE PASSES THROUGH FLOOR IN THIS AREA.

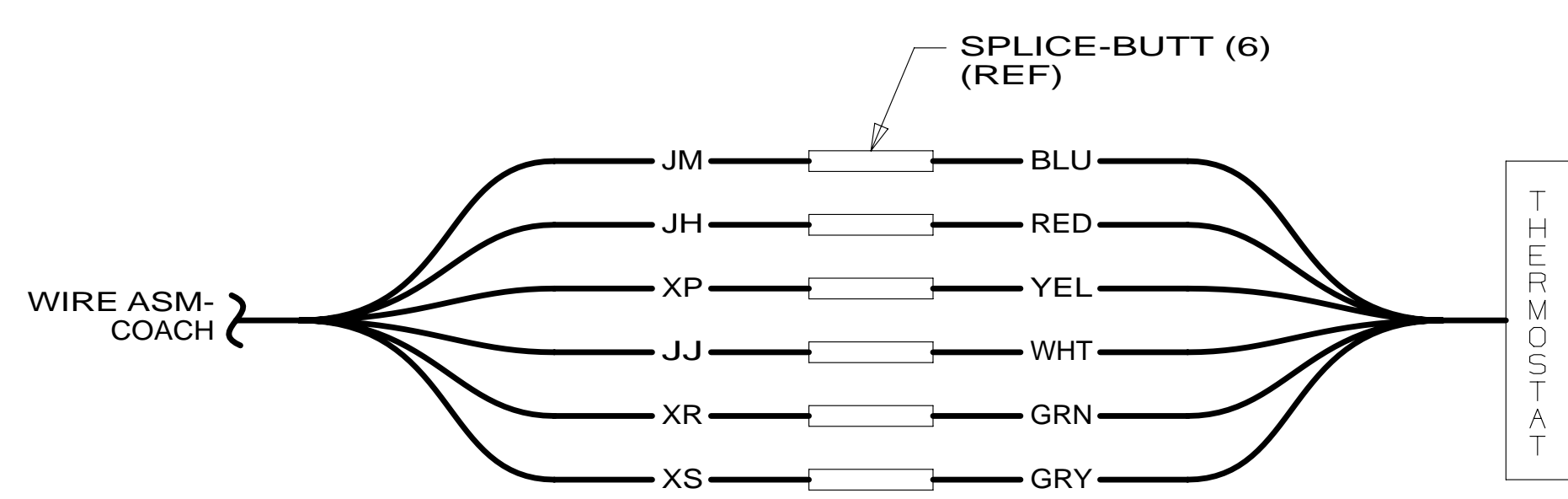
FOR ELECTRICAL TORQUE SPECIFICATIONS SEE DWG NO. 128783-01-000

FOR ELECTRICAL CALLOUTS SEE DWG NO. 121339-01-000

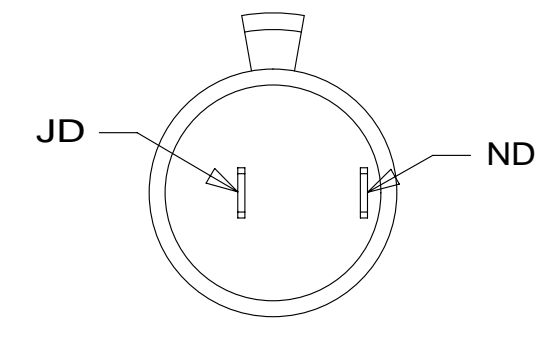
- 265 CODES/STANDARDS-CSA/CMVSS
- 1B1 CODES/STANDARDS USA
- 1B1 265

		COPYRIGHT 2014 WINNEBAGO INDUSTRIES, INC.
DFTR	ORIG. DATE	
CHKR	ALL DIMENSIONS ARE IN MILLIMETERS	
P.E.		
M.E.	FIRST USED	
DSNR	<b>14 E31KE</b>	
UNSPECIFIED TOLERANCES ARE:		MATERIAL:
WHOLE DIM (X)	: 3	
ONE-PLACE (X.X)	: 1.5	
TWO-PLACE (X.XX)	: 0.50	
ANGLE	: 1°	
THIRD ANGLE PROJECTION		
DO NOT SCALE DRAWING		REFER TO ES0018 FOR FASTENER TIGHTENING GUIDELINES
TITLE: <b>WIRING INSTL-BODY, 12V</b>		
SHEET 1 OF 7	PART NO. <b>184479</b>	REV
REF:	1	09-Jul-2014

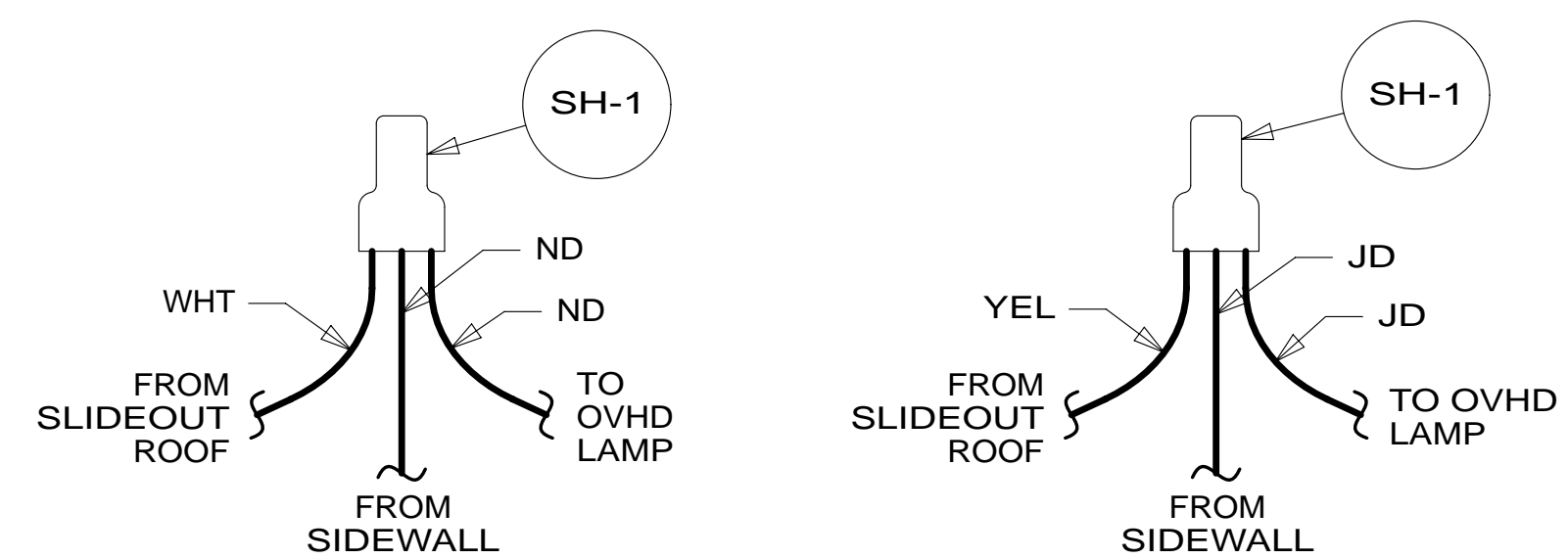
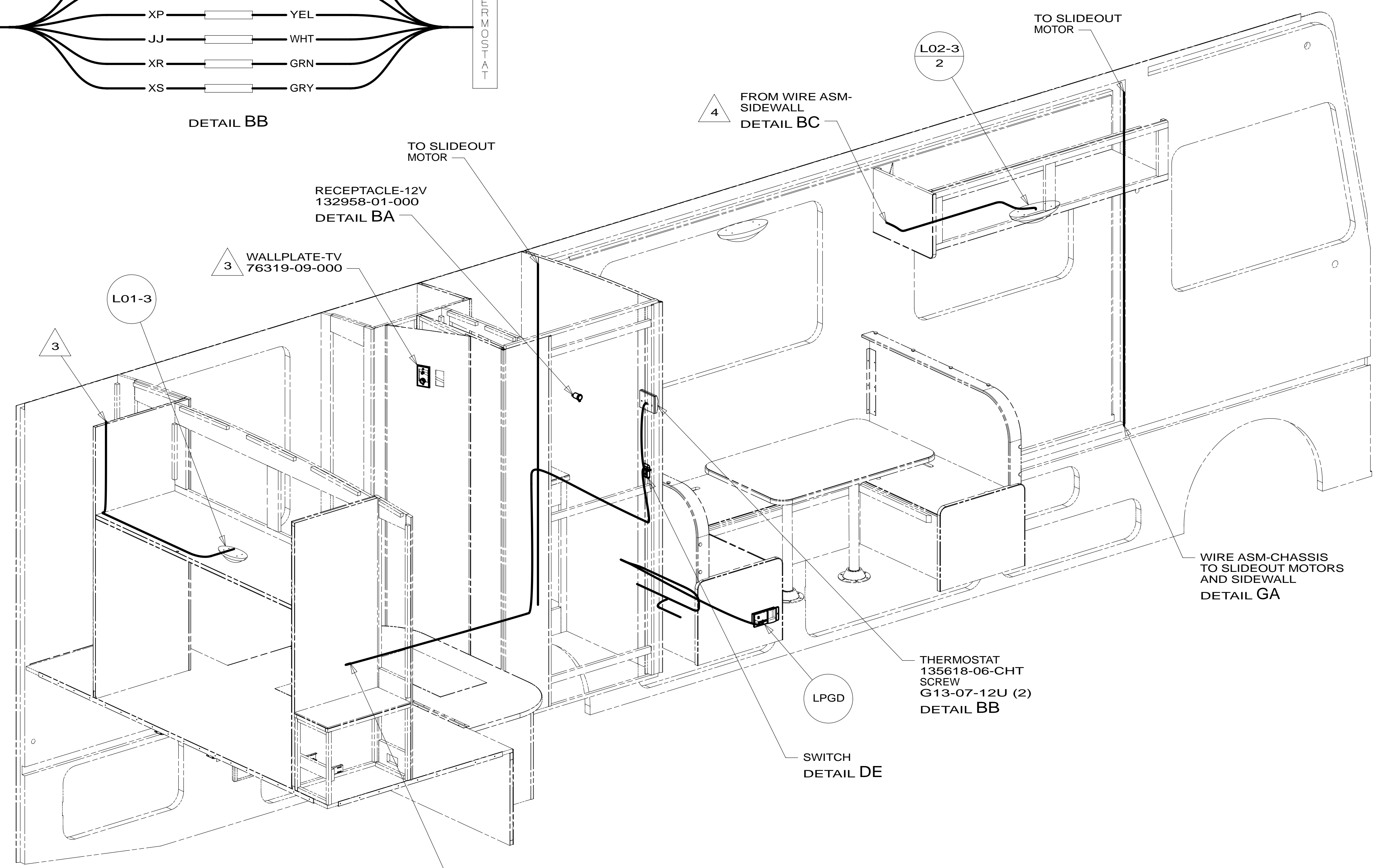
\* 184479 \*



DETAIL BB



DETAIL BA



DETAIL BC

- 4 CUT THE JD,ND WIRES FROM THE SIDEWALL AND RECONNECT AS SHOWN IN DETAIL BC.
- 3 WIRE FROM ROOF.
- 2 WIRE PASSES THROUGH FLOOR IN THIS AREA.

1. ALL WIRES TO BE SECURED WITH CLAMP 10495 OR 10497 OR WIRE TIE 8343 OR 108046 EVERY 600MM, USE SCREW G67-XX-XXX OR G56-XX-XXX AS APPROPRIATE FOR INSTALLATION.

NOTES:

265 CODES/STANDARDS-CSA/CMVSS  
1B1 CODES/STANDARDS USA

1B1 265

FIRST USED **14 E31KE**

DO NOT SCALE DRAWING

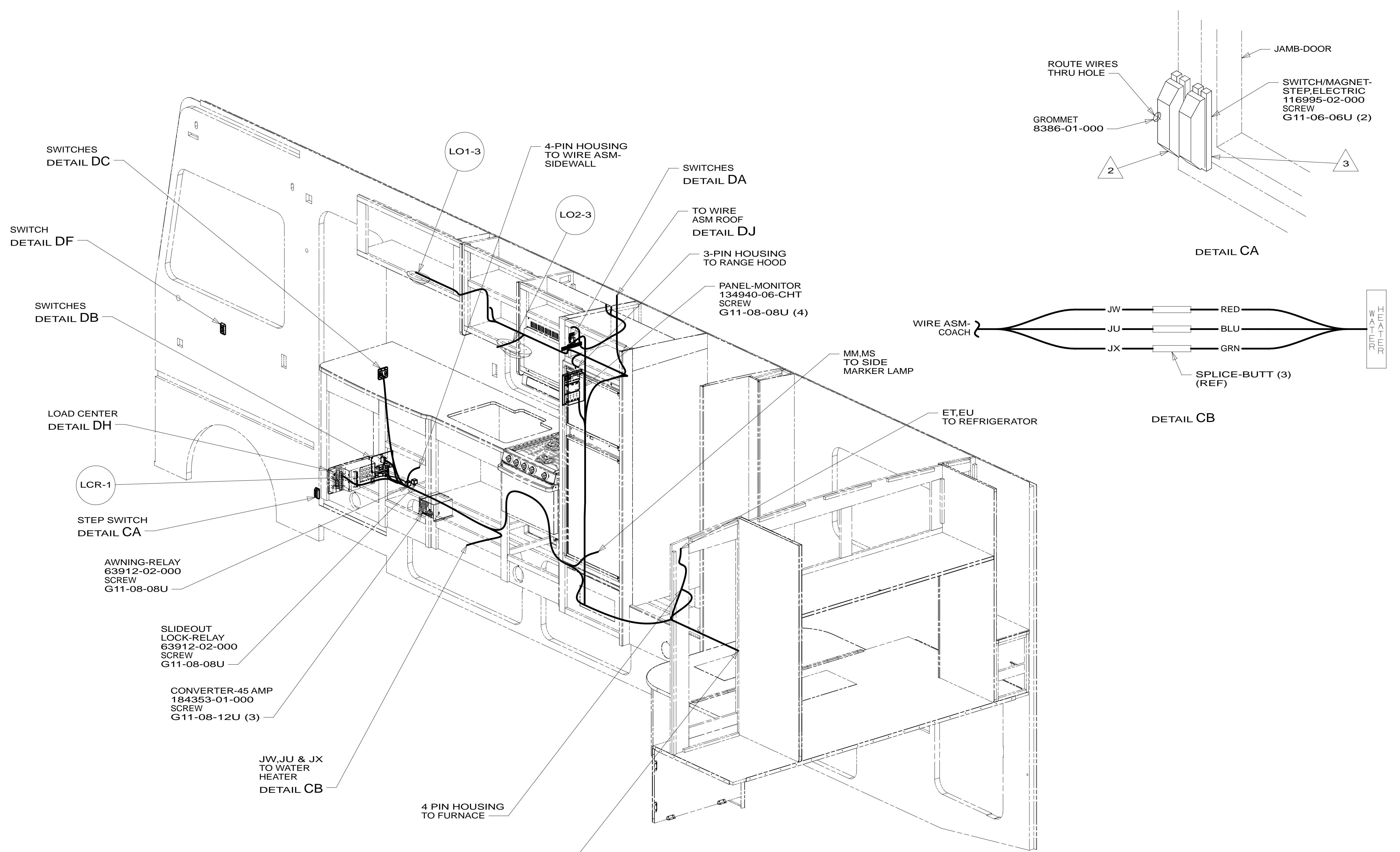
TITLE: **WIRING INSTL-BODY,12V**

SHEET 2 PART NO **184479** REV

FOR ELECTRICAL TORQUE SPECIFICATIONS SEE DWG NO. 128783-01-000

FOR ELECTRICAL CALLOUTS SEE DWG NO. 121339-01-000

\*184479 \*A



- 4 WIRE PASSES THROUGH FLOOR IN THIS AREA.
- 3 MOUNT MAGNET TO SCREEN DOOR FRAME, MOUNT WITH MAGNET TOWARD SWITCH.
- 2 MOUNT SWITCH TO DOOR JAMB WITH TAPE 076322-21-000.

1. ALL WIRES TO BE SECURED WITH CLAMP 10495 OR 10497 OR WIRE TIE 8343 OR 108046 EVERY 600MM, USE SCREW G67-XX-XXX OR G56-XX-XXX AS APPROPRIATE FOR INSTALLATION.

NOTES:

265 CODES/STANDARDS-CSA/CMVSS  
 1B1 CODES/STANDARDS USA

1B1 265

FIRST USED **14 E31KE**

DO NOT SCALE DRAWING

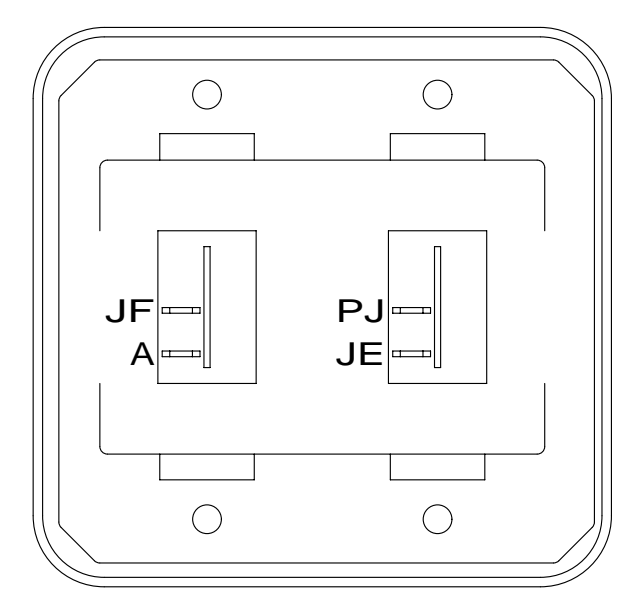
TITLE: **WIRING INSTL-BODY,12V**

SHEET 3 PART NO **184479** REV

FOR ELECTRICAL TORQUE SPECIFICATIONS SEE DWG NO. 128783-01-000

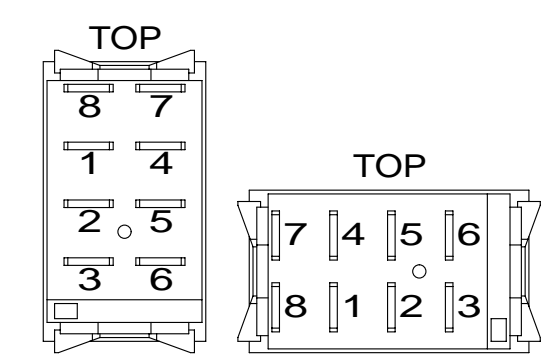
FOR ELECTRICAL CALLOUTS SEE DWG NO. 121339-01-000

\* 184479 \* A

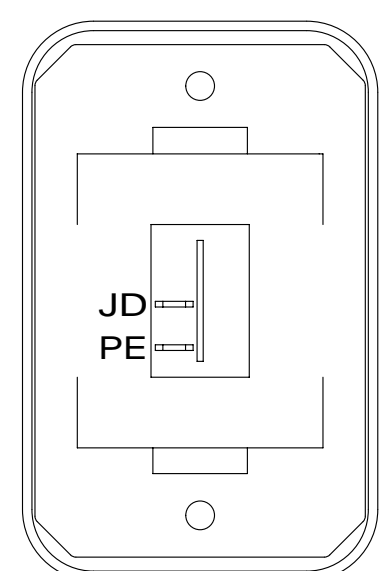


SWITCH-ROCKER  
135740-01-CHT (2)  
SWITCH-BASE  
135741-02-CHT  
SWITCH-BEZEL  
135742-02-CHT  
SCREW  
G11-08-08U (4)

DETAIL DC

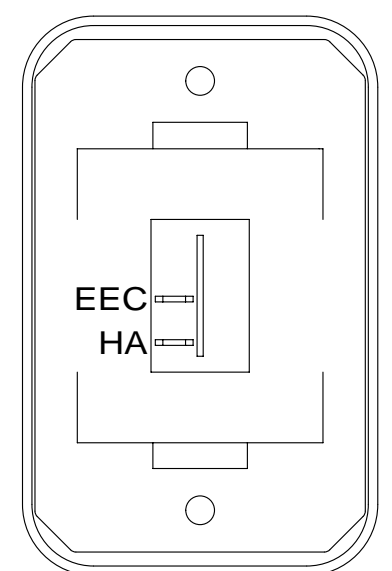


DETAIL DD



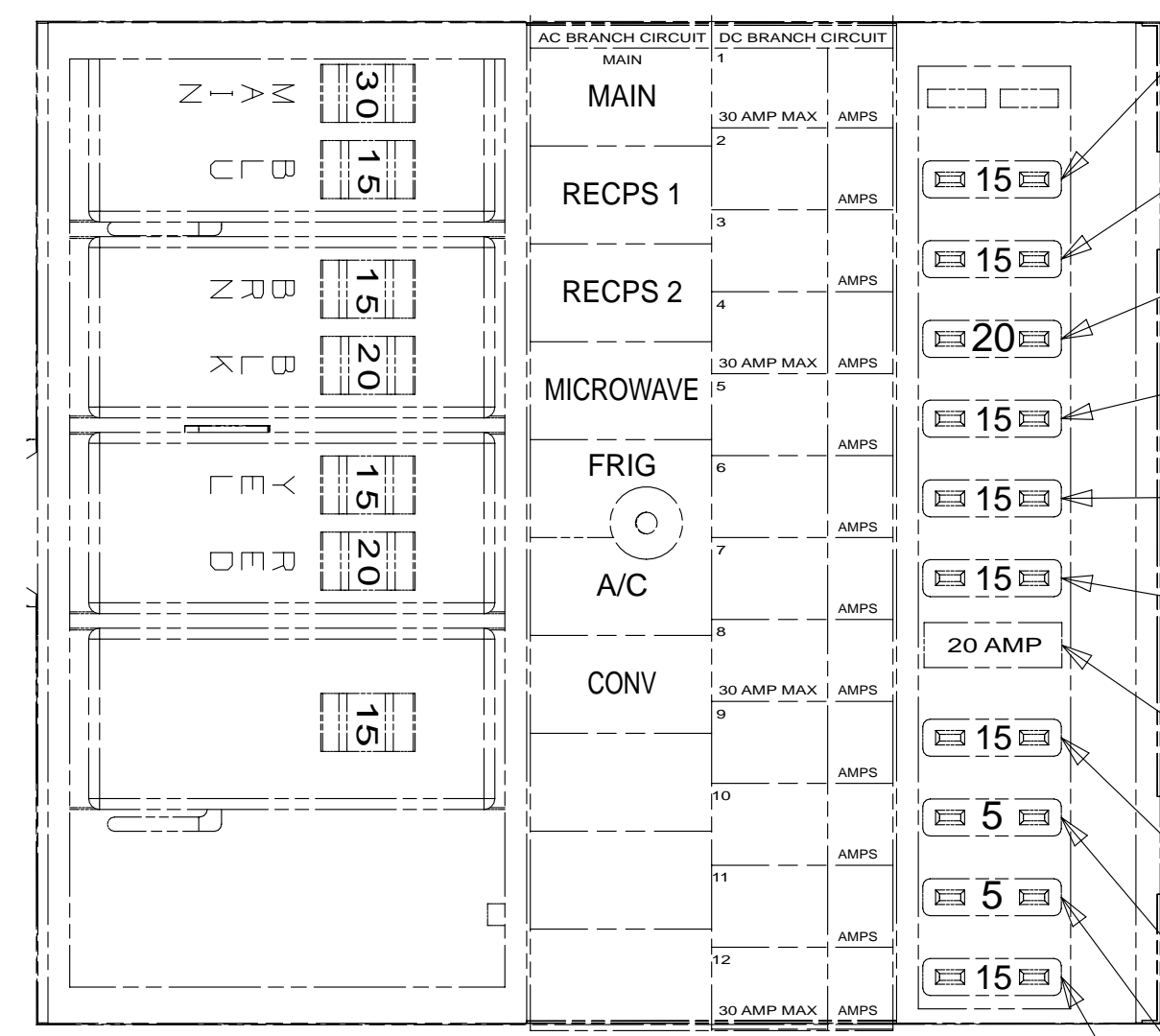
SWITCH-ROCKER  
135740-01-CHT  
SWITCH-BASE  
135741-01-CHT  
SWITCH-BEZEL  
135742-01-CHT  
SCREW  
G11-08-08U (2)

DETAIL DE



SWITCH-ROCKER  
135740-01-CHT  
SWITCH-BASE  
135741-01-CHT  
SWITCH-BEZEL  
135742-01-CHT  
SCREW  
G11-08-08U (2)

DETAIL DF 45B



DETAIL DH

- JA 12 YEL (WATER PUMP) (ISOLATED CIRCUIT)
- JB 14 YEL (FURNACE)
- EEC 12 YEL (LOFT BED) 45B
- JC 14 YEL (LAMPS)
- JD 14 YEL (LAMPS)
- JE 14 YEL (MONITOR PANEL AND LAMPS)
- NM 12 YEL (DRAIN PUMP) (ISOLATED CIRCUIT)
- JF 14 YEL (AUDIO/VIDEO)
- ET 16 YEL (REFRIG)
- WB 16 YEL (LP LEAK DETECTOR)
- WC COMPT LAMPS

DRIVER'S SIDE FRONT



LABEL-SLIDEOUT, DRIVER, FRONT  
163992-01-CHT

SWITCH  
108357-07-000  
ACTUATOR  
108356-24-CHT  
CIRCUITS  
DR,DT,DU

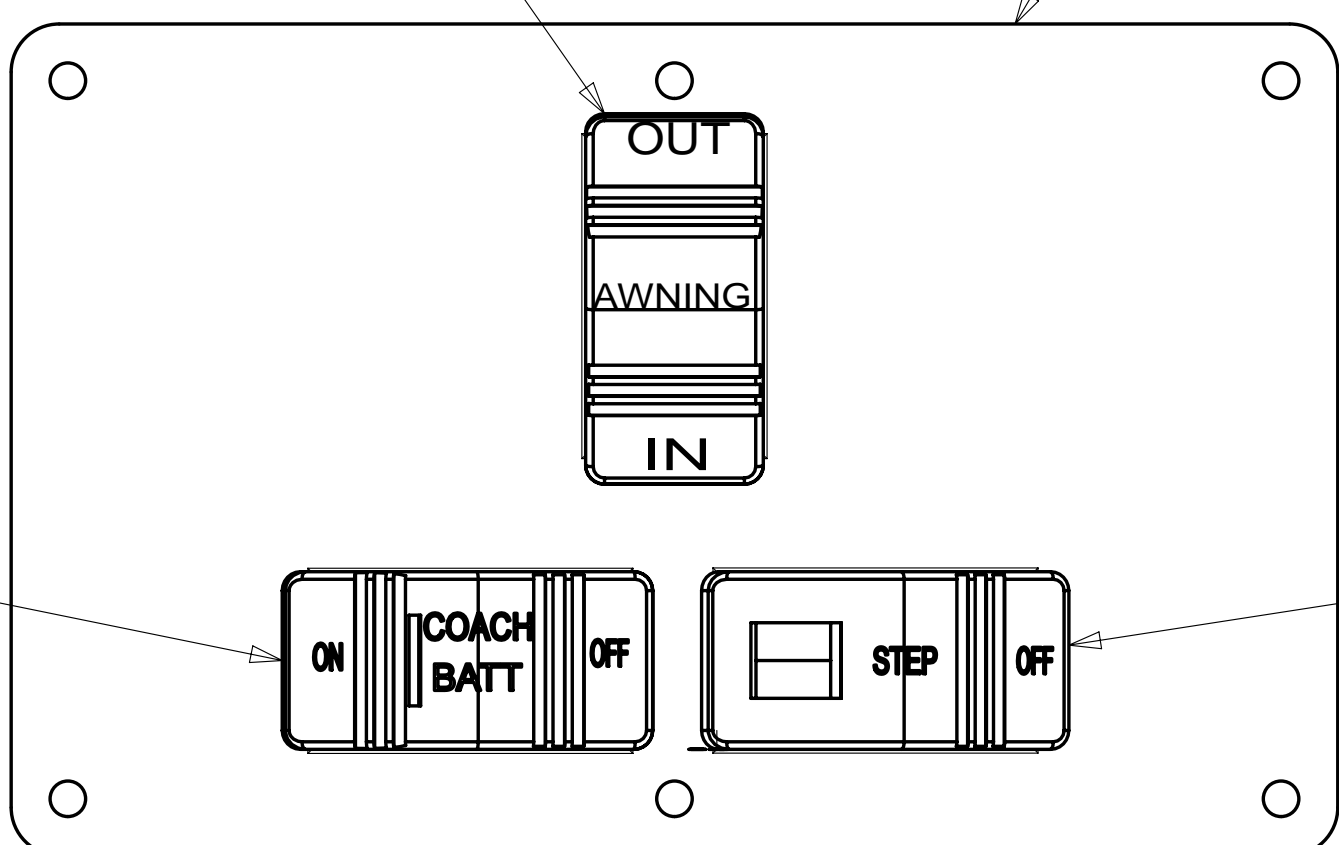
**WARNING** CRUSH HAZARD. Keep people and objects clear of the inside and the outside of the slideout room when operating. Failure to comply could result in death or serious injury.

LABEL-WARNING, SLIDEOUT  
116549-01-000

DETAIL DA

SWITCH-AWNING  
108357-06-000  
ACTUATOR-SWITCH  
108356-12-CHT  
CIRCUITS  
FFD,FFR,FFE  
FFE,JJR,FFD

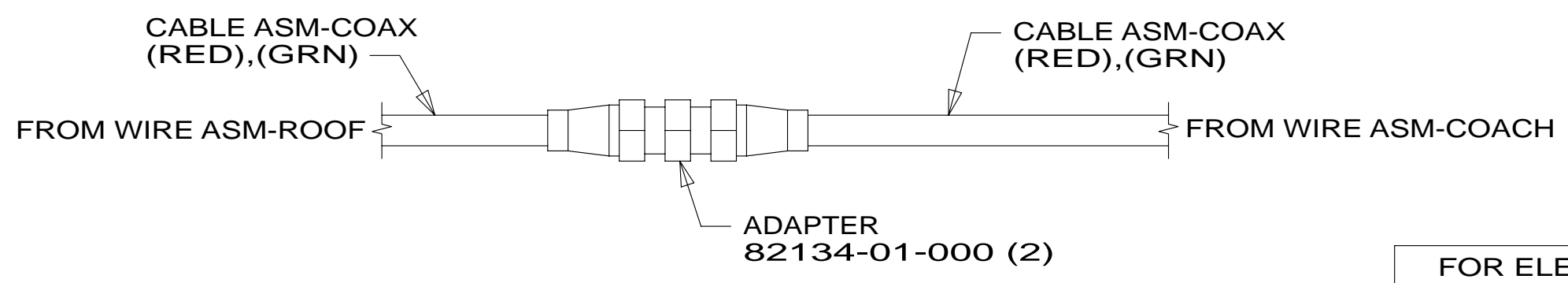
PLATE-SWITCH  
158431-10-CHT  
SCREW  
G11-06-10U (6)



DETAIL DB 1

SWITCH-COACH BATTERY  
108357-18-000  
ACTUATOR-SWITCH  
108356-19-CHT  
CIRCUITS  
KF,LG,LJ,LH,WC  
WIRE ASM-THERM  
186796-01-000

SWITCH-STEP  
108357-19-000  
CIRCUITS ER,ES



DETAIL DJ

FOR ELECTRICAL TORQUE SPECIFICATIONS SEE DWG NO. 128783-01-000

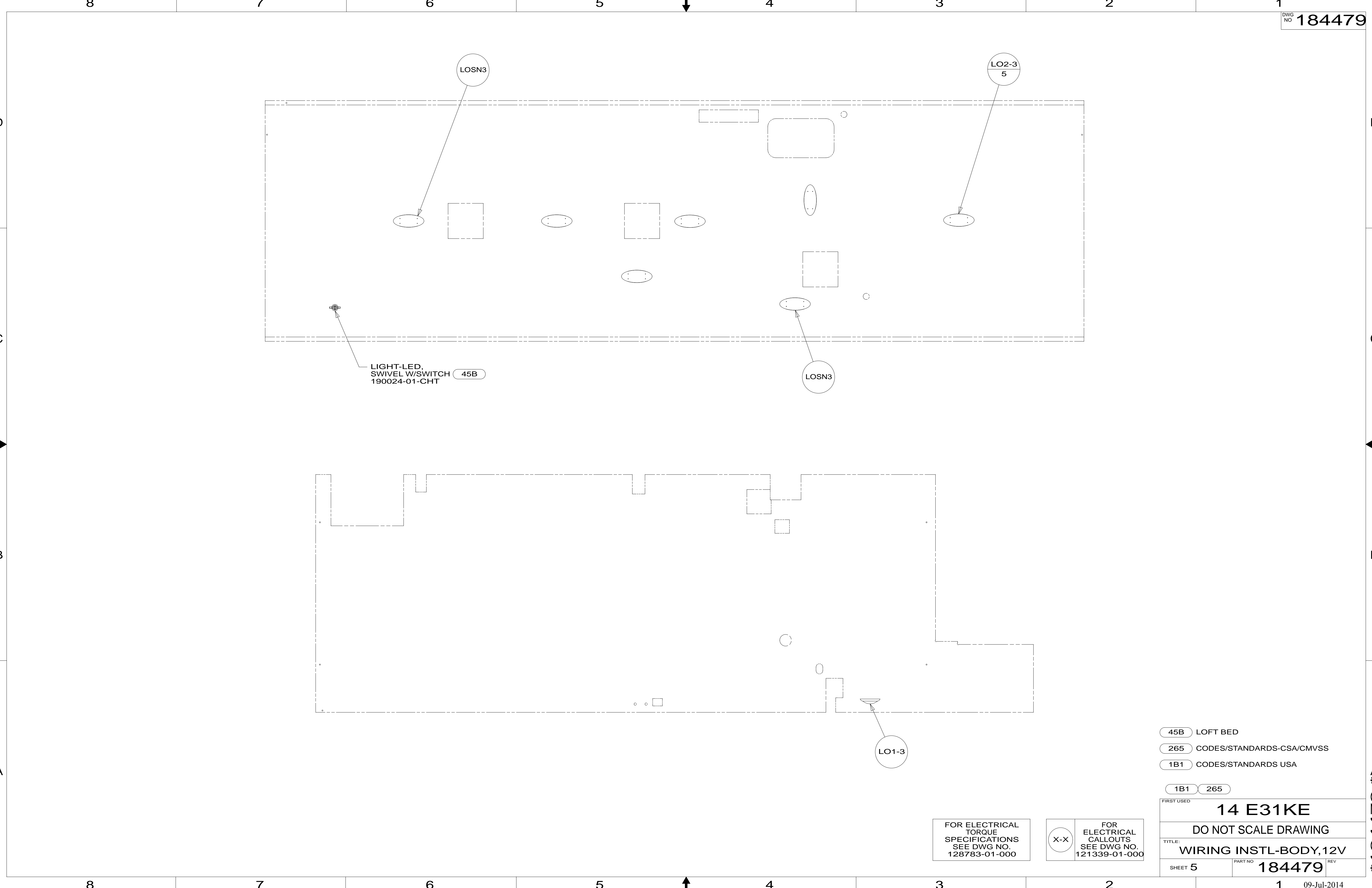
FOR ELECTRICAL CALLOUTS SEE DWG NO. 121339-01-000

- 45B LOFT BED
- 265 CODES/STANDARDS-CSA/CMVSS
- 1B1 CODES/STANDARDS USA

1B1	265
FIRST USED	
<b>14 E31KE</b>	
DO NOT SCALE DRAWING	
TITLE: <b>WIRING INSTL-BODY,12V</b>	
SHEET 4	PART NO <b>184479</b> REV

NOTES:  
1 FOR SWITCH ORIENTATION SEE DETAIL DD.

\* 184479 \* A



LIGHT-LED,  
SWIVEL W/SWITCH  
190024-01-CHT **45B**

**LO1-3**

- 45B** LOFT BED
- 265** CODES/STANDARDS-CSA/CMVSS
- 1B1** CODES/STANDARDS USA

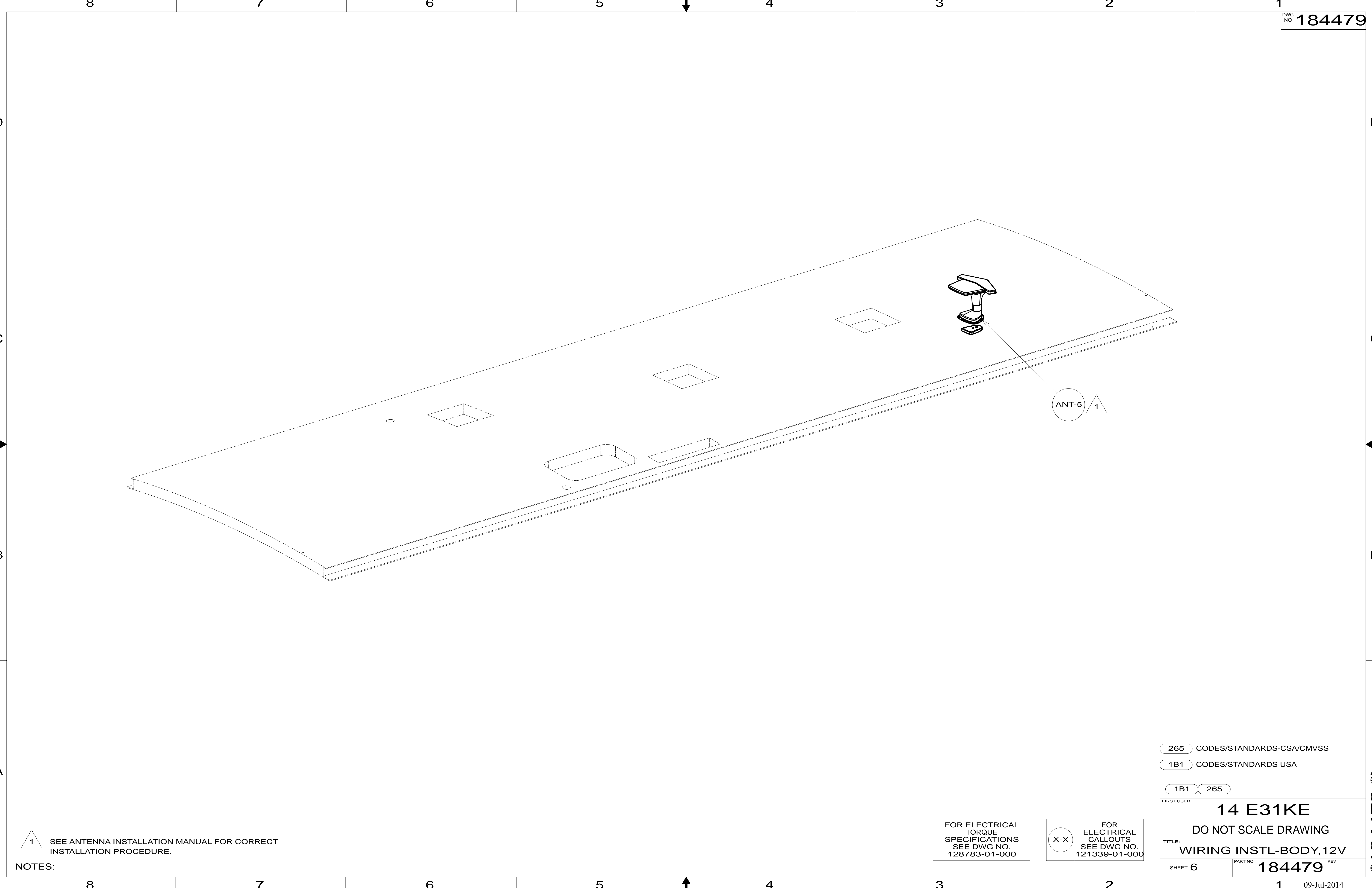
**1B1** **265**

FOR ELECTRICAL  
TORQUE  
SPECIFICATIONS  
SEE DWG NO.  
128783-01-000

**X-X**  
FOR  
ELECTRICAL  
CALLOUTS  
SEE DWG NO.  
121339-01-000

FIRST USED	<b>14 E31KE</b>	
	DO NOT SCALE DRAWING	
TITLE:	<b>WIRING INSTL-BODY,12V</b>	
SHEET 5	PART NO <b>184479</b>	REV

\*184479 \*A



1 SEE ANTENNA INSTALLATION MANUAL FOR CORRECT INSTALLATION PROCEDURE.

NOTES:

FOR ELECTRICAL TORQUE SPECIFICATIONS SEE DWG NO. 128783-01-000

FOR ELECTRICAL CALLOUTS SEE DWG NO. 121339-01-000

265 CODES/STANDARDS-CSA/CMVSS

1B1 CODES/STANDARDS USA

1B1 265

FIRST USED 14 E31KE

DO NOT SCALE DRAWING

TITLE: WIRING INSTL-BODY,12V

SHEET 6 PART NO 184479 REV



D

D

C

C

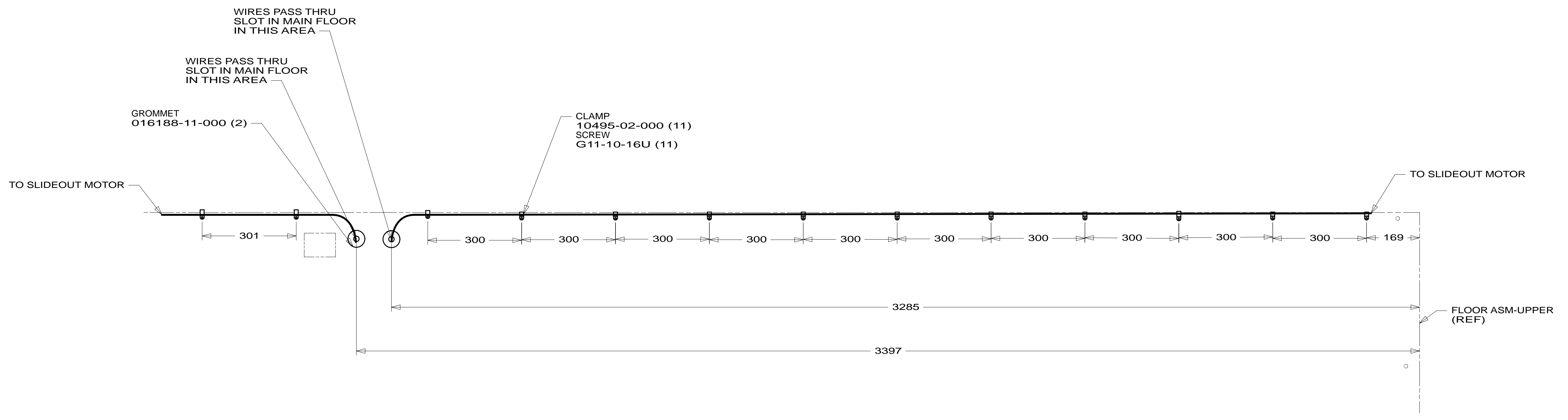
B

B

A

A

\*184479 \*A



VIEW GA

FOR ELECTRICAL  
TORQUE  
SPECIFICATIONS  
SEE DWG NO.  
128783-01-000

FOR  
ELECTRICAL  
CALLOUTS  
SEE DWG NO.  
121339-01-000

265 CODES/STANDARDS-CSA/CMVSS

1B1 CODES/STANDARDS USA

1B1 265

FIRST USED **14 E31KE**

DO NOT SCALE DRAWING

TITLE: **WIRING INSTL-BODY, 12V**

SHEET 7 PART NO **184479** REV