



**DANGER**

**Danger of electrical shock, burns or death.** Always remove all power sources before attempting any repair, service or diagnostic work. Power can be present from shore power, generator, inverter or battery. All power sources must be disabled and secured before performing any service.

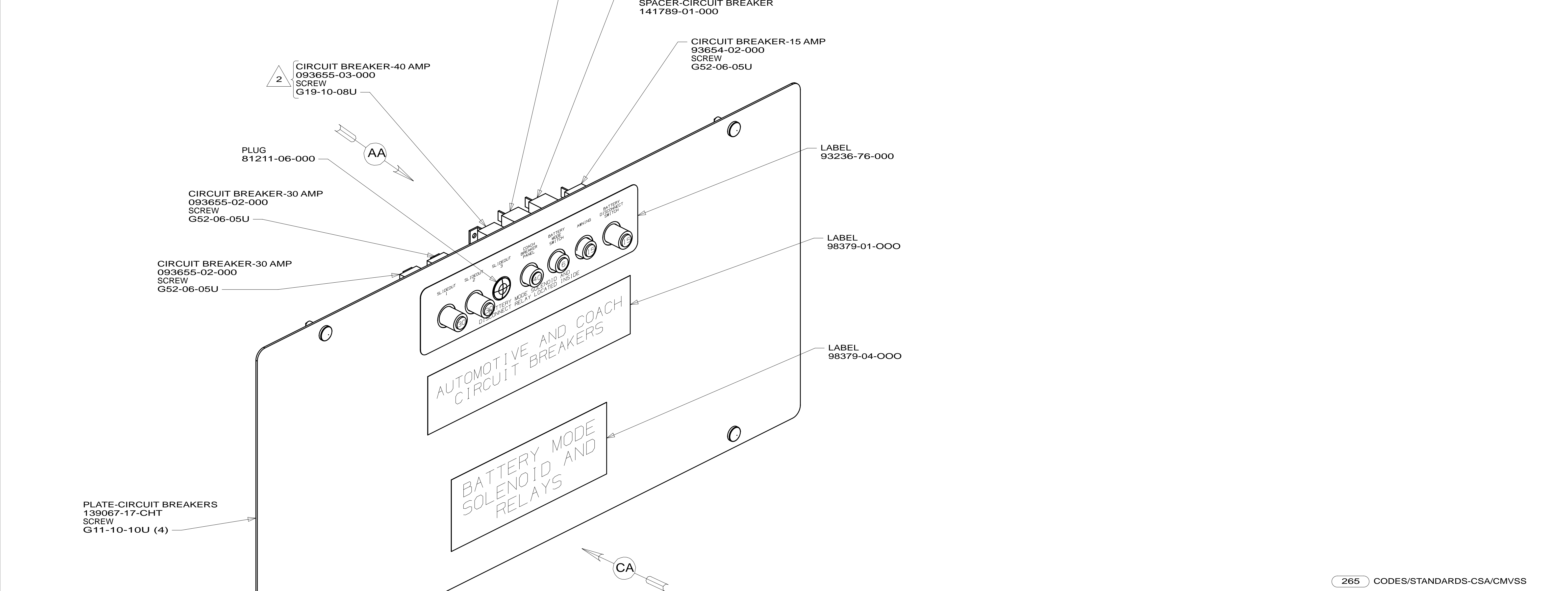


**CAUTION**

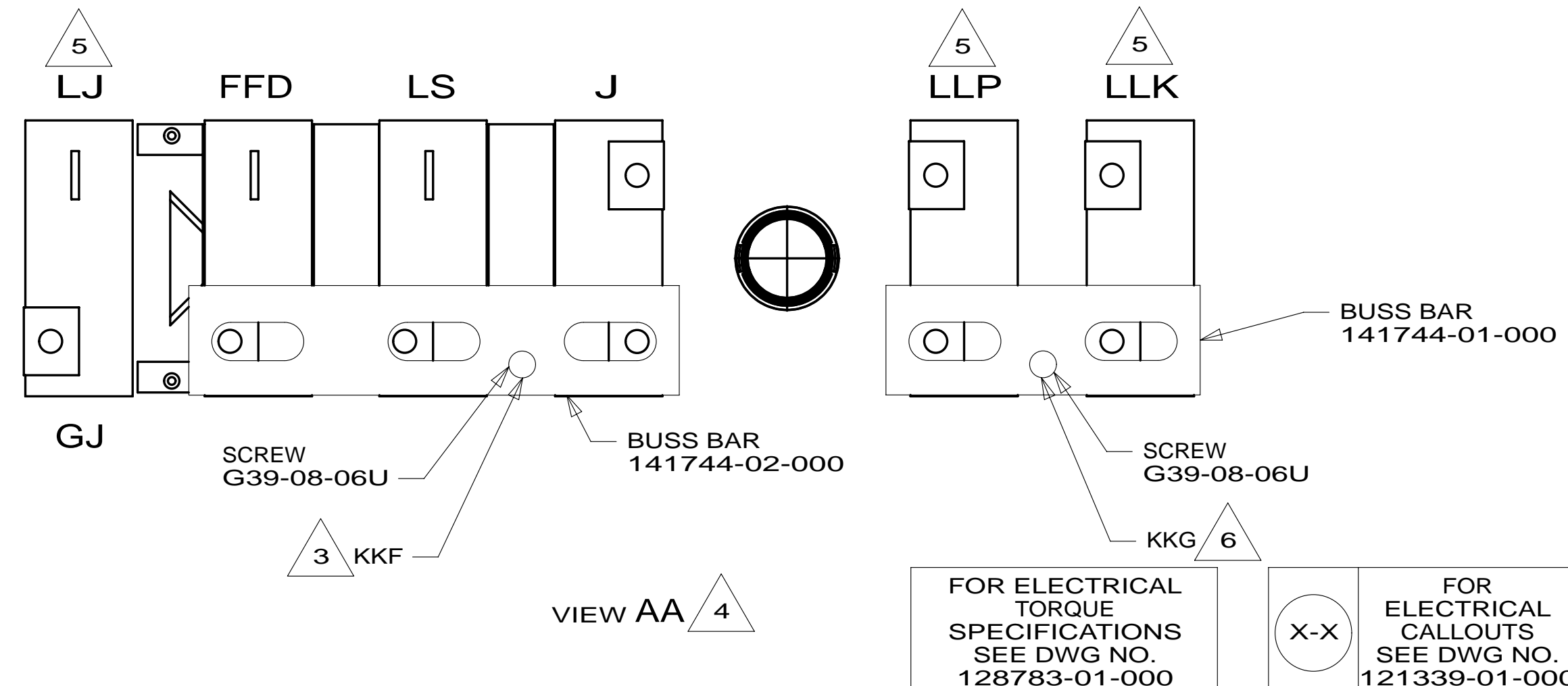
If you lack the skills, tools or equipment to perform diagnostic or repair work leave such work to an authorized Winnebago Industries dealer or other qualified shop.

DRAWING NO.	MODEL	SHEETS
184425-01	727K	1,3
184425-02	730J	2,3

RELEASE	REV/DATE	DWG NO	184425
REV ZONE	REVISION RECORD	DATE	DFT-ORIG



- 6 WIRE IS MARKED WITH PURPLE TAPE.  
 5 CIRCUIT IS FROM WIRE ASM-CHASSIS.  
 4 TAPE BACK UNUSED WIRES TO HARNESS.  
 3 WIRE IS MARKED WITH YELLOW TAPE.  
 2 REPLACE EXISTING SCREW TO PROPERLY ATTACH  
 BREAKER TO BUSS BAR.
1. SECURE CONDUIT 41953, TAB AS REQUIRED,  
 OVER ALL WIRES IN CONTACT WITH SHARP EDGES.



- 265 CODES/STANDARDS-CSA/CMVSS  
 1B1 CODES/STANDARDS USA  
 1B1 265

**WINNEBAGO**  
 COPYRIGHT 2013  
 WINNEBAGO  
 INDUSTRIES, INC.

ALL DIMENSIONS ARE  
 IN MILLIMETERS

14 700-SERIES

UNspecified TOLERANCES ARE:  
 WHOLE DIM (X) :  
 ONE-PLACE (X.X) :  
 TWO-PLACE (X.XX) :  
 ANGLE :

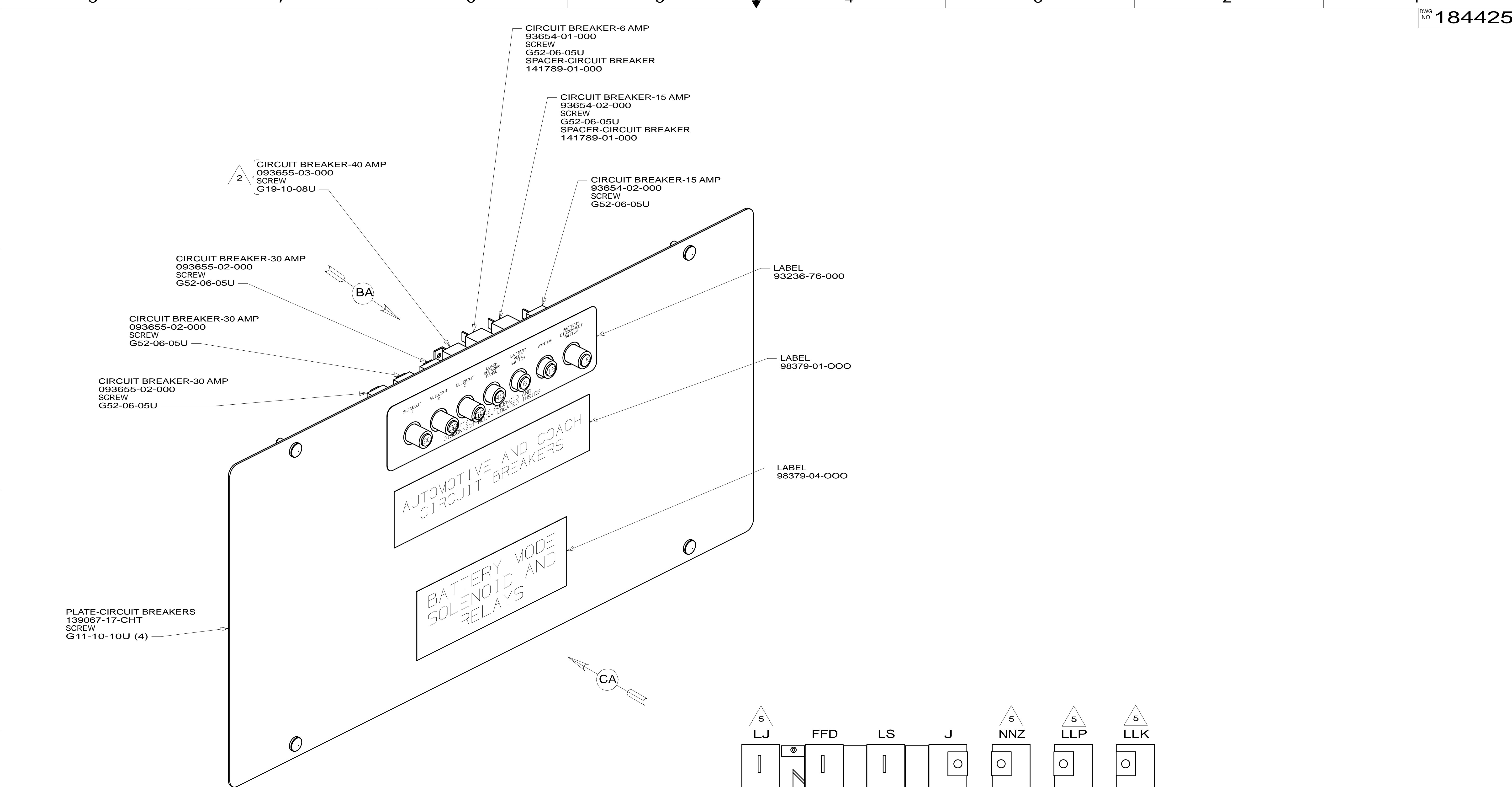
MATERIAL:  
 REFER TO ES0018 FOR FASTENER  
 TIGHTENING GUIDELINES

TITLE:  
**CHASSIS ELECTRICAL BOX ASM**

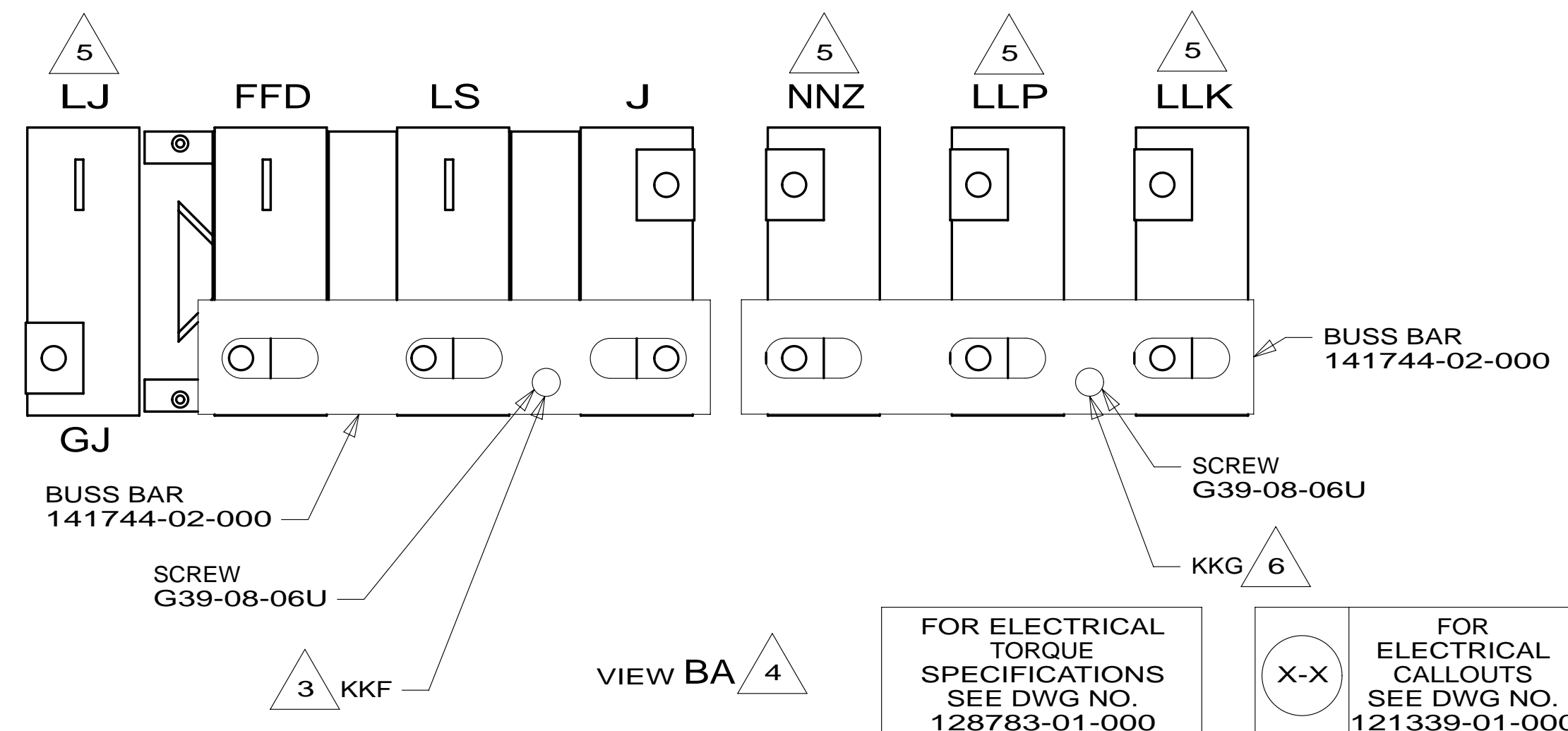
SHEET 1 OF 3 PART NO **184425** REV

REF: 1 13-Jun-2013

\* 184425 \*



- NOTES:
- 6 WIRE IS MARKED WITH PURPLE TAPE.
  - 5 CIRCUIT IS FROM WIRE ASM-CHASSIS.
  - 4 TAPE BACK UNUSED WIRES TO HARNESS.
  - 3 WIRE IS MARKED WITH YELLOW TAPE.
  - 2 REPLACE EXISTING SCREW TO PROPERLY ATTACH BREAKER TO BUSS BAR.
1. SECURE CONDUIT 41953, TAB AS REQUIRED, OVER ALL WIRES IN CONTACT WITH SHARP EDGES.



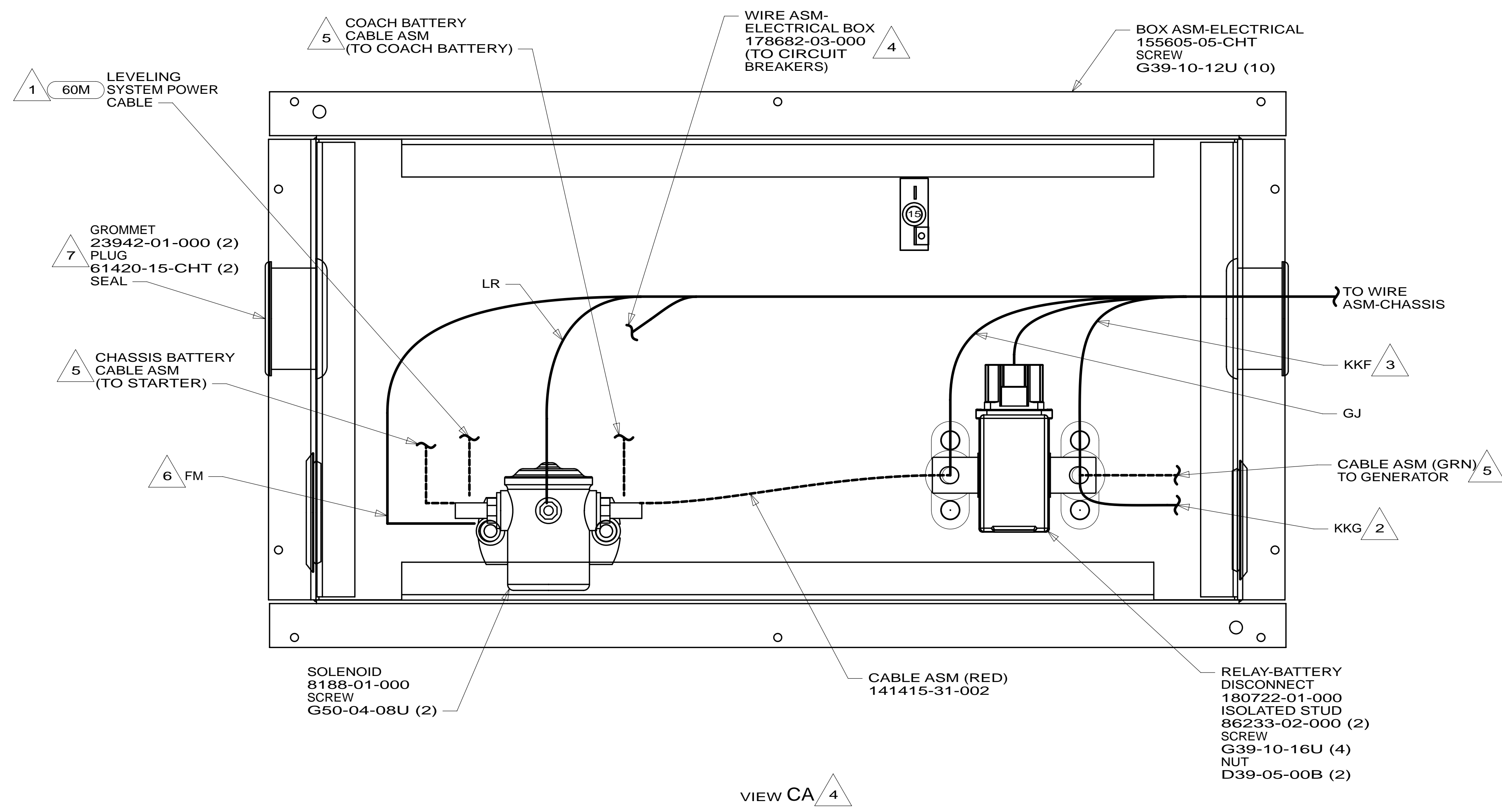
FOR ELECTRICAL TORQUE SPECIFICATIONS SEE DWG NO. 128783-01-000

FOR ELECTRICAL CALLOUTS SEE DWG NO. 121339-01-000

- 60M HYDRAULIC LEVEL JACKS-AUTO
- 265 CODES/STANDARDS-CSA/CMVSS
- 1B1 CODES/STANDARDS USA

FIRST USED	
<b>14 700-SERIES</b>	
DO NOT SCALE DRAWING	
TITLE: CHASSIS ELECTRICAL BOX ASM	
SHEET 2	PART NO 184425 REV

\*184425 \*A



- NOTES:
- 7 LOCATION OF GROMMET & PLUG DEPENDENT ON LOCATION OF BOX.
  - 6 SECURE WITH SOLENOID MOUNTING SCREW.
  - 5 SEE WIRING INSTL-CHASSIS FOR ADDITIONAL INFORMATION.
  - 4 TAPE BACK UNUSED WIRES TO HARNESS.
  - 3 WIRE IS MARKED WITH YELLOW TAPE.
  - 2 WIRE IS MARKED WITH PURPLE TAPE.
  - 1 SEE LEVELING SYSTEM INSTL FOR ADDITIONAL INFORMATION.

- 60M HYDRAULIC LEVEL JACKS-AUTO
- 265 CODES/STANDARDS-CSA/CMVSS
- 1B1 CODES/STANDARDS USA

FIRST USED	1B1	265
<b>14 700-SERIES</b>		
DO NOT SCALE DRAWING		
TITLE: CHASSIS ELECTRICAL BOX ASM		
SHEET 3	PART NO 184425	REV
13-Jun-2013		

FOR ELECTRICAL TORQUE SPECIFICATIONS SEE DWG NO. 128783-01-000

FOR ELECTRICAL CALLOUTS SEE DWG NO. 121339-01-000

\*184425 \*A