



DANGER

Danger of electrical shock, burns or death. Always remove all power sources before attempting any repair, service or diagnostic work. Power can be present from shore power, generator, inverter or battery. All power sources must be disabled and secured before performing any service.



CAUTION

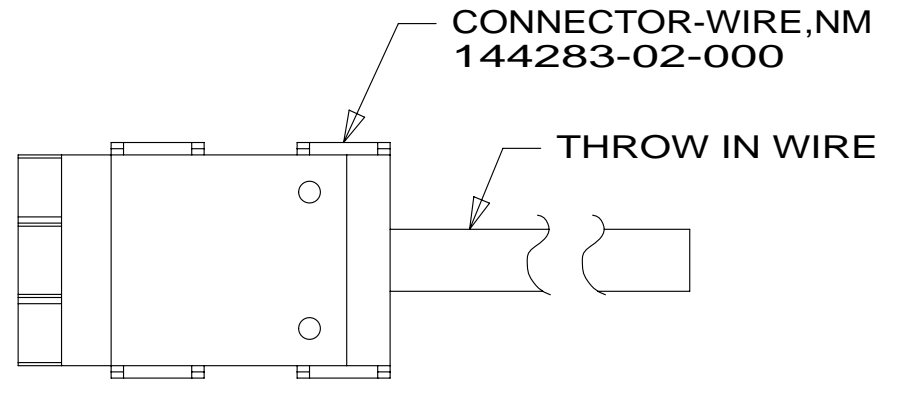
If you lack the skills, tools or equipment to perform diagnostic or repair work leave such work to an authorized Winnebago Industries dealer or other qualified shop.

DRAWING NO.	MODEL
184332-01	727K
184332-02	730J

RELEASE	REV/DATE A	DWG NO 184332
REV ZONE	REVISION RECORD	DATE DFR-ORIG

		727K	730J	
RED	1B1	136135-07-071	136135-07-066	
	265	136136-07-071	136136-07-066	
YEL	1B1	136131-05-059	136131-05-026	
	265	136134-05-059	136134-05-026	
BLK	1B1	136135-06-044	136135-06-014	53B
		136135-06-069	136135-06-030	1BT
	265	136136-06-044	136136-06-014	53B
BLK-2	1B1	136135-22-046	136135-22-027	1BT
	265	136136-22-046	136136-22-027	53B
BRN	1B1	136131-03-020	136131-03-010	2
	265	136134-03-020	136134-03-010	2
BRN-2	1B1	136131-19-065	136131-19-065	2
	265	136134-19-065	136134-19-065	2
BLU	1B1	136131-02-190	136131-02-144	
	265	136134-02-190	136134-02-144	
WHT	1B1	136135-09-036	136135-09-031	53B
	265	136136-09-036	136136-09-031	53B
MAIN	1B1	136137-01-100	136137-01-067	
	265	136138-01-100	136138-01-067	
GENERATOR CABLE ASM	1B1	164957-09-064	164957-09-069	
	265	164957-10-064	164957-10-069	
THROW IN #1	1B1	136131-19-007	136131-19-007	3
	265	136134-19-007	136134-19-007	3
THROW IN #2	1B1	136131-03-018	136131-03-007	2 4 401
	265	136134-03-018	136134-03-007	2 4 401
THROW IN #3	1B1	136131-19-008	-----	2 41Q
	265	136134-19-008	-----	2 41Q
THROW IN #4	1B1	136131-19-032	136131-19-032	
	265	136134-19-032	136134-19-032	
THROW IN #5	1B1	136131-19-018	136131-19-009	2 4 401
	265	136134-19-018	136134-19-009	2 4 401
THROW IN #6	1B1	136131-19-005	136131-19-005	49M
	265	136134-19-005	136134-19-005	49M

	727K	730J
ATS GND	136145-01-015	136145-01-012
GROUND	136145-02-022	136145-02-015
WIRE ASM-INVERTER EXTENSION	-----	182730-01-000 401



DETAIL AA

- 1BT WATER HEATER, TANKLESS
- 53B WTR HTR-6GAL ELECTRIC/LP GAS
- 49M AIR SLEEP SYSTEM-QUEEN SIZE
- 401 INVERTER-DC/AC, 1000 WATT
- 1D3 ENTERTAIN CENTR/EXT TV-DVD
- 41Q SOFA/SLEEPER-ULTRALEATHER HP
- 265 CODES/STANDARDS-CSA/CMVSS
- 1B1 CODES/STANDARDS USA

WINNEBAGO COPYRIGHT 2014 WINNEBAGO INDUSTRIES, INC.

DFTR	ORIG. DATE
CHKR	ALL DIMENSIONS ARE IN MILLIMETERS
P.E.	FIRST USED
M.E.	14 700-SERIES
DSNR	

UNSPECIFIED TOLERANCES ARE:
 WHOLE DIM (X) : 3
 ONE-PLACE (X.X) : 1.5
 TWO-PLACE (X.XX) : 0.50
 ANGLE : 1'

THIRD ANGLE PROJECTION

DO NOT SCALE DRAWING REFER TO ES0018 FOR FASTENER TIGHTENING GUIDELINES

TITLE: **LOAD CENTER/ATS ASM**

SHEET 1 OF 4 PART NO **184332** REV

REF: 1 09-Jan-2014

- 4 FOR INVERTER INFORMATION SEE SHEET 4.
- 3 WITH BLACK PERMANENT MARKER, IDENTIFY MOLEX HOUSING WITH #1.
- 2 FOR CONNECTOR INSTALLATION SEE DETAIL AA.

NOTES:
 1. ALL GROUND WIRES TO BE COVERED WITH TUBING 8041-02-000.

FOR ELECTRICAL TORQUE SPECIFICATIONS SEE DWG NO. 128783-01-000

FOR ELECTRICAL CALLOUTS SEE DWG NO. 121339-01-000

* 184332 * A

8 7 6 5 4 3 2 1

D

C

B

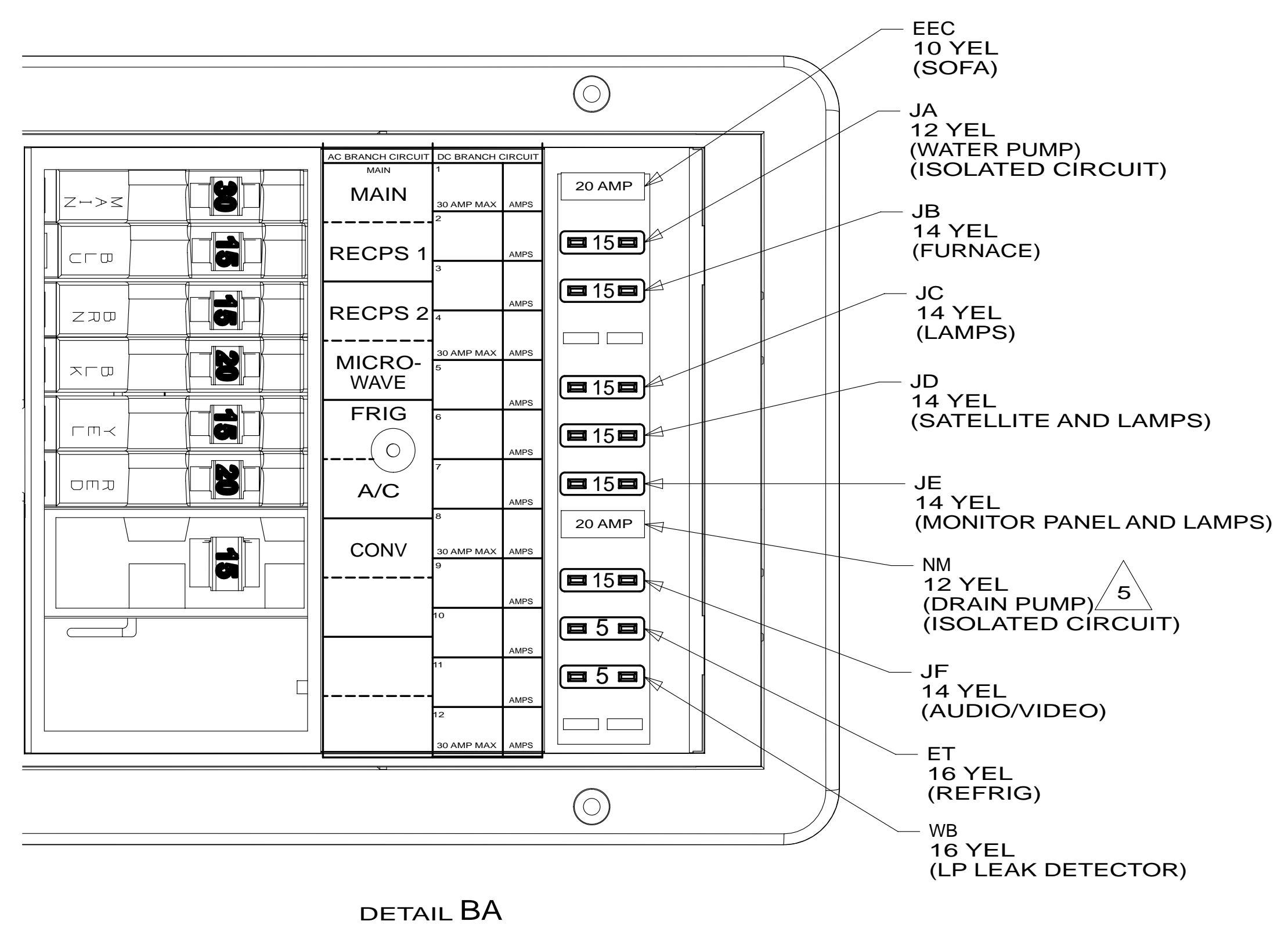
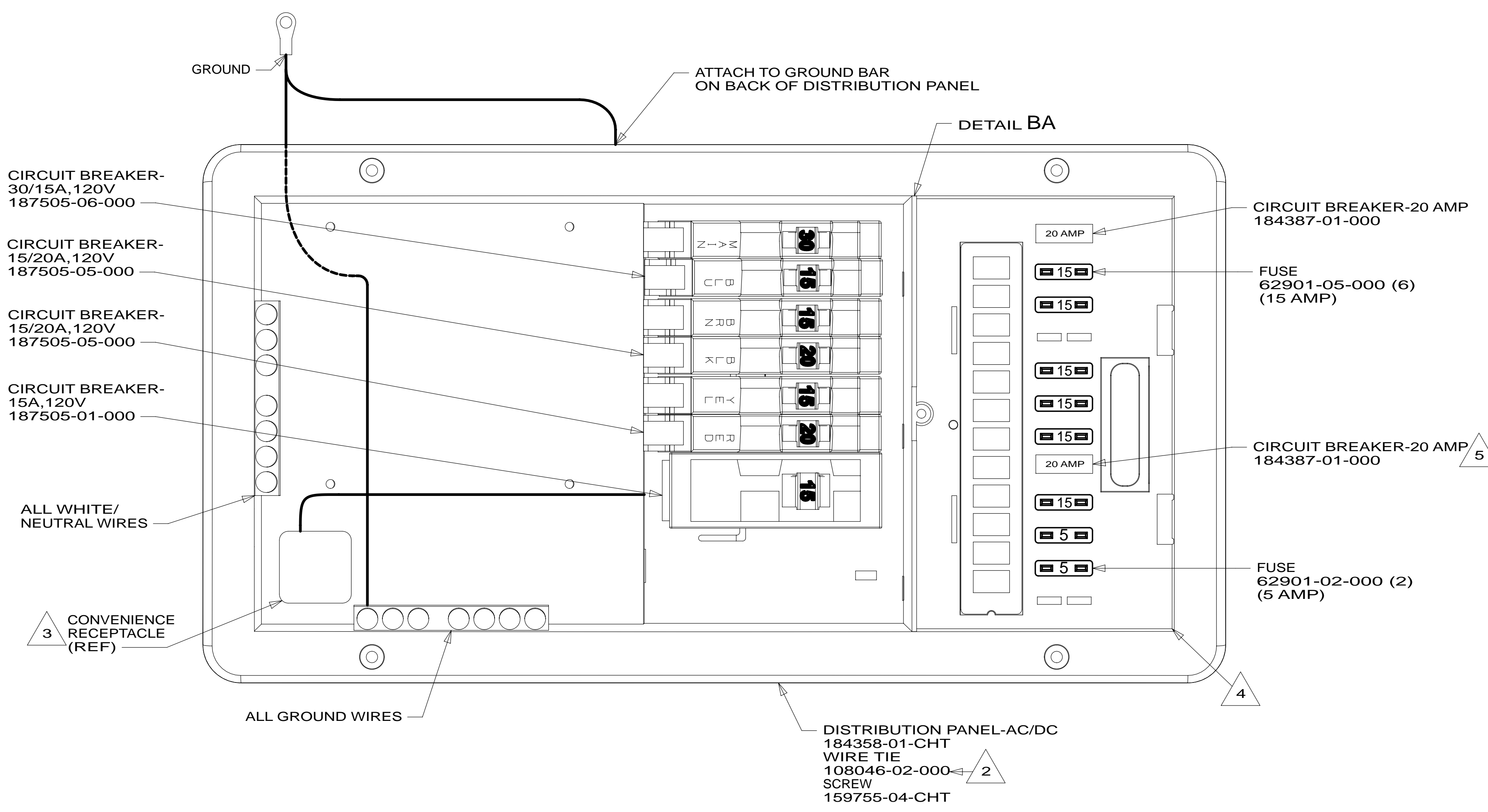
A

D

C

B

A



- 5 USED ONLY ON THE 727K. NOT USED ON THE 730J.
 - 4 SEE WIRING INSTL-BODY,12V FOR ADDITIONAL INFORMATION.
 - 3 CONNECT BLACK WIRE FROM CONVENIENCE RECEPTACLE TO DEDICATED CIRCUIT BREAKER.
 - 2 ATTACH TO UNUSED SCREW HOLE ON BACK SIDE OF PANEL TO SECURE WIRES.
- NOTES:
- ALL GROUND WIRES TO BE COVERED WITH TUBING 8041-02-000.

FOR ELECTRICAL TORQUE SPECIFICATIONS SEE DWG NO. 128783-01-000

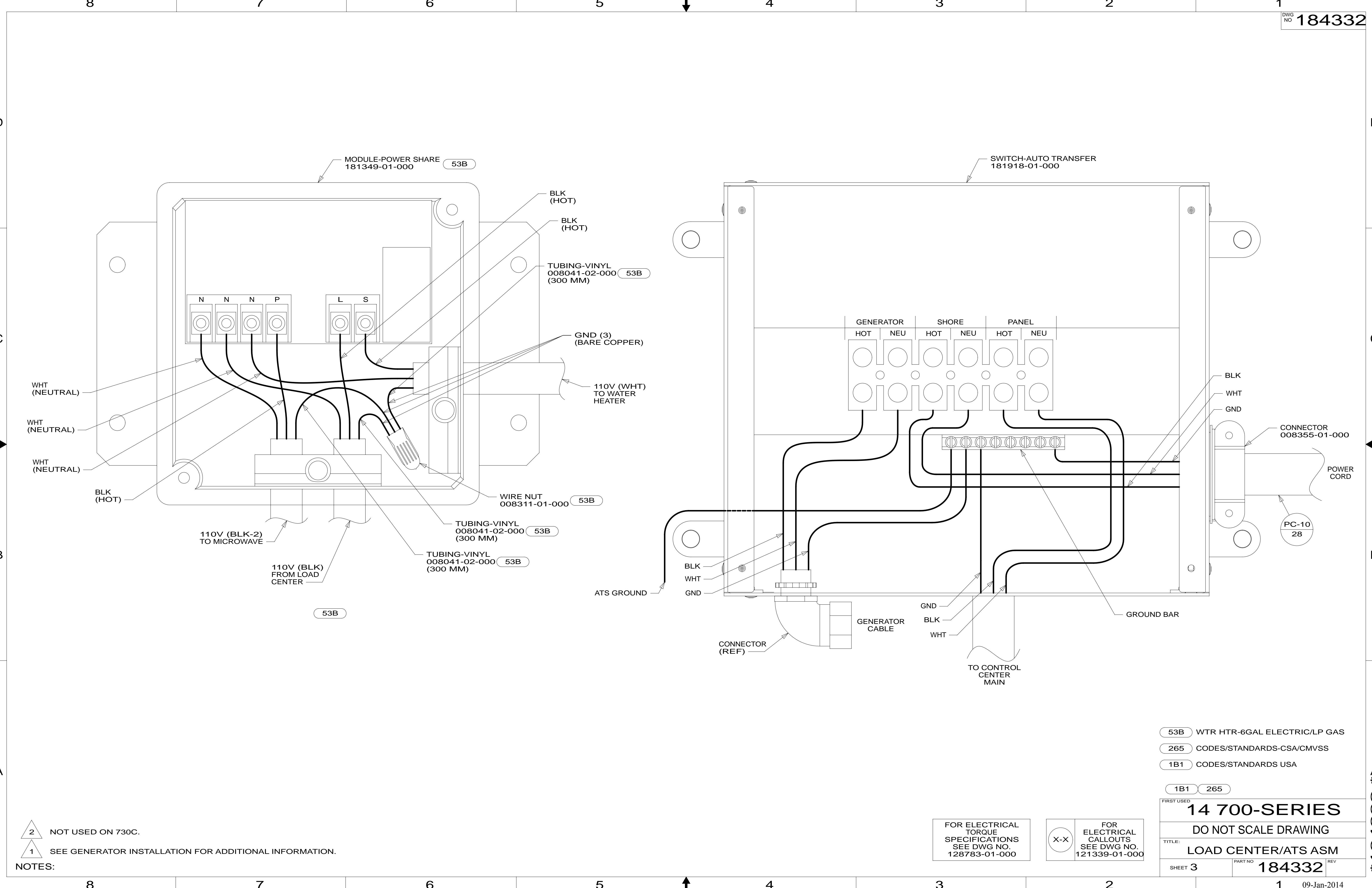
FOR ELECTRICAL CALLOUTS SEE DWG NO. 121339-01-000

- 41H REST EASY, ULTRALEATHER
- 265 CODES/STANDARDS-CSA/CMVSS
- 1B1 CODES/STANDARDS USA

1B1	265
FIRST USED	
14 700-SERIES	
DO NOT SCALE DRAWING	
TITLE: LOAD CENTER/ATS ASM	
SHEET 2	PART NO 184332 REV

8 7 6 5 4 3 2 1 09-Jan-2014

* 184332 * A



NOTES:
 2 NOT USED ON 730C.
 1 SEE GENERATOR INSTALLATION FOR ADDITIONAL INFORMATION.

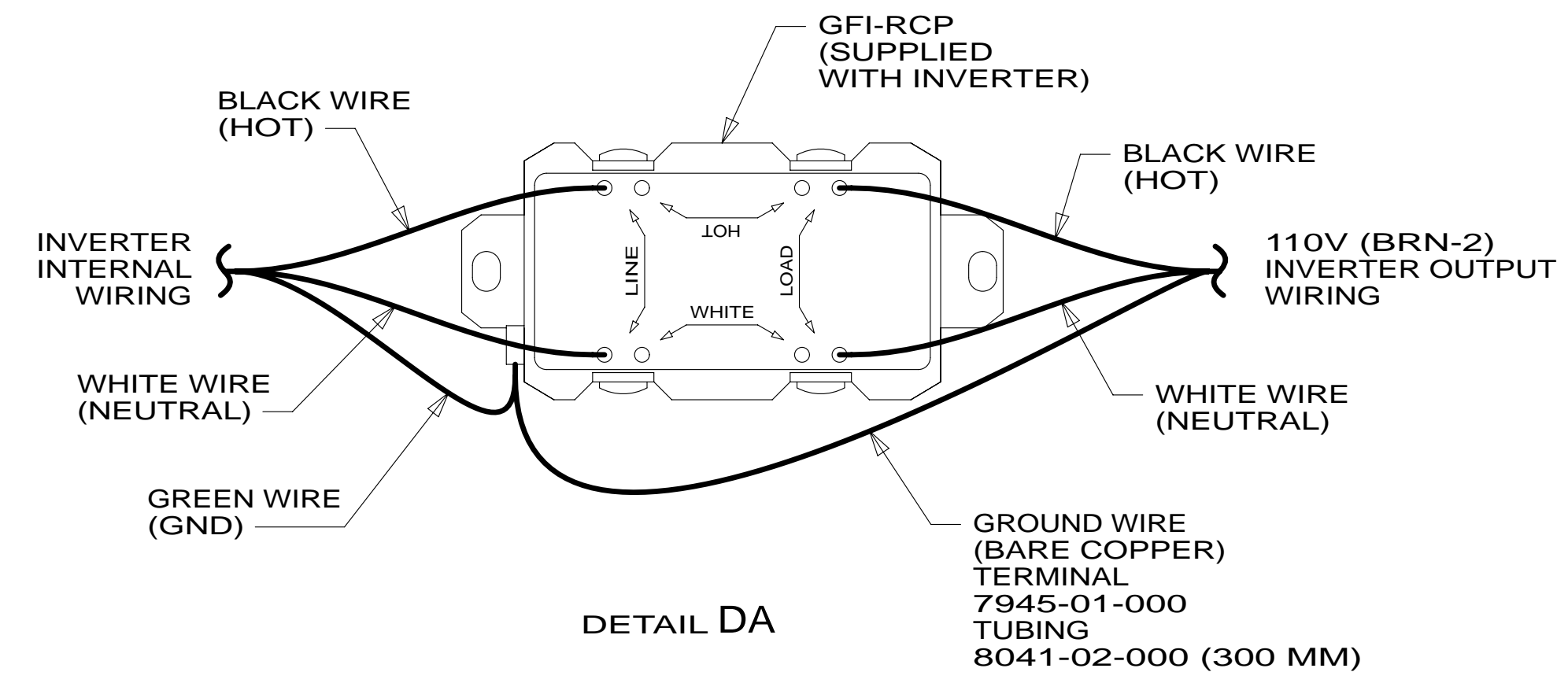
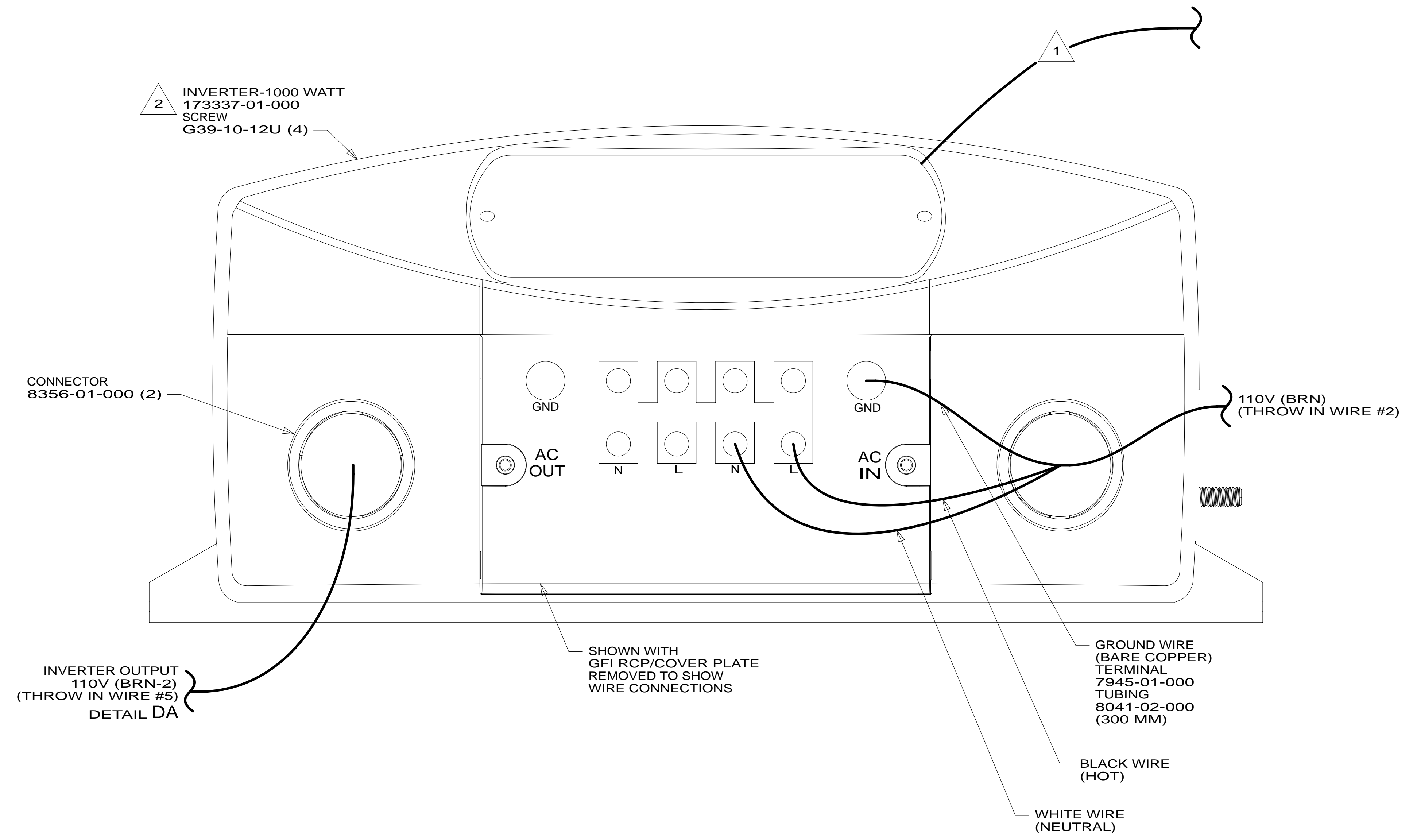
FOR ELECTRICAL TORQUE SPECIFICATIONS SEE DWG NO. 128783-01-000

FOR ELECTRICAL CALLOUTS SEE DWG NO. 121339-01-000

- 53B WTR HTR-6GAL ELECTRIC/LP GAS
- 265 CODES/STANDARDS-CSA/CMVSS
- 1B1 CODES/STANDARDS USA

1B1	265
FIRST USED	
14 700-SERIES	
DO NOT SCALE DRAWING	
TITLE: LOAD CENTER/ATS ASM	
SHEET 3	PART NO 184332 REV

* 184332 * A



- NOTES:
- 2 INVERTER SUPPLIED WITH REMOTE PANEL. SEND PANEL TO MANUFACTURING LINE.
 - 1 ON 730C COVER REMOTE PANEL COMMUNICATION CABLE WITH CONDUIT-CONVOLUTE 41953-06-000 (4600 MM) STARTING 100 MM FROM INVERTER. SECURE BOTH ENDS WITH TAPE 8363-01-000.

FOR ELECTRICAL TORQUE SPECIFICATIONS SEE DWG NO. 128783-01-000

FOR ELECTRICAL CALLOUTS SEE DWG NO. 121339-01-000

- 401 INVERTER-DC/AC, 1000 WATT
- 265 CODES/STANDARDS-CSA/CMVSS
- 1B1 CODES/STANDARDS USA

1B1	265	401
FIRST USED		
14 700-SERIES		
DO NOT SCALE DRAWING		
TITLE: LOAD CENTER/ATS ASM		
SHEET 4	PART NO 184332	REV
		09-Jan-2014

* 184332 * A