



DANGER

Danger of electrical shock, burns or death. Always remove all power sources before attempting any repair, service or diagnostic work. Power can be present from shore power, generator, inverter or battery. All power sources must be disabled and secured before performing any service.



CAUTION

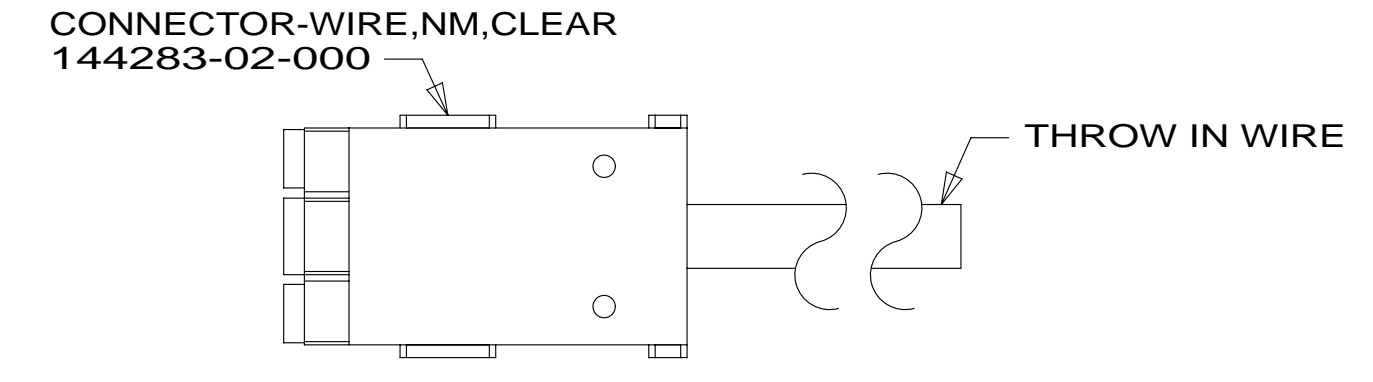
If you lack the skills, tools or equipment to perform diagnostic or repair work leave such work to an authorized Winnebago Industries dealer or other qualified shop.

DRAWING NO.	MODEL
184319-01	J38Q
184319-02	J37F

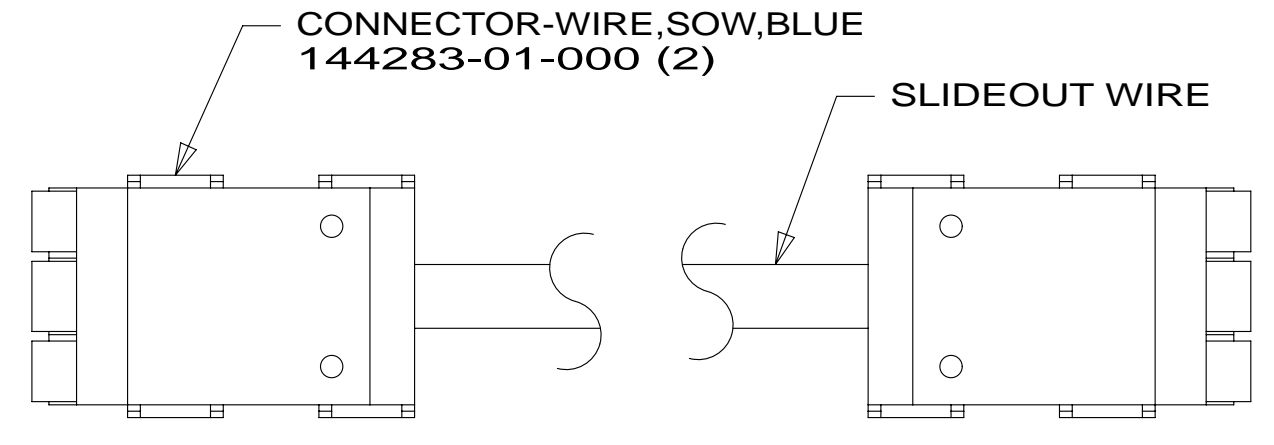
RELEASE	REV/DATE	DWG NO	184319
REV ZONE	REVISION RECORD	DATE	DTR-ORIG

		J38Q	J37F
RED	1B1	136135-07-065	136135-07-050
	265	136136-07-065	136136-07-050
GRN	1B1	136135-08-065	136135-08-050
	265	136136-08-065	136136-08-050
YEL	1B1	136131-05-085 ¹	136131-05-078 ¹
	265	136134-05-085 ¹	136134-05-078 ¹
GLD	1B1	136131-10-055	136131-10-078 ¹
	265	136134-10-055	136134-10-078 ¹
GLD-2	1B1	136131-20-055	136131-20-078 ¹
	265	136134-20-055	136134-20-078 ¹
WHT	1B1	136135-09-040	136135-09-055
	265	136136-09-040	136136-09-055
BLU	1B1	136131-02-085 ¹	136131-02-300 ¹
	265	136134-02-085 ¹	136134-02-300 ¹
BRN	1B1	136131-03-145 ¹	136131-03-078 ¹
	265	136134-03-145 ¹	136134-03-078 ¹
PUR	1B1	136131-04-100 ¹	136131-04-078 ¹
	265	136134-04-100 ¹	136134-04-078 ¹
BLK	1B1	136131-06-080 ¹	136131-06-078 ¹
	265	136134-06-080 ¹	136134-06-078 ¹
GRY	1B1	136131-15-085 ¹	
	265	136134-15-085 ¹	

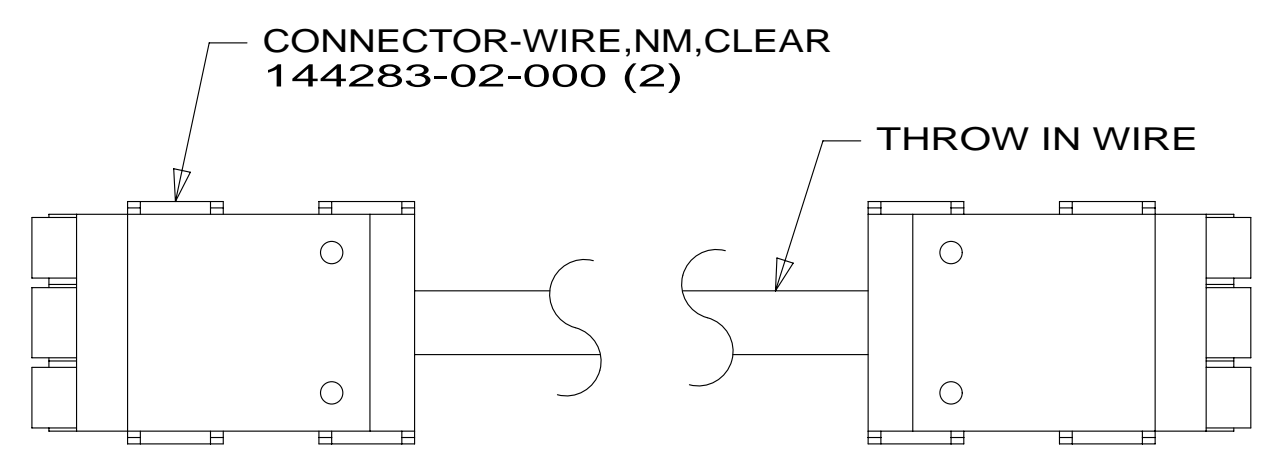
		J38Q	J37F
INVERTER CHARGER MAIN	1B1	136137-01-085	136137-01-077
	265	136138-01-085	136138-01-077
INVERTER CHARGER SUB MAIN	1B1	136137-01-085	136137-01-077
	265	136138-01-085	136138-01-077
CABLE ASM-MAIN,6 AWG		176841-01-020	176841-01-058
MAIN GROUND		⁴	⁴
ATS GROUND		136145-01-012	136145-01-020
INVERTER GROUND		⁴	⁴
THROW IN WIRE #1	1B1	136131-04-130 ¹	136131-03-070 ¹
	265	136134-04-130 ¹	136134-03-070 ¹
THROW IN WIRE #2	1B1	136131-03-075	136131-04-080 ¹
	265	136134-03-075	136134-04-080 ¹
THROW IN WIRE #3	1B1	136131-02-040	136131-04-145 ¹
	265	136134-02-040	136134-04-145 ¹
THROW IN WIRE #4	1B1	136131-15-006 ¹	136131-05-028 ¹
	265	136134-15-006 ¹	136134-05-028 ¹
THROW IN WIRE #5	1B1		136131-10-044 ¹
	265		136134-10-044 ¹
THROW IN WIRE #6	1B1		136131-20-043 ¹
	265		136134-20-043 ¹
SLIDEOUT #1 WIRE #1		136151-04-039 ²	136151-03-027 ²
SLIDEOUT #1 WIRE #2		136151-03-039 ²	136151-06-027 ²
SLIDEOUT #1 WIRE #3		136151-05-039 ²	136151-04-027 ²
SLIDEOUT #1 WIRE #4		136151-15-039 ²	136151-05-027 ²
SLIDEOUT #1 WIRE #5			136151-10-027 ²
SLIDEOUT #1 WIRE #6			136151-20-027 ²
SLIDEOUT #2 WIRE #1		136151-04-020 ²	136151-04-015 ²
SLIDEOUT #3 WIRE #1		136151-02-023 ²	136151-02-023 ²
SLIDEOUT #3 WIRE #2		136151-06-023 ²	



DETAIL AA



DETAIL AB



DETAIL AC

- NOTES:
- ⁴ PART OF WIRE ASM-CHASSIS.
 - ³ SEE DETAIL AC FOR CONNECTOR INSTALLATION.
 - ² SEE DETAIL AB FOR CONNECTOR INSTALLATION.
 - ¹ SEE DETAIL AA FOR CONNECTOR INSTALLATION.

- 14C FIREPLACE-ELECTRIC
- 265 CODES/STANDARDS-CSA/CMVSS
- 1B1 CODES/STANDARDS USA

1B1 265

WINNEBAGO COPYRIGHT 2013 WINNEBAGO INDUSTRIES, INC.

DTR	ORIG. DATE
CHKR	ALL DIMENSIONS ARE IN MILLIMETERS
P.E.	
M.E.	FIRST USED
DSNR	14 J38Q

UNSPECIFIED TOLERANCES ARE:
 WHOLE DIM (X) : 3
 ONE-PLACE (X.X) : 1.5
 TWO-PLACE (X.XX) : 0.50
 ANGLE : 1°

THIRD ANGLE PROJECTION

DO NOT SCALE DRAWING REFER TO ES0018 FOR FASTENER TIGHTENING GUIDELINES

TITLE: **LOAD CENTER/ATS ASM**

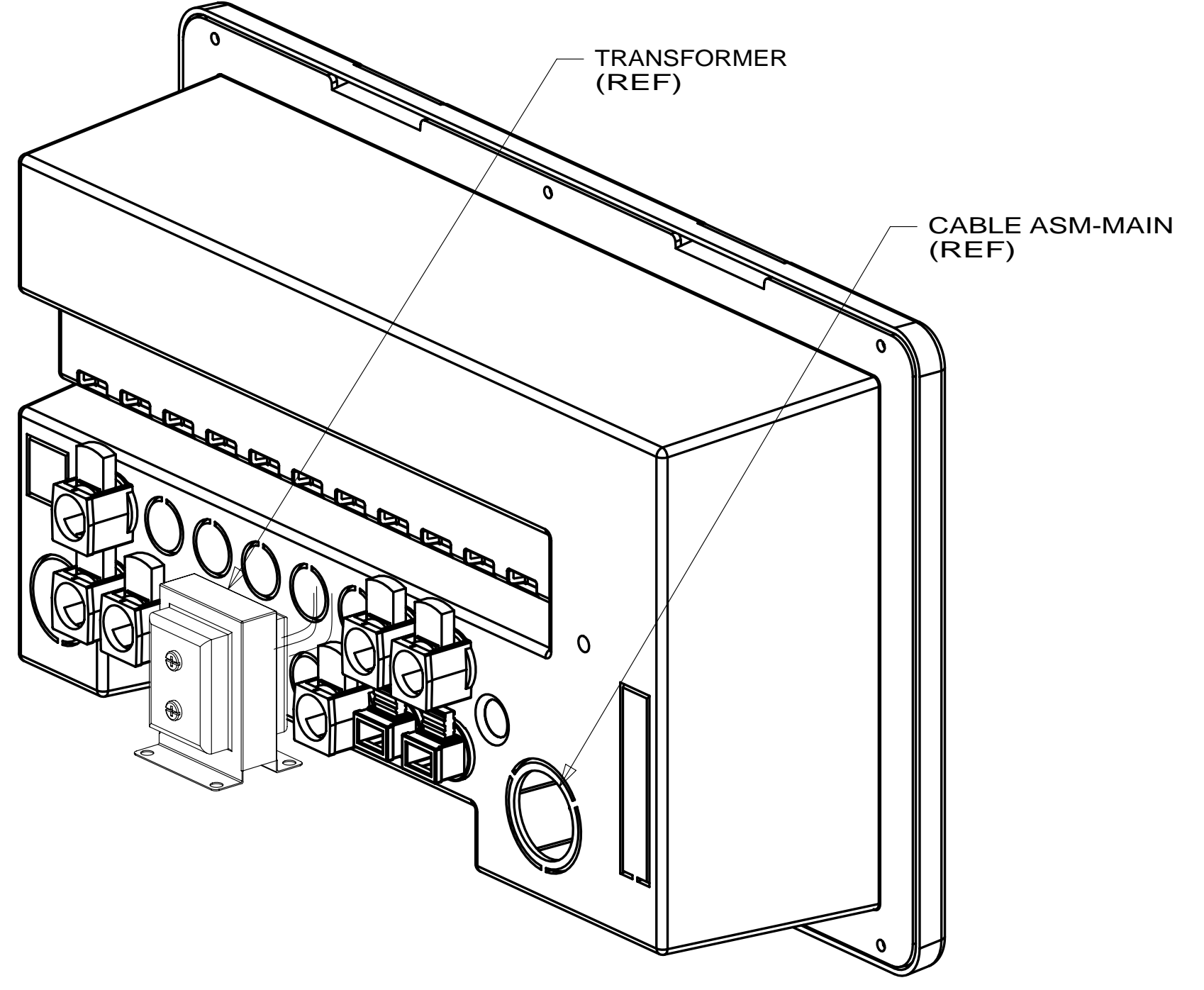
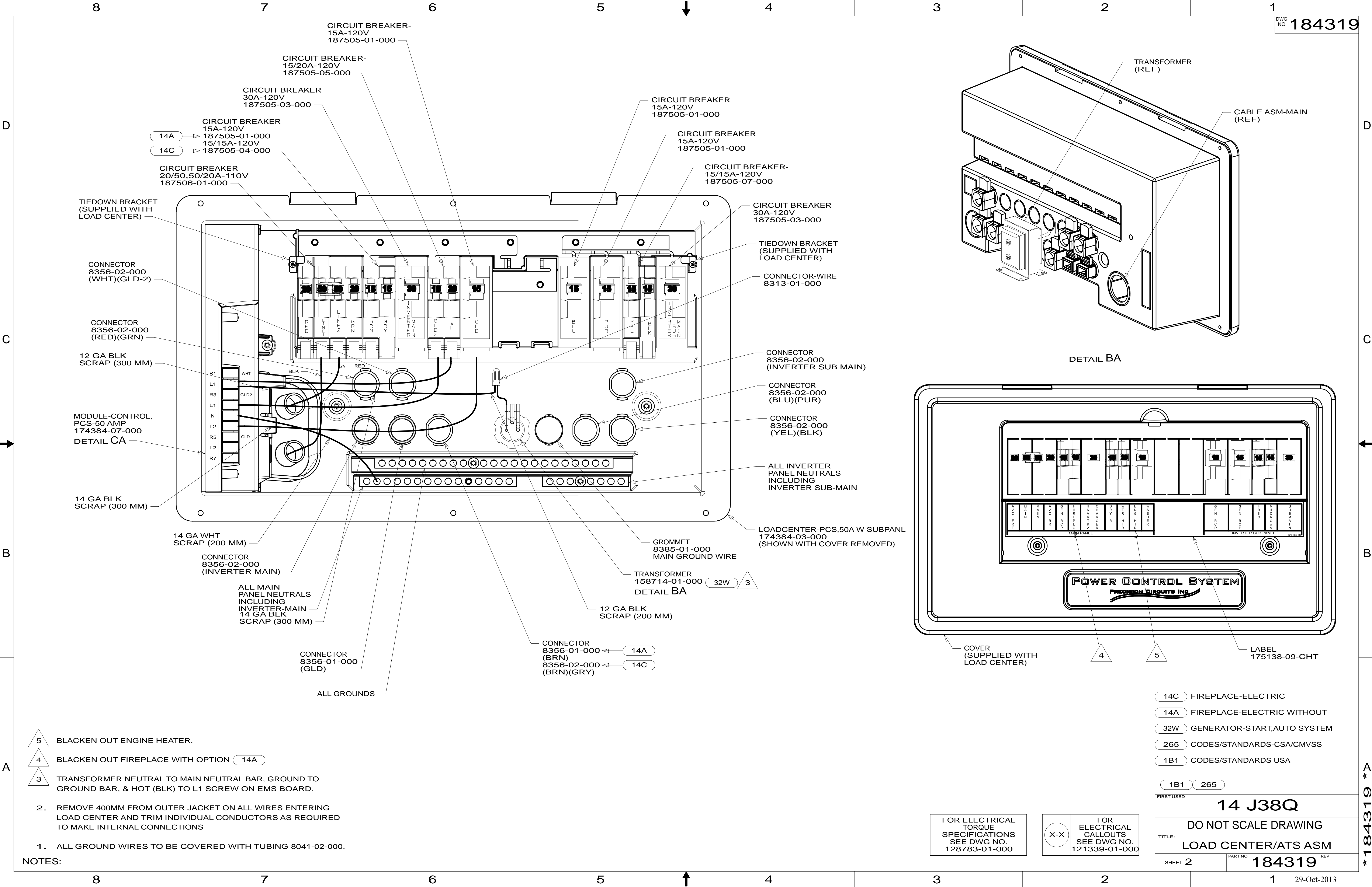
SHEET 1 OF 3 PART NO **184319** REV

REF: 1 29-Oct-2013

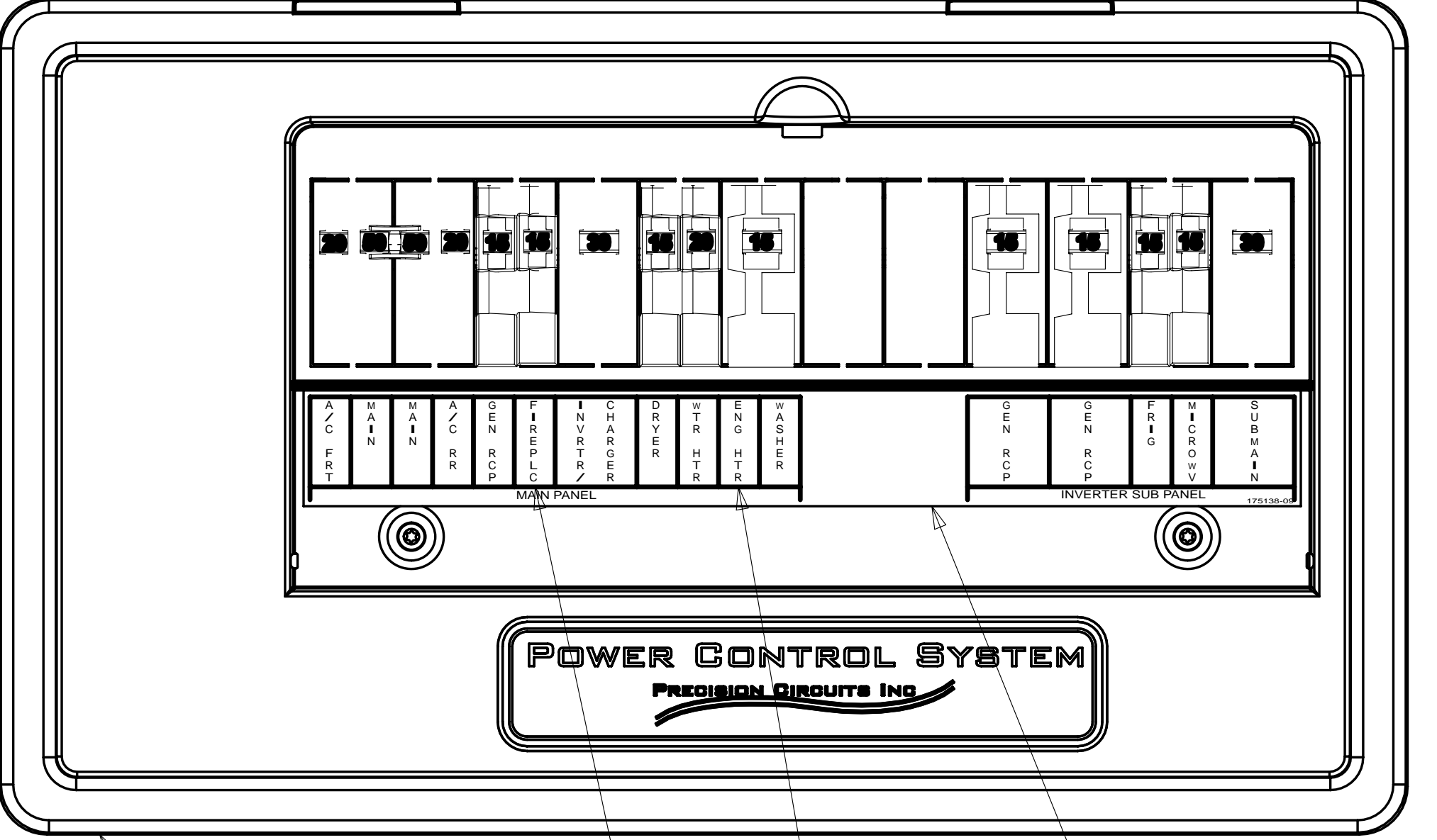
FOR ELECTRICAL TORQUE SPECIFICATIONS SEE DWG NO. 128783-01-000

X-X FOR ELECTRICAL CALLOUTS SEE DWG NO. 121339-01-000

* 184319 * * A



DETAIL BA



COVER (SUPPLIED WITH LOAD CENTER)

LABEL 175138-09-CHT

- 5 BLACKEN OUT ENGINE HEATER.
- 4 BLACKEN OUT FIREPLACE WITH OPTION 14A
- 3 TRANSFORMER NEUTRAL TO MAIN NEUTRAL BAR, GROUND TO GROUND BAR, & HOT (BLK) TO L1 SCREW ON EMS BOARD.

2. REMOVE 400MM FROM OUTER JACKET ON ALL WIRES ENTERING LOAD CENTER AND TRIM INDIVIDUAL CONDUCTORS AS REQUIRED TO MAKE INTERNAL CONNECTIONS

1. ALL GROUND WIRES TO BE COVERED WITH TUBING 8041-02-000.

NOTES:

- 14C FIREPLACE-ELECTRIC
- 14A FIREPLACE-ELECTRIC WITHOUT
- 32W GENERATOR-START,AUTO SYSTEM
- 265 CODES/STANDARDS-CSA/CMVSS
- 1B1 CODES/STANDARDS USA

1B1 265

FIRST USED 14 J38Q

DO NOT SCALE DRAWING

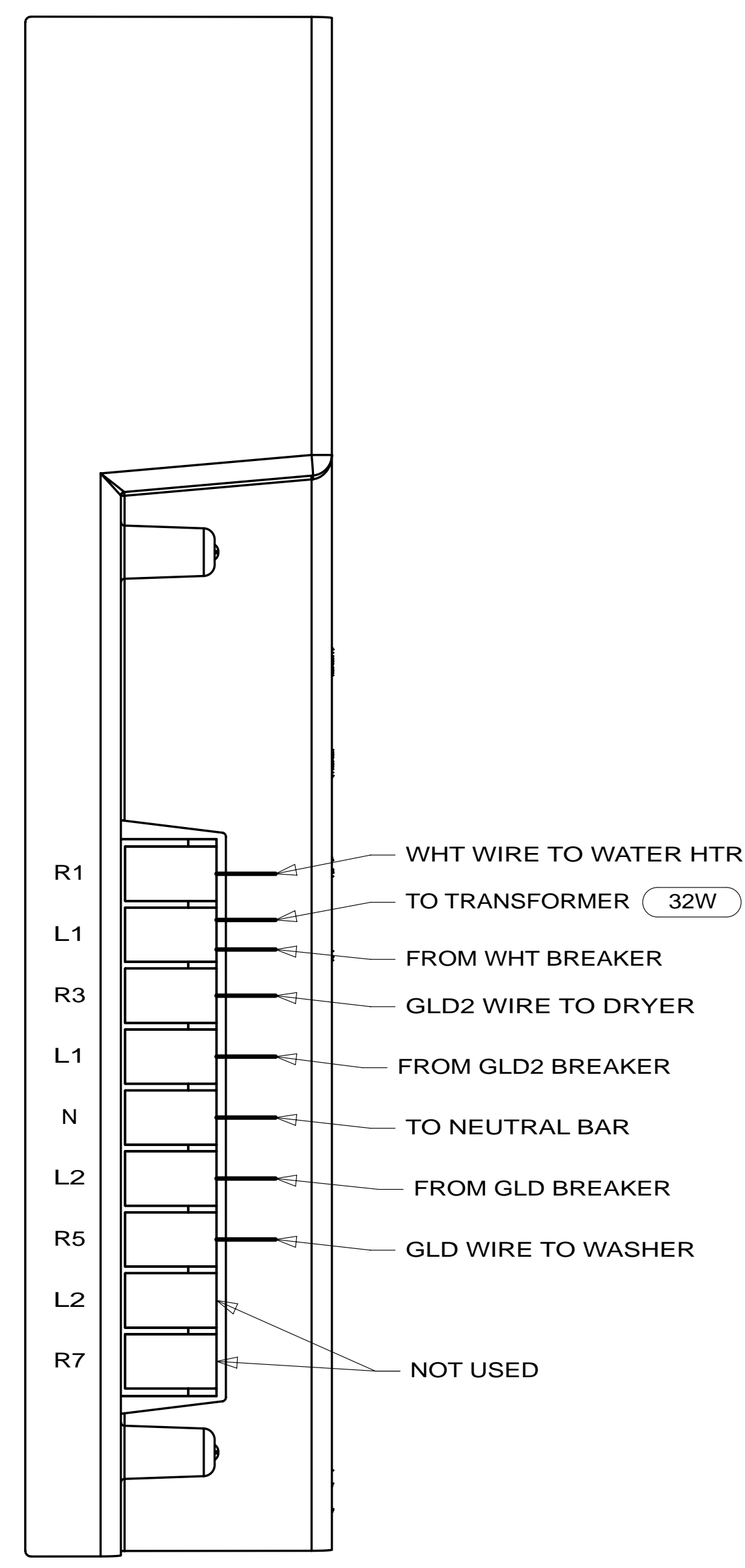
TITLE: LOAD CENTER/ATS ASM

SHEET 2 PART NO 184319 REV

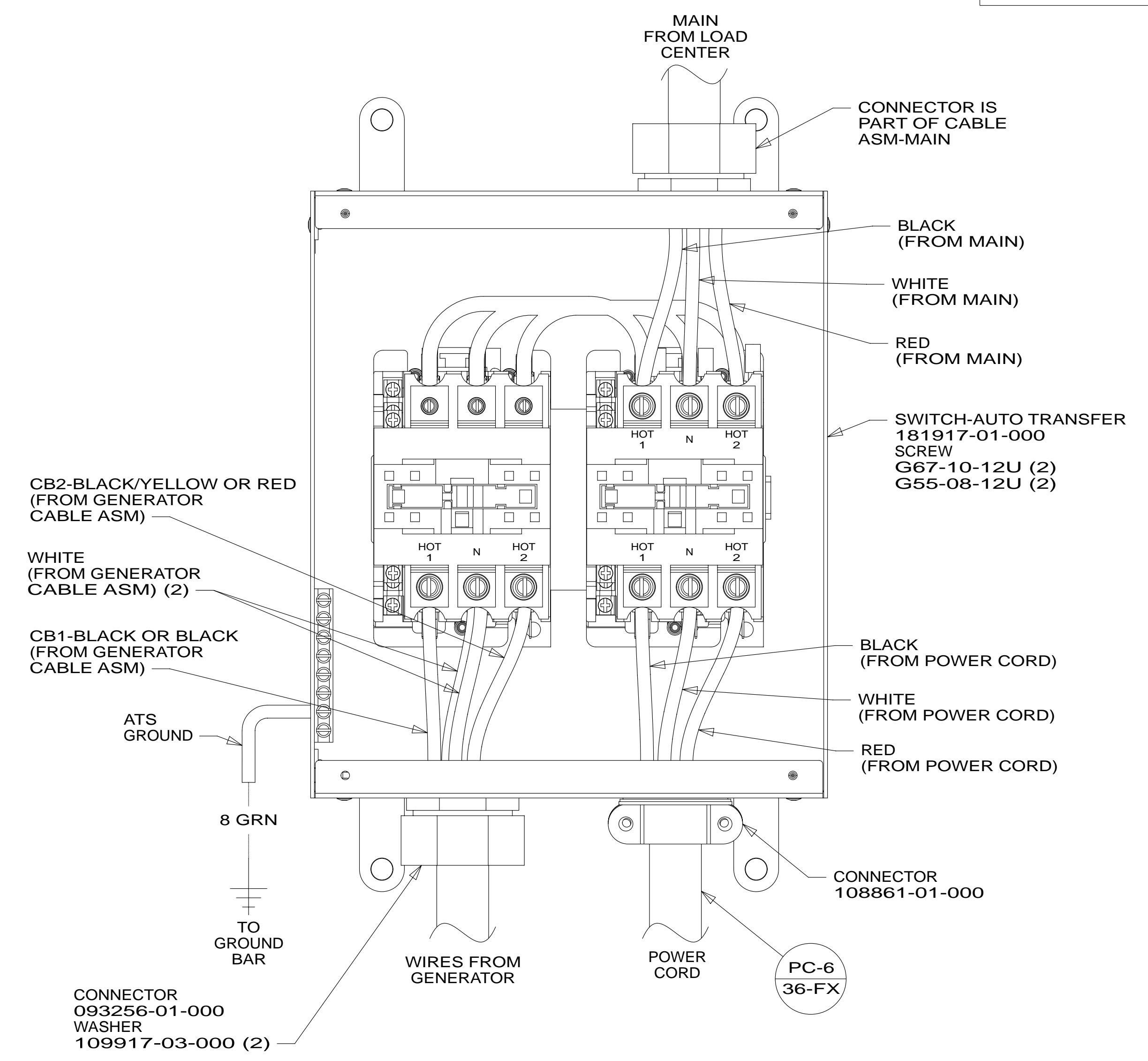
FOR ELECTRICAL TORQUE SPECIFICATIONS SEE DWG NO. 128783-01-000

FOR ELECTRICAL CALLOUTS SEE DWG NO. 121339-01-000

* 184319 * A



DETAIL CA



- (32W) GENERATOR-START,AUTO SYSTEM
- (265) CODES/STANDARDS-CSA/CMVSS
- (1B1) CODES/STANDARDS USA

(1B1) (265)

FOR ELECTRICAL TORQUE SPECIFICATIONS SEE DWG NO. 128783-01-000

FOR ELECTRICAL CALLOUTS SEE DWG NO. 121339-01-000

FIRST USED	14 J38Q	
TITLE:	DO NOT SCALE DRAWING	
	LOAD CENTER/ATS ASM	
SHEET 3	PART NO. 184319	REV

* 184319 * A