



DANGER

Danger of electrical shock, burns or death. Always remove all power sources before attempting any repair, service or diagnostic work. Power can be present from shore power, generator, inverter or battery. All power sources must be disabled and secured before performing any service.



CAUTION

If you lack the skills, tools or equipment to perform diagnostic or repair work leave such work to an authorized Winnebago Industries dealer or other qualified shop.

8	7	6	5	4	3	2	1
DRAWING NO.	UNIT	SHEETS					
184239-01	J32H	1,2,3,10					
184239-02	J37F	1,7,8,9,10					
184239-03	J35P	1,2,3,10					
184239-04	J38Q	1,4,5,6,10					

		J32H	J37F	J35P	J38Q
CABLE ASM-CHASSIS GND EXT (BLK)	16Z 16L 16A	133566-12-031	133567-12-045	133566-12-031	133567-12-013
CHASSIS BATTERY DISCONNECT RETURN (PUR)	16Z 16L 16A	141415-12-035	141416-12-046	141415-12-035	141416-12-049
CABLE ASM-CHASSIS BATTERY DISCONNECT SUPPLY (RED)	16Z 16L 16A	141415-32-013	141416-32-015	141415-32-011	141416-32-046
CABLE ASM-COACH BATTERY (YEL)		141416-52-017	141416-52-028	141416-52-017	141416-52-015
CABLE ASM-COACH BATTERY GND (BLK)		133567-12-006	133567-12-028	133567-12-006	133567-12-038
CABLE ASM-STARTER (RED)		141416-32-033	141416-32-044	141416-32-033	141416-32-010
CABLE ASM-GENERATOR (GRN)	321 52P	141415-42-075	141415-42-073	141415-42-079	141415-42-073
WIRE ASM-INVERTER	401	154845-02-012		154845-02-012	
LEVELING SYSTEM POWER CABLE (BLU)	60M	141415-29-062	141415-29-072	141415-29-058	141415-29-071
LEVELING SYSTEM GND CABLE (BLK)	60M	133566-11-008	133566-11-008	133566-11-008	133566-11-008
CABLE ASM (ORG) FROM COACH BATTERY TO INVERTER FUSE			175207-62-006		175207-62-012
CABLE ASM (ORG) FROM INVERTER FUSE TO INVERTER BATT DISCONNECT			175207-62-028		175207-62-012
CABLE ASM (ORG) FROM BATTERY DISCONNECT TO POSITIVE POST ON INVERTER			175207-62-008		175207-62-008
CABLE ASM (BLK) FROM COACH BATTERY TO INVERTER NEGATIVE TERMINAL			175211-01-030		175211-01-023
CABLE ASM-TEMPERATURE			2		175385-03-000
CABLE ASM (YEL) JUMPER BETWEEN POSITIVE POSTS ON COACH BATTERY			141417-52-004 141417-51-002 (2) 15L		141417-52-004 141417-51-002 (2)
CABLE ASM (BLK) JUMPER BETWEEN NEGATIVE POSTS ON COACH BATTERY			133568-12-004 133568-11-002 (2) 15L		133568-12-004 133568-11-002 (2)
CABLE ASM-CHASSIS BATTERY FUSE (RED)		141415-32-003	141415-32-003	141415-32-003	141415-32-005
CABLE ASM-COACH BATTERY FUSE (YEL)		141416-52-006	141416-52-003	141416-52-006	141416-52-003

1

2

- 15L RESIDENTIAL REFRIGERATOR PKG
- 16A FORD 26,000#-22.5 AL WHL
- 52P GEN-5.5KW ONAN-GAS-MARQ GOLD
- 321 GENERATOR PREP KIT
- 60M HYDRAULIC LEVEL JACKS-AUTO
- 401 INVERTER-DC/AC, 1000 WATT
- 16Z FORD 24,000#-22.5 ALUM WHEEL
- 16L FORD 22,000#-22.5 AL WHL
- 265 CODES/STANDARDS-CSA/CMVSS
- 1B1 CODES/STANDARDS USA
- 1B1 265

WINNEBAGO COPYRIGHT 2014 WINNEBAGO INDUSTRIES, INC.

DFTR _____ ORIG. DATE _____
 CKR _____ ALL DIMENSIONS ARE IN MILLIMETERS
 P.E. _____
 M.E. _____ FIRST USED _____
 DSNR _____ **14 J-SERIES**

UNSPECIFIED TOLERANCES ARE:
 WHOLE DIM (X) : 3
 ONE-PLACE (X.X) : 1.5
 TWO-PLACE (X.XX) : 0.50
 ANGLE : 1°

THIRD ANGLE PROJECTION

DO NOT SCALE DRAWING REFER TO ES0018 FOR FASTENER TIGHTENING GUIDELINES

TITLE: **BATTERY INSTL,FD**

SHEET 1 OF 10 PART NO **184239** REV _____

REF: 1 01-May-2014

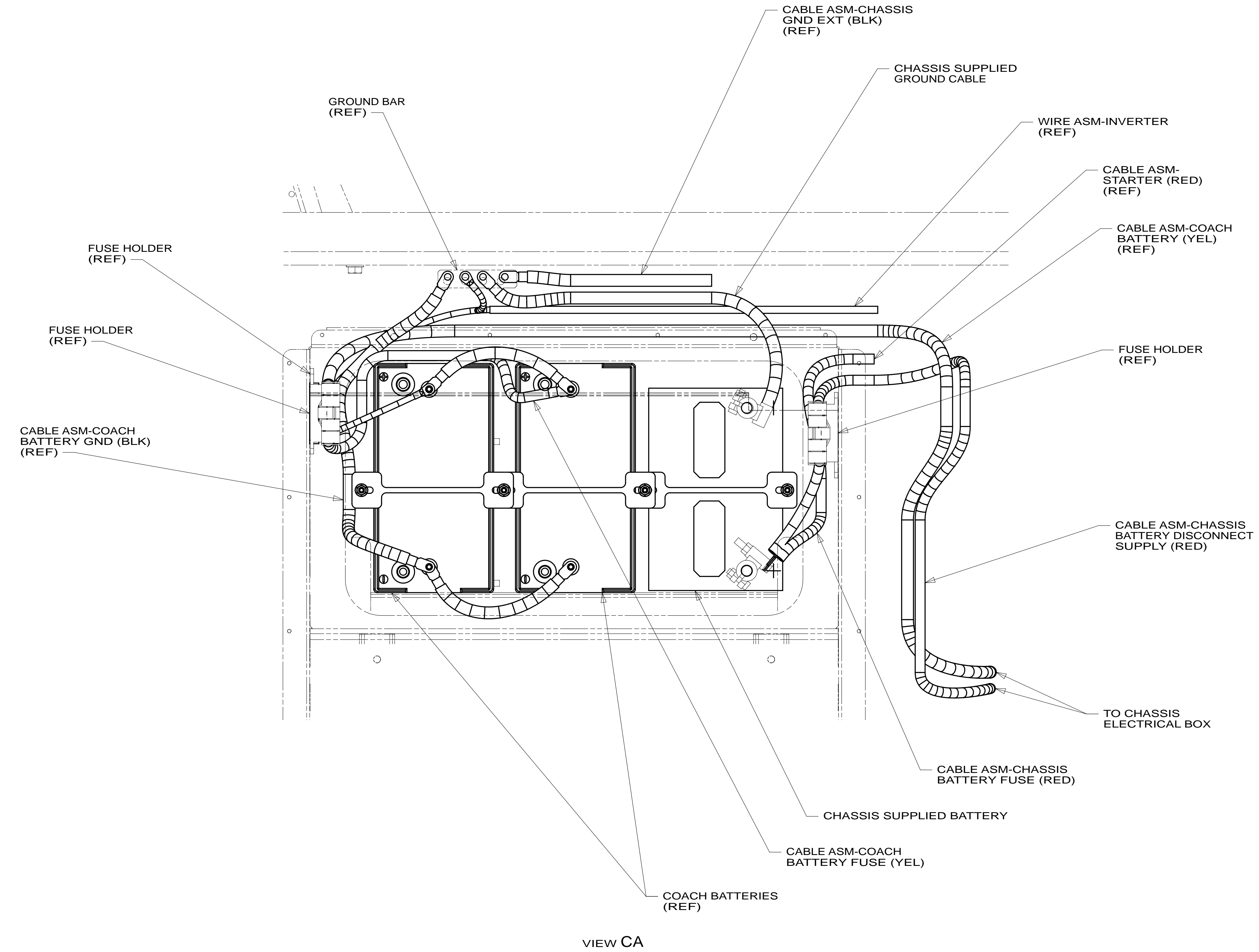
FOR ELECTRICAL TORQUE SPECIFICATIONS SEE DWG NO. 128783-01-000

FOR ELECTRICAL CALLOUTS SEE DWG NO. 121339-01-000

2 CABLE ASM-TEMPERATURE IS PART OF WIRE ASM-CHASSIS.
 1 BATTERY CABLES MUST BE INSTALLED TO STARTER MOTOR BEFORE ENGINE WIRING HARNESS AND ROUTED IN SUCH A MANNER AS TO PREVENT ANY POSSIBLE DEGRADATION FROM THE EXHUAUST SYSTEM.

* 184239 * A

INDICATES COMPONENTS TO BE DETERMINED



VIEW CA

265 CODES/STANDARDS-CSA/CMVSS

1B1 CODES/STANDARDS USA

1B1 265

FIRST USED **14 J-SERIES**

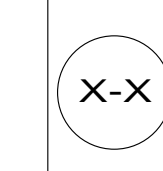
DO NOT SCALE DRAWING

TITLE: **BATTERY INSTL,FD**

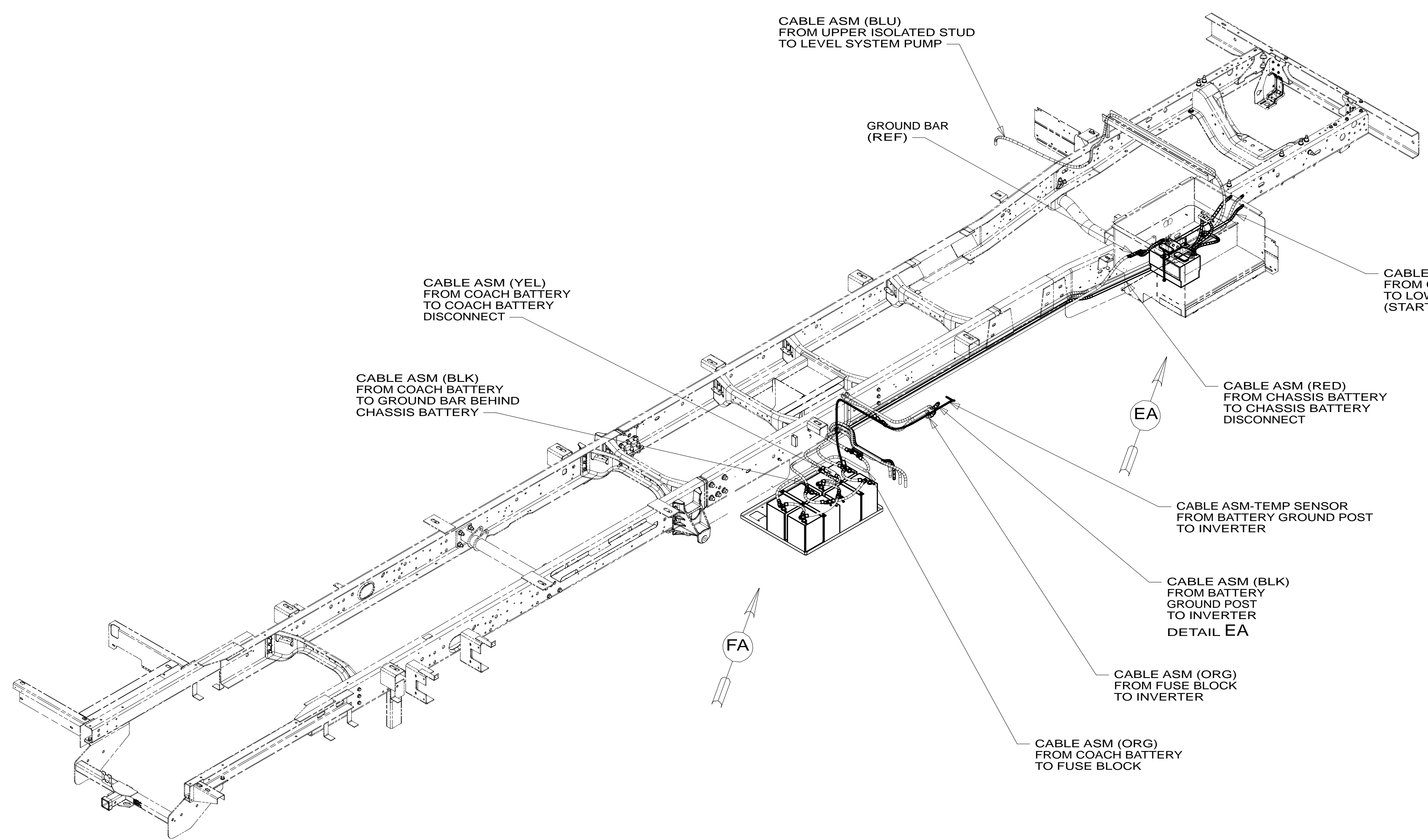
SHEET 3 PART NO **184239** REV

FOR ELECTRICAL TORQUE SPECIFICATIONS SEE DWG NO. 128783-01-000

FOR ELECTRICAL CALLOUTS SEE DWG NO. 121339-01-000



*A 184239 *A



265 CODES/STANDARDS-CSA/CMVSS

1B1 CODES/STANDARDS USA

1B1 265

FIRST USED **14 J-SERIES**

DO NOT SCALE DRAWING

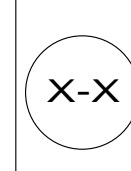
TITLE: **BATTERY INSTL,FD**

SHEET 4 PART NO **184239** REV

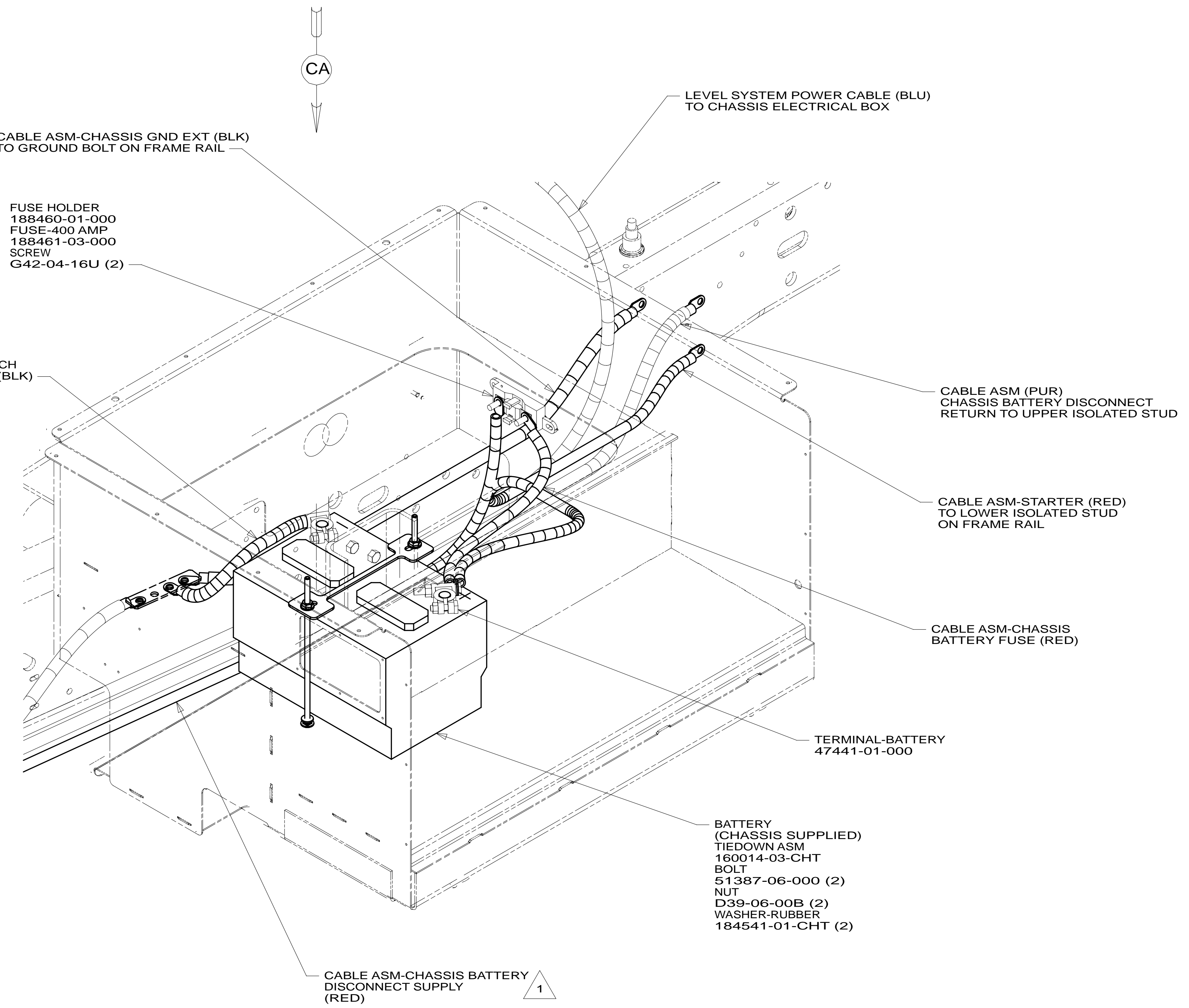
1 01-May-2014

FOR ELECTRICAL TORQUE SPECIFICATIONS SEE DWG NO. 128783-01-000

FOR ELECTRICAL CALLOUTS SEE DWG NO. 121339-01-000



* 184239 * A



VIEW EA

- 2 SEE WIRING INSTL-CHASSIS FOR ADDITIONAL INFORMATION.
- 1 SEE CHASSIS ELECTRICAL BOX ASM FOR ADDITIONAL INFORMATION.

NOTES:

FOR ELECTRICAL TORQUE SPECIFICATIONS SEE DWG NO. 128783-01-000

FOR ELECTRICAL CALLOUTS SEE DWG NO. 121339-01-000

- 401 INVERTER-DC/AC, 1000 WATT
- 265 CODES/STANDARDS-CSA/CMVSS
- 1B1 CODES/STANDARDS USA

1B1 265

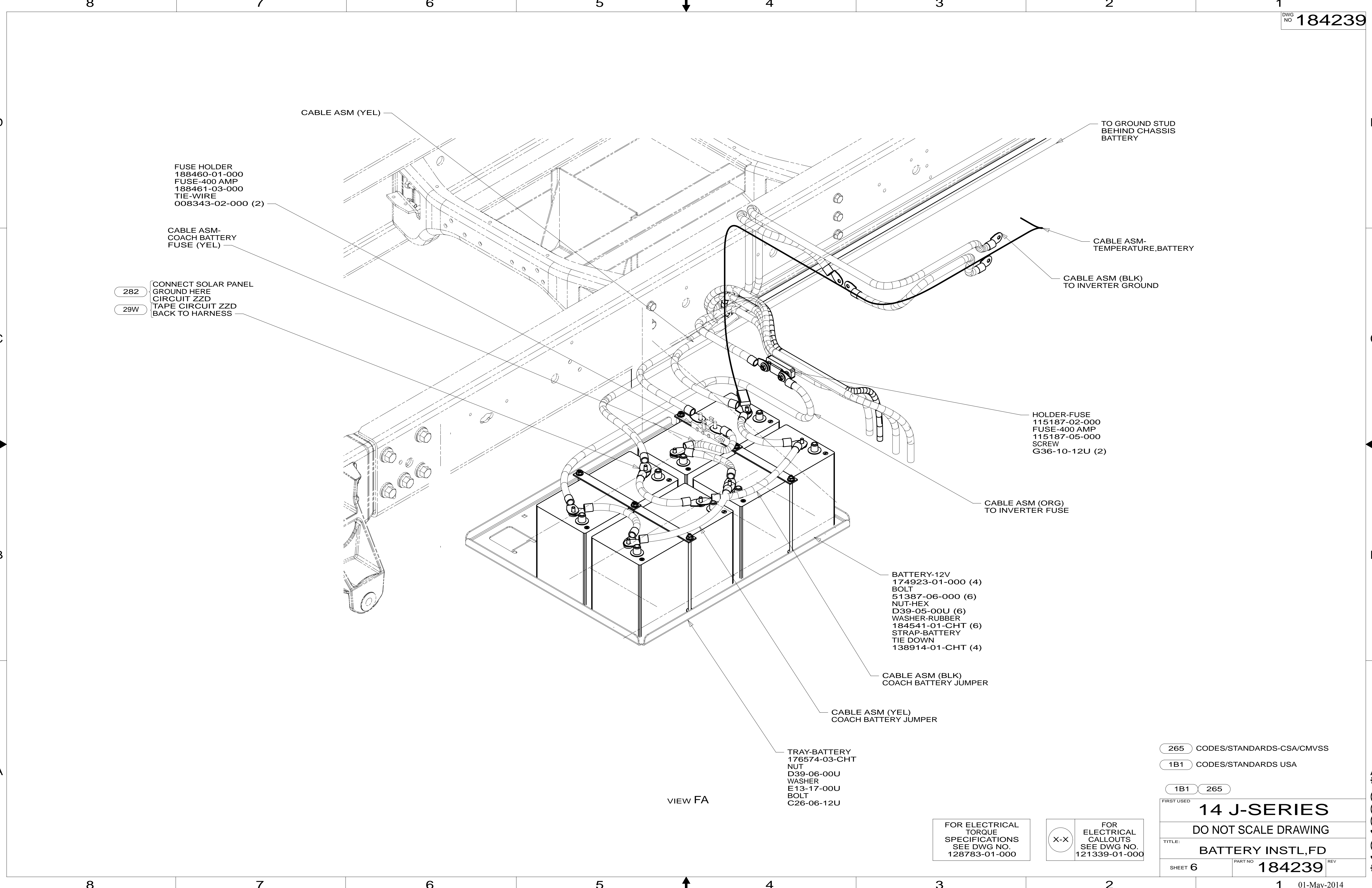
14 J-SERIES

DO NOT SCALE DRAWING

TITLE: **BATTERY INSTL,FD**

SHEET 5 PART NO **184239** REV

* 184239 * A



FUSE HOLDER
188460-01-000
FUSE-400 AMP
188461-03-000
TIE-WIRE
008343-02-000 (2)

CABLE ASM-
COACH BATTERY
FUSE (YEL)

282 CONNECT SOLAR PANEL
GROUND HERE
CIRCUIT ZSD
29W TAPE CIRCUIT ZSD
BACK TO HARNESS

TO GROUND STUD
BEHIND CHASSIS
BATTERY

CABLE ASM-
TEMPERATURE,BATTERY

CABLE ASM (BLK)
TO INVERTER GROUND

HOLDER-FUSE
115187-02-000
FUSE-400 AMP
115187-05-000
SCREW
G36-10-12U (2)

CABLE ASM (ORG)
TO INVERTER FUSE

BATTERY-12V
174923-01-000 (4)
BOLT
51387-06-000 (6)
NUT-HEX
D39-05-00U (6)
WASHER-RUBBER
184541-01-CHT (6)
STRAP-BATTERY
TIE DOWN
138914-01-CHT (4)

CABLE ASM (BLK)
COACH BATTERY JUMPER

CABLE ASM (YEL)
COACH BATTERY JUMPER

TRAY-BATTERY
176574-03-CHT
NUT
D39-06-00U
WASHER
E13-17-00U
BOLT
C26-06-12U

VIEW FA

265 CODES/STANDARDS-CSA/CMVSS

1B1 CODES/STANDARDS USA

1B1 265

FIRST USED **14 J-SERIES**

DO NOT SCALE DRAWING

TITLE: **BATTERY INSTL,FD**

SHEET 6 PART NO **184239** REV

FOR ELECTRICAL
TORQUE
SPECIFICATIONS
SEE DWG NO.
128783-01-000

X-X FOR
ELECTRICAL
CALLOUTS
SEE DWG NO.
121339-01-000

* 184239 * A

8 7 6 5 4 3 2 1

D

D

C

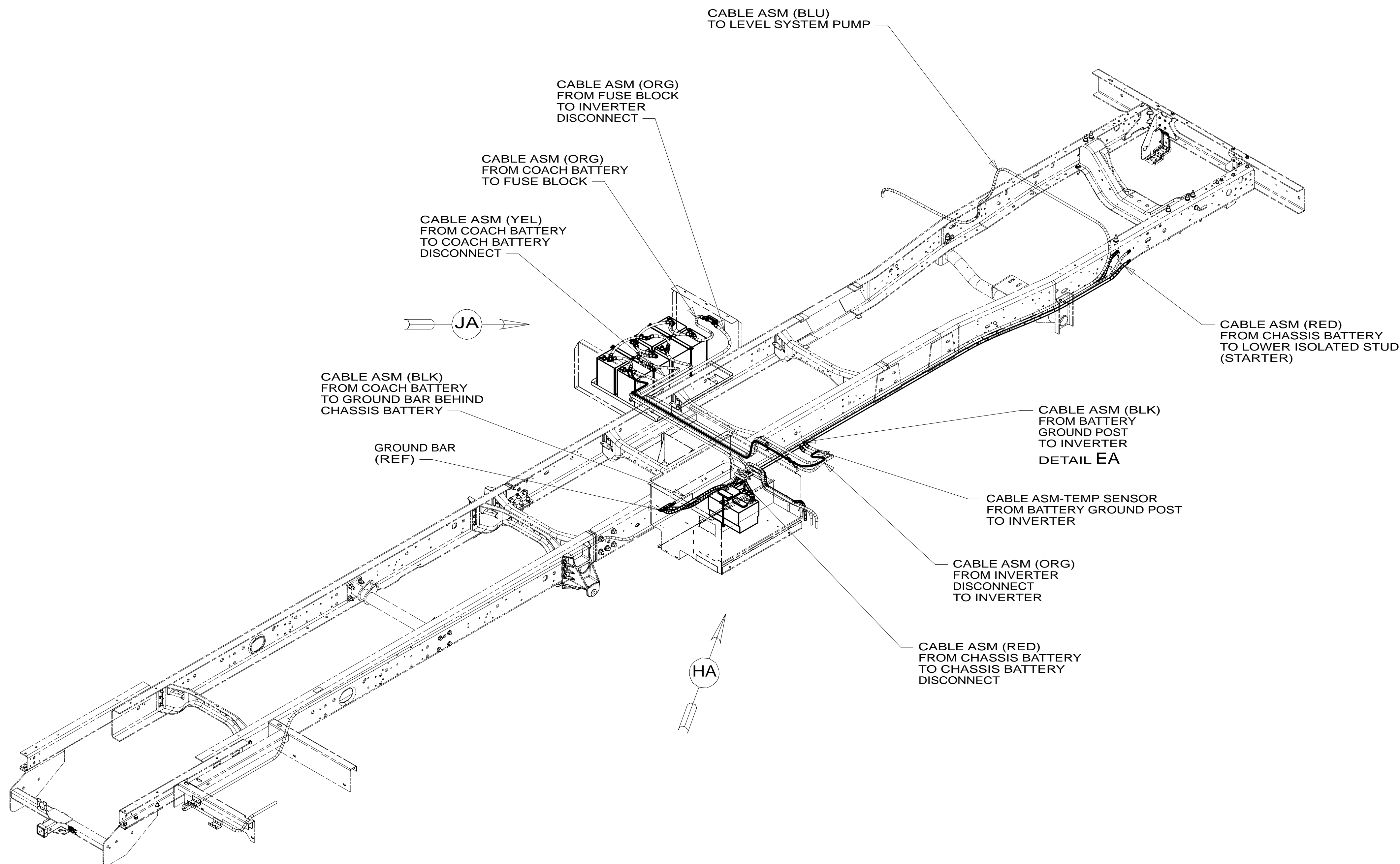
C

B

B

A

A



265 CODES/STANDARDS-CSA/CMVSS

1B1 CODES/STANDARDS USA

1B1 265

FIRST USED **14 J-SERIES**

DO NOT SCALE DRAWING

TITLE: **BATTERY INSTL,FD**

SHEET 7 PART NO **184239** REV

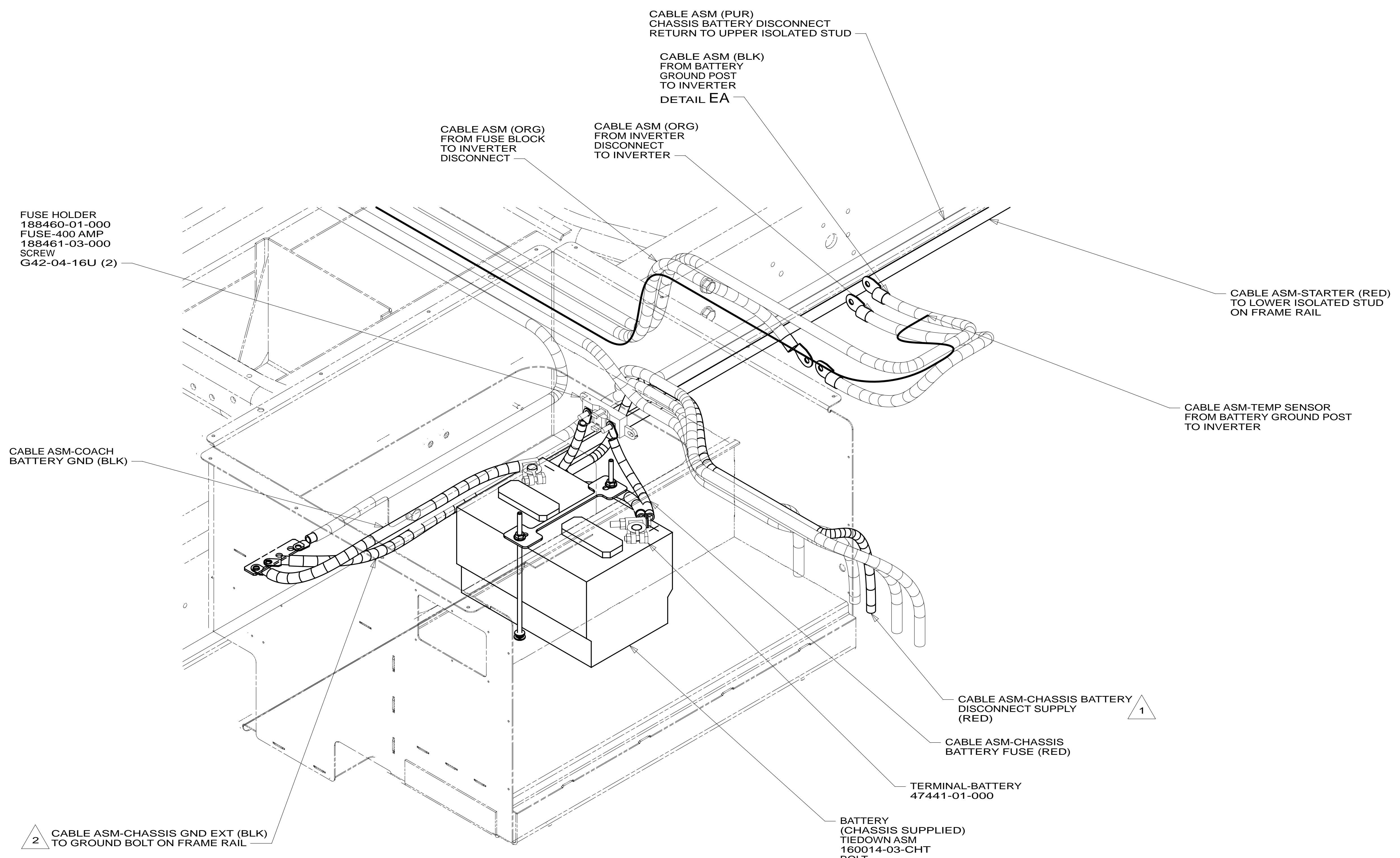
1 01-May-2014

FOR ELECTRICAL TORQUE SPECIFICATIONS SEE DWG NO. 128783-01-000

X-X FOR ELECTRICAL CALLOUTS SEE DWG NO. 121339-01-000

8 7 6 5 4 3 2 1

* 184239 * A



VIEW HA

- NOTES:
- 2 SEE WIRING INSTL-CHASSIS FOR ADDITIONAL INFORMATION.
 - 1 SEE CHASSIS ELECTRICAL BOX ASM FOR ADDITIONAL INFORMATION.

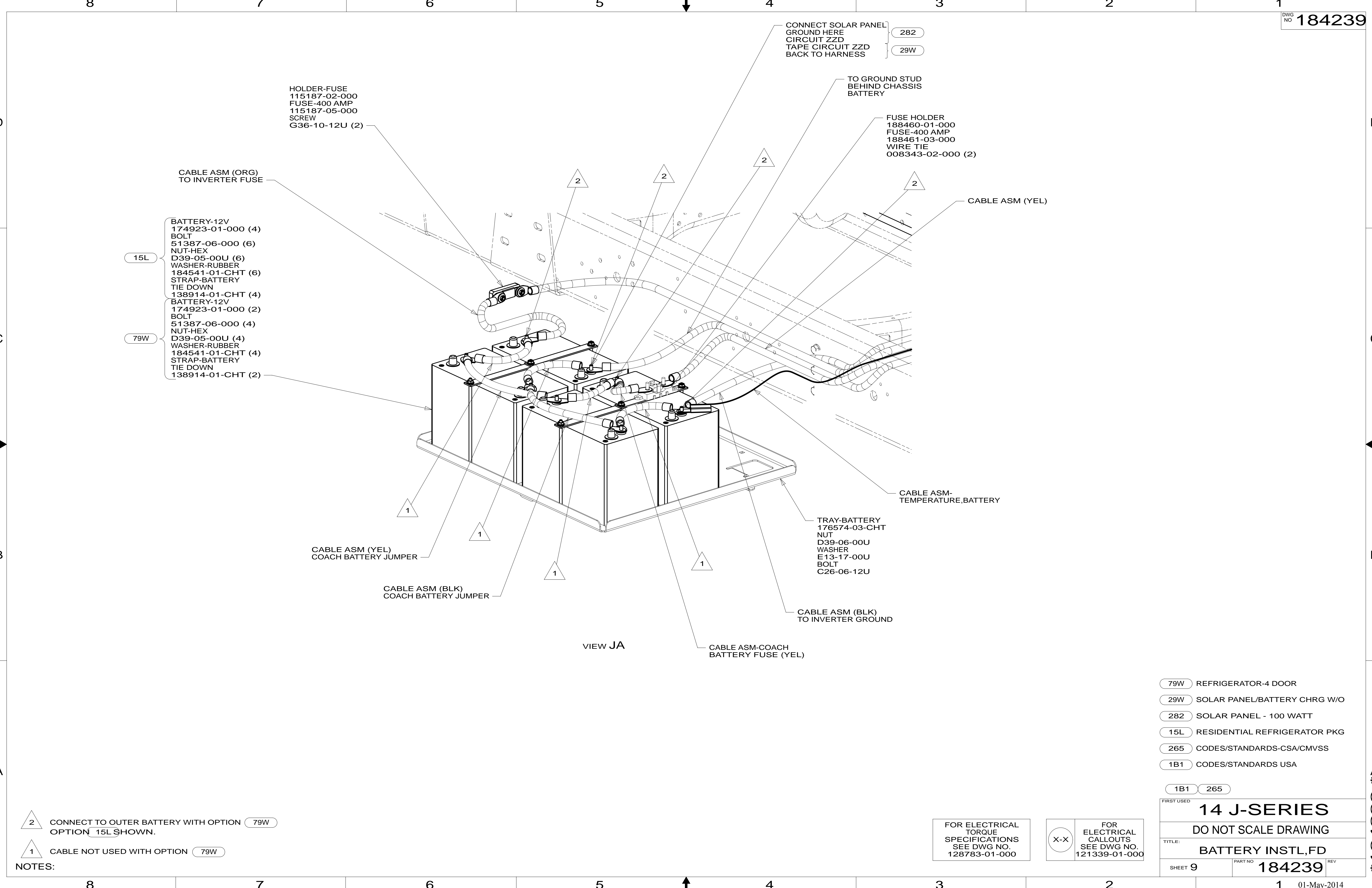
- 401 INVERTER-DC/AC, 1000 WATT
- 265 CODES/STANDARDS-CSA/CMVSS
- 1B1 CODES/STANDARDS USA

FIRST USED	1B1	265
14 J-SERIES		
DO NOT SCALE DRAWING		
TITLE: BATTERY INSTL,FD		
SHEET 8	PART NO 184239	REV

FOR ELECTRICAL TORQUE SPECIFICATIONS SEE DWG NO. 128783-01-000

FOR ELECTRICAL CALLOUTS SEE DWG NO. 121339-01-000

* 184239 * A



- 15L BATTERY-12V
174923-01-000 (4)
BOLT
51387-06-000 (6)
NUT-HEX
D39-05-00U (6)
WASHER-RUBBER
184541-01-CHT (6)
STRAP-BATTERY
TIE DOWN
138914-01-CHT (4)
- 79W BATTERY-12V
174923-01-000 (2)
BOLT
51387-06-000 (4)
NUT-HEX
D39-05-00U (4)
WASHER-RUBBER
184541-01-CHT (4)
STRAP-BATTERY
TIE DOWN
138914-01-CHT (2)

- 79W REFRIGERATOR-4 DOOR
- 29W SOLAR PANEL/BATTERY CHRГ W/O
- 282 SOLAR PANEL - 100 WATT
- 15L RESIDENTIAL REFRIGERATOR PKG
- 265 CODES/STANDARDS-CSA/CMVSS
- 1B1 CODES/STANDARDS USA

FIRST USED	
14 J-SERIES	
DO NOT SCALE DRAWING	
TITLE: BATTERY INSTL,FD	
SHEET 9	PART NO 184239 REV
01-May-2014	

FOR ELECTRICAL TORQUE SPECIFICATIONS SEE DWG NO. 128783-01-000

FOR ELECTRICAL CALLOUTS SEE DWG NO. 121339-01-000

- NOTES:
- 2 CONNECT TO OUTER BATTERY WITH OPTION 79W
OPTION 15L SHOWN.
 - 1 CABLE NOT USED WITH OPTION 79W

* 184239 * A

GENERATOR

INVERTER

LEVELING PUMP

BATTERY DISCONNECT SWITCH

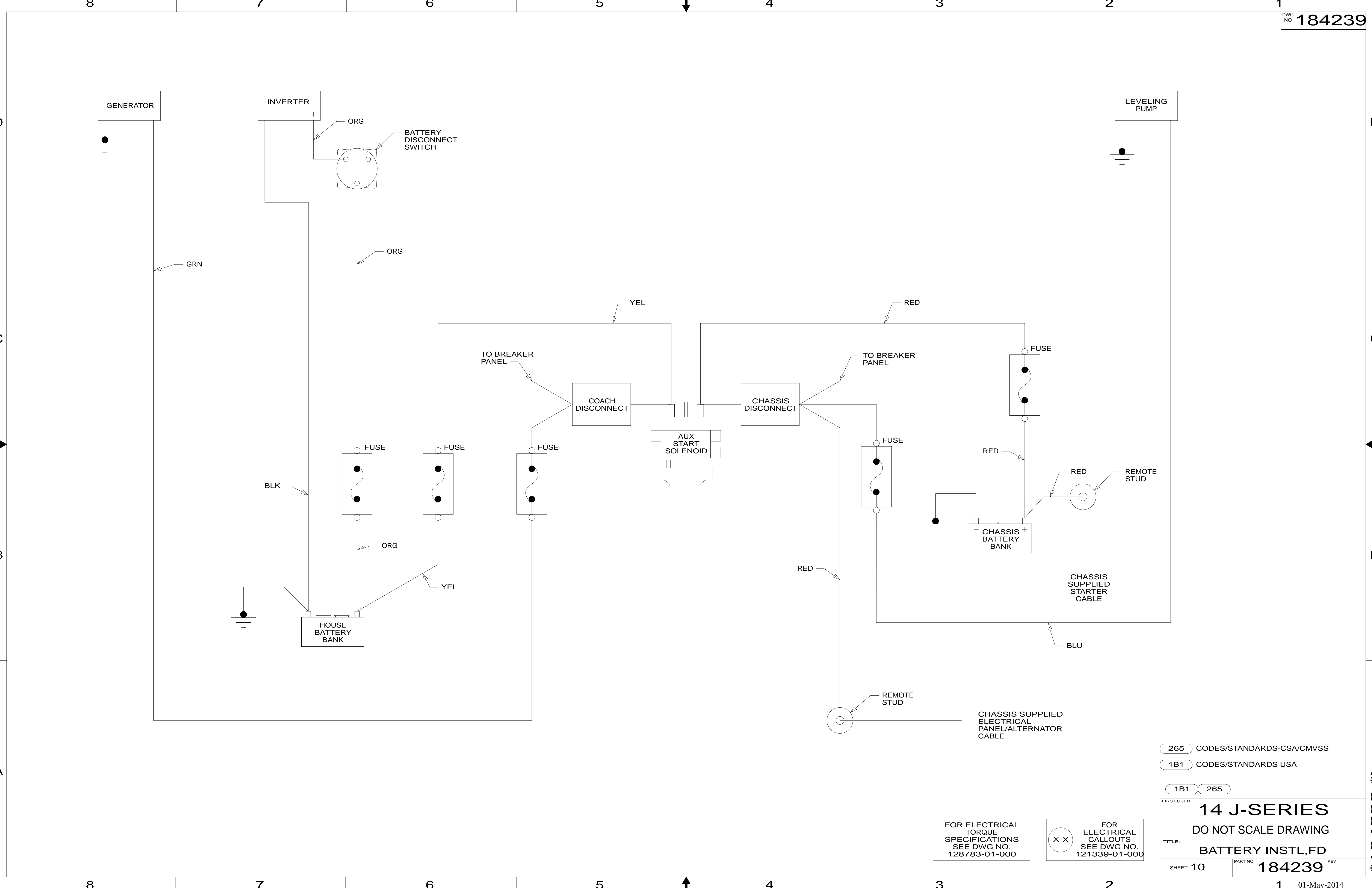
HOUSE BATTERY BANK

CHASSIS BATTERY BANK

AUX START SOLENOID

CHASSIS SUPPLIED STARTER CABLE

CHASSIS SUPPLIED ELECTRICAL PANEL/ALTERNATOR CABLE



265 CODES/STANDARDS-CSA/CMVSS

1B1 CODES/STANDARDS USA

1B1 265

FIRST USED 14 J-SERIES

DO NOT SCALE DRAWING

TITLE: BATTERY INSTL,FD

SHEET 10 PART NO 184239 REV

01-May-2014

FOR ELECTRICAL TORQUE SPECIFICATIONS SEE DWG NO. 128783-01-000

FOR ELECTRICAL CALLOUTS SEE DWG NO. 121339-01-000

* 184239 * A