



DANGER

Danger of electrical shock, burns or death. Always remove all power sources before attempting any repair, service or diagnostic work. Power can be present from shore power, generator, inverter or battery. All power sources must be disabled and secured before performing any service.

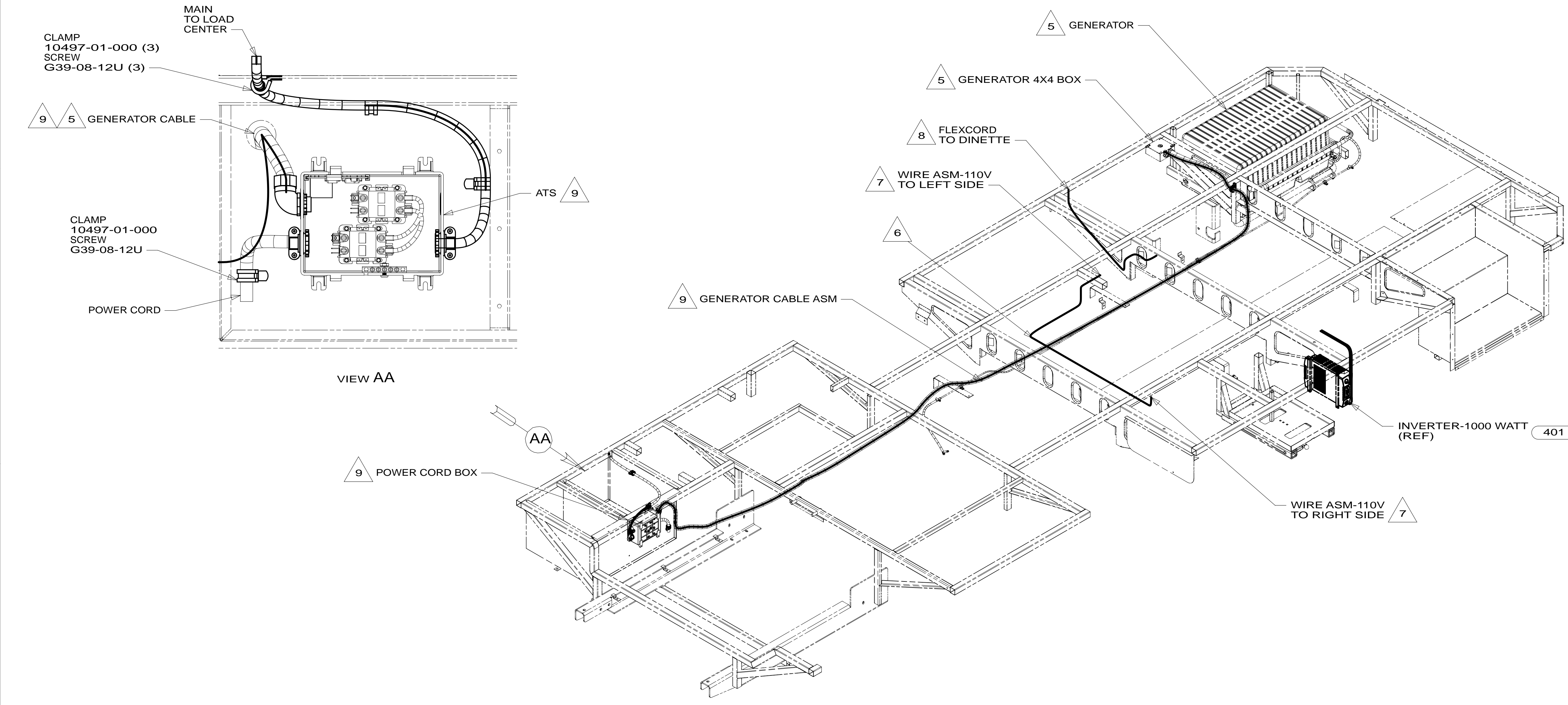


CAUTION

If you lack the skills, tools or equipment to perform diagnostic or repair work leave such work to an authorized Winnebago Industries dealer or other qualified shop.

DRAWING NO.	FEATURES
184232-01	-----
184232-11	1B1 12D
184232-15	265 12D

RELEASE	REV/DATE	DWG NO	184232
REV ZONE	REVISION RECORD	DATE	DFT-ORIG



- 9 SEE LOAD CENTER/ATS ASM FOR ADDITIONAL INFORMATION.
- 8 FLEX CORD IS PART OF WIRE ASM-CHASSIS.
- 7 WIRE ASM-110V PASSES THROUGH FLOOR IN THIS AREA.
- 6 WIRE ASM-110V ROUTED UNDER FLOOR IN THIS AREA.
- 5 SEE GENERATOR INSTL FOR ADDITIONAL INFORMATION.
- 4. SEE WIRING DIAGRAM-BODY,110V FOR ADDITIONAL INFORMATION.
- 3. ALL GROUND WIRE TO BE COVERED WITH TUBING 8041-02-000.
- 2. ALL 110V WIRE TO BE CLAMPED WITH CLAMP 10497-05-000 WITHIN 200MM OF OUTLET BOXES, USE SCREW G67-10-12B.
- 1. ALL WIRES TO BE SECURED WITH CLAMP 10495-01-000 OR CLIP 80734-01-000 EVERY 600MM. USE SCREW G67-10-12B UNLESS OTHERWISE SPECIFIED.

- 401 INVERTER-DC/AC, 1000 WATT
- 12D ELECTRICAL SYSTEM 30 AMP
- 265 CODES/STANDARDS-CSA/CMVSS
- 1B1 CODES/STANDARDS USA

1B1 265 12D

WINNEBAGO COPYRIGHT 2014 WINNEBAGO INDUSTRIES, INC.

DFT-ORIG	ORIG. DATE
CHKR	ALL DIMENSIONS ARE IN MILLIMETERS
P.E.	
M.E.	FIRST USED
DSNR	14 727K

UNSPECIFIED TOLERANCES ARE:

WHOLE DIM (X)	: 3
ONE-PLACE (X.X)	: 1.5
TWO-PLACE (X.XX)	: 0.50
ANGLE	: 1°

THIRD ANGLE PROJECTION

DO NOT SCALE DRAWING REFER TO ES0018 FOR FASTENER TIGHTENING GUIDELINES

TITLE: **WIRING INSTL-BODY,110V**

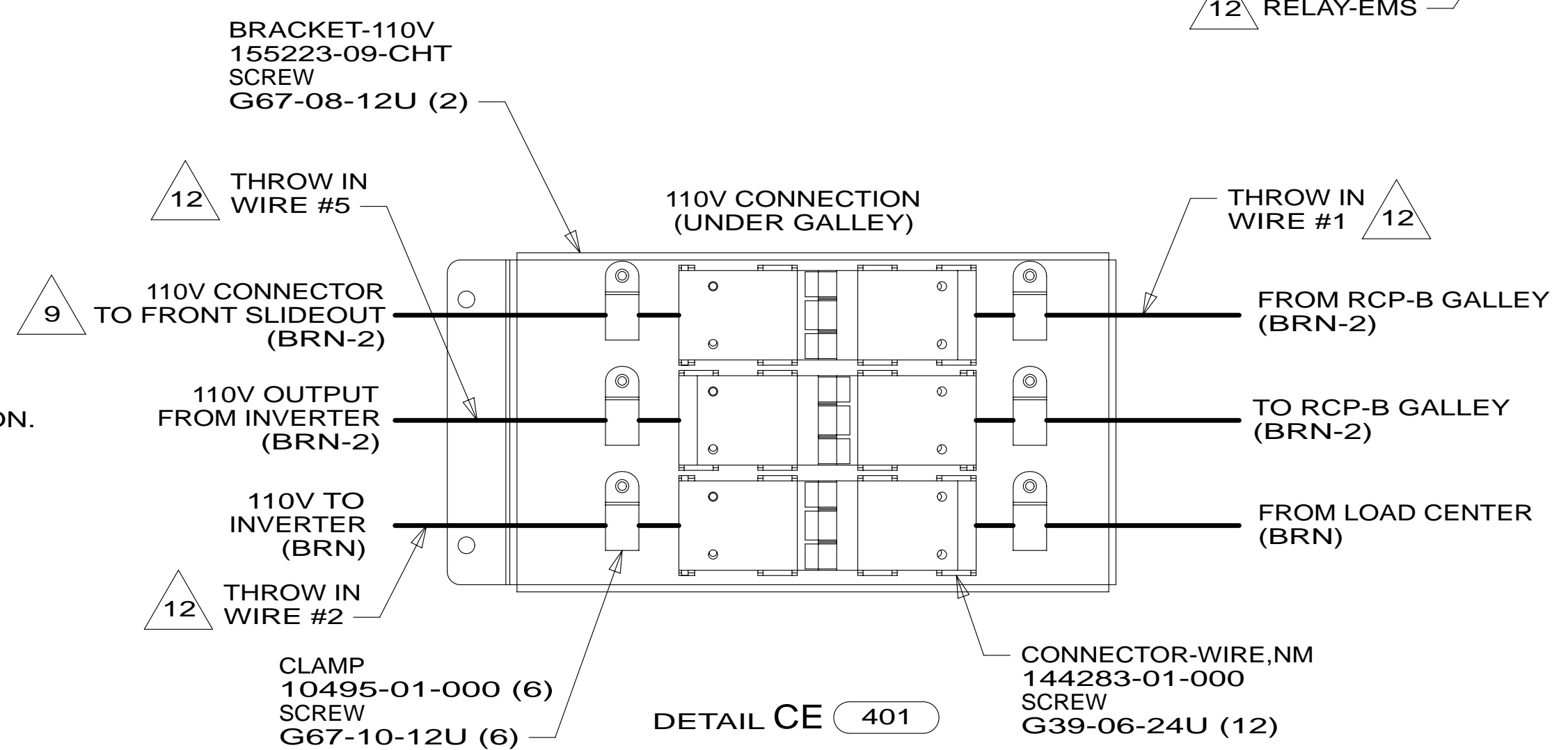
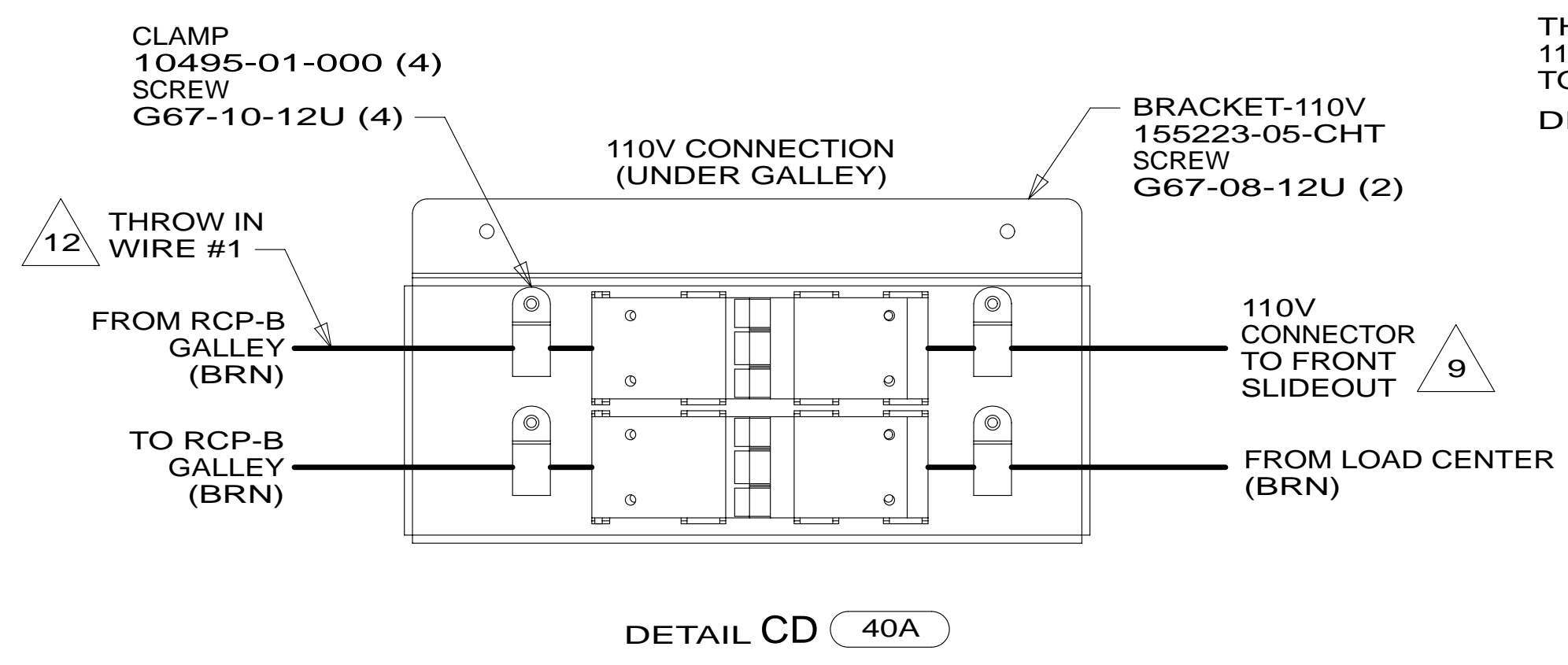
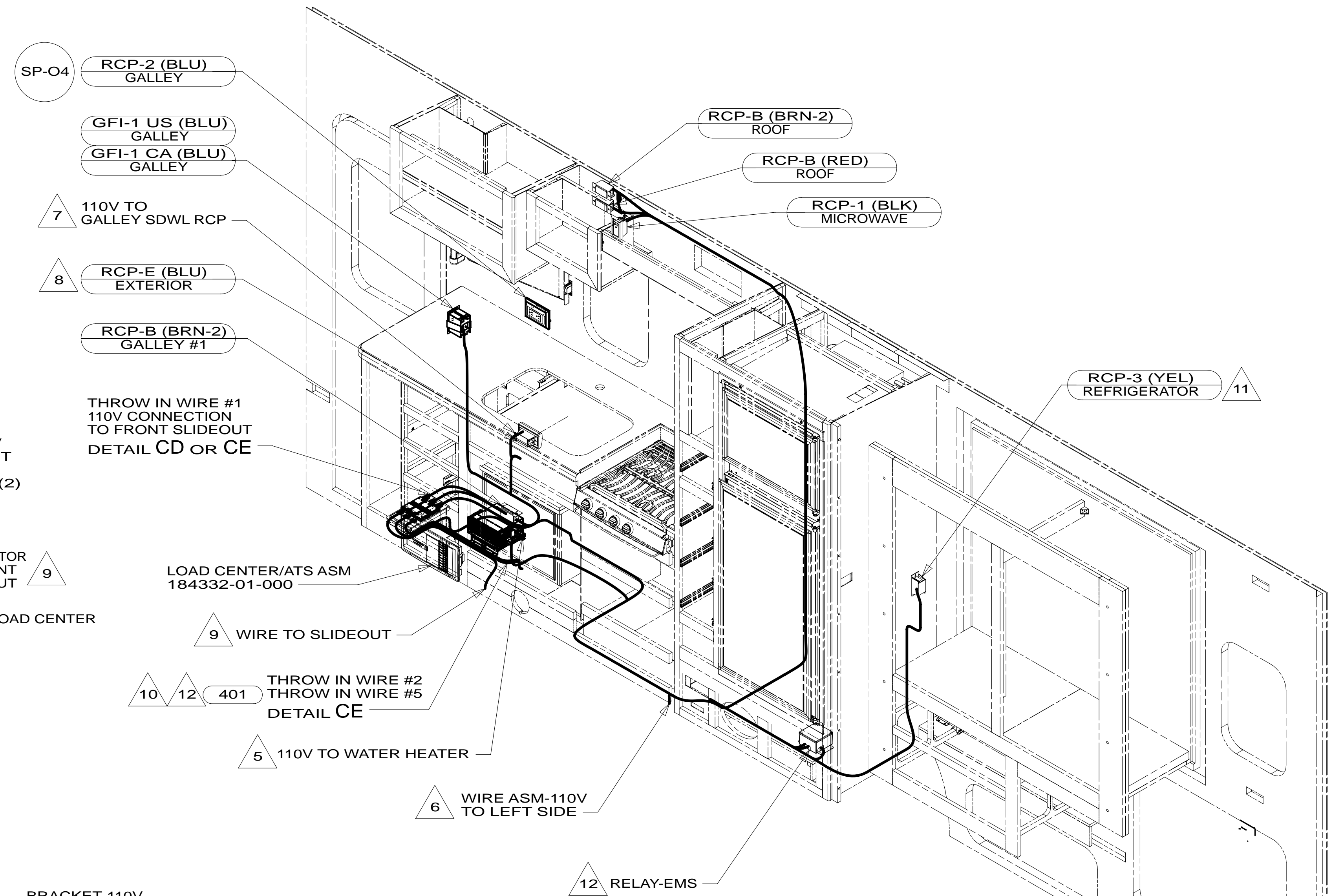
SHEET 1 OF 4 PART NO **184232** REV

REF: 1 28-May-2014

FOR ELECTRICAL TORQUE SPECIFICATIONS SEE DWG NO. 128783-01-000

X-X FOR ELECTRICAL CALLOUTS SEE DWG NO. 121339-01-000

* 184232 *



- NOTES:
- 1. ALL WIRES TO BE SECURED WITH CLAMP 10495-01-000 OR CLIP 80734-01-000 EVERY 600MM. USE SCREW G67-10-12B UNLESS OTHERWISE SPECIFIED.
 - 2. ALL 110V WIRE TO BE CLAMPED WITH CLAMP 10497-05-000 WITHIN 200MM OF OUTLET BOXES, USE SCREW G67-10-12B.
 - 3. ALL GROUND WIRE TO BE COVERED WITH TUBING 8041-02-000.
 - 4. SEE WIRING DIAGRAM-BODY,110V FOR ADDITIONAL INFORMATION.
 - 5. WIRE PART OF WIRE ASM-110V.
 - 6. WIRE ROUTED THROUGH FLOOR AT THIS POINT.
 - 7. WIRE IN SIDEWALL
 - 8. NOT USED WITH 1D5
 - 9. FLEX CORD PART OF WIRE ASM-CHASSIS.
 - 10. WIRE CONNECTS TO INVERTER WITH 401
 - 11. LOCATE REFRIGERATOR RECEPTACLE ON TIEDOWN BRACKET.
 - 12. SEE LOAD CENTER/ATS ASM FOR ADDITIONAL INFORMATION.

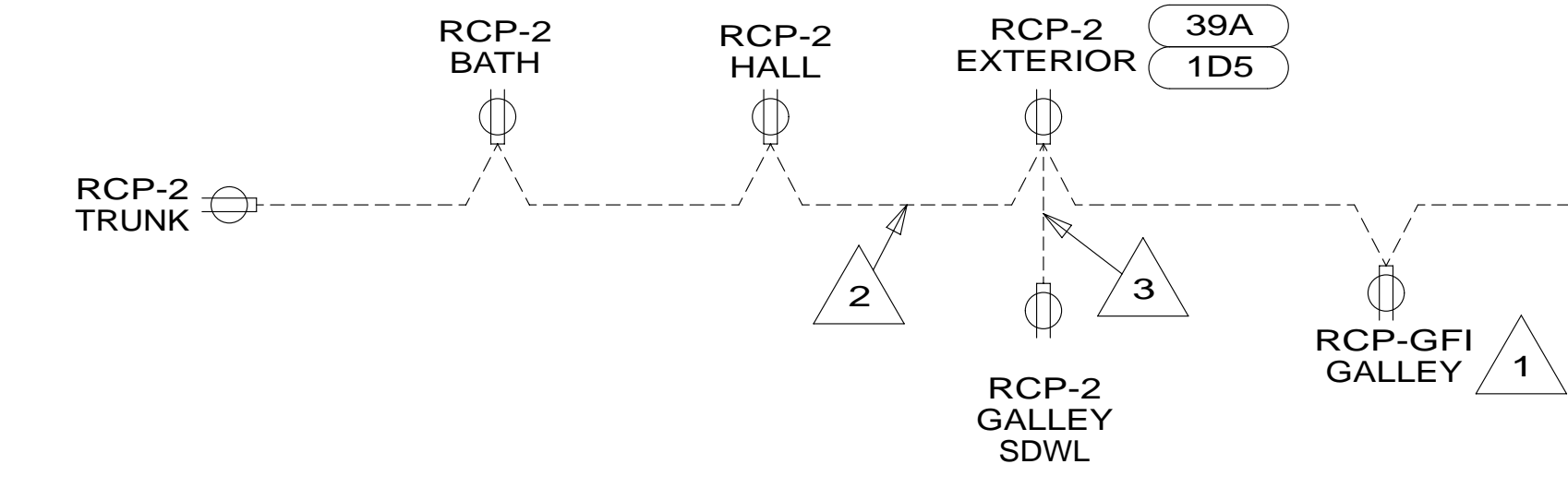
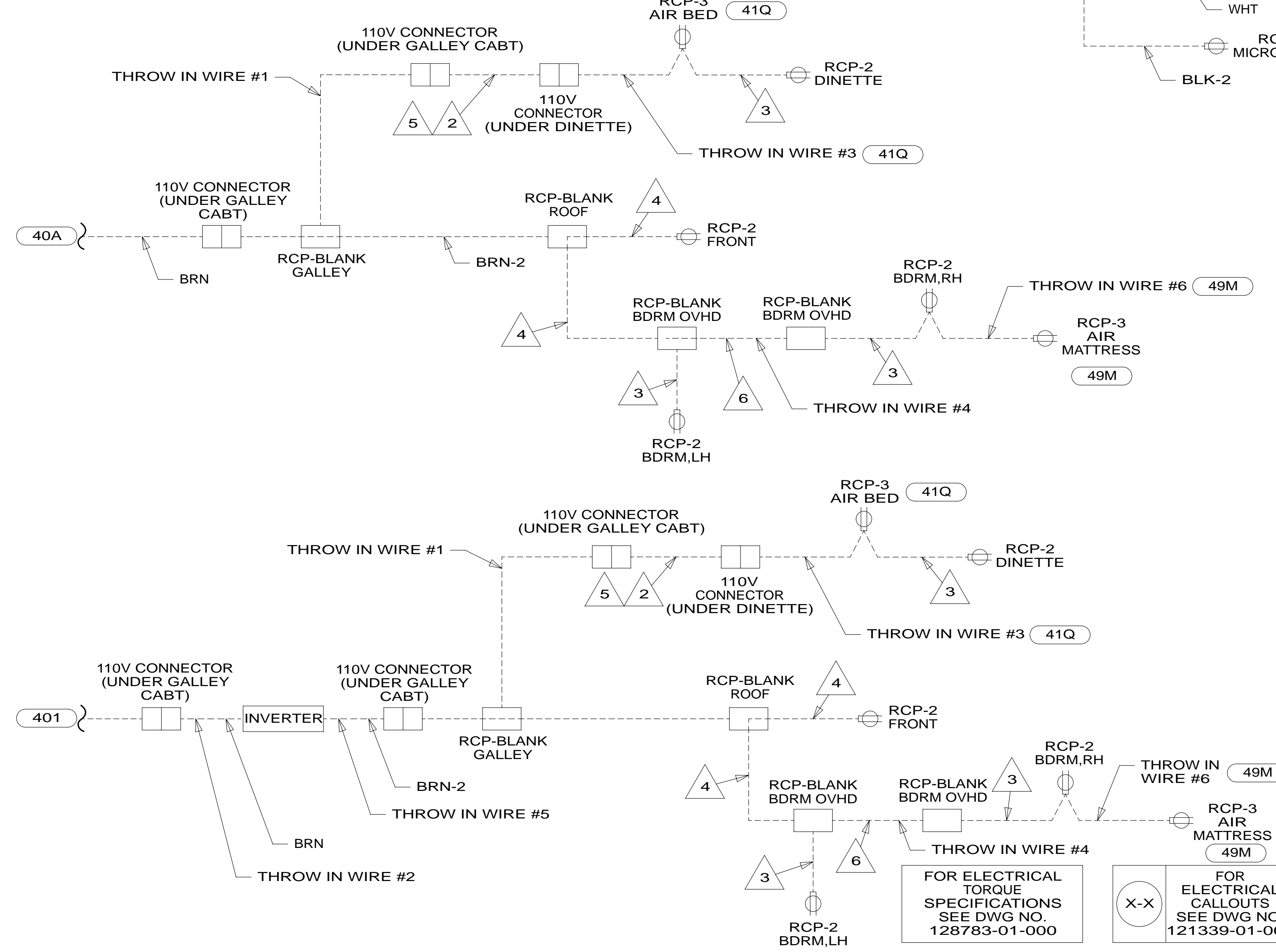
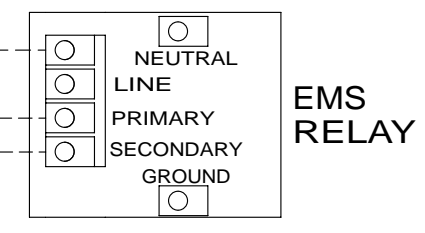
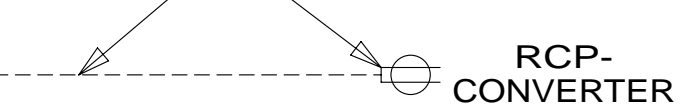
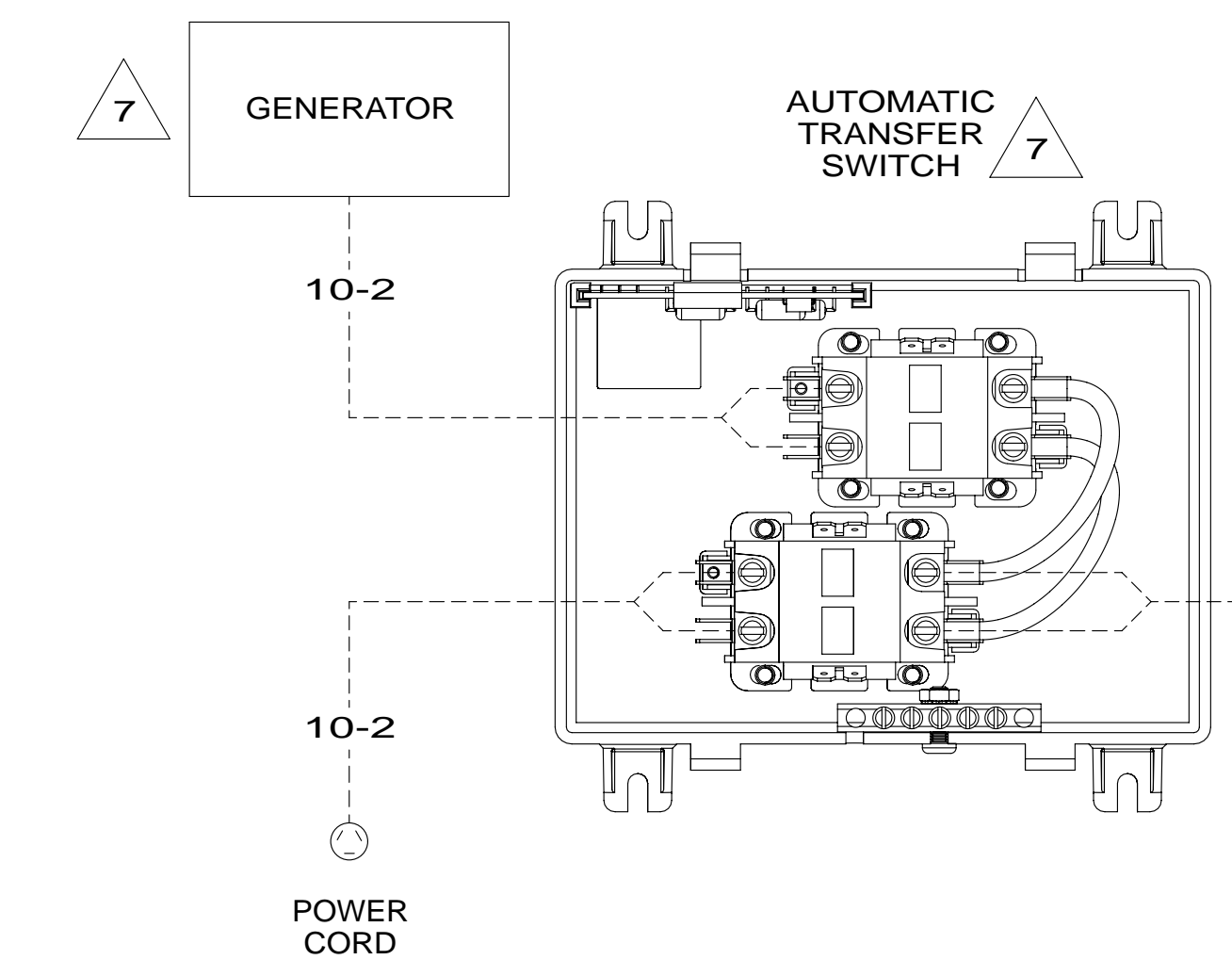
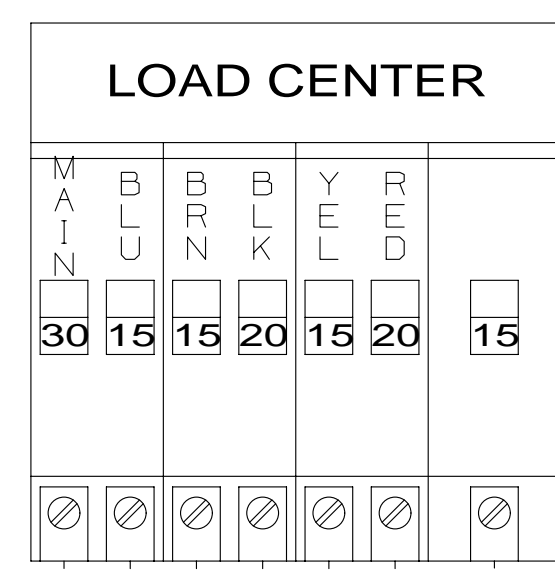
- 401 INVERTER-DC/AC, 1000 WATT
- 40A INVERTER-DC/AC WITHOUT
- 1D5 ENTERTAINMENT CENTR/EXT W/CD
- 12D ELECTRICAL SYSTEM 30 AMP
- 265 CODES/STANDARDS-CSA/CMVSS
- 1B1 CODES/STANDARDS USA

FOR ELECTRICAL TORQUE SPECIFICATIONS SEE DWG NO. 128783-01-000

FOR ELECTRICAL CALLOUTS SEE DWG NO. 121339-01-000

FIRST USED		14 727K	
DO NOT SCALE DRAWING			
TITLE: WIRING INSTL-BODY,110V			
SHEET 3	PART NO	184232	REV
		28-May-2014	

* 184232 * A



- NOTES:
- 8 WIRE AND RECEPTACLE SUPPLIED INTREGATED INTO LOAD CENTER DISTRIBUTION PANEL.
 - 7 SEE MANUFACTURERS DIAGRAM.
 - 6 WIRE ROUTED IN BEDROOM OVHD CABINET.
 - 5 FLEXIBLE CORD TO SLIDEOUT.
 - 4 WIRE ROUTED IN ROOF.
 - 3 WIRE ROUTED IN SIDEWALL.
 - 2 WIRE ROUTED THRU FLOOR.
 - 1 ALL WIRES DOWN STREAM AND INCLUDING THIS OUTLET ARE GROUND FAULT CIRCUIT INTERRUPT PROTECTED.

- 1BT WATER HEATER, TANKLESS
- 53B WTR HTR-6GAL ELECTRIC/LP GAS
- 49M AIR SLEEP SYSTEM-QUEEN SIZE
- 41Q SOFA/SLEEPER-ULTRALEATHER
- 40A INVERTER-DC/AC WITHOUT
- 401 INVERTER-DC/AC, 1000 WATT
- 39A EXT RECEPTACLE DPLX 120VAC
- 1D5 ENTERTAINMENT CENTR/EXT-DVD
- 12D ELECTRICAL SYSTEM 30 AMP
- 265 CODES/STANDARDS-CSA/CMVSS
- 1B1 CODES/STANDARDS USA

FOR ELECTRICAL TORQUE SPECIFICATIONS SEE DWG NO. 128783-01-000

FOR ELECTRICAL CALLOUTS SEE DWG NO. 121339-01-000

FIRST USED		14 727K	
DO NOT SCALE DRAWING			
TITLE: WIRING INSTL-BODY, 110V			
SHEET 4	PART NO	184232	REV
		1	28-May-2014

* 184232 * A