



**DANGER**

**Danger of electrical shock, burns or death.** Always remove all power sources before attempting any repair, service or diagnostic work. Power can be present from shore power, generator, inverter or battery. All power sources must be disabled and secured before performing any service.



**CAUTION**

If you lack the skills, tools or equipment to perform diagnostic or repair work leave such work to an authorized Winnebago Industries dealer or other qualified shop.

|  | R42QD/GD          | ITEM |
|--|-------------------|------|
| CABLE ASM (YEL) FROM COACH BATTERY FUSE TO STUD-JUMP START,RED                   | 175207-52-076     | 1    |
| CABLE ASM (YEL) FROM STUD-JUMP START,RED TO COACH SIDE OF AUX START SOLENOID     | 175207-52-004     | 2    |
| CABLE ASM (ORG) FROM COACH BATTERY TO INVERTER FUSE                              | 175207-66-003     | 3    |
| CABLE ASM (BLK) FROM STUD-JUMP START,BLK TO FRAME RAIL GROUND                    | 175211-01-006     | 4    |
| CABLE ASM (ORG) FROM INVERTER FUSE TO INVERTER DISCONNECT                        | 175207-67-024     | 5    |
| CABLE ASM (ORG) FROM INVERTER DISCONNECT TO INVERTER                             | 175207-65-004     | 17   |
| CABLE ASM (BLK) FROM BATTERY TO INVERTER   | 175211-01-027     | 6    |
| CABLE ASM (BLK) FROM COACH BATTERY TO FRAME RAIL GROUND                          | 175211-02-081     | 7    |
| CABLE ASM (PUR) FROM DISCONNECT SOLENOID TO ISOLATED STUD                        | 175207-15-004     | 8    |
| CABLE ASM (RED) FROM BATTERY SIDE OF DISCONNECT SOLENOID TO CHASSIS BATTERY FUSE | 175207-35-007     | 9    |
| CABLE ASM (BLU) FROM CHASSIS DISCONNECTED POWER FUSE TO LEVELING SYSTEM POWER    | 141416-26-129     | 10   |
| CABLE ASM (BLK) FROM LEVELING SYSTEM TO FRAME RAIL GROUND                        | 133567-11-005     | 1    |
| CABLE ASM (GRN) FROM BAT DISC RELAY TO PASS THRU STUD                            | 175207-42-138     | 11   |
| CABLE ASM (GRN) FROM PASS THRU STUD TO GENERATOR                                 | 175207-42-031     | 2    |
| CABLE ASM (BLK) FROM GENERATOR TO FRAME RAIL GROUND                              | 175211-02-022     | 2    |
| CABLE ASM (YEL) JUMPER BETWEEN POSITIVE POSTS ON COACH BATTERY                   | 141417-52-004     | 12   |
|  | 141417-51-002 (4) | 13   |
| CABLE ASM (BLK) JUMPER BETWEEN NEGATIVE POSTS ON COACH BATTERY                   | 133568-12-004     | 14   |
|  | 133568-11-002 (4) | 15   |
| CABLE ASM (RED) JUMPER BETWEEN POSITIVE POSTS IN LEFT FRONT COMPT                | 141417-32-002     | 3    |
| CABLE ASM-TEMPERATURE,BATTERY  | 175385-03-000     | 16   |
| CABLE ASM-CHASSIS BATTERY FUSE (RED)   | 175207-35-005     | 19   |
| CABLE ASM-COACH BATTERY FUSE (YEL)   | 175207-52-007     | 18   |

265 CODES/STANDARDS-CSA/CMVSS  
 1B1 CODES/STANDARDS USA

1B1 265



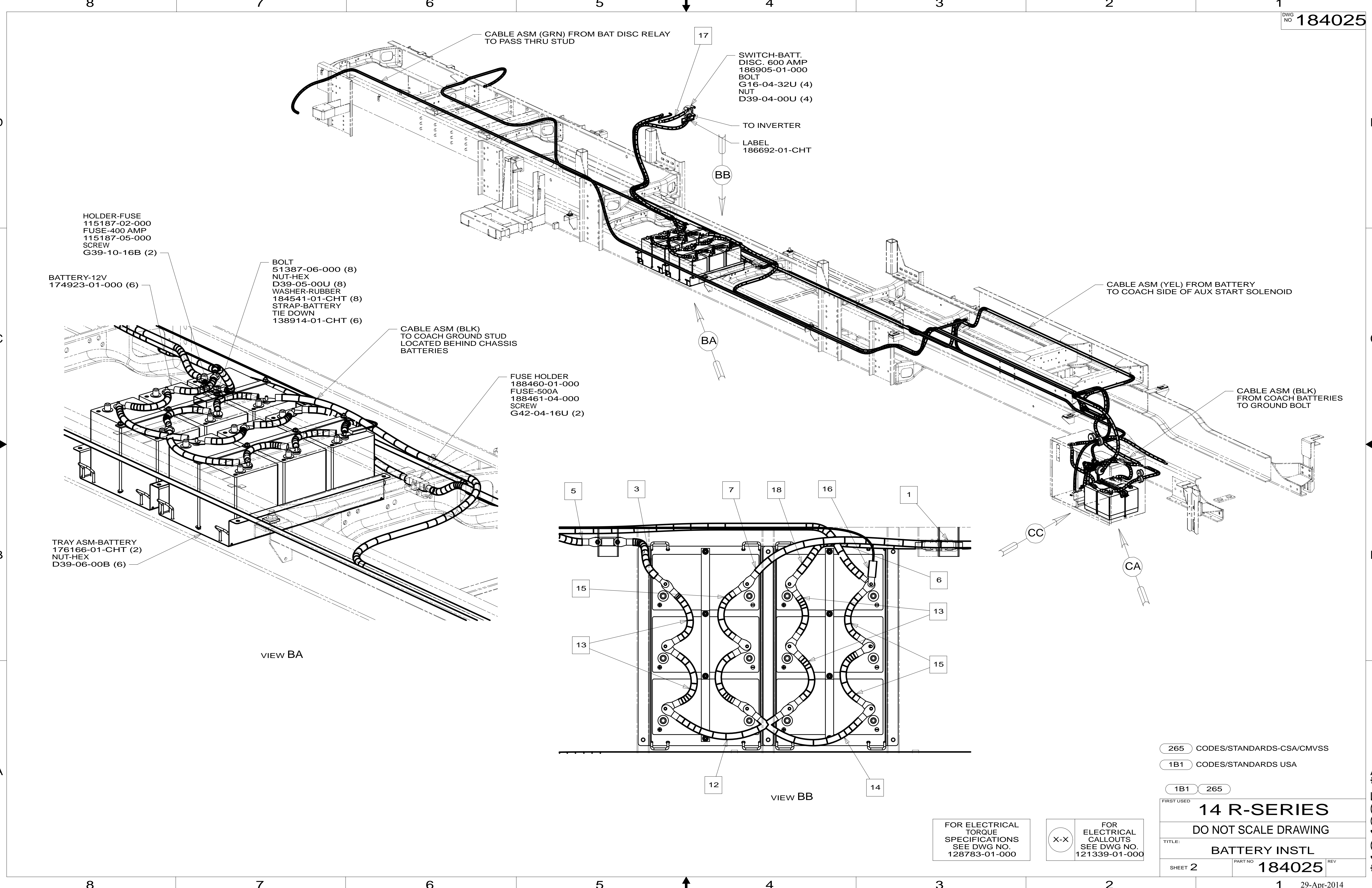
|                             |  |
|-----------------------------|--|
| DFTR                        | ORIG. DATE   |
| CHKR                        | ALL DIMENSIONS ARE IN MILLIMETERS                  |
| P.E.                        |  |
| M.E.                        | FIRST USED   |
| DSNR                        | 14 R-SERIES  |
| UNSPECIFIED TOLERANCES ARE: |  |
| WHOLE DIM (X)               | : 3  |
| ONE-PLACE (X.X)             | : 1.5  |
| TWO-PLACE (X.XX)            | : 0.50   |
| ANGLE                       | : 1°   |
| THIRD ANGLE PROJECTION      |  |
| DO NOT SCALE DRAWING        | REFER TO ES0018 FOR FASTENER TIGHTENING GUIDELINES |
| TITLE: BATTERY INSTL        |  |
| SHEET 1 OF 3                | PART NO 184025 REV                                 |
| REF:                        | 1 29-Apr-2014                                      |

FOR ELECTRICAL TORQUE SPECIFICATIONS SEE DWG NO. 128783-01-000

FOR ELECTRICAL CALLOUTS SEE DWG NO. 121339-01-000

NOTES:  
 3 SEE WIRING INSTL-FRONT END FOR ADDITIONAL INFORMATION.  
 2 SEE WIRING INSTL-CHASSIS FOR ADDITIONAL INFORMATION.  
 1 SEE LEVELING SYSTEM INSTL FOR ADDITIONAL INFORMATION.

\* 184025 \* A



CABLE ASM (GRN) FROM BAT DISC RELAY TO PASS THRU STUD

SWITCH-BATT. DISC. 600 AMP 186905-01-000 BOLT G16-04-32U (4) NUT D39-04-00U (4)

TO INVERTER LABEL 186692-01-CHT

HOLDER-FUSE 115187-02-000 FUSE-400 AMP 115187-05-000 SCREW G39-10-16B (2)

BATTERY-12V 174923-01-000 (6)

BOLT 51387-06-000 (8) NUT-HEX D39-05-00U (8) WASHER-RUBBER 184541-01-CHT (8) STRAP-BATTERY TIE DOWN 138914-01-CHT (6)

CABLE ASM (BLK) TO COACH GROUND STUD LOCATED BEHIND CHASSIS BATTERIES

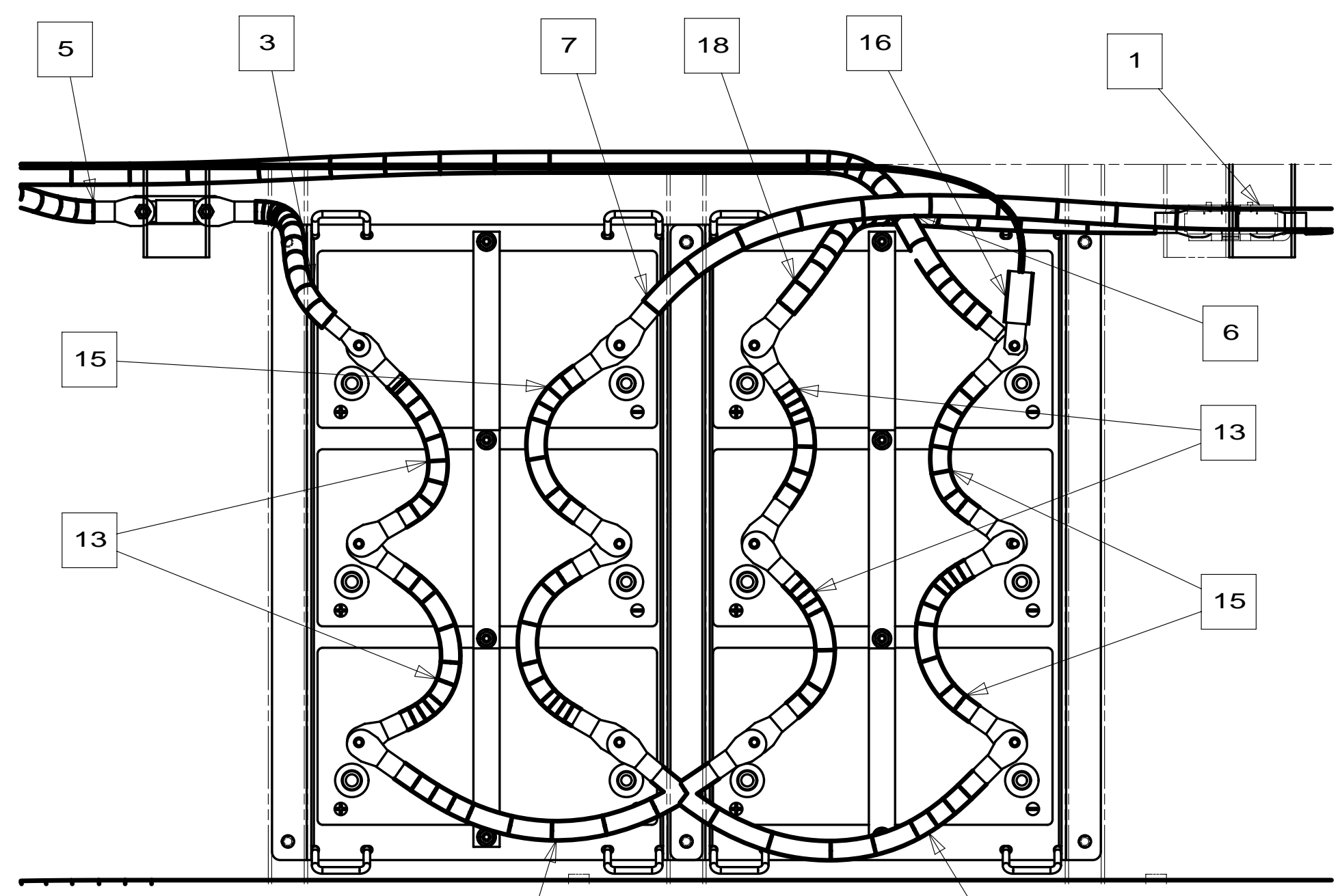
FUSE HOLDER 188460-01-000 FUSE-500A 188461-04-000 SCREW G42-04-16U (2)

CABLE ASM (YEL) FROM BATTERY TO COACH SIDE OF AUX START SOLENOID

CABLE ASM (BLK) FROM COACH BATTERIES TO GROUND BOLT

TRAY ASM-BATTERY 176166-01-CHT (2) NUT-HEX D39-06-00B (6)

VIEW BA



VIEW BB

265 CODES/STANDARDS-CSA/CMVSS

1B1 CODES/STANDARDS USA

1B1 265

FIRST USED 14 R-SERIES

DO NOT SCALE DRAWING

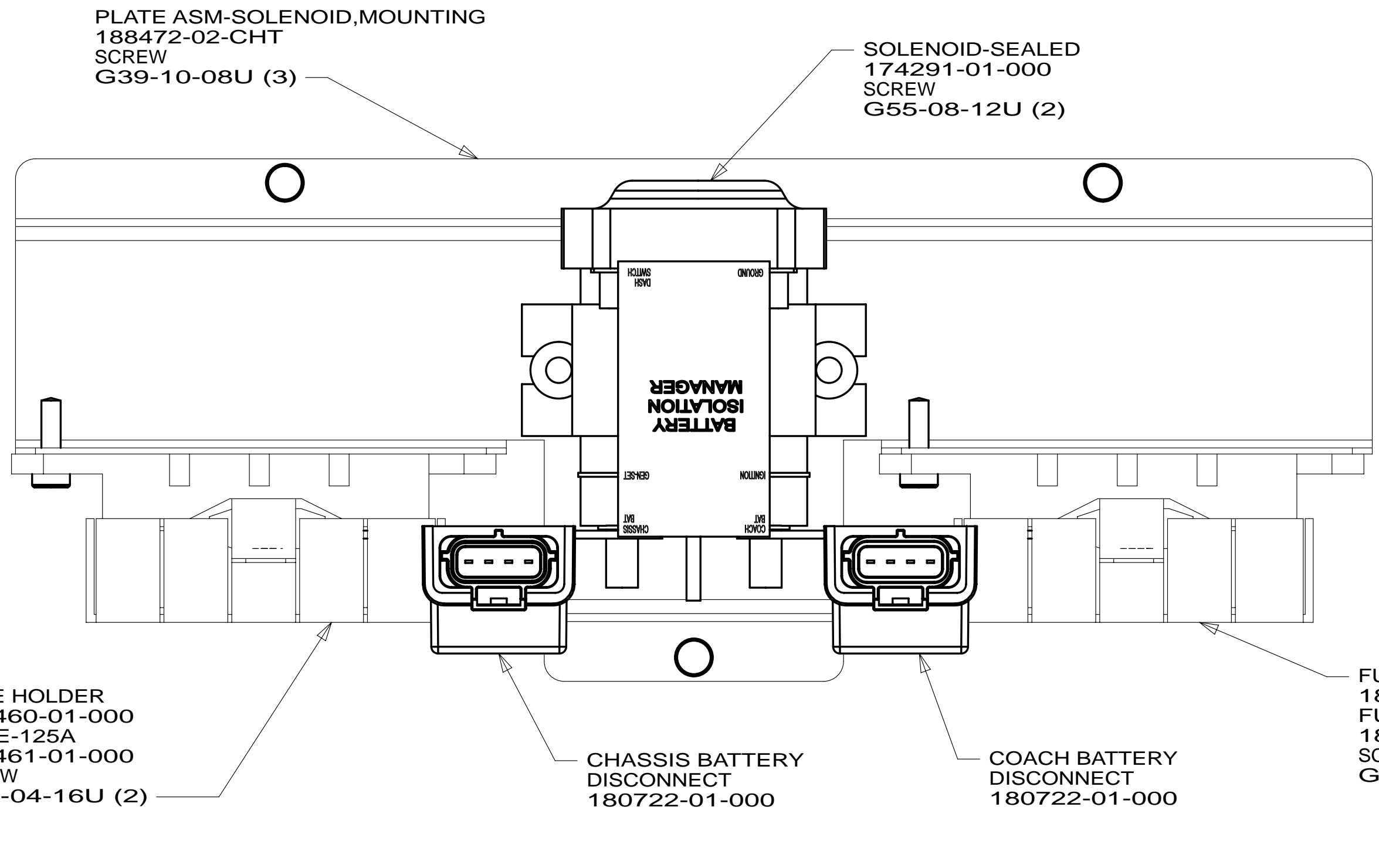
TITLE: BATTERY INSTL

SHEET 2 PART NO 184025 REV

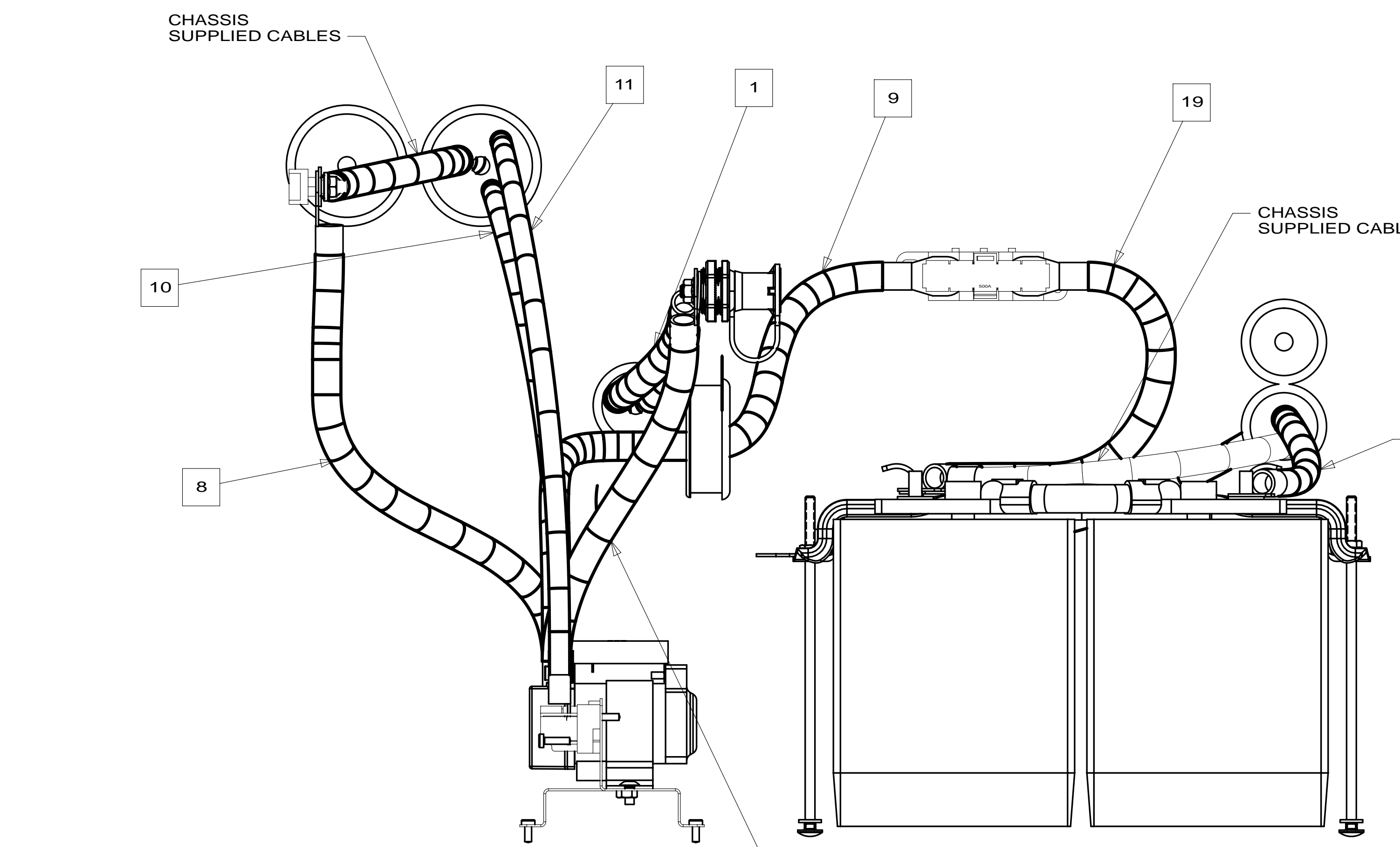
FOR ELECTRICAL TORQUE SPECIFICATIONS SEE DWG NO. 128783-01-000

FOR ELECTRICAL CALLOUTS SEE DWG NO. 121339-01-000

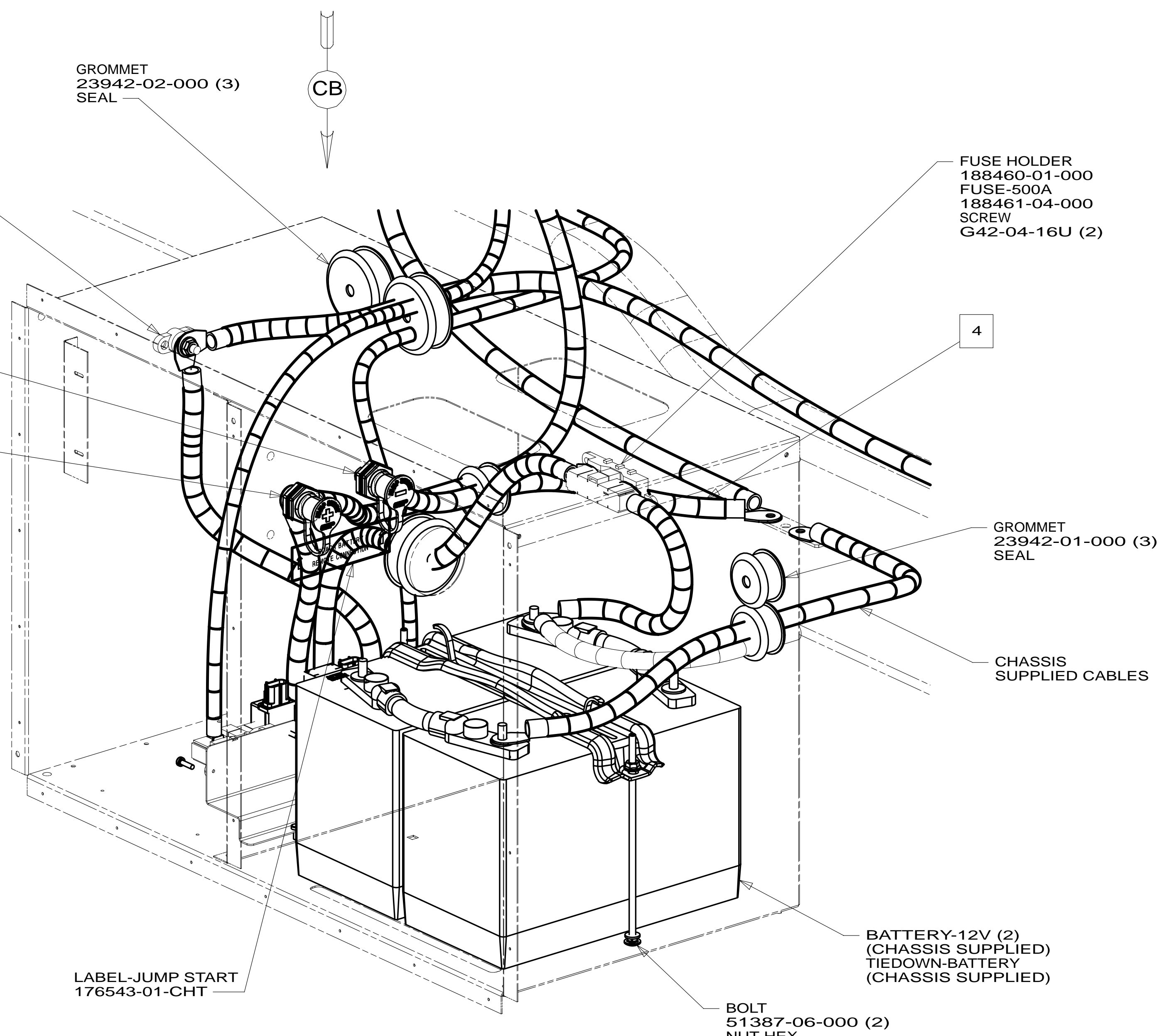
\* 184025 \* A



VIEW CB



VIEW CC



VIEW CA

- 15L REFR/FRZR 2DOOR RESIDENTIAL
- 265 CODES/STANDARDS-CSA/CMVSS
- 1B1 CODES/STANDARDS USA

|                             |                           |
|-----------------------------|---------------------------|
| 1B1                         | 265                       |
| FIRST USED                  |                           |
| <b>14 R-SERIES</b>          |                           |
| DO NOT SCALE DRAWING        |                           |
| TITLE: <b>BATTERY INSTL</b> |                           |
| SHEET 3                     | PART NO <b>184025</b> REV |

FOR ELECTRICAL TORQUE SPECIFICATIONS SEE DWG NO. 128783-01-000

FOR ELECTRICAL CALLOUTS SEE DWG NO. 121339-01-000

\* 184025 \*