



**DANGER**

**Danger of electrical shock, burns or death.** Always remove all power sources before attempting any repair, service or diagnostic work. Power can be present from shore power, generator, inverter or battery. All power sources must be disabled and secured before performing any service.



**CAUTION**

If you lack the skills, tools or equipment to perform diagnostic or repair work leave such work to an authorized Winnebago Industries dealer or other qualified shop.

DRAWING NO.	MODEL	SHEETS
183838-01	331K/P	1,2,3,4
183838-02	325B	1,2,5,6
183838-03	322R	1,2,5,6
183838-04	331H/P	1,6,7,8
183838-05	327Q/P	1,9,10,11

		331K/P	325B	322R	331H/P	327Q/P
RED	1B1	136135-07-054	136135-07-045	136135-07-057	136135-07-038	136135-07-058
	265	136136-07-054	136136-07-045	136136-07-057	136136-07-038	136136-07-058
YEL	1B1	136131-05-042	136131-05-023	136131-05-027	136131-05-018	136131-05-040
	265	136134-05-042	136134-05-023	136134-05-027	136134-05-018	136134-05-040
BLK	1B1	136135-06-060	136135-06-045	136135-06-057	136135-06-030	136135-06-064
	265	136136-06-060	136136-06-045	136136-06-057	136136-06-030	136136-06-064
BRN	1B1	136131-03-117	136131-03-050	136131-03-057	136131-03-075	136131-03-072
	265	136134-03-117	136134-03-050	136134-03-057	136134-03-075	136134-03-072
BLU	1B1	136131-02-130	136131-02-055	136131-02-052	136131-02-092	136131-02-080
	265	136134-02-130	136134-02-055	136134-02-052	136134-02-092	136134-02-080
THROW IN WIRE #1	1B1	136131-02-057	136131-02-035	136131-02-098	136131-02-038	136131-02-053
	265	136134-02-057	136134-02-035	136134-02-098	136134-02-038	136134-02-053
THROW IN WIRE #2	1B1	136131-03-062	136131-02-035	136131-03-027	136131-03-006 <sup>4</sup>	136131-03-095
	265	136134-03-062	136134-02-035	136134-03-027	136134-03-006 <sup>4</sup>	136134-03-095
THROW IN WIRE #3	1B1	136131-03-015 <sup>5</sup>	136131-02-042	136131-03-035 <sup>6</sup>	136131-03-055	
	265	136134-03-015 <sup>5</sup>	136134-02-042	136134-03-035 <sup>6</sup>	136134-03-055	
THROW IN WIRE #4	1B1	136131-03-003 <sup>4</sup>	136131-03-027	136131-03-015 <sup>7</sup>	136131-03-026 <sup>4</sup>	136131-03-003 <sup>4</sup>
	265	136134-03-003 <sup>4</sup>	136134-03-027	136134-03-015 <sup>7</sup>	136134-03-026 <sup>4</sup>	136134-03-003 <sup>4</sup>
THROW IN WIRE #5	1B1	136131-03-004 <sup>4</sup>	136131-03-037			136131-03-006 <sup>4</sup>
	265	136134-03-004 <sup>4</sup>	136134-03-037			136134-03-006 <sup>4</sup>
MAIN EXTENSION CABLE ASM	1B1	164957-13-050	164957-13-042	164957-15-044	164957-11-026	164957-15-031
	265	164957-14-050	164957-14-042	164957-16-044	164957-12-026	164957-16-031
GROUND MAIN		136145-02-018	136145-06-033	136145-06-016	136145-02-012	136145-06-017
MAIN	1B1				136137-01-026	
	265				136138-01-026	
GENERATOR CABLE ASM	1B1					164957-13-067
	265					164957-14-067

- <sup>077</sup> CONVEN & APPEAR PK-CHAMPAGNE
- <sup>644</sup> GREAT ALASKAN RENTAL PACKAGE
- <sup>68C</sup> TV-39" COLOR,STEREO W/REMOTE
- <sup>42K</sup> TV-32" COLOR,STEREO W/REMOTE
- <sup>088</sup> CONVENIENCE & APPEAR PK-TAUP
- <sup>083</sup> CONVENIENCE & APPEARANCE PKG
- <sup>265</sup> CODES/STANDARDS-CSA/CMVSS
- <sup>1B1</sup> CODES/STANDARDS USA

**WINNEBAGO** COPYRIGHT 2014 WINNEBAGO INDUSTRIES, INC.

DFTR	ORIG. DATE
CHKR	ALL DIMENSIONS ARE IN MILLIMETERS
P.E.	
M.E.	FIRST USED
DSNR	14 300-SERIES

UNSPECIFIED TOLERANCES ARE:  
 WHOLE DIM (X) : 3  
 ONE-PLACE (X.X) : 1.5  
 TWO-PLACE (X.XX) : 0.50  
 ANGLE : 1°

THIRD ANGLE PROJECTION

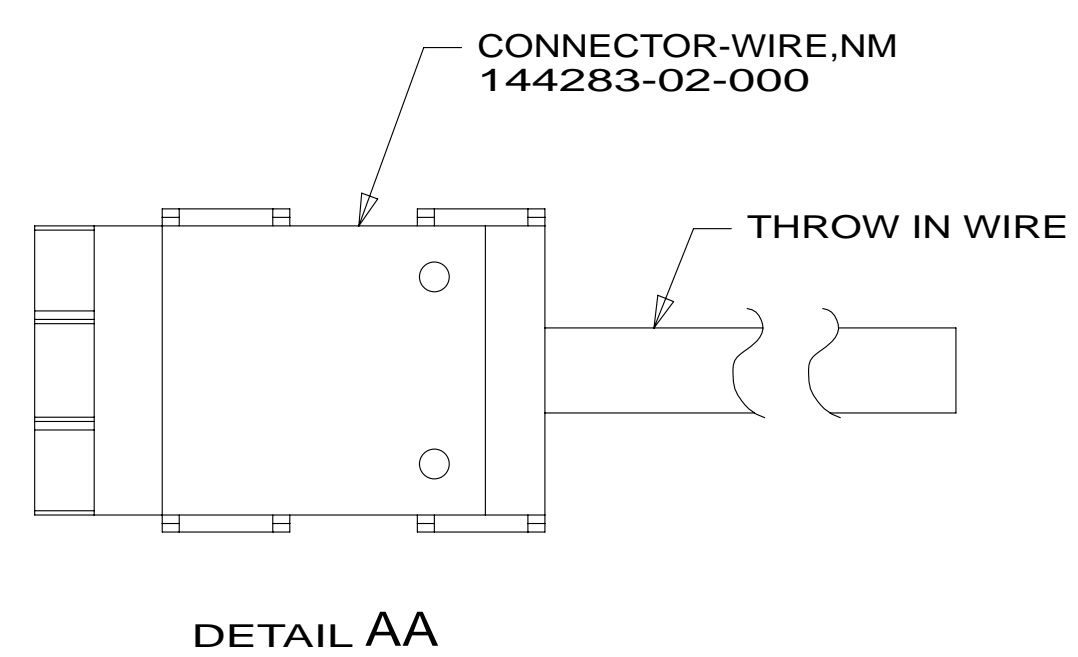
DO NOT SCALE DRAWING REFER TO ES0018 FOR FASTENER TIGHTENING GUIDELINES

TITLE: **LOAD CENTER/ATS ASM**

SHEET 1 OF 11 PART NO 183838 REV

REF: 1 08-Jul-2014

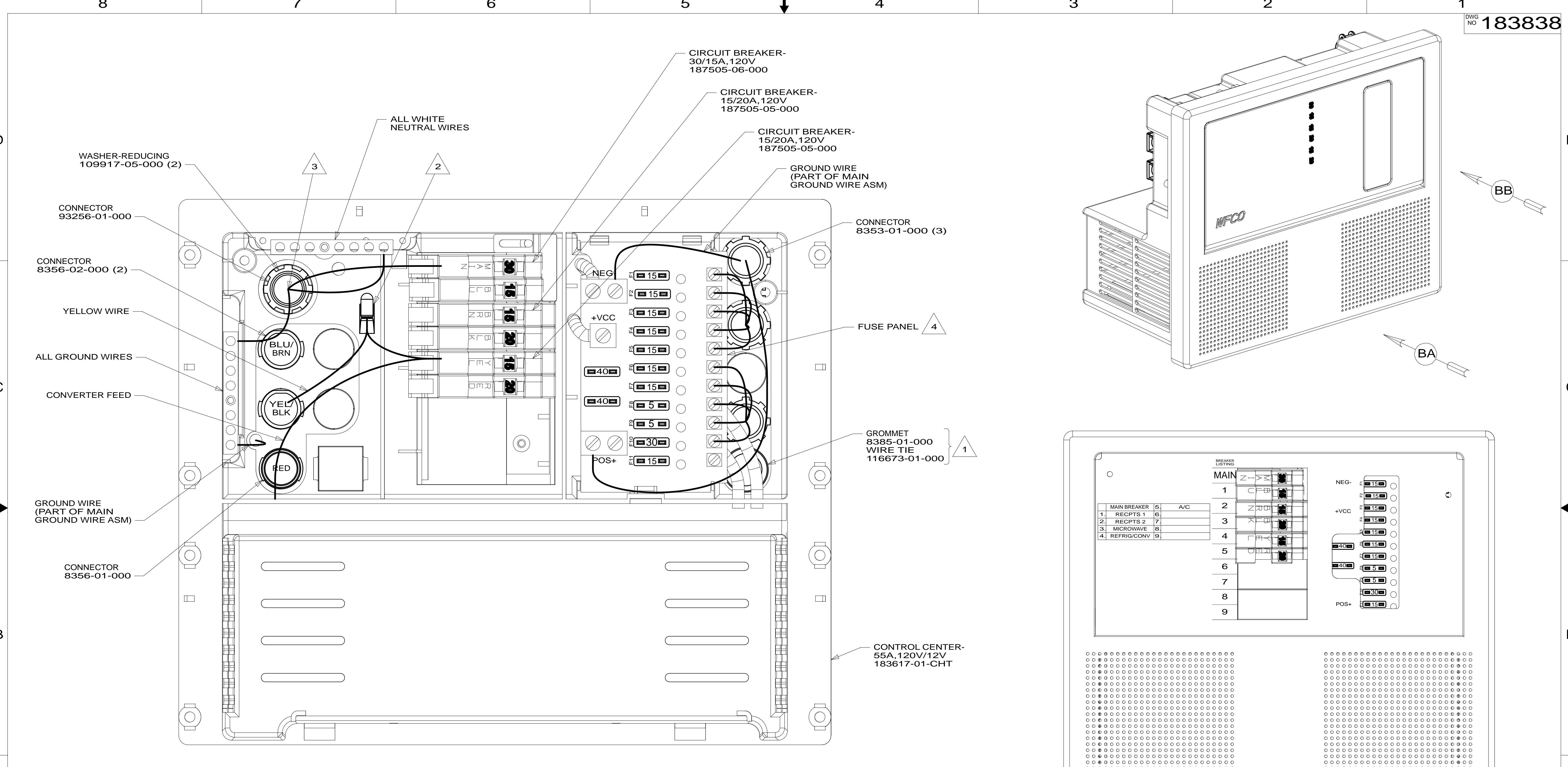
- <sup>7</sup> USED WITH <sup>644</sup>
- <sup>6</sup> NOT USED WITH <sup>644</sup>
- <sup>5</sup> USED WITH <sup>42K</sup> OR <sup>683</sup> OR <sup>088</sup> OR <sup>68C</sup> OR <sup>077</sup>
- <sup>4</sup> SEE DETAIL AA FOR CONNECTOR INSTALLATION.
3. SEE WIRING INSTL-BODY,12V FOR ADDITIONAL INFORMATION.
2. SECURE WIRES TO BACKSIDE OF LOAD CENTER WITH WIRE TIE 116673-01-000.
1. ALL GROUND WIRES TO BE COVERED WITH TUBING 8041-02-000.
- NOTES:



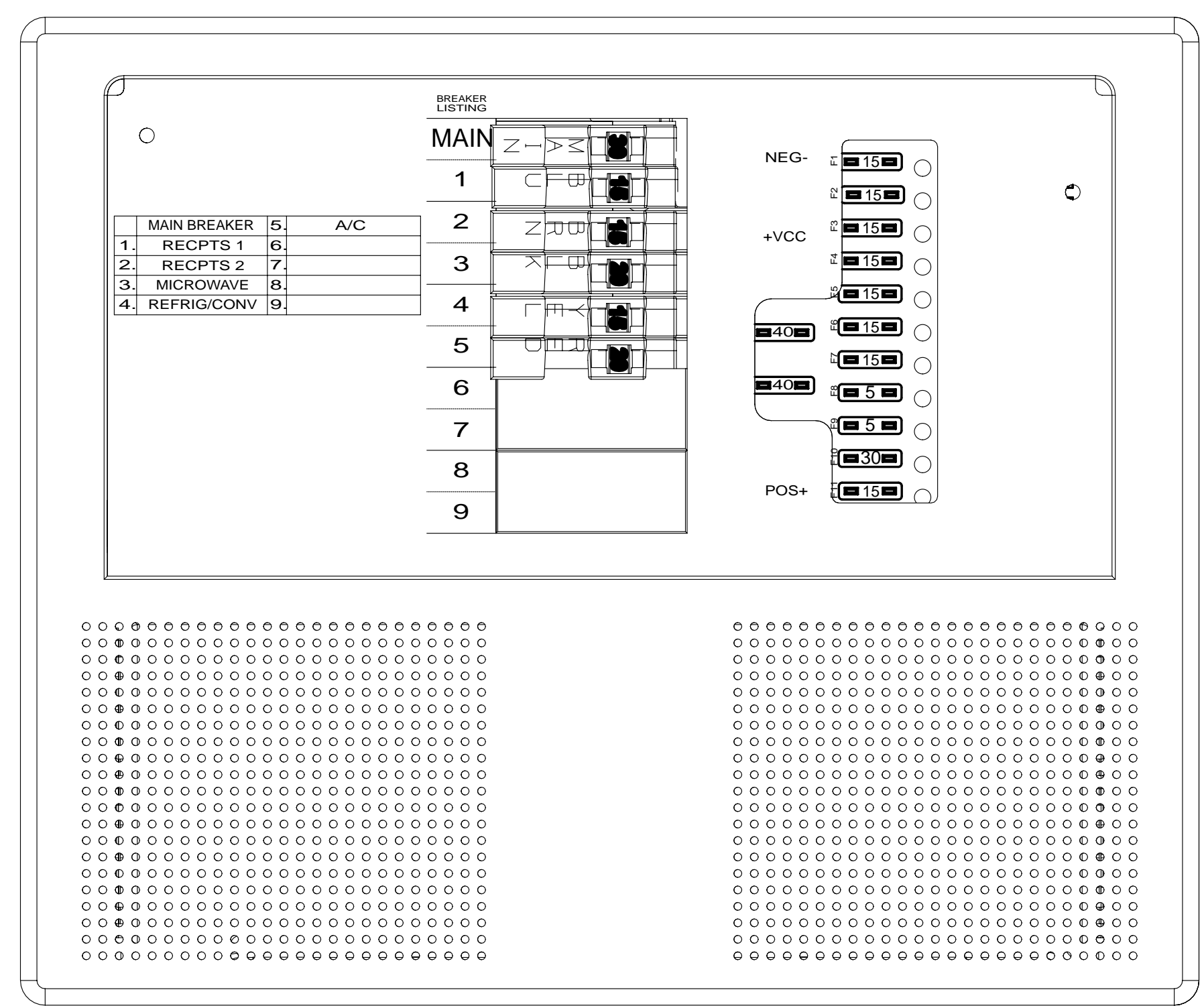
FOR ELECTRICAL TORQUE SPECIFICATIONS SEE DWG NO. 128783-01-000

FOR ELECTRICAL CALLOUTS SEE DWG NO. 121339-01-000

\* 183838 \*



VIEW BA  
(COVER REMOVED)



VIEW BB  
(DOOR REMOVED)

- NOTES:
- 4 SEE TAB BLOCK FOR MODEL SPECIFIC SHEETS.
  - 3 110V MAIN TO BE INSTALLED ON LINE.
  - 2 CONNECT CONVERTER POWER CIRCUIT INTO YELLOW BREAKER USE SUPPLIED WIRE NUT TO CONNECT TO YELLOW CIRCUIT WIRE.
  - 1 INSERT GROMMET FROM THE INSIDE OF CONTROL CENTER. SECURE 110V WIRES TO BACKSIDE OF CONTROL CENTER WITH WIRE TIE.

FOR ELECTRICAL TORQUE SPECIFICATIONS SEE DWG NO. 128783-01-000

FOR ELECTRICAL CALLOUTS SEE DWG NO. 121339-01-000

265 CODES/STANDARDS-CSA/CMVSS  
1B1 CODES/STANDARDS USA  
1B1 265

FIRST USED  
**14 300-SERIES**  
DO NOT SCALE DRAWING  
TITLE: **LOAD CENTER/ATS ASM**  
SHEET 2 PART NO **183838** REV

\* 183838 A

8 7 6 5 4 3 2 1

D

D

C

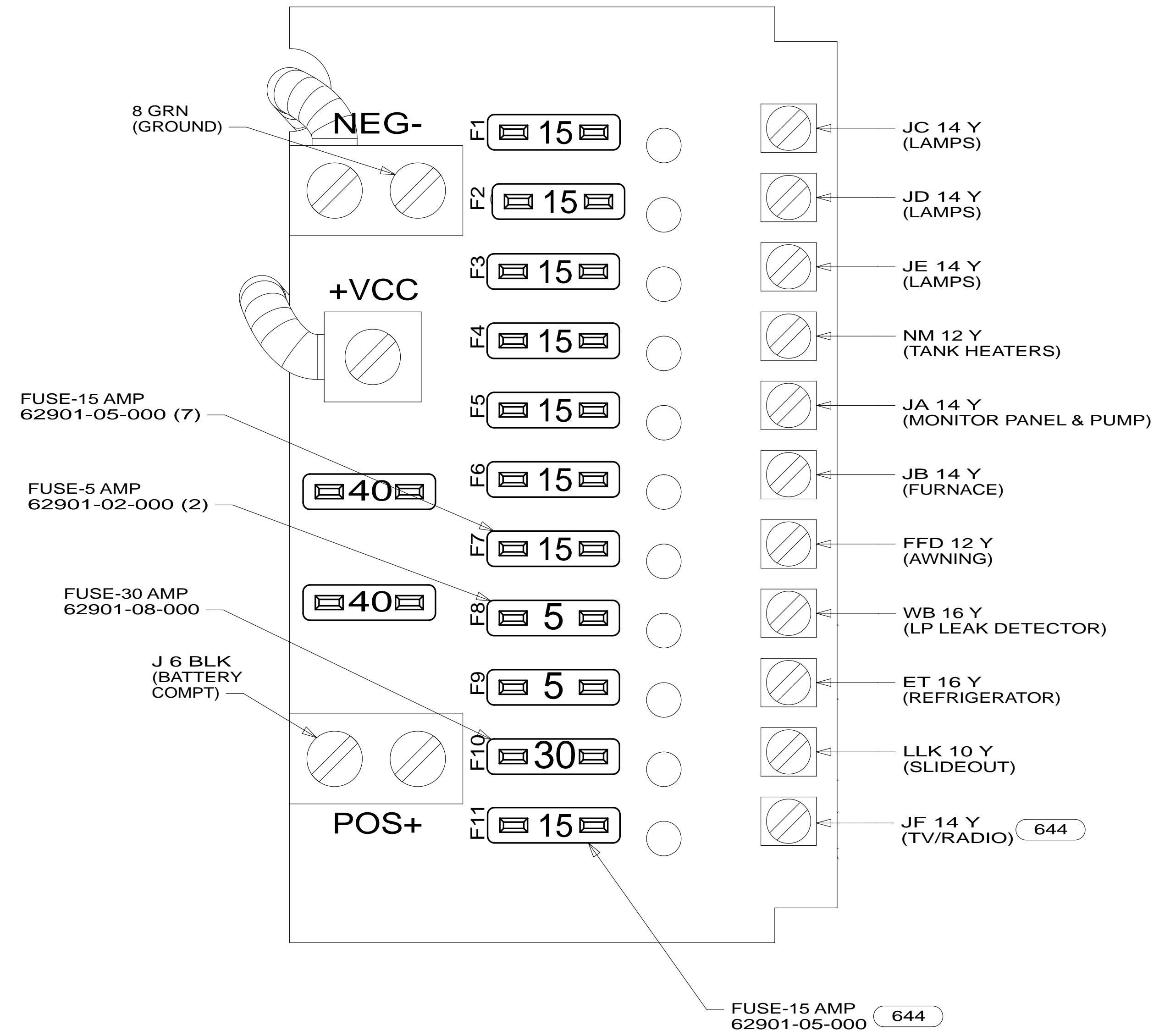
C

B

B

A

A



- 644 GREAT ALASKAN RENTAL PACKAGE
- 265 CODES/STANDARDS-CSA/CMVSS
- 1B1 CODES/STANDARDS USA

1B1 265

FIRST USED  
**14 300-SERIES**

DO NOT SCALE DRAWING

TITLE:  
**LOAD CENTER/ATS ASM**

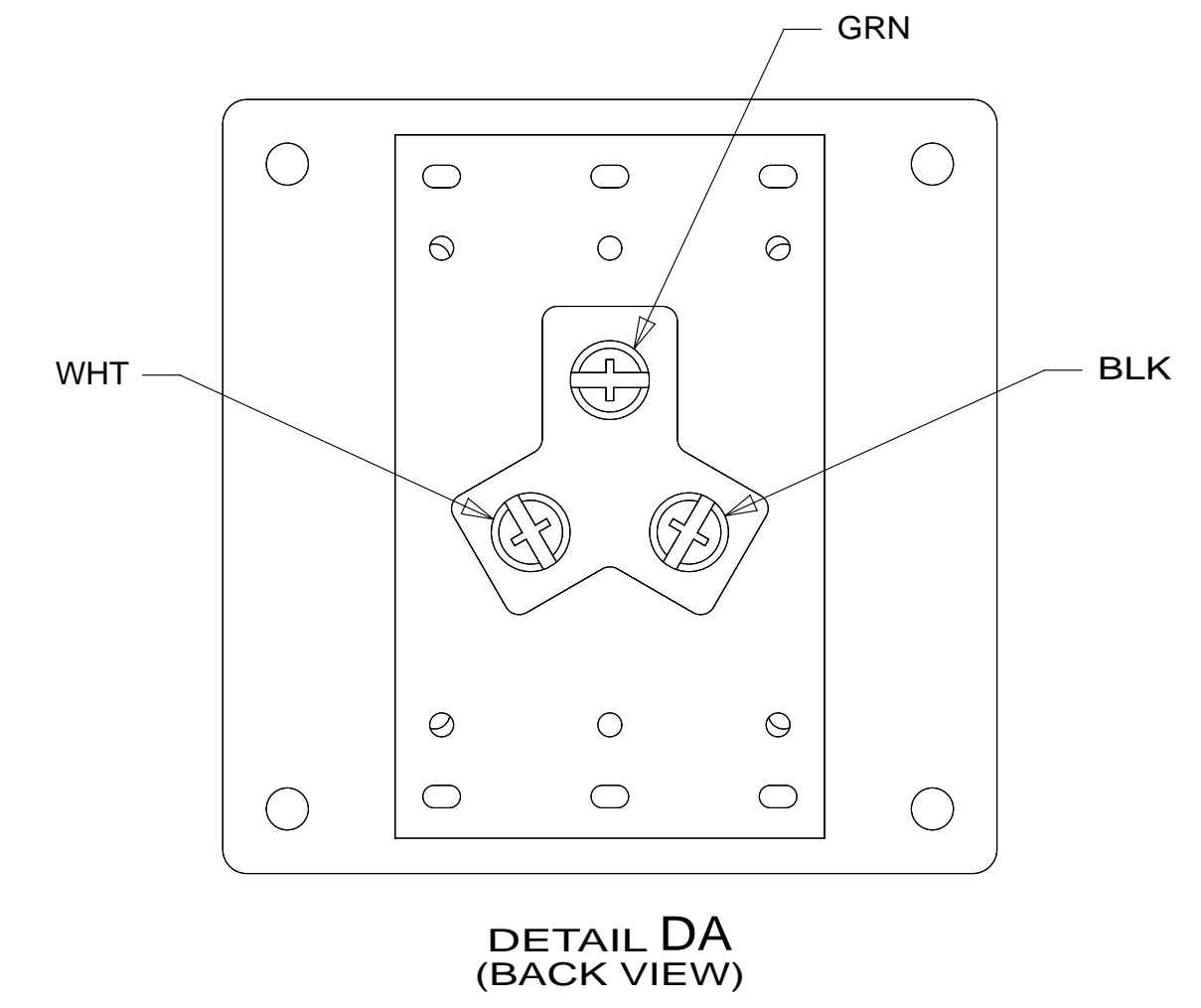
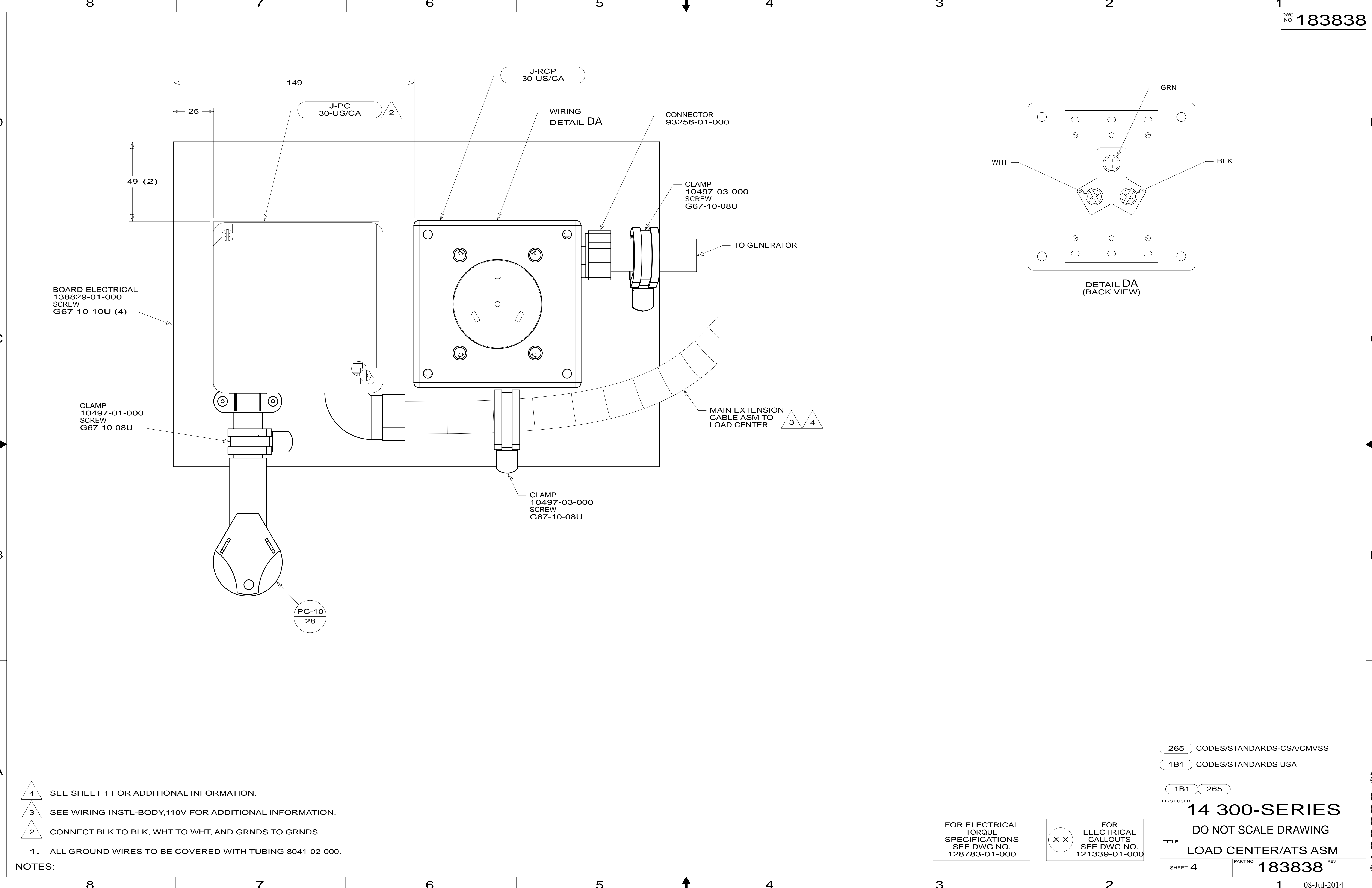
SHEET 3 PART NO **183838** REV

FOR ELECTRICAL TORQUE SPECIFICATIONS SEE DWG NO. 128783-01-000

FOR ELECTRICAL CALLOUTS SEE DWG NO. 121339-01-000

8 7 6 5 4 3 2 1

\* 183838



- NOTES:
- 4 SEE SHEET 1 FOR ADDITIONAL INFORMATION.
  - 3 SEE WIRING INSTL-BODY,110V FOR ADDITIONAL INFORMATION.
  - 2 CONNECT BLK TO BLK, WHT TO WHT, AND GRNDS TO GRNDS.
1. ALL GROUND WIRES TO BE COVERED WITH TUBING 8041-02-000.

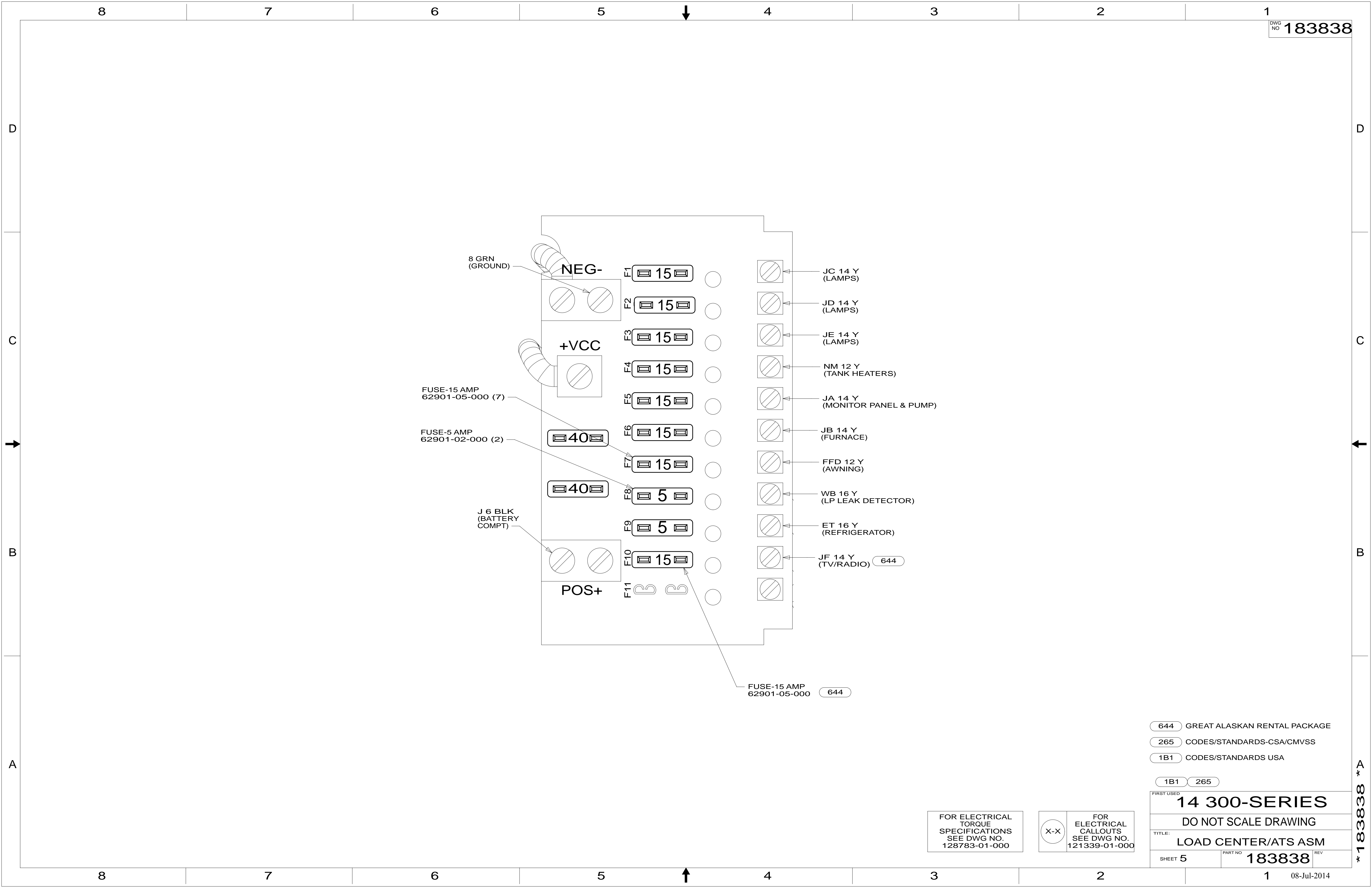
265 CODES/STANDARDS-CSA/CMVSS  
 1B1 CODES/STANDARDS USA

1B1 265	
FIRST USED	
<b>14 300-SERIES</b>	
DO NOT SCALE DRAWING	
TITLE: <b>LOAD CENTER/ATS ASM</b>	
SHEET 4	PART NO <b>183838</b> REV

FOR ELECTRICAL TORQUE SPECIFICATIONS SEE DWG NO. 128783-01-000

FOR ELECTRICAL CALLOUTS SEE DWG NO. 121339-01-000

\* 183838 \* A



- 644 GREAT ALASKAN RENTAL PACKAGE
- 265 CODES/STANDARDS-CSA/CMVSS
- 1B1 CODES/STANDARDS USA

1B1 265

**14 300-SERIES**

DO NOT SCALE DRAWING

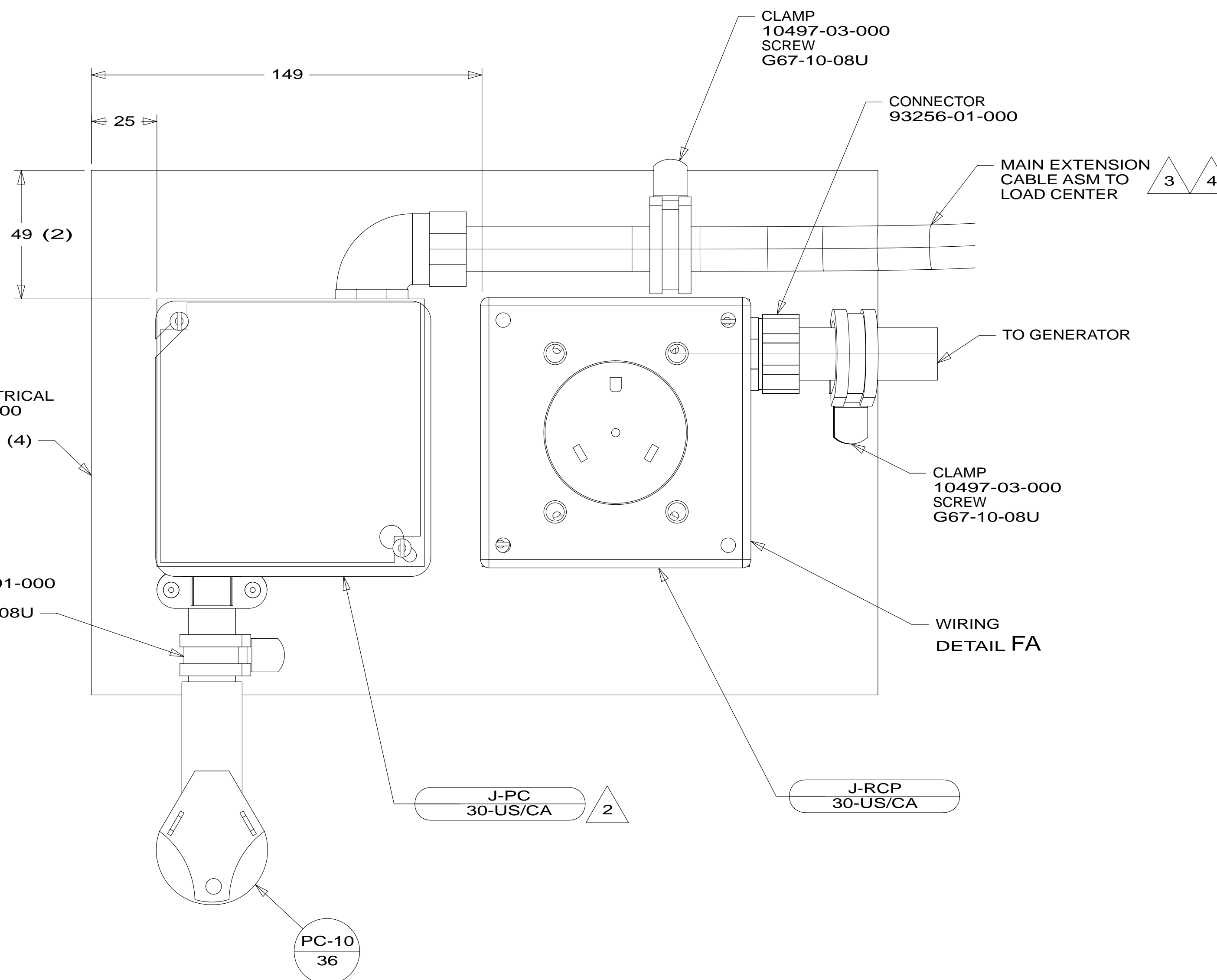
TITLE: **LOAD CENTER/ATS ASM**

SHEET 5 PART NO **183838** REV

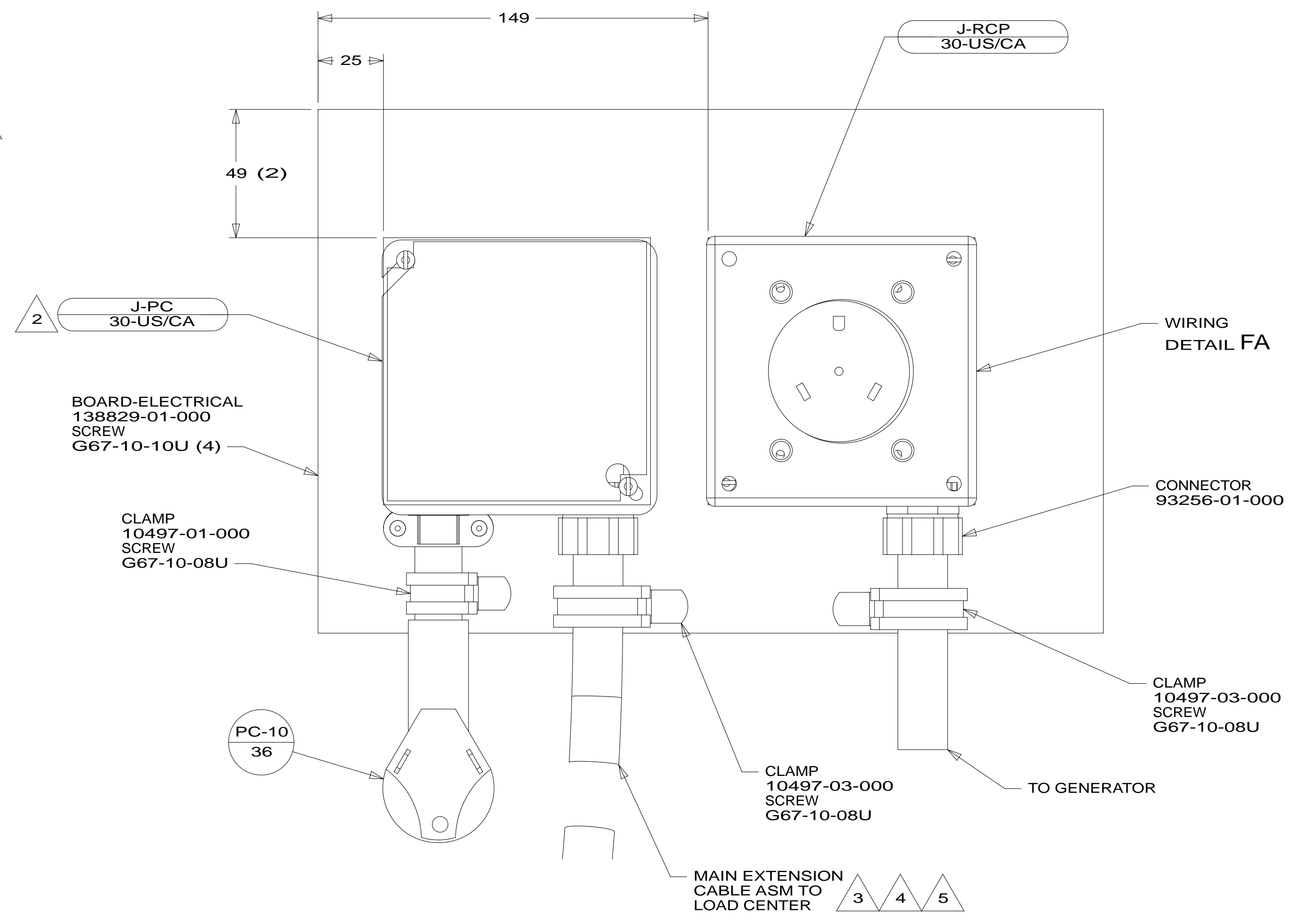
FOR ELECTRICAL TORQUE SPECIFICATIONS SEE DWG NO. 128783-01-000

FOR ELECTRICAL CALLOUTS SEE DWG NO. 121339-01-000

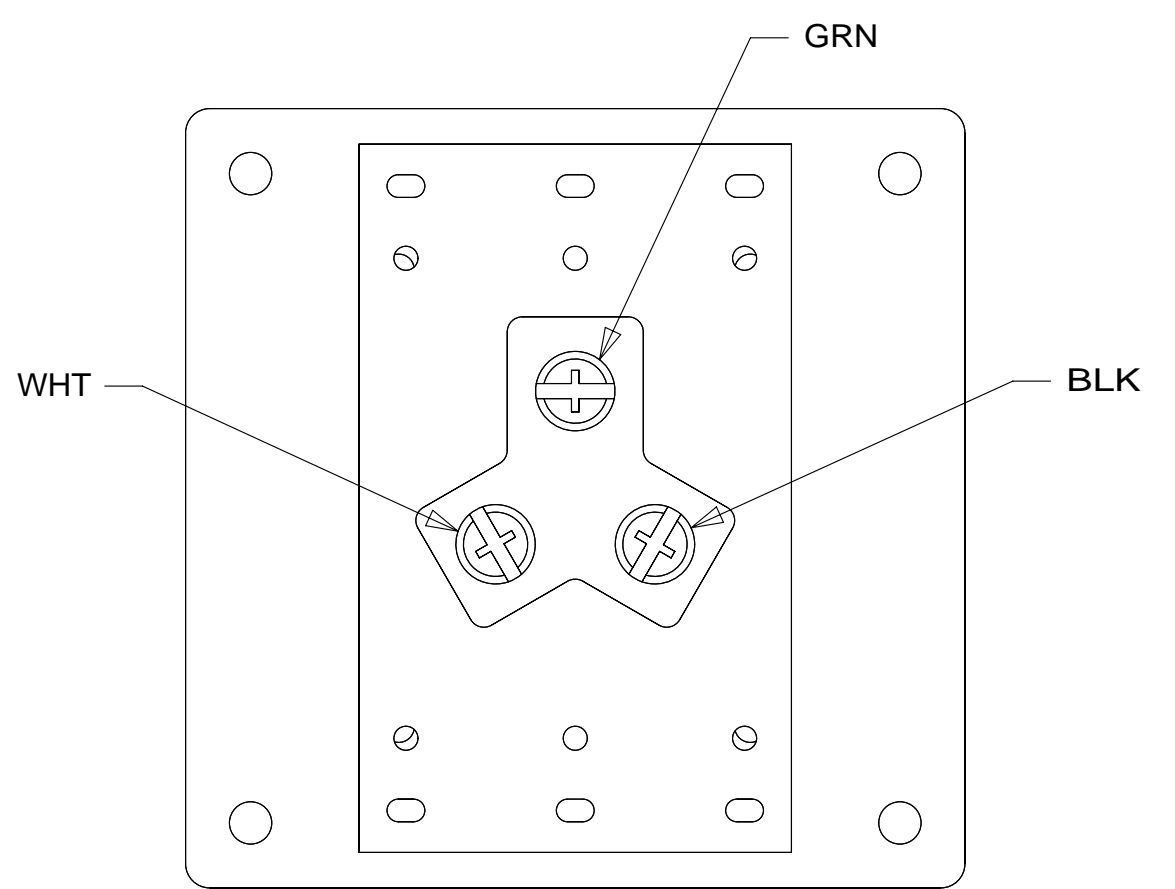
\* 183838 A



325B & 331H/P



322R



DETAIL FA (BACK VIEW)

- 5 MAIN EXTENSION CABLE ASM TO BE INSTALLED ON LINE.
- 4 SEE SHEET 1 FOR ADDITIONAL INFORMATION.
- 3 SEE WIRING INSTL-BODY,110V FOR ADDITIONAL INFORMATION.
- 2 CONNECT BLK TO BLK, WHT TO WHT, AND GRNDS TO GRNDS.

1. ALL GROUND WIRES TO BE COVERED WITH TUBING 8041-02-000.

NOTES:

265 CODES/STANDARDS-CSA/CMVSS

1B1 CODES/STANDARDS USA

1B1 265

FIRST USED  
**14 300-SERIES**

DO NOT SCALE DRAWING

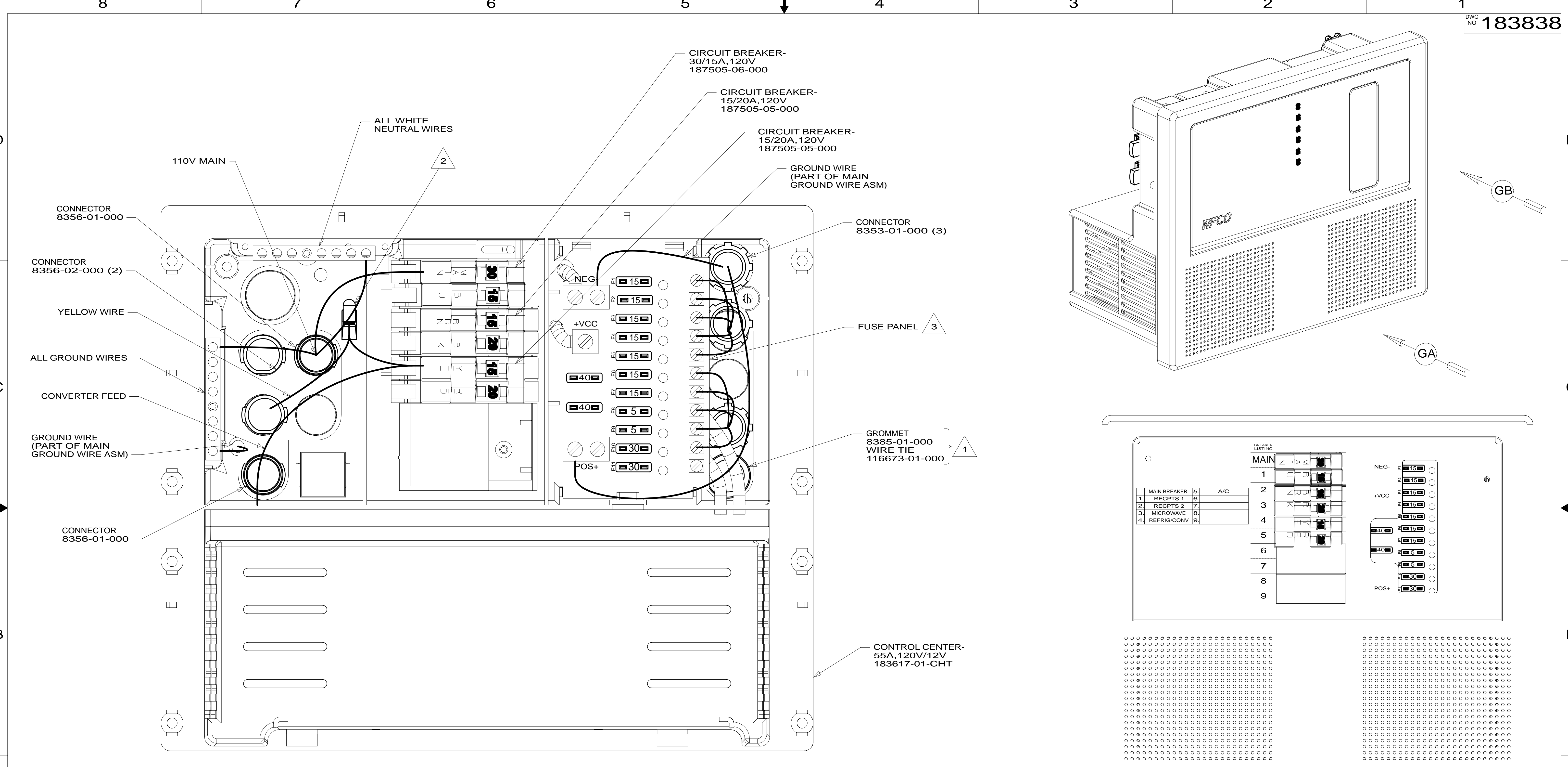
TITLE:  
**LOAD CENTER/ATS ASM**

SHEET 6 PART NO **183838** REV

FOR ELECTRICAL TORQUE SPECIFICATIONS SEE DWG NO. 128783-01-000

FOR ELECTRICAL CALLOUTS SEE DWG NO. 121339-01-000

\* 183838 \*



VIEW GA  
(COVER REMOVED)

VIEW GB  
(DOOR REMOVED)

- NOTES:
- 3 SEE TAB BLOCK FOR MODEL SPECIFIC SHEETS.
  - 2 CONNECT CONVERTER POWER CIRCUIT INTO YELLOW BREAKER USE SUPPLIED WIRE NUT TO CONNECT TO YELLOW CIRCUIT WIRE.
  - 1 INSERT GROMMET FROM THE INSIDE OF CONTROL CENTER. SECURE 110V WIRES TO BACKSIDE OF CONTROL CENTER WITH WIRE TIE.

FOR ELECTRICAL TORQUE SPECIFICATIONS SEE DWG NO. 128783-01-000

FOR ELECTRICAL CALLOUTS SEE DWG NO. 121339-01-000

265 CODES/STANDARDS-CSA/CMVSS  
1B1 CODES/STANDARDS USA  
1B1 265

FIRST USED  
**14 300-SERIES**  
DO NOT SCALE DRAWING  
TITLE: **LOAD CENTER/ATS ASM**  
SHEET 7 PART NO **183838** REV

\* 183838



8

7

6

5

4

3

2

1

D

D

C

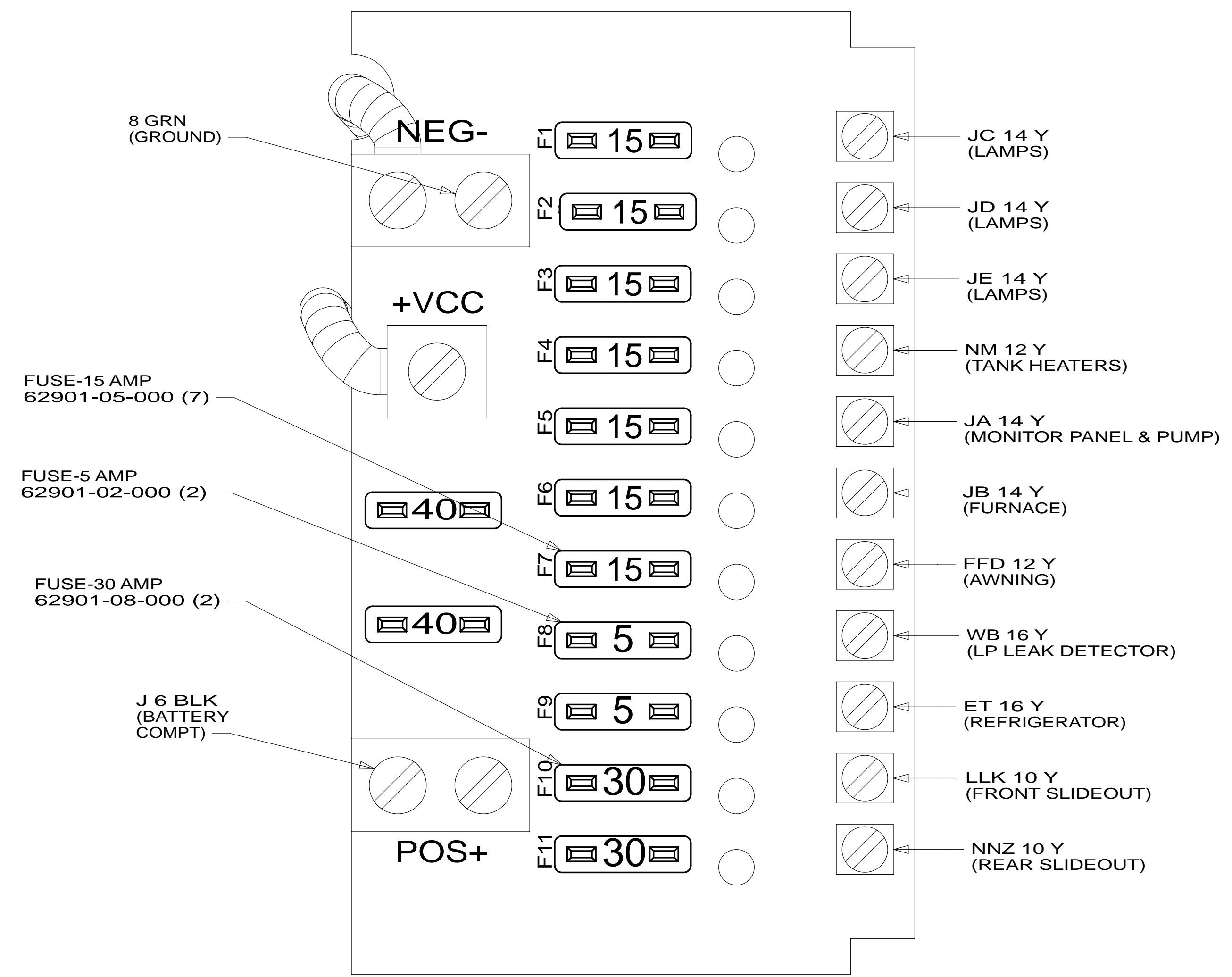
C

B

B

A

A



265 CODES/STANDARDS-CSA/CMVSS

1B1 CODES/STANDARDS USA

1B1 265

FIRST USED  
**14 300-SERIES**

DO NOT SCALE DRAWING

TITLE:  
**LOAD CENTER/ATS ASM**

SHEET 8 PART NO **183838** REV

FOR ELECTRICAL TORQUE SPECIFICATIONS SEE DWG NO. 128783-01-000

FOR ELECTRICAL CALLOUTS SEE DWG NO. 121339-01-000

\* 183838 \* A

8

7

6

5

4

3

2

1



8

7

6

5

4

3

2

1

D

D

C

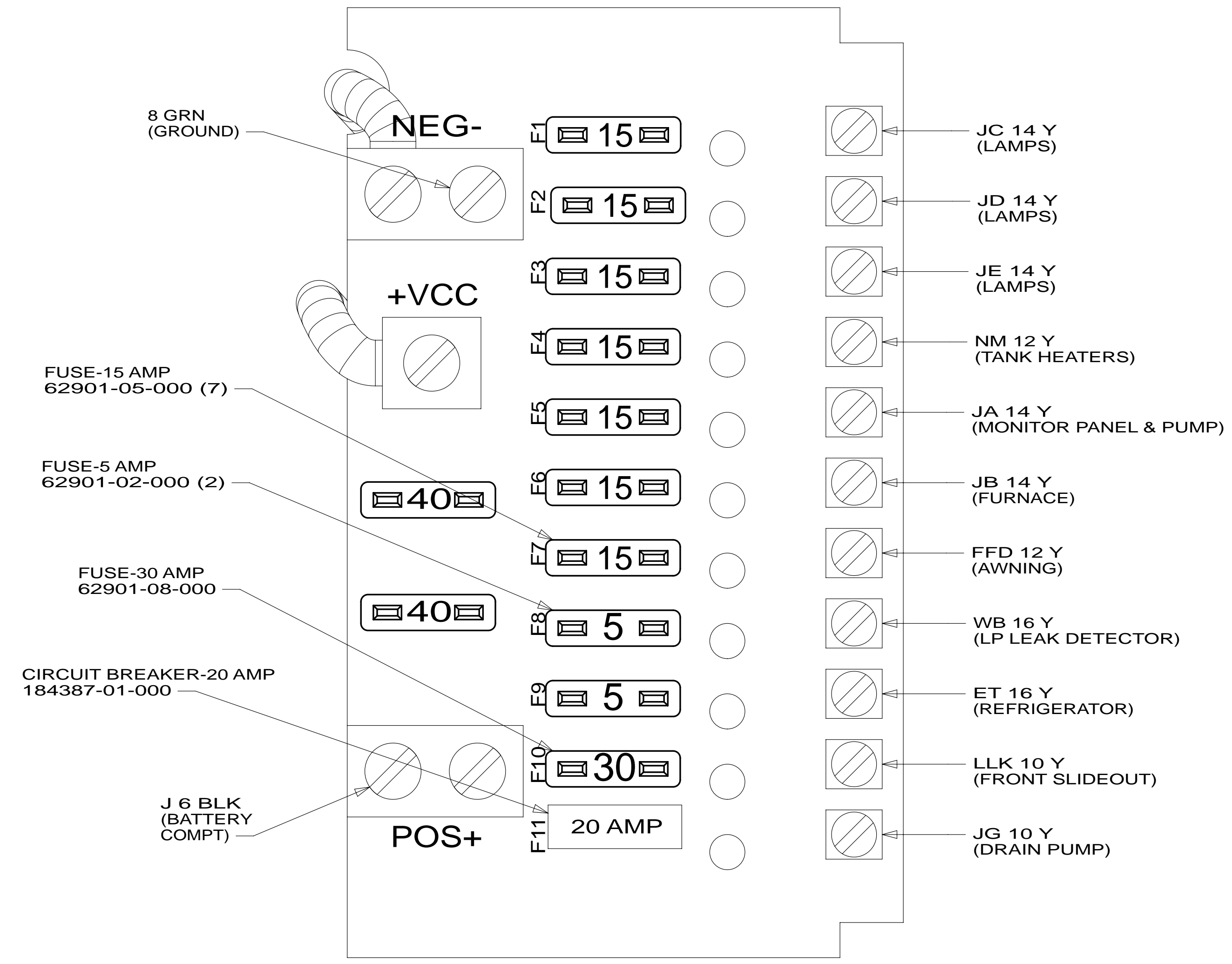
C

B

B

A

A



265 CODES/STANDARDS-CSA/CMVSS

1B1 CODES/STANDARDS USA

1B1 265

FIRST USED  
**14 300-SERIES**

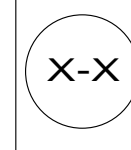
DO NOT SCALE DRAWING

TITLE:  
**LOAD CENTER/ATS ASM**

SHEET 10 PART NO **183838** REV

FOR ELECTRICAL TORQUE SPECIFICATIONS SEE DWG NO. 128783-01-000

FOR ELECTRICAL CALLOUTS SEE DWG NO. 121339-01-000



\* 183838 \*

8

7

6

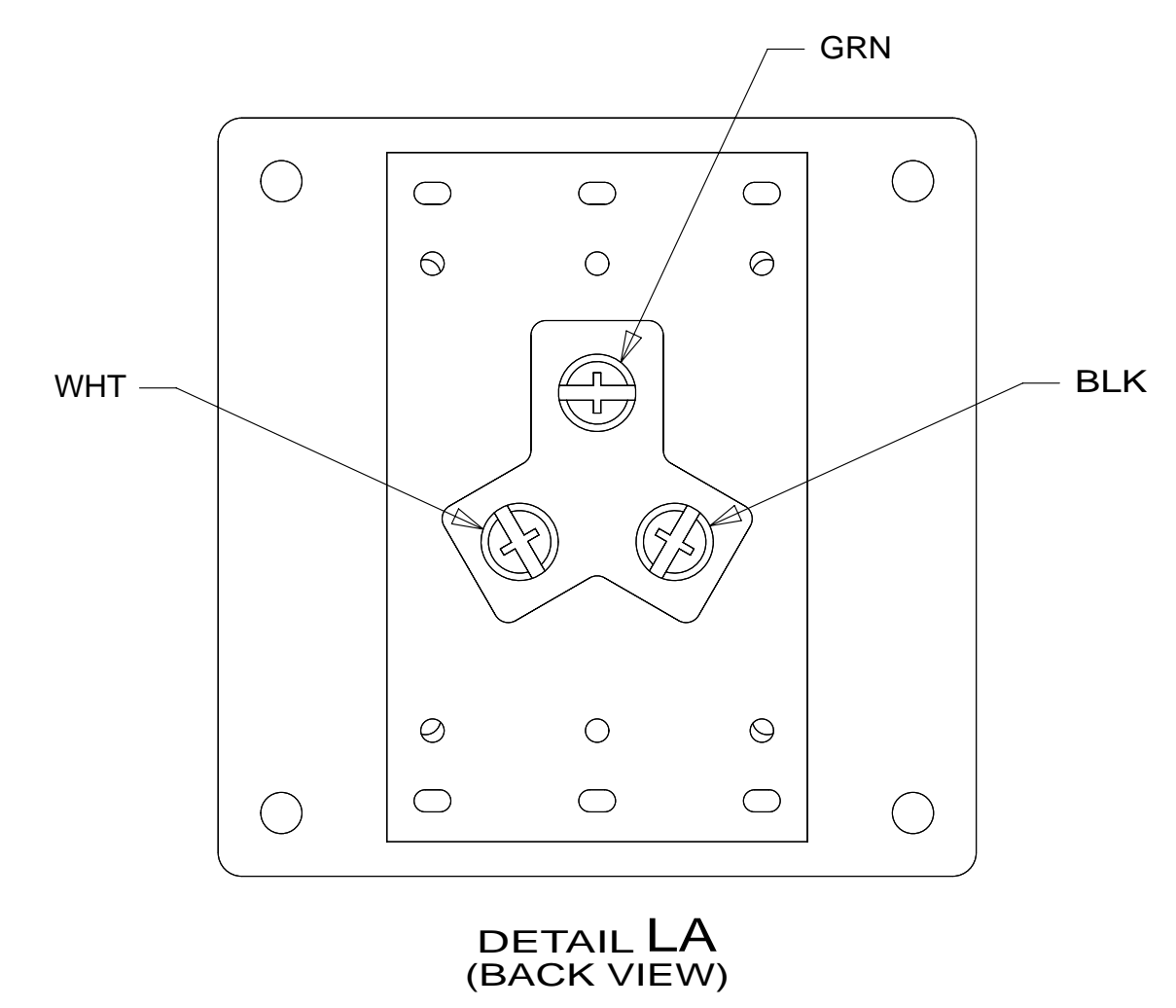
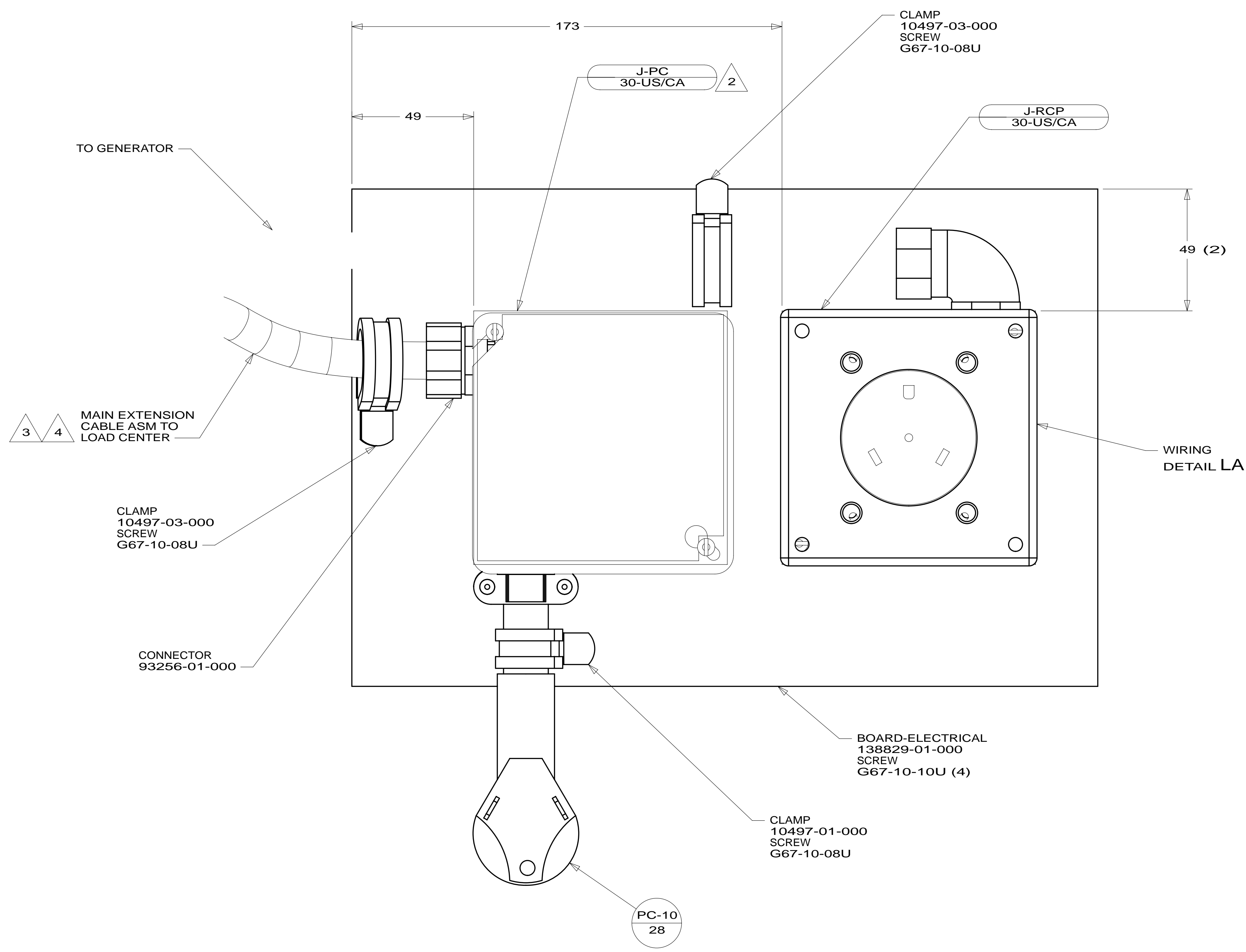
5

4

3

2

1



WIRING  
DETAIL LA

DETAIL LA  
(BACK VIEW)

- NOTES:
- 4 SEE SHEET 1 FOR ADDITIONAL INFORMATION.
  - 3 SEE WIRING INSTL-BODY,110V FOR ADDITIONAL INFORMATION.
  - 2 CONNECT BLK TO BLK, WHT TO WHT, AND GRNDS TO GRNDS.
  - 1. ALL GROUND WIRES TO BE COVERED WITH TUBING 8041-02-000.

265 CODES/STANDARDS-CSA/CMVSS  
1B1 CODES/STANDARDS USA

1B1	265
FIRST USED	
<b>14 300-SERIES</b>	
DO NOT SCALE DRAWING	
TITLE:	
<b>LOAD CENTER/ATS ASM</b>	
SHEET 11	PART NO <b>183838</b> REV

FOR ELECTRICAL  
TORQUE  
SPECIFICATIONS  
SEE DWG NO.  
128783-01-000

X-X  
FOR  
ELECTRICAL  
CALLOUTS  
SEE DWG NO.  
121339-01-000

\* 183838 \*