



DANGER

Danger of electrical shock, burns or death. Always remove all power sources before attempting any repair, service or diagnostic work. Power can be present from shore power, generator, inverter or battery. All power sources must be disabled and secured before performing any service.

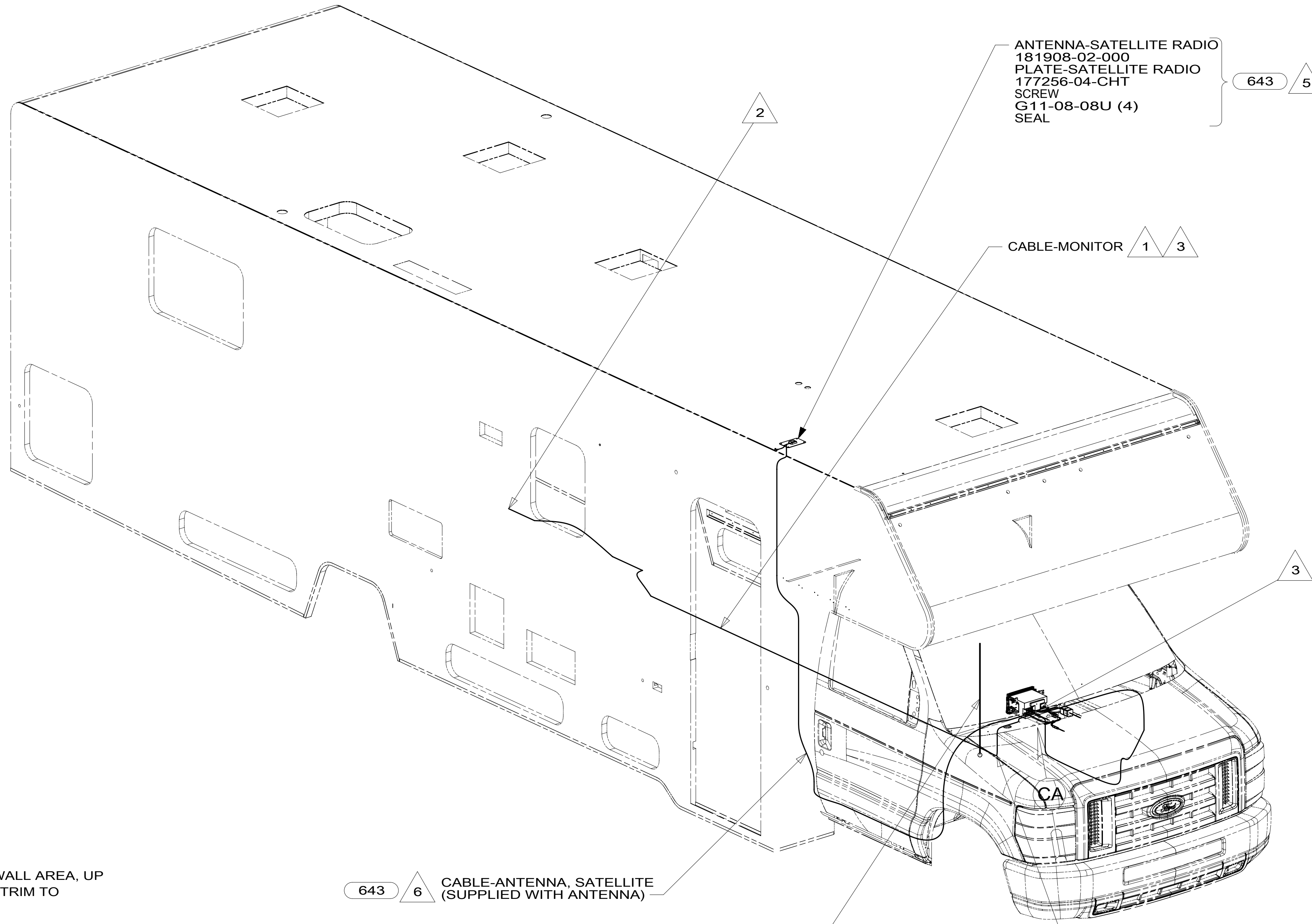
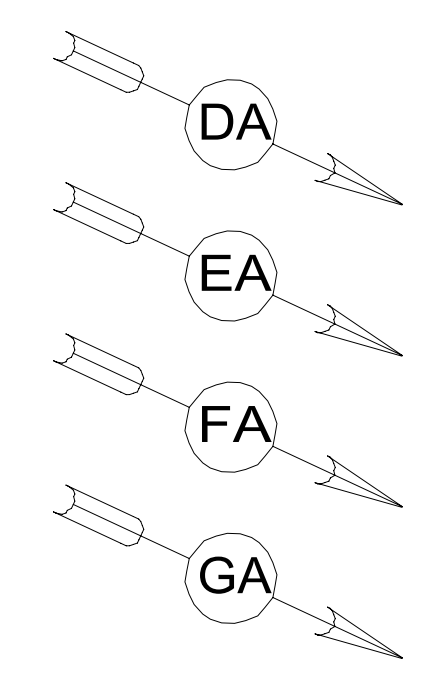


CAUTION

If you lack the skills, tools or equipment to perform diagnostic or repair work leave such work to an authorized Winnebago Industries dealer or other qualified shop.

DRAWING NO.	MODEL	SHEETS
183824-01	331K	1,2,3,4
183824-02	325B,322R	1,2,3,5
183824-03	327Q	1,2,3,7
183824-04	331H	1,2,3,6

RELEASE	REV/DATE	DWG NO	183824
REV ZONE	REVISION RECORD	DATE	DFT-ORIG



- 6 ROUTE CABLE FROM RADIO TO PASSENGER'S STEPWALL AREA, UP WINGWALL, THROUGH SLEEPER BOARD ASM, UNDER TRIM TO ANTENNA PLATE ON ROOF.
- 5 MOUNT ANTENNA AND PLATE SUCH THAT BASE IS SQUARE WITH ROOF AND DIRECTLY OVER HOLE IN ROOF. SEAL BOTH HOLE IN ROOF AND ANTENNA BASE AT SCREWS.
- 4 SUPPLIED WITH CHASSIS. USE SHORTEST SUPPLIED ANTENNA
- 3 ROUTE CABLE TO DASH RADIO.
- 2 WIRING IS ROUTED DIFFERENTLY FOR EACH UNIT FROM THIS POINT REARWARD.
- 1 REAR MONITOR CAMERA CABLE IS PART OF WIRE ASM-CHASSIS AND RUNS ALONG LEFT FRAME RAIL.

643 6 CABLE-ANTENNA, SATELLITE (SUPPLIED WITH ANTENNA)

4 ANTENNA-RADIO

FOR ELECTRICAL TORQUE SPECIFICATIONS SEE DWG NO. 128783-01-000

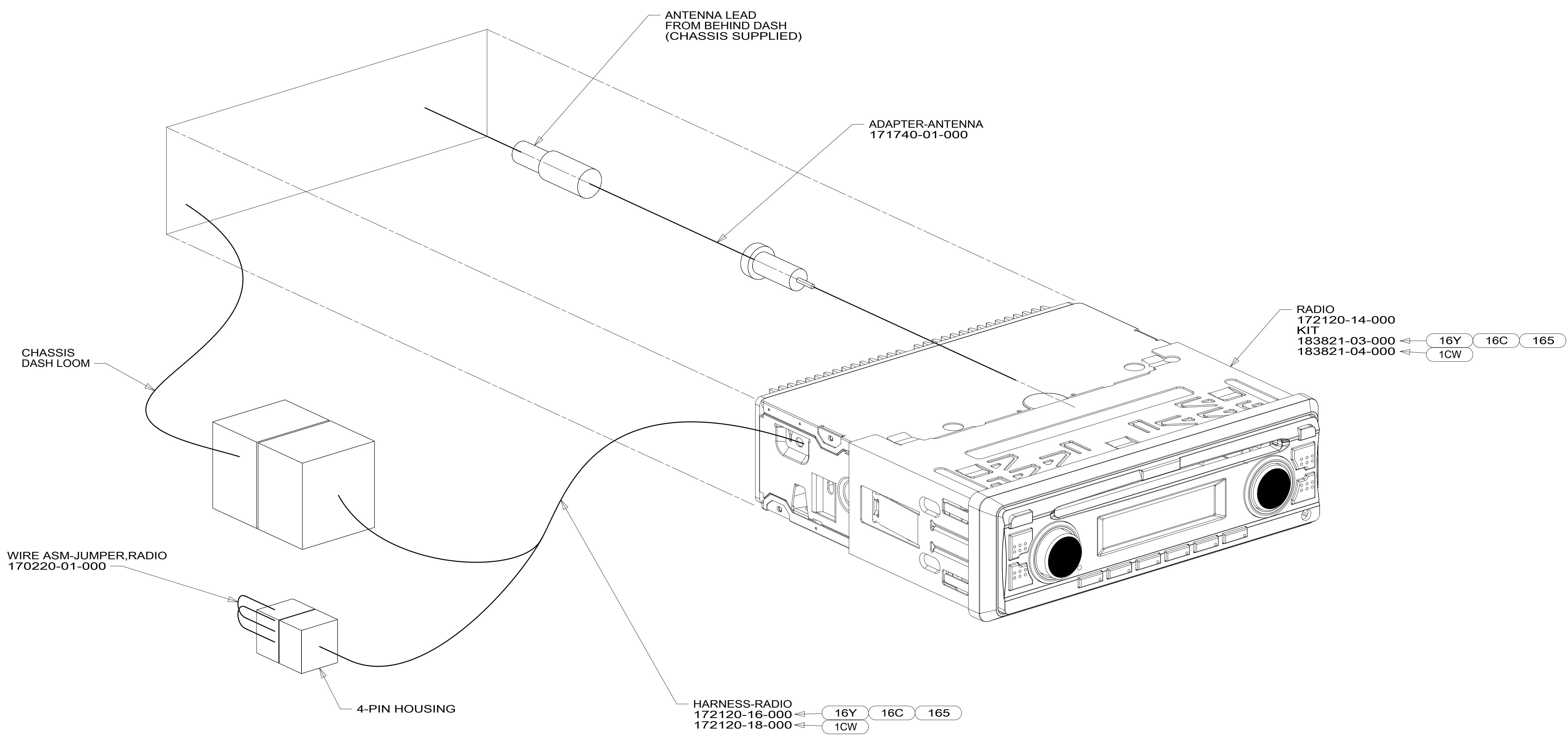
FOR ELECTRICAL CALLOUTS SEE DWG NO. 121339-01-000

- 643 RENTAL-MILES DIXON
- 265 CODES/STANDARDS-CSA/CMVSS
- 1B1 CODES/STANDARDS USA
- 1B1 265

WINNEBAGO COPYRIGHT 2014 WINNEBAGO INDUSTRIES, INC.

DFT-ORIG	ORIG. DATE
CHKR	ALL DIMENSIONS ARE IN MILLIMETERS
P.E.	
M.E.	FIRST USED
DSNR	14 300-SERIES
UNSPECIFIED TOLERANCES ARE:	
WHOLE DIM (X)	: 3
ONE-PLACE (X.X)	: 1.5
TWO-PLACE (X.XX)	: 0.50
ANGLE	: 1°
THIRD ANGLE PROJECTION	
DO NOT SCALE DRAWING	REFER TO ES0018 FOR FASTENER TIGHTENING GUIDELINES
TITLE: RADIO/MONITOR INSTL	
SHEET 1 OF 7	PART NO 183824 REV
REF:	1 28-Jan-2015

183824



- 165 FORD-11,500#GVWR,5.4L ENGINE
- 16C FORD CHASSIS-11,500# GVWR
- 16Y FORD CHASSIS - 14,500#_GVWR
- 1CW CHEVY CHASSIS 12,300 LB.GVWR
- 19V RADIO-AM/FM STEREO CD PLAYER
- 265 CODES/STANDARDS-CSA/CMVSS
- 1B1 CODES/STANDARDS USA

1B1 265 19V

FIRST USED

14 300-SERIES

DO NOT SCALE DRAWING

TITLE: **RADIO/MONITOR INSTL**

SHEET 2 PART NO **183824** REV

FOR ELECTRICAL TORQUE SPECIFICATIONS SEE DWG NO. 128783-01-000

X-X FOR ELECTRICAL CALLOUTS SEE DWG NO. 121339-01-000

*183824 *A

8

7

6

5

4

3

2

1

D

D

C

C

B

B

A

8

7

6

5

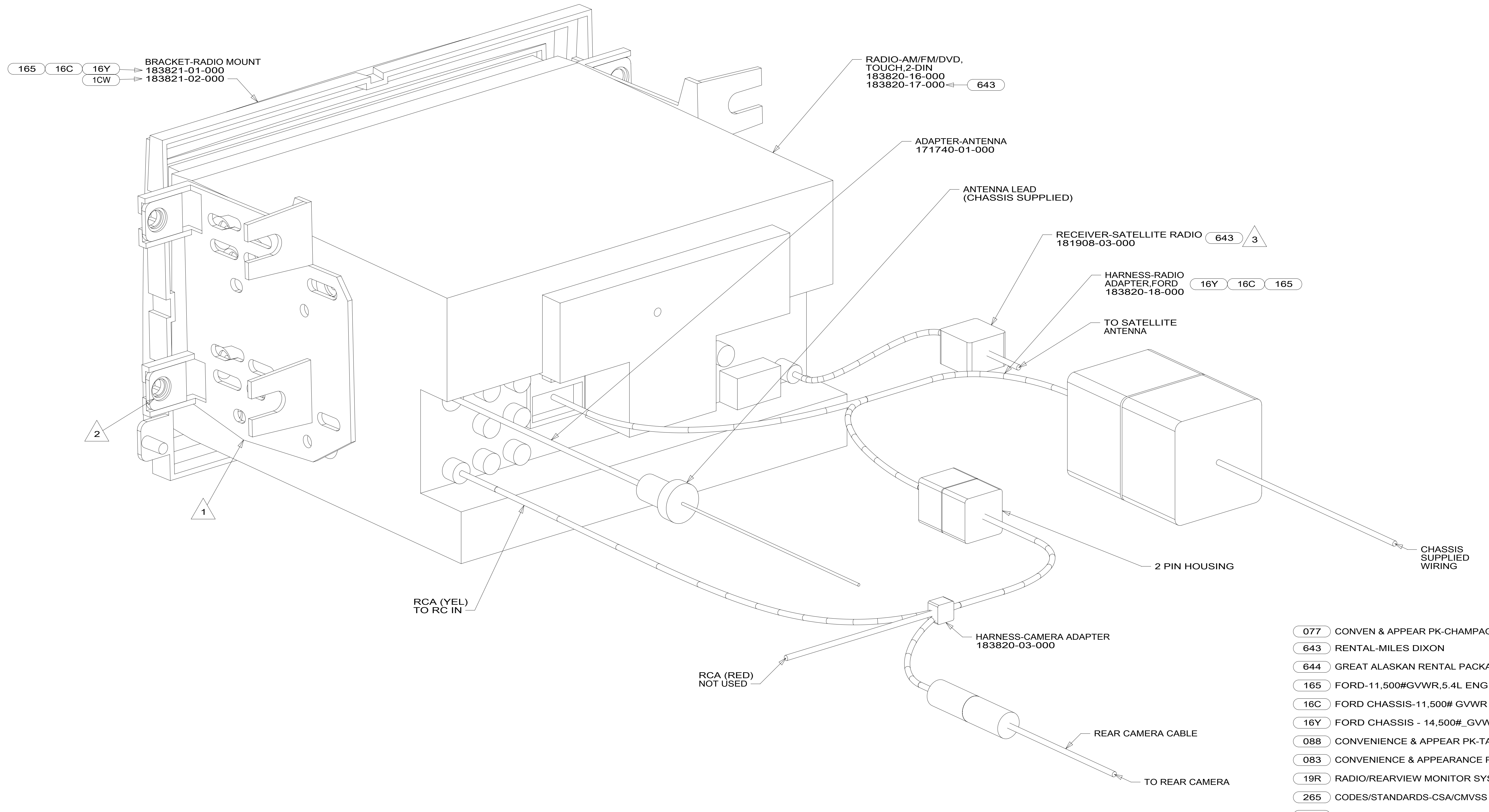
4

3

2

1

28-Jan-2015



- 077 CONVEN & APPEAR PK-CHAMPAGNE
- 643 RENTAL-MILES DIXON
- 644 GREAT ALASKAN RENTAL PACKAGE
- 165 FORD-11,500#GVWR,5.4L ENGINE
- 16C FORD CHASSIS-11,500# GVWR
- 16Y FORD CHASSIS - 14,500#_GVWR
- 088 CONVENIENCE & APPEAR PK-TAUP
- 083 CONVENIENCE & APPEARANCE PKG
- 19R RADIO/REARVIEW MONITOR SYS
- 265 CODES/STANDARDS-CSA/CMVSS
- 1B1 CODES/STANDARDS USA

1B1 265 19R 083 088 077 644

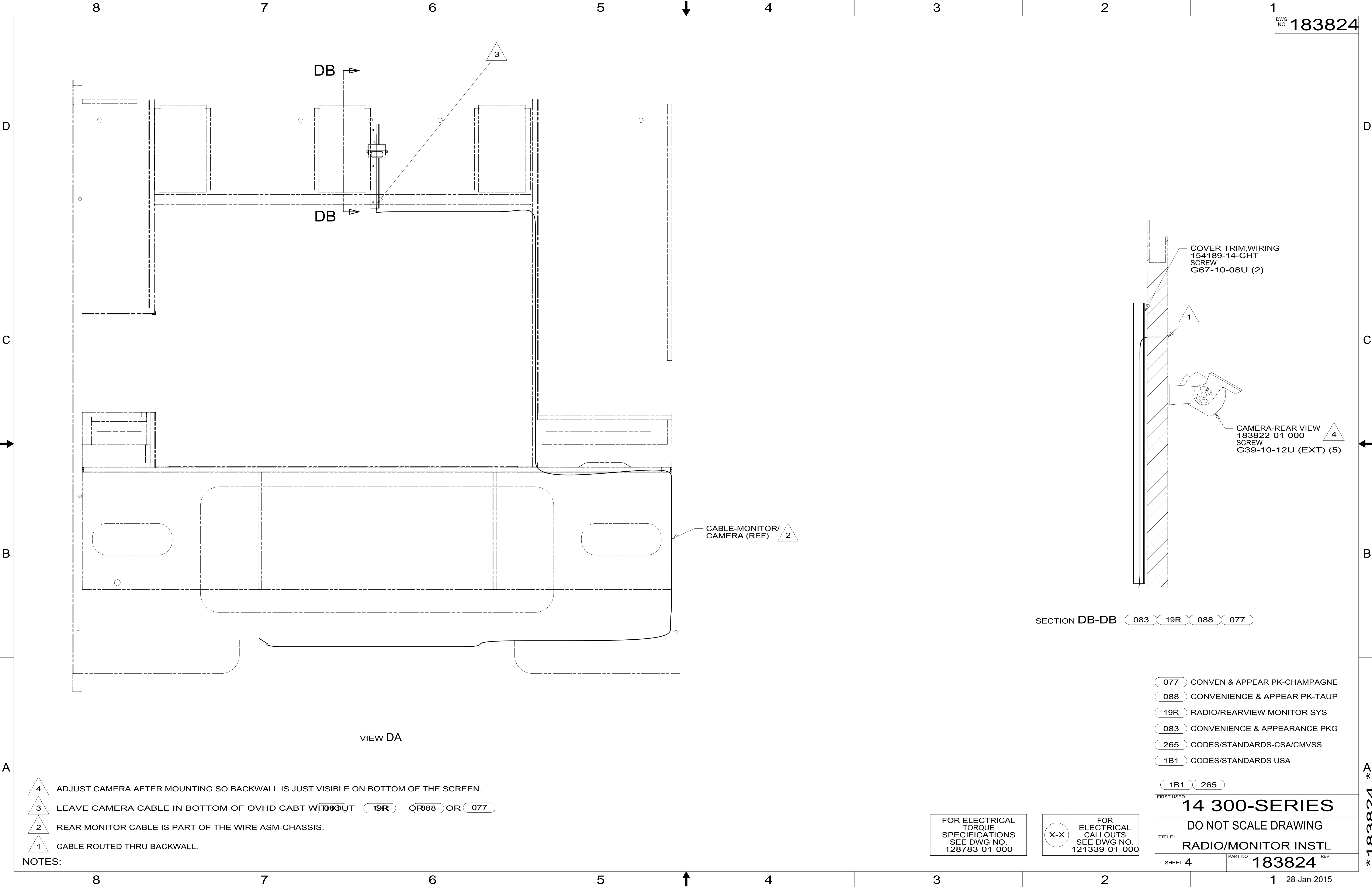
- NOTES:
- 3 WIRE TIE TO RADIO WIRING.
 - 2 USE SPACERS (4) PROVIDED WITH RADIO MOUNTING BRACKET AT 4 DASH MOUNT POINTS.
 - 1 USE SCREWS SUPPLIED W/RADIO TO ATTACH RADIO TO MOUNTING KIT, 3 EACH SIDE.

FOR ELECTRICAL TORQUE SPECIFICATIONS SEE DWG NO. 128783-01-000

FOR ELECTRICAL CALLOUTS SEE DWG NO. 121339-01-000

FIRST USED	
14 300-SERIES	
DO NOT SCALE DRAWING	
TITLE: RADIO/MONITOR INSTL	
SHEET 3	PART NO 183824 REV
1 28-Jan-2015	

*183824 *A



DB

DB

3

CABLE-MONITOR/
CAMERA (REF) 2

COVER-TRIM, WIRING
154189-14-CHT
SCREW
G67-10-08U (2)

CAMERA-REAR VIEW
183822-01-000
SCREW
G39-10-12U (EXT) (5)

SECTION DB-DB 083 19R 088 077

VIEW DA

- NOTES:
- 4 ADJUST CAMERA AFTER MOUNTING SO BACKWALL IS JUST VISIBLE ON BOTTOM OF THE SCREEN.
 - 3 LEAVE CAMERA CABLE IN BOTTOM OF OVHD CABT W/OUT 19R 088 OR 077
 - 2 REAR MONITOR CABLE IS PART OF THE WIRE ASM-CHASSIS.
 - 1 CABLE ROUTED THRU BACKWALL.

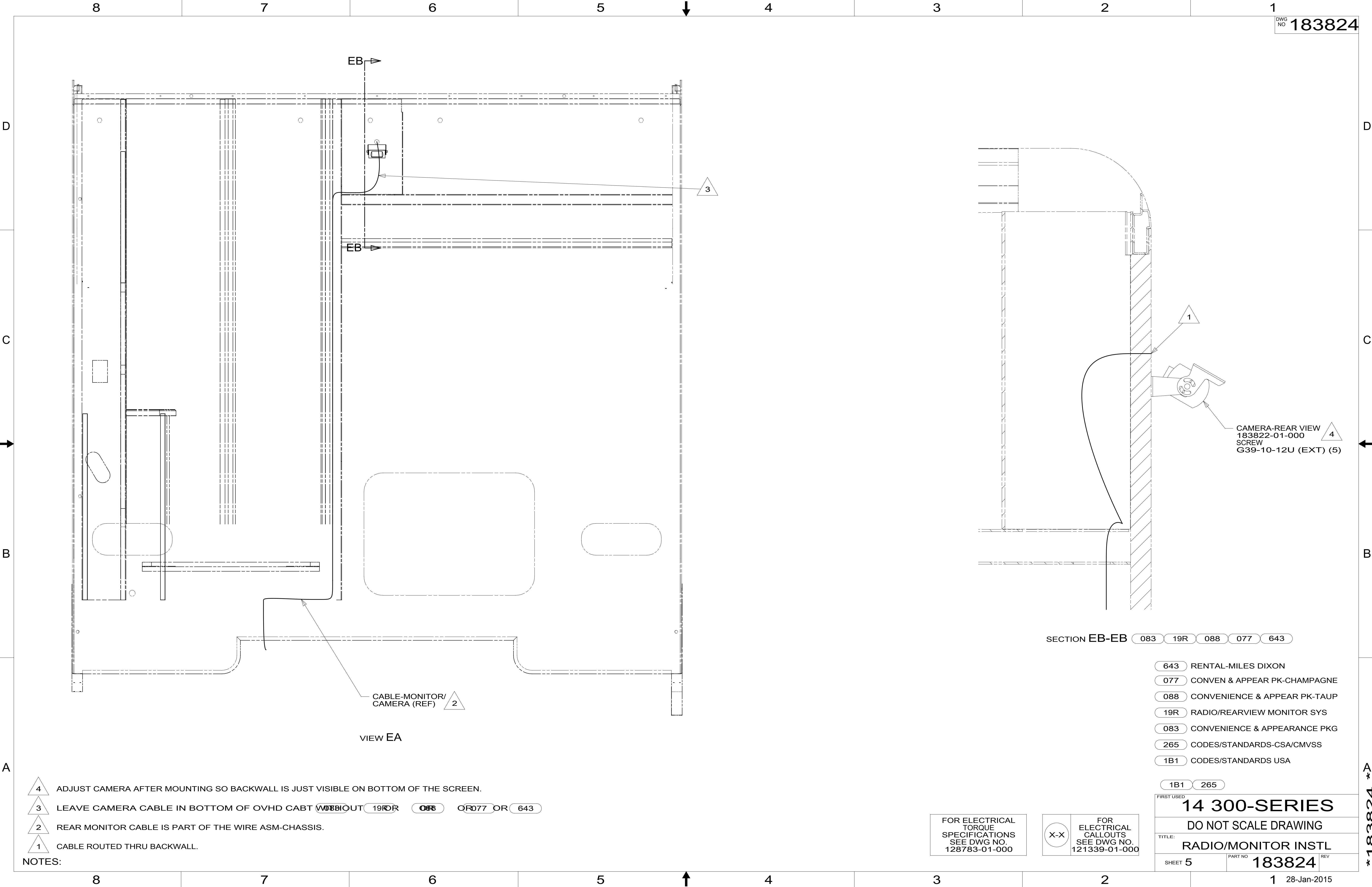
- 077 CONVEN & APPEAR PK-CHAMPAGNE
- 088 CONVENIENCE & APPEAR PK-TAUP
- 19R RADIO/REARVIEW MONITOR SYS
- 083 CONVENIENCE & APPEARANCE PKG
- 265 CODES/STANDARDS-CSA/CMVSS
- 1B1 CODES/STANDARDS USA

FIRST USED	
14 300-SERIES	
DO NOT SCALE DRAWING	
TITLE: RADIO/MONITOR INSTL	
SHEET 4	PART NO. 183824 REV
1 28-Jan-2015	

FOR ELECTRICAL
TORQUE
SPECIFICATIONS
SEE DWG NO.
128783-01-000

(X-X)
FOR ELECTRICAL
CALLOUTS
SEE DWG NO.
121339-01-000

*183824 *A



- NOTES:
- 4 ADJUST CAMERA AFTER MOUNTING SO BACKWALL IS JUST VISIBLE ON BOTTOM OF THE SCREEN.
 - 3 LEAVE CAMERA CABLE IN BOTTOM OF OVHD CABT ~~WITHOUT~~ **19R** ~~OR~~ **088** ~~OR~~ **077** OR **643**
 - 2 REAR MONITOR CABLE IS PART OF THE WIRE ASM-CHASSIS.
 - 1 CABLE ROUTED THRU BACKWALL.

SECTION EB-EB **083** **19R** **088** **077** **643**

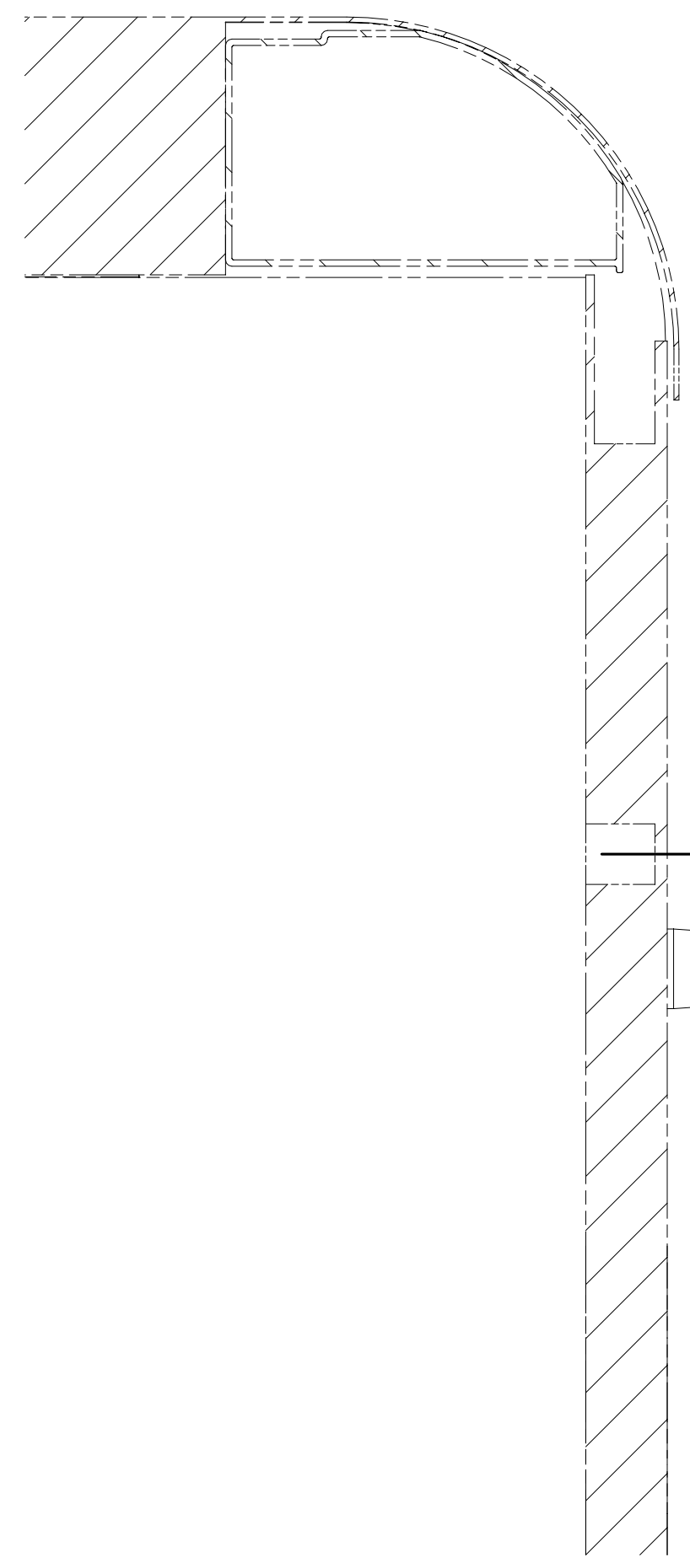
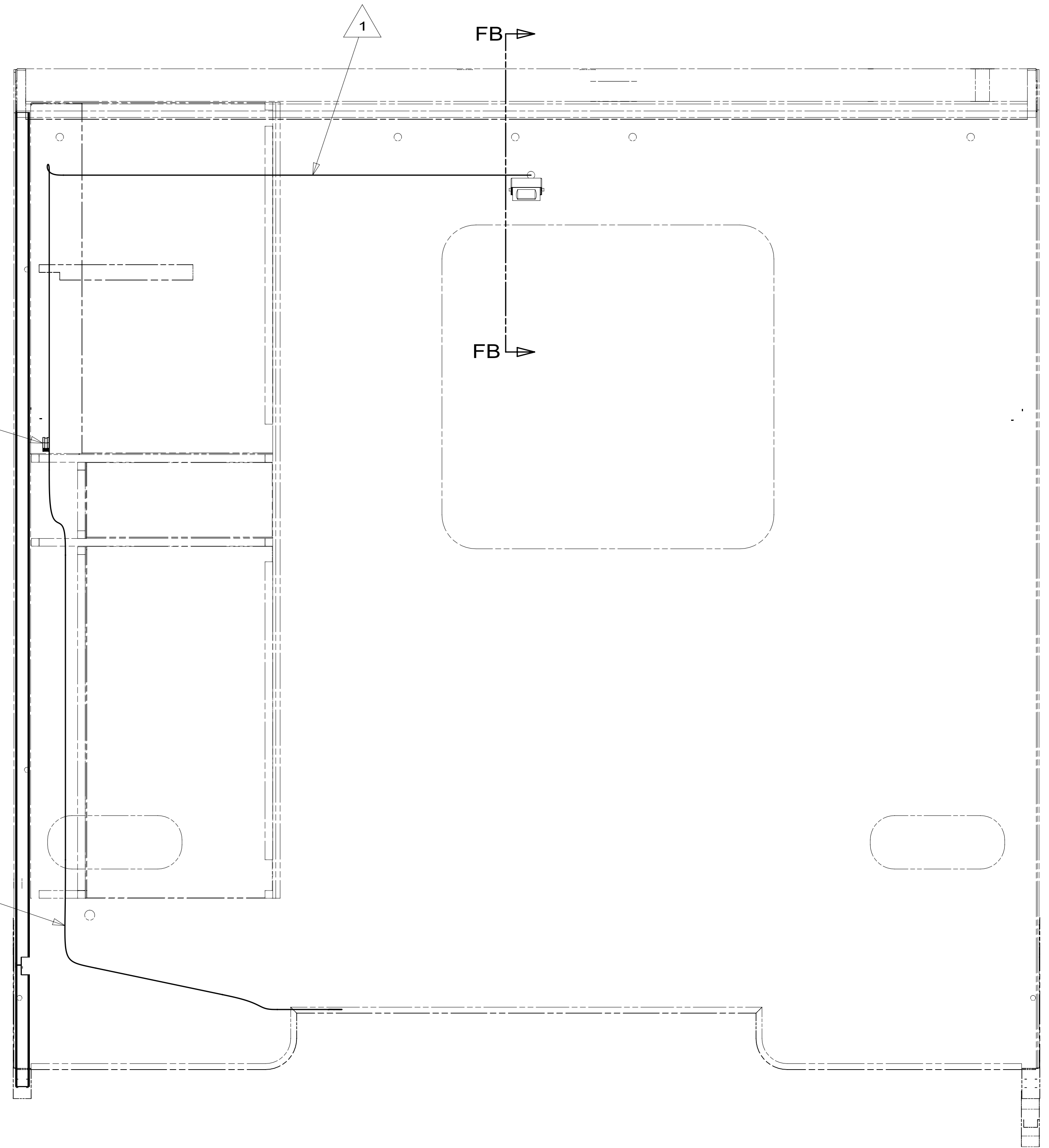
- 643** RENTAL-MILES DIXON
- 077** CONVEN & APPEAR PK-CHAMPAGNE
- 088** CONVENIENCE & APPEAR PK-TAUP
- 19R** RADIO/REARVIEW MONITOR SYS
- 083** CONVENIENCE & APPEARANCE PKG
- 265** CODES/STANDARDS-CSA/CMVSS
- 1B1** CODES/STANDARDS USA

FIRST USED	
14 300-SERIES	
DO NOT SCALE DRAWING	
TITLE: RADIO/MONITOR INSTL	
SHEET 5	PART NO. 183824 REV

FOR ELECTRICAL TORQUE SPECIFICATIONS SEE DWG NO. 128783-01-000

X-X FOR ELECTRICAL CALLOUTS SEE DWG NO. 121339-01-000

*183824 *A



SECTION FB-FB 083 088 19R 077

VIEW FA

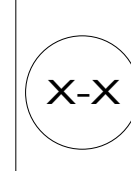
- NOTES:
- 4 ADJUST CAMERA AFTER MOUNTING SO BACKWALL IS JUST VISIBLE ON BOTTOM OF THE SCREEN.
 - 3 REAR MONITOR CABLE IS PART OF THE WIRE ASM-CHASSIS.
 - 2 EXCESS CABLE TO BE COILED BEHIND CORNER BLOCKOUT PANEL AND CLAMPED TO CABINET STICK.
 - 1 CABLE TO BE PULLED THROUGH ROUTED PATH FROM CORNER TO CAMERA. ONCE CONNECTED TO CAMERA, PULL CABLE BACK THROUGH ROUTED PATH ENOUGH TO ALLOW CABLE TO FIT INTO SLOT.

- 077 CONVEN & APPEAR PK-CHAMPAGNE
- 19R RADIO/REARVIEW MONITOR SYS
- 088 CONVENIENCE & APPEAR PK-TAUP
- 083 CONVENIENCE & APPEAR PK-WHTE
- 265 CODES/STANDARDS-CSA/CMVSS
- 1B1 CODES/STANDARDS USA

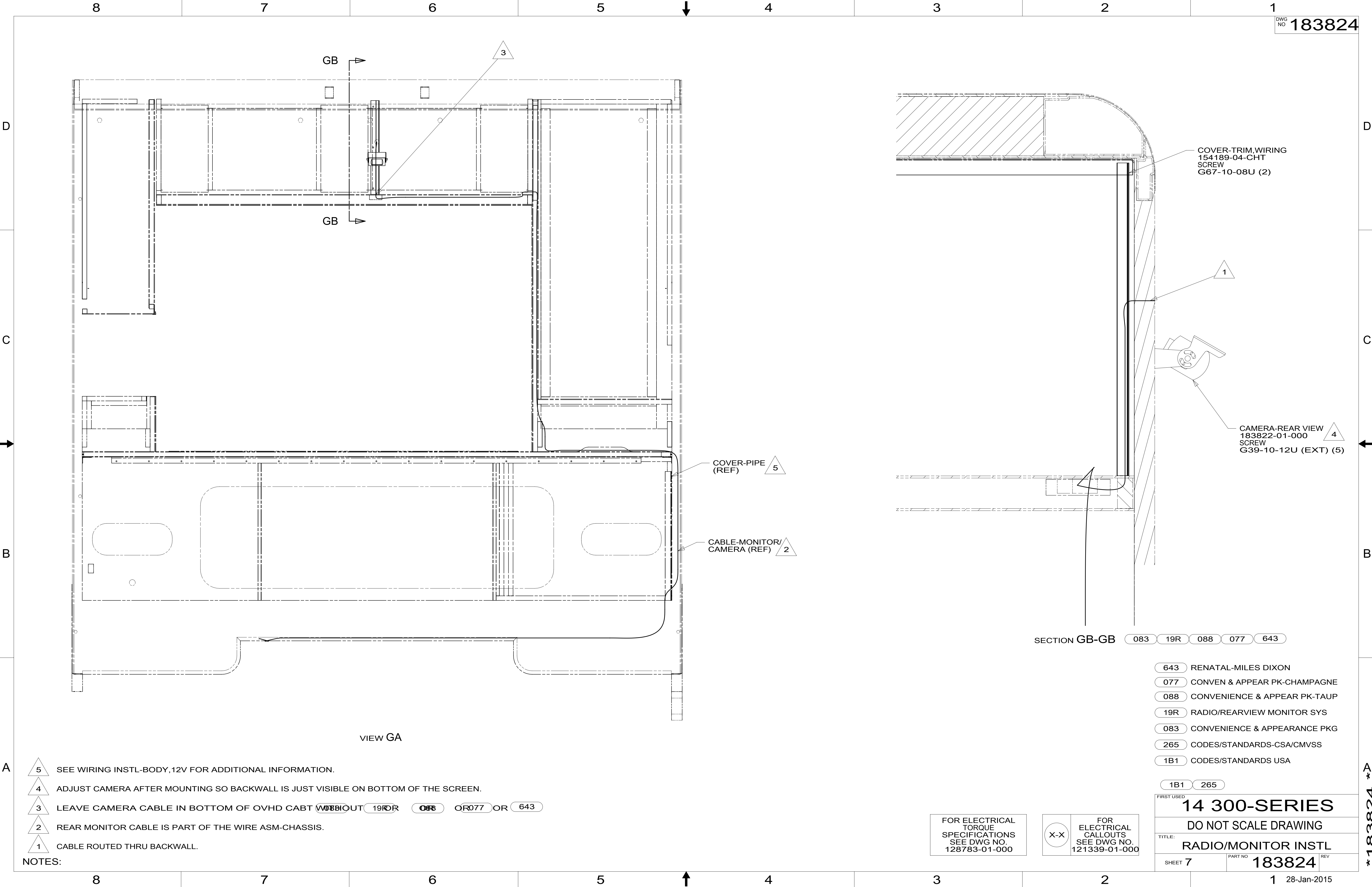
FIRST USED	
14 300-SERIES	
DO NOT SCALE DRAWING	
TITLE: RADIO/MONITOR INSTL	
SHEET 6	PART NO 183824 REV
1 28-Jan-2015	

FOR ELECTRICAL TORQUE SPECIFICATIONS SEE DWG NO. 128783-01-000

FOR ELECTRICAL CALLOUTS SEE DWG NO. 121339-01-000



*183824 *A



GB

GB

3

COVER-PIPE (REF) 5

CABLE-MONITOR/CAMERA (REF) 2

COVER-TRIM, WIRING
154189-04-CHT
SCREW
G67-10-08U (2)

1

CAMERA-REAR VIEW
183822-01-000
SCREW
G39-10-12U (EXT) (5)

4

SECTION GB-GB 083 19R 088 077 643

VIEW GA

- NOTES:
- 5 SEE WIRING INSTL-BODY, 12V FOR ADDITIONAL INFORMATION.
 - 4 ADJUST CAMERA AFTER MOUNTING SO BACKWALL IS JUST VISIBLE ON BOTTOM OF THE SCREEN.
 - 3 LEAVE CAMERA CABLE IN BOTTOM OF OVHD CABT ~~WIRING~~ ~~OUT~~ 19R OR 088 OR 077 OR 643
 - 2 REAR MONITOR CABLE IS PART OF THE WIRE ASM-CHASSIS.
 - 1 CABLE ROUTED THRU BACKWALL.

- 643 RENATAL-MILES DIXON
- 077 CONVEN & APPEAR PK-CHAMPAGNE
- 088 CONVENIENCE & APPEAR PK-TAUP
- 19R RADIO/REARVIEW MONITOR SYS
- 083 CONVENIENCE & APPEARANCE PKG
- 265 CODES/STANDARDS-CSA/CMVSS
- 1B1 CODES/STANDARDS USA

FIRST USED	
14 300-SERIES	
DO NOT SCALE DRAWING	
TITLE: RADIO/MONITOR INSTL	
SHEET 7	PART NO 183824 REV

FOR ELECTRICAL TORQUE SPECIFICATIONS SEE DWG NO. 128783-01-000

X-X FOR ELECTRICAL CALLOUTS SEE DWG NO. 121339-01-000

*183824 *A