



DANGER

Danger of electrical shock, burns or death. Always remove all power sources before attempting any repair, service or diagnostic work. Power can be present from shore power, generator, inverter or battery. All power sources must be disabled and secured before performing any service.



CAUTION

If you lack the skills, tools or equipment to perform diagnostic or repair work leave such work to an authorized Winnebago Industries dealer or other qualified shop.

| DRAWING NO. | MODEL | SHEETS |
|-------------|-------|---------|
| 183753-01 | P34B | 1,2,4,5 |
| 183753-02 | P40U | 1,2,3,5 |
| 183753-03 | P36M | 1,2,4,5 |
| 183753-04 | P42E | 1,2,3,5 |

| | | |
|----------|-----------------|------------------|
| RELEASE | REV/DATE A | DWG NO 183753 |
| REV ZONE | REVISION RECORD | DATE DTR-ORIG |

| | | P34B | P40U | P36M | P42E |
|--------|-----|---------------|---------------|---------------|---------------|
| RED | 1B1 | 136135-07-072 | 136135-07-080 | 136135-07-080 | 136135-07-090 |
| | 265 | 136136-07-072 | 136136-07-080 | 136136-07-080 | 136136-07-090 |
| GRN | 1B1 | 136135-08-072 | 136135-08-080 | 136135-08-080 | 136135-08-090 |
| | 265 | 136136-08-072 | 136136-08-080 | 136136-08-080 | 136136-08-090 |
| LT BLU | 1B1 | | 136135-21-080 | | 136135-21-090 |
| | 265 | | 136136-21-080 | | 136136-21-090 |
| YEL | 1B1 | 136131-05-075 | 136131-05-055 | 136131-05-054 | 136131-05-015 |
| | 265 | 136134-05-075 | 136134-05-055 | 136134-05-054 | 136134-05-015 |
| GLD | 1B1 | 136131-10-068 | 136131-10-070 | 136131-10-054 | 136131-10-070 |
| | 265 | 136134-10-068 | 136134-10-070 | 136134-10-054 | 136134-10-070 |
| GLD-2 | 1B1 | 136131-20-068 | 136131-20-070 | 136131-20-054 | 136131-20-070 |
| | 265 | 136134-20-068 | 136134-20-070 | 136134-20-054 | 136134-20-070 |
| WHT | 1B1 | 136135-09-051 | 136135-09-050 | 136135-09-060 | 136135-09-065 |
| | 265 | 136136-09-051 | 136136-09-050 | 136136-09-060 | 136136-09-065 |
| BLU | 1B1 | 136131-02-200 | 136131-02-110 | 136131-02-085 | 136131-02-074 |
| | 265 | 136134-02-200 | 136134-02-110 | 136134-02-085 | 136134-02-074 |
| BRN | 1B1 | 136131-03-080 | 136131-03-120 | 136131-03-198 | 136131-03-157 |
| | 265 | 136134-03-080 | 136134-03-120 | 136134-03-198 | 136134-03-157 |

| | | P34B | P40U | P36M | P42E |
|---------------------------|-----|---------------|---------------|---------------|---------------|
| PUR | 1B1 | 136131-04-202 | 136131-04-065 | 136131-04-165 | 136131-04-100 |
| | 265 | 136134-04-202 | 136134-04-065 | 136134-04-165 | 136134-04-100 |
| ORG | 1B1 | 136131-16-126 | 136131-16-140 | 136131-16-170 | 136131-16-140 |
| | 265 | 136134-16-126 | 136134-16-140 | 136134-16-170 | 136134-16-140 |
| BLK | 1B1 | 136131-06-075 | 136131-06-065 | 136131-06-054 | 136131-06-040 |
| | 265 | 136134-06-075 | 136134-06-065 | 136134-06-054 | 136134-06-040 |
| GRY | 1B1 | | 136131-15-055 | 136131-15-065 | 136131-15-015 |
| | 265 | | 136134-15-055 | 136134-15-065 | 136134-15-015 |
| INVERTER CHARGER MAIN | 1B1 | 136137-01-065 | 136137-01-070 | 136137-01-065 | 136137-01-053 |
| | 265 | 136138-01-065 | 136138-01-070 | 136138-01-065 | 136138-01-053 |
| INVERTER CHARGER SUB MAIN | 1B1 | 136137-01-065 | 136137-01-070 | 136137-01-065 | 136137-01-053 |
| | 265 | 136138-01-065 | 136138-01-070 | 136138-01-065 | 136138-01-053 |
| CABLE ASM-MAIN,6 AWG | | 176841-01-030 | 176841-01-025 | 176841-01-025 | 176841-01-045 |
| MAIN GROUND | | 136145-01-058 | 136145-01-014 | 136145-01-065 | 136145-01-050 |
| ATS GROUND | | 136145-01-052 | 136145-01-010 | 136145-01-050 | 136145-01-025 |
| INVERTER GROUND | | 136145-04-006 | 136145-04-055 | 136145-04-006 | 136145-04-025 |
| GENERATOR CABLE ASM | | 136148-02-104 | 136148-02-123 | 136148-02-115 | 136148-02-088 |

14C

- FIREPLACE-ELECTRIC
- CODES/STANDARDS-CSA/CMVSS
- CODES/STANDARDS USA

| | | | |
|-----------------------------------|--|---|--|
| | | COPYRIGHT 2013 WINNEBAGO INDUSTRIES, INC. | |
| DTR | ORIG. DATE | ALL DIMENSIONS ARE IN MILLIMETERS | |
| CHKR | | | |
| P.E. | | | |
| M.E. | FIRST USED | | |
| DSNR | | 14 P-SERIES | |
| UNSPECIFIED TOLERANCES ARE: | | MATERIAL: | |
| WHOLE DIM (X) | : 3 | | |
| ONE-PLACE (X.X) | : 1.5 | | |
| TWO-PLACE (X.XX) | : 0.50 | | |
| ANGLE | : 1' | | |
| THIRD ANGLE PROJECTION | | | |
| DO NOT SCALE DRAWING | REFER TO ES0018 FOR FASTENER TIGHTENING GUIDELINES | | |
| TITLE: LOAD CENTER/ATS ASM | | | |
| SHEET 1 OF 5 | PART NO 183753 | REV | |

SEE DETAIL BD FOR CONNECTOR INSTALLATION.
 SEE DETAIL BA FOR CONNECTOR INSTALLATION.
NOTES:

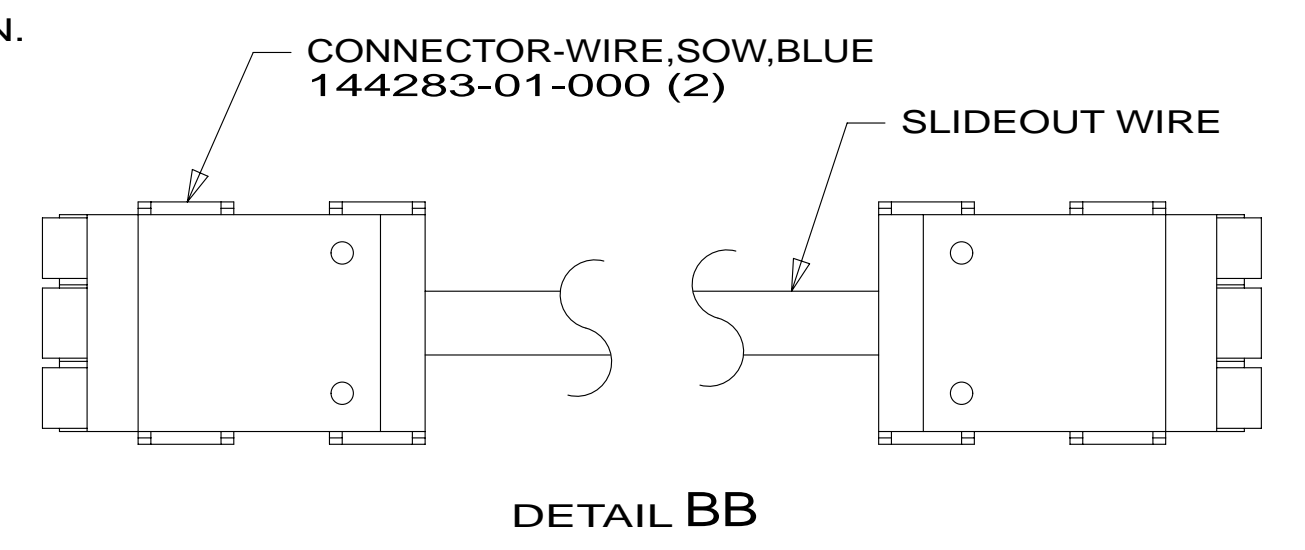
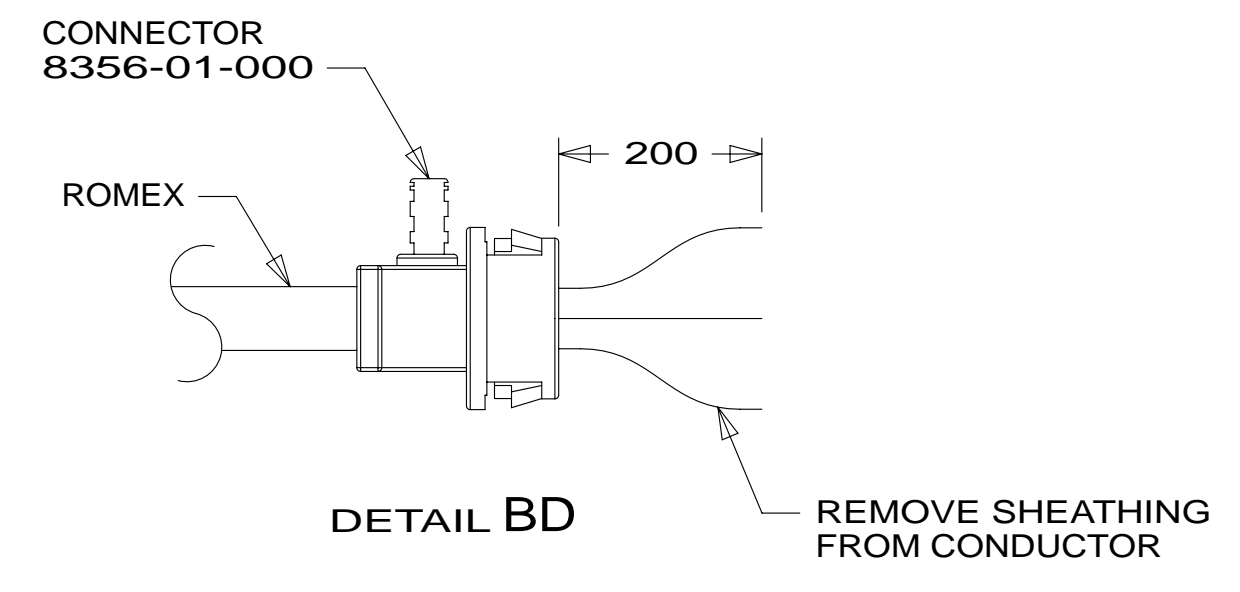
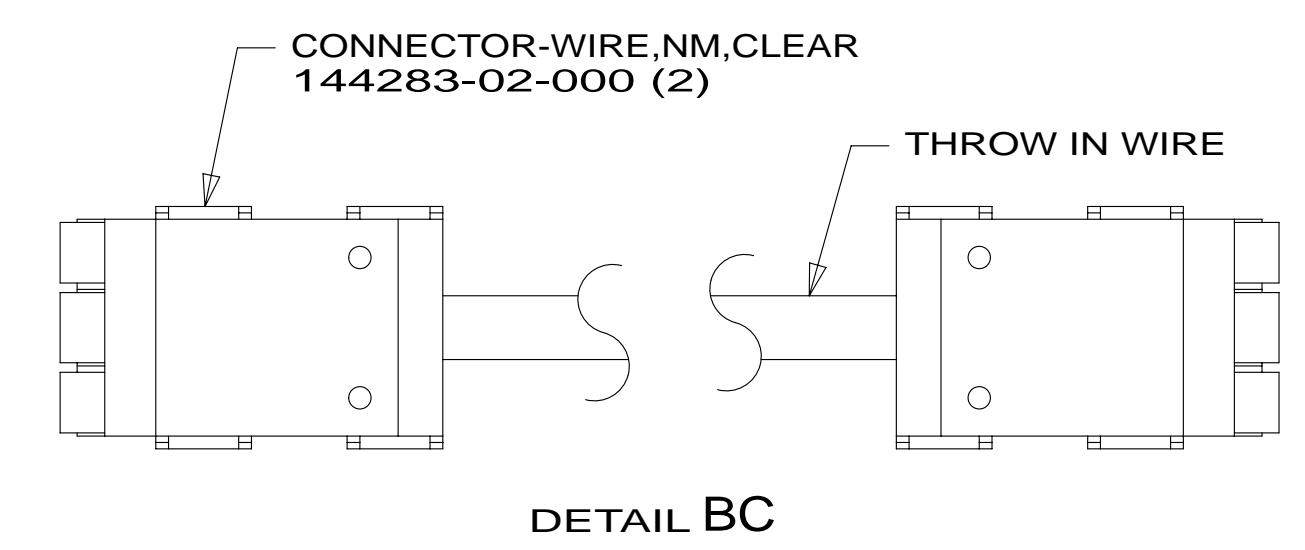
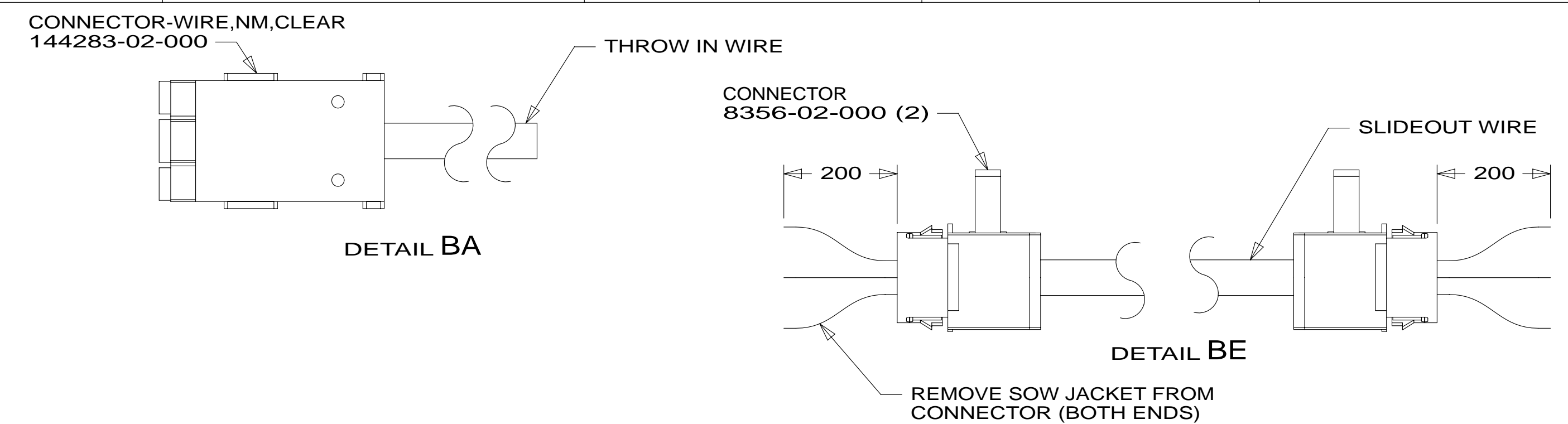
FOR ELECTRICAL TORQUE SPECIFICATIONS SEE DWG NO. 128783-01-000

FOR ELECTRICAL CALLOUTS SEE DWG NO. 121339-01-000

* 183753 * A

| | | P34B | P40U | P36M | P42E |
|-------------------|-----|---------------|---------------|---------------|---------------|
| THROW IN WIRE #1 | 1B1 | 136131-02-006 | 136131-02-070 | 136131-05-032 | 136131-02-110 |
| | 265 | 136134-02-006 | 136134-02-070 | 136134-05-032 | 136134-02-110 |
| THROW IN WIRE #2 | 1B1 | 136131-04-075 | | 136131-04-013 | 136131-04-010 |
| | 265 | 136134-04-075 | | 136134-04-013 | 136134-04-010 |
| THROW IN WIRE #3 | 1B1 | 136131-05-025 | 136131-04-110 | 136131-02-075 | 136131-05-023 |
| | 265 | 136134-05-025 | 136134-04-110 | 136134-02-075 | 136134-05-023 |
| THROW IN WIRE #4 | 1B1 | 136131-04-045 | 136131-04-030 | 136131-10-040 | 136131-04-013 |
| | 265 | 136134-04-045 | 136134-04-030 | 136134-10-040 | 136134-04-013 |
| THROW IN WIRE #5 | 1B1 | 136131-02-009 | 136131-05-016 | 136131-20-040 | 136131-04-010 |
| | 265 | 136134-02-009 | 136134-05-016 | 136134-20-040 | 136134-04-010 |
| THROW IN WIRE #6 | 1B1 | | 136131-03-015 | 136131-02-086 | 136131-02-030 |
| | 265 | | 136134-03-015 | 136134-02-086 | 136134-02-030 |
| THROW IN WIRE #7 | 1B1 | | 136131-02-006 | 136131-04-010 | |
| | 265 | | 136134-02-006 | 136134-04-010 | |
| THROW IN WIRE #8 | 1B1 | | | 136135-09-055 | |
| | 265 | | | 136136-09-055 | |
| THROW IN WIRE #9 | 1B1 | | | | |
| | 265 | | | | |
| THROW IN WIRE #10 | 1B1 | | | | |
| | 265 | | | | |
| THROW IN WIRE #11 | 1B1 | | | | |
| | 265 | | | | |
| THROW IN WIRE #12 | 1B1 | | | | |
| | 265 | | | | |

| | P34B | P40U | P36M | P42E |
|---------------------|---------------|---------------|---------------|---------------|
| SLIDEOUT #1 WIRE #1 | 136151-04-026 | 136151-03-030 | 136151-03-027 | 136151-02-058 |
| SLIDEOUT #1 WIRE #2 | 136151-05-026 | 136151-04-030 | | 136151-06-058 |
| SLIDEOUT #1 WIRE #3 | 136151-03-026 | 136151-05-030 | | |
| SLIDEOUT #1 WIRE #4 | 136151-06-026 | 136151-15-030 | | |
| SLIDEOUT #2 WIRE #1 | | 136151-04-012 | | 136151-04-015 |
| SLIDEOUT #2 WIRE #2 | | | | |
| SLIDEOUT #3 WIRE #1 | 136151-02-016 | 136151-04-016 | | 136151-04-042 |
| SLIDEOUT #3 WIRE #2 | | | | 136151-15-042 |
| SLIDEOUT #3 WIRE #3 | | | | 136151-05-042 |
| SLIDEOUT #4 WIRE #1 | 136151-02-023 | 136151-02-048 | 136151-05-025 | |
| SLIDEOUT #4 WIRE #2 | | 136151-06-048 | 136151-06-025 | |
| SLIDEOUT #4 WIRE #3 | | | 136151-02-025 | |
| SLIDEOUT #4 WIRE #4 | | | 136151-04-025 | |
| SLIDEOUT #4 WIRE #5 | | | 136151-10-025 | |
| SLIDEOUT #4 WIRE #6 | | | 136151-20-025 | |
| SLIDEOUT #4 WIRE #7 | | | 136152-09-028 | |



- NOTES:
- SEE WIRING INSTL-TV/DVD FOR ADDITIONAL INFORMATION.
 - SEE DETAIL BD FOR CONNECTOR INSTALLATION.
 - SEE DETAIL BE FOR CONNECTOR INSTALLATION.
 - SEE DETAIL BC FOR CONNECTOR INSTALLATION.
 - SEE DETAIL BB FOR CONNECTOR INSTALLATION.
 - SEE DETAIL BA FOR CONNECTOR INSTALLATION.

- REFRIGERATOR/FREEZER PORTABL
- TV-40"-(FRONT) COLOR, STEREO
- BED-KING,AIR SLEEP SYSTEM
- BED-QUEEN, AIR SLEEP SYSTEM
- BED-QUEEN, INNERSPRING
- ENTERTAIN CENTR/EXT TV-DVD
- FIREPLACE-ELECTRIC
- CODES/STANDARDS-CSA/CMVSS
- CODES/STANDARDS-USA

FOR ELECTRICAL TORQUE SPECIFICATIONS SEE DWG NO. 128783-01-000

FOR ELECTRICAL CALLOUTS SEE DWG NO. 121339-01-000

FIRST USED

14 P-SERIES

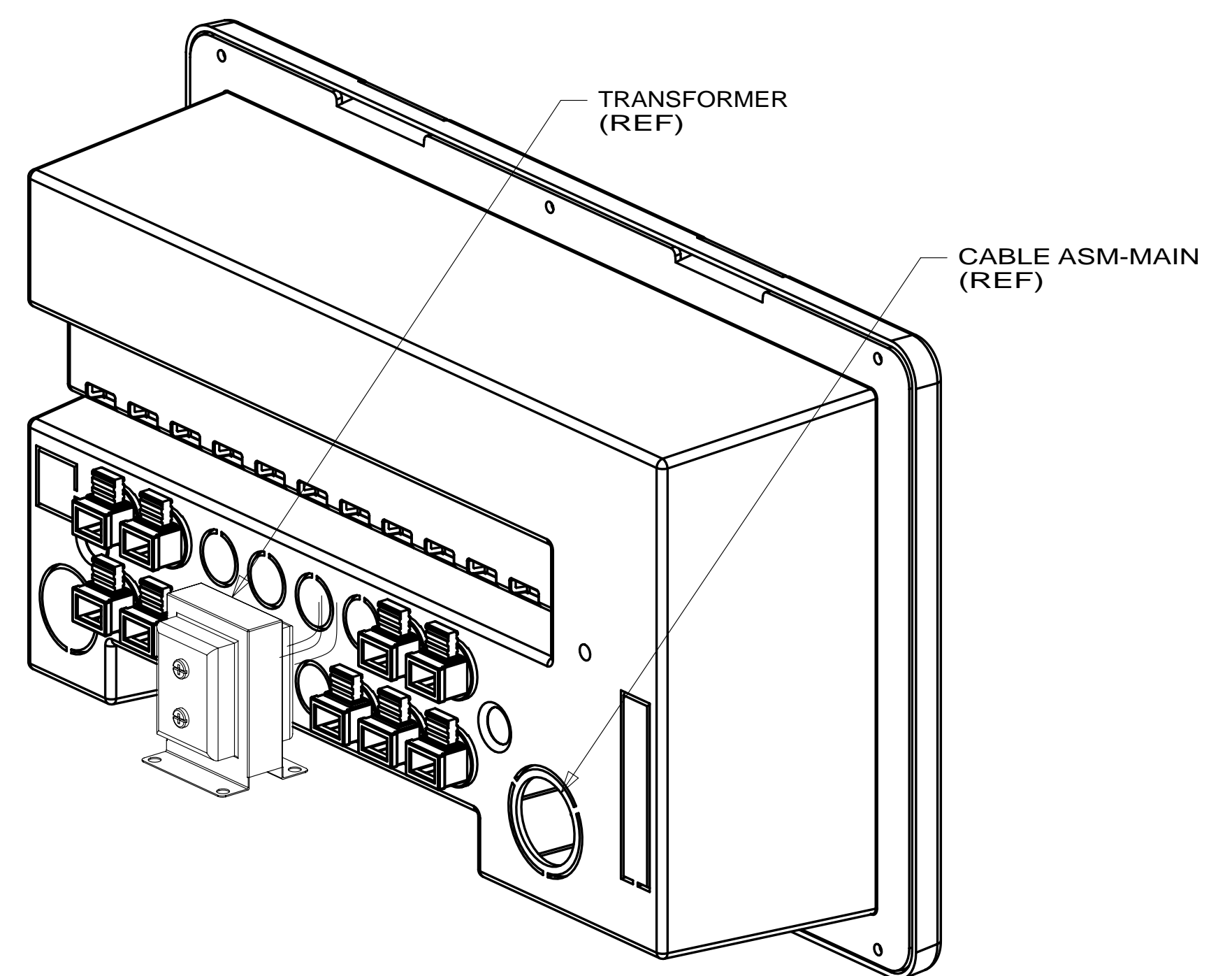
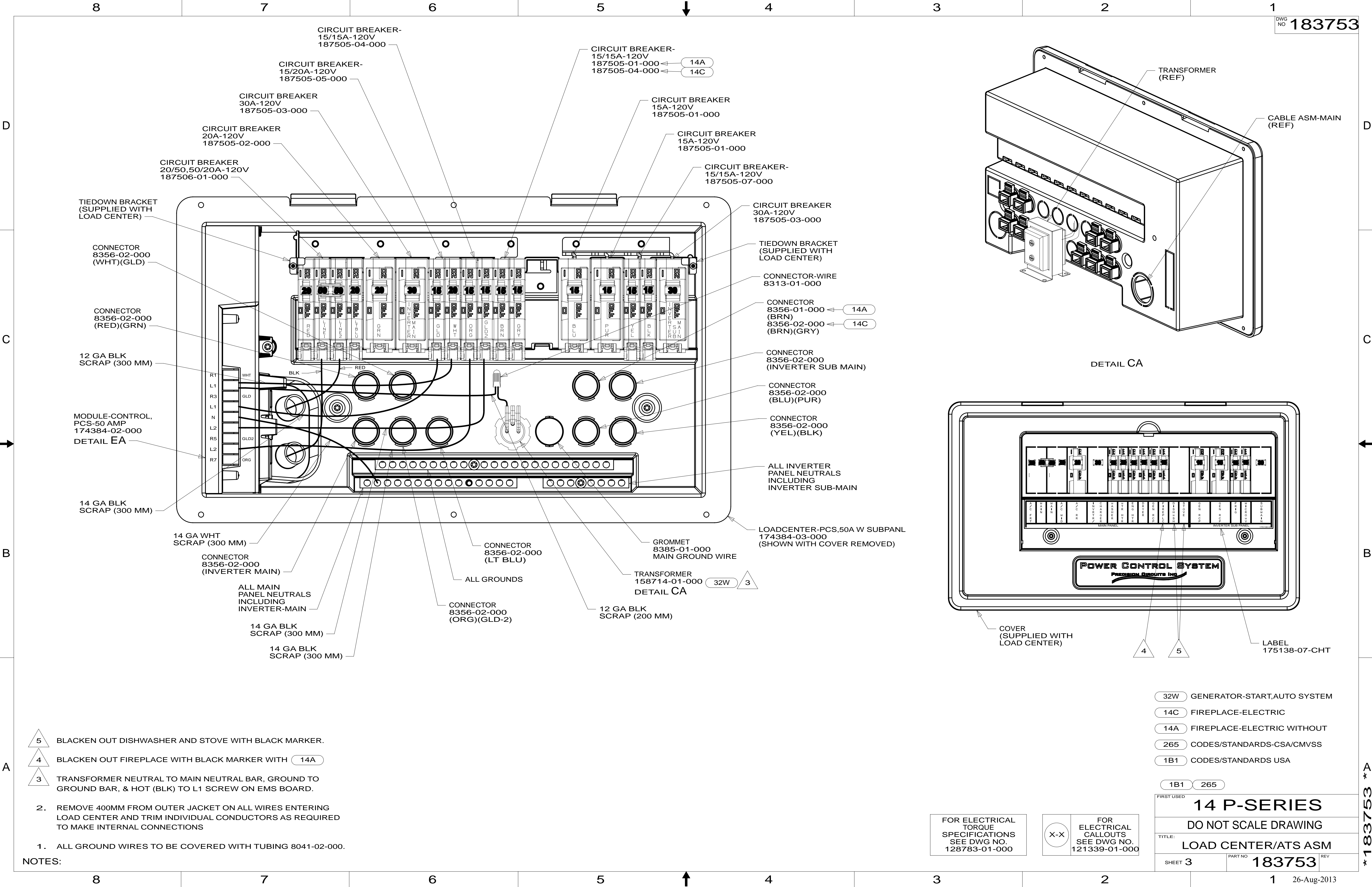
DO NOT SCALE DRAWING

TITLE: **LOAD CENTER/ATS ASM**

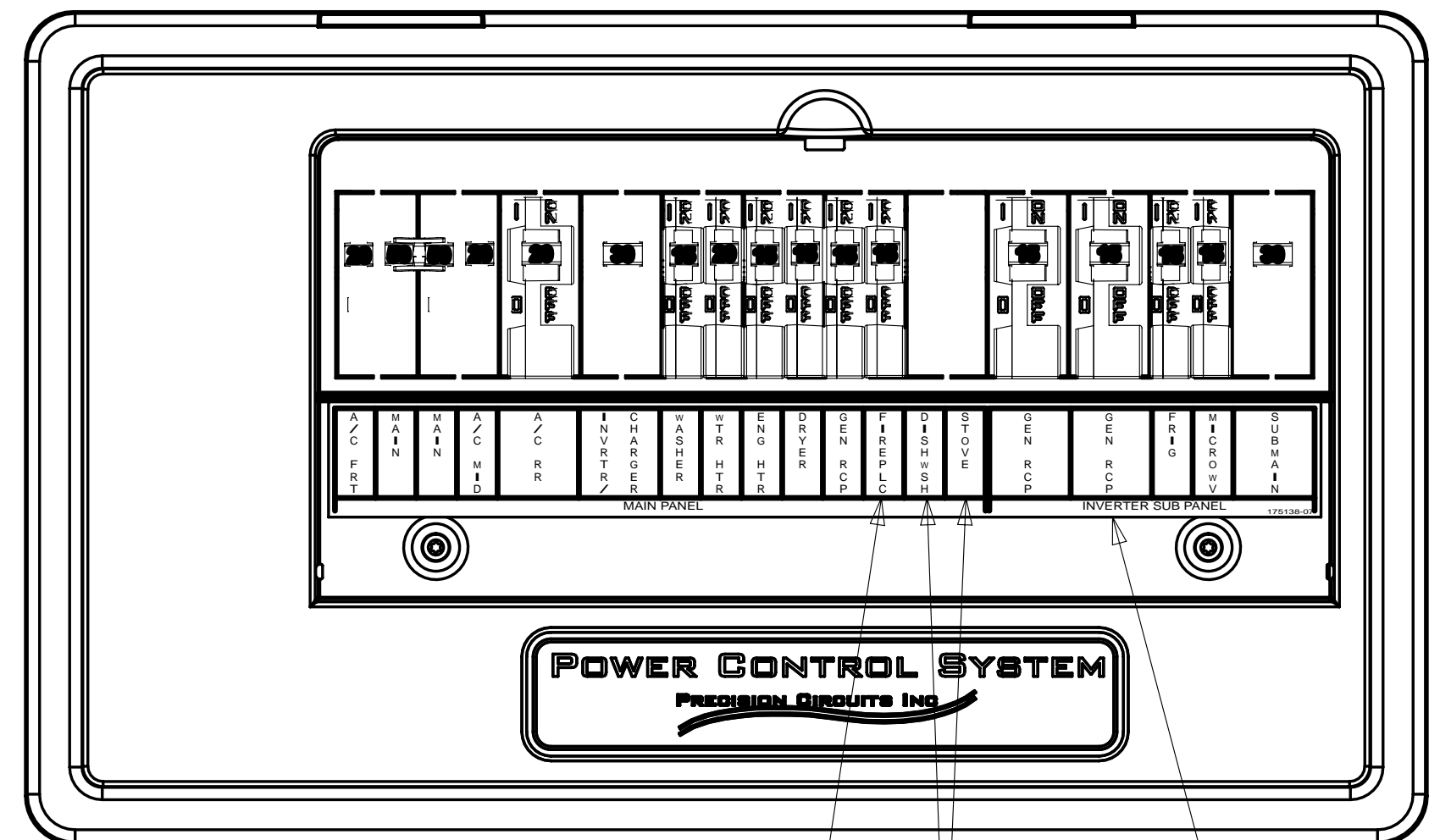
SHEET 2 PART NO. **183753** REV

26-Aug-2013

* 183753 *



DETAIL CA



COVER (SUPPLIED WITH LOAD CENTER)

LABEL 175138-07-CHT

- 5 BLACKEN OUT DISHWASHER AND STOVE WITH BLACK MARKER.
- 4 BLACKEN OUT FIREPLACE WITH BLACK MARKER WITH 14A
- 3 TRANSFORMER NEUTRAL TO MAIN NEUTRAL BAR, GROUND TO GROUND BAR, & HOT (BLK) TO L1 SCREW ON EMS BOARD.

- 2. REMOVE 400MM FROM OUTER JACKET ON ALL WIRES ENTERING LOAD CENTER AND TRIM INDIVIDUAL CONDUCTORS AS REQUIRED TO MAKE INTERNAL CONNECTIONS
- 1. ALL GROUND WIRES TO BE COVERED WITH TUBING 8041-02-000.

NOTES:

- 32W GENERATOR-START,AUTO SYSTEM
- 14C FIREPLACE-ELECTRIC
- 14A FIREPLACE-ELECTRIC WITHOUT
- 265 CODES/STANDARDS-CSA/CMVSS
- 1B1 CODES/STANDARDS USA

1B1 265

FIRST USED 14 P-SERIES

DO NOT SCALE DRAWING

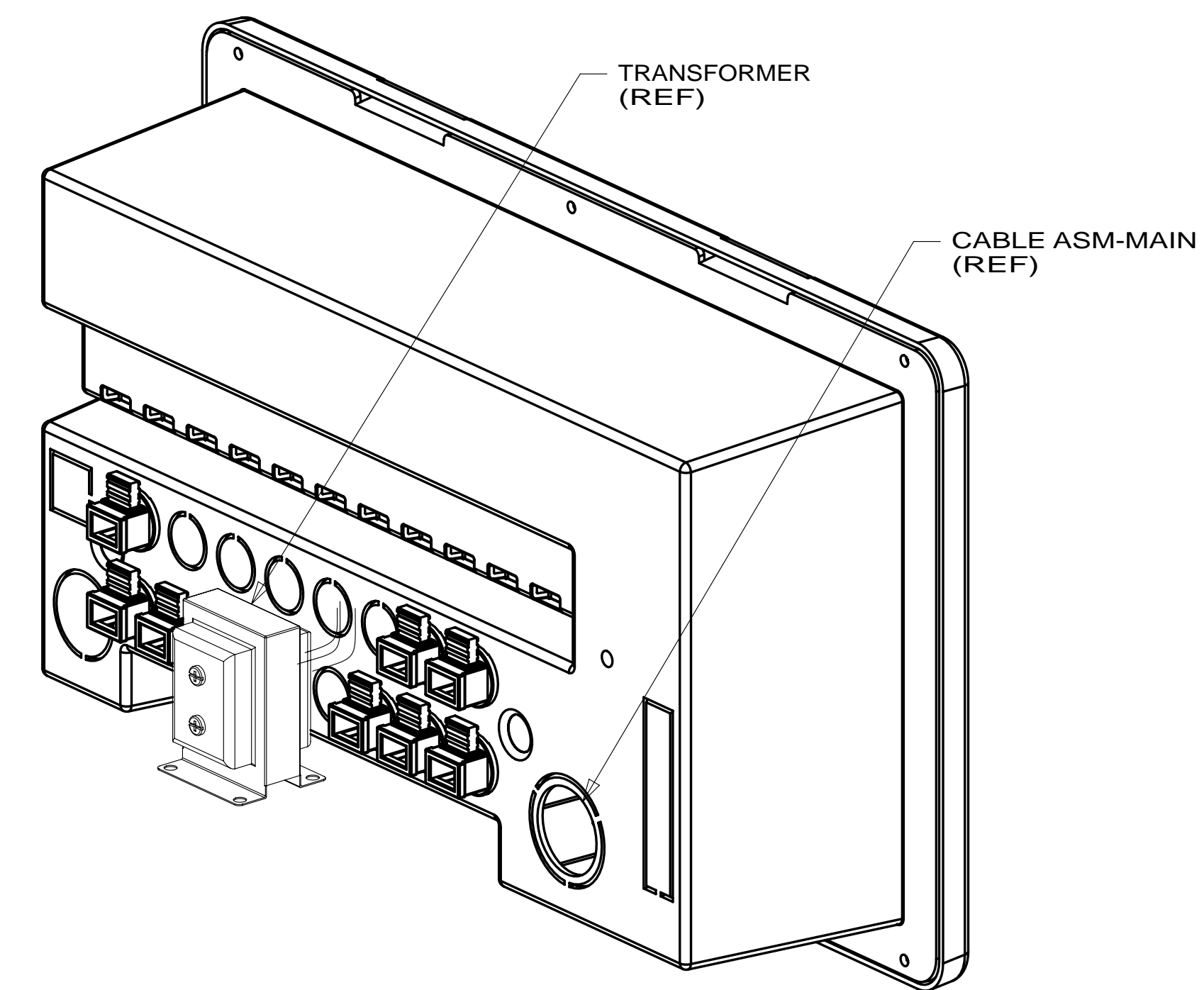
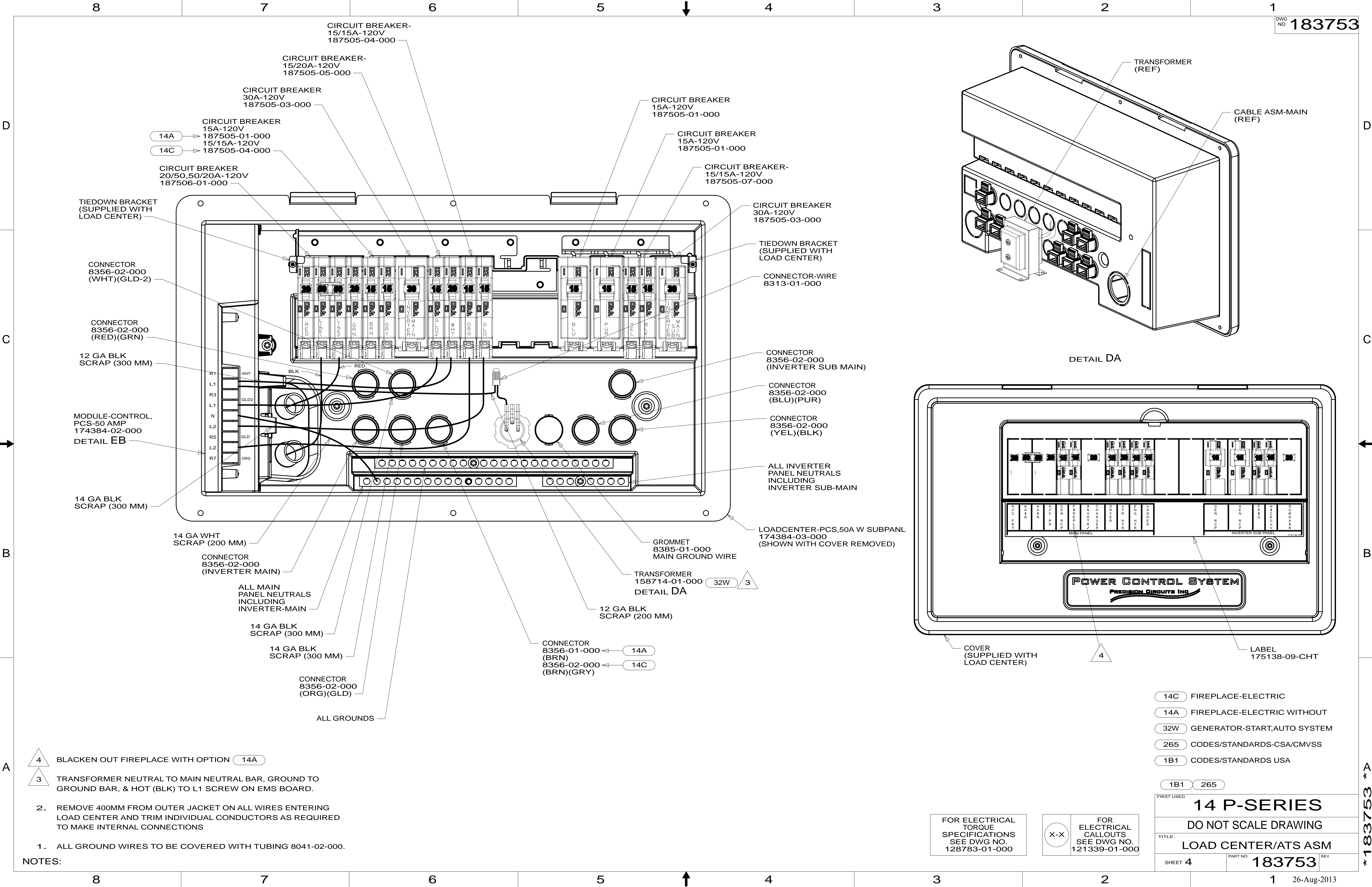
TITLE: LOAD CENTER/ATS ASM

SHEET 3 PART NO 183753 REV

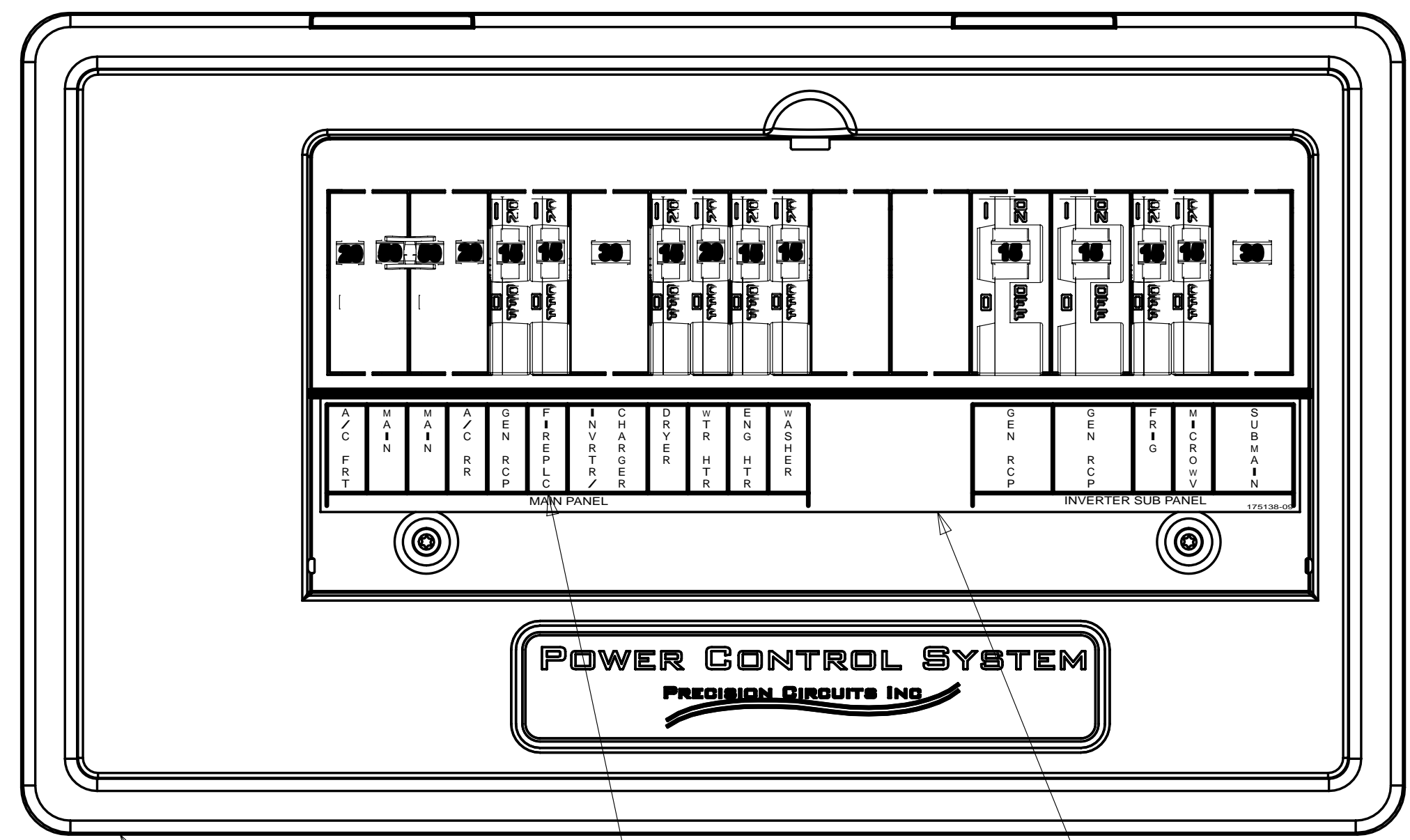
FOR ELECTRICAL TORQUE SPECIFICATIONS SEE DWG NO. 128783-01-000

FOR ELECTRICAL CALLOUTS SEE DWG NO. 121339-01-000

* 183753 *



DETAIL DA



COVER (SUPPLIED WITH LOAD CENTER) LABEL 175138-09-CHT

- 14C FIREPLACE-ELECTRIC
- 14A FIREPLACE-ELECTRIC WITHOUT
- 32W GENERATOR-START,AUTO SYSTEM
- 265 CODES/STANDARDS-CSA/CMVSS
- 1B1 CODES/STANDARDS USA

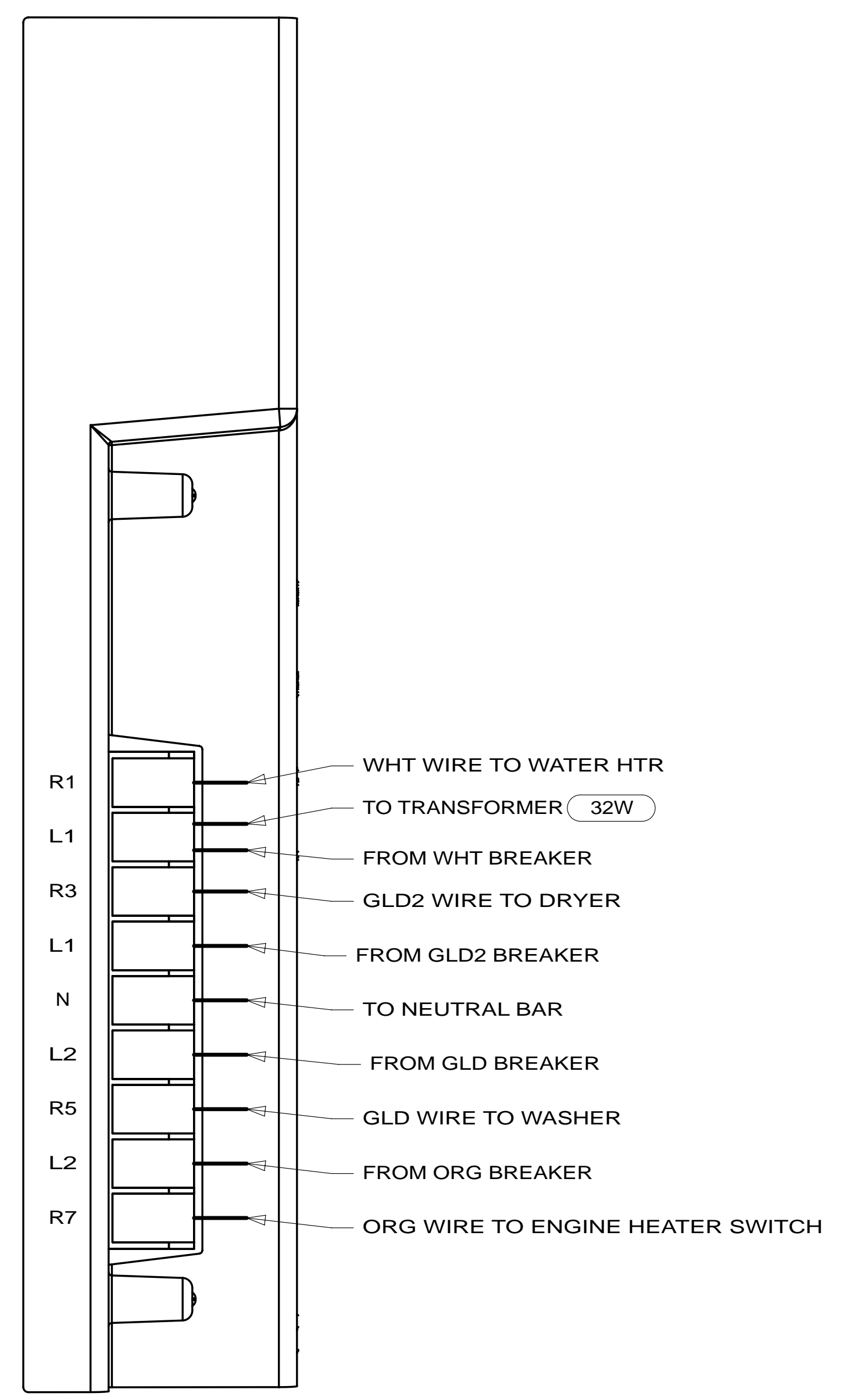
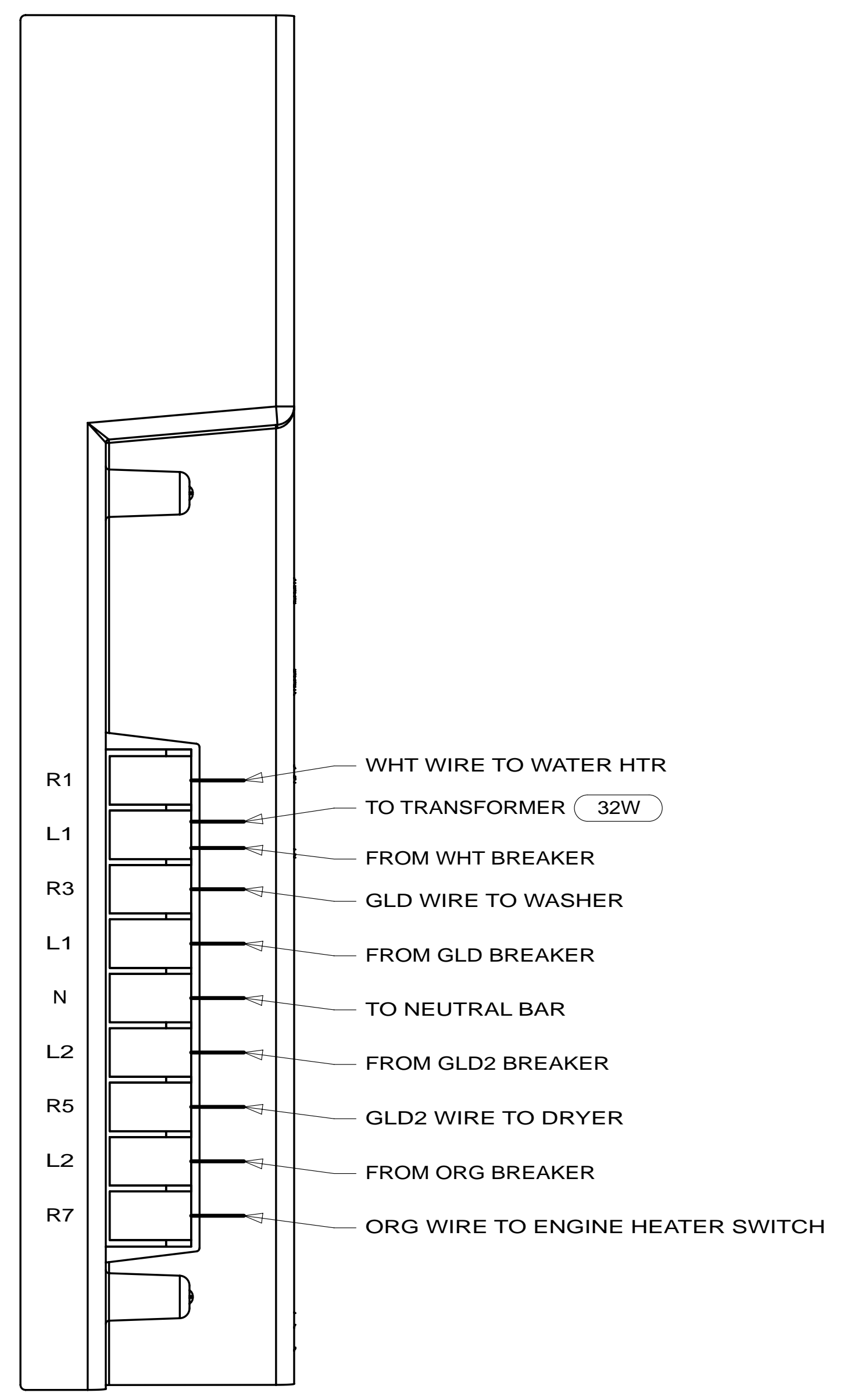
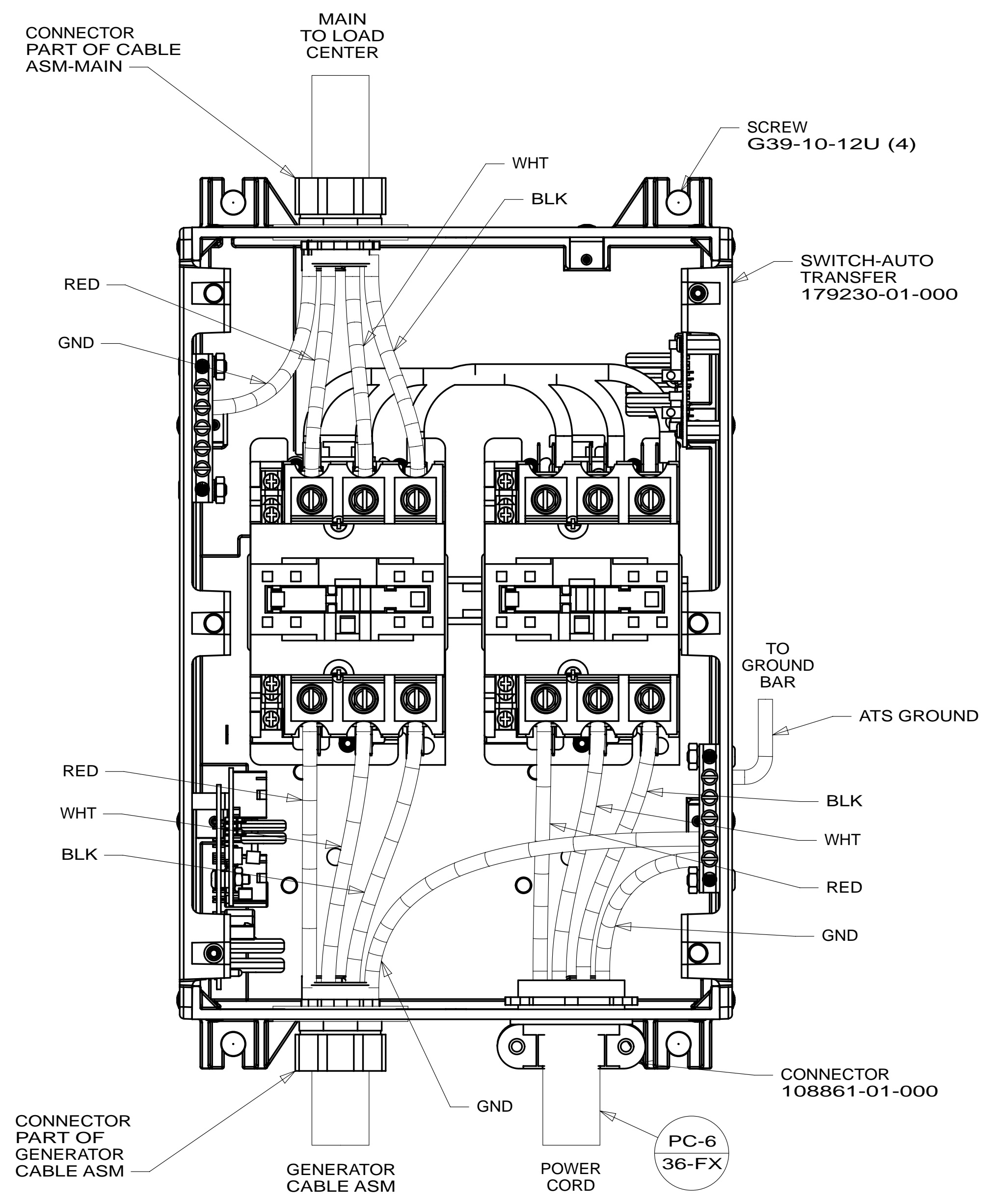
| | |
|-----------------------------------|---------------------------|
| 1B1 | 265 |
| FIRST USED | |
| 14 P-SERIES | |
| DO NOT SCALE DRAWING | |
| TITLE: LOAD CENTER/ATS ASM | |
| SHEET 4 | PART NO 183753 REV |

FOR ELECTRICAL TORQUE SPECIFICATIONS SEE DWG NO. 128783-01-000

FOR ELECTRICAL CALLOUTS SEE DWG NO. 121339-01-000

- NOTES:**
1. ALL GROUND WIRES TO BE COVERED WITH TUBING 8041-02-000.
 2. REMOVE 400MM FROM OUTER JACKET ON ALL WIRES ENTERING LOAD CENTER AND TRIM INDIVIDUAL CONDUCTORS AS REQUIRED TO MAKE INTERNAL CONNECTIONS

* 183753 *



DETAIL EA

DETAIL EB

- 32W GENERATOR-START,AUTO SYSTEM
- 265 CODES/STANDARDS-CSA/CMVSS
- 1B1 CODES/STANDARDS USA

| | |
|-----------------------------------|----------------------------|
| FIRST USED | |
| 14 P-SERIES | |
| DO NOT SCALE DRAWING | |
| TITLE: LOAD CENTER/ATS ASM | |
| SHEET 5 | PART NO. 183753 REV |
| 26-Aug-2013 | |

FOR ELECTRICAL TORQUE SPECIFICATIONS SEE DWG NO. 128783-01-000

FOR ELECTRICAL CALLOUTS SEE DWG NO. 121339-01-000

*183753 *A