



**DANGER**

**Danger of electrical shock, burns or death.** Always remove all power sources before attempting any repair, service or diagnostic work. Power can be present from shore power, generator, inverter or battery. All power sources must be disabled and secured before performing any service.

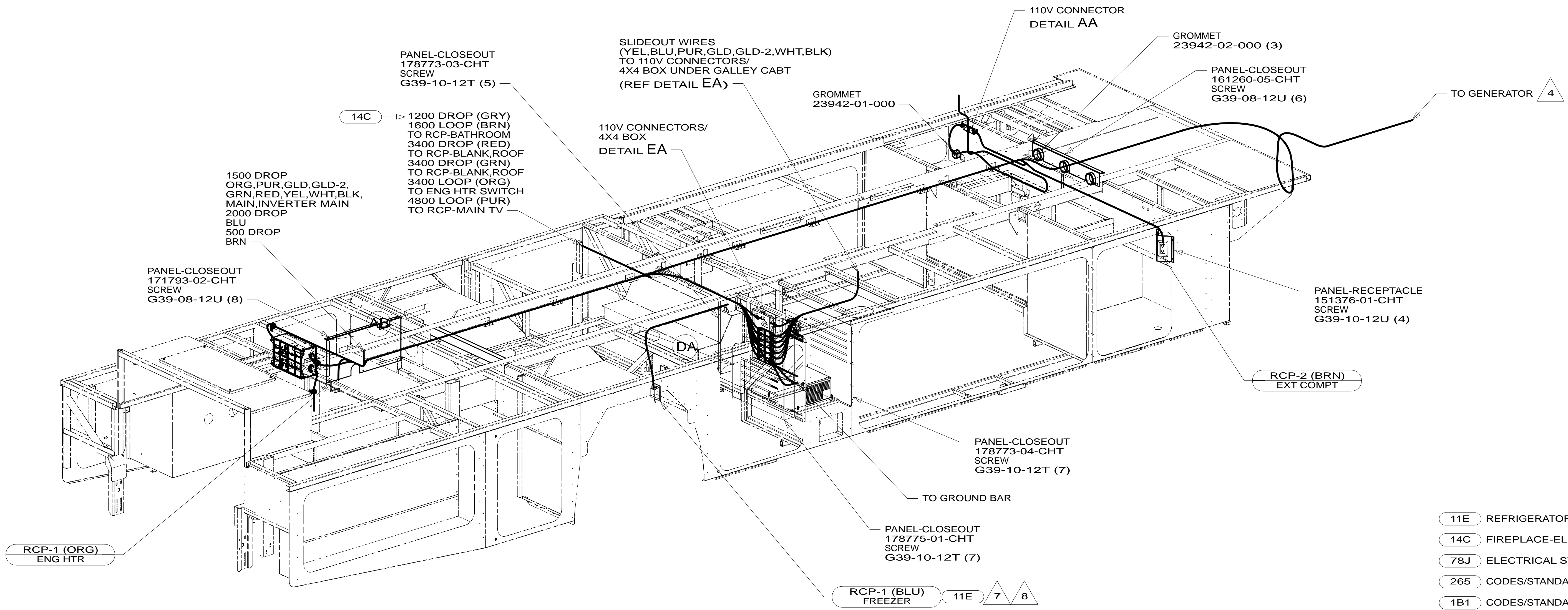
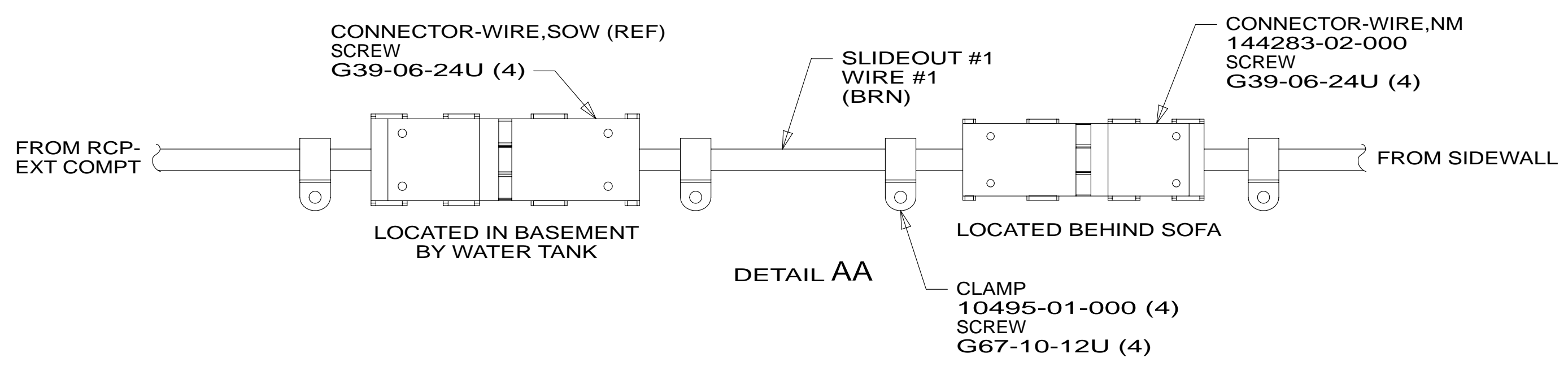


**CAUTION**

If you lack the skills, tools or equipment to perform diagnostic or repair work leave such work to an authorized Winnebago Industries dealer or other qualified shop.

DRAWING NO.	FEATURES
183750-01	-----
183750-12	1B1 78J
183750-16	265 78J

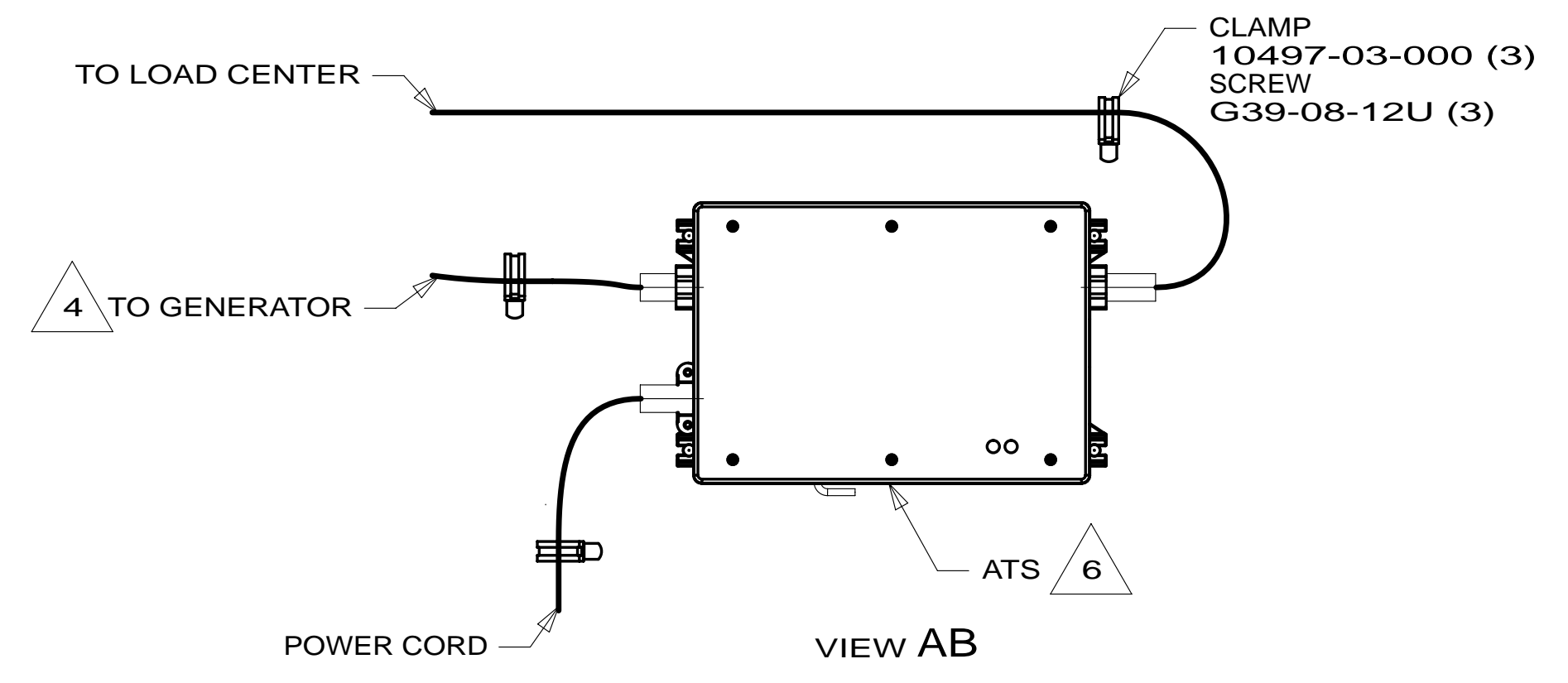
RELEASE	REV DATE	DWG NO	183750
REV ZONE	REVISION RECORD	DATE	DFT-ORIG



- 11E REFRIGERATOR/FREEZER PORTABL
- 14C FIREPLACE-ELECTRIC
- 78J ELECTRICAL SYSTEM-50 AMP
- 265 CODES/STANDARDS-CSA/CMVSS
- 1B1 CODES/STANDARDS USA

- 8 SEE WIRING INSTL-BODY, 12V FOR ADDITIONAL INFORMATION.
- 7 COIL EXCESS WIRE HERE WITHOUT 11E
- 6 SEE LOAD CENTER/ATS ASM FOR ADDITIONAL INFORMATION.
- 5 TO ABOVE FLOOR.
- 4 SEE GENERATOR INSTL FOR ADDITIONAL INFORMATION.

3. WIRES THAT REST ON WIRE TRAYS ARE TO BE TIED DOWN WITH WIRE TIE 8343-04-000.
2. CLAMP TO FLOOR SUPPORT TUBES AS NECESSARY WITH CLAMP 10497-01-000.
1. ALL WIRES TO BE SECURED WITH CLAMP 10495 OR 10497 OR WIRE TIE 8343 OR 108046 EVERY 600 MM. USE SCREW G67-XX-XXX OR G56-XX-XXX AS APPROPRIATE FOR INSTALLATION.



FOR ELECTRICAL TORQUE SPECIFICATIONS SEE DWG NO. 128783-01-000

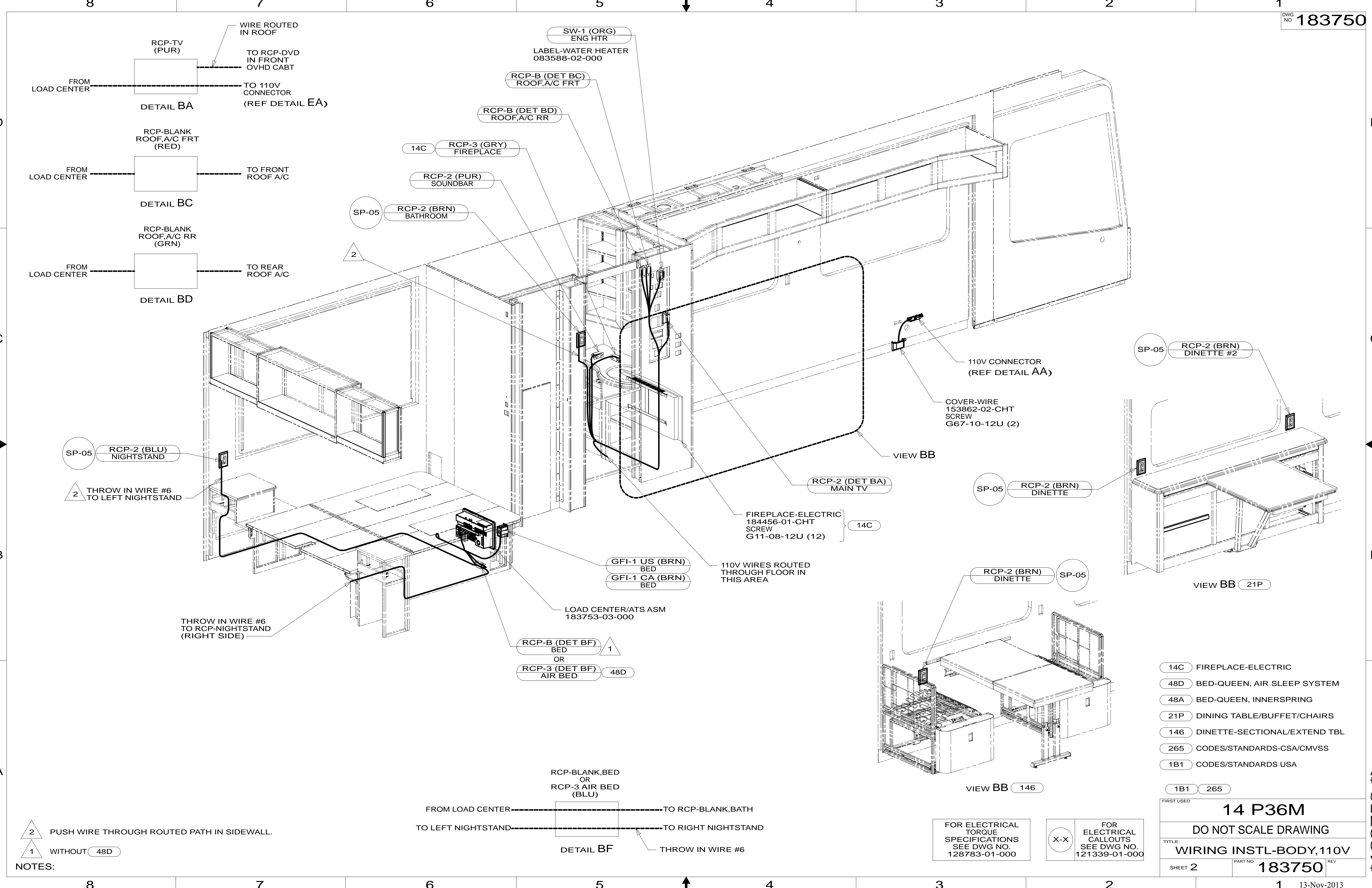
FOR ELECTRICAL CALLOUTS SEE DWG NO. 121339-01-000

**WINNEBAGO** COPYRIGHT 2013 WINNEBAGO INDUSTRIES, INC.

DFT-ORIG	ORIG. DATE
CHKR	ALL DIMENSIONS ARE IN MILLIMETERS
P.E.	FIRST USED
M.E.	14 P36M
DSNR	MATERIAL:
UNSPECIFIED TOLERANCES ARE:	
WHOLE DIM (X)	: 3
ONE-PLACE (X.X)	: 1.5
TWO-PLACE (X.XX)	: 0.50
ANGLE	: 1°
THIRD ANGLE PROJECTION	
DO NOT SCALE DRAWING	REFER TO ES0018 FOR FASTENER TIGHTENING GUIDELINES
TITLE: WIRING INSTL-BODY, 110V	
SHEET 1 OF 6	PART NO 183750 REV

REF: 1 13-Nov-2013

\* 183750 \*



8 7 6 5 4 3 2 1

D

C

B

A

2 PUSH WIRE THROUGH ROUTED PATH IN SIDEWALL.

1 WITHOUT 48D

NOTES:

FROM LOAD CENTER TO RCP-BLANK, BATH

TO LEFT NIGHTSTAND TO RIGHT NIGHTSTAND

THROW IN WIRE #6

DETAIL BF

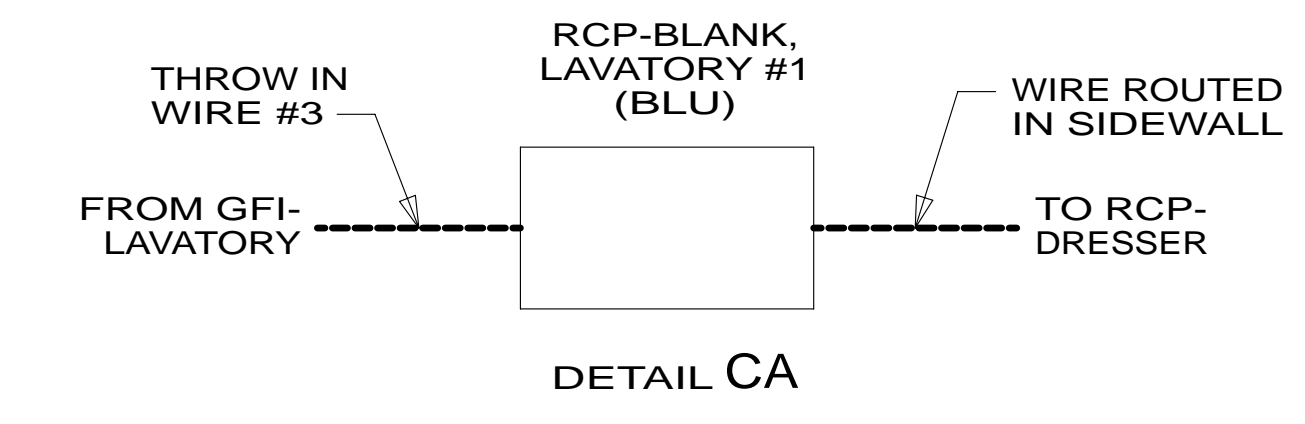
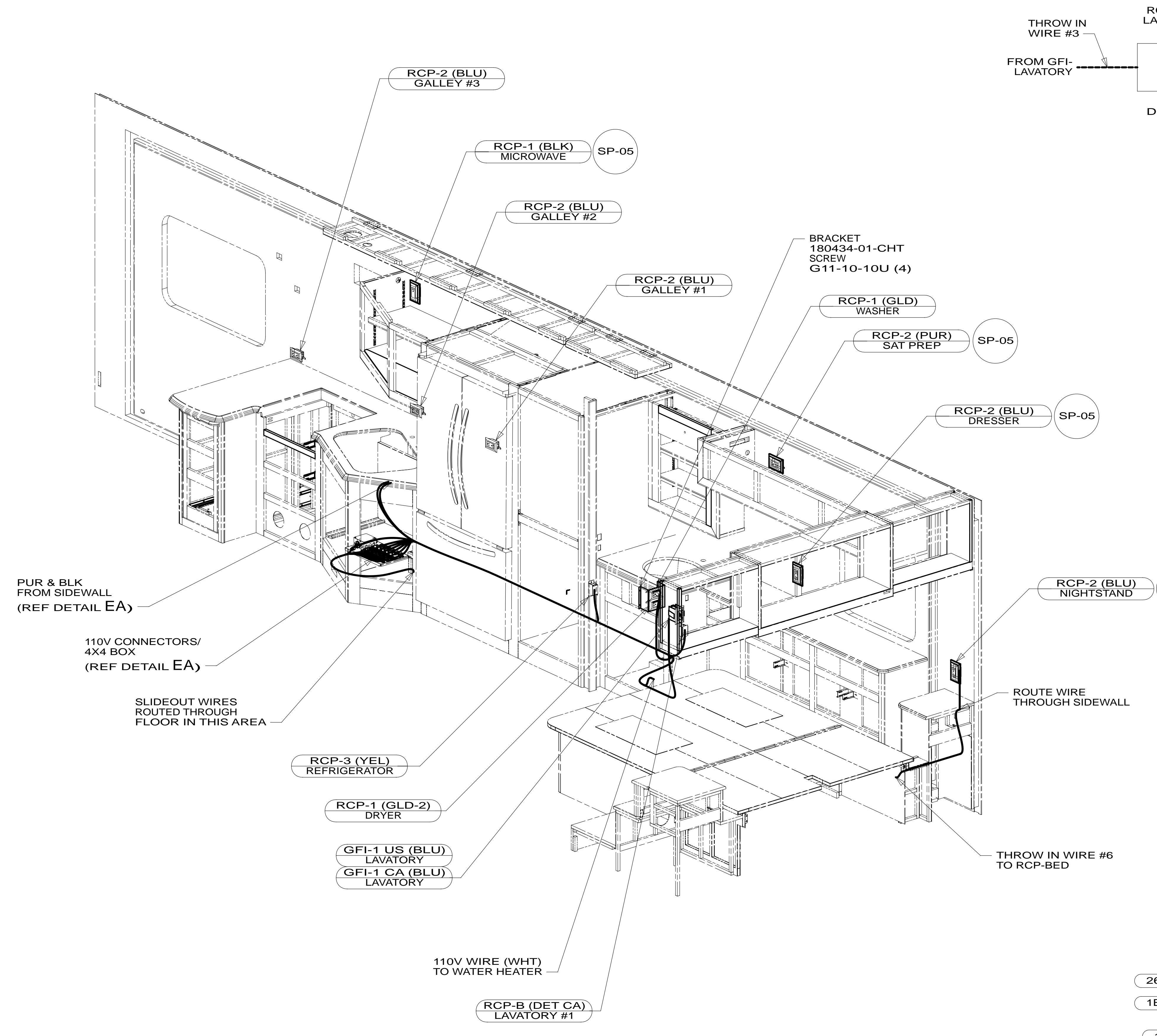
FOR ELECTRICAL TORQUE SPECIFICATIONS SEE DWG NO. 128783-01-000

FOR ELECTRICAL CALLOUTS SEE DWG NO. 121339-01-000

- 14C FIREPLACE-ELECTRIC
- 48D BED-QUEEN, AIR SLEEP SYSTEM
- 48A BED-QUEEN, INNERSPRING
- 21P DINING TABLE/BUFFET/CHAIRS
- 146 DINETTE-SECTIONAL/EXTEND TBL
- 265 CODES/STANDARDS-CSA/CMVSS
- 1B1 CODES/STANDARDS USA

FIRST USED	
<b>14 P36M</b>	
<b>DO NOT SCALE DRAWING</b>	
<b>TITLE: WIRING INSTL-BODY, 110V</b>	
SHEET 2	PART NO <b>183750</b> REV
13-Nov-2013	

\* 183750 \* A



- 265 CODES/STANDARDS-CSA/CMVSS
- 1B1 CODES/STANDARDS USA
- 1B1 265

FIRST USED	
<b>14 P36M</b>	
DO NOT SCALE DRAWING	
TITLE: <b>WIRING INSTL-BODY, 110V</b>	
SHEET 3	PART NO <b>183750</b> REV

FOR ELECTRICAL TORQUE SPECIFICATIONS SEE DWG NO. 128783-01-000

X-X FOR ELECTRICAL CALLOUTS SEE DWG NO. 121339-01-000

\* 183750 \* A

8

7

6

5

4

3

2

1

D

D

C

C

B

B

A

8

7

6

5

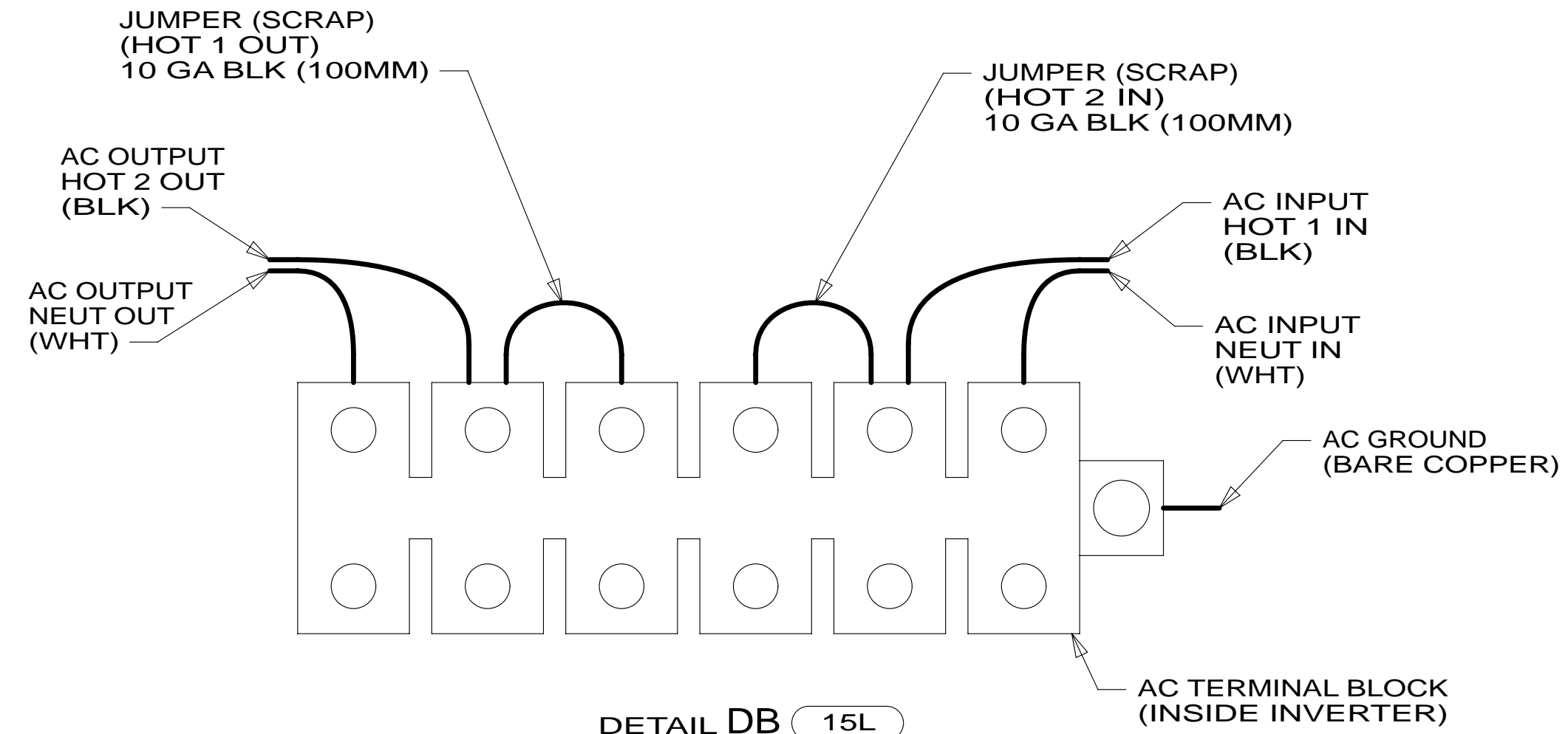
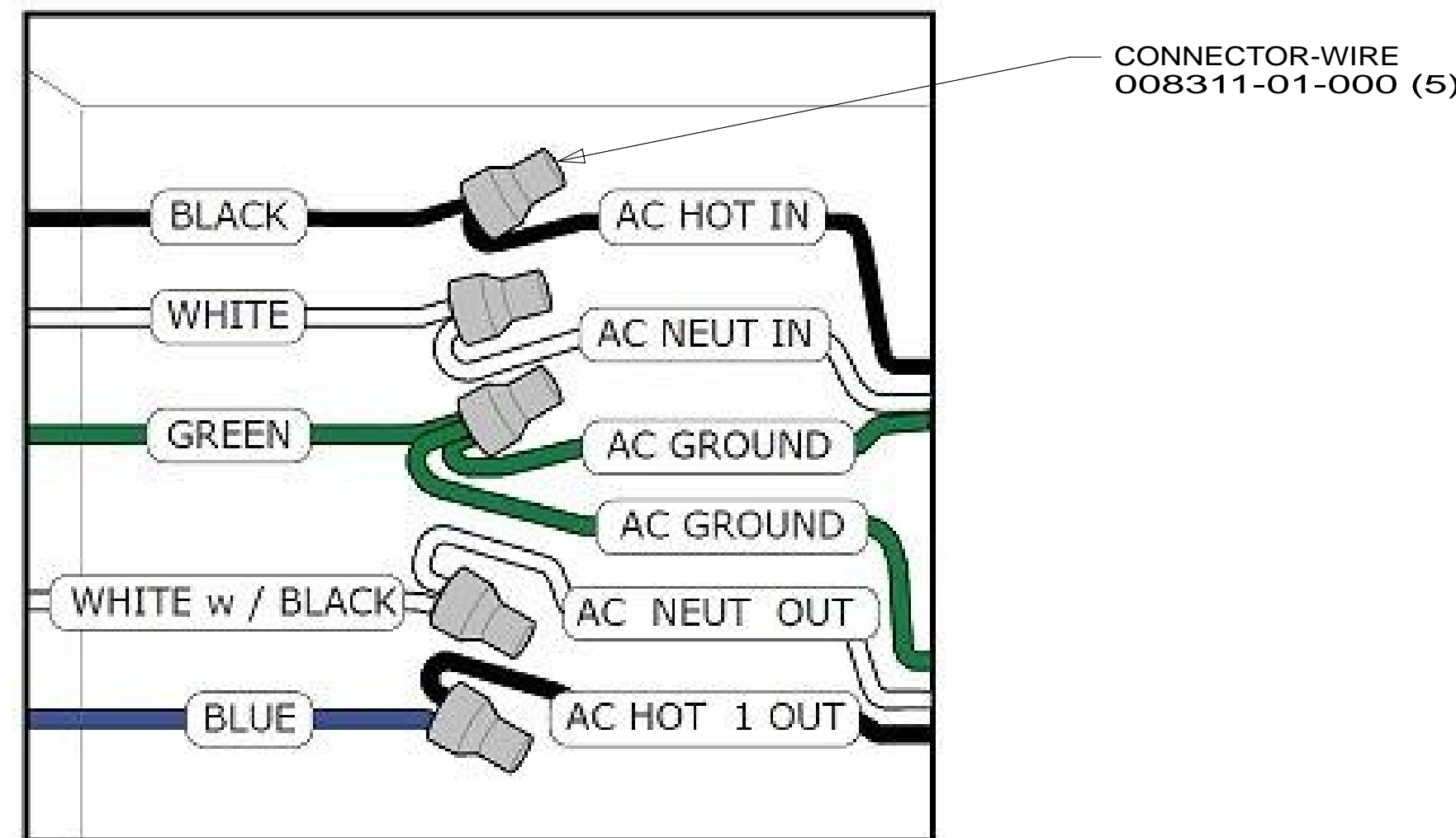
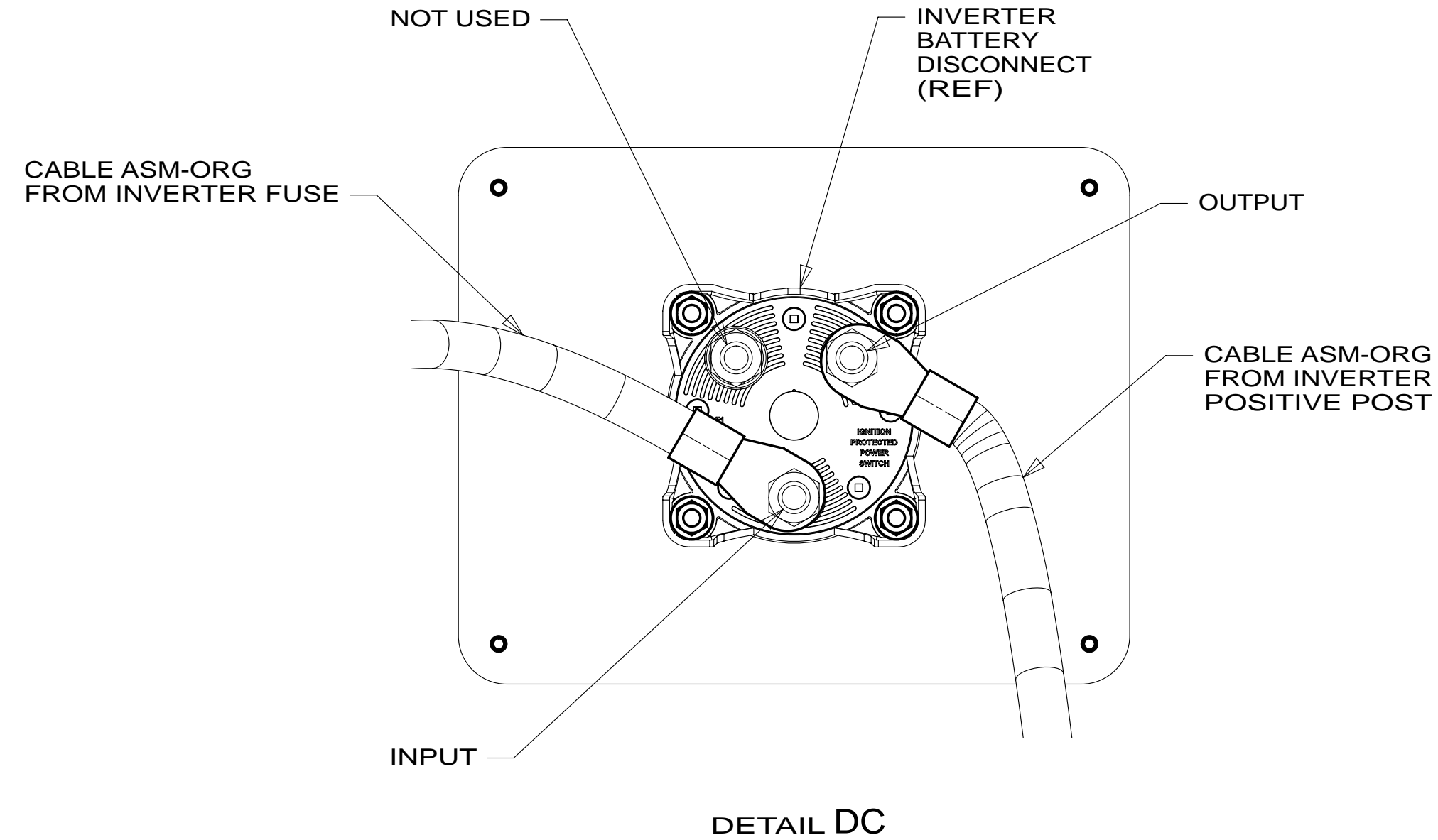
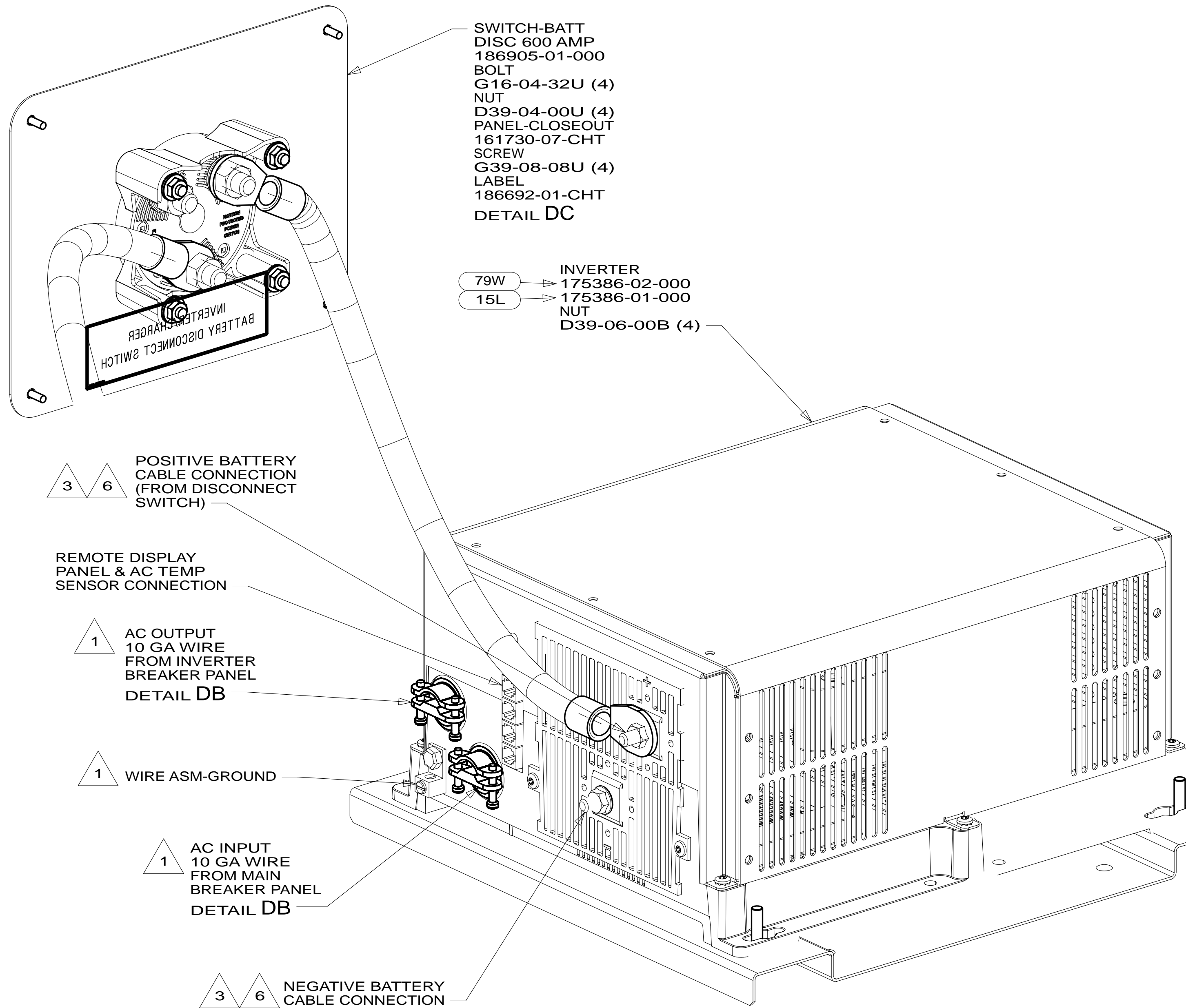
4

3

2

1

13-Nov-2013



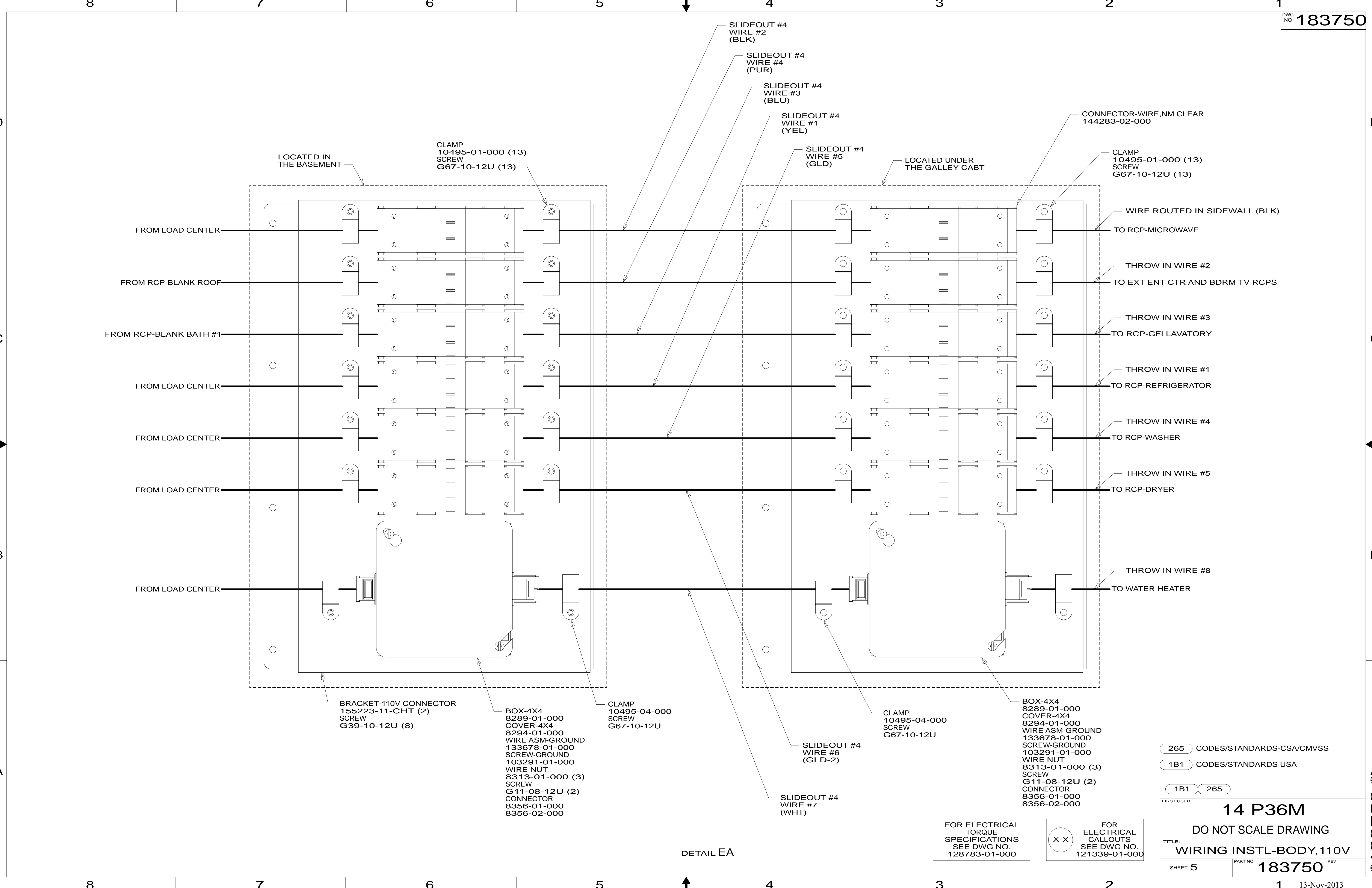
- NOTES:
- 7 BRACKET IS LOCATED BY HOLES ON PANEL.
  - 6 DO NOT USE POWER/AIR TOOL TO INSTALL NUT. TORQUE TO 10-12 FT LBS.
  - 5 CABLES PART OF WIRE ASM-COACH.
  - 4 SEE INVERTER/CHARGER OWNER'S MANUAL FOR ADDITIONAL INFORMATION.
  - 3 SEE WIRING INSTL-CHASSIS FOR ADDITIONAL INFORMATION.
  - 2 USED WITHOUT 13X
  - 1 SEE LOAD CENTER/ATS ASM FOR ADDITIONAL INFORMATION.

FOR ELECTRICAL TORQUE SPECIFICATIONS SEE DWG NO. 128783-01-000

X-X FOR ELECTRICAL CALLOUTS SEE DWG NO. 121339-01-000

79W	REFRIGERATOR-4 DOOR
15L	RESIDENTIAL REFRIGERATOR PKG
265	CODES/STANDARDS-CSA/CMVSS
1B1	CODES/STANDARDS USA
1B1	265
FIRST USED	
<b>14 P36M</b>	
DO NOT SCALE DRAWING	
TITLE: <b>WIRING INSTL-BODY, 110V</b>	
SHEET 4	PART NO <b>183750</b> REV
13-Nov-2013	

\* 183750 \*



DETAIL EA

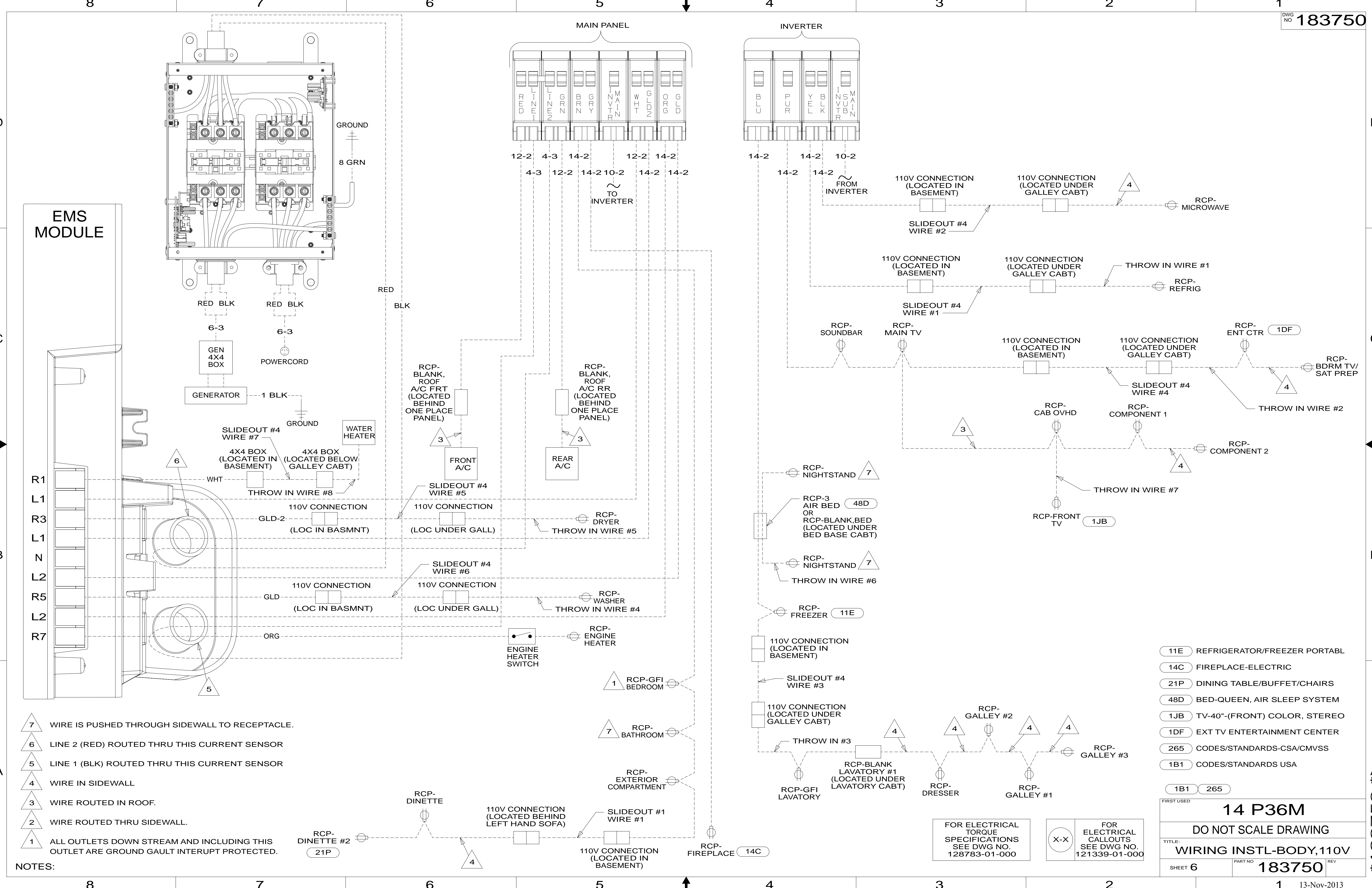
FOR ELECTRICAL TORQUE SPECIFICATIONS SEE DWG NO. 128783-01-000

FOR ELECTRICAL CALLOUTS SEE DWG NO. 121339-01-000

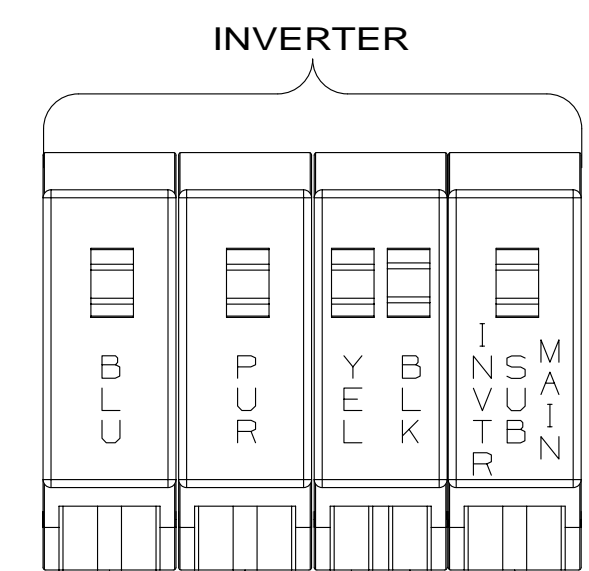
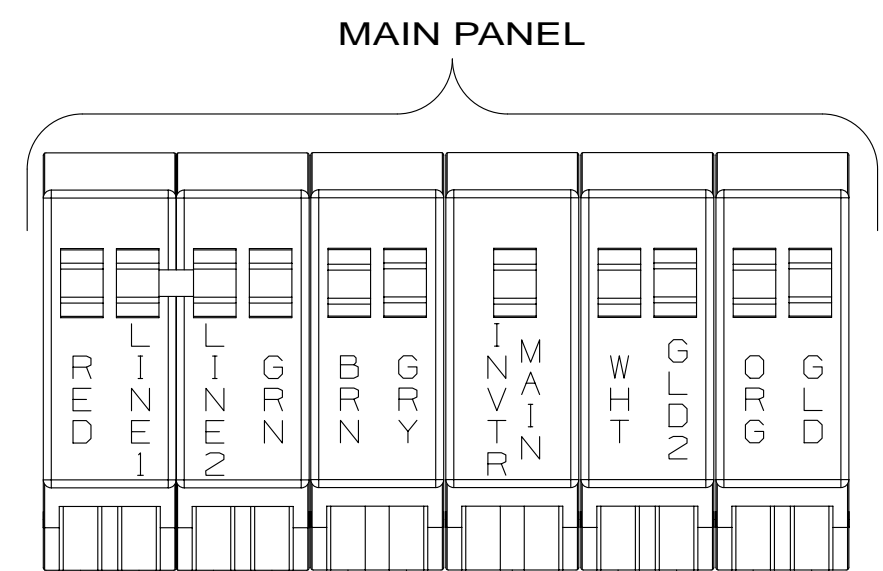
- 265 CODES/STANDARDS-CSA/CMVSS
- 1B1 CODES/STANDARDS USA
- 1B1 265

FIRST USED		<b>14 P36M</b>	
DO NOT SCALE DRAWING			
TITLE: <b>WIRING INSTL-BODY,110V</b>			
SHEET 5	PART NO	<b>183750</b>	REV
			13-Nov-2013

\* 183750 \* A



EMS MODULE



- NOTES:
- 7 WIRE IS PUSHED THROUGH SIDEWALL TO RECEPTACLE.
  - 6 LINE 2 (RED) ROUTED THRU THIS CURRENT SENSOR
  - 5 LINE 1 (BLK) ROUTED THRU THIS CURRENT SENSOR
  - 4 WIRE IN SIDEWALL
  - 3 WIRE ROUTED IN ROOF.
  - 2 WIRE ROUTED THRU SIDEWALL.
  - 1 ALL OUTLETS DOWN STREAM AND INCLUDING THIS OUTLET ARE GROUND GAULT INTERRUPT PROTECTED.

- 11E REFRIGERATOR/FREEZER PORTABL
- 14C FIREPLACE-ELECTRIC
- 21P DINING TABLE/BUFFET/CHAIRS
- 48D BED-QUEEN, AIR SLEEP SYSTEM
- 1JB TV-40"-(FRONT) COLOR, STEREO
- 1DF EXT TV ENTERTAINMENT CENTER
- 265 CODES/STANDARDS-CSA/CMVSS
- 1B1 CODES/STANDARDS USA

FOR ELECTRICAL TORQUE SPECIFICATIONS SEE DWG NO. 128783-01-000

FOR ELECTRICAL CALLOUTS SEE DWG NO. 121339-01-000

FIRST USED

**14 P36M**

DO NOT SCALE DRAWING

TITLE: **WIRING INSTL-BODY, 110V**

SHEET 6 PART NO **183750** REV

13-Nov-2013

\* 183750 \* A