



DANGER

Danger of electrical shock, burns or death. Always remove all power sources before attempting any repair, service or diagnostic work. Power can be present from shore power, generator, inverter or battery. All power sources must be disabled and secured before performing any service.



CAUTION

If you lack the skills, tools or equipment to perform diagnostic or repair work leave such work to an authorized Winnebago Industries dealer or other qualified shop.

8

7

6

5

4

3

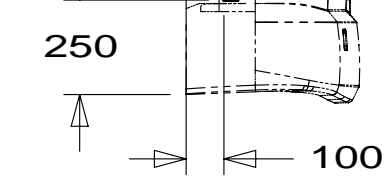
2

1

LAMP ASM-
SIDEMARKER,AMBER
184949-02-000
SCREW
G11-08-12U (2)

LEXT-3

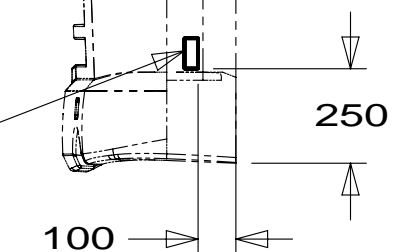
REFLECTOR
106646-02-000



LAMP-MARKER,BASE
111102-01-000
LAMP-MARKER,LENS,AMBER
111102-02-000
SCREW
G11-08-12U (EXT)(2)
CONNECTOR
58028-01-000 (4)

LEXT-3

REFLECTOR
106646-02-000



LAMP-MARKER,BASE
111102-01-000
LAMP-MARKER,LENS,AMBER
111102-02-000
SCREW
G11-08-12U (EXT)(2)
CONNECTOR
58028-01-000 (4)

LAMP ASM-
SIDEMARKER,AMBER
184949-02-000
SCREW
G11-08-12U (2)

265 CODES/STANDARDS-CSA/CMVSS
1B1 CODES/STANDARDS USA

1B1 265



DTR	ORIG. DATE
CHKR	ALL DIMENSIONS ARE IN MILLIMETERS
P.E.	
M.E.	FIRST USED
DSNR	14 P-SERIES
UNSPECIFIED TOLERANCES ARE:	
WHOLE DIM (X)	: 3
ONE-PLACE (X.X)	: 1.5
TWO-PLACE (X.XX)	: 0.50
ANGLE	: 1°
THIRD ANGLE PROJECTION	
DO NOT SCALE DRAWING	REFER TO ES0018 FOR FASTENER TIGHTENING GUIDELINES
TITLE: WIRING INSTL-EXTERIOR LAMPS	
SHEET 1 OF 3	PART NO 183747 REV

NOTES:
2 INSTALL AFTER PAINT.
1 REMOVE PAPER BACKING FROM REFLECTOR AND PREP APPLICATION SURFACE WITH ISOPROPYL ALCOHOL WIPE BEFORE INSTALLATION.

FOR ELECTRICAL TORQUE SPECIFICATIONS SEE DWG NO. 128783-01-000

FOR ELECTRICAL CALLOUTS SEE DWG NO. 121339-01-000

8

7

6

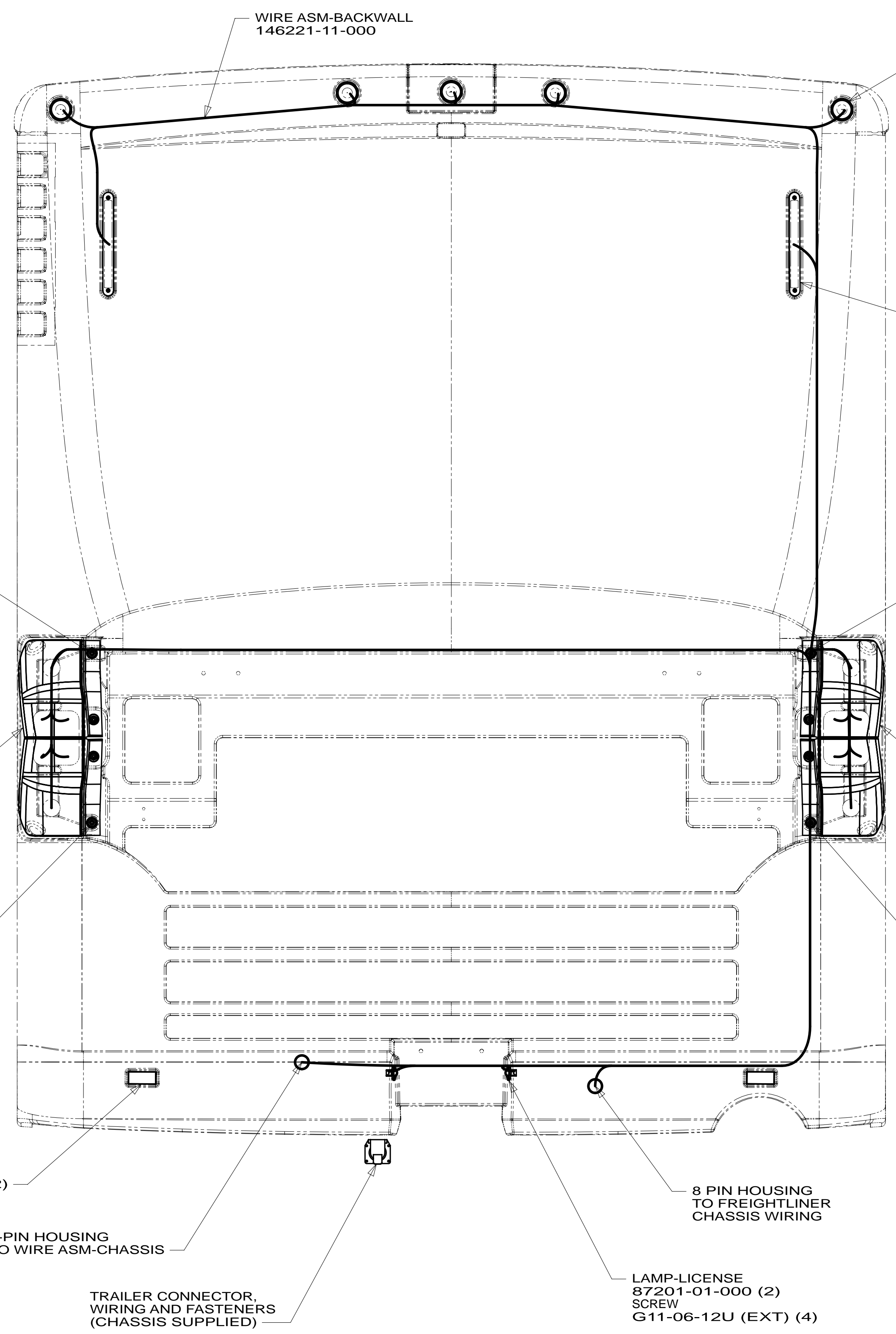
5

4

3

2

* 183747 *



WIRE ASM-BACKWALL
146221-11-000

LAMP ASM-CLEARANCE,RED
138996-02-000 (5)
BRACKET-LAMP,CLEARANCE
138996-03-000 (5)
SCREW
G39-08-16U (EXT) (10)

LAMP-THIRD BRAKE
151076-01-000 (2)
SCREW
G39-06-16U (4)

SCREW
G50-04-16U
WASHER
E13-14-00U

SCREW
G50-04-16U
WASHER
E13-14-00U

2 LAMP ASM-REAR CAP
181209-01-XXX
NUT-HEX HEAD W/WASHER
131377-01-000 (2)

LAMP ASM-REAR CAP
181209-01-XXX
NUT-HEX HEAD W/WASHER
131377-01-000 (2) 2

SCREW
G50-04-16U
WASHER
E13-14-00U

SCREW
G50-04-16U
WASHER
E13-14-00U

1 REFLECTOR
106646-02-000 (2)

8 PIN HOUSING
TO FREIGHTLINER
CHASSIS WIRING

2-PIN HOUSING
TO WIRE ASM-CHASSIS

TRAILER CONNECTOR,
WIRING AND FASTENERS
(CHASSIS SUPPLIED)

LAMP-LICENSE
87201-01-000 (2)
SCREW
G11-06-12U (EXT) (4)

265 CODES/STANDARDS-CSA/CMVSS

1B1 CODES/STANDARDS USA

1B1 265

FIRST USED **14 P-SERIES**

DO NOT SCALE DRAWING

TITLE: **WIRING INSTL-EXTERIOR LAMPS**

SHEET 2 PART NO **183747** REV

FOR ELECTRICAL
TORQUE
SPECIFICATIONS
SEE DWG NO.
128783-01-000

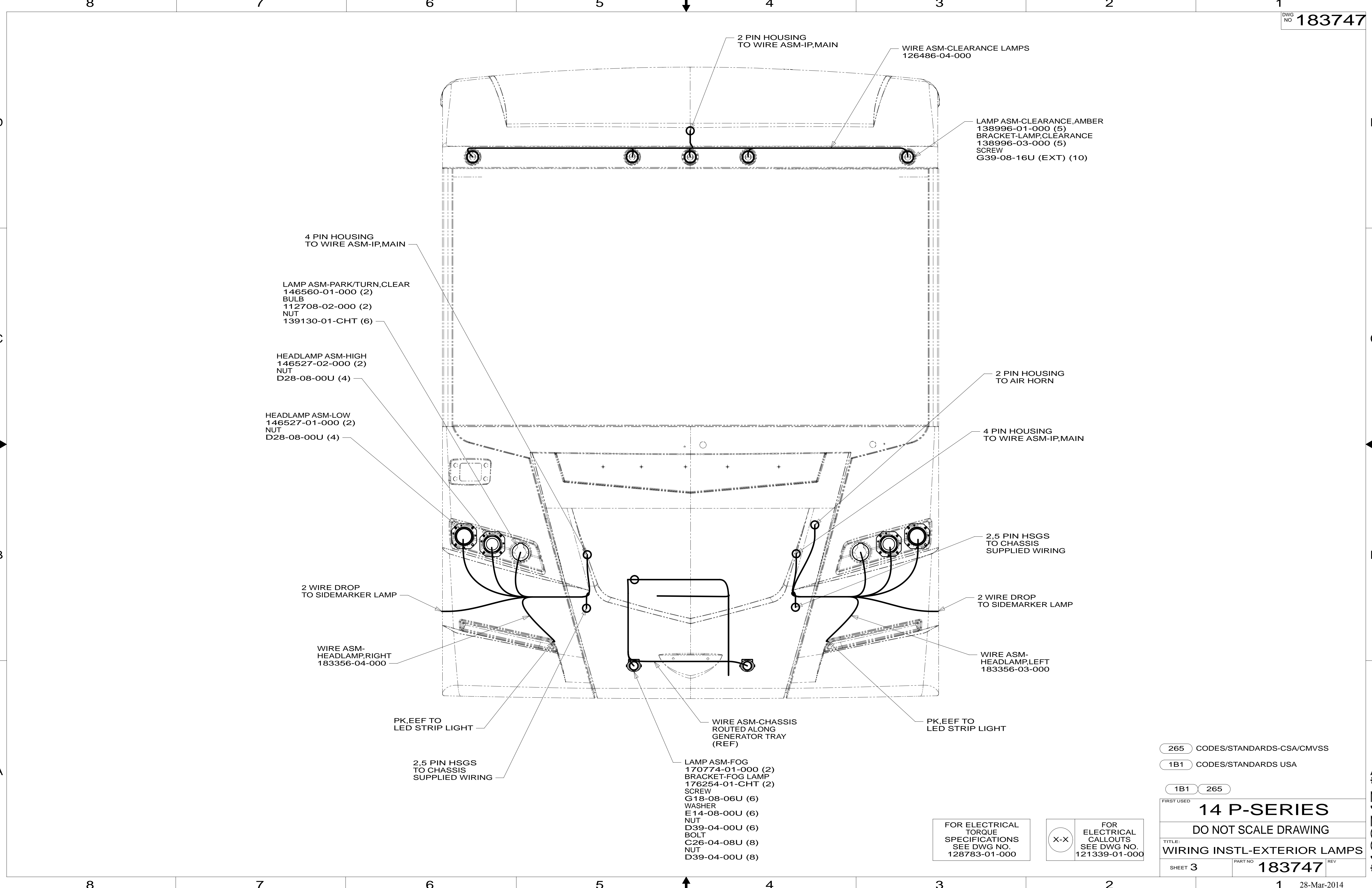
FOR
ELECTRICAL
CALLOUTS
SEE DWG NO.
121339-01-000

2 VENT HOSES ON LAMP ASSEMBLY MUST BE TURNED DOWN
AFTER LIGHT IS INSTALLED.

1 REMOVE PAPER BACKING FROM REFLECTOR AND PREP APPLICATION
SURFACE WITH ISOPROPYL ALCOHOL WIPE BEFORE INSTALLATION.

NOTES:

* 183747 * A



- 2 PIN HOUSING TO WIRE ASM-IP,MAIN
- WIRE ASM-CLEARANCE LAMPS 126486-04-000
- LAMP ASM-CLEARANCE,AMBER 138996-01-000 (5)
- BRACKET-LAMP,CLEARANCE 138996-03-000 (5)
- SCREW G39-08-16U (EXT) (10)
- 4 PIN HOUSING TO WIRE ASM-IP,MAIN
- LAMP ASM-PARK/TURN,CLEAR 146560-01-000 (2)
- BULB 112708-02-000 (2)
- NUT 139130-01-CHT (6)
- HEADLAMP ASM-HIGH 146527-02-000 (2)
- NUT D28-08-00U (4)
- HEADLAMP ASM-LOW 146527-01-000 (2)
- NUT D28-08-00U (4)
- 2 PIN HOUSING TO AIR HORN
- 4 PIN HOUSING TO WIRE ASM-IP,MAIN
- 2.5 PIN HSGS TO CHASSIS SUPPLIED WIRING
- 2 WIRE DROP TO SIDEMARKER LAMP
- WIRE ASM-HEADLAMP,RIGHT 183356-04-000
- PK,EEF TO LED STRIP LIGHT
- 2.5 PIN HSGS TO CHASSIS SUPPLIED WIRING
- WIRE ASM-CHASSIS ROUTED ALONG GENERATOR TRAY (REF)
- LAMP ASM-FOG 170774-01-000 (2)
- BRACKET-FOG LAMP 176254-01-CHT (2)
- SCREW G18-08-06U (6)
- WASHER E14-08-00U (6)
- NUT D39-04-00U (6)
- BOLT C26-04-08U (8)
- NUT D39-04-00U (8)
- PK,EEF TO LED STRIP LIGHT
- 2 WIRE DROP TO SIDEMARKER LAMP
- WIRE ASM-HEADLAMP,LEFT 183356-03-000

265 CODES/STANDARDS-CSA/CMVSS

1B1 CODES/STANDARDS USA

1B1 265

FIRST USED **14 P-SERIES**

DO NOT SCALE DRAWING

TITLE: **WIRING INSTL-EXTERIOR LAMPS**

SHEET 3 PART NO **183747** REV

FOR ELECTRICAL TORQUE SPECIFICATIONS SEE DWG NO. 128783-01-000

FOR ELECTRICAL CALLOUTS SEE DWG NO. 121339-01-000

*183747 *A