



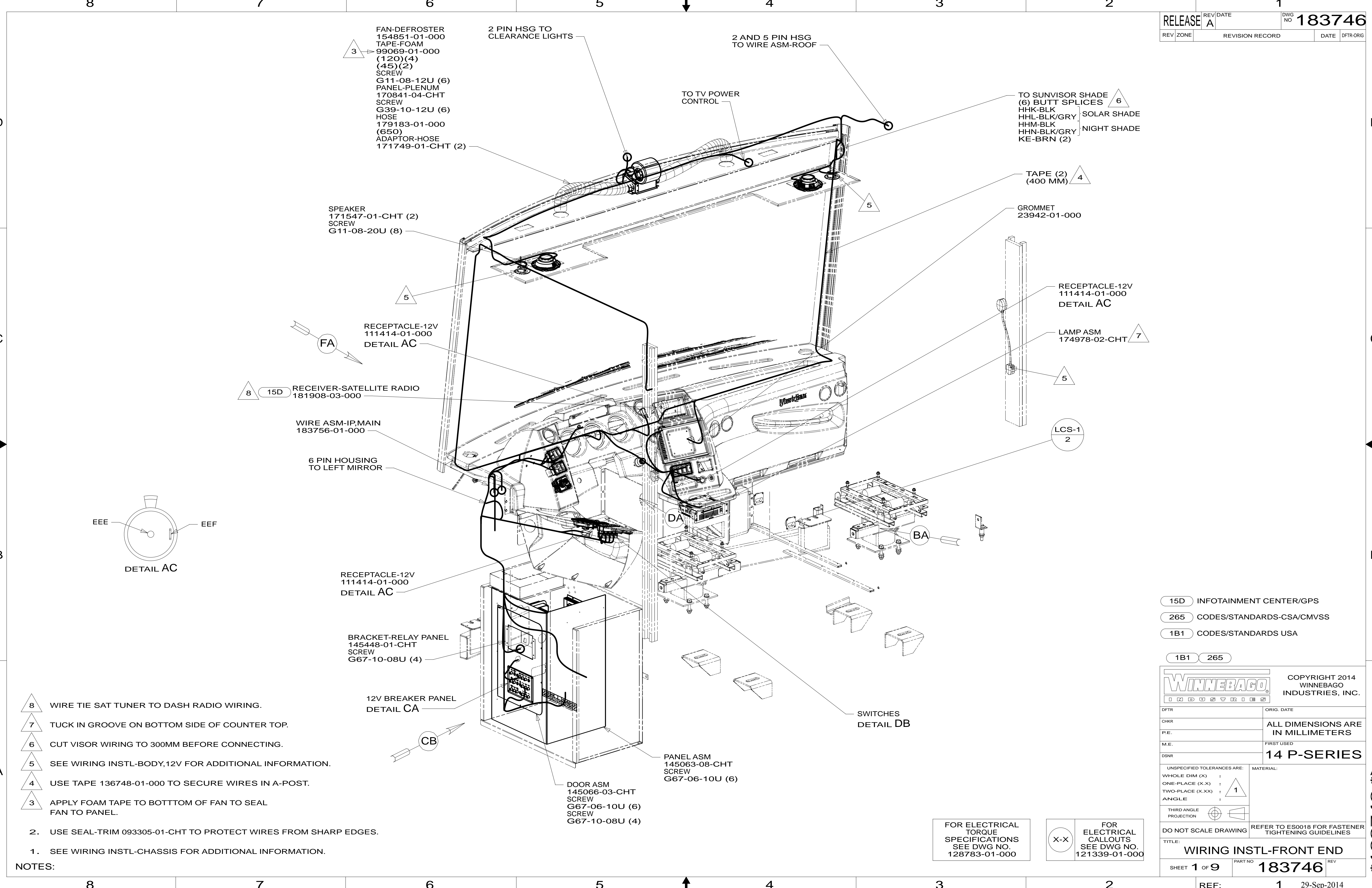
**DANGER**

**Danger of electrical shock, burns or death.** Always remove all power sources before attempting any repair, service or diagnostic work. Power can be present from shore power, generator, inverter or battery. All power sources must be disabled and secured before performing any service.



**CAUTION**

If you lack the skills, tools or equipment to perform diagnostic or repair work leave such work to an authorized Winnebago Industries dealer or other qualified shop.



- 3 FAN-DEFROSTER 154851-01-000
- TAPE-FOAM 99069-01-000 (120)(4) (45)(2)
- SCREW G11-08-12U (6)
- PANEL-PLENUM 170841-04-CHT
- SCREW G39-10-12U (6)
- HOSE 179183-01-000 (650)
- ADAPTOR-HOSE 171749-01-CHT (2)

- 2 PIN HSG TO CLEARANCE LIGHTS
- 2 AND 5 PIN HSG TO WIRE ASM-ROOF

- 6 TO SUNVISOR SHADE (6) BUTT SPLICES
- HHK-BLK SOLAR SHADE
- HHL-BLK/GRY NIGHT SHADE
- HHM-BLK
- HHN-BLK/GRY
- KE-BRN (2)

- 5 SPEAKER 171547-01-CHT (2)
- SCREW G11-08-20U (8)

- 4 TAPE (2) (400 MM)

- 5 GROMMET 23942-01-000

- FA RECEPTACLE-12V 111414-01-000
- DETAIL AC

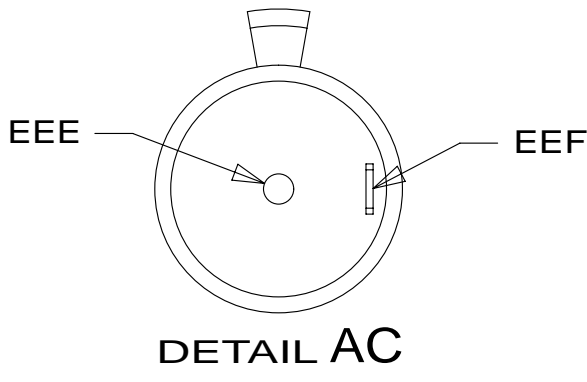
- 5 RECEPTACLE-12V 111414-01-000
- DETAIL AC

- 7 LAMP ASM 174978-02-CHT

- 8 15D RECEIVER-SATELLITE RADIO 181908-03-000

- WIRE ASM-IP,MAIN 183756-01-000

- 6 PIN HOUSING TO LEFT MIRROR



- RECEPTACLE-12V 111414-01-000
- DETAIL AC

- BRACKET-RELAY PANEL 145448-01-CHT
- SCREW G67-10-08U (4)

- 12V BREAKER PANEL
- DETAIL CA

- DA PANEL ASM 145063-08-CHT
- SCREW G67-06-10U (6)

- CB DOOR ASM 145066-03-CHT
- SCREW G67-06-10U (6)
- SCREW G67-10-08U (4)

- BA SWITCHES
- DETAIL DB

- 8 WIRE TIE SAT TUNER TO DASH RADIO WIRING.
- 7 TUCK IN GROOVE ON BOTTOM SIDE OF COUNTER TOP.
- 6 CUT VISOR WIRING TO 300MM BEFORE CONNECTING.
- 5 SEE WIRING INSTL-BODY,12V FOR ADDITIONAL INFORMATION.
- 4 USE TAPE 136748-01-000 TO SECURE WIRES IN A-POST.
- 3 APPLY FOAM TAPE TO BOTTTOM OF FAN TO SEAL FAN TO PANEL.

- 2. USE SEAL-TRIM 093305-01-CHT TO PROTECT WIRES FROM SHARP EDGES.
- 1. SEE WIRING INSTL-CHASSIS FOR ADDITIONAL INFORMATION.

NOTES:

- 15D INFOTAINMENT CENTER/GPS
- 265 CODES/STANDARDS-CSA/CMVSS
- 1B1 CODES/STANDARDS USA

- 1B1 265

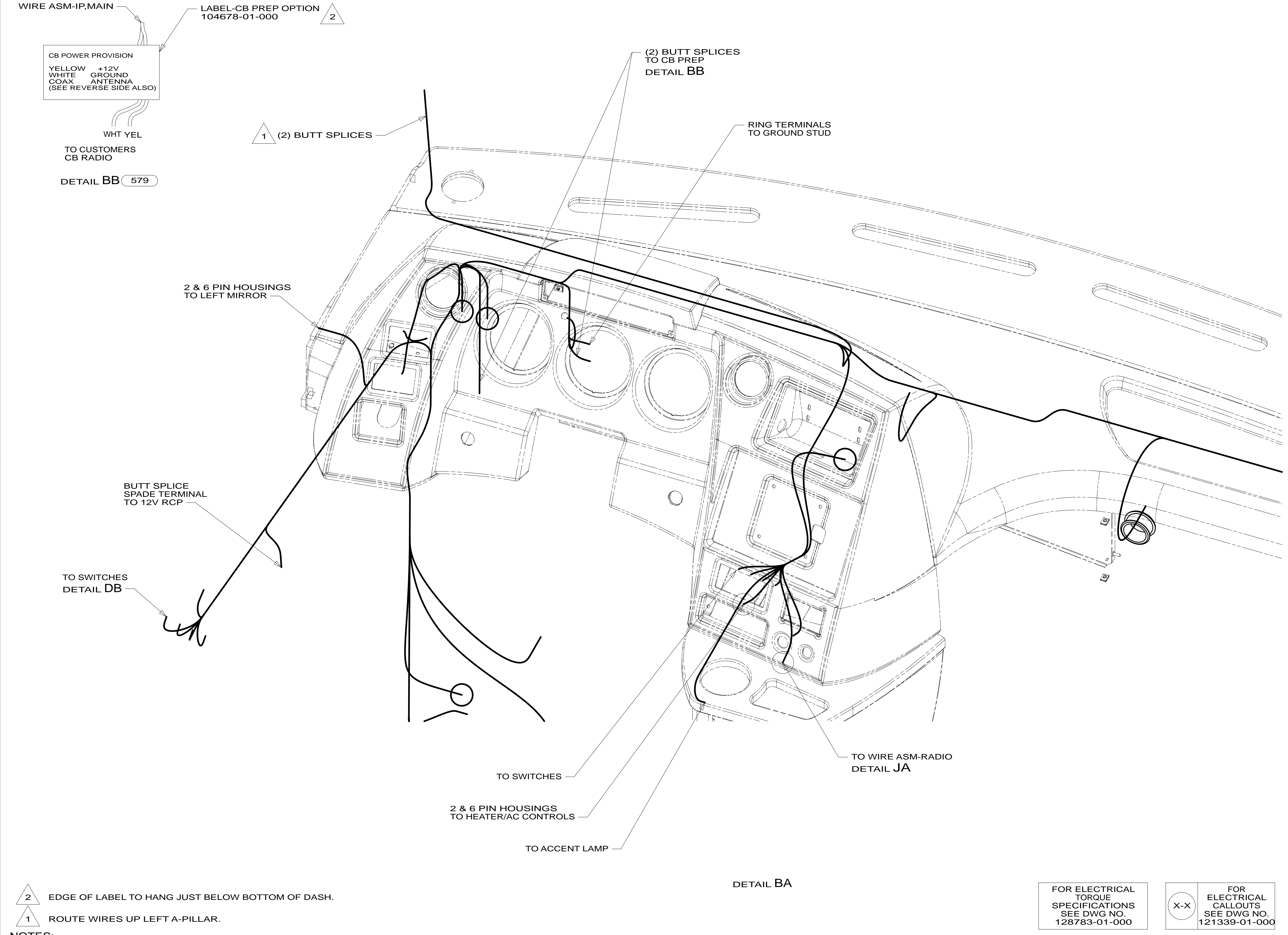


DFTR	ORIG. DATE
CHKR	ALL DIMENSIONS ARE IN MILLIMETERS
P.E.	
M.E.	FIRST USED
DSNR	14 P-SERIES
UNSPECIFIED TOLERANCES ARE:	
WHOLE DIM (X)	MATERIAL:
ONE-PLACE (X.X)	
TWO-PLACE (X.XX)	
ANGLE	
THIRD ANGLE PROJECTION	
DO NOT SCALE DRAWING REFER TO ES0018 FOR FASTENER TIGHTENING GUIDELINES	
TITLE: WIRING INSTL-FRONT END	
SHEET 1 OF 9	PART NO 183746 REV

FOR ELECTRICAL TORQUE SPECIFICATIONS SEE DWG NO. 128783-01-000

FOR ELECTRICAL CALLOUTS SEE DWG NO. 121339-01-000

\* 183746 \*



- 2 EDGE OF LABEL TO HANG JUST BELOW BOTTOM OF DASH.
- 1 ROUTE WIRES UP LEFT A-PILLAR.

NOTES:

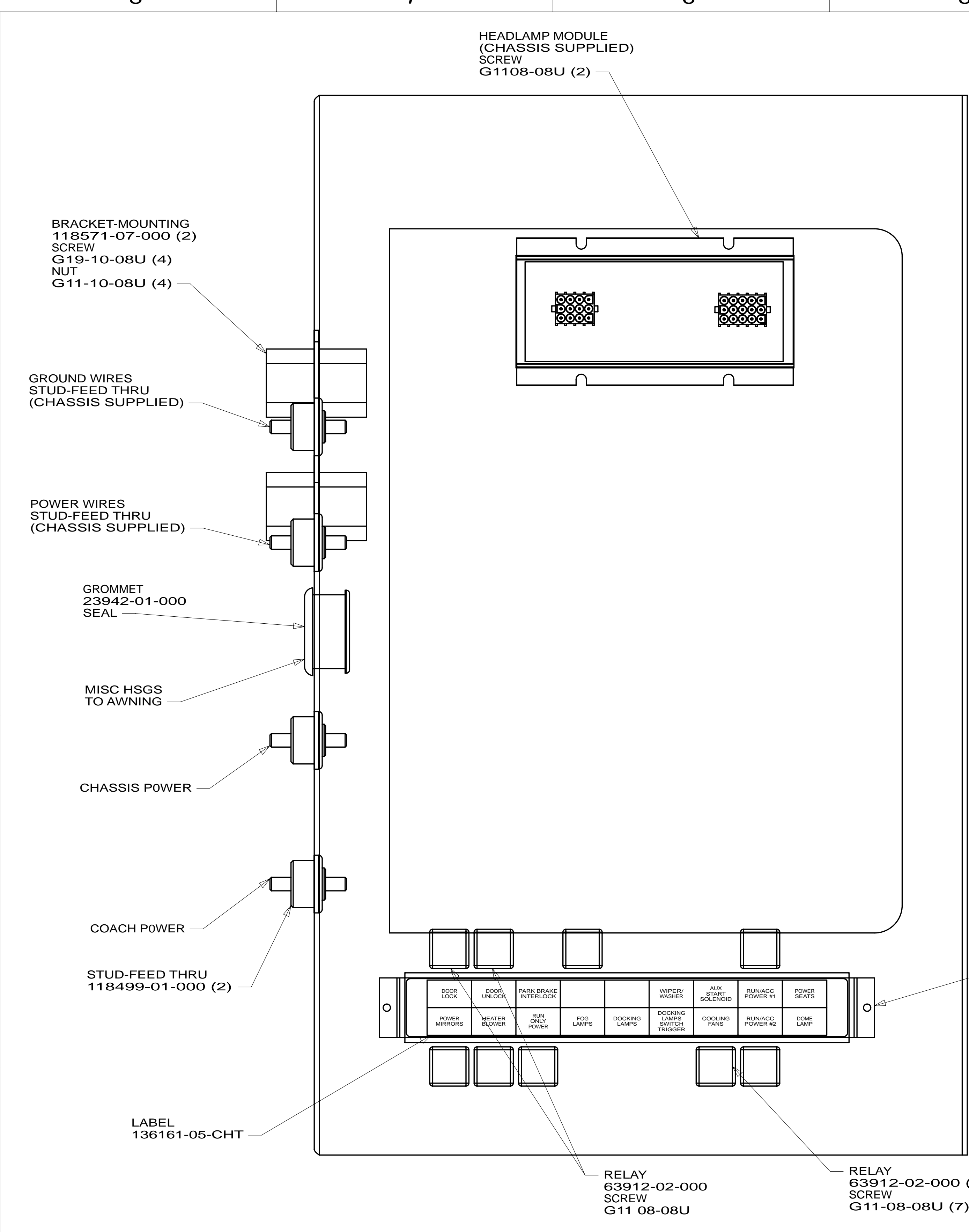
- 579 RADIO - CB WIRE PREP
- 265 CODES/STANDARDS-CSA/CMVSS
- 1B1 CODES/STANDARDS USA

FIRST USED	<b>14 P-SERIES</b>	
<b>DO NOT SCALE DRAWING</b>		
<b>TITLE: WIRING INSTL-FRONT END</b>		
SHEET 2	PART NO <b>183746</b>	REV

FOR ELECTRICAL TORQUE SPECIFICATIONS SEE DWG NO. 128783-01-000

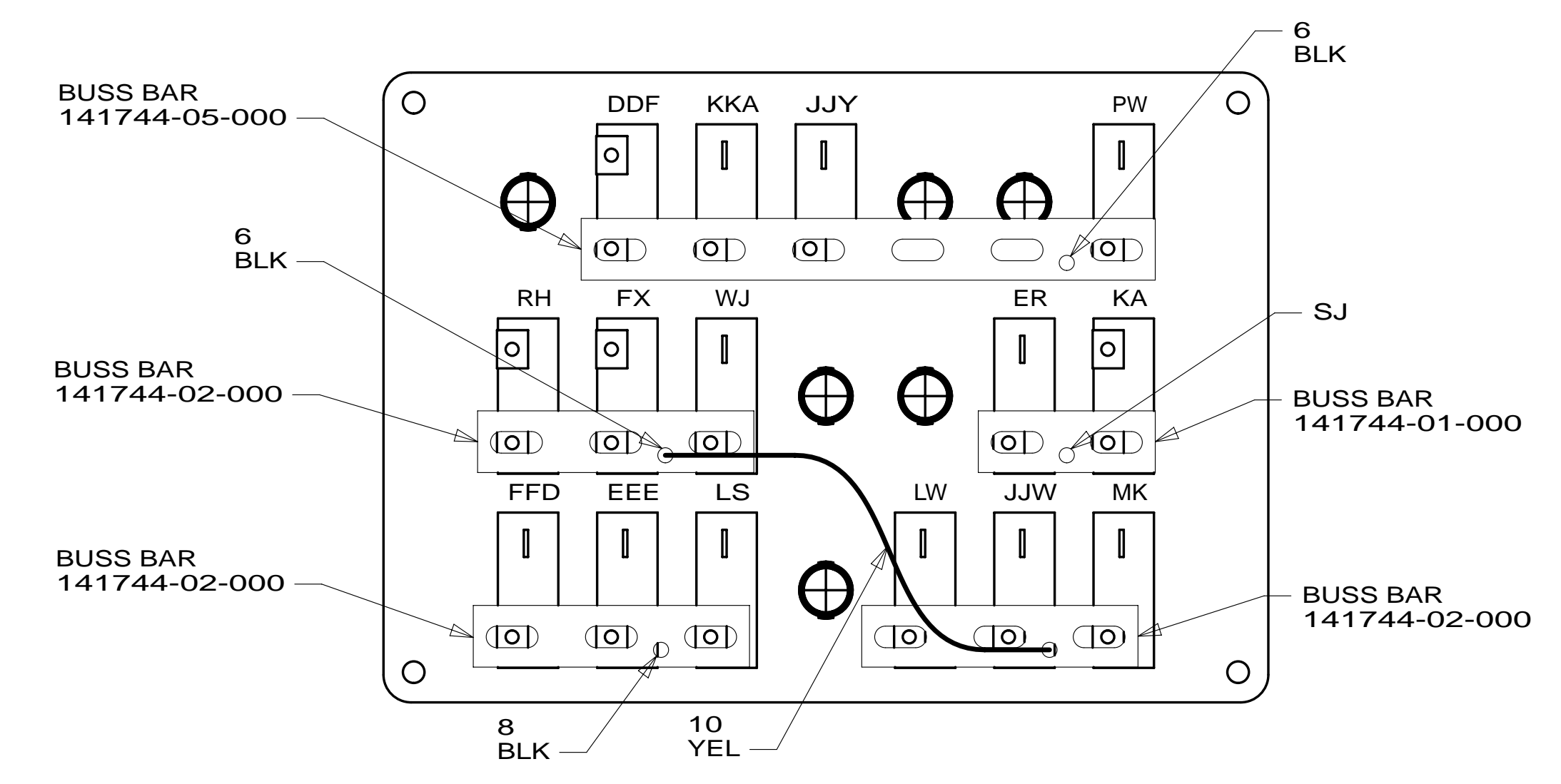
FOR ELECTRICAL CALLOUTS SEE DWG NO. 121339-01-000

\*183746 \*A

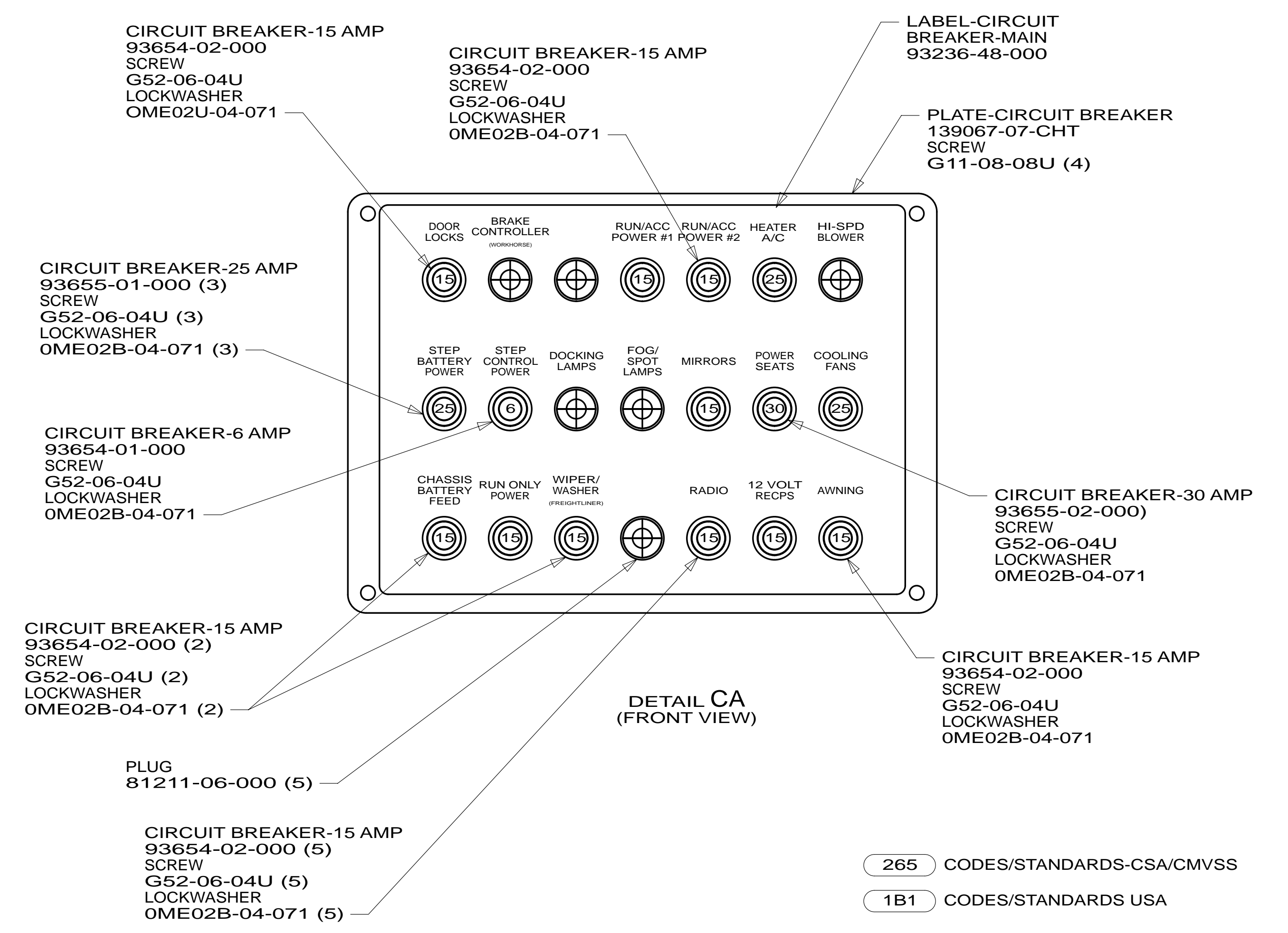


VIEW CB  
(WITH COVER REMOVED) 3

- NOTES:
- 3 SEAL ALL SCREWS ON EXTERIOR SIDE OF COMPARTMENT. REFER TO SEALANT MANUAL.
  - 2 CIRCUIT FFD IS PART OF WIRE ASM-CHASSIS.
  - 1 CIRCUITS LABELED ON BREAKER ARE FROM WIRE ASM-IP, MAIN, UNLESS OTHERWISE SPECIFIED.



DETAIL CA  
(BACK VIEW) 1



DETAIL CA  
(FRONT VIEW)

- 265 CODES/STANDARDS-CSA/CMVSS
- 1B1 CODES/STANDARDS USA
- 1B1 265

FOR ELECTRICAL TORQUE SPECIFICATIONS SEE DWG NO. 128783-01-000

FOR ELECTRICAL CALLOUTS SEE DWG NO. 121339-01-000

FIRST USED

**14 P-SERIES**

DO NOT SCALE DRAWING

TITLE: **WIRING INSTL-FRONT END**

SHEET 3 PART NO. **183746** REV

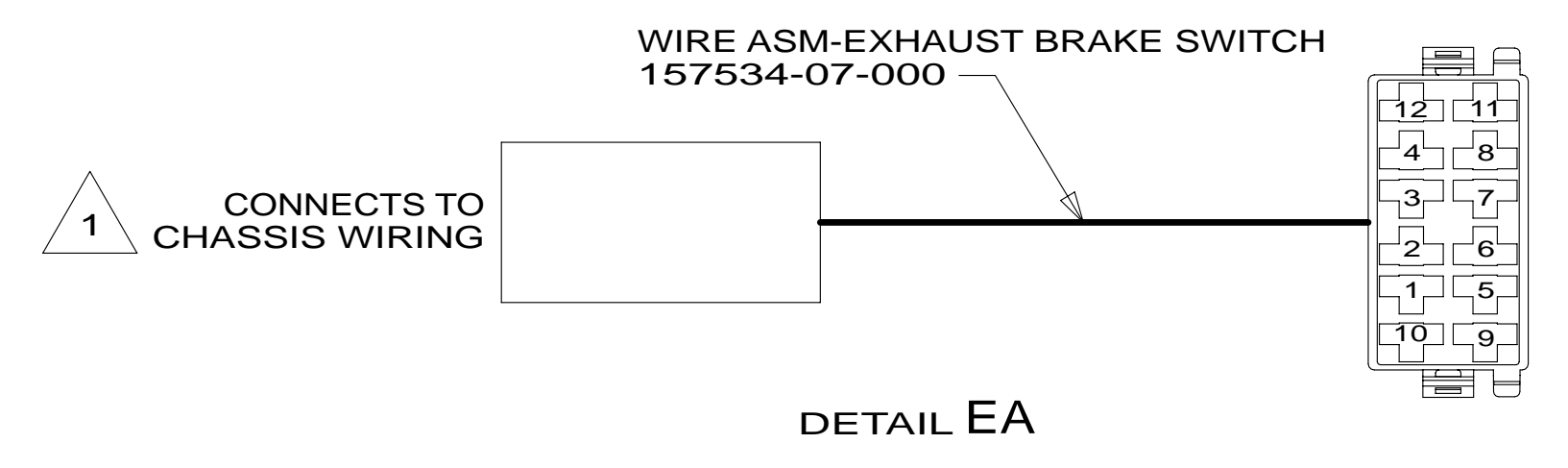
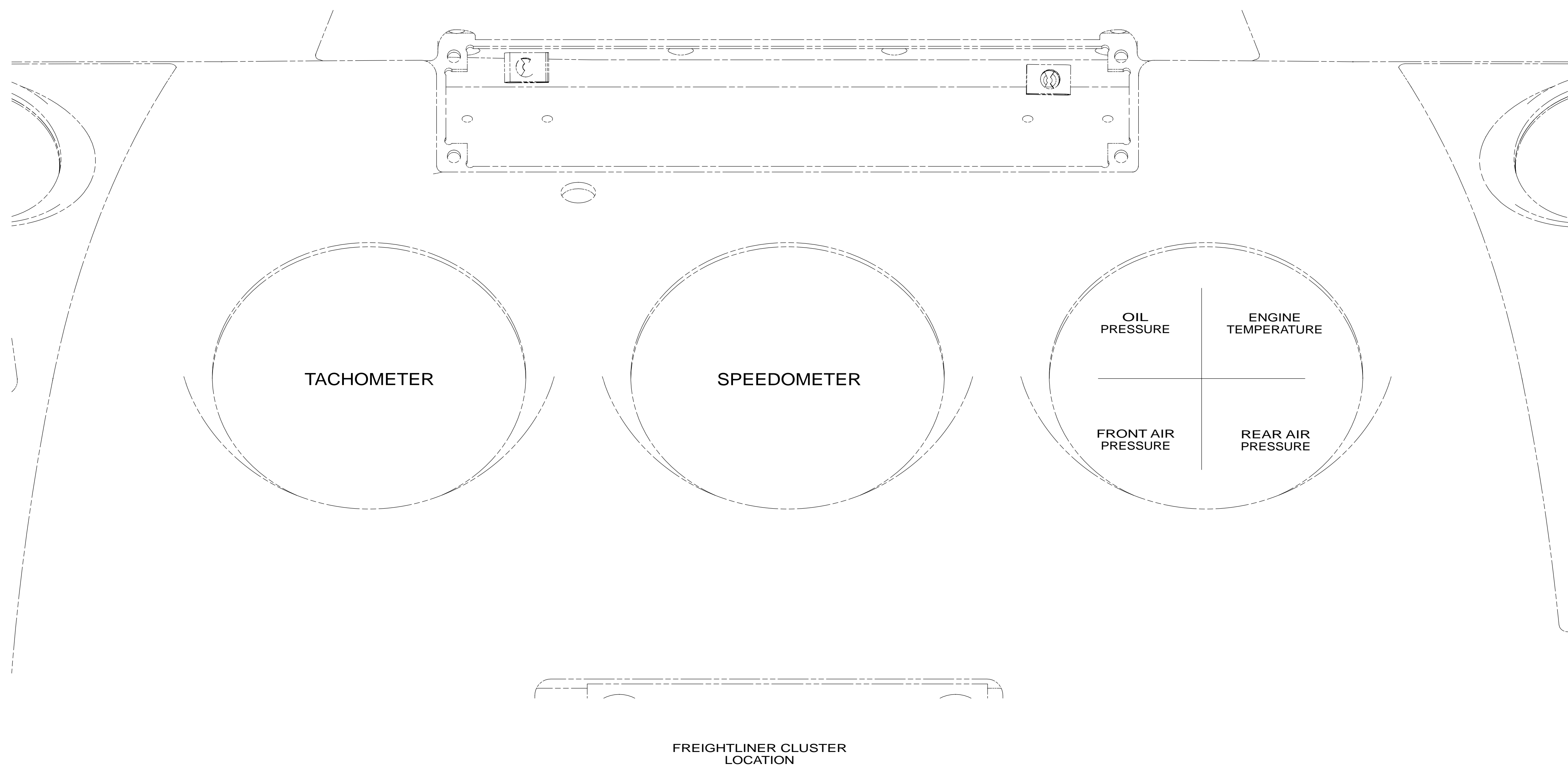
29-Sep-2014

\* 183746 \*









1 CHASSIS WIRING HAS MATING CONNECTOR AND IS LABELED "ENGINE BRAKE SWITCH"

NOTES:

265 CODES/STANDARDS-CSA/CMVSS  
 1B1 CODES/STANDARDS USA

1B1 265

FIRST USED **14 P-SERIES**

DO NOT SCALE DRAWING

TITLE: **WIRING INSTL-FRONT END**

SHEET 5 PART NO **183746** REV

FOR ELECTRICAL TORQUE SPECIFICATIONS SEE DWG NO. 128783-01-000

X-X FOR ELECTRICAL CALLOUTS SEE DWG NO. 121339-01-000

\*183746 \*A

8

7

6

5

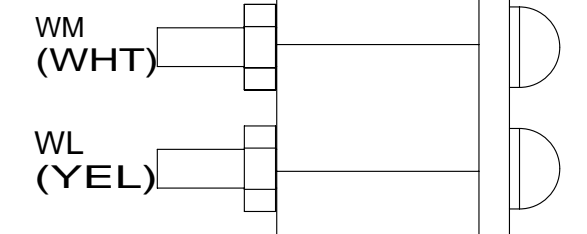
4

3

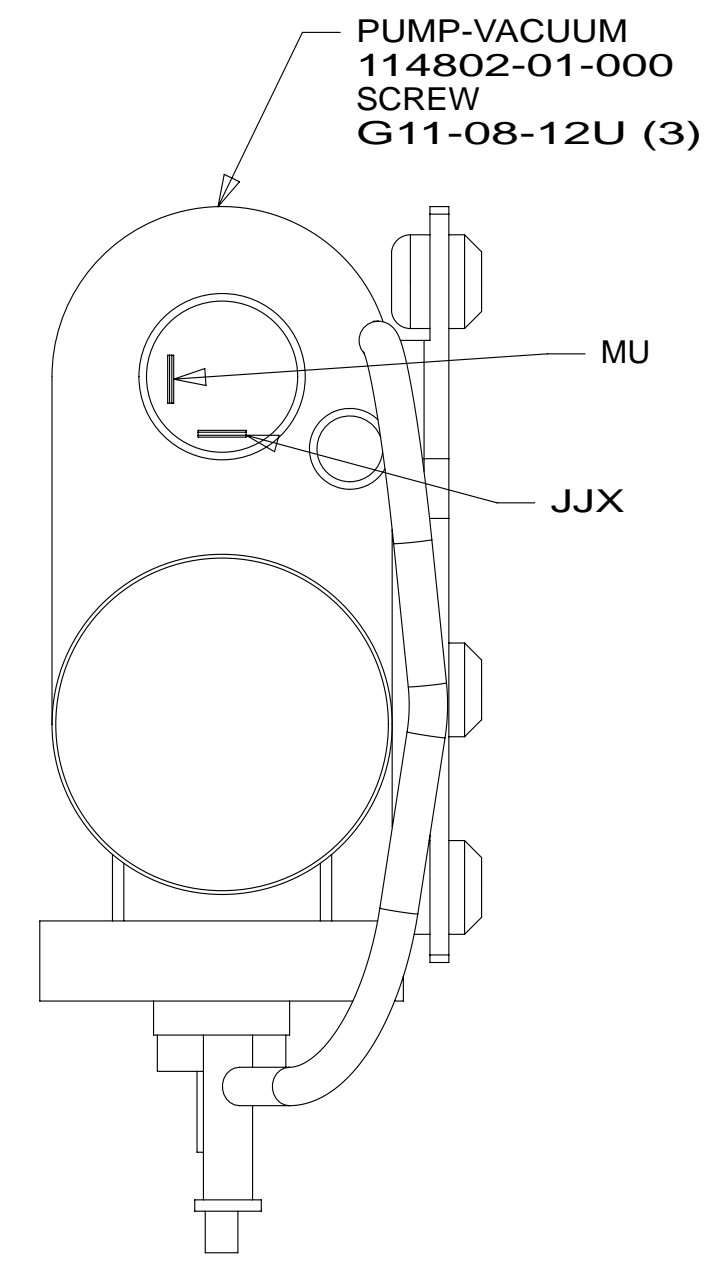
2

1

THIS SIDE POINTED TO TOP OF DOOR



DETAIL FC



DETAIL FB

2 PIN HOUSING AND REAR CAMERA CABLE TO RIGHT MIRROR

TO DOOR CONNECTION SEE DETAIL FC

TO STEP LIGHTS

WIRE ASM-DOOR LOCK (FROM SIDEWALL-DETAIL FC)

4 PIN HOUSING TO WIRE ASM-DOOR LOCK IN SIDEWALL

2 PIN HOUSING TO WASHER BOTTLE

WIRE ASM-IP,MAIN FROM INTERIOR

TO EVAPORATOR THERMOSTAT AND A/C BINARY SWITCH

RELAY 177459-01-000 (3)  
SCREW G39-10-08U (3)

2 PIN HOUSING TO VACUUM PUMP  
DETAIL FB

4 PIN HOUSING TO WIRE ASM-HEADLAMP

TEMP SENSOR (REF)

BRACKET-ZEE,TEMP SENSOR 147428-01-CHT  
SCREW G39-08-08U (2)

4 PIN HOUSING TO WIRE ASM-HEADLAMP

VIEW FA

265 CODES/STANDARDS-CSA/CMVSS

1B1 CODES/STANDARDS USA

1B1 265

FIRST USED **14 P-SERIES**

DO NOT SCALE DRAWING

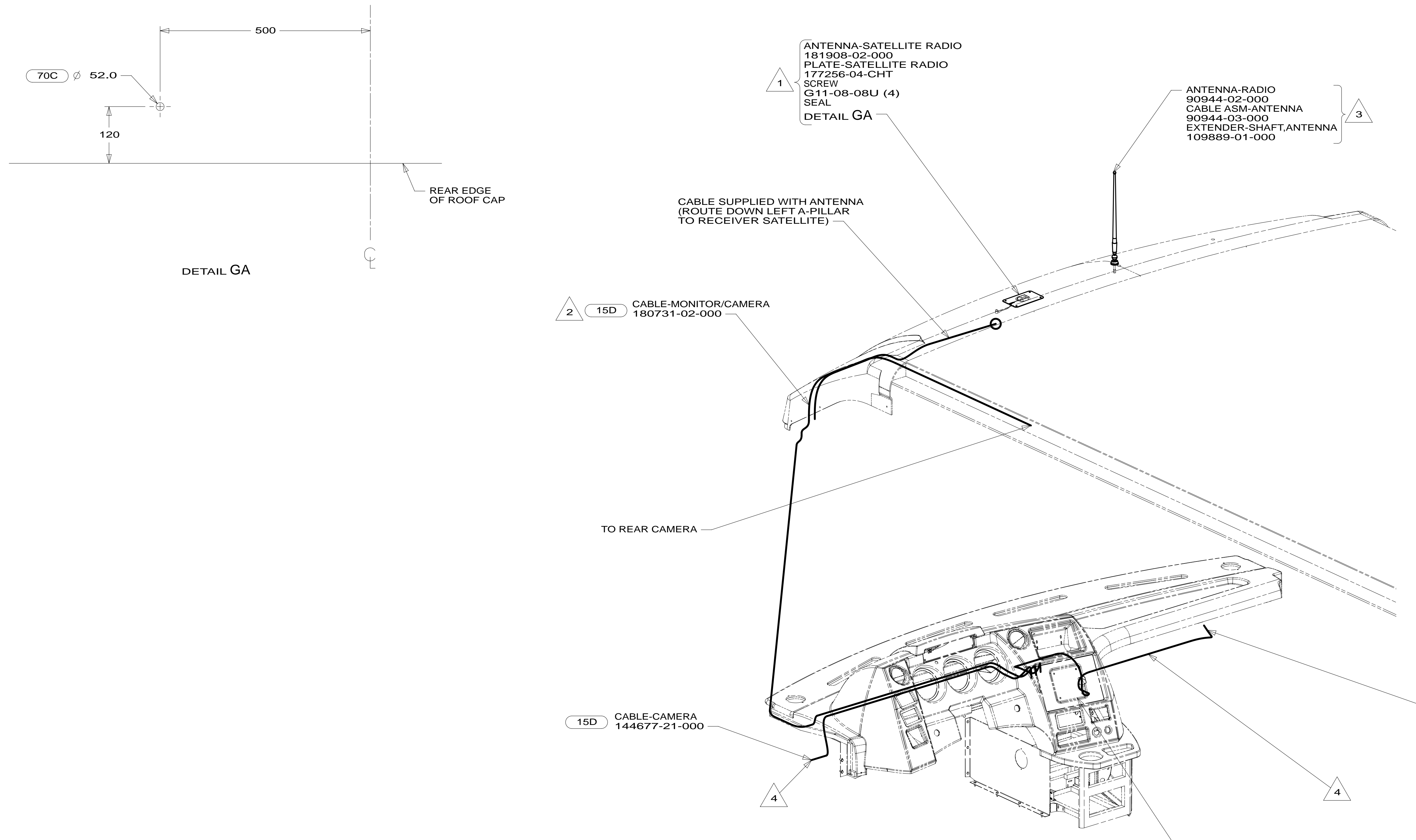
TITLE: **WIRING INSTL-FRONT END**

SHEET 6 PART NO **183746** REV

FOR ELECTRICAL TORQUE SPECIFICATIONS SEE DWG NO. 128783-01-000

X-X FOR ELECTRICAL CALLOUTS SEE DWG NO. 121339-01-000

\* 183746 \*



- NOTES:
- 5 SEE RADIO/MONITOR INSTL FOR ADDITIONAL INFORMATION.
  - 4 ROUTE CABLE TO EXTERIOR THRU HOLE IN PANEL ALONG WITH HEATER WIRING TO CAMERA. CAMERA IS IN MIRROR.
  - 3 SEAL AROUND ANTENNA BASE.
  - 2 RUN CABLE THRU LEFT HAND COVE TO FRONT OF UNIT AND DOWN LEFT A-PILLAR TO MONITOR.
  - 1 MOUNT ANTENNA SUCH THAT BASE IS SQUARE W/REAR OF ROOF CAP & HOLE IS DIRECTLY OVER HOLE IN FIBERGLASS. SEAL HOLE IN ROOF CAP, BASE AT SCREWS.

- 70C RADIO - SATELLITE
- 15D INFOTAINMENT CENTER/GPS
- 265 CODES/STANDARDS-CSA/CMVSS
- 1B1 CODES/STANDARDS USA

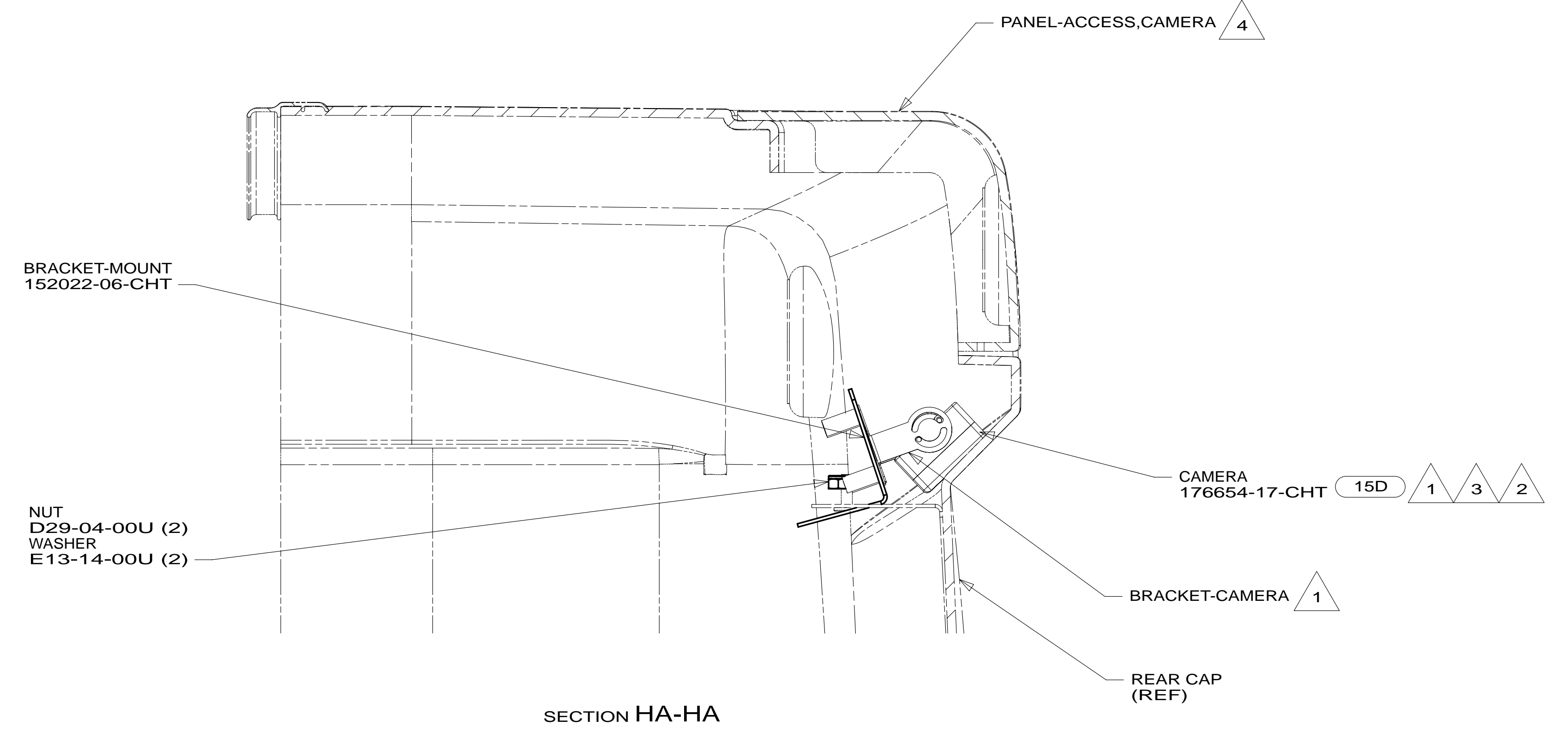
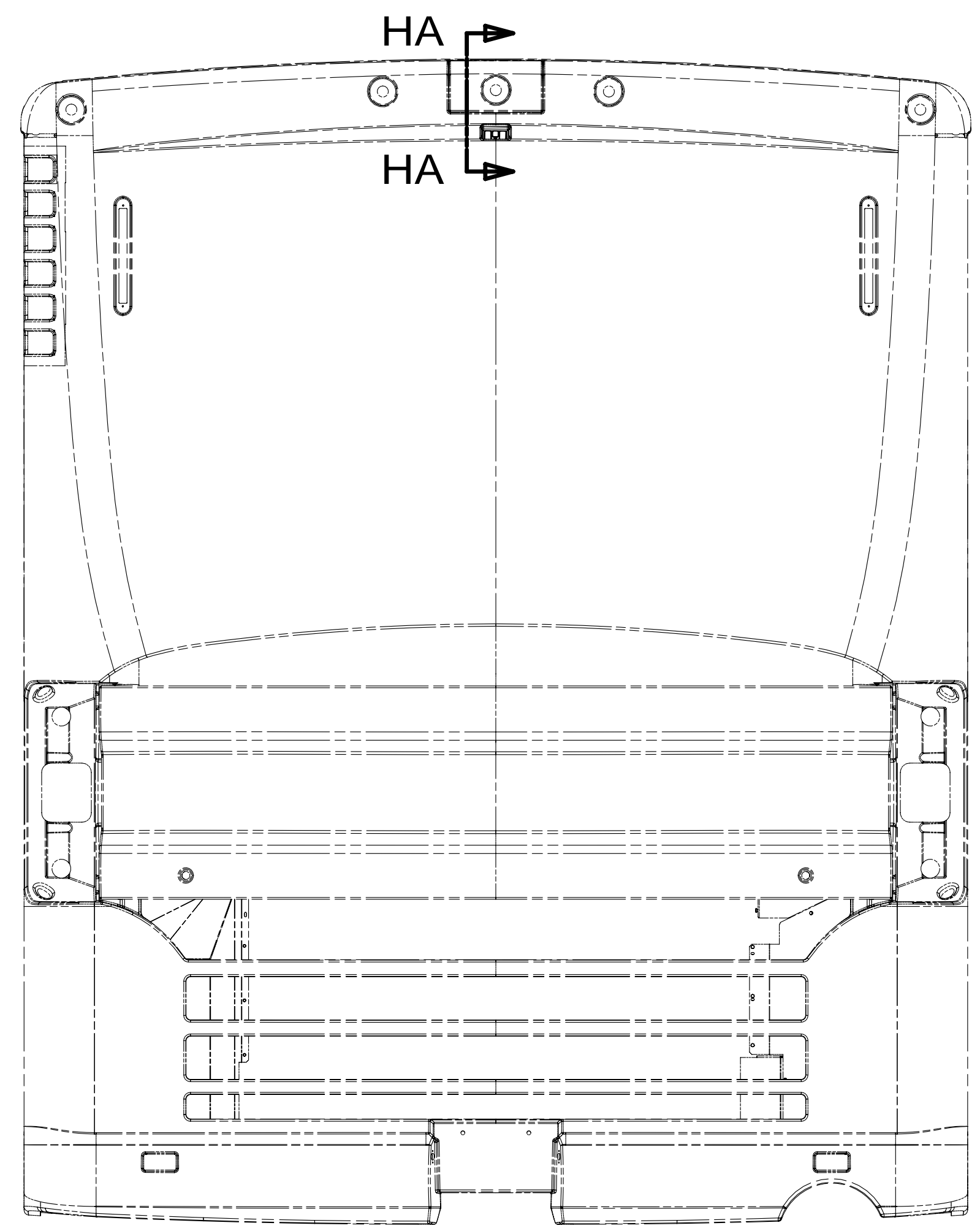
FIRST USED	
<b>14 P-SERIES</b>	
DO NOT SCALE DRAWING	
TITLE: <b>WIRING INSTL-FRONT END</b>	
SHEET 7	PART NO <b>183746</b> REV
29-Sep-2014	

FOR ELECTRICAL TORQUE SPECIFICATIONS SEE DWG NO. 128783-01-000

FOR ELECTRICAL CALLOUTS SEE DWG NO. 121339-01-000

\* 183746 \* A





SECTION HA-HA

- NOTES:
- 4 SEE PANEL-REAR CAP FOR LOCATION.
  - 3 ALIGN CAMERA IN CENTER OF OPENING AND ADJUST CAMERA VIEWING SO BACKWALL IS JUST VISIBLE IN MONITOR.
  - 2 APPLY TAPE 180131-01-CHT TO SEAL CAMERA CONNECTOR, THEN COVER WITH TAPE 8363-01-000 WITH 15D
  - 1 PARTS SUPPLIED WITH REAR CAMERA

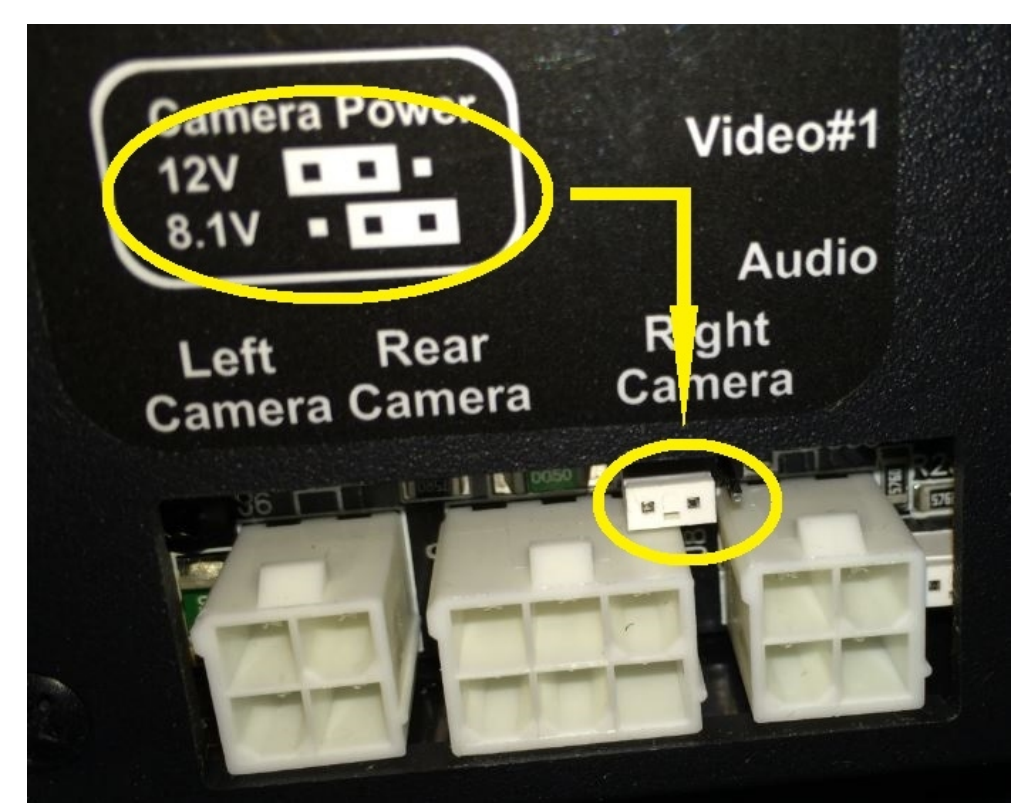
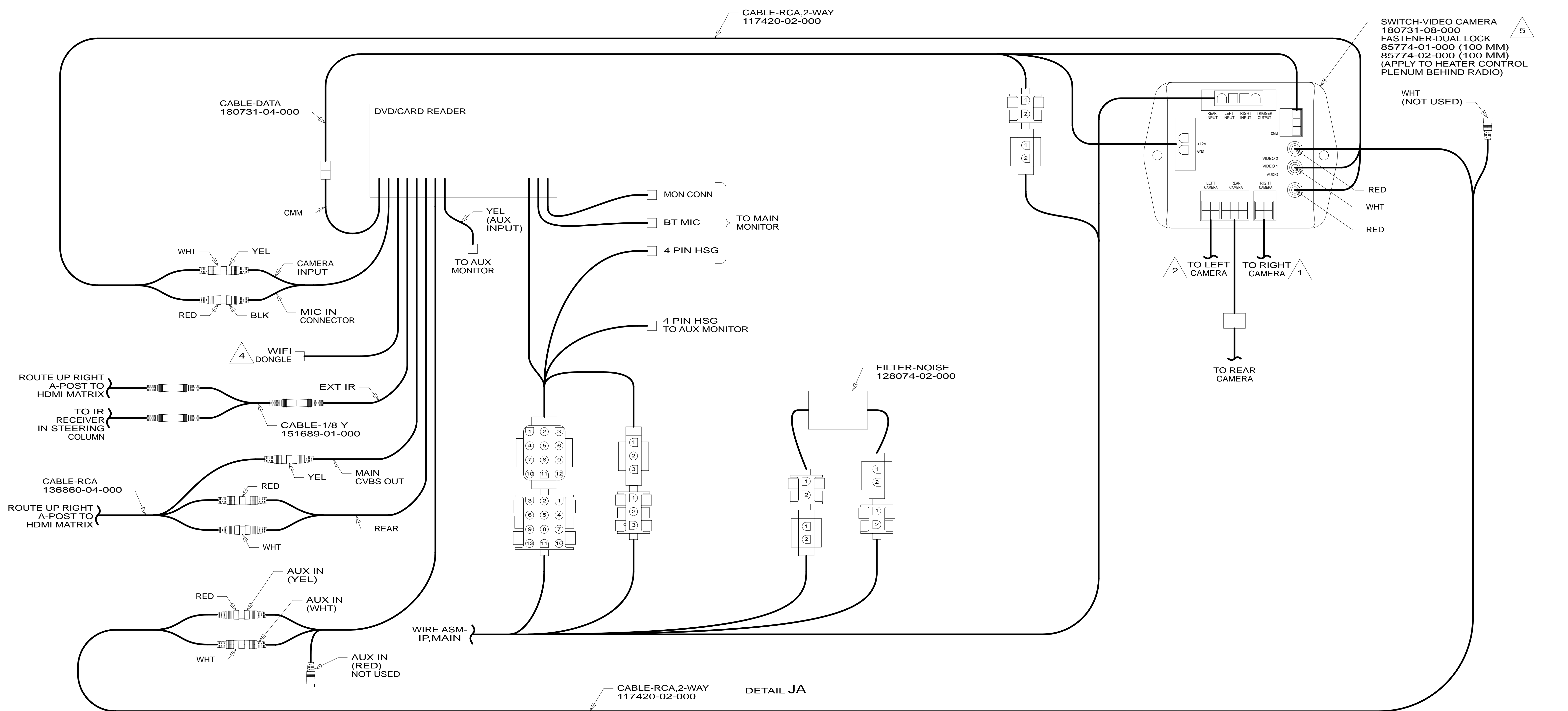
- 15D INFOTAINMENT CENTER/GPS
- 265 CODES/STANDARDS-CSA/CMVSS
- 1B1 CODES/STANDARDS USA

FIRST USED	<b>14 P-SERIES</b>	
<b>DO NOT SCALE DRAWING</b>		
<b>TITLE: WIRING INSTL-FRONT END</b>		
SHEET 8	PART NO <b>183746</b>	REV
		29-Sep-2014

FOR ELECTRICAL TORQUE SPECIFICATIONS SEE DWG NO. 128783-01-000

FOR ELECTRICAL CALLOUTS SEE DWG NO. 121339-01-000

\*183746 \*A



DETAIL JB

DETAIL JA

- NOTES:
- 5 ENSURE CAMERA POWER JUMPER IS IN 12V POSITION. MOVE TO 12V POSITION IF NECESSARY. SEE DETAIL JB.
  - 4 CABLE SUPPLIED WITH RADIO.
  - 3. APPLY TAPE 8363-01-000 AS NECESSARY TO SECURE NON-LOCKING CONNECTIONS.
  - 2 MARK LEFT CABLE WITH YELLOW TAPE 900000-07-000 NEXT TO CONNECTOR.
  - 1 MARK RIGHT CABLE WITH WHITE TAPE 900000-08-000 NEXT TO CONNECTOR.

FOR ELECTRICAL TORQUE SPECIFICATIONS SEE DWG NO. 128783-01-000

FOR ELECTRICAL CALLOUTS SEE DWG NO. 121339-01-000

- 15D GPS-NAVIGATION SYSTEM
- 265 CODES/STANDARDS-CSA/CMVSS
- 1B1 CODES/STANDARDS USA

1B1	265	15D
FIRST USED		
<b>14 P-SERIES</b>		
DO NOT SCALE DRAWING		
TITLE: <b>WIRING INSTL-FRONT END</b>		
SHEET 9	PART NO. <b>183746</b>	REV

\* 183746 \* A