



DANGER

Danger of electrical shock, burns or death. Always remove all power sources before attempting any repair, service or diagnostic work. Power can be present from shore power, generator, inverter or battery. All power sources must be disabled and secured before performing any service.



CAUTION

If you lack the skills, tools or equipment to perform diagnostic or repair work leave such work to an authorized Winnebago Industries dealer or other qualified shop.

DRAWING NO.	MODEL	SHEET
183673-01	331K/P	1,2,7
183673-02	325B	1,3,7
183673-03	331H/P	1,4,7
183673-04	322R	1,5,7
183673-05	327Q/P	1,6,7

RELEASE A REV DATE DWG NO 183673
 REV ZONE REVISION RECORD DATE DFR-ORIG

	331K/P	325B	331H/P	322R	327Q/P
CABLE ASM-STARTER (RED)	141415-32-050	141415-33-033 1CW 141415-32-053 16C	141415-32-069	141415-32-045	141415-32-053
CABLE ASM-COACH BATTERY (YEL)	141415-52-014	141415-52-016	141415-52-015	141415-52-014	141415-52-014
CABLE ASM-COACH BATTERY GND (BLK)	133566-12-009	133566-12-007	133566-12-009	133566-12-006	133566-12-009
CABLE ASM-GENERATOR (GRN)	141415-42-042	141415-42-052	141415-42-043	141415-42-033	141415-42-072
CABLE ASM-GENERATOR GND (BLK)	133566-12-008	133566-12-008	133566-12-008	133566-12-008	133566-12-008
CABLE ASM-BATTERY DISCONNECT,BATTERY (BLU)	141416-27-012	141415-21-025	141416-27-019	141416-27-011	141416-27-012
CABLE ASM-BATTERY DISCONNECT,COMMON (PUR)	141416-17-012	141415-11-025	141416-17-019	141416-17-011	141416-17-012
CABLE ASM-FUSE (ORG)	141415-64-002	141415-64-002	141415-64-002	141415-64-002	141415-64-002
CABLE ASM-BREAKER (BLK)	140228-01-002	140228-01-002	140228-01-002	140228-01-002	140228-01-002
CABLE ASM-STARTER,EXT (RED 2)	141415-32-009	141415-32-018	141415-32-007	141415-32-005	141415-32-006

- 16C FORD CHASSIS-11,500# GVWR
- 1CW CHEVY CHASSIS 12,300 LB.GVWR
- 265 CODES/STANDARDS-CSA/CMVSS
- 1B1 CODES/STANDARDS USA

1B1 265

WINNEBAGO COPYRIGHT 2014 WINNEBAGO INDUSTRIES, INC.

DFTR	ORIG. DATE
CHKR	ALL DIMENSIONS ARE IN MILLIMETERS
P.E.	
M.E.	FIRST USED
DSNR	14 300-SERIES

UNSPECIFIED TOLERANCES ARE: MATERIAL:

WHOLE DIM (X) :
 ONE-PLACE (X.X) :
 TWO-PLACE (X.XX) :
 ANGLE :

THIRD ANGLE PROJECTION

DO NOT SCALE DRAWING REFER TO ES0018 FOR FASTENER TIGHTENING GUIDELINES

TITLE: **BATTERY INSTL**

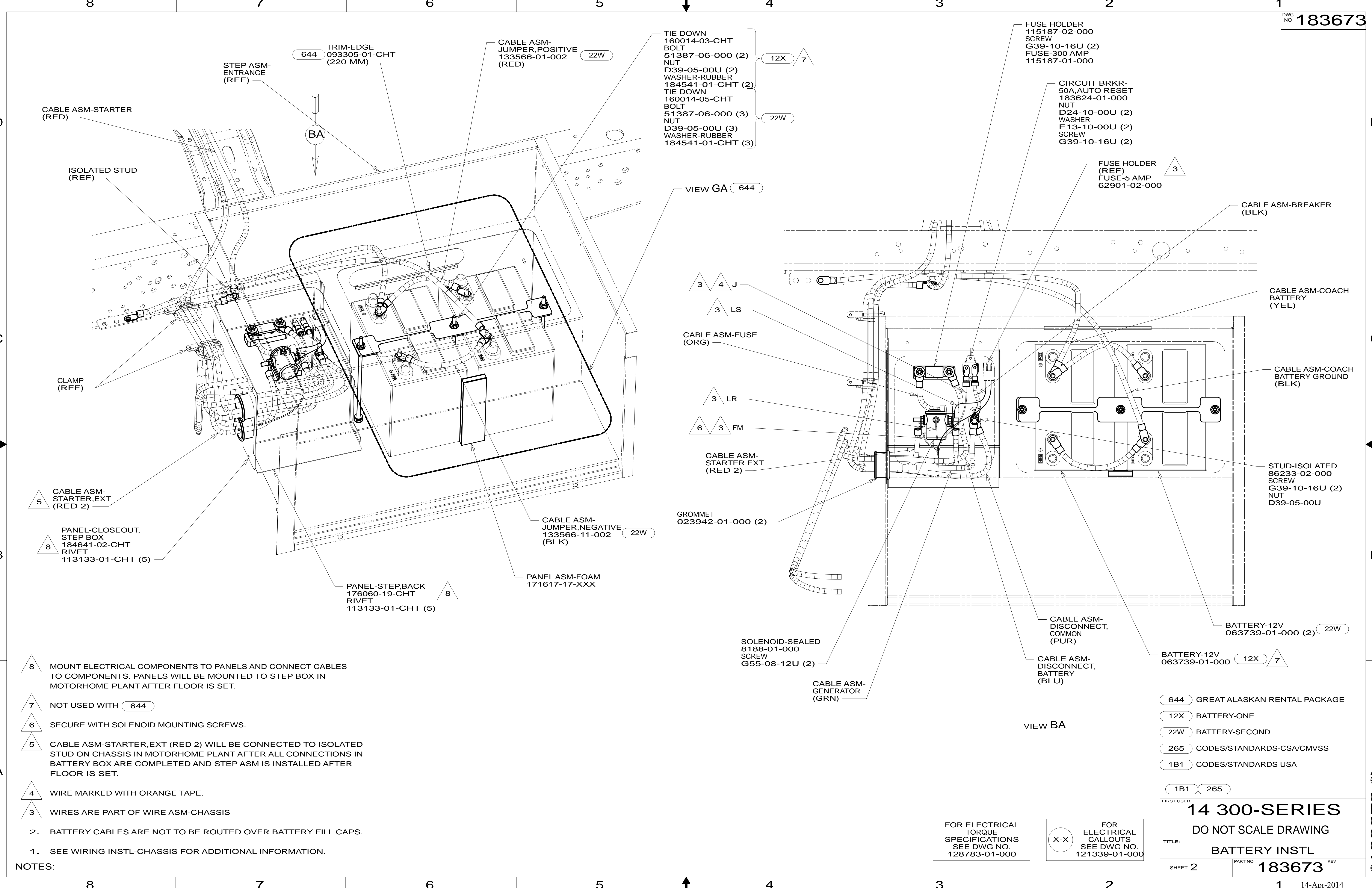
SHEET 1 OF 7 PART NO 183673 REV

REF: 1 14-Apr-2014

FOR ELECTRICAL TORQUE SPECIFICATIONS SEE DWG NO. 128783-01-000

FOR ELECTRICAL CALLOUTS SEE DWG NO. 121339-01-000

* 183673 * A



- TIE DOWN
160014-03-CHT
BOLT
51387-06-000 (2) 12X 7
- NUT
D39-05-00U (2)
- WASHER-RUBBER
184541-01-CHT (2)
- TIE DOWN
160014-05-CHT
BOLT
51387-06-000 (3) 22W
- NUT
D39-05-00U (3)
- WASHER-RUBBER
184541-01-CHT (3)

- FUSE HOLDER
115187-02-000
- SCREW
G39-10-16U (2)
- FUSE-300 AMP
115187-01-000

- CIRCUIT BRKR-
50A,AUTO RESET
183624-01-000
- NUT
D24-10-00U (2)
- WASHER
E13-10-00U (2)
- SCREW
G39-10-16U (2)

- FUSE HOLDER
(REF)
- FUSE-5 AMP
62901-02-000

- CABLE ASM-BREAKER
(BLK)

- CABLE ASM-COACH
BATTERY
(YEL)

- CABLE ASM-COACH
BATTERY GROUND
(BLK)

- STUD-ISOLATED
86233-02-000
SCREW
G39-10-16U (2)
- NUT
D39-05-00U

- BATTERY-12V
063739-01-000 (2) 22W

- BATTERY-12V
063739-01-000 12X 7

- CABLE ASM-DISCONNECT,
COMMON
(PUR)

- CABLE ASM-DISCONNECT,
BATTERY
(BLU)

- SOLENOID-SEALED
8188-01-000
SCREW
G55-08-12U (2)

- CABLE ASM-
GENERATOR
(GRN)

- GROMMET
023942-01-000 (2)

- CABLE ASM-
STARTER EXT
(RED 2)

- 3 LR

- 6 3 FM

- CABLE ASM-FUSE
(ORG)

- 3 4 J

- 3 LS

- VIEW GA 644

- CABLE ASM-
JUMPER,POSITIVE
133566-01-002 22W

- TRIM-EDGE
093305-01-CHT
(220 MM) 644

- STEP ASM-
ENTRANCE
(REF)

- CABLE ASM-STARTER
(RED)

- ISOLATED STUD
(REF)

- CLAMP
(REF)

- CABLE ASM-
STARTER,EXT
(RED 2) 5

- PANEL-CLOSEOUT,
STEP BOX
184641-02-CHT
RIVET
113133-01-CHT (5) 8

- PANEL-STEP,BACK
176060-19-CHT
RIVET
113133-01-CHT (5) 8

- CABLE ASM-
JUMPER,NEGATIVE
133566-11-002 22W

- PANEL ASM-FOAM
171617-17-XXX

8 MOUNT ELECTRICAL COMPONENTS TO PANELS AND CONNECT CABLES TO COMPONENTS. PANELS WILL BE MOUNTED TO STEP BOX IN MOTORHOME PLANT AFTER FLOOR IS SET.

7 NOT USED WITH 644

6 SECURE WITH SOLENOID MOUNTING SCREWS.

5 CABLE ASM-STARTER,EXT (RED 2) WILL BE CONNECTED TO ISOLATED STUD ON CHASSIS IN MOTORHOME PLANT AFTER ALL CONNECTIONS IN BATTERY BOX ARE COMPLETED AND STEP ASM IS INSTALLED AFTER FLOOR IS SET.

4 WIRE MARKED WITH ORANGE TAPE.

3 WIRES ARE PART OF WIRE ASM-CHASSIS

2. BATTERY CABLES ARE NOT TO BE ROUTED OVER BATTERY FILL CAPS.

1. SEE WIRING INSTL-CHASSIS FOR ADDITIONAL INFORMATION.

NOTES:

- 644 GREAT ALASKAN RENTAL PACKAGE
- 12X BATTERY-ONE
- 22W BATTERY-SECOND
- 265 CODES/STANDARDS-CSA/CMVSS
- 1B1 CODES/STANDARDS USA

- 1B1 265

FIRST USED
14 300-SERIES

DO NOT SCALE DRAWING

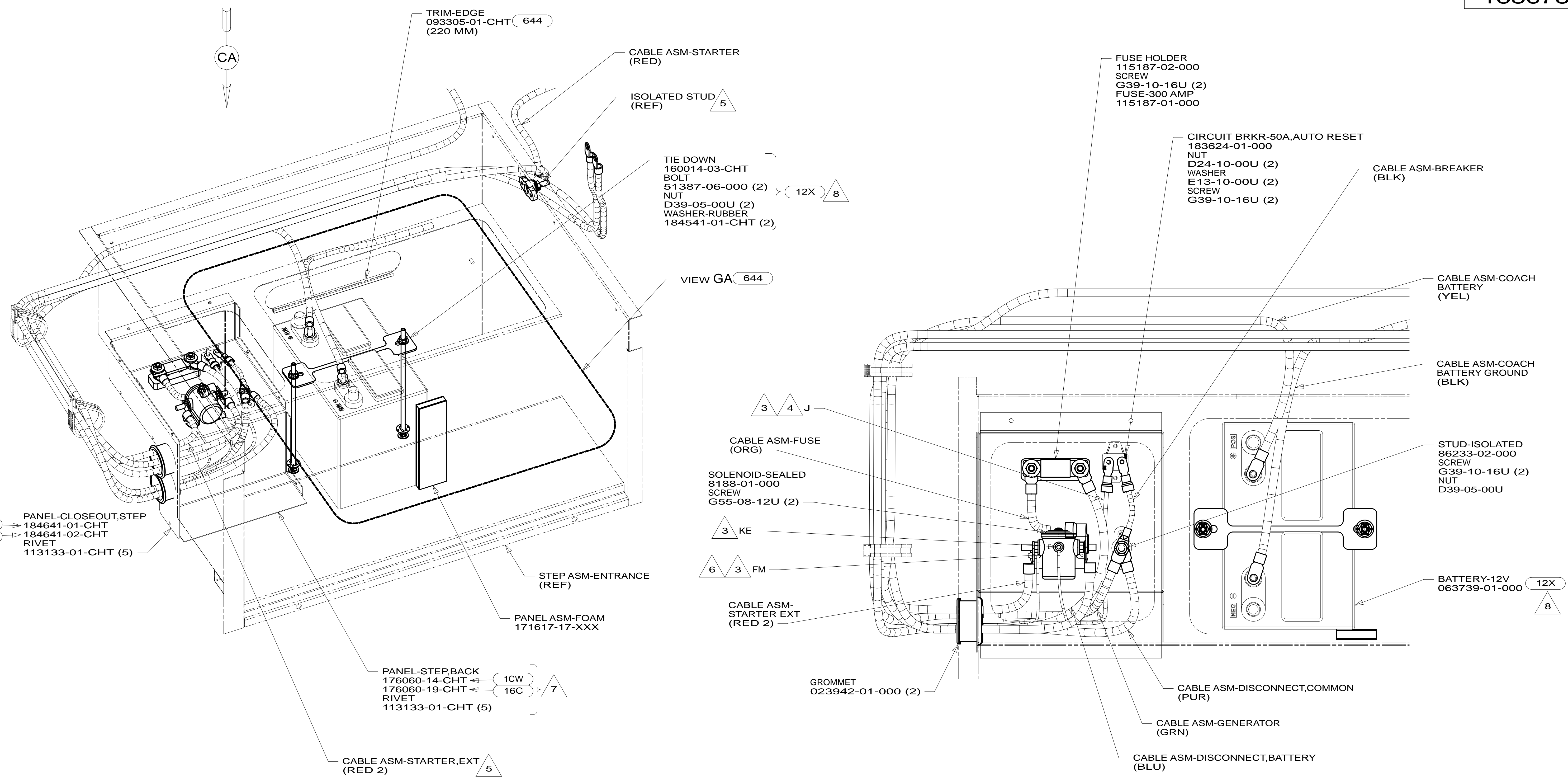
TITLE: **BATTERY INSTL**

SHEET 2 PART NO **183673** REV

FOR ELECTRICAL
TORQUE
SPECIFICATIONS
SEE DWG NO.
128783-01-000

X-X
FOR
ELECTRICAL
CALLOUTS
SEE DWG NO.
121339-01-000

* 183673 *



- 8 NOT USED WITH 644
 - 7 MOUNT ELECTRICAL COMPONENTS TO PANELS AND CONNECT CABLES TO THE COMPONENTS. PANELS WILL BE MOUNTED TO STEP BOX IN MOTORHOME PLANT AFTER FLOOR IS SET.
 - 6 SECURE WITH SOLENOID MOUNTING SCREWS.
 - 5 CABLE ASM-STARTER,EXT (RED 2) WILL BE CONNECTED TO ISOLATED STUD ON CHASSIS IN MOTORHOME PLANT AFTER ALL CONNECTIONS IN BATTERY BOX ARE COMPLETED AND STEP ASM IS INSTALLED AFTER FLOOR IS SET.
 - 4 WIRE MARKED WITH ORANGE TAPE.
 - 3 WIRES ARE PART OF WIRE ASM-CHASSIS
2. BATTERY CABLES ARE NOT TO BE ROUTED OVER BATTERY FILL CAPS.
 1. SEE WIRING INSTL-CHASSIS FOR ADDITIONAL INFORMATION.
- NOTES:

VIEW CA

- 644 GREAT ALASKAN RENTAL PACKAGE
- 12X BATTERY-ONE
- 16C FORD CHASSIS-11,500# GVWR
- 1CW CHEVY CHASSIS 12,300 LB.GVWR
- 265 CODES/STANDARDS-CSA/CMVSS
- 1B1 CODES/STANDARDS USA

FOR ELECTRICAL TORQUE SPECIFICATIONS SEE DWG NO. 128783-01-000

FOR ELECTRICAL CALLOUTS SEE DWG NO. 121339-01-000

FIRST USED

14 300-SERIES

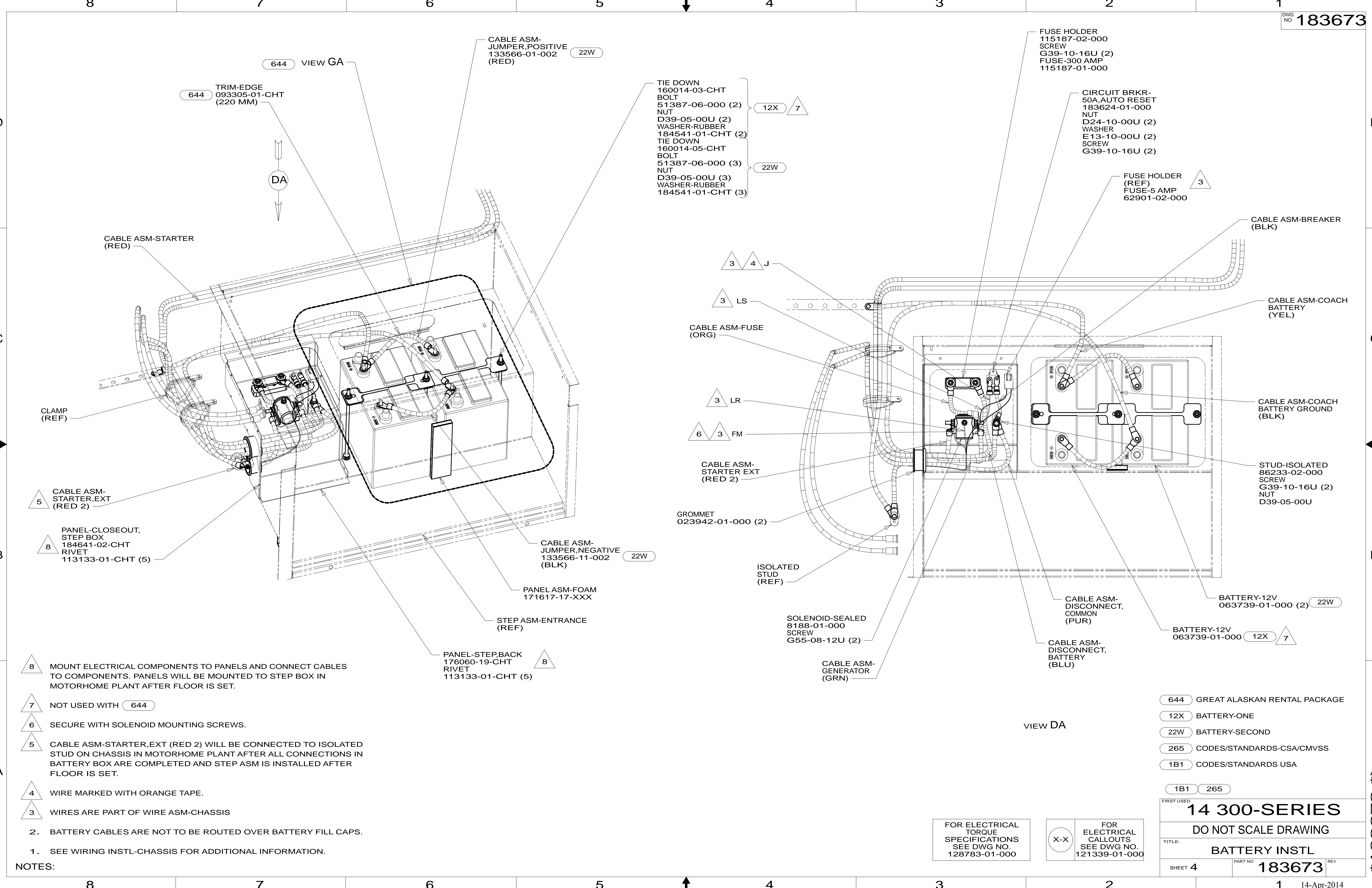
DO NOT SCALE DRAWING

TITLE: **BATTERY INSTL**

SHEET 3 PART NO **183673** REV

14-Apr-2014

* 183673 *



CABLE ASM-JUMPER, POSITIVE
133566-01-002 (RED) 22W

FUSE HOLDER
115187-02-000
SCREW
G39-10-16U (2)
FUSE-300 AMP
115187-01-000

TIE DOWN
160014-03-CHT
BOLT
51387-06-000 (2) 12X 7
NUT
D39-05-00U (2)
WASHER-RUBBER
184541-01-CHT (2)
TIE DOWN
160014-05-CHT
BOLT
51387-06-000 (3) 22W
NUT
D39-05-00U (3)
WASHER-RUBBER
184541-01-CHT (3)

CIRCUIT BRKR-
50A, AUTO RESET
183624-01-000
NUT
D24-10-00U (2)
WASHER
E13-10-00U (2)
SCREW
G39-10-16U (2)

FUSE HOLDER (REF)
FUSE-5 AMP
62901-02-000 3

CABLE ASM-BREAKER (BLK)

CABLE ASM-COACH BATTERY (YEL)

CABLE ASM-COACH BATTERY GROUND (BLK)

STUD-ISOLATED
86233-02-000
SCREW
G39-10-16U (2)
NUT
D39-05-00U

BATTERY-12V
063739-01-000 (2) 22W

BATTERY-12V
063739-01-000 12X 7

CABLE ASM-DISCONNECT, COMMON (PUR)

CABLE ASM-DISCONNECT, BATTERY (BLU)

CABLE ASM-GENERATOR (GRN)

SOLENOID-SEALED
8188-01-000
SCREW
G55-08-12U (2)

ISOLATED STUD (REF)

GROMMET
023942-01-000 (2)

CABLE ASM-STARTER EXT (RED 2)

6 3 FM

3 LR

3 LS

3 4 J

CABLE ASM-FUSE (ORG)

CABLE ASM-JUMPER, NEGATIVE
133566-11-002 (BLK) 22W

PANEL ASM-FOAM
171617-17-XXX

STEP ASM-ENTRANCE (REF)

PANEL-STEP, BACK
176060-19-CHT RIVET
113133-01-CHT (5) 8

644 VIEW GA

644 TRIM-EDGE
093305-01-CHT (220 MM)

DA

CABLE ASM-STARTER (RED)

CLAMP (REF)

5 CABLE ASM-STARTER, EXT (RED 2)

8 PANEL-CLOSEOUT, STEP BOX
184641-02-CHT RIVET
113133-01-CHT (5)

8 MOUNT ELECTRICAL COMPONENTS TO PANELS AND CONNECT CABLES TO COMPONENTS. PANELS WILL BE MOUNTED TO STEP BOX IN MOTORHOME PLANT AFTER FLOOR IS SET.

7 NOT USED WITH 644

6 SECURE WITH SOLENOID MOUNTING SCREWS.

5 CABLE ASM-STARTER, EXT (RED 2) WILL BE CONNECTED TO ISOLATED STUD ON CHASSIS IN MOTORHOME PLANT AFTER ALL CONNECTIONS IN BATTERY BOX ARE COMPLETED AND STEP ASM IS INSTALLED AFTER FLOOR IS SET.

4 WIRE MARKED WITH ORANGE TAPE.

3 WIRES ARE PART OF WIRE ASM-CHASSIS

2. BATTERY CABLES ARE NOT TO BE ROUTED OVER BATTERY FILL CAPS.

1. SEE WIRING INSTL-CHASSIS FOR ADDITIONAL INFORMATION.

NOTES:

VIEW DA

- 644 GREAT ALASKAN RENTAL PACKAGE
- 12X BATTERY-ONE
- 22W BATTERY-SECOND
- 265 CODES/STANDARDS-CSA/CMVSS
- 1B1 CODES/STANDARDS USA

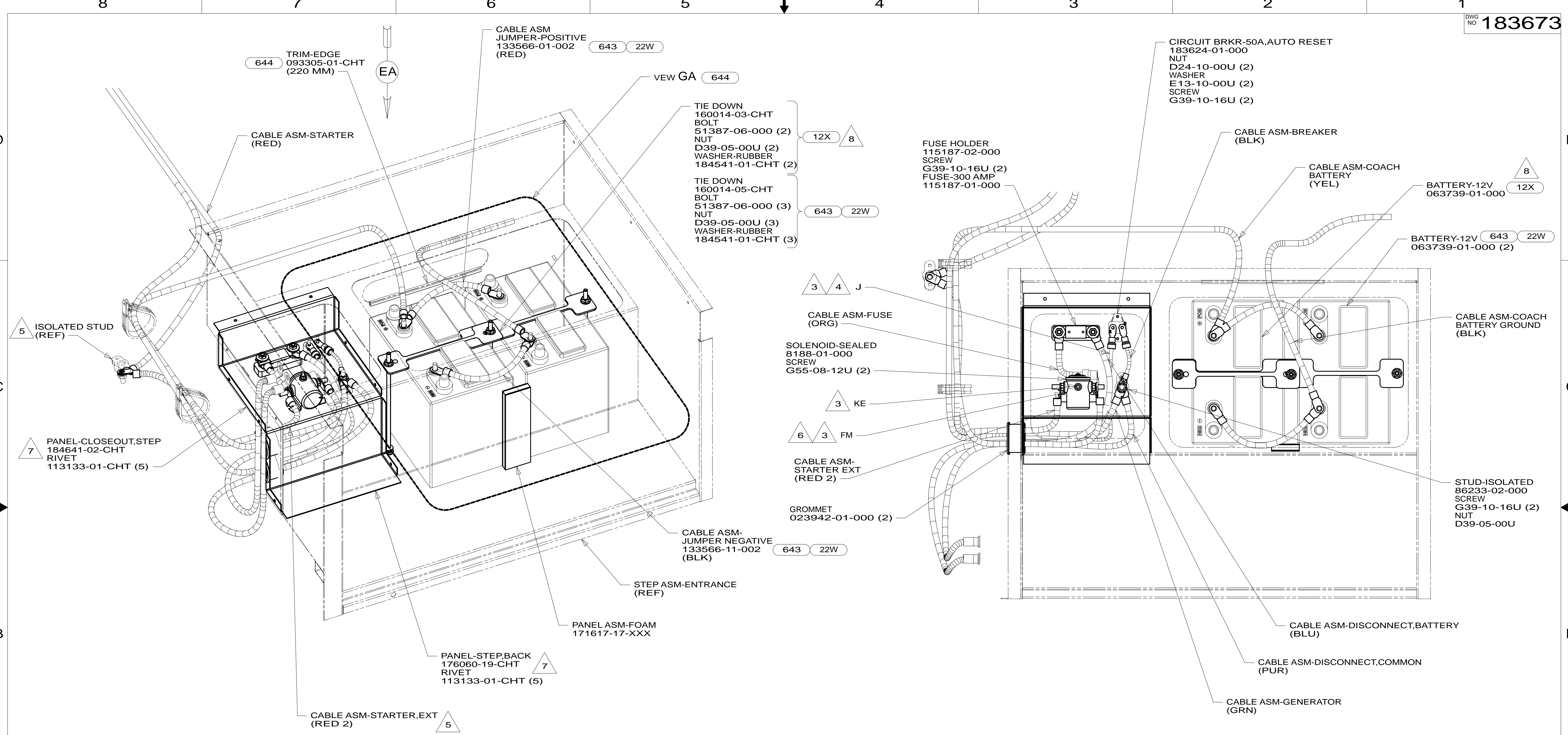
1B1 265

FOR ELECTRICAL TORQUE SPECIFICATIONS SEE DWG NO. 128783-01-000

FOR ELECTRICAL CALLOUTS SEE DWG NO. 121339-01-000

FIRST USED	
14 300-SERIES	
DO NOT SCALE DRAWING	
TITLE: BATTERY INSTL	
SHEET 4	PART NO 183673 REV
14-Apr-2014	

* 183673 * A



- 8 NOT USED WITH 644
 - 7 MOUNT ELECTRICAL COMPONENTS TO PANELS AND CONNECT CABLES TO THE COMPONENTS. PANELS WILL BE MOUNTED TO STEP BOX IN MOTORHOME PLANT AFTER FLOOR IS SET.
 - 6 SECURE WITH SOLENOID MOUNTING SCREWS.
 - 5 CABLE ASM-STARTER,EXT (RED 2) WILL BE CONNECTED TO ISOLATED STUD ON CHASSIS IN MOTORHOME PLANT AFTER ALL CONNECTIONS IN BATTERY BOX ARE COMPLETED AND STEP ASM IS INSTALLED AFTER FLOOR IS SET.
 - 4 WIRE MARKED WITH ORANGE TAPE.
 - 3 WIRES ARE PART OF WIRE ASM-CHASSIS
2. BATTERY CABLES ARE NOT TO BE ROUTED OVER BATTERY FILL CAPS.
 1. SEE WIRING INSTL-CHASSIS FOR ADDITIONAL INFORMATION.
- NOTES:

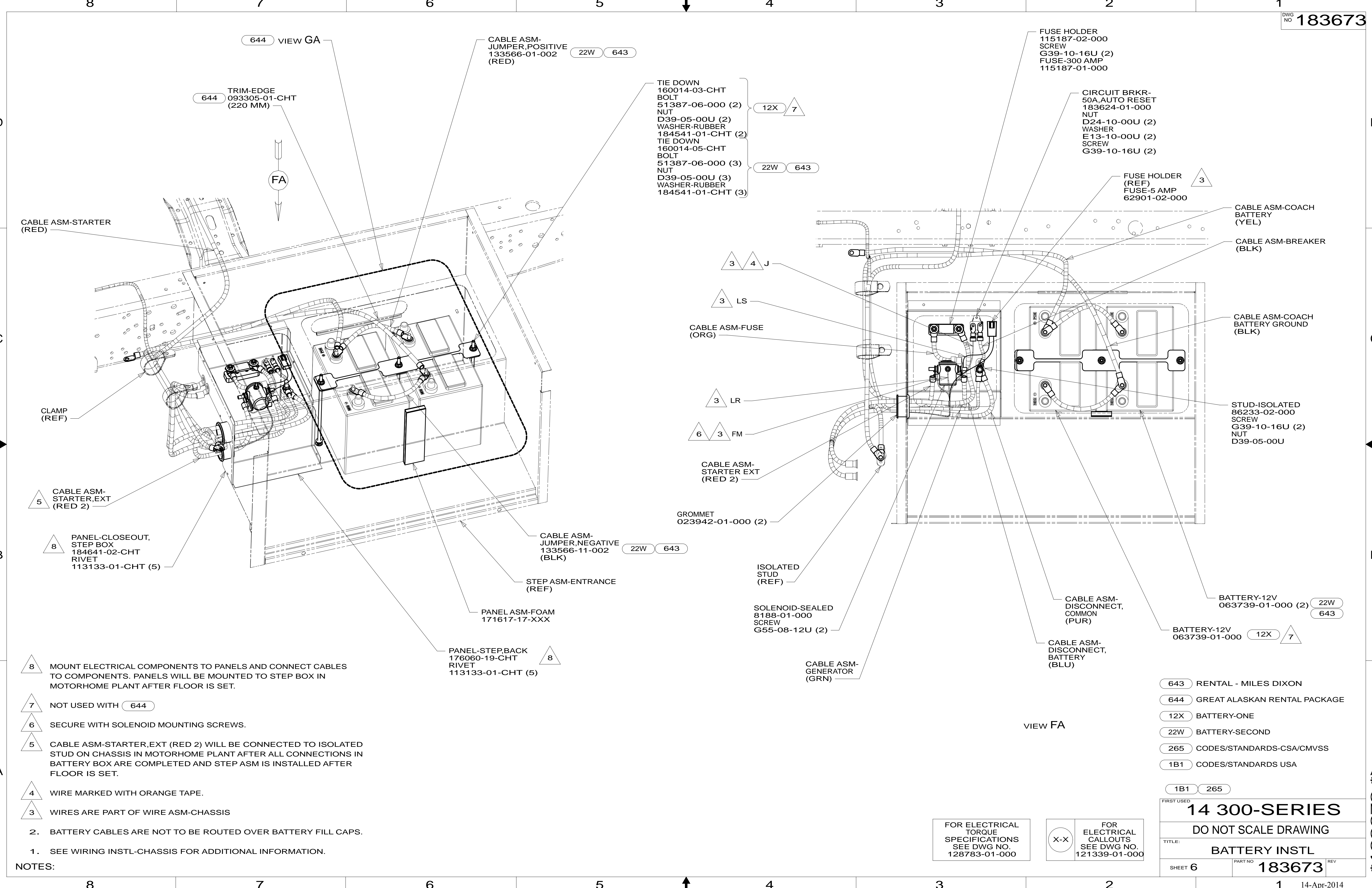
- VIEW EA
- 22W BATTERY-SECOND
 - 643 RENTAL - MILES DIXON
 - 644 GREAT ALASKAN RENTAL PACKAGE
 - 12X BATTERY-ONE
 - 165 FORD-11,500# GVWR,5.4 ENGINE
 - 16C FORD CHASSIS-11,500#GVWR
 - 265 CODES/STANDARDS-CSA/CMVSS
 - 1B1 CODES/STANDARDS USA

FOR ELECTRICAL TORQUE SPECIFICATIONS SEE DWG NO. 128783-01-000

FOR ELECTRICAL CALLOUTS SEE DWG NO. 121339-01-000

FIRST USED	
14 300-SERIES	
DO NOT SCALE DRAWING	
TITLE: BATTERY INSTL	
SHEET 5	PART NO 183673 REV

* 183673 *



8
7
6
5
4
3
2
1

D
C
B
A

- 8 MOUNT ELECTRICAL COMPONENTS TO PANELS AND CONNECT CABLES TO COMPONENTS. PANELS WILL BE MOUNTED TO STEP BOX IN MOTORHOME PLANT AFTER FLOOR IS SET.
- 7 NOT USED WITH 644
- 6 SECURE WITH SOLENOID MOUNTING SCREWS.
- 5 CABLE ASM-STARTER,EXT (RED 2) WILL BE CONNECTED TO ISOLATED STUD ON CHASSIS IN MOTORHOME PLANT AFTER ALL CONNECTIONS IN BATTERY BOX ARE COMPLETED AND STEP ASM IS INSTALLED AFTER FLOOR IS SET.
- 4 WIRE MARKED WITH ORANGE TAPE.
- 3 WIRES ARE PART OF WIRE ASM-CHASSIS
2. BATTERY CABLES ARE NOT TO BE ROUTED OVER BATTERY FILL CAPS.
1. SEE WIRING INSTL-CHASSIS FOR ADDITIONAL INFORMATION.
- NOTES:

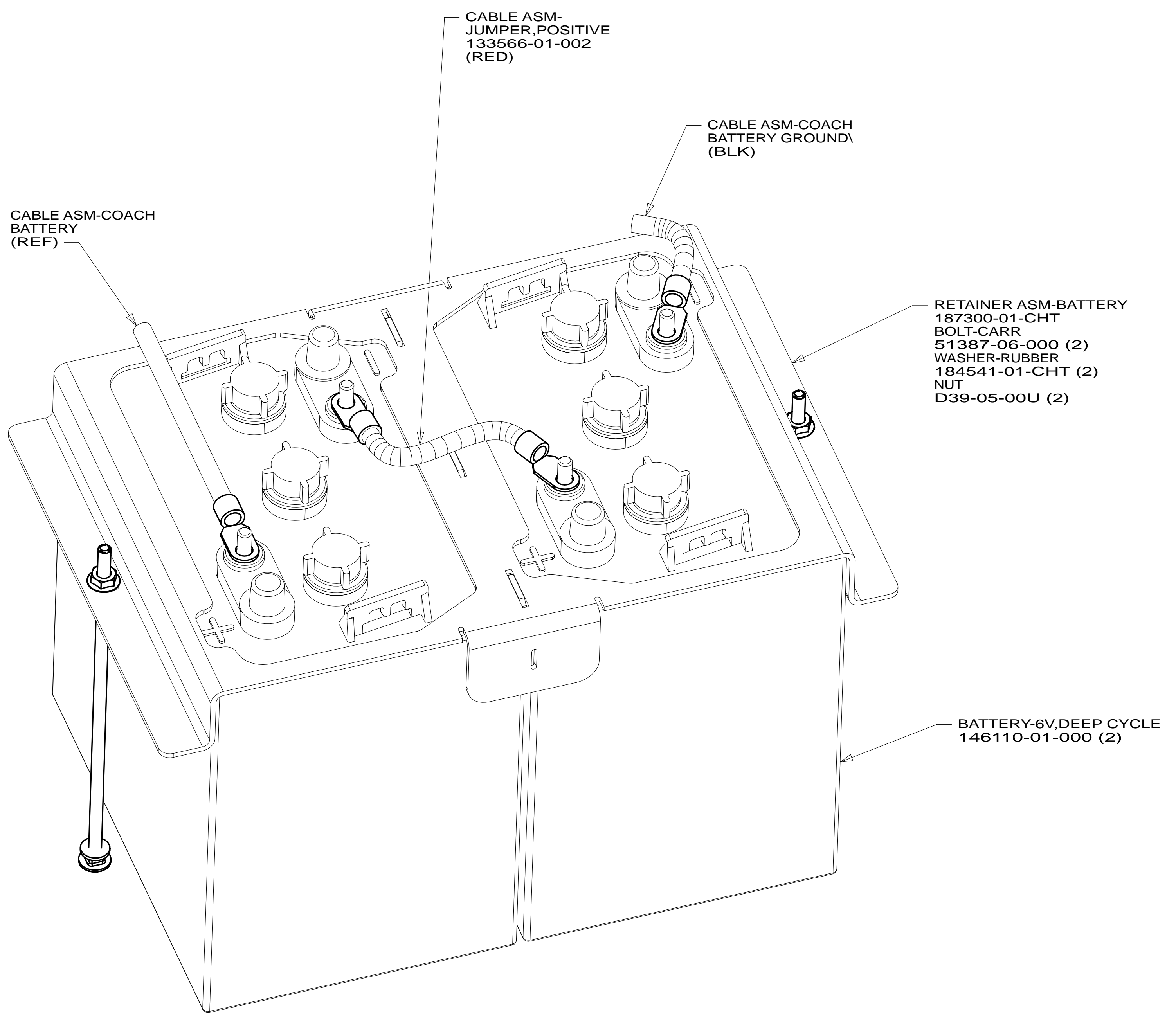
- 643 RENTAL - MILES DIXON
- 644 GREAT ALASKAN RENTAL PACKAGE
- 12X BATTERY-ONE
- 22W BATTERY-SECOND
- 265 CODES/STANDARDS-CSA/CMVSS
- 1B1 CODES/STANDARDS USA

FIRST USED	
14 300-SERIES	
DO NOT SCALE DRAWING	
TITLE: BATTERY INSTL	
SHEET 6	PART NO 183673 REV

FOR ELECTRICAL TORQUE SPECIFICATIONS SEE DWG NO. 128783-01-000

FOR ELECTRICAL CALLOUTS SEE DWG NO. 121339-01-000

* 183673 * A



VIEW GA

- 644 GREAT ALASKAN RENTAL PACKAGE
- 265 CODES/STANDARDS-CSA/CMVSS
- 1B1 CODES/STANDARDS USA

1B1 265 644

FIRST USED **14 300-SERIES**

DO NOT SCALE DRAWING

TITLE: **BATTERY INSTL**

SHEET 7 PART NO **183673** REV

FOR ELECTRICAL TORQUE SPECIFICATIONS SEE DWG NO. 128783-01-000

X-X FOR ELECTRICAL CALLOUTS SEE DWG NO. 121339-01-000