



DANGER

Danger of electrical shock, burns or death. Always remove all power sources before attempting any repair, service or diagnostic work. Power can be present from shore power, generator, inverter or battery. All power sources must be disabled and secured before performing any service.

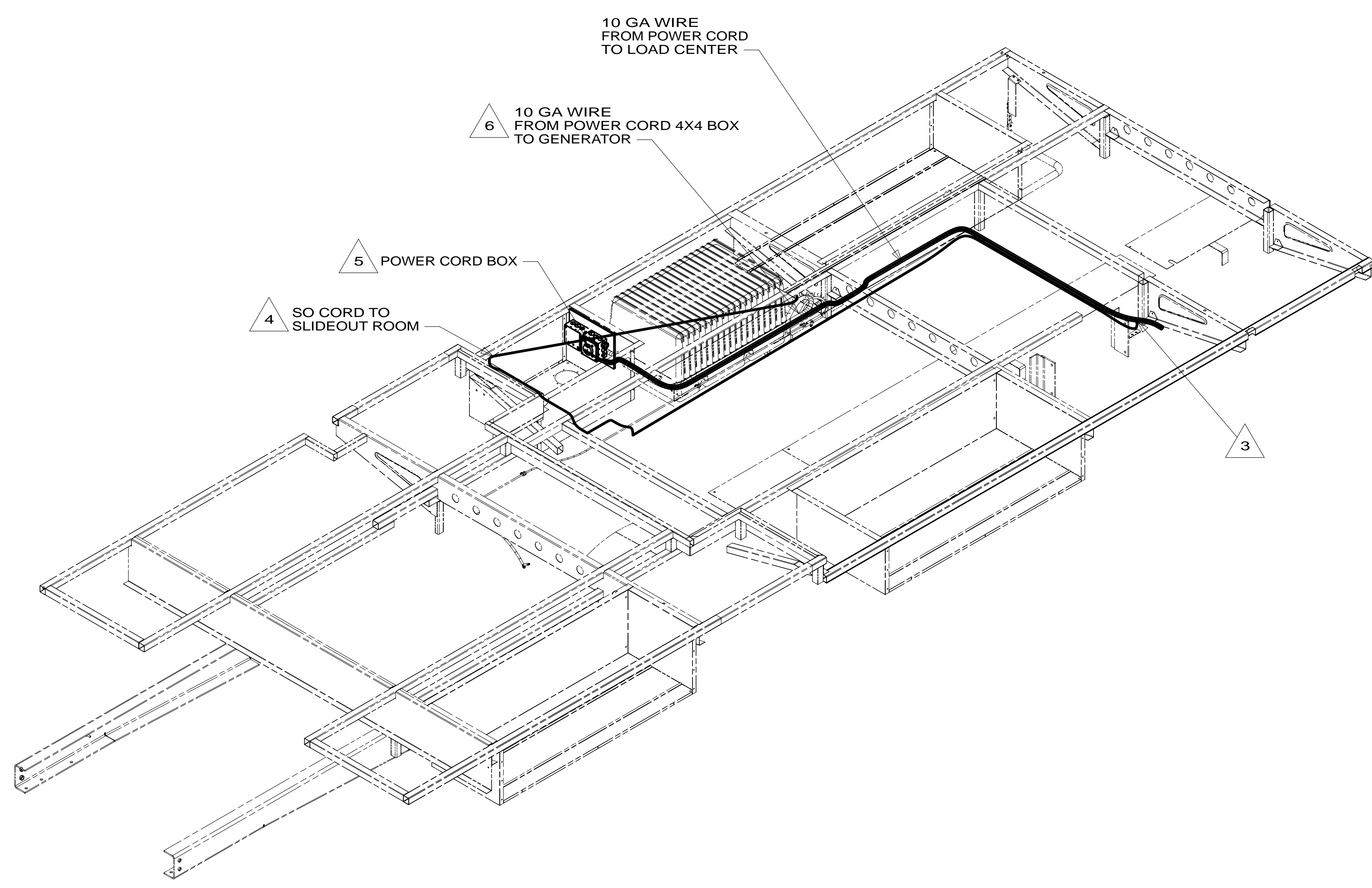


CAUTION

If you lack the skills, tools or equipment to perform diagnostic or repair work leave such work to an authorized Winnebago Industries dealer or other qualified shop.

DRAWING NO.	FEATURE	SHEET
183614-01	-----	1,2,3,4
183614-02	-----	1,2,4,5
183614-11	1B1 12D	-----
183614-15	265 12D	-----

RELEASE	REV/DATE	DWG NO	183614
REV ZONE	REVISION RECORD	DATE	DFT-ORIG



- 12D ELECTRICAL SYSTEM 30 AMP
- 265 CODES/STANDARDS-CSA/CMVSS
- 1B1 CODES/STANDARDS USA
- 1B1 265

- NOTES:
1. AT MINIMUM ALL WIRES TO BE SUPPORTED AND SECURED PER CODE REQUIREMENTS. USE CLAMP 10495 OR 10497 OR WIRE TIE 8343 OR 108046 AND SCREW G67-XX-XXX OR G56-XX-XXX AS APPROPRIATE FOR INSTALLATION.
 2. ALL 110V WIRE TO BE CLAMPED WITH CLAMP 10497-05-000 WITHIN 200MM OF OUTLET BOXES, USE SCREW G67-10-12B.
- 6 SEE GENERATOR INSTL FOR ADDITIONAL INFORMATION.
- 5 SEE LOAD CENTER/ATS ASM FOR ADDITIONAL INFORMATION.
- 4 CORD IS PART OF WIRE ASM-CHASSIS.
- 3 ROUTE WIRE THRU FLOOR.

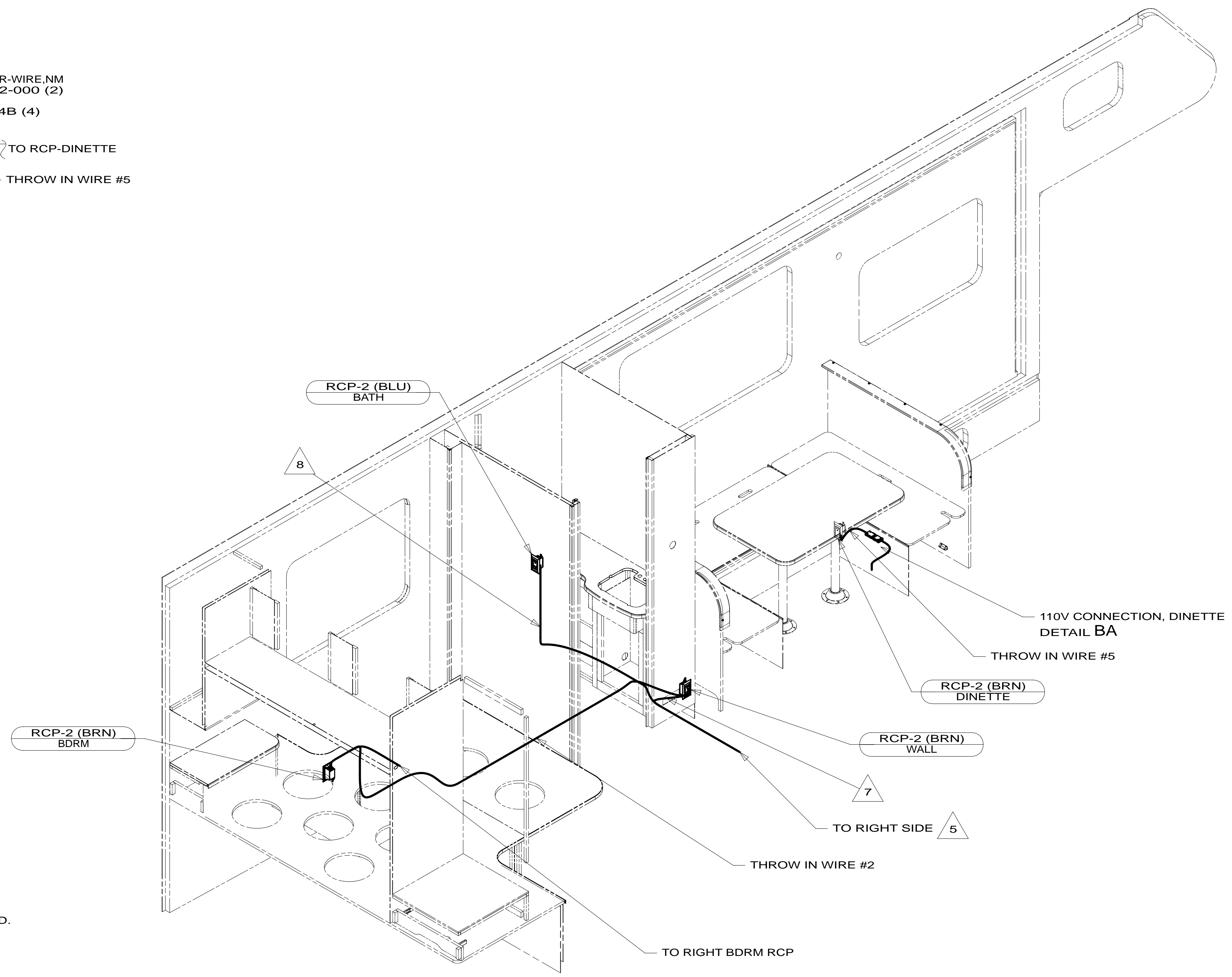
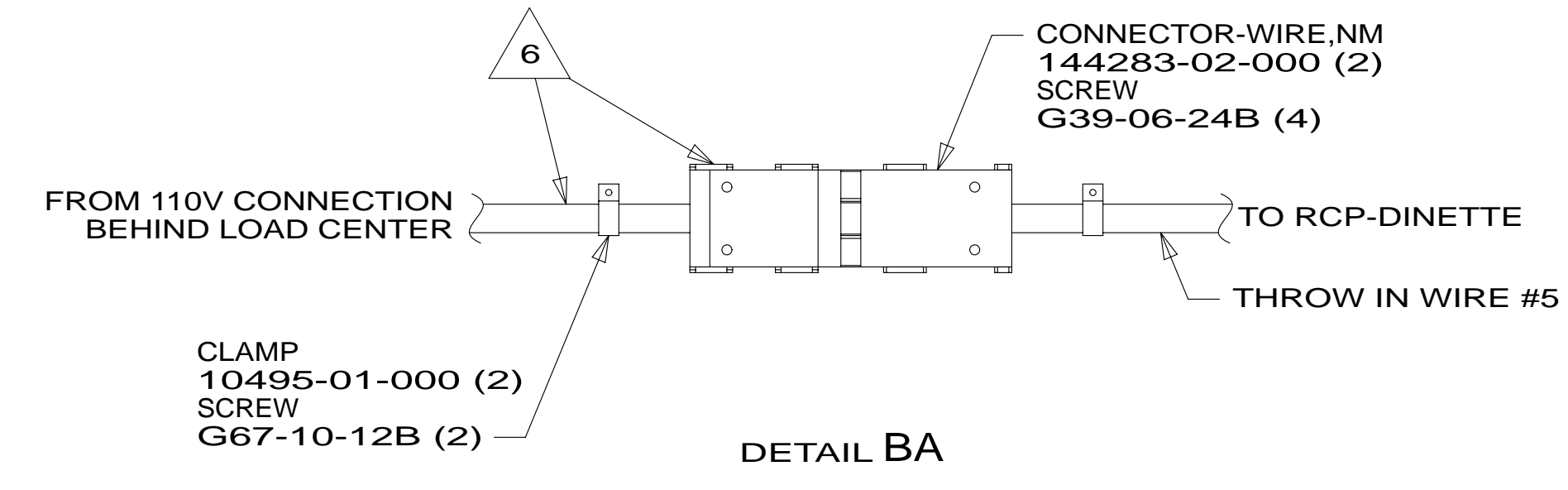
FOR ELECTRICAL TORQUE SPECIFICATIONS SEE DWG NO. 128783-01-000

FOR ELECTRICAL CALLOUTS SEE DWG NO. 121339-01-000

WINNEBAGO INDUSTRIES, INC. COPYRIGHT 2014

DFT-ORIG	ORIG. DATE
CHKR	ALL DIMENSIONS ARE IN MILLIMETERS
P.E.	
M.E.	FIRST USED
DSNR	14 331K/P
UNSPECIFIED TOLERANCES ARE:	
WHOLE DIM (X)	: 3
ONE-PLACE (X.X)	: 1.5
TWO-PLACE (X.XX)	: 0.50
ANGLE	: 1°
THIRD ANGLE PROJECTION	
DO NOT SCALE DRAWING	REFER TO ES0018 FOR FASTENER TIGHTENING GUIDELINES
TITLE: WIRING INSTL-BODY,110V	
SHEET 1 OF 5	PART NO 183614 REV
REF:	1 22-Jan-2014

* 183614 * A



- 8 LEAVE 1700 MM OF BLU CIRCUIT EXITING FROM FLOOR EXPOSED.
- 7 LEAVE 600 MM OF BOTH BRN WIRES EXITING FROM FLOOR EXPOSED.
- 6 CORD & CONNECTORS ARE PART OF WIRE ASM-CHASSIS.
- 5 ROUTE WIRE THRU FLOOR.

- 4. FOR MORE INFORMATION SEE WIRING DIAGRAM-BODY,110V.
- 3. ALL GROUND WIRE TO BE COVERED WITH TUBING 8041-02-000.
- 2. ALL 110V WIRE TO BE CLAMPED WITH CLAMP 10497-05-000 WITHIN 200MM OF OUTLET BOXES, USE SCREW G67-10-12B.
- 1. AT MINIMUM ALL WIRES TO BE SUPPORTED AND SECURED PER CODE REQUIREMENTS. USE CLAMP 10495 OR 10497 OR WIRE TIE 8343 OR 108046 AND SCREW G67-XX-XXX OR G56-XX-XXX AS APPROPRIATE FOR INSTALLATION.

NOTES:

265 CODES/STANDARDS-CSA/CMVSS
1B1 CODES/STANDARDS USA

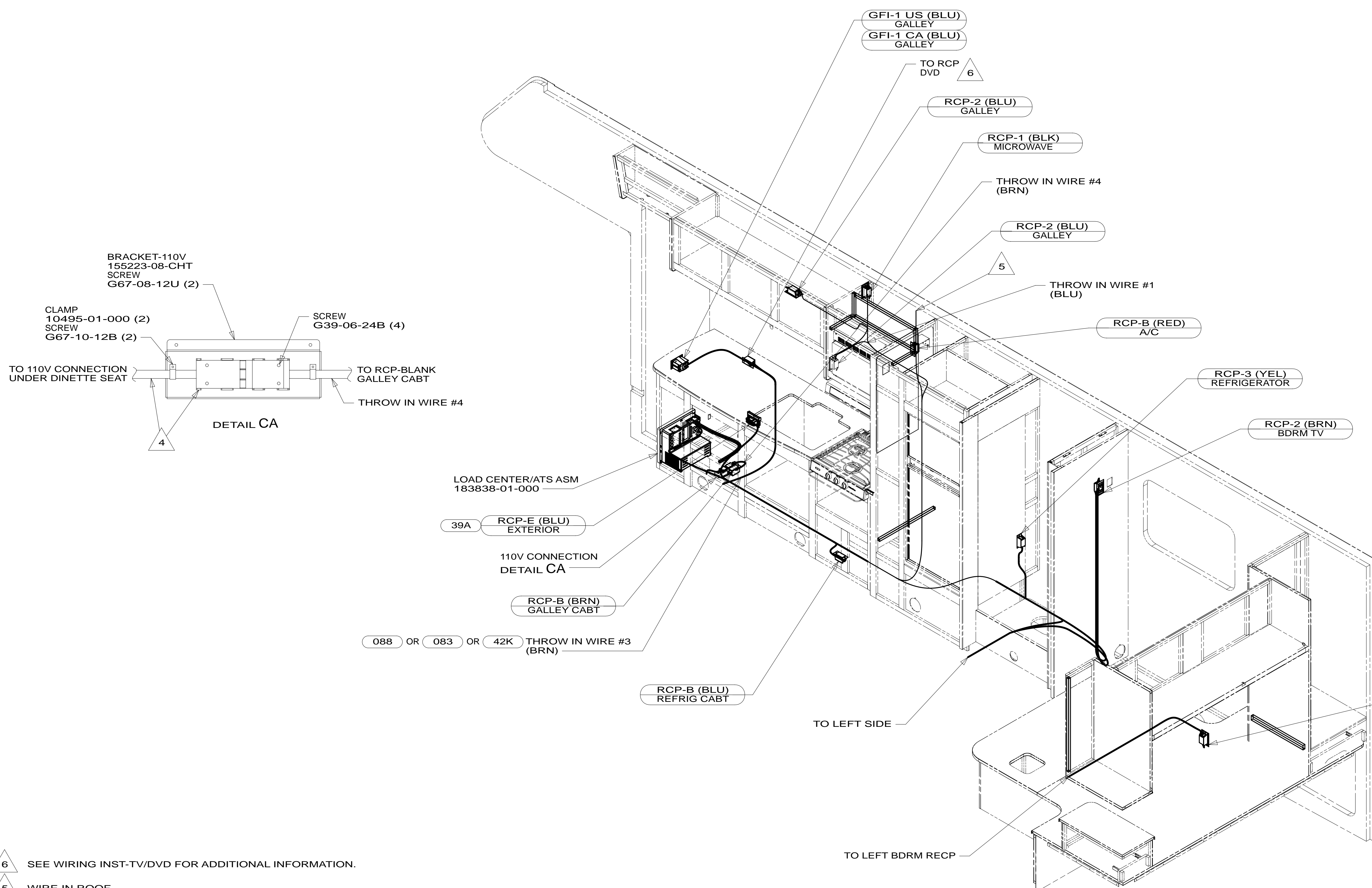
1B1 265

FIRST USED	14 331K/P	
TITLE:	DO NOT SCALE DRAWING	
	WIRING INSTL-BODY,110V	
SHEET 2	PART NO 183614	REV

FOR ELECTRICAL TORQUE SPECIFICATIONS SEE DWG NO. 128783-01-000

FOR ELECTRICAL CALLOUTS SEE DWG NO. 121339-01-000

* 183614 * A



- NOTES:
- 1. AT MINIMUM ALL WIRES TO BE SUPPORTED AND SECURED PER CODE REQUIREMENTS. USE CLAMP 10495 OR 10497 OR WIRE TIE 8343 OR 108046 AND SCREW G67-XX-XXX OR G56-XX-XXX AS APPROPRIATE FOR INSTALLATION.
 - 2. ALL 110V WIRE TO BE CLAMPED WITH CLAMP 10497-05-000 WITHIN 200MM OF OUTLET BOXES, USE SCREW G67-10-12B.
 - 3. ALL GROUND WIRE TO BE COVERED WITH TUBING 8041-02-000.
- 6 SEE WIRING INST-TV/DVD FOR ADDITIONAL INFORMATION.
5 WIRE IN ROOF.
4 CORD AND CONNECTORS ARE PART OF WIRE ASM-CHASSIS.

088 OR 083 OR 42K THROW IN WIRE #3 (BRN)

331K ONLY

FOR ELECTRICAL TORQUE SPECIFICATIONS SEE DWG NO. 128783-01-000

FOR ELECTRICAL CALLOUTS SEE DWG NO. 121339-01-000

- 088 CONVENIENCE & APPEAR PK-TAUP
- 42K EXT RECEPTACLE DPLX 120VAC
- 083 CONVENIENCE & APPEARANCE PKG
- 39A EXT RECEPTACLE DPLX 120VAC
- 265 CODES/STANDARDS-CSA/CMVSS
- 1B1 CODES/STANDARDS USA

1B1 265

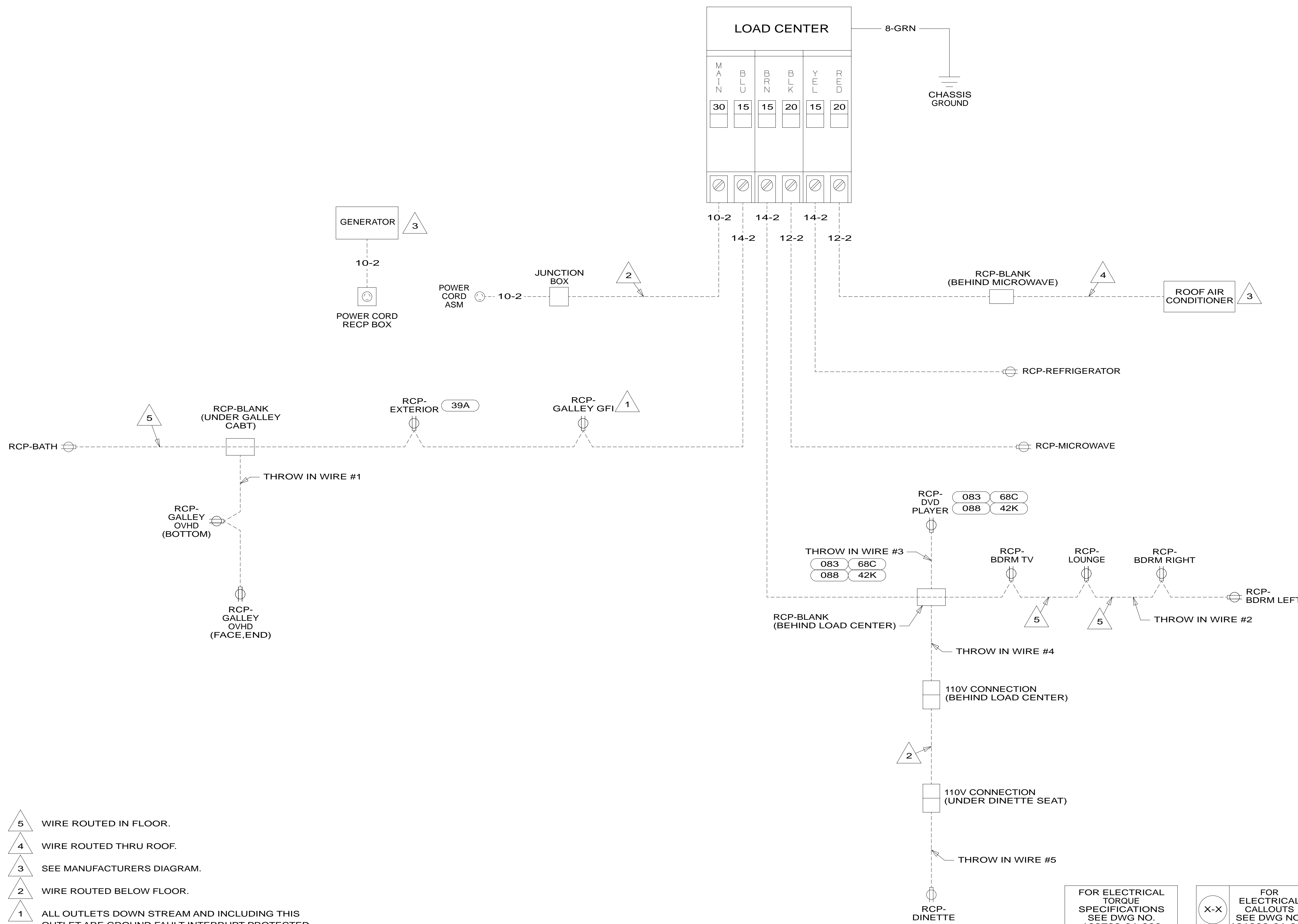
FIRST USED		14 331K/P	
DO NOT SCALE DRAWING			
TITLE: WIRING INSTL-BODY, 110V			
SHEET 3	PART NO	183614	REV

* 183614 * A

LOAD CENTER

MAIN	BLU	BRN	BLK	YEL	RED
30	15	15	20	15	20

CHASSIS GROUND



- NOTES:
- 5 WIRE ROUTED IN FLOOR.
 - 4 WIRE ROUTED THRU ROOF.
 - 3 SEE MANUFACTURERS DIAGRAM.
 - 2 WIRE ROUTED BELOW FLOOR.
 - 1 ALL OUTLETS DOWN STREAM AND INCLUDING THIS OUTLET ARE GROUND FAULT INTERRUPT PROTECTED.

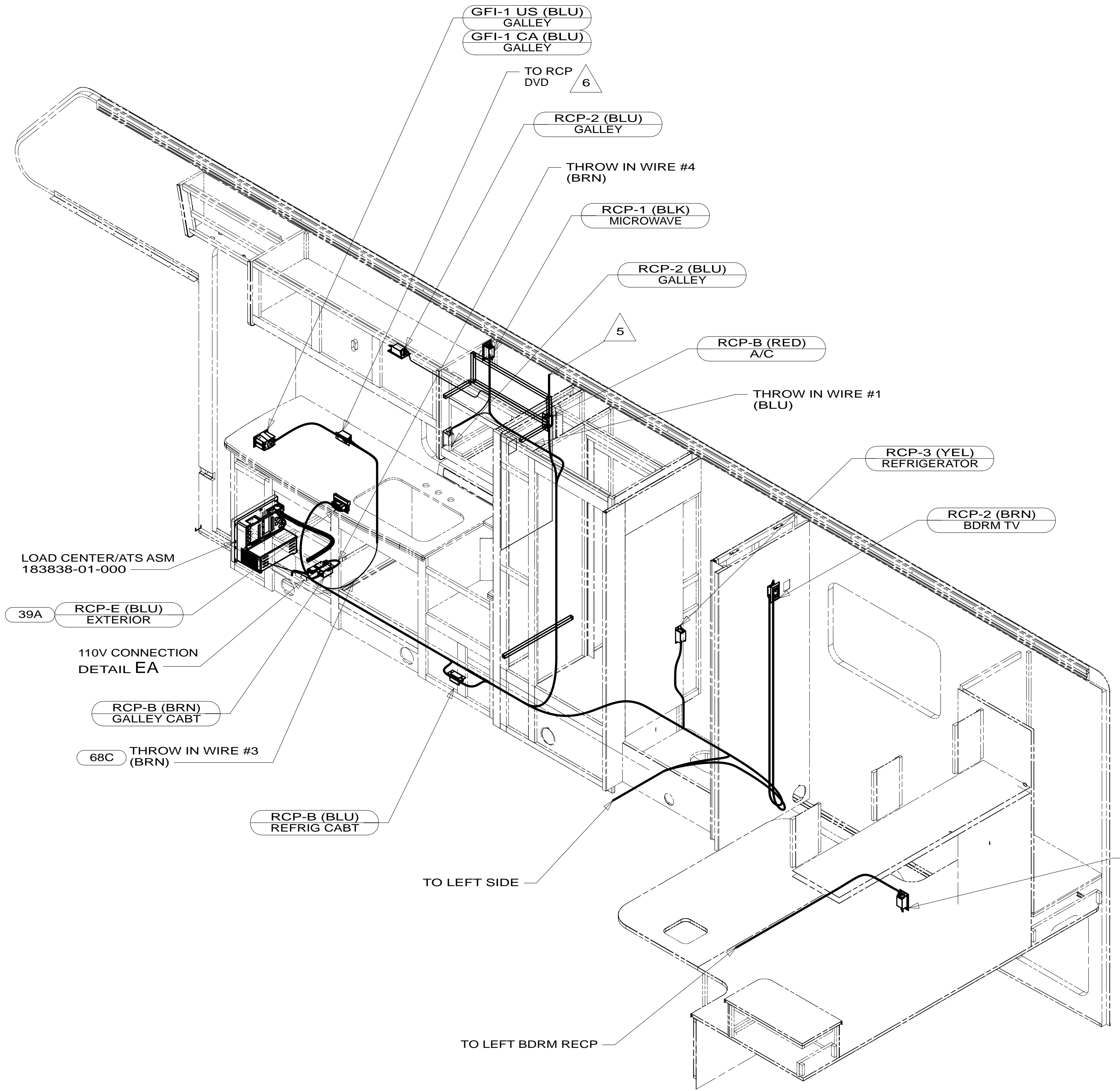
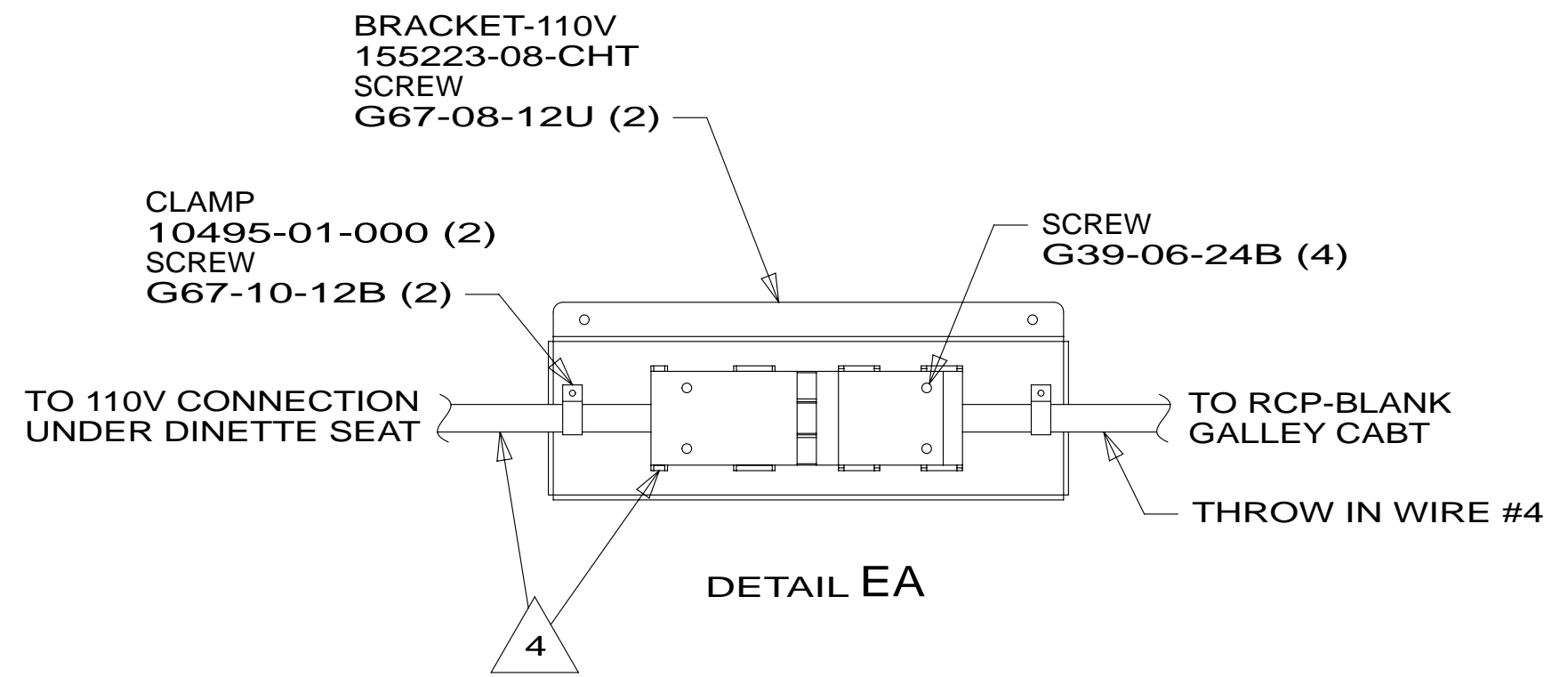
- 68C TV-39" COLOR,STEREO W/REMOTE
- 088 CONVENIENCE & APPEAR PK-TAUP
- 42K TV-32" COLOR,STEREO W/REMOTE
- 083 CONVENIENCE & APPEARANCE PKG
- 39A EXT RECEPTACLE DPLX 120VAC
- 265 CODES/STANDARDS-CSA/CMVSS
- 1B1 CODES/STANDARDS USA

FOR ELECTRICAL TORQUE SPECIFICATIONS SEE DWG NO. 128783-01-000

FOR ELECTRICAL CALLOUTS SEE DWG NO. 121339-01-000

FIRST USED	14 331K/P	
DO NOT SCALE DRAWING		
TITLE: WIRING INSTL-BODY, 110V		
SHEET 4	PART NO 183614	REV

* 183614 * A



- NOTES:
- 6 SEE WIRING INST-TV/DVD FOR ADDITIONAL INFORMATION.
 - 5 WIRE IN ROOF.
 - 4 CORD AND CONNECTORS ARE PART OF WIRE ASM-CHASSIS.
 - 3. ALL GROUND WIRE TO BE COVERED WITH TUBING 8041-02-000.
 - 2. ALL 110V WIRE TO BE CLAMPED WITH CLAMP 10497-05-000 WITHIN 200MM OF OUTLET BOXES, USE SCREW G67-10-12B.
 - 1. AT MINIMUM ALL WIRES TO BE SUPPORTED AND SECURED PER CODE REQUIREMENTS. USE CLAMP 10495 OR 10497 OR WIRE TIE 8343 OR 108046 AND SCREW G67-XX-XXX OR G56-XX-XXX AS APPROPRIATE FOR INSTALLATION.

- 68C TV-39" COLOR, STEREO W/REMOTE
- 083 CONVENIENCE & APPEARANCE PKG
- 39A EXT RECEPTACLE DPLX 120VAC
- 265 CODES/STANDARDS-CSA/CMVSS
- 1B1 CODES/STANDARDS USA

FIRST USED		14 331K/P	
DO NOT SCALE DRAWING			
TITLE: WIRING INSTL-BODY, 110V			
SHEET 5	PART NO	183614	REV

FOR ELECTRICAL TORQUE SPECIFICATIONS SEE DWG NO. 128783-01-000

FOR ELECTRICAL CALLOUTS SEE DWG NO. 121339-01-000

331KP

* 183614 * A