



DANGER

Danger of electrical shock, burns or death. Always remove all power sources before attempting any repair, service or diagnostic work. Power can be present from shore power, generator, inverter or battery. All power sources must be disabled and secured before performing any service.

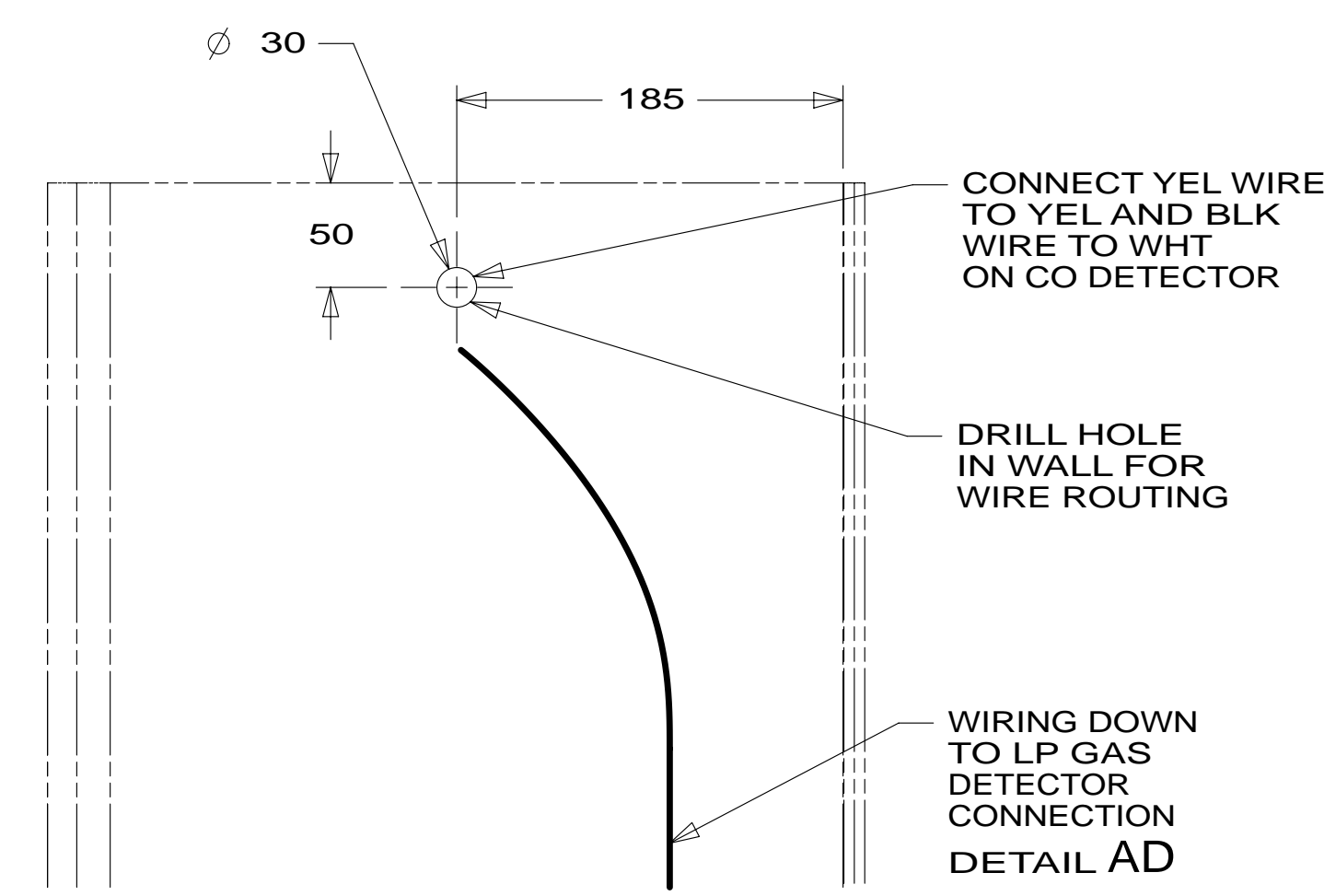
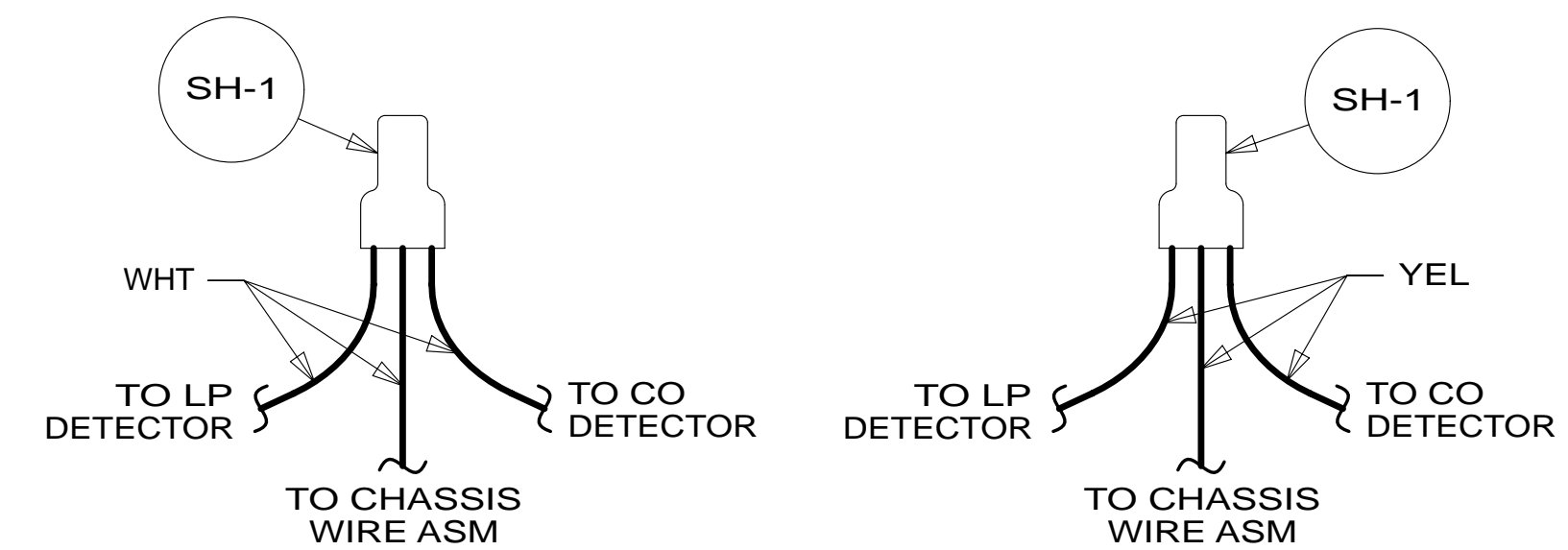
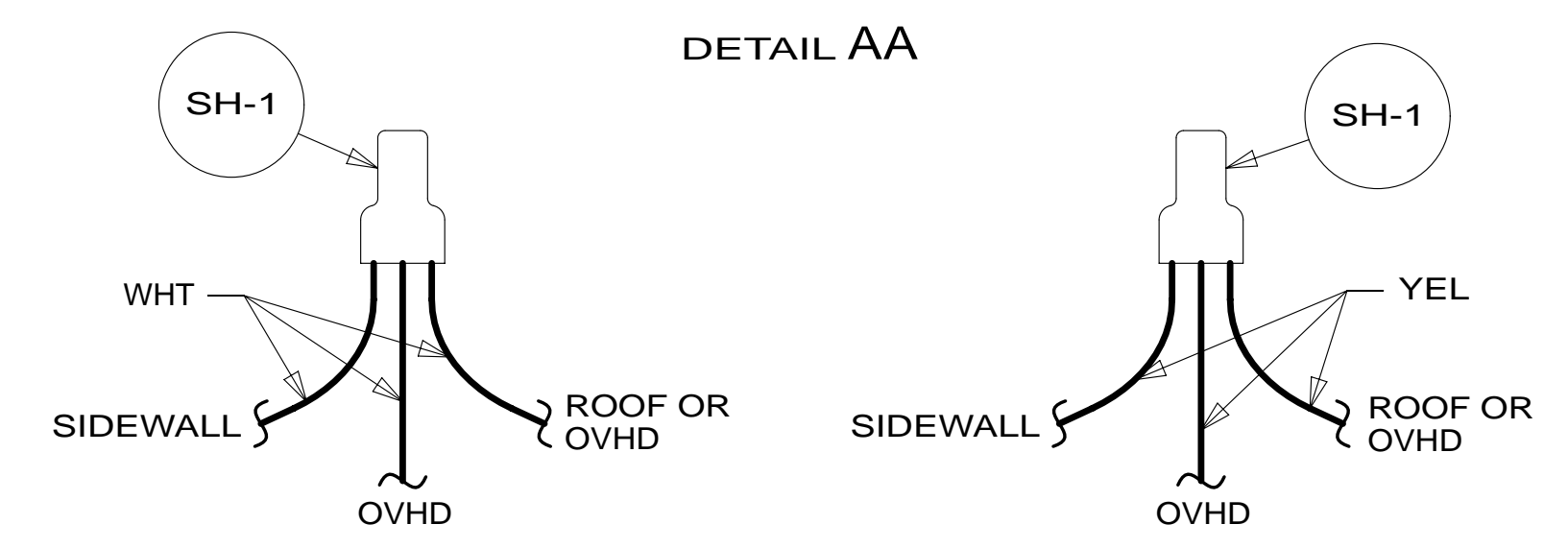
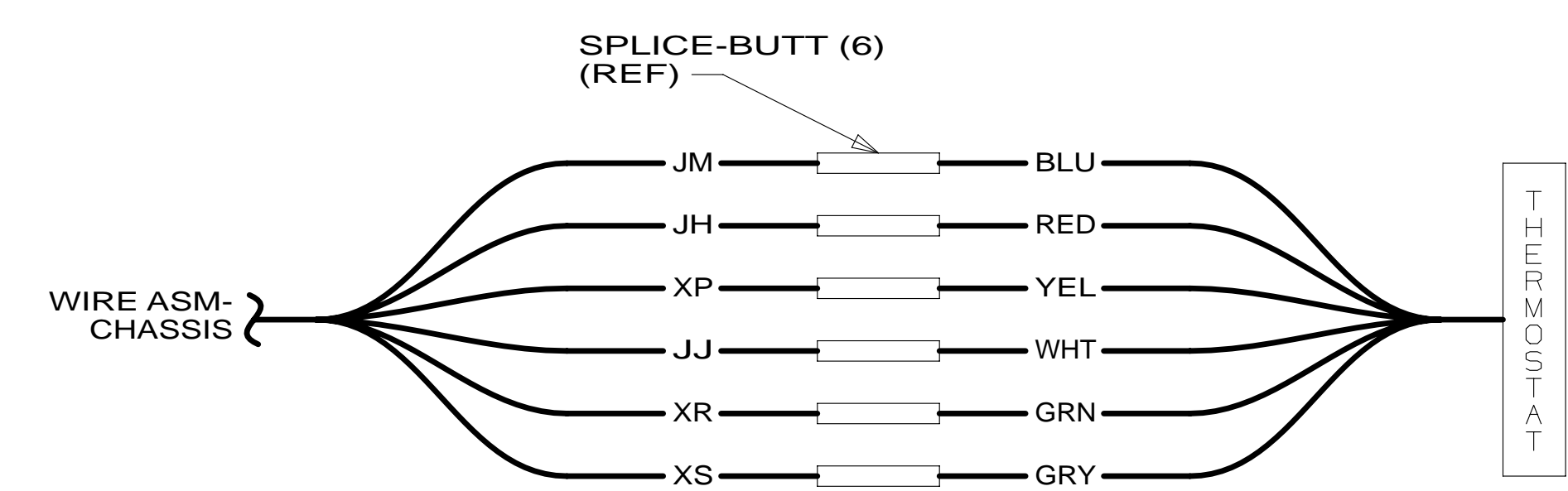
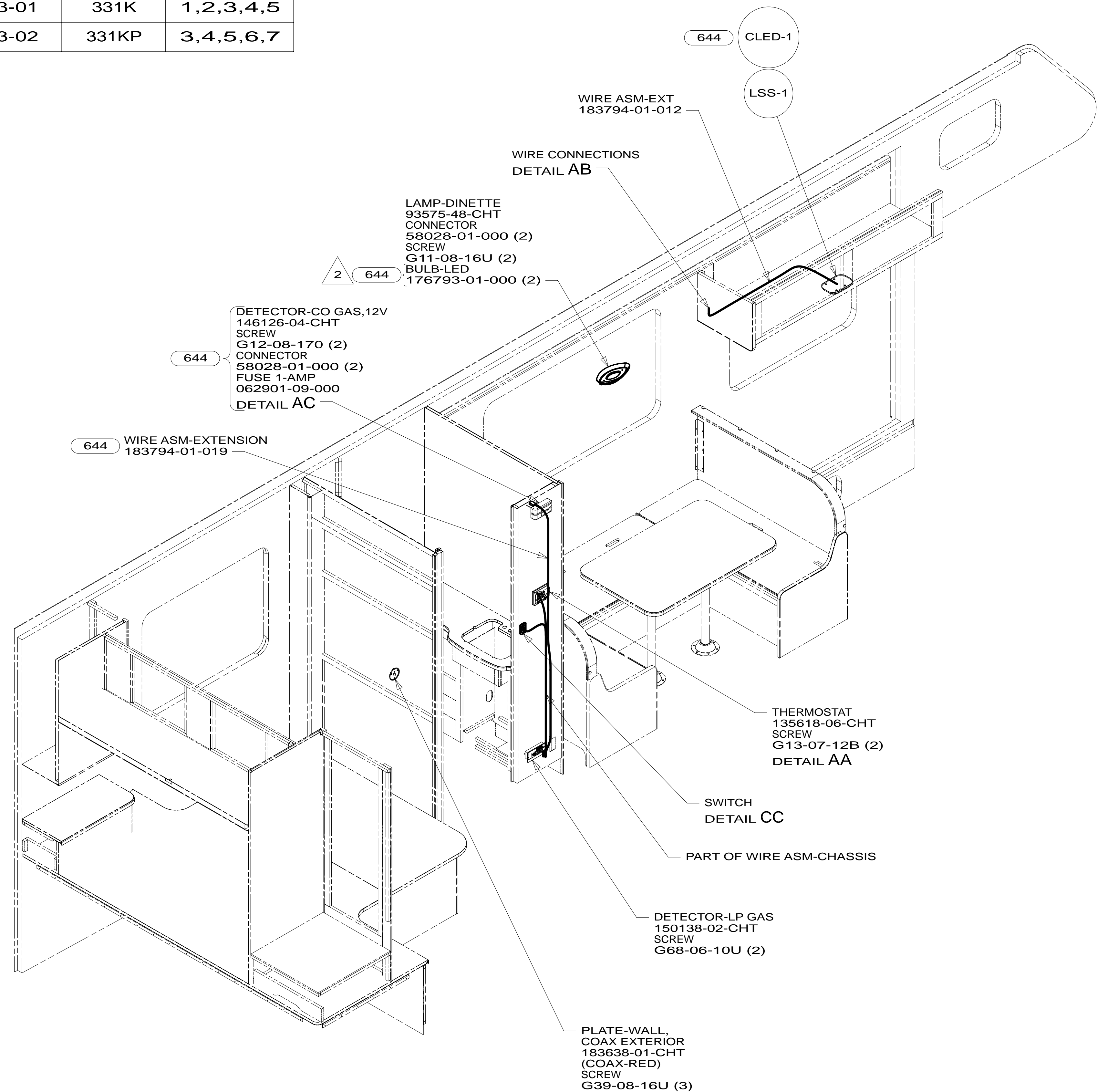


CAUTION

If you lack the skills, tools or equipment to perform diagnostic or repair work leave such work to an authorized Winnebago Industries dealer or other qualified shop.

DRAWING NO.	MODEL	SHEET
183613-01	331K	1,2,3,4,5
183613-02	331KP	3,4,5,6,7

RELEASE	REV/DATE	DWG NO	183613
REV ZONE	REVISION RECORD	DATE	DTR-ORIG



- 644 GREAT ALASKAN RENTAL PACKAGE
- 265 CODES/STANDARDS-CSA/CMVSS
- 1B1 CODES/STANDARDS USA

1B1 265

WINNEBAGO

COPYRIGHT 2014
WINNEBAGO
INDUSTRIES, INC.

DTR	ORIG. DATE
CHKR	ALL DIMENSIONS ARE IN MILLIMETERS
P.E.	FIRST USED
M.E.	14 331K/P
DSNR	MATERIAL:
UNSPECIFIED TOLERANCES ARE:	
WHOLE DIM (X)	: 3
ONE-PLACE (X.X)	: 1.5
TWO-PLACE (X.XX)	: 0.50
ANGLE	: 1°
THIRD ANGLE PROJECTION	
DO NOT SCALE DRAWING	REFER TO ES0018 FOR FASTENER TIGHTENING GUIDELINES
TITLE: WIRING INSTL-BODY,12V	
SHEET 1 OF 7	PART NO 183613 REV

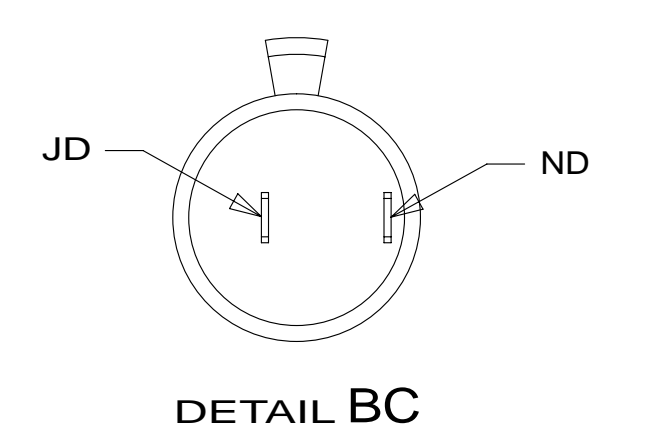
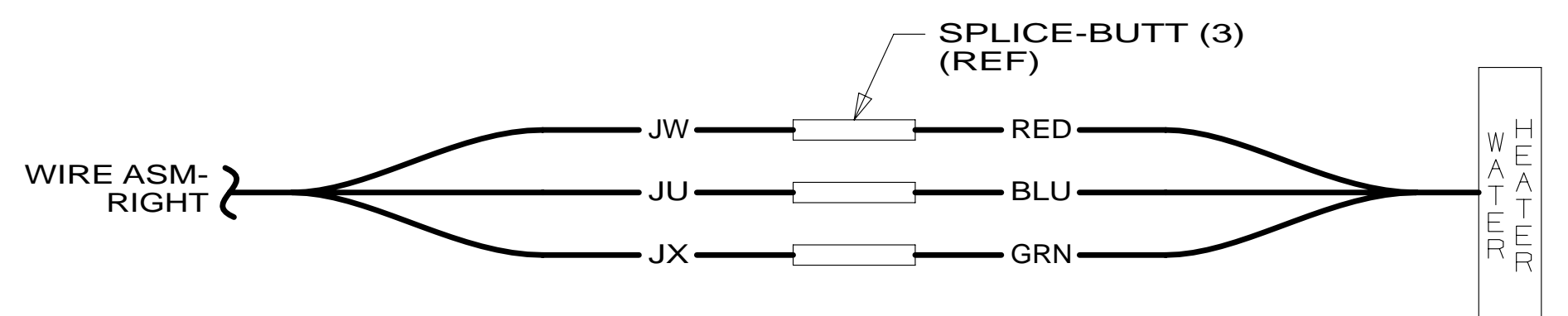
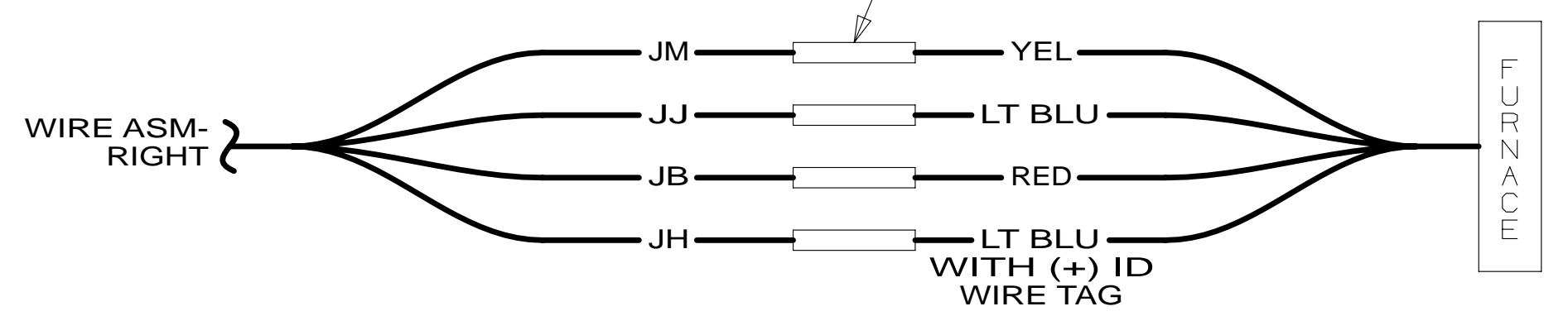
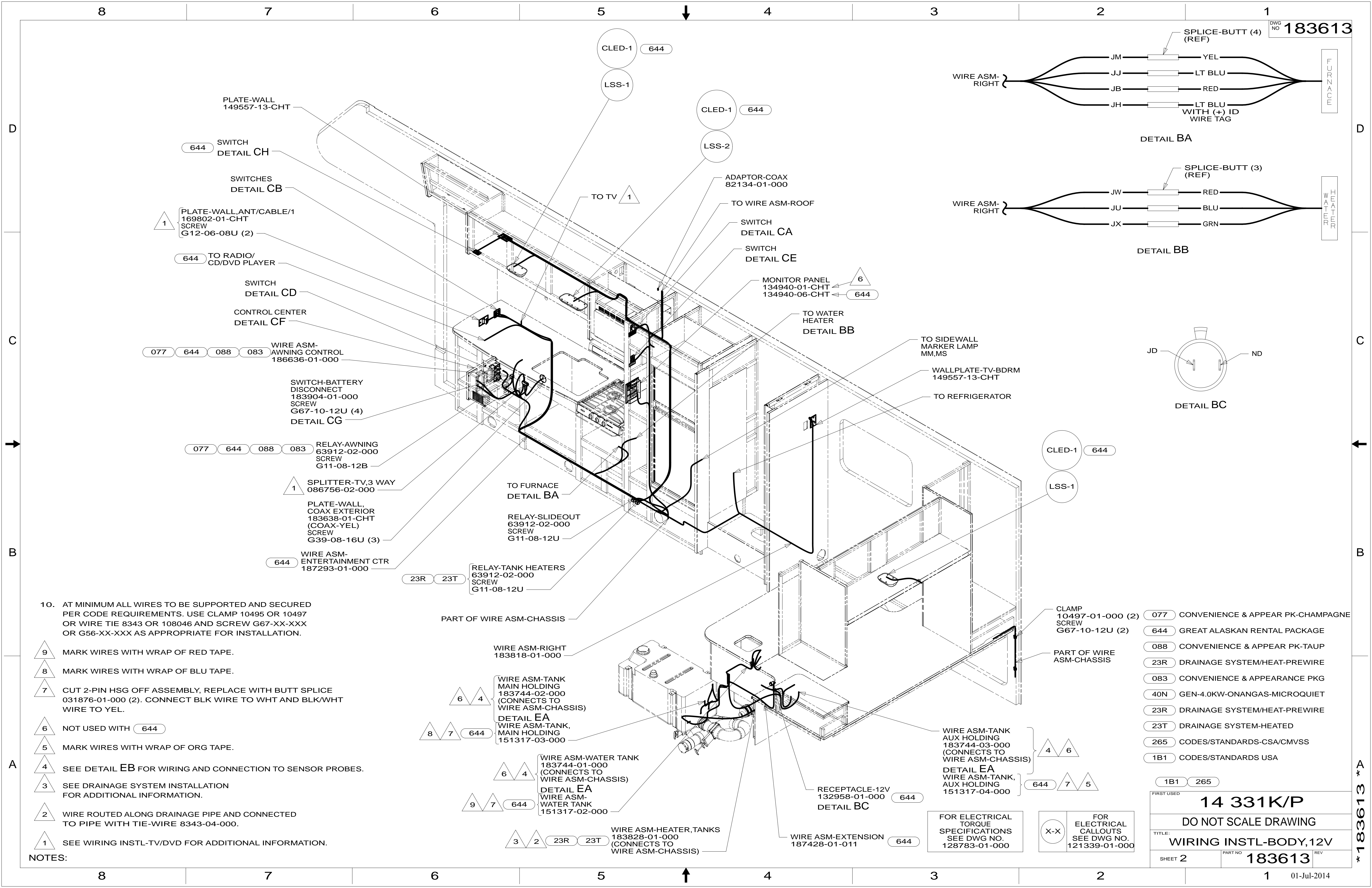
REF: 1 01-Jul-2014

3. AT MINIMUM ALL WIRES TO BE SUPPORTED AND SECURED PER CODE REQUIREMENTS. USE CLAMP 10495 OR 10497 OR WIRE TIE 8343 OR 108046 AND SCREW G67-XX-XXX OR G56-XX-XXX AS APPROPRIATE FOR INSTALLATION.
- 2 REMOVE BULB SUPPLIED WITH LAMP, SEND TO STOCK AS P/N 117805-02-000. REPLACE WITH LED BULB.
- 1 NOT USED WITH 644

FOR ELECTRICAL TORQUE SPECIFICATIONS SEE DWG NO. 128783-01-000

X-X FOR ELECTRICAL CALLOUTS SEE DWG NO. 121339-01-000

* 183613 *



10. AT MINIMUM ALL WIRES TO BE SUPPORTED AND SECURED PER CODE REQUIREMENTS. USE CLAMP 10495 OR 10497 OR WIRE TIE 8343 OR 108046 AND SCREW G67-XX-XXX OR G56-XX-XXX AS APPROPRIATE FOR INSTALLATION.

- 9 MARK WIRES WITH WRAP OF RED TAPE.
- 8 MARK WIRES WITH WRAP OF BLU TAPE.
- 7 CUT 2-PIN HSG OFF ASSEMBLY, REPLACE WITH BUTT SPLICE 031876-01-000 (2). CONNECT BLK WIRE TO WHT AND BLK/WHT WIRE TO YEL.
- 6 NOT USED WITH 644
- 5 MARK WIRES WITH WRAP OF ORG TAPE.
- 4 SEE DETAIL EB FOR WIRING AND CONNECTION TO SENSOR PROBES.
- 3 SEE DRAINAGE SYSTEM INSTALLATION FOR ADDITIONAL INFORMATION.
- 2 WIRE ROUTED ALONG DRAINAGE PIPE AND CONNECTED TO PIPE WITH TIE-WIRE 8343-04-000.
- 1 SEE WIRING INSTL-TV/DVD FOR ADDITIONAL INFORMATION.

- 077 CONVENIENCE & APPEAR PK-CHAMPAGNE
- 644 GREAT ALASKAN RENTAL PACKAGE
- 088 CONVENIENCE & APPEAR PK-TAUP
- 23R DRAINAGE SYSTEM/HEAT-PREWIRE
- 083 CONVENIENCE & APPEARANCE PKG
- 40N GEN-4.0KW-ONANGAS-MICROQUIET
- 23R DRAINAGE SYSTEM/HEAT-PREWIRE
- 23T DRAINAGE SYSTEM-HEATED
- 265 CODES/STANDARDS-CSA/CMVSS
- 1B1 CODES/STANDARDS USA

FOR ELECTRICAL TORQUE SPECIFICATIONS SEE DWG NO. 128783-01-000

FOR ELECTRICAL CALLOUTS SEE DWG NO. 121339-01-000

FIRST USED **14 331K/P**
DO NOT SCALE DRAWING
 TITLE: **WIRING INSTL-BODY,12V**
 SHEET 2 PART NO **183613** REV
 01-Jul-2014

* 183613 * A

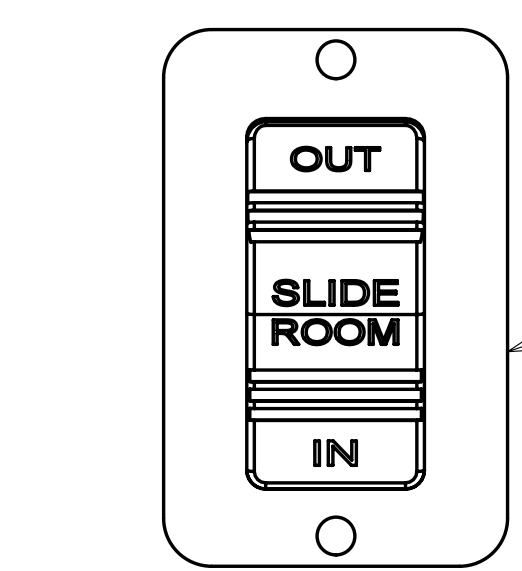
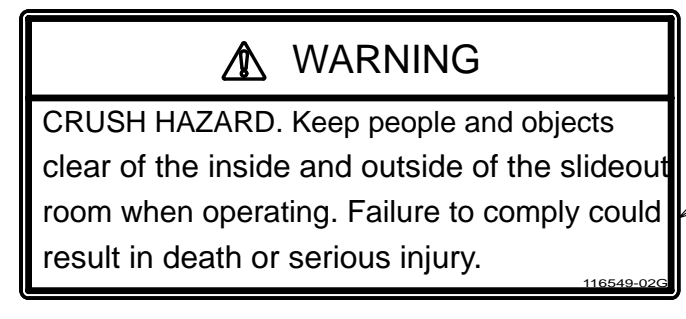
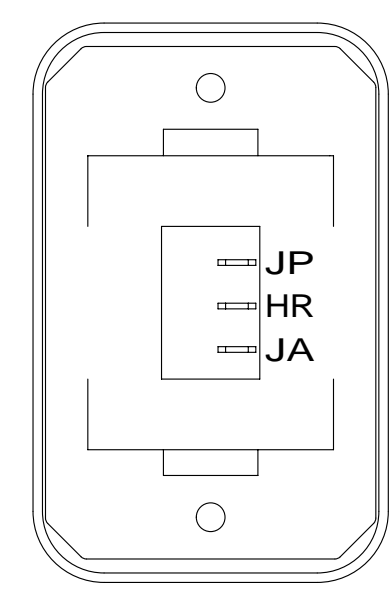


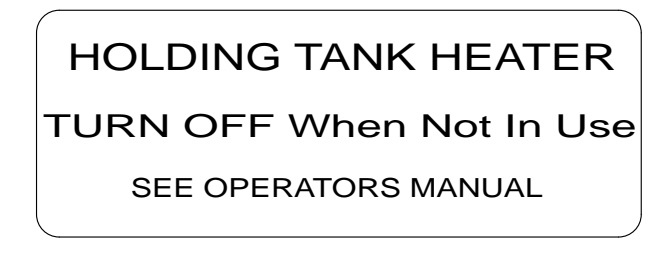
PLATE-SWITCH
144363-02-CHT
SWITCH
108357-06-000
ACTUATOR
108356-24-CHT
SCREW
G11-08-08U (2)



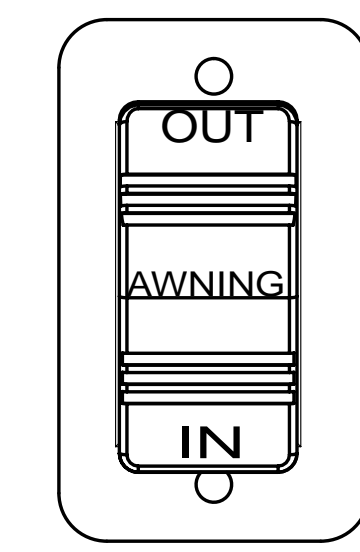
DETAIL CA



SWITCH-ROCKER
135740-06-CHT
SWITCH-BASE
135741-01-CHT
SWITCH-BEZEL
135742-01-CHT
SCREW
G11-08-08U (2)
LABEL-SWITCH
134563-01-CHT



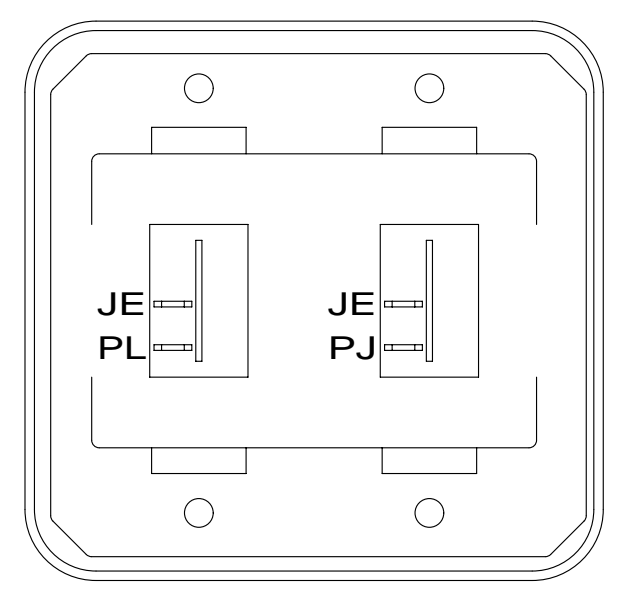
DETAIL CE 23T 23R



SWITCH-ROCKER
108357-06-000
ACTUATOR
108356-12-CHT
SWITCH-BLANK
096241-03-000
PLATE-SWITCH
098351-07-CHT
SCREW
G11-06-10U (2)

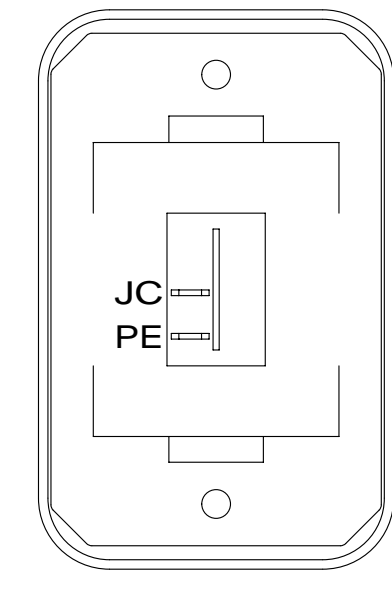
- 083 088 644 077
- 52F

DETAIL CD 2



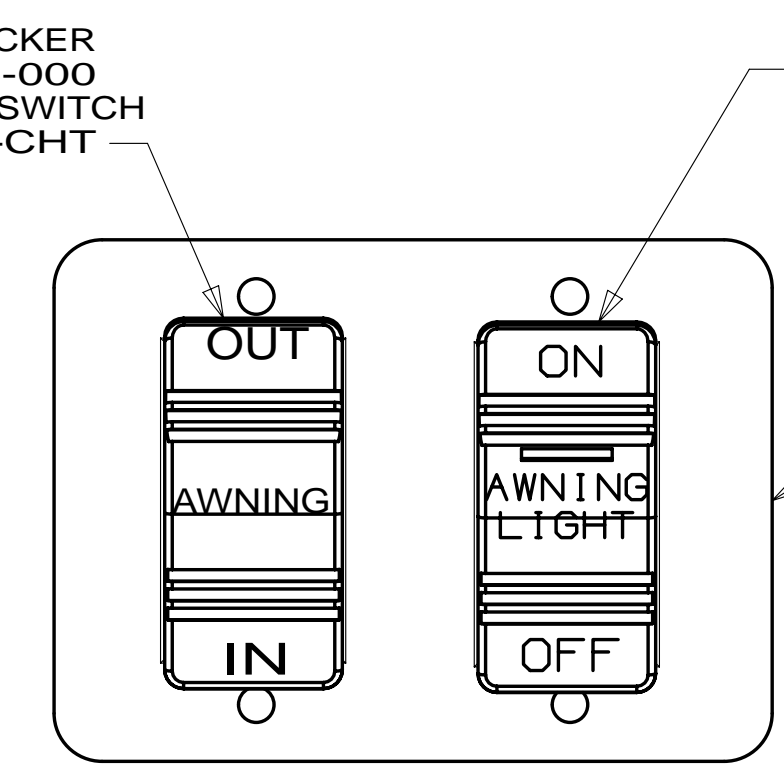
SWITCH-ROCKER
135740-01-CHT (2)
SWITCH-BASE
135741-02-CHT
SWITCH-BEZEL
135742-02-CHT
SCREW
G11-08-08U (4)

DETAIL CB



SWITCH-ROCKER
135740-01-CHT
SWITCH-BASE
135741-01-CHT
SWITCH-BEZEL
135742-01-CHT
SCREW
G11-08-08U (2)

DETAIL CC

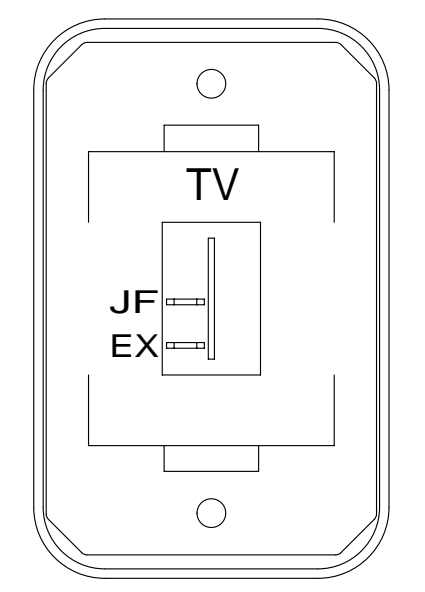


SWITCH-ROCKER
108357-06-000
ACTUATOR-SWITCH
108356-12-CHT

SWITCH-ROCKER
108357-14-000
ACTUATOR-SWITCH
108356-28-CHT

PLATE-SWITCH
98351-22-CHT
SCREW
G11-06-10U (4)

DETAIL CD 52N 3

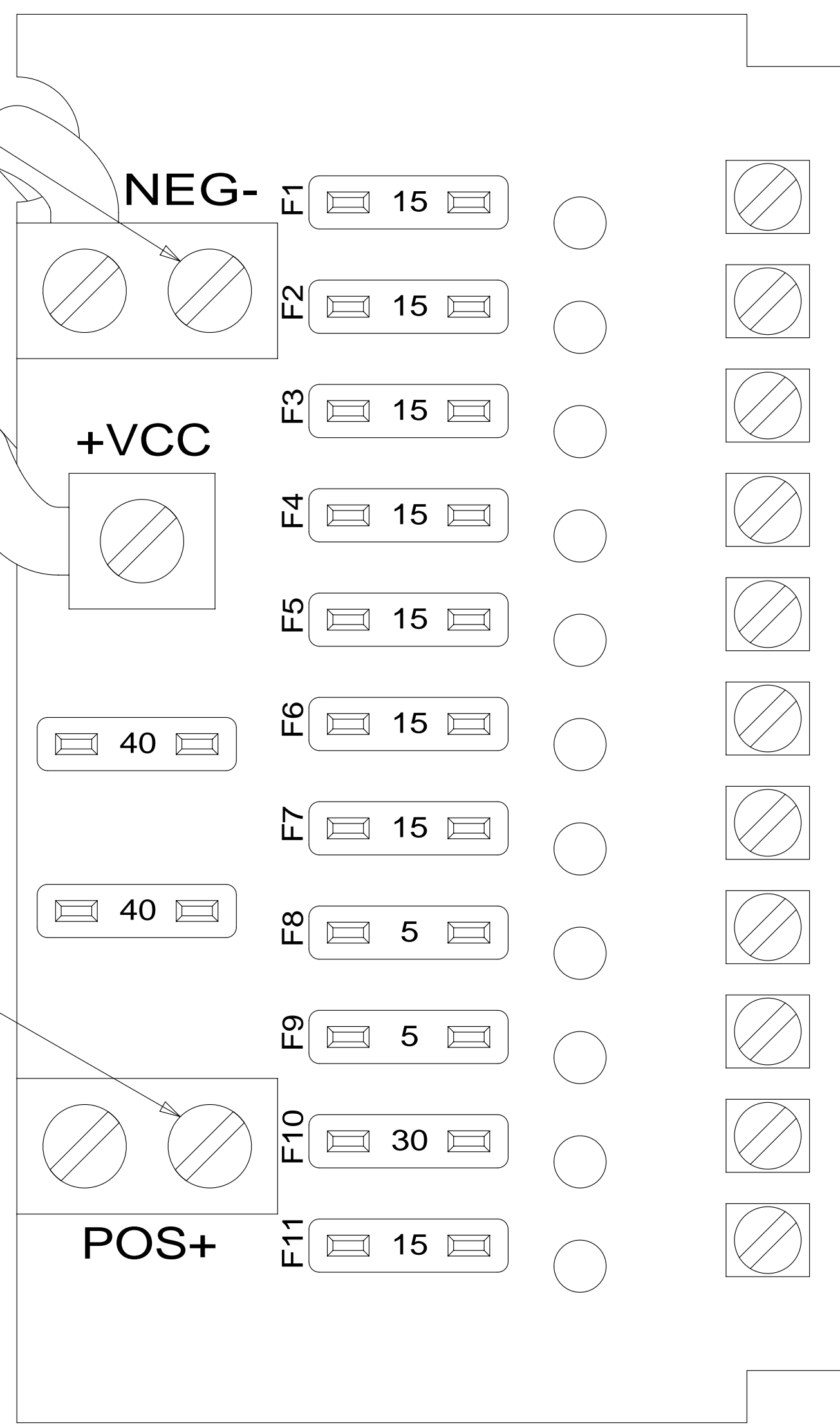


SWITCH-ROCKER
135740-01-CHT
SWITCH-BASE
135741-01-CHT
SWITCH-BEZEL
135742-45-CHT
SCREW
G11-08-08U (2)

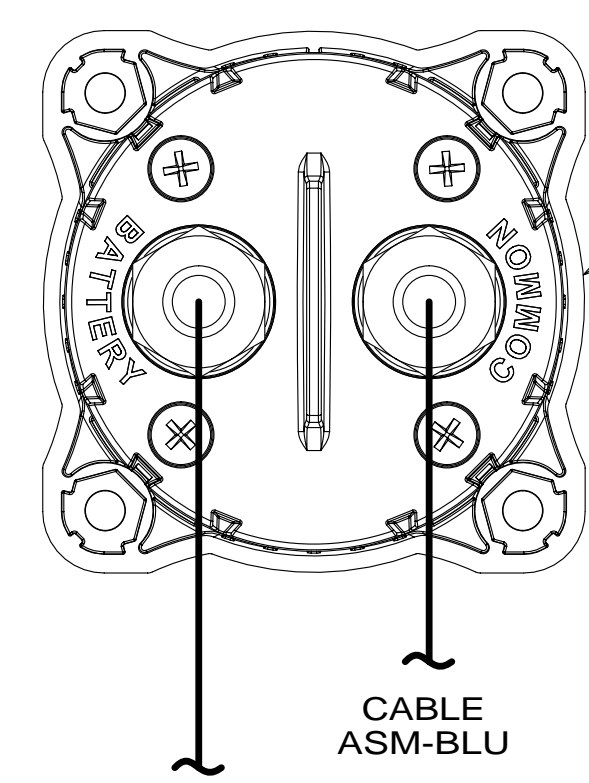
DETAIL CH 644

8 GRN (GROUND)

J BLK (BATTERY COMPT)



- JC 14 YEL (LAMPS)
- JD 14 YEL (LAMPS)
- JE 14 YEL (LAMPS)
- NM 12 YEL (23T) (HEATED TANKS)
- JA 12 YEL (MONITOR PANEL & PUMP) (ISOLATED CIRCUIT)
- JB 14 YEL (FURNACE)
- FFD 12 YEL (AWNING)
- WB 16 YEL (LP LEAK DETECTOR)
- ET 16 YEL (REFRIG)
- LLK 10 YEL (SLIDEOUT)
- JF 14 YEL (TV/RADIO) 644



BATTERY DISCONNECT (REF)

DETAIL CG

- 077 CONVENIENCE & APPEAR PK-CHAMPAGNE
- 52N AWNING - PATIO, ELECTRIC
- 088 CONVENIENCE & APPEAR PK-TAUP
- 083 CONVENIENCE & APPEARANCE PKG
- 644 GREAT ALASKAN RENTAL PACKAGE
- 52F AWNING-PATIO
- 23R DRAINAGE SYSTEM/HEAT-PREWIRE
- 23T DRAINAGE SYSTEM-HEATED
- 265 CODES/STANDARDS-CSA/CMVSS
- 1B1 CODES/STANDARDS USA

NOTES:
 3 USED WITH 331KP.
 2 USED WITH 331K.
 1 FOR REFERENCE ONLY. SEE LOAD CENTER/ATS ASM FOR ADDITIONAL INFORMATION.

FOR ELECTRICAL TORQUE SPECIFICATIONS SEE DWG NO. 128783-01-000

FOR ELECTRICAL CALLOUTS SEE DWG NO. 121339-01-000

1B1 265

FIRST USED

14 331K/P

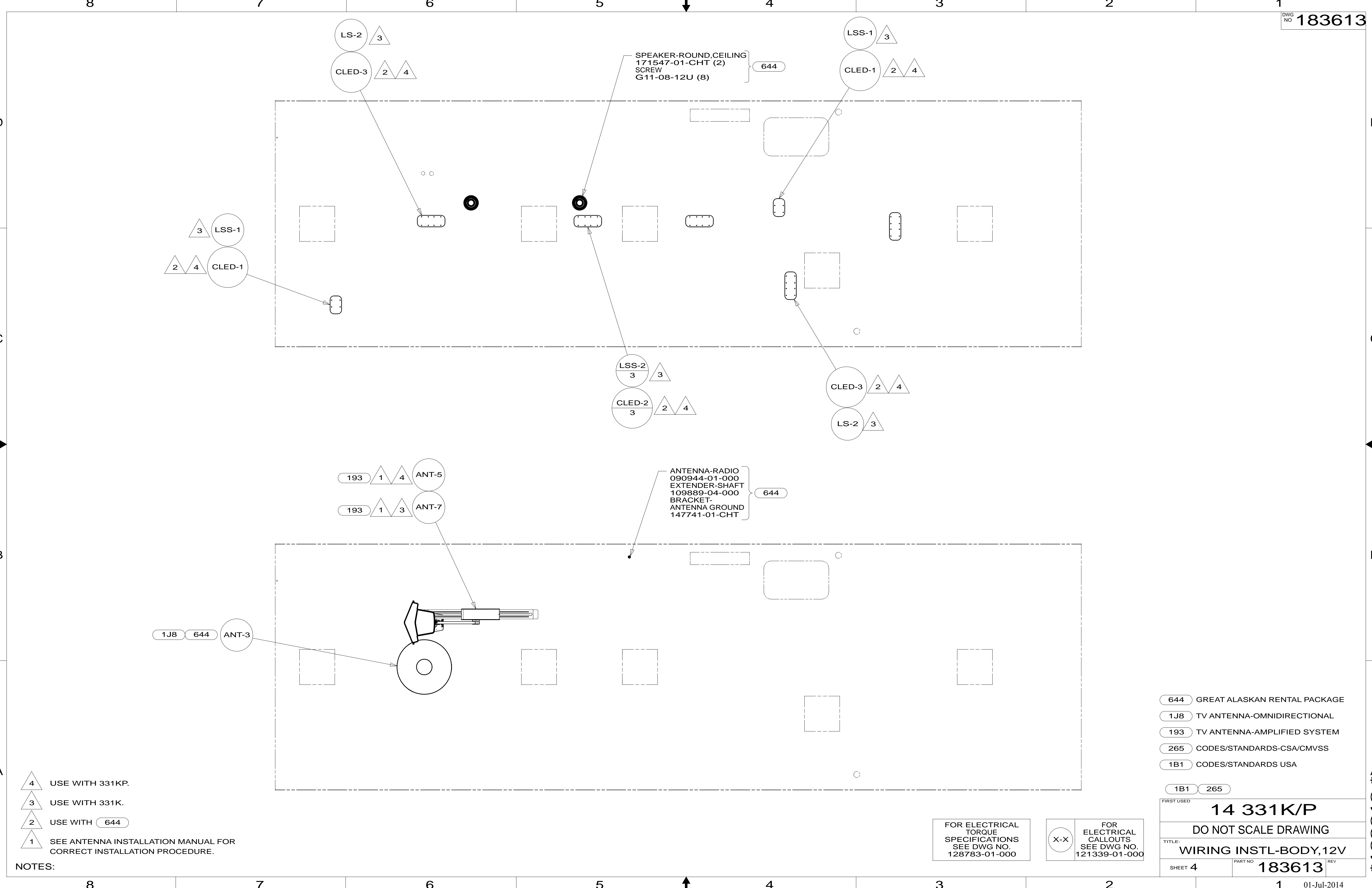
DO NOT SCALE DRAWING

TITLE: **WIRING INSTL-BODY,12V**

SHEET 3 PART NO **183613** REV

01-Jul-2014

* 183613 *



- NOTES:
- 4 USE WITH 331KP.
 - 3 USE WITH 331K.
 - 2 USE WITH 644
 - 1 SEE ANTENNA INSTALLATION MANUAL FOR CORRECT INSTALLATION PROCEDURE.

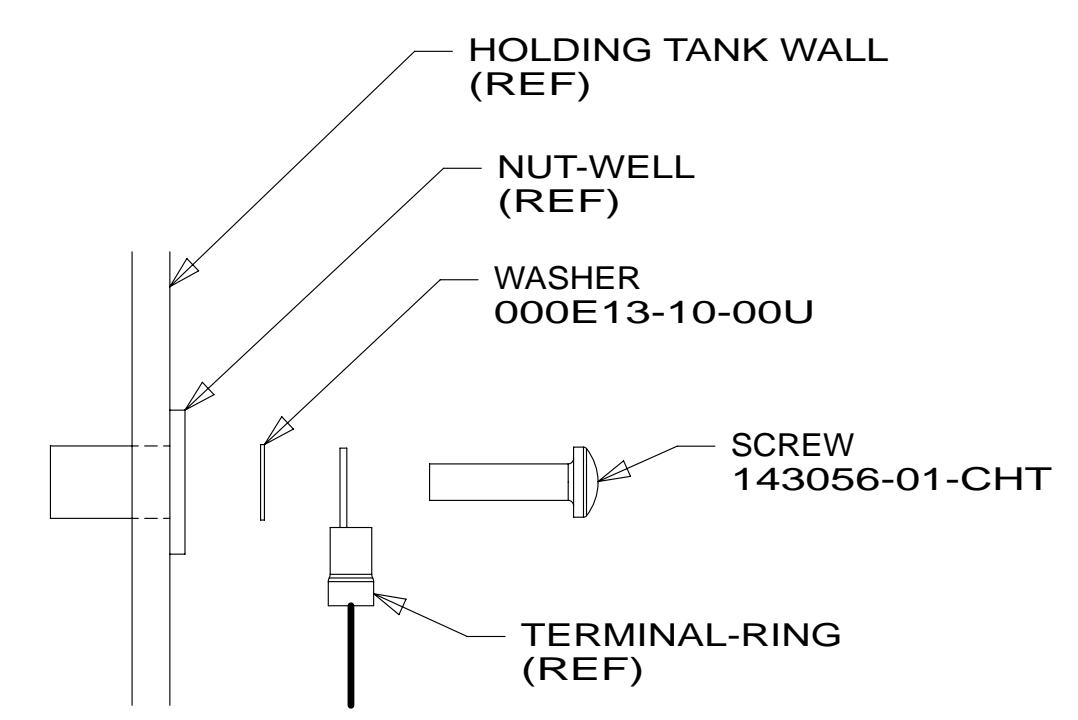
- 644 GREAT ALASKAN RENTAL PACKAGE
- 1J8 TV ANTENNA-OMNIDIRECTIONAL
- 193 TV ANTENNA-AMPLIFIED SYSTEM
- 265 CODES/STANDARDS-CSA/CMVSS
- 1B1 CODES/STANDARDS USA

FIRST USED	14 331K/P	
TITLE:	DO NOT SCALE DRAWING	
SHEET 4	PART NO	183613
	REV	

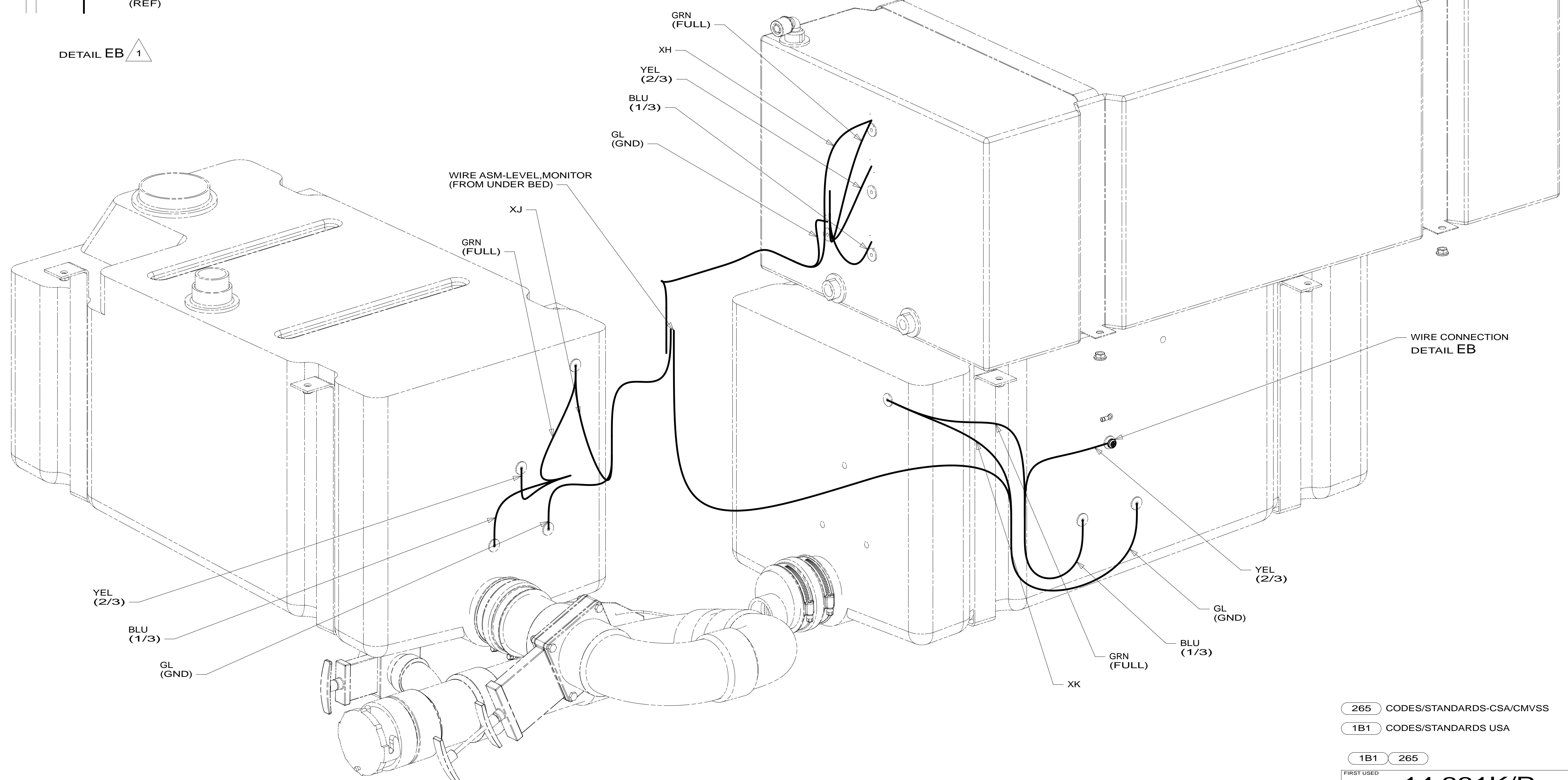
FOR ELECTRICAL TORQUE SPECIFICATIONS SEE DWG NO. 128783-01-000

FOR ELECTRICAL CALLOUTS SEE DWG NO. 121339-01-000

* 183613 * A



DETAIL EB 1



WIRE CONNECTION
 DETAIL EB

DETAIL EA

1 TYPICAL WIRE ATTACHMENT AT ALL LEVEL PROBES (4 EACH)
 FOR WATER, MAIN, AND AUX HOLDING TANKS.

NOTES:

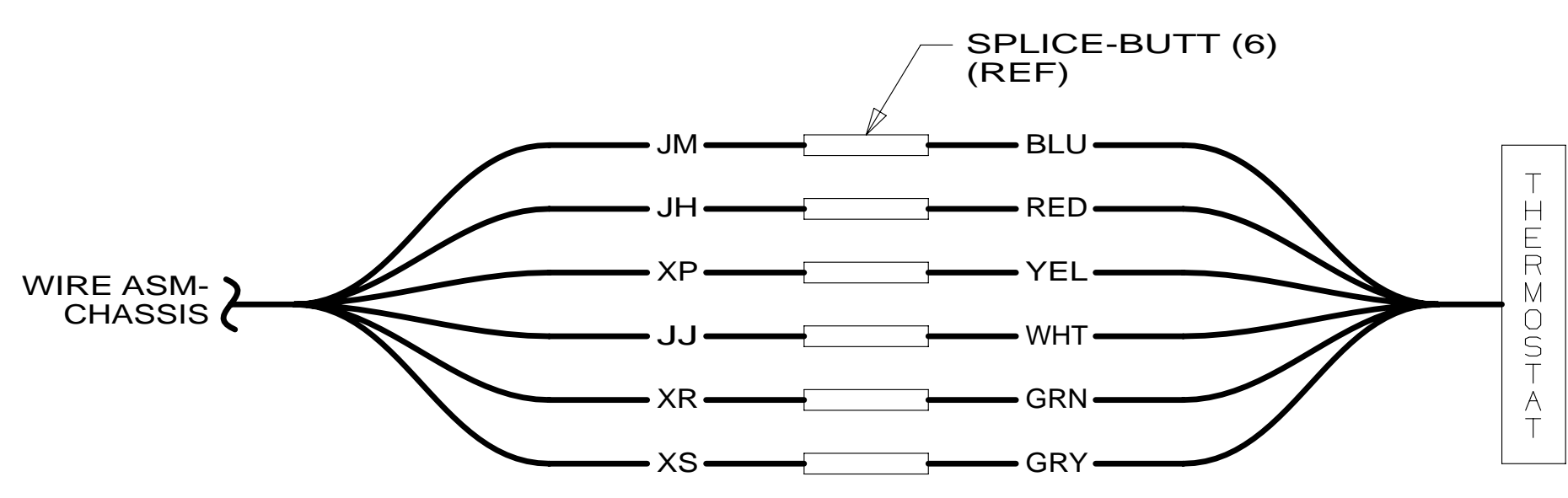
- 265 CODES/STANDARDS-CSA/CMVSS
- 1B1 CODES/STANDARDS USA
- 1B1 265

FOR ELECTRICAL TORQUE SPECIFICATIONS SEE DWG NO. 128783-01-000

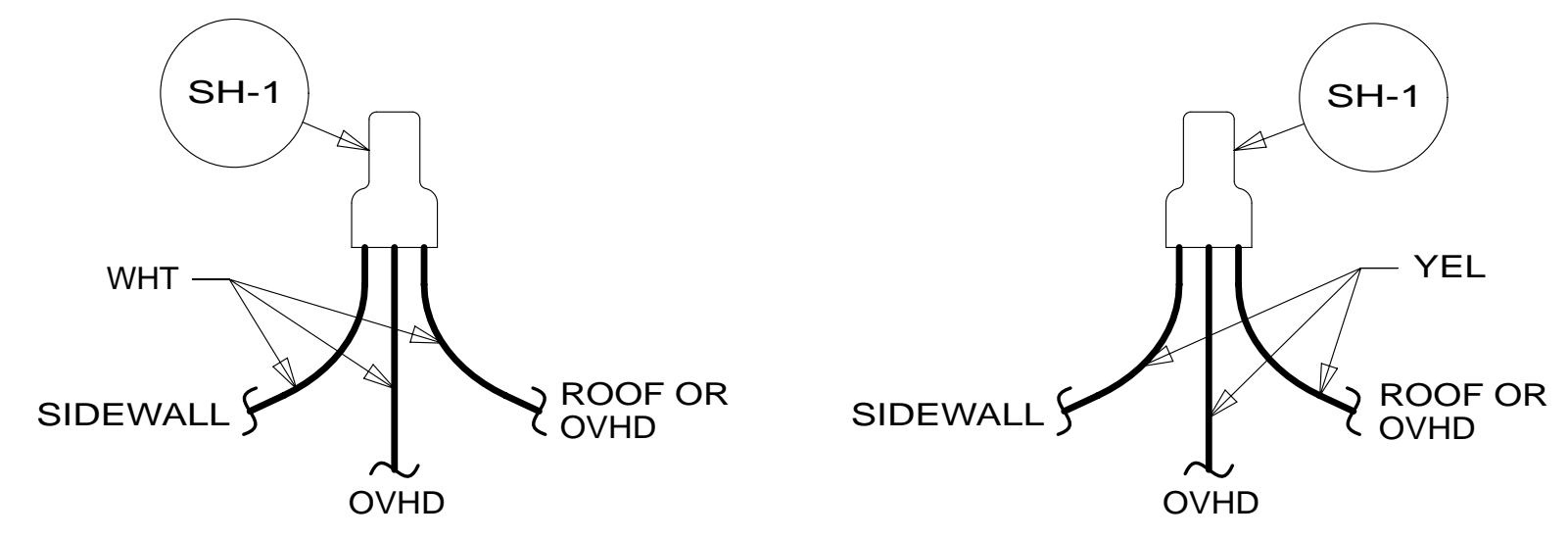
X-X FOR ELECTRICAL CALLOUTS SEE DWG NO. 121339-01-000

FIRST USED		14 331K/P	
DO NOT SCALE DRAWING			
TITLE: WIRING INSTL-BODY, 12V			
SHEET 5	PART NO	183613	REV
		1	01-Jul-2014

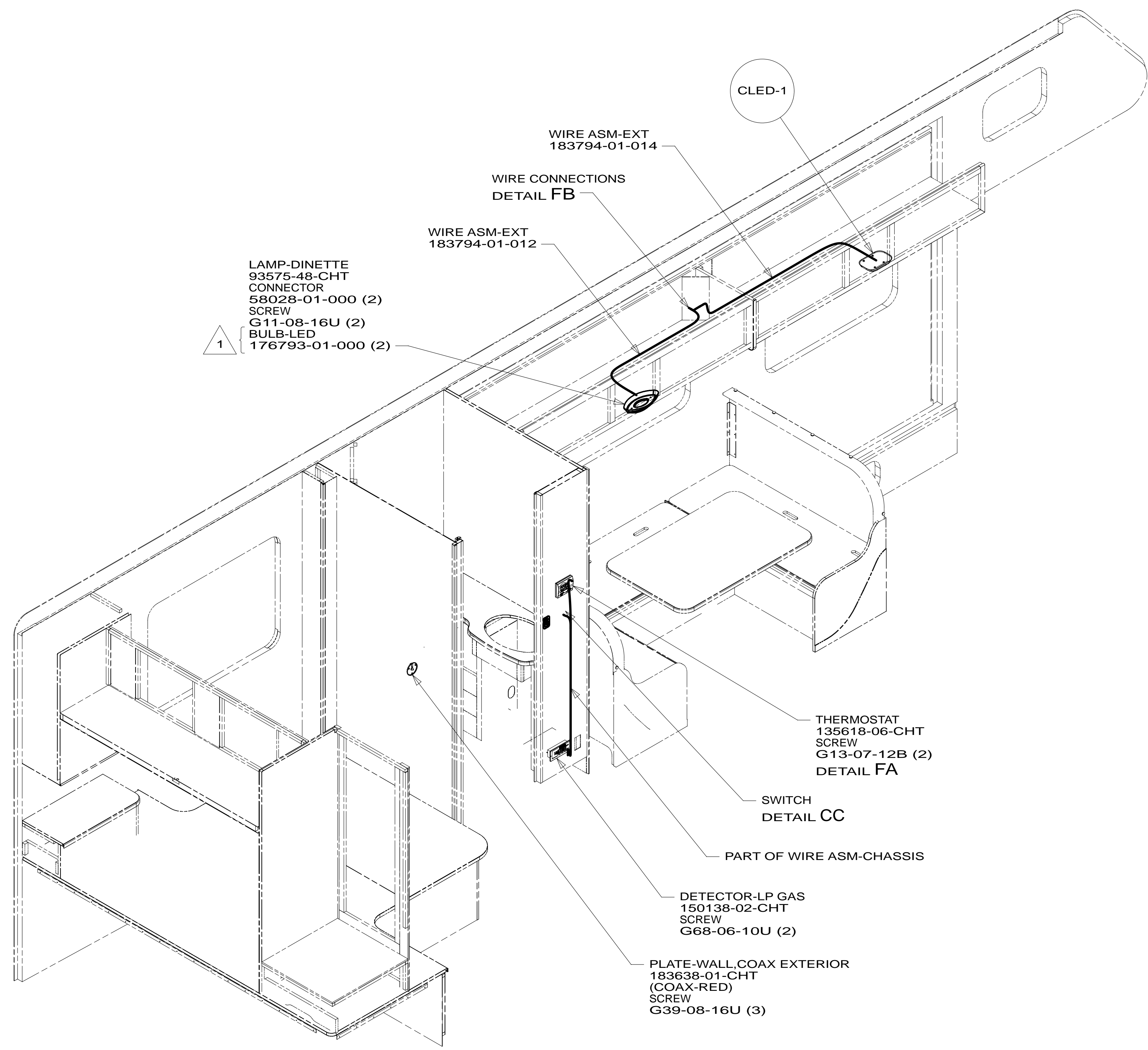
* 183613 * A



DETAIL FA



DETAIL FB



2. AT MINIMUM ALL WIRES TO BE SUPPORTED AND SECURED PER CODE REQUIREMENTS. USE CLAMP 10495 OR 10497 OR WIRE TIE 8343 OR 108046 AND SCREW G67-XX-XXX OR G56-XX-XXX AS APPROPRIATE FOR INSTALLATION.

1 REMOVE BULB SUPPLIED WITH LAMP, SEND TO STOCK AS PART NUMBER 117805-02-000 REPLACE WITH LED BULB.

NOTES:

265 CODES/STANDARDS-CSA/CMVSS

1B1 CODES/STANDARDS USA

1B1 265

FIRST USED 14 331K/P

DO NOT SCALE DRAWING

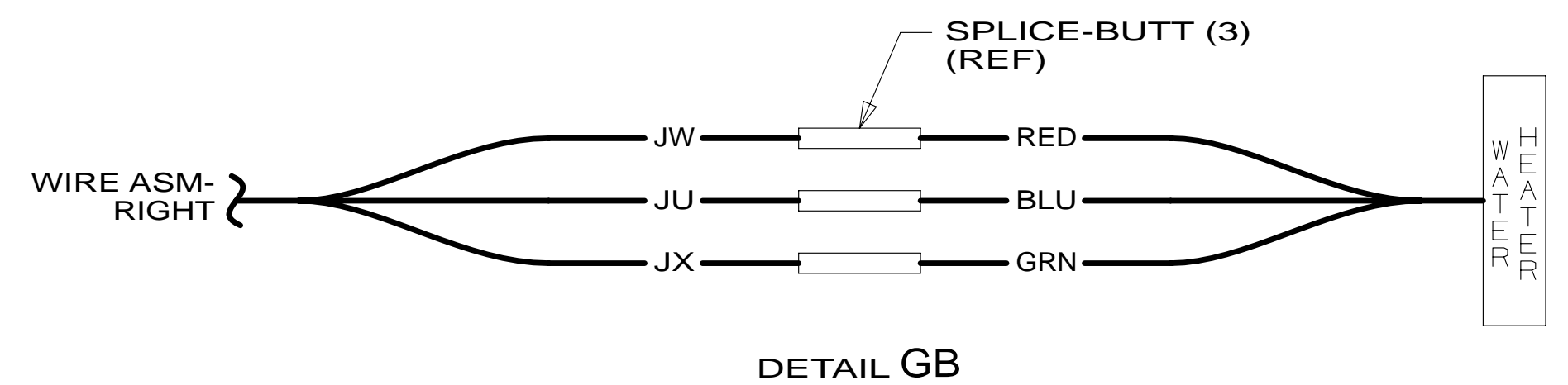
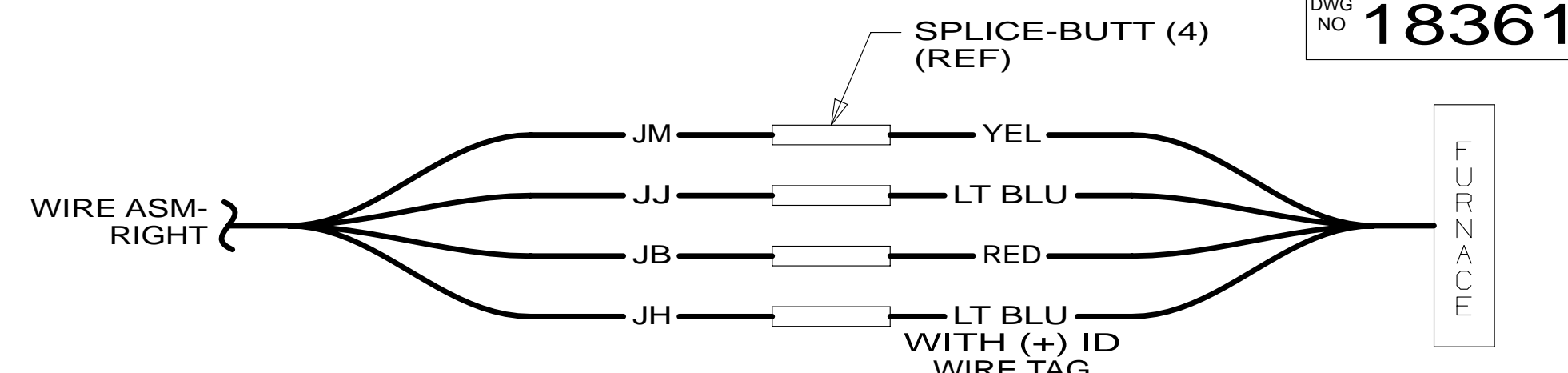
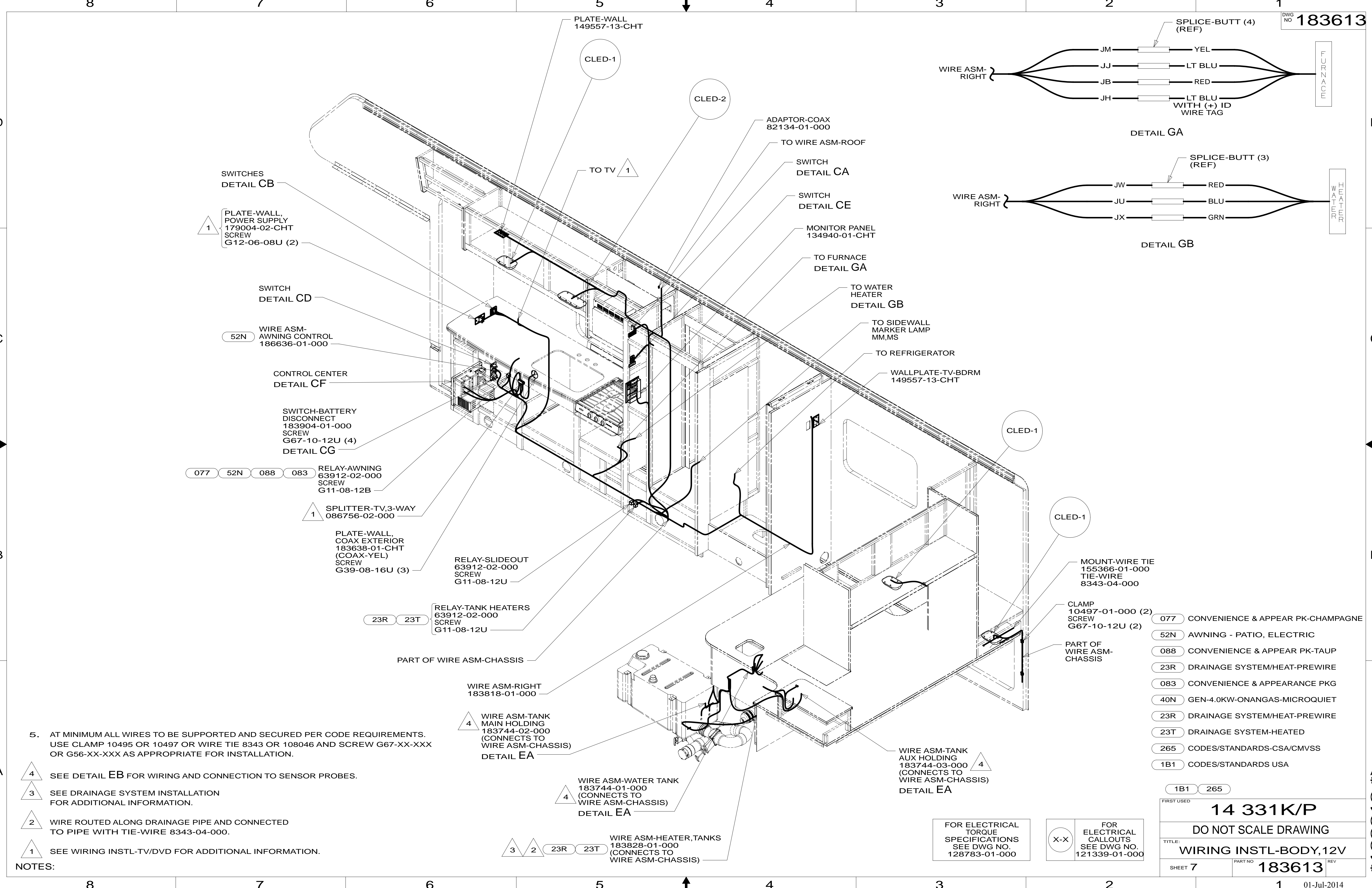
TITLE: WIRING INSTL-BODY, 12V

SHEET 6 PART NO 183613 REV

FOR ELECTRICAL TORQUE SPECIFICATIONS SEE DWG NO. 128783-01-000

FOR ELECTRICAL CALLOUTS SEE DWG NO. 121339-01-000

* 183613 * A



- NOTES:
- 5. AT MINIMUM ALL WIRES TO BE SUPPORTED AND SECURED PER CODE REQUIREMENTS. USE CLAMP 10495 OR 10497 OR WIRE TIE 8343 OR 108046 AND SCREW G67-XX-XXX OR G56-XX-XXX AS APPROPRIATE FOR INSTALLATION.
 - 4 SEE DETAIL EB FOR WIRING AND CONNECTION TO SENSOR PROBES.
 - 3 SEE DRAINAGE SYSTEM INSTALLATION FOR ADDITIONAL INFORMATION.
 - 2 WIRE ROUTED ALONG DRAINAGE PIPE AND CONNECTED TO PIPE WITH TIE-WIRE 8343-04-000.
 - 1 SEE WIRING INSTL-TV/DVD FOR ADDITIONAL INFORMATION.

- 077 CONVENIENCE & APPEAR PK-CHAMPAGNE
- 52N AWNING - PATIO, ELECTRIC
- 088 CONVENIENCE & APPEAR PK-TAUP
- 23R DRAINAGE SYSTEM/HEAT-PREWIRE
- 083 CONVENIENCE & APPEARANCE PKG
- 40N GEN-4.0KW-ONANGAS-MICROQUIET
- 23R DRAINAGE SYSTEM/HEAT-PREWIRE
- 23T DRAINAGE SYSTEM-HEATED
- 265 CODES/STANDARDS-CSA/CMVSS
- 1B1 CODES/STANDARDS USA

FOR ELECTRICAL TORQUE SPECIFICATIONS SEE DWG NO. 128783-01-000

FOR ELECTRICAL CALLOUTS SEE DWG NO. 121339-01-000

FIRST USED		14 331K/P	
DO NOT SCALE DRAWING			
TITLE: WIRING INSTL-BODY,12V			
SHEET 7	PART NO	183613	REV
			01-Jul-2014

* 183613 * A