



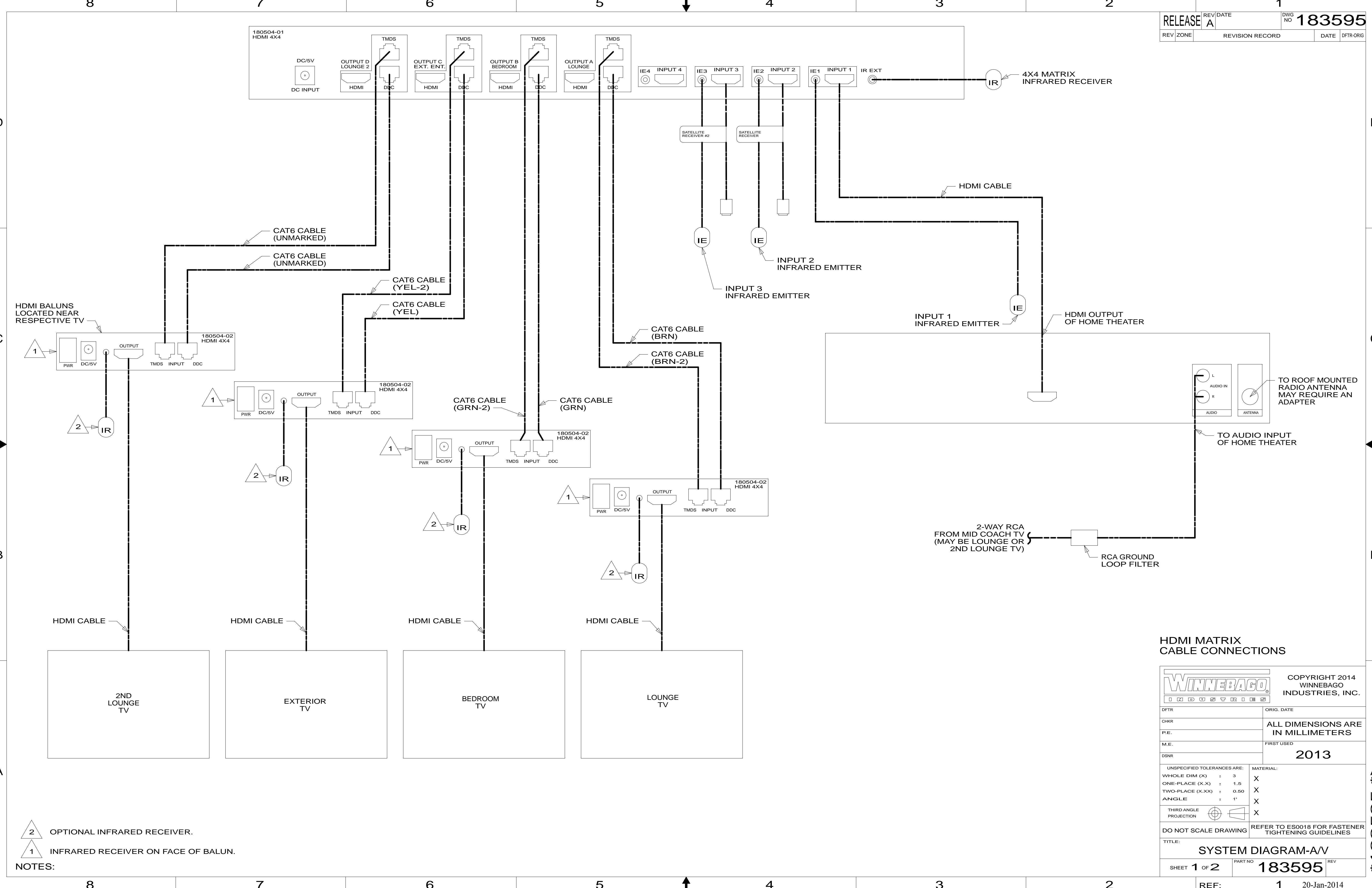
**DANGER**

**Danger of electrical shock, burns or death.** Always remove all power sources before attempting any repair, service or diagnostic work. Power can be present from shore power, generator, inverter or battery. All power sources must be disabled and secured before performing any service.



**CAUTION**

If you lack the skills, tools or equipment to perform diagnostic or repair work leave such work to an authorized Winnebago Industries dealer or other qualified shop.



HDMI BALUNS LOCATED NEAR RESPECTIVE TV

NOTES:  
 2 OPTIONAL INFRARED RECEIVER.  
 1 INFRARED RECEIVER ON FACE OF BALUN.

**HDMI MATRIX CABLE CONNECTIONS**

WINNEBAGO  
 COPYRIGHT 2014 WINNEBAGO INDUSTRIES, INC.

DFTR	ORIG. DATE
CHKR	ALL DIMENSIONS ARE IN MILLIMETERS
P.E.	FIRST USED
M.E.	2013
DSNR	

UNSPECIFIED TOLERANCES ARE:  
 WHOLE DIM (X) : 3 X  
 ONE-PLACE (X.X) : 1.5 X  
 TWO-PLACE (X.XX) : 0.50 X  
 ANGLE : 1' X  
 THIRD ANGLE PROJECTION : X

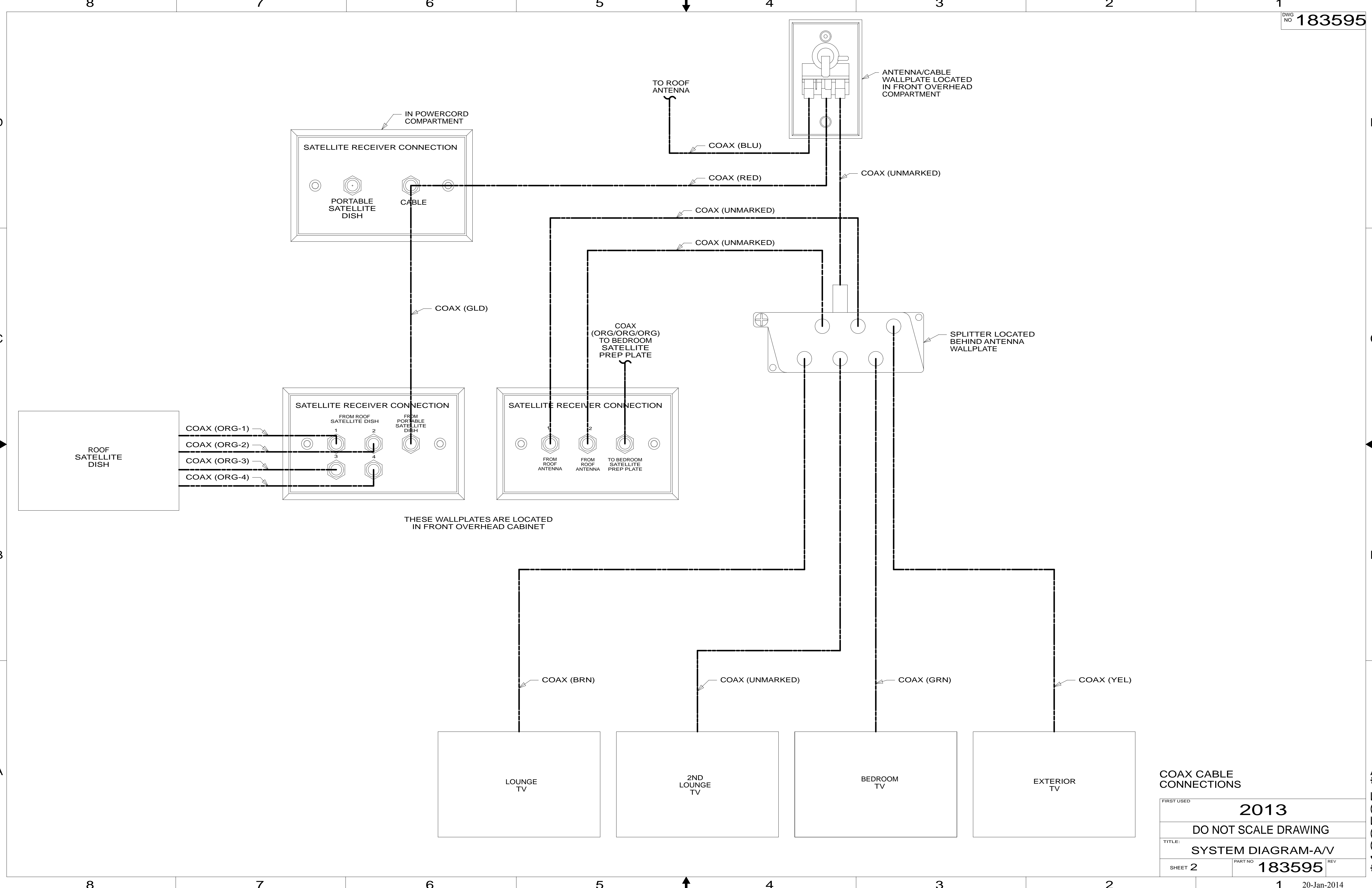
DO NOT SCALE DRAWING REFER TO ES0018 FOR FASTENER TIGHTENING GUIDELINES

TITLE: **SYSTEM DIAGRAM-A/V**

SHEET 1 OF 2 PART NO 183595 REV 1

REF: 1 20-Jan-2014

\* 183595 \* A



THESE WALLPLATES ARE LOCATED IN FRONT OVERHEAD CABINET

COAX CABLE CONNECTIONS

FIRST USED	2013		
DO NOT SCALE DRAWING			
TITLE:	SYSTEM DIAGRAM-A/V		
SHEET 2	PART NO	183595	REV
		1	20-Jan-2014

\* 183595 \* A