



**DANGER**

**Danger of electrical shock, burns or death.** Always remove all power sources before attempting any repair, service or diagnostic work. Power can be present from shore power, generator, inverter or battery. All power sources must be disabled and secured before performing any service.

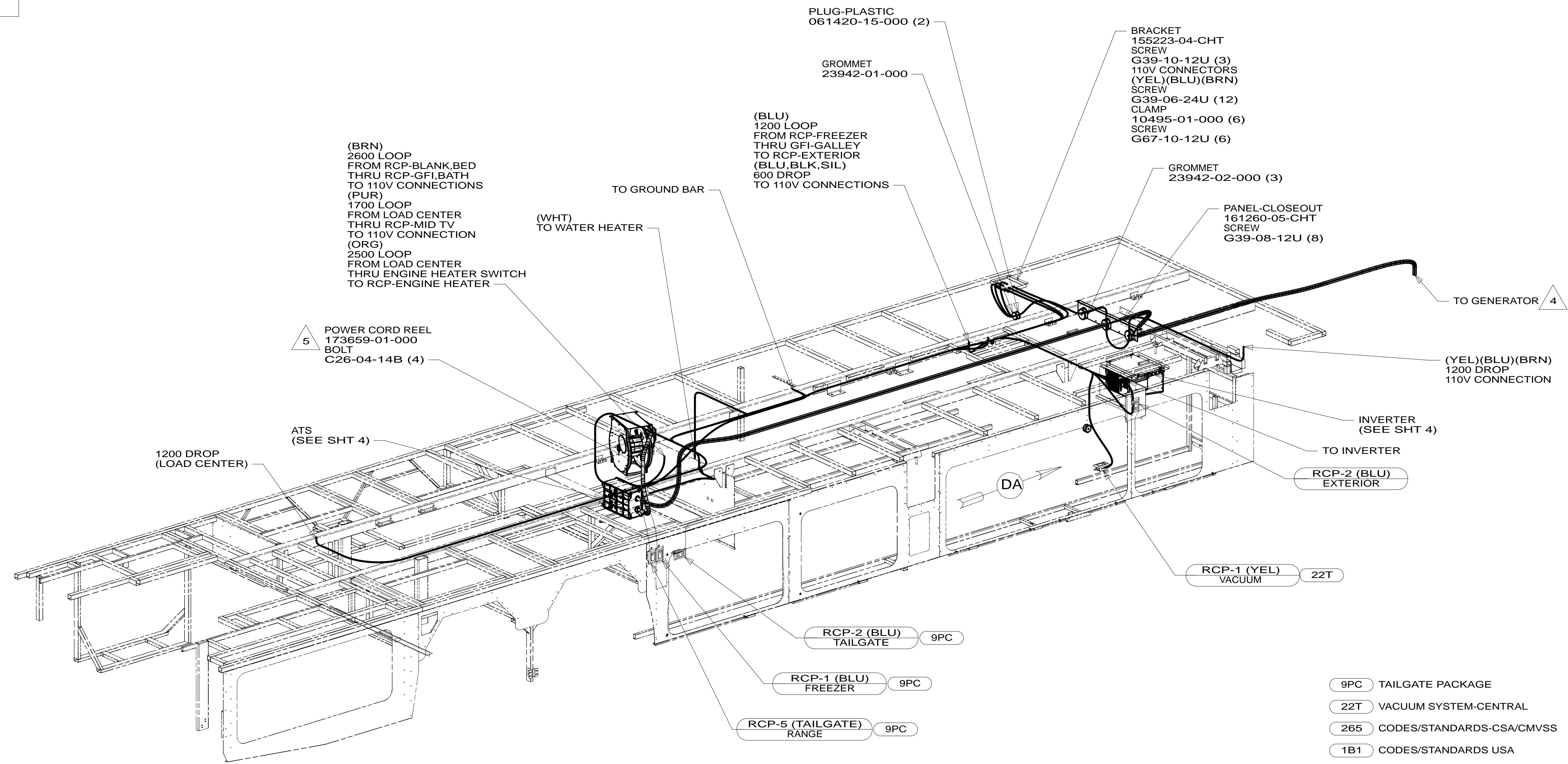


**CAUTION**

If you lack the skills, tools or equipment to perform diagnostic or repair work leave such work to an authorized Winnebago Industries dealer or other qualified shop.

DRAWING NO.	FEATURE
183551-01	-----
183551-14	1B1
183551-18	265

RELEASE	REV/DATE	DWG NO	183551
REV ZONE	REVISION RECORD	DATE	DFT-ORIG



- 5 INSERT BOLT FROM BOTTOM OF COMPARTMENT.
- 4 SEE GENERATOR INSTL FOR ADDITIONAL INFORMATION.

3. WIRES THAT REST ON WIRE TRAYS ARE TO BE TIED DOWN WITH WIRE TIE 8343-04-000.
2. CLAMP TO FLOOR SUPPORT TUBES AS NECESSARY WITH CLAMP 10497-01-000.
1. ALL WIRES TO BE SECURED WITH CLAMP 10495 OR 10497 OR WIRE TIE 8343 OR 108046 EVERY 600MM, USE SCREW G67-XX-XXX OR G56-XX-XXX AS APPROPRIATE FOR INSTALLATION.

- 9PC TAILGATE PACKAGE
- 22T VACUUM SYSTEM-CENTRAL
- 265 CODES/STANDARDS-CSA/CMVSS
- 1B1 CODES/STANDARDS USA

1B1 265

**WINNEBAGO** COPYRIGHT 2014 WINNEBAGO INDUSTRIES, INC.

DFT-ORIG	ORIG. DATE
CHKR	ALL DIMENSIONS ARE IN MILLIMETERS
P.E.	
M.E.	FIRST USED
DSNR	14 R42GD

UNSPECIFIED TOLERANCES ARE:

WHOLE DIM (X)	: 3
ONE-PLACE (X.X)	: 1.5
TWO-PLACE (X.XX)	: 0.50
ANGLE	: 1'

THIRD ANGLE PROJECTION

DO NOT SCALE DRAWING REFER TO ES0018 FOR FASTENER TIGHTENING GUIDELINES

TITLE: **WIRING INSTL-BODY, 110V**

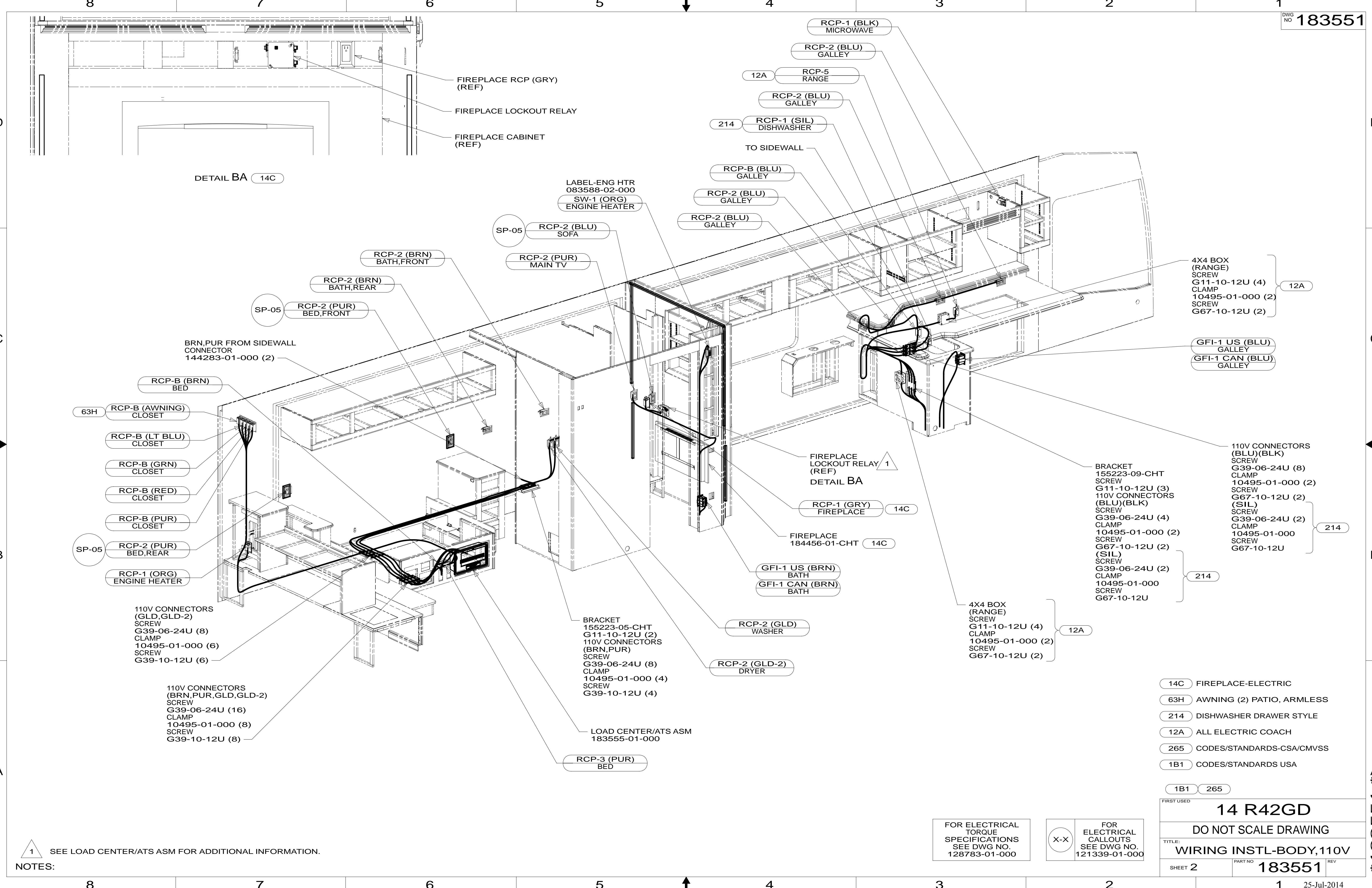
SHEET 1 OF 5 PART NO. 183551 REV

REF: 1 25-Jul-2014

FOR ELECTRICAL TORQUE SPECIFICATIONS SEE DWG NO. 128783-01-000

FOR ELECTRICAL CALLOUTS SEE DWG NO. 121339-01-000

\* 183551 \* A



DETAIL BA 14C

BRN, PUR FROM SIDEWALL CONNECTOR 144283-01-000 (2)

110V CONNECTORS (GLD, GLD-2) SCREW G39-06-24U (8) CLAMP 10495-01-000 (6) SCREW G39-10-12U (6)

110V CONNECTORS (BRN, PUR, GLD, GLD-2) SCREW G39-06-24U (16) CLAMP 10495-01-000 (8) SCREW G39-10-12U (8)

LABEL-ENG HTR 083588-02-000 SW-1 (ORG) ENGINE HEATER

BRACKET 155223-05-CHT G11-10-12U (2) 110V CONNECTORS (BRN, PUR) SCREW G39-06-24U (8) CLAMP 10495-01-000 (4) SCREW G39-10-12U (4)

LOAD CENTER/ATS ASM 183555-01-000

FIREPLACE LOCKOUT RELAY 1 (REF) DETAIL BA

BRACKET 155223-09-CHT SCREW G11-10-12U (3) 110V CONNECTORS (BLU)(BLK) SCREW G39-06-24U (4) CLAMP 10495-01-000 (2) SCREW G67-10-12U (2) (SIL) SCREW G39-06-24U (2) CLAMP 10495-01-000 SCREW G67-10-12U

FOR ELECTRICAL TORQUE SPECIFICATIONS SEE DWG NO. 128783-01-000

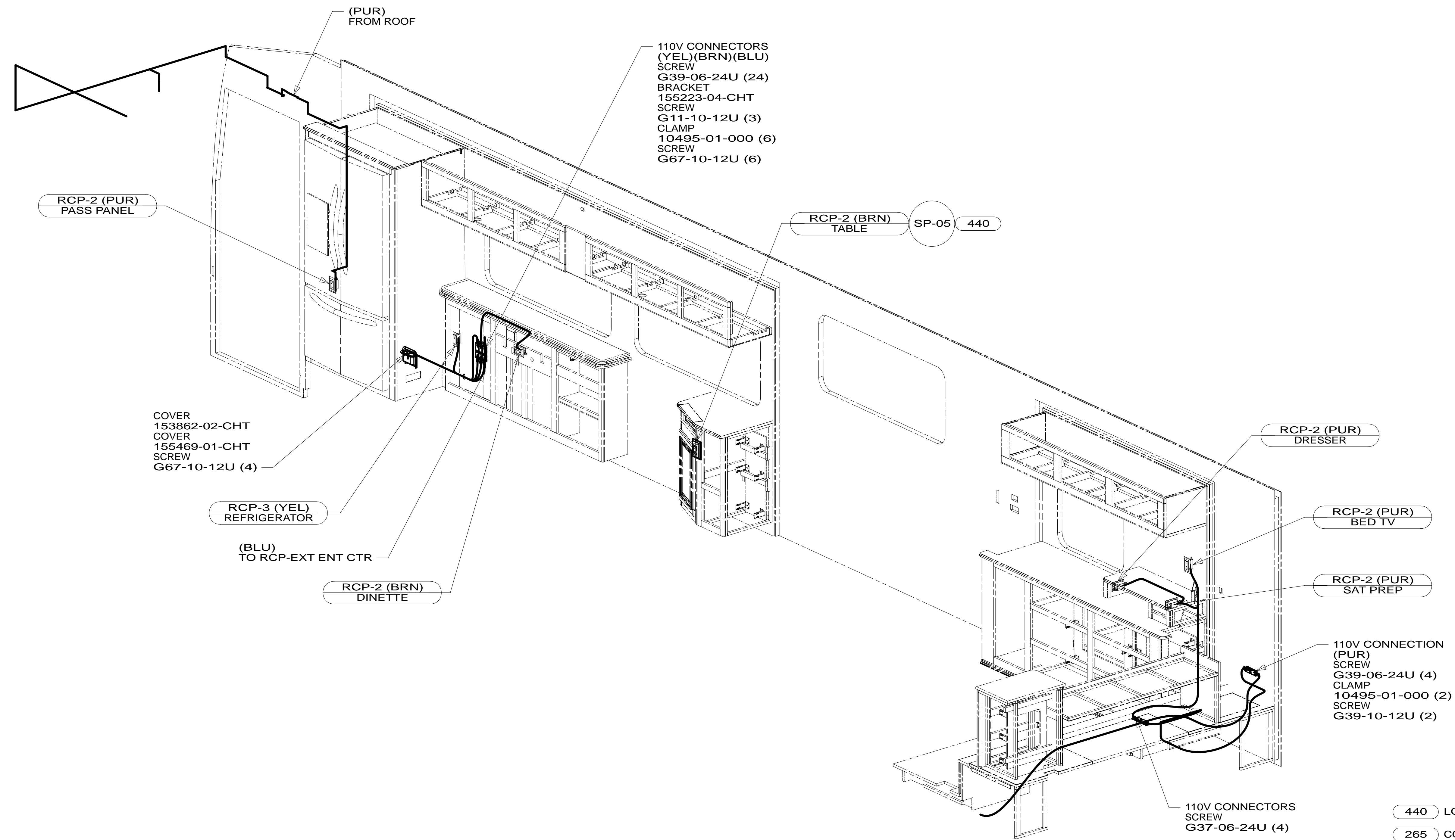
FOR ELECTRICAL CALLOUTS SEE DWG NO. 121339-01-000

- 14C FIREPLACE-ELECTRIC
- 63H AWNING (2) PATIO, ARMLESS
- 214 DISHWASHER DRAWER STYLE
- 12A ALL ELECTRIC COACH
- 265 CODES/STANDARDS-CSA/CMVSS
- 1B1 CODES/STANDARDS USA

FIRST USED	
<b>14 R42GD</b>	
DO NOT SCALE DRAWING	
TITLE: <b>WIRING INSTL-BODY, 110V</b>	
SHEET 2	PART NO <b>183551</b> REV
25-Jul-2014	

NOTES:  
 1 SEE LOAD CENTER/ATS ASM FOR ADDITIONAL INFORMATION.

\* 183551 \*



FOR ELECTRICAL TORQUE SPECIFICATIONS SEE DWG NO. 128783-01-000

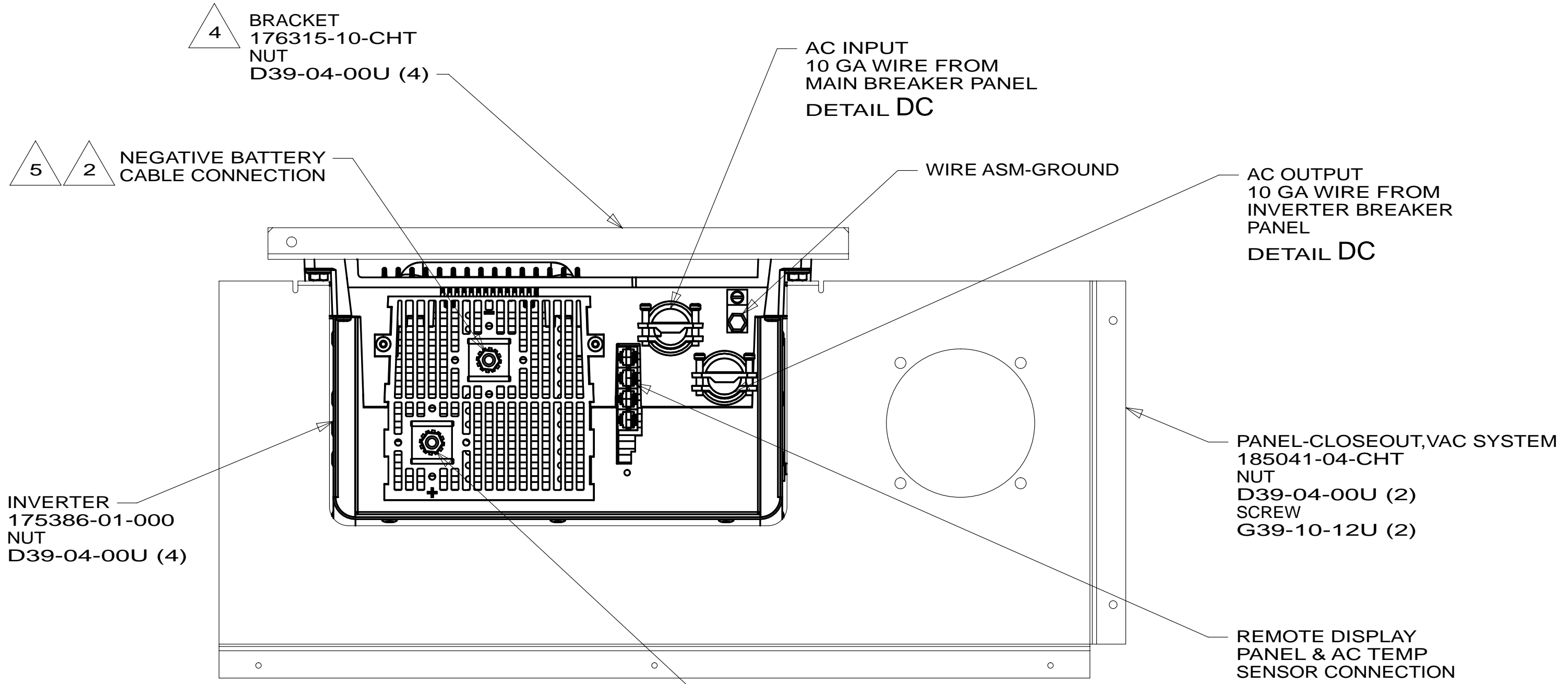
FOR ELECTRICAL CALLOUTS SEE DWG NO. 121339-01-000

- 440 LOUNGE CHAIR WITH CABINET
- 265 CODES/STANDARDS-CSA/CMVSS
- 1B1 CODES/STANDARDS USA

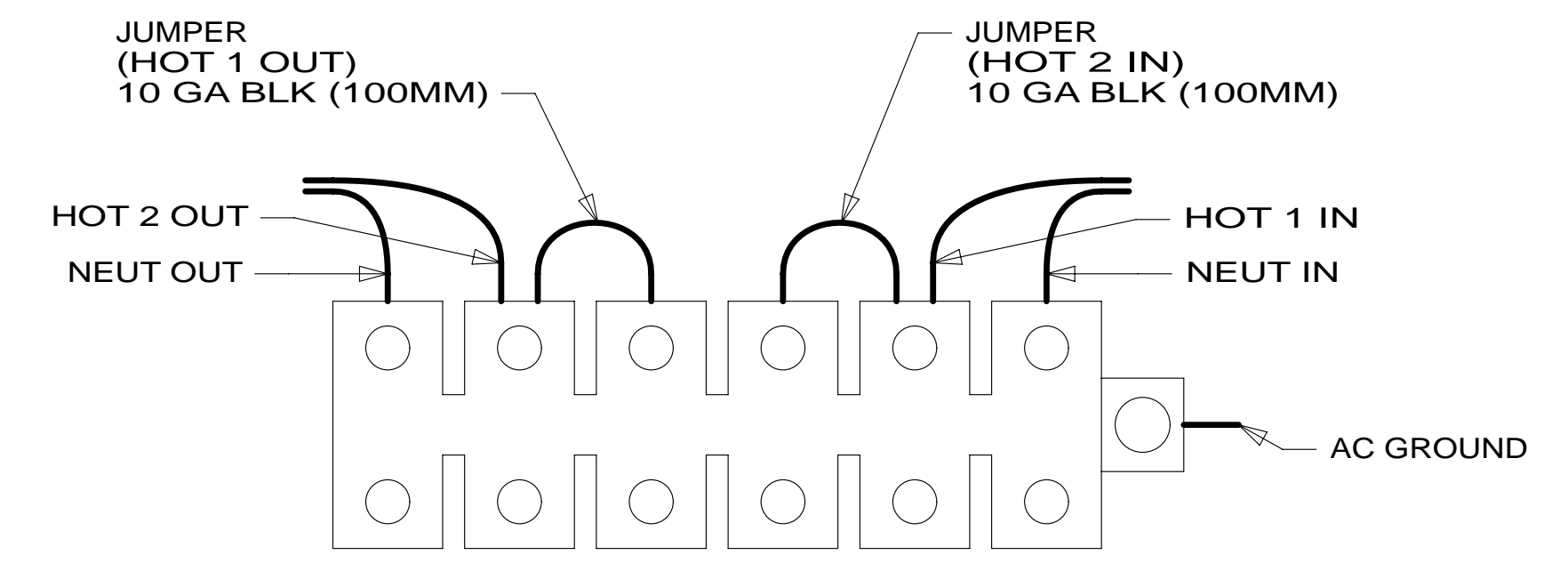
FIRST USED	
<b>14 R42GD</b>	
DO NOT SCALE DRAWING	
TITLE: <b>WIRING INSTL-BODY, 110V</b>	
SHEET 3	PART NO <b>183551</b> REV
1 25-Jul-2014	

\* 183551 \* A

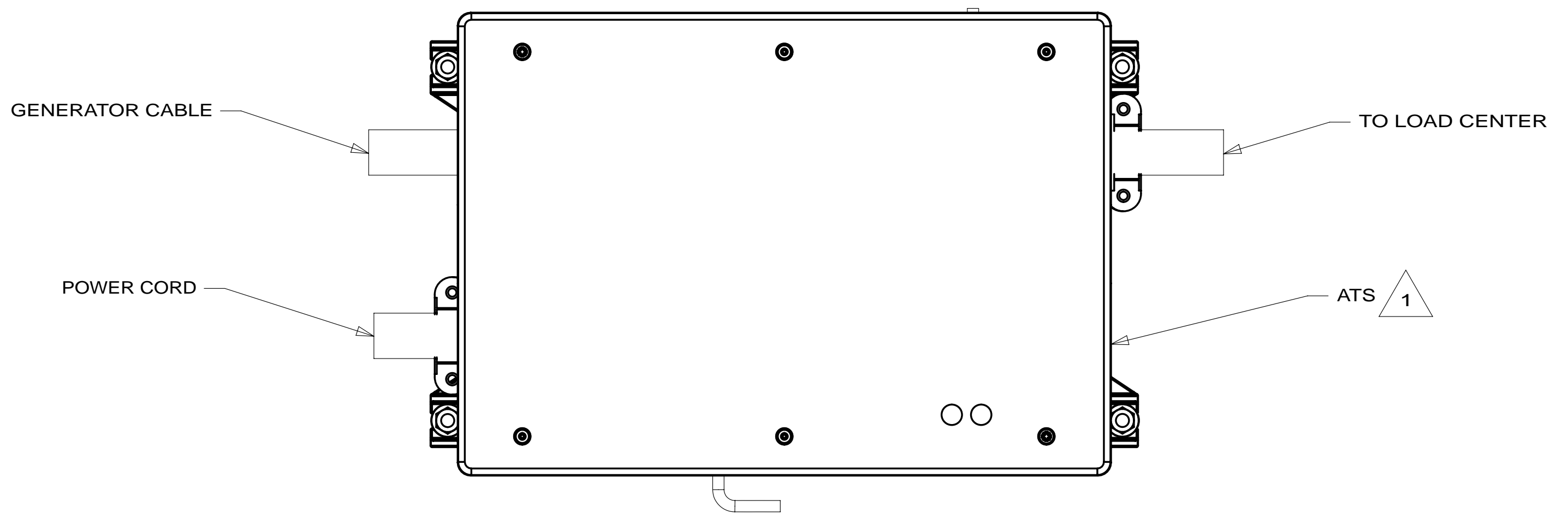




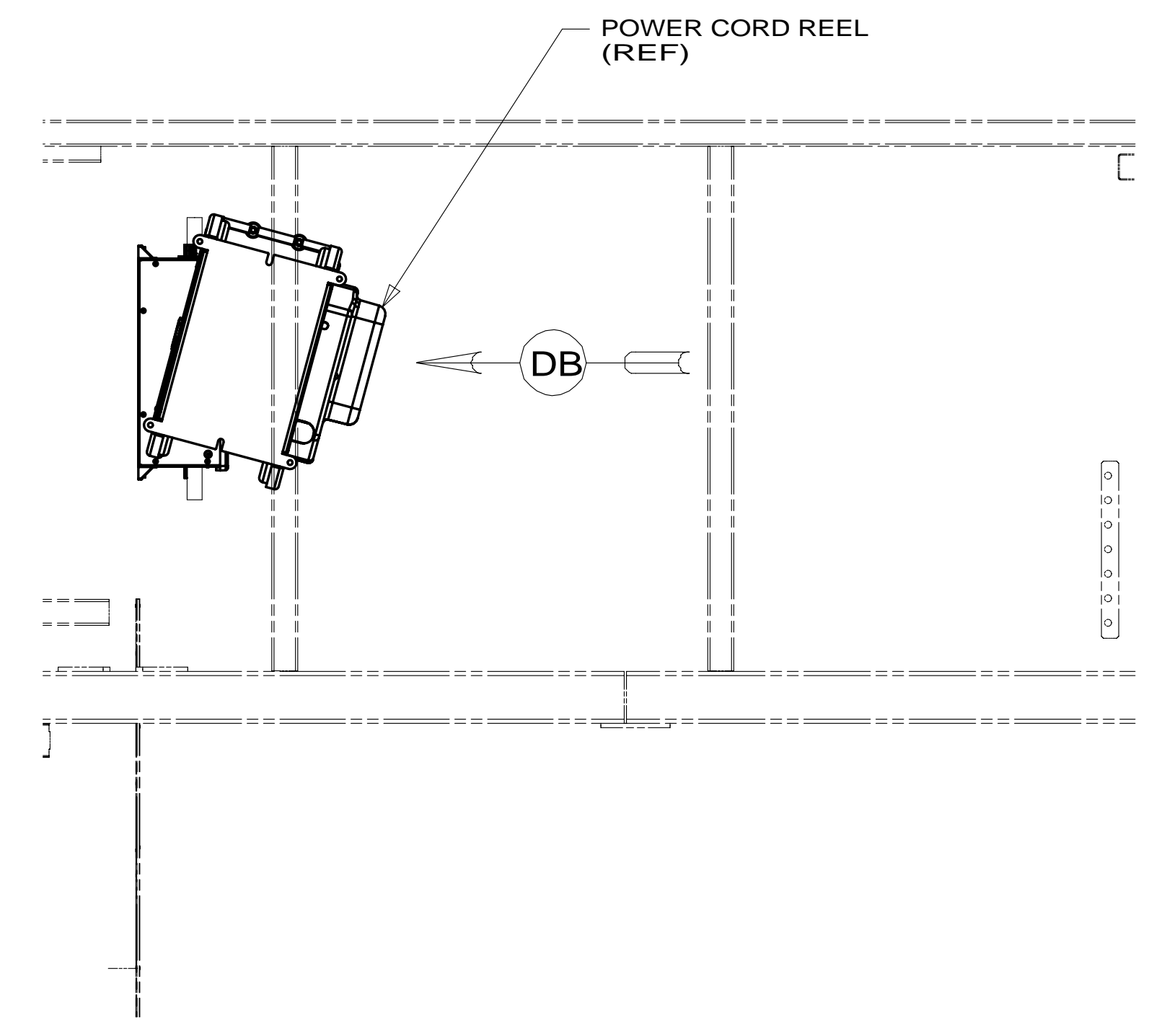
VIEW DA



DETAIL DC



VIEW DB



VIEW DD

- NOTES:
- 5 TORQUE TO 10-12 FT LBS.
  - 4 INVERTER IS LOCATED BY BRACKET, PART OF FRAME ASM-CHASSIS.
  - 3 INSERT BOLT FROM BOTTOM OF COMPARTMENT.
  - 2 SEE BATTERY INSTL FOR ADDITIONAL INFORMATION.
  - 1 SEE LOAD CENTER/ATS ASM FOR ADDITIONAL INFORMATION.

265 CODES/STANDARDS-CSA/CMVSS  
1B1 CODES/STANDARDS USA

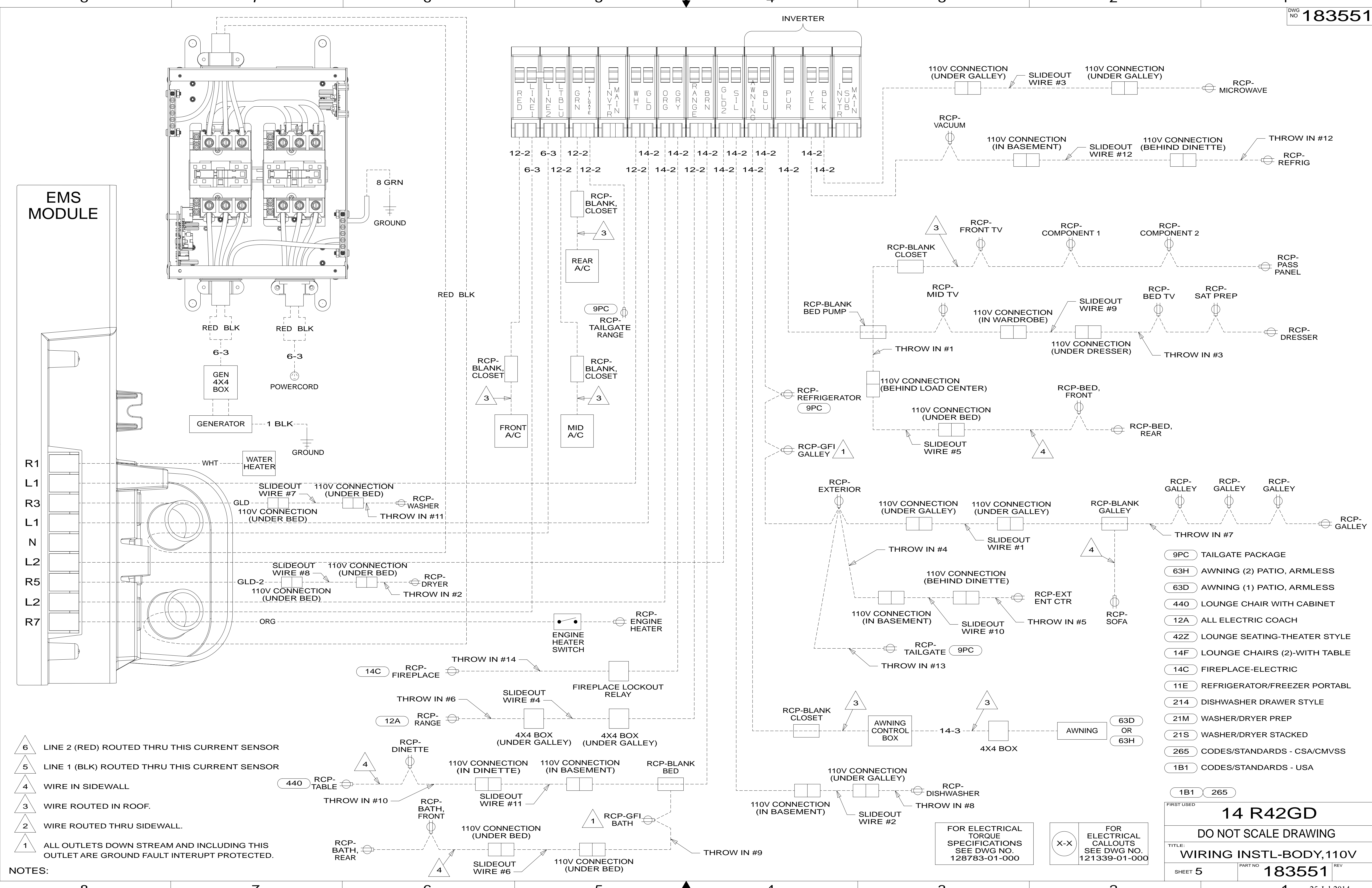
1B1 265

FIRST USED		<b>14 R42GD</b>	
DO NOT SCALE DRAWING			
TITLE: <b>WIRING INSTL-BODY, 110V</b>			
SHEET 4	PART NO	<b>183551</b>	REV
			25-Jul-2014

FOR ELECTRICAL  
TORQUE  
SPECIFICATIONS  
SEE DWG NO.  
128783-01-000

X-X  
FOR  
ELECTRICAL  
CALLOUTS  
SEE DWG NO.  
121339-01-000

\* 183551 \* A



**EMS  
MODULE**

**INVERTER**

- R1
- L1
- R3
- L1
- N
- L2
- R5
- L2
- R7

- NOTES:**
- 6 LINE 2 (RED) ROUTED THRU THIS CURRENT SENSOR
  - 5 LINE 1 (BLK) ROUTED THRU THIS CURRENT SENSOR
  - 4 WIRE IN SIDEWALL
  - 3 WIRE ROUTED IN ROOF.
  - 2 WIRE ROUTED THRU SIDEWALL.
  - 1 ALL OUTLETS DOWN STREAM AND INCLUDING THIS OUTLET ARE GROUND FAULT INTERRUPT PROTECTED.

- 9PC TAILGATE PACKAGE
- 63H AWNING (2) PATIO, ARMLESS
- 63D AWNING (1) PATIO, ARMLESS
- 440 LOUNGE CHAIR WITH CABINET
- 12A ALL ELECTRIC COACH
- 42Z LOUNGE SEATING-THEATER STYLE
- 14F LOUNGE CHAIRS (2)-WITH TABLE
- 14C FIREPLACE-ELECTRIC
- 11E REFRIGERATOR/FREEZER PORTABL
- 214 DISHWASHER DRAWER STYLE
- 21M WASHER/DRYER PREP
- 21S WASHER/DRYER STACKED
- 265 CODES/STANDARDS - CSA/CMVSS
- 1B1 CODES/STANDARDS - USA

FOR ELECTRICAL TORQUE SPECIFICATIONS SEE DWG NO. 128783-01-000

FOR ELECTRICAL CALLOUTS SEE DWG NO. 121339-01-000

FIRST USED	
<b>14 R42GD</b>	
<b>DO NOT SCALE DRAWING</b>	
<b>TITLE: WIRING INSTL-BODY, 110V</b>	
SHEET 5	REV <b>183551</b>
25-Jul-2014	

\* 183551 \* A