



DANGER

Danger of electrical shock, burns or death. Always remove all power sources before attempting any repair, service or diagnostic work. Power can be present from shore power, generator, inverter or battery. All power sources must be disabled and secured before performing any service.

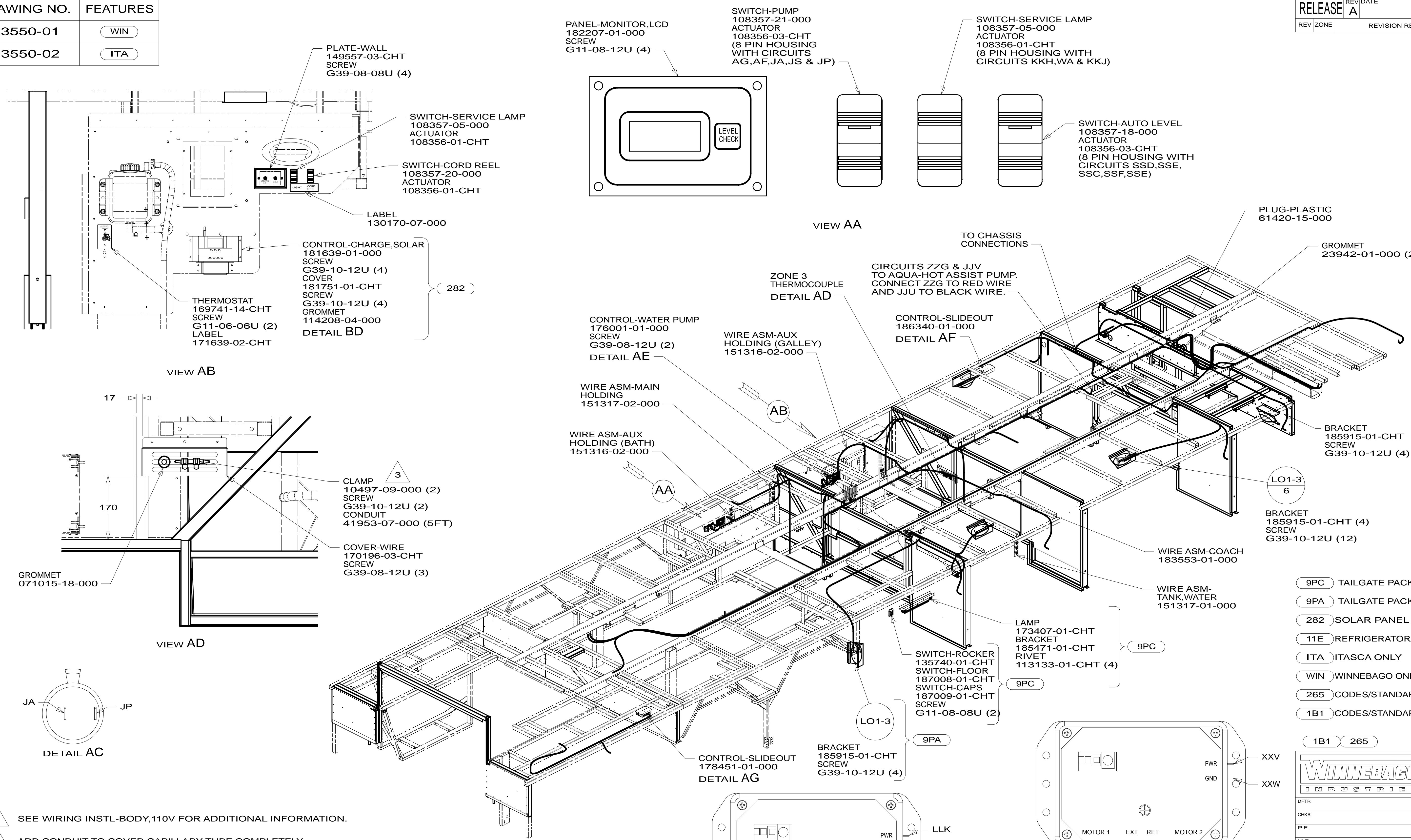


CAUTION

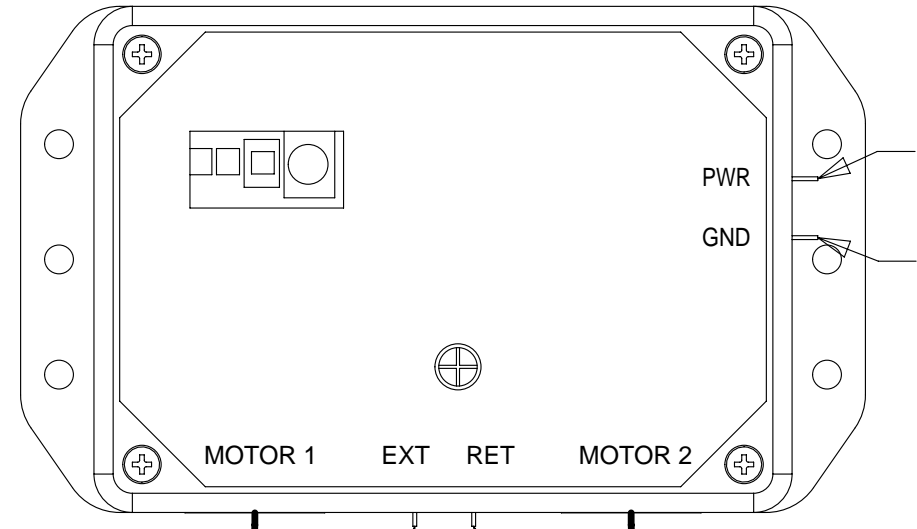
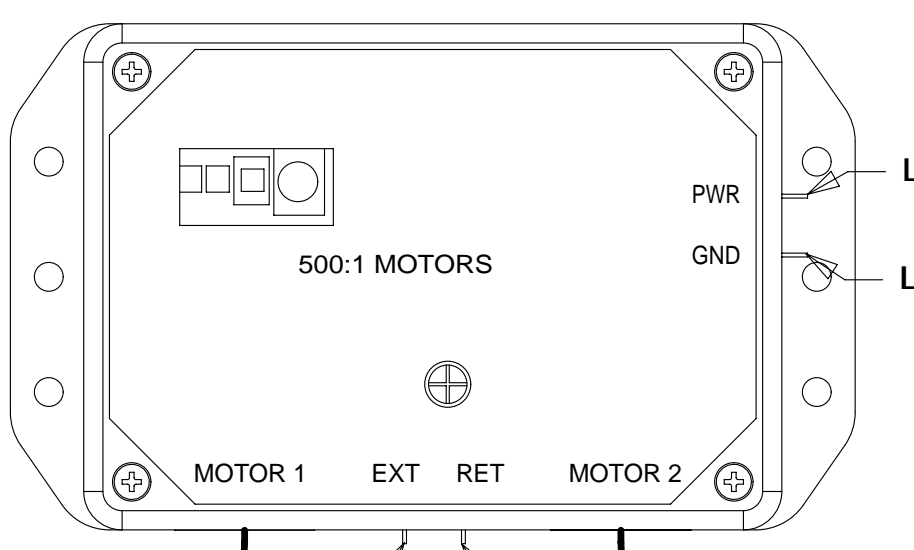
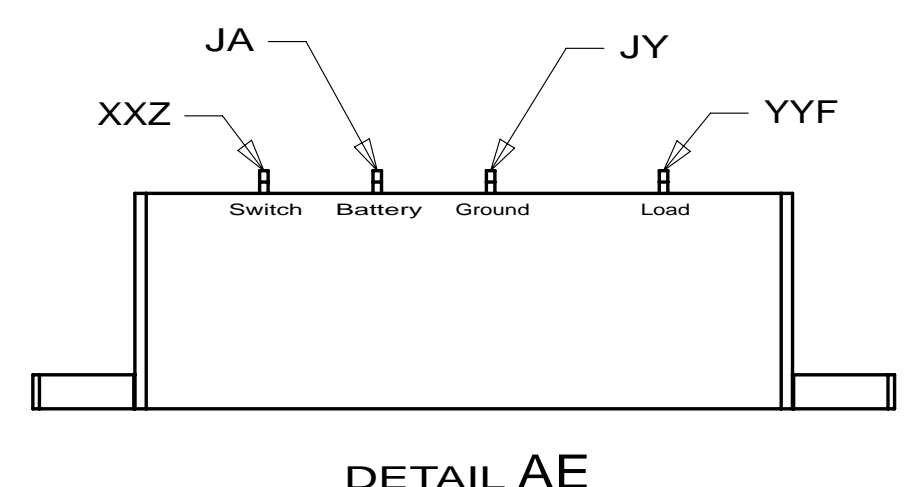
If you lack the skills, tools or equipment to perform diagnostic or repair work leave such work to an authorized Winnebago Industries dealer or other qualified shop.

DRAWING NO.	FEATURES
183550-01	(WIN)
183550-02	(ITA)

RELEASE	REV/DATE	DWG NO	183550
REV ZONE	REVISION RECORD	DATE	DFT-ORIG



- NOTES:
- ALL WIRES TO BE SECURED WITH CLAMP 10495 OR 10497 OR WIRE TIE 8343 OR 108046 EVERY 600MM, USE SCREW G67-XX-XXX OR G56-XX-XXX AS APPROPRIATE FOR INSTALLATION.
 - ROUTE TANK SENSOR WIRES SO THEY DO NOT PASS OVER SENSORS. USE WIRE TIE MOUNT 155366-01-000 AND WIRE TIE 8343-01-000 AS NEEDED. TANK SURFACE MUST BE CLEANED USING ISOPROPYL ALCOHOL AND PRIMED WITH PRIMER 94.
 - SEE WIRING INSTL-BODY,110V FOR ADDITIONAL INFORMATION.
 - ADD CONDUIT TO COVER CAPILLARY TUBE COMPLETELY. CLAMP OR WIRE TIE TO FRAME TUBES.



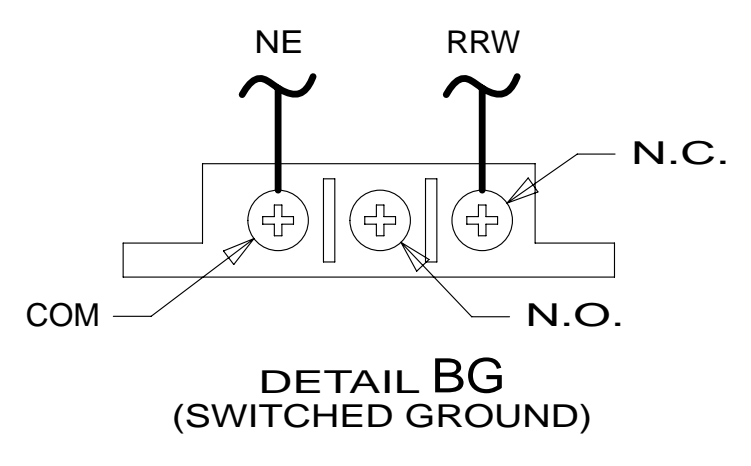
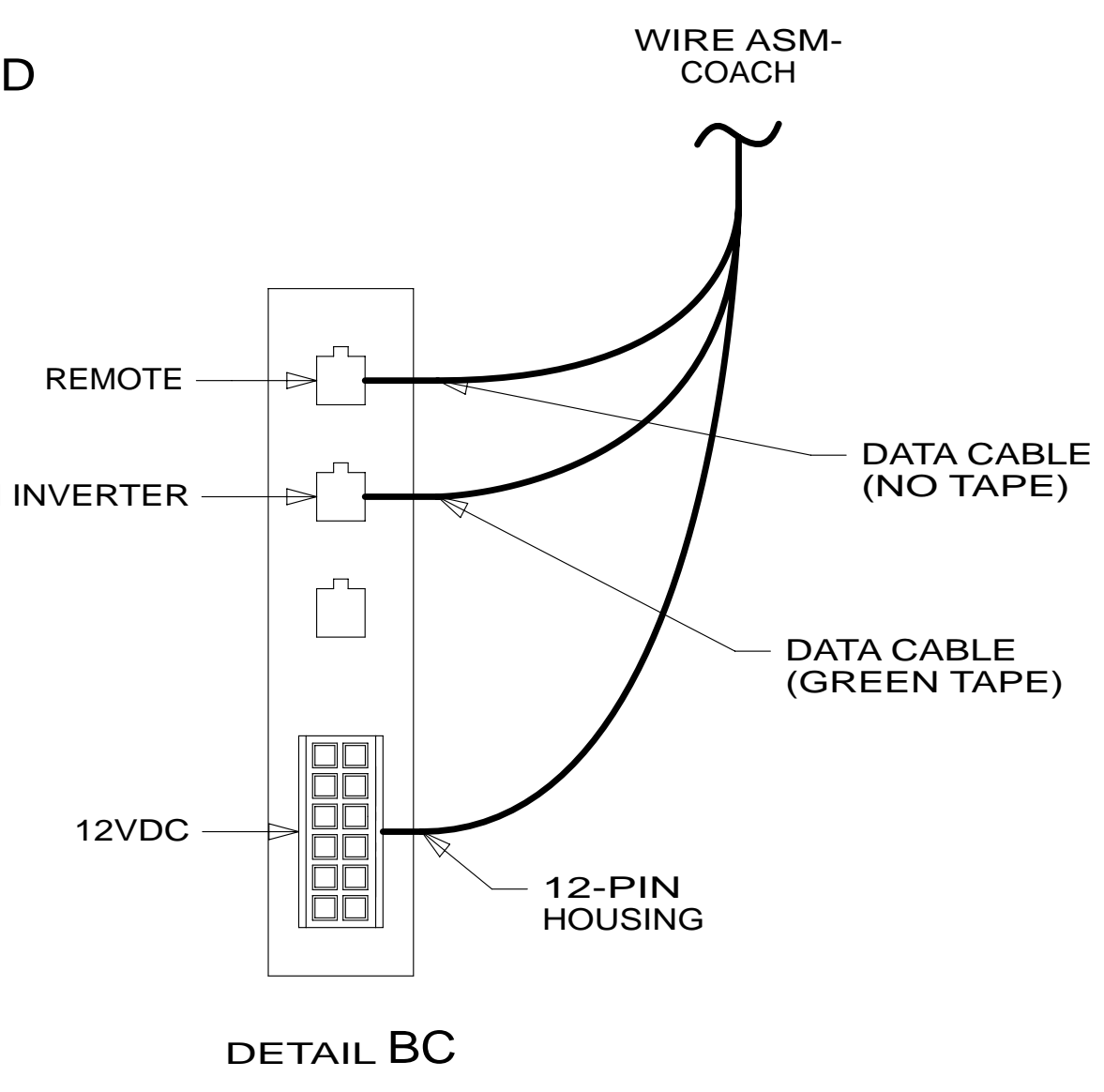
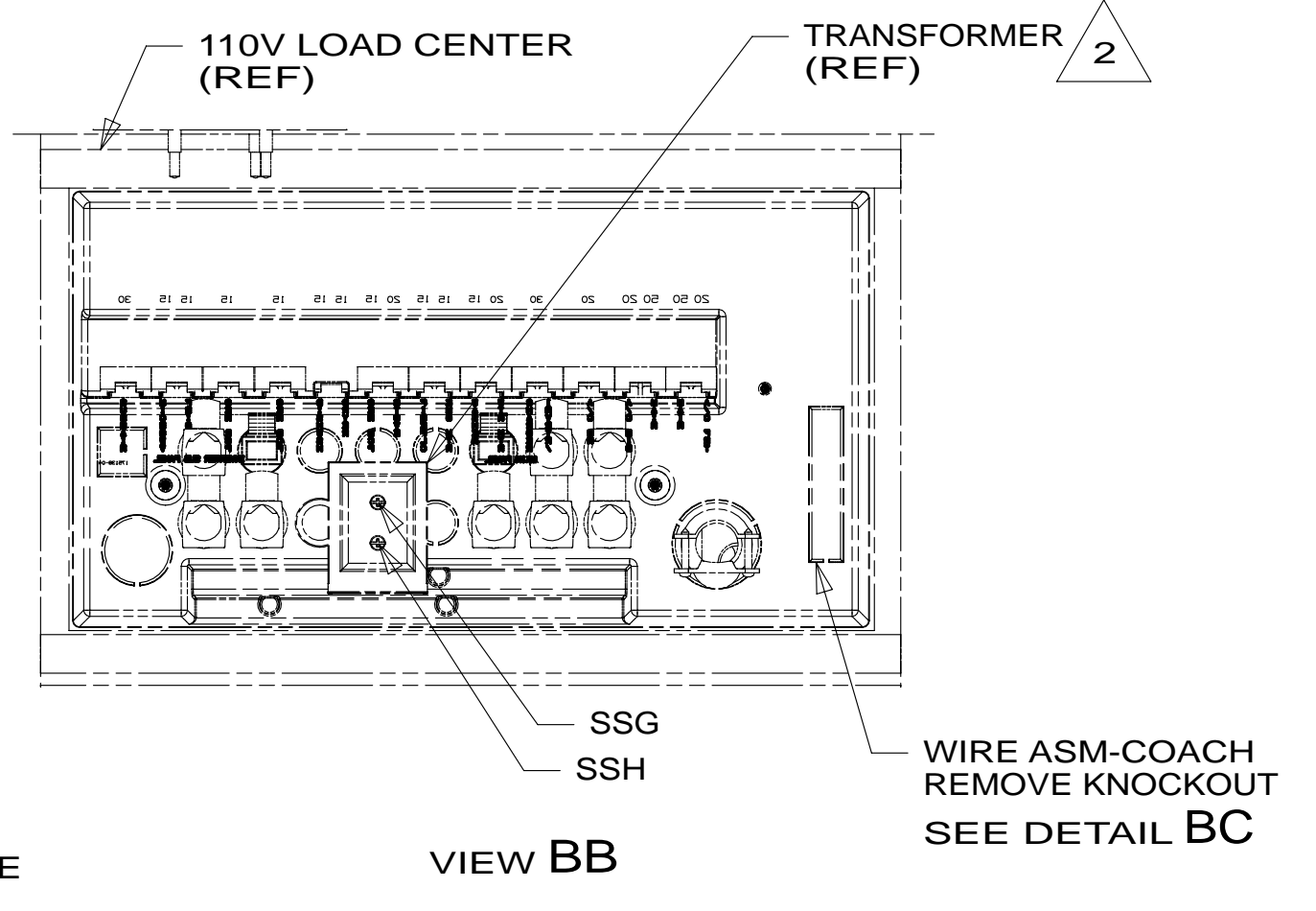
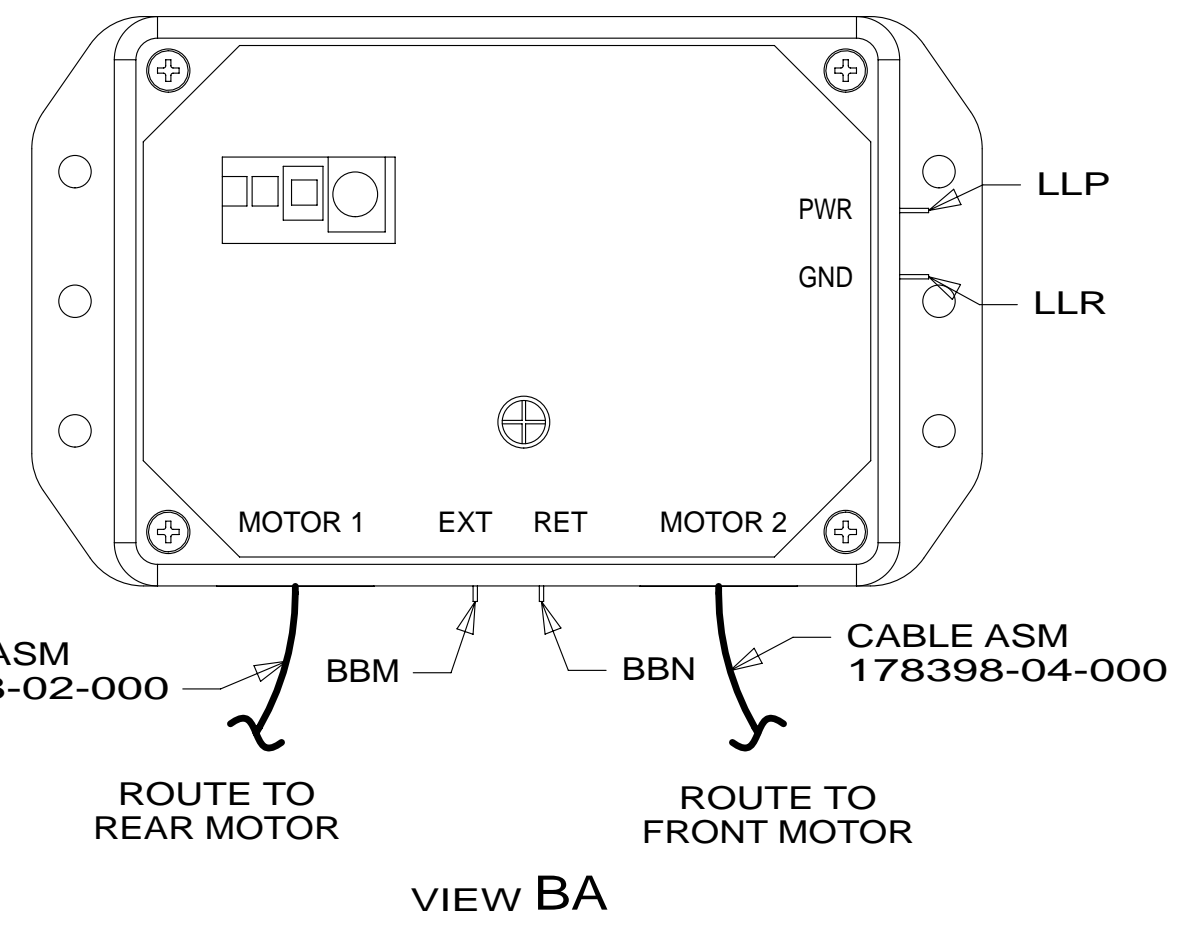
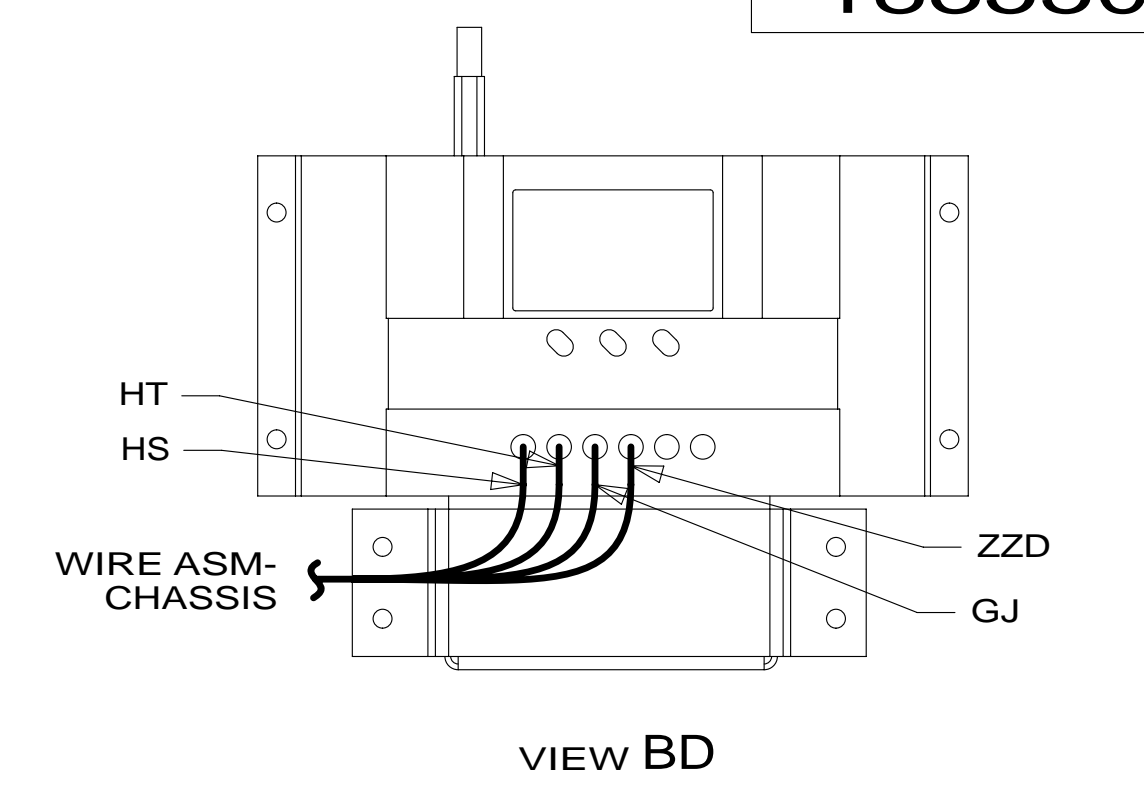
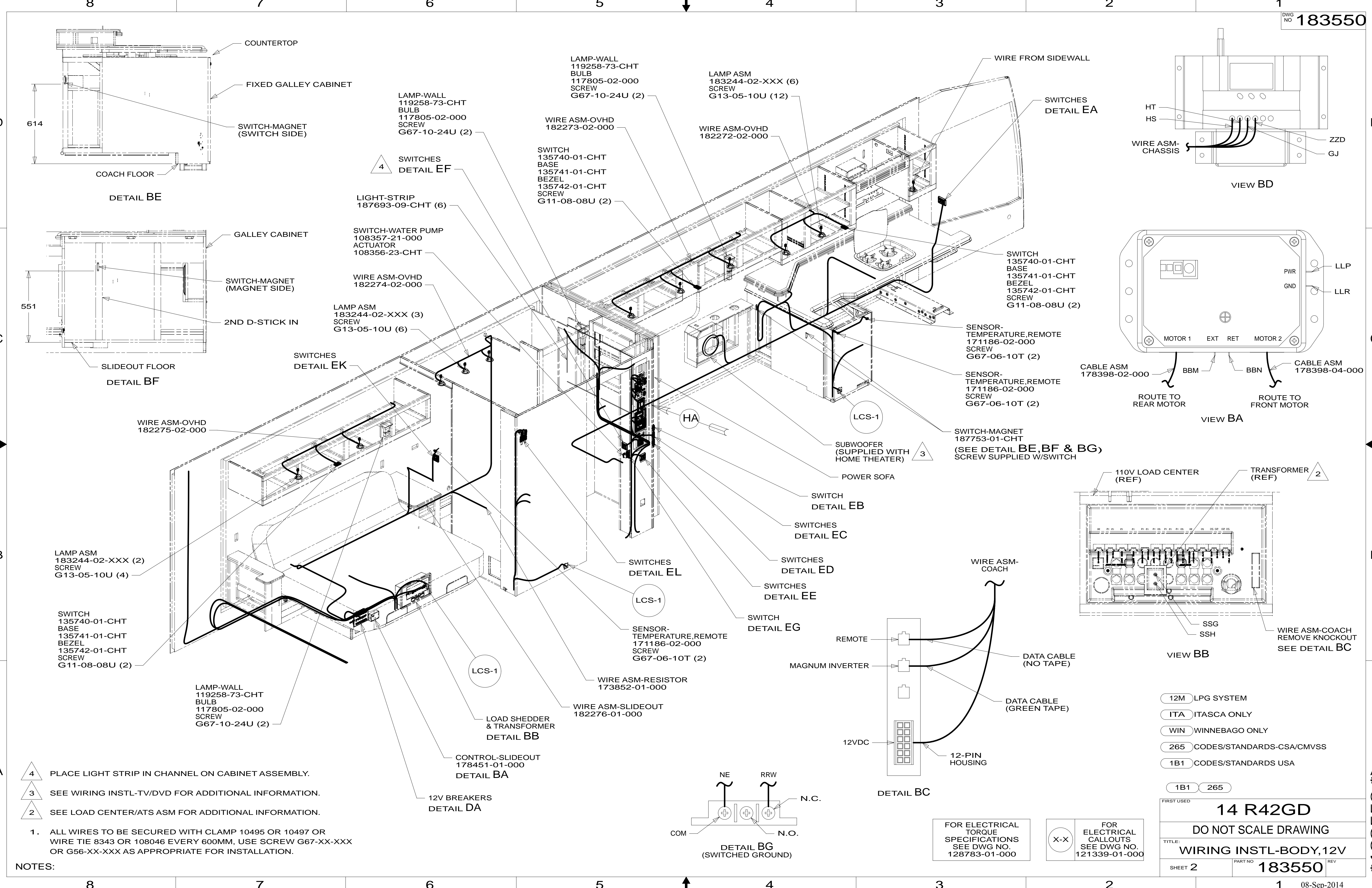
- (9PC) TAILGATE PACKAGE
- (9PA) TAILGATE PACKAGE WITHOUT
- (282) SOLAR PANEL - 100 WATT
- (11E) REFRIGERATOR/FREEZER PORTABL
- (ITA) ITASCA ONLY
- (WIN) WINNEBAGO ONLY
- (265) CODES/STANDARDS-CSA/CMVSS
- (1B1) CODES/STANDARDS USA

COPYRIGHT 2014 WINNEBAGO INDUSTRIES, INC.	
ALL DIMENSIONS ARE IN MILLIMETERS	
FIRST USED	
14 R42GD	
UNSPECIFIED TOLERANCES ARE:	
WHOLE DIM (X)	: 3
ONE-PLACE (X.X)	: 1.5
TWO-PLACE (X.XX)	: 0.50
ANGLE	: 1°
THIRD ANGLE PROJECTION	
DO NOT SCALE DRAWING	REFER TO ES0018 FOR FASTENER TIGHTENING GUIDELINES
TITLE: WIRING INSTL-BODY,12V	
SHEET 1 OF 8	PART NO 183550 REV
REF:	1 08-Sep-2014

FOR ELECTRICAL TORQUE SPECIFICATIONS SEE DWG NO. 128783-01-000

FOR ELECTRICAL CALLOUTS SEE DWG NO. 121339-01-000

* 183550 *



- NOTES:**
- 4 PLACE LIGHT STRIP IN CHANNEL ON CABINET ASSEMBLY.
 - 3 SEE WIRING INSTL-TV/DVD FOR ADDITIONAL INFORMATION.
 - 2 SEE LOAD CENTER/ATS ASM FOR ADDITIONAL INFORMATION.
1. ALL WIRES TO BE SECURED WITH CLAMP 10495 OR 10497 OR WIRE TIE 8343 OR 108046 EVERY 600MM, USE SCREW G67-XX-XXX OR G56-XX-XXX AS APPROPRIATE FOR INSTALLATION.

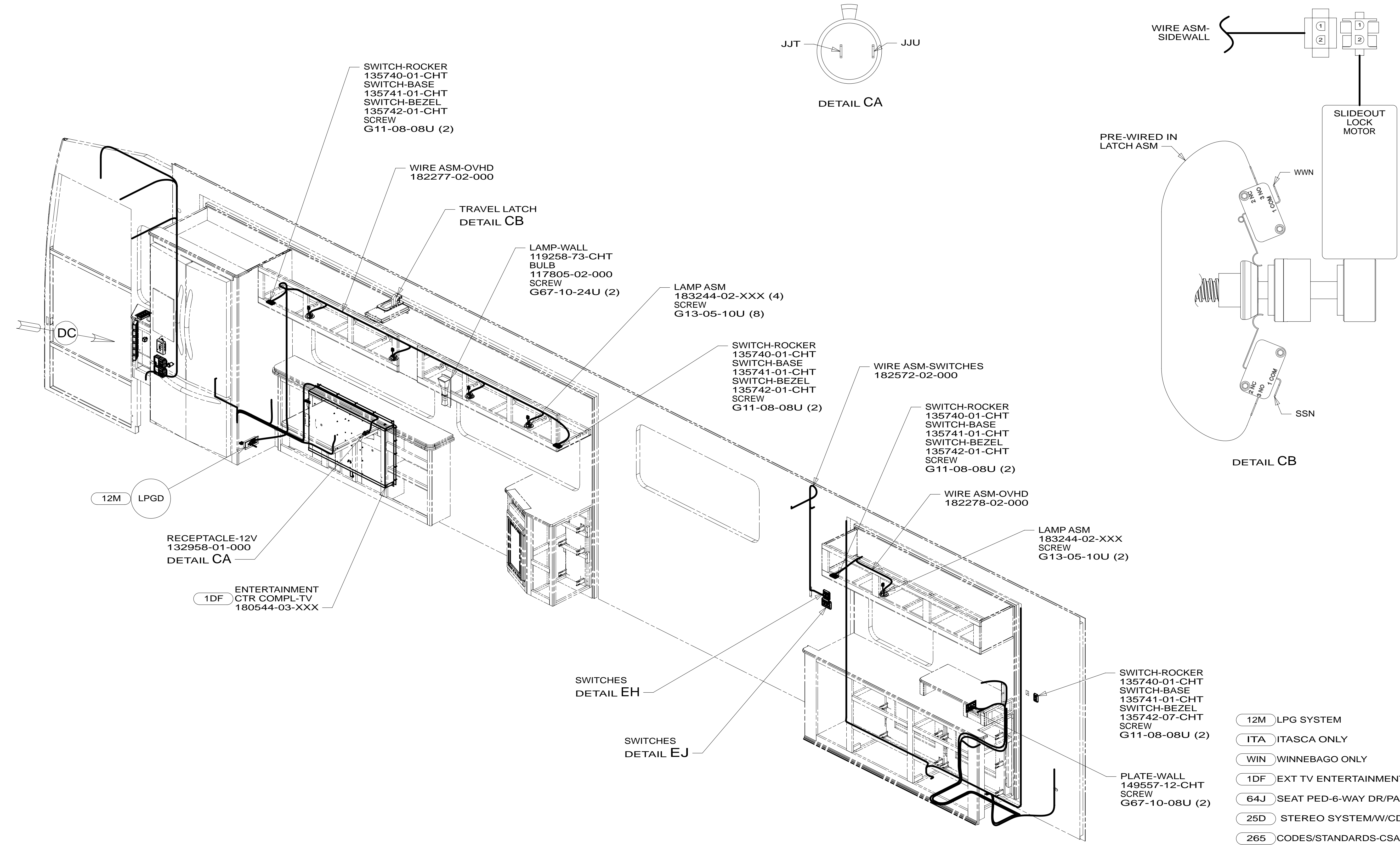
FOR ELECTRICAL TORQUE SPECIFICATIONS SEE DWG NO. 128783-01-000

FOR ELECTRICAL CALLOUTS SEE DWG NO. 121339-01-000

- 12M LPG SYSTEM
- ITA ITASCA ONLY
- WIN WINNEBAGO ONLY
- 265 CODES/STANDARDS-CSA/CMVSS
- 1B1 CODES/STANDARDS USA

FIRST USED	
14 R42GD	
DO NOT SCALE DRAWING	
WIRING INSTL-BODY, 12V	
SHEET 2	PART NO 183550 REV
08-Sep-2014	

* 183550 * A



1. ALL WIRES TO BE SECURED WITH CLAMP 10495 OR 10497 OR WIRE TIE 8343 OR 108046 EVERY 600MM, USE SCREW G67-XX-XXX OR G56-XX-XXX AS APPROPRIATE FOR INSTALLATION.

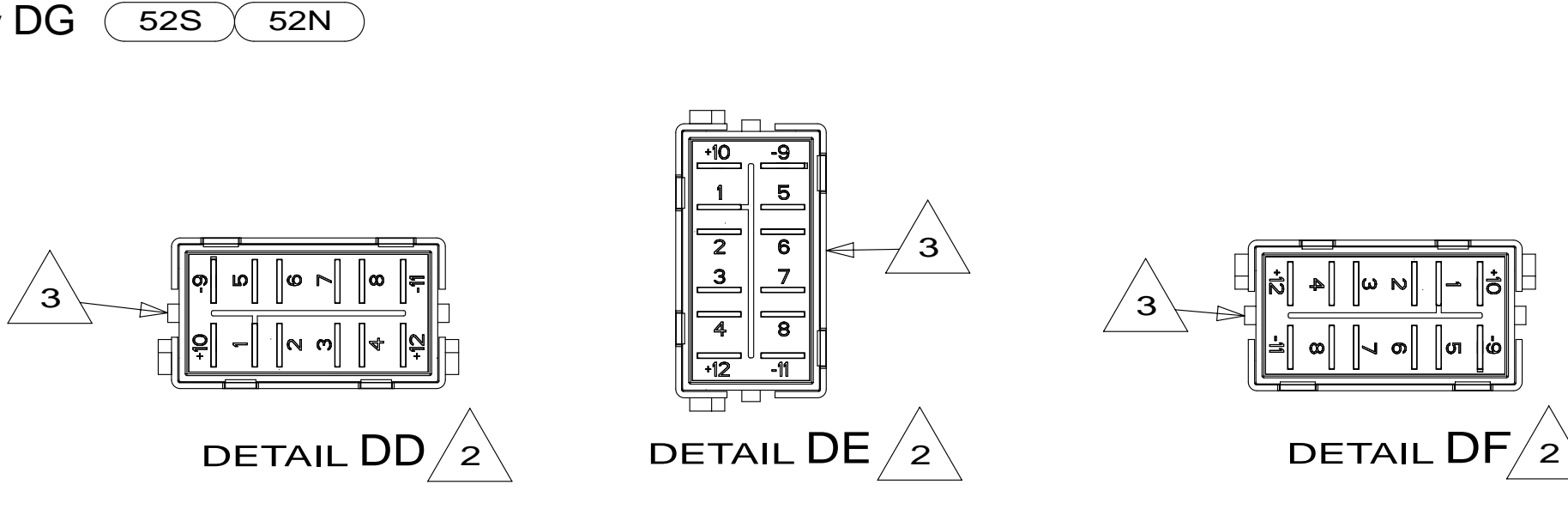
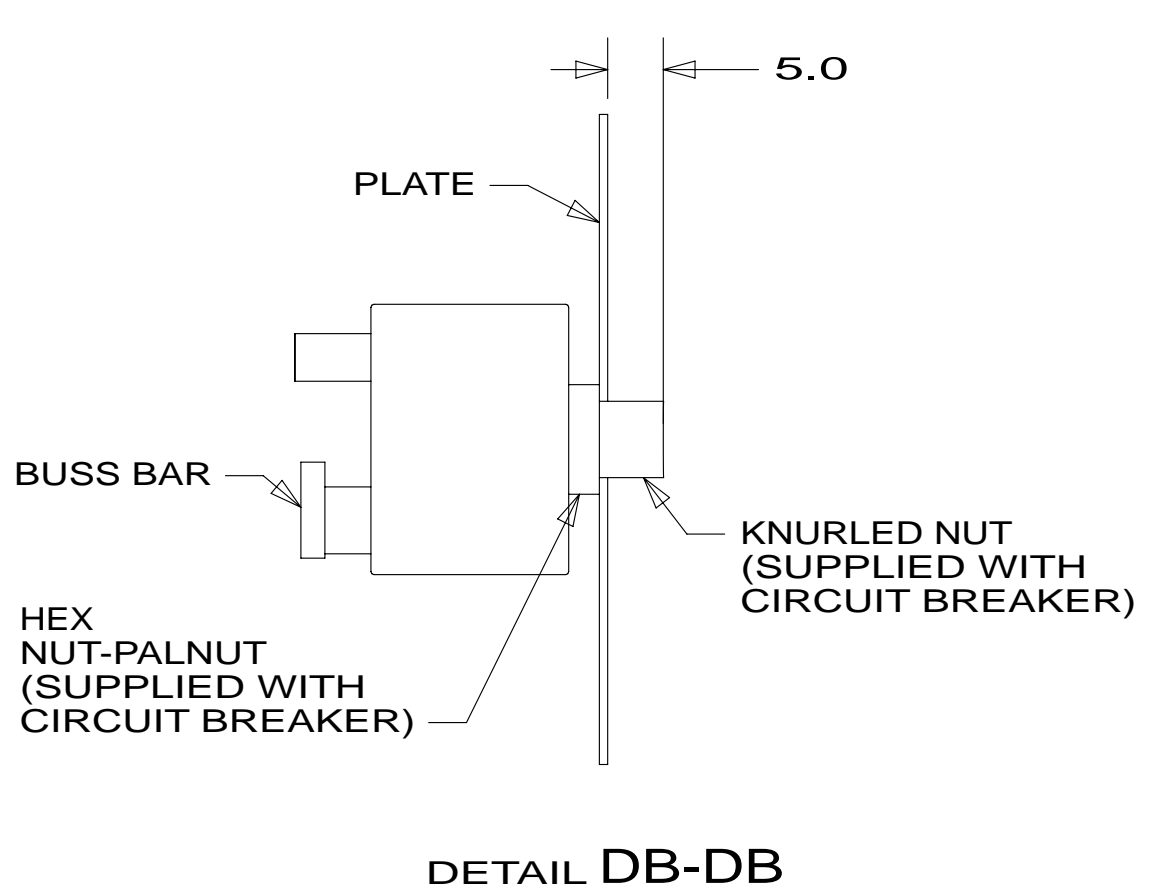
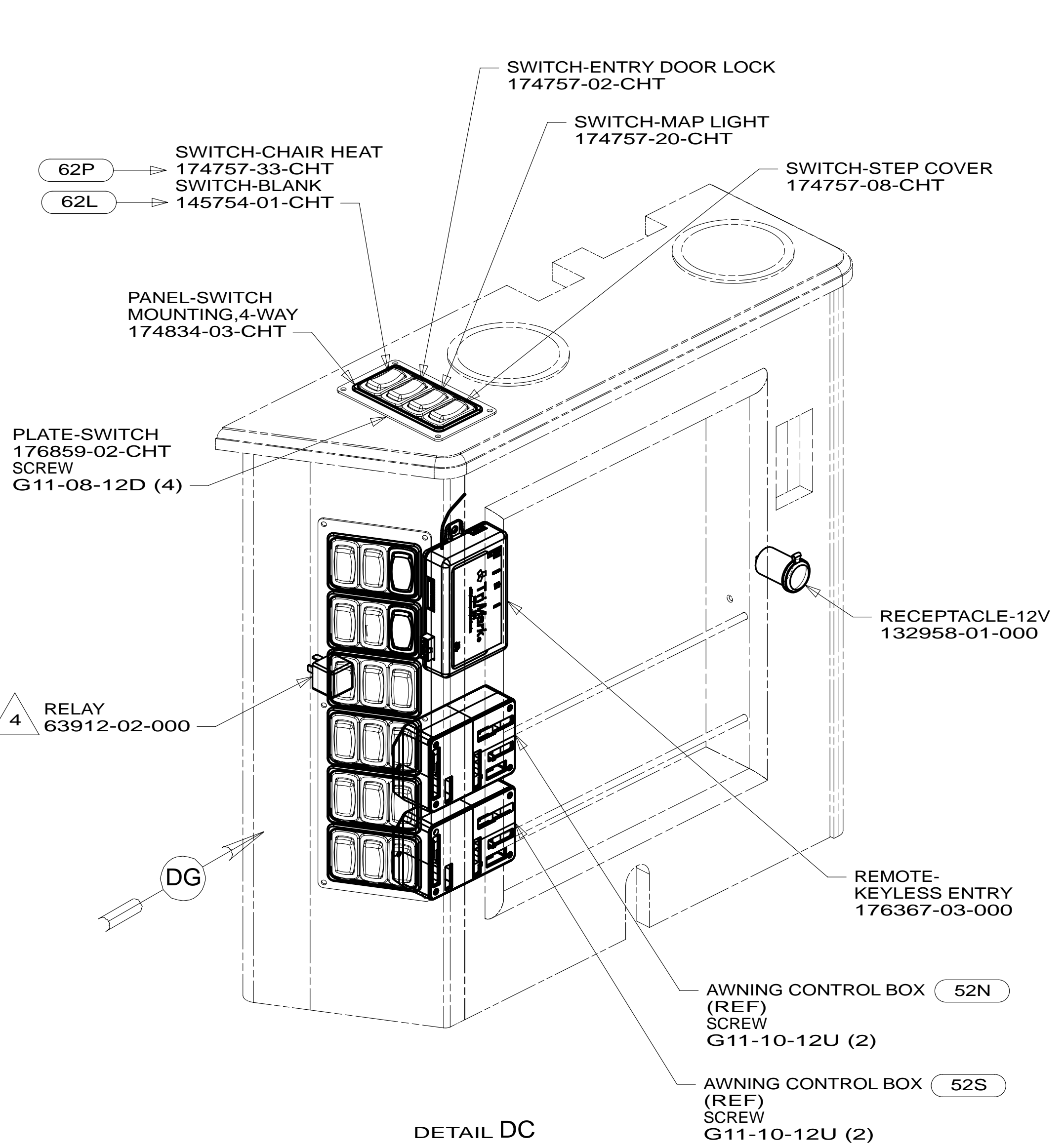
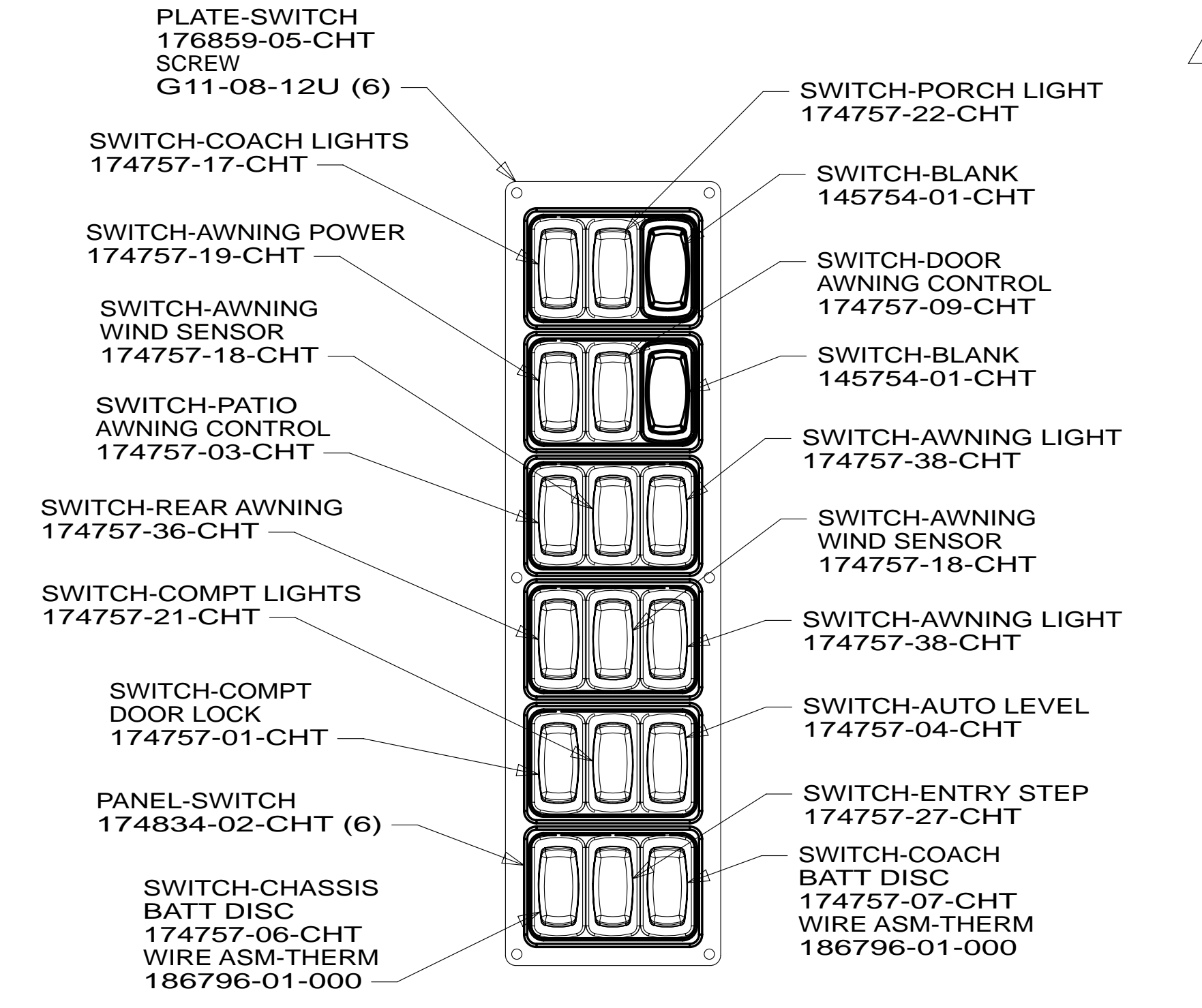
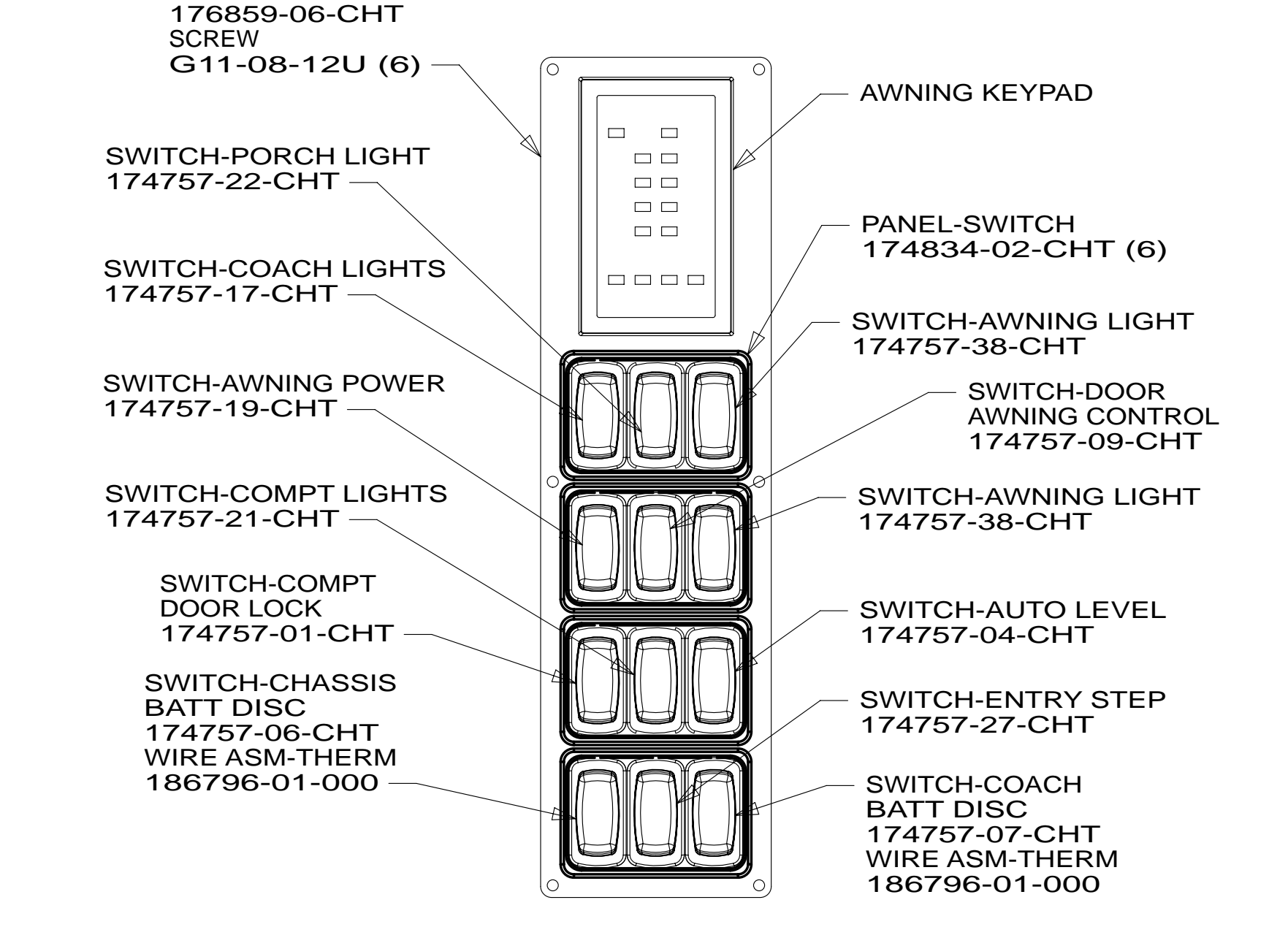
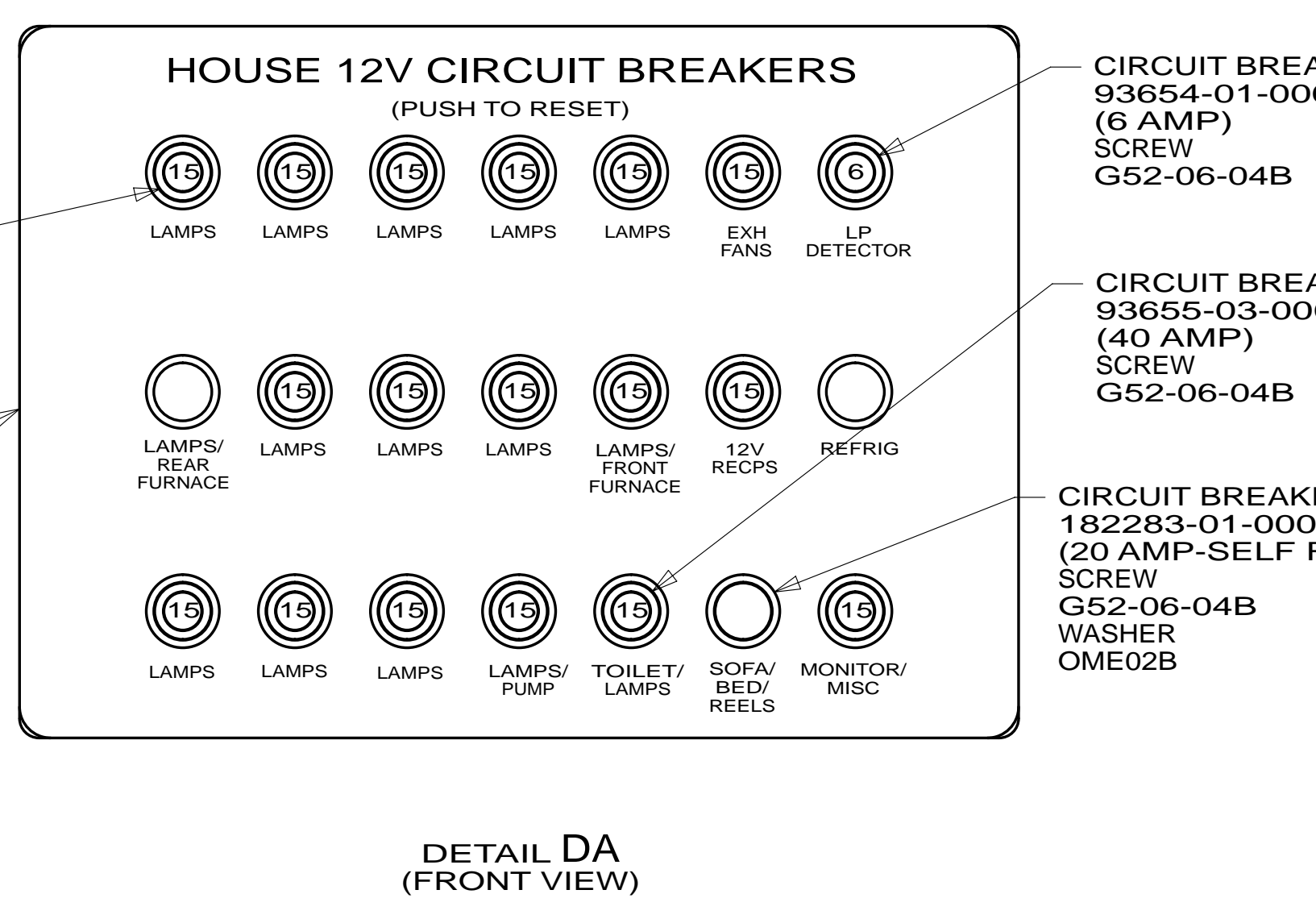
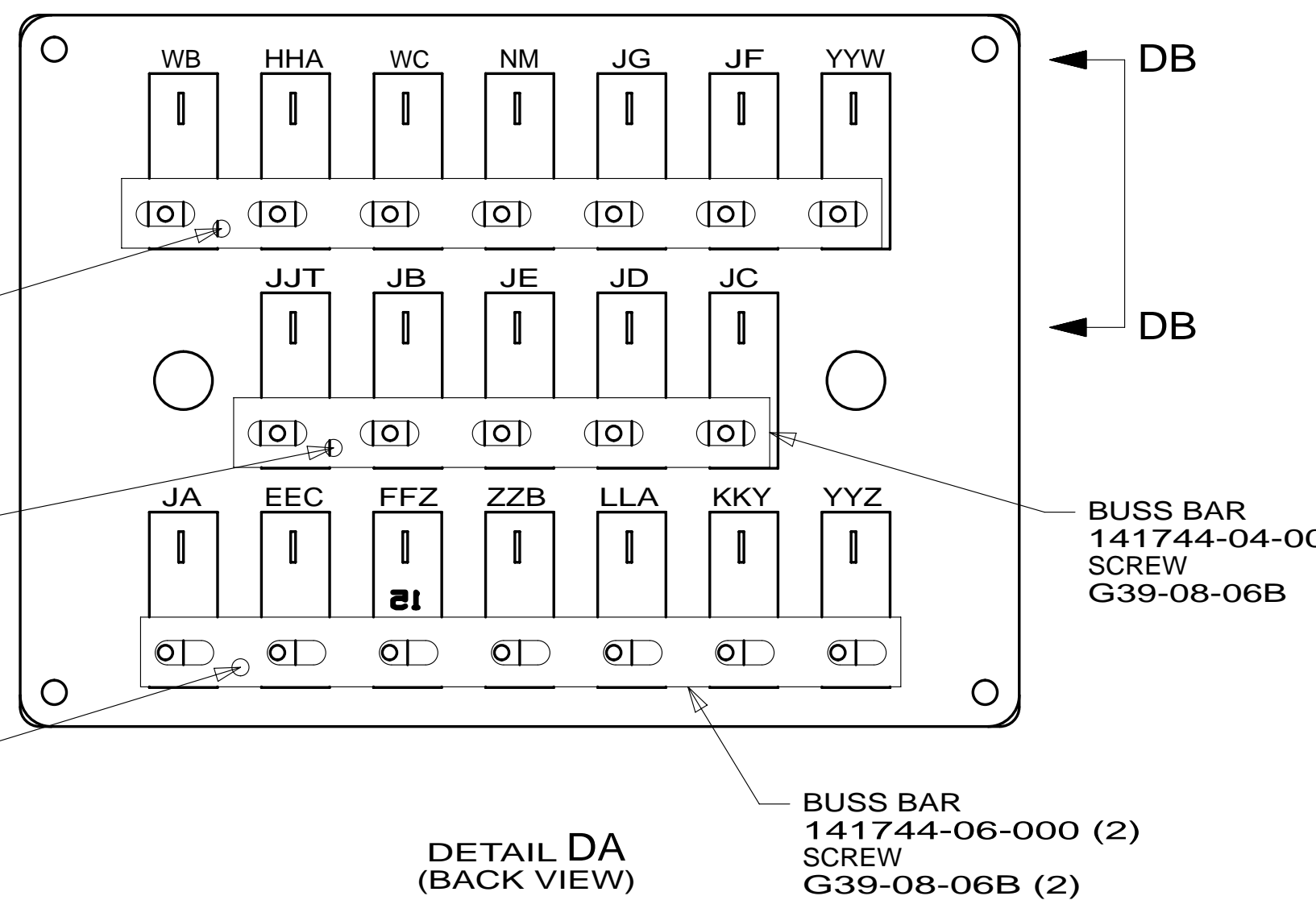
NOTES:

FOR ELECTRICAL
TORQUE
SPECIFICATIONS
SEE DWG NO.
128783-01-000

FOR
ELECTRICAL
CALLOUTS
SEE DWG NO.
121339-01-000

- 12M LPG SYSTEM
- ITA ITASCA ONLY
- WIN WINNEBAGO ONLY
- 1DF EXT TV ENTERTAINMENT CENTER
- 64J SEAT PED-6-WAY DR/PASS POWER
- 25D STEREO SYSTEM/W/CD/DVD REAR
- 265 CODES/STANDARDS-CSA/CMVSS
- 1B1 CODES/STANDARDS USA

FIRST USED	
14 R42GD	
DO NOT SCALE DRAWING	
TITLE: WIRING INSTL-BODY,12V	
SHEET 3	PART NO 183550



- 4 SCREW RELAY HOUSING TO SIDEWALL WITH SCREW G11-10-12U.
- 3 WITH SWITCH INSTALLED, THIS SIDE OF SWITCH WILL FACE LEFT SIDEWALL.
- 2 DETAIL IS LOOKING AT SWITCH FROM THE BACKSIDE OF SWITCH WHEN IT IS INSTALLED.

1. ALL WIRES TO BE SECURED WITH CLAMP 10495 OR 10497 OR WIRE TIE 8343 OR 108046 EVERY 600MM, USE SCREW G67-XX-XXX OR G56-XX-XXX AS APPROPRIATE FOR INSTALLATION.

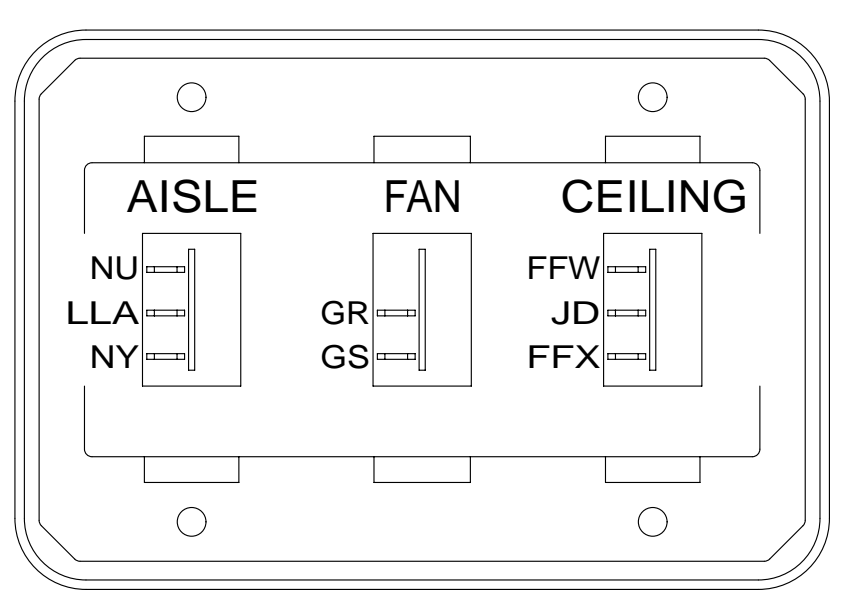
- 52N AWNING - PATIO, ELECTRIC
- 52S AWNING - 2ND PATIO, ELECTRIC
- 62P SEATS-DR/PASS UL/HEAT/TABLET
- 62L SEATS-LUXURY CAB
- 63H AWNING (2) PATIO, ARMLESS
- 265 CODES/STANDARDS-CSA/CMVSS
- 1B1 CODES/STANDARDS USA

1B1	265
FIRST USED	
14 R42GD	
DO NOT SCALE DRAWING	
TITLE: WIRING INSTL-BODY, 12V	
SHEET 4	PART NO 183550 REV
08-Sep-2014	

FOR ELECTRICAL TORQUE SPECIFICATIONS SEE DWG NO. 128783-01-000

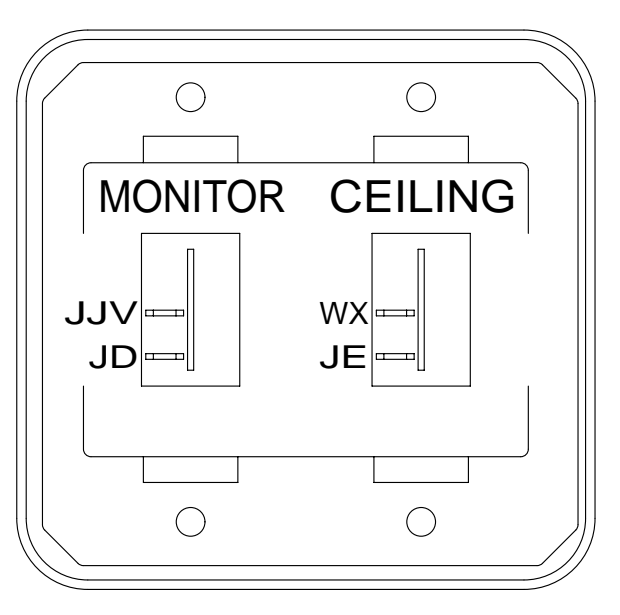
FOR ELECTRICAL CALLOUTS SEE DWG NO. 121339-01-000

* 183550



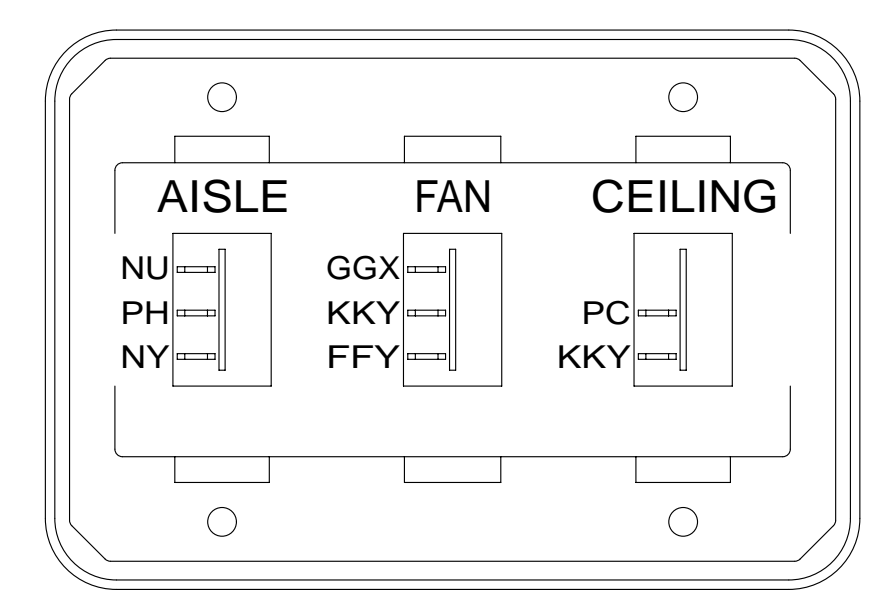
SWITCH-ROCKER
135740-01-CHT
135740-02-CHT (2)
SWITCH-BASE
135741-03-CHT
SWITCH-BEZEL
135742-23-CHT
SCREW
G11-08-08U (4)

DETAIL EA



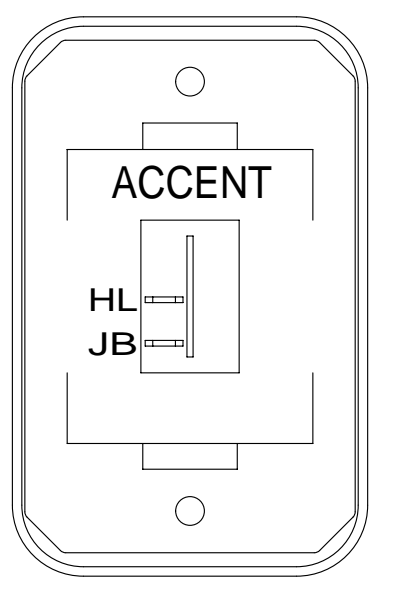
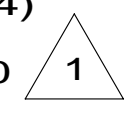
SWITCH-ROCKER
135740-01-CHT (2)
SWITCH-BASE
135741-02-CHT
SWITCH-BEZEL
135742-31-CHT
SCREW
G11-08-08U (4)

DETAIL EE



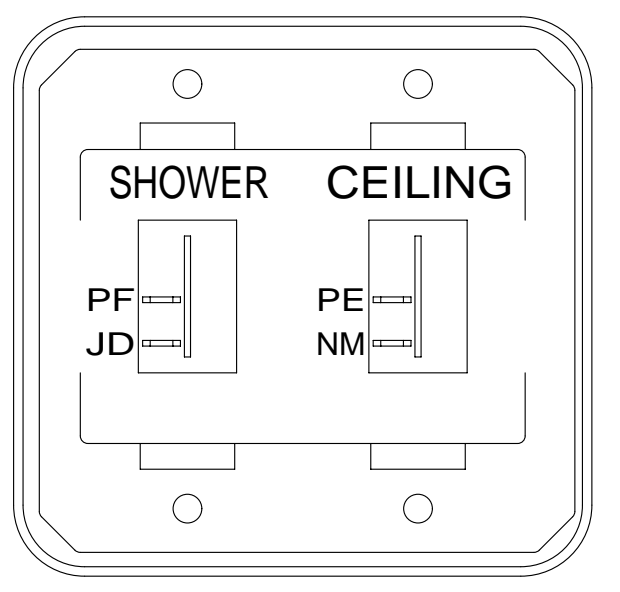
SWITCH-ROCKER
135740-01-CHT
135740-02-CHT
135740-04-CHT
SWITCH-BASE
135741-03-CHT
SWITCH-BEZEL
135742-23-CHT
SCREW
G11-08-08U (4)
RESISTER-FAN
140195-01-000

DETAIL EJ



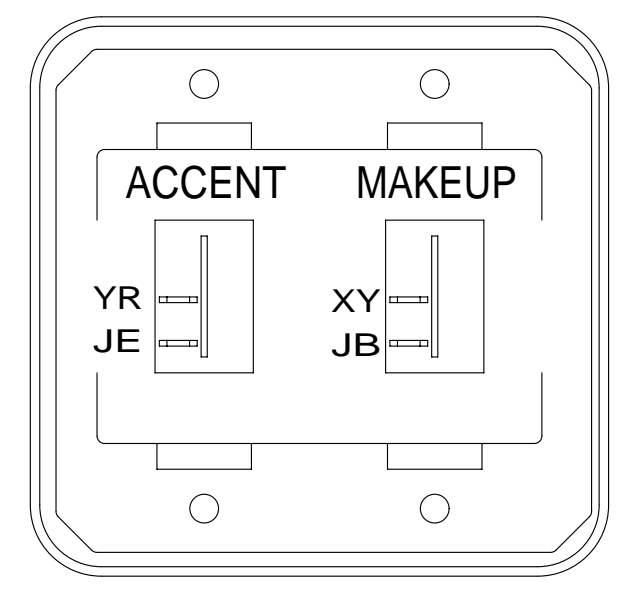
SWITCH-ROCKER
135740-01-CHT
SWITCH-BASE
135741-01-CHT
SWITCH-BEZEL
135742-50-CHT
SCREW
G11-08-08U (2)

DETAIL EB



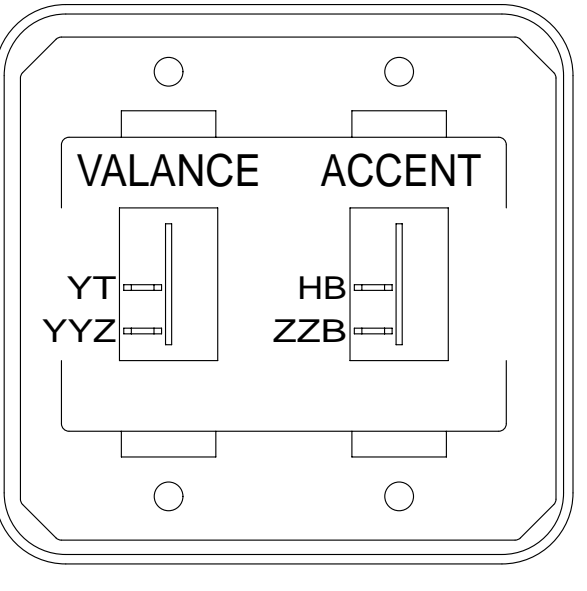
SWITCH-ROCKER
135740-01-CHT (2)
SWITCH-BASE
135741-02-CHT
SWITCH-BEZEL
135742-15-CHT
SCREW
G11-08-08U (4)

DETAIL EF



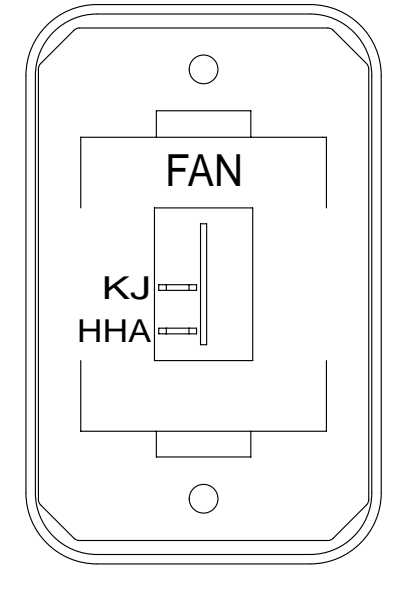
SWITCH-ROCKER
135740-01-CHT (2)
SWITCH-BASE
135741-02-CHT
SWITCH-BEZEL
135742-46-CHT
SCREW
G11-08-08U (4)

DETAIL EK



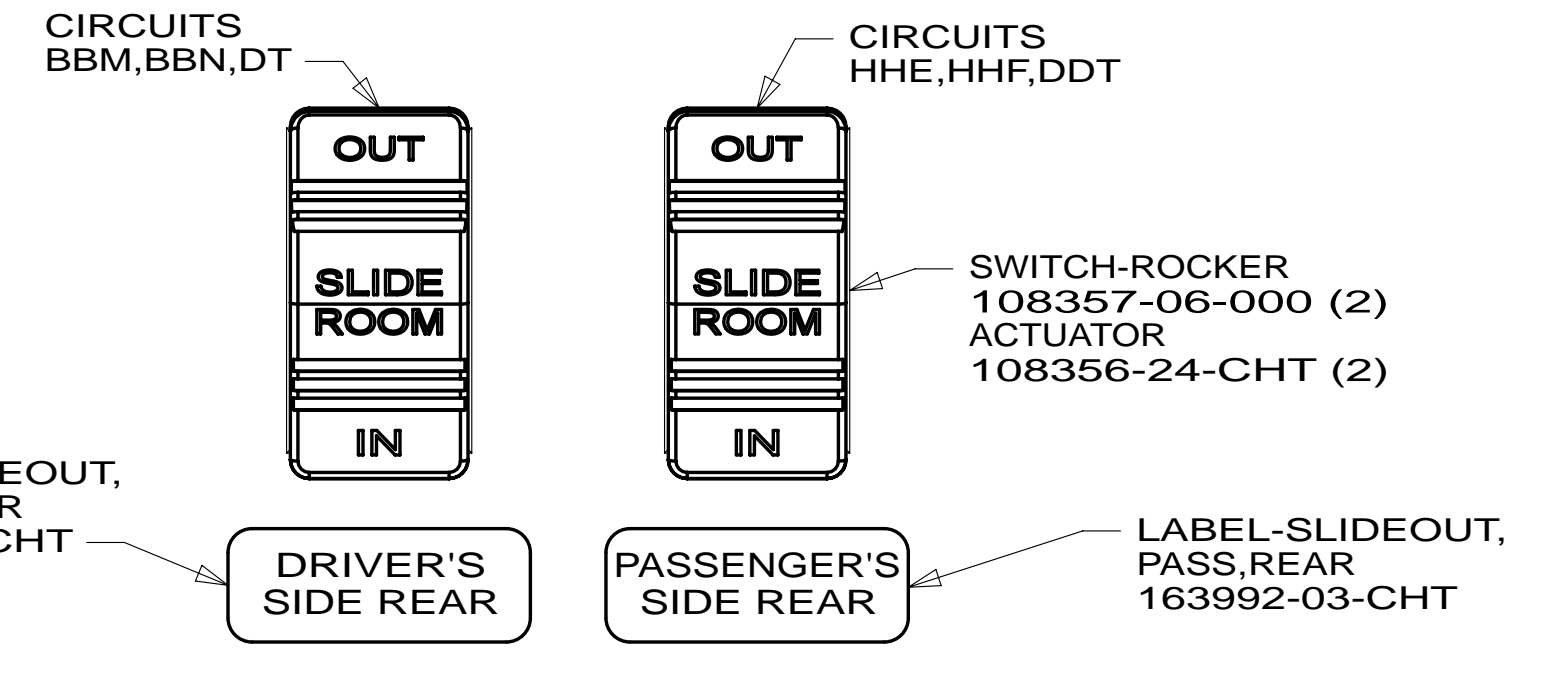
SWITCH-ROCKER
135740-01-CHT (2)
SWITCH-BASE
135741-02-CHT
SWITCH-BEZEL
135742-36-CHT
SCREW
G11-08-08U (4)

DETAIL EC



SWITCH-ROCKER
135740-01-CHT
SWITCH-BASE
135741-01-CHT
SWITCH-BEZEL
135742-12-CHT
SCREW
G11-08-08U (2)

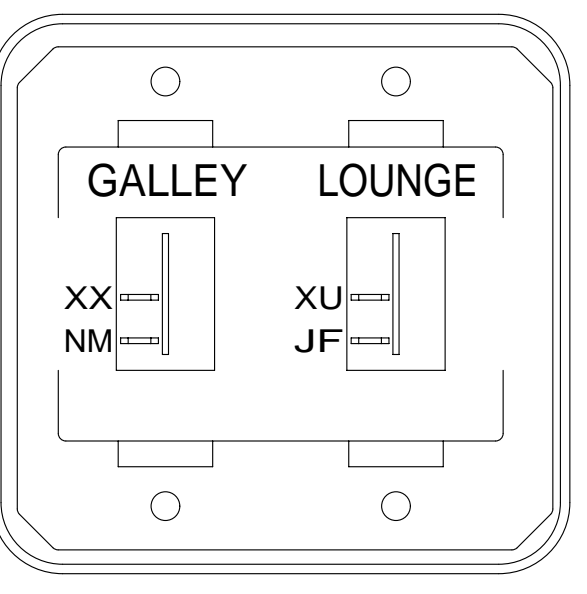
DETAIL EG



WARNING
CRUSH HAZARD. Keep people and objects clear of the inside and outside of the slideout room when operating. Failure to comply could result in death or serious injury.

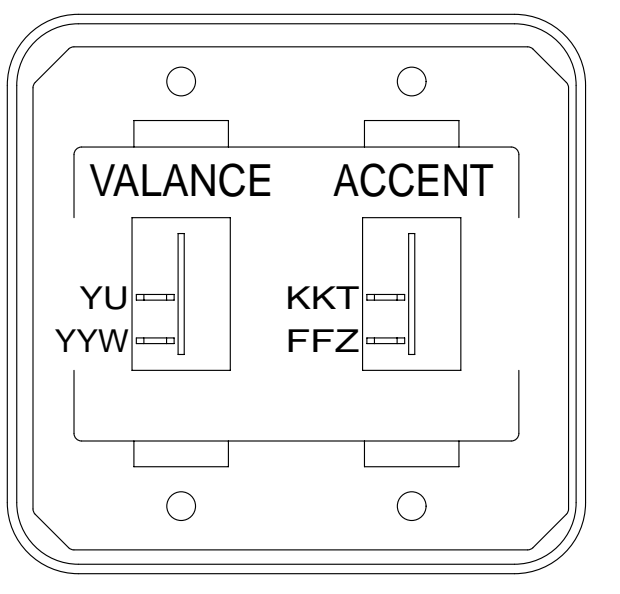
LABEL-WARNING, SLIDEOUT
116549-02-000

DETAIL EL



SWITCH-ROCKER
135740-01-CHT (2)
SWITCH-BASE
135741-02-CHT
SWITCH-BEZEL
135742-18-CHT
SCREW
G11-08-08U (4)

DETAIL ED



SWITCH-ROCKER
135740-01-CHT (2)
SWITCH-BASE
135741-02-CHT
SWITCH-BEZEL
135742-36-CHT
SCREW
G11-08-08U (4)

DETAIL EH

1 CONNECT WIRE ASM-RESISTOR, FAN TO 2-PIN HOUSING LOCATED BY THE SWITCH WIRES.

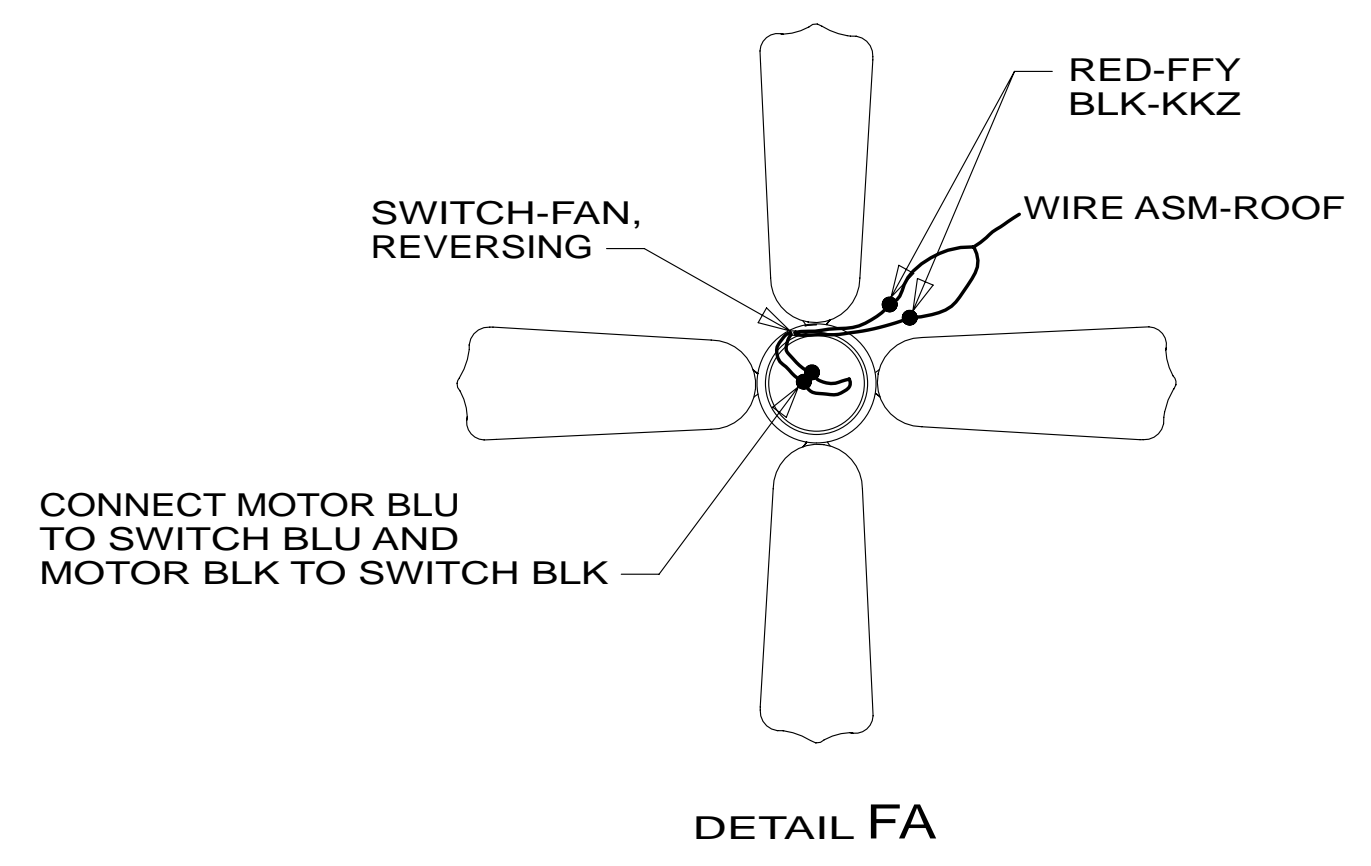
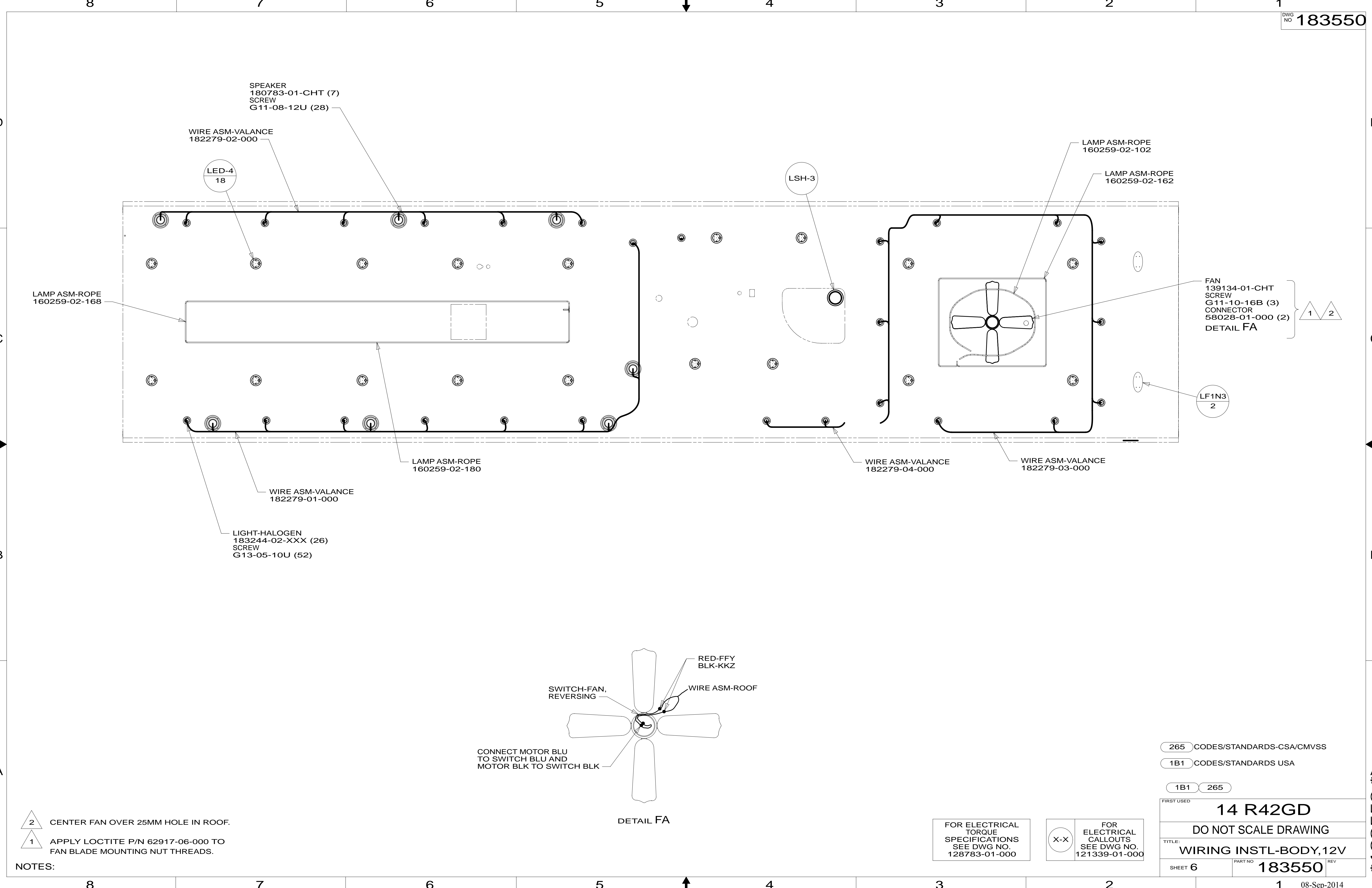
NOTES:

FOR ELECTRICAL TORQUE SPECIFICATIONS SEE DWG NO. 128783-01-000

X-X FOR ELECTRICAL CALLOUTS SEE DWG NO. 121339-01-000

265 CODES/STANDARDS-CSA/CMVSS
1B1 CODES/STANDARDS USA
1B1 265

FIRST USED	14 R42GD
TITLE:	DO NOT SCALE DRAWING
	WIRING INSTL-BODY, 12V
SHEET 5	PART NO 183550 REV



- NOTES:
- 2 CENTER FAN OVER 25MM HOLE IN ROOF.
 - 1 APPLY LOCTITE P/N 62917-06-000 TO FAN BLADE MOUNTING NUT THREADS.

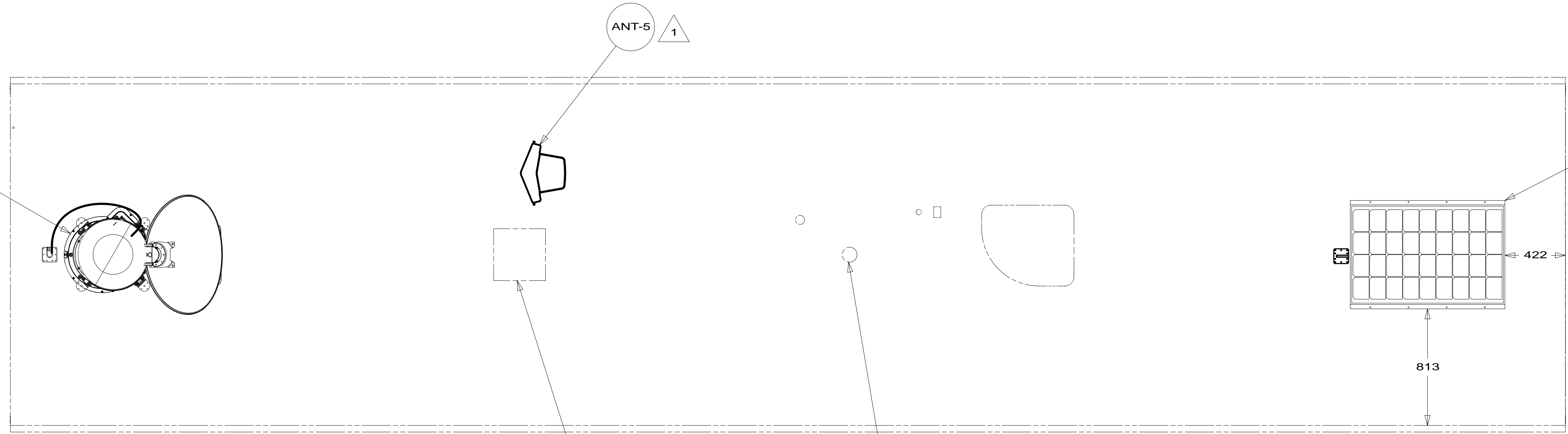
FOR ELECTRICAL TORQUE SPECIFICATIONS SEE DWG NO. 128783-01-000

FOR ELECTRICAL CALLOUTS SEE DWG NO. 121339-01-000

- 265 CODES/STANDARDS-CSA/CMVSS
- 1B1 CODES/STANDARDS USA
- 1B1 265

FIRST USED	14 R42GD	
DO NOT SCALE DRAWING		
TITLE: WIRING INSTL-BODY, 12V		
SHEET 6	PART NO 183550	REV

* 183550 *

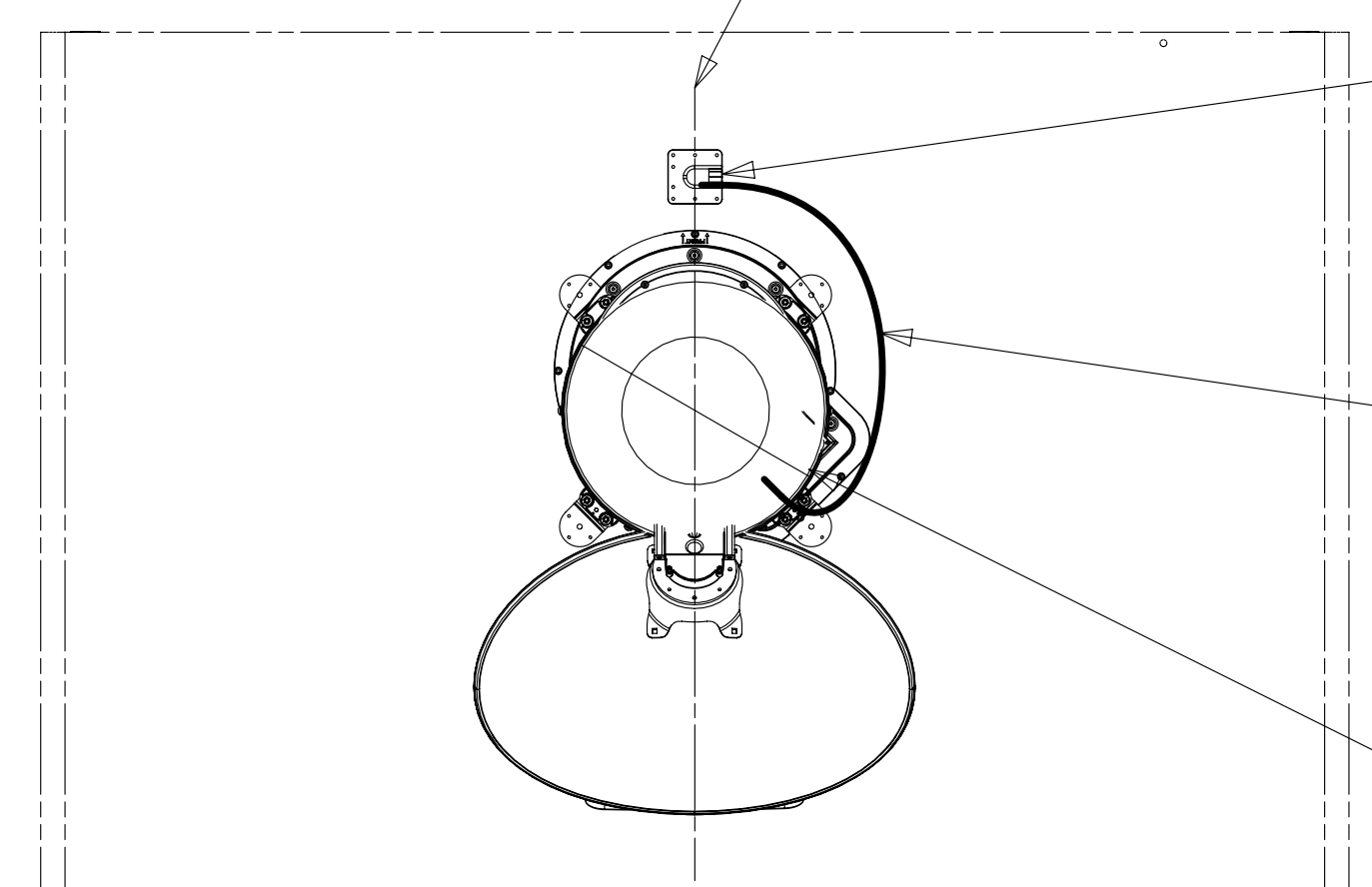


- 1 48P DI-3
DETAIL GC
- 1 783 DA-4
DETAIL GB

GALLEY VENT
HHA-RED
HHB-WHT
GR-ORG
GS-GRN
CONNECTOR
58028-01-000 (4)

BATH VENT
KJ-RED
HHB-BLK
CONNECTOR
58028-01-000 (2)

THE SATELLITE DISH
AND WIRE CONNECTIONS
ARE TO BE PLACED ON
THE CENTERLINE OF THE
MOTORHOME FACING FORWARD.



DETAIL GB

SEPARATE CABLES AND
INSTALL WIRE COVER
OVER HOLE IN ROOF
ASM WITH CABLES EXITING
ON PASSENGERS SIDE.

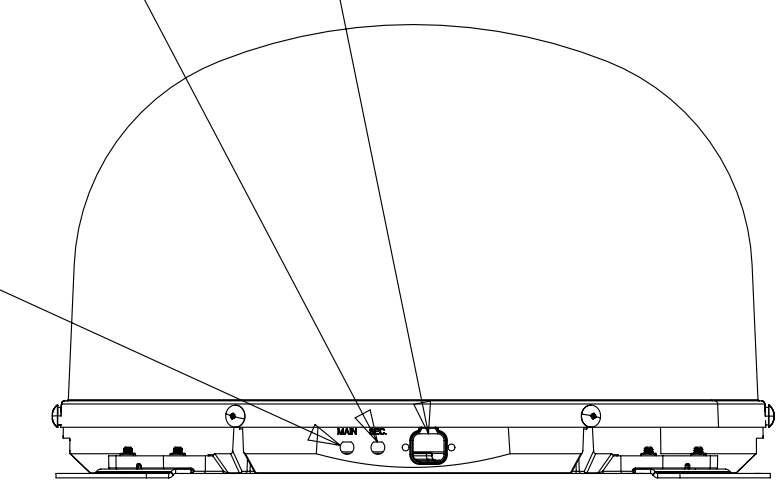
WHEN APPLYING ROOF
SEALANT TO SATELLITE
DISH, PLACE ROOF SEALANT HERE
(APPROXIMATELY 75MM WIDE)
AND PUSH THE CABLES INTO
THE SEALANT TO STABILIZE THEM.

CONNECT CABLE ASM-COAX FROM
ROOF ASM TO COAX CABLES ON
SATELLITE DISH AND CONNECT
10' CABLE-DATA FROM ROOF ASM
TO DATA CABLE FROM SATELLITE DISH
AND PLACE ALL CONNECTIONS BACK
INTO ROOF ASM.

CONNECT 2-PIN HOUSING
FROM ROOF ASM TO
SATELLITE DISH HERE
AND ADD CONVOLUTED TUBING

CONNECT CABLE ASM COAX
(ORG-2) FROM ROOF ASM
TO SEC INPUT ON SATELLITE DISH

CONNECT CABLE ASM COAX (ORG)
FROM ROOF ASM TO MAIN INPUT
ON SATELLITE DISH



VIEW GA-GA

- 783 SATELLITE HD TV SYSTEM AUTOC
- 282 SOLAR PANEL - 100 WATT
- 48P SAT TV SYSTEM IN-MOTION
- 25D STEREO SYSTEM/W/CD/DVD REAR
- 265 CODES/STANDARDS-CSA/CMVSS
- 1B1 CODES/STANDARDS USA

1B1 265

FIRST USED	14 R42GD	
DO NOT SCALE DRAWING		
TITLE: WIRING INSTL-BODY, 12V		
SHEET 7	PART NO 183550	REV

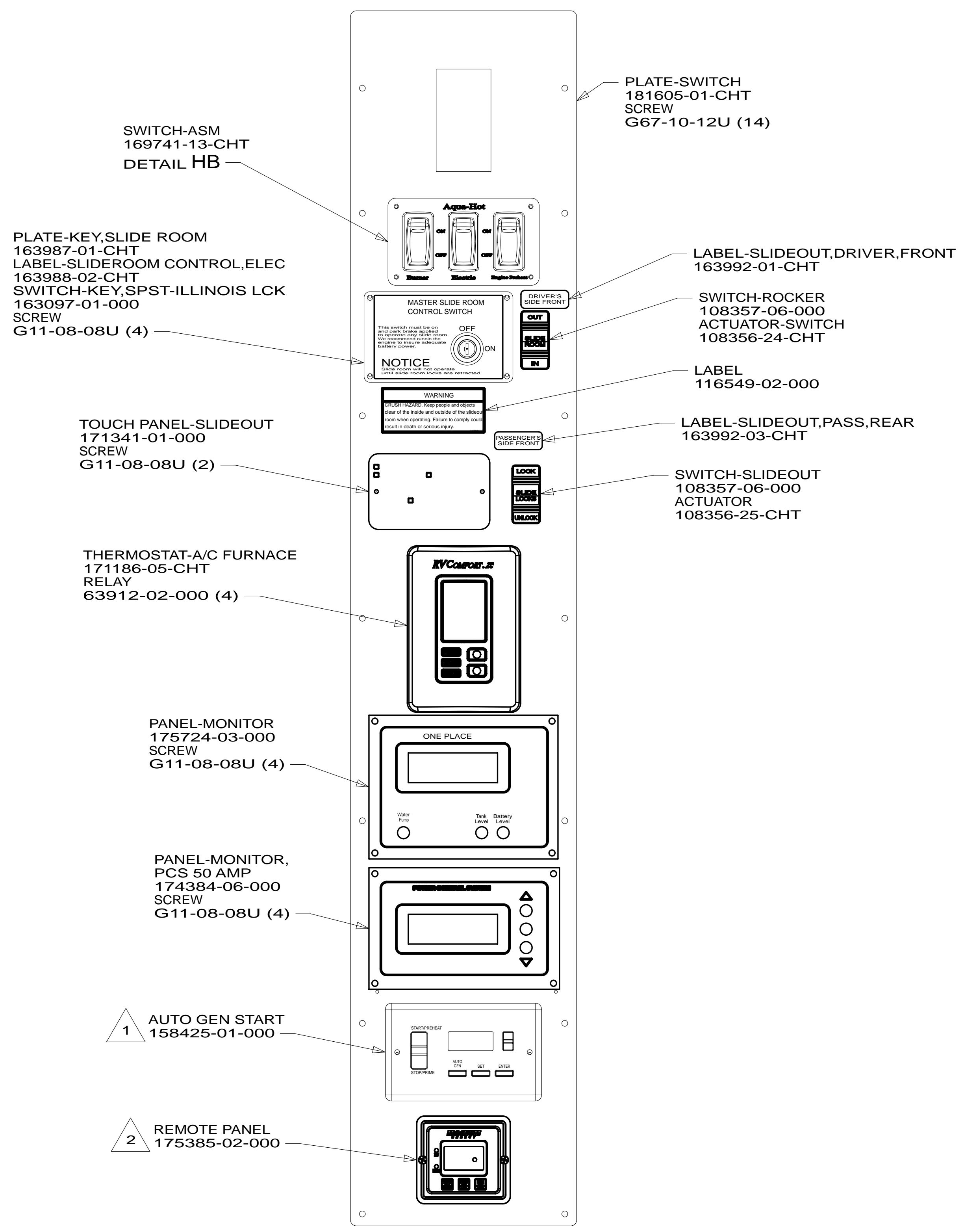
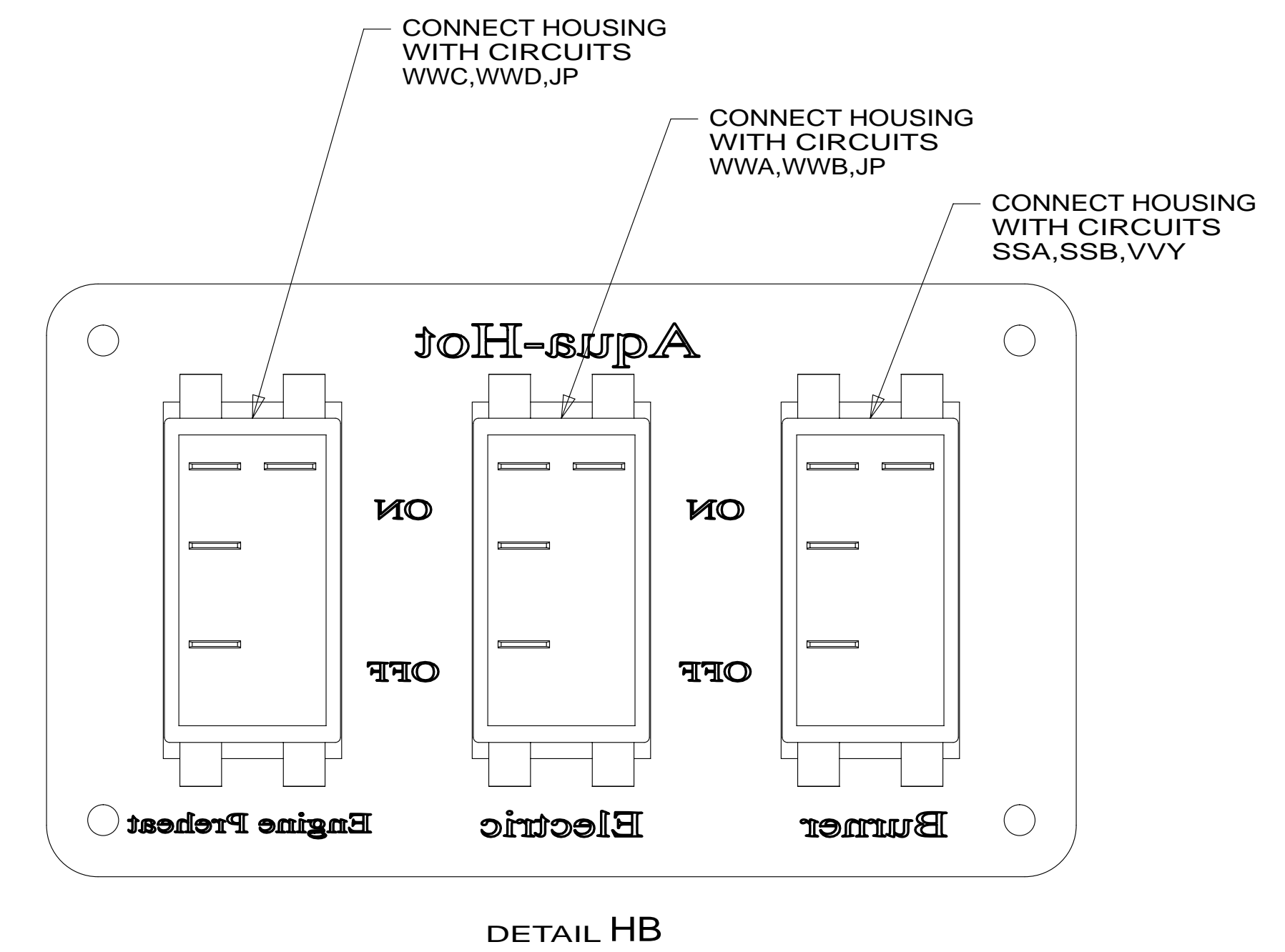
1 SEE MANUFACTURER'S INSTALLATION FOR
ADDITIONAL INFORMATION.

NOTES:

FOR ELECTRICAL
TORQUE
SPECIFICATIONS
SEE DWG NO.
128783-01-000

X-X
FOR
ELECTRICAL
CALLOUTS
SEE DWG NO.
121339-01-000

* 183550 * A



2 SET 'BAT TYPE' TO 'AGM2'
SET 'LBCO' TO '11VDC'
SEE OWNER'S MANUAL FOR SETUP PROCEDURE

1 SET 'GEN TYPE' TO MATCH GENERATOR MODEL INSTALLED IN COACH.
SET 'SAFETY TYPE' TO 'IGNITION'.
SEE OWNER'S MANUAL FOR SETUP PROCEDURE.

FOR ELECTRICAL TORQUE SPECIFICATIONS SEE DWG NO. 128783-01-000

X-X FOR ELECTRICAL CALLOUTS SEE DWG NO. 121339-01-000

- 32W GENERATOR-START,AUTO SYSTEM
- 265 CODES/STANDARDS-CSA/CMVSS
- 1B1 CODES/STANDARDS USA

FIRST USED	14 R42GD	
TITLE:	DO NOT SCALE DRAWING	
	WIRING INSTL-BODY,12V	
SHEET 8	PART NO 183550	REV

* 183550 *