



**DANGER**

**Danger of electrical shock, burns or death.** Always remove all power sources before attempting any repair, service or diagnostic work. Power can be present from shore power, generator, inverter or battery. All power sources must be disabled and secured before performing any service.

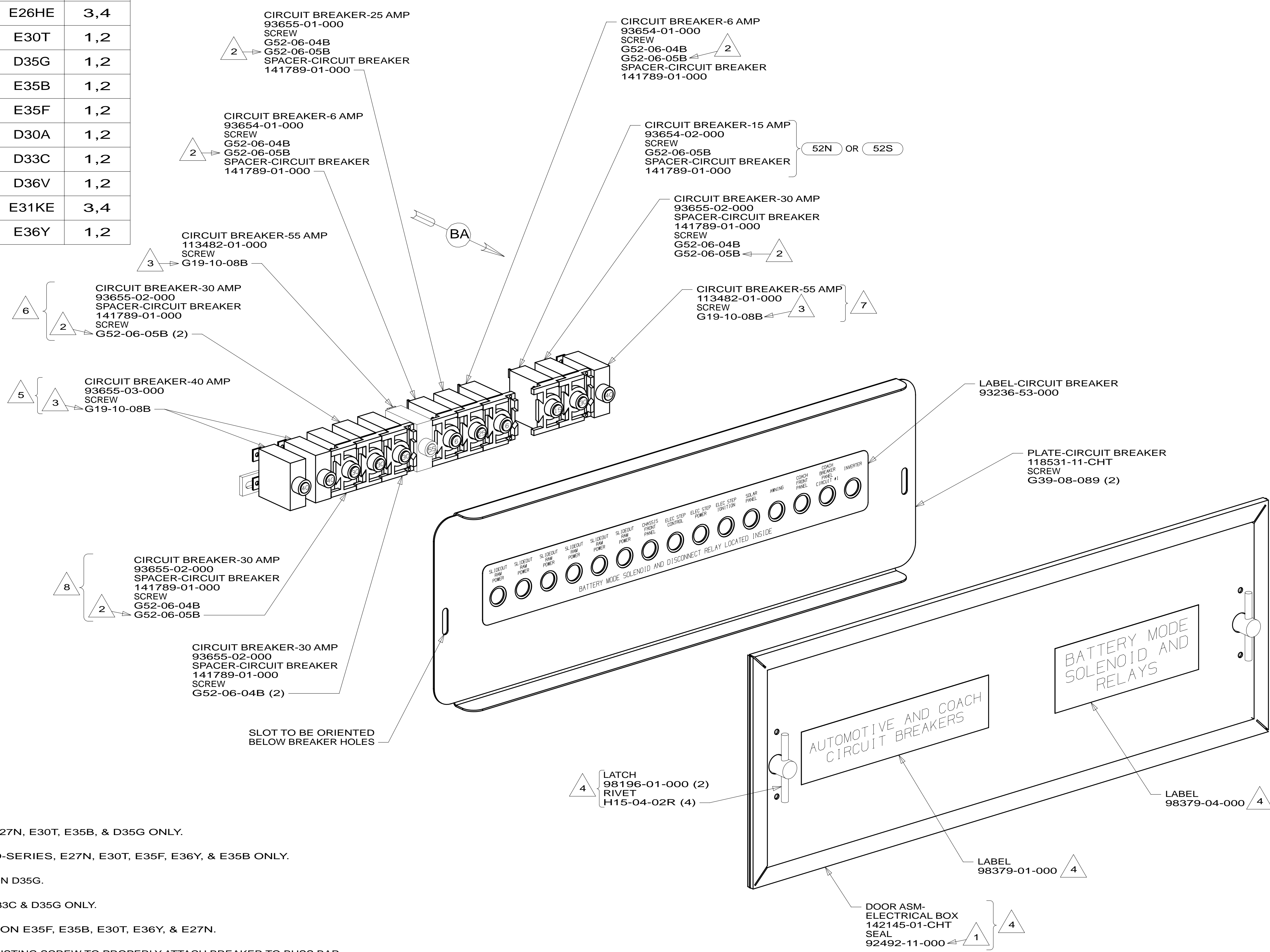


**CAUTION**

If you lack the skills, tools or equipment to perform diagnostic or repair work leave such work to an authorized Winnebago Industries dealer or other qualified shop.

DRAWING NO.	MODEL	SHEET
183488-01	E27N	1,2
183488-02	E26HE	3,4
183488-03	E30T	1,2
183488-04	D35G	1,2
183488-05	E35B	1,2
183488-06	E35F	1,2
183488-07	D30A	1,2
183488-08	D33C	1,2
183488-09	D36V	1,2
183488-10	E31KE	3,4
183488-11	E36Y	1,2

RELEASE	REV/DATE	DWG NO	183488
REV ZONE	REVISION RECORD	DATE	DTR-ORIG



- 52S AWNING - 2ND PATIO, ELECTRIC
- 52N AWNING - PATIO, ELECTRIC
- 265 CODES/STANDARDS-CSA/CMVSS
- 1B1 CODES/STANDARDS USA

1B1 265



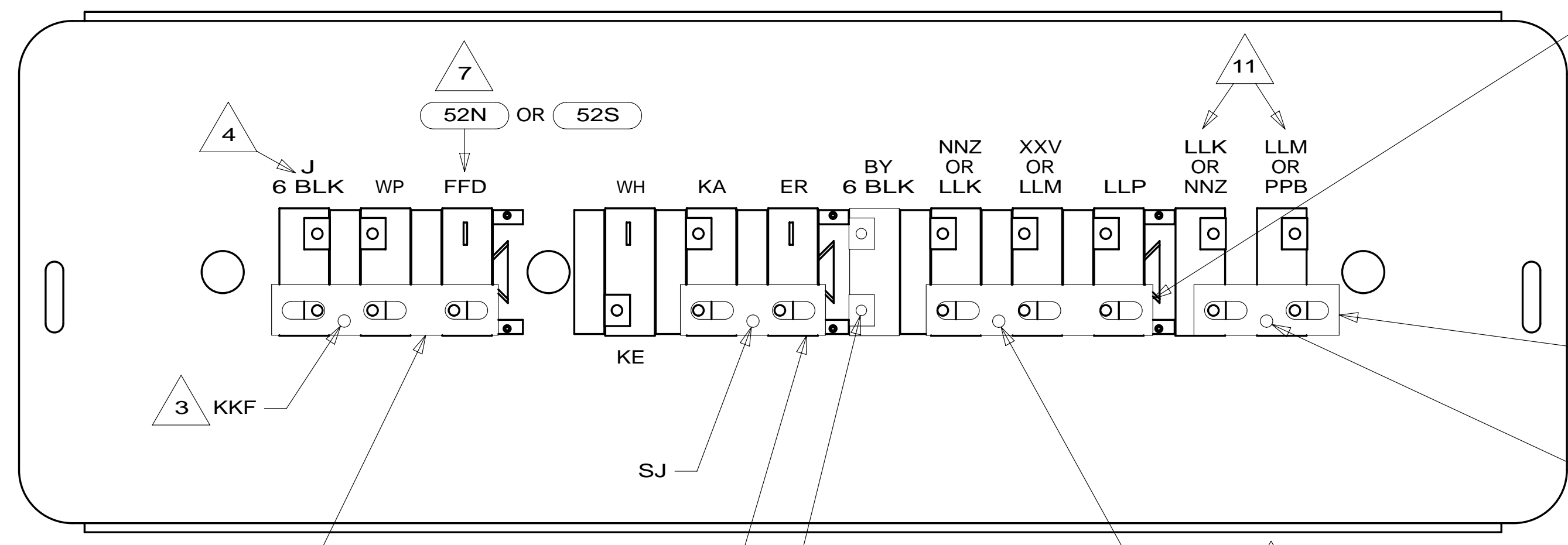
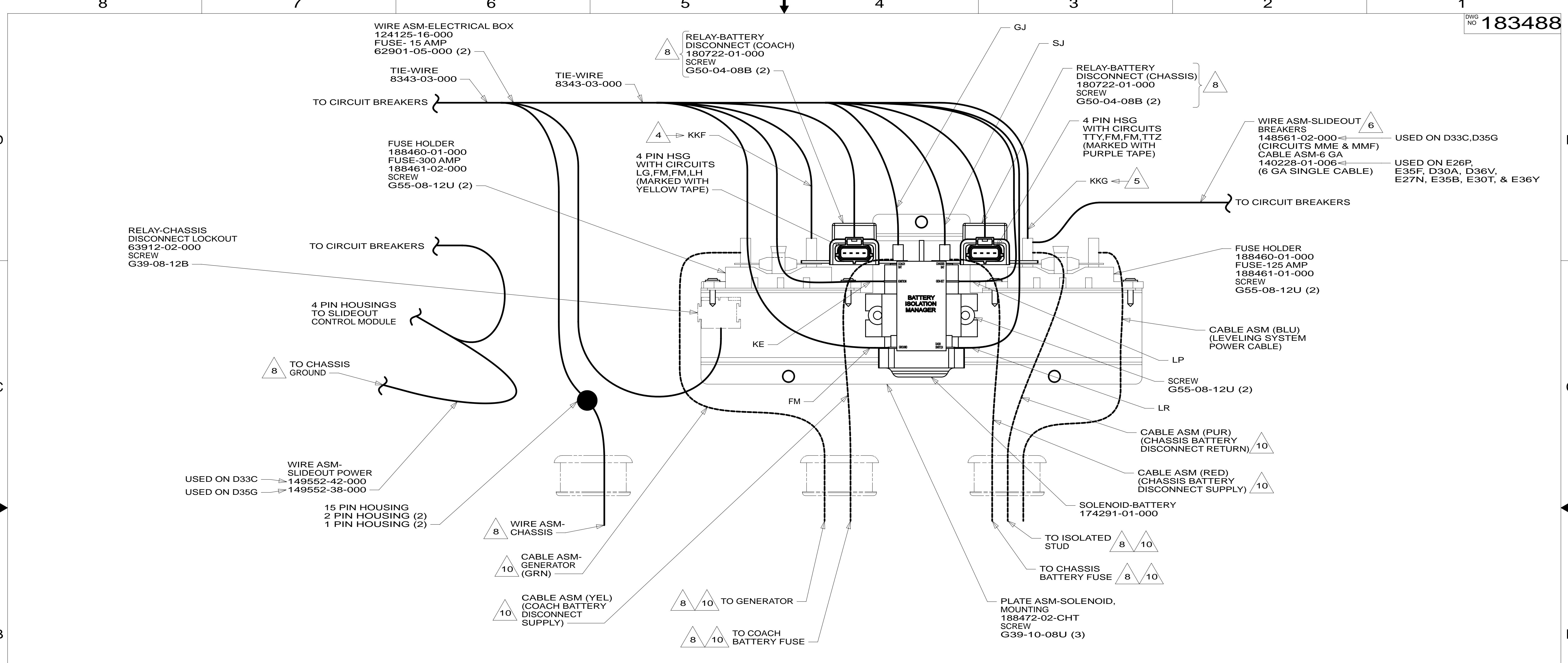
DTR	ORIG. DATE
CHKR	ALL DIMENSIONS ARE IN MILLIMETERS
P.E.	
M.E.	FIRST USED
DSNR	14 D&E-SER
UNSPECIFIED TOLERANCES ARE:	
WHOLE DIM (X)	: 3
ONE-PLACE (X.X)	: 1.5
TWO-PLACE (X.XX)	: 0.50
ANGLE	: 1°
THIRD ANGLE PROJECTION	
DO NOT SCALE DRAWING	REFER TO ES0018 FOR FASTENER TIGHTENING GUIDELINES
TITLE: CHASSIS ELECTRICAL BOX ASM	
SHEET 1 OF 4	PART NO 183488 REV

- NOTES:
- 8 USED ON E27N, E30T, E35B, & D35G ONLY.
  - 7 USED ON D-SERIES, E27N, E30T, E35F, E36Y, & E35B ONLY.
  - 6 NOT USED ON D35G.
  - 5 USED ON D33C & D35G ONLY.
  - 4 NOT USED ON E35F, E35B, E30T, E36Y, & E27N.
  - 3 REPLACE EXISTING SCREW TO PROPERLY ATTACH BREAKER TO BUSS BAR.
  - 2 USE THE LONGER SCREW TO PROPERLY ATTACH BREAKER TO BUSS BAR.
  - 1 PLACE AROUND ENTIRE PERIMETER OF DOOR WITH SEAM AT BOTTOM.

FOR ELECTRICAL TORQUE SPECIFICATIONS SEE DWG NO. 128783-01-000

FOR ELECTRICAL CALLOUTS SEE DWG NO. 121339-01-000

\* 183488 \*



- 11 FROM WIRE ASM-SLIDEOUT POWER ON D33C & D35G ONLY.
- 10 SEE BATTERY INSTL FOR ADDITIONAL INFORMATION.
- 9 WITHOUT (52N) OR (52S)
- 8 SEE WIRING INSTL-CHASSIS FOR ADDITIONAL INFORMATION.
- 7 IF CIRCUIT NOT USED, TAPE BACK TO HARNESS.
- 6 WIRE MARKED WITH RED TAPE.
- 5 WIRE MARKED WITH PURPLE TAPE.
- 4 WIRE MARKED WITH YELLOW TAPE.
- 3 WIRE MARKED WITH 2 WRAPS OF YELLOW TAPE.

2. SECURE CONDUIT 41953, TAB AS REQUIRED, OVER ALL WIRES IN CONTACT WITH SHARP EDGES.

1. LEGEND: — WINNEBAGO; - - - - - CABLE; - - - - - CHASSIS SUPPLIED WIRING.

NOTES:

- 11744-01-000 BUSS BAR USED ON E35F, D30A, D33C, & D36V
- 11744-02-000 BUSS BAR USED ON E35B, E27N, D35G, E30T, & E36Y
- 52S AWNING - 2ND PATIO, ELECTRIC
- 52N AWNING - PATIO, ELECTRIC
- 265 CODES/STANDARDS - CSA/CMVSS
- 1B1 CODES/STANDARDS - USA

FOR ELECTRICAL TORQUE SPECIFICATIONS SEE DWG NO. 128783-01-000

FOR ELECTRICAL CALLOUTS SEE DWG NO. 121339-01-000

- 52S AWNING - 2ND PATIO, ELECTRIC
- 52N AWNING - PATIO, ELECTRIC
- 265 CODES/STANDARDS - CSA/CMVSS
- 1B1 CODES/STANDARDS - USA

FIRST USED

## 14 D&E-SER

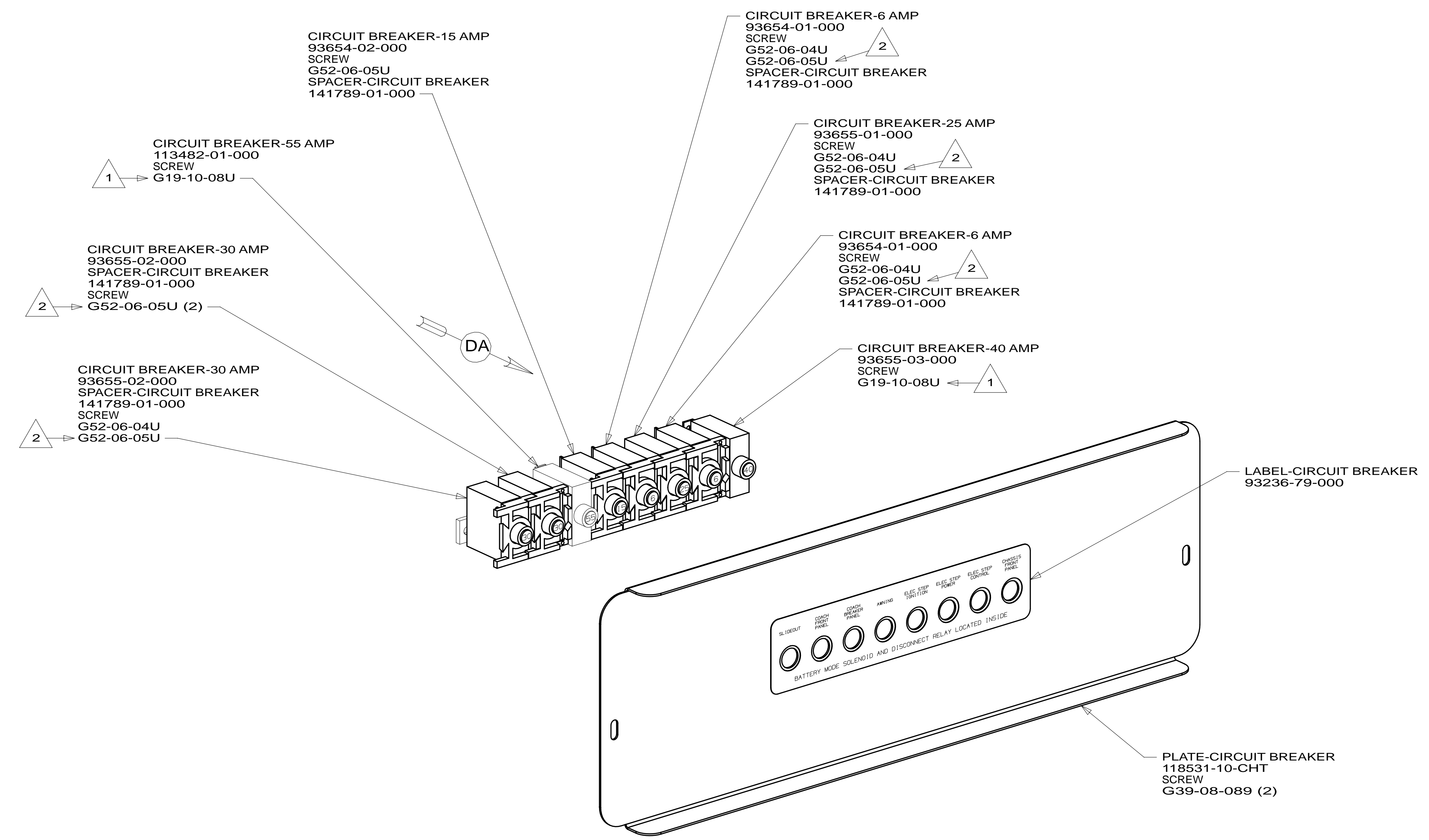
DO NOT SCALE DRAWING

TITLE: CHASSIS ELECTRICAL BOX ASM

SHEET 2 PART NO. 183488 REV

11-Apr-2014

\* 183488 \*



- 2 USE THE LONGER SCREW TO PROPERLY ATTACH BREAKER TO BUSS BAR.
- 1 REPLACE EXISTING SCREW TO PROPERLY ATTACH BREAKER TO BUSS BAR.

NOTES:

FOR ELECTRICAL TORQUE SPECIFICATIONS SEE DWG NO. 128783-01-000

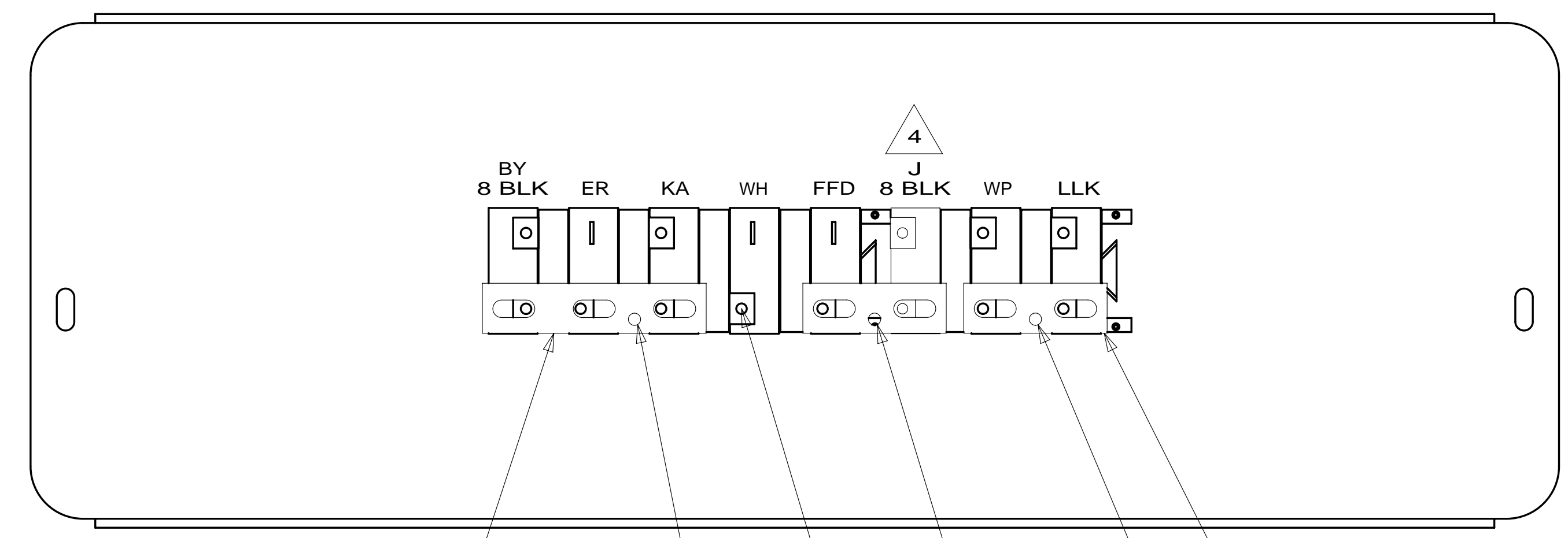
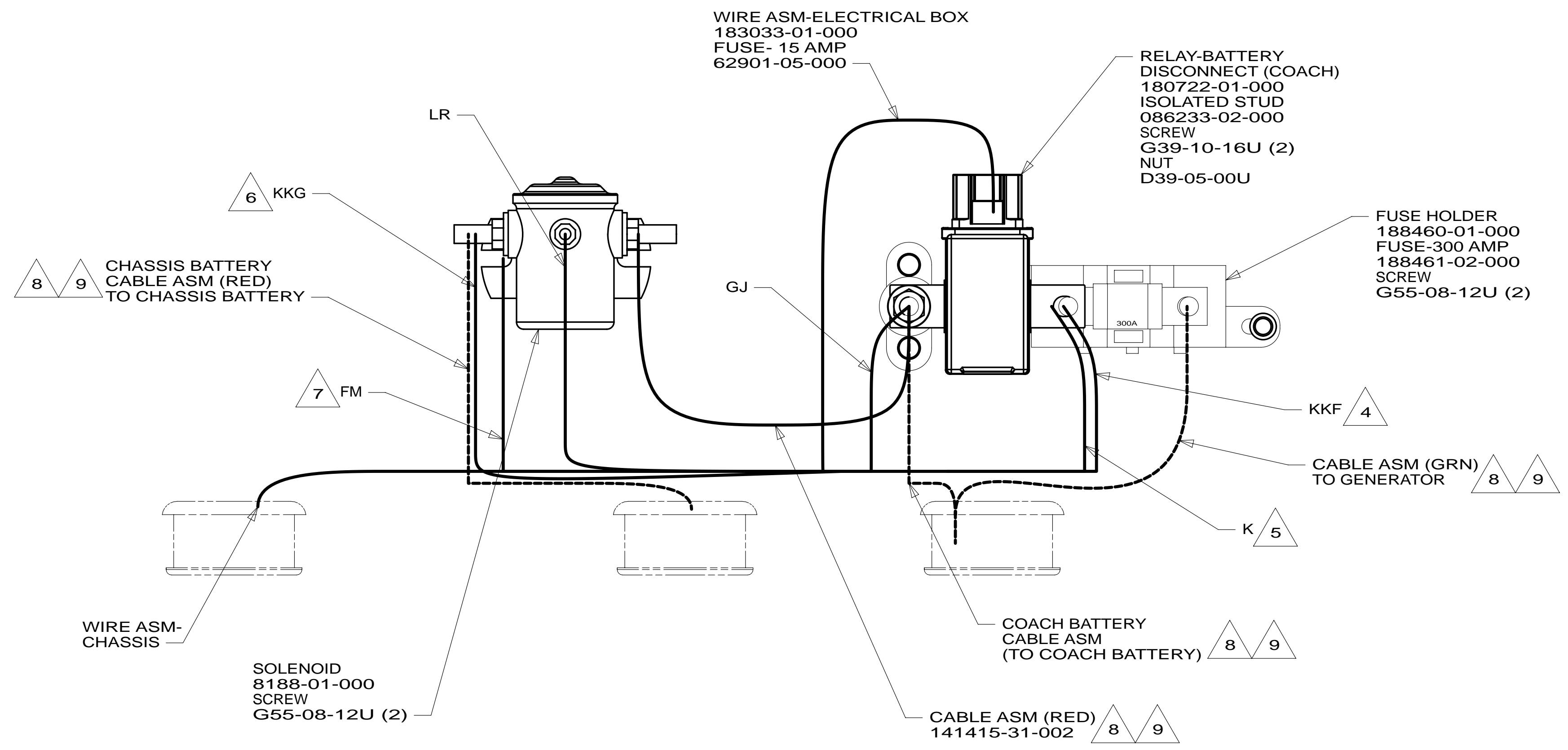
FOR ELECTRICAL CALLOUTS SEE DWG NO. 121339-01-000

- 265 CODES/STANDARDS - CSA/CMVSS
- 1B1 CODES/STANDARDS - USA

1B1 265

FIRST USED	
<b>14 D&amp;E-SER</b>	
DO NOT SCALE DRAWING	
TITLE: CHASSIS ELECTRICAL BOX ASM	
SHEET 3	PART NO 183488 REV

\* 183488 \* A



- 9 SEE BATTERY INSTL FOR ADDITIONAL INFORMATION.
- 8 SEE WIRING INSTL-CHASSIS FOR ADDITIONAL INFORMATION.
- 7 SECURE WITH SOLENOID MOUNTING SCREW.
- 6 WIRE MARKED WITH RED TAPE.
- 5 WIRE MARKED WITH PURPLE TAPE.
- 4 WIRE MARKED WITH YELLOW TAPE.
- 3 WIRE MARKED WITH 2 WRAPS OF YELLOW TAPE.

2. SECURE CONDUIT 41953, TAB AS REQUIRED, OVER ALL WIRES IN CONTACT WITH SHARP EDGES.

1. LEGEND: — WINNEBAGO; - - - - GABLE; - - - - CHASSIS SUPPLIED WIRING.

NOTES:

DETAIL DA

FOR ELECTRICAL TORQUE SPECIFICATIONS SEE DWG NO. 128783-01-000

FOR ELECTRICAL CALLOUTS SEE DWG NO. 121339-01-000

265 CODES/STANDARDS - CSA/CMVSS  
1B1 CODES/STANDARDS - USA

1B1 265

FIRST USED	
<b>14 D&amp;E-SER</b>	
DO NOT SCALE DRAWING	
TITLE: <b>CHASSIS ELECTRICAL BOX ASM</b>	
SHEET 4	PART NO <b>183488</b> REV

\* 183488 \* \* A