

- 9PA TAILGATE PACKAGE WITHOUT
- 9PC TAILGATE PACKAGE
- 21S WASHER/DRYER STACKED
- 1B1 CODES/STANDARDS USA
- 265 CODES/STDS-CSA,CMVSS
- 21M WASHER/DRYER PREP
- 214 DISHWASHER DRAWER STYLE
- 215 DISHWASHER WITHOUT

- 12. REQUIRES 5 GALLONS RV ANTIFREEZE 182955-01-000 PER TOILET. FOLLOW TECMA TOILET WINTERIZATION PROCEDURE.
- 11. GLUE FITTING AFTER CABINET IS INSTALLED.
- 10. APPLY PRIMER 126427-02-000 AND CEMENT 126427-01-000 BETWEEN ELBOW AND FLEX PIPE.
 - 9. SEE DRAWING 061607 FOR INSTALLATION OF GROMMETS.
 - 8. SECURE DRAINAGE PIPES TO CABINET USING WIRE TIE 108046-02-000, AND SCREW 000G67-10-12B AT INTERVALS OF NOT OF NOT MORE THAN 4 FEET APART.
 - 7. SECURE VENT PIPE TO GROMMET WITH CLAMP 062401-02-000.
 - 6. VENT PIPE MUST PROJECT 51 MIN AND 64 MAX ABOVE ROOF FOR PROPER FIT AND FUNCTION. ADD S-1 (116666-01-CHT SEAL-VENT PIPE) AROUND PIPE ON ROOF BEFORE VENT CAP IS INSTALLED.
 - 5. SEAL AROUND SHOWER WITH SILICONE.
 - 4. USE SMOOTH PLUMBERS PUTTY 167459-01-000 TO SEAL STRAINER (0.2 PER STRAINER).
 - 3. ALL PIPE AND FITTINGS TO BE ASSEMBLED WITH SOLVENT 004020-01-000 (USA), 004020-02-000 (CAN)
 - 2. SLOPE OF TRAP ARM MUST BE 6 PER 305 mm.
 - 1. SLOPE OF HORIZONTAL PIPING TO BE MINIMUM OF 3 PER 305 mm.

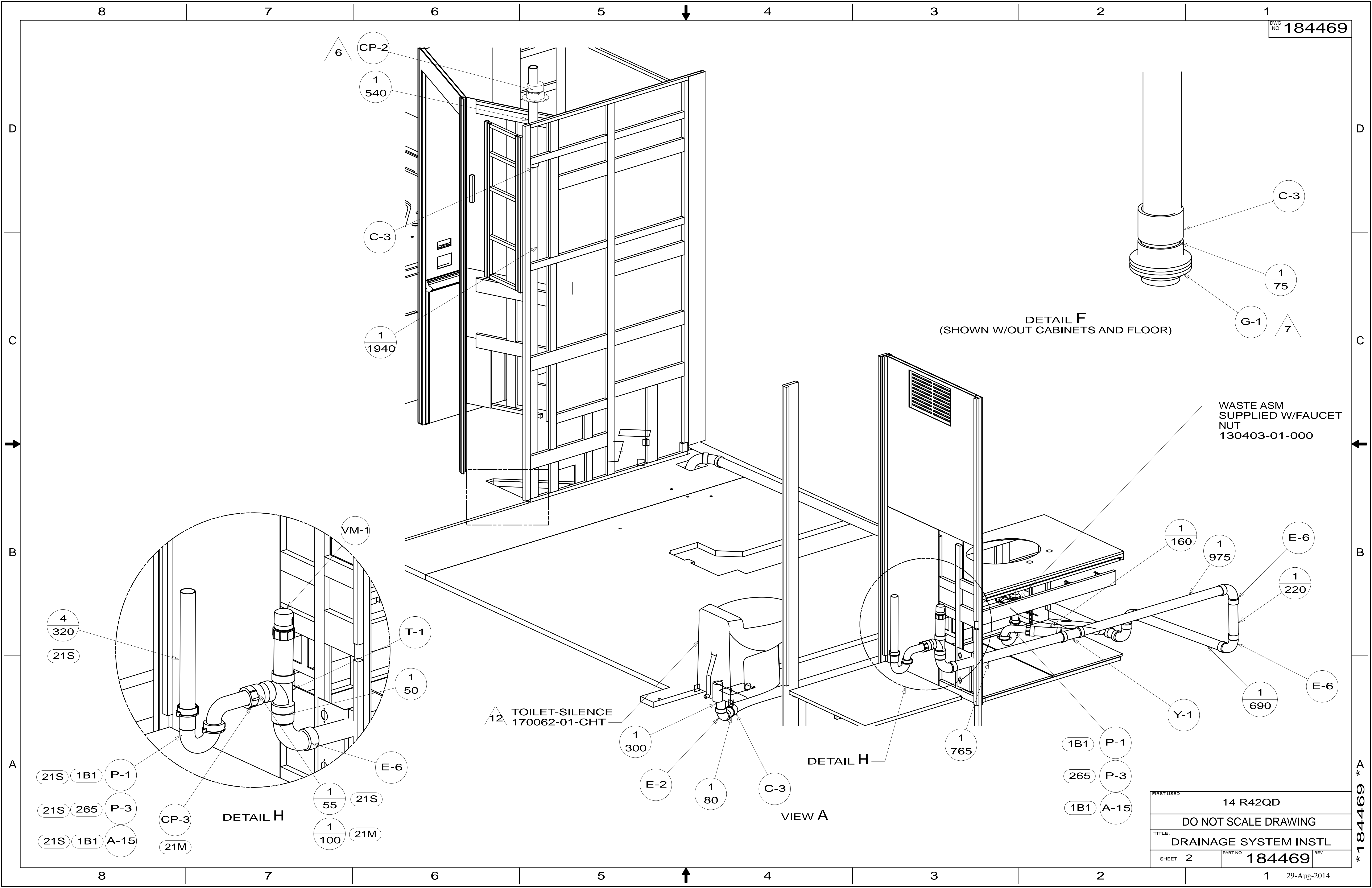
WINNEBAGO INDUSTRIES, INC. COPYRIGHT 2014

DFT-ORIG	ORIG. DATE
CHKR	ALL DIMENSIONS ARE IN MILLIMETERS
P.E.	
M.E.	FIRST USED
DSNR	14 R42QD
UNSPECIFIED TOLERANCES ARE:	
WHOLE DIM (X)	: 3
ONE-PLACE (X.X)	: 1.5
TWO-PLACE (X.XX)	: 0.50
ANGLE	: 1°
THIRD ANGLE PROJECTION	
DO NOT SCALE DRAWING	REFER TO ES0018 FOR FASTENER TIGHTENING GUIDELINES
TITLE: DRAINAGE SYSTEM INSTL	
SHEET 1 OF 4	PART NO 184469 REV
REF: 1	29-Aug-2014

FOR DRAINAGE CALLOUTS SEE DWG NO 116229-01-000

NOTES:

* 184469 * A



DETAIL F
(SHOWN W/OUT CABINETS AND FLOOR)

WASTE ASM
SUPPLIED W/FAUCET
NUT
130403-01-000

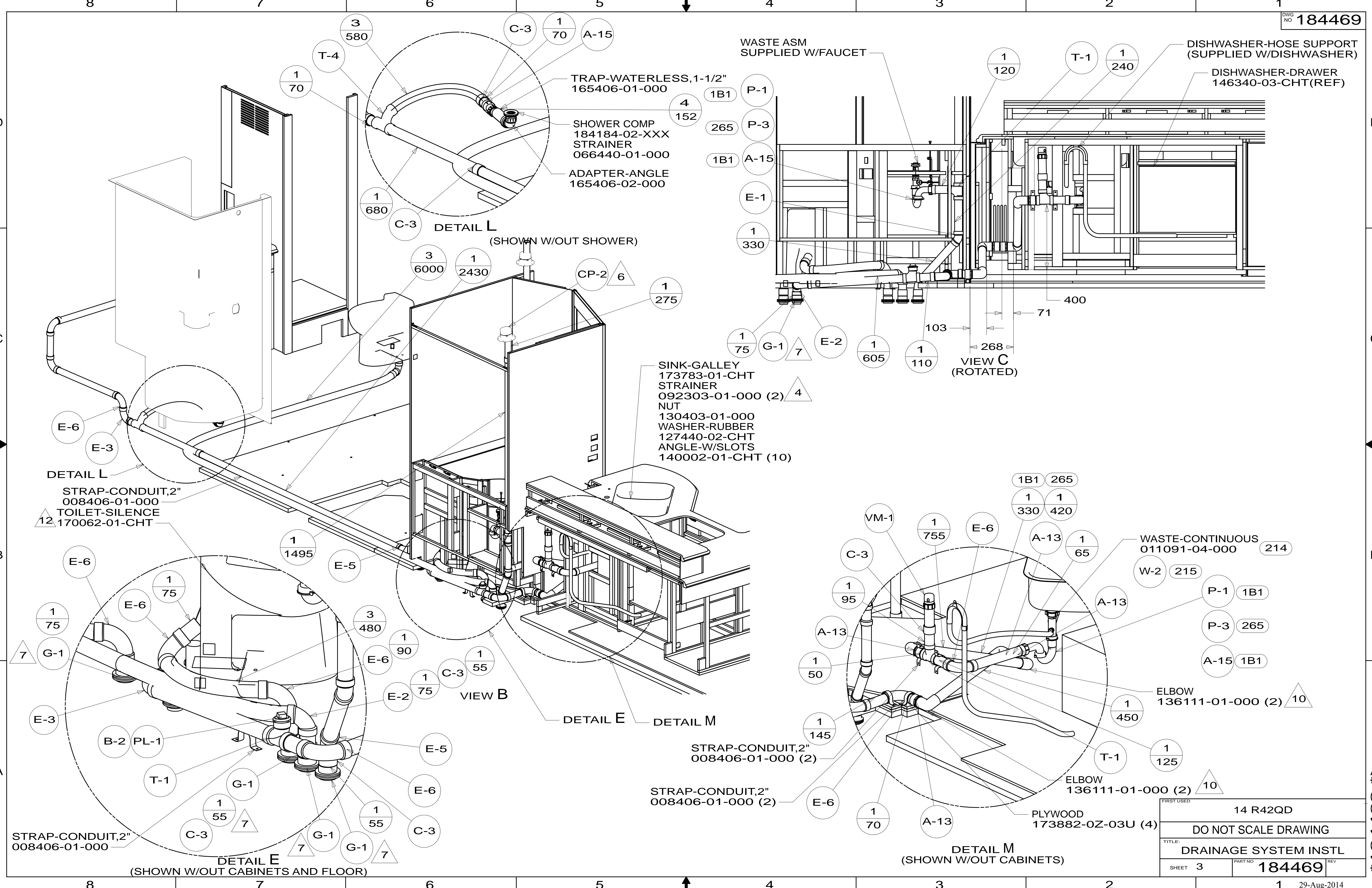
12 TOILET-SILENCE
170062-01-CHT

DETAIL H

VIEW A

FIRST USED	14 R42QD	
TITLE:	DO NOT SCALE DRAWING	
	DRAINAGE SYSTEM INSTL	
SHEET 2	PART NO 184469	REV
		29-Aug-2014

* 184469 * A



WASTE ASM
SUPPLIED W/FAUCET

DISHWASHER-HOSE SUPPORT
(SUPPLIED W/DISHWASHER)

DISHWASHER-DRAWER
146340-03-CHT(REF)

TRAP-WATERLESS, 1-1/2"
165406-01-000

SHOWER COMP
184184-02-XXX
STRAINER
066440-01-000

ADAPTER-ANGLE
165406-02-000

DETAIL L
(SHOWN W/OUT SHOWER)

SINK-GALLEY
173783-01-CHT
STRAINER
092303-01-000 (2)

NUT
130403-01-000
WASHER-RUBBER
127440-02-CHT
ANGLE-W/SLOTS
140002-01-CHT (10)

VIEW C
(ROTATED)

DETAIL L
STRAP-CONDUIT, 2"
008406-01-000
TOILET-SILENCE
12 170062-01-CHT

VIEW B

DETAIL E

STRAP-CONDUIT, 2"
008406-01-000 (2)

STRAP-CONDUIT, 2"
008406-01-000 (2)

DETAIL M
(SHOWN W/OUT CABINETS)

WASTE-CONTINUOUS
011091-04-000

W-2 215

P-1 1B1

P-3 265

A-15 1B1

ELBOW
136111-01-000 (2)

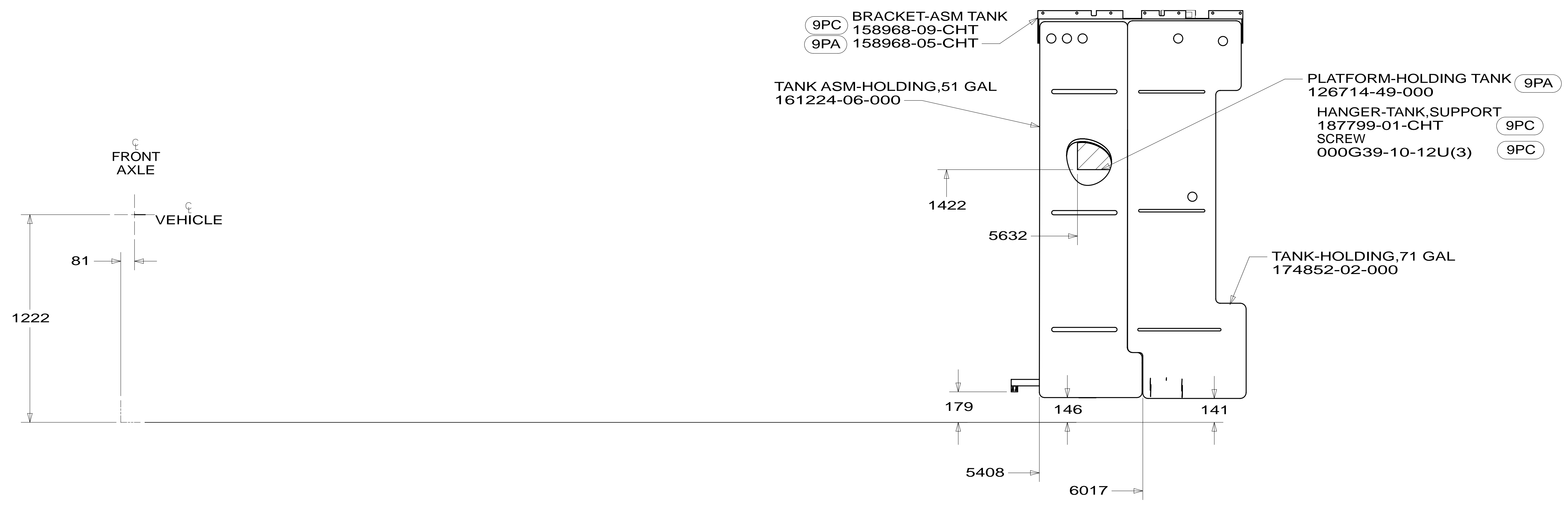
T-1 1/125

ELBOW
136111-01-000 (2)

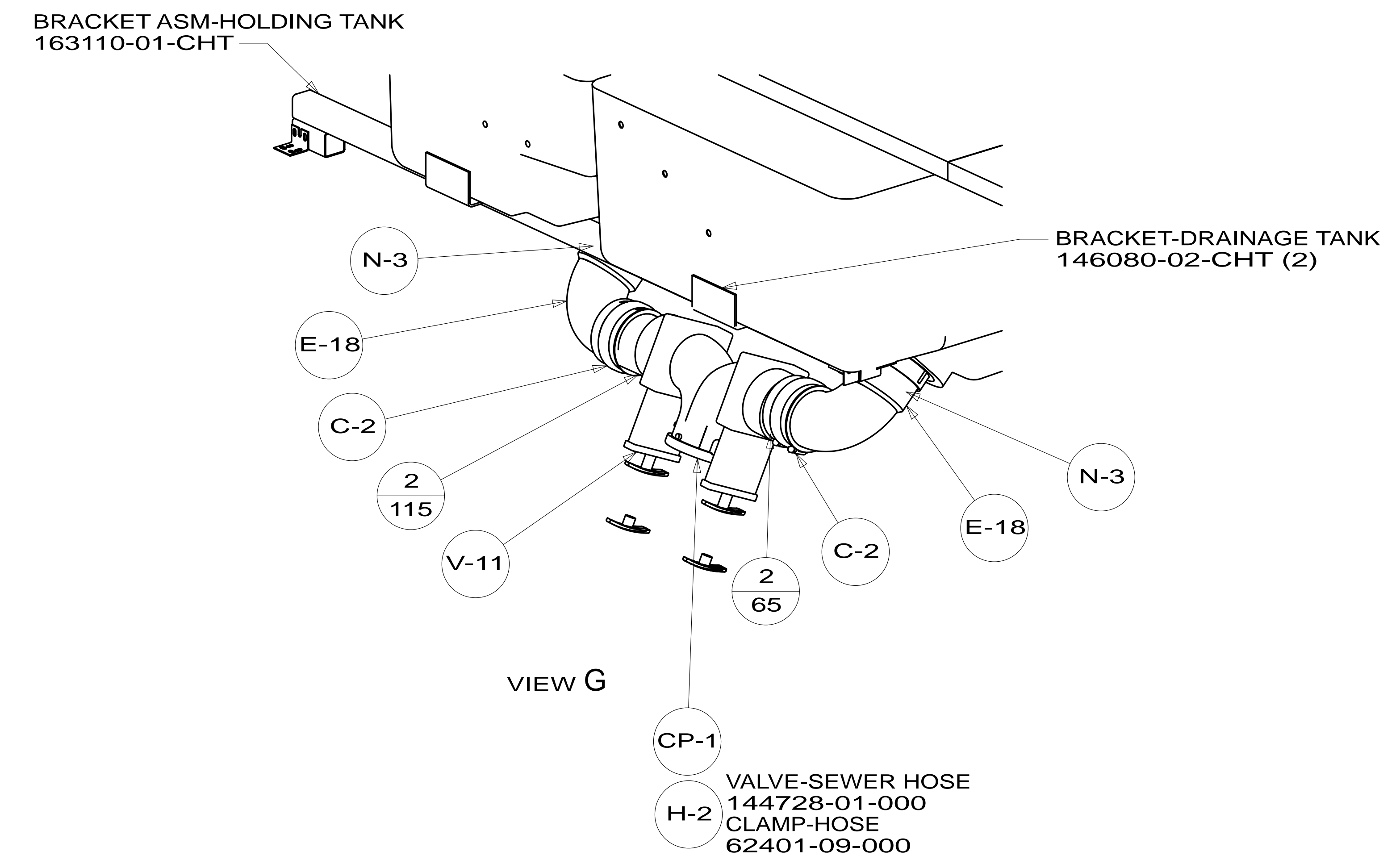
PLYWOOD
173882-0Z-03U (4)

FIRST USED	14 R42QD
DO NOT SCALE DRAWING	
TITLE: DRAINAGE SYSTEM INSTL	
SHEET 3	PART NO 184469 REV
29-Aug-2014	

* 184469 * A

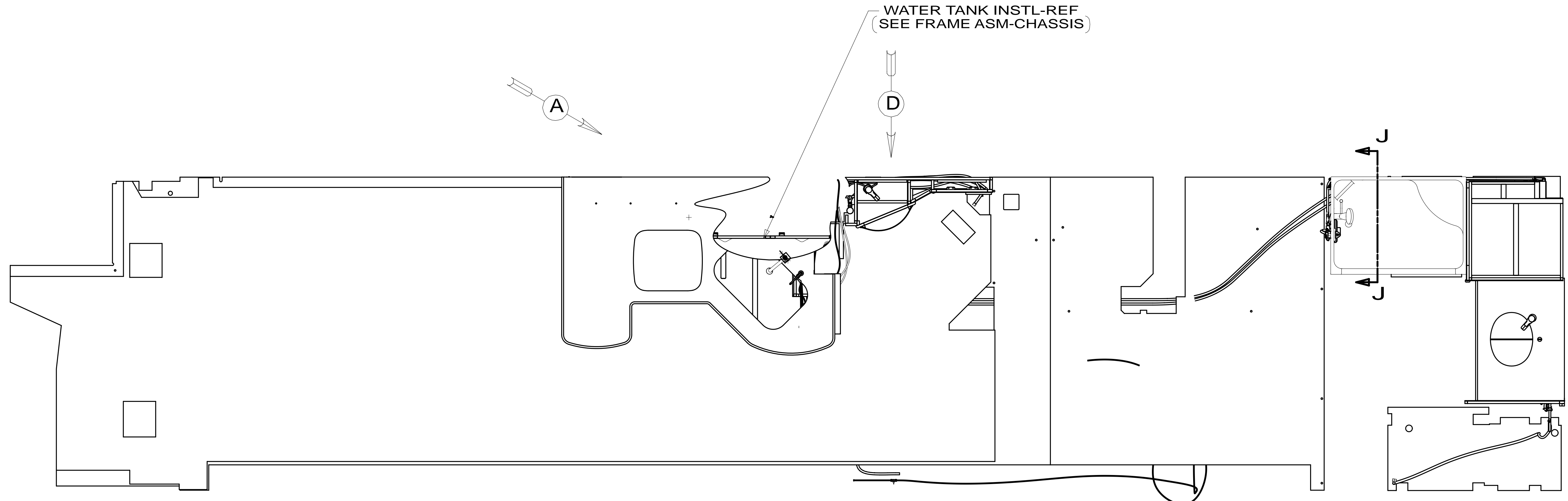


TOP VIEW SHOWING TANKS AND DRAINS



FIRST USED	14 R42QD	
DO NOT SCALE DRAWING		
TITLE: DRAINAGE SYSTEM INSTL		
SHEET 4	PART NO 184469	REV
		1 29-Aug-2014

* 184469 * A



- 13. FOR INSTALLATION USE SILICON-ADHESIVE 131264-05-CHT. APPLY ON TOP OF PLATE, PLACE COVER ON, AND PUT ADHESIVE AROUND COVER.
- 12. INSTALL FAUCET WITHOUT BASEPLATE.
- 11. REQUIRES 5 GALLONS OF 182955-01-000 ANTIFREEZE FOR WINTERIZATION.
- 10. VALVE MUST REMAIN OPEN AFTER WATER TEST.
- 9. FLUSHING SYSTEM REQUIRES 125697-06-000 INSTRUCTION SHEET.
- 8. ALL CRIMP FITTINGS TO PEX TUBING REQUIRE 1/2" CLAMP 140171-03-000.
- 7. ALL CRIMP FITTINGS TO PEX TUBING REQUIRE 5/8" CLAMP 140171-04-000.
- 6. LABEL HOT AND COLD SUPPLY TUBES AND TAPE FITTING TO TUBE BEFORE CABINET SET TO PREVENT MOVEMENT.
- 5. ADD PIPE WRAP (LADDER SCRAP 110157-02-000) INSULATION.
- 4. ADD TEFLON TAPE 010405-02-000.
- 3. ALL TUBING TO BE SECURED AT 1200 INTERVALS MAXIMUM WITH CLAMP 010495-01-000 AND SCREW 000G67-10-12U OR EQUIVALENT.
- 2. TUBING TO BE INSTALLED WITH SUFFICIENT SLOPE TO PROVIDE DRAINAGE TO NEAREST VALVE.
- 1. PLASTIC FITTINGS TO BE SEALED WITH SEALANT 084456-01-000.

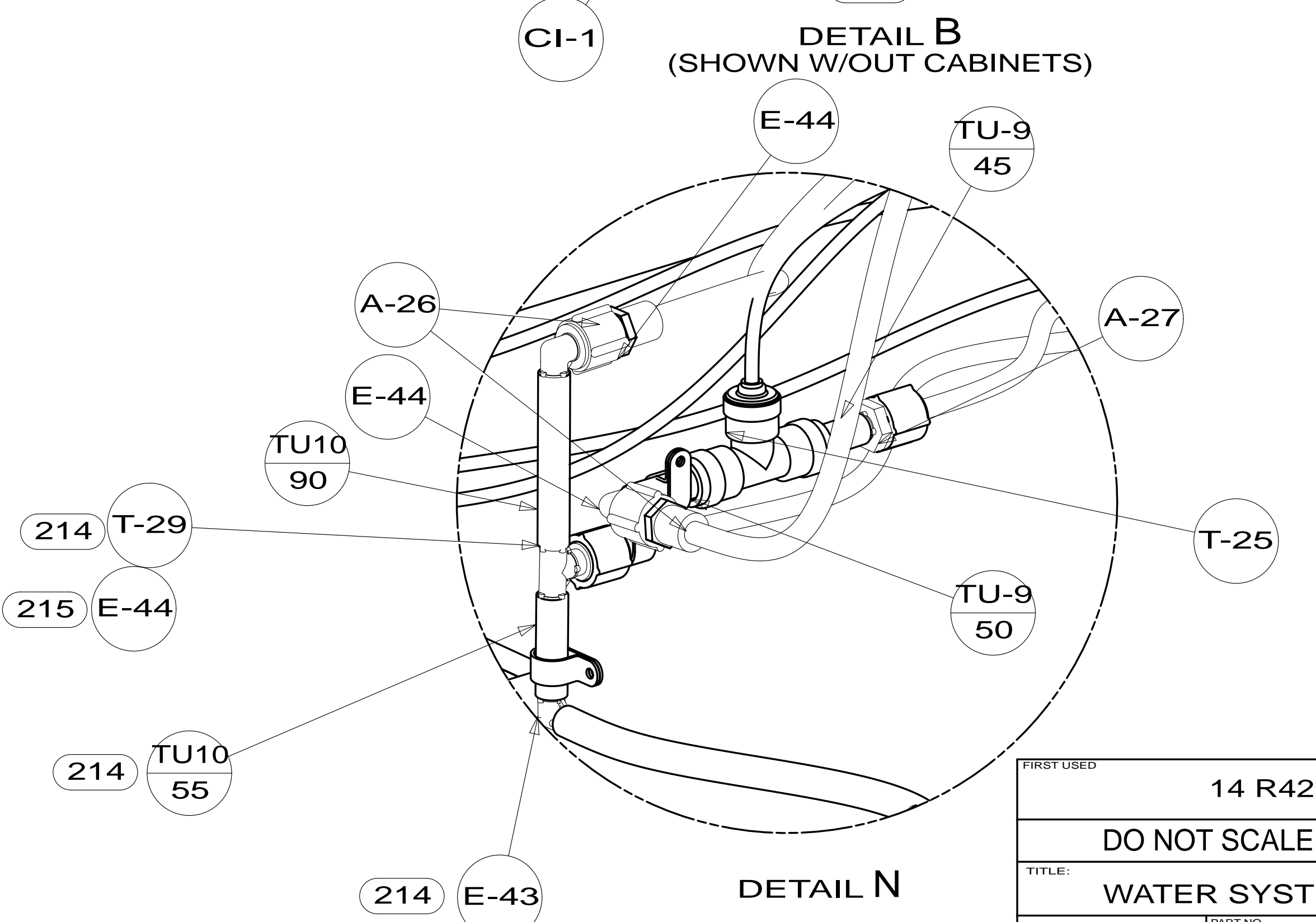
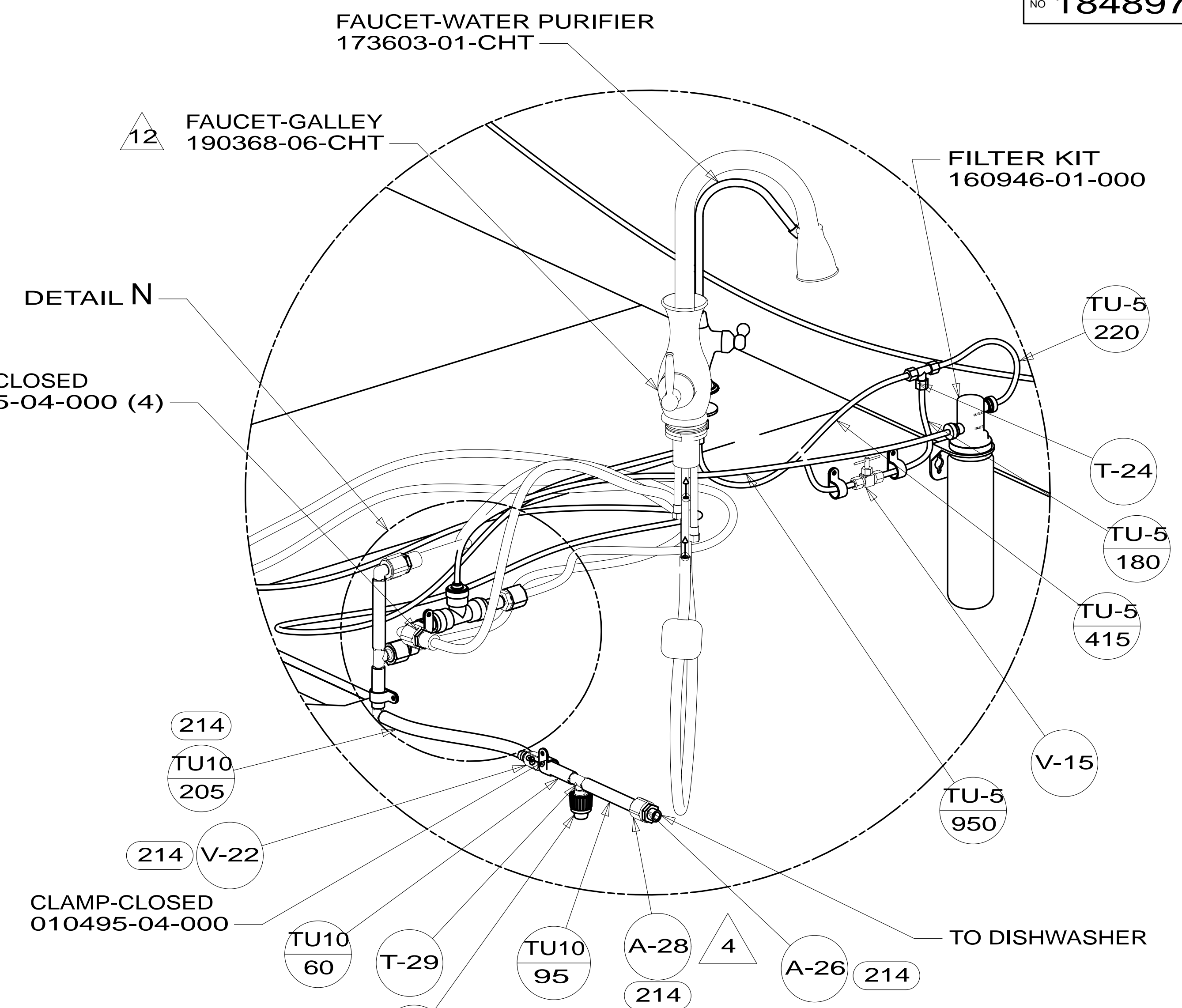
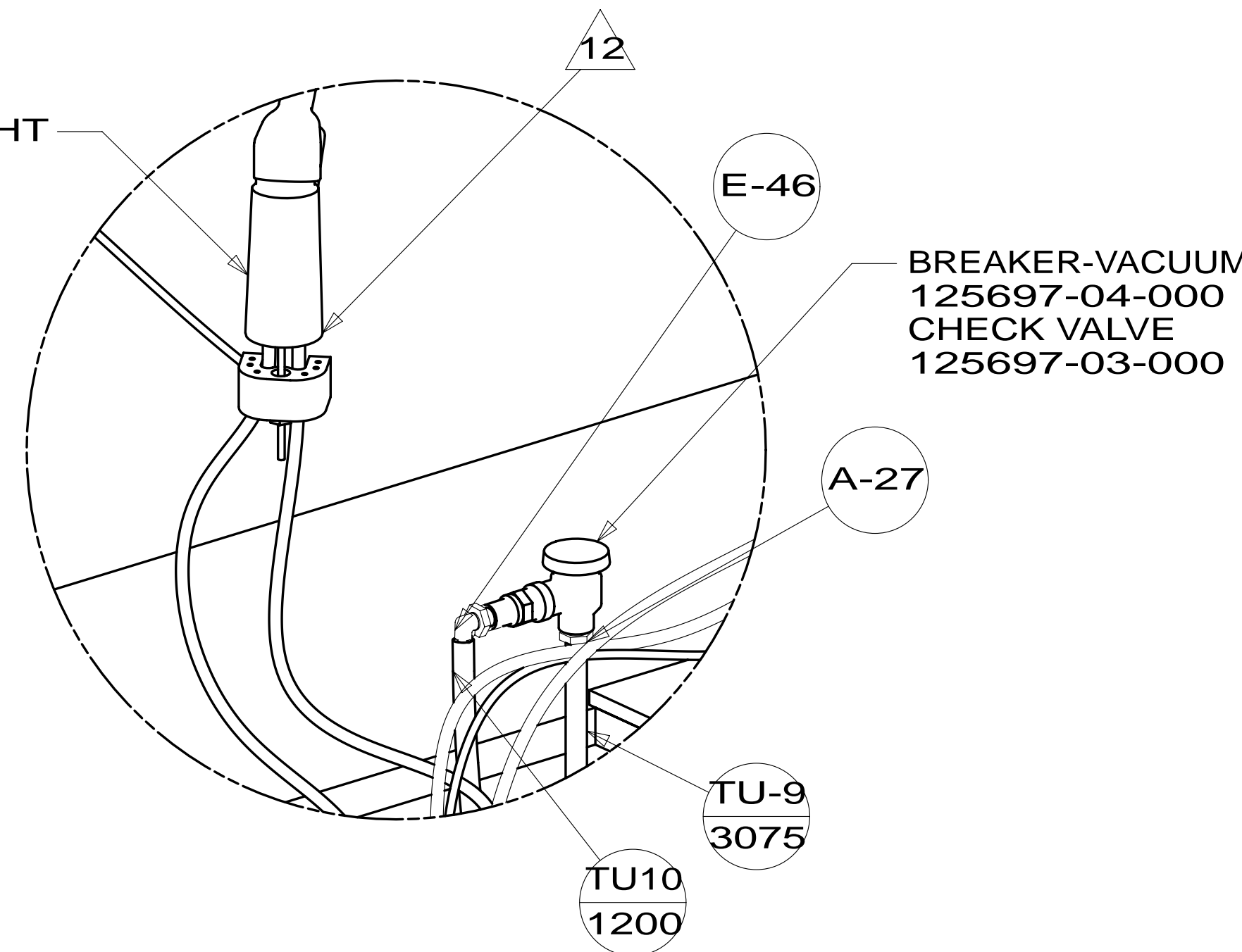
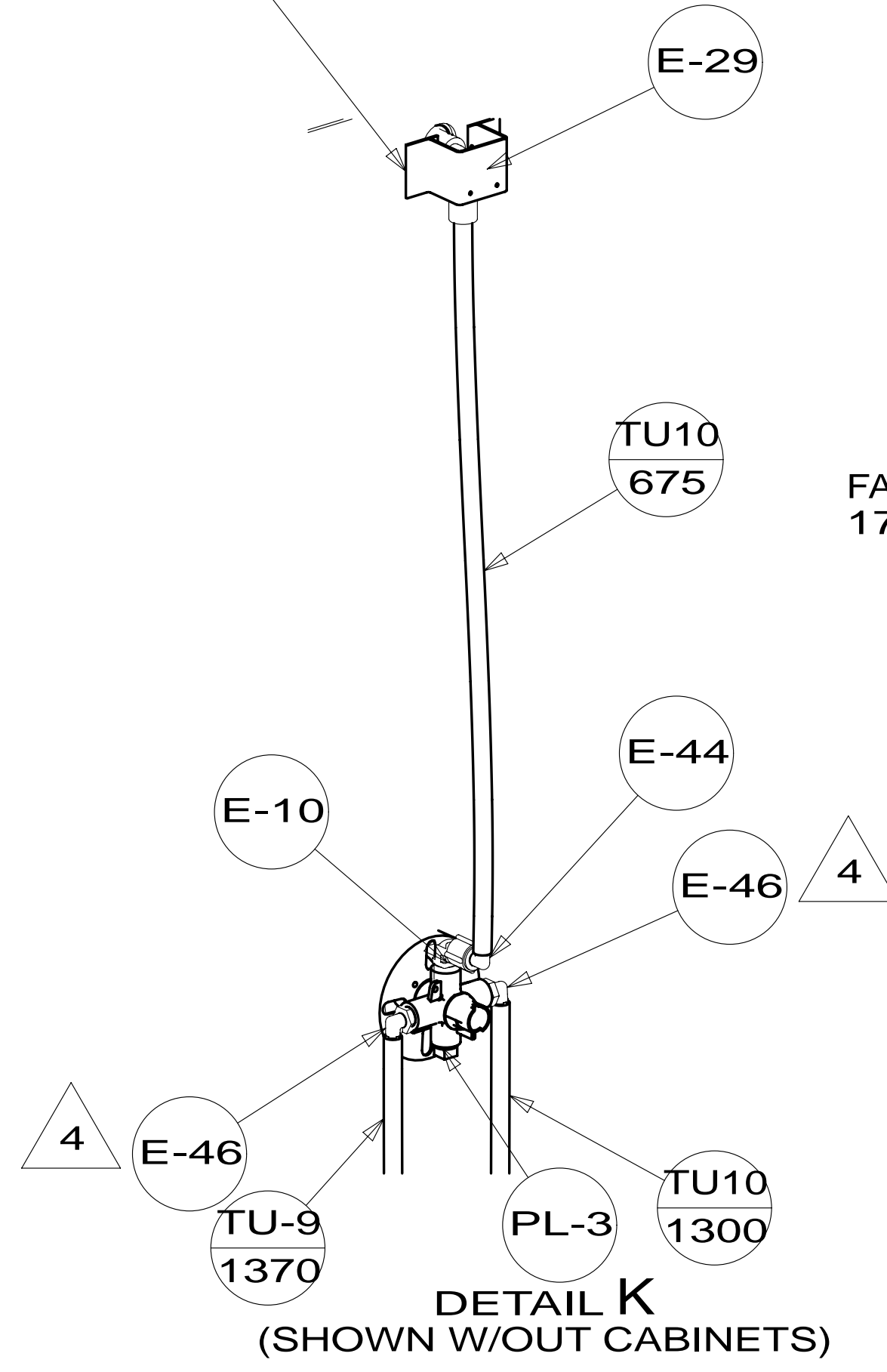
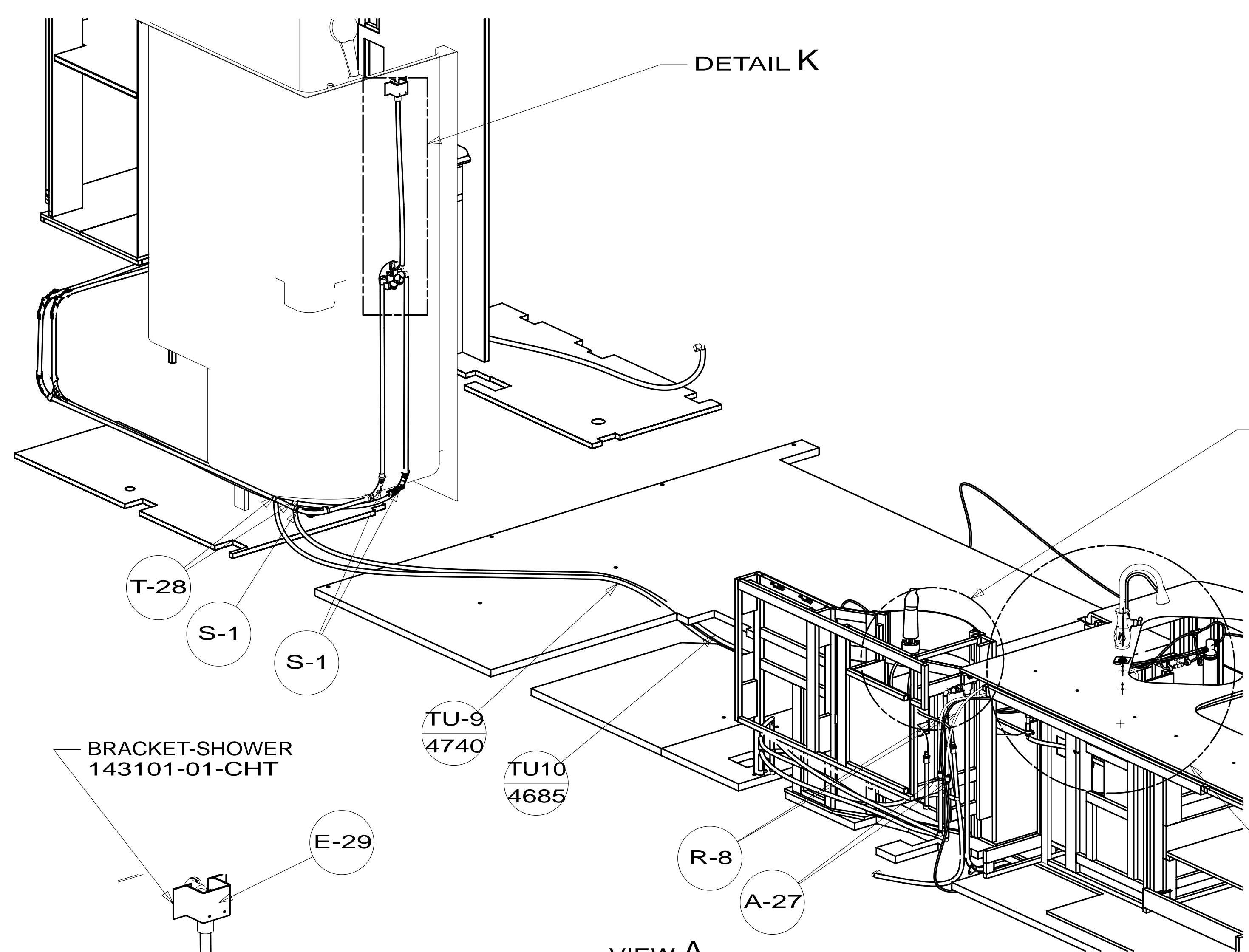
- 9PC TAILGATE PACKAGE
- 21S WASHER & DRYER-PAIR
- 21M WASHER/DRYER PREP
- 214 DISHWASHER-DRAWER STYLE
- 215 DISHWASHER WITHOUT
- 505 HOSE REEL-WATER,POWERED

FOR WATER CALLOUTS SEE DWG NO 116230-01-000

WINNEBAGO		COPYRIGHT 2014 WINNEBAGO INDUSTRIES, INC.	
DTR	ORIG. DATE	ALL DIMENSIONS ARE IN MILLIMETERS	
CHKR			
P.E.			
M.E.	FIRST USED	14 R42QD	
DSNR			
UNSPECIFIED TOLERANCES ARE:		MATERIAL:	
WHOLE DIM (X)	: 3		
ONE-PLACE (X.X)	: 1.5		
TWO-PLACE (X.XX)	: 0.50		
ANGLE	: 1°		
THIRD ANGLE PROJECTION			
DO NOT SCALE DRAWING		REFER TO ES0018 FOR FASTENER TIGHTENING GUIDELINES	
TITLE: WATER SYSTEM INSTL			
SHEET 1 OF 4	PART NO	184897	REV
REF:	1	04-Aug-2014	

NOTES:

* 184897 * A



FIRST USED	14 R42QD	
TITLE:	DO NOT SCALE DRAWING	
SHEET	2	REV
PART NO	184897	REV
04-Aug-2014		

*184897 *A

BRACKET-SHOWER HEAD
143218-03-CHT
DROP ELL
135028-02-CHT
PLATE-COVER
189861-01-XXX

SHOWER-HAND HELD
187372-01-CHT

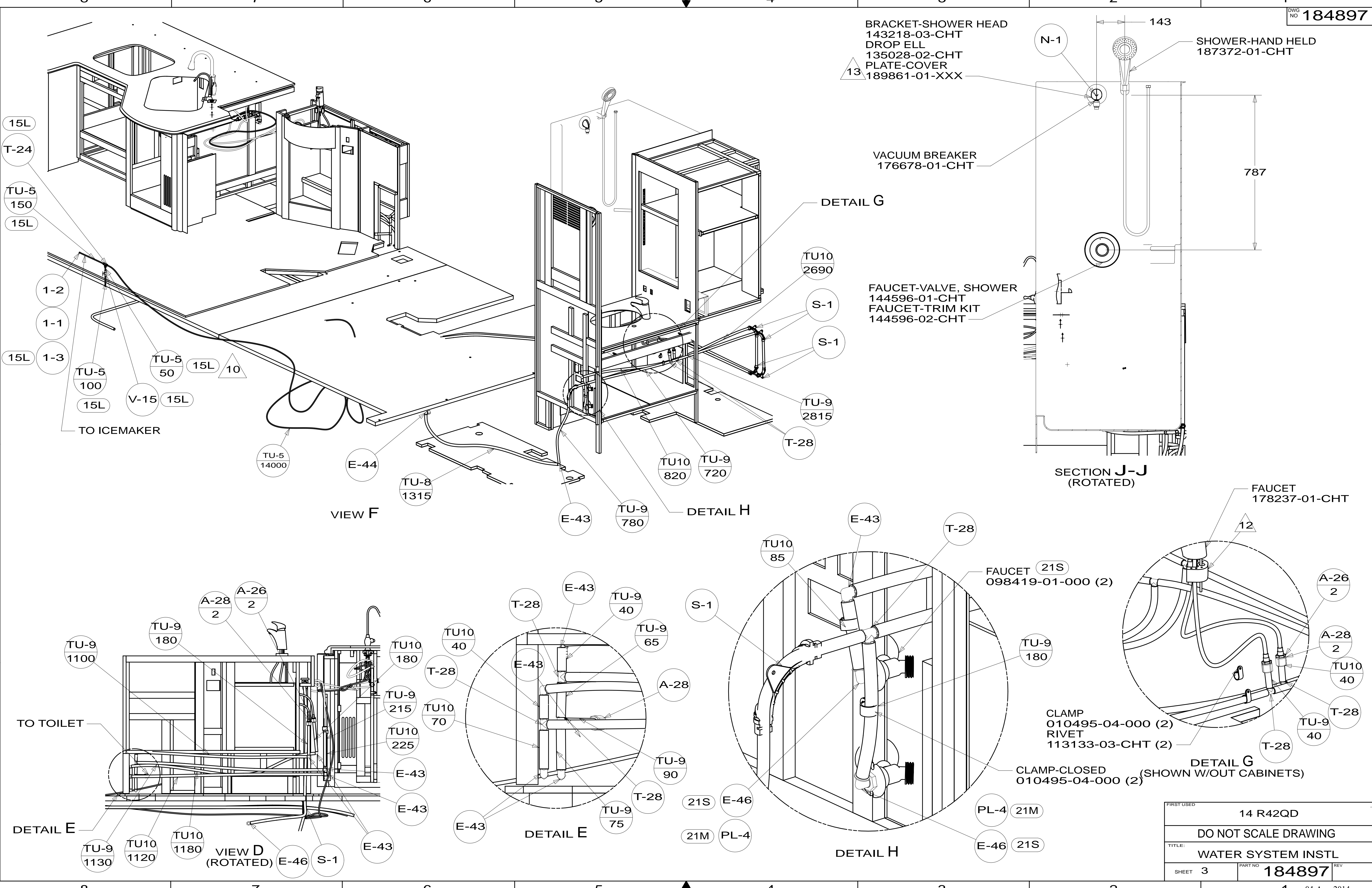
VACUUM BREAKER
176678-01-CHT

FAUCET-VALVE, SHOWER
144596-01-CHT
FAUCET-TRIM KIT
144596-02-CHT

SECTION J-J
(ROTATED)

787

143



VIEW F

DETAIL H

SECTION J-J
(ROTATED)

TO TOILET

TU-9
1100

TU-9
180

A-28
2

A-26
2

TU-10
180

TU-9
215

TU-10
225

TU-9
215

TU-10
70

TU-10
40

T-28

E-43

TU-9
40

TU-9
65

A-28

TU-9
90

T-28

TU-9
75

E-43

21S

21M

E-46

PL-4

FAUCET 21S
098419-01-000 (2)

TU-9
180

CLAMP
010495-04-000 (2)
RIVET
113133-03-CHT (2)

CLAMP-CLOSED
010495-04-000 (2)

PL-4 21M

E-46 21S

FAUCET
178237-01-CHT

12

A-26
2

A-28
2

TU-10
40

T-28

TU-9
40

DETAIL G
(SHOWN W/OUT CABINETS)

VIEW D
(ROTATED)

E-46

S-1

TU-9
1130

TU-10
1120

TU-10
1180

8

7

6

5

4

3

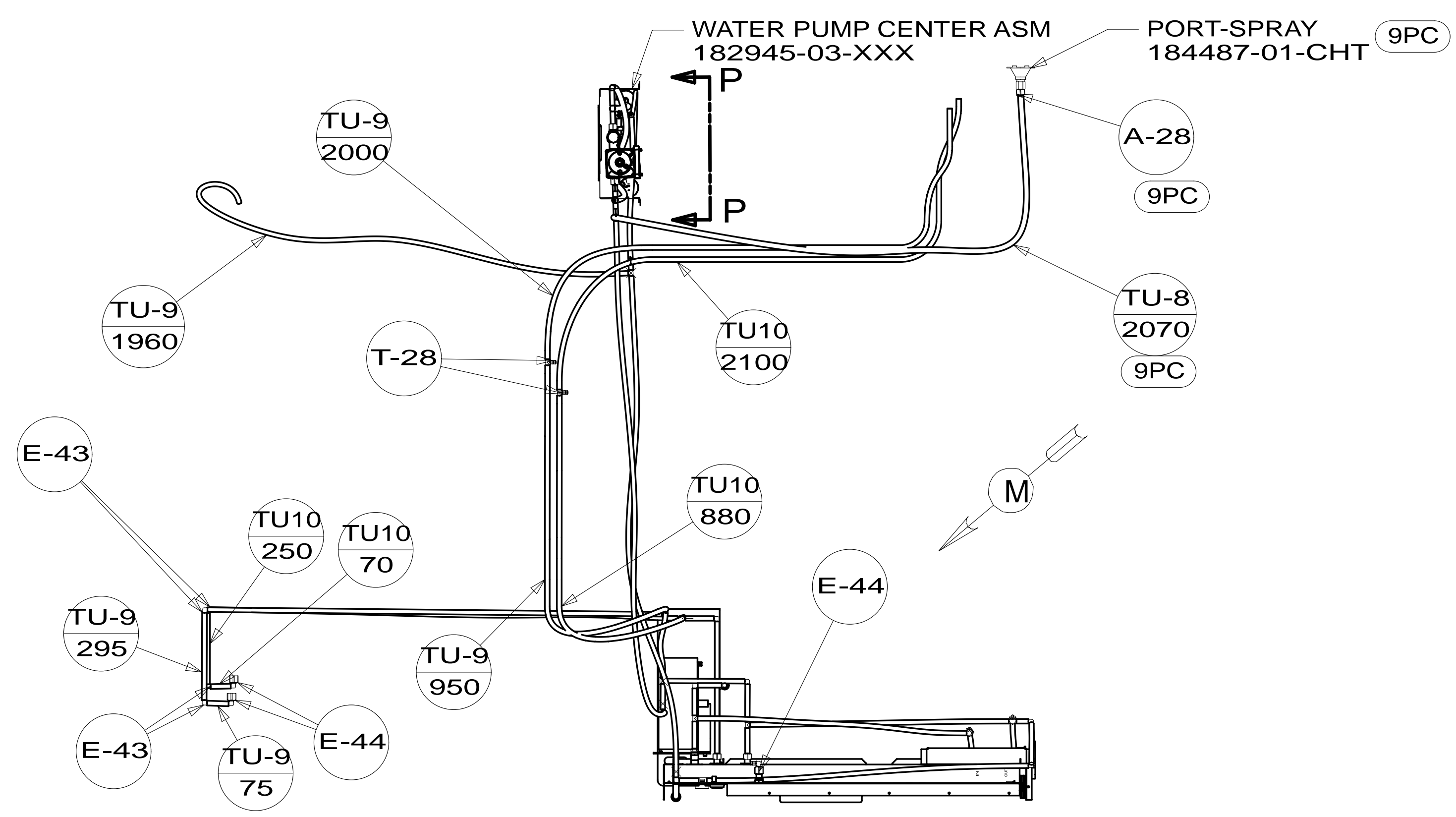
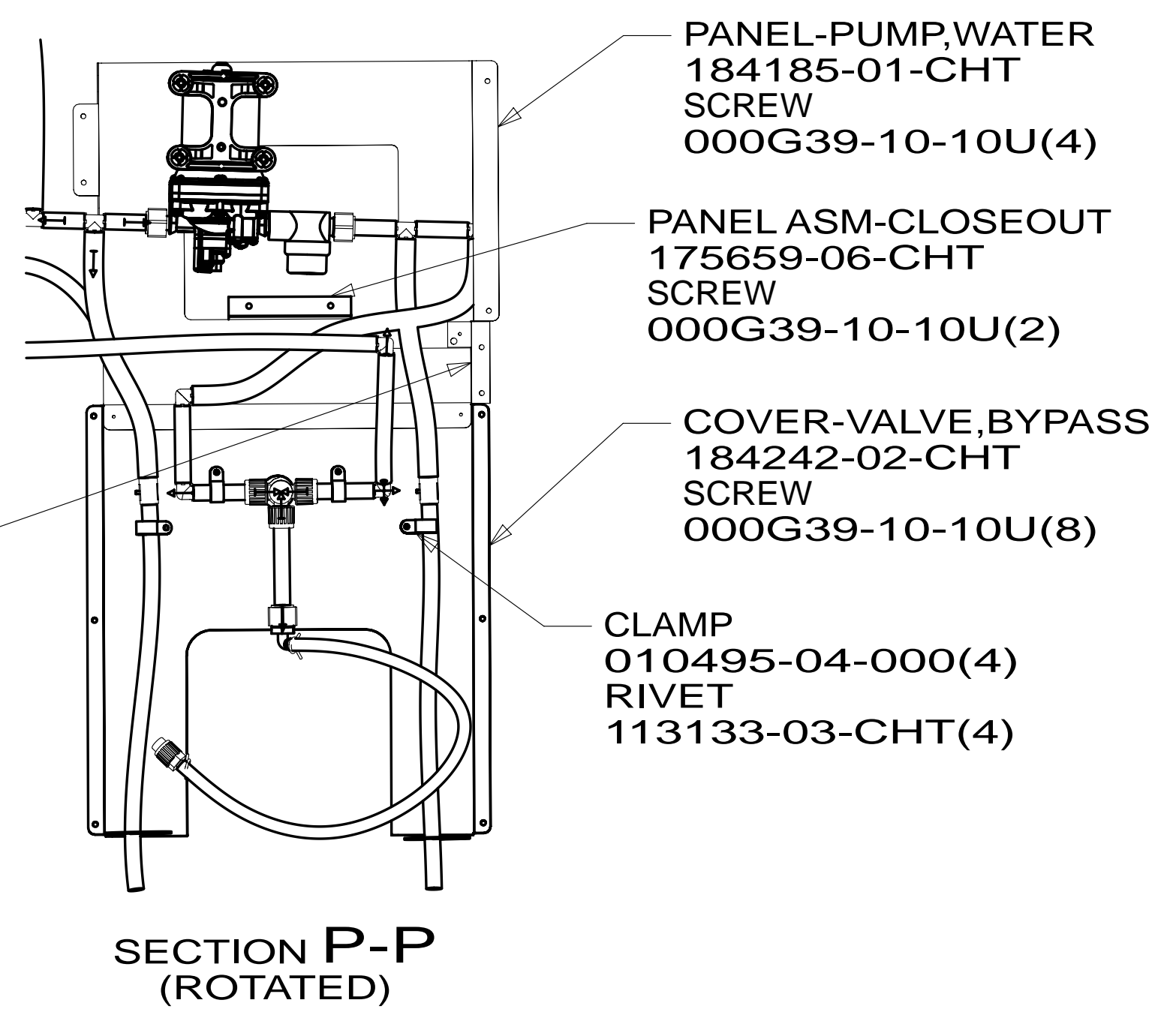
2

1

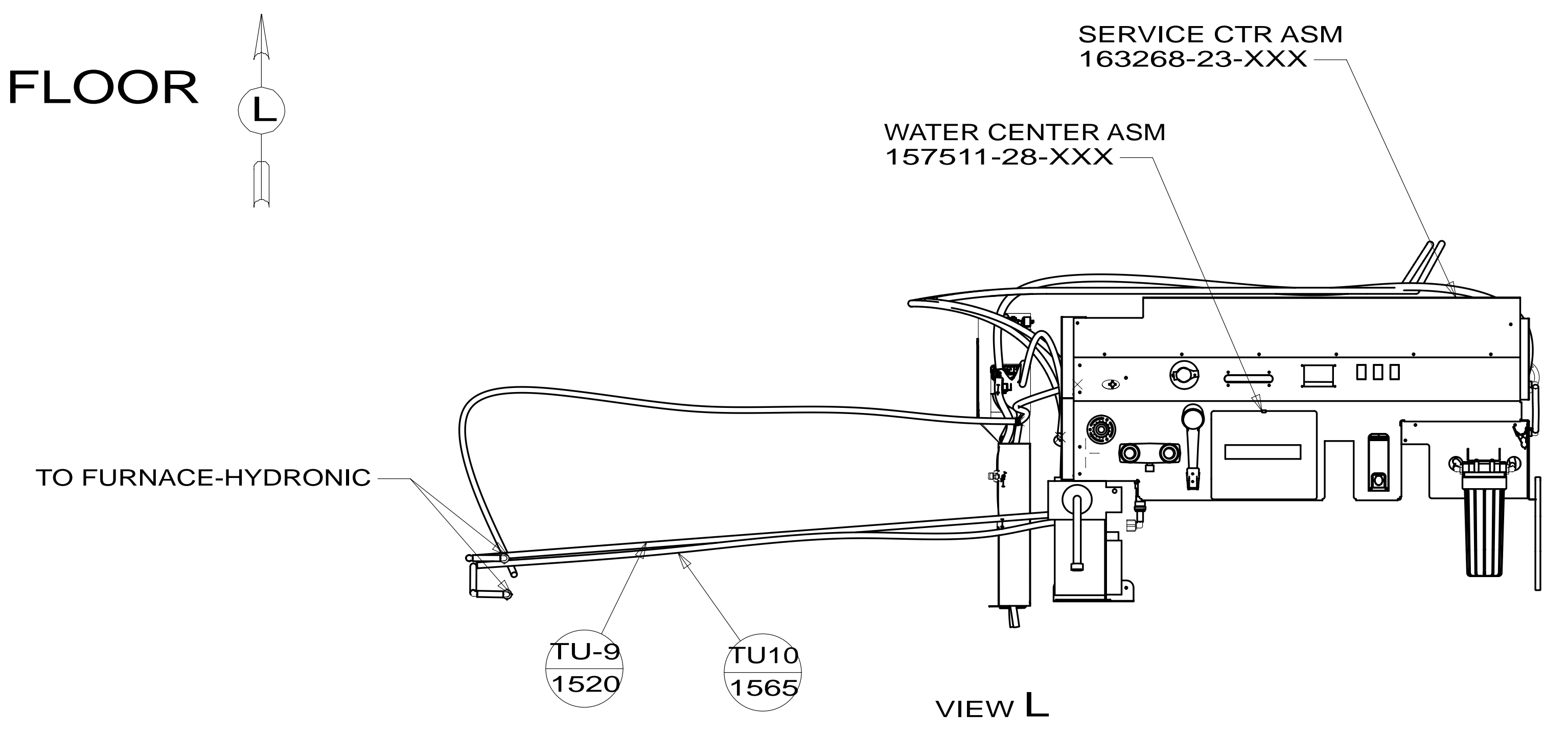
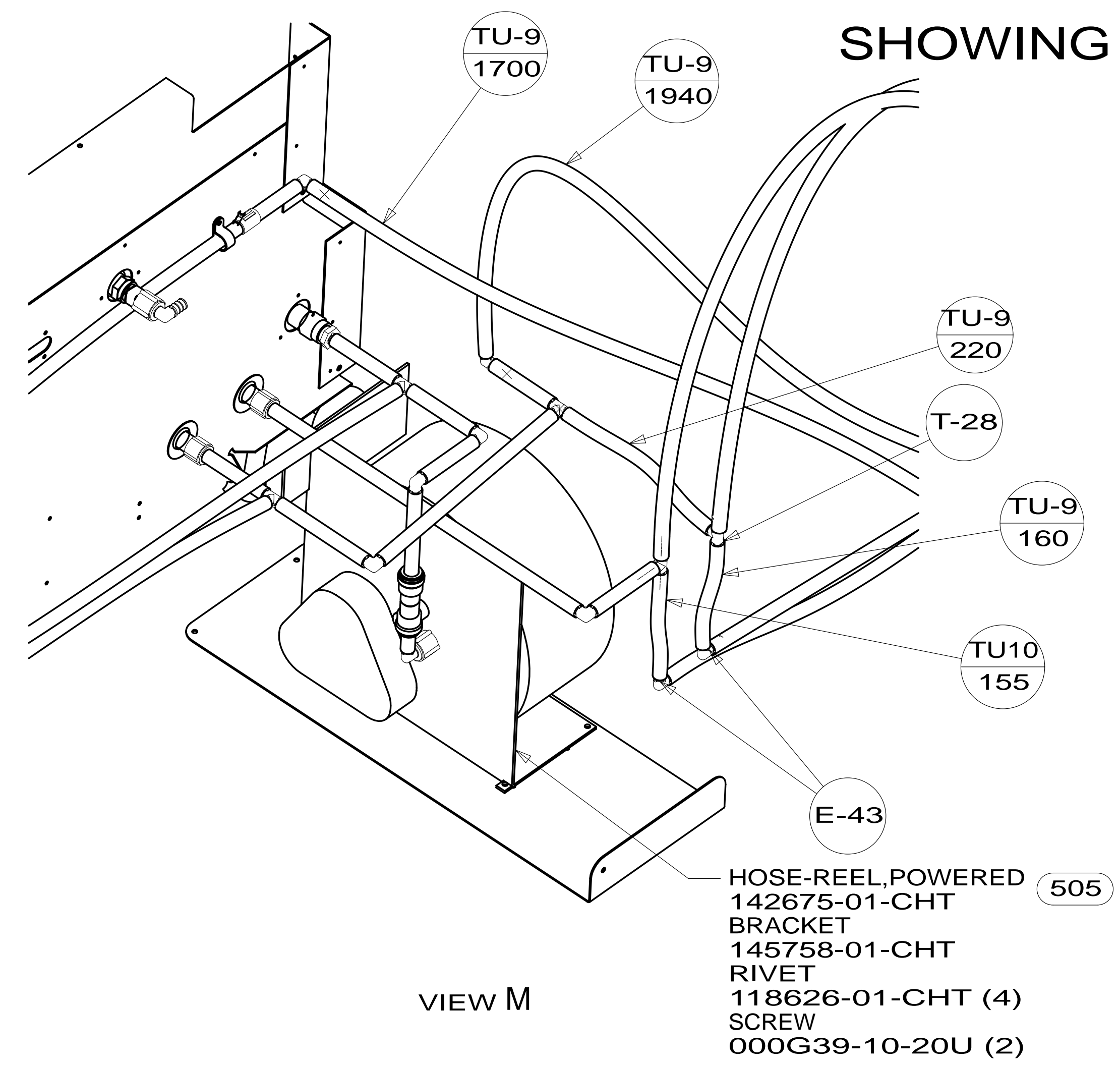
04-Aug-2014

* 184897 *

FIRST USED	14 R42QD	
DO NOT SCALE DRAWING		
TITLE:	WATER SYSTEM INSTL	
SHEET 3	PART NO	184897
	REV	



SHOWING LINES UNDER FLOOR



FIRST USED	14 R42QD	
TITLE:	DO NOT SCALE DRAWING	
SHEET 4	PART NO 184897	REV
04-Aug-2014		

*184897 *A