

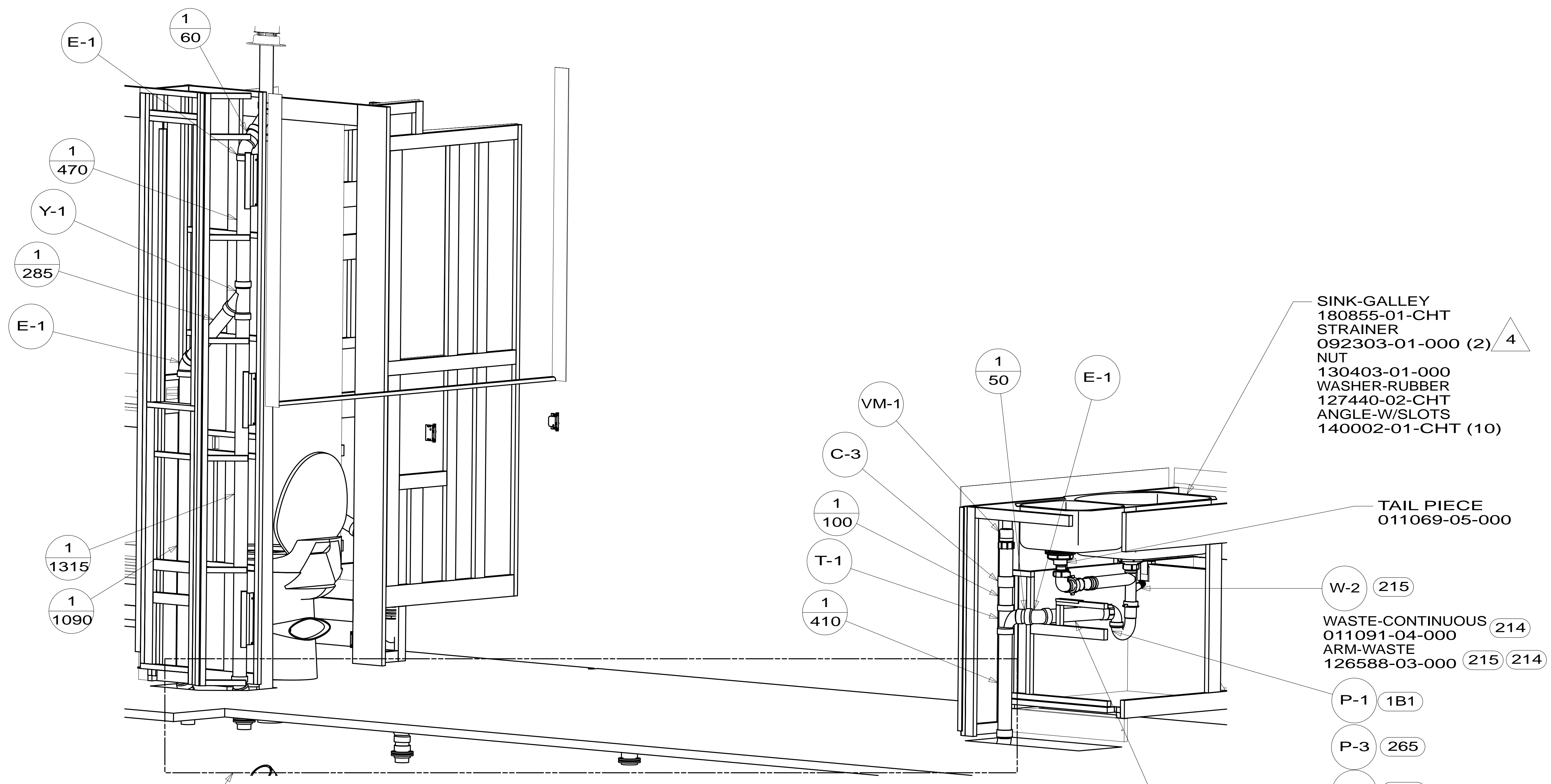
- 9PC TAILGATE PACKAGE
- 9PA TAILGATE PACKAGE WITHOUT
- 21S WASHER/DRYER STACKED
- 1B1 CODES/STANDARDS USA
- 265 CODES/STDS-CSA,CMVSS
- 54E WASHER DRYER
- 21M WASHER/DRYER PREP
- 214 DISHWASHER DRAWER STYLE
- 215 DISHWASHER WITHOUT

- NOTES:
10. APPLY PRIMER 126427-02-000 AND CEMENT 126427-01-000 BETWEEN ELBOW AND FLEX PIPE.
 9. SEE DRAWING 061607 FOR INSTALLATION OF GROMMETS.
 8. SECURE DRAINAGE PIPES TO CABINET USING WIRE TIE 108046-02-000, AND SCREW 000G67-10-12U AT INTERVALS OF NOT OF NOT MORE THAN 4 FEET APART.
 7. SECURE VENT PIPE TO GROMMET WITH CLAMP 062401-02-000.
 6. VENT PIPE MUST PROJECT 51 MIN AND 64 MAX ABOVE ROOF FOR PROPER FIT AND FUNCTION. ADD S-1 (116666-01-CHT SEAL-VENT PIPE) AROUND PIPE ON ROOF BEFORE VENT CAP IS INSTALLED.
 5. SEAL AROUND SHOWER WITH SILICONE.
 4. USE SMOOTH PLUMBERS PUTTY 167459-01-000 TO SEAL STRAINER (0.2 PER STRAINER).
 3. ALL PIPE AND FITTINGS TO BE ASSEMBLED WITH SOLVENT 004020-01-000 (USA), 004020-02-000 (CAN)
 2. SLOPE OF TRAP ARM MUST BE 6 PER 305 mm.
 1. SLOPE OF HORIZONTAL PIPING TO BE MINIMUM OF 3 PER 305 mm.

FOR DRAINAGE CALLOUTS SEE DWG NO 116229-01-000

		COPYRIGHT 2014 WINNEBAGO INDUSTRIES, INC.	
DFT-ORIG	ORIG. DATE	ALL DIMENSIONS ARE IN MILLIMETERS	
CHKR			
P.E.			
M.E.	FIRST USED	14 R42GD	
DSNR			
UNSPECIFIED TOLERANCES ARE:		MATERIAL:	
WHOLE DIM (X)	: 3		
ONE-PLACE (X.X)	: 1.5		
TWO-PLACE (X.XX)	: 0.50		
ANGLE	: 1°		
THIRD ANGLE PROJECTION			
DO NOT SCALE DRAWING		REFER TO ES0018 FOR FASTENER TIGHTENING GUIDELINES	
TITLE: DRAINAGE SYSTEM INSTL			
SHEET 1 OF 4	PART NO 184452	REV	
REF:	1	08-Apr-2014	

* 184452 * A



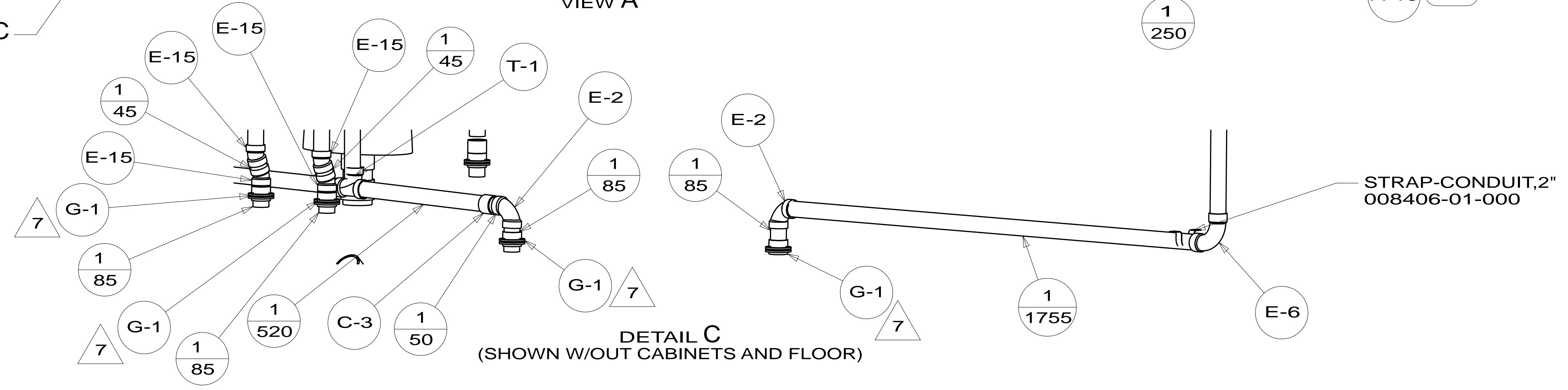
- SINK-GALLEY 180855-01-CHT
- STRAINER 092303-01-000 (2) 4
- NUT 130403-01-000
- WASHER-RUBBER 127440-02-CHT
- ANGLE-W/SLOTS 140002-01-CHT (10)

TAIL PIECE 011069-05-000

- W-2 (215)
- WASTE-CONTINUOUS 011091-04-000 (214)
- ARM-WASTE 126588-03-000 (215) (214)
- P-1 (1B1)
- P-3 (265)
- A-15 (1B1)

VIEW A

DETAIL C

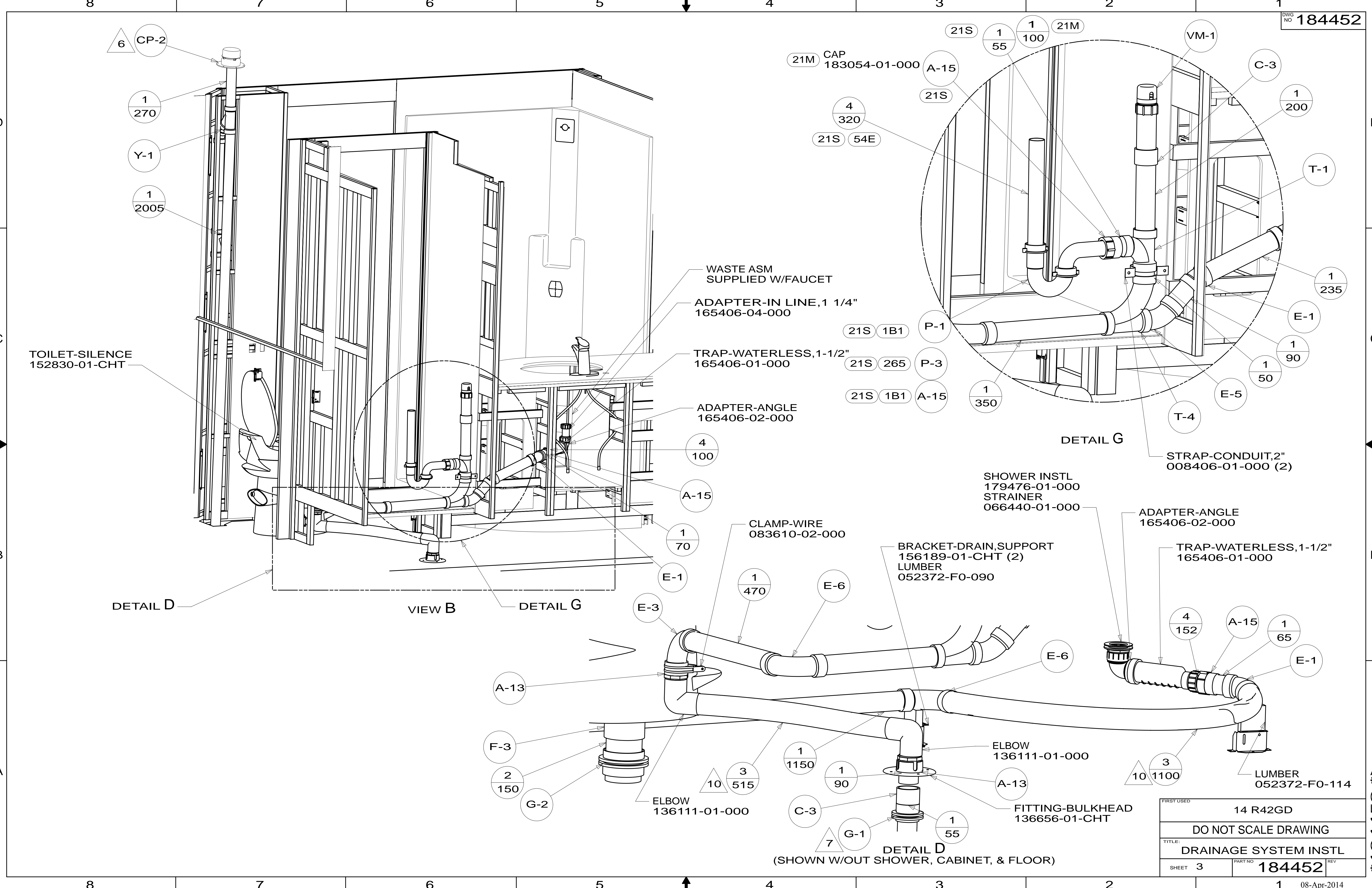


DETAIL C (SHOWN W/OUT CABINETS AND FLOOR)

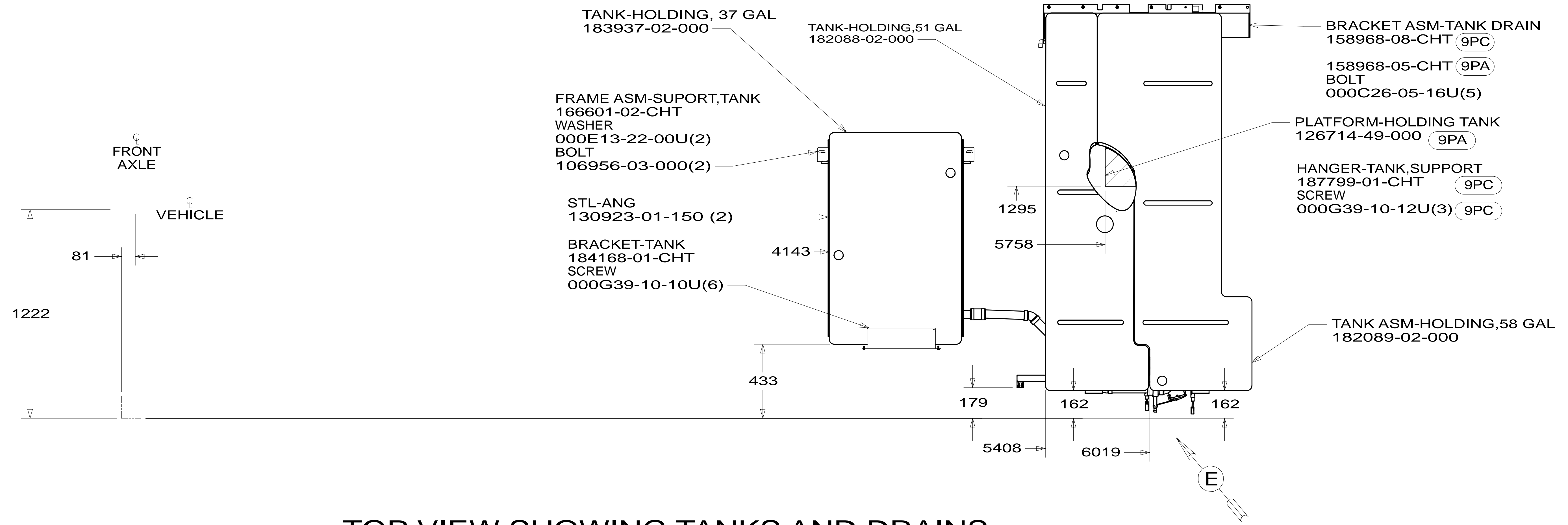
STRAP-CONDUIT, 2" 008406-01-000

FIRST USED	14 R42GD	
DO NOT SCALE DRAWING		
TITLE: DRAINAGE SYSTEM INSTL		
SHEET 2	PART NO 184452	REV
		08-Apr-2014

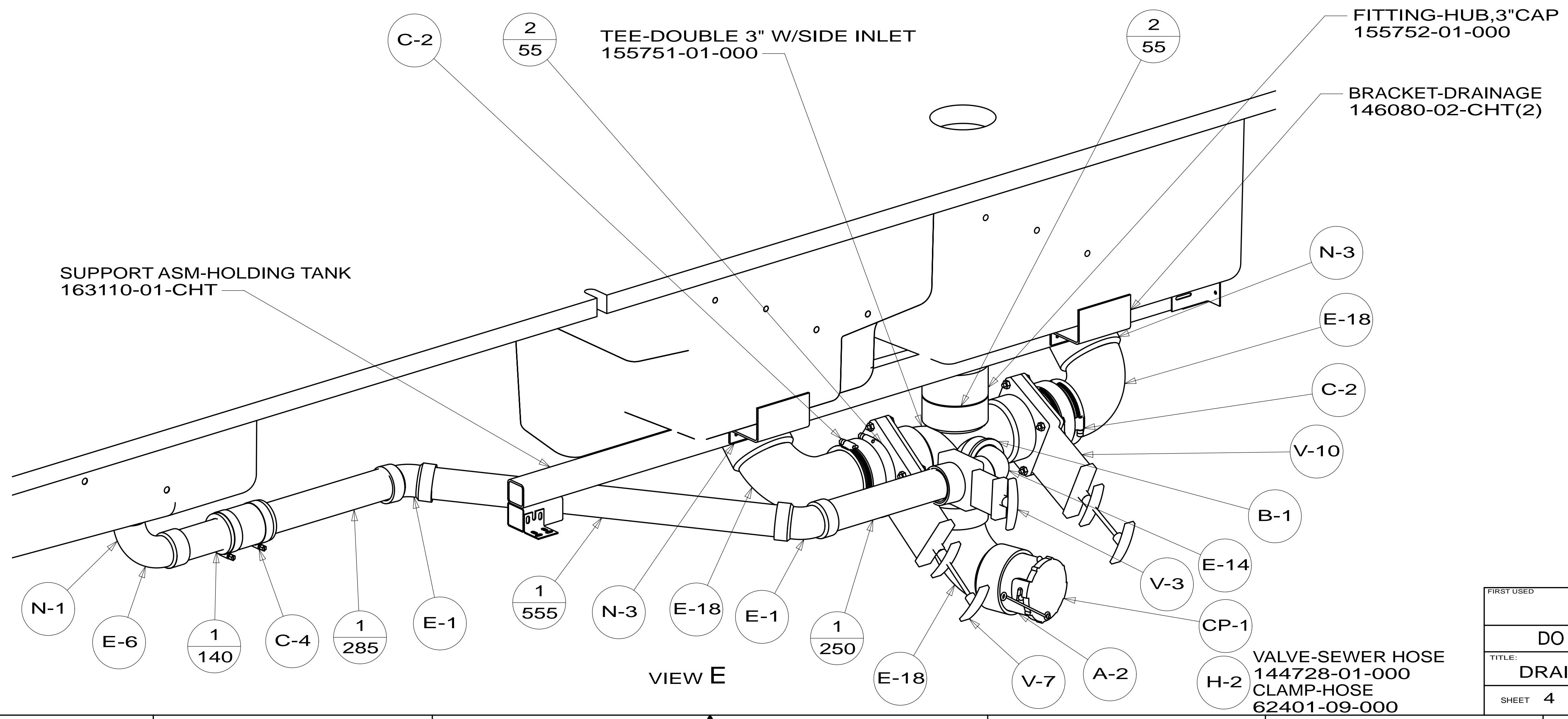
*184452 *A



FIRST USED	14 R42GD
DO NOT SCALE DRAWING	
TITLE: DRAINAGE SYSTEM INSTL	
SHEET 3	PART NO 184452 REV
184452 *A	
08-Apr-2014	



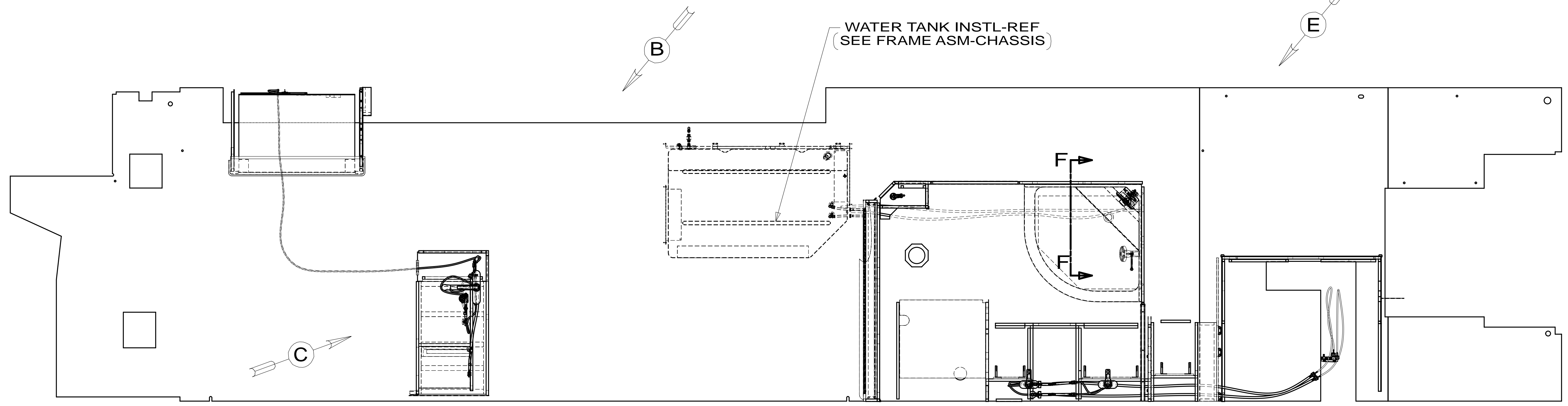
TOP VIEW SHOWING TANKS AND DRAINS



VIEW E

FIRST USED	14 R42GD	
DO NOT SCALE DRAWING		
TITLE:	DRAINAGE SYSTEM INSTL	
SHEET 4	PART NO 184452	REV
		08-Apr-2014

*184452 *A



- NOTES:
1. PLASTIC FITTINGS TO BE SEALED WITH SEALANT 084456-01-000.
 2. TUBING TO BE INSTALLED WITH SUFFICIENT SLOPE TO PROVIDE DRAINAGE TO NEAREST VALVE.
 3. ALL TUBING TO BE SECURED AT 1200 INTERVALS MAXIMUM WITH CLAMP 010495-01-000 AND SCREW 000G67-10-12U OR EQUIVALENT.
 4. ADD TEFLON TAPE 010405-02-000.
 5. LABEL HOT AND COLD SUPPLY TUBES AND TAPE FITTING TO TUBE BEFORE CABINET SET TO PREVENT MOVEMENT.
 6. ALL CRIMP FITTINGS TO PEX TUBING REQUIRE 5/8" CLAMP 140171-04-000.
 7. ALL CRIMP FITTINGS TO PEX TUBING REQUIRE 1/2" CLAMP 140171-03-000.
 8. REQUIRES 5 GALLONS OF 182955-01-000 ANTIFREEZE FOR WINTERIZATION.
 9. VALVE MUST REMAIN OPEN AFTER WATER TEST.
 10. INSTALL FAUCET WITHOUT BASE PLATE.

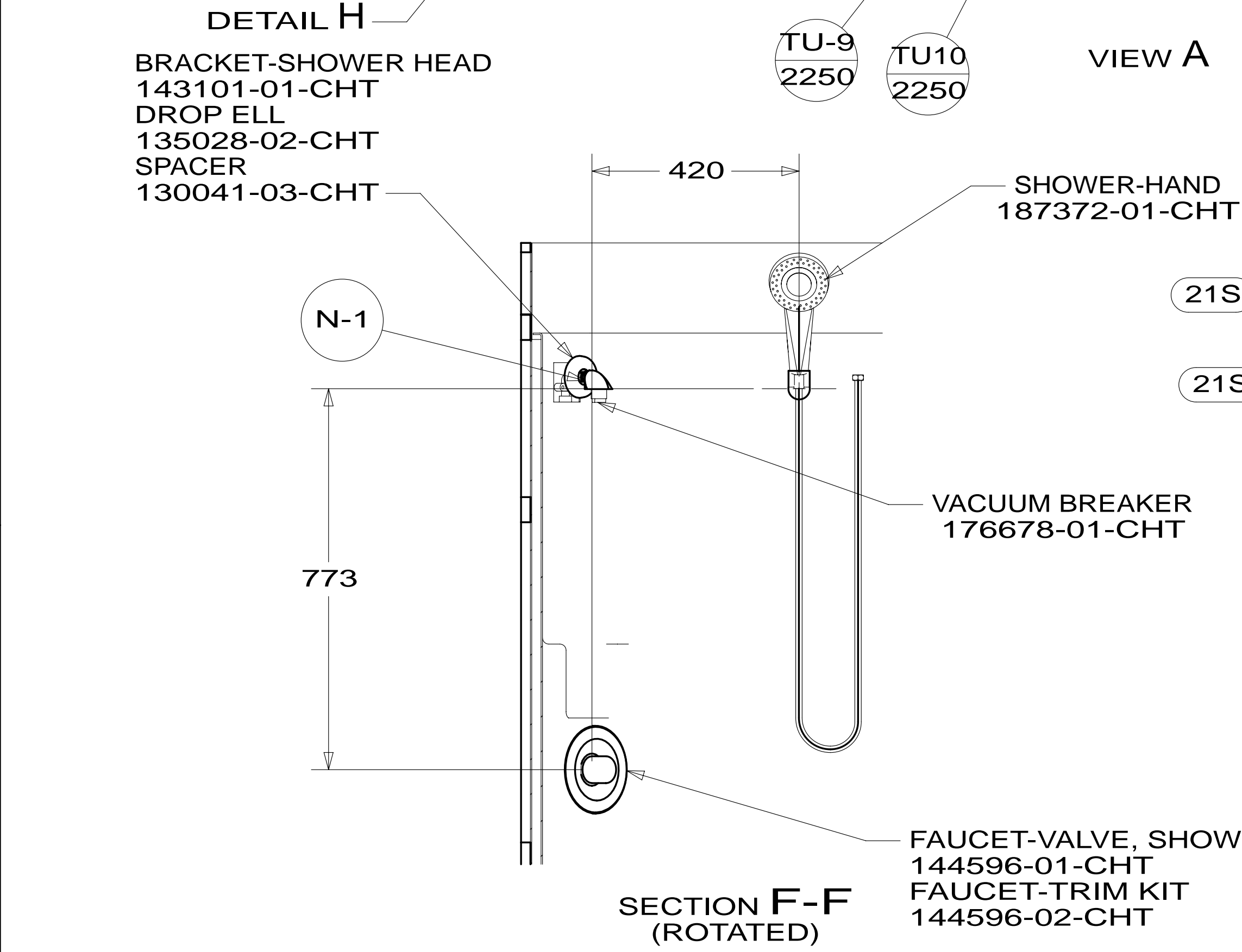
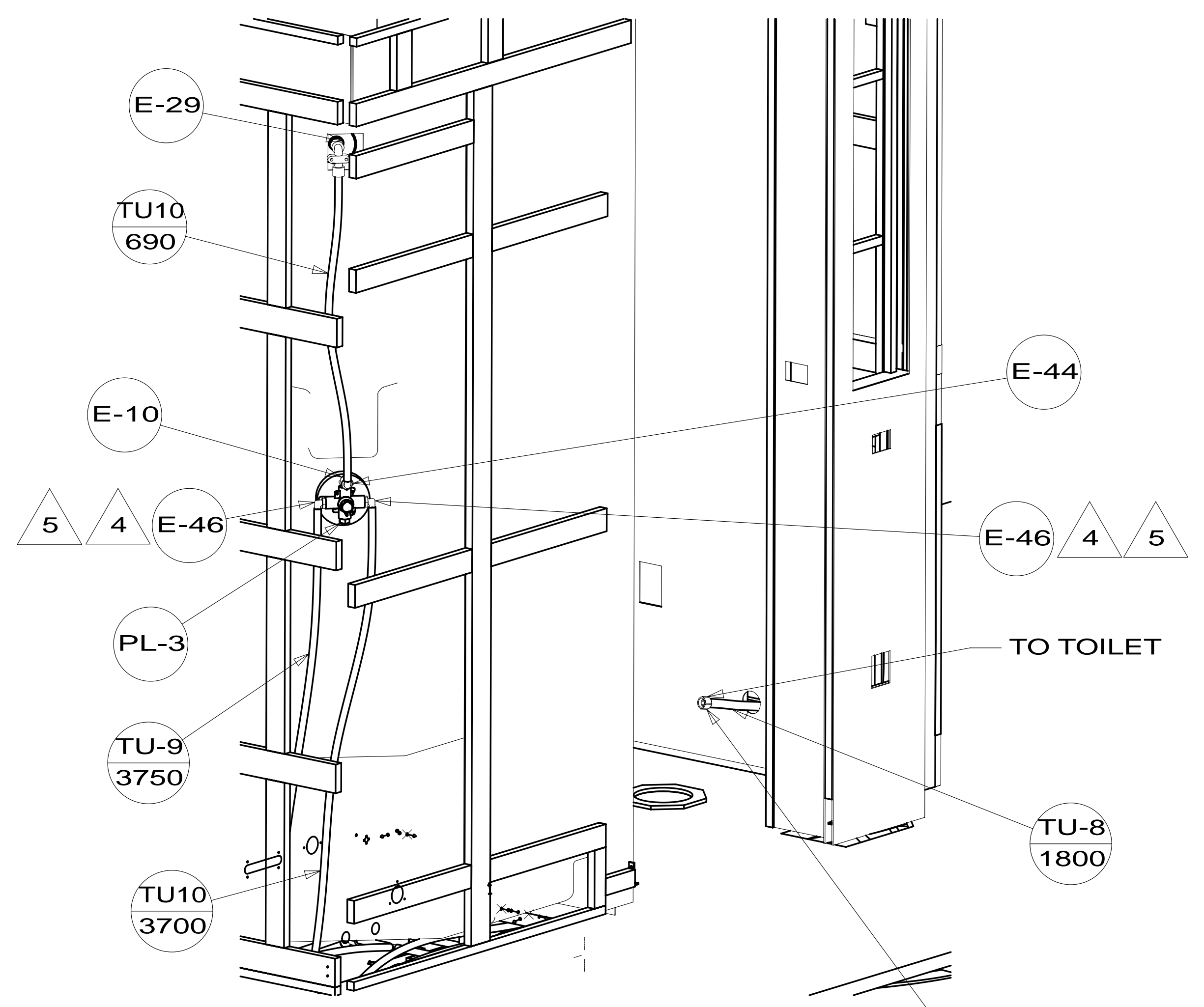
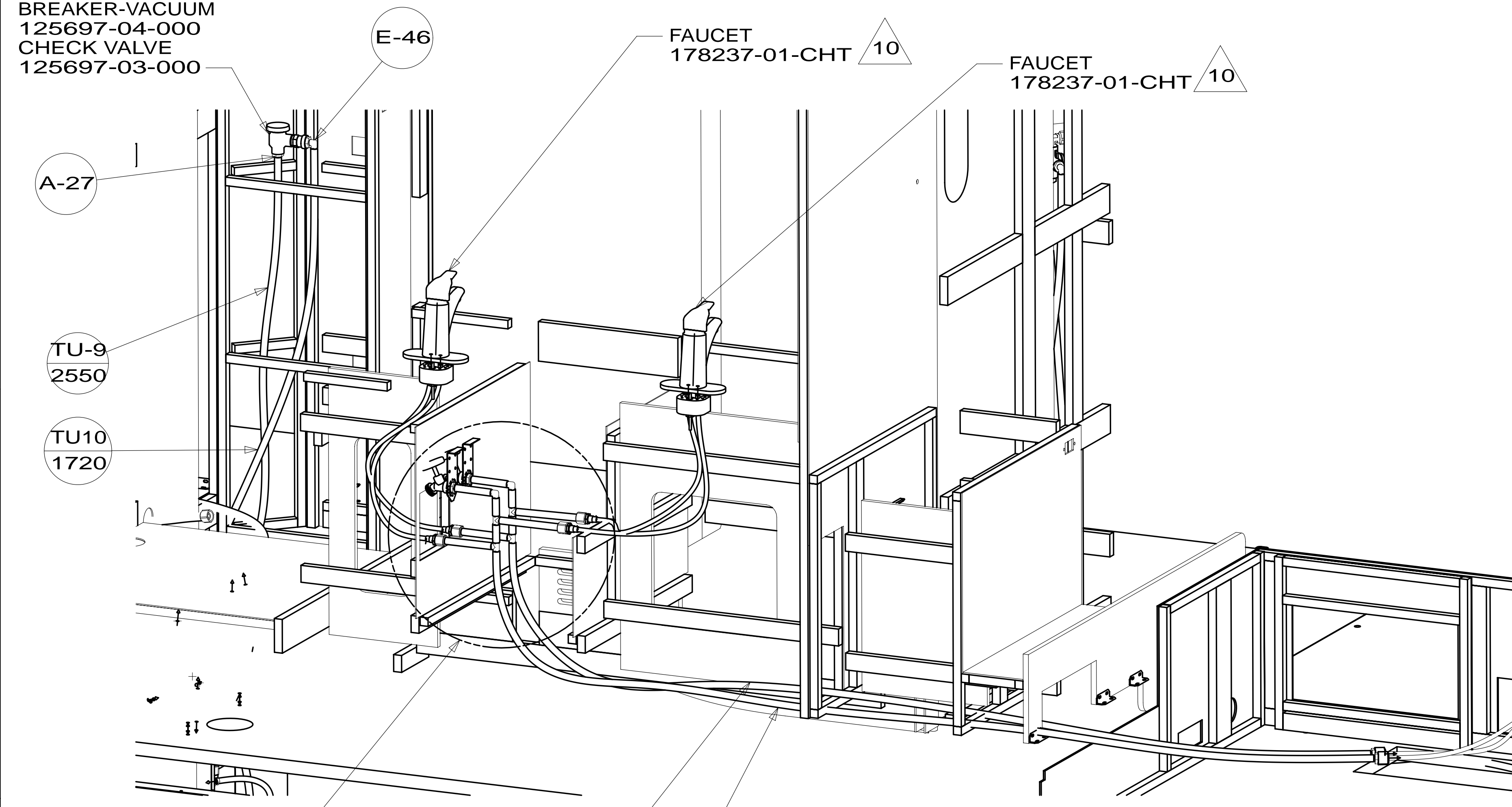
- 9PC TAILGATE PACKAGE
- 21S WASHER & DRYER-PAIR
- 21M WASHER/DRYER PREP
- 214 DISHWASHER-DRAWER STYLE
- 215 DISHWASHER WITHOUT
- 505 HOSE REEL-WATER,POWERED

FOR
WATER
CALLOUTS
SEE DWG NO
116230-01-000

		COPYRIGHT 2014 WINNEBAGO INDUSTRIES, INC.	
DFT-ORIG	ORIG. DATE	ALL DIMENSIONS ARE IN MILLIMETERS	
CHKR			
P.E.			
M.E.	FIRST USED		
DSNR	14 R42GD		
UNSPECIFIED TOLERANCES ARE:		MATERIAL:	
WHOLE DIM (X)	: 3		
ONE-PLACE (X.X)	: 1.5		
TWO-PLACE (X.XX)	: 0.50		
ANGLE	: 1°		
THIRD ANGLE PROJECTION			
DO NOT SCALE DRAWING		REFER TO ES0018 FOR FASTENER TIGHTENING GUIDELINES	
TITLE: WATER SYSTEM INSTL			
SHEET 1 OF 4	PART NO	184451	REV
REF:	1	09-May-2014	

*184451 *A

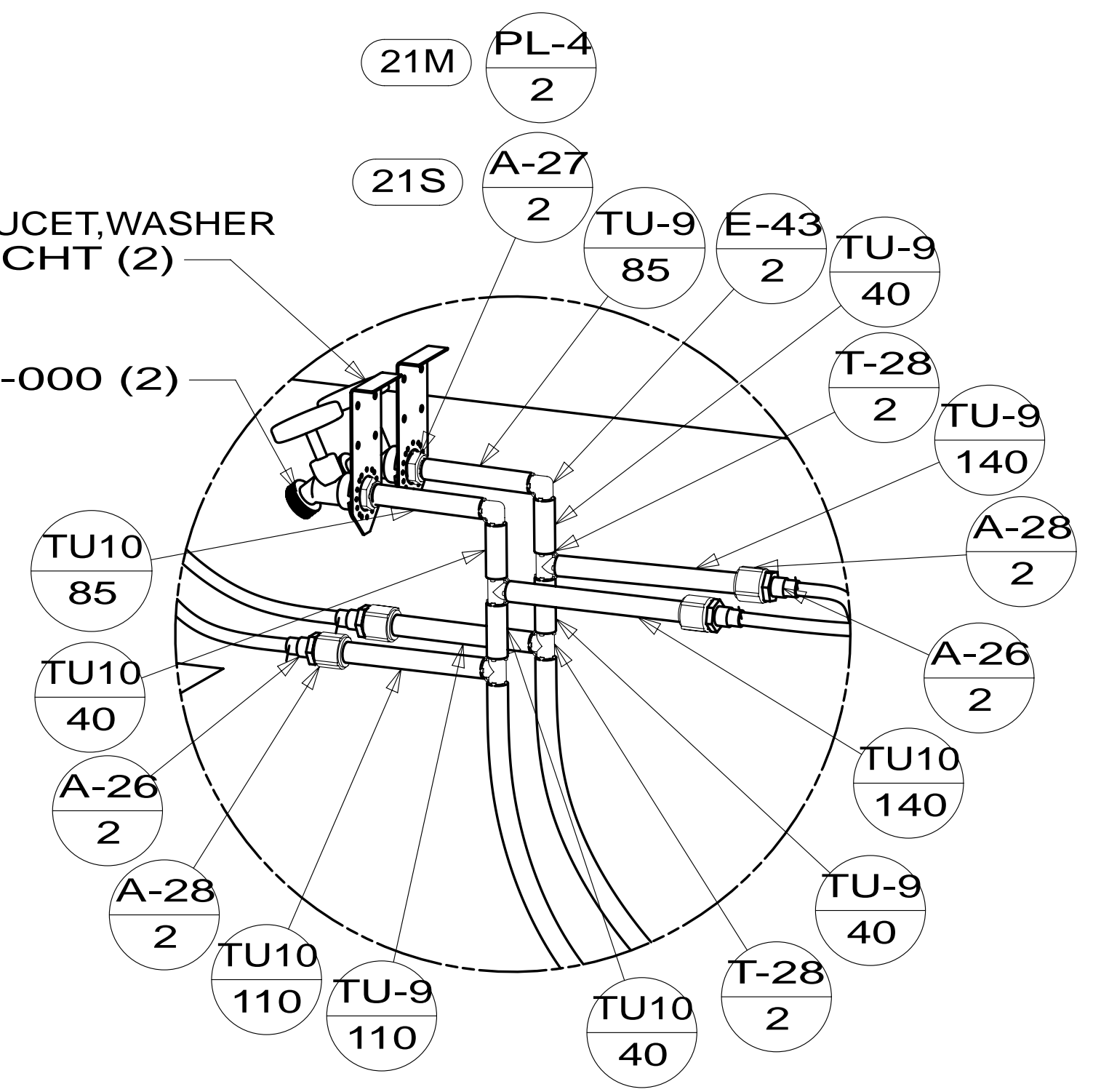
BREAKER-VACUUM
125697-04-000
CHECK VALVE
125697-03-000



VIEW A

VIEW E

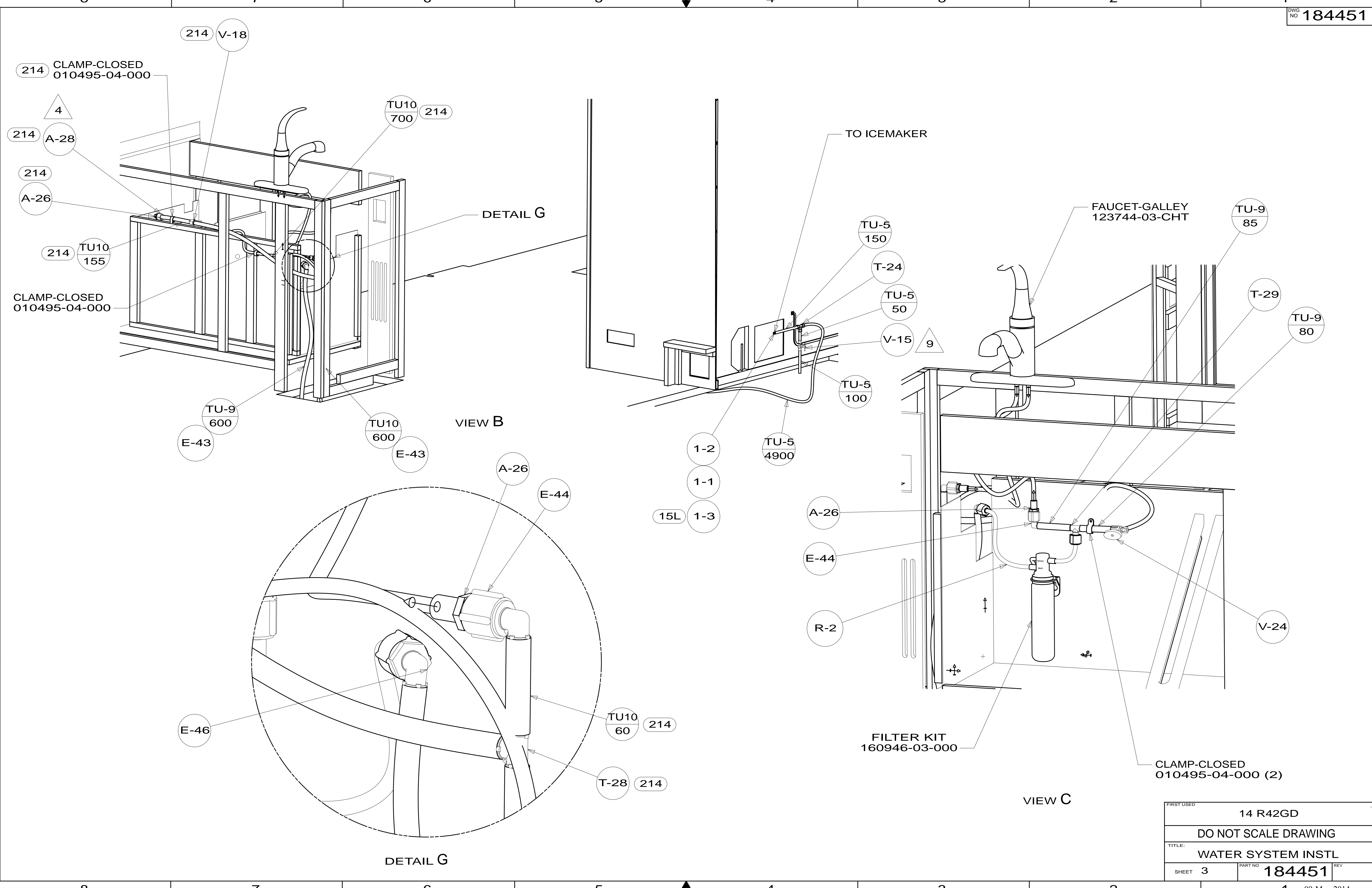
VIEW K



DETAIL H
(SHOWN W/OUT CABINETS)

FIRST USED	14 R42GD
TITLE	DO NOT SCALE DRAWING
SHEET	2
PART NO	184451
REV	09-May-2014

*184451 *A



FIRST USED	14 R42GD		
TITLE:	DO NOT SCALE DRAWING		
SHEET	3	PART NO	184451
REV			
09-May-2014			

*184451 *A

PANEL-PUMP,WATER
184185-01-CHT
SCREW
000G39-10-10U(4)

PANEL ASM-CLOSEOUT
175659-06-CHT
SCREW
000G39-10-10U(2)

PANEL-PUMP,WATER
184241-01-CHT
SCREW
000G39-10-10U (3)

COVER-VALVE,BYPASS
184242-02-CHT
SCREW
000G39-10-10U (8)

CLAMP
010495-04-000 (4)
RIVET
113133-03-CHT (4)

SECTION L-L
(ROTATED)

WATER PUMP CENTER ASM
182945-03-XXX

PORT-SPRAY
184487-01-CHT (9PC)

TU-9
1600

A-28 (9PC)

TU-8
2120 (9PC)

TU-9
2950

TU10
2950

TU-8
1800

TU10
4475

TU-9
4570

TO FURNACE-HYDRONIC

A-28

E-44

J

SHOWING LINES UNDER FLOOR

SERVICE CENTER ASM
163268-24-XXX

WATER SYSTEM INSTL
157511-28-XXX

HOSE-REEL,POWERED
142675-01-CHT (505)
BRACKET
145758-01-CHT
RIVET
118626-01-CHT (4)
SCREW
000G39-10-20U (2)

SECTION M-M

VIEW N

VIEW J

FIRST USED	14 R42GD		
TITLE:	DO NOT SCALE DRAWING		
SHEET	4	PART NO	184451
REV			
09-May-2014			

*184451 *A