

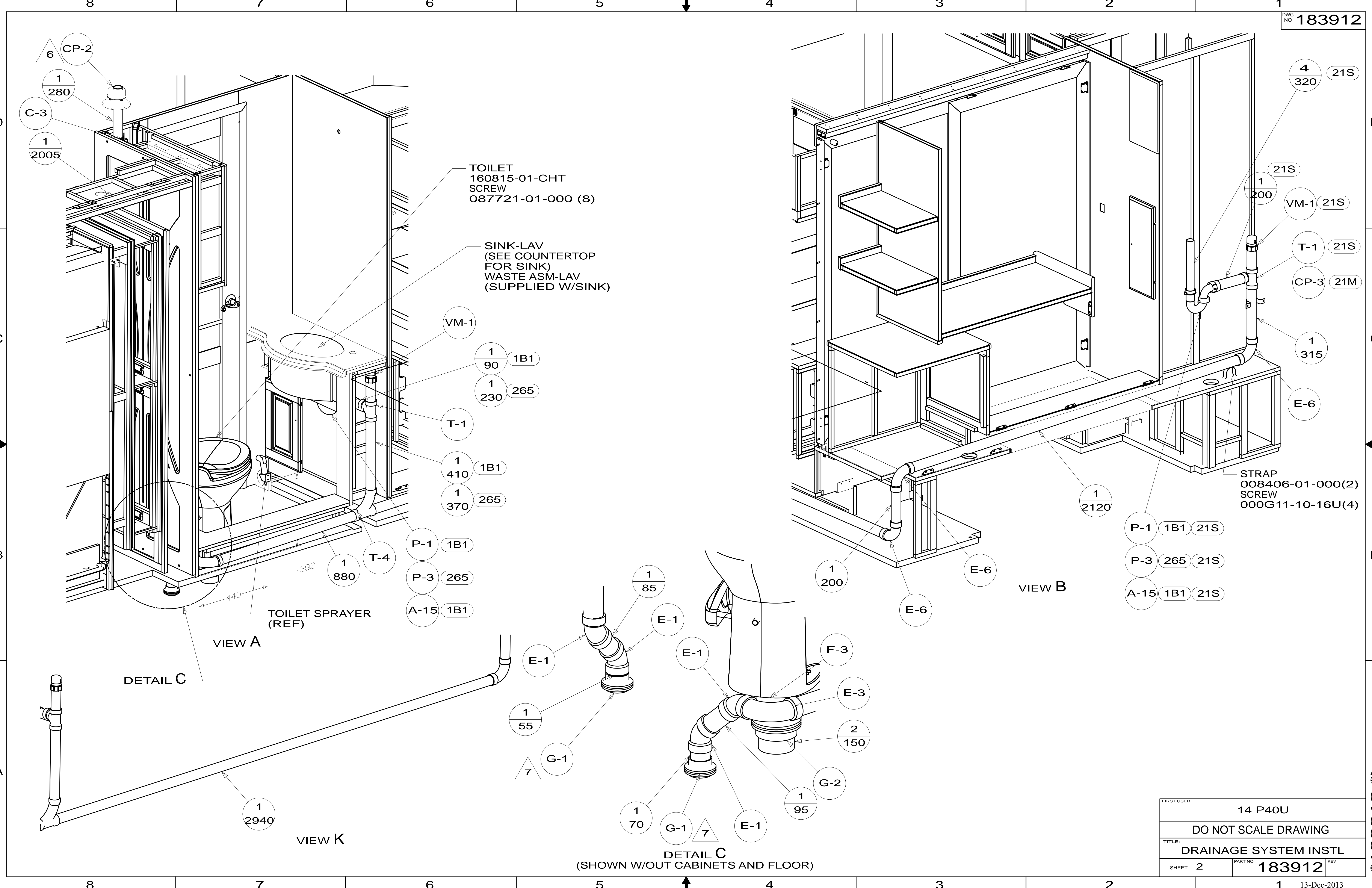
- NOTES:
9. APPLY PRIMER 126427-02-000 AND CEMENT 126427-01-000 BETWEEN ELBOW AND FLEX PIPE.
  8. SECURE DRAINAGE PIPES TO CABINET USING WIRE TIE 108046-02-000, AND SCREW 000G67-10-12U AT INTERVALS OF NOT MORE THAN 4 FEET APART.
  7. SECURE VENT PIPE TO GROMMET WITH CABLE TIE 062401-02-000.
  6. VENT PIPE MUST PROJECT 51 MIN AND 64 MAX ABOVE ROOF FOR PROPER FIT AND FUNCTION. ADD S-1 (116666-01-CHT SEAL-VENT PIPE) AROUND PIPE ON ROOF BEFORE VENT CAP IS INSTALLED.
  5. SEAL AROUND SHOWER WITH SILICONE.
  4. USE SMOOTH PLUMBERS PUTTY 167459-01-000 TO SEAL STRAINER (0.2 PER STRAINER).
  3. ALL PIPE AND FITTINGS TO BE ASSEMBLED WITH SOLVENT 004020-01-000 (USA), 004020-02-000 (CAN)
  2. SLOPE OF TRAP ARM MUST BE 6 PER 305 mm.
  1. SLOPE OF HORIZONTAL PIPING TO BE MINIMUM OF 3 PER 305 mm.

- 1B1 CODES/STANDARDS USA
- 265 CODES/STANDARDS-CSA/CMVSS
- 21S WASHER & DRYER-PAIR
- 21M WASHER/DRYER PREP

FOR DRAINAGE CALLOUTS SEE DWG NO 116229-01-000

|                              |                |  |
|------------------------------|----------------|--|
|                              |                | COPYRIGHT 2013<br>WINNEBAGO<br>INDUSTRIES, INC.    |
| DFT-ORIG                     | ORIG. DATE     |  |
| CHKR                         |                | ALL DIMENSIONS ARE IN MILLIMETERS                  |
| P.E.                         |                |  |
| M.E.                         | FIRST USED     |  |
| DSNR                         |                | 14 P40U  |
| UNSPECIFIED TOLERANCES ARE:  |                | MATERIAL:  |
| WHOLE DIM (X)                | : 3            |  |
| ONE-PLACE (X.X)              | : 1.5          |  |
| TWO-PLACE (X.XX)             | : 0.50         |  |
| ANGLE                        | : 1°           |  |
| THIRD ANGLE PROJECTION       |                |  |
| DO NOT SCALE DRAWING         |                | REFER TO ES0018 FOR FASTENER TIGHTENING GUIDELINES |
| TITLE: DRAINAGE SYSTEM INSTL |                |  |
| SHEET 1 OF 4                 | PART NO 183912 | REV  |
| REF:                         | 1              | 13-Dec-2013  |

\* 183912 \* A



TOILET  
160815-01-CHT  
SCREW  
087721-01-000 (8)

SINK-LAV  
(SEE COUNTERTOP  
FOR SINK)  
WASTE ASM-LAV  
(SUPPLIED W/SINK)

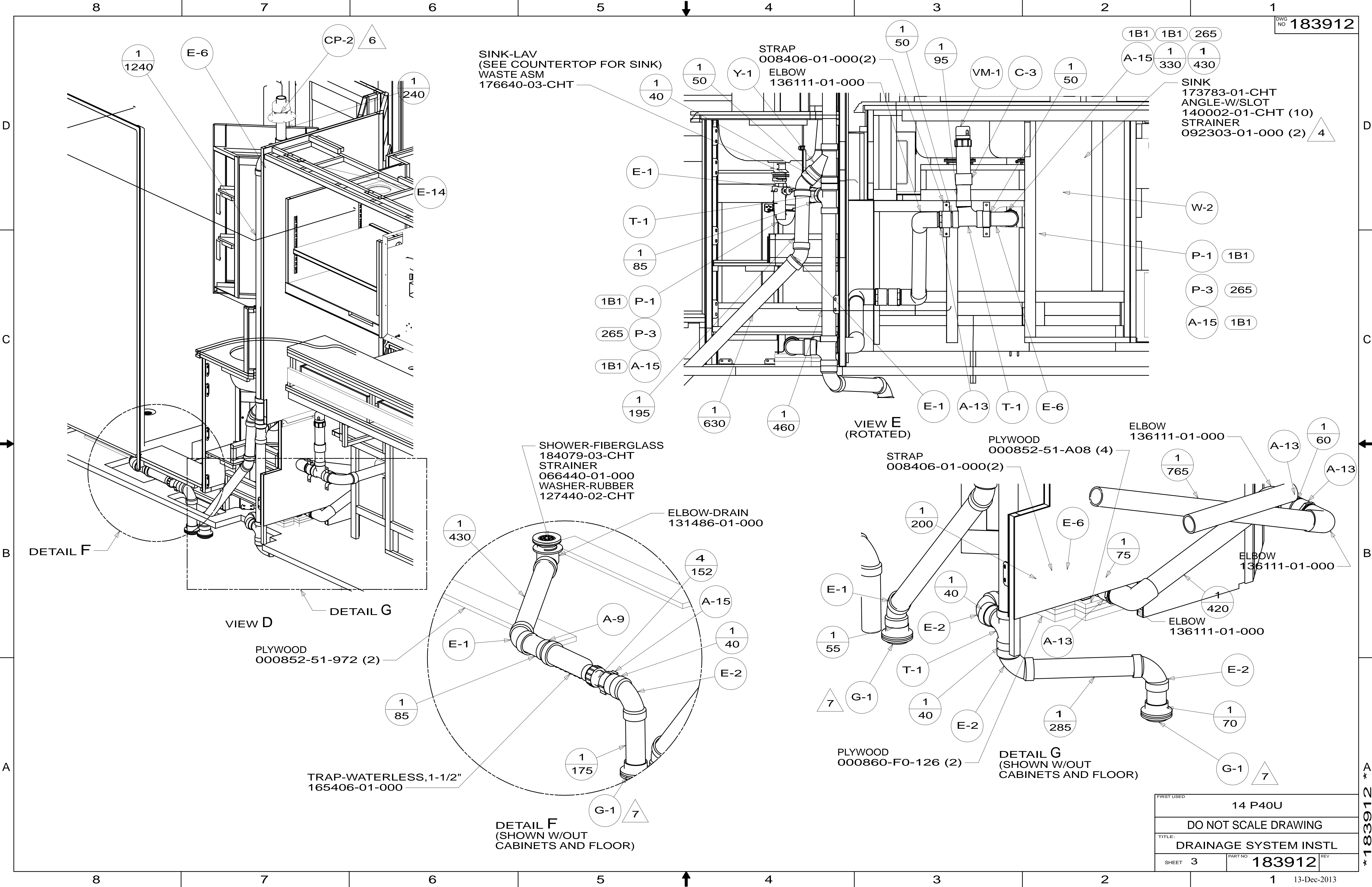
STRAP  
008406-01-000(2)  
SCREW  
000G11-10-16U(4)

TOILET SPRAYER  
(REF)

DETAIL C  
(SHOWN W/OUT CABINETS AND FLOOR)

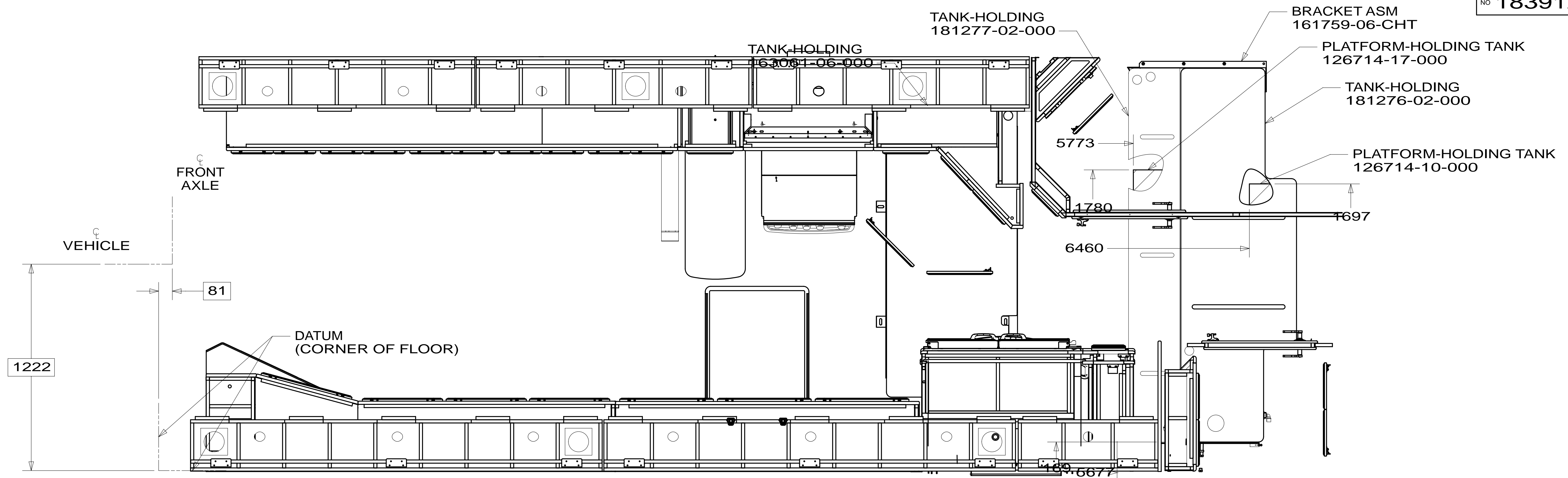
|             |                       |     |
|-------------|-----------------------|-----|
| FIRST USED  | 14 P40U               |     |
| TITLE:      | DO NOT SCALE DRAWING  |     |
|             | DRAINAGE SYSTEM INSTL |     |
| SHEET 2     | PART NO 183912        | REV |
| 13-Dec-2013 |                       |     |

\* 183912 \* A

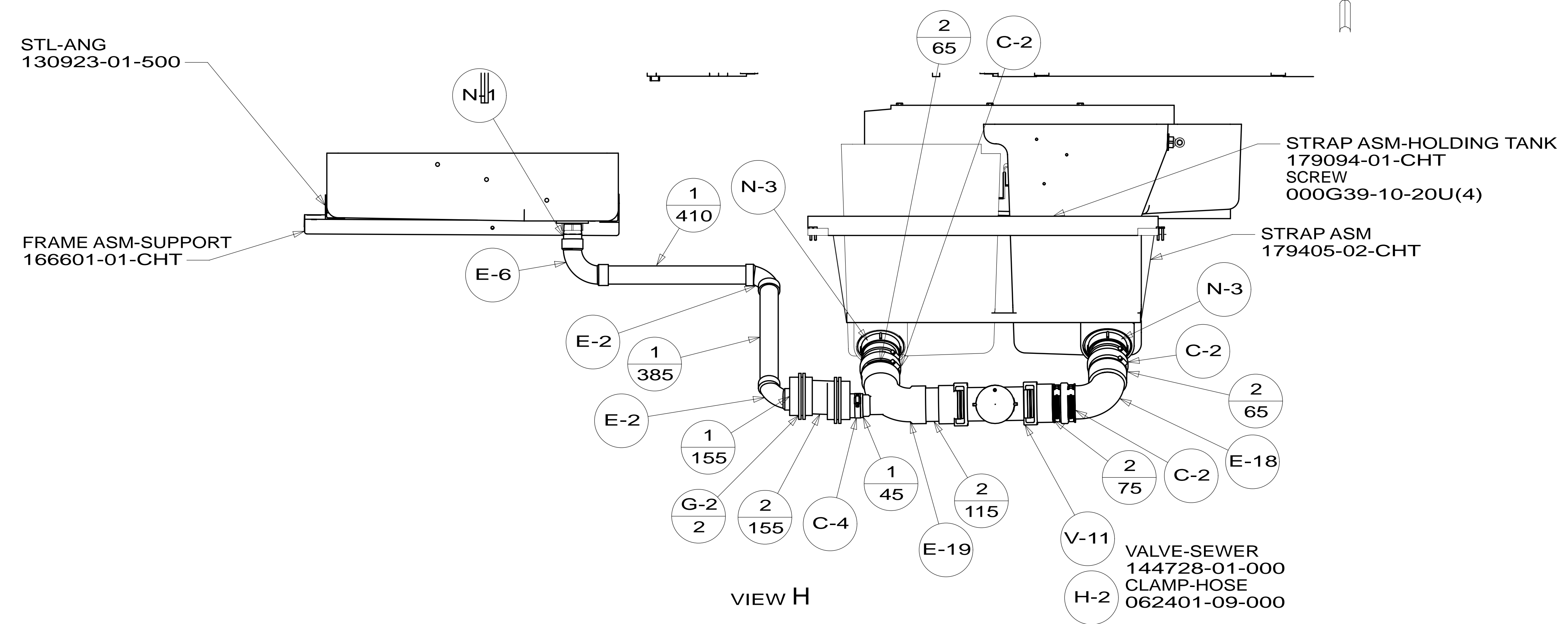


|                                 |                   |     |
|---------------------------------|-------------------|-----|
| FIRST USED                      | 14 P40U           |     |
| DO NOT SCALE DRAWING            |                   |     |
| TITLE:<br>DRAINAGE SYSTEM INSTL |                   |     |
| SHEET 3                         | PART NO<br>183912 | REV |

\* 183912 \* A



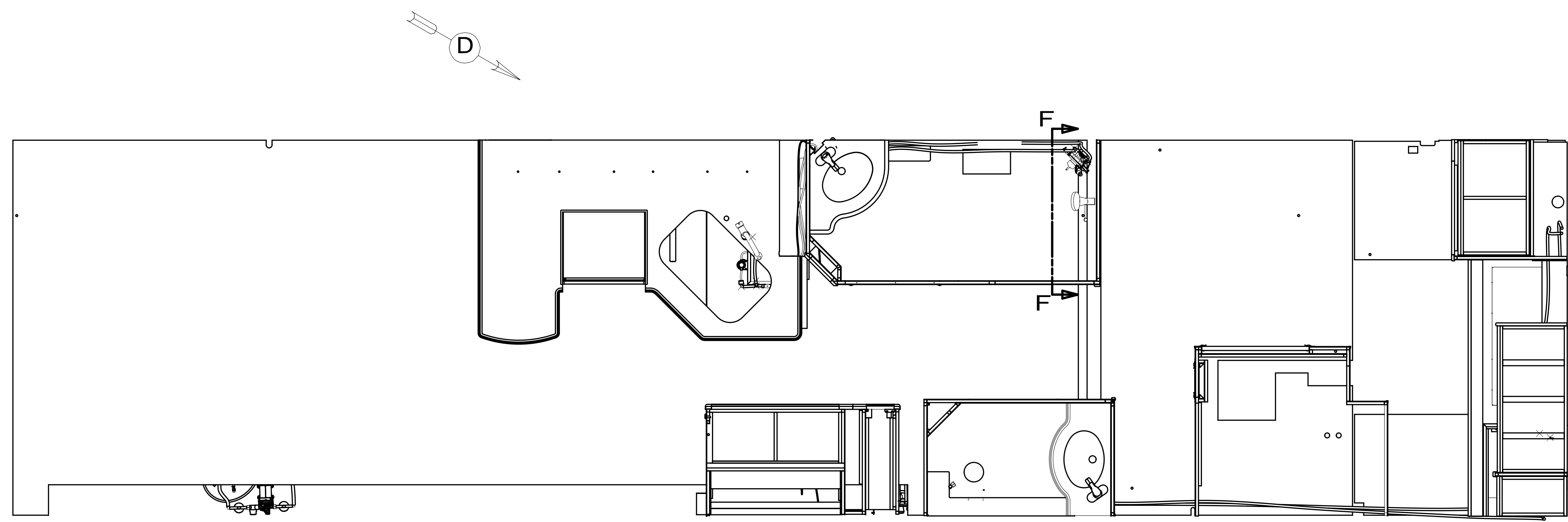
SHOWING ONLY DRAINS AND TANKS



VIEW H

|             |                      |     |
|-------------|----------------------|-----|
| FIRST USED  | 14 P40U              |     |
| TITLE:      | DO NOT SCALE DRAWING |     |
| SHEET       | PART NO              | REV |
| 4           | 183912               |     |
| 13-Dec-2013 |                      |     |

\* 183912 \* A



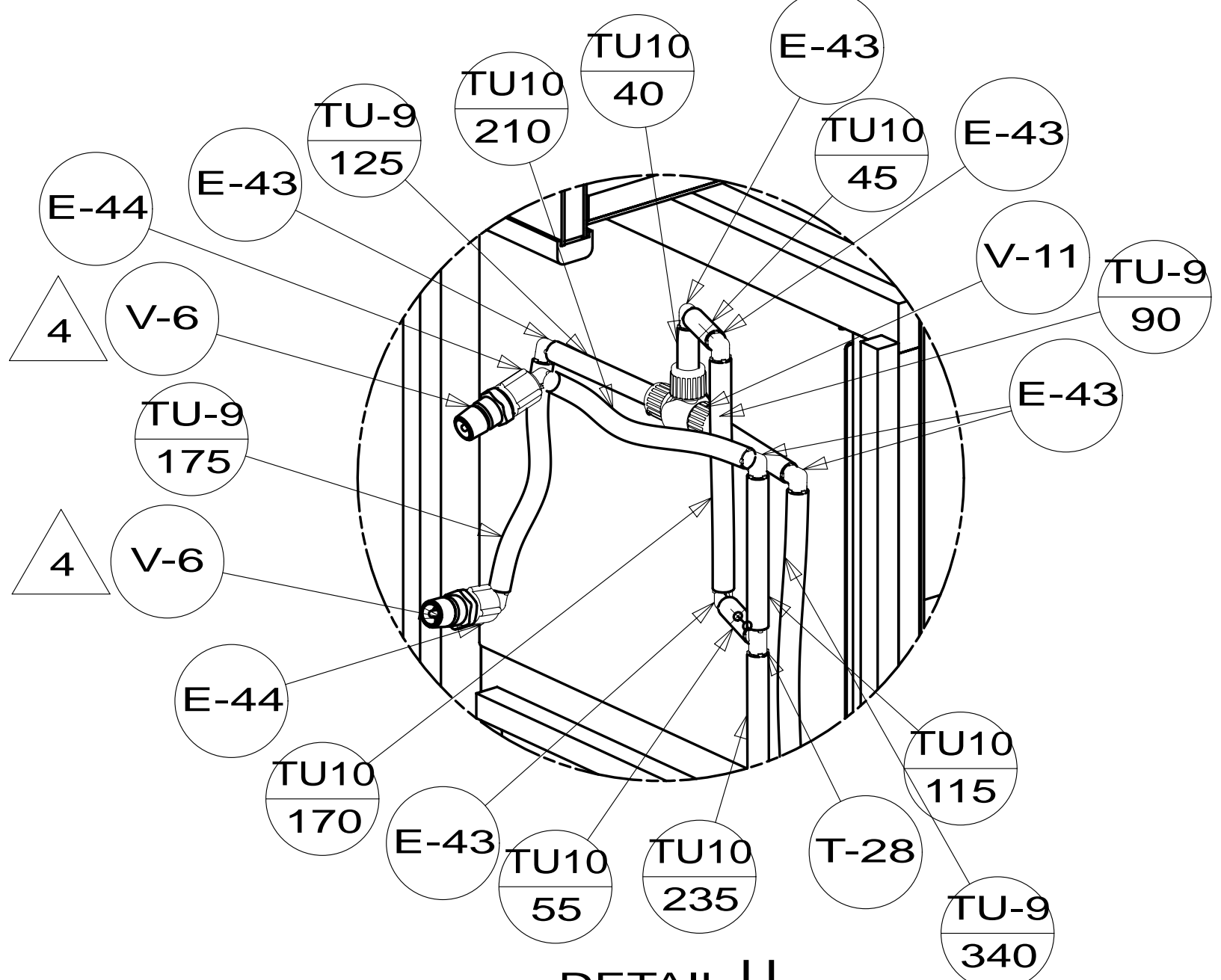
- NOTES:
1. PLASTIC FITTINGS TO BE SEALED WITH SEALANT 084456-01-000.
  2. TUBING TO BE INSTALLED WITH SUFFICIENT SLOPE TO PROVIDE DRAINAGE TO NEAREST VALVE.
  3. ALL TUBING TO BE SECURED AT 1200 INTERVALS MAXIMUM WITH CLAMP 010495-01-000 AND SCREW 000G67-10-12U OR EQUIVALENT.
  4. ADD TEFLON TAPE 010405-02-000.
  5. ADD PIPE WRAP (LADDER SCRAP 110157-02-000) INSULATION.
  6. LABEL HOT AND COLD SUPPLY TUBES AND TAPE FITTING TO TUBE BEFORE CABINET SET TO PREVENT MOVEMENT.
  7. ALL CRIMP FITTINGS TO 5/8" PEX TUBING REQUIRE 5/8" CLAMP 140171-04-000.
  8. ALL CRIMP FITTINGS TO 1/2" PEX TUBING REQUIRE 1/2" CLAMP 140171-03-000.
  9. VALVE MUST REMAIN OPEN AFTER WATER TEST.
  10. WIRE TIE WATER LINES W/FLEXIBLE DRAIN LINE.
  11. INSTALL FAUCET WITHOUT BASE PLATE.
  12. CLAMP ICEMAKER LINE TO SIDEWALL, AWAY FROM BURNER BOX ON REFRIGERATOR.

- (21M) WASHER/DRYER PREP
- (21S) WASHER & DRYER-PAIR
- (15L) REFR/FRZR 2DOOR RESIDENTIAL
- (79W) REFRIGERATOR-4 DOOR
- (WIN) WINNEBAGO ONLY
- (ITA) ITASCA ONLY

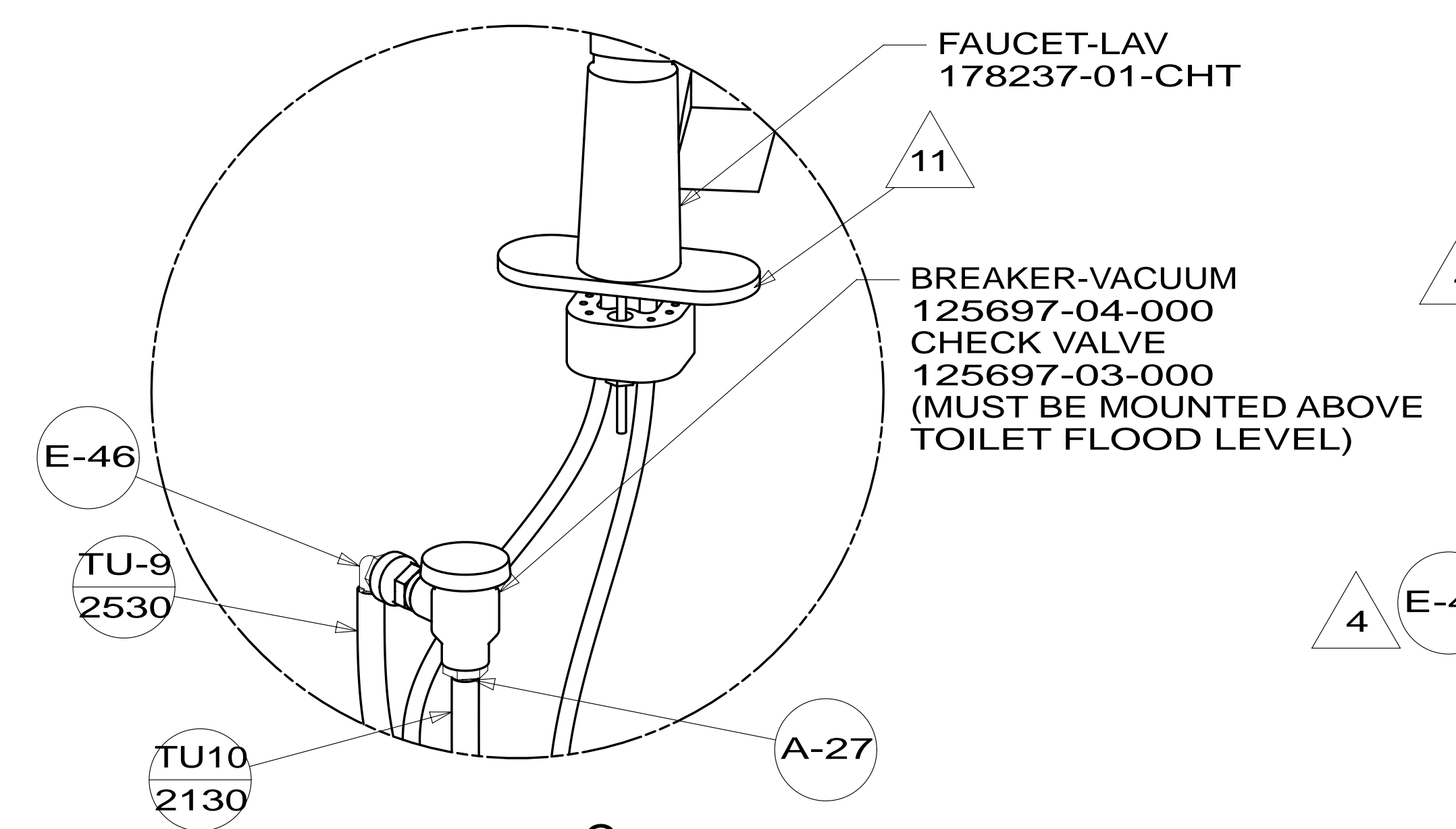
FOR WATER CALLOUTS SEE DWG NO 116230-01-000

|                             |                |  |  |
|-----------------------------|----------------|--|--|
|                             |                | COPYRIGHT 2014 WINNEBAGO INDUSTRIES, INC.          |  |
| DFT-ORIG                    | ORIG. DATE     | ALL DIMENSIONS ARE IN MILLIMETERS                  |  |
| CHKR                        |                |  |  |
| P.E.                        |                |  |  |
| M.E.                        | FIRST USED     | 14 P40U  |  |
| DSNR                        |                |  |  |
| UNSPECIFIED TOLERANCES ARE: |                | MATERIAL:  |  |
| WHOLE DIM (X)               | : 3            |  |  |
| ONE-PLACE (X.X)             | : 1.5          |  |  |
| TWO-PLACE (X.XX)            | : 0.50         |  |  |
| ANGLE                       | : 1°           |  |  |
| THIRD ANGLE PROJECTION      |                |  |  |
| DO NOT SCALE DRAWING        |                | REFER TO ES0018 FOR FASTENER TIGHTENING GUIDELINES |  |
| TITLE: WATER SYSTEM INSTL   |                |  |  |
| SHEET 1 OF 4                | PART NO 183913 | REV  |  |
| REF:                        | 1              | 14-Feb-2014  |  |

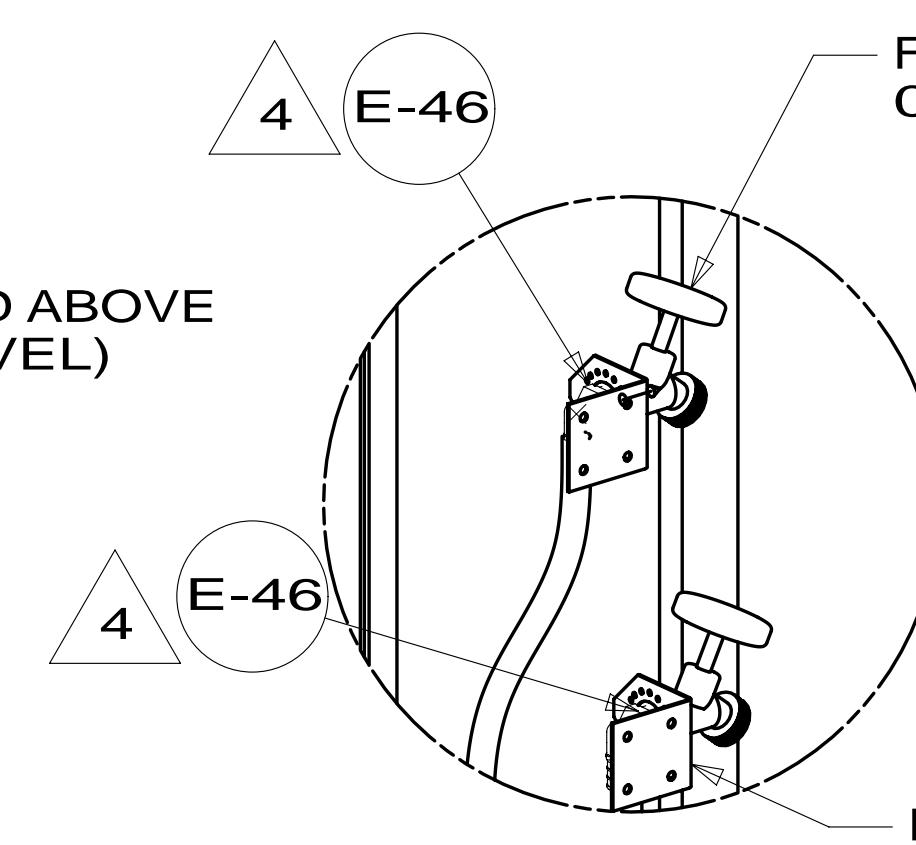
\* 183913 \* A



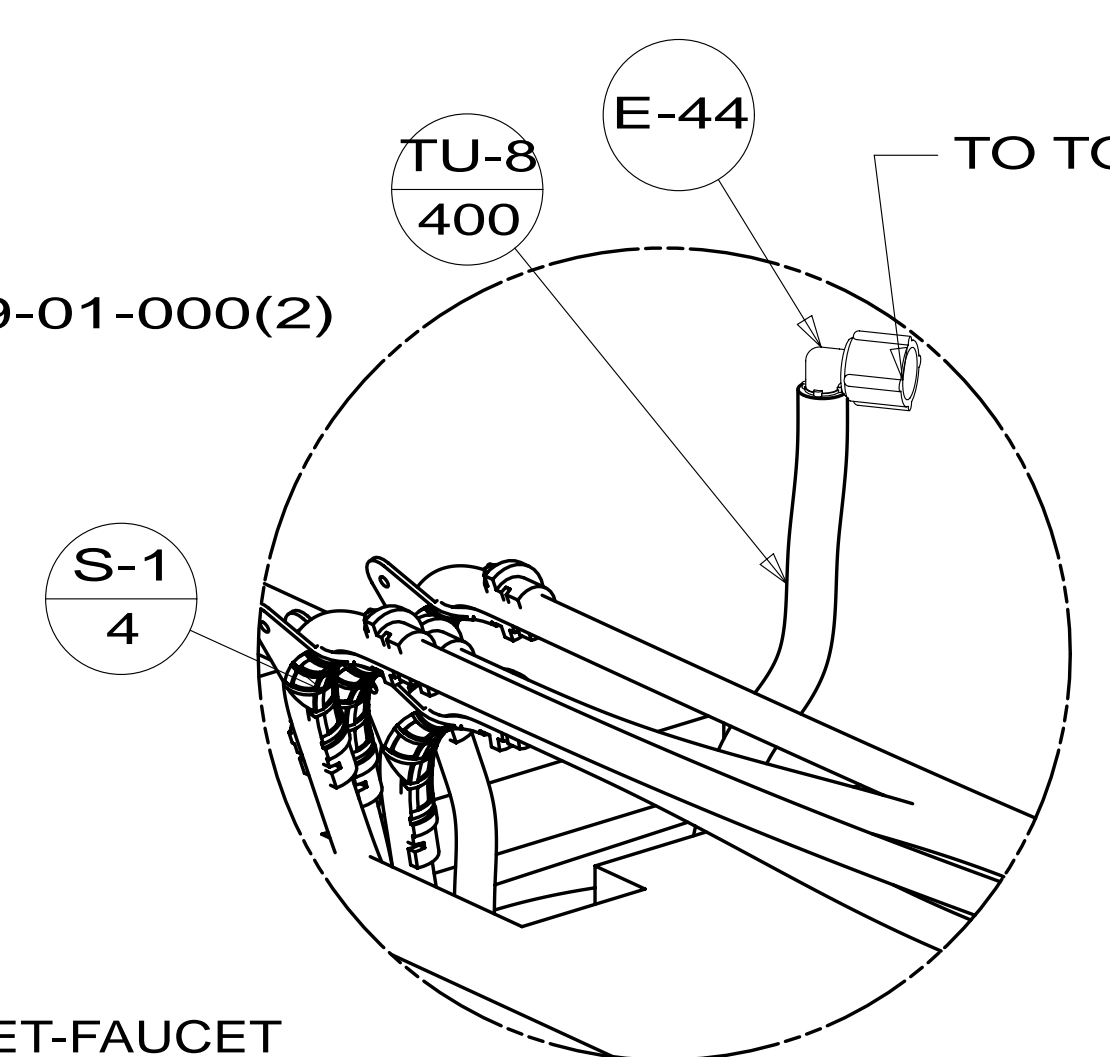
DETAIL U



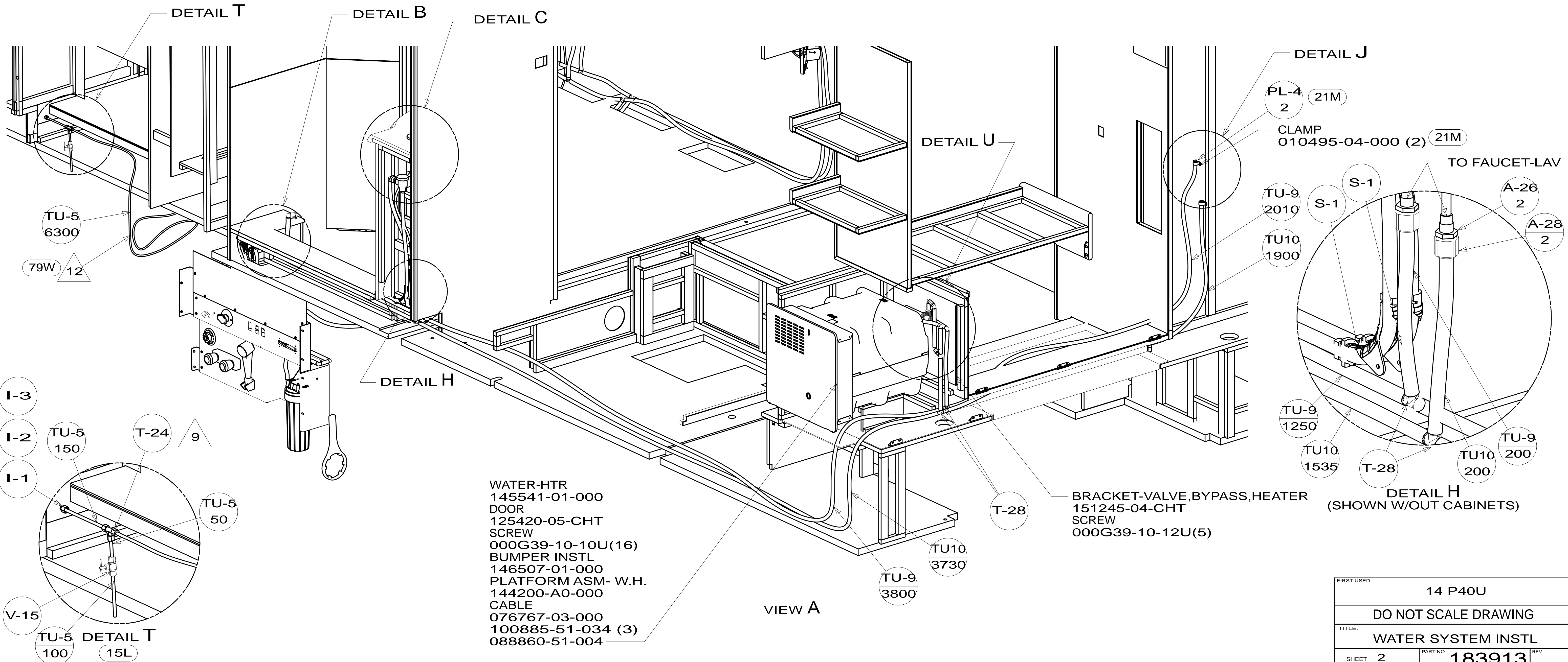
DETAIL C  
(SHOWN W/OUT CABINETS)



DETAIL J  
(21S)



DETAIL B  
(SHOWN W/OUT CABINETS)

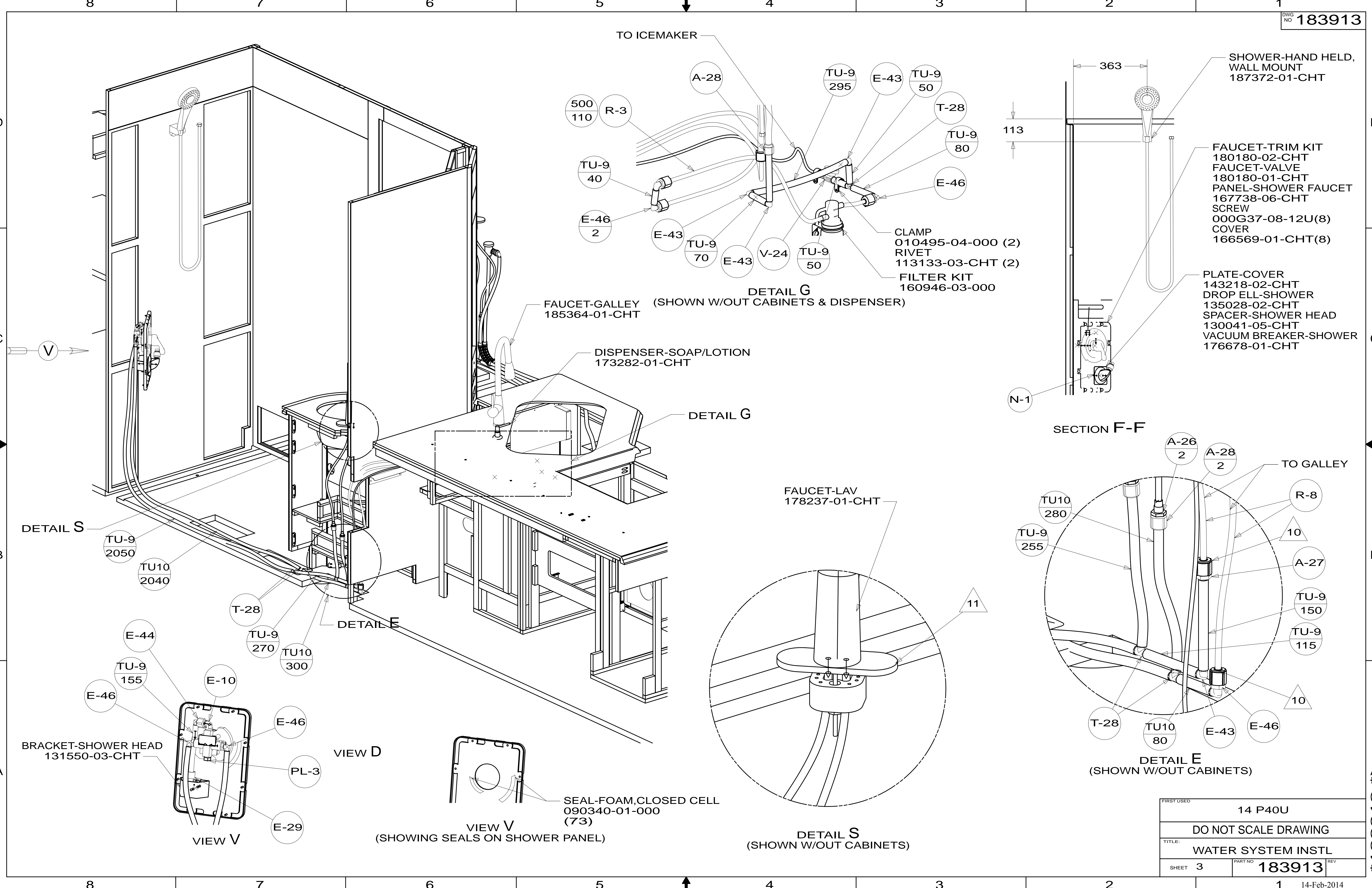


VIEW A

- WATER-HTR 145541-01-000
- DOOR 125420-05-CHT
- SCREW 000G39-10-10U(16)
- BUMPER INSTL 146507-01-000
- PLATFORM ASM- W.H. 144200-A0-000
- CABLE 076767-03-000
- 100885-51-034 (3)
- 088860-51-004

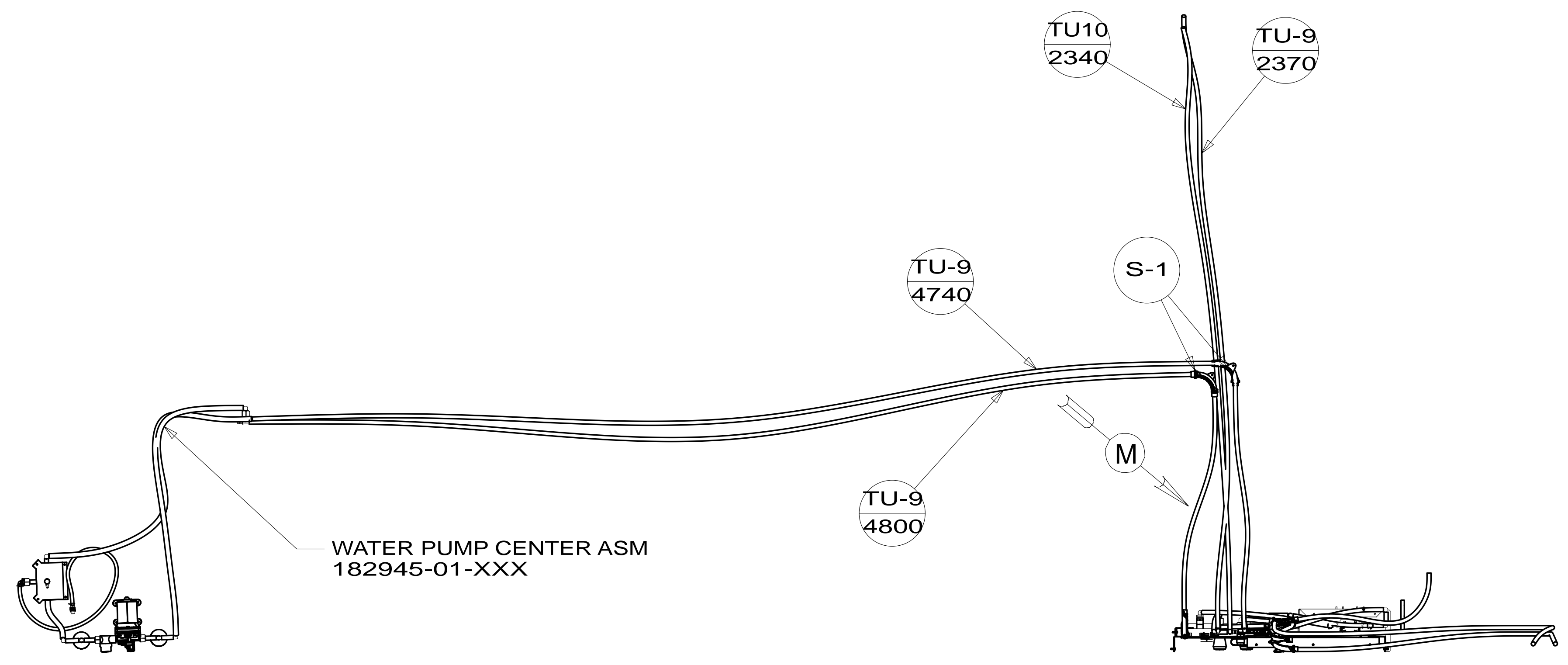
|            |                      |     |
|------------|----------------------|-----|
| FIRST USED | 14 P40U              |     |
| TITLE:     | DO NOT SCALE DRAWING |     |
| TITLE:     | WATER SYSTEM INSTL   |     |
| SHEET 2    | PART NO 183913       | REV |

\* 183913 \* A

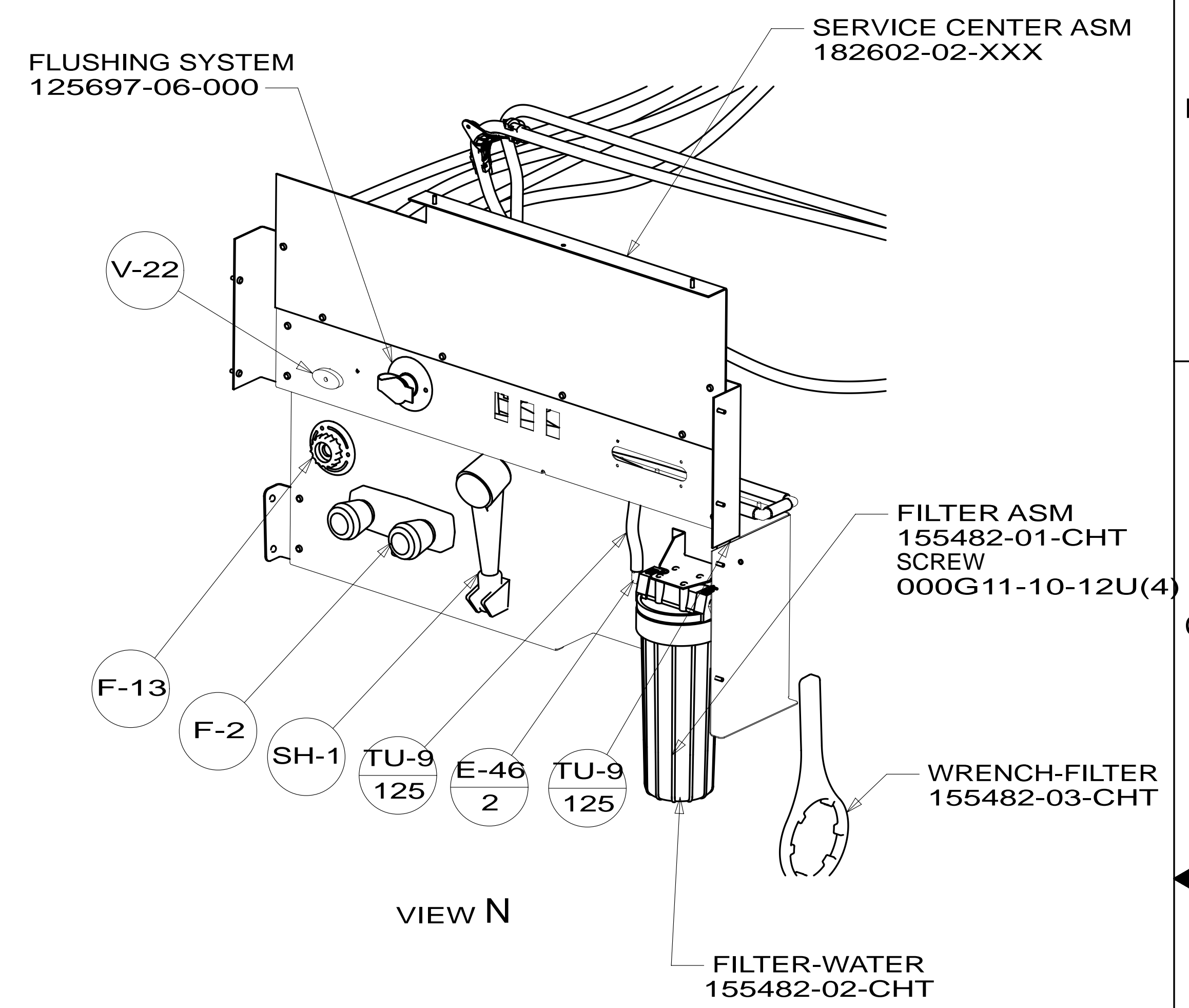


|             |                      |     |
|-------------|----------------------|-----|
| FIRST USED  | 14 P40U              |     |
| TITLE:      | DO NOT SCALE DRAWING |     |
| SHEET       | 3                    | REV |
| PART NO     | 183913               | REV |
| 14-Feb-2014 |                      |     |

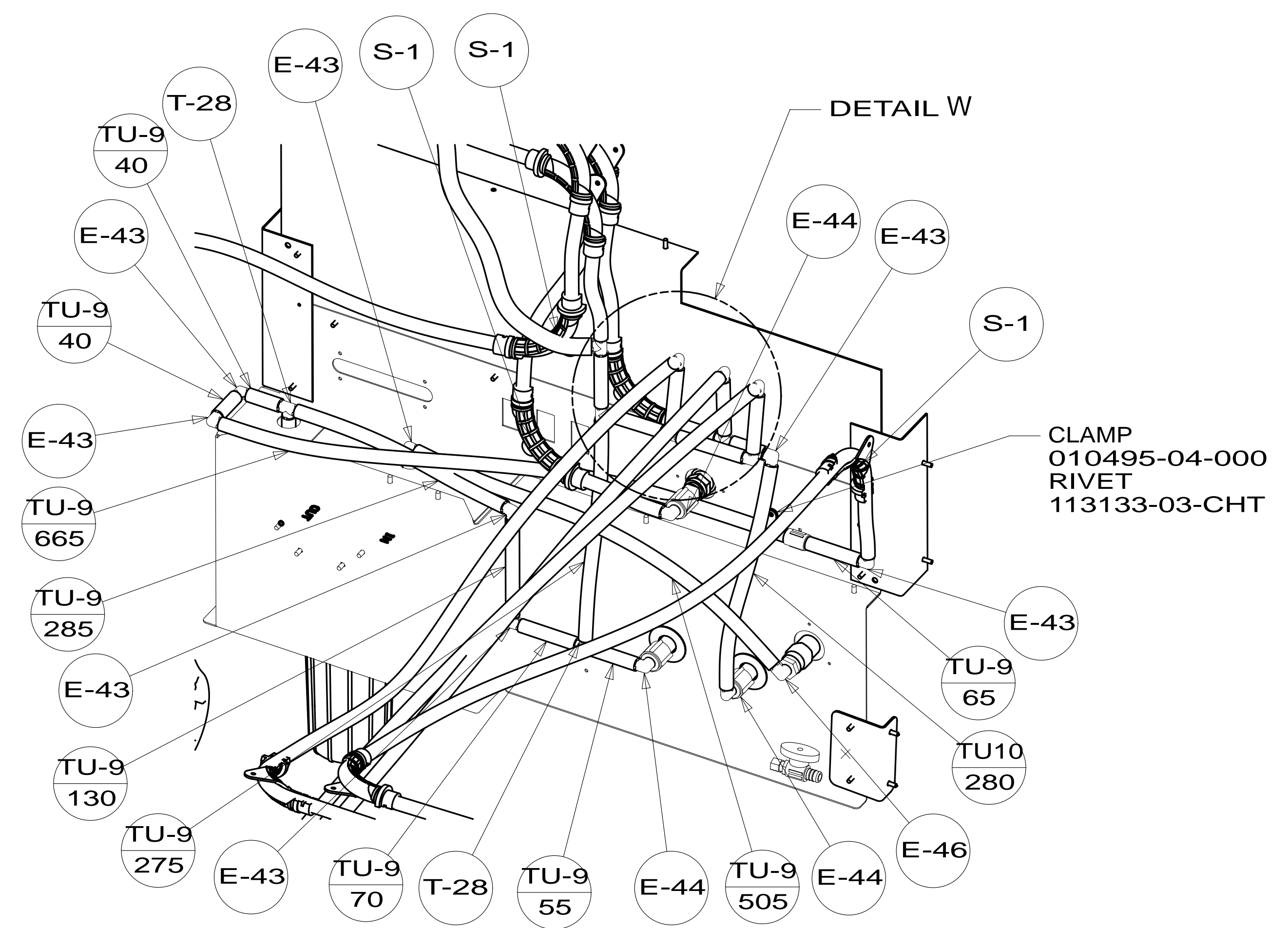
\* 183913 \*



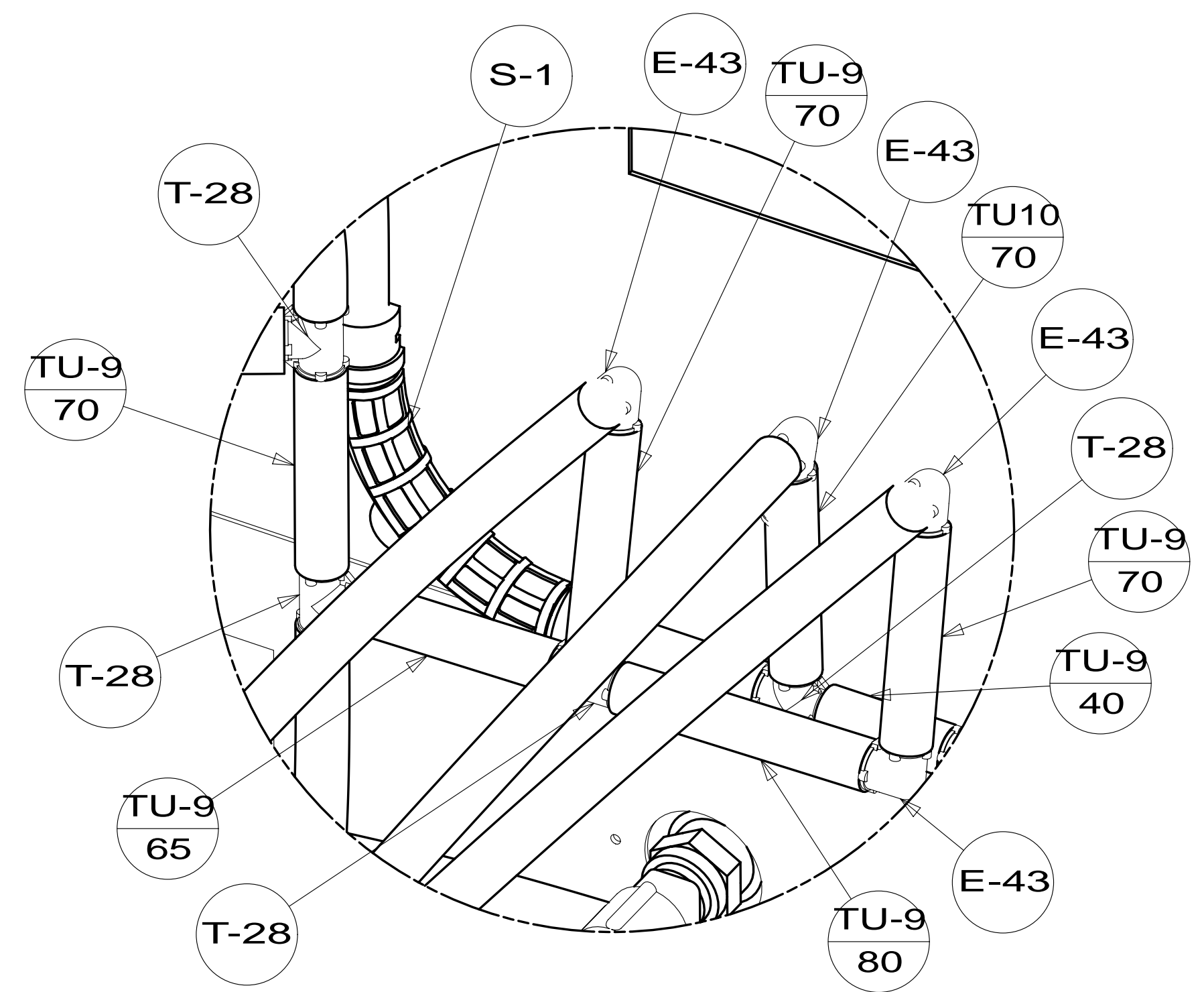
TOP VIEW SHOWING LINE UNDER FLOOR



VIEW N



VIEW M



DETAIL W

|            |                      |             |
|------------|----------------------|-------------|
| FIRST USED | 14 P40U              |             |
| TITLE:     | DO NOT SCALE DRAWING |             |
| SHEET 4    | PART NO 183913       | REV         |
|            |                      | 14-Feb-2014 |

\* 183913 \* A