

FRONT OF COACH

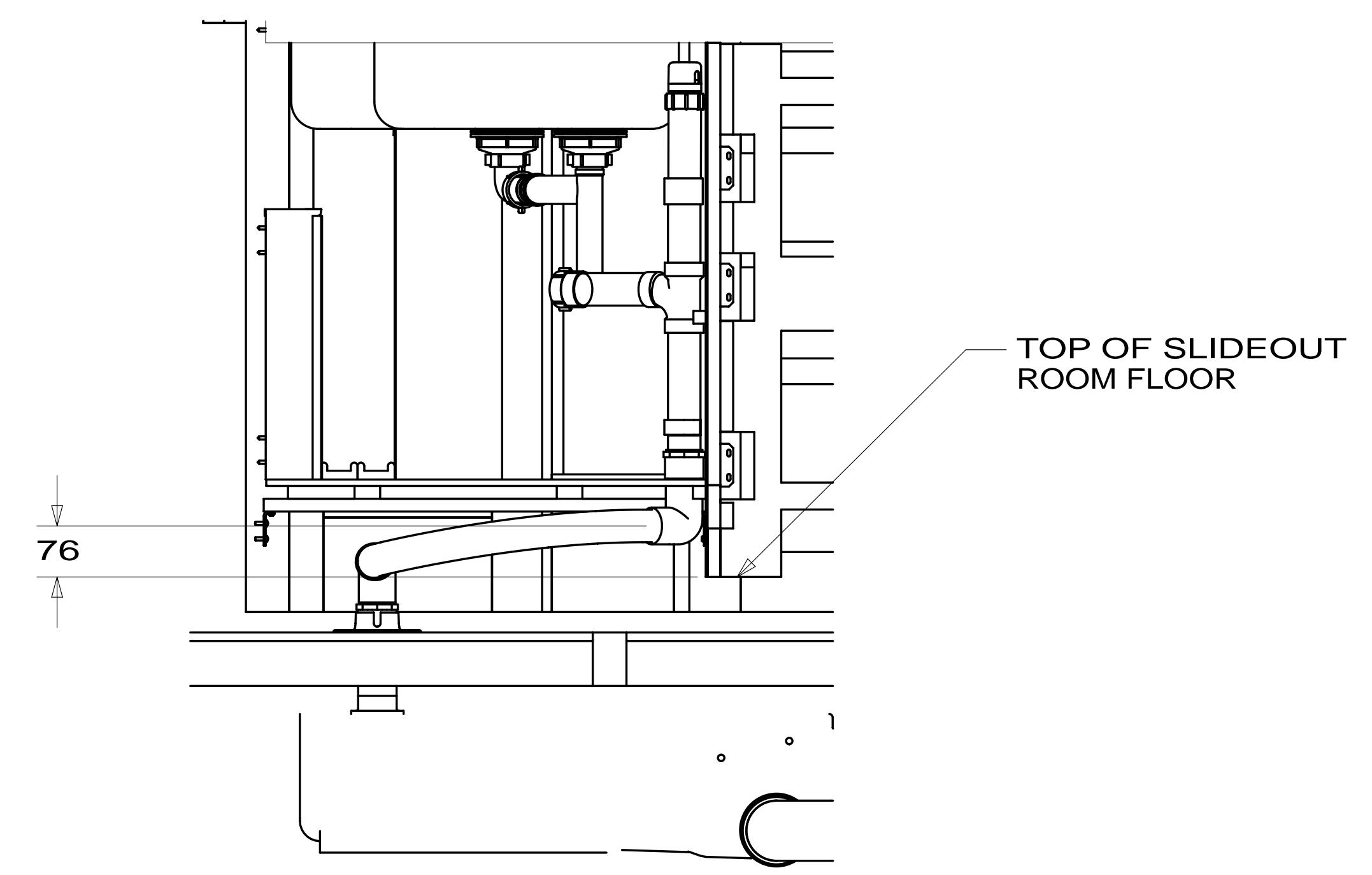
- 1D3 ENTERTAIN CENTR/EXT TV-DVD
- 1B1 CODES/STANDARDS-USA
- 265 CODES/STANDARDS-CSA/CMVSS

- NOTES:
1. SLOPE OF HORIZONTAL PIPING TO BE MINIMUM OF 3 PER 305 mm.
 2. SLOPE OF TRAP ARM MUST BE 6 PER 305 mm.
 3. ALL PIPE AND FITTINGS TO BE ASSEMBLED WITH SOLVENT 004020-01-000 (USA), 004020-02-000 (CAN)
 4. USE SMOOTH PLUMBERS PUTTY 167459-01-000 TO SEAL STRAINER (0.2 PER STRAINER).
 5. SEAL AROUND SHOWER WITH SILICONE.
 6. VENT PIPE MUST PROJECT 51 MIN AND 64 MAX ABOVE ROOF FOR PROPER FIT AND FUNCTION. ADD S-1 (116666-01-CHT SEAL-VENT PIPE) AROUND PIPE ON ROOF BEFORE CAP IS INSTALLED.
 7. APPLY PRIMER 126427-02-000 AND CEMENT 126427-01-000 BETWEEN ELBOW AND FLEX PIPE.
 8. SECURE DRAINAGE PIPES TO CABINET USING WIRE TIE 108046-02-000, AND SCREW 000G67-10-12U AT INTERVALS OF NOT MORE THAN 4 FEET APART.

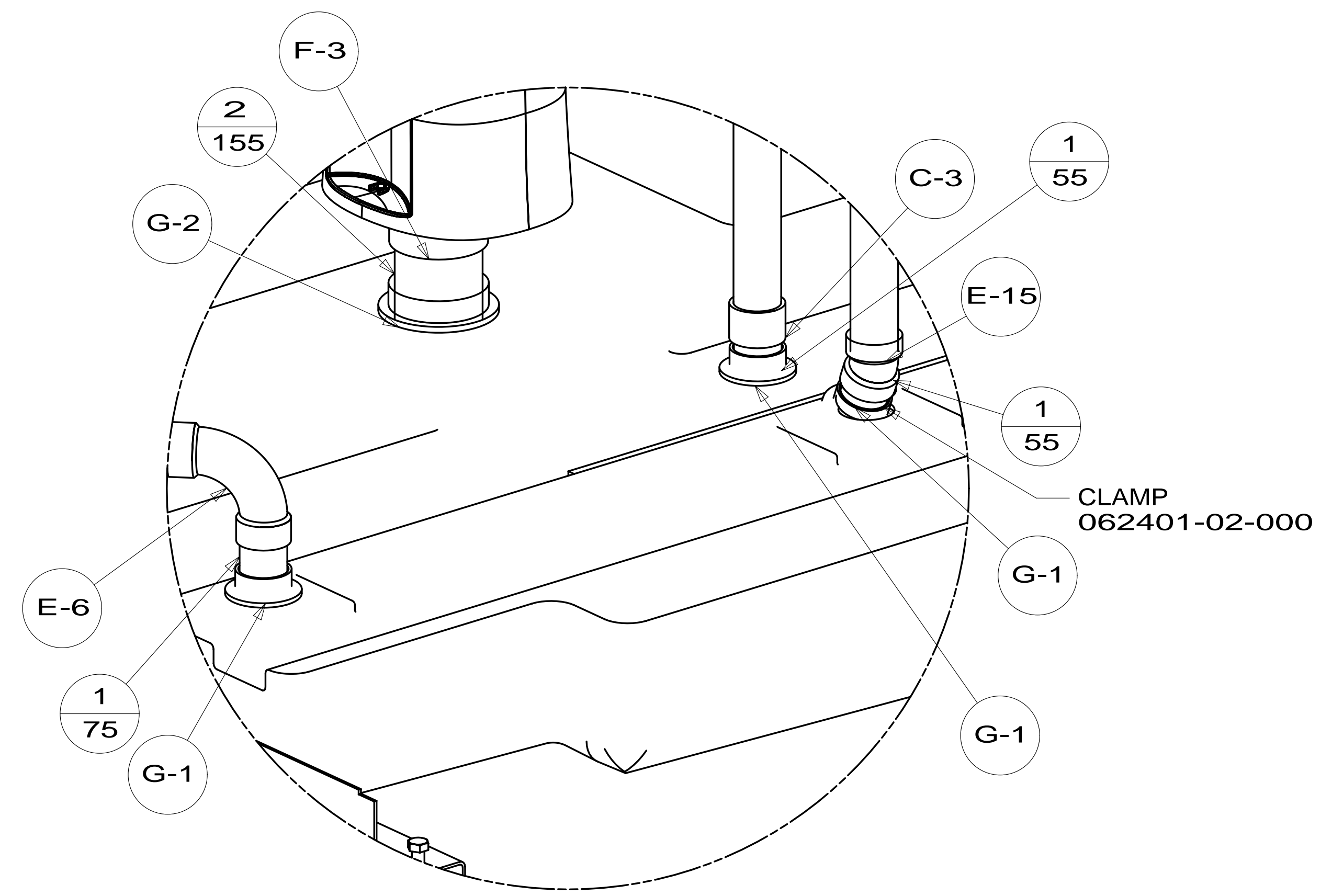
FOR DRAINAGE CALLOUTS SEE DWG NO 116229-01-000

		COPYRIGHT 2013 WINNEBAGO INDUSTRIES, INC.
DTR	ORIG. DATE	
CHKR	ALL DIMENSIONS ARE IN MILLIMETERS	
P.E.		
M.E.	FIRST USED	
DSNR	14 J32H	
UNSPECIFIED TOLERANCES ARE:		
WHOLE DIM (X)	: 3	
ONE-PLACE (X.X)	: 1.5	
TWO-PLACE (X.XX)	: 0.50	
ANGLE	: 1°	
THIRD ANGLE PROJECTION		
DO NOT SCALE DRAWING		REFER TO ES0018 FOR FASTENER TIGHTENING GUIDELINES
TITLE: DRAINAGE SYSTEM INSTL		
SHEET 1 OF 4	PART NO 185649	REV
REF: 1	06-Nov-2013	

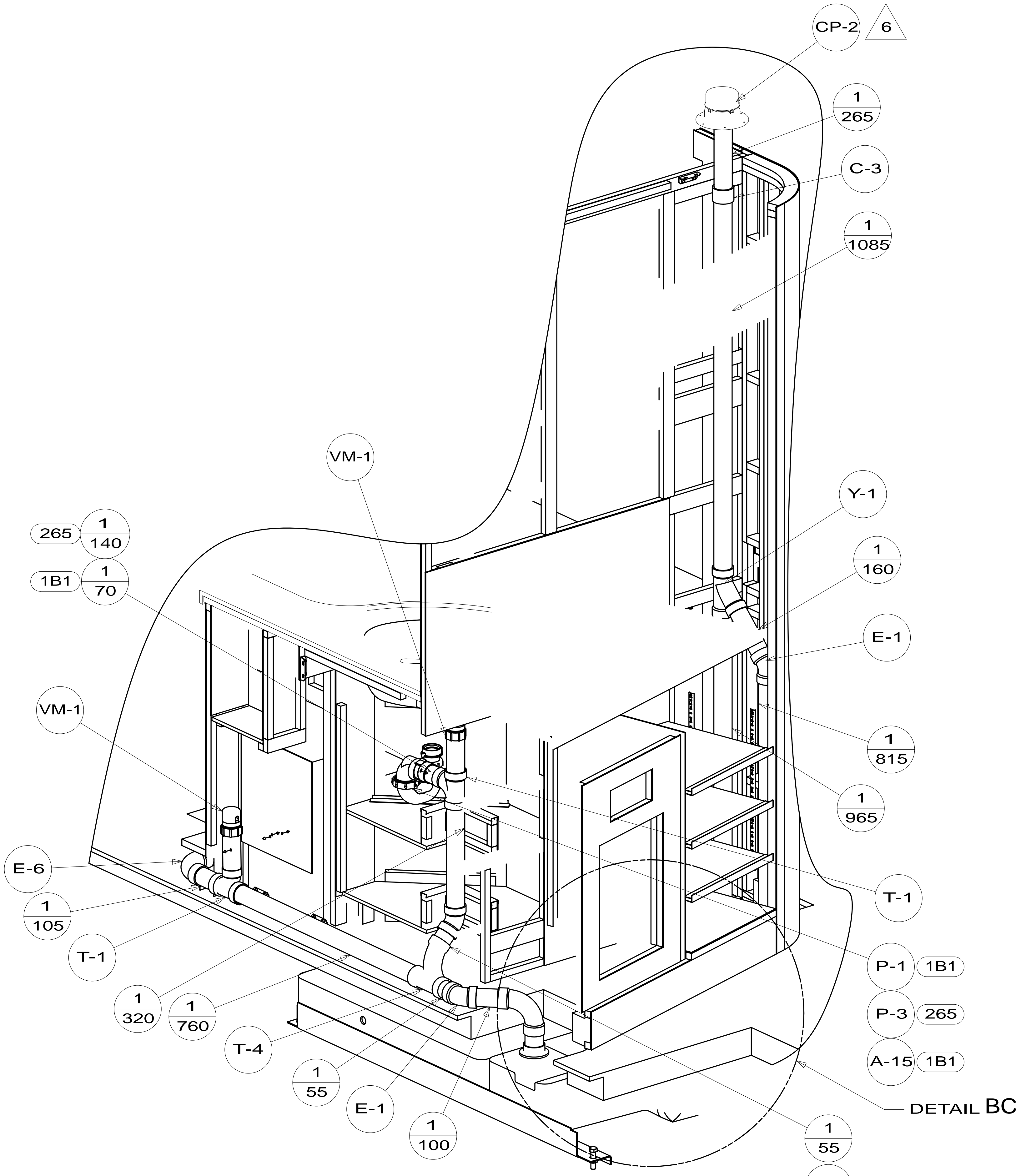
* 185649 *



VIEW BB



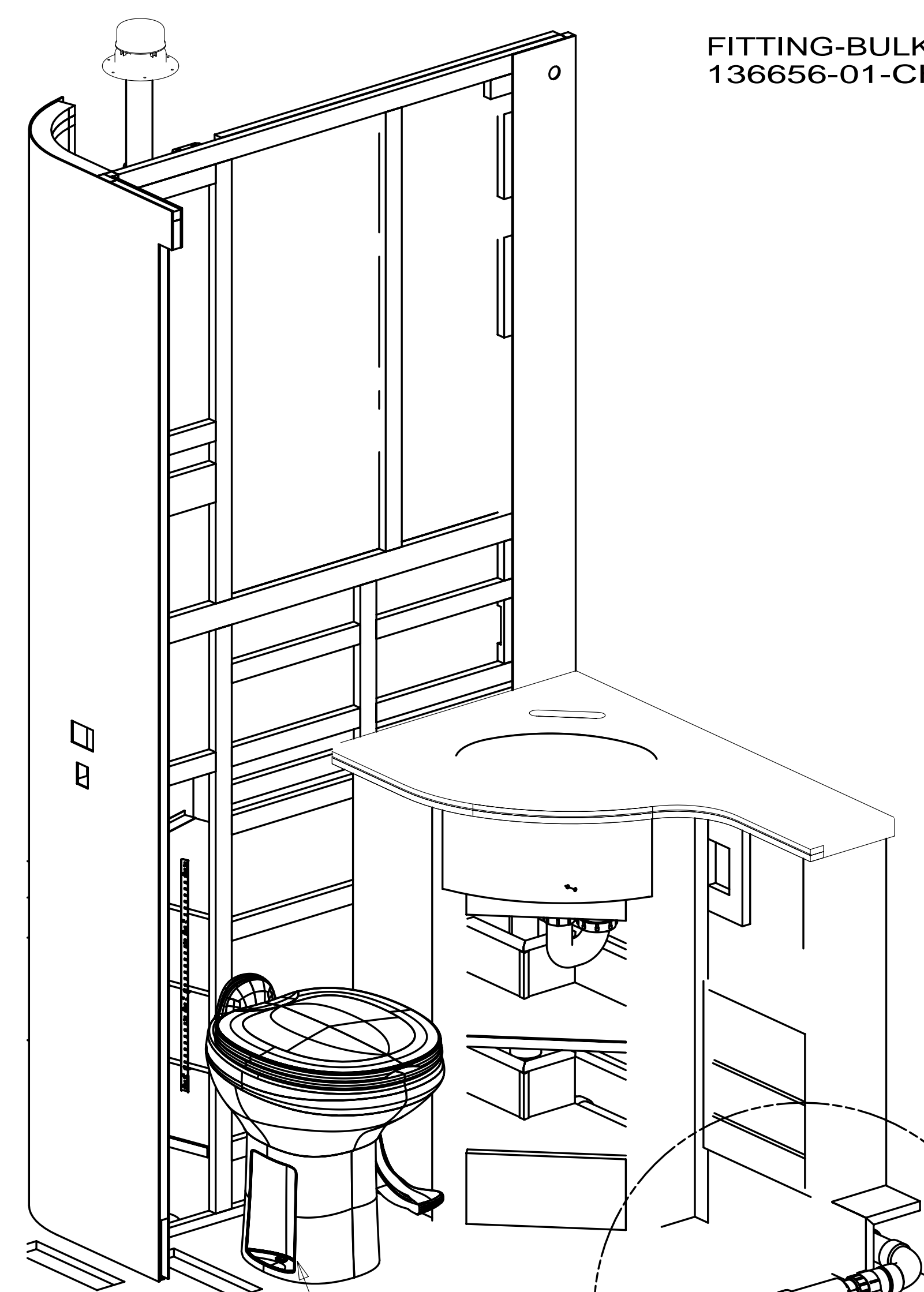
DETAIL BC
(SHOWN W/OUT FLOOR & CABINETS)



VIEW BA

FIRST USED	14 J32H	
TITLE:	DO NOT SCALE DRAWING	
TITLE:	DRAINAGE SYSTEM INSTL	
SHEET 2	PART NO	185649
	REV	
06-Nov-2013		

* 185649 * A

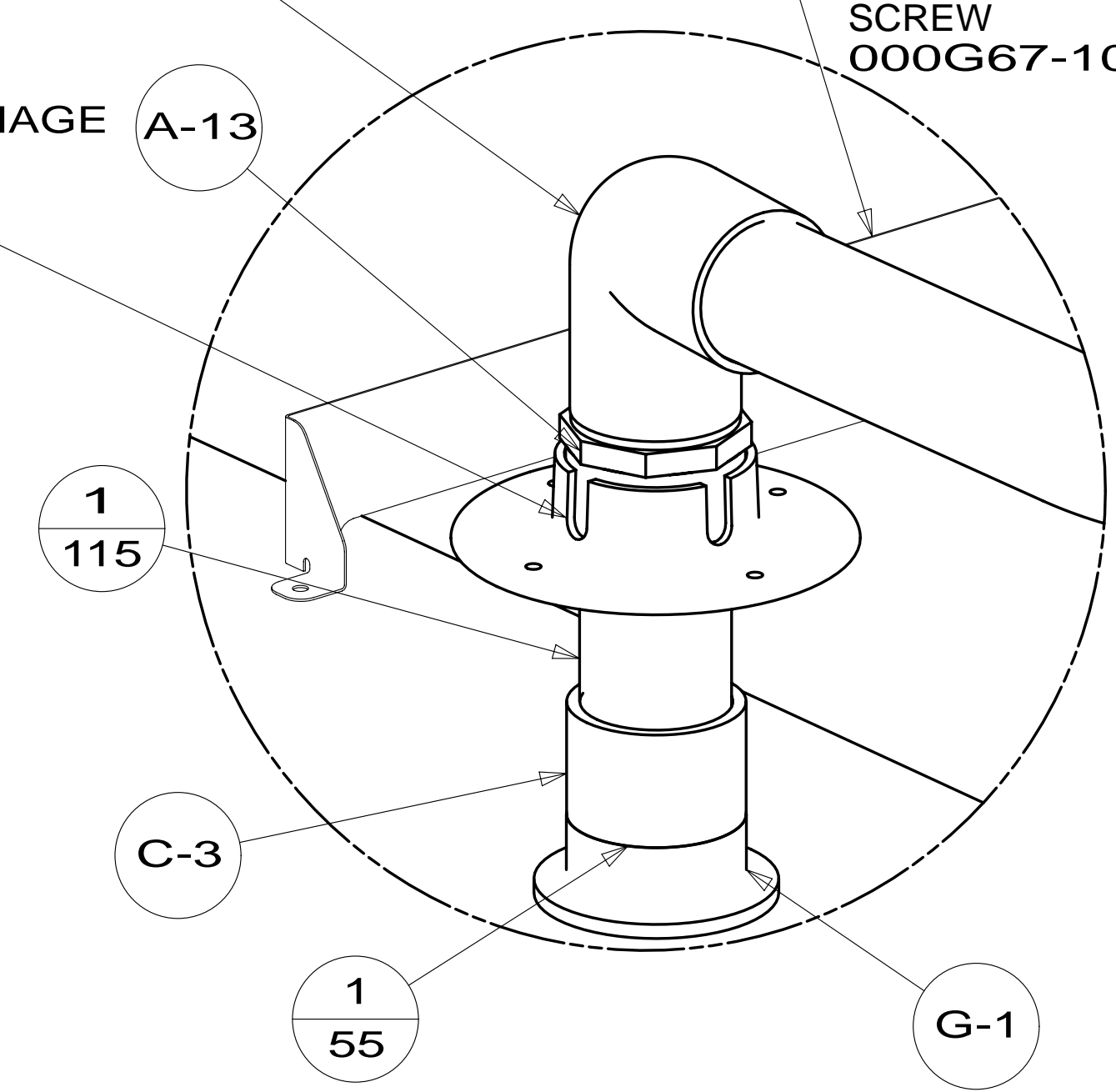


TOILET
160815-01-CHT
SCREW
087721-01-000 (8)

ELBOW
7 136111-01-000

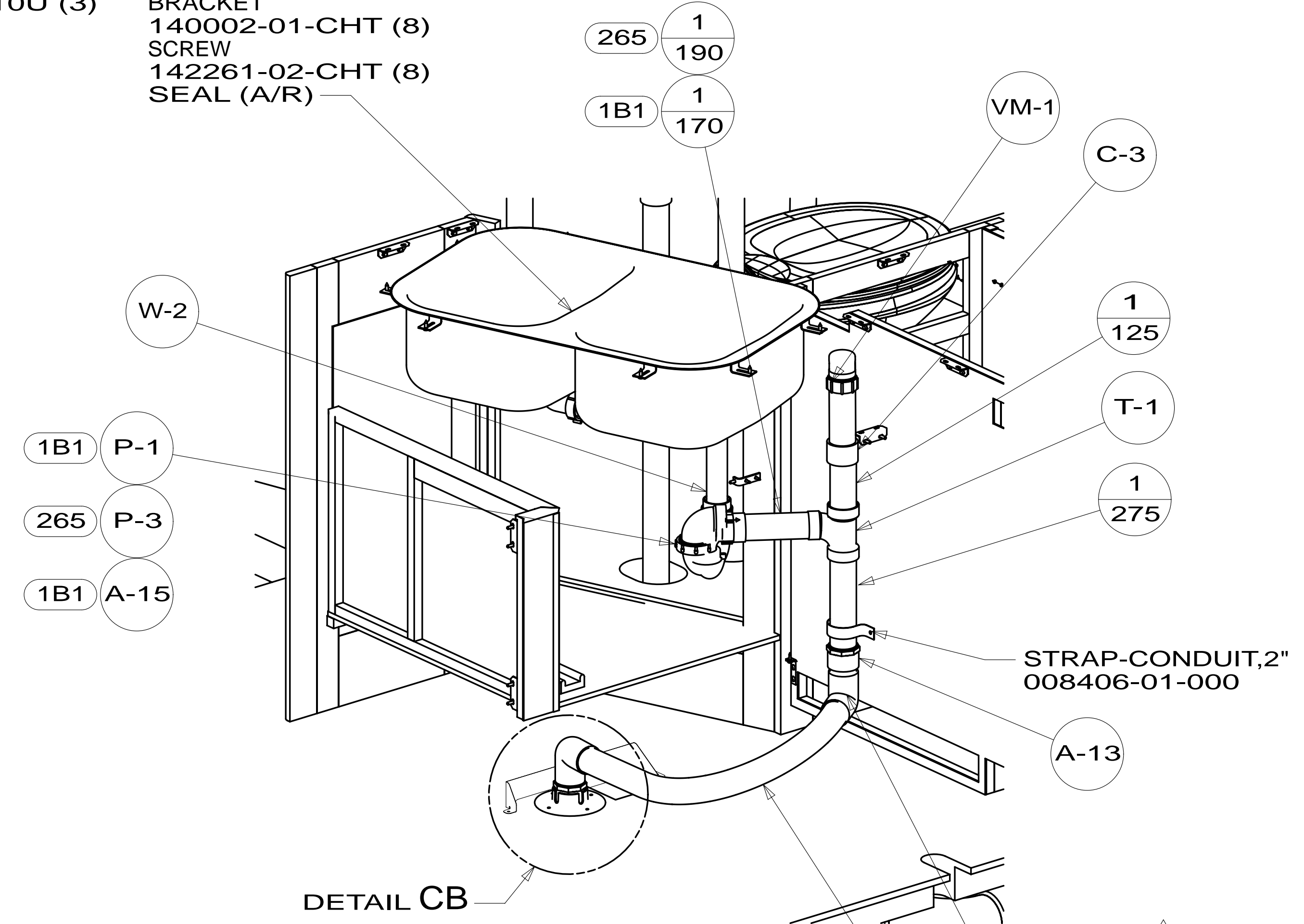
BRACKET-SHIELD
187993-01-CHT
SCREW
000G67-10-10U (3)

FITTING-BULKHEAD,DRAINAGE
136656-01-CHT



DETAIL CB
(SHOWN W/OUT FLOOR & CABINETS)

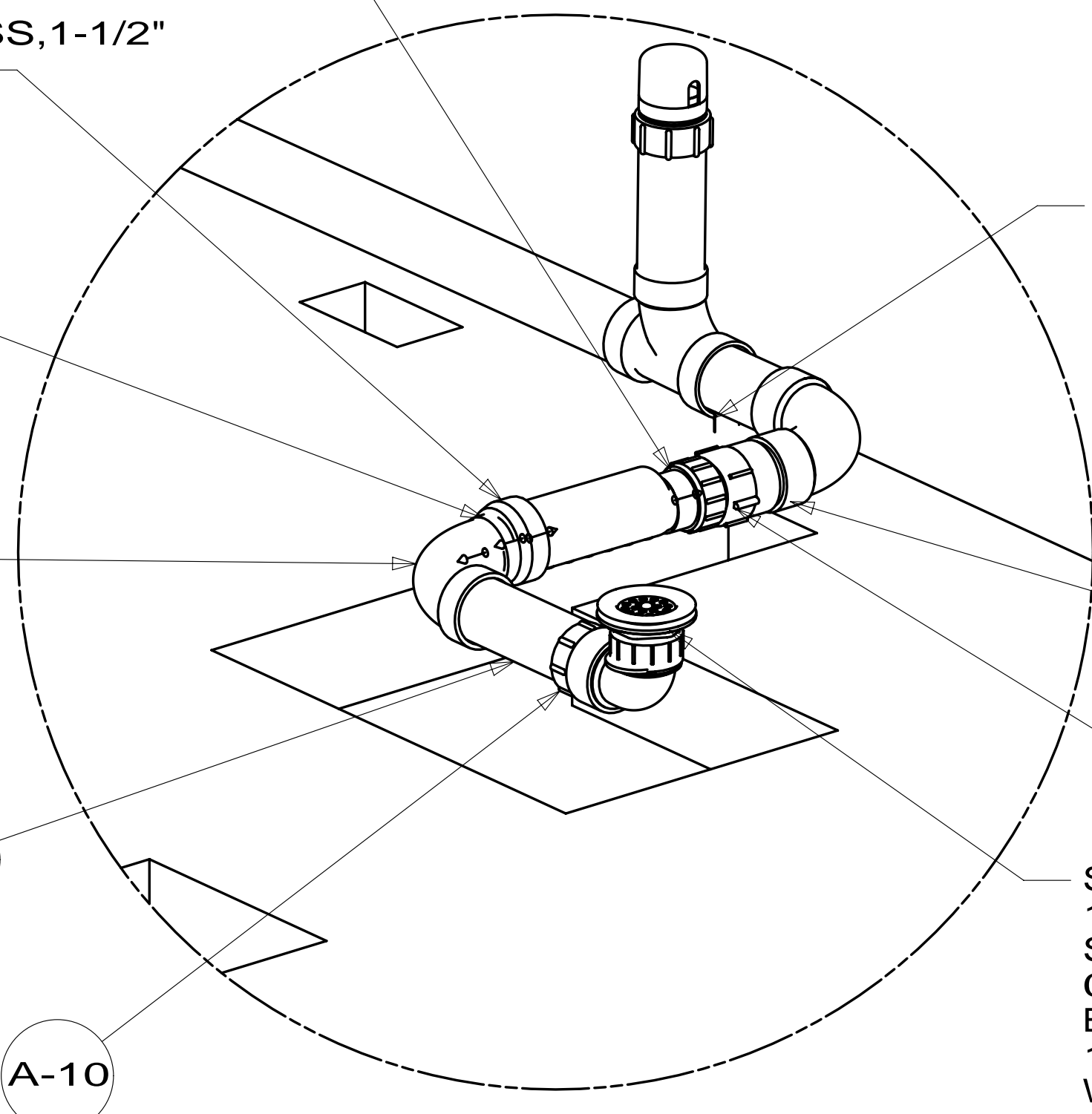
SINK
173783-01-CHT
STRAINER
092303-01-000 (2) 4
BRACKET
140002-01-CHT (8)
SCREW
142261-02-CHT (8)
SEAL (A/R)



VIEW CC
(SHOWN W/OUT COUNTERTOP)

TRAP-WATERLESS,1-1/2"
165406-01-000

DETAIL CD



DETAIL CD
(SHOWN W/OUT CABINETS)

STRAP-CONDUIT,2"
008406-01-000

SHOWER-FIBERGLASS
182932-03-CHT
STRAINER
066440-01-000
ELBOW
165406-02-000
WASHER-RUBBER
127440-02-CHT

FIRST USED	14 J32H	
DO NOT SCALE DRAWING		
TITLE: DRAINAGE SYSTEM INSTL		
SHEET 3	PART NO 185649	REV
		06-Nov-2013

* 185649 * A

BRACKET-TANK,HOLDING
162818-01-CHT
BOLT
000C12-08-32U (2)

3483

TANK-HOLDING
161396-02-CHT

FOAM
100619-05-000
200 X 600

FOAM
100619-05-000
200 X 600

FOAM
100619-04-000
100 X 200

TANK-HOLDING
161397-02-CHT

2464

PLATFORM-HOLDING TANK
126714-08-000

N-5

C-2

2
535

HOLDER-RING
141443-01-CHT

PLATFORM-HOLDING TANK
126714-42-000

BRACKET-ANGLE,W/HOLES
094756-02-CHT

N-3

C-2

2
115

E-13

2
275

V-11

H-1

2
85

E-11

VEHICLE

FRONT
AXLE

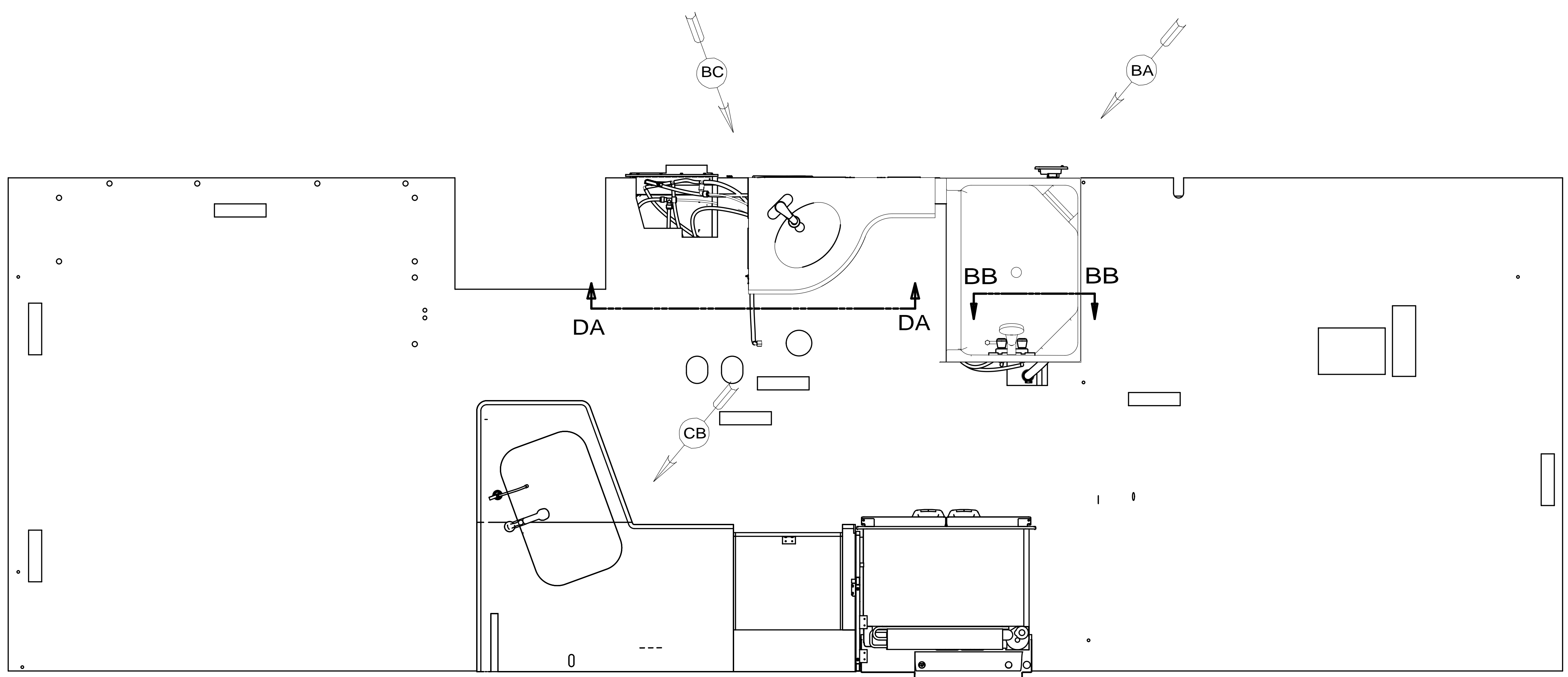
1222

705

DATUM

TOP VIEW
(SHOWING TANKS AND DRAINS)

FIRST USED	14 J32H		
TITLE:	DO NOT SCALE DRAWING		
TITLE:	DRAINAGE SYSTEM INSTL		
SHEET 4	PART NO	185649	REV



- 144 REFRIGERATOR-DOUBLE DOOR
- 79W REFRIGERATOR - 4 DOOR
- 29B WATER PURIFIER
- 1B2 WTR HTR-10 GAL/ELEC/LP/MTRAIID
- 53E WATER SYS WINTERIZATION PKG

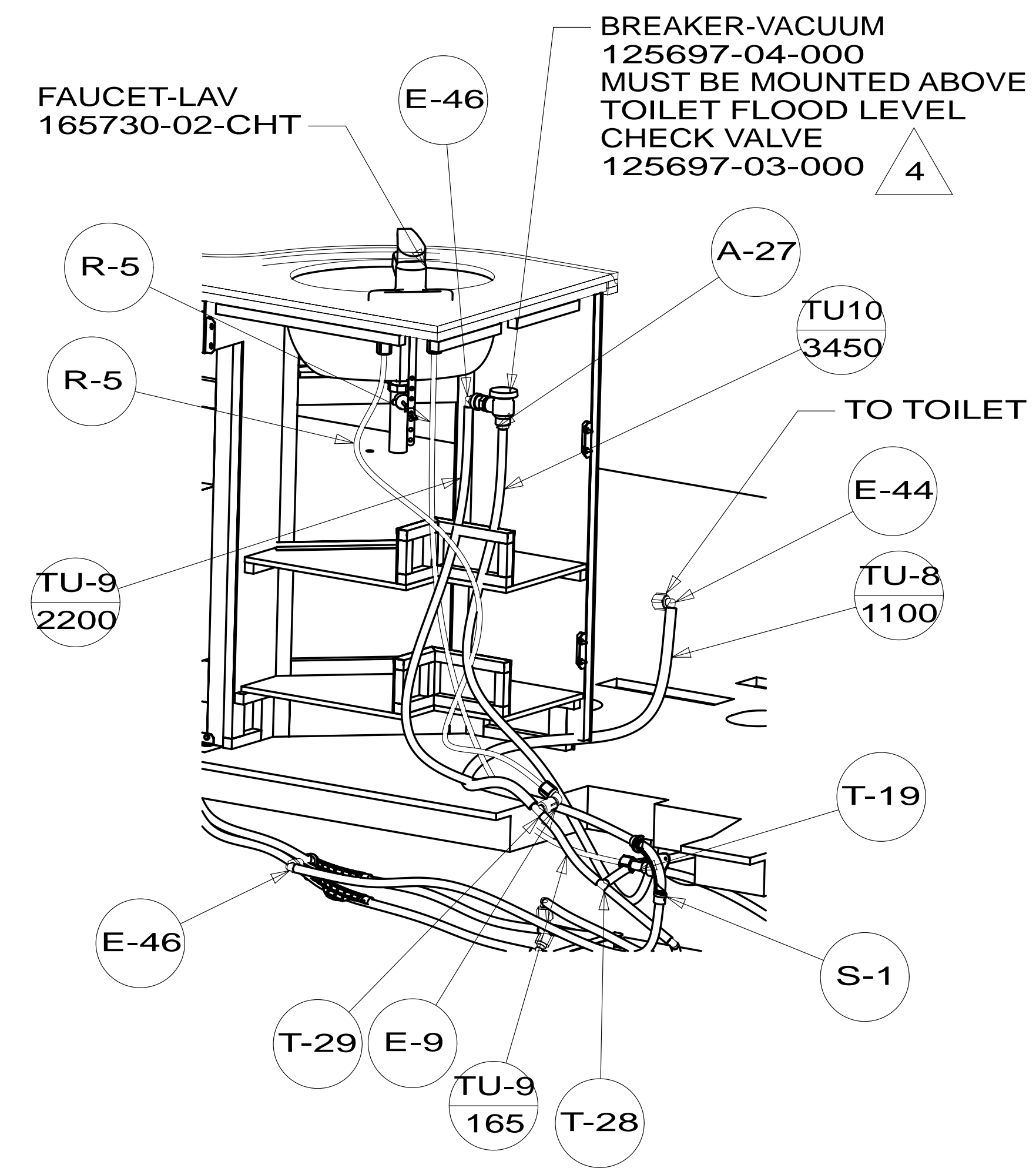
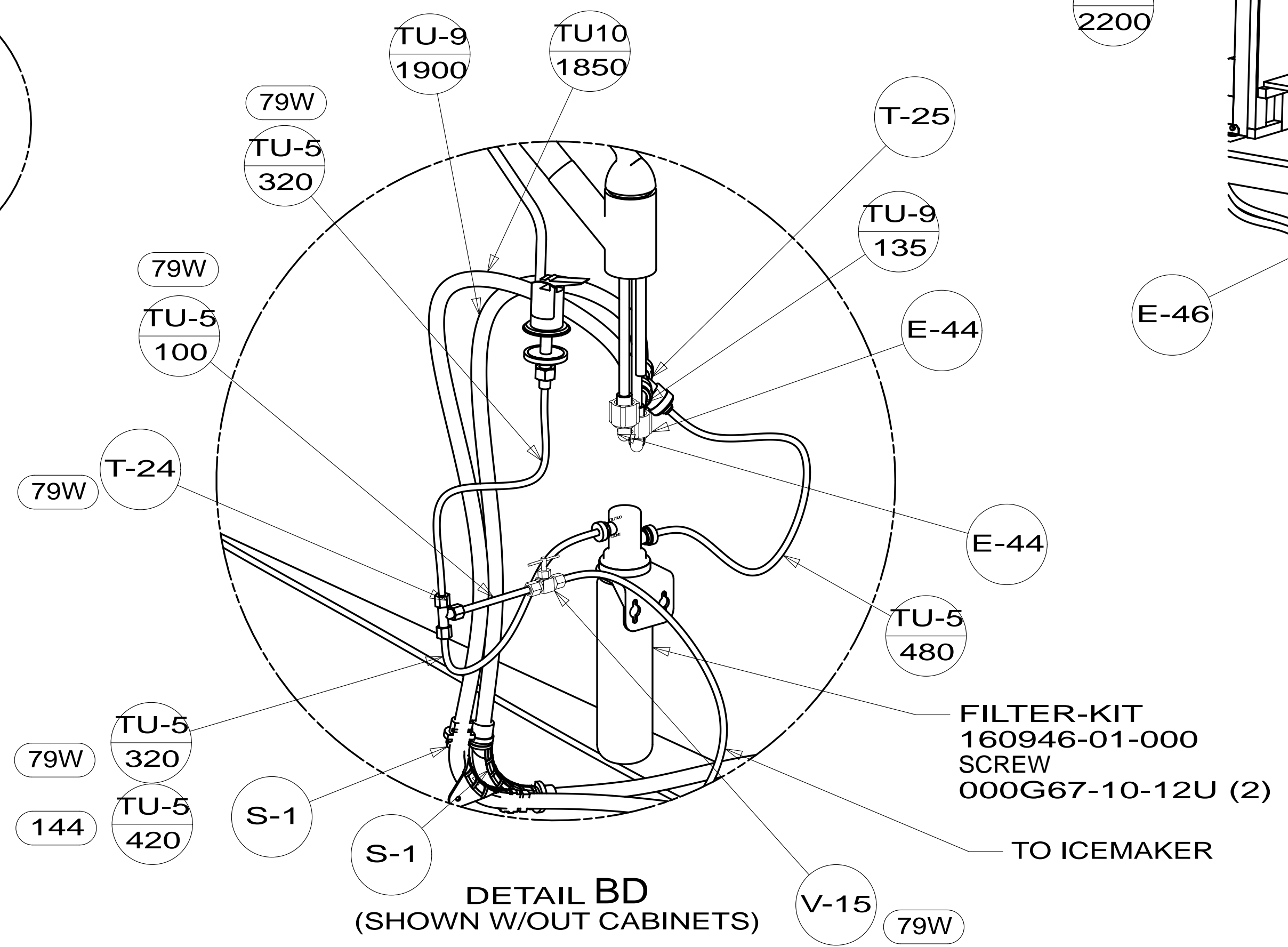
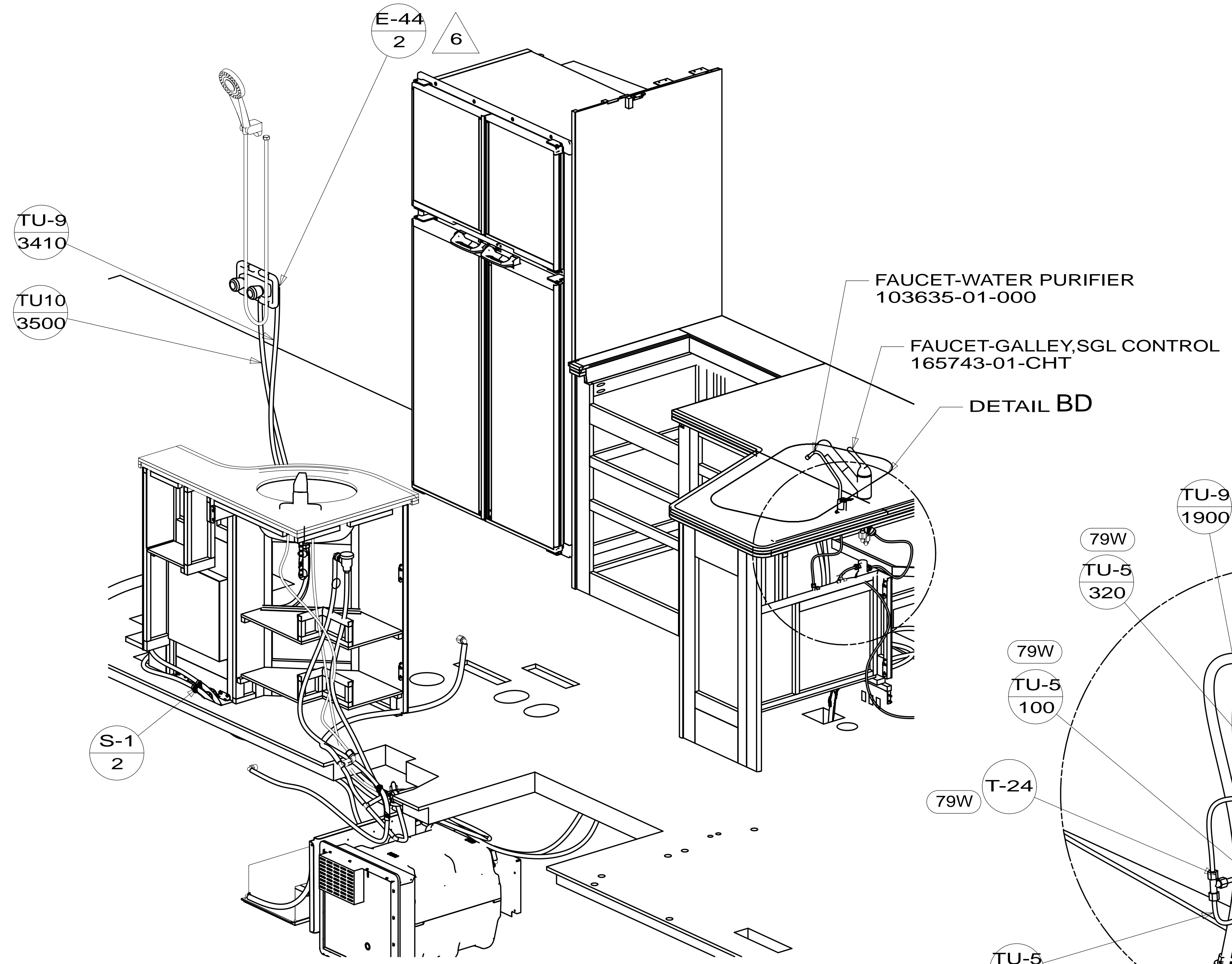
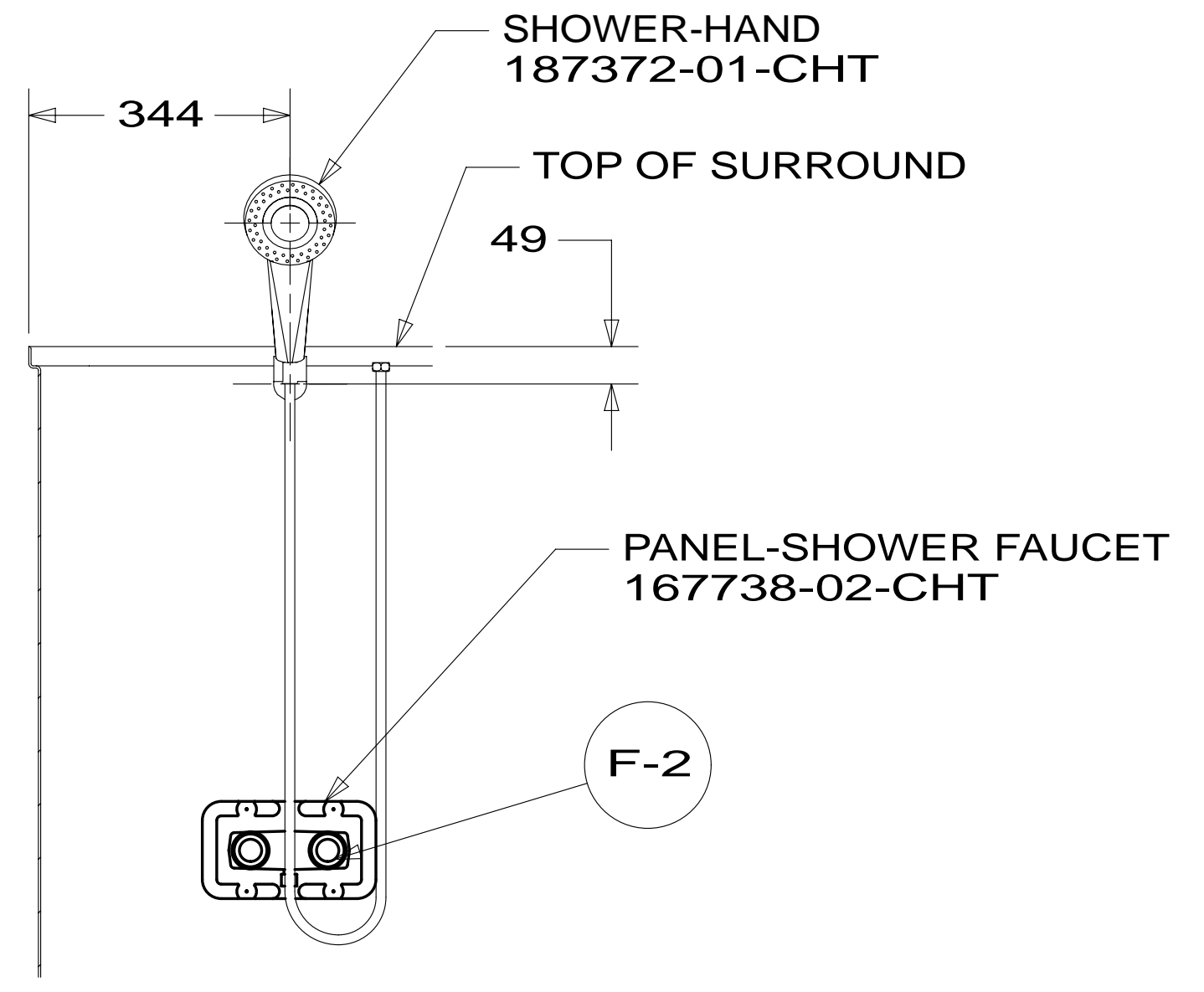
9. ALL CRIMP FITTINGS TO 3/4" PEX TUBING REQUIRE 3/4" CLAMP 140171-05-000.
8. ALL CRIMP FITTINGS TO 1/2" PEX TUBING REQUIRE 1/2" CLAMP 140171-03-000.
7. ALL CRIMP FITTINGS TO 5/8" FLEX TUBING REQUIRE 5/8" CLAMP 140171-04-000.
- 6 LABEL HOT AND COLD SUPPLY TUBES AND TAPE FITTING TO TUBE BEFORE CABINET SET TO PREVENT MOVEMENT.
- 5 ADD PIPE WRAP (LADDER SCRAP 110157-02-000) INSULATION.
- 4 ADD TEFLON TAPE 010405-02-000.
3. ALL TUBING TO BE SECURED AT 1200 INTERVALS MAXIMUM WITH CLAMP 010495-01-000 AND SCREW 000G67-10-12U OR EQUIVALENT.
2. TUBING TO BE INSTALLED WITH SUFFICIENT SLOPE TO PROVIDE DRAINAGE TO NEAREST VALVE.
1. PLASTIC FITTINGS TO BE SEALED WITH SEALANT 084456-01-000.

NOTES:

FOR WATER CALLOUTS SEE DWG NO 116230-01-000

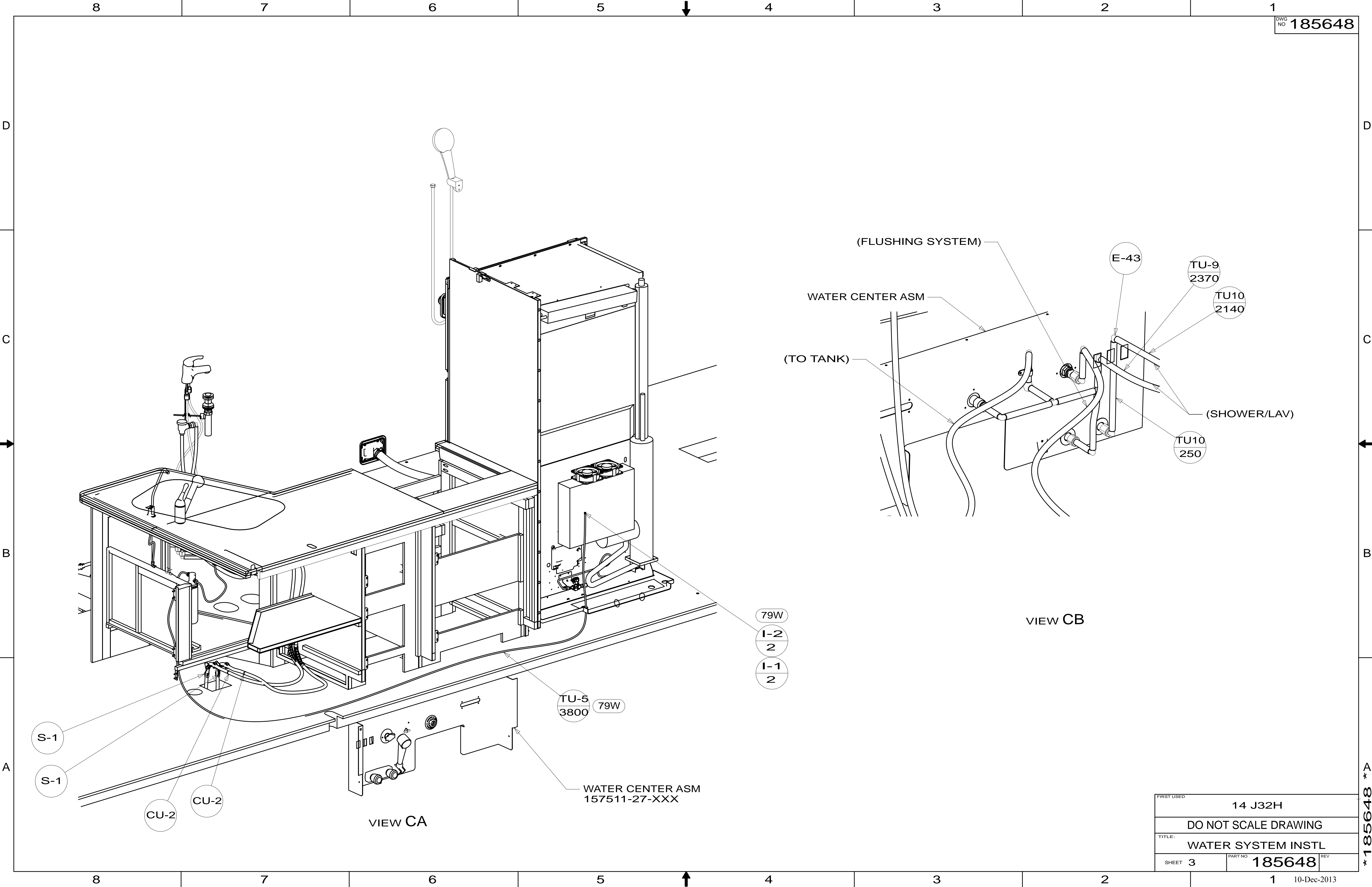
		COPYRIGHT 2013 WINNEBAGO INDUSTRIES, INC.
DFTR	ORIG. DATE	
CHKR	ALL DIMENSIONS ARE IN MILLIMETERS	
P.E.		
M.E.	FIRST USED	
DSNR	14 J32H	
UNSPECIFIED TOLERANCES ARE:		
WHOLE DIM (X)	: 3	MATERIAL:
ONE-PLACE (X.X)	: 1.5	
TWO-PLACE (X.XX)	: 0.50	
ANGLE	: 1°	
THIRD ANGLE PROJECTION		
DO NOT SCALE DRAWING		REFER TO ES0018 FOR FASTENER TIGHTENING GUIDELINES
TITLE: WATER SYSTEM INSTL		
SHEET 1 OF 5	PART NO 185648	REV
REF:	1	10-Dec-2013

* 185648 * A



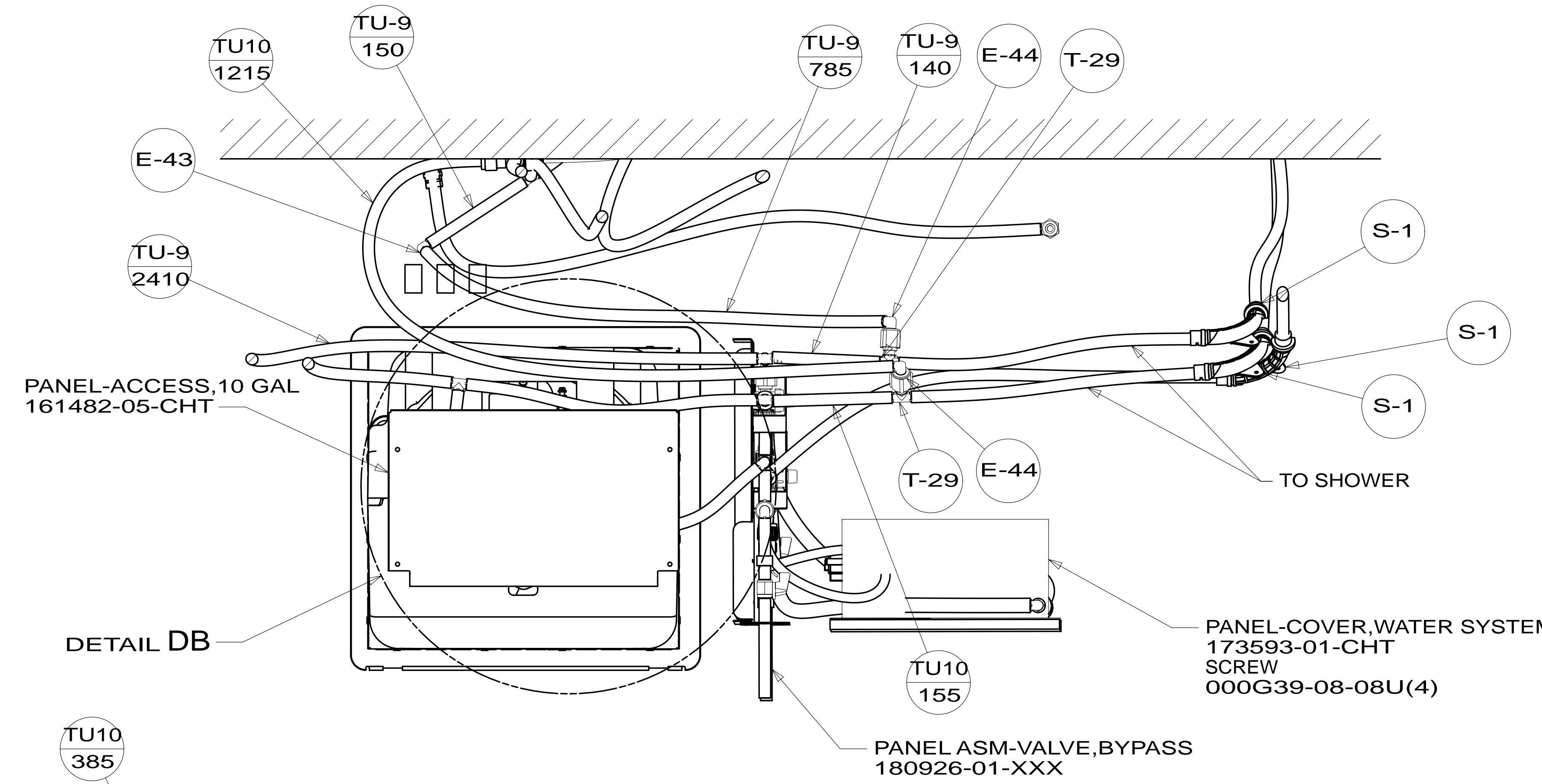
FIRST USED	14 J32H	
DO NOT SCALE DRAWING		
TITLE: WATER SYSTEM INSTL		
SHEET 2	PART NO 185648	REV
		10-Dec-2013

* 185648 * A

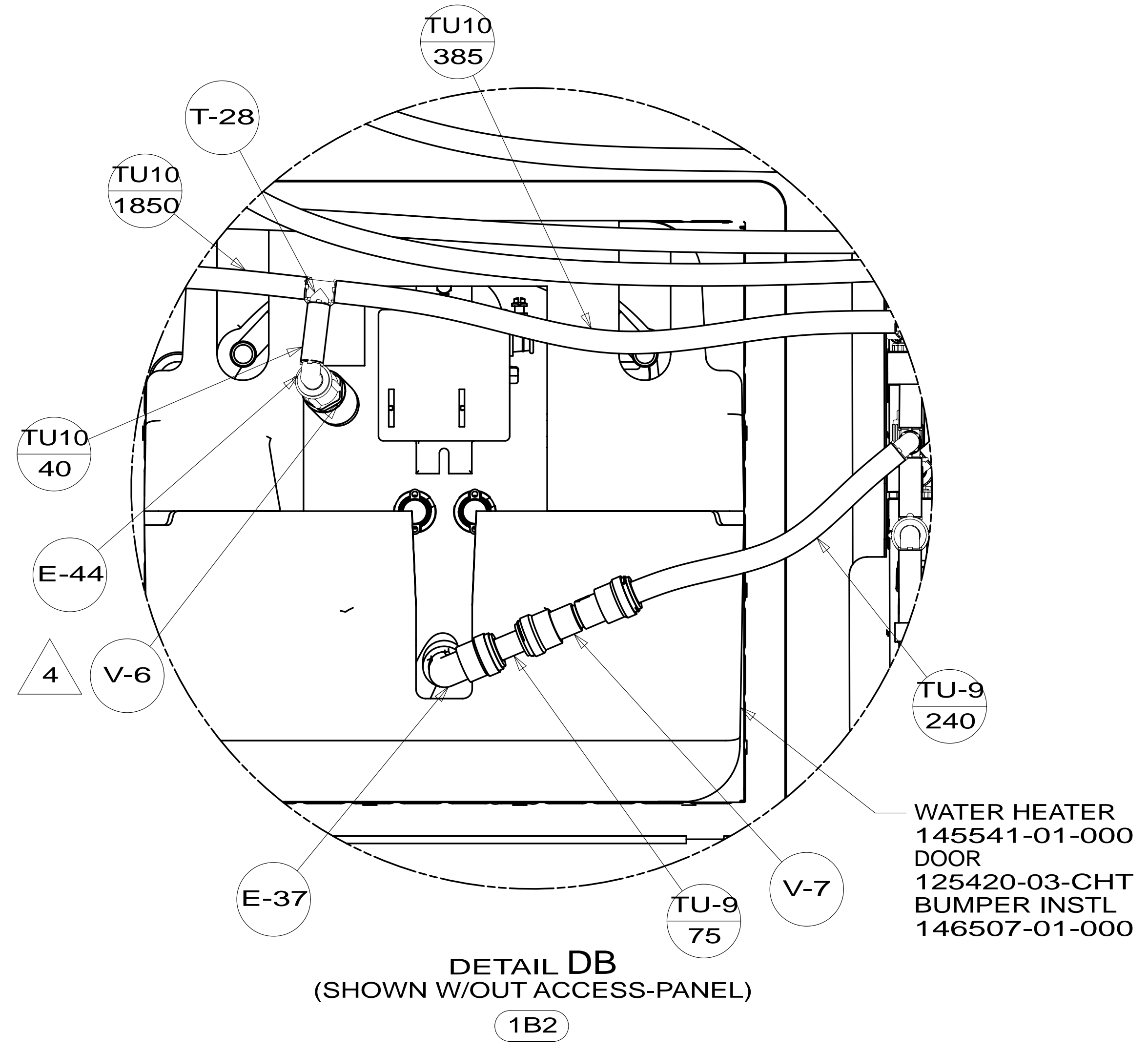


FIRST USED	14 J32H	
TITLE:	DO NOT SCALE DRAWING	
TITLE:	WATER SYSTEM INSTL	
SHEET 3	PART NO 185648	REV
		10-Dec-2013

* 185648 * A



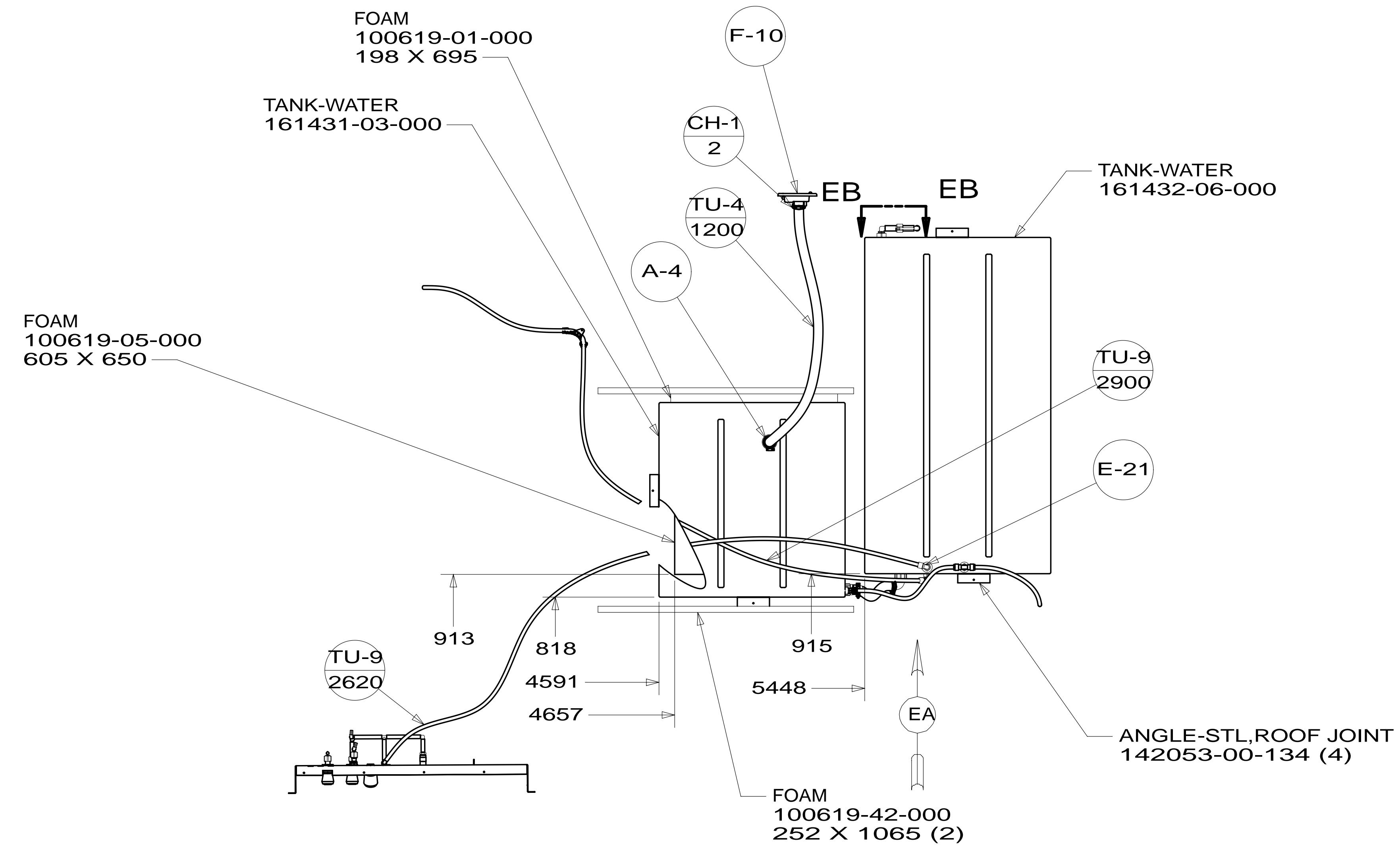
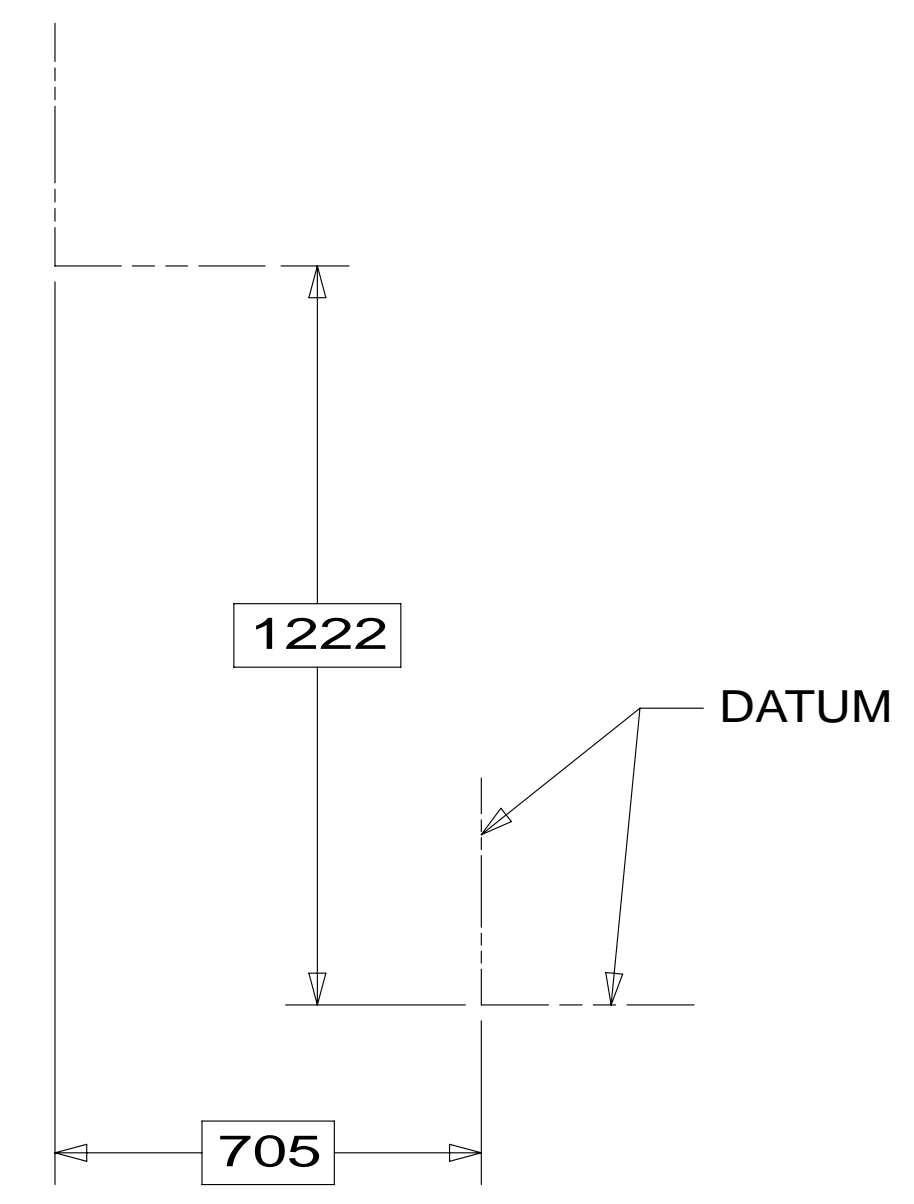
SECTION DA-DA



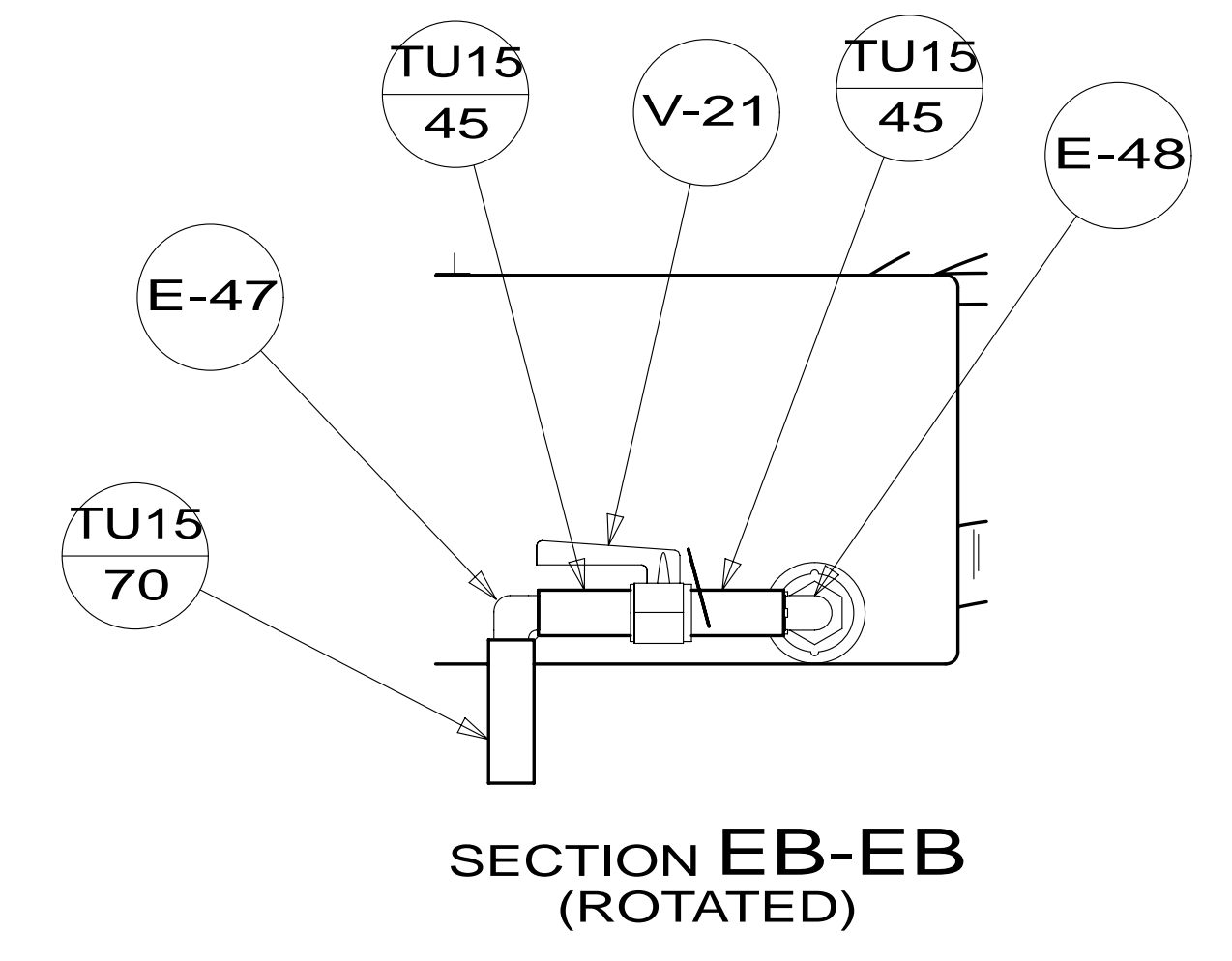
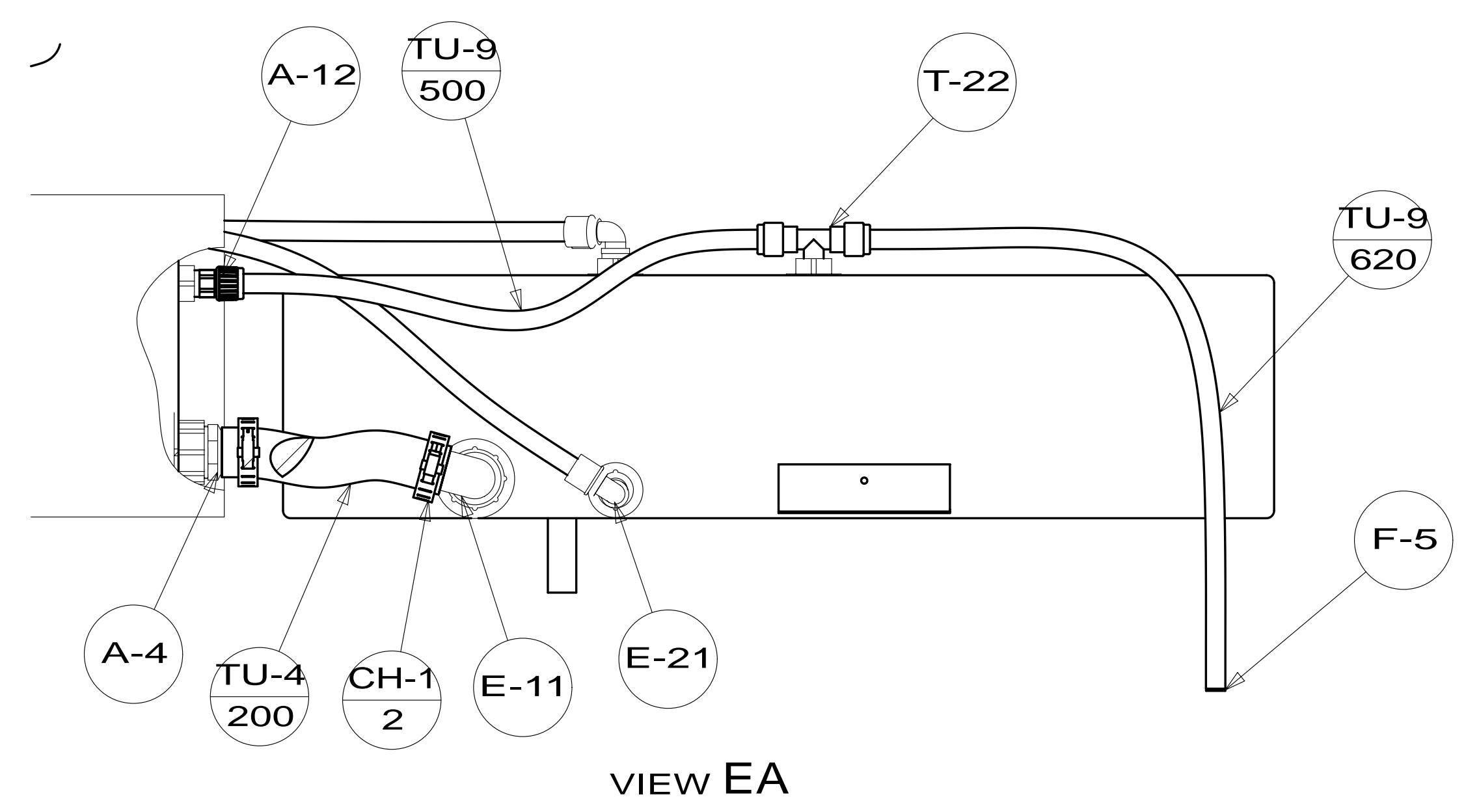
DETAIL DB (SHOWN W/OUT ACCESS-PANEL)

FIRST USED	14 J32H	
DO NOT SCALE DRAWING		
TITLE:	WATER SYSTEM INSTL	
SHEET 4	PART NO 185648	REV

* 185648 * A



(ONLY SHOWING TANKS AND PIPING UNDER FLOOR)



FIRST USED	14 J32H	
TITLE:	DO NOT SCALE DRAWING	
SHEET 5	PART NO	185648
	REV	
		10-Dec-2013

* 185648 * A