

- 12. U-LOCKS TO BE INSTALLED BEFORE THE FRAME ASM IS BOLTED DOWN TO THE CHASSIS AND BEFORE THE SEAL PLANES ARE INSTALLED.
- 11. SEE WIRING INSTL-BODY FOR ELECTRICAL CONNECTION.
- 10. PREP THE SURFACE PER MANUFACTURERS INSTRUCTIONS BEFORE APPLYING THE HEATING PAD.
  - 9. SEE DRAWING 061607 FOR INSTALLATION OF GROMMETS.
  - 8. SECURE DRAINAGE PIPES TO CABINET USING WIRE TIE 108046-02-000, AND SCREW 000G67-10-12U AT INTERVALS OF NOT OF NOT MORE THAN 4 FEET APART.
  - 7. SECURE VENT PIPE TO FLOOR WITH CLAMP 062401-02-000 (2), SCREW 000G67-10-12U (2), BRACKET 136878-01-CHT (2).
  - 6. VENT PIPE MUST PROJECT 51 MIN AND 64 MAX ABOVE ROOF FOR PROPER FIT AND FUNCTION. ADD S-1 (116666-01-CHT SEAL-VENT PIPE) AROUND PIPE ON ROOF BEFORE VENT CAP IS INSTALLED.
  - 5. SEAL AROUND SHOWER WITH SILICONE.
  - 4. USE SMOOTH PLUMBERS PUTTY 167459-01-000 TO SEAL STRAINER (0.2 PER STRAINER).
  - 3. ALL PIPE AND FITTINGS TO BE ASSEMBLED WITH SOLVENT 004020-01-000 (USA), 004020-02-000 (CAN)
  - 2. SLOPE OF TRAP ARM MUST BE 6 PER 305 mm.
  - 1. SLOPE OF HORIZONTAL PIPING TO BE MINIMUM OF 3 PER 305 mm.

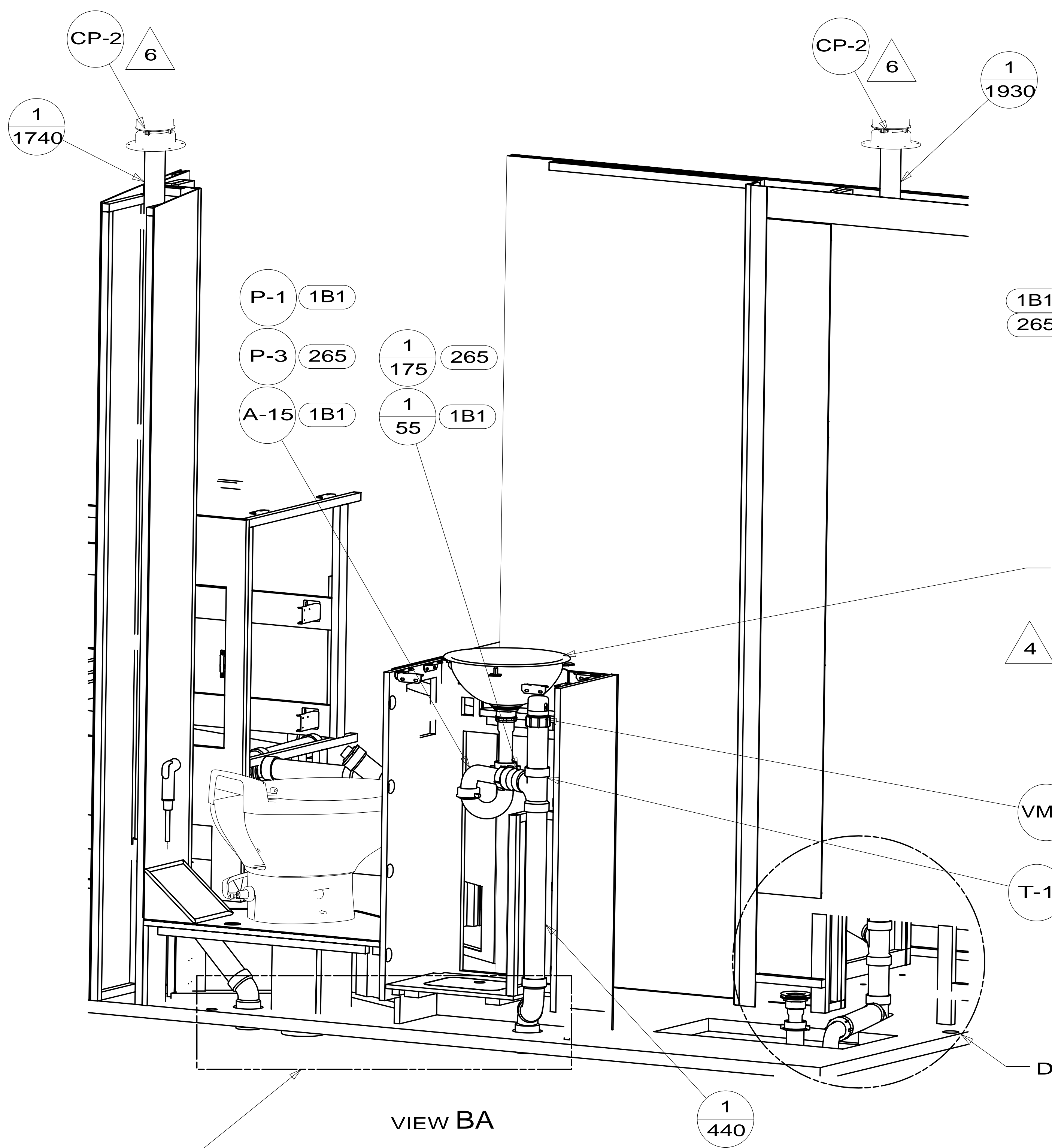
- (23T) DRAINAGE SYSTEM-HEATED
- (265) CODES/STANDARDS-CSA/CMVSS
- (1B1) CODES/STANDARDS USA

		COPYRIGHT 2014 WINNEBAGO INDUSTRIES, INC.	
DFT-ORIG	ORIG. DATE	ALL DIMENSIONS ARE IN MILLIMETERS	
CHKR		FIRST USED	
P.E.		14 H25P	
M.E.		UNSPECIFIED TOLERANCES ARE:	
DSNR		WHOLE DIM (X)	: 3
		ONE-PLACE (X.X)	: 1.5
		TWO-PLACE (X.XX)	: 0.50
		ANGLE	: 1°
THIRD ANGLE PROJECTION		MATERIAL:	
DO NOT SCALE DRAWING		REFER TO ES0018 FOR FASTENER TIGHTENING GUIDELINES	
TITLE: DRAINAGE SYSTEM INSTL			
SHEET 1 OF 4	PART NO	182310	REV
REF:	1	02-Apr-2014	

FOR DRAINAGE CALLOUTS SEE DWG NO 116229-01-000

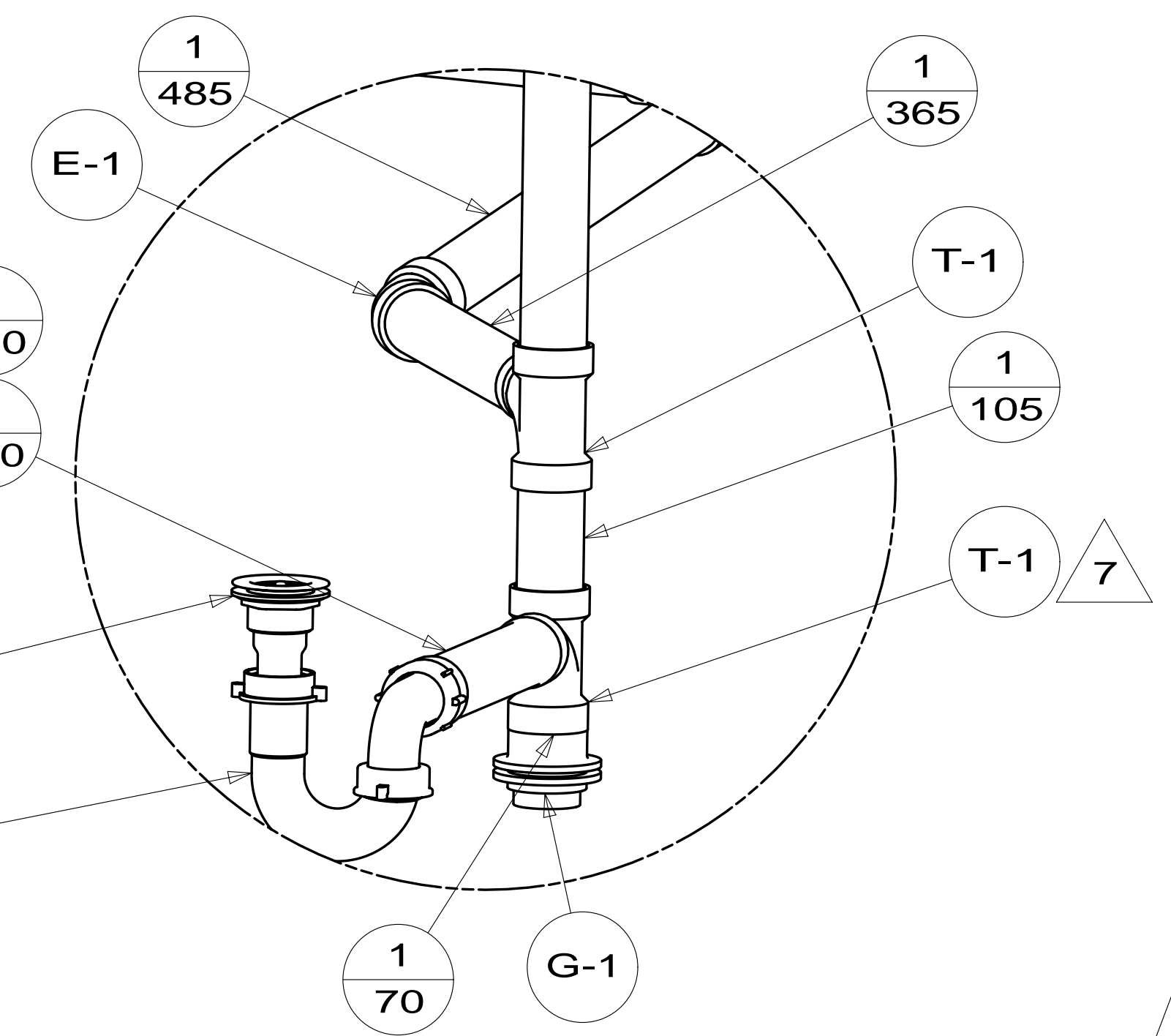
NOTES:

\* 182310 \* A

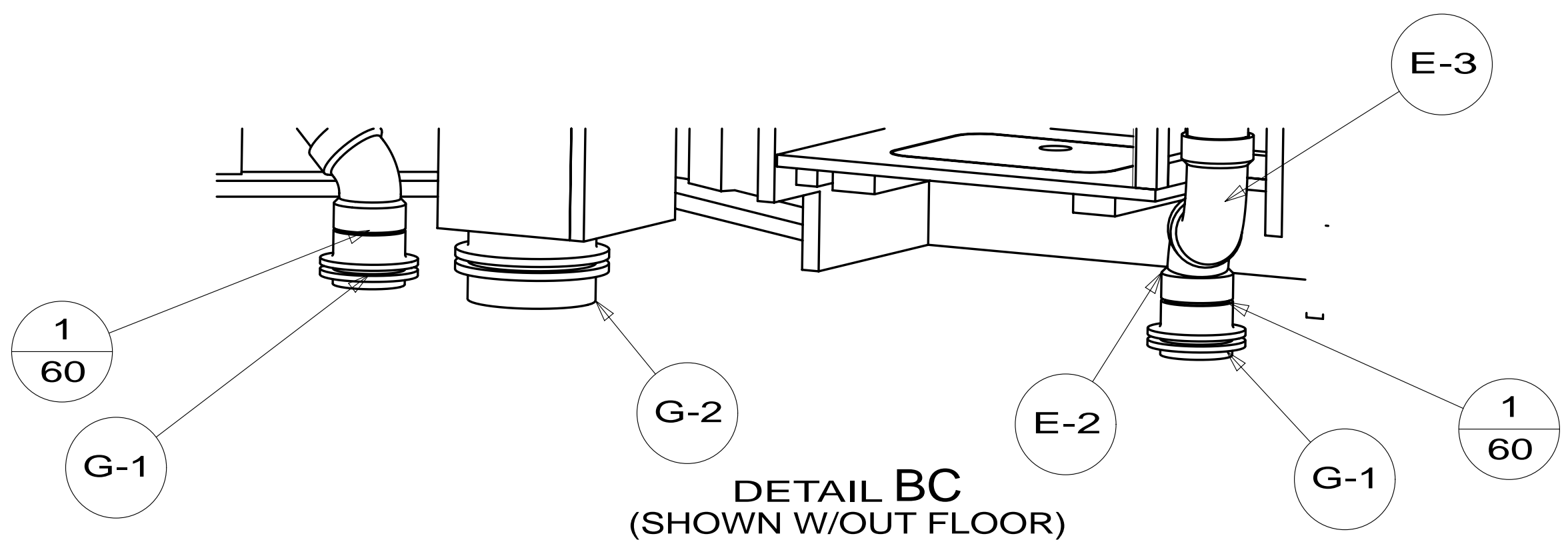
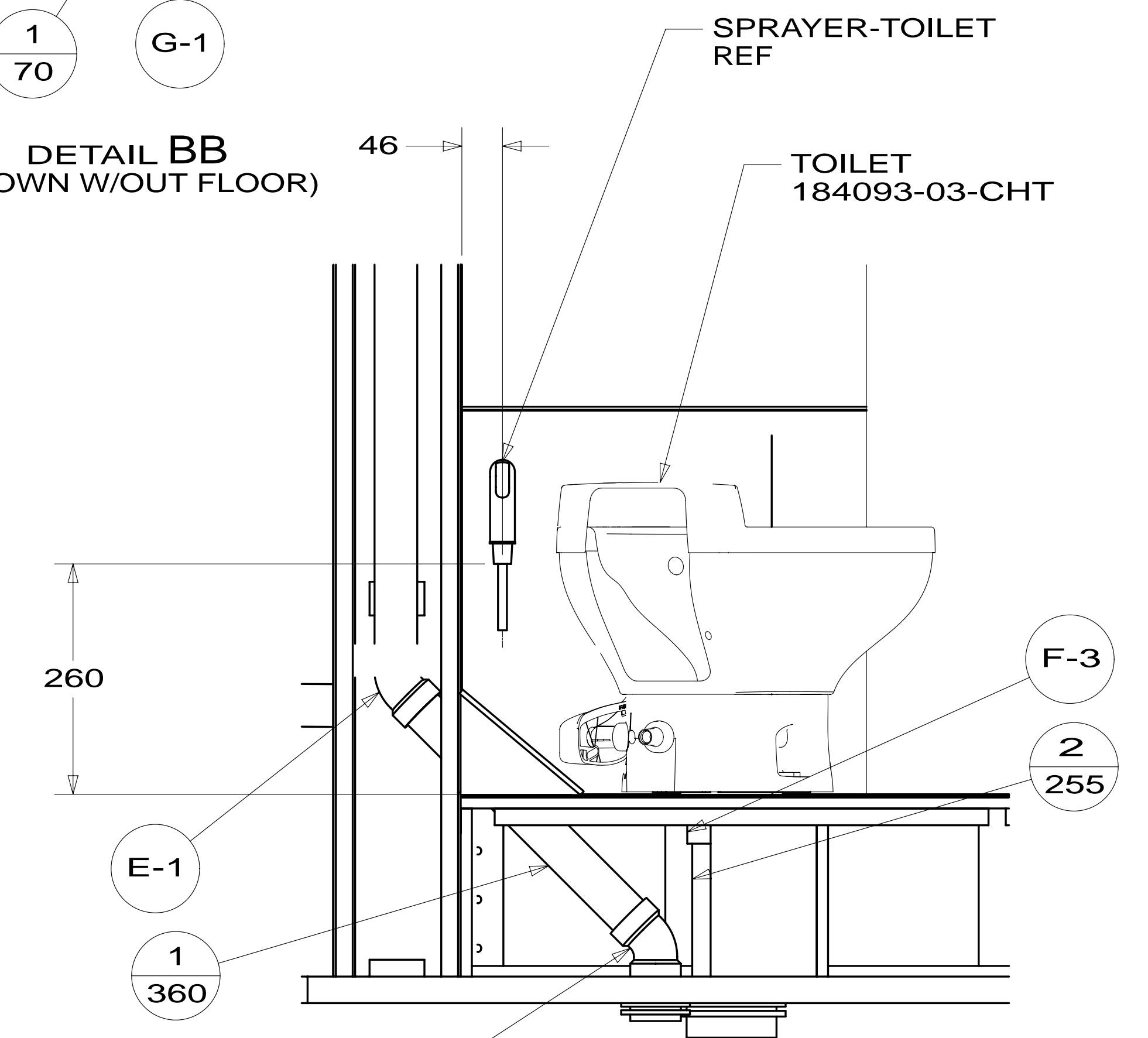


- SHOWER INSTL  
 147936-01-000  
 NUT  
 130403-01-000  
 WASHER-RUBBER  
 127440-02-CHT  
 TAIL PIECE  
 011069-06-000  
 011069-02-000  
 STRAINER  
 066440-01-000

- SINK-LAVATORY  
 151679-01-CHT  
 SEAL  
 091255-02-000(A/R)  
 STRAINER  
 163569-01-000  
 TAILPIECE  
 011069-05-000  
 NUT  
 130403-01-000  
 WASHER  
 127440-02-CHT



- 1B1 P-1
- 265 P-3
- 1B1 A-15



FIRST USED	14 H25P	
DO NOT SCALE DRAWING		
TITLE: DRAINAGE SYSTEM INSTL		
SHEET 2	PART NO 182310	REV

\* 182310 \* A

SINK-GALLEY  
178817-01-CHT  
SEAL  
091255-03-000(A/R)  
STRAINER  
163569-01-000  
TAILPIECE  
011069-05-000

- P-1 1B1
- P-3 265
- A-15 1B1
- 1 75 1B1
- 1 105 265
- 1 130
- E-6

VM-1

T-1

B-2 PL-1

1 1400

E-6

STRAP-CONDUIT  
008406-01-000  
SCREW  
000G67-10-12U (2)

BRACKET-DRAIN  
156189-01-CHT  
LUMBER  
052372-F0-220  
SCREW  
000G67-10-12U (4)

Y-1

1 240

E-6

1 275

E-6

1 1015

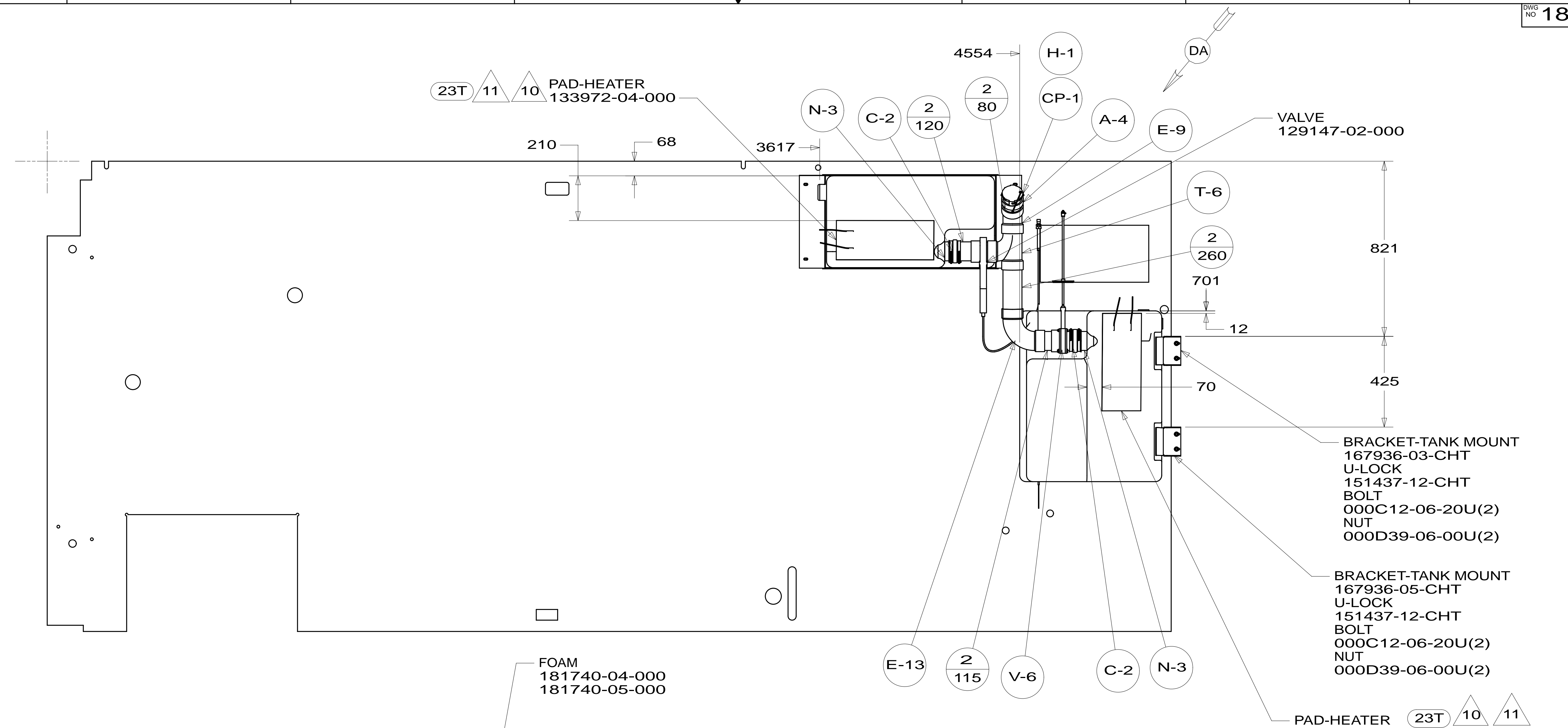
CLAMP  
083610-02-000  
SCREW  
000G67-10-12U

VIEW CA

CLAMP  
083610-02-000  
SCREW  
000G67-10-12U

FIRST USED	14 H25P		
TITLE:	DO NOT SCALE DRAWING		
TITLE:	DRAINAGE SYSTEM INSTL		
SHEET 3	PART NO	182310	REV
			02-Apr-2014

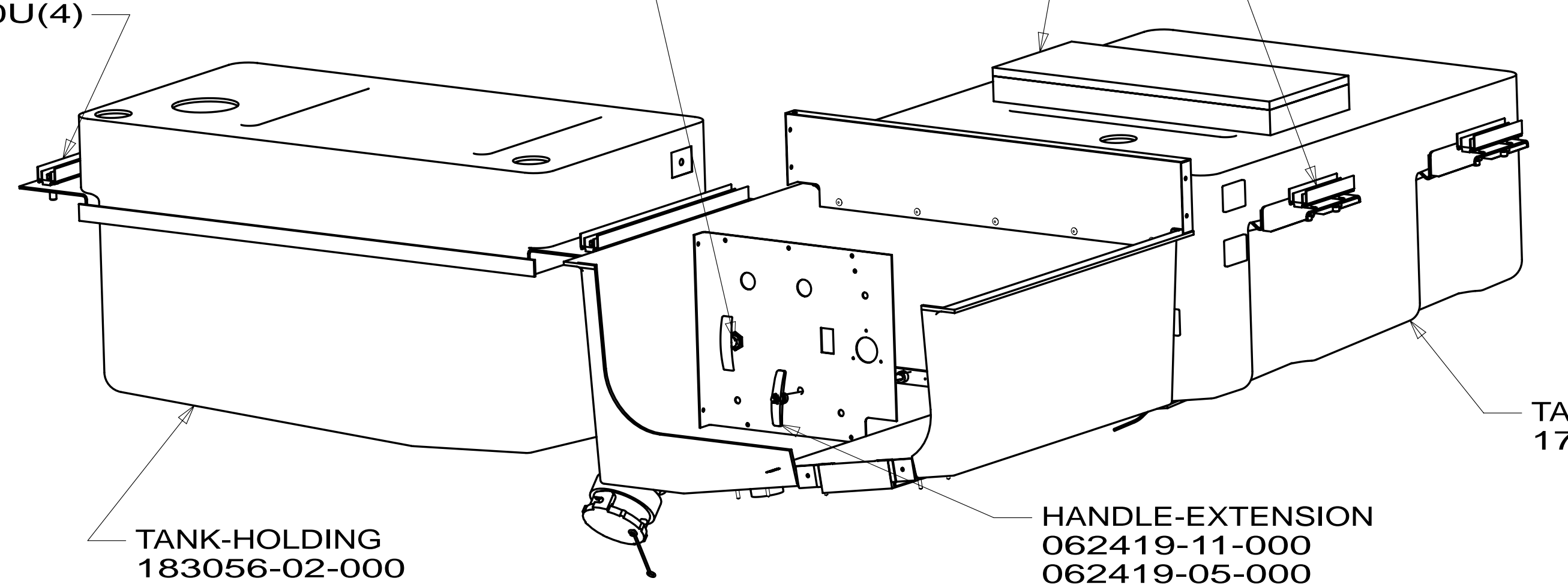
\* 182310 \* A



**BOTTOM VIEW**

CRADLE ASM  
137611-04-CHT  
U-LOCK  
151437-10-CHT(2)  
BOLT  
000C12-06-20U(4)

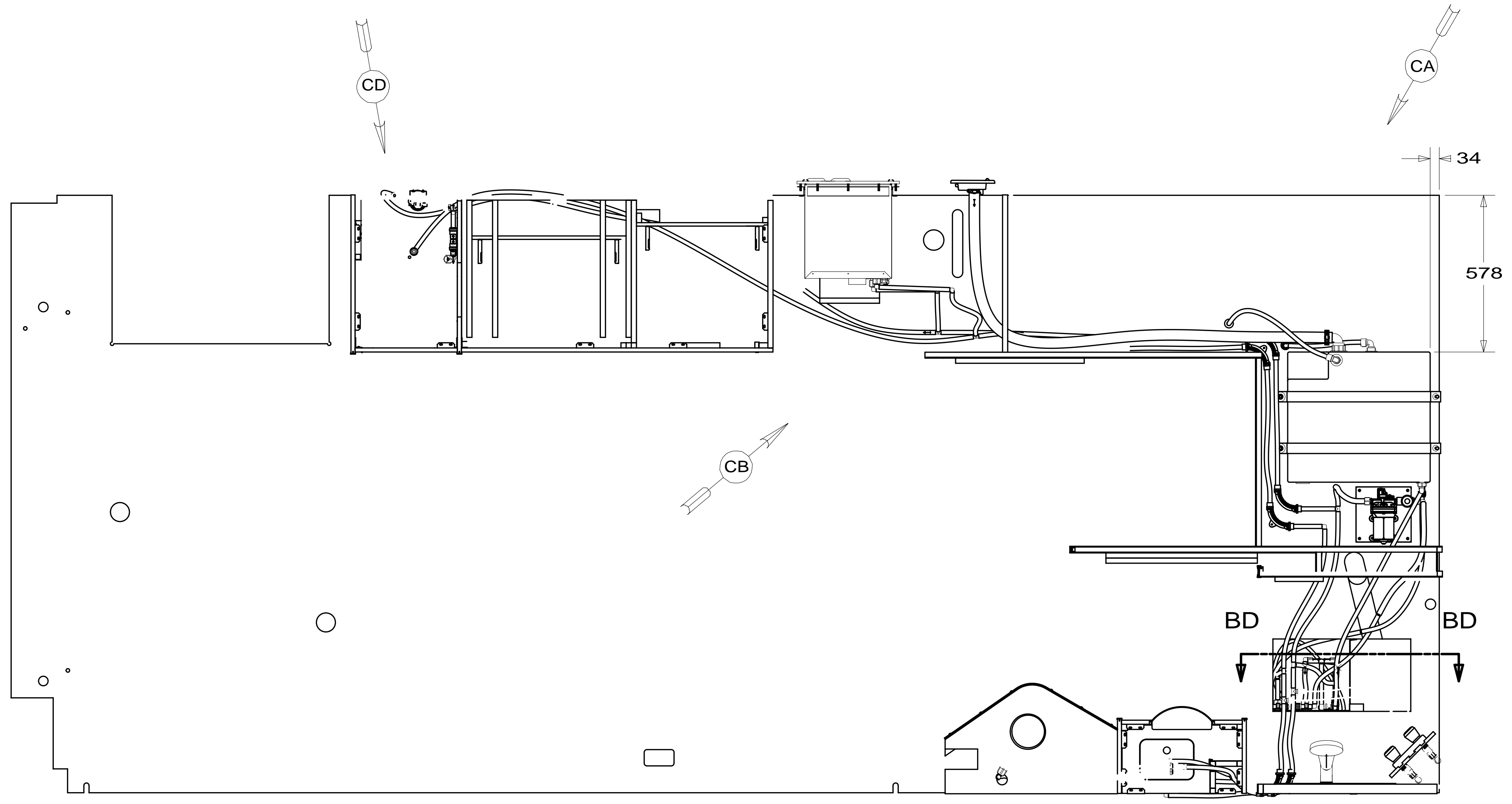
CABLE ASM  
062421-11-000



**VIEW DA**

FIRST USED	14 H25P	
TITLE:	DO NOT SCALE DRAWING	
TITLE:	DRAINAGE SYSTEM INSTL	
SHEET 4	PART NO 182310	REV
		02-Apr-2014

\* 182310 \* A



- NOTES:
- 10 MOUNT TO COACH FLOOR PRIOR TO INSTALLING ON FLOOR OF CHASSIS.
  9. INSTALL BYPASS PLUG FOR SYSTEM TESTING AND SHIPPING.
  8. ALL CRIMP FITTINGS TO 1/2" PEX TUBING REQUIRE 1/2" CLAMP 140171-03-000.
  7. ALL CRIMP FITTINGS TO 5/8" PEX TUBING REQUIRE 5/8" CLAMP 140171-04-000.
  - 6 LABEL HOT AND COLD SUPPLY TUBES AND TAPE FITTING TO TUBE BEFORE CABINET SET TO PREVENT MOVEMENT.
  - 5 ADD PIPE WRAP (LADDER SCRAP 110157-02-000) INSULATION.
  - 4 ADD TEFLON TAPE 010405-01-000.
  3. ALL TUBING TO BE SECURED AT 1200 INTERVALS MAXIMUM WITH CLAMP 010495-01-000 AND SCREW 000G67-10-12U OR EQUIVALENT.
  2. TUBING TO BE INSTALLED WITH SUFFICIENT SLOPE TO PROVIDE DRAINAGE TO NEAREST VALVE.
  1. PLASTIC FITTINGS TO BE SEALED WITH SEALANT 084456-01-000.

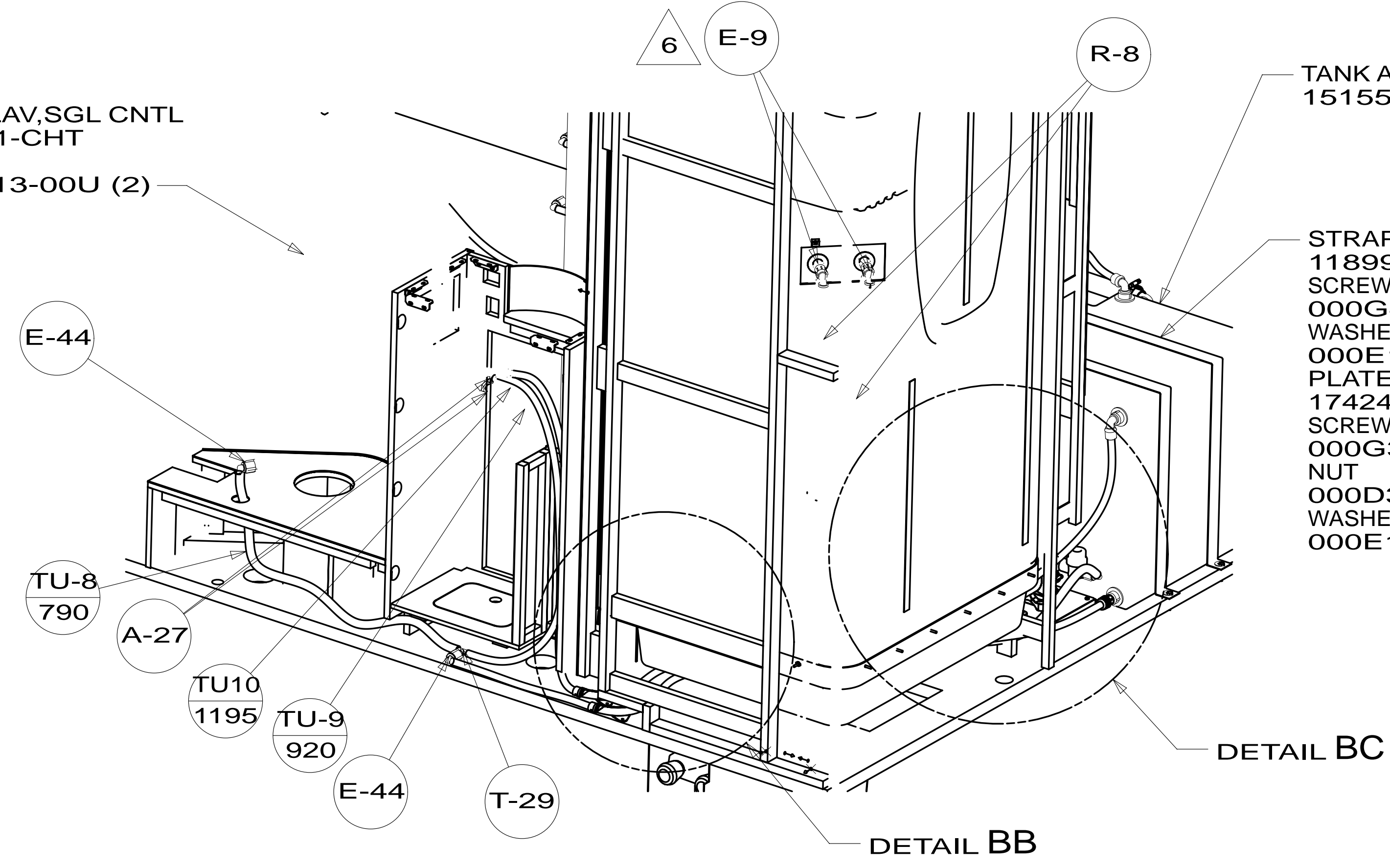
- 1BT WATER HEATER, TANKLESS
- 26B WATER PURIFIER
- 501 WATER PURIFIER WITHOUT
- 64R EXTERIOR WASH STATION

FOR WATER CALLOUTS SEE DWG NO 116230-01-000

<b>WINNEBAGO</b>		COPYRIGHT 2014 WINNEBAGO INDUSTRIES, INC.	
DFT-ORIG	ORIG. DATE	ALL DIMENSIONS ARE IN MILLIMETERS	
CHKR		MATERIAL: 14 H25P	
P.E.		UNSPECIFIED TOLERANCES ARE:	
M.E.	FIRST USED	WHOLE DIM (X)	: 3
DSNR		ONE-PLACE (X.X)	: 1.5
		TWO-PLACE (X.XX)	: 0.50
		ANGLE	: 1°
THIRD ANGLE PROJECTION		DO NOT SCALE DRAWING REFER TO ES0018 FOR FASTENER TIGHTENING GUIDELINES	
TITLE: WATER SYSTEM INSTL			
SHEET 1 OF 4	PART NO	182317	REV
REF:	1	01-Aug-2014	

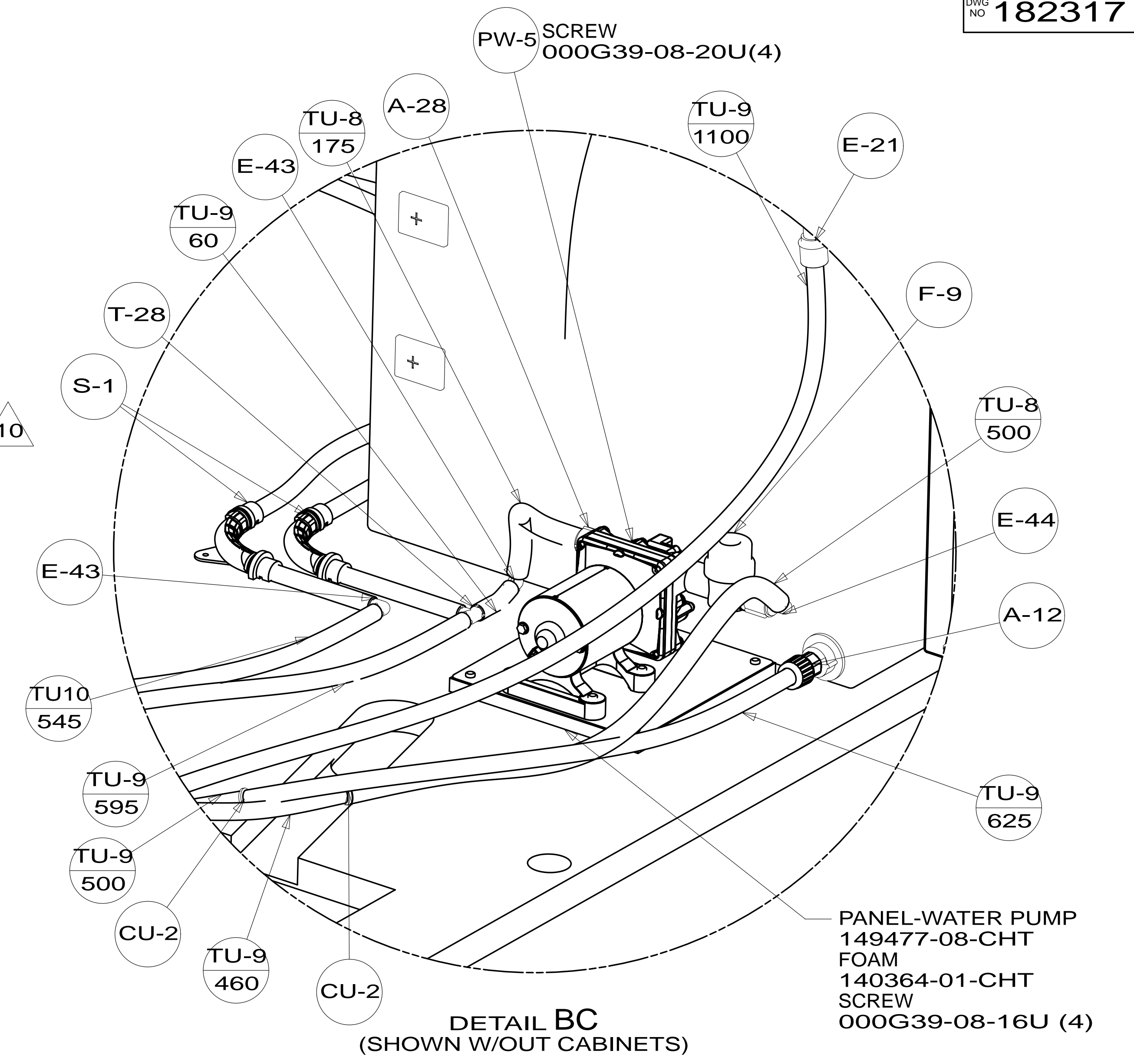
\* 182317 \* A

FAUCET-LAV,SGL CNTL  
171481-01-CHT  
WASHER  
000E13-13-00U (2)

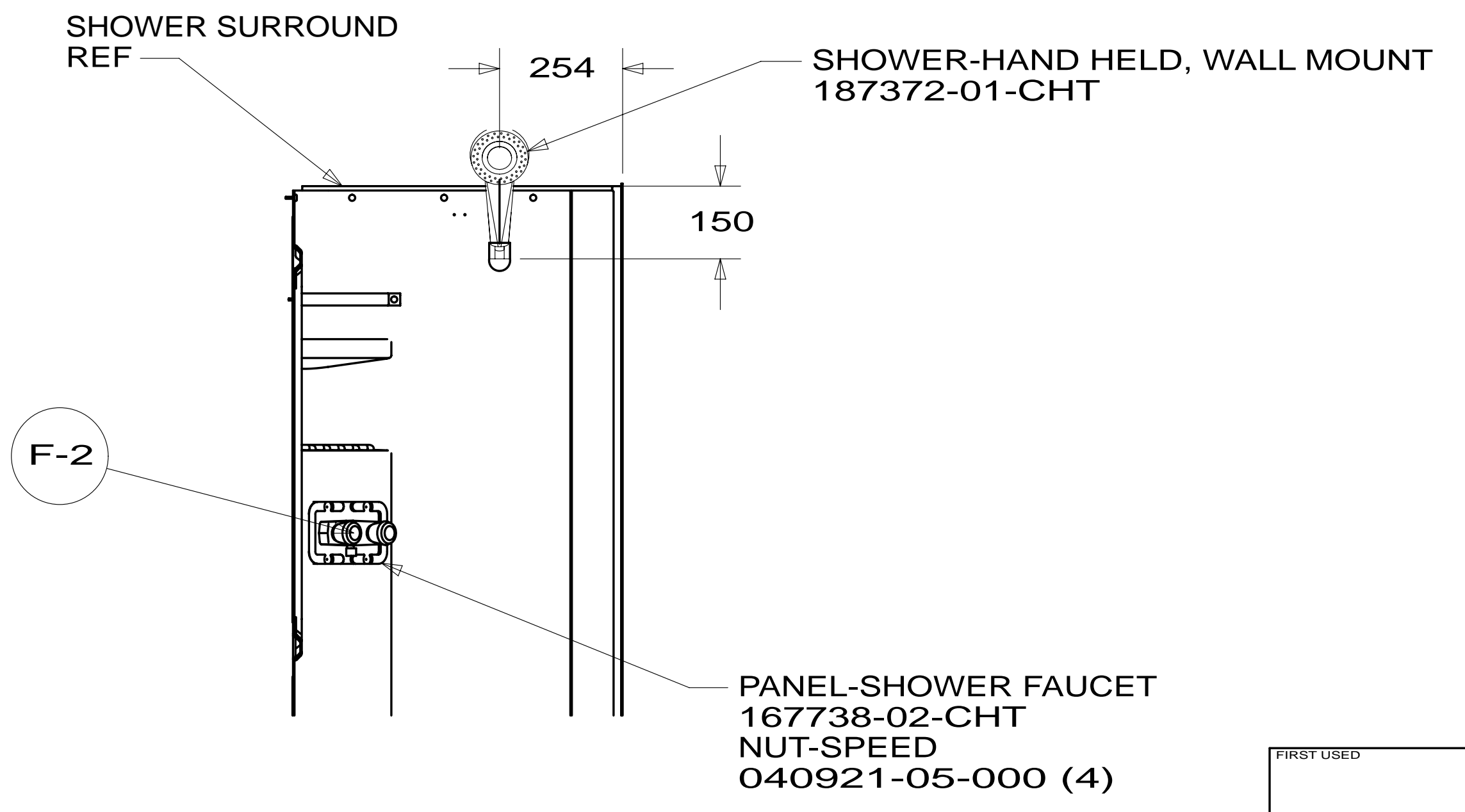
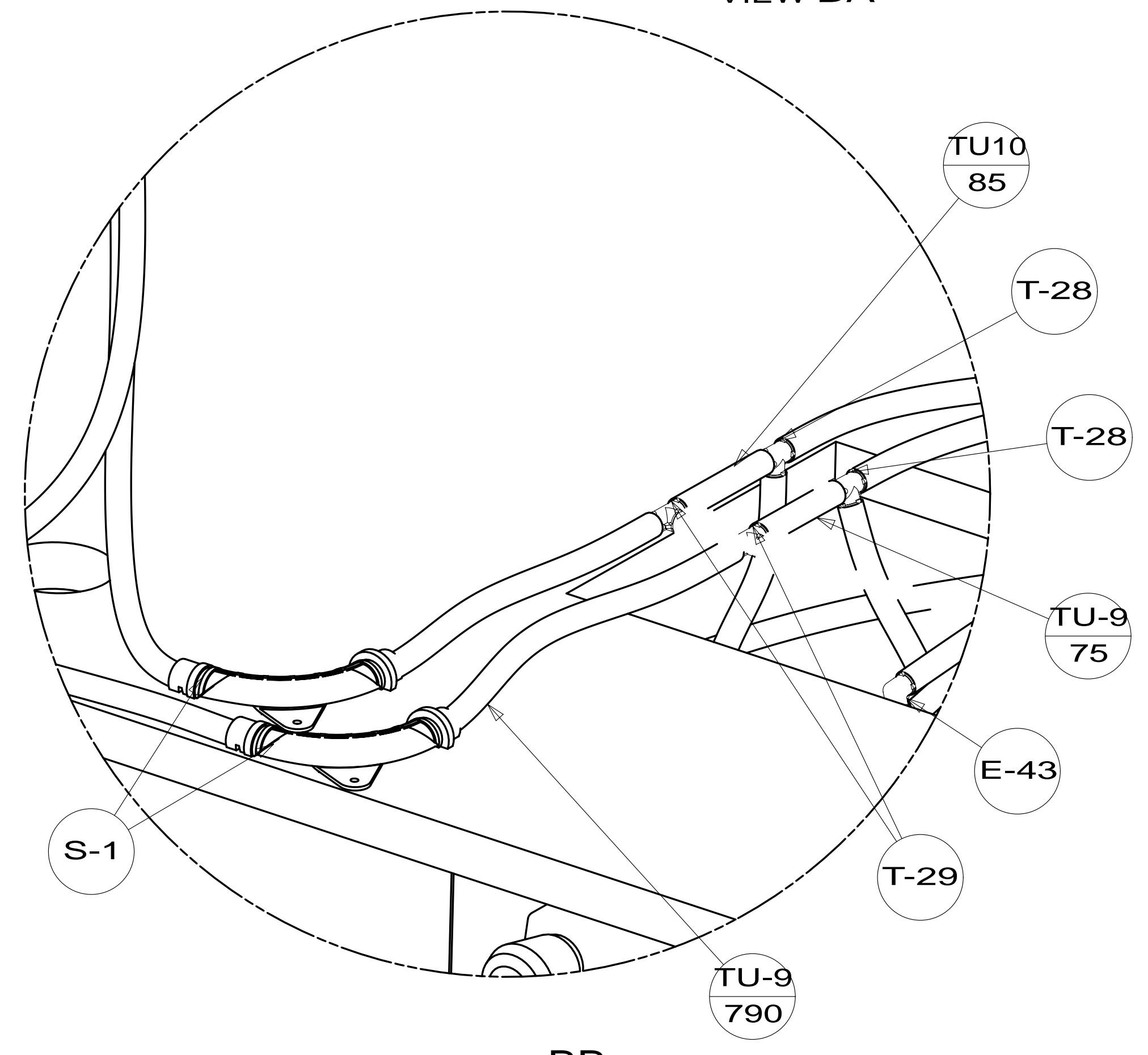


TANK ASM-WATER  
151550-11-000

STRAP-TANK,WATER  
118994-22-CHT (2)  
SCREW  
000G42-04-24U (2)  
WASHER  
000E13-16-00U (2)  
PLATE ASM  
174241-04-CHT  
SCREW  
000G39-10-08U(2)  
NUT  
000D39-05-00U(2)  
WASHER  
000E13-22-00U(2)

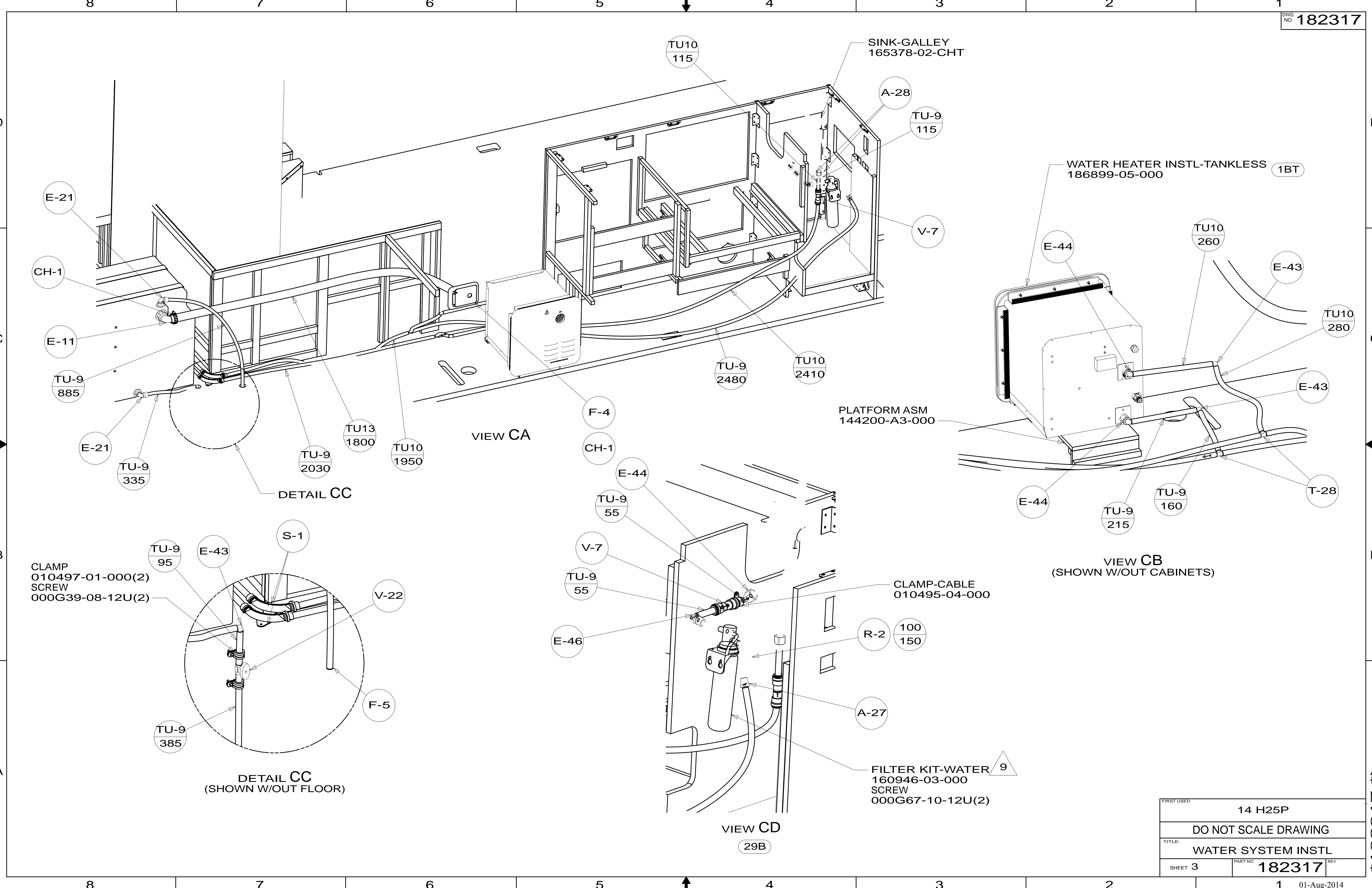


PANEL-WATER PUMP  
149477-08-CHT  
FOAM  
140364-01-CHT  
SCREW  
000G39-08-16U (4)



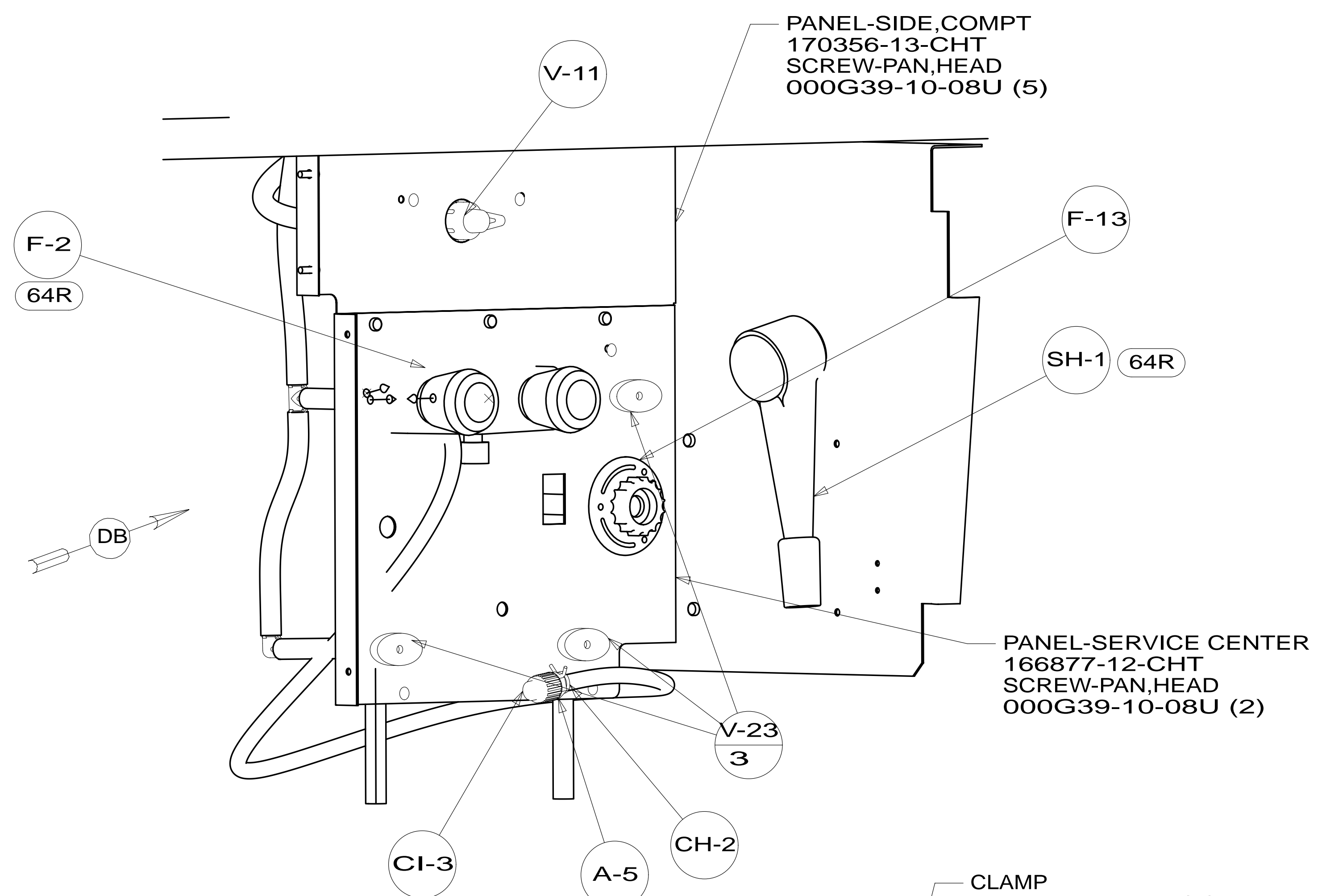
FIRST USED	14 H25P	
DO NOT SCALE DRAWING		
TITLE:	WATER SYSTEM INSTL	
SHEET 2	PART NO 182317	REV
		01-Aug-2014

\*182317 \*A

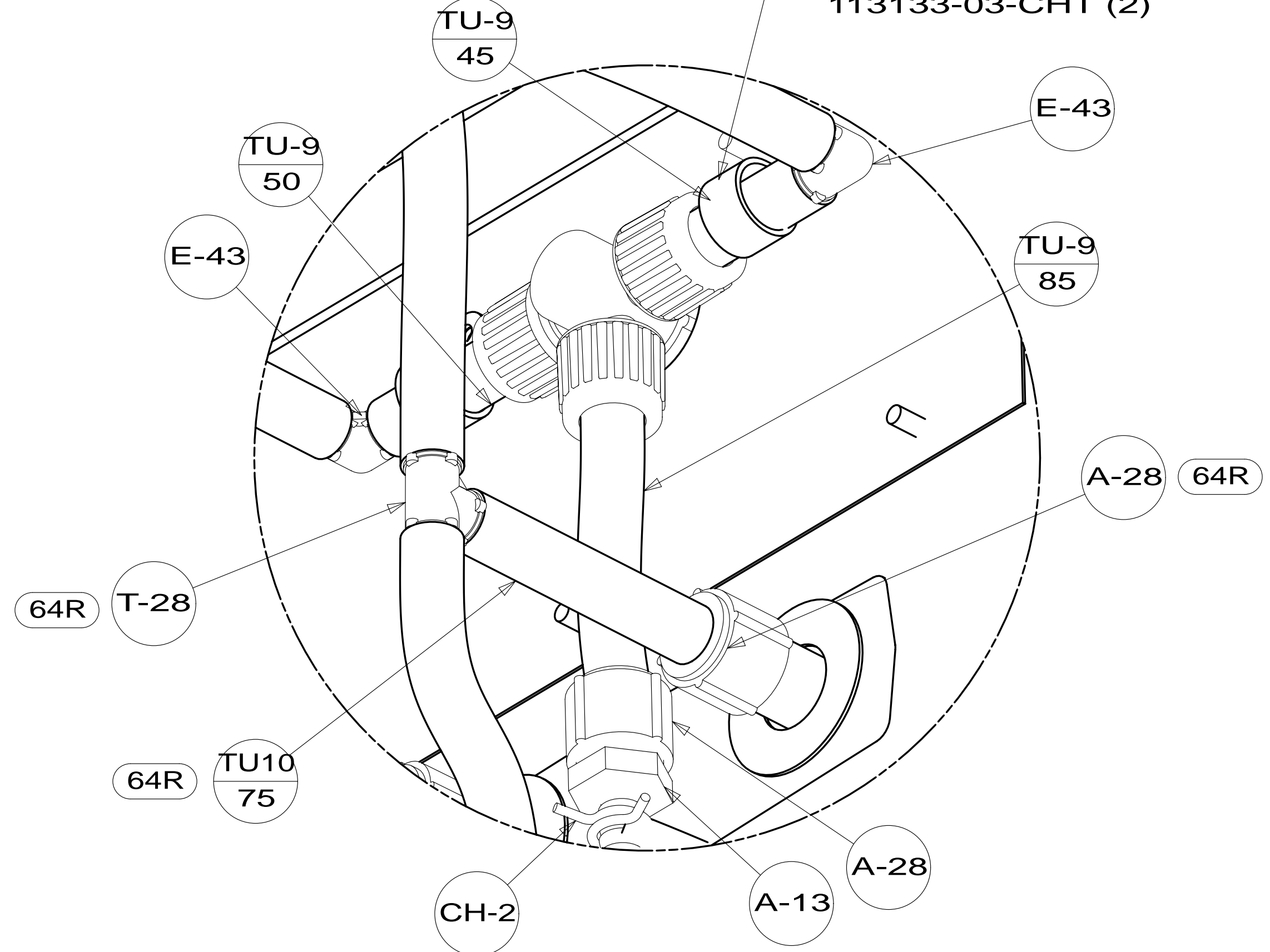


FIRST USED	14 H25P	
TITLE:	DO NOT SCALE DRAWING	
	WATER SYSTEM INSTL	
SHEET 3	PART NO 182317	REV
		01-Aug-2014

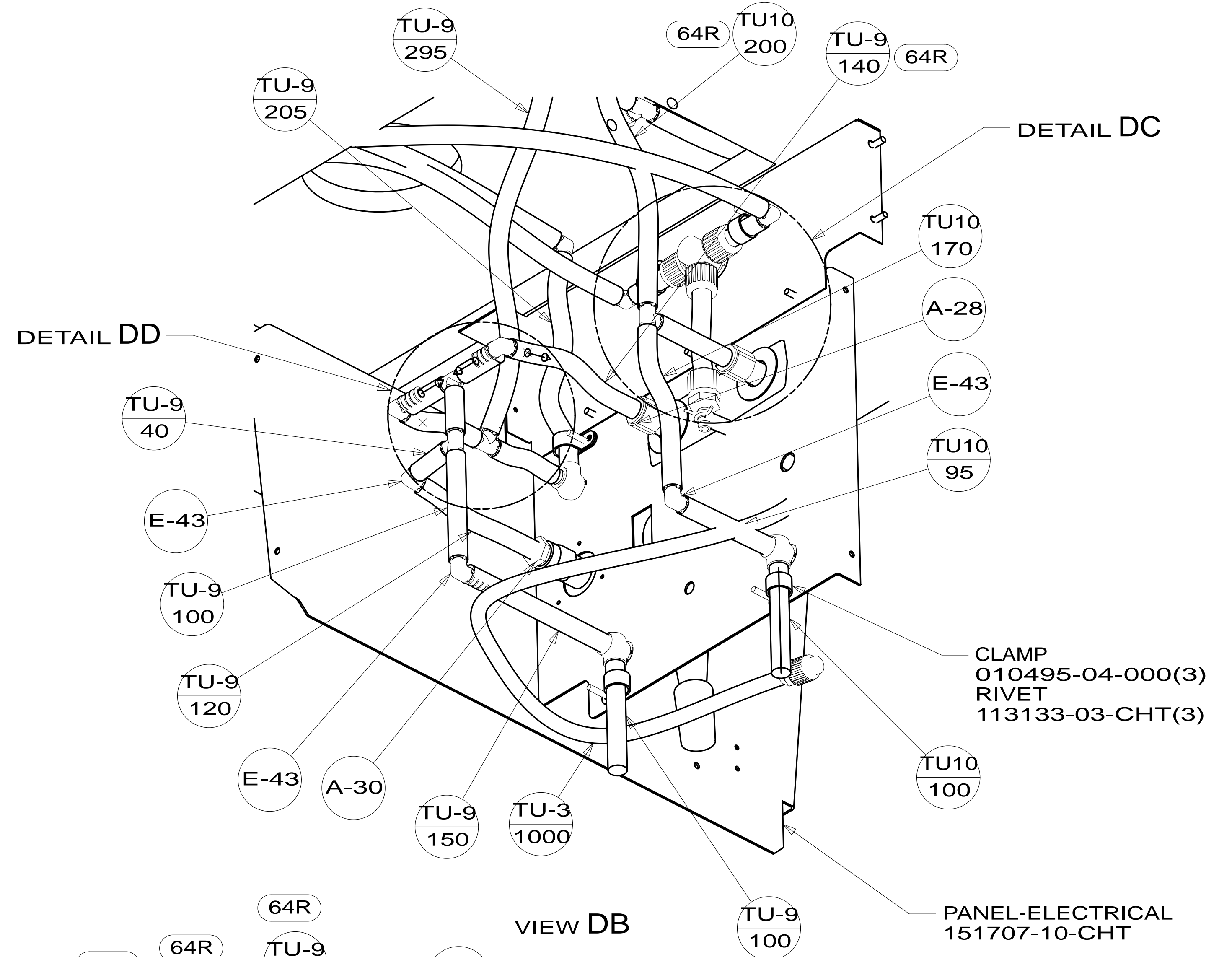
\*182317 \*A



VIEW DA

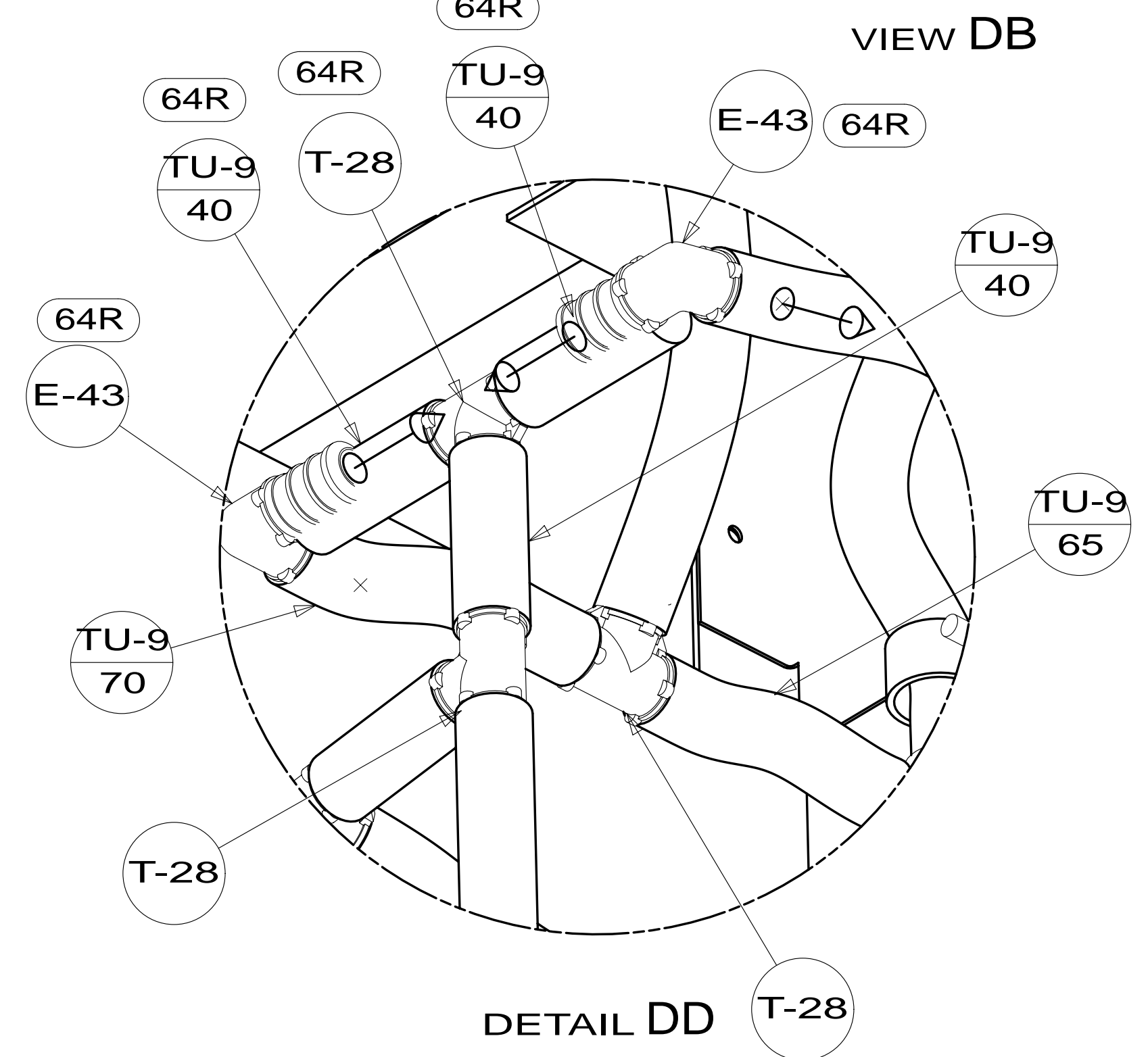


DETAIL DC



DETAIL DD

VIEW DB



DETAIL DD

FIRST USED	14 H25P	
TITLE:	DO NOT SCALE DRAWING	
	WATER SYSTEM INSTL	
SHEET 4	PART NO 182317	REV
	1	01-Aug-2014

\*182317 \*A